

Radio & Records

THE INDUSTRY'S NEWSPAPER

VOLUME 2, NUMBER 48

FRIDAY, DECEMBER 6, 1974

**WPEZ GM EXITS
NEW COUNTRY
HOTLINE:
(213) 466-0954**

Gavin Winners: KILT/Regan/A&M

STATION OF THE YEAR

Top 40
KILT-HOUSTON
Small Market
WHHY-MONTGOMERY
Medium Market
WAYS-CHARLOTTE
Black
WBL5-NEW YORK
Country
KENR-HOUSTON
Adult Contemporary
WIP-PHILADELPHIA

DISC JOCKEY OF THE YEAR

Top 40
BARRY KAYE-KILT
Medium Market
CHRIS HAZE-XEROK, now KFJZ
Adult Contemporary
GARY OWENS-KMPC
Black
BOBBY BENNETT-WOL
Country
DEANO DAY-WDEE

PD OF THE YEAR

Top 40
BILL YOUNG-KILT
Small Market
GUY PAUL-KSLY
Medium Market
JOHN RANDOLPH-WAKY
Adult Contemporary
DEAN TYLER-WIP
Country
RIC LIBBY-KENR
Black
JIM MADDOX-KDAY

MUSIC DIRECTOR OF THE YEAR

Top 40
DAVE SHOLIN-KFRC
Small Market
MIKE WELCH-KIOA
Medium Market
MIKE ST. JOHN-WERC
Black
DON MACK-KDAY
Country
BRUCE NELSON-KENR
Adult Contemporary
LAVERNE DRAKE-KNBR

STATION MANAGER OF THE YEAR

Top 40
DICK ROSENFELD-KILT
Small Market
JIM DAVENPORT-WFOM
Medium Market
STAN and SIS KAPLAN-WAYS
Adult Contemporary
STAN SPERO-KMPC
Country
DON NELSON-WIRE

RECORD INDUSTRY AWARDS

Record Exec Of Year
RUSS REGAN-20th CENTURY
Natl. Promotion Exec
HAROLD CHILDS-A&M
Multi-Label Promotion
LU FIELDS
Regional Promotion
BUD O'SHEA-EPIC
Natl. Country
LARRY BAUNACH-DOT
Natl. Black
CECIL HOLMES-CASABLANCA

BILL GAVIN PERSONAL AWARDS

Record Company Of The Year
A&M
Station Of The Year
WMC-MEMPHIS (Country)
Honorable Mention
KDAY-LOS ANGELES (Black)
KHOW-DENVER (Adult Contemporary)

BEST STATION PRODUCTION

KILT-HOUSTON

"I AM YOUR LEADER" BDA 435

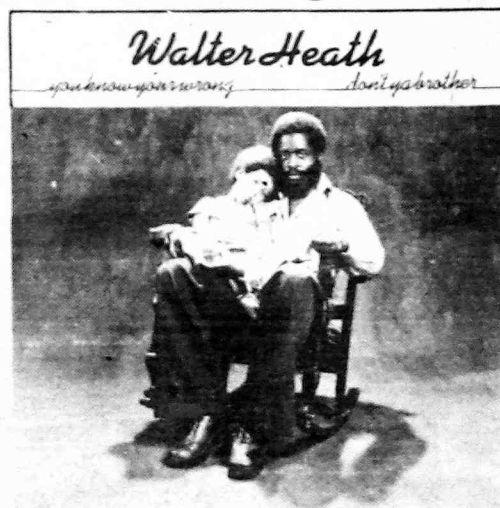
A HIT SINGLE

BY **WALTER HEATH**

IS LEADING WITH PLAY ON

WAOK	WDIA	WLIB	WVON
WBLS	WEBB	WLOK	WYLD
WBOK	WHAT	WNJR	KCOH
WCHB	WIGO	WOL	KYOK
WDAS	WJLB	WVOL	

From the
Forthcoming Album



BDS 5615

On Buddah  Records, From The Buddah Group

© 1974 Buddah Records Inc., A Subsidiary of Viewlex Inc.

RADIO

Listener Marries Listener In KHJ Promo

A few months ago at KHJ-Los Angeles, morning man Charlie Van Dyke began mentioning complaints he's had from listeners about computer dating services. People felt they were not getting their money's worth. Charlie suggested to his audience that radio was the best person-to-person vehicle ever and he would attempt match-ups. He began with a very sexy sounding lady on the phone telling about her likes, dislikes, hobbies, etc. She agreed to call and date the men that applied on the show. Charlie Van "Matchmaker" has just received an invitation to her wedding to a guy she met on the air at KHJ.

Driscoll designed a super "Boogie Bee" patch, and he's willing to design for other stations as well.



They are now giving them away through call-in-and-win, response has been excellent.

ROCK REPLICA

KIMN-Denver came up with an original for turkey day: a replica of Plymouth Rock, which was crated up and moved to a giant shopping center for display. Idea was to guess the weight of the giant rock and win the Thanksgiving jackpot.

BIRD'S THE WORD

WEPP-Waynesboro also gave

the "bird," but they gave it to their listeners in the form of music to do with birds (McCartney's Wings, Eagles, etc.)

WATSON ON LEAVING K-100

K100-Los Angeles — we reached former PD Bill Watson for comment on no longer being at K100 or with Drake Chenault... "I won the R&R-Lu Fields football pool and I thought I'd take it easy for awhile."

CITY GIVEAWAY

WAVZ-New Haven — Steve Warren designed a low budget, but very effective, series of promotions. Noting that several top groups and artists are carrying the same name as cities of the U.S., WAVZ had weekends giving away cities, Denver, Chicago, Arkansas (for Black Oak Arkansas) etc. giving away

the albums. At the conclusion of this, they gave away "America."

KDON DOINGS

KDON-Salinas is sending a serviceman from Ft. Ord-home for Christmas, all expenses paid. They have already received over 15,000 entries from the military base. Winner can go to anywhere in the world he calls home.

SUGAR INSTEAD

WYRE-Annapolis didn't give away turkeys this year. Instead they gave out 10 pound bags of sugar. Response was excellent.

DIAL-A-DOOR

KBEQ-Kansas reports that the sales oriented "Dial A Door" promotion is doing very well. Several clients are furnished with doors with a combination lock. Clues to the combination are given on the air to unlock the door

to the jackpot.

BRANDON BUYS REUS

WORD-Spartanburg PD Ron Brandon has bought out the Reus Record Report, it will now operate out of that city.

SPOKANE PULSE

In the most recent printing of the Pulse for Spokane, we accidentally left out the Country stations. It should have read:

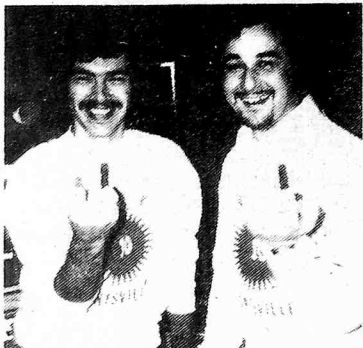
KSPO (C) Men 13 Women 18
KJRB (R) Men 12 Women 14
KREM (R) Men 11 Women 1

ROCHESTER HOOPER

In the rock competition, WBBF is pulling super strong numbers in the Sept-Oct Hooper. WBBF 18.7 total rated time periods, closest in WAXC with an 8.0. Still tops in the market is MOR WHAM with a 25.4 WEZO FM (also programmed for adults) has a 17.1.

GREAT BBF PATCH SNATCH

WBBF-Rochester's Mark



An interesting Thanksgiving promotion at WVOV-Huntsville: "Give Your Boss The Bird." Listeners called in and nominated their bosses for the dubious distinction. Shown above are air personalities Chris Tyler and Ken Maynor giving their leader (Stew Robb) the immortal at a staff meeting.

LATE NEWS:

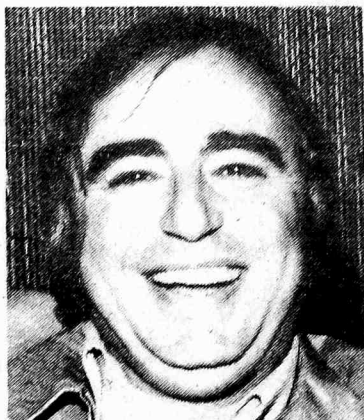
WPEZ GM Exits

Buzz Brindle has been appointed new PD, he was MD for Bob Pittman. As the PD change became effective, the general manager, Dick Booth, resigned, with no new GM yet named.

GAVIN CONVENTION

The ninth Bill Gavin Radio Programming Conference was held in Kansas City this past weekend through Tuesday. Highlights of the convention were a multi-media station presentation by KHOW-Denver, sessions with Ira Heilicher, Buzz Bennett, Chuck Blore, and the final session on Monday with George Wilson, Kent Burkhardt and Stan Kaplan.

All R&R Country correspondents can now call Jim Duncan at the office line (213) 466-1605, or his new Country Hotline (213) 466-0954.



Russ Regan: Record Industry Executive of the Year. See pg. 1



WRKO/Boston Music Director Christie Wright (R) receives a gold record from UA's Billie Lee Horn for Paul Anka's "Having My Baby".



WKBW/Buffalo has launched an inventive traffic safety campaign. The station has arranged for several demolished cars to be moved to the city's highest-travelled intersections, with a sign on top of each wreck reading "Don't Be A KB News Story." Shown are morning man Dan Neaverth (right) and the County Sheriff.

Radio & Records

BOB WILSON
PUBLISHER

MARK SHIPPER
EDITOR

DICK KRIZMAN
AD DIRECTOR

CANDY TUSKEN
ASSOCIATE EDITOR

LINDA GOETTSCH
ASSOCIATE EDITOR

JIM DUNCAN
COUNTRY EDITOR

MARJIE ARNOLD
SUBSCRIPTIONS

MIKE KASABO
POP/MOR EDITOR

MIKE HARRISON
FM ROCK

JASON SHRINSKY
FCC ADVISOR

BIFF COLLIE
NASHVILLE EDITOR

GRAPHICS:
Sun Flair

San Fernando, Calif

RADIO & RECORDS is published every Friday by Radio & Records, Inc. 6430 Sunset Blvd., Suite 1221, Hollywood, CA 90028, 213 -466-1605. Subscriptions \$130 per year or \$35 per quarter. No portion of this publication may be reprinted without the written permission of the publisher. Copyright © 1974, RADIO & RECORDS, INC.

RADIO

Call Outs: Filling In The Gaps

By DENNIS WATERS

Music Director, 13Q-Pittsburgh

The radio programmer is in many ways like a mapmaker. He tries to construct a scale model of his audience. And like a mapmaker, he has many tools at his disposal to make his map accurate. The two most frequently used are record sales and phone requests. But a map of the audience assembled using only sales and phones is comparable in accuracy to a map of the world before Christopher Columbus! There are vast, unexplored gaps because many of the persons who listen to your station will never call and never buy a record.

So the question is: How can you fill in the gaps on your audience map? Call-out research is a possible answer, because it lets you reach and learn about the "super-passive" segments of your audience. But call-out research is tricky, and must be designed and interpreted properly to have any value.

Your point of departure is your questionnaire, which must be thoroughly developed before you begin making calls. Work up the questions that most need answering and arrange them in a logical sequence. Word the questions so they can be answered in simple, concrete terms. What the respondent really does instead of what he thinks he does or what he would like to do is a crucial distinction. For example, the question "What radio station do you usually listen to?" might, on the surface, look like it could produce some specific information that you need. But this question does not deal with the dichotomy of the respondent's "real" versus "ideal" behavior. In Pittsburgh, a person might say he "usually" listens to KDKA, when in reality he only listens to the radio about once a month. A better way to phrase the question is to ask for specifics, i.e. "Have you listened to the radio today? If so, what station?"

Once your questionnaire is designed, you are ready to begin making calls. If you're interested in your current playlist, a huge weekly sample will be necessary for the results to have any statistical validity. If you want more subtle information, a large sample over a longer time base will probably work.

Your caller should not, of course, say that he's calling from a radio station. If you're in a

university town, he can identify himself as a student doing research. This will bring

maximum cooperation from respondents. Otherwise, make up a phony, official-sounding

company title.

It is important to interview all members of each household you

reach, rather than just the person who answers the phone. This will increase your efficiency in reaching younger demos, and will enable you to pinpoint familial listening patterns more quickly. For example, if mom listens to a Schulke FM during the day, her youngsters might have a tendency to listen to FM rockers during the afternoon and evening hours. This kind of information can be critical.

Once you've completed a sufficient number of calls, your remaining task is to interpret the data. Quick demographic and geographic break-outs are a starting point. If you have access to a computer, several multivariate analysis programs are particularly applicable to this type of research, and can yield a wealth of information. If your questionnaire was well-designed and your calls were executed well, interpretation should be no problem. But if you find yourself with a mass of disorganized, unrelatable information, you should throw it all out, redefine your goals, redesign your questions, and start all over again.

Call-out research is a valid method for filling in the gaps left by sales and requests. But great care must be used to avoid design and execution pitfalls if your data are to be meaningful.



WNEW-FM Program Director Scott Muni hosted a festive group on the occasion of Warner Bros. recording artist Mike McGear's recent visit to the station. Left to right are: Muni, McGear, Warner Bros. Artist Relations exec Alan Rosenberg, Warner New York Promotion Manager Mike Shavelson and Warner Bros. U.K. Special Projects Director Derek Taylor, who accompanied McGear to the U.S. from London. Russ Shaw Warner Artist Relations man, is at bottom.



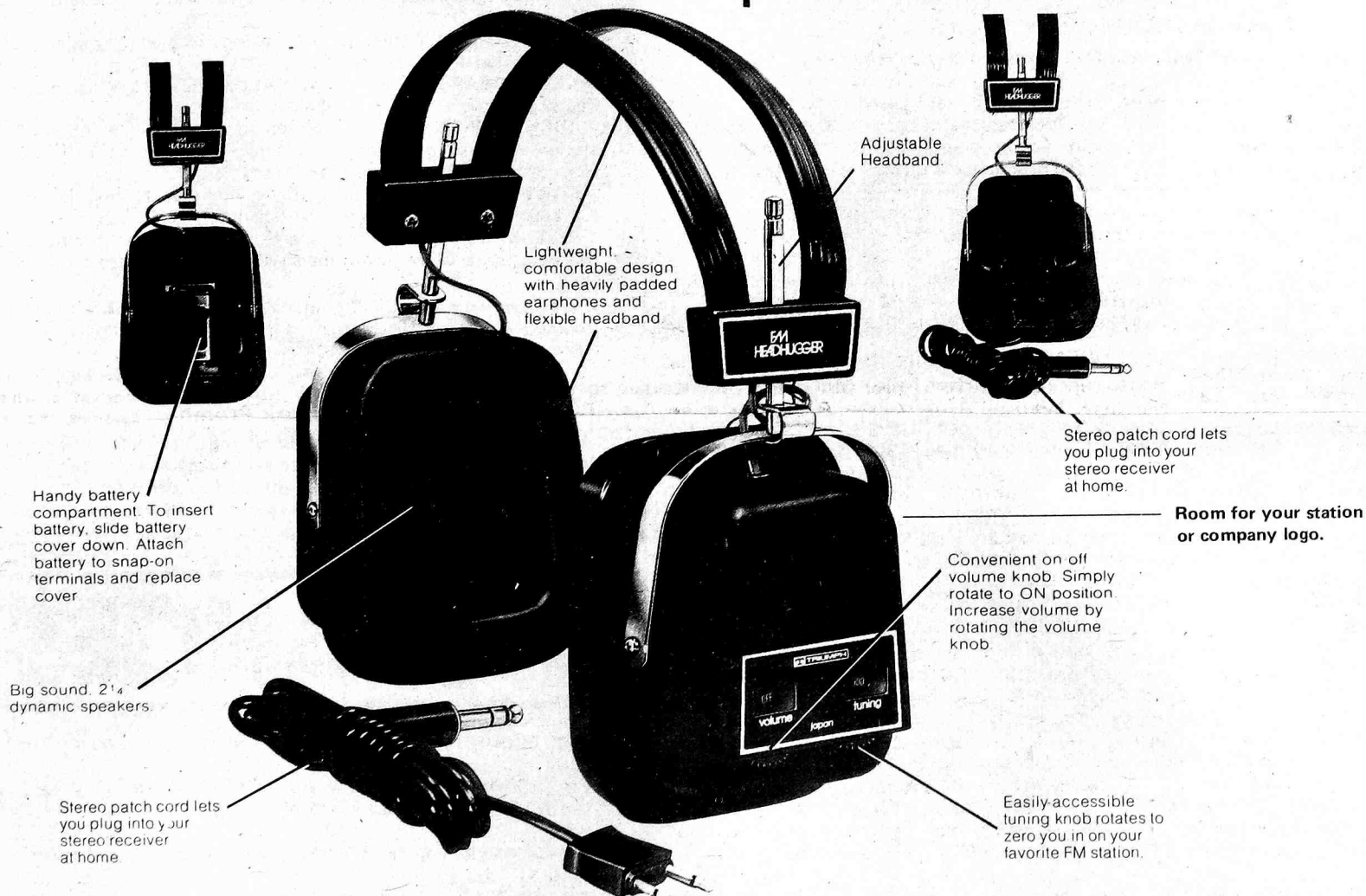
Shown at a United Artists' luncheon for newly-signed Mandrill are (from left): Ric Wilson, Mandrill; Jim Maddox, PD, KDAY; Al Teller, UA President; Claude Cave, Mandrill; Jerry Boulding, consultant for WCHB and WJPC; Don Mack, MD, KDAY; and Ray Anderson, UA Vice President of Pomotion.

**NEXT WEEK
IN R&R
SPECIAL
YEAR-END
MUSIC
REVIEW**

THE R&R BUYERS SERVICE IS HERE!

YOU CAN'T BEAT OUR PRICE
on Fantastic Christmas Gift
Items for Clients or Audience Giveaways

FM Headhugger Combo... Private Headset Radio & Stereo Headphones



WHETHER YOU BUY 6 OR 96, PRICE ALWAYS STAYS SUPER LOW

RETAIL: \$40.00 WHOLESALE: \$27.00

R&R: \$17.00 Minimum Order: 6

AVAILABLE WITH AM ONLY: \$13.50

INCLUDES PRE-PAID DELIVERY

ORDER SHIPPED WITHIN 72 HOURS OF RECEIPT

CALL R&R --(213) 466-1605 FOR ORDERING DETAILS

OFFER OPEN TO ALL R&R SUBSCRIBERS

CLASSIFIED

24-Hour R&R
Classified Hotline:
(213) 466-2248.

OPENINGS

WDXR-Paducah needs news director. Must be able to write in contemporary manner. Good delivery. Good chance for a move up. Contact Pat Martin, (502) 443-1737. (11-18)

WESA - Erie looking for a person to work mid-days; experience on air, good production and willing to learn play-by-play. Contact Gary Persons (412) 483-6551. (11-29)

WGRQ-Buffalo needs air personality. Contact Lee Poole, WGRQ, 59 Virginia Place, Buffalo, N.Y. 14202 or call (716) 881-4555. (11-29)

WJBQ-Portland needs different-sounding creative morning man who can work with in format. This is not your typical "Q" format station. Send tapes and resumes to Charlie Lake, 841 Main St., Westbrook, Me. 04092 or call (207) 854-8400. (11-29)

John Rook and Associates, Radio Programming Consultants needs several people: Combination PD-morning drive, off-air PD, morning man, two news directors, and an air personality. Send tapes and resumes immediately to JOHN ROOK & ASSOC., 19031 Marrilla Dr., Northridge, Ca. 91324. (11-27)

WMYQ-Miami needs jocks and newsmen. Call Jerry Clifton, (305) 538-5321.

WTRU-Muskegon has opening for night man with first ticket -- T40 format. Call (616) 733-2126 or send tapes and resumes to WTRU, P.O. Box 4305, Muskegon Hts., Mich. 49444. (11-29)

KRKK-Rock Springs needs first class announcer with heavy voice, afternoon drive time, some experience preferred. Wyoming's No. 1 rock station in a market of 50,000. Send tapes and resumes to **BILL LUZMOOR, KRKK**, P.O. Box 2128, Rock Springs, Wyoming, 82901 or call (307) 362-3793. (11-27)

KYSN-Colorado Springs needs first ticket Top 40 jock -- call Gregor Vaule, (303) 634-1511 (11-19)

WDAT-Daytona Beach needs pro jock with quality production. Send resume and tape to Dick Lange, WDAT, Box 5038, Daytona Beach, Fla. 32020. (11-21)

WFIR-Roanoke needs a bright young communicator to handle adult contemporary evening air shift. Good production a must. Tapes and resumes to WFIR, P.O. Box 150, Roanoke, Va. 24002. (11-18)

KZFM-Corpus Christi is looking for an all night lunatic -- madmen only need apply. Send tapes and resumes to Jim Allen, KZFM, 600 Bldg., Corpus Christi, Tex. 78401, or call (512) 883-3516 (11-20)

WIVY-Jacksonville looking for production man who will also do weekend swing shift. Should have Top 40 experience, good voice and be creative. \$200-week to start. Tape and resume to Lee Fowler, WIVY, Gulf Life Center, Jacksonville, Fla. 32207 (11-21)

KIKX-Tucson needs one jock, one production man, and one newsmen. Contact KIKX, 4601 No. Swan Rd., Tucson, Az. 85703, or call (602) 299-9711. (11-21)

WXXY-Ft. Lauderdale needs one production man. Tape and resume to John Gambling, 419 S. Andrews Ave., Ft. Lauderdale, Fla. 33312 (11-18)

KKXL-Grand Forks looking for night time rocker. Tapes and resumes to Mark Renier, KKXL, Box 997, Grand Forks, N.D. 58201 (11-19)

WGOW-Chattanooga seeks strong personality jock. No "Time & Temps" need apply. No calls, tapes and resumes to Tex Meyer, WGOW, P.O. Box 4704, Chattanooga, Tenn. 37405. EOE (11-18)

WJDX-Jackson needs several jocks. Contact Bill Crews, WJDX, P.O. Box 2171, Jackson, Miss. 39205. (601) 982-1062 (11-19)

Secondary market PD for Top 40 station. Tapes and resumes to SRO Brd. c-o Bo Donovan, P.O. Box 1723, Bellevue, Wash. 98009. (206) 455-8124 (11-13)

Major Market jock opening. Contact SRO Broadcasting, c-o Bo Donovan, P.O. Box 1723, Bellevue, Wash. 98009 (206) 455-8124. (11-13)

WLRN-Nashville needs jocks immediately. Tapes and Resumes to WLRN, David St. John, 800 S. 4th St., Suite 908, Louisville, Ky. 40203. (502) 585-5178 (11-13)

WSHE-Ft. Lauderdale needs jocks immediately. Tapes and resumes to WSHE, Gary Granger, 3000 W. 60th Ft. Lauderdale, Fla. 33314. (305) 581-1580 (11-13)

KSSS-Colorado Springs needs traffic person; writing skills and production helpful Tapes and resumes to Mike Maloney, KSSS, Colorado Springs. 80901 (11-13) EOE

KATZ-St. Louis needs night jock, high energy, good balls, good production. Tapes and resumes only to Keith Adams, KATZ, 812 Olive, St. Louis, Mo. 61301. NO CALLS PLEASE. (11-13)

WAXY-Ft. Lauderdale looking for heavy production people and news people. Tapes and resumes to John Gambling, WAXY, 419 S. Andrews, Ft. Lauderdale, Fla. (11-13)

KENO-Las Vegas needs first class weekend and first class ticketed jocks full time and news personnel. Contact Doug Corey, KENO, P.O. Box 5367, Las Vegas, Nev. 89102. (702) 876-1460 (11-13)

NEWSMEN & WOMEN

WHBQ-Memphis -- opening for a young energetic all-night news person. Contact News Director Sid Leak, WHBQ, 485 S. Highland, Memphis, Tenn. (901) 323-7661 EOE (11-18)

WAXY-Ft. Lauderdale needs newsmen. Tapes and resumes to John Gambling, 419 S. Andrews Ave., Ft. Lauderdale, Fla. 33313. (11-18)

KDZA-Pueblo needs newsmen. Tapes & resumes to Jack Carter, Box 93, Pueblo, Colo. 81002. (10-23)

KIKX-Tucson looking for a morning newsmen, with a strong voice and good delivery. Tapes & resumes to Chuck Dunaway, Box 5566, Tucson, Az. 85703. (10-23)

MISCELLANEOUS

Top Quality 3M-177, 1 Mil Tape, in white boxes, on 7 inch reels. Only used once by major national syndicator. Value is \$3.75 a box, will sell for 75¢ a reel, complete with box. Call R&R, ask for Dave Nelson (213) 466-1605.

POSITIONS SOUGHT

BOB LANE formerly with WROK-Rockford and WNOR-Norfolk looking for position as jock and -or PD. Prefer Southeast; good voice and good production. Contact (919) 893-3293 (11-27)

Medium market PD-Jock has worked for Drew and Bartell, currently winning and looking for another challenge either as jock or PD. Call (313) 889-0075 or (517) 686-4785 after 7:00 p.m. EST (11-27)

Mark Clemons four years experience, first ticket. Looking for medium to large rocker. (904) 253-0275 (11-27)

ROB THOMAS formerly with WELE-South Daytona has 8 years experience in Rock, C&W, MOR. Looking for air gig or PD or MD. Call 767-1131. (11-27)

"Shotgun"**MARK RIVERS** of Shotgun Creative Services is looking for major market jock gig or medium market jock-PD combination. Formerly with WGRQ-Buffalo, 15Q-Two Rivers, WYFE-Rockford. Write P.O. Box 39, Rockford, Ill. 61105 or call (815) 233-7192. (11-27)

DICK SMITH high energy Top 40 announcer previously with WZUE-Akron needs gig now. Also has news management and TV anchor experience to Top 50 market. Call (216) 456-2592 (11-27)

BILL MITCHELL currently doing weekends at KGON-Portland looking for full-time position with Top 40 or progressive station. Three years experience with third phone with endorsement. (503) 287-4625 (11-25)

JEFFERSON STONE former PD and afternoon drive jock at WIVY-Jacksonville. Super balls, dynamite production, Pulse and ARB rated No. 1 in afternoons. Available now to Top 50 stable rocker. Personality or Q format. Call (904) 725-4684 (11-25)

DENNIS ELLIOT from WLAV looking for medium-major marketing gig or small market PD. (412) 673-4370 (11-29)

CHIP HOBART formerly with WRKO, WBZ, CKLW looking for major market Top 40 gig or MOR. Call (916) 481-2237 (11-25)

DICK HOUSER looking for up-tempo conversational approach to MOR or T40 station, enjoy doing mornings. First ticket. Contact at 5421 Fifth Ave., Ft. Myers, Fla. 33901 or call (813) 936-4427 (11-29)

GARY MILLER, MD of WWHY-Huntington looking for position in Ohio, Kentucky, or West Virginia area. (304) 429-4901. (11-29)

BILL MAHONEY of WHAR-Clarksburg T40 station looking for a move up, in Northeast area. Third ticket, endorsed; four years experience. (304) 622-0777. (11-29)

Newsman from WLEE-Richmond, **AMOS B. MOSES**, mad cooking maniac available for decent price, formerly with WDJQ-Baltimore, WHYN-Springfield, WGNG, etc. Contact (914) 337-8331

GREG ALLEN of Longview, Washington available for MOR or Top 40 position as air talent. Also does production, has MD experience, etc. Call (206) 423-2159. (11-19)

DAVID BRYAN, MD of KSSS-Colo. Springs looking in and around Kansas City, Mo., metro area. Tapes and resumes available. (303) 596-5000 (11-18)

No. 1 Rated Personality MD of Southern Top 30 market seeks to return home to Midwest as PD of "Q" format or contemporary MOR -- Nine years in Top 50 markets, also assistant PD experience. Contact John, (312) 664-6389. (11-19)

CHANGES

CHUCK MORGAN (Tom Watson) to CHUM-Toronto from WQXI-FM as air talent.

DOUG DILLON from WWOK-Miami to KERE-Denver as PD.

HAL SMITH appointed new MD of WWOK-Miami with **RON TATAR** as his assistant.

DAN HALYBURTON from WWOK-Miami to WTVR-Richmond as Production Director.

JOHN CARTER new Prod. Director at WWOK-Miami and **JOEL KAPLAN** new Pro. Director at WIGL-Miami.

RANDY REEVES to WRFC-Athens from WRVQ-Richmond to do music.

CHARLIE CHASE from WKGN-Knoxville to WMAK-Nashville to do Noon to 3 p.m.

CHUCK CARTER to WQNZ-Natchez to do all nights. **DAVID KIMBRO** is now PD and MD of WQNZ.

ALAN BAXTER from WLCY-Tampa to WEEO-Waynesboro to do afternoons.

New PD at WWHY-Huntington is **Dick Johnson** from WTCR-Ashland, also will do 10-2 shift.

CHUCK GEIGER now doing music and production at KXFM-Santa Maria.

New men at KIKX-Tucson:

TERRY FOX, PD, and **RICH BRYAN**, MD.

Changes at KRNA-Iowa City:

Dave "Happy" Haney, 6-10 a.m.

Col. Darius Pope 10-3p.m.

Robbie Norton 3-7 p.m.

Ed "The Red" Rodriguez 7-Mid.

Steve "Mouse" Kingston Mid-6.

Chuck Spellman & Jim Keany - weekends.

New lineup at KTSA-San Antonio:

Bruce Hathaway 6-9 a.m.

David Klein 9-noon

Don Wagner Noon-3

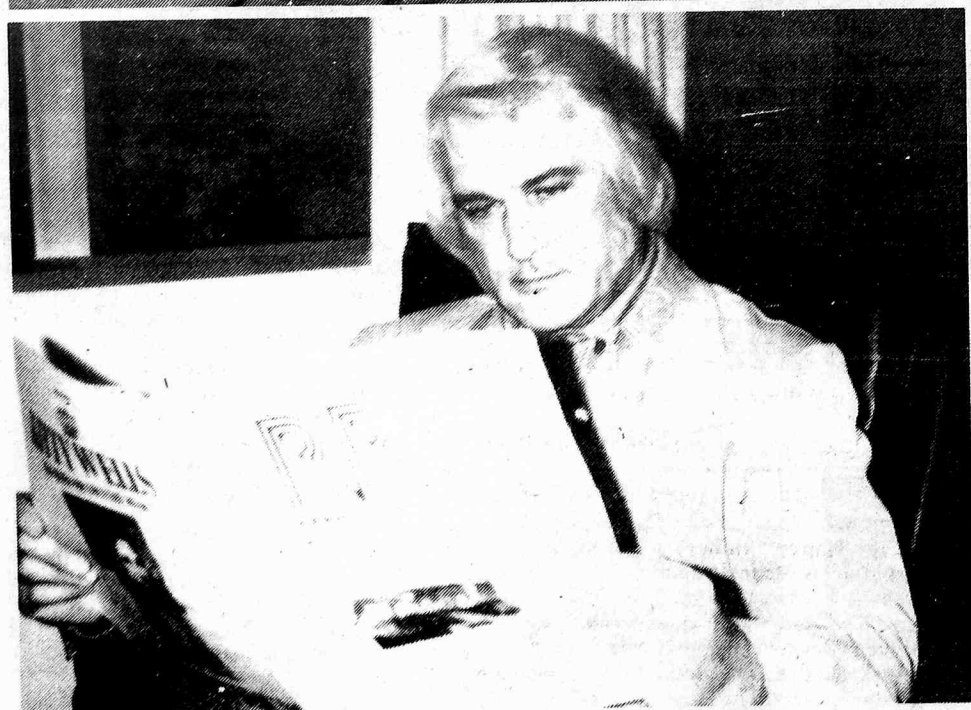
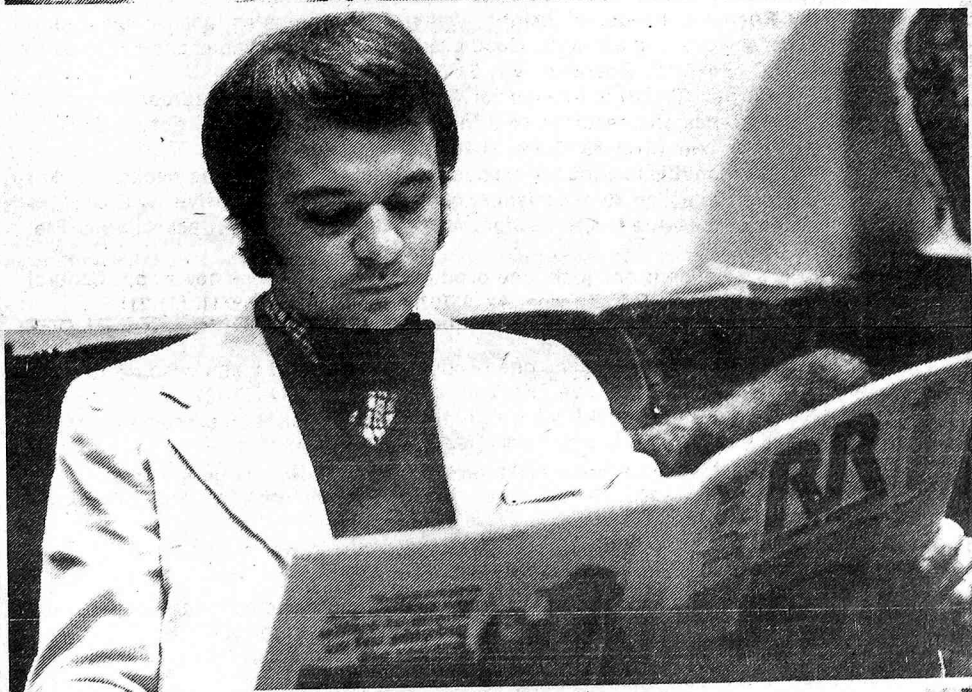
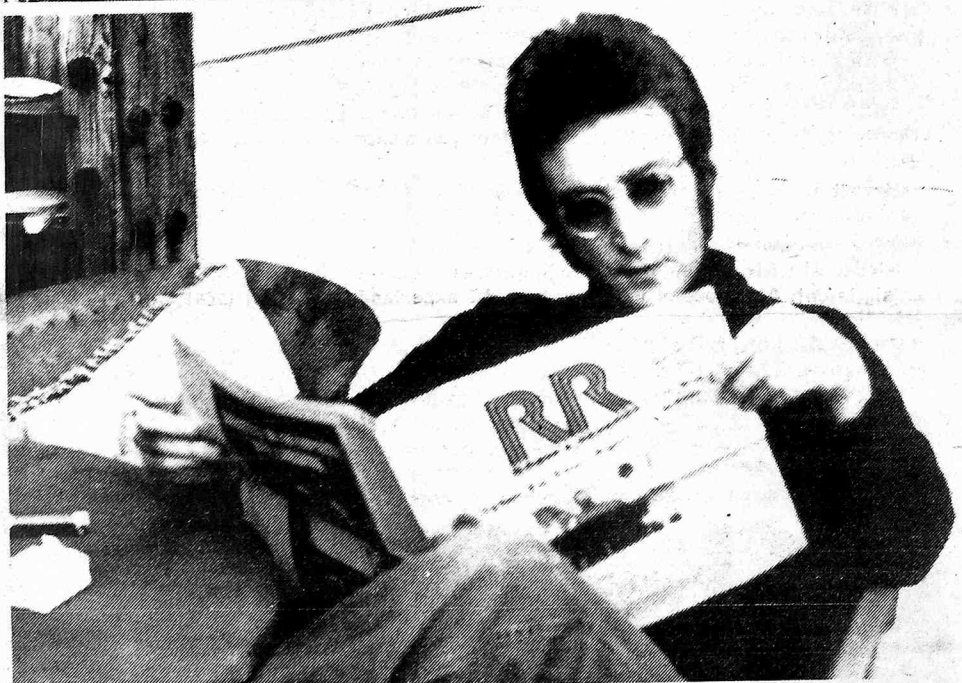
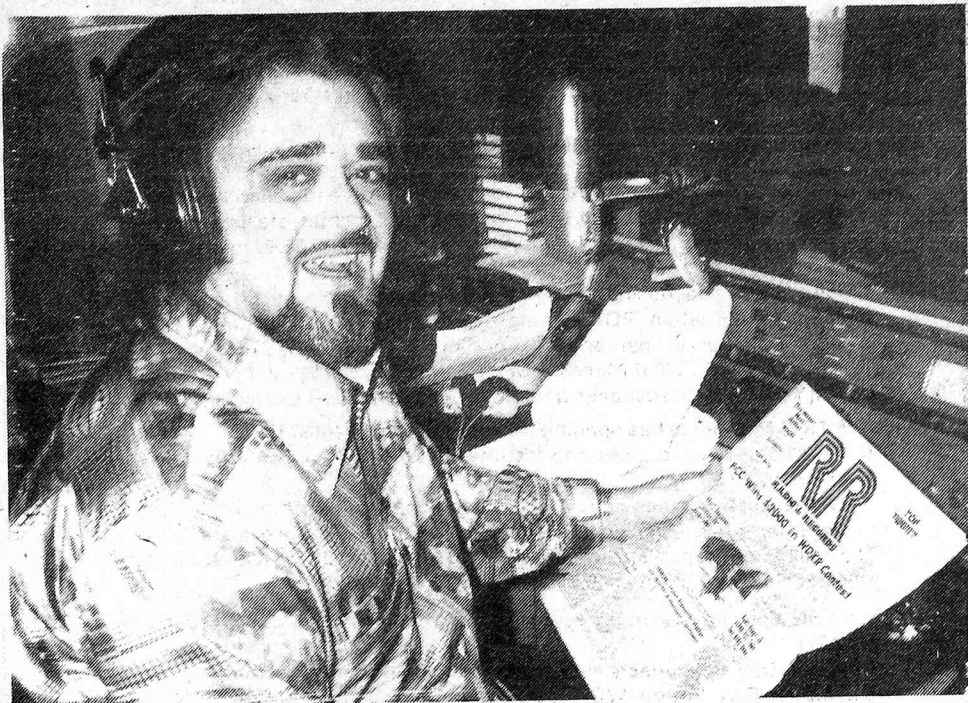
Lee Randall, PD 3-6 p.m.

Charlie Brown 6-10 p.m.

Sam Burke 10-2 a.m.

Larry Jackson 2-6 a.m.

WHAT SORT OF MAN READS R&R?



Answer Next Week...

ALBUMS

Mike Harrison/Editor

Radio & Records December 6, 1974

FM ROCK RADIO

BY MIKE HARRISON

LW:		Artist	Album	Label	Notes
1	1	ROLLING STONES	It's Only Rock 'N Roll	(Rolling Stones)	"Beg", "If You Can't," "Sister" all strong.
-	2	ELTON JOHN	Greatest Hits	(MCA)	He's hot.
4	3	JOHN LENNON	Walls & Bridges	(Apple)	"Night" slipping. "What You've Got" strong.
6	4	DAVID BOWIE	Live	(RCA)	Everything strong. Old studio "Changes" coming on.
28	5	LOGGINS & MESSINA	Mother Lode	(Columbia)	"Growin'" and everything.
2	6	JETHRO TULL	Warchild	(Chrysalis)	"Hurrah" lead the pack. "Jungle" huge.
3	7	NEIL DIAMOND	Serenade	(Columbia)	Single is hot.
5	8	JIM CROCE	Greatest Hits	(ABC)	His greatest hits.
14	9	JACKSON BROWNE	Late For The Sky	(Elektra)	"The Road And The Sky".
12	10	THE WHO	Odds & Sods	(MCA)	Long live rock.
19	11	HARRY CHAPIN	Verities & Balderdash	(Elektra)	"Cat's In The Cradle."
10	12	ROD STEWART	Smiler	(Mercury)	Everything strong. "Farewell."
7	13	LOU REED	Sally Can't Dance	(RCA)	"Sally Can't Dance."
16	14	ELO	Eldorado	(UA)	"Head" getting strong requests.
8	15	CHEECH & CHONG	Wedding Album (Ode)		"Pigs". Old Christmas single also out.
18	16	BACHMAN-TURNER	Not Fragile	(Mercury)	Still a strong album.
13	17	JACKSON FIVE	Dancing Machine	(Motown)	Single very hot, getting progressive play.
29	18	PHOEBE SNOW	Phoebe Snow	(Shelter)	"Let The Good Times Roll."
30	19	SANTANA	Borboletta	(Columbia)	Everything excellent.
25	20	JEFFERSON STARSHIP	Dragonfly	(Grunt)	"Ride The Tiger."
24	21	DAVE MASON	Dave Mason	(Columbia)	"Watchtower" and "Bring It On Home To Me."
-	22	OHIO PLAYERS	Fire	(Mercury)	Sizzlin' R&B. Take your pick.
11	23	TRAFFIC	When The Eagle Flies	(Asylum/Island)	Slipping.
9	24	AMERICA	Holiday	(WB)	"Lonely People."
-	25	J. GEILS	Nightmares	(Atlantic)	"Must Of Got Lost."
-	26	BARBRA STREISAND	Butterfly	(Columbia)	MOR. Everything strong.
15	27	NEKTAR	Remember The Future	(Sire)	The new single composite is important.
-	28	RINGO STARR	Goodnight Vienna	(Apple)	Single and title track lead the way.
-	29	HELEN REDDY	Free And Easy	(Capitol)	Single strong.
-	30	THE MOODY BLUES	This Is The Moody Blues	(Threshold)	Their greatest hits.

The R&R Album Chart is based on a combination of play, requests, & retail sales.

Just got back from New York where I did lots of listening. Much happening.

Musically -- Elton John dominates the dial. With all the rocker in town, a listener is never more than five minutes away from "Lucy In The Sky With Diamonds." Wherever I went, people were scrounging and begging for Elton John tickets. 99X had him on the air rapping with the boppers in conjunction with his New York concert -- came off quite well. The station also had a batch of weird features making it a sort of teenage audio Disneyland, such as high school cheerleaders phoning in their team cheers followed by a shotgun jingle. Clifton really got the station cookin' while he was there.

I think the sport of dancing went into the closet and bathroom during the late sixties, early seventies. But, they've come out and disco is incredibly huge in the big city. Neil McIntyre, one of the best radio men in the country who runs WPIX, has the station jumping in both sound and ratings. On Saturday night they feature a show of all dance music and it's doing well. WPIZ also has a new female jock, Alex Hayes, who handles the overnight real smooth. They promote her as "Alex Hayes -- not just any guy." She proves that the argument that "women can't handle Top 40" is wrong.

WNEW, one of the nation's premier progressive rockers, still sounds as solid as ever -- proceeding with a know-how and confidence that defies some of the upheld theories of programming and research, yet works. However, FM rock radio has lost one of its foremost GMs with WNEW-FM, Varner Paulsen, switching over to their legendary AM outlet. It was somewhat of a surprise. I'm sure he'll do well.

The new WQIV is off and running with their all quad progressive rock format. I heard Tom O'Hare, former KSAN PD, and he lived up to all the good things I've heard about him. They've got Roscoe on at night. He played an important role in the initial development of progressive radio in New York. It will be interesting to see how the city responds to him after his three year vacation.

WPLJ, the ABC-FM rocker, sure has its music research down consistently cranking out just about everybody's favorites without sounding like a Top 40 operation. They walk that very fine line between -- differing mass consciousnesses and with a degree of consistency and a bit of luck have the kind of format that can come up with the big book.

In the center of the dial CBS-FM has reverberated it's way to the highest FM ARB in the country with an oldies format that features everything from Perry Como's "Round And Round" to "Longfellow Serenade."

New York is a city that has a ton of musical and radio movements going on at the same time. Disco, Folk, Top 40, Oldies, Progressive and an extremely strong R&B and Jazz scene. It's a real trip.

To Don Hoffman: Thanks for pointing out my error. I narrowed the time down too small to make a broader and correct point. You're on your toes!

Suggested New Products:

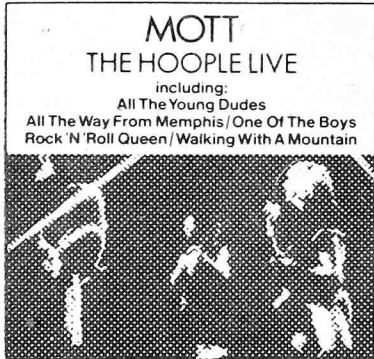
WEISBERG



TIM WEISBERG 4 (A&M)

Flute arrangements add class to any progressive station.

MOTT



THE HOOPLE LIVE (COL.)

Their classics, live.

BURDON

THE ERIC BURDON BAND



SUN SECRETS (CAPITOL)

"The Real Me" is top cut so far.

QUEEN

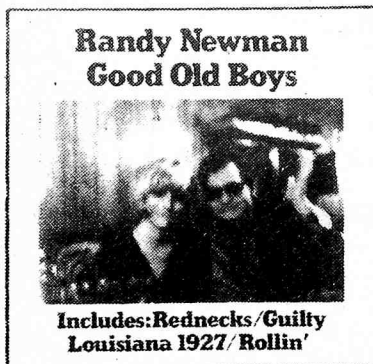


SHEER HEART ATTACK (ELEKTRA-ASYLUM)

English group always gets requests and sales.

COMING THROUGH:

NEWMAN



GOOD OLD BOYS (WB)

Typical offbeat Newman gems. Listen to "Redneck."

FOGHAT



ROCK & ROLL OUTLAWS (WB)

Title track leads.

MOODIES



THIS IS THE MOODY BLUES (LONDON/THRESHOLD)

All their best. Huge sales.

RONSTADT



HEART LIKE A WHEEL (CAPITOL)

"You're No Good." Try also "When Will I Be Loved."

THE PARALLELS:

PARALLELS are simply designations to make station comparisons easier.

P1: Top 15 markets with playlist size of 30. Power record rotation of 7-10 records.

P2: All other markets outside of top 15 with 30 record playlist size, 7-10 power record rotation

P3: All markets with excess of 35 records being played. Power record rotation varies.

A

PAUL ANKA - 2:58
*One Man Woman/
One Woman Man (UA)*
LP: Anka

P1	P2	P3
WRKO a 30 WLS a 21	WGNG d 27 KUPD a WIFE a WRIE 25-22 WVOV 12-8 KRSP 23-23 WGRQ 16-15 WNOR a 30	WCFL 21-16 WMAK d 30 KQWB 31-25 WISM 23-21 WGH 35-32 WAKY a WKLO 22-21 KEEL 22-18 WPOP 26-24 WLPL a WFOM 21-15 WBBQ 28-19 CHUM 18-12 WROK 22-18 WYSL 23-22 KYSN a 37 WBGW 25-22 WROV d 27 WRFC 23-21 WEEQ 38-31 KDZA 39-33 WORD on WLEE d 26

B

BACHMAN-TURNER - 3:29
*Ain't Seen Nothing Yet
(Mercury)*
LP: Not Fragile

P1	P2	P3
KHJ 5-8 K100 5-7 KFRC 7-7 WABC 7-6 99X 16-19 WFIL 11-13 KSTP 7-18 13Q 19-21 WPEZ 12-16 KQV 11-17 WQXI 11-20 WLS 9-15 WPGC 27-34	WSAI 9-17 WYRE 7-10 WAVZ 19-27 WGNG 12-22 WYND 10-17 KEZY 15-16 WGRD 23-27 KUPD 11 Y100 17-23 WIFE 12-18 WVOV on WOW 5-6 WBBQ 6-14 WBBF 8-12 KRSP 12-22 WGRQ 9-18 WKBW 7-13 KTLK 17-25 WNOR 2-9	WCFL 11-19 WMAK 12-19 KQWB 7-11 KJR 11-12 KING 5-5 KAFY 12-22 WISM 16-20 WGH 15-21 WKLO 14-15 WPOP 11-12 WLPL 6-25 CHUM 4-9 WROK 14-19 WYSL 9-16 KDON 9-23 KDZA 9-15 WORD 17-17

DAVID BOWIE - 2:32
Changes (RCA)
LP: Hunky Dory

P1	P2	P3
13Q 1-1 WPEZ 5-4 KQV 2-2 WQXI on	KUPD a WBBF 4-4	KQWB a 39 WGH on n WKLO 38-36 KYSN a WROV on WRFC on WEEQ 41-33

B.T. EXPRESS - 3:09
Do It (Scepter)
LP: Do It

P1	P2	P3
KHJ 8-5 K100 8-9 KFRC 5-8 WABC 6-10 99X 4-8 WFIL 7-9 13Q 22-19 KQV 8-9 WRKO 15-12 WQXI 9-13 WLS 18-14 WPGC 3-5	WAYS 4-2 WYRE 5-5 WAVZ 7-6 WGNG 16-10 WYND 9-6 KAKC 4-2 KEZY 12-14 KUPD 4 Y100 6-8 WIFE 14-10 WBBQ 3-2 WNOE 13-12 WBBF 24-24 KRSP d 30 WGRQ 8-8 KYSN 21-19 WKBW 5-11 WNOR 9-14	WCFL 14-9 WMAK 18-15 KJR 27-25 KAFY 8-6 WISM 6-5 WGH 4-11 WAKY 18-23 WPOP 15-17 WLPL 15-12 WFOM 7-7 CHUM a WROK 17-14 WYSL 5-5 KDON 3-3 KJOY 14-11 WROV 16-14 WEEQ 14-8 KDZA 16-14 WORD 7-8 WLEE 6-14

SHIRLEY BROWN - 3:54
Woman To Woman (Truth)

P1	P2	P3
99X 7-14	WAYS 8-3 WGNG 27-25 WNOE 5-5 WBBQ 23-17 WGRQ 6-11	WMAK 19-14 WBBQ on WYSL d 29 WBGW d 24 KDON 25-17 KJOY 9-5 WRFC 10-5 WORD 3-7 WLEE d 27

C

CARL CARLTON - 2:20
Everlasting Love (Back Beat)
LP: Everlasting Love

P1	P2	P3
K100 20-20 KFRC 14-20 WABC 5-5 99X 6-11 WFIL 13-12 KSTP 4-5 WRKO 10-15 WLS 8-9 WPGC 20-31	WAVZ 11-15 WGNG 8-9 WYND 11-8 KTKT 12-19 KEZY 17-19 Y100 10-14 WIFE 7-13 WRIE 5-10 WOW 6-9 WBBF 10-9 WGRQ d 23 WKBW 4-7 WNOR 7-7	WCFL 13-24 WMAK 10-12 KJR 8-10 KING 13-11 KAFY 11-16 WISM 9-13 WGH 9-15 WAKY 16-20 WKLO 13-14 KEEL 9-14 WPOP 17-22 WFOM 4-2 CHUM 7-11 WROK 6-8 WYSL 4-9 KYSN 14-14 KDON 12-32 KDZA 11-17 WLEE 4-28

CARPENTERS - 2:48
Please Mr. Postman (A&M)

P1	P2	P3
KHJ 19-17 K100 18-17 KFRC 24-24 WFIL 19-15 KSTP d 17 KQV 24-23 WRKO 25-23 WQXI 22-19 WLS a WPGC 33-27	WSAI 25-24 WAYS 21-16 WYRE 30-24 WAVZ 20-14 WGNG 26-21 WYND 20-10 KAKC 27-26 KTKT 22-15 KEZY 19-15 WGRD a 30 KUPD 27 Y100 21-16 WIFE 28-17 WRIE 31-23 WVOV 18-9 WOW a 17 WBBQ 25-19 WNOE 17-13 WSGA 23-18 KRSP 27-24 KYSN 28-25 WKBW a 26 KTLK 21-16	WMAK d 28 KQWB 34-26 KJR 22-7 KING d 20 KAFY 29-21 WISM d 26 WGH 40-37 WAKY 30-25 WKLO 28-26 KEEL 30-22 WPOP 27-26 WLPL d 36 WFOM 33-28 WBBQ 26-22 CHUM on WROK a 35 WYSL 30-28 KYSN 28-20 WBGW d 25 KDON 26-20 KJOY 27-21 WROV d 25 WRFC d 30 WEEQ 23-18 KDZA 36-21 WORD on WLEE d 23

HARRY CHAPIN - 3:44
Cat's In The Cradle (Elektra)
LP: Verities & Balderdash

P1	P2	P3
KHJ 10-7 K100 11-4 KFRC 15-10 WABC 13-8 99X 10-6 WFIL 10-4 KSTP 2-2 13Q 4-3 WPEZ 4-5 KQV 3-8 WRKO 3-2 WQXI 19-16 WLS 2-2 WPGC 2-2	WSAI 1-1 WAYS 6-7 WYRE 9-4 WAVZ 14-9 WGNG 7-5 WYND 1-1 KAKC 25-21 KTKT 13-14 KEZY 9-1 WGRD 7-3 KUPD 5 Y100 5-5 WIFE 18-24 WRIE 6-3 WVOV on WOW 3-3 WBBQ 10-6 WNOE 21-17 WSGA 3-3 WBBF 6-5 KRSP 2-1 WGRQ 10-6 KYSN 20-17 WKBW 25-19 KTLK 6-10 WNOR 3-3	WCFL 3-1 WMAK 2-5 KQWB 3-4 KJR 3-1 KING 3-3 KAFY 7-10 WISM 4-4 WGH 8-2 WAKY 4-4 WKLO 3-6 KEEL 14-15 WPOP 18-8 WLPL 12-9 WFOM 23-19 CHUM 29-18 WROK 4-3 WYSL 7-17 KYSN 3-7 WBGW 9-12 KJOY 5-4 WROV 5-3 WRFC 7-7 WEEQ 6-3 KDZA 6-4 WLEE 10-3

CHICAGO - 2:54
Wishing You Were Here (Col)

LP: Chicago VII

P1	P2	P3
KFRC 25-23 WFIL 9-11 KSTP 6-14 13Q 24-29 WPEZ 10-12 KQV 12-19 WLS 11-13 WPGC 8-14	WSAI 17-13 WAYS 17-13 WYRE 6-9 WAVZ 13-11 WYND 5-7 WGRD 8-11 KUPD 8 WRIE 7-8 WOW 18-18 WBBQ 7-12 WBBF 11-13 KRSP 10-17 WGRQ 5-12 KYN 6-3 KTLK 10-20 WNOR 15-16	WCFL 15-25 KQWB 9-8 KJR 9-19 KING 9-9 KAFY 14-24 WISM 10-8 WGH 7-5 WAKY 5-7 WKLO 4-8 KEEL 5-13 WPOP 16-13 WFOM 12-10 WBBQ 10-5 CHUM 22-15 WROK 22-12 KYSN 12-8 WBGW 18-20 KDON 11-7 WROV 9-8 WEEQ 19-29 KDZA 5-8 WLEE 11-11

ERIC CLAPTON - 3:10
Willie and Hand Jive (RSO)

LP: 461 Ocean Blvd.

P1	P2	P3
WPGC 25-25	WGNQ 20-20 WIFE on WRIE 32-30 WVOV 7-11 KYSN 26-24 WNOR 21-19	WGH 27-19 WBBQ 12-4 KYSN 18-16 WBGW 16-16 KDON 20-16 WROV d 26 KRFC 19-16 WEEQ 34-28 KDZA a 40

D

MAC DAVIS - 3:19
Rock 'N Roll (Columbia)

P1	P2	P3
KHJ 27-24 K100 d 27 WQXI a	KYNO d 30	WMAK 38-34 KQWB a KJR a KING on KAFY d 27 WISM a WAKY on WKLO 39-37 WFOM d 38 WROV WEEQ a 41 WORD a KREM a

PAUL DAVIS - 3:52
Ride 'Em Cowboy (Bang)

LP: Ride 'Em Cowboy

P1	P2	P3
K100 on KSTP 14-13 13Q 3-4 WPEZ 10-14 KQV 6-6 WQXI 8-11	WAYS a 24 WYRE 24-23 XROX a WYND 14-14 KAKC d 29 KTKT 3-4 KUPD 29 Y100 22-17 WIFE 29-22 WRIE 29-28 WVOV 9-5 WSGA 14-9 WBBF 15-19 KRSP 4-3 KYSN 29-27 WLOB a KTLK 4-4	WMAK 6-4 KQWB 5-7 KJR 17-18 KAFY a WISM 24-19 WGH a 38 KEEL 4-9 WPOP a n WFOM 5-3 WROK 30-22 KYSN 16-11 KJOY 7-15 WMC FM a WRFC 3-2 WEEQ 18-13 KDZA 22-11 WLEE on

KIKI DEE BAND - 3:40
Got The Music In Me (Rocket)

LP: I've Got The Music In Me

P1	P2	P3
KHJ 11-10 K100 14-16 KFRC 11-12 99X 12-15 WFIL 18-18 KSTP 11-22 13Q 21-16 WPEZ a 23 KQV 7-4 WQXI 24-23 WPGC 18-21	WAYS 18-17 WYRE 13-13 WAVZ 9-12 WGNG 13-13 XROK a WYND 15-13 KAKC 12-18 KEZY 10-9 WGRD 21-24 KUPD 23 Y100 14-11 WIFE 6-3 WVOV 5-12 WNOE 23-19 WSGA 19-14 WBBF a 30 WGRQ 24-17 KYSN 11-14 WKBW 23-21 KTLK 15-24 WNOR 20-24	WCFL 18-30 WMAK a KING 19-16 KAFY 9-12 WGH 13-20 WPOP 12-18 CHUM 10-8 KYSN 25-23 KDZA 12-18 WORD on

JOHN DENVER - 4:42
Back Home Again (RCA)

LP: Back Home Again

P1	P2	P3
WFIL 15-26 WRKO 17-18 WQXI 6-9	WSAI 14-18 KEZY 3-8 WGRD 11-17 Y100 24-26 KAKC 11-6 WOW 10-12 WNOE 12-16 KYSN 13-15 WKBW 11-9 WNOR 14-15	WCFL 30-35 KING 12-14 WGH 20-21 WAKY 20-21 WKLO 12-13 WBBQ 9-18 WROK 16-21 WBGW 6-10

NEIL DIAMOND - 3:22
Longfellow Serenade (Col)

LP: Serenade

P1	P2	P3
K100 16-25 KFRC 8-6 WABC 9-9 KSTP 12-10 13Q 15-15 KQV 11-18 WRKO 13-17 WLS 5-10 WPGC 9-9	WSAI 6-5 WYRE 16-16 WAVZ 4-4 WGNG 5-4 WYND 7-15 KAKC 16-25 KTKT 6-6 KEZY 8-13 WGRD 2-5 KUPD 6 Y100 13-19 WIFE 1-2 WRIE 2-7 WOW 8-8 WBBQ 5-8 WBBF 20-14 KRSP 11-6 WGRQ 7-14 KYSN 2-6 WKBW 13-20 WNOR 12-13	WCFL 5-7 WMAK 7-6 KQWB 17-18 KJR 13-17 KING 6-6 KAFY 13-18 WISM 5-7 WGH 6-14 WPOP 7-15 WLPL 5-10 WFOM 6-6 WBBQ 6-25 CHUM 12-7 WROK 15-11 WYSL 18-27 KYSN 5-3 WBGW 15-15 WROV 14-11 WEEQ 7-12 KDZA 4-7 WLEE 5-21

CARL DOUGLAS - 3:18
Kung Fu Fighting (20th)

LP: Kung Fu Fighting & Other Great Love Songs

P1	P2	P3
KHJ 3-2 K100 2-1 KFRC 1-3 WABC 4-3 99X 2-2 WFIL 4-3 KSTP 1-1 13Q 2-2 KQV 1-1 WRKO 1-1 WQXI 2-2 WLS 1-1 WPGC 4-3	WSAI 3-3 WAYS 1-1 WYRE 1-1 WAVZ 2-1 WGNG 2-2 WYND 3-4 KAKC 1-1 KTKT 1-1 KEZY 7-4 WGRD 1-1 KUPD 2 KCBQ 1-1 Y100 1-2 WIFE 9-1 WYSL 9-1 WOW 4-4 WNOE 3-1 WSGA 5-27 WBBF 1-1 KRSP 1-2 WGRQ 2-2 KYSN 3-2 WKBW 1-1 KTLK 3-2 WNOR 8-2	WCFL 4-2 WMAK 1-1 KQWB 2-3 KJR 6-9 KAFY 1-1 WISM 2-1 WGH 2-1 WAKY 5-5 KEEL 1-3 WPOP 2-1 WLPL 4-3 WROK 15-12 WBBQ 1-2 WYSL 2-1 KYSN 1-2 WBGW 1-1 KDON 1-1 KJOY 1-7 WROV 2-1 WRFC 1-1 WEEQ 2-4 KDZA 1-1 WORD 1-1 WLEE 2-1

CAROL DOUGLAS - 2:47
Doctor's Orders (Midland)

P1	P2	P3
KHJ a 26 KFRC a 28 99X a 21 WPEZ 1-1 WRKO 20-14	WAYS 1-1 WAVZ a KAKC a KEZY on WSGA a 29 WGRQ d 28	WGH on n KEEL a 27 WFOM 40-35 WROK 33-31 WYSL a WBBQ 30-27 KJOY a WROV d 28 WRFC 25-23 WEEQ d 37

E

THE EAGLES - 3:25
Best Of My Love (Asylum)

LP: On The Border

P1	P2	P3
13Q 30-27	WSAI 29-22 WYRE a WGRD d 22 KUPD a KTKT a 29 WRIE a WNOE 25-20 WSGA a 30 WGRQ a	WCFL d 33 KJR a WISM on WAKY a KEEL d 37 WLPL d 25 WFOM d 37 WBBQ d 28 WROK a WROV a WRFC a WEEQ d 38 KSJO a

F

FANCY—2:45
Touch Me (Big Tree)

LP: Wild Thing

P1	P2	P3
	WVOV on	KQWB 12-6 WGH 29-24 WAKY 17-22 WKLO 20-19 WBBQ 15-11 WROK 28-26 KYSN 13-24

G

GLORIA GAYNOR—2:55
Never Can Say Goodbye (MGM)

P1	P2	P3
KHJ 25-23 K100 25-23 KSTP a WRKO 11-11 WQXI 30-25	WSAI 23-16 WAVZ 25-25 WGNG 29-24 KAKC d 30 KUPD a Y100 25-22 WIFE a WNOE d 25 WSGA 28-25 KRSP d 29 WGRQ 23-21 KYNO 20-26 KTLK 40-34 WJBQ a	KQWB a 37 KAFY d 29 WOP 28-28 WLPL d 28 WFOM 38-33 WBBQ on CHUM a WYSL 25-20 KYSN a WBGN on KDON a KKAM a KJOY 29-14 WROV 26-20 WRFC on WEEQ d 30 KDZA 41-35 Z96 a 28 WLEE on

J. GEILS BAND—2:53
Must Of Got Lost (Atlantic)

LP: Nightmares...

P1	P2	P3
KHJ 9-9 K100 on KSTP on KQV a n WPGC d 35	WYRE 28-25 WAVZ 22-21 WGNG 15-11 KAKC 24-22 KTKT 29-25 KUPD 19 WIFE on WVOV 7-14 KYNQ d 23 KTLK 29-26 WNOR 29-26	WCFL 20-17 KQWB 36-31 KING on WISM d 29 WGH 37-34 WKLO 29-29 WFOM 25-20 WBBQ 16-15 WBGN on KDON 24-22 KJOY 13-10 WMC FM a WRFC on WEEQ d 39 KDZA 38-34 WORD on WLEE d 30

CARL GRAVES—3:15
Baby, Hang Up The Phone (A&M)

P1	P2	P3
	WNOE 24-24	WISM on KEEL d 29 WBBQ on KYSN on WBGN 20-17 KDON 30-26 KJOY 26-23 WORD on

AL GREEN—2:56
Sha-La-La (Hi)

LP: Explores Your Mind

P1	P2	P3
KHJ 4-4 K100 6-5 KFRC 4-4 WFIL 14-10 WLS 21-19 WQXI 5-7 WPGC 11-10	WYRE 23-21 WGNG a KTKT 19-13 KEZY 5-5 WGRD 13-13 KUPD 21 Y100 a 20 WIFE 27-27 WOW 17-19 WBBQ 12-23 WNOE 9-7 WKBW a 30 KYNO 27-23 WNOR 16-11	WCFL 19-14 WMAK 25-21 KJR 10-20 KING 16-18 KAFY 4-7 WISM 12-11 WGH 5-4 WAKY 22-25 WKLO 19-25 KEEL 7-4 WPOP 29-29 WLPL 17-17 WFOM 10-9 WBBQ 3-3 CHUM a WROK 13-10 WYSL 22-24 KYSN 33-29 WBGN 26-21 KDON 8-4 KJOY 22-17 WRFC 5-4 WEEQ 9-5 KDZA 15-13 WORD 13-9 WLEE 14-4

GUESS WHO—3:15
Dancin' Fool (RCA)

LP: Flavours

P1	P2	P3
KSTP on	WYRE d 29 KEZY on WVOV a KRSP 30-28 KYNO a KTLK 31-23	KQWB 24-21 KJR 26-23 KING on KAFY 24-23 WISM on WGH on n WKLO 36-34 WLPL 28-23 WFOM 34-29 WBBQ on CHUM on WROK 35-32 KYSN 23-22 WROV 23-21 KDZA a 42 WRFC on

GEORGE HARRISON—3:52
Dark Horse (Apple)

P1	P2	P3
KSTP d 26 KQV a n	WYRE 21-19 WGNG 28-26 KTKT 25-20 KUPD 16 WVOV d 18 WSGA 22-19 KRSP 17-14 WGRQ 29-26 KYNO 23-21 KTLK 33-29 WNOR a 29	KING on WISM 27-24 WGH a 40 WAKY 23-19 WKLO 24-23 WPOP 25-25 WLPL 22-16 WFOM 31-22 CHUM on WROK on WYSL on KYSN 30-27 KDON 32-28 KJOY 10-9 WROV 28-22 WRFC 30-25 WEEQ 30-22 KDZA a 39 WORD on WLEE d 29

BO DONALDSON & THE HEYWOODS—2:58
The Heartbreak Kid (ABC)

P1	P2	P3
	KTKT 24-22 KRSP 8-10 WNOR d 28	KQWB 41-36 KAFY d 30 WISM on KEEL 20-24 WLPL on WBBQ on WYSL on WBGN on

HUDSON BROTHERS—3:45
So You Are A Star (Casablanca)

LP: Hollywood Situation

P1	P2	P3
WPGC 22-19	WSAI 15-15 WRIE 17-20 WBBQ 19-18 KYNO 14-18 WKBW 6-8	WCFL 16-20 WISM 21-22 WAKY 12-16 WKLO 15-20 WROK 21-16 WYSL 6-13 WBGN 27-26 KDZA 23-31

HUES CORPORATION—3:06
Rockin' Soul (RCA)

LP: Rockin' Soul

P1	P2	P3
	WRIE 14-19	KING on KAFY 20-15 KING a KAFY d 28 WISM 29-23 WGH 38-35 WKLO 18-27 WPOP 23-23 WLPL 24-13 WFOM 28-25 WBBQ 13-6 WROK 19-15 WYSL 16-15 KJOY 3-3 WROV 30-24 WRFC 28-24 WEEQ 31-24 KDZA 24-20 WLEE d 24

JETHRO TULL—3:20
Bungle In Jungle (Chrysalis)

LP: War Child

P1	P2	P3
KHJ 15-13 K100 15-19 KFRC 16-17 WFIL 22-21 KSTP 10-9 13Q 5-5 WPEZ 13-7 KQV 5-3 WRKO 5-8 WQXI 29-28 WPGC 31-24	WSAI 30-26 WAYS 24-22 WYRE 25-22 WAVZ 12-10 WGNG 18-15 WYND 19-9 KAKC 18-14 KTKT 10-5 WGRD 18-12 KUPD 15 WIFE d 29 WBBQ 9-5 WSGA 18-15 KRSP 20-20 WGRQ 25-24 KYNO 9-4 KTLK 16-12 WNOR 25-20	WMAK 27-22 KQWB 27-24 KJR 28-22 KING a KAFY d 28 WISM 29-23 WGH 38-35 WKLO 18-27 WPOP 23-23 WLPL 24-13 WFOM 28-25 WBBQ 13-6 WROK 19-15 WYSL 16-15 KJOY 3-3 WROV 30-24 WRFC 28-24 WEEQ 31-24 KDZA 24-20 WLEE d 24

ELTON JOHN—5:58
Lucy In The Sky With Diamonds (MCA)

P1	P2	P3
KHJ 20-9 K100 24-11 KFRC 27-15 WABC 25-15 99X 13-4 WFIL 23-16 KSTP 29-6 13Q 10-8 WPEZ 22-10 KQV 14-5 WRKO 22-13 WQXI 18-10 WLS 30-12 WPGC d 22	WSAI 27-21 WAYS 16-12 WYRE 29-20 WAVZ 28-20 WGNG 25-16 WYND 21-16 KAKC 30-24 KTKT 26-21 KEZY 14-7 WGRD 16-10 KUPD 20 Y100 12-3 WIFE d 28 WRIE 37-25 WVOV 16-6 WOW 20-15 WBBQ 27-20 WNOE 22-18 WSGA 9-6 KRSP 28-18 WGRQ 20-10 KYNO 25-22 WKBW 20-4 KTLK 20-8 WNOR 24-12	WCFL 31-12 WMAK d 23 KQWB 37-29 KJR 19-11 KING d 15 KAFY 26-20 WISM 26-18 WGH 39-36 WAKY 28-14 WKLO 34-10 WPOP 24-14 WLPL 29-18 WFOM 37-31 WBBQ 29-10 CHUM d 21 WROK 26-20 WYSL 14-6 WBGN d 30 KDON 21-12 KJOY 19-12 WRKO 21-12 WRFC 27-22 WEEQ 28-20 KDZA 33-19 WORD d 25 WLEE d 16

ANDY KIM—3:25
Fire, Baby On Fire (Capitol)

LP: Andy Kim

P1	P2	P3
	WIFE on	WCFL 17-27 WISM 28-27 WGH 33-30 WLPL 26-21 WFOM 20-17 CHUM 20-16 KYSN 11-10 WEEQ 20-17 KDZA 40-36

GLADYS KNIGHT & PIPS—2:48
I Feel A Song (Buddah)

LP: I Feel A Song

P1	P2	P3
KHJ a 30 K100 d 27 KFRC 17-18 WRKO 30-25 WQXI 21 -21	WAVZ 26-22 KAKC 19-16 WBBQ 17-7 WGRQ 17-13 KYNO on WKBW 16-16	WCFL 27-23 WMAK d 29 KAFY 28-26 WISM 30-28 WGH 31-27 KEEL 13-12 WLPL on WFOM 29-23 WBBQ 19-9 WYSL 28-18 KYSN 4-6 KDON 10-5 WEEQ 8-2 KDZA 37-32 WRFC 20-14 WLEE 17-15

LYNYRD SKYNYRD—4:41
Free Bird (MCA)

LP: Pron. Leh-nerd Skin-nerd

P1	P2	P3
KSTP on WPEZ d 22 WQXI 20-18	WAYS 22-18 WGRD d 20 KUPD 28 WSGA 27-17 WBBQ 14-10 KRSP on WGRQ 1-1 WKBW 8-6	WMAK 4-7 KJR 30-27 WISM on WGH n WAKY 15-10 WKLO 21-9 WFOM 39-34 WBBQ a WROK on WYSL 10-2 WBGN 7-3 WRFC d 27 KJOY 30-20 WROV 20-16 WEEQ 22-16 WORD 14-16

BARRY MANILOW—3:15
Mandy (Bell)

LP: Barry Manilow II

P1	P2	P3
KHJ a 29 K100 a KFRC 30-26 WFIL d 24 KSTP 27-15 13Q 20-14 WPEZ a 25 KQV d 24 WRKO a 29 WQXI d 27 WPGC d 26	WSAI a 30 WAYS a 23 WYRE 22-11 WAVZ 30-28 WGNG 30-28 KTKT 28-23 KUPD 25 WRIE 22-21 WBBQ 21-13 WSGA 29-24 KRSP 16-9 KTLK 25-15 WNOR a	WMAK d 27 KQWB 28-22 KJR 25-15 KING on KAFY a WISM a WGH 30-25 WAKY a WKLO a 39 KEEL 15-10 WPOP 30-27 WLPL 13-5 WFOM 35-32 WBBQ on

Manilow continued.....

WROK on
WYSL 29-19
KYSN 40-32
WBGN 28-23
KJOY 28-24
WROV d 23
WRFC d 29
WEEQ 36-26
KDZA 31-25
WORD on
Z96 a 27
WLEE a

MCCARTNEY & WINGS—3:03
Junior's Farm (Apple)

P1	P2	P3
KHJ 9-11 K100 10-15 KFRC 19-19 WABC 21-14 99X 17-13 WFIL 21-14 KSTP 24-12 13Q 27-26 KQV 17-16 WRKO 8-5 WQXI 14-14 WLS 10-8 WPGC 5-4	WSAI 13-12 WAYS 19-15 WYRE 10-7 WAVZ 24-23 WGNG 17-14 WYND 13-11 KAKC 8-5 KTKT 8-7 KEZY 16-12 WGRD 15-8 KUPD 10 Y100 7-10 WIFE 21-15 WRIE 18-14 WVOV 11-7 WOW 15-10 WBBQ 15-4 WNOE 11-9 WSGA 6-5 KRSP 15-11 WGRQ 11-5 KYNO 10-8 WKBW 15-12 KTLK 13-11 WNOR 19-18	WCFL 9-4 WMAK 15-10 KQWB 18-13 KJR 14-8 KAFY 15-8 WISM 14-10 WGH 18-9 WAKY 6-3 WKLO 16-38 KEEL 19-17 WPOP 13-9 WLPL 14-11 WFOM 18-11 WBBQ 2-1 CHUM 8-6 WROK 8-7 WYSL 8-10 KYSN 6-5 KDON 15-13 KJOY 12-18 WROV 10-7 WRFC 18-13 WEEQ 10-7 KDZA 8-6 WORD 25-22 WLEE 29-8

DONNY & MARIE—2:47
Morning Side Of The Mountain (MGM)

LP: I'm Leaving It All Up To You

P1	P2	P3
KHJ a 25 KSTP d 28 WRKO a 28 WQXI d 29	WAVZ a 30 WGNG a WRIE on KRSP 29-27	KQWB 39-33 KEEL 24-20 WFOM 36-30 WBBQ on CHUM on WRFC 24-20

POINTER SISTERS—3:11
Fairytale (Blue Thumb)

LP: That's A Plenty

P1	P2	P3
KFRC ra 22 WQXI 15-12	WAYS 11-20 WGNG a KAKC 13-7 KTKT 7-8 WIFE 26-21 WRIE 35-24 WSGA 7-7 KYNO 18-13 KTLK d 31	WCFL 26-21 KQWB 16-16 KJR 29-26 KAFY 17-11 WISM 17-14 WAKY 19-15 WKLO 40-24 KEEL 11-7 WPOP on WFOM 19-14 WBBQ 4-8 WROK 25-23 KYSN 31-28 WBGN 3-6 KDON 23-18 KJOY 6-2 WROV 3-2 WRFC 9-10 KDZA 27-22 WORD 4-2 WLEE 24-20

ELVIS PRESLEY—2:50
Promised Land (RCA)

P1	P2	P3
KSTP 20-27 WQXI 23-17 WPGC 24-20	WAYS 10-11 KUPD 24 WRIE 15-11 WVOV on WBBQ 28-22 WSGA 26-23 WGRQ 30-27 WNOR 22-22	WMAK 11-8 KQWB 20-14 KJR 23-14 WISM on WGH 19-12 WAKY 2-5 WKLO 6-7 KEEL 27-23 WLPL d 29 WFOM 9-4 WBBQ 11-20 WROK a WBGN d 29 WRFC 14-8 KDZA 29-23 KREM a WLEE 27-25

R

HELEN REDDY—3:29 *Angie Baby (Capitol)*

LP: Free And Easy

P1	P2	P3
KHJ 6-6 K100 4-6 KFRC 10-9 WABC 11-13 99X 18-16 WFIL 6-5 KSTP d 16 13Q 7-6 WPEZ 20-15 KQV 9-6 WRKO 7-7 WQXI 4-4 WLS 7-4 WPGC 10-7	WSAI 5-4 WAYS 14-14 WYRE 8-6 WAVZ 5-5 WNGD 6-6 WYND 8-3 KAKC 6-3 KTKT 14-12 KEZY 13-10 WGRD 14-9 KUPD 7 Y100 4-4 WIFE 8-5 WRIE 8-6 WVOV 3-2 WOW 9-11 WHBQ 11-15 WNOE 19-15 WSGA 4-4 WBBF 25-15 KRSP 14-12 WGRQ 15-9 KYNO 19-16 WKBW 18-10 WNOR 5-4	WCFL 12-8 WMAK 5-3 KQWB 8-5 KJR 4-2 KING 7-4 KAFY 5-5 WISM 8-6 WGH 3-3 WAKY 10-1 WKLO 7-2 KEEL 10-8 WPOP 21-19 WLP 8-4 WFOM 11-5 WBBQ 17-14 CHUM d 23 WROK 9-6 WYSL 15-14 KYSN 8-4 WBG 19-9 KDON 16-11 KJOY 15-13 WROV 8-5 WRFC 8-6 WEEO 4-1 KDZA 7-5 WORD 8-11 WLEE 13-6

RUFUS—2:54 *You Got The Love (ABC)*

LP: Rags To Rufus

P1	P2	P3
KHJ 28-21 KFRC 29-25 WABC 23-20 99X 8-12 WFIL d 23 WRKO 27-20 WQXI 7-5 WPGC 19-28	WAYS 7-8 WYRE 15-15 WAVZ 23-19 WYND a 26 KAKC d 28 KTKT 9-10 WHBQ 14-11 WNOE 6-10 WSGA 25-22 WKBW 30-28 WNOR 17-17	WCFL a 28 KQWB a 41 KJR on KAFY 25-25 WISM d 30 WGH 14-10 WAKY 21-17 WKLO a 28 WPOP a WLPL 3-7 WFOM 14-13 WROK on WYSL d 30 KYSN 26-25 WBG 19-9 KDON 32-24 KJOY d 30 WRFC 12-9 WEEO 16-9 KDZA 35-30 WORD 18-13 KREM a WLEE 23-9

BILLY SWAN—2:57 *I Can Help (Monument)*

LP: I Can Help

P1	P2	P3
KHJ 2-3 K100 3-3 KFRC 2-1 WABC 12-7 99X 9-7 WFIL 3-1 KSTP 3-3 13Q 9-9 WPEZ 15-14 KQV 6-11 WRKO 6-4 WQXI 1-1 WLS 15-5 WPGC 1-1	WSAI 4-7 WAYS 2-4 WYRE 2-2 WAVZ 10-8 WNGD 1-1 WYND 6-12 KAKC 2-4 KTKT 2-3 KEZY 4-6 WGRD 5-2 Y100 3-7 WIFE 10-16 WRIE 1-4 WVOV 1-1 WOW 1-2 WHBQ 2-3 WNOE 2-3 WSGA 2-2 WBBF 3-2 WGRQ 3-3 KYNO 7-9 WKBW 3-3 KTLK 2-3 WNOR 1-1	WCFL 10-5 WMAK 9-9 KQWB 1-1 KJR 1-3 KING 1-1 KAFY 2-2 WISM 1-2 WGH 1-6 WAKY 3-6 WKLO 2-3 KEEL 2-5 WPOP 8-4 WFOM 1-1 WBBQ 5-17 CHUM 5-4 WROK 2-4 WYSL 3-3 KYSN 2-1 WBG 4-4 KDON 2-2 KJOY 2-1 WROV 4-10 WRFC 2-11 WEEO 1-6 KDZA 2-2 WORD 2-3 WLEE 1-7

BOBBY VINTON—3:08 *Melody Of Love (ABC)*

LP: Melodies Of Love

P1	P2	P3
KHJ 7-19 K100 7-8 KFRC 12-11 WABC 1-1 99X 5-9 WFIL 1-2 KSTP 8-8 13Q 19-24 WPEZ 9-9 WRKO 4-6 WLS 3-7 WPGC 16-18	WSAI 8-8 WYRE 4-8 WAVZ 1-2 WNGD 4-8 WYND 24-23 KAKC 14-11 KEZY 1-2 WGRD 6-6 Y100 8-9 WIFE 13-9 WRIE 4-5 WCV 2-1 WHBQ 18-27 WNOE 14-14 WSGA 10-10 WBBF 7-7 KRSP 9-15 KYNO 4-7 WKBW 9-15 WNOR 11-8	WCFL 1-3 KJR 7-21 KING 4-8 KAFY 6-3 WISM 7-9 WGH 10-7 WPOP 1-2 WLPL 10-2 CHUM 1-2 WROK 5-5 WYSL 17-26 KJOY 17-22 WEEO 11-23 KDZA 10-10 WLEE 8-13

S

NEIL SEDAKA—2:50 *Laughter In The Rain (Rocket)*

LP: Sedaka's Back

P1	P2	P3
KHJ 29-18 K100 13-13 KFRC 6-5 WABC 47-32 99X a 17 WFIL 26-20 WYND 18-7 13Q 29-28 KQV 23-21 WRKO 14-10 WQXI 27-26 WPGC 14-12	WSAI 18-9 WAYS 25-19 WYRE a 26 WAVZ 21-16 WNGD 23-18 XROK a WYND 4-5 KAKC 15-8 KTKT 23-18 KEZY on WGRD 4-4 KUPD 17 Y100 a 25 WIFE 22-11 WRIE 19-12 WVOV 20-15 WOW 11-7 WNOE d 21 WSGA 17-12 KYSN 24-18 KDON 13-6 KJOY 8-6 WROV 18-13 WMC FM a WRFC 26-19 WEEO 15-14 KDZA 21-9 WLEE 21-12	WCFL 33-29 WMAK 16-17 KQWB 14-10 KJR 5-5 KING 11-7 KAFY 23-17 WISM d 25 WGH 34-31 WAKY 29-27 WKLO 31-30 KEEL 6-2 WPOP 14-6 WLPL 9-8 WFOM 22-18 WBBQ 23-21 CHUM d 26 WROK 29-27 WYSL 24-21 KYSN 24-18 KDON 13-6 KJOY 8-6 WROV 18-13 WMC FM a WRFC 26-19 WEEO 15-14 KDZA 21-9 WLEE 21-12

T

THREE DEGREES—2:58 *When Will I See You (Phy/Int)*

LP: Three Degrees

P1	P2	P3
KHJ 1-1 K100 1-2 KFRC 3-2 WABC 2-2 99X 1-1 WFIL 5-8 KSTP 5-4 13Q 6-7 WPGC 7-8 KQV 4-10 WRKO 2-3 WQXI 3-3 WLS 12-3 WPGC 6-8	WSAI 2-2 WAYS 3-9 WYRE 3-3 WAVZ 3-7 WNGD 3-3 WYND 2-2 KAKC 10-17 KTKT 4-2 KEZY 2-3 WGRD 3-7 KUPD 3 Y100 2-1 WIFE 2-4 WRIE 3-2 WVOV 2-4 WOW 7-5 WHBQ 8-9 WNOE 8-6 WSGA 1-1 WBBF 2-3 KRSP 5-7 WGRQ 4-4 KYNO 1-5 WKBW 2-2 KTLK 1-1 WNOR 4-5	WCFL 22-11 WMAK 3-2 KQWB 4-2 KJR 2-4 KING 2-2 KAFY 3-4 WISM 3-3 WGH 12-17 WAKY 1-2 WKLO 1-1 KEEL 3-1 WPOP 4-3 WLPL 2-6 WFOM 8-8 WBBQ 8-27 CHUM 3-3 WROK 3-2 WYSL 1-4 KYSN 7-9 WBG 2-2 KDON 7-9 WROV 1-6 WRFC 4-3 WEEO 3-11 KDZA 3-3 WORD 5-6 WLEE 3-2

BARRY WHITE—3:25 *You're The First, Last (20th)*

LP: Can't Get Enough

P1	P2	P3
KHJ 17-12 K100 19-10 KFRC 22-13 WABC 3-4 99X 3-3 WFIL 8-7 KSTP 19-19 13Q 28-25 KQV 15-15 WRKO 19-16 WQXI 12-8 WPGC 15-13	WSAI 7-6 WAYS 15-10 WYRE 17-12 WAVZ 8-3 WNGD 11-7 KAKC 28-27 KTKT 15-9 KEZY d 18 WGRD 27-16 KUPD 18 Y100 9-6 WIFE d 30 WRIE 30-29 WVOV 4-17 WOW 19-14 WHBQ 29-25 WNOE 7-4 WSGA 13-11 KRSP 22-19 WGRQ 22-19 KYNO 5-1 KTLK 23-13 WNOR 18-10	WCFL 28-15 WMAK 24-16 KQWB 26-23 KJR d 29 KING on KAFY 18-9 WISM 13-12 WGH 16-8 WAKY 8-8 WKLO 8-4 KEEL 8-6 WPOP 5-5 WLPL 18-14 WFOM 26-21 WBBQ 20-13 CHUM 27-17 WROK 31-28 WYSL 19-8 KYSN 38-35 WBG 10-5 KDON 20-10 WROV 24-19 WRFC d 28 WEEO 26-19 KDZA 19-16 WORD 22-14 WLEE 19-5

RIGHTEOUS BROTHERS—2:58 *Dream On (Haven)*

LP: Give It To The People

P1	P2	P3
KSTP a WPGC 29-23	WYRE d 30 WRIE 26-26 WOW d 20 KYNO a KTLK d 38	WMAK 30-26 KQWB 32-27 KJR d 28 KING on WGH 36-33 WAKY on KEEL 17-16 WLPL a WFOM 30-26 WBBQ on KYSN 15-12 WBG on WROV on WRFC 29-26 WEEO 40-35 KDZA a 37 WORD 20-23 KREM a

ROLLING STONES—3:29 *Ain't Too Proud To Beg (RS)*

LP: It's Only Rock 'N Roll

P1	P2	P3
KHJ 16-22 K100 23-24 WABC 48-31 WFIL 20-19 WPGC 17-15	WYRE 19-17 WNGD 24-23 WYND 22-25 KTKT 21-26 WGRD 22-28 KUPD 12 WIFE 5-8 WVOV 6-13 WSGA 8-8 KRSP 25-26 WGRQ 21-20 KYNO 15-10 KTLK 19-17 WNOR 26-25	WCFL 29-26 KQWB 30-28 KJR 20-24 KING on KAFY 16-13 WGH 32-26 WKLO 23-22 WPOP 19-21 WLPL 23-19 WFOM 27-24 WBBQ 27-23 CHUM on WROK 24-24 WYSL 27-25 KYSN 27-26 WBG on KDON 22-21 WROV 19-17 WRFC 17-15 WEEO 24-21 KDZA 14-12 WORD on WLEE 30-19

RINGO STARR—3:16 *Only You (Apple)*

LP: Goodnight Vienna

P1	P2	P3
KHJ 18-15 K100 12-12 WFIL 24-17 KSTP 13-21 KQV d 22 WRKO 29-21 WQXI 17-15 WPGC d 30	WSAI 12-10 WAYS 23-21 WYRE 20-18 WAVZ 29-26 WNGD 21-12 WYND 25-22 KAKC 21-15 KTKT 18-15 KEZY on WGRD d 23 KUPD 13 Y100 20-12 WIFE 30-19 WRIE 28-27 WVOV d 10 WOW a WHBQ d 26 WNOE d 22 WSGA 15-13 KRSP 18-16 WGRQ 27-22 KYNO 17-11 KTLK 18-9 WNOR 23-23	WCFL a 31 WMAK 23-18 KQWB 21-15 KJR 18-6 KING 20-17 KAFY 22-19 WISM 22-16 WGH 26-18 WAKY 13-11 WKLO 35-33 KEEL 25-19 WPOP 20-20 WLPL 21-20 WFOM 24-16 WBBQ 18-7 CHUM on WROK 32-29 WYSL on KYSN 21-19 WBG 22-18 KDON 28-27 WROV 17-15 WRFC 22-17 WEEO 16-10 KDZA 30-24 WORD d 21 WLEE d 10

THREE DOG NIGHT—3:32 *Play Something Sweet (ABC/Dunhill)*

LP: Hard Labor

P1	P2	P3
	KAKC 23-20 WVOV on	WCFL 24-22 WMAK 29-25 WBBQ 22-12 KYSN 10-13

STEVIE WONDER—4:05 *Reggae Woman (Tamla)*

LP: Fulfillingness' First Finale

P1	P2	P3
KHJ 21-16 K100 22-14 KFRC a 27 99X 11-10 KSTP 23-23 13Q 23-20 KQV 16-12 WQXI 28-22 WPGC 23-17	WAYS 9-5 WYRE a 27 WAVZ a WNGD d 29 KTKT a 28 KEZY d 20 KUPD 26 WNOE 1-2 WSGA 20-16 WGRQ 19-16 KYNO d 28 KTLK 22-14 WNOR 30-21	WMAK a KJR 21-16 KING on KAFY a WISM 19-15 WGH 22-13 WAKY 26-26 WKLO 9-11 KEEL 12-11 WPOP on WLPL 16-15 WFOM 32-27 WBBQ on CHUM on WROK d 34 WYSL 11-11 KYSN 19-15 WBG on KDON 29-15 KJOY 16-19 WROV 29-18 WMC FM a WRFC 21-18 WEEO 29-25 KDZA 32-27 WORD 10-10 WLEE 26-17

PARALLEL 1

KHJ LOS ANGELES
K100 LOS ANGELES
KFRC LOS ANGELES
WABC SAN FRANCISCO
99X NEW YORK
WPIX NEW YORK
WFIL PHILADELPHIA
KQWB ST PAUL MINN
KSTP MINNEAPOLIS
13Q PITTSBURGH
WPEZ PITTSBURGH
KQV PITTSBURGH
KTLK DETROIT WINDSOR
WROV DETROIT
KTLK DALLAS
WRKO BOSTON
WQXI ATLANTA
99X ATLANTA
WLS ATLANTA
WRO WASHINGTON D.C.
KSLD ST LOUIS
WPGC WASHINGTON D.C.

PARALLEL 2

WSAI CINCINNATI
WAYS CHARLOTTE
WYRE MILWAUKEE
WYRE ANNAPOLIS
WAVZ NEW HAVEN
WNGD PROVIDENCE
RFD KANSAS CITY
KQV EL PASO
KQV SACRAMENTO
KQV SAN JOSE
WYND SARASOTA
KAKC TULSA
KTKT TUCSON
KTKT ANAHEIM
WROV GRAND RAPIDS
KQV DES MOINES
KQV WICHITA
KQV PHOENIX
KQV PHOENIX
KQV SAN DIEGO
KQV MIAMI
KQV MIAMI
WYRE INDIANAPOLIS

PARALLEL 3

WCFL CHICAGO
WMAK NASHVILLE
WCOL COLUMBUS
WNCI COLUMBUS
KQWB FARGO
KJR SEATTLE
KJRR SPOKANE
WCAO BALTIMORE
KING SEATTLE
KAFY BAKERSFIELD
WISM MADISON
WGH NEWPORT NEWS
WAKY LOUISVILLE
KQV LOUISVILLE
KEEL SHREVEPORT
WPOP HARTFORD
WIXY CLEVELAND
WJDX JACKSON
WLPL BALTIMORE
WFOM MARIETTA
WBBQ AUGUSTA
WRC BIRMINGHAM
CHUM TORONTO
WAMS WILMINGTON
WROK ROCKFORD

KJMN DENVER
KYSN COLORADO SPRINGS
WGBN BOWLING GREEN
KDON SALINAS
KJLS RAPID CITY
WONZ NATCHEZ
KKAM PUEBLO
WHYY MONTGOMERY
KJOY STOCKTON
WROV FARGO
WMC FM MEMPHIS
WKNV KNOXVILLE
WVLR LEXINGTON
WRSY MONTGOMERY
KFXM SAN BERNARDINO
WEEO WAYNESBORO
KDZA PUEBLO
KXXL GRAND FORKS
WKSJ JAMESTOWN
WORD SPARTANBURG
KJSD SAN JOSE
KREM SPOKANE
99X GRAND RAPIDS
WLEE RICHMOND
KSLY SAN LUIS OBISPO

THE HOTTEST:
ELTON JOHN
NEIL SEDAKA
BARRY WHITE
RINGO STARR
MCCARTNEY/WINGS

added this week...

Most added
EAGLES
MANILOW
GLORIA GAYNOR
GRAND FUNK
ANKA/COATES

PARALLEL 1

13Q/PITTSBURGH
Terry Hazlett

Gino Vannelli
HOT
Styx 16-13
Barry Manilow 20-14
Kiki Dee 21-16

WPGC/WASHINGTON D.C.
Harv Moore

None
HOT
Stevie Wonder 23-17
Righteous Bros. 29-23
Jethro Tull 31-24

KSTP/MINNEAPOLIS
Chuck Knapp

Gloria Gaynor
Righteous Bros
Barry Manilow
HOT
Elton John 29-6
Neil Sedaka 18-7
Paul McCartney 24-12

WPEZ/PITTSBURGH
Buzz Brindle

Kiki Dee
Barry Manilow
HOT
Jethro Tull 13-7
Elton John 22-10
Doobie Bros 24-17

WFIL/PHILADELPHIA
Joel Denver

None
HOT
Harry Chapin 10-4
Paul McCartney 21-14
Elton John 23-16

WABC/NEW YORK
Rick Sklar
Disco-Tex
HOT
Harry Chapin 13-8
Paul McCartney 21-14
Elton John 25-15

WQXI/ATLANTA
John Leader

Mac Davis
Candi Staton
Grand Funk
HOT
Elton John 18-10
Elvis Presley 23-17

KQV/PITTSBURGH
Claudia Jarvis

George Harrison (nite)
J. Geils (nite)
Roy Rogers (day)
John Denver (day)
HOT
Elton John 14-5
Gino Vannelli 18-7
Styx 22-13

K100/LOS ANGELES
Nancy Trabish

Barry Manilow
HOT
Harry Chapin 11-4
Barry White 19-10
Elton John 24-11

WLS/CHICAGO
Jim Smith

Carpenters
Styx
Anka/Coates
HOT
Three Degrees 12-3
Billy Swan 15-5
Elton John 30-12

KHJ/LOS ANGELES
Mardi Nehrass

Donny & Marie Osmond
Carol Douglas
Average White Band
Barry Manilow
Gladys Knight & Pips
HOT
Elton John 20-9
Neil Sedaka 29-18
Rufus 28-21

99X/NEW YORK
Mardi Nehrass

Stevie Wonder
Carol Douglas
HOT
Harry Chapin 15-10
Barry White 22-13
Elton John 27-15

WRKO/BOSTON
Mardi Nehrass

Linda Ronstadt
Average White Band
Donny & Marie Osmond
Anka/Coates
HOT
Elton John 22-13
Carol Douglas 20-14
Ringo Starr 29-21

PARALLEL 2

WYRE/ANNAPOLIS
Ed Gursky

Neil Sedaka
Stevie Wonder
Grand Funk
Eagles
HOT
Harry Chapin 9-4
Barry Manilow 22-11
Elton John 29-20

WJBO/PORTLAND
Charlie Lake

Grand Funk
Doobie Bros
Gloria Gaynor
HOT
Elton John 24-11
Carpenters 25-13

KTKT/TUCSON
Ed Alexander

Stevie Wonder
Eagles
Grand Funk
HOT
Jethro Tull 10-5
Barry White 15-9
Al Green 19-13

KEZY/ANAHEIM
Jack Alexander

Not Available
HOT
Harry Chapin 9-1
Elton John 14-7

WGRO/BUFFALO
Roger Christian

Disco-Tex
Peter Shelley
Eagles
HOT
Paul McCartney 11-5
Neil Sedaka 13-7
Elton John 20-10

Y100/MIAMI
John Hartman

Al Green
Neil Sedaka
HOT
Elton John 12-3
Ringo Starr 20-12
Carpenters 21-16

WVOV/HUNTSVILLE
Stew Robb

Guess Who
Andy Kim
Carlie Ross (Big Tree)
HOT
HOT
Carl Douglas 13-3
Elton John 16-6
Carpenters 18-9

WBBF/ROCHESTER
Cary Pall

Neil Sedaka
Paul McCartney "Sally G"
Kiki Dee (re-add)
HOT
Elton John 13-6
Jethro Tull 12-8
Helen Reddy 25-15

PARALLEL 3

KUPD/PHOENIX
Randy Lane

ELO
Grand Funk
Eagles
Gloria Gaynor
David Bowie
Anka/Coates

WWSA/CINCINNATI
Robin Mitchell

Barry Manilow
HOT
Neil Sedaka 18-9
Gloria Gaynor 23-16

KYNO/FRESNO
Joan Sclerer

Righteous Bros.
Guess Who
HOT
Rolling Stones 15-10
Ringo Starr 17-11

KTLK/DENVER
Dennis Constantine

America
Fanny
HOT
Elton John (both sides) 20-8
Ringo Starr 18-9
Barry White 23-13
Barry Manilow 25-15

KRSP/SALT LAKE CITY
Alan Hague

Doobie Bros
Jim Stafford
HOT
Neil Diamond 11-6
Elton John 28-18

KAKC/TULSA
Mardi Nehrass

Carol Douglas
Nigel Olsson
HOT
Pointer Sisters 13-7
Neil Sedaka 15-8
Jim Weatherly 17-12

WHBQ/MEMPHIS
Mardi Nehrass

Not Available
HOT
Paul McCartney 15-4
Gladys Knight & Pips 17-7
Barry Manilow 21-13

WAVZ/NEW HAVEN
Mardi Nehrass

Carol Douglas
Stevie Wonder
Average White Band
Donny & Marie Osmond
HOT
HOT
Barry White 8-3

XROK/EL PASO
John Long

Neil Sedaka
Kiki Dee
Paul Davis

WLOB/PORTLAND
Paul Davis

PARALLEL 2

WOW/OMAHA
Tom Barsanti

Ringo Starr
Carpenters
HOT
Paul McCartney 15-10
Elton John 20-15

WNOR/NORFOLK
Paul Todd

George Harrison
Anka/Coates
Barry Manilow
HOT
Barry White 18-10
Elton John 24-12
Stevie Wonder 30-21

WGNG/PROVIDENCE
Brad Pierce

Pointer Sisters
Donny & Marie Osmond
Al Green
HOT
B.T. Express 16-10
Ringo Starr 21-12
Elton (both sides) 25-16
Neil Sedaka 23-18

WWSA/CINCINNATI
Robin Mitchell

Barry Manilow
HOT
Neil Sedaka 18-9
Gloria Gaynor 23-16

KYNO/FRESNO
Joan Sclerer

Righteous Bros.
Guess Who
HOT
Rolling Stones 15-10
Ringo Starr 17-11

KTLK/DENVER
Dennis Constantine

America
Fanny
HOT
Elton John (both sides) 20-8
Ringo Starr 18-9
Barry White 23-13
Barry Manilow 25-15

KRSP/SALT LAKE CITY
Alan Hague

Doobie Bros
Jim Stafford
HOT
Neil Diamond 11-6
Elton John 28-18

KAKC/TULSA
Mardi Nehrass

Carol Douglas
Nigel Olsson
HOT
Pointer Sisters 13-7
Neil Sedaka 15-8
Jim Weatherly 17-12

WHBQ/MEMPHIS
Mardi Nehrass

Not Available
HOT
Paul McCartney 15-4
Gladys Knight & Pips 17-7
Barry Manilow 21-13

WAVZ/NEW HAVEN
Mardi Nehrass

Carol Douglas
Stevie Wonder
Average White Band
Donny & Marie Osmond
HOT
HOT
Barry White 8-3

XROK/EL PASO
John Long

Neil Sedaka
Kiki Dee
Paul Davis

WLOB/PORTLAND
Paul Davis

PARALLEL 3

WGH/NORFOLK
George Crawford

Paul Davis
Gloria Gaynor
George Harrison
HOT
Paul McCartney 18-9
Stevie Wonder 22-13
Ringo Starr 26-18
Eric Clapton 27-19

KREM/SPOKANE
Rob Glendinning

Elvis Presley
Righteous Bros
Mac Davis
Rufus
Grand Funk
Splinter
HOT
Barry Manilow 19-14
Carpenters debut 17

KEEL/SHREVEPORT
Mike Steele

Carol Douglas
Average White Band
America
Splinter
Sweet Sensations
Sugarloaf (nite)
HOT
Barry Manilow 15-10
Ringo Starr 25-19

KJR/SEATTLE
Garry Shannon

Michael Holm
HOT
Ringo Starr 18-6
Carpenters 22-7
Elvis Presley 23-14
Barry Manilow 25-15

WLEE/RICHMOND
Bob Paiva

Barry Manilow
Stylistics
Billy Preston
HOT
Barry White 19-5
Paul McCartney 29-8
Rufus 23-9
Neil Sedaka 21-12

WORD/SPARTANBURG
Ron Brandon

Doobie Bros
America
Miracles
Mac Davis
Michael Holm
Ruby Winters
HOT
Latimore 12-5
Barry White 22-14
Percy Sledge 24-15

KAFY/BAKERSFIELD
Mark Daniels

J Denver "Rock Mtn. Suite"
Paul Davis
Stevie Wonder
Barry Manilow
HOT
Paul McCartney 15-8
Barry White 18-9
Neil Sedaka 23-17
Carpenters 29-21

WLPL/BALTIMORE
Jerry St. James

Frankie Valli
The Who
Cat Stevens
Righteous Bros
Anka/Coates
California Music
HOT
Barry Manilow 13-5
Jethro Tull 24-13
George Harrison 22-16
Elton John 29-18

WPOP/HARTFORD
Dick Springfield

Rufus
Paul Davis (nite)
Maria Muldaur
"I'm A Woman" (nite)

WMC-FM/MEMPHIS
Clarence James

Neil Sedaka
Stevie Wonder
J. Geils
Paul Davis
Cat Stevens
HOT
Barry Manilow 10-5
Rolling Stones 21-12
Harry Chapin 22-16

WROK/ROCKFORD

Carpenters
Eagles
Elvis Presley
J. Geils
HOT
Hudson Bros 21-16
Elton John 26-20

KING/SEATTLE
Rick Donovan

Jethro Tull
HOT
McCartney "Sally G" 15-10
Elton John debut 15

KKAM/PUEBLO
Paul Ehlig

Gloria Gaynor
Eagles
HOT
Neil Sedaka 15-11
Sugarloaf 17-13
Barry Manilow 19-14
Carpenters 26-20

WRFC/ATHENS
Randy Reeves

Eagles
Disco-Tex
Grand Funk
HOT
Shirley Brown 10-5
Elvis Presley 14-8
Rufus 16-9

WKLO/LOUISVILLE
Gary Majors

Rufus
Barry Manilow
ELO
HOT
Lynyrd Skynyrd 21-9
Elton John 34-10
Telly Savalas 27-17

WBGW/BOWLING GREEN
Dana Green

Telly Savalas
Grand Funk
America
Rufus
HOT
Lynyrd Skynyrd 7-3
Helen Reddy 19-9

WAKY/LOUISVILLE
John Randolph

Linda Ronstadt
Barry Manilow
Anka/Coates
Disco-Tex
Eagles
Barbara Mason
HOT
Helen Reddy 10-1
Elton John 28-14

WMAK/NASHVILLE
Mark Damon

Stevie Wonder
Mac Davis
Kiki Dee
HOT
Shirley Brown 19-14
Barry White 24-16

KQWB/FARGO
Wayne Hiller
Gloria Gaynor
Doobie Bros
David Bowie
Linda Ronstadt
Rufus
HOT
Fancy 12-6
Billy Joel 25-17
ELO 29-19

KJOY/STOCKTON
David Krahm

Carol Douglas
Billy Joel
Eagles "Old '55"
Styx
HOT
Elton John 19-12
Gloria Gaynor 29-14

WISM/MADISON
David Ross

Mac Davis
Barry Manilow
HOT
Ringo Starr 22-16
Elton John 26-18
Paul Davis 24-19

Z96/GRAND RAPIDS
Lee DeYoung

Barry Manilow
Gloria Gaynor
HOT
Barry White 28-15
Carpenters 25-17
Ringo Starr 26-18

WFOM/MARIETTA
Jim Davenport

Grand Funk
HOT
Elvis Presley 9-4
Helen Reddy 11-5
Paul McCartney 18-11
Ringo Starr 24-16

WROV/ROANOKE
Chuck Holloway

Grand Funk
Mac Davis
Linda Ronstadt
Paul McCartney "Sally G"
Styx
HOT
Elton John 21-12
Lynyrd Skynyrd 20-16
Stevie Wonder 29-18
Barry White 24-19

KYSN/COLORADO SPRINGS
Gene Curtis

Anne Murray
Anka/Coates
Raspberries
David Bowie
Linda Ronstadt
Gloria Gaynor
HOT
Helen Reddy 8-4
Paul Davis 16-11
Carpenters 28-20

WCFL/CHICAGO

Rufus
Ringo Starr
Eagles
Michael Holm
HOT
Billy Swan 10-5
B.T. Express 14-9
Three Degrees 22-11
Elton John 31-12
Barry White 28-15

WEEO/WAYNESBORO
Mike Raub

Mac Davis
Don McLean
Love Unltd.
BTO
HOT
B.T. Express 14-8
Ringo Starr 16-10
Lynyrd Skynyrd 22-16
Barry White 26-19

CHUM/TORONTO
Nancy Krant

B.T. Express
Gloria Gaynor
Moxy
Al Green
HOT
Carl Douglas 9-1
Chicago 22-15
Barry White 27-17

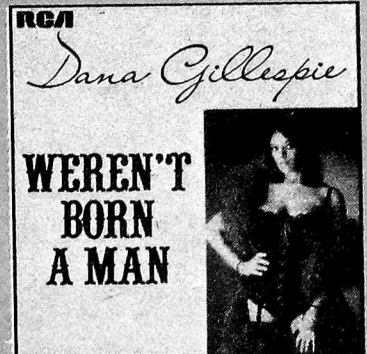
NOTE: Due to the Gavin schedule many of the attending PD's were not able to report this week. We have 75 percent of our normal stations reporting so please understand that some station action will be missing.

DANA GILLESPIE

AIN'T GONNA PLAY NO SECOND FIDDLE



Soon
to make her
first live U.S.
appearances



RCA Records and Tapes

RECORDS

RECORD INDUSTRY NOTES



by Candy Tusken

The night before the Stevie Wonder concert in Seattle last week saw a crowd standing in line two blocks long waiting to buy tickets for the next night's concert. Wonder's concert promoter, Dick Griffay, called to tell me that some intrepid young man picked the box office door lock to gain entrance during the night. The broken lock was discovered the next morning along with the sleepy fan. A quick check proved nothing was stolen and the would-be prowler explained that he simply wanted to be the first in line to buy his Wonder tickets!

MC LEAN'S MUMMY GETS BURIAL

Don McLean (of "American Pie" fame) wrote a song last year about a pegleg hobo named Andrew McCrew who in attempting to hop a train in 1913, slipped and severed his other leg and consequently died. He was promptly embalmed and mummified to await retrieval by his relatives. He was never claimed and a traveling carnival collected him for exhibition labeling him as "the eighth wonder of the world." For forty years Andrew toured the country until the carnival went bankrupt. He was purchased by a widow in Dallas who stored him in her basement. Notoriety and local press coverage sprung up when the widow's neighbors heard of her downstairs boarder. Along with the assistance of a sympathetic Funeral Parlor owner the widow laid the hobo to rest sixty years after his death. McLean heard of the incident and wrote a song called "The Legend Of Andrew McCrew." After Chicago airplay on station WGN, the listener response was so great that Roy Leonard of the station called the widow and interviewed her and Don McLean regarding the history of the "mummy." Resulting press spurred Bob Williams of Chicago's Jensen Corporation to donate a headstone marking McCrew's grave. The inscription on the stone bears the verse of McLean's song, part of which read "A man who found more life in death than life gave him at birth." A small memorial service was held in conjunction with the headstone installation for the long dead "king of the road" this Thanksgiving in Dallas.

LATIN "DISH" SCORES WITH FIRST FAMILY

Vikki Carr is becoming a familiar face at the White House these days. She was recently asked to attend a state dance by President Ford himself via phone. While she and the President were dancing, Vikki asked him what his favorite Spanish dish was. He quickly replied "you." She was also in appearance at the White House ceremonies for the Lung Association Drive. She showed up with a specially made T-shirt for Ford's daughter, Susan, which read "Made Especially For Susan Ford's Blue Jeans" on the back; the front was emblazoned "One Hell Of A Woman." After the ceremonies the President led Vikki into his private offices for a 15-minute chat... The whole family is evidently into the music scene as Ford's oldest son was spotted at the George Harrison concert in Washington posing for pictures with George and sporting a Capitol "Unicorn" promotion sweat shirt...

FRANKIE'S FRIEND CAUGHT IN THE ACT

Fred Giovanelli, who has been rumored to be with the Brooklyn mafia, was subpoenaed last summer by a New York Grand Jury regarding information on organized crime. The alleged mobster has been putting off his appearance before the court stating a home accident had incapacitated him. To make his point he finally showed up in court limping visibly and wearing a neck brace. He looked convincingly ill and his attorney pronounced him too sick to testify. A later letter by the attorney informed the court that his client was even too ill to leave his home. The letter was dated October 15th. However, an Assistant District Attorney was leafing through the entertainment section of a New York paper and spotted a familiar face in a picture of the audience who attended Frank Sinatra's Madison Square Garden Concert. Right there in the front row was the sick Fred Giovanelli applauding and having a great time with the neck brace in conspicuous absence. Unfortunately the date of the concert was October 14th...

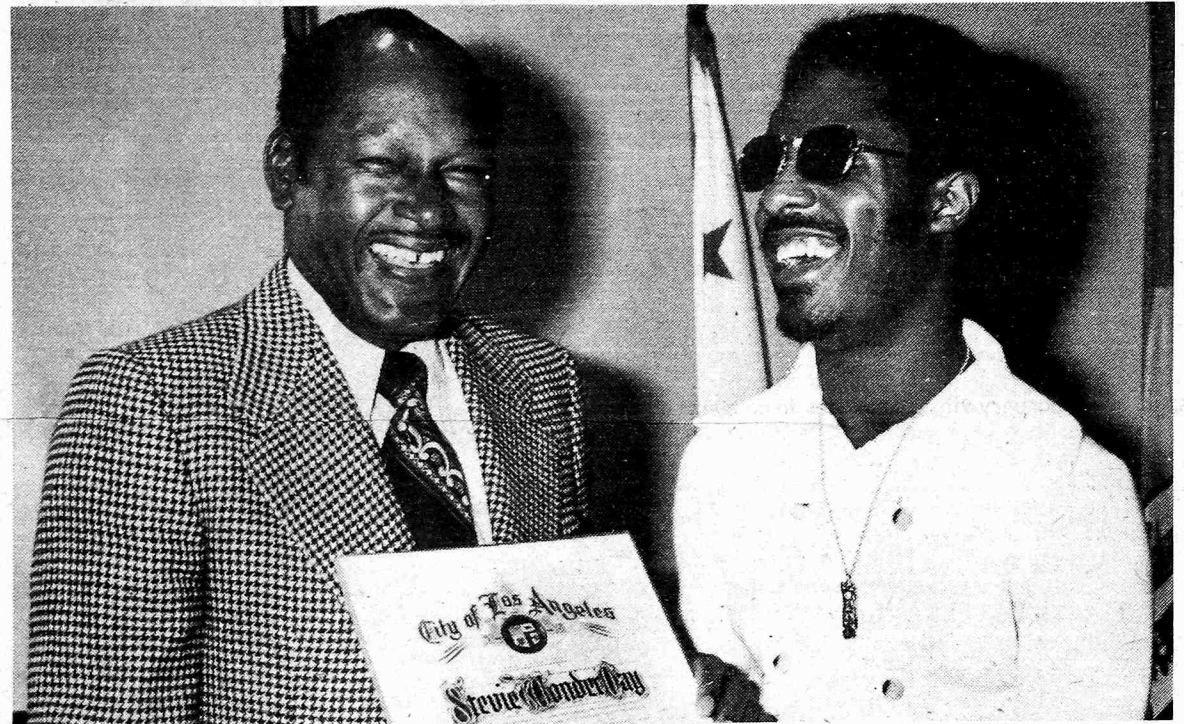
WEXLER'S DREAM A REALITY

For the past twenty years Jerry Wexler of Atlantic Records has been attempting to secure the rights to Kahlil Gibran's "The Prophet" for recording purposes. According to Wexler "The Prophet" has been a personal pet of mine for 20 years and we finally had the good fortune to obtain exclusive rights after a great deal of effort." The book, which is a collection of pithy philosophies of life, was originally published in 1923 and has been reprinted ninety-two times. It has been printed in twenty languages and sold over four million hard cover copies in the U.S. alone. Atlantic is rush releasing the album for Christmas which features Richard Harris as the narrator with the music being composed, arranged and conducted by Arif Mardin... Enterprise recording artist O.B. McClinton was lately seen riding around in a police car in his home town of Senatobia, Mississippi. It seems that O.B. had locked his keys in the car when a helpful policeman stopped to assist. As the flustered officer was attempting to get O.B.'s car door open, he discovered that he too had locked his own keys in the patrol car! They finally managed to get into the police car and O.B. was whisked away to receive the keys to

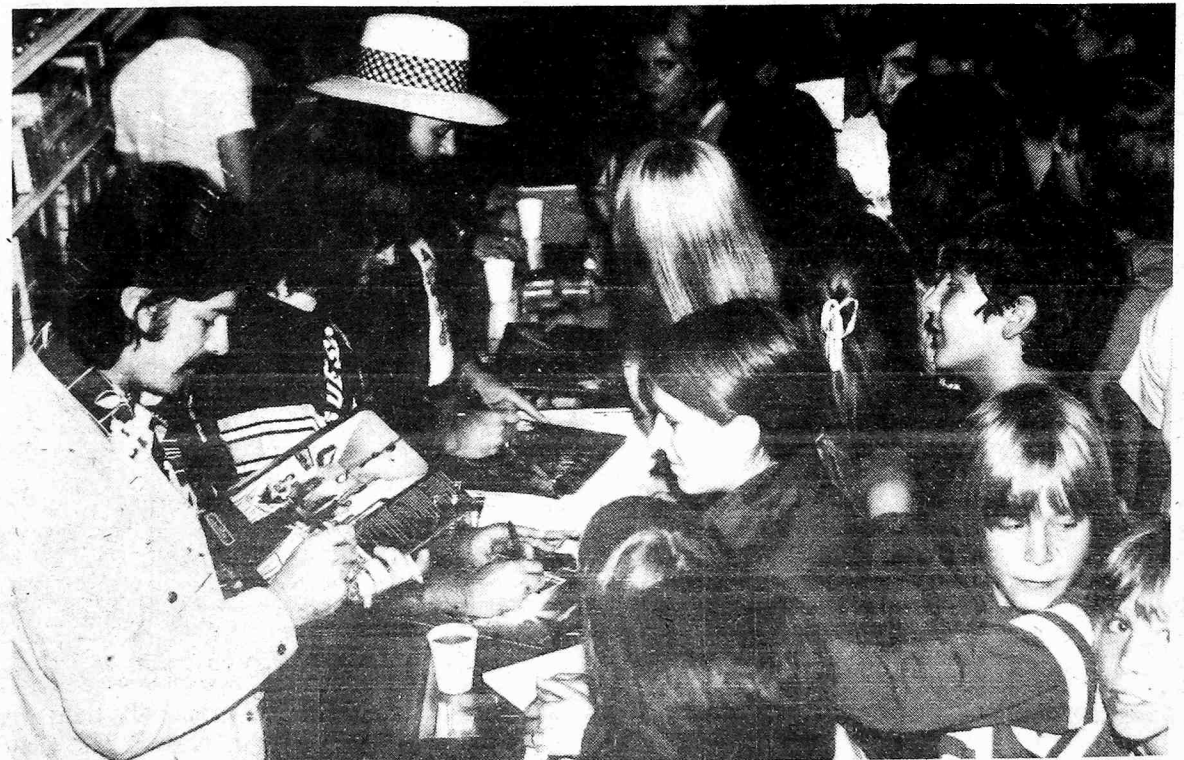
Continued on page 15



Arista President, Clive Davis, chats with Columbia recording artist, Paul Simon at a party last week in New York thrown to kick off the publication of Davis' new book "Clive: Inside The Record Business." Rock artists in attendance included Edgar Winter, Odetta, Rick Derringer, Elliot Murphy and Broadway star Marlo Thomas plus industry notables Jerry Wexler, Don Kirshner and Shep Gordon.



On November 22nd Mayor Tom Bradley declared Stevie Wonder Day in Los Angeles. Stevie met with Mayor Bradley at his offices where he received a proclamation for his work in the community. This preceded his sell-out concert at the Forum.



Guess who journeyed way up to Anchorage, Alaska, for a little concerting and in-store appearance? that's right, none other than RCA Recording artists, the GUESS WHO, Seen here, they are autographing their albums for the Alaskans at the Pay & Save store in Anchorage.

RECORDS

RECORD INDUSTRY NOTES



Continued from page 14

the city as presented by the Mayor. That day just happened to be the first annual O.B. McClinton Day in Senatobia...

T. V. TALK

Some good television shows to watch for are airing this month with David Bowie joining Dick Cavett in the artist's first American Talk Show debut on December 5th... Harry Nilsson's animated cartoon musical "The Point" is scheduled for December 7th. I caught the show when it was first released in 1971 and it is a must see. It is a delight both visually and musically. The theme of the cartoon is a song called "Me And My Arrow" which received national chart recognition in '71... Speaking of Harry Nilsson, he was in Los Angeles not too long ago partying it up with some friends including a well known independent promotion man. Harry was feeling no pain at the end of the evening and told his friends that he wanted to make their gathering a regular thing. He invited them all to dinner the following week at the same restaurant. Everyone involved felt Harry was in a nice "glow" and didn't really take him seriously. The promotion man received a call in the middle of the night the following week. It was Harry asking why he hadn't shown up for dinner? Said the astonished promotion man "I was amazed that he had remembered and I still can't figure out how he got my phone number?" Harry evidently means what he says!

ROCK GROUP GETS THUMBS DOWN FROM UNCLE SAM

The new Brownsville Station album is titled "Brownsville Station Joins the Army," which has also been made into a film of the same name. The group dropped into a local Army Reserve Board during a concert lay-over as a promotional gag. But, the board didn't see the humor and 4-effed the group out of the recruiting office.. Cher will be kicking off her new series (which, incidentally, will occupy the old time slot that she and her husband Sonny previously had on ABC) with a special on February 9th. It promises to be a superstar studded evening with friends Elton John and Bette Midler scheduled to appear on the show. Her weekly variety hour will debut the week after the special replacing Apple's Way. Sonny's cancelled show is just bowing out in time to eliminate the two of them being on TV at the same time. The Godfather, Part II, will be out this month on ABC Records as acquired by the label's President, Jay Lasker...Shadoe Stevens of KMET has a new assistant with the hiring of "Sam" Bellamy. "Sam" has been Lee Zhito's right arm at Billboard Magazine for the past year and a half...



Capitol Records executives Al Coury, Senior Vice President, A&R/Promotion/Artist Development, Don Zimmermann, Senior Vice President, Marketing and Rupert Perry, General Manager, A&R celebrate with lovely Linda Ronstadt backstage at the Troubadour following her SRO opening at the West Hollywood club, and also the release of her latest album of new songs on Capitol Records, "Heart Like A Wheel."



MGM recording artist Johnny Bristol recently completed a promotional tour of major U.S. cities on behalf of his debut MGM album, "Hang On In There Baby." Pictured with Bristol (right) at a New York reception are WNEW-FM program director Scott Muni (left) and Stan Moress, MGM vice-president, artist relations.

Radio & Records

THE INDUSTRY'S NEWSPAPER

Name _____		
Company/Station _____		
Address _____		
City _____	State _____	Zip _____
<input type="checkbox"/> ONE YEAR—\$130 <input type="checkbox"/> ONE QUARTER—\$35 SPECIAL DISC JOCKEY & SMALL MKT STATION RATES UPON REQUEST		

SEND TO: Radio & Records, 6430 Sunset, Suite 1221, Hollywood, Calif. 90028



Epic Records recently held a special luncheon for recording star Donovan at the Nirvana Restaurant in New York City. Donovan (center) is shown above at the luncheon with Ron Alexenburg, Vice President, and General Manager, Epic (left); and Walter Dean, Executive Vice President, CBS Records.

COUNTRY

R&R COUNTRY HOTLINE:
(213) 466-0954

JIM DUNCAN/Editor

Radio & Records

TREND:

December 6, 1974

11/15 11/22 11/29

1	2	1	1	BILLY SWAN/I Can Help (Monument)
11	8	5	2	JOHNNY RODRIGUEZ/We're Over (Mercury)
3	3	2	3	CHARLIE RICH/She Called Me Baby (RCA)
2	1	3	4	JOHN DENVER/Back Home Again (RCA)
10	7	6	5	MEL TILLIS/Memory Maker (MGM)
24	15	9	6	LYNN ANDERSON/What a Man, My Man Is (Columbia)
27	23	12	7	GARY STEWART/Out of Hand (RCA)
-	28	18	8	MERLE HAGGARD/Kentucky Gambler (Capitol)
-	30	20	9	BILLY "CRASH" CRADDOCK/Ruby Baby (ABC)
25	14	13	10	ELVIS PRESLEY/It's Midnight (RCA)
5	4	4	11	LA COSTA/Get On My Love Train (Capitol)
-	29	19	12	RAY PRICE/Like Old Times Again (Myrrh)
-	-	20	13	GEORGE JONES/The Door (Epic)
21	18	16	14	DONNA FARGO/U.S. of A. (Dot)
20	13	11	15	BILL ANDERSON/Every Time I Turn The Radio On (MCA)
26	24	15	16	JERRY LEE LEWIS/He Can't Fill My Shoes (Mercury)
-	-	27	17	FREDDIE HART/My Woman's Man (Capitol)
-	29	17	18	ANNE MURRAY/Son Of A Rotten Gambler (Capitol)
12	9	7	19	JOE STAMPLEY/Take Me Home to Somewhere (Dot)
-	-	-	20	JOHNNY PAYCHECK/For a Moment There (Epic)
-	-	-	21	BRENDA LEE/Rock On Baby (MCA)
4	6	10	22	LORRETTA LYNN/Trouble in Paradise (MCA)
6	5	8	23	TOM T. HALL/Country Is (Mercury)
-	-	-	24	HANK WILLIAMS, JR./Angels are Hard to Find (MGM)
-	-	30	25	MEL STREET/Forbidden Angel (GRT)
-	-	-	26	BRIAN SHAW/Here We Go Again (RCA)
-	-	-	27	DAVID WILLS/Song On The Jukebox (Epic)
16	12	14	28	DAVIS HOUSTON/Can't You Feel It (Epic)
-	-	-	29	JEAN SHEPARD/Poor Sweet Baby (UA)
-	-	25	30	BOBBY BARE & FAMILY/Singing in the Kitchen (RCA)

Most added

TOM T. HALL

Sneaky Snake/I Care (Mercury)

LINDA RONSTADT

I Can't Help It (Capitol)

LITTLE DAVID WILKINS

Whoever Turned You On (MCA)

EDDIE ARNOLD

Butterfly (MGM)

CHARLEY PRIDE

Then Who Am I (RCA)

TANYA TUCKER

South Is Gonna Rise Again (Col)

DIRECT FROM DUNCAN...



The NEW Official Country Hotline number is (213) 466-0954. Now that it is the Official "guaranteed not to change" number, feel free to have it tattooed to your body for safe keeping. (It might look good next to your naked lady on the inside of your arm pit!)...MOON MULLINS will be the next Program Director of KSON, San Diego. Moon comes from WINN in Louisville, Kentucky. The new

Continued on page 17

NEW & ACTIVE

EDDIE ARNOLD (MGM) -- "Butterfly"; -- A Top added record -- KRAK, WBAP, WHN, WUBE, WONE, WWOK, KCKN, Pick-WIRE, and more.

TOM T. HALL (Mercury) -- "Sneaky Snakes-I Care" -- unmarked "A" side -- getting split play -- some stations playing both -- Adds WHO, WMC, WWOK, KENR, WCMS, KLAK, KTUF, KIKK, Pick-WPLO.

RED STEAGALL (Capitol) -- "Someone Cares for You" -- Picking up some very good strength -- Re-add WONE, Add WISZ, 13-9 KIKK, No. 3 KENR, 30-25 KBOX, 27-23 WBAP, No. 29 KWJJ, No. 26 WHK.

LINDA RONSTADT (Capitol) -- "Whatcha Gonna Do With A Dog Like That" -- Add WJJD, 24-19 KAYO, 24-17 WUBE, WPLO 48-41, 71-48 WBAP.

LITTLE DAVID WILKINS (MCA) -- "Whoever Turned You On" -- Continued good adds -- KRAK, WPLO, KIKK, KENR, KWJJ, KFOX.

TANYA TUCKER (Columbia) -- "South Is Gonna Rise Again" -- From her last L.P. -- Another big hit for the 16 year old wonder -- adds WHO, KCEY, WWOK, KRAK, WBAP, KENR, WINN, Pick-KBOX.

MAC DAVIS (Columbia) -- "Rock & Roll Gave Me The Best Years" -- Title will turn off many -- good cross over hit -- Adds WDEE, KIKK, WINN, WMC.

MOE BANDY (GRC) -- "Always So Easy" -- Debut -- 32 KCFC, AAdd WWOK, Debut-37 KFOX, Gaining KAYO

BOBBY G. RICE (GRT) -- "Make It Feel Like Love Again" -- 26-24 WBAP, Add WMNI, 30-26 WINN, 33-27 WMC.

Continued on page 17

added

Asterisk (*) denotes records Most Added this week.

WHO/DES MOINES

Roy Rogers*
Tom T. Hall*
Tanya Tucker*
Lois Johnson
Linda Ronstadt*
Tony Booth
Johnny Russell
Pick: Charley Pride*

KSON/SAN DIEGO

Waylon Jennings
Linda Ronstadt*
T.G. Sheppard
Red Steagall
WMC/MEMPHIS
Roy Clark
Donna Fargo
Tom T. Hall*
Mac Davis
Tommy Overstreet

KCEY/MODESTO

Porter Wagoner
Roy Clark
Jerry Reed
Glen Campbell
Betty Jean Robinson
Frenchie Bourque
Asleep At The Wheel
Tanya Tucker*

WHN/NEW YORK

Charlie Pride*
Merle Haggard
Eddie Arnold*

WUBE/CINCINNATI

Jerry Reed*
Charley Pride
Cliff Cochran
Eddie Arnold*
Charlie Rich (M)
Redd Stewart

WONE/DAYTON

Jim Mundy
Eddie Arnold*
Porter Wagoner
Dottie West
re add: Red Steagall

KZON/SANTA MARIA

Linda Ronstadt*
Billy Swan
Charlie Rich (M)

WWOK/MIAMI

Tanya Tucker*
Eddie Arnold*
Tom T. Hall*
Jim Ed Brown
Faron Young
Moe Bandy

KCKN/KANSAS CITY

Bud Logan
Jerry Reed
Judy Lynn
Rusty Draper
David Frizzell
Eddie Arnold*
Stonewall Jackson

KAYO/SEATTLE

Vickey Lee
Trooper Jim
Jerry Naylor
Frenchie Bourque
Jackie Ward
Hank Snow (Xmas)
Merle Haggard (Xmas)
Loretta Lynn (Xmas)

KLAC/LOS ANGELES

Nat Stuckey
Charley Pride*
Cal Smith

WEEP/PITTSBURGH

Paul McCartney
Ray Price
Johnny Paycheck
Kris Kristofferson &
Rita Coolidge

WIRE/INDIANAPOLIS

Jim Ed Brown
Roy Clark
Crystal Gayle
Tommy Overstreet
Jerry Reed
Gary Stewart
Pick: Eddie Arnold*

KCKC/SAN BERNADINO

Roy Rogers
Billy Joe Shavers
Frenchie Bourque
Asleep At The Wheel
Charlie Rich (M)
Lois Johnson
Merle Haggard (December)
Pick: Cliff Cochran

WHK/CLEVELAND

Billy Larkin
Jim Ed Brown
Jerry Reed
Faron Young

KERE/DENVER

Marilyn Sellars
Glen Campbell
Cal Smith
Asleep At The Wheel
Kris Kristofferson &
Rita Coolidge
Johnny Cash

WMNI/COLUMBUS

Mickey Gilley
Bobby G. Rice
Doyle Holly
Pick: Jerry Reed

KBUL/WICHITA

Brian Collins
Dottie West
O.B. McLinton
Jerry Reed
Ferlin Husky
Porter Wagoner

KLAK/DENVER

Tom T. Hall (Snake)*
Linda Ronstadt*

KRAK/SACRAMENTO

Tony Booth
Betty Jean Robinson
Little David Wilkins*
Eddie Arnold*
Marilyn Sellars
Roy Rogers
Tanya Tucker*
Billy Joe Shaver
Judy Lynn

WDEE/DETROIT

Charley Pride*
Brian Collins
Glen Campbell
Patti Page
Jim Ed Brown
Linda Ronstadt*
Tony Booth
Linda Hargrove
Mac Davis
Jerry Reed
Chip Taylor
Pick: Cal Smith

WPLO/ATLANTA

Jim Ed Brown
Jerry Reed
Johnny Russell
Cal Smith
Porter Wagoner
Johnny Cash
Red Williams
O.B. McLinton
Linda Ronstadt*
Little David Wilkins*
Pick: Tom T. Hall*

WISZ/BALTIMORE

Red Steagall
Moe Bandy
Tommy Overstreet
Ray Stevens
Charley Pride*

WINN/LOUISVILLE

Linda Ronstadt*
Tanya Tucker*
Mac Davis
Jim Mundy
Whitey Schaffer
Joel Mathis
Faron Young
Jerry Reed

WCMS/NORFOLK

Tom T. Hall
Pick: Glen Campbell

KIKK/HOUSTON

Little David Wilkins*
Lois Johnson
Johnny Russell
Mac Davis
Tom T. Hall (Snakes)*

WJJD/CHICAGO

Susan Raye
Tommy Overstreet
Charley Pride*
Patti Page
Jerry Reed
Bobby Vinton

KENR/HOUSTON

Dickey Lee
Tanya Tucker*
Little David Wilkins*
Tom T. Hall*
Donny King

KBOX/DALLAS

Nat Stuckey
Darrell Felts
Tennessee Ernie Ford
Pick: Tanya Tucker*

WBAP/FORT WORTH

Ferlin Husky
Tanya Tucker*
Jerry Naylor
Lois Johnson
Joe Allen
Whitey Schaffer
Tony Booth
Eddie Arnold*
Linda Ronstadt*
Cliff Cochran
Fred Boyd

WRCP/PHILADELPHIA

Waylon Jennings
Linda Ronstadt*
Harry Chapin
Asleep At The Wheel
Kris Kristofferson &
Rita Coolidge
Johnny Cash
Cal Smith
Pick: Roger Miller

KTUF/PHOENIX

Tom T. Hall (Snakes)*
Cal Smith
Re add: Jeannie Seelye

KFOX/LONG BEACH

Johnny Cash
Paul McCartney
Charley Pride*
Waylon Jennings
Linda Ronstadt*
Little David Wilkins*
Jerry Reed

KWJJ/PORTLAND

Rusty Draper
Rex Allen Jr.
Charley Pride*
Chip Taylor
Jim Stafford
Little David Wilkins*
Roger Miller
Ferlin Husky

COUNTRY

R&R COUNTRY HOTLINE:
(213) 466-0954

JIM DUNCAN/Editor

DIRECT FROM DUNCAN...



Continued from page 16

P.D. at WINN is **DICK BRAUN**, their afternoon jock. **AL RISEN** will continue as the WINN music director...

CRAIG SCOTT is leaving WSLR in AKRON to become the National Program Director of the **PLOUGH, Inc.** Country stations. He'll be based at WJJD in Chicago. **MARK EDWARDS**, WJJD's current program director, said he is being kicked upstairs to an "Untitled" management position. He will be directly responsible to Scott. (Sounds like WJJD is getting ready for the "showdown" with WMAQ.)...By the way, **LEE SHERWOOD** will be officially kicking off his country format in Chicago at WMAQ, the 50,000 watt NBC outlet, as of January 14, 1975...

HAL MC CLAIN, formerly with KFOX, is now with KENR in Houston...**WONE**, Dayton raised over \$8000. for their recent St. Jude's Radio-Thon. **MGM's** Jim Glaser and **DOT's** Brian Collins were among the celebrities donating time. Brian also donated \$20 and Jim gave some personal jewelry to be auctioned for the benefit...**WONE's** next promotion is in conjunction with the Dayton Jaycees. They're going to have a "Toys for Children" booth in downtown Dayton, December 2-23. The station's jocks will be at the booth 9 am-3pm daily, urging passerbys and listeners to donate toys for the needy...

HOTTEST RECORDS in the R & R Top 30 this week included: **MERLE HAGGARD** (18-8), **BILLY "CRASH" CRADDOCK** (20-9), **JOHNNY PAYCHECK** (Ex-20) and **BRENDA LEE** (Ex-21)...Getting good response to "Unchained Melody" on the **JOE STAMPLEY ABC-DOT** album: "Take Me Home to Somewhere"...**PENNY REEVES**, the lovely co-morning personality at KBOX, Dallas, is in the hospital due to an accident she had last week. She fell off her horse and fractured her neck. (Now that's a "pain in the neck!") Doctors say she'll be out of circulation for six months. Her cast and traction won't stop this energetic lass. She does at least an hour each morning on-the-air with her co-host **ALLEN PECK** by phone from the hospital. Flowers and cards can be sent to the station. (Money can be sent direct to me at R & R.)....

Here is a possible **RADIO FIRST**: **CHARLIE OCHS** at KTUF in Phoenix reports his station was able to use their weekend staff all day on Thanksgiving Day. Their entire staff, jocks and news, took the day off. Charlie said it worked so well, the station has plans to do it Christmas Day...

...**HOT** new records this week include: **LINDA RONSTADT** (Capitol), **TANYA TUCKER** (Columbia), **LITTLE DAVID WILKINS** (MCA), **TOM T. HALL** (Mercury), **EDDIE ARNOLD** (MGM) and **CHARLEY PRIDE** (RCA). **RED STEAGALL's** CAPITOL single, "Someone Cares for You" is starting to gain in several top markets...**CHRIS**



COLUMBIA records recording artist **FREDDY WELLER** made a recent trip to **KLAC** in Los Angeles. Pictures, left to right, **Don Langford**, Music assistant; **ART NELSON**, midday jock, **WELLER**; **CARSON SCHRIEBER**, music director, and Columbia promotion man **PAUL PLACK**.

NEW & ACTIVE

Continued from page 16

JODY MILLER (Epic) -- "Country Girl" -- After a slow start-gaining strength -- No. 7 KBUL, No. 29 WPLO, No. 26 KERE, Debut-37 WHO, No. 30 WJJD.

RECORDS TO WATCH

FIDDLIN' FRENCHIE BOURQUE -- (20th Century) -- "Big Mamou" - Cajun sound -- Another from Houston - Add KAYO, KCEY, KCKC, Plays on KFOX, KIKK, 33-28 WBAP, No. 6 KENR.

PATTI PAGE (Avco) -- "I May Not Be Lovin' You" -- Add WDEE, WJJD.

FERLIN HUSKY (ABC) -- "Champagne Ladies & Blue Ribbon Babies" -- Added WBAP, KBUL, KWJJ.

TONY BOOTH (Capitol) -- "Watch Out For Lucy" -- Adds WDEE, KRAK, WBAP.

ROY CLARK (ABC-Dot) -- "Dear God" -- Adds WMC, KECY, WIRE.

CLIFF COCHRAN --(Enterprise) -- "All the Love You'll Ever Need" -- Pick-KCKC, Added WUBE, WBAP.

WAYLON JENNINGS (RCA) -- "Rainy Day Women" -- Added KFOX, KSON, WRCP.

ROY ROGERS (20th) -- "Hoppy, Gene & Me" -- Add WHO, KCKC, KRAK.

CHARLIE RICH (mercury) -- "Somethings Coming Over Me" -- Adds WUBE, KZON, KCKC,

JIM ED BROWN (RCA) -- "Don Jr." -- Adds WWOK, WHK, WIRE, WDEE, WPLO.

COLLIER, Program Director of KFOX, Long Beach, California is looking for talent. Tapes and resumes to Chris at: KFOX, P.O. Box 1280, Long Beach, Calif. No calls....

KLAC, Los Angeles is hosting a country music radiothon this Sunday, December 8 at the Palamino Club in North Hollywood. They hope to raise \$25,000 for the **John Edward Memorial Foundation**, based at the Folklore and Mythology Center at the University of California, L.A. The foundation is

dedicated to "furthering the serious study, public recognition and preservation of Country-Western Music." Any interested artist might drop by the club this Sunday between noon and 9 PM to help....I was in a Hollywood coffee shop the other day, when I overheard a couple of gals talking about capital punishment. One said to the other: "I believe in capital punishment, as long as it's not too severe!?!"...and on that "dead" joke, we will wish you well until next week...bye ya all.....

Biff Collie will return next week.

CORRESPONDENTS' CORNER



RICH JONES

Getting involved in all phases of Radio has been stock-in-trade of young Rich Jones---WAM-E Music Director and 7 PM to Midnight Air Personality. Rich, not content with doing an air show only---has held other positions and accepted additional responsibilities at every radio station he has worked for in his young career.

Rich's radio career began in his home town of Gastonia at WLTC.

After about eight months---Jones latched on to a part-time position at another Gastonia radio station, WGNC, mostly week ends.

In April 1972, Jones left WGNC for full-time employment at WRHI, Rock Hill.

Jones joined the WAM-E staff on a full time basis in January of 1973 doing the seven to midnight show and handling public service. This past summer, Rich was given the added duty of Music Director of the Modern Country outlet.



Columbia has recently released a new single by Johnny Cash. The song, Tim Hardin's "The Lady Came From Baltimore," was performed by Cash on the recently televised CMA Awards show. Cash (center) is shown above with Gary Klein (left), Coordinator and Producer, A&R, Columbia Records, who produced the single; and Charles Koppelman, Vice President, National A&R, Columbia Records.

MOST REQUESTED:

GARY STEWART
Out Of Hand (RCA)

BILLY SWAN
I Can Help (Monument)

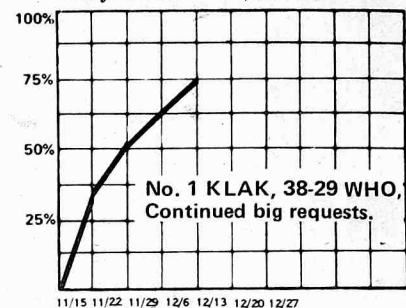
RONNIE MILSAP
Legend In My Time (RCA)

Graphs reflect audience response computed by a combination of sales, airplay and requests. The lower the graph position the less airplay, sales and requests being reported. The higher the position, the more active the record. We feel that a visual aid explains the whole picture better than assigning arbitrary numbers in a longer list.

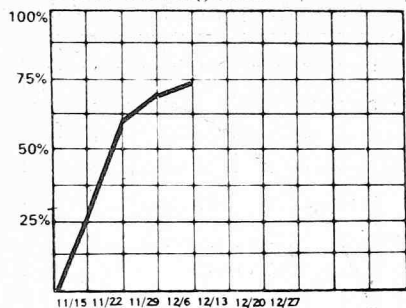
COUNTRY SINGLES

new entries

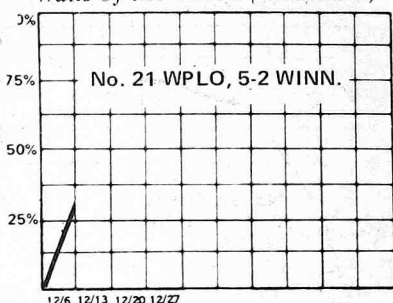
C.W. McCALL
Wolf Creek Pass (MGM)



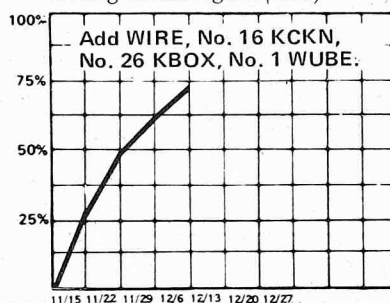
REX ALLEN, JR.
Never Coming Back (W. Bros.)



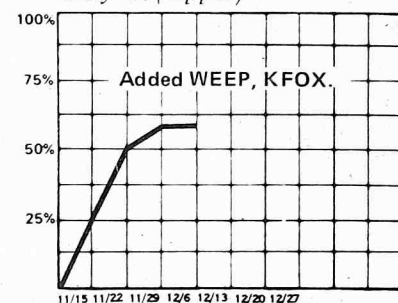
DAVID ALLEN COE
Walls of the Bottle (Columbia)



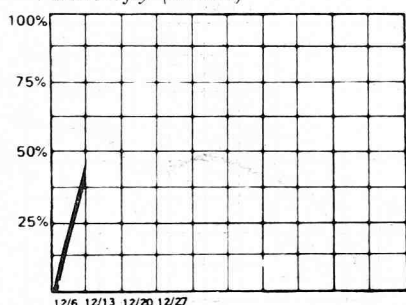
CRYSTAL GALE
Wrong Road Again (UA)



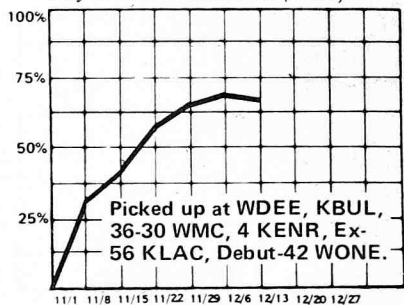
PAUL McCARTNEY
Sally G. (Apple)



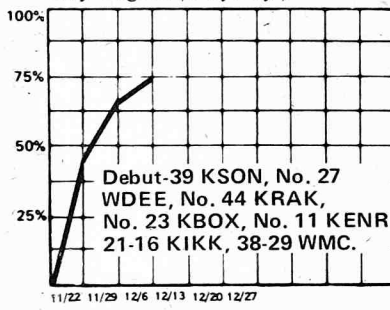
EDDIE ARNOLD
Butterfly (MGM)



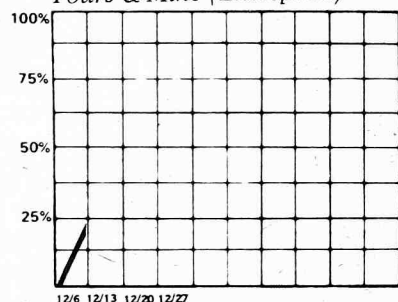
BRIAN COLLINS
Way Love Should Be (Dot)



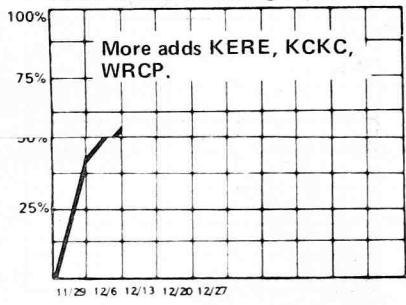
MICKEY GILLEY
City Lights (Playboy)



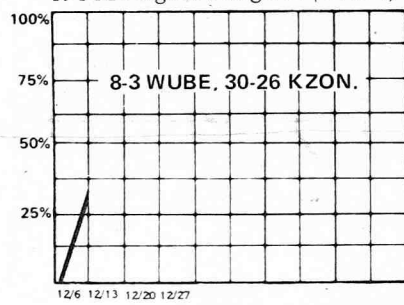
O.B. McCLINTON
Yours & Mine (Enterprise)



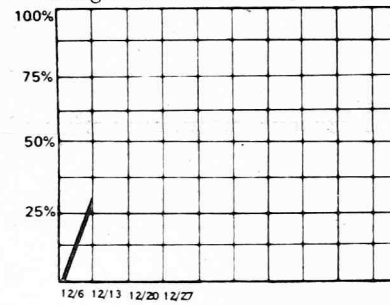
ASLEEP AT THE WHEEL
Choo Choo Ch'Boogie (Epic)



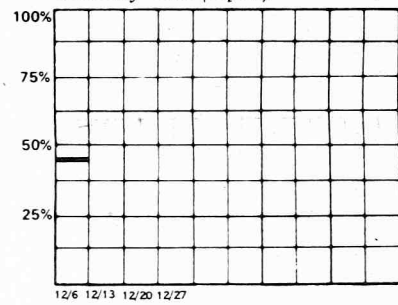
PAUL CRAFT
It's Me Again Margaret (Truth)



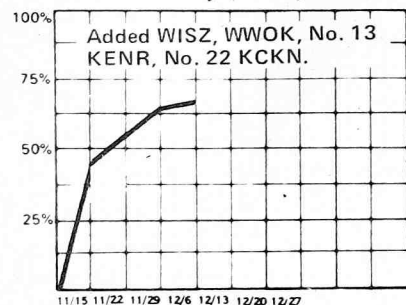
JIM GLASER
Forgettin' About Me (MGM)



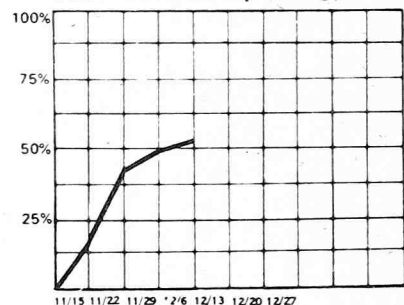
JODY MILLER
Country Girl (Epic)



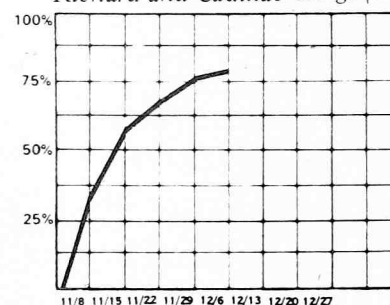
MOE BANDY
It Was So Easy (GRC)



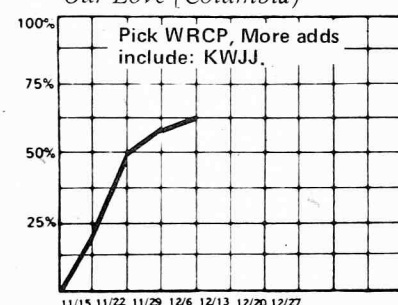
PAUL DAVIS
Ride 'Em Cowboy (Bang)



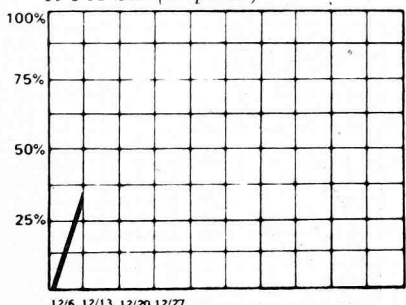
DOYLE HOLLY
Richard and Cadillac Kings (Barnaby)



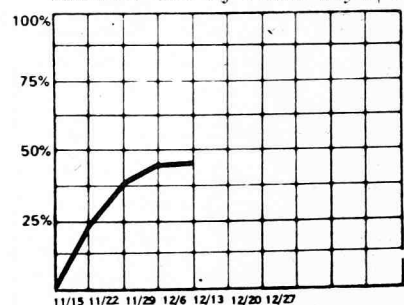
ROGER MILLER
Our Love (Columbia)



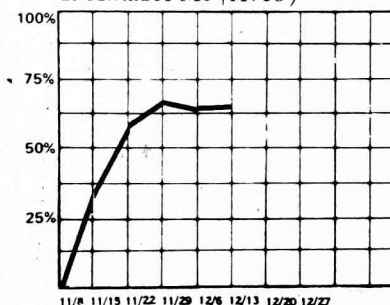
GLEN CAMPBELL
It's A Sin (Capitol)



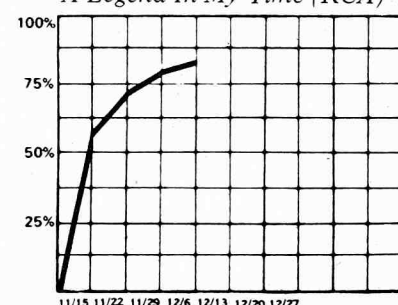
MUNDO EARWOOD
Another One Of Those Days (GRT)



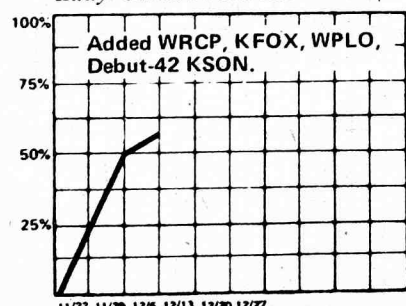
MARY KAY JAMES
It Amazes Me (Avco)



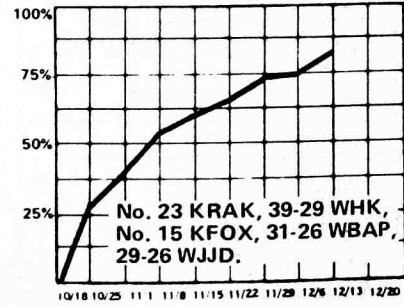
RONNIE MILSAP
A Legend In My Time (RCA)



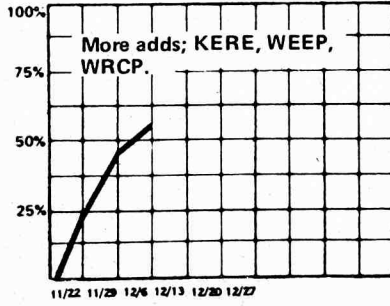
JOHNNY CASH
Lady Came From Baltimore (Col)



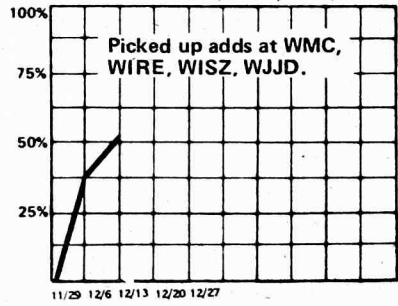
BARBARA FAIRCHILD
Little Girl Feeling (Columbia)



KRISTOFFERSON & COOLIDGE
Rain (Monument)



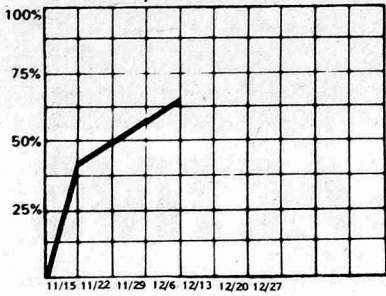
TOMMY OVERSTREET
I'm A Believer (ABC/Dot)



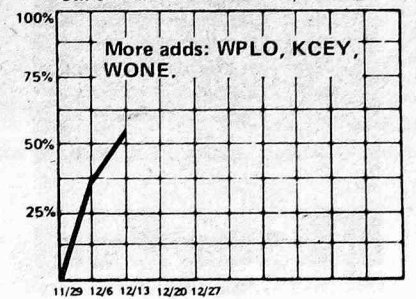
COUNTRY SINGLES

new entries

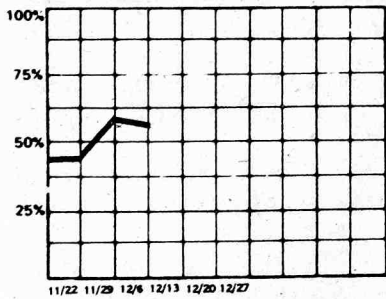
BUCK OWENS
Great Expectations (Capitol)



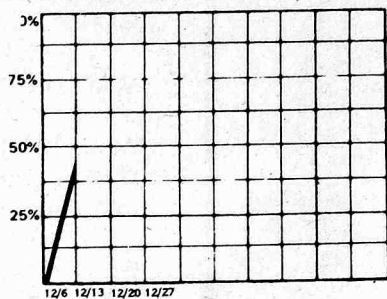
PORTER WAGONER
Carolina Moonshiner (RCA)



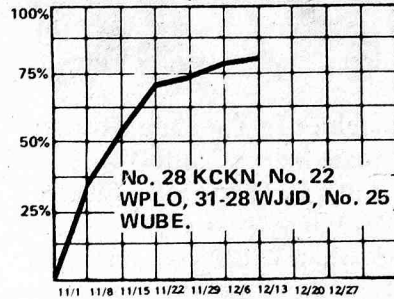
SAM NEELEY
You Can Have Her (A&M)



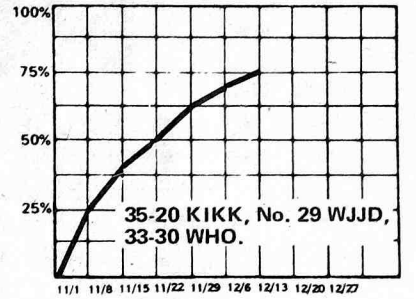
LINDA RONSTADT
I Can't Help It (Capitol)



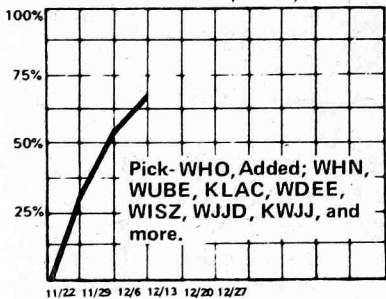
CONNIE SMITH
I've Got Baby on My Mind (Columbia)



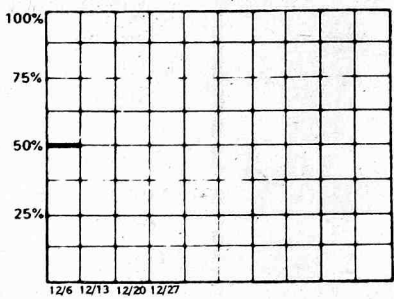
JERRY WALLACE
I Wonder Whose Baby (MCA)



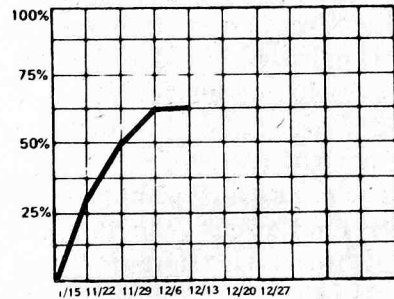
CHARLIE PRIDE
Then Who Am I (RCA)



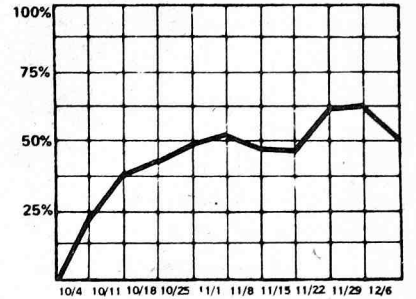
JEANNIE SEELEY
He Can Be Mine (MCA)



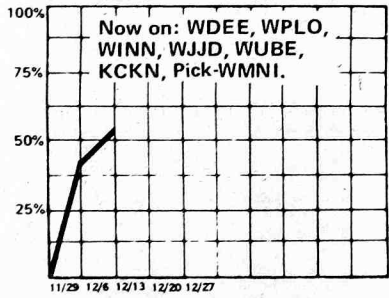
HANK SNOW
You're Easy To Love (RCA)



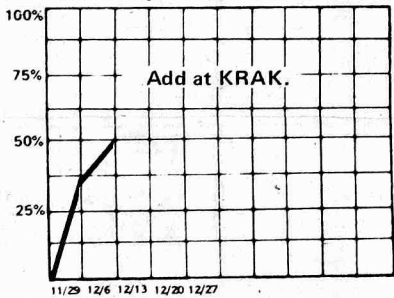
NANCY WAYNE
Gone (20th Century)



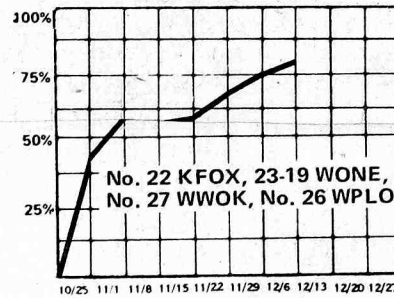
JERRY REED
Let's Sing Our Song (RCA)



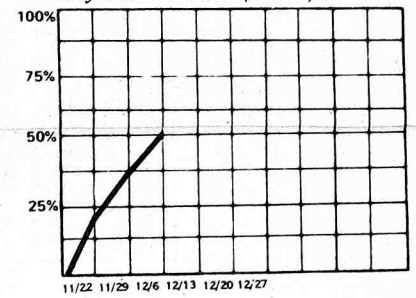
MARILYN SELLARS
He's Everywhere (Mega)



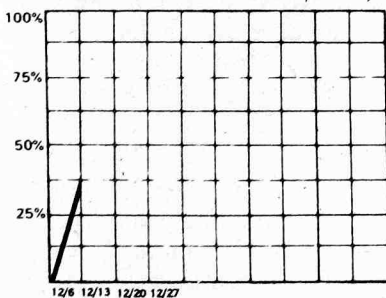
STATLER BROS.
Susan When She Tried (Mercury)



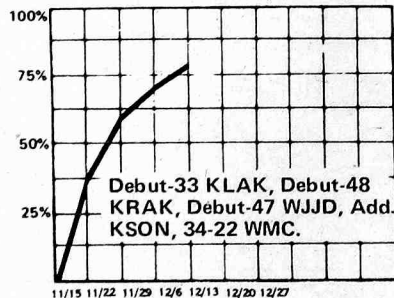
DOTTIE WEST
Lay Back Lover (RCA)



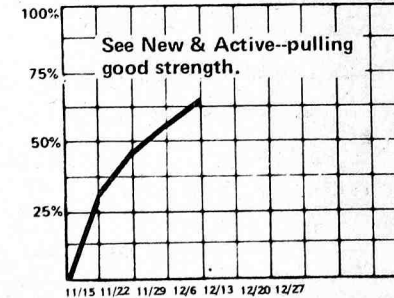
BOBBY G. RICE
Make It Feel Like Love (GRT)



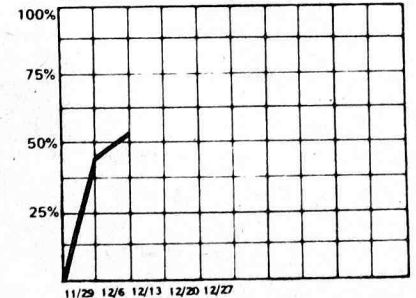
T.G. SHEPPARD
Devil In The Bottle (Melodyland)



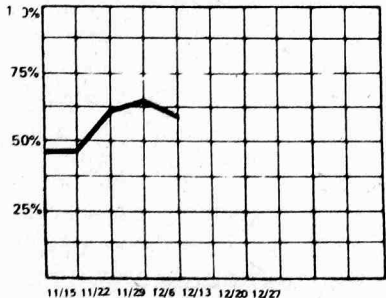
RED STEGALL
Someone Cares For You (Capitol)



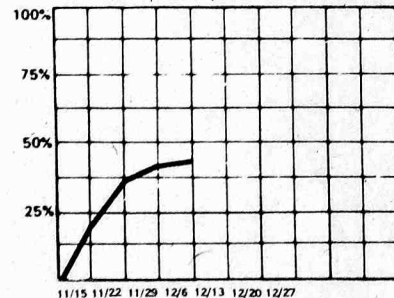
DON WILLIAMS
Ties That Bind (ABC/Dot)



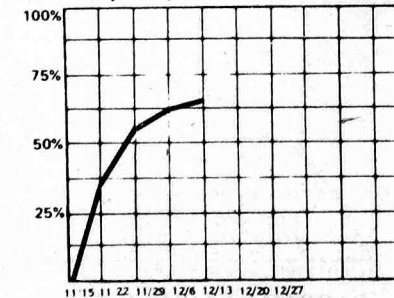
MARTY ROBBINS
Two Gun Daddy (MCA)



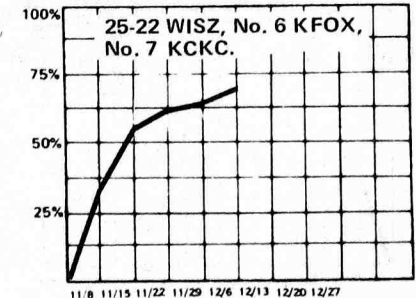
PATSY SLEDD
See Saw (ABC)



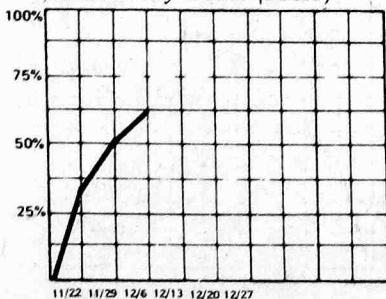
RAY STEVENS
Everybody Needs Rainbow (Barnaby)



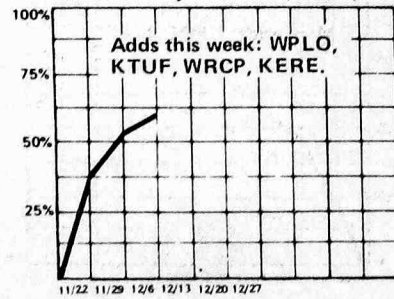
TEX WILLIAMS
Bum Bum Bum (Granite)



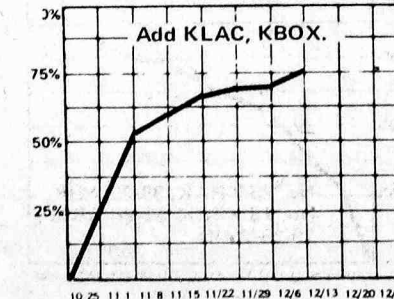
BETTY JEAN ROBINSON
On The Way Home (MCA)



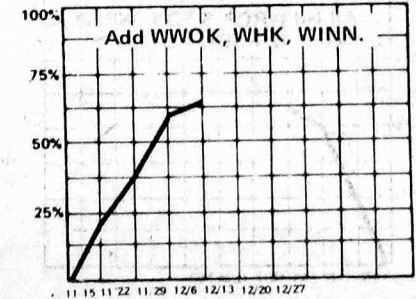
CAL SMITH
Time To Pay Fiddler (MCA)



NAT STUCKEY
You Don't Have To Go Home (RCA)



FARON YOUNG
Another You (Mercury)



POP

Radio & Records POP/30

11/22	11/29	
6	3	① NEIL SEDAKA/Laughter In The Rain (Rocket)
8	5	② HELEN REDDY/Angie Baby (Capitol)
2	1	3 HARRY CHAPIN/Cat's In The Cradle (Elektra)
18	11	④ BARRY MANILOW/Mandy (Arista)
3	2	5 THREE DEGREES/When Will I See You Again (Phy/Int)
14	8	6 FRANKIE VALLI/My Eyes Adored You (Private Stock)
5	5	7 TELLY SAVALAS/If (MCA)
12	10	8 ELVIS PRESLEY/Promised Land & It's Midnight (RCA)
19	13	⑨ GLORIA GAYNOR/Never Can Say Goodbye (MGM)
7	6	10 NEIL DIAMOND/Longfellow Serenade (Columbia)
1	4	11 BILLY SWAN/I Can Help (Monument)
13	12	12 CHICAGO/Wishing You Were Here (Columbia)
23	17	⑬ RINGO STARR/Only You (Apple)
16	14	14 BARRY WHITE/You're The First (20th)
15	15	15 PAUL DAVIS/Ride 'Em Cowboy (Bang)
25	22	⑯ RIGHTEOUS BROS/Dream On (Haven)
24	19	17 PAUL ANKA & ODIA COATES/One Man Woman (UA)
4	9	18 BOBBY VINTON/My Melody Of Love (ABC)
22	21	19 POINTER SISTERS/Fairytale (Blue Thumb)
27	25	⑳ STARK & MCBRIEN/Isn't It Lonely Together (RCA)
26	24	21 PETER DEAN/Four Or Five Times (Buddah)
-	27	⑳ DONNY & MARIE OSMOND/Morning Side Of The Mountain
-	28	㉑ CARPENTERS/Please Mr. Postman (A&M)
30	26	24 DON POTTER/Just Leave Me Alone (Columbia)
-	30	25 PAUL MCCARTNEY/Sally G (Apple)
-	-	⑳ ELTON JOHN/Lucy In The Sky With Diamonds (MCA)
-	-	27 CAROL DOUGLAS/Doctor's Orders (Midland)
-	28	28 CARL GRAVES/Baby, Hang Up The Phone (A&M)
-	-	29 MICHAEL HOLM/When A Child Is Born (Mercury)
-	-	30 PETER SHELLEY/Gee Baby (Arista)
-	-	31 SWEET SENSATIONS/Sad Sweet Dreamer (Pye)

NEW & ACTIVE

NOTE: Last week's holiday plus the Bill Gavin conference in Kansas City caused an abbreviated music schedule at many stations. R&R's full network of reporting stations will be reflected next week.

MAC DAVIS "Rock 'N Roll" (Columbia) Super start ... KMBZ, WBAL, WASH, WWDC, KULF, KMPC, KGIL.

DAWN "Look Into My Eyes" (Arista) Now in single form ... on KIIS, WCAR, WMAL, WASH, WGAN, KVI, KNBR, WFIR.

ELTON JOHN "Lucy In The Sky" (MCA) on WGAR, WGR, WCBM, WABI, WINZ, KMPC.

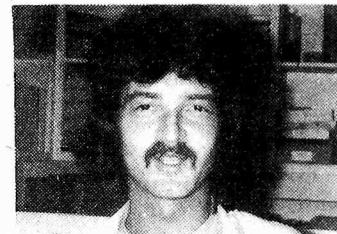
EAGLES "Best Of My Love" (Asylum) Starting at WGAR, WBAL, KMEN.

LINDA RONSTADT "You're No Good" (Capitol) Good initial play at KIIS, WFIR, WASH, WBAL.

PET CLARK "Lovin' Arms" (ABC) Add WGN, KRNT, KIIS.

Other Radio Activity: **JONI MITCHELL** "Big Yellow Taxi," **ASLEEP AT THE WHEEL** "Choo Choo Cha Boogie," **DON McLEAN** "La La Love You," **ANNE MURRAY** "Daytripper," **JOHNNY NASH** "Celebrate Life," **GLADYS KNIGHT & PIPS** "The Way We Were" LP cut, **AL MARTINO** "To The Door Of The Sun," **GLEN CAMPBELL** "It's A Sin," **KRIS & RITA** "Rain," **SPLINTER** "Costafine Town."

POP NOTES



BY MIKE KASABO

We'd like to welcome **KDIG** and **Ross W. Forbes** from the San Diego area, specifically La Jolla. Ross will be reporting each week the music happenings for South Southern California.

Records that seem to be picking up rapidly this week: "Just Leave Me Alone" **Don Potter** ... several new believers include WFIR, WASH, WSM. Also getting phone action at most stations already playing. "Like A Sunday Morning" **Lana Cantrell** on Polydor is one of a few smooth ballad-type records that appear to be getting very good phone action. The spread is not heavy yet, but it appears to be picking up nicely. **Linda Ronstadt** went home to the company that saw her first hit. "Different Drum" by Linda & The Stone Poneys turned into a big national record. Her newest "You're No Good" is being received exceptionally well across the country. Check New & Active for early returns.

Now that the **Carpenters** have added **The Pat Boone Family**, we have another situation of similar note between **Mac Davis** and **Terry Jacks**. Two very similar songs with the edge going to the artist, and the dues just keep on comin'.

New **Anne Murray** picking up some good initial action, as is **Glen Campbell**. I wonder if they will ever team up for an album?

Stark & McBrien recorded several ID intros for a number of stations across the country. Vocal is laid over the musical intro to "Isn't It Lonely Together." Comes off very well.

Several stations are reporting the flip side of **Elton John's** "Lucy In The Sky With Diamonds." The song "One Day At A Time" was written by Mr. Winston O. Boogie himself... **John Lennon**.



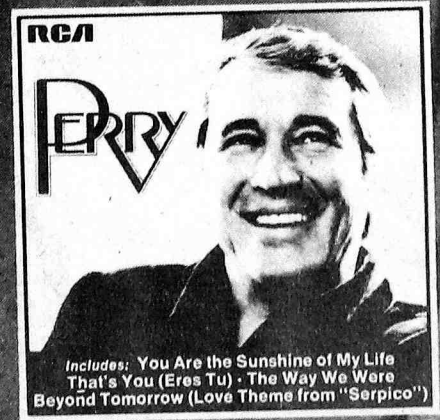
Johnny Mathis just concluded a special nine-day engagement on Broadway at the Uris Theatre. Mathis performed a total of twelve concerts over the nine days before predominantly sold-out audiences. Shown above at a special reception thrown by Columbia Records following Mathis' opening night performance are Mathis (left) and Irwin Segelstein, President, CBS Records.

The 1974 holiday single from Perry.
"Christmas Dream" (From the movie "The Odessa File")

PB-10122

Hear him sing it on his CBS

TV Special December 17th
8:30 P.M. (7:30 C.S.T.)



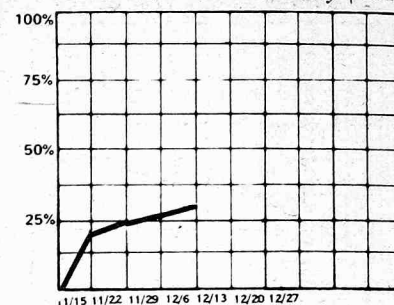
And don't forget his latest album.
RCA Records and Tapes

Graphs reflect audience response computed by a combination of sales, airplay and requests. The lower the graph position the less airplay, sales and requests being reported. The higher the position, the more active the record. We feel that a visual aid explains the whole picture better than assigning arbitrary numbers in a longer list.

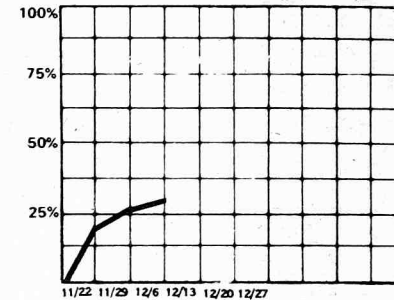
POP SINGLES

new entries

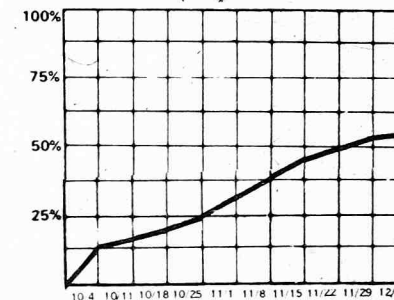
FIRST CLASS
Dreams Are Ten A Penny (UK)



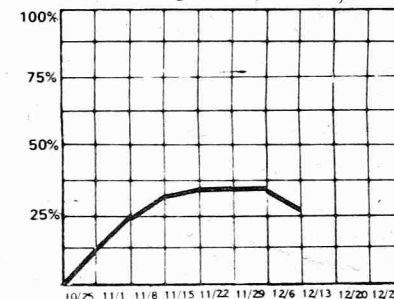
GEORGE FISCHOFF
That Great Old Song (Lisa)



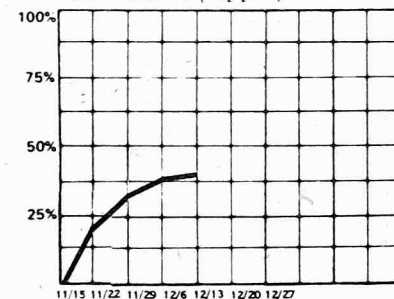
AL GREEN
Sha-La-La (Hi)



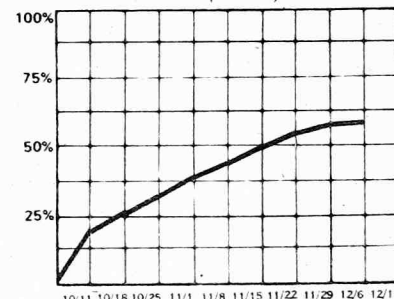
ALBERT HAMMOND
Names, Tags Etc. (MUMS)



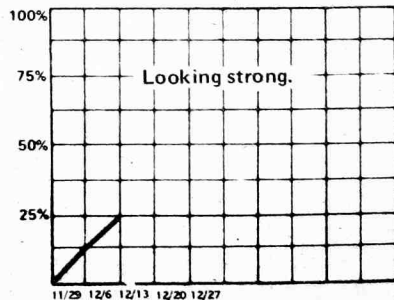
GEORGE HARRISON
Dark Horse (Apple)



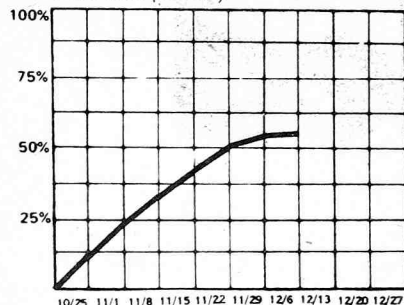
HUES CORPORATION
Rockin' Soul (RCA)



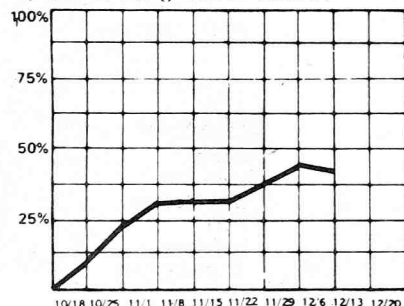
BILLY JOEL
The Entertainer (Columbia)



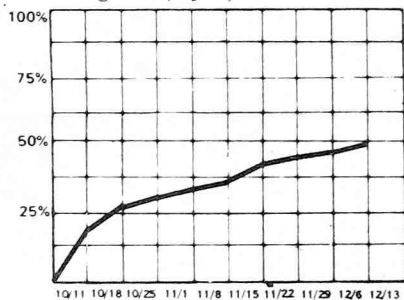
BEE GEES
Charade (Atco)



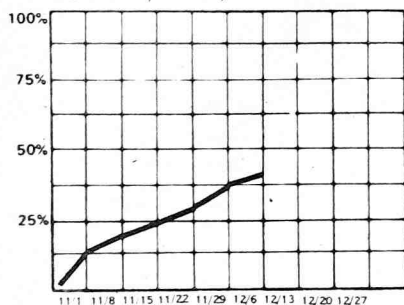
BLUE MAGIC
Three Ring Circus (Atco)



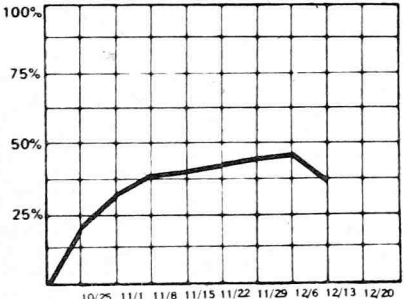
BOOKER T.
Evergreen (Epic)



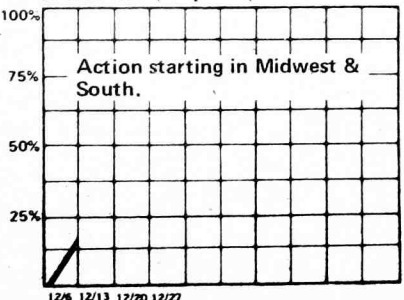
JOHNNY BRISTOL
You & I (MGM)



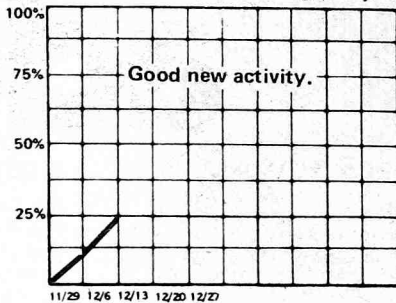
ALLEN BURTON
Phone Call From Allison (ABC)



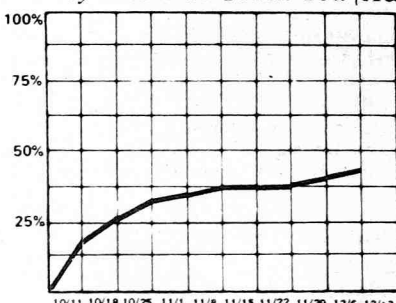
GLEN CAMPBELL
It's A Sin (Capitol)



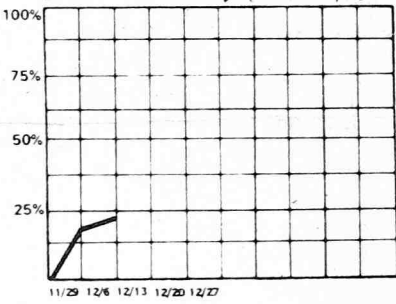
LANA CANTRELL
Like A Sunday Morning (Polydor)



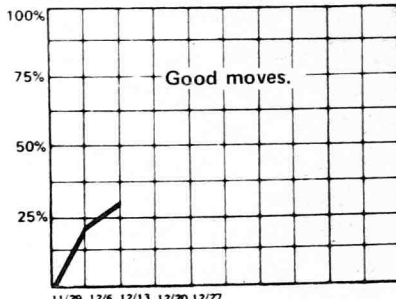
CAPTAIN & TENNILLE
Way I Want To Touch You (A&M)



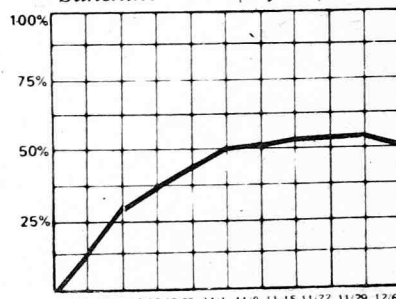
CHER
A Woman's Story (Warner/Spector)



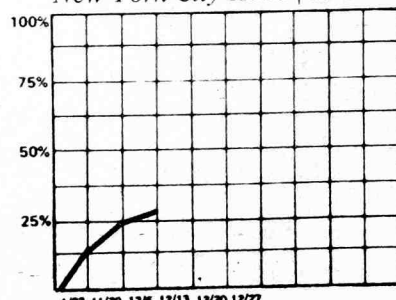
PET CLARK
Lovin' Arms (ABC)



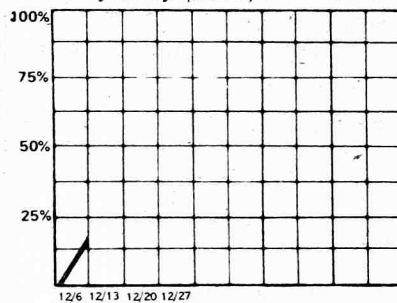
GENE COTTON
Sunshine Roses (Myrrh)



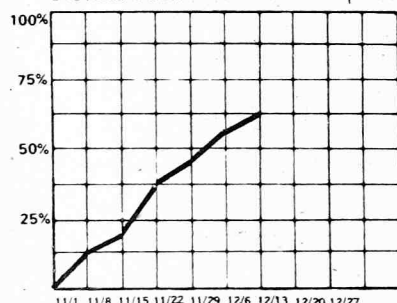
COTTONWOOD SOUTH
New York City Hello (Columbia)



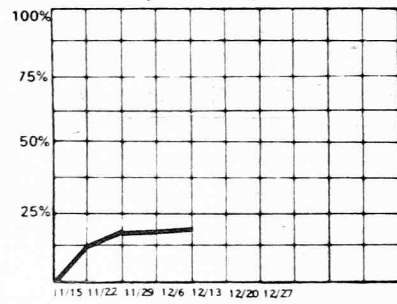
BILLY "CRASH" CRADDOCK
Ruby Baby (ABC)



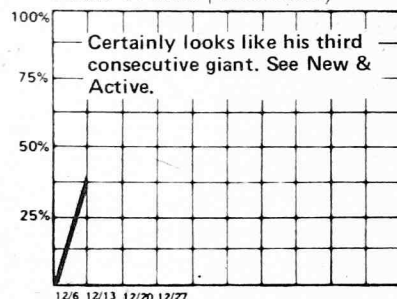
CUNNINGHAM
Norma Jean A Movie Star (Haven)



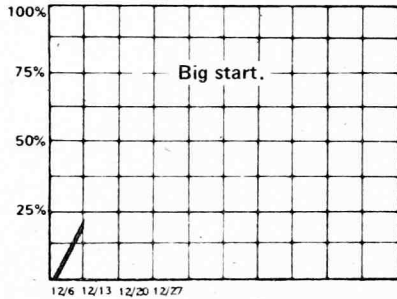
KATHY DALTON
Justine (DisCreet)



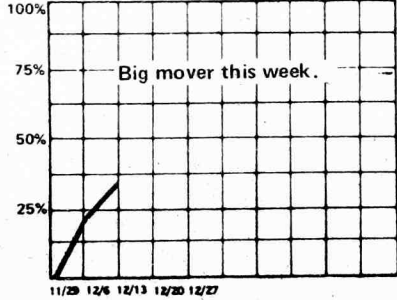
MAC DAVIS
Rock 'N Roll (Columbia)



DAWN
Look Into My Eyes (Arista)



EAGLES
Best Of My Love (Asylum)



Good new activity.

Good moves.

Certainly looks like his third consecutive giant. See New & Active.

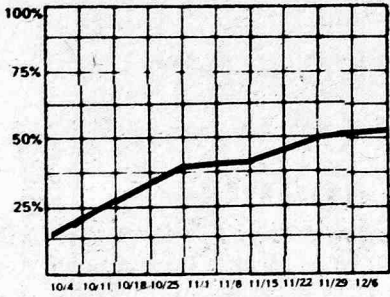
Big start.

Action starting in Midwest & South.

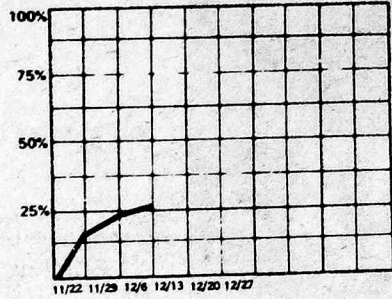
Big mover this week.

Looking strong.

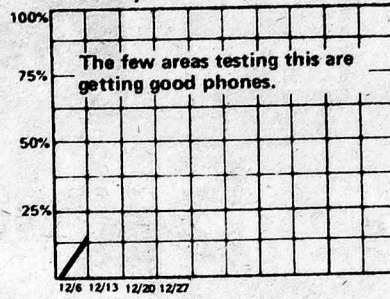
TOM JONES
Something About You Baby (Parro)



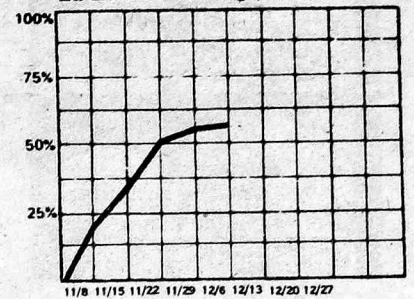
JODY MILLER
Country Girl (Epic)



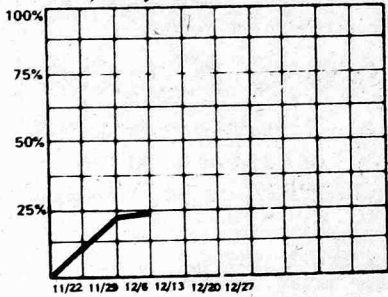
TOMITA
Arabesque No. 1 (RCA)



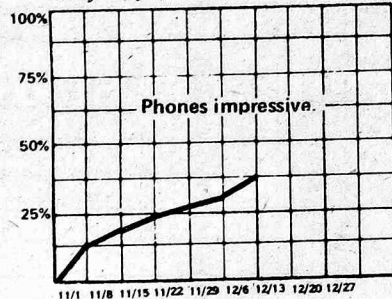
AL WILSON
La La Peace Song (Bell)



ANDY KIM
Fire, Baby I'm On Fire (Capitol)



WAYNE NEWTON
Lady Lay (Chelsea)



added

WFIR-ROANOKE

Dawn
Carpenters
Linda Ronstadt
Don Potter
Carl Graves

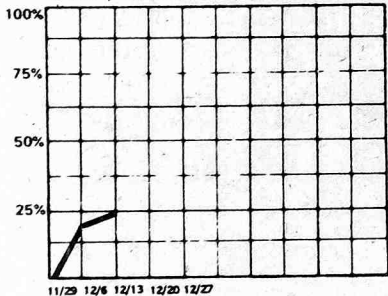
KMBZ-KANSAS CITY

Mac Davis
Roy Rogers
Donny & Marie Osmond
Stark & McBrien
Lp: "Shake, Rattle" B. Swan

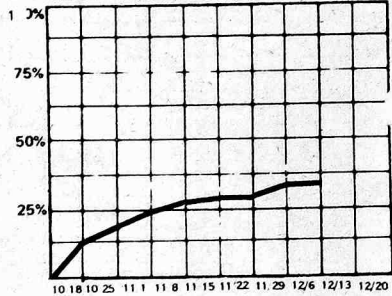
WABI-BANGOR

Elton John
Carpenters
Glen Campbell
Blue Magic
Cat Stevens
Bee Gees
Kris & Rita
Jody Miller
Billy Crash Craddock
Kathy Dalton

KRIS & RITA
Rain (Monument)



MALCOLM ROBERTS
Love Is All (BASF)



KHIS-LOS ANGELES

Ray Stevens
Bill Withers (Road)
Pet Clark
Dawn
Vikki Carr
Lp: "Eyes" N. Sedaka
Carol Douglas
Donny & Marie Osmond

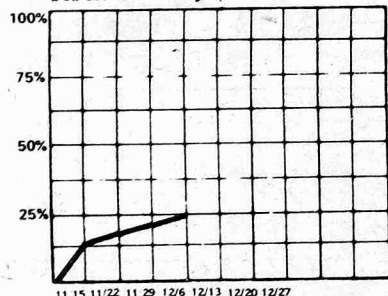
WLW-CINCINNATI

No adds
HOT
Magic Organ
Frankie Valli

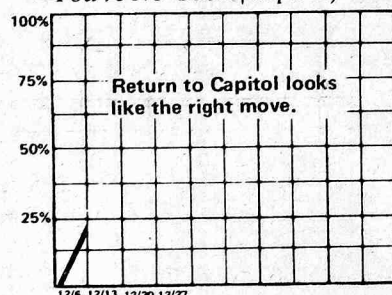
WGAN-PORTLAND

Dawn
Herb Ohta
Don McLean
HOT
Neil Sedaka
Three Degrees

BRENDA LEE
Rock On Baby (MCA)



LINDA RONSTADT
You're No Good (Capitol)



KGIL-SAN FERNANDO

Mac Davis
Carpenters
Anne Murray
Brook Benton

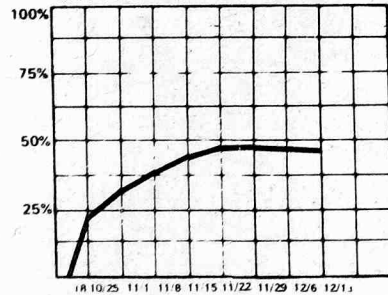
KRNT-DES MOINES

Barry Manilow
Pet Clark
Peter Shelly
Carl Douglas

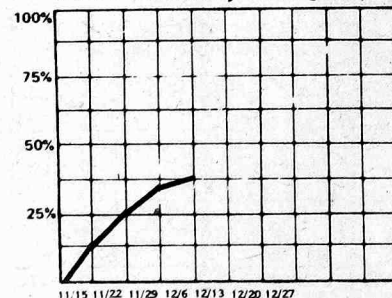
KULF-HOUSTON

Mac Davis
Sweet Sensation
Kris & Rita
Glen Campbell

PEGGY LEE
Let's Love (Atlantic)



APRIL STEVENS
Won't You Marry Me Again (A&M)



KMPC-LOS ANGELES

Stark & McBrien
Elton John
Donny & Marie Osmond
Mac Davis
Michael Holm

WEEI FM-BOSTON

Randy Edelman
Jack Jones

WSM-NASHVILLE

Smokey Robinson
Don Potter

KNBR-SAN FRANCISCO

Dawn
Elton John (One Day)
Kevin Johnson
Tom Jones

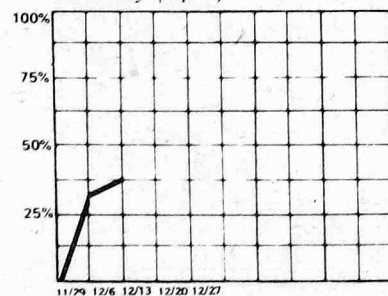
WBAL-BALTIMORE

Cat Stevens
Mac Davis
Carl Douglas
Linda Ronstadt
Carpenters
Eagles
Al Martino

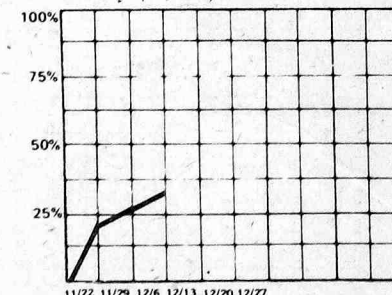
WINZ-MIAMI

Carol Douglas
Stark & McBrien
Elton John
Barry Manilow
HOT
Carpenters

DAVE LOGGINS
Someday (Epic)



CAT STEVENS
Ready (A&M)



KVI-SEATTLE

Dawn
Donny & Marie Osmond
Michael Holm
Stark & McBrien
Lp's: Joni Mitchell "Taxi" & "Both Sides"

WCBM-BALTIMORE

Barry Manilow
Elton John
Paul McCartney

WJW-CLEVELAND

Glen Campbell
Wayne Newton
Johnny Cash
Gloria Gaynor
Rita Coolidge
Nancy Wilson

KWAV-MONTEREY

Rita Coolidge
Glen Campbell
Dan Fogelberg
Johnny Cash
Booker T.
Three Degrees
Herb Ohta

WMAL-WASHINGTON

Dawn
Stark & McBrien

WASH-WASHINGTON

Linda Ronstadt
Don Potter
Paul McCartney
Stark & McBrien
Mac Davis

WEMP-MILWAUKEE

Don Drumm
Roy Rogers
Glen Campbell
Pet Clark
Carpenters
Lana Cantrell
Sweet Sensation
Eagles
Marilyn Sellars
Dawn

WCAR DETROIT

Elvis (Promised)
Joni Mitchell
Dawn
Bob Seger
HOT
Harry Chapin
Barry White

DAWN

Asleep At The Wheel
PHONES:
Carpenters
Barbara Streisand album

WWDC-WASHINGTON

Mac Davis
HOT
Barry Manilow
Paul Anka
Ringo Starr

WREC-MEMPHIS

Carpenters
Lana Cantrell
Rita Coolidge
Dawn
Al Martino
Michael Holm
Eagles
Paul McCartney
Sweet Sensation

WGAR CLEVELAND

Elton John
Eagles
Jethro Tull
HOT
Carl Douglas
Eric Clapton
Paul Anka

KMEN-SAN BERNARDINO

Gloria Gaynor
Booker T.
Kris & Rita
Peter Shelly
Eagles
CALLS:
Roy Rogers

WPTS-PITSTON/SCRANTON

Cat Stevens
George Harrison
Michael Holm
Glen Campbell
Billy Joel
Johnny Nash

WGR-BUFFALO

Elton John
Ringo Starr
Paul McCartney (Sally G)

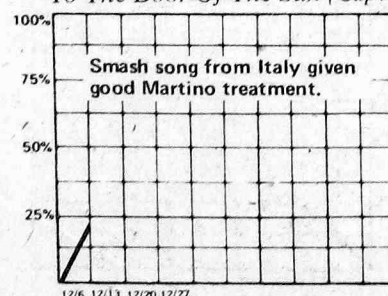
WNEU-WHEELING

Frankie Valli
Carpenters
Donny & Marie Osmond
Ringo Starr

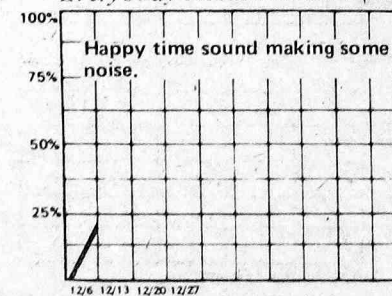
WGN-CHICAGO

Pet Clark
HOT
"Way We Were" G. Knight

AL MARTINO
To The Door Of The Sun (Capitol)



RAY STEVENS
Everybody Needs Rainbow (Barnaby)



Radio & Records

THE INDUSTRY'S NEWSPAPER

TREND: December 6, 1974

11/15 11/22 11/29

3	1	1	①	CARL DOUGLAS/Kung Fu Fighting (20th)
1	2	2	②	BILLY SWAN/I Can Help (Monument)
4	3	3	③	THREE DEGREES/When Will I See You Again (Phy/Int)
11	5	4	4	HARRY CHAPIN/Cat's In The Cradle (Elektra)
12	7	5	5	HELEN REDDY/Angie Baby (Capitol)
23	13	10	6	PAUL MCCARTNEY/Junior's Farm (Apple)
30	17	11	7	BARRY WHITE/You're The First, Last (20th)
-	31	13	⑧	ELTON JOHN/Lucy In The Sky With Diamonds (MCA)
5	8	8	9	BOBBY VINTON/My Melody Of Love (ABC)
13	9	9	10	B.T. EXPRESS/Do It (Scepter)
-	26	16	11	NEIL SEDAKA/Laughter In The Rain (Rocket)
6	6	6	12	NEIL DIAMOND/Longfellow Serenade (Columbia)
-	38	24	⑬	RINGO STARR/Only You (Apple)
19	18	17	14	AL GREEN/Sha-La-La (Hi)
-	24	20	⑮	JETHRO TULL/Bungle In The Jungle (Chrysalis)
2	4	7	16	BACHMAN-TURNER/You Ain't Seen Nothing Yet (Mercury)
-	-	29	⑰	CARPENTERS/Please Mr. Postman (A&M)
15	12	12	18	CHICAGO/Wishing You Were Here (Columbia)
8	11	15	19	CARL CARLTON/Everlasting Love (Back Beat)
-	33	26	20	STEVIE WONDER/Boogie On Reggae Woman (Tamla)
21	20	19	21	KIKI DEE BAND/I Got The Music In Me (Rocket)
10	16	18	22	JOHN LENNON/Whatever Gets You Through The Night (Apple)
26	25	25	23	RUFUS/You Got The Love (ABC)
-	-	-	⑳	BARRY MANILOW/Mandy (Bell)
7	10	14	25	AMERICA/Tin Man (WB)
-	30	33	⑳	POINTER SISTERS/Fairytale (Blue Thumb)
-	28	28	27	ROLLING STONES/Ain't Too Proud To Beg (Rolling Stones)
-	-	36	28	GLORIA GAYNOR/Never Can Say Goodbye (MGM)
14	15	22	29	JOHN DENVER/Back Home Again (RCA)
24	23	30	30	PAUL DAVIS/Ride 'Em Cowboy (Bang)
-	35	32	31	GLADYS KNIGHT & PIPS/I Feel A Song (Buddah)
-	-	34	32	LYNYRD SKYNYRD/Free Bird (MCA)
-	-	35	33	ELVIS PRESLEY/Promised Land (RCA)
25	22	27	34	PRELUDE/After The Goldrush (Island)
17	19	23	35	REUNION/Life Is A Rock (RCA)
9	15	21	36	CAROLE KING/Jazzman (Ode)
-	-	40	37	ANKA-COATES/One Man Woman, One Woman Man (UA)
-	-	38	38	J. GEILS BAND/Must Of Got Lost (Atlantic)
-	40	37	39	HUDSON BROS/So You Are A Star (Casablanca)
-	-	-	40	GEORGE HARRISON/Dark Horse (Apple)

National Request Tabulation

- | | |
|------------------|------------------|
| 1. CARL DOUGLAS | 6. JETHRO TULL |
| 2. HARRY CHAPIN | 7. CARPENTERS |
| 3. HELEN REDDY | 8. BILLY SWAN |
| 4. THREE DEGREES | 9. BARRY MANILOW |
| 5. ELTON JOHN | 10. NEIL SEDAKA |

OTHER STRONG ACTION:

PAUL DAVIS
BTO
LYNYRD SKYNYRD
B.T. EXPRESS

NOTE: Due to the Gavin schedule many of the attending PD's were not able to report this week. We have 75 percent of our normal stations reporting so please understand that some station action will be missing.

NEW & ACTIVE

The following records are listed in order by their activity

GRAND FUNK

Some Kind Of Wonderful (Capitol)

Strong action this week Add WQXI, Add WBG, Add WRFC, Add 30 KTKT, Add WJBQ, On WMAK, On WFIL, Add KUPD, Add WFOM, Add WROV, On KJR, Add KREM, On WGN, Add WYRE.

LINDA RONSTADT

You're No Good (Capitol)

Add WRKO, Add KQWB, Add WAKY, On KING, On WRFC, On WMAK, D39 WFOM, Add WROV, D 28 KJOY, D 39 KYSN, On WRIE, D 30 WGNG, D 35 KTLK.

DISCO-TEX

Get Dancin' (Chelsea)

Add 16 WABC, 20-5 99X, Add WAKY, On WFIL, Add WGRQ, On KEZY, 26-25 WSAI, Add WYSL, Add WNOE, D 16 WVOV, Add WRFC, 33-22 WKLO.

AVE. WHITE BAND

Pick Up The Pieces (At)

Add 27 KHJ, Add 27 WRKO, Add 29 WAVZ, On WAKY, On WKLO, On WROV, On WISM, D 30 KJR, D 18 WLEE, Add 33 KEEL, On N WGH, 20-7 WYSL.

DOOBIES

Black Water (WB)

Add 38 KQWB, 24-17 WPEZ, 25-22 13Q, 30-20 KTKT, A WJBQ, 22-16 WBBF, Add 28 WSGA, On WISM, Add WORD, Add KRSP, Add KSJO.

CAT STEVENS "Ready" (A&M) Add WLPL, D 32 KEEL, add WMC, 38-32 KTLK, 40-35 KQWB,, 30 KUPD, D 36 WFOM, On WISM, D 34 WEEO

BILLY JOEL "The Entertainer" (Columbia) 20-16 WHBQ, 25-17 KQWB, add KJOY, on WIFE, add WRIE, on WORD, 29-21 KEEL, on N WGH.

PAUL MCCARTNEY "Sally G" (Apple) Add 28 WBBF, Add WROV, 24-19 WBG, 39-33 KYSN, 15-10 KING, Add KSJO, on WORD.

ELO "Can't Get It Out Of My Head" (UA) Add WBBQ, 29-19 KQWB, D 40 WKLO, D 30 WGRQ, Add KUPD, 39-32 WEEO.

MICHAEL HOLM "When A Child Is Born" (Mercury) Add 38 WCFL, add KJR, On WBBQ, 17-14 WKBW, on WRIE, add WORD.

SPLINTER "Costafine Town" (Dark Horse) D 30 WBBQ, on KJR, on KJOY, add KEEL, add KREM

AMERICA "Lonely People" (WB) Add 34 KEEL, add KTLK, D 22 WBBF, add WBG, add WORD.

ROY ROGERS "Hoppy, Gene And Me" (20th Century) Add KQV, add WBBQ, on WSAI, 30-26 WSGA, on KJOY.

GENE COTTON "Sunshine Roses" (Myrrh) On WRFC, 23-20 KQWB, on WORD, on KRSP.

JOE COCKER "You Are So Beautiful" (A&M) on K100, on KEZY 28-23 WSAI, on KYNO.

LOVE UNLIMITED "I Belong To You" (29th Century) 30-24 WLPL, 13-11 WPGC, 14-11 WBG, add WEEO.

TELLY SAVALAS "If" (MCA) D 30 WAKY, add WBG, 27-17 WKLO, 23-19 WORD.

SUGARLOAF "Don't Call Us" (Claridge) 9-5 KTLK, on KEEL, on WSAI, 26-25 KRSP.

JOHN DENVER "Sweet Surrender" (RCA) add KQV, 38-16 WRIE, 39-36 KTLK, 42-38 KDZA.

BROWNSVILLE STATION "MaMa Don't Allow..." (Big Tree) D 28 WYRE, on WKLO, D 29 WROV.

JAMES & BOBBY PURIFY "Do Your Thing" (Casablanca) On WKLO, on WRFC, on KJOY.



Radio & Records

THE INDUSTRY'S NEWSPAPER

TREND:

December 6, 1974

11/15 11/22 11/29

3	1	1	①	CARL DOUGLAS/Kung Fu Fighting (20th)
1	2	2	②	BILLY SWAN/I Can Help (Monument)
4	3	3	③	THREE DEGREES/When Will I See You Again (Phy/Int)
11	5	4	4	HARRY CHAPIN/Cat's In The Cradle (Elektra)
12	7	5	5	HELEN REDDY/Angie Baby (Capitol)
23	13	10	6	PAUL MCCARTNEY/Junior's Farm (Apple)
30	17	11	7	BARRY WHITE/You're The First, Last (20th)
-	31	13	⑧	ELTON JOHN/Lucy In The Sky With Diamonds (MCA)
5	8	8	9	BOBBY VINTON/My Melody Of Love (ABC)
13	9	9	10	B.T. EXPRESS/Do It (Scepter)
-	26	16	11	NEIL SEDEKA/Laughter In The Rain (Rocket)
6	6	6	12	NEIL DIAMOND/Longfellow Serenade (Columbia)
-	38	24	⑬	RINGO STARR/Only You (Apple)
19	18	17	14	AL GREEN/Sha-La-La (Hi)
-	24	20	⑮	JETHRO TULL/Bungle In The Jungle (Chrysalis)
2	4	7	16	BACHMAN-TURNER/You Ain't Seen Nothing Yet (Mercury)
-	-	29	⑰	CARPENTERS/Please Mr. Postman (A&M)
15	12	12	18	CHICAGO/Wishing You Were Here (Columbia)
8	11	15	19	CARL CARLTON/Everlasting Love (Back Beat)
-	33	26	20	STEVIE WONDER/Boogie On Reggae Woman (Tamla)
21	20	19	21	KIKI DEE BAND/I Got The Music In Me (Rocket)
10	16	18	22	JOHN LENNON/Whatever Gets You Through The Night (Apple)
26	25	25	23	RUFUS/You Got The Love (ABC)
-	-	-	⑳	BARRY MANILOW/Mandy (Bell)
7	10	14	25	AMERICA/Tin Man (WB)
-	30	33	㉑	POINTER SISTERS/Fairytale (Blue Thumb)
-	28	28	27	ROLLING STONES/Ain't Too Proud To Beg (Rolling Stones)
-	-	36	28	GLORIA GAYNOR/Never Can Say Goodbye (MGM)
14	15	22	29	JOHN DENVER/Back Home Again (RCA)
24	23	30	30	PAUL DAVIS/Ride 'Em Cowboy (Bang)
-	35	32	31	GLADYS KNIGHT & PIPS/I Feel A Song (Buddah)
-	-	34	32	LYNYRD SKYNYRD/Free Bird (MCA)
-	-	35	33	ELVIS PRESLEY/Promised Land (RCA)
25	22	27	34	PRELUDE/After The Goldrush (Island)
17	19	23	35	REUNION/Life Is A Rock (RCA)
9	15	21	36	CAROLE KING/Jazzman (Ode)
-	-	40	37	ANKA-COATES/One Man Woman, One Woman Man (UA)
-	-	38	38	J. GEILS BAND/Must Of Got Lost (Atlantic)
-	40	37	39	HUDSON BROS/So You Are A Star (Casablanca)
-	-	-	40	GEORGE HARRISON/Dark Horse (Apple)

National Request Tabulation

- | | |
|------------------|------------------|
| 1. CARL DOUGLAS | 6. JETHRO TULL |
| 2. HARRY CHAPIN | 7. CARPENTERS |
| 3. HELEN REDDY | 8. BILLY SWAN |
| 4. THREE DEGREES | 9. BARRY MANILOW |
| 5. ELTON JOHN | 10. NEIL SEDEKA |

OTHER STRONG ACTION:

PAUL DAVIS
BTO
LYNYRD SKYNYRD
B.T. EXPRESS

NOTE: Due to the Gavin schedule many of the attending PD's were not able to report this week. We have 75 percent of our normal stations reporting so please understand that some station action will be missing.

NEW & ACTIVE

The following records are listed in order by their activity

GRAND FUNK

Some Kind Of Wonderful (Capitol)

Strong action this week Add WQXI, Add WBGW, Add WRFC, Add 30 KTKT, Add WJBQ, On WMAK, On WFIL, Add KUPD, Add WFOM, Add WROV, On KJR, Add KREM, On WGN, Add WYRE.

LINDA RONSTADT

You're No Good (Capitol)

Add WRKO, Add KQWB, Add WAKY, On KING, On WRFC, On WMAK, D39 WFOM, Add WROV, D 28 KJOY, D 39 KYSN, On WRIE, D 30 WGNG, D 35 KTLK.

DISCO-TEX

Get Dancin' (Chelsea)

Add 16 WABC, 20-5 99X, Add WAKY, On WFIL, Add WGRQ, On KEZY, 26-25 WSAI, Add WYSL, Add WNOE, D 16 WVOV, Add WRFC, 33-22 WKLO.

AVE. WHITE BAND

Pick Up The Pieces (At)

Add 27 KHJ, Add 27 WRKO, Add 29 WAVZ, On WAKY, On WKLO, On WROV, On WISM, D 30 KJR, D 18 WLEE, Add 33 KEEL, On N WGH, 20-7 WYSL.

DOOBIES

Black Water (WB)

Add 38 KQWB, 24-17 WPEZ, 25-22 13Q, 30-20 KTKT, A WJBQ, 22-16 WBBF, Add 28 WSGA, On WISM, Add WORD, Add KRSP, Add KSJO.

CAT STEVENS "Ready" (A&M) Add WLPL, D 32 KEEL, add WMC, 38-32 KTLK, 40-35 KQWB,, 30 KUPD, D 36 WFOM, On WISM, D 34 WEEQ

BILLY JOEL "The Entertainer" (Columbia) 20-16 WHBQ, 25-17 KQWB, add KJOY, on WIFE, add WRIE, on WORD, 29-21 KEEL, on N WGH.

PAUL MCCARTNEY "Sally G" (Apple) Add 28 WBBF, Add WROV, 24-19 WBGW, 39-33 KYSN, 15-10 KING, Add KSJO, on WORD.

ELO "Can't Get It Out Of My Head" (UA) Add WBBQ, 29-19 KQWB, D 40 WKLO, D 30 WGRQ, Add KUPD, 39-32 WEEQ.

MICHAEL HOLM "When A Child Is Born" (Mercury) Add 38 WCFL, add KJR, On WBBQ, 17-14 WKBW, on WRIE, add WORD.

SPLINTER "Costafine Town" (Dark Horse) D 30 WBBQ, on KJR, on KJOY, add KEEL, add KREM

AMERICA "Lonely People" (WB) Add 34 KEEL, add KTLK, D 22 WBBF, add WBGW, add WORD.

ROY ROGERS "Hoppy, Gene And Me" (20th Century) Add KQV, add WBBQ, on WSAI, 30-26 WSGA, on KJOY.

GENE COTTON "Sunshine Roses" (Myrrh) On WRFC, 23-20 KQWB, on WORD, on KRSP.

JOE COCKER "You Are So Beautiful" (A&M) on K100, on KEZY 28-23 WSAI, on KYNO.

LOVE UNLIMITED "I Belong To You" (29th Century) 30-24 WLPL, 13-11 WPGC, 14-11 WBGW, add WEEQ.

TELLY SAVALAS "If" (MCA) D 30 WAKY, add WBGW 27-17 WKLO, 23-19 WORD.

SUGLARLOAF "Don't Call Us" (Claridge) 9-5 KTLK, on KEEL, on WSAI, 26-25 KRSP.

JOHN DENVER "Sweet Surrender" (RCA) add KQV, 38-16 WRIE, 39-36 KTLK, 42-38 KDZA.

BROWNSVILLE STATION "MaMa Don't Allow..." (Big Tree) D 28 WYRE, on WKLO, D 29 WROV.

JAMES & BOBBY PURIFY "Do Your Thing" (Casablanca) On WKLO, on WRFC, on KJOY.