

# ROCK AIRPLAY Monitor

• We Listen To Radio •

January 24, 1997 \$4.95 Volume 4 • No. 4

## ROCK HIGHLIGHTS

### MAINSTREAM

#1

**THE WALLFLOWERS**  
One Headlight (INTERSCOPE)

★ ★ ★ AIRPOWER ★ ★ ★

LIVE • *Lakini's Juice* (RADIOACTIVE/IMCA)  
SILVERCHAIR • *Abuse Me* (EPIC)  
COUNTING CROWS • *A Long December* (DGC/GEFFEN)

### NEW RELEASES

BENNET • *I Hate My Family* (ROADRUNNER)  
BIG HEAD TODD & THE MONSTERS • *Resignation Superman* (REVOLUTION)  
THE CLARKS • *Caroline* (WAY COOL MUSIC/IMCA)  
DC TALK • *Jesus Freak* (VIRGIN)  
DOWNSET • *Pocket Full Of Fatcaps* (MERCURY)  
FLUFFY • *Black Eye* (THE ENCLAVE)  
JONNY LANG • *Lie To Me* (A&M)  
MOBY • *That's When I Reach For My Revolver* (ELEKTRA/EEG)  
PROTEIN • *My Blood* (WORK)  
SCREAMING TREES • *Traveler* (EPIC)  
STORYVILLE • *Blind Side* (CODE BLUE/ATLANTIC)  
THIRD DAY • *Nothing At All* (SILVERTONE)  
TONIC • *Casual Affair* (POLYDOR/A&M)  
TOOL • *H.* (ZOO)  
VALLEJO • *Just Another Day* (IMI/TVT)

### MODERN

#1

**U2**  
Discotheque (ISLAND)

★ ★ ★ AIRPOWER ★ ★ ★

LIVE • *Lakini's Juice* (RADIOACTIVE/IMCA)

### NEW RELEASES

TORI AMOS • *Silent All These Years* (ATLANTIC)  
BENNET • *I Hate My Family* (ROADRUNNER)  
DC TALK • *Jesus Freak* (VIRGIN)  
ENORMOUS • *Sweet Is* (A&M)  
FLUFFY • *Black Eye* (THE ENCLAVE)  
THE GUF5 • *Smile* (ATLANTIC)  
JAMES • *She's A Star* (FONTANA/MERCURY)  
KORN • *A.D.I.D.A.S.* (IMMORTAL/EPIC)  
MOBY • *That's When I Reach For My Revolver* (ELEKTRA/EEG)  
NO DOUBT • *Excuse Me Mr.* (TRAUMA/INTERSCOPE)  
PRODIGY • *Firestarter* (MUTE-XL/MAVERICK/WARNER BROS.)  
PROTEIN • *My Blood* (WORK)  
REEL BIG FISH • *Sell Out* (MOJO/UNIVERSAL)  
VALLEJO • *Just Another Day* (IMI/TVT)

### TRIPLE-A

#1

**COUNTING CROWS**  
*A Long December* (DGC/GEFFEN)

★ ★ ★ AIRPOWER ★ ★ ★

NO RECORDS QUALIFIED FOR AIRPOWER THIS WEEK

## Are Some Modern Rockers Too Repetitive? Too Repetitive? Too Repetitive?

by Marc Schiffman

Modern rock has traditionally been seen as a time-spent-listening format, anathema to high rotations. But in recent months, modern outlets like WKQX (Q101) Chicago, CIMX (89X) Detroit, KEDJ Phoenix, and WXZZ (Z103) Lexington, Ky., have been spinning their heaviest tracks from the mid-50s on up, with CIMX reaching an amazing 89 plays on its No. 1 title last week.

Advocates of high spins say it provides a quicker research read, doesn't burn records faster, and allows stations to "own" their hits. Those opposed still consider high spins contrary to the nature of modern, with one PD calling it a desperation move for the format. And as fall Arbitrons come back, the results have shown the

opposite of what many expected in terms of cume and TSL.

"A lot of PDs and a lot of people in the industry forget how people use the radio," says WKQX PD Bill Gamble, who also consults 89X. Gamble doesn't believe the average listener sits down and says, "I'm going to listen to the radio now for two or three hours." In reality, especially with active formats, people listen little bits at a time. They're going to listen in the car. They're going to listen on the way to work. They're going to listen in the evening for a while."

Gamble sees the math this way: The average modern TSL sits in the 6½- to seven-hour range per week, or nearly an hour a day. "Now, let's be even more generous and say with their PI listeners, that's double . . . That's two

Continued on page 6



## ON FIRE AT:

Q101 #2 Phones  
99X Top 5 Phones  
WLUM Top 5 Phones  
X96 Top 5 Phones  
WENZ Top 5 Phones  
XHRM Top 5 Phones  
WBRU Top 5 Phones  
KXTE Top 5 Phones

WXRK  
LIVE 105  
WDRE  
WFXN  
WHFS  
KDGE  
KNDD  
KPNT  
WDGE  
KNNC  
WXDX  
KTCL  
91X  
WZRH  
KNRX  
WQBK

AND MANY  
MANY MORE!



go ahead, play with matches...



©1997 Maverick Recording Company

**big head todd & the monsters**

# RESIGNATION SUPERMAN

FROM THE NEW ALBUM **beautiful world**

Official Add Date January 28

**ROCK** Greatest Gainer / Most New Airplay  
Over 90 Early Adds, Including  
DC101, KBPI, KQRC, WDHA, KEGL, WTPA,  
KTXQ, WZZR, KISS, KLBJ, KILO, WMMR, KLOS  
Over 350 BDS Detections This Week

**MODERN ROCK**

35 Early Adds Including WDRE, WHYT  
WMMS, KXPB, WEND, KZON, KREV, KROX  
Over 240 BDS Detections This Week

**TRIPLE A**

(19) - (13) #3 Most New Stations/  
#6 Greatest Gainer Airplay New: WBOS  
WXRT#3 KFOG #6 KKZN #6  
KBCO#7 KSCA #8 WXRV #10

Big Head Todd and the Monsters on  
ROCKLINE Feb. 3 & Conan O'Brien Feb. 11  
Album Beautiful World in stores Feb. 11

PRODUCED BY Jerry Harrison for Construct Music, Inc.

MIXED BY Tom Lord-Alge

MANAGEMENT: Morris Bliesener & Associates, Denver, CO

 © 1997 Revolution. [www.revolution-online.com](http://www.revolution-online.com)



## RADIOACTIVE

### Phil Manning: Suddenly It's Seattle; Channel Z Finally Hits Kansas City

**M**odern KLYY (Y107) Los Angeles PD **Phil Manning** makes a surprise move to Seattle to rejoin Entercom as PD of modern **KNDD** (the End), replacing **Rick Lambert**. Additions to the Y107 air staff include production director **Chuck Doud** in early middays and **Chase** in overnights from afternoons at former modern **WRGX** (X107) Westchester, N.Y.

SBR Radio consultant **Dave Benson** fills triple-A **KBCO** Denver's PD seat, which was left vacant when **Mike O'Connor** took over at Jacor classic rock sister **KRFX** in September. O'Connor had been interim PD during the search.

Also at Jacor, modern **XETRA** (91X)/top 40 **KHTS** OM **Tim Dukes** is being reassigned to assist Jacor San Diego programming operations director **Jack Evans** with projects related to Jacor's pending San Diego acquisitions. Jones Satellite Rock Alternative OM **Bryan Schock** will join the company as 91X PD. Both changes take place at the end of February.

Less than two weeks after spinning off **KSLX** Phoenix to Sandusky, Nationwide is set to pick up crosstown classic hits outlet **KHTC-FM** (K-Hits 96.9) from Bonneville for \$34 million to pair with modern AC **KZZP**. Nationwide, meanwhile, took classical **KFSD** San Diego to classic hits last week as the Eagle under consultant **Larry Bruce**. With Bruce focusing his efforts on the Eagle, Larry Bruce Communications' **Elizabeth Burley** becomes president/COO of the consulting firm.

Album **KQRC** Kansas City will join the Heritage Media family, paired with classic rock **KCFX**. It's being traded to Journal Broadcasting for Heritage's Knoxville, Tenn., combo.

SFX has redone its deal with Secret Communications to no longer include Secret's two Cleveland stations. The purchase price for the remaining Pittsburgh and Indianapolis stations is now \$255 million, down from \$300 million.

After stunting with '80s gold as Star 96, complete with a Madonna Madness weekend, **KCHZ** Kansas City was set to flip to modern at press time as Channel Z95. Owner **Superfrank** is PD, with a staff built largely from former modern **WCHZ** Augusta, Ga., and sister modern **KTOZ** Springfield, Mo. **WCHZ** APD **Todd "Johnny Cage" Haller** is APD/middays. **KTOZ** APD **Julie Bahre** is MD/nights. **WCHZ** morning woman **Charlie Kale** is in mornings, co-hosted by production director **Drew Bennett**, last MD at modern **KNNC** Austin, Texas. **KTOZ** afternooner **George Spankmeister** takes afternoons at **KCHZ**; **Simon** from late nights at top 40 **WNKS** Charlotte, N.C., takes the same at **KCHZ**. **WCHZ** promotions director **the Great Zambini** takes the same at **KCHZ**. Album/classic rock combo **KEZO/KKCD** Omaha, Neb., **GSM** **Jay Cooper** takes the **KCHZ** GM/**GSM** seat.

Triple-A **KGMZ** Honolulu is now the duopoly sister of AC **KRTR** and began stunting Jan. 17, spotlighting the music and news of a specific year each day, starting with 1956. In other Honolulu news, classic rock **KKLV** PD **Bill Logan** exits.

Album **WTFX** Louisville, Ky., APD/afternoon driver **Future Bob** gets PD stripes.

Country **WYCD** Detroit **GSM** **Rob Striker** shifts to station manager at crosstown album **WWBR** (the Bear). He'd been consulting the Bear since November. Also, syndication of Bear morning man **Ted Nugent** is in the works.

Classic rock **WFXN** Huntington, W.Va., flips to mainstream rock as **WAMX** under station manager **Scott Miller**. **WFXN** had been simulcast on nearby **WMLV**, which remains classic rock and picks up the **WFXN** calls. Huntington's album rocker in the '70s and '80s had the **WAMX** calls.

Reno, Nev.'s crowded rock battle gets a new player this week, as Citadel's **KZSR**, formerly an AC outlet, flips to classic hits as the Hawk. **Rich**

West from country sister **KUBL** Salt Lake City is the new PD.

Premiere Radio Networks taps MTV executive VP of programming **Andy Schuon** for its board of directors.

Modern **KHTY** Santa Barbara, Calif., PD **Damion Young** resigns. Expect him to reappear in Los Angeles, replacing **Bruce St. James** as MD of top 40/rhythmic **KPWR** (Power 106).

Congrats to **Jane Bartsch**, GM of AC **WKJY** Long Island, N.Y., who becomes group manager for all of Barnstable's Long Island properties, including album **WRCN**.

With Gulf Coast Radio Partners picking up five Biloxi, Miss., stations (Rock Airplay Monitor, Jan. 17), the company's **Steve Fehder** becomes GM for album **WCPR** as Gulf Coast LMA's that property. Fehder's also doing management consulting with the other properties, including classic rock **WXRG**, pending the close of the deal.

AC **WINK** Fort Myers, Fla., station manager **Bob Grissinger** is now director of programming for **WINK** and its LMA partners, including classic rock **WARO**.

Former country **WKCW** Warrenton, Va., middayer **Rich Daniels** becomes PD of classic rock **WSRT** (92 Star) Hagerstown, Md., as **WSRT** OM/PD **Dennis Hughes** gets PD/mornings at duop sister country **WAYZ**. In other country/classic rock trading, **Randy Hood** leaves PD/mornings at classic rock **KLKX** Lancaster, Calif., for nights at country **KEKB** Grand Junction, Colo.

At modern AC **KYSR** (Star 98.7) Los Angeles, morning host **Mark Goodman** exits; evening guy **Larry Morgan** will co-host mornings with **Shirley**.

Soft AC **WYKZ** Savannah, Ga., PD **Margot Smith** joins co-owned modern outlet **WGRD** Grand Rapids, Mich., as MD/middays, replacing **Lee Ann Curtis**.

**Pam Newton** from **CKNW** Vancouver is now morning co-host at album **CKIK** (Rock 107) Calgary, Alberta, joining **Roger Rhodes**.

A week after its flip from top 40 to classic rock, **WNNJ-FM** Newton, N.J., unveils its air staff. PD **Chip Miller** will now do mornings, rather than afternoons. **Shelli Cole** joins for middays from P/T at top 40 **WBHT** Wilkes-Barre, Pa. MD **Vince Thomas**, originally slated for nights, takes afternoons, and **Mike Ragz** joins for overnights from weekends at co-owned top 40 **WSBG** Stroudsburg, Pa.

With album **WDHA** Dover, N.J., APD/MD/night jock **Kevin Thompson** exiting, middayer **Terrie Carr** assumes MD responsibilities, while morning man **Curtis Kay** moves to nights.

At Jones Satellite adult modern affiliate **WXZR** (Z98) New London, Conn., PD **Ron Michaels** is hosting afternoons and will do local breaks as **WXZR** picks up the syndicated **Bob and Sheri** morning show, starting February.

SFX ends its **JSA** with Triathlon over three Wichita, Kan., stations, including album **KRZZ**.

Former Z-Rock station **KRQR** Chico, Calif., sports a new lineup: syndicated **Mark and Brian** in mornings, MD **Sara Nevada** in middays/late nights, **Wiley Z. Coyote** in afternoons, **Wild Cat Joe Briery** in evenings, and **Raison Kane** in overnights. **KRQR** is consulted by **Dan Spice** of Lund Consultants.

**KJEE** Santa Barbara, Calif., ups assistant MD/p.m. driver **John Schroeder** to APD/production director.

Former classic rock **KGB** San Diego assistant promotions director **Lisa Arellano** is named promotions director for album **KLBJ** Austin, Texas.

Promotions director **Chris Miller** is upped to marketing director for sister stations album **KRZT**/top 40 **KBOS** Fresno, Calif.

At modern **WXEG** (the Edge) Dayton, Ohio, PD/early midday host **Jeff Stevens** and late-midday host **B.C.** swap shifts.

### Buzzard And Ezra



Elektra recording act Better Than Ezra held a meet-and-greet with 50 WMMS Cleveland listeners. Pictured, from left, are Better Than Ezra's Tom Drummond, WMMS' Sue Tyler, Better Than Ezra's Travis McNabb and Kevin Griffin, and WMMS' Jill Carsten and MD Matt Surrena.

## PERSONNEL FILE BY ANTHONY COLOMBO

### A&M Associated Appoints Barbis Prez

**J**ohn Barbis is named president of the newly created A&M Associated labels. Barbis, who will report to A&M CEO/chairman **Al Cafaro**, will be based in Los Angeles. A&M Associated will handle sales, marketing, and promotion for the Polydor and Rocket labels. Barbis was president of Island Records until October '96.

550 Music ups **Neda Leppard Tobin** to VP of rock promotion. She had been the label's senior director of pop promotion. Meanwhile, L.A. rep. **Chuck Field** climbs to associate director of national pop promotion.

Atlantic manager of hard rock promotion **Jon Nardachone** is upped to director of rock promotion, based in New York. He is a six-year label vet.

Arista appoints **Joe Reichling** regional director of West Coast promotion. He had been Atlantic's San Francisco local promotion manager.

Paradigm Music purchases New York-based indie Big Deal and will retain principals **Dean Brownrout** and **David Wolin** as co-presidents of the newly created Paradigm Associated Labels. Brownrout and Wolin will continue to oversee the day-to-day operations of Big Deal.

BMG has folded its Private Music label into Windham Hill as of Jan. 17. Although Private Music will still exist as a Windham Hill imprint, its 35-person staff will be drastically cut back.

Concrete alternative radio promotions person **Kalun Lee** joins Hybrid Recordings to spearhead radio promotion efforts.

**Gregg Miller** exits BDS. He is looking for opportunities and can be reached at 201-447-2497.

### Ghosts Of Holiday Shows Past



Sarah McLachlan, Republica, Gin Blossoms, and Barenaked Ladies helped modern **WPLY** (Y100) Philadelphia celebrate the holidays last month. Pictured, from left, are MD **Doug Kubinski**, McLachlan, PD **Chuck Tisa**, and marketing director **Maggie McAleer**.

## ON THE AIR

### NEW STATIONS AND OTHER REPORTER CHANGES FROM BDS & AIRPLAY MONITOR

Effective this week, **WRNR** Annapolis, Md., is temporarily removed from the triple-A panel due to technical problems. There are now 26 triple-A reporters.



## BARNESTORMING BY KEN BARNES

### Rock Formats: No Women Aloud

All those "angry young women" you've been reading about as a dominant modern rock trend have something new to be pissed off about: They didn't make much impact in breaking down the format's traditional male-vocal bias. Songs sung by women (solo artists or lead singers of groups) added up to 20% of the 1996 Modern Rock Tracks top 100. That compares to 21% in 1995. Checking another year at random (1992), I found the same result—21% of that year's top hits were sung by women.

While 20% is a much better showing for women in modern than in mainstream rock, which managed a lofty 4% in '96, it's drastically lower than the top 40 figures: 50% for both mainstream and rhythm-crossover, which would indicate that in modern rock the emphasis is on the second word, that the format has more in common with its mainstream rock brethren than the pop side.

Just as with the mainstreamers, male groups are by far the dominant force in the modern world, accounting for 78% of the top hits. There were only two male solo artists in the whole batch, and one of them masquerades under a group identity (the undercapitalized *dog's eye view*). By contrast, there were 11 female solo acts represented. The male soloist dropoff is not drastic compared to '95, when they made up 5% of the total, but in '92 they accounted for 16%. Nowadays, it appears that if you're a male vocalist and you're not *Beck*, you'd best join a band or make one up.

Whereas if you're a female vocalist and have ambitions in the mainstream rock field, you'd better consider the alternatives. Four percent is a pretty dismal showing for the gender (especially considering the first female vocalist doesn't show up till No. 69), but it's actually an improvement over '95, when the representation was 3%. And for the better part of the last decade, that's the general receptivity level of the rock format toward women. Rock has become a format

by guys for guys, and no other guise will do. Here's a look at the female-vocal percentages for the last two years and five, 10, and 15 years ago:

#### ROCK FEMALE VOCAL PERCENTAGES

| Year  | Percentage |
|-------|------------|
| 1996: | 4%         |
| 1995: | 3%         |
| 1991: | 2%         |
| 1986: | 8%         |
| 1981: | 9%         |

While 1991 is probably the all-time low-water mark, I recall that in some of the trailblazing work on gender stratifications in contemporary radio formats (most of which, I point out with all due modesty—namely, none—was compiled by me), the downsizing began as early as 1988, when the percentage dropped in half, to 3% from '87's 6%.

The key factor here appears to be the almost total disappearance of groups with female lead singers from the rock charts. *Heart* and *Fleetwood Mac* used to be format staples, but in the three years of the '90s that I looked at, not a single female-fronted group showed up. (By contrast, in '81 and '86, there were more female group vocals than solo vocals.) And all that sharing of the last couple of years between modern and mainstream rock distinctly does not include the *Cranberries/Elastica/No Doubt* axis.

Which indicates that modern rockers wishing to distinguish themselves from their mainstream competitors without jumping headlong into the techno realm can accomplish their goal safely through playing female vocals—it doesn't seem likely that the mainstreamers will try co-opting those songs in the near future.

*Ken Barnes is editor of Music Central, a multi-faceted music Web site at musiccentral.msn.com. Contact him via E-mail at a-kenba.microsoft.com or call 206-703-6983, and keep him posted on product and projects at 6204 144th Ave. NE, Redmond, Wash. 98052.*

### A Luscious Interview



SW Networks producer Darren Davis and reporter Barry Jeckell teamed up for an interview with Luscious Jackson's Vivian Trimble and Gabby Glaser. Embracing the photo op, from left, are Davis, Trimble, Glaser, and Jeckell.



## CHEET SHEET BY MARK MARONE

### Suicide Machines: Detroit Skank City

Traditionally, high-energy ska/punk, regardless of radio visibility, has always attracted legions of pogoing skankers, skate punks, and stylish hipsters to the dance floor during its adrenaline-affected affairs. These are the kinds of gatherings the *Suicide Machines* are familiar with, despite the fact that the average age of the band's members is only 22. In fact, in a page right out of the old DIY book, the band booked its own tours and, as a result of these out-of-town shows, was asked to be on a punk compilation album that led them to Hollywood Records. And for the *Suicide Machines*, the best thing about signing with a label is that they can tour nonstop.

Hailing from the Detroit suburbs of Livonia and Redford, Mich., the *Suicide Machines* came together when *Dan Suicide Machine* (who is suspected of having had a different name then) and singer *Jason Navarro* hooked up in 1992. Drummer *Derek Grant* knew Navarro from high school, while bass player *Royce Nunley* was as familiar with the rest of the guys as they were with him, having shared the same bills around town in various local bands.

The band's members originally settled on *Jack Keavorkian & the Suicide Machines* but soon dropped the controversial doctor's name when misinformed spectacle-seekers came to their gigs. With their leaner name came opportunities in the form of key opening slots for *Mighty Mighty Boss-tones* and *Rancid* in Detroit.

Although the *Suicide Machines* play a similar ska/punk style to those bands, the band's members don't think of themselves as belonging to a specific genre. "People consider us a punk/ska band, but there's a lot of straight-up rock'n'roll elements in our songs. There's some hardcore influences in there," says Grant, who credits his older brother's friend with his initiation to punk via a *Misfits* album. "We were all pretty big fans of NYC hardcore, like *Gorilla Biscuits*, *Youth Of Today*, *Cro-Mags*, *Agnostic Front*, and *Murphy's Law*. So it's almost like the music that we create when we combine our talents or whatever [winds up being referred to only as punk]."

However stifling the band's members may consider the ska/punk tag, that reputation led the *Suicide Machines* to Hollywood in May 1995. Following a performance in San Francisco, they were approached by the manager of local band the *Rudiments* to contribute material to a compilation. The manager liked their demos so much that he asked if they would do a split album with the *Rudiments* instead. "Skank For Brains," on *Beach Recordings*, wound up being 12 tracks of each band; it was released in March 1995.

The *Suicide Machines* say they received no proceeds from the project or, more important at the time, many CDs to sell out of the back of the van. "We didn't care so much about getting royalties," says the 19-year-old Grant. But they did feel they were bad when they were only given 100 copies for themselves. Fortunately, this was the album that Hollywood A&R rep and producer *Julian Raymond* heard. Raymond recorded the band's debut album in 14 days and called in mixer *Jerry Fin*, who had worked with *Green Day* and *Rancid*.

Like other punk bands, the *Suicide Machines* hope to shed light on causes about which they feel strongly. Grant says the band's members are particularly taken with the the spirit of unity among youth, as exemplified by their involvement with the ARA (Anti-Racist Action), which hands out pamphlets and shirts at their shows. "Right now, we're working on getting something together for our next tour where they can come out to all of our shows and set up a table." Additionally, Grant has been operating *Old Skool Records*, which put out the band's original demos, for more than five years. "I keep that going and give bands that I like an opportunity to put stuff out," he says. "We do distribution on the road. I buy CDs from *Mordam Records* and a few other other distributors, take CDs out, and try and get some of the kids that come to our shows into different types of music."

On the road since the record's release last May, the *Suicide Machines* will work up a sweat next month touring with the *Descendents*. Grant loves road life, except "something always gets broken, unfortunately."

EDITOR: SEAN ROSS  
 MANAGING EDITOR: MARC SCHIFFMAN  
 MAINSTREAM ROCK/TRIPLE A CHART MANAGER: ANTHONY COLOMBO  
 MODERN ROCK CHART MANAGER: MARK MARONE  
 WRITER/REPORTER: DANA HALL  
 CONTRIBUTORS: KEN BARNES, HESTON HOSTEN  
 CHART PRODUCTION MANAGER: MICHAEL CUSSON  
 ASST. CHART PRODUCTION MANAGER: ALEX VITOULOS  
 EDITORIAL PRODUCTION MANAGER: BARRY BISHIN  
 ASSOC. EDITORIAL PRODUCTION MANAGER: MARCIA REPINSKI  
 EDITORIAL PRODUCTION: MADELINE CARROLL, SUSAN CHICOLA,  
 MARC GIAQUINTO, SARAH JOHNSON, MARIA MANLICIC  
 COPY EDITOR: CARL ROSEN  
 ADVERTISING PRODUCTION MANAGER: LYDIA MIKULKO  
 ADVERTISING PRODUCTION ASST.: CINDIE WEISS  
 ADVERTISING ART DIRECTOR: RAY CARLSON

NATIONAL ADVERTISING MANAGER: JON GUYN  
 ADVERTISING SALES: JACK FULMER, GARY NUEL  
 CLASSIFIED ADVERTISING: LAURA RIVCHUN  
 SALES ASSISTANTS: EVELYN ASZODI, ERICA BENGTON,  
 FRED DAHLQVIST, ALYSE ZIGMAN

EDITORIAL ADVISER: TIMOTHY WHITE  
 PRODUCTION DIRECTOR: MARIE GOMBERT  
 DIRECTOR OF MARKETING: ELISSA TOMASETTI  
 CIRCULATION MANAGER: JEANNE JAMIN



PRESIDENT: HOWARD LANDER  
 SENIOR VP/GENERAL COUNSEL: GEORGINA CHALLIS  
 VICE PRESIDENT: ADAM WHITE  
 DIRECTOR OF STRATEGIC DEVELOPMENT: KEN SCHLAGER  
 BUSINESS MANAGER: JOELLEN SOMMER

©1997 BPI Communications  
 1515 Broadway, New York, NY 10036 212-764-7300  
 For subscriptions call: 800-722-2346

**NINE INCH NAILS "THE PERFECT DRUG"**  
**PRODUCED BY TRENT REZNOR**

**FROM THE NOTHING/INTERSCOPE SOUNDTRACK "LOST HIGHWAY"**  
**SOUNDTRACK PRODUCED BY TRENT REZNOR**  
**EXECUTIVE PRODUCED BY DAVID LYNCH**



**MOST ADDED!**  
**BIG PHONES EVERYWHERE!**



**HEAVY**

**ALBUM IN STORES 2/18**

**Interscope**

©1996 LOST HIGHWAY PRODUCTIONS, INC. AND THREE PICTURES PRODUCTION COMPANY. ALL RIGHTS RESERVED. FOR PROMOTIONAL USE ONLY. NOT FOR SALE. INTD/C-90096.



## Are Some Modern Rockers Too Repetitive? Too Repetitive? Too Repetitive?

Continued from page 1

hours a day. Most radio stations are rotating their records once every 4½ hours . . . We're hiding songs that they want to hear."

Adds WXZZ PD Dennis Dillon, "There's a reason why these songs are the most-played songs in the country, why they are the biggest-selling records in the country. That's because people like them. They not only like hearing them on the radio, but they like them enough to go out and spend their money on them . . . In my desire to provide a service, it only behooves me to give them the records that they're buying—the records that they love enough to spend their own money on—as much as I can."

CIMX program manager Murray Brookshaw says, "The best way to own a record that we wanted to own was to spin it more than anybody else. So, to be aggressive and to go out ahead and first on records was our stick that we could wield."

Gamble says that lower spins mean stations have to fill slots with mediocre product. And not only new songs. "There's a lot of bad old songs that end up filling up slots on the station," he says.

### FASTER RECOGNITION, LESS BURN

One measurable benefit of higher spins is that songs are familiar enough to go into call-out faster: "If you believe that you need at least 150 to 200 exposures to get a real read on a record, this helps us get there quicker. So, instead of languishing with a song for six weeks, thinking, 'Well, maybe it's going to be there and we're not really sure and the national picture's slow to develop and it's not requesting and the retail's soft, but we think it may be a call-out hit,' hopefully, we can shorten that time frame. And shortening that time frame ultimately makes more slots available for more new music," says Gamble.

Although the exposure is quicker, the high-rotation programmers we spoke with believe that pounding a song doesn't hasten burnout.

Part of that stems from market exclusivity. "Burn is still a function of people listening to more than one radio station," says Gamble. "We played the 311 record 650 to 670 times. It's still fine, but that's because we were the only people playing it."

He adds, "Sometimes burn's not as important as we think it may be. If people are still saying they like it, but they're tired of it, a lot of us tend to forget they're still saying they like it."

Gamble discounts listener complaints of repetition. "Our contention is that those are the people, especially in a competitive environment, that are going to complain anyway," he says. "Different people call them different names, as far as research goes, [such as] 'Hate Alls.' There are certain people that are going to complain if you repeat a song once during the day. No one ever complains about hearing their favorite song too much."

KEDJ PD Shellie Hart says, "I can be playing No Doubt's 'Don't Speak,' finish playing it, and five minutes later, somebody else is calling, wanting to hear it again. You can't spin the hits fast enough." Hart, who tries to keep the most-played records fresh by using live and acoustic versions, says that in "Don't Speak's" ninth week as a power with 65 spins a week, it's still her No. 1 testing record, with "zero burn."

In fact, Hart claims burn is never a factor in pulling a record from power, only another record coming up to displace it. For instance, she says, "the only record that was able to slow down 'Bulls On Parade' was Bush's 'Swallowed.' We spin records real fast to take ownership. And if it's the right record, and it becomes a huge hit, we've done our job. Why should we let that go? Something just as big is going to have to come through and knock that record down."

Dillon maintains that listeners do not pick up on a song as fast as programmers think. "So, I'm not opposed to playing a hit record more than I should," he says. "I'm willing to take that risk. I would rather play a record that I'm sure is a hit, as opposed to one that I'm not so sure is."

The key is to make sure the songs are major hits. "People complain when they hear songs that they don't like too much," says Gamble. "That's the inherent danger . . . The downside is you've got a nuclear weapon here. You just want to make

sure you point it in the right direction."

### WE ALMOST LOST DETROIT?

Not surprisingly, WHYT (the Planet) Detroit PD Garrett Michaels doesn't feel that warhead is being deployed correctly. CIMX, he says, will "still play a bunch of unfamiliar new [songs] that aren't necessarily hits. You can bang records all you want, but unless they're familiar and they're hits, it's not going to do you any good . . . I just think that's a little dangerous."

Brookshaw defends the 89X decision-making process. He says, "You put a lot of thought into it. It's not something that you just do willy nilly." He points to Cake's "The Distance." "We thought it was something that the younger end of our demo really wanted to hear at that particular time. So, bang, we put it in and spun it 85 times a week, because we felt it was a sound that would give us something interesting."

One of the ironies of the Detroit battle is that WHYT is known as one of modern's more-top 40-leaning stations. But Michaels looks back to his top 40 days when heavy repetition "was done a lot in quite a few places, and it didn't seem to help." While Michaels says he understands the philosophy of listeners tuning in to a station for a short amount of time, he says, "I'm old-fashioned in that I want to keep people listening as long as I can. And I came from doing CHR, and one of the big complaints about CHR was repetition of music . . . In any niche format, you've got to pursue TSL."

Michaels sees the high-spin phenomenon as "some people out there who are grasping at straws, trying to figure out how come the format's not on fire like it was before. When that happens, people tend to experiment. I have a feeling that there's no clear-cut, for-sure reason why people are doing it. They're just trying something different, because, hey, what a lot of people are doing right now isn't exactly kicking and working."

A lot of other top 40-to-modern converts opt for a more conventional spin count. KITS San Francisco's Richard Sands, one of the first to make the transition, now tops out at about 31 spins. WNVE Rochester, N.Y., PD Erick Anderson was at 43 plays on his No. 1 record last week. WGRD Grand Rapids, Mich., PD Allan Fee is in the mid-30s.

WMRQ Hartford, Conn., PD Jay Beau Jones (see Rock Godz, this page) believes that "modern rock listeners use their stations different than CHR-cuming stations . . . We've never had the need to do it. Repetition was never an issue with us."

### THE SCORES SO FAR

Looking at the fall numbers in Chicago and Detroit, WKQX (3.5-3.1), WHYT (2.8-2.1), and CIMX (1.9-1.8) were all off 12-plus. KEDJ was off 4.0-3.3. KEDGE Dallas, a longtime advocate of top 40 formatics, was off 3.1-2.5.

The irony is that the technique that was expected to boost come and crash TSL had actually worked the other way around in some cases. On the Detroit battlefield, WHYT's 12-plus weekly TSL was down to 3:45 hours, while CIMX bumped up to 4:30. Both stations lost come, with WHYT beating CIMX on that front.

WKQX's TSL was down to 5:15 overall, but among 18-34 men, it clocked in at 6:30, up 45 minutes over the last book for its highest TSL for that demo in the past year. Its 12-plus come, however, had dropped from just over a million to 927,800. Come among 18-34 men for the whole week was also off, 296,400 to 248,400.

For Gamble, the jury's still out. "One of the things that we're all guilty of is we try something, we wait a month, [and then we say], 'How come we're not a 12 share? I guess it must not work.' It takes a long time. The goal of this is to get people saying, 'Oh boy. You guys are playing all great songs.'"

Looking to last month, Gamble says, "Going through the holidays, it was a pretty good feeling seeing Garbage, Bush, and the Cardigans as our powers and the top three retail records on the planet . . . It gives you a secure feeling. It's like, 'We can't be screwing up too bad here.'"

## ROCK GODZ

### Jay Beau Jones Blows Dust Off Modern WMRQ Hartford, Raises Its Numbers

**T**op 40 WKSS Hartford, Conn., PD Jay Beau Jones says his first task upon adding PD duties at modern duopoly partner WMRQ (Radio 104) was to "blow off the dust left from the previous management [by] making the station active again musically, promotionally, and through production." And in the fall Arbitron, WMRQ rose 5.3-6.2, up from a 5.6 a year ago.

When Jones added PD duties at WMRQ, he'd already been in the market five years at the helm of WKSS, a station that was eventually folded into the SFX empire. He had worked with other top 40-to-modern converts, including WNNX (99X) Atlanta (PD Brian Phillips) and modern WXRK New York (PD Steve Kingston).

Jones says, "Ask any student of radio about stations that Steve and Brian have done, and they'll tell you stories of great promotions [and]



**Jay Beau Jones**  
Program Director  
WMRQ Hartford, Conn.

*'I can hire the right people and let them do the job'*

wonderful morning events . . . Theater of the mind is a major part of both of their agendas."

To that end, one of Jones' first moves was to add Wendal, a character production whiz Keith Eubanks first did on 99X that Jones calls a "radio version of the MTV taxi-driver guy." Wendal appears in on-air promos and comes off as "a member of the staff who's kind of a goofball and is always offbeat, always apologizing for being late and being incompetent," Jones says. He was first introduced to the audience in a toy-drive promotion. Wendal was on-air as one of Santa's elves urging listeners to bring toys to the drop-off point, as "Santa's getting fat and may not make it for Christmas." In his latest misadventure, the hapless assistant is "on the other end of the globe as a Radio 104 archeologist, trying to discover the meaning of 'Lakini's Juice,' —the new Live [cut]," says Jones.

For Wendal bits, Jones provides Eubanks with a theme, "and he just goes off," says Jones. "I don't fax him any copy. He just gives me five or 10 wild tracks that we drop into the promos." WMRQ uses Wendal bits any time it launches an element. "By adding Wendal, we've created an immediate sense of fun and animation on the station without leaving the image [or] getting too obscure," Jones says, "which counterbalances the harder edges of the format."

Musically, Jones says, Radio 104 "was never terribly off track. Robert Benjamin of [sister WHFS Washington, D.C.] helped me keep it on track, and my former APD Skip Isley [now programming modern KTEG Albuquerque, N.M.] was a tremendous help as well."

"Radio 104 is a bit closer to the core than most of the alternatives you see in Monitor. It was born a little harder, a little crunchier a few years ago, and we tried to stay as close to those roots as much as possible. We play Sheryl Crow, but it's carefully clapped."

Here's a sample hour on Radio 104: Smashing Pumpkins, "Disarm"; Sheryl Crow, "If It

Makes You Happy"; Everclear, "Santa Monica"; Bush, "Greedy Fly"; U2, "Discotheque"; 311, "Don't Stay Home"; Sublime, "Santeria"; Nirvana, "Lithium"; Stone Temple Pilots, "Interstate Love Song"; Depeche Mode, "Barrel Of A Gun"; Wallflowers, "6th Avenue Heartache"; Garbage, "#1 Crush"; and Beck, "Where It's At."

WKSS draws on its rhythmic top 40 roots, and therefore, Jones says, it's "very late on alternative hit product and doesn't play it for long, once its current shelf life goes away . . . and it depends on the track we're talking about. You'll never hear Bush on Kiss 95.7."

While WMRQ and WKSS stay out of each other's way musically, Jones feels top 40 missed a chance to take the wind out of modern's sails. Citing Pearl Jam, Live, and Bush, Jones says, "The first level of those acts were killer, unbelievable songs that CHR could not play—at least we thought. I believe the downside of alternative would have happened 1½ to 2 years ago if CHR woke up when Hootie and Alanis arrived. CHR guys like me were saying, 'We can't play that. That's alternative.' In fact, Hootie & the Blowfish was just great pop music, which is now heard on AC. If CHR embraced that tier of alternative acts, even Smashing Pumpkins, CHR would have made a dent earlier in alternative."

WKSS has recently found itself behind modern-leaning hot AC rival WTIC-FM for the first time in several years. Despite this, Jones says, there's no attempt to use WMRQ to keep WTIC-FM under control. "It's too early in the game to start trying to use one station to be a blocker for another. I will say this: After TIC spent \$200,000 on their new morning show on TV, they still came out No. 2 18-34, behind MRQ. So the strength of MRQ alone, without even trying to point it in any particular direction, was strong enough to knock TIC off in one book . . . Anytime I could beat TIC, it's an added bonus."

Splitting his time between WMRQ and WKSS, which are located in buildings 15 minutes apart, Jones is careful to give each station equal time. "I took on this challenge because I wanted to learn how to delegate duties more," he says. "I wanted to grow as a manager. And I felt the only way I was going to do it was if I was thrown in the water and forced to swim. It's made me trust my staff more. It's given me a new kind of confidence—that I can hire the right people and let them do the job."

Some of those new hires include MD Dave Hill, whom Jones picked from the 99X music department and sees as a star in the making. He recently installed Jeremy "Pike" Peterson in nights from WXRK. Jones says he "brings a sense of controlled chaos to the airwaves."

With WMRQ in fifth place 12-plus, the closest current-based rock signal is album WCCC, in 11th place. Jones says WCCC's carrying Howard Stern in the mornings is its strongest suit, so he casts his Jake and Beth morning show as the "anti-Stern." Jones says, "We play much more music in the morning show than, basically, any morning show in Connecticut. They're much more lifestyle, much more playful . . . Jake has a very funny wit and brings an acerbic tone without sounding like a dick . . . Beth came from our AM news station WPOP and brings a great female point of view, strong news head, and great information on the artists."

Now overseeing the air staffs of two stations, Jones says he is presented with new challenges. "It's double the team. The blueprints for both teams have to be a bit clearer and have to be updated from time to time, but I believe it can be done."

MARC SCHIFFMAN



# "volcano girls"



the first track and video  
from the new album

*eight arms to hold you*

produced by bob rock

Most added everywhere!  
Official impact date January 28th



©1997 Outpost Recordings, Management & Print

World Radio History



# FALL 1996 ARBITRONS

12-plus overall average quarter hour shares. (#) indicates Arbitron market rank. Copyright 1997, Arbitron Ratings Co. May not be quoted or reproduced without the prior written permission of Arbitron.

Call Format '95 '96 '96 '96 '96

## DALLAS/FT. WORTH—(7)

|              |           |     |     |     |     |     |
|--------------|-----------|-----|-----|-----|-----|-----|
| KDA-FM       | R&B       | 4.6 | 5.4 | 5.7 | 6.3 | 6.2 |
| KHKS         | top 40    | 5.6 | 5.7 | 6.2 | 5.9 | 6.1 |
| KVIL         | AC        | 5.6 | 5.4 | 5.2 | 4.7 | 6.0 |
| WBAP         | N/T       | 4.7 | 4.6 | 4.9 | 5.4 | 4.9 |
| KSCS         | country   | 5.5 | 5.0 | 6.2 | 4.9 | 4.9 |
| KEGL         | album     | 3.9 | 4.6 | 3.8 | 3.8 | 4.0 |
| KPLX         | country   | 3.9 | 4.4 | 4.3 | 3.8 | 4.0 |
| KRLD         | N/T       | 3.8 | 3.7 | 4.1 | 4.3 | 4.0 |
| KYNG         | country   | 4.8 | 3.9 | 4.9 | 4.8 | 3.8 |
| KOAI         | jazz      | 4.2 | 3.6 | 3.4 | 3.5 | 3.7 |
| KDMX         | AC        | 2.7 | 2.8 | 3.9 | 5.4 | 3.7 |
| KLUV         | oldies    | 3.9 | 4.0 | 3.4 | 4.2 | 3.6 |
| KRBV         | R&B adult | 5.0 | 4.2 | 4.2 | 4.6 | 3.6 |
| KZPS         | cls rock  | 2.8 | 2.2 | 2.6 | 2.5 | 3.0 |
| WRR          | classical | 1.8 | 2.1 | 2.2 | 2.7 | 2.8 |
| KTXQ         | album     | 3.3 | 4.0 | 2.7 | 2.7 | 2.7 |
| KDGE         | modern    | 3.5 | 3.6 | 3.2 | 3.1 | 2.5 |
| KLTY         | religious | 2.7 | 2.6 | 2.9 | 3.3 | 2.5 |
| KLIF         | N/T       | 2.5 | 2.3 | 2.6 | 2.3 | 2.4 |
| KTKC         | sports    | 2.0 | 2.1 | 2.3 | 1.8 | 2.4 |
| KESS         | Spanish   | 1.1 | 1.7 | 1.7 | 1.8 | 2.2 |
| KRRV         | cls rock  | 2.6 | 2.9 | 2.2 | 2.7 | 2.1 |
| KHCK/KICI-FM | Spanish   | 2.0 | 1.6 | 1.6 | 1.3 | 1.6 |
| KHVN         | religious | 1.6 | 1.9 | 1.2 | 1.5 | 1.5 |
| KRNB         | R&B adult | —   | —   | —   | —   | 1.2 |
| KAMM         | adult std | —   | 1.5 | 1.2 | —   | —   |
| KKOA-AM      | R&B adult | 1.1 | 1.1 | 1.0 | 1.3 | 1.1 |

## HOUSTON—(9)

|            |           |     |     |     |     |     |
|------------|-----------|-----|-----|-----|-----|-----|
| KBBX       | R&B       | 6.7 | 7.2 | 7.5 | 7.0 | 7.7 |
| KHMX       | AC        | 4.5 | 4.6 | 4.9 | 5.3 | 5.9 |
| KODA       | AC        | 4.0 | 4.0 | 4.5 | 5.4 | 5.8 |
| KRBE       | top 40    | 4.6 | 4.2 | 4.5 | 5.4 | 5.8 |
| KMJQ       | R&B adult | 5.7 | 5.2 | 6.0 | 5.4 | 5.3 |
| KQOE       | adult std | 5.6 | 5.0 | 5.1 | 4.1 | 5.2 |
| KKBA-AM-FM | country   | 5.2 | 5.4 | 5.3 | 4.7 | 4.7 |
| KTRH       | N/T       | 4.3 | 4.9 | 4.6 | 3.7 | 4.6 |
| KILT-FM    | country   | 6.2 | 5.6 | 4.6 | 5.9 | 4.5 |
| KLOE       | N/T       | 4.1 | 4.0 | 4.3 | 3.6 | 3.9 |
| KPRC       | N/T       | 3.0 | 2.8 | 3.3 | 3.1 | 3.8 |
| KTRZ       | modern    | 3.1 | 2.8 | 3.1 | 3.7 | 3.7 |
| KLOL       | album     | 3.5 | 3.4 | 3.3 | 3.8 | 3.6 |
| KRKR       | cls rock  | 2.4 | 3.5 | 3.3 | 3.7 | 3.4 |
| KLTK/KLTO  | Spanish   | 3.4 | 2.7 | 3.1 | 3.9 | 3.3 |
| KIKM-FM    | country   | 3.1 | 3.3 | 3.5 | 3.6 | 3.1 |
| KQOK       | Spanish   | 2.3 | 2.5 | 2.7 | 2.5 | 2.5 |
| KHYS       | jazz      | 2.1 | 1.8 | 1.8 | 1.5 | 1.2 |
| KLAT       | Spanish   | 1.3 | 1.7 | 1.3 | 1.5 | 1.0 |
| KSEY       | N/T       | —   | —   | —   | —   | 1.0 |
| KOTJ       | Spanish   | 1.6 | 1.2 | 1.2 | 1.1 | 1.0 |

## MIAMI—(11)

|              |               |     |     |     |     |     |
|--------------|---------------|-----|-----|-----|-----|-----|
| WPOW         | top 40/rhythm | 4.3 | 5.2 | 5.6 | 4.9 | 5.7 |
| WEOR         | R&B           | 6.2 | 6.0 | 5.7 | 5.9 | 5.5 |
| WQXT         | R&B adult     | 5.4 | 5.1 | 4.3 | 5.3 | 4.8 |
| WRMA         | Spanish       | 6.3 | 4.8 | 5.4 | 4.3 | 4.5 |
| WAMR-FM      | Spanish       | 4.7 | 5.2 | 4.6 | 5.6 | 4.4 |
| WLYT         | Spanish       | 5.3 | 5.1 | 5.4 | 5.4 | 4.4 |
| WYOJ         | Spanish       | 4.1 | 3.0 | 3.2 | 3.0 | 4.4 |
| WQOI         | top 40        | 4.0 | 4.5 | 4.0 | 4.7 | 3.9 |
| WYHY         | top 40        | 3.5 | 3.6 | 4.0 | 3.8 | 3.5 |
| WMIJ         | oldies        | 3.1 | 3.9 | 3.3 | 3.9 | 3.5 |
| WIDQ         | N/T           | 3.4 | 3.4 | 2.6 | 3.4 | 3.3 |
| WZTA         | album         | 3.2 | 3.3 | 3.7 | 3.9 | 3.3 |
| WKIS         | country       | 3.3 | 3.6 | 3.3 | 3.6 | 3.1 |
| WLVE         | jazz          | 2.8 | 3.3 | 3.5 | 3.0 | 3.1 |
| WCMQ-FM/WZMQ | Spanish       | 1.6 | 1.5 | 2.1 | 2.2 | 2.8 |
| WFLC         | AC            | 3.6 | 3.3 | 3.4 | 2.7 | 2.8 |
| WTFM         | classical     | 3.1 | 3.2 | 3.1 | 2.7 | 2.7 |
| WQBA-AM      | Spanish       | 2.5 | 2.6 | 2.2 | 2.3 | 2.5 |
| WBG6         | cls rock      | 2.6 | 2.2 | 2.3 | 2.4 | 2.4 |
| WCMQ-AM/WSPK | Spanish       | 2.9 | 2.2 | 2.7 | 2.1 | 2.0 |
| WINZ         | N/T           | 2.1 | 1.9 | 1.7 | 1.5 | 2.0 |
| WPLL         | AC            | 2.0 | 1.6 | 2.1 | 2.5 | 2.0 |
| WQAM         | sports        | 1.4 | 1.8 | 1.7 | 2.3 | 1.8 |
| WSUA         | Spanish       | 1.0 | 1.7 | 1.7 | 1.3 | 1.7 |
| WRTQ         | Spanish       | 1.4 | 1.4 | 1.5 | 1.4 | 1.5 |
| WMBM         | religious     | 1.7 | 1.0 | 1.3 | 1.1 | 1.3 |
| WAVS         | ethnic        | —   | —   | —   | —   | 1.2 |

## ATLANTA—(12)

|            |           |     |     |     |     |      |
|------------|-----------|-----|-----|-----|-----|------|
| WVEE       | R&B       | 9.8 | 9.6 | 8.9 | 9.4 | 10.4 |
| WSP-AM     | N/T       | 6.9 | 8.0 | 9.2 | 8.7 | 10.2 |
| WPKX-FM    | country   | 9.0 | 8.7 | 8.6 | 9.0 | 7.4  |
| WPCB       | AC        | 6.7 | 6.0 | 5.1 | 5.9 | 6.9  |
| WALR-AM-FM | R&B adult | 5.3 | 5.3 | 4.6 | 5.8 | 6.5  |
| WSTA       | top 40    | 6.1 | 6.2 | 5.2 | 5.1 | 6.1  |
| WRZA       | R&B       | 3.9 | 4.3 | 5.4 | 4.7 | 5.0  |
| WNNX       | modern    | 6.0 | 6.2 | 5.7 | 4.9 | 5.0  |
| WRLS       | album     | 4.9 | 3.9 | 5.0 | 5.2 | 4.9  |
| WBSY-FM    | AC        | 5.6 | 5.9 | 5.1 | 5.2 | 4.7  |
| WYAY       | country   | 3.4 | 3.0 | 3.6 | 4.2 | 4.2  |
| WFOX       | oldies    | 4.2 | 4.5 | 5.0 | 4.8 | 3.9  |
| WGST-AM-FM | N/T       | 4.2 | 4.4 | 5.0 | 4.1 | 3.9  |
| WZGC       | cls rock  | 3.6 | 3.3 | 3.1 | 3.1 | 3.4  |
| WJZF       | jazz      | 3.4 | 3.3 | 2.7 | 2.4 | 2.6  |
| WAOK       | religious | 2.0 | 2.1 | 1.9 | 2.5 | 1.5  |
| WCHN       | sports    | 1.2 | 1.0 | —   | —   | 1.0  |

## SEATTLE—(13)

|            |               |     |     |     |     |     |
|------------|---------------|-----|-----|-----|-----|-----|
| KIRO-AM    | N/T           | 8.8 | 5.6 | 7.1 | 7.6 | 6.9 |
| KRPS-AM-FM | country       | 5.0 | 4.6 | 5.4 | 6.0 | 5.9 |
| KUBE       | top 40/rhythm | 6.1 | 6.6 | 5.7 | 6.0 | 5.7 |
| KVI        | N/T           | 5.3 | 5.0 | 5.5 | 4.7 | 5.6 |
| KBSB-AM-FM | oldies        | 5.4 | 5.9 | 5.0 | 5.5 | 5.1 |
| KING       | classical     | 4.3 | 4.0 | 3.8 | 4.1 | 4.7 |
| KIKI       | adult std     | 4.3 | 5.7 | 3.6 | 4.3 | 4.7 |
| KISW       | album         | 3.6 | 3.4 | 4.1 | 3.5 | 3.8 |
| KZOK       | cls rock      | 4.2 | 4.4 | 4.2 | 3.8 | 3.8 |
| KJNO       | modern        | 4.5 | 5.1 | 4.3 | 4.3 | 3.7 |
| KLSY       | AC            | 3.7 | 3.4 | 3.7 | 4.0 | 3.6 |
| KROMO      | N/T           | 3.7 | 4.3 | 3.9 | 3.1 | 3.6 |
| KPLZ       | AC            | 4.0 | 4.0 | 4.7 | 3.6 | 3.6 |
| KYCW       | country       | 3.0 | 3.4 | 4.6 | 3.4 | 3.5 |
| KIRJ-FM    | '70s oldies   | 4.1 | 4.7 | 3.6 | 3.5 | 3.4 |
| KMTT       | triple-A      | 3.0 | 3.3 | 3.1 | 4.0 | 3.3 |
| KRWM       | AC            | 2.9 | 2.2 | 2.7 | 2.0 | 2.9 |
| KRPM/KRBS  | AC            | 3.7 | 2.2 | 1.8 | 3.0 | 2.6 |
| KIRO-2     | N/T           | 1.5 | 2.1 | 2.3 | 2.5 | 2.5 |
| KWIZ       | jazz          | 2.2 | 2.5 | 2.3 | 2.9 | 2.4 |
| KIR-AM     | sports        | 1.8 | 2.4 | 2.9 | 1.8 | 2.0 |
| KCMS       | religious     | 1.6 | 1.9 | 1.4 | 1.6 | 1.8 |
| KNWX       | N/T           | —   | —   | —   | —   | 1.0 |

## MINNEAPOLIS—(16)

|                |           |      |      |      |      |      |
|----------------|-----------|------|------|------|------|------|
| WCCO           | N/T       | 13.1 | 13.3 | 10.5 | 11.4 | 12.3 |
| KQRS-AM-FM     | album     | 10.8 | 10.6 | 11.6 | 12.0 | 11.9 |
| KOWB           | top 40    | 7.0  | 7.8  | 8.0  | 7.5  | 7.5  |
| WLTE           | AC        | 6.3  | 6.4  | 6.2  | 4.9  | 6.1  |
| KEGE-FM        | modern    | 5.4  | 5.3  | 5.8  | 6.7  | 6.0  |
| KEEY           | country   | 6.8  | 5.5  | 6.1  | 5.7  | 5.6  |
| KSTP-AM        | N/T       | 5.2  | 5.5  | 5.1  | 4.9  | 5.4  |
| KOQL           | oldies    | 5.9  | 5.3  | 6.1  | 5.8  | 5.3  |
| KOGL           | country   | 3.8  | 4.1  | 5.2  | 5.2  | 5.1  |
| WBOB-FM        | cls rock  | 6.3  | 5.4  | 4.7  | 5.3  | 5.0  |
| KTCJ/KTCZ      | triple-A  | 3.1  | 4.0  | 4.7  | 3.8  | 4.0  |
| KMIZ           | jazz      | 2.3  | 2.7  | 3.0  | 3.0  | 2.4  |
| KLBB/WLOL      | adult std | 2.3  | 1.9  | 2.0  | 1.8  | 2.3  |
| KFAN           | sports    | 2.3  | 1.5  | 1.6  | 1.5  | 2.1  |
| KREY/WREY/KCFE | modern    | 2.2  | 1.8  | 1.8  | 1.7  | 1.7  |

## ST. LOUIS—(17)

|            |           |      |      |      |      |      |
|------------|-----------|------|------|------|------|------|
| KMOX       | N/T       | 14.4 | 14.1 | 13.1 | 13.2 | 13.0 |
| KMJM       | R&B       | 7.5  | 6.8  | 7.1  | 6.3  | 8.2  |
| WIL        | country   | 9.3  | 8.3  | 7.8  | 8.0  | 6.9  |
| KEZK       | AC        | 7.0  | 7.3  | 6.9  | 5.7  | 6.7  |
| KTKY       | AC        | 5.3  | 4.5  | 5.6  | 5.9  | 5.3  |
| KPNT       | modern    | 4.8  | 4.4  | 5.7  | 4.4  | 5.0  |
| KSNE       | album     | 6.4  | 5.6  | 5.7  | 6.0  | 4.9  |
| KLOU       | oldies    | 4.0  | 3.9  | 4.7  | 3.7  | 4.6  |
| WRBQ-AM-FM | top 40    | 4.2  | 4.6  | 3.9  | 3.9  | 4.2  |
| WRXX       | country   | 4.2  | 3.9  | 3.1  | 3.0  | 3.6  |
| WTVV       | triple-A  | 1.5  | 1.8  | 2.1  | 2.6  | 3.6  |
| KHIT       | cls rock  | 2.9  | 3.4  | 3.3  | 2.9  | 3.0  |
| KSD-FM     | album     | 3.4  | 2.7  | 3.3  | 3.5  | 2.9  |
| KFUO-FM    | classical | 2.7  | 3.5  | 2.2  | 2.6  | 2.8  |
| KKOK       | R&B adult | 3.1  | 2.3  | 2.1  | 3.0  | 2.7  |
| WRTH       | adult std | 1.9  | 3.0  | 2.9  | 2.8  | 2.3  |
| KSO-AM     | N/T       | 1.5  | 1.3  | 1.1  | 1.8  | 2.0  |
| WIBV       | N/T       | 1.0  | 1.5  | 2.7  | 2.8  | 1.9  |
| KATZ-FM    | R&B adult | 1.0  | 1.6  | 1.1  | 1.8  | 1.3  |
| WCBW       | religious | 1.3  | 1.3  | 1.2  | 1.7  | 1.2  |
| WEW        | N/T       | 1.2  | 1.8  | 1.8  | 1.0  | 1.1  |
| KFNS       | N/T       | 1.2  | 1.0  | 1.0  | 1.0  | 1.0  |

## PHOENIX—(18)

|              |               |     |     |     |     |     |
|--------------|---------------|-----|-----|-----|-----|-----|
| KTAR         | N/T           | 8.0 | 7.6 | 6.2 | 7.1 | 7.1 |
| KMLE         | country       | 5.8 | 6.6 | 6.7 | 7.6 | 6.1 |
| KWIX         | adult std     | 5.8 | 5.6 | 4.5 | 5.5 | 5.9 |
| KKFR         | country       | 5.7 | 7.6 | 6.6 | 6.1 | 5.7 |
| KFYI         | top 40/rhythm | 7.0 | 7.1 | 6.4 | 5.7 | 5.6 |
| KYFV         | N/T           | 6.2 | 4.7 | 6.1 | 5.0 | 5.4 |
| KOOL-FM      | oldies        | 4.5 | 5.0 | 5.3 | 5.8 | 5.4 |
| KUPD-FM      | album         | 5.0 | 4.8 | 4.5 | 3.5 | 4.6 |
| KESZ         | AC            | 3.2 | 3.3 | 2.8 | 3.5 | 4.2 |
| KKBZ         | album         | 3.3 | 3.5 | 4.1 | 3.4 | 3.6 |
| KZPP         | AC            | 2.5 | 2.6 | 3.5 | 3.9 | 3.6 |
| KEOJ/KHOT-FM | modern        | 2.7 | 2.7 | 3.9 | 4.0 | 3.3 |
| KSLX-AM-FM   | cls rock      | 4.1 | 4.9 | 3.6 | 3.2 | 3.3 |
| KYOT         | jazz          | 4.1 | 2.5 | 3.1 | 3.7 | 3.2 |
| KZOW         | modern        | 2.7 | 3.3 | 2.9 | 3.8 | 3.2 |
| KKLT         | AC            | 3.5 | 3.7 | 3.4 | 4.3 | 3.0 |
| KHIC         | '70s oldies   | 2.5 | 2.2 | 2.0 | 2.3 | 2.5 |
| KRBU         | country       | —   | —   | —   | —   | 1.0 |
| KOAZ         | jazz          | 2.1 | 1.0 | —   | —   | 1.4 |
| KBZR         | religious     | —   | —   | —   | —   | 1.5 |
| KGME         | top 40/rhythm | —   | —   | —   | —   | 1.3 |
| —            | sports        | —   | —   | —   | —   | 1.0 |

## TAMPA, FLA.—(21)

|            |             |     |     |     |     |     |
|------------|-------------|-----|-----|-----|-----|-----|
| WFLZ       | top 40      | 7.8 | 7.5 | 8.4 | 8.2 | 7.9 |
| WYOX-FM    | country     | 7.9 | 5.9 | 7.3 | 7.7 | 7.9 |
| WFLA       | N/T         | 4.7 | 6.8 | 6.5 | 6.9 | 6.9 |
| WDUV       | adult std   | 5.6 | 6.7 | 6.6 | 6.5 | 6.6 |
| WWRM       | AC          | 5.5 | 5.1 | 4.3 | 6.0 | 5.3 |
| WRBQ-FM    | country     | 6.2 | 6.0 | 5.7 | 5.2 | 5.3 |
| WXTB       | album       | 5.9 | 5.0 | 5.3 | 5.5 | 5.2 |
| WYUW       | oldies      | 3.5 | 3.9 | 4.0 | 4.2 | 4.8 |
| WGUL-AM-FM | adult std   | 5.1 | 5.7 | 6.1 | 4.7 | 4.6 |
| WDAE/WUKS  | AC          | 4.9 | 3.7 | 4.1 | 4.2 | 4.5 |
| WCOP       | '70s oldies | 3.0 | 3.4 | 3.3 | 4.0 | 4.4 |
| WMTX-AM-FM | AC          | 6.0 | 6.0 | 6.4 | 4.5 | 4.0 |
| WSJT       | jazz        | 3.9 | 3.5 | 3.3 | 4.5 | 4.0 |
| WHTF       | triple-A    | 4.0 | 4.5 | 3.3 | 3.8 | 2.8 |
| WLVU-FM    | adult std   | 2.5 | 2.5 | 1.5 | 1.6 | 2.0 |
| WFLW-AM    | R&B adult   | 1.3 | 1.3 | 1.6 | 1.3 | 1.0 |
| WTTB       | cls rock    | 2.4 | 1.9 | 2.2 | 2.0 | 1.8 |
| WTMP       |             |     |     |     |     |     |



"SERVING 'EM UP..."

GREG MULL  
AIR ROCKS MANAGER

GRAND PRIZE  
1997 BMW  
Z3 ROADSTER



SECOND PRIZE  
1997 HARLEY-DAVIDSON  
FAT BOY



# AIR ROCKS

T H E F I R S T C O M P E T I T I O N

Sign up continues... Call Greg Mull, Allison Smith or Jason Teves at Active Industry Research (410)381-6800

COMPETITION BEGINS JANUARY 27, 1997

## SERVICES

### VOICEOVERS



**CALL FOR FREE CUSTOM STATION I.D. DEMO**  
1-800-843-3933  
ISDN/DCI  
WELCOME WMXV - "THE BUZZ" NY

### VOICEOVERS

Get what you want  
when you want it

KIIS-FM, Los Angeles  
KISS Country, Miami  
B-97, New Orleans  
KISS-FM, Dallas  
DRQ, Detroit  
K-Hits, Phoenix

**Sean Caldwell**  
PRODUCTIONS  
Country CHR Rock HotAC  
voice-over and imaging ISDN  
(813) 926-1250 **READY**

### JINGLES



**FINALLY ...**  
**I.D. JINGLES YOU CAN AFFORD!**  
Call today for your free demo CD ...  
**ALL NEW FOR '96!**  
You'll hear how **great** inexpensive  
jingles can sound!  
**KEN R. INCORPORATED**  
TOLL-FREE 1-800-451-KENR(5367)

### BOBBY OH!

**A FRESH VOICE FOR YOUR FRESH STATION IMAGE**

GET YOUR DEMO NOW VIA PHONE OR THE INTERNET  
**913-829-7333**  
23 YEARS IN RADIO  
<http://www.uit.net/bobbyoh>

### Michael Carlucci

is **THE VOICE CHOICE**  
Star, KFI-LA, 91X-S.D. P.A.  
Anncr. Dodgers, Mighty Ducks,  
Sony Playstation Sports, Nike,  
Disney.  
Liners • Promos • ID's • Spots  
(714) 435-9774

### CARTER DAVIS

**VOICE AND PRODUCTION FOR RADIO AND TV**  
Phone:  
(901) 681-0650

### MIKE McCARTNEY VOICE IMAGING

Overnite DAT, R to R or live ISDN  
KMBZ • WODJ • WHFB  
THE KANSAS CITY ROYALS  
RADIO NETWORK  
Consistent, Dependable and Affordable  
**(913) 894-4049**

## HELP WANTED

### CREATIVE WRITING PRODUCTION PRO NEEDED

We are one person short of having the finest creative production staff in the southeast - can you write and produce intelligent, witty, creative, dramatic production - agency quality - without a lot of noisy electronic effects? If you can, send me proof.  
Box 106  
Airplay Monitor Classified  
1515 Broadway  
New York, NY 10036

### IMMEDIATE OPENING TOP 100 MARKET COUNTRY 7-MID. TAPE & RESUME TO:

Box #105  
Airplay Monitor Classified  
1515 Broadway • New York, NY 10036

### AIR TALENT

PRIME PART-TIME OPPORTUNITY. MINIMUM ONE-YEAR EXPERIENCE. COUNTRY PREFERRED. T&R: WESC  
Ron Brooks  
223 W. Stone Ave.  
Greenville, SC 29609  
EOE

## HELP WANTED

### PRIME REAL ESTATE

WSPK, Poughkeepsie has its first morning show vacancy in 10 years and we're looking for a new tenant who has what it takes to carry on the Hudson Valley's CHR leader! (If you're "Geographically Challenged". Poughkeepsie is 60 miles north of NYC). Creativity, commitment, teamwork, pride, and excellence are the values we are searching for in our next solo or team occupants. We're not looking for drifters. Long term leases available to the right talent. If you're currently creating a fun, upbeat, and entertaining morning buzz in your town, or think you ought to be, rush your very best on-air material (and real estate background) to:  
STEW SCHANTZ, PD  
WSPK  
475 SOUTH AVE.  
BEACON, NY 12508  
**ABSOLUTELY NO PHONE CALLS ACCEPTED.**  
ENTERPRISE MEDIA PARTNERS.  
L.P. IS AN EQUAL OPPORTUNITY EMPLOYER.

### PM DRIVE

WGCH-AM is looking for strong community-minded PMD personality. Many past talents are in majors. Make a home or build a future. Production Director now. Be a PD. Soon.  
Bill Hoover  
WGCH  
1490 Dayton Ave.  
Greenwich, CT 06830  
EOE M/F  
MINORITIES ENCOURAGED TO APPLY.

### WXBQ

96.9 FM  
TWENTY FOUR CARROT COUNTRY  
**AIR PERSONALITY**  
RARE OPENING AT AMERICA'S #1 STATION WXBQ. OUR 7 TO MID MAN HAS BEEN PROMOTED FROM WITHIN. NOW ACCEPTING TAPES & RESUMES TO:  
BILL HAGY, WXBQ  
BOX 1389  
BRISTOL, VA 20203

## HELP WANTED



### CHR NIGHT SHOW

My night guy is going to Q102 in Philly! I'm looking for a fun larger-than-life night person! Is this you? Send me your best stuff!  
T&R to:  
Kid Kelly  
c/o WBHT  
600 Baltimore Dr.  
Wilkes-Barre, PA 18601  
TELEMEDIA BROADCASTING  
EOE/MF



### MORNING SHOW

Portland's NEW Modern AC is looking for a morning host. Are you creative, topical, upbeat and real with a sense of humor? Would you like to live near the mountains or ocean and want to work for America's best radio company? Then rush your T&R to:  
THE BEAT  
c/o Michael Newman  
2040 SW 1st Street  
Portland, Oregon 97201  
(no calls)  
AMERICAN RADIO SYSTEMS IS AN EQUAL OPPORTUNITY EMPLOYER.

Top 40 Airplay Monitor  
Country Airplay Monitor  
R&B Airplay Monitor  
Rock Airplay Monitor

The only radio publications based exclusively on electronically monitored airplay from Broadcast Data Systems.

**SUBSCRIBE TODAY: 1-800-722-2346**

FOR GROUP SUBSCRIPTIONS CALL  
(212) 536-5261

Part of the Billboard Music Group.

## CLASSIFIED ADVERTISING RATES

### HELP WANTED:

1 WEEK \$25.00 per inch  
2 WEEKS \$20.00 per inch

### POSITION WANTED:

\$45.00 per inch

### BOX NUMBER: Add \$5.00

### SERVICES:

1 WEEK \$75.00 per inch  
6 WEEKS \$65.00 per inch  
13 WEEKS \$60.00 per inch  
26 WEEKS \$55.00 per inch  
51 WEEKS \$50.00 per inch

### DEADLINE (ALL CLASSIFIED):

Each Wednesday 3pm EST, 9 day leadtime.

• Classified ads are non-commissionable •

### SUBMIT ALL AD COPY TO:

Laura Rivchun  
Airplay Monitor Classified  
1515 Broadway  
New York, NY 10036

Phone: 212-536-5058  
Fax: 212-536-8864/5055

# GREATEST GAINERS

Strongest Increase In Airplay This Week

## MAINSTREAM ROCK

INCREASE  
IN PLAYS

|  |              |
|--|--------------|
| <b>LIVE • Lakini's Juice (RADIOACTIVE/MCA)</b>   | <b>+1368</b> |
| WKLO +36, WARQ +35, WNOR +35, WIOT +33, KBER +33, KRZR +30, WRXR +29, WKQQ +29, WRIF +28, WAVF +27 |              |
| <b>SILVERCHAIR • Abuse Me (EPIC)</b>   | <b>+481</b>  |
| WEBN +16, WZAT +15, KIOZ +15, KLOS +15, KRZR +13, WAVF +13, WIYY +13, KUPD +13, KEGL +13, WZZO +12 |              |
| <b>U2 • Discotheque (ISLAND)</b>   | <b>+369</b>  |
| WTUE +23, WVRK +19, WDHA +18, WRXR +16, KLPX +15, KTXQ +15, WARQ +14, KLAQ +13, WKDF +13, WAVF +12 |              |
| <b>TONIC • Casual Affair (POLYDOR/A&amp;M)</b>   | <b>+278</b>  |
| WZAT +16, WIYY +14, KILO +13, WTPA +12, KRZR +10, KATT +10, WAAF +10, KEZO +9, KNCN +8, WTAK +8    |              |
| <b>NINE INCH NAILS • The Perfect Drug (NOTHING/INTERSCOPE)</b>                                     | <b>+256</b>  |
| KILO +21, WKLO +20, KRXQ +20, KUFO +17, KTUX +17, KISS +17, WAAF +14, WZTA +13, KTXQ +12, KBPI +10 |              |
| <b>THE WALLFLOWERS • One Headlight (INTERSCOPE)</b>  | <b>+240</b>  |
| KIOZ +22, KILO +18, KSJO +14, KOMP +13, WPYX +13, WRDU +13, KLAQ +12, KRAB +11, KYYS +11, KRXQ +11 |              |
| <b>METALLICA • King Nothing (ELEKTRA/EEG)</b>  | <b>+160</b>  |
| WWDC +10, WDHA +9, KRXQ +8, WTFX +7, WBLM +7, WEGR +7, WTPA +6, WHJY +6, WIYY +6, WJRR +5          |              |
| <b>COUNTING CROWS • A Long December (DGC/GEFFEN)</b>   | <b>+142</b>  |
| KRAB +21, KLPX +13, WIZN +12, WCKW +12, WEGR +12, KDKB +12, WONE +8, WTUE +8, WVRK +6, WBLM +6     |              |
| <b>WIDESPREAD PANIC • Hope In A Hopeless World (CAPRICORN/MERCURY)</b>                             | <b>+138</b>  |
| WIMZ +14, WZAT +13, WROQ +10, WROV +9, WTUE +9, WTAK +8, KLBJ +8, WTPA +7, WBAB +7, WVRK +6        |              |
| <b>JOURNEY • Can't Tame The Lion (COLUMBIA)</b>  | <b>+133</b>  |
| KTAL +16, KLOS +14, WCKW +13, WBAB +12, KDKB +11, WVRK +10, WPYX +9, WSTZ +8, KYYS +7, KLPX +6     |              |

## MODERN ROCK

INCREASE  
IN PLAYS

|  |              |
|--|--------------|
| <b>LIVE • Lakini's Juice (RADIOACTIVE/MCA)</b>   | <b>+1783</b> |
| CIMX +74, WDGE +54, WRLG +50, WDRE +45, KXTE +42, WENZ +41, WBCN +41, WEND +39, KLZR +39, KXRK +38 |              |
| <b>NINE INCH NAILS • The Perfect Drug (NOTHING/INTERSCOPE)</b>                                     | <b>+966</b>  |
| CIMX +32, KXTE +30, WXRK +29, KTEG +27, KNRK +26, KLZR +25, KITS +25, KROX +23, WDGE +23, WDRE +23 |              |
| <b>U2 • Discotheque (ISLAND)</b>   | <b>+659</b>  |
| CIMX +27, KHTY +26, KEDG +25, KDGE +22, KLYY +21, WPLA +20, WMRQ +20, KCXX +19, WXNR +18, WRXQ +18 |              |
| <b>SILVERCHAIR • Abuse Me (EPIC)</b>   | <b>+453</b>  |
| KHTY +30, KEDG +21, KXRK +20, KTOZ +18, KXTE +17, KLYY +17, CIMX +17, KFRR +14, WMRQ +14, KROX +13 |              |
| <b>CAKE • I Will Survive (CAPRICORN/MERCURY)</b>   | <b>+298</b>  |
| KROX +24, WDRE +20, KJEE +18, KLZR +18, WENZ +16, KNNC +15, KXRK +14, KICT +14, XTRA +14, WROX +12 |              |
| <b>VERUCA SALT • Volcano Girls (MINTY FRESH/OUTPOST/GEFFEN)</b>                                    | <b>+250</b>  |
| KOME +23, KEGE +22, KROQ +21, CIMX +17, KPNT +15, KREV +14, KNDD +14, WDRE +13, KEDG +13, KXTE +12 |              |
| <b>BUSH • Greedy Fly (TRAUMA/INTERSCOPE)</b>   | <b>+240</b>  |
| WCYY +22, KTEG +20, WXEG +17, KMYZ +17, KFRR +14, KNRK +13, KEDG +13, WROX +12, WKQX +12, KNNC +11 |              |
| <b>SUBLIME • Santeria (GASOLINE ALLEY/MCA)</b>   | <b>+213</b>  |
| WXRK +19, WGRD +17, KNRX +14, WROX +14, KLYY +13, KHTY +13, WPLA +12, KPOI +11, KROX +11, WAQZ +11 |              |
| <b>PRODIGY • Firestarter (MUTE-XL/MAVERICK/WARNER BROS.)</b>                                       | <b>+180</b>  |
| WBZU +15, WDRE +12, WQBK +12, KXRK +12, WENZ +10, WHFS +9, KJEE +8, WPLA +8, WCYY +8, KROQ +7      |              |
| <b>MARILYN MANSON • Tourniquet (NOTHING/INTERSCOPE)</b>  | <b>+171</b>  |
| WEND +14, KGDE +14, KJEE +11, WBZU +10, WCYY +10, KNNC +10, WRXQ +9, WDRE +8, WMSM +8, KEDJ +7     |              |

# VIDEO PLAYLISTS

MOST PLAYED ROCK TRACKS



**1**  
MUSIC FIRST

|    | TW | LW |    | TW   | LW |    |
|----|----|----|----|--|----|----|
| 1  | 33 | 21 | 1  | Bush, Swallowed                                | 30 | 23 |
| 2  | 30 | 22 | 2  | Counting Crows, A Long December                | 24 | 18 |
| 3  | 25 | 23 | 3  | U2, Discotheque                                | 24 | 12 |
| 4  | 24 | 20 | 4  | The Cardigans, Lovefool                        | 22 | 17 |
| 5  | 22 | 13 | 5  | The Smashing Pumpkins, Thirty-Three            | 21 | 17 |
| 6  | 22 | 13 | 6  | John Mellencamp, Just Another Day              | 21 | 16 |
| 7  | 20 | 13 | 7  | Stone Temple Pilots, Lady Picture Show         | 20 | 15 |
| 8  | 19 | 14 | 8  | Live, Lakini's Juice                           | 20 | 0  |
| 9  | 12 | 9  | 9  | Sheryl Crow, Everyday Is A Winding Road        | 19 | 11 |
| 10 | 12 | 11 | 10 | Dave Matthews Band, Crash Into Me              | 18 | 16 |
| 11 | 12 | 9  | 11 | Jewel, You Were Meant For Me                   | 17 | 7  |
| 12 | 11 | 8  | 12 | Unsane, Scrape                                 | 17 | 5  |
| 13 | 10 | 7  | 13 | The Wallflowers, One Headlight                 | 16 | 15 |
| 14 | 10 | 0  | 14 | Luscious Jackson, Naked Eye                    | 15 | 9  |
| 15 | 9  | 8  | 15 | The Chemical Brothers, Setting Sun             | 14 | 11 |
| 16 | 9  | 8  | 16 | Prodigy, Firestarter                           | 13 | 10 |
| 17 | 7  | 5  | 17 | Soundgarden, Blow Up The Outside World         | 12 | 16 |
| 18 | 7  | 6  | 18 | Kula Shaker, Tattva                            | 12 | 7  |
| 19 | 7  | 5  | 19 | 311, All Mixed Up                              | 11 | 26 |
| 20 | 7  | 5  | 20 | No Doubt, Don't Speak                          | 11 | 24 |
| 21 | 7  | 4  | 21 | The Offspring, All I Want                      | 11 | 0  |
| 22 | 6  | 4  | 22 | Fountains Of Wayne, Radiation Vibe             | 10 | 7  |
| 23 | 6  | 4  | 23 | Sublime, Santeria                              | 8  | 2  |
| 24 | 5  | 2  | 24 | Better Than Ezra, Desperately Wanting          | 8  | 5  |
| 25 | 5  | 2  | 25 | Marilyn Manson, Tourniquet                     | 7  | 0  |
| 26 | 5  | 2  | 26 | Poe, Hello                                     | 6  | 1  |
| 27 | 4  | 2  | 27 | Failure, Stuck On You                          | 6  | 6  |
| 28 | 4  | 2  | 28 | Fun Lovin' Criminals, The Fun Lovin' Criminals | 5  | 2  |
| 29 | 4  | 2  | 29 | Bloodhound Gang, Fire Water Burn               | 5  | 4  |
| 30 | 4  | 2  | 30 | Red Hot Chili Peppers, Love Rollercoaster      | 5  | 15 |
| 31 | 4  | 5  | 31 | Republica, Drop Dead Gorgeous                  | 5  | 0  |
| 32 | 4  | 5  | 32 | Depeche Mode, Barrel Of A Gun                  | 5  | 0  |
| 33 | 4  | 4  | 33 | Bjork, I Miss You                              | 4  | 0  |
| 34 | 4  | 4  | 34 | No Doubt, Just A Girl                          | 4  | 3  |
| 35 | 4  | 2  | 35 | 311, Down                                      | 4  | 2  |
| 36 | 4  | 5  | 36 | Nerf Herder, Van Halen                         | 4  | 3  |
| 37 | 4  | 2  | 37 | Nine Inch Nails, Closer                        | 3  | 0  |
| 38 | 4  | 2  | 38 | Rage Against The Machine, Bulls On Parade      | 3  | 1  |
| 39 | 3  | 3  | 39 | Local H, Bound For The Floor                   | 3  | 6  |
| 40 | 3  | 1  | 40 | Sublime, What I Got                            | 3  | 5  |

## TRIPLE-A

INCREASE  
IN PLAYS

|   |            |
|---|------------|
| <b>R.E.M. • Electrolite (WARNER BROS.)</b>  | <b>+66</b> |
| WRLT +14, WTTS +14, KUMT +12, CIDR +5, KSCA +4, KFOG +4, WMAX +3, WNCS +3, KINK +2, KMTT +2 |            |
| <b>SHAWN COLVIN • Sunny Came Home (COLUMBIA)</b>  | <b>+64</b> |
| WHPT +14, WKOC +11, CIDR +10, KSCA +6, KBCC +6, WXRC +4, KTMN +3, WXRV +3, KINK +2, WTTS +2 |            |
| <b>FIONA APPLE • Sleep To Dream (CLEAN SLATE/WORK)</b>                                      | <b>+61</b> |
| WVRV +18, KTMN +13, WXRV +7, WRLT +6, WNCS +6, CIDR +3, KSCA +3, WJXB +2, KGSR +2, WBOS +1  |            |
| <b>DUNCAN SHEIK • She Runs Away (ATLANTIC)</b>  | <b>+57</b> |
| WVRV +21, KUMT +13, KTMN +5, WXRC +5, WJXB +2, KSCA +2, WNCS +2, CIDR +1, WRLT +1, KXPT +1  |            |
| <b>COUNTING CROWS • A Long December (DGC/GEFFEN)</b>  | <b>+49</b> |
| KQPT +26, WJXB +12, WRLT +10, KSCA +8, KGSR +8, KXPT +3, KTCZ +2, WXRT +2, WNCS +1          |            |
| <b>BIG HEAD TODD &amp; THE MONSTERS • Resignation Superman (REVOLUTION)</b>                 | <b>+45</b> |
| WXRV +11, WKOC +8, KFOG +8, KSCA +7, WNCS +7, WXRT +4, WXLE +3, KMTT +2, KGSR +2, WJXB +1   |            |
| <b>JEWEL • You Were Meant For Me (ATLANTIC)</b>   | <b>+39</b> |
| WHPT +14, KBCC +10, WTTS +9, WRLT +5, KXPT +5, WBOS +3, KUMT +2, WJXB +2, KTMN +2, WMAX +1  |            |
| <b>TOM PETTY AND THE HEARTBREAKERS • Change The Locks (WARNER BROS.)</b>                    | <b>+33</b> |
| WRLT +12, WTTS +12, KSCA +9, WXRT +2, WMAX +1, KBCC +1                                      |            |
| <b>WIDESPREAD PANIC • Hope In A Hopeless World (CAPRICORN/MERCURY)</b>                      | <b>+31</b> |
| WXLE +15, KPIG +5, WTTS +5, KSCA +5, KTCZ +5, KTMN +4, KFOG +4, KXPT +2, KMTT +1, WBOS +1   |            |
| <b>U2 • Discotheque (ISLAND)</b>  | <b>+29</b> |
| WXLE +12, WHPT +10, KSCA +10, KGSR +7, WXRV +5, KMTT +4, KBCC +4, WNCS +3, WBOS +2, WJXB +1 |            |

# VALLEJO

THE INCENDIARY DEBUT ALBUM, FEATURING THE SINGLE "JUST ANOTHER DAY"

"This outfit is all set to follow in the footsteps of such other groove outfits as 311!"

-Virtually Alternative



• Already on over 25 Rock and Alternative stations including KTCL, WXPS, KDEO, KLBj, KCXX, KHTY

**IMPACTING RADIO  
JANUARY 27th**



TVT RADIO CONTACTS: John Perrone, Sudi Gaasche, Gary Jay, Zach Lanier @212.979.6410. OR Mark Jackson @ 818.347.9638



So fresh and unabashedly sincere that you don't just want to play it, you want to sleep with it under your pillow. Entertainment Weekly

Rolling Stone

"outtasite (outta mind)"

Produced by Wilco Management: Tony Margherita for TMM, Chicago The album: Being There

MAINSTREAM

134 BDS Spins, +24

New Airplay:

- KISS, KYYS, WKLQ, WQLZ, WCPR, WBXQ, WQCM, KFMF

On:

- WFBQ 10x, WXRA 14x, KLBj 10x, WBAB 10x, WEZX 8x, WAPL 17x, KLAQ 8x, KTYD 16x, WWCT 10x, WTXF 5x, +25 MORE

MODERN

383 BDS Spins, +100

New Airplay:

- WDRE, WROX, WPLA, KKND, KKND, WTCL, WQBK, WEQX, WAQZ, WEJE, KQRX, Y107

Hot action at:

- 99X 20x, WMMS 26x, WENZ 20x, WXEG 22x, KGDE 22x, KTEG 23x, KROX 19x, WQXA 19x, WBRU 15x

MAINSTREAM ROCK

POWER PLAYLISTS



AIRPLAY Monitor For Week Ending January 19, 1997

For Week Ending January 19, 1997

Playlists supplied by Broadcast Data Systems' Radio Track service. Songs ranked by number of plays in monitored areas. Playlists are listed in order of TBA weekly survey, beginning with the highest-ranking station. Cues are updated twice weekly following the release of the Spring and Fall Arbitron surveys. The number of stations shown each week varies depending upon space.

Table with 3 columns: KLOS (Los Angeles), WRCX (Chicago), and WYSP (Philadelphia). Each column lists songs and their corresponding radio stations.

Table with 3 columns: WMMR (Philadelphia), KQRS (Minneapolis), and WRIF (Detroit). Each column lists songs and their corresponding radio stations.

Table with 3 columns: WWDC (Washington, DC), WDVE (Pittsburgh), and WFBQ (Indianapolis). Each column lists songs and their corresponding radio stations.

Table with 3 columns: WAAF (Boston), KEGL (Dallas), and WKLS (Atlanta). Each column lists songs and their corresponding radio stations.

POWER PLAYLISTS



AIRPLAY Monitor

For Week Ending January 19, 1997

Playlists supplied by Broadcast Data Systems' Radio Track service. Songs ranked by number of plays in monitored week. Playlists are listed in order of...

KSHE St. Louis PD: Rick Balis MD: Al Hofer. Top 30 playlist including Rush, Eric Johnson, S.E.V., Metallica, etc.

KTXQ Dallas OM: Andy Lockridge MD: Redbeard. Top 30 playlist including Live, Lakin's Juice, U2, Discotique, etc.

WZTA Miami PD: Gregg Steele MD: Heidi Hess. Top 30 playlist including The Wallflowers, One Headlight, Silverchair, etc.

WEBN Cincinnati OM: Jim Richards MD: Scott Reinhart. Top 30 playlist including Metallica, Hero Of The Day, Silverchair, etc.

KSJO San Jose PD: Dana Jang MD: Laurie Free. Top 30 playlist including Soundgarden, Blow Up The Outside World, Rush, etc.

WJRR Orlando PD: Dick Sheetz MD: Pat Lynch. Top 30 playlist including Soundgarden, Blow Up The Outside World, Matchbox 20, etc.

WIYY Baltimore PD: Rick Strauss MD: Rob Heckman. Top 30 playlist including Social Distortion, I Was Wrong, Silverchair, etc.

WBZX Columbus, OH PD: Hal Fish APD/MD: Ronni Hunter. Top 30 playlist including Tonic, Open Up Your Eyes, Sublime, etc.

WXTB Tampa OM: Brad Haradin MD: Brian Medlin. Top 30 playlist including Alice In Chains, Agn n, Metallica, etc.

WHJY Providence PD: Bill Weston MD: Sharon Schifino. Top 30 playlist including Sublime, What I Got, Tonic, etc.

WONE Akron PD: J.D. Top 30 playlist including Don Henley, Through Your Hands, Rush, etc.

WLZR Milwaukee PD: Keith Hastings. Top 30 playlist including Live, Lakin's Juice, Rush, Half The World, etc.

"Instant phone response! 100% positive! Our audience has no pre-conceived notions about this band. How can you be hurt from a song about conviction, especially if the song does not compromise listeners expectations."

KEVIN VARGAS, PD KISS

"I must admit to some hesitation regarding DC Talk's 'Jesus Freak', in the secular sense, not in sound. After 2 weeks of airplay, all hesitation has vanished. The phone calls are numerous, vocal, and ALL positive!"

CURTISS JOHNSON, Dir. Prog. KRXQ

Couldn't wait:

- KISS 14x, KRXQ 15x, KNRX 9x, KROX 16x, WKRA 15x, WARQ 11x, KDLG, KCLB, WKLQ, KBER, KILO, KRZR, KKZQ, KSFY, WBJE, WPGU

dctalk
jesus
freak



from the album
jesus freak

produced by toby mckeehan
and mark heinermann
true artist management

http://www.dctalk.com
http://www.virginrecords.com

© 1997 Virgin Records America, Inc.

# MAINSTREAM ROCK

# POWER PLAYLISTS

For Week Ending January 19, 1997



Playlists supplied by Broadcast Data Systems. Radio Track service. Songs ranked by number of plays in monitored week. Playlists are listed in order of TSA weekly sums, beginning with the highest-ranking station. Cumes are updated twice yearly following the release of the Spring and Fall Arbitron surveys. The number of stations shown each week varies depending upon space.

| WKDF                                     |   | KISS   |    | KBPI                    |   | WBAB                         |    | KQRC   |  | KISW                                      |    |
|--|---|--|----|-------------------------|---|------------------------------|----|--|--|---|----|
| Nashville PD: Kidd Redd MD: Sheri Sexton |   | San Antonio OM: Virgil Thompson PD: Kevin Vargas |    | Denver PD: Bob Richards |   | Long Island OM: Eric Willman |    | Kansas City PD: Doug Sorenson MD: Valerie Knight |  | Seattle PD: Clark Ryan MD: Cathy Faulkner |    |
| TW LW                                    |   | TW LW  |    | TW LW                   |   | TW LW                        |    | TW LW  |  | TW LW                                     |    |
| 1  | Tool, Stink1st                            | 37   | 37 | 1                       | Soundgarden, Blow Up The Outside World    | 36                           | 35 | 1  | Soundgarden, Blow Up The Outside World       | 33  | 31 |
| 2  | 311, All Mixed Up                         | 36   | 31 | 2                       | Stone Temple Pilots, Lady Picture Show    | 35                           | 34 | 2  | Metallica, Hero Of The Day                   | 31  | 27 |
| 3  | Better Than Ezra, Desperately Wanting     | 36   | 32 | 3                       | The Smashing Pumpkins, Muzzle             | 34                           | 30 | 3  | Stone Temple Pilots, Lady Picture Show       | 30  | 29 |
| 4  | Stir, Looking For                         | 36   | 36 | 4                       | The Wallflowers, One Headlight            | 30                           | 30 | 4  | Matchbox 20, Long Day                        | 29  | 28 |
| 5  | Sublime, What I Got                       | 34   | 36 | 5                       | The Smashing Pumpkins, Muzzle             | 27                           | 33 | 5  | Live, Lakin's Juice                          | 23  | 0  |
| 6  | U2, Discotheque                           | 28   | 15 | 6                       | Metallica, Hero Of The Day                | 26                           | 11 | 6  | Sponge, Have You Seen Mary                   | 20  | 0  |
| 7  | Stone Temple Pilots, Lady Picture Show    | 25   | 33 | 7                       | Poe, Hello                                | 25                           | 33 | 7  | U2, Discotheque                              | 17  | 0  |
| 8  | Live, Lakin's Juice                       | 25   | 0  | 8                       | Better Than Ezra, Desperately Wanting     | 23                           | 10 | 8  | Rush, Half The World                         | 15  | 0  |
| 9  | 311, All Mixed Up                         | 25   | 21 | 9                       | Luscious Jackson, Naked Eye               | 22                           | 8  | 9  | Sponge, Have You Seen Mary                   | 15  | 0  |
| 10                                       | Metallica, King Nothing                   | 23   | 28 | 10                      | Stir, Looking For                         | 19                           | 28 | 10   | Sublime, What I Got                          | 17  | 18 |
| 11                                       | Silverchair, Abuse Me                     | 22   | 12 | 11                      | Darlaheed, Grow Your Own                  | 18                           | 18 | 11   | Live, Lakin's Juice                          | 12  | 0  |
| 12                                       | Semisonic, F.N.T.                         | 20   | 15 | 12                      | Stone Temple Pilots, Lady Picture Show    | 18                           | 34 | 12   | Journey, Can't Tame The Lion                 | 12  | 0  |
| 13                                       | Darlahood, Grow Your Own                  | 19   | 31 | 13                      | Sublime, What I Got                       | 18                           | 8  | 13   | Van Halen, Can't Get This Stuff No More      | 10  | 12 |
| 14                                       | Red Hot Chili Peppers, Love Rollercoaster | 18   | 22 | 14                      | Pearl Jam, Off He Goes                    | 17                           | 16 | 14   | Better Than Ezra, Desperately Wanting        | 8   | 6  |
| 15                                       | Failure, Stuck On You                     | 18   | 15 | 15                      | Nine Inch Nails, Perfect Drug             | 17                           | 17 | 15   | Marilyn Manson, The Beautiful People         | 8   | 5  |
| 16                                       | Filter, Jagged Little Pill                | 17   | 16 | 16                      | Type D Negative, Love You To Death        | 15                           | 13 | 16   | Rush, Half The World                         | 7   | 25 |
| 17                                       | Butterfly Surfers, Pepper                 | 16   | 19 | 17                      | Tool, Stink1st                            | 15                           | 19 | 17   | Eric Johnson, S.R.V.                         | 7   | 0  |
| 18                                       | Sponge, Have You Seen Mary                | 16   | 16 | 18                      | Stabbing Westward, Shame                  | 15                           | 14 | 18   | Wilson, Outlaste                             | 6   | 18 |
| 19                                       | Presidents Of The United States, Mach 5   | 16   | 18 | 19                      | R.E.M., The Wake-Up Bomb                  | 13                           | 12 | 19   | Failure, Stuck On You                        | 6   | 10 |
| 20                                       | The Smashing Pumpkins, Muzzle             | 15   | 17 | 20                      | Silverchair, Abuse Me                     | 13                           | 8  | 20   | Van Halen, Can't Get This Stuff No More      | 6   | 15 |
| 21                                       | Stabbing Westward, Shame                  | 14   | 16 | 21                      | Kula Shaker, Hey Dude                     | 13                           | 0  | 21   | Silverchair, Abuse Me                        | 6   | 15 |
| 22                                       | Local H, Bound For The Floor              | 14   | 17 | 22                      | Local H, Bound For The Floor              | 12                           | 12 | 22   | Stir, Looking For                            | 6   | 22 |
| 23                                       | The Wallflowers, One Headlight            | 14   | 12 | 23                      | Local H, Bound For The Floor              | 12                           | 14 | 23   | Type D Negative, Love You To Death           | 6   | 12 |
| 24                                       | Alice In Chains, Wound                    | 13   | 17 | 24                      | Tom Petty & The Heartbreakers, Climb That | 12                           | 12 | 24   | Collective Soul, Where The River Flows       | 6   | 11 |
| 25                                       | Collective Soul, The World I Know         | 13   | 10 | 25                      | Semisonic, F.N.T.                         | 12                           | 12 | 25   | Eric Johnson, S.R.V.                         | 6   | 11 |
| 26                                       | 311, Down                                 | 13   | 14 | 26                      | de Talk, Jesus Freak                      | 12                           | 0  | 26   | Stabbing Westward, What Do I Have To Do?     | 6   | 10 |
| 27                                       | Soundgarden, Burden In My Hand            | 13   | 11 | 27                      | Rush, Half The World                      | 11                           | 13 | 27   | Spacehog, In The Meantime                    | 6   | 10 |
| 28                                       | Alice In Chains, Over Now                 | 13   | 12 | 28                      | Social Distortion, When The Angels Sing   | 11                           | 9  | 28   | Go Go Dolls, Long Way Down                   | 6   | 10 |
| 29                                       | The Offspring, All I Want                 | 12   | 11 | 29                      | Tonic, Open Up Your Eyes                  | 10                           | 13 | 29   | Tonic, Open Up Your Eyes                     | 6   | 10 |
| 30                                       | Foo Fighters, Big Me                      | 12   | 11 | 30                      | Alice In Chains, Grind                    | 10                           | 12 | 30   | The Smashing Pumpkins, Bullet With Butterfly | 6   | 10 |

**TONIC**  
**CASUAL AFFAIR**  
*the new single*



**Debut (23) Mainstream Rock Monitor**

**616 Spins (+338)**

**CLOSING FAST!**

**NEW THIS WEEK:**

WRCX WIYY KUFO WKLS  
 WRCQ KLPX WPLR WROV AND MORE

**On Tour Now:**

1/24 Jackson  
 1/25 Memphis  
 1/28 Oklahoma City  
 1/29 Austin  
 1/30 College Radio  
 1/31 Dallas  
 2/1 Houston



<http://www.polydor-atlas.com>, polydor

**Management: Sheila Scott · Produced by Jack Joseph Puig**

©1997 PolyGram Records Inc. Manufactured and Marketed by A&V Records, Inc. All rights reserved.

World Radio History



★ ★ ★ AIRPOWER ★ ★ ★  
(Minimum 800 detections for the first time)

|   | Total Plays/Gain | Total Plays/Gain   | Total Plays/Gain |  |                |
|---|------------------|--|------------------|--|----------------|
| <b>LIVE</b><br><i>Lakini's Juice (Radioactive/MCA)</i><br>Total Stations: 82/Chart Move: Debut 3<br>Heavy (21+ plays): 38 KATT, KAZR, KBER, KILO, KISS, KQRC, KRXX, KRZR, KTUX, KTXQ, KUFO, KUPD, KZRR, WAAF, WARQ, WAVF, WBZX, WIOT, WIYY, WJRR, WKDF, WKLO, WKLS, WKQQ, WLZR, WNOR, WRCX, WRIF, WRXL, WRXR, WTPA, WTPA, WWDC, WXRA, WXTB, WZMT, WZTA, WZZO<br>Medium (14-20): 20 KEGL, KEZO, KIOZ, KISW, KLAQ, KNCN, KOMP, KRAD, KSJO, WCCC, WCMF, WEBN, WHJY, WIXV, WNCD, WONE, WTUE, WVRK, WYSP, WZAT<br>Light (Under 14): 24<br>New Airplay This Week: 56 KATT, KBER, KEGL, KEZO, KIOZ, KISS, KISW, KLAQ, KLBJ, KLOS, KNCN, KOMP, KQRC, KRAB, KRAD, KRZR, KRZZ, KTUX, KTYD, KUPD, KXUS, KZRR, WARQ, WAVF, WBAB, WCCC, WCMF, WDMA, WEBN, WEGR, WEZX, WHJY, WIOT, WIXV, WKDF, WKLC, WKLO, WKLS, WKQQ, WNCD, WNOR, WONE, WPYX, WRDU, WRIF, WROV, WRXL, WRXR, WSTZ, WTUE, WVRK, WYSP, WZAT, WZZO, WZZR | <b>1612/1368</b> | <b>SILVERCHAIR</b><br><i>Abuse Me (Epic)</i><br>Total Stations: 76/Chart Move: 21-6<br>Heavy (21+): 22 KATT, KAZR, KEGL, KILO, KTXQ, KUFO, KUPD, WAAF, WAVF, WBZX, WEBN, WIYY, WJRR, WKDF, WKLO, WLZR, WNOR, WRIF, WWDC, WXRA, WZAT, WZTA<br>Medium (14-20): 23 KBER, KIOZ, KISW, KLBJ, KLOS, KNCN, KOMP, KRXX, KSJO, KTYD, KZRR, WARQ, WCCC, WIOT, WKLS, WKQQ, WRCX, WROV, WRXR, WTPA, WXTB, WZMT, WZZO<br>Light (Under 14): 31<br>New Airplay This Week: 22 KBPI, KCAL, KIOZ, KLAQ, KLOS, KNCN, KOMP, KQRC, KRAD, KRZR, KRZZ, KTUX, WAPL, WCCC, WCKW, WNCD, WSTZ, WTXF, WTUE, WVRK, WYSP, WZZO | <b>1189/481</b>  | <b>COUNTING CROWS</b><br><i>A Long December (DGC/Geffen)</i><br>Total Stations: 56/Chart Move: 22-20<br>Heavy (21+): 14 KDKB, KLOS, KRAB, KTUX, KTYD, WARQ, WAVF, WBAB, WDMA, WMMR, WPYX, WRXR, WTAK, WZAT<br>Medium (14-20): 18 KEZO, KLAQ, KMJX, KQRS, KTXQ, KXUS, KZRR, WEZX, WHJY, WIXV, WIZN, WKLC, WKQQ, WONE, WVRK, WWDC, WZTA, WZZR<br>Light (Under 14): 24<br>New Airplay This Week: 5 KLPX, KRAB, WCKW, WEGR, WTUE | <b>841/142</b> |

|   | No. Of Stations |
|---|-----------------|
| <b>LIVE</b><br><i>Lakini's Juice (Radioactive/MCA)</i>                              | 56              |
| <b>SILVERCHAIR</b><br><i>Abuse Me (Epic)</i>  | 22              |
| <b>TONIC</b><br><i>Casual Affair (Polydor/A&amp;M)</i>                              | 18              |
| <b>NINE INCH NAILS</b><br><i>The Perfect Drug (Nothing/Interscope)</i>              | 15              |
| <b>BIG HEAD TODD &amp; THE MONSTERS</b><br><i>Resignation Superman (Revolution)</i> | 11              |
| <b>METALLICA</b><br><i>King Nothing (Elektra/EEG)</i>                               | 11              |

**AIRPOWER BOUND**

|  | Total Plays/Gain |
|--|------------------|
| <b>THE OFFSPRING</b><br><i>All I Want (Columbia)</i><br>Total Stations: 56/Chart Move: 23-22<br>Heavy (21+ plays): 10 KAZR, KBER, KTXQ, WAAF, WLZR, WNOR, WRCX, WRIF, WXRA, WZAT<br>Medium (14-20): 12 KILO, KRAD, KRXX, KTUX, KUFO, KUPD, WIOT, WKLO, WRXL, WRXR, WTPA, WWDC<br>Light (Under 14): 34<br>New Airplay This Week: 6 KSJO, WBZX, WEBN, WHJY, WKLS, WVRK | <b>733/36</b>    |

|   | Total Plays/Gain |
|---|------------------|
| <b>THE SMASHING PUMPKINS</b><br><i>Thirty-Three (Virgin)</i><br>Total Stations: 41/Chart Move: Debut 32<br>Heavy (21+): 6 KLAQ, KRAB, WARQ, WNOR, WXRA, WZAT<br>Medium (14-20): 8 KEZO, KLBJ, KNCN, KRXX, KTYD, WTPA, WVRK, WZZO<br>Light (Under 14): 27<br>New Airplay This Week: 7 KEGL, KISW, KTXQ, KUFO, WNOR, WPYX, WZTA | <b>460/86</b>    |

|  | Total Plays/Gain |
|--|------------------|
| <b>ERIC JOHNSON</b><br><i>S.R.V. (Capitol)</i><br>Total Stations: 28<br>Heavy (21+): 4 KEGL, KLBJ, KMJX, KSHE<br>Medium (14-20): 9 KDKB, KLAQ, KMOD, KNCN, KQRS, KTUX, WAPL, WYFV, WPLR<br>Light (Under 14): 15<br>New Airplay This Week: 2 KYYS, WSFL | <b>350/-2</b>    |

|  | Total Plays/Gain |
|--|------------------|
| <b>JOURNEY</b><br><i>Can't Tame The Lion (Columbia)</i><br>Total Stations: 29<br>Heavy (21+): 4 KLOS, WKLC, WONE, WRDU<br>Medium (14-20): 6 KDKB, KTAL, KXUS, WAPL, WFBQ, WYFV<br>Light (Under 14): 19<br>New Airplay This Week: 10 KDKB, KLPX, KTAL, KYYS, WAQX, WBAB, WCKW, WPYX, WSTZ, WVRK | <b>345/133</b>   |

|  | Total Plays/Gain |
|--|------------------|
| <b>COREY STEVENS</b><br><i>It's Over (Eureka/Discovery)</i><br>Total Stations: 22<br>Heavy (21+): 0<br>Medium (14-20): 5 KQRS, WYFV, WROQ, WRXK, WZZR<br>Light (Under 14): 17<br>New Airplay This Week: 1 WLVQ | <b>221/12</b>    |

|  | Total Plays/Gain |
|--|------------------|
| <b>CATFISH</b><br><i>Invisible (Eureka/Discovery)</i><br>Total Stations: 23<br>Heavy (21+): 0<br>Medium (14-20): 4 KISS, KTUX, WAAF, WZZO<br>Light (Under 14): 19<br>New Airplay This Week: 7 KLAQ, KNCN, KQRC, WKLO, WLZR, WVRK, WYSP | <b>206/61</b>    |

|  | Total Plays/Gain |
|--|------------------|
| <b>POE</b><br><i>Hello (Modern/Atlantic)</i><br>Total Stations: 22<br>Heavy (21+): 1 KISS<br>Medium (14-20): 5 KBER, KRXX, WAAF, WJRR, WXRA<br>Light (Under 14): 16<br>New Airplay This Week: 1 WAAF | <b>174/7</b>     |

|   | Total Plays/Gain |
|---|------------------|
| <b>PEARL JAM</b><br><i>Off He Goes (Epic)</i><br>Total Stations: 33/Chart Move: 36-34<br>Heavy (21+): 5 KISS, KLBJ, WKDF, WRXR, WZAT<br>Medium (14-20): 10 KRXX, KRZR, KTXQ, WDMA, WHJY, WKLC, WKQQ, WROV, WWDC, WZZR<br>Light (Under 14): 18 | <b>415/-5</b>    |

|  | Total Plays/Gain |
|--|------------------|
| <b>DON HENLEY</b><br><i>Through Your Hands (Revolution)</i><br>Total Stations: 33/Chart Move: 39-37<br>Heavy (21+): 5 KDKB, KFRQ, KYYS, WONE, WPYX<br>Medium (14-20): 7 KLPX, KMOD, WBAB, WEGR, WIZN, WKLC, WPLR<br>Light (Under 14): 21 | <b>398/-6</b>    |

|   | Total Plays/Gain |
|---|------------------|
| <b>MARILYN MANSON</b><br><i>Tourniquet (Nothing/Interscope)</i><br>Total Stations: 40<br>Heavy (21+): 1 KTUX<br>Medium (14-20): 5 KEGL, WKLO, WXRA, WZAT, WZTA<br>Light (Under 14): 34<br>New Airplay This Week: 4 KNCN, KUFO, WRCX, WZMT | <b>325/92</b>    |

|  | Total Plays/Gain |
|--|------------------|
| <b>WIDESPREAD PANIC</b><br><i>Hope In A Hopeless World (Capricorn/Mercury)</i><br>Total Stations: 38<br>Heavy (21+): 3 WAVF, WRXR, WZAT<br>Medium (14-20): 7 KMJX, KQRS, KTYD, WDMA, WIMZ, WNCD, WROQ<br>Light (Under 14): 28<br>New Airplay This Week: 9 KLBJ, KYYS, WBAB, WIMZ, WROV, WTAK, WTPA, WTUE, WVRK | <b>366/138</b>   |

|   | Total Plays/Gain |
|---|------------------|
| <b>SHERYL CROW</b><br><i>Everyday Is A Winding Road (A&amp;M)</i><br>Total Stations: 24<br>Heavy (21+): 5 KDKB, WARQ, WAVF, WBLM, WXRA<br>Medium (14-20): 7 KTYD, WCCC, WPYX, WVRK, WWDC, WZZO, WZZR<br>Light (Under 14): 12<br>New Airplay This Week: 2 KLAQ, KTYD | <b>305/57</b>    |

|   | Total Plays/Gain |
|---|------------------|
| <b>TYPE O NEGATIVE</b><br><i>Love You To Death (Roadrunner)</i><br>Total Stations: 35<br>Heavy (21+): 2 KTUX, WZAT<br>Medium (14-20): 4 KILO, KISS, KRAD, KUPD<br>Light (Under 14): 29<br>New Airplay This Week: 3 KRZZ, WCCC, WTXF | <b>355/8</b>     |

|   | Total Plays/Gain |
|---|------------------|
| <b>SOCIAL DISTORTION</b><br><i>When The Angels Sing (550 Music)</i><br>Total Stations: 33<br>Heavy (21+): 1 WZAT<br>Medium (14-20): 7 KILO, KRAD, KRXX, KUPD, WJRR, WWDC, WXRA<br>Light (Under 14): 25<br>New Airplay This Week: 5 KCAL, WCCC, WWDC, WZTA, WZZR | <b>280/87</b>    |

|  | Total Plays/Gain |
|--|------------------|
| <b>THE BLACK CROWES</b><br><i>Better When You're Not Alone (American/Reprise)</i><br>Total Stations: 18<br>Heavy (21+): 0<br>Medium (14-20): 1 WKLC<br>Light (Under 14): 17<br>New Airplay This Week: 7 KMOD, WAPL, WBLM, WEZX, WKLC, WTAK, WZZR | <b>96/75</b>     |

|  | Total Plays/Gain |
|--|------------------|
| <b>THE VERVE PIPE</b><br><i>The Freshmen (RCA)</i><br>Total Stations: 9<br>Heavy (21+): 1 WARQ<br>Medium (14-20): 2 WAAF, WKLO<br>Light (Under 14): 6<br>New Airplay This Week: 1 KDKB | <b>86/21</b>     |

|  | Total Plays/Gain |
|--|------------------|
| <b>THE VERVE PIPE</b><br><i>The Freshmen (RCA)</i><br>Total Stations: 9<br>Heavy (21+): 1 WARQ<br>Medium (14-20): 2 WAAF, WKLO<br>Light (Under 14): 6<br>New Airplay This Week: 1 KDKB | <b>86/21</b>     |

|  | Total Plays/Gain |
|--|------------------|
| <b>JONNY LANG</b><br><i>Lie To Me (A&amp;M)</i><br>Total Stations: 8<br>Heavy (21+): 0<br>Medium (14-20): 3 KEZO, KGGG, KQRS<br>Light (Under 14): 5<br>New Airplay This Week: 2 KLPX, KMOD | <b>82/22</b>     |

|  | Total Plays/Gain |
|--|------------------|
| <b>DAVE MATTHEWS BAND</b><br><i>Crash Into Me (RCA)</i><br>Total Stations: 31<br>Heavy (21+): 3 KTAL, KTYD, WARQ<br>Medium (14-20): 9 KLPX, WEZX, WHJY, WMMR, WPLR, WROV, WRXR, WWDC, WZAT<br>Light (Under 14): 19<br>New Airplay This Week: 3 WDV, WEGR, WSFL | <b>351/12</b>    |

|  | Total Plays/Gain |
|--|------------------|
| <b>NO DOUBT</b><br><i>Don't Speak (Trauma/Interscope)</i><br>Total Stations: 6<br>Heavy (21+): 3 KRAB, WPYX, WRXR<br>Medium (14-20): 1 WWDC<br>Light (Under 14): 2 | <b>121/2</b>     |

|  | Total Plays/Gain |
|--|------------------|
| <b>NO DOUBT</b><br><i>Don't Speak (Trauma/Interscope)</i><br>Total Stations: 6<br>Heavy (21+): 3 KRAB, WPYX, WRXR<br>Medium (14-20): 1 WWDC<br>Light (Under 14): 2 | <b>121/2</b>     |

|   | Total Plays/Gain |
|---|------------------|
| <b>GARBAGE</b><br><i>#1 Crush (Capitol)</i><br>Total Stations: 19<br>Heavy (21+): 6 KRAB, KTXQ, WARQ, WAVF, WRXR, WXRA<br>Medium (14-20): 3 KBPI, KTUX, WWDC<br>Light (Under 14): 10<br>New Airplay This Week: 1 KTUX | <b>261/19</b>    |

|   | Total Plays/Gain |
|---|------------------|
| <b>WILCO</b><br><i>Outtaste (Outta Mind) (Reprise)</i><br>Total Stations: 23<br>Heavy (21+): 0<br>Medium (14-20): 2 KTYD, WAPL<br>Light (Under 14): 21<br>New Airplay This Week: 3 KRAD, WARQ, WROQ | <b>134/24</b>    |

|  | Total Plays/Gain |
|--|------------------|
| <b>NO DOUBT</b><br><i>Don't Speak (Trauma/Interscope)</i><br>Total Stations: 6<br>Heavy (21+): 3 KRAB, WPYX, WRXR<br>Medium (14-20): 1 WWDC<br>Light (Under 14): 2 | <b>121/2</b>     |

|   | Total Plays/Gain |
|---|------------------|
| <b>FOUNTAINS OF WAYNE</b><br><i>Radiation Vibe (Scratchie/TAG/Atlantic)</i><br>Total Stations: 16<br>Heavy (21+): 2 WJRR, WXRA<br>Medium (14-20): 1 WWDC<br>Light (Under 14): 13<br>New Airplay This Week: 3 KBER, WSTZ, WWDC | <b>103/8</b>     |

|  | Total Plays/Gain |
|--|------------------|
| <b>★ CRAVIN' MELON</b><br><i>Come Undone (Mercury)</i><br>Total Stations: 8<br>Heavy (21+): 3 WAVF, WROQ, WRXR<br>Medium (14-20): 1 WARQ<br>Light (Under 14): 4<br>New Airplay This Week: 1 WSFL | <b>102/31</b>    |

|  | Total Plays/Gain |
|--|------------------|
| <b>★ THE BLACK CROWES</b><br><i>Better When You're Not Alone (American/Reprise)</i><br>Total Stations: 18<br>Heavy (21+): 0<br>Medium (14-20): 1 WKLC<br>Light (Under 14): 17<br>New Airplay This Week: 7 KMOD, WAPL, WBLM, WEZX, WKLC, WTAK, WZZR | <b>96/75</b>     |

|   | Total Plays/Gain |
|---|------------------|
| <b>★ SUBLIME</b><br><i>Santeria (Gasoline Alley/MCA)</i><br>Total Stations: 13<br>Heavy (21+): 0<br>Medium (14-20): 2 WWDC, WZAT<br>Light (Under 14): 11<br>New Airplay This Week: 2 WXRA, WZAT | <b>93/43</b>     |

Airpower awarded to those records which attain 800 detections for the first time. New airplay lists those stations registering six or more detections per week on a record for the first time. ★ Initial impact: records appearing on this page for the first time.





SONG ACTIVITY REPORTS

MM Broadcast Data Systems
Detailed song tracking information for the last 3 weeks for all songs showing increased play this week. Total plays and gain do not include video play. Markets listed in order of population.

For Week Ending January 19, 1997

Table with 12 columns: Song Title, Artist, Total Plays/Gain, and 12 market columns (MTV, KLOS, WRXC, etc.). Rows include: BETTER THAN EZRA (Desperately Wanting), BUSH (Greedy Fly), 1019/127 (A Long December), COUNTING CROWS (841/142), JOURNEY (345/133), and LIVE (1612/1368).

Table with 12 columns: Song Title, Artist, Total Plays/Gain, and 12 market columns (MTV, KLOS, WRXC, etc.). Rows include: MARILYN MANSON (325/92), DAVE MATTHEWS BAND (351/12), METALLICA (981/160), THE OFFSPRING (733/36), and TOM PETTY AND THE HEARTBREAKERS (578/81).



SONG ACTIVITY REPORTS



For Week Ending January 19, 1997

Detailed song tracking information for the last 3 weeks for all songs showing increased play this week. Total plays and gain do not include video play. Markets listed in order of population.

Table with 4 columns: Song Title, Artist, Total Plays/Gain, and Chart Move. Rows include SEMISONIC (465/10), SILVERCHAIR (1189/481), THE SMASHING PUMPKINS (460/86), SPONGE (1188/56), and STIR (1114/18).

Table with 4 columns: Song Title, Artist, Total Plays/Gain, and Chart Move. Rows include TONIC (616/278), TYPE O NEGATIVE (355/8), U2 (1174/369), THE WALLFLOWERS (1744/240), and WIDESPREAD PANIC (366/138).



For Week Ending January 19, 1997

Playlists supplied by Broadcast Data Systems' Radio Trac service. Songs ranked by number of plays in monitored week. Playlists are listed in order of TSA weekly curve, beginning with the highest-ranking station. Curves are updated twice yearly following the release of the Spring and Fall Arbitron surveys. The number of stations shown each week varies depending upon space.

WXRK

New York PD: Steve Kingston APD/MD: Alexa Tobin

Table with 2 columns: Rank and Song/Artist. Top entries include Sublime, What I Got and Bush, Swallowed.

KROQ

Los Angeles PD: Kevin Weatherly APD: Gene Sandblom

Table with 2 columns: Rank and Song/Artist. Top entries include Live, Lakini's Juice and Sublime, Sartenia.

WKQX

Chicago PD: Bill Gamble APD/MD: Mary Shurimans

Table with 2 columns: Rank and Song/Artist. Top entries include The Carrigans, Lovefool and Counting Crows, A Long December.

WPLY

Philadelphia PD: Chuck Tisa MD: Doug Kubinski

Table with 2 columns: Rank and Song/Artist. Top entries include Sublime, What I Got and No Doubt, Don't Speak.

WBCN

Boston VP/Prgrm: Oedipus MD: Carter Alan

Table with 2 columns: Rank and Song/Artist. Top entries include Live, Lakini's Juice and Silverchair, Abuse Me.

WHFS

Washington, DC PD: Robert Benjamin APD: Bob Waugh

Table with 2 columns: Rank and Song/Artist. Top entries include Silverchair, Abuse Me and U2, Discotheque.

WHYT

Detroit PD: Gareth Michaels APD/MD: Alex Tear

Table with 2 columns: Rank and Song/Artist. Top entries include 311, All Mixed Up and Sublime, What I Got.

WNNX

Atlanta PD: Brian Phillips APD: Leslie Fram

Table with 2 columns: Rank and Song/Artist. Top entries include No Doubt, Happy Now and Live, Lakini's Juice.

KITS

San Francisco VP/Prgrm: Richard Sands APD: Roland West

Table with 2 columns: Rank and Song/Artist. Top entries include Garbage, #1 Crush and Silverchair, Abuse Me.

KDGE

Dallas PD: Joel Folger MD: Mike Peer

Table with 2 columns: Rank and Song/Artist. Top entries include U2, Discotheque and Red Hot Chili Peppers, Love Rollercoaster.

KEGE

Minneapolis PD: John Lassman MD: Wade Linder

Table with 2 columns: Rank and Song/Artist. Top entries include The Carrigans, Lovefool and Counting Crows, A Long December.

WMMS

Cleveland PD: Bob Neumann APD: "Spaceman" Scott Hughes

Table with 2 columns: Rank and Song/Artist. Top entries include Bush, Greedy Fly and Presidents Of The United States, March.



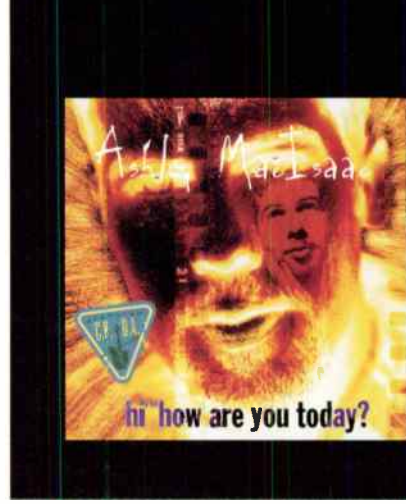
SoundsScan: Alternative New Artist chart - (13) - (7)

Table with 2 columns: Station and Rank. Top entries include WBCN 22X, WFNX 20X, WBRU 12X.

Table with 2 columns: Station and Rank. Top entries include ADDS: WHYT, WQBK, WGRD.

Ashley MacIsaac Sleepy Maggie

"Even after 300+ spins, we still get tons of calls when we play 'Sleepy Maggie'... The cross section of demos is unbelievable, young and old... When Ashley played in front of the station we broadcast it live so everyone could hear it and guess who showed up? Moms with kids, punks with pierces, guys in suits, and skaters in kilts."



http://www.ashtecord.com Produced by Pete Frellesk Produced by Michael Phillip Wojewoda Management: Josef S. Co. AM Canadian Heritage Patrimoine Canada © 1996 Ashtec Music Limited. Manufactured and marketed by A-H Records, Inc. All rights reserved.

POWER PLAYLISTS

For Week Ending January 19, 1997



Playlists supplied by Broadcast Data Systems Radio Track service. Songs ranked by number of plays in monitored week. Playlists are listed in order of TBA weekly count, beginning with the highest-counting station. Counts are updated twice weekly following the release of the Spring and Fall Arbitron surveys. The number of stations shown each week varies depending upon space.

CIMX Detroit Prgm. Mng. : Murray Brookshaw PD/MD: Vince Cannova. List of 30 songs with station, track number, and title.

WDRE Philadelphia OM/PD: Jim McGuinn MD: Elliot/Russell. List of 30 songs with station, track number, and title.

KOME San Jose OM: Ron Nenni PD/MD: Jay Taylor. List of 30 songs with station, track number, and title.

KPNT St. Louis PD: Alex Luke APD: Eric Schmidt. List of 30 songs with station, track number, and title.

KLYY Los Angeles VP Prog: Steve Blatter PD: Phil Manning. List of 30 songs with station, track number, and title.

KNDD Seattle PD: Rick Lambert MD: Marco Collins. List of 30 songs with station, track number, and title.

KTBZ Houston PD: Cruze MD: David Sadoff. List of 30 songs with station, track number, and title.

WMRQ Hartford PD: Jay Beau Jones MD: Dave Hill. List of 30 songs with station, track number, and title.

XTRA San Diego OM: Tim Dukes APD: Malcolm Ryker. List of 30 songs with station, track number, and title.

WENZ Cleveland PD/MD: Sean Robertson. List of 30 songs with station, track number, and title.

WXDX Pittsburgh PD: Ali Castellini MD: Lenny Diana. List of 30 songs with station, track number, and title.

WRZZ Indianapolis PD: Scott Jameson MD: Michael Young. List of 30 songs with station, track number, and title.

WLIR Long Island GM/Acting PD: John Caracciolo OM: Jim McGuinn. List of 30 songs with station, track number, and title.

KXPK Denver PD: Doug Clifton APD/MD: Gary Schoenwetter. List of 30 songs with station, track number, and title.

WLUM Milwaukee PD: Tommy Wilde APD: Chuck Summers. List of 30 songs with station, track number, and title.

WEDG Buffalo PD: John Hager MD: Rich Wall. List of 30 songs with station, track number, and title.

KWOD Sacramento PD: Ron Bunce. List of 30 songs with station, track number, and title.

XHRM San Diego MD: Brynn Capella. List of 30 songs with station, track number, and title.

KNRK Portland, OR PD: Mark Hamilton MD: Matt Souther. List of 30 songs with station, track number, and title.

WFNX Boston PD: Bill Pugh MD: Laurie Gail. List of 30 songs with station, track number, and title.

KZON Phoenix PD: Bill Pugh MD: Erika Smith. List of 30 songs with station, track number, and title.

KISF Kansas City PD: Jon Anthony MD: Jason Justice. List of 30 songs with station, track number, and title.

WNVE Rochester PD/MD: Erick Anderson. List of 30 songs with station, track number, and title.

WEND Charlotte PD: Jack Daniel MD: Kim Monroe. List of 30 songs with station, track number, and title.

POWER PLAYLISTS

For Week Ending January 19, 1997



Playlists supplied by Broadcast Data Systems. Radio track service. Songs ranked by number of plays in monitored week. Playlists are listed in order of TSM weekly count, beginning with the highest-counting station. Counts are updated twice weekly following the release of the Spring and Fall Arbitron surveys. The number of stations shown each week varies depending upon space.

KEDJ Phoenix PD: Shellie Hart APD/MD: Chris Patyk. Top 30 playlist including 'Local H, Bound For The Floor' and 'Cake, The Distance'.

KNRX Oklahoma City PD: Mke McCoy MD: Gero Pearson. Top 30 playlist including 'No Doubt, Don't Speak' and 'Bash, Swallowed'.

WQXA Harrisburg PD: John Moschitta MD: Scott McFadden. Top 30 playlist including 'Live, Lakini's Juice' and 'U2, Discotheque'.

WGRD Grand Rapids PD: Allan Fee MD: Margot Smith. Top 30 playlist including 'Live, Lakini's Juice' and 'U2, Discotheque'.

KMYZ Tulsa PD: Paul Kreigler MD: Greg Kocsack. Top 30 playlist including 'Stone Temple Pilots, Lady Picture Show' and 'Live, Lakini's Juice'.

WBRU Providence PD: Tim Schiavelli MD: Matt Maloney. Top 30 playlist including 'Live, Lakini's Juice' and 'Dave Matthews Band, Crash Into Me'.

WROX Norfolk PD: Perry Stone MD: Al Mitchell. Top 30 playlist including 'Live, Lakini's Juice' and 'U2, Discotheque'.

WPBZ West Palm Beach MD: Robert English. Top 30 playlist including 'No Doubt, Don't Speak' and 'U2, Discotheque'.

WDGE Providence PD: Brent Petersen MD: John Allers. Top 30 playlist including 'Live, Lakini's Juice' and 'U2, Discotheque'.

KCXX Riverside/San Bernardino OM/PD: Dwight Arnold MD: Bruce Pulley. Top 30 playlist including 'U2, Discotheque' and 'Sublime, What I Got'.

KGDE Omaha PD: Lynn Barstow. Top 30 playlist including 'Live, Lakini's Juice' and 'U2, Discotheque'.

KEDG Las Vegas PD: John Griffin MD: Freddy Snakeskin. Top 30 playlist including 'Garbage, #1 Crush' and 'The Smashing Pumpkins, Thirty-Three'.

WAQZ Cincinnati PD/MD: Matt Harris APD: Sterling Schiessler. Top 30 playlist including 'U2, Discotheque' and 'The Cardigans, Lovefool'.

WXEG Dayton PD: Jeff Stevens MD: Alan Rance. Top 30 playlist including 'The Wallflowers, One Headlight' and 'Fountains Of Wayne, Radiation Vibe'.

KTCL Denver PD: John Hayes. Top 30 playlist including 'The Cardigans, Lovefool' and 'Local H, Bound For The Floor'.

KREV Minneapolis PD: Kevin Cole MD: Shawn Stewart. Top 30 playlist including 'U2, Discotheque' and 'Garbage, #1 Crush'.

KXRK Salt Lake City PD: Mike Summers MD: Sean Ziebarth. Top 30 playlist including 'Live, Lakini's Juice' and 'Soul Caughing, Super Bon Bon'.

WWCD Columbus PD: Jane Purcell MD: Andy Davis. Top 30 playlist including 'Counting Crows, A Long December' and 'No Doubt, Don't Speak'.

WQBK Albany PD: Dan Binder MD: Kelli McNamara. Top 30 playlist including 'Bash, Swallowed' and 'Stone Temple Pilots, Lady Picture Show'.

WBZU Richmond PD: JJ Quest MD: Mike Scott. Top 30 playlist including 'Silverchair, Abuse Me' and 'Dave Matthews Band, Crash Into Me'.

WRXQ Memphis PD: Tony Williams MD: Dianna Gee. Top 30 playlist including '311, All Mixed Up' and 'Fountains Of Wayne, Radiation Vibe'.

KXTE Las Vegas PD: Mike Stern MD: Chris Ripley. Top 30 playlist including 'Live, Lakini's Juice' and 'The Offspring, All I Want'.

KENZ Salt Lake City PD: Bruce Jones MD: Dom Casual. Top 30 playlist including 'The Wallflowers, One Headlight' and 'The Cardigans, Lovefool'.

KROX Austin PD: Sara Trexler APD/MD: Lloyd "LA" Hought. Top 30 playlist including 'Garbage, #1 Crush' and 'The Cardigans, Lovefool'.



★ ★ ★ **AIRPOWER** ★ ★ ★

(Minimum 1,100 detections for the first time)

Total Plays/Gain

**LIVE 2275/1783**  
**Lakini's Juice (Radioactive/MCA)**  
Total Stations: 79/Chart Move: Debut 3  
Heavy (30+ plays): 39 CIMX, KEDJ, KEGE, KGDE, KLZR, KMYZ, KNDD, KNRX, KOMI, KPNT, KROQ, KTBB, KTEG, KXRK, KXTE, WAQZ, WBCN, WBRU, WDGE, WDRG, WEDG, WEND, WENZ, WFNX, WGRD, WHFS, WLUM, WMRO, WNVE, WPLA, WPLY, WQBK, WQXA, WRLG, WROX, WRXQ, WXZZ, WZRH, XTRA  
Medium (15-29): 29 KCXX, KDGE, KEDG, KISF, KITS, KLYY, KNNC, KNRK, KPOI, KREV, KROX, KTCL, KTOZ, KWOD, KXPK, WBZU, WEQX, WHYT, WKQX, WKRL, WMMS, WNNX, WPBZ, WRXQ, WRZX, WXDX, WXEG, WXNR, XHRM  
Light (Under 15): 11  
New Airplay This Week: 36 CIMX, KEDJ, KENZ, KFMA, KFRF, KICT, KISF, KITS, KJEE, KLYY, KLZR, KNNC, KNRK, KTOZ, KXRK, KXTE, WBRU, WCY, WDRG, WEDG, WEND, WENZ, WHYT, WMMS, WNNX, WOXY, WPBZ, WPLY, WRLG, WRZX, WXDX, WXEG, WXNR, WXZZ, WZRH, XHRM

**AIRPOWER BOUND**

Total Plays/Gain

**SUBLIME 1066/213**  
**Santeria (Gasoline Alley/MCA)**  
Total Stations: 63/Chart Move: 28-25  
Heavy (30+ plays): 10 CIMX, KHTY, KJEE, KLYY, KOMI, KROQ, KTEG, WBZU, WHFS, WKQX  
Medium (15-29): 25 KDGE, KEGE, KICT, KITS, KMYZ, KNDD, KNNC, KNRX, KXPK, KXRK, KXTE, WAQZ, WDRG, WENZ, WEQX, WGRD, WHYT, WLUM, WMRO, WNNX, WRLG, WRXQ, WZRH, XHRM, XTRA  
Light (Under 15): 28  
New Airplay This Week: 10 KPOI, KROX, KZON, WCY, WGRD, WNVE, WPLA, WROX, WRXQ, WXRK

**SHERYL CROW 1061/116**  
**Everyday Is A Winding Road (A&M)**  
Total Stations: 68/Chart Move: 27-26  
Heavy (30+): 6 KEGE, KPOI, KTOZ, WDRE, WWCD, WXZZ  
Medium (15-29): 28 KAEP, KDGE, KFMA, KGDE, KICT, KLYY, KNRK, KPNT, KROX, KXPK, WAQZ, WBRU, WBZU, WDGE, WEDG, WENZ, WEQX, WHFS, WHYT, WNNX, WPLA, WQBK, WQXA, WROX, WXDX, WXEG, WZRH, XHRM  
Light (Under 15): 34  
New Airplay This Week: 9 KCXX, KEDG, KFMA, KGDE, KMYZ, KNDD, KNNC, WEND, WMRO

**NINE INCH NAILS 1046/966**  
**The Perfect Drug (Nothing/Interscope)**  
Total Stations: 69/Chart Move: Debut 27  
Heavy (30+): 3 CIMX, KNRK, KXTE  
Medium (15-29): 30 KEDJ, KEGE, KITS, KLZR, KNDD, KOMI, KREV, KROQ, KROX, KTBB, KTEG, KXRK, WBCN, WBRU, WBZU, WDGE, WDRG, WEDG, WENZ, WEQX, WFNX, WGRD, WHFS, WKQX, WLUM, WMRO, WROX, WXEG, WXRK, WZRH  
Light (Under 15): 36  
New Airplay This Week: 43 CIMX, KCXX, KFMA, KFRF, KICT, KISF, KITS, KMYZ, KNDD, KNNC, KNRX, KPNT, KPOI, KREV, KROQ, KROX, KTBB, KTEG, KTOZ, KWOD, WBCN, WBRU, WBZU, WDGE, WEDG, WEND, WENZ, WEQX, WGRD, WKQX, WKRL, WMRO, WNNX, WNVE, WOXY, WPBZ, WPLA, WPLY, WRLG, WROX, WXEG, WXRK, WZRH

**SOUL COUGHING 808/18**  
**Super Bon Bon (Slash/Warner Bros.)**  
Total Stations: 55/Chart Move: 31-30  
Heavy (30+): 3 KEDJ, KNNC, KXRK  
Medium (15-29): 28 KDGE, KFMA, KISF, KJEE, KLZR, KNDD, KNRK, KNRX, KROQ, KROX, KTBB, KTCL, WBRU, WCY, WDRG, WENZ, WEQX, WFNX, WGRD, WKRL, WPBZ, WRLG, WROX, WRXQ, WXEG, WXRK, WZRH, XHRM  
Light (Under 15): 24  
New Airplay This Week: 1 KMYZ

**THE SUICIDE MACHINES 704/33**  
**No Face (Hollywood)**  
Total Stations: 57/Chart Move: 34-31  
Heavy (30+): 0  
Medium (15-29): 20 KFRF, KITS, KJEE, KLZR, KNNC, KNRK, KOMI, KPOI, KROQ, KXRK, KXTE, WEND, WFNX, WHYT, WMMS, WMRO, WNNX, WXEG, WZRH, XTRA  
Light (Under 15): 37  
New Airplay This Week: 2 KFMA, WDRE

**WEEZER 701/6**  
**The Good Life (DGC/Geffen)**  
Total Stations: 48/Chart Move: 33-32  
Heavy (30+): 1 WDRE

Medium (15-29): 24 KEGE, KISF, KJEE, KLZR, KMYZ, KNDD, KNNC, KNRK, KREV, KROX, KTOZ, KXRK, WBZU, WEND, WENZ, WEQX, WFNX, WKRL, WMMS, WRLG, WROX, WRXQ, WXEG, WZRH  
Light (Under 15): 23  
New Airplay This Week: 3 WBRU, WRXQ, WWCD

**SOCIAL DISTORTION 575/127**  
**When The Angels Sing (550 Music)**  
Total Stations: 47/Chart Move: Debut 38  
Heavy (30+): 2 KJEE, KTEG  
Medium (15-29): 14 KNRK, KNRX, KPNT, KREV, KXTE, WBCN, WDGE, WENZ, WMRO, WPBZ, WQXA, WRLG, WXEG, XTRA  
Light (Under 15): 31  
New Airplay This Week: 7 WBZU, WCY, WEDG, WEND, WNNX, WRLG, WRXQ

**REPUBLICA 526/61**  
**Drop Dead Gorgeous (deConstruction/RCA)**  
Total Stations: 40/Chart Move: Debut 39  
Heavy (30+): 0  
Medium (15-29): 18 KEDG, KFMA, KHTY, KICT, KJEE, KLYY, KNNC, KNRK, KPOI, KTCL, KXPK, WAQZ, WBCN, WEND, WKQX, WRXQ, WXEG, WZRH  
Light (Under 15): 22  
New Airplay This Week: 1 KHTY

**CHART BOUND**

Total Plays/Gain

**SPACE 496/170**  
**Female Of The Species (Gut Reaction/Universal)**  
Total Stations: 51  
Heavy (30+): 3 KROQ, KXRK, XHRM  
Medium (15-29): 11 KCXX, KLYY, KTCL, WBRU, WDRE, WENZ, WFNX, WHFS, WKQX, WXEG, XTRA  
Light (Under 15): 37  
New Airplay This Week: 8 KFMA, KTCL, WCY, WDRE, WEDG, WROX, WXEG, XTRA

**MARILYN MANSON 460/171**  
**Tourniquet (Nothing/Interscope)**  
Total Stations: 43  
Heavy (30+): 1 KNCC  
Medium (15-29): 6 KJEE, KXTE, WBZU, WCY, WENZ, WMMS  
Light (Under 15): 36  
New Airplay This Week: 11 CIMX, KEDJ, KGDE, KTBB, WDRE, WEND, WLUM, WNVE, WPLA, WQXA, WRXQ

**PRODIGY 429/180**  
**Firestarter (Mute-XL/Maverick/Warner Bros.)**  
Total Stations: 50  
Heavy (30+): 0  
Medium (15-29): 9 KXRK, WBRU, WBZU, WEQX, WFNX, WKQX, WLUM, WNNX, XHRM  
Light (Under 15): 41  
New Airplay This Week: 13 KFMA, KICT, KNCC, KROQ, WBZU, WCY, WDRE, WENZ, WHFS, WNVE, WPLA, WQBK, WZRH

**MATCHBOX 20 411/-23**  
**Long Day (Lava/Atlantic)**  
Total Stations: 20  
Heavy (30+): 2 KTBB, KWOD  
Medium (15-29): 13 KAEP, KDGE, KEGE, KGDE, KICT, KPNT, KROX, KZON, WGRD, WLUM, WMMS, WPLA, WZRH  
Light (Under 15): 5  
New Airplay This Week: 1 KEDG

**MUNDY 403/144**  
**To You I Bestow (Epic)**  
Total Stations: 45  
Heavy (30+): 0  
Medium (15-29): 9 KITS, KNDD, KNCC, KXRK, WBRU, WEQX, WMMS, WQBK, WRLG  
Light (Under 15): 36  
New Airplay This Week: 13 KFMA, KICT, KLZR, KMYZ, KOMI, KXPK, KXRK, WCY, WEND, WKRL, WXZZ, WZRH, XHRM

**EELS 390/81**  
**Rags To Rags (DreamWorks/Geffen)**  
Total Stations: 44  
Heavy (30+): 0  
Medium (15-29): 8 KICT, KLZR, KNRX, WBZU, WEND, WENZ, WMMS, WRXQ  
Light (Under 15): 36  
New Airplay This Week: 6 KFMA, KISF, KREV, KROX, KXRK, WBZU

**WILCO 383/101**  
**Outtasite (Outta Mind) (Reprise)**  
Total Stations: 29  
Heavy (30+): 0  
Medium (15-29): 10 KGDE, KROX, KTEG, WBRU, WENZ, WMMS, WNNX, WQXA, WWCD, WXEG  
Light (Under 15): 19  
New Airplay This Week: 5 KTCL, WAQZ, WEDG, WEQX, WQBK

**NO DOUBT 381/111**  
**Excuse Me Mr. (Trauma/Interscope)**  
Total Stations: 34  
Heavy (30+): 1 KJEE  
Medium (15-29): 11 KDGE, KEDJ, KITS, KLYY, KNDD, KNRK, KOMI, KTCL, KXTE, WCY, WXDX  
Light (Under 15): 22  
New Airplay This Week: 5 KPNT, KTBB, KTCL, WCY, WXRK

**★ CAKE 357/298**  
**I Will Survive (Capricorn/Mercury)**  
Total Stations: 39  
Heavy (30+): 0  
Medium (15-29): 7 KJEE, KLZR, KNCC, KROX, WDRG, WENZ, WNNX  
Light (Under 15): 32  
New Airplay This Week: 24 KHTY, KICT, KITS, KJEE, KLZR, KNCC, KNRX, KREV, KROX, KTCL, KXRK, KXTE, WCY, WDRG, WENZ, WEQX, WFNX, WGRD, WOXY, WPLA, WROX, WZRH, XHRM, XTRA

**R.E.M. 334/141**  
**Electrolite (Warner Bros.)**  
Total Stations: 27  
Heavy (30+): 0  
Medium (15-29): 11 KAEP, KICT, KLYY, KNDD, KTEG, KXRK, WAQZ, WBRU, WHYT, WMRO, WNNX  
Light (Under 15): 16  
New Airplay This Week: 7 KCXX, KICT, KTEG, WDRG, WEND, WOXY, WWCD

**★ VERUCA SALT 254/250**  
**Volcano Girls (Minty Fresh/Outpost/Geffen)**  
Total Stations: 42  
Heavy (30+): 0  
Medium (15-29): 5 CIMX, KEGE, KOMI, KPNT, KROQ  
Light (Under 15): 37  
New Airplay This Week: 15 CIMX, KEDG, KEGE, KMYZ, KNDD, KNCC, KOMI, KPNT, KREV, KROQ, KWOD, KXRK, KXTE, WDRE, WKQX

**THE PRESIDENTS OF THE UNITED STATES OF AMERICA 236/112**  
**Volcano (Columbia)**  
Total Stations: 26  
Heavy (30+): 0  
Medium (15-29): 6 KGDE, KJEE, KNDD, KOMI, WDGE, WXEG  
Light (Under 15): 20  
New Airplay This Week: 7 KGDE, WENZ, WKRL, WRLG, WROX, WXEG, WZRH

**BIG HEAD TODD & THE MONSTERS 230/73**  
**Resignation Superman (Revolution)**  
Total Stations: 24  
Heavy (30+): 0  
Medium (15-29): 8 KENZ, KGDE, KTCL, KXPK, WDRG, WEQX, WGRD, WPBZ  
Light (Under 15): 16  
New Airplay This Week: 5 KAEP, KGDE, WEND, WMMS, WOXY

**★ KULA SHAKER 226/169**  
**Hey Dude (Columbia)**  
Total Stations: 31  
Heavy (30+): 0

| MOST NEW AIRPLAY THIS WEEK  | No. Of Stations |
|---|-----------------|
| <b>NINE INCH NAILS</b><br><i>Perfect Drug (Nothing/Interscope)</i>      | 43              |
| <b>LIVE</b><br><i>Lakini's Juice (Radioactive/MCA)</i>                  | 36              |
| <b>CAKE</b><br><i>I Will Survive (Capricorn/Mercury)</i>                | 24              |
| <b>VERUCA SALT</b><br><i>Volcano Girls (Minty Fresh/Outpost/Geffen)</i> | 15              |
| <b>MUNDY</b><br><i>To You I Bestow (Epic)</i>                           | 13              |
| <b>PRODIGY</b><br><i>Firestarter (Mute-XL/Maverick/Warner Bros.)</i>    | 13              |

Medium (15-29): 6 KITS, KLZR, KPNT, KXRK, WBRU, WDRE  
Light (Under 15): 25  
New Airplay This Week: 12 KLZR, KNRK, KXRK, WBCN, WDRE, WENZ, WFNX, WPBZ, WQBK, WXEG, WZRH, XHRM

**DAVID BOWIE 172/50**  
**Little Wonder (Virgin)**  
Total Stations: 36  
Heavy (30+): 0  
Medium (15-29): 5 KNDD, KNRK, WDRE, WEQX, WFNX  
Light (Under 15): 31  
New Airplay This Week: 3 WDRE, WENZ, WMRO

**FUN LOVIN' CRIMINALS 170/58**  
**The Fun Lovin' Criminal (EMI)**  
Total Stations: 18  
Heavy (30+): 0  
Medium (15-29): 3 KXRK, WBCN, WMRO  
Light (Under 15): 15  
New Airplay This Week: 6 KCXX, KFMA, KLZR, WDRG, WNNX, WZRH

**THE VERVE PIPE 158/55**  
**The Freshmen (RCA)**  
Total Stations: 12  
Heavy (30+): 0  
Medium (15-29): 6 KLYY, KROQ, KTEG, WEND, WGRD, XHRM  
Light (Under 15): 6  
New Airplay This Week: 3 KNDD, KROQ, WHYT

**PAULA COLE 157/23**  
**Where Have All The Cowboys Gone? (Imago/Warner Bros.)**  
Total Stations: 15  
Heavy (30+): 0  
Medium (15-29): 6 KAEP, KENZ, KXPK, WBRU, WDGE, WXZZ  
Light (Under 15): 9  
New Airplay This Week: 1 KAEP

**★ BECK 156/118**  
**The New Pollution (DGC/Geffen)**  
Total Stations: 15  
Heavy (30+): 0  
Medium (15-29): 3 KNDD, KROQ, KXRK  
Light (Under 15): 12  
New Airplay This Week: 7 KEGE, KFMA, KICT, KOMI, KROQ, KTCL, WXRK

**★ FIONA APPLE 151/102**  
**Sleep To Dream (Clean Slate/Work)**  
Total Stations: 21  
Heavy (30+): 0  
Medium (15-29): 1 KHTY  
Light (Under 15): 20  
New Airplay This Week: 10 KFMA, KLYY, KOMI, KROQ, KROX, KTCL, WCY, WRLG, WXDX, XHRM

**MOBY 144/47**  
**That's When I Reach For My Revolver (Elektra/EEG)**  
Total Stations: 32  
Heavy (30+): 0  
Medium (15-29): 3 KXRK, WBCN, WFNX  
Light (Under 15): 29  
New Airplay This Week: 4 KISF, KITS, KXRK, WXRK

**RAGE AGAINST THE MACHINE 107/1**  
**People Of The Sun (Epic)**  
Total Stations: 26  
Heavy (30+): 0  
Medium (15-29): 1 WXRK  
Light (Under 15): 25

**★ REDD KROSS 103/53**  
**Stoned (This Way Up/Mercury)**  
Total Stations: 21  
Heavy (30+): 0  
Medium (15-29): 2 WNNX, WXEG  
Light (Under 15): 19  
New Airplay This Week: 4 KNCC, WENZ, WEQX, WXEG

**★ SQUIRREL NUT ZIPPERS 100/59**  
**Hell (Mammoth/Atlantic)**  
Total Stations: 33  
Heavy (30+): 0  
Medium (15-29): 2 KEGE, WFNX  
Light (Under 15): 31  
New Airplay This Week: 4 KEGE, KNCC, KROQ, WZRH

**BODEANS 91/7**  
**Hurt By Love (Slash/Reprise)**  
Total Stations: 7  
Heavy (30+): 0  
Medium (15-29): 2 KXPK, KZON  
Light (Under 15): 5  
New Airplay This Week: 1 WAQZ

**★ SNEAKER PIMPS 89/11**  
**6 Underground (Virgin)**  
Total Stations: 28  
Heavy (30+): 0  
Medium (15-29): 2 WFNX, WHFS  
Light (Under 15): 26

**★ OUR LADY PEACE 84/35**  
**Superman's Dead (Columbia)**  
Total Stations: 1  
Heavy (30+): 1 CIMX  
Medium (15-29): 0  
Light (Under 15): 0

**★ DRAMARAMA 80/13**  
**Anything, Anything (Rhino)**  
Total Stations: 19  
Heavy (30+): 0  
Medium (15-29): 1 KLYY  
Light (Under 15): 18

**★ TONIC 79/55**  
**Casual Affair (Polydor/A&M)**  
Total Stations: 9  
Heavy (30+): 1 KTOZ  
Medium (15-29): 1 KPNT  
Light (Under 15): 7  
New Airplay This Week: 4 KNCC, KTOZ, WGRD, WMMS

**★ JAMES 75/63**  
**She's A Star (Fontana/Mercury)**  
Total Stations: 14  
Heavy (30+): 0  
Medium (15-29): 3 KXRK, WDRE, WEQX  
Light (Under 15): 11  
New Airplay This Week: 3 WDRE, WENZ, WEQX

Monitor AIRPLAY

SONG ACTIVITY REPORTS

For Week Ending January 19, 1997

Broadcast Data Systems Detailed song tracking information for the last 3 weeks for all songs showing increased play this week. Total plays and gain do not include radio play. Markets listed in order of population.

BUSH 1543/240 Greedy Fly (Trauma/Interscope) Total Stations: 69 Chart Move: 19-10

CAKE 357/298 I Will Survive (Capricorn/Mercury) Total Stations: 39 Chart Move: 19-10

THE CARDIGANS 1527/152 Lovefool (Stockholm/Mercury) Total Stations: 63 Chart Move: 17-11

COUNTING CROWS 1822/136 A Long December (DGC/Geffen) Total Stations: 74 Chart Move: 8-6

SHERYL CROW 1061/116 Everyday Is A Winding Road (A&M) Total Stations: 68 Chart Move: 27-26

DEPECHE MODE 1447/127 Barrel Of A Gun (Reprise) Total Stations: 76 Chart Move: 18-15

EELS 390/81 Rags To Rags (DreamWorks/Geffen) Total Stations: 44 Chart Move: 24-23

LIVE 2275/1783 Lakini's Juice (Radioactive/MCA) Total Stations: 79 Chart Move: 26-3

MARILYN MANSON 460/171 Tourniquet (Nothing/Interscope) Total Stations: 43 Chart Move: 24-23

DAVE MATTHEWS BAND 1233/64 Crash Into Me (RCA) Total Stations: 65 Chart Move: 24-23

MUNDY 403/144 To You I Bestow (Epic) Total Stations: 45 Chart Move: 24-23

NINE INCH NAILS 1046/966 The Perfect Drug (Nothing/Interscope) Total Stations: 69 Chart Move: 24-23

NO DOUBT 381/111 Excuse Me Mr. (Trauma/Interscope) Total Stations: 34 Chart Move: 24-23

THE OFFSPRING 1439/142 All I Want (Columbia) Total Stations: 70 Chart Move: 21-16

THE PRESIDENTS OF THE UNITED STATES 236/112 Volcano (Columbia) Total Stations: 26 Chart Move: 24-23

For Week Ending January 19, 1997

Detailed song tracking information for the last 3 weeks...

PRODIGY 429/180

Firestarter (Mute-XL/Maverick/Warner Bros.)

Table with columns for station, song, and activity metrics for Prodigy.

R.E.M. 334/141

Electrolite (Warner Bros.)

Table with columns for station, song, and activity metrics for R.E.M.

REPUBLICA 526/61

Drop Dead Gorgeous (deConstruction/RCA)

Table with columns for station, song, and activity metrics for Republica.

SILVERCHAIR 1755/453

Abuse Me (Epic)

Table with columns for station, song, and activity metrics for Silverchair.

THE SMASHING PUMPKINS 2092/71

Thirty-Three (Virgin)

Table with columns for station, song, and activity metrics for The Smashing Pumpkins.

SOCIAL DISTORTION 575/127

When The Angels Sing (550 Music)

Table with columns for station, song, and activity metrics for Social Distortion.

SOUL COUGHLING 808/18

Super Bon Bon (Slash/Warner Bros.)

Table with columns for station, song, and activity metrics for Soul Coughling.

SPACE 496/170

Female Of The Species (Gut Reaction/Universal)

Table with columns for station, song, and activity metrics for Space.

SUBLIME 1066/213

Santeria (Gasoline Alley/MCA)

Table with columns for station, song, and activity metrics for Sublime.

THE SUICIDE MACHINES 704/33

No Face (Hollywood)

Table with columns for station, song, and activity metrics for The Suicide Machines.

U2 2641/659

Discotheque (Island)

Table with columns for station, song, and activity metrics for U2.

VERUCA SALT 254/250

Volcano Girls (Minty Fresh/Outpost/Geffen)

Table with columns for station, song, and activity metrics for Veruca Salt.

THE WALLFLOWERS 1682/141

One Headlight (Interscope)

Table with columns for station, song, and activity metrics for The Wallflowers.

WEEZER 701/6

The Good Life (DGC/Geffen)

Table with columns for station, song, and activity metrics for Weezer.

WILCO 383/101

Outtasilite (Outta Mind) (Reprise)

Table with columns for station, song, and activity metrics for Wilco.



## POWER PLAYLISTS™

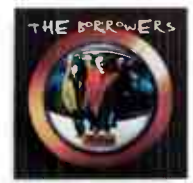
| STATION       | PD                                   | MD | TW LW   |   | TW LW  |                    | TW LW          |       | DETECTIONS                 |   |    |                                 |  |    |                                 |  |    |                                 |  |    |                                 |                                      |    |                                 |                                    |    |                                 |                                      |    |                                 |  |    |                                 |                                       |   |                                 |                           |   |                                 |  |   |    |                                |
|---------------|--------------------------------------|----|---------|---|--------|--------------------|----------------|-------|----------------------------|---|----|---------------------------------|--|----|---------------------------------|--|----|---------------------------------|--|----|---------------------------------|--------------------------------------|----|---------------------------------|------------------------------------|----|---------------------------------|--------------------------------------|----|---------------------------------|--|----|---------------------------------|---------------------------------------|---|---------------------------------|---------------------------|---|---------------------------------|--|---|----|--------------------------------|
|               |                                      |    | ARTIST  | TITLE   | ARTIST | TITLE              | ARTIST         | TITLE |                            |   |    |                                 |  |    |                                 |  |    |                                 |  |    |                                 |                                      |    |                                 |                                    |    |                                 |                                      |    |                                 |  |    |                                 |                                       |   |                                 |                           |   |                                 |  |   |    |                                |
| San Francisco | PD: Paul Marszalek<br>MD: Bill Evans |    | 1       | 21  | 1      | U2, Rattle and Hum | 1              | 24    | 1                          | Dave Matthews Band, Crash Into Me       |    |                                 |  |    |                                 |  |    |                                 |  |    |                                 |                                      |    |                                 |                                    |    |                                 |                                      |    |                                 |  |    |                                 |                                       |   |                                 |                           |   |                                 |  |   |    |                                |
|               |                                      |    | Chicago | VP/Programmer: Norm Winer<br>MD: Patty Martin |        | 1                  | 18             | 2     | David Bowie, Little Wonder | 2                                       | 18 | 2                               | ONE HEADLIGHT INTERSCOPE                   |    |                                 |  |    |                                 |  |    |                                 |                                      |    |                                 |                                    |    |                                 |                                      |    |                                 |  |    |                                 |                                       |   |                                 |                           |   |                                 |  |   |    |                                |
|               |                                      |    |         |   |        | Boston             | PD: Jim Herron |       | 1                          | 18                                      | 3  | Counting Crows, A Long December | 3  | 18 | 3                               | CRASH INTO ME RCA                      |    |                                 |  |    |                                 |                                      |    |                                 |                                    |    |                                 |                                      |    |                                 |  |    |                                 |                                       |   |                                 |                           |   |                                 |  |   |    |                                |
|               |                                      |    |         |   |        |                    |                |       | Los Angeles                | PD: Mike Morrison<br>MD: Nicole Sandler |    | 1                               | 18   | 4  | Counting Crows, A Long December | 4                                      | 13 | 4                               | HURT BY LOVE SLASH/REPRISE             |    |                                 |                                      |    |                                 |                                    |    |                                 |                                      |    |                                 |  |    |                                 |                                       |   |                                 |                           |   |                                 |  |   |    |                                |
|               |                                      |    |         |   |        |                    |                |       |                            |   |    | Minneapolis                     | PD: Lauren MacLeash<br>MD: Jane Fredericks |    | 1                               | 22                                     | 5  | Counting Crows, A Long December | 5                                      | 10 | 5                               | EVERYDAY IS A WINDING ROAD A&M       |    |                                 |                                    |    |                                 |                                      |    |                                 |  |    |                                 |                                       |   |                                 |                           |   |                                 |  |   |    |                                |
|               |                                      |    |         |   |        |                    |                |       |                            |   |    |                                 |  |    | Tampa                           | PD: Chuck Beck<br>APD/MD: Chris Taylor |    | 1                               | 22                                     | 6  | Counting Crows, A Long December | 6                                    | 10 | 6                               | JUST ANOTHER DAY MERCURY           |    |                                 |                                      |    |                                 |  |    |                                 |                                       |   |                                 |                           |   |                                 |  |   |    |                                |
|               |                                      |    |         |   |        |                    |                |       |                            |   |    |                                 |  |    |                                 |  |    | Detroit                         | PD: Murray Brookshaw<br>MD: Ann Delisi |    | 1                               | 30                                   | 1  | Counting Crows, A Long December | 7                                  | 14 | 7                               | THROUGH YOUR HANDS REVOLUTION        |    |                                 |  |    |                                 |                                       |   |                                 |                           |   |                                 |  |   |    |                                |
|               |                                      |    |         |   |        |                    |                |       |                            |   |    |                                 |  |    |                                 |  |    |                                 |  |    | Denver                          | PD: Dave Benson<br>MD: Scott Arbough |    | 1                               | 26                                 | 2  | Counting Crows, A Long December | 8                                    | 14 | 8                               | WHERE HAVE ALL THE COWBOYS GONE? IMAGO/WARNER BROS |    |                                 |                                       |   |                                 |                           |   |                                 |  |   |    |                                |
|               |                                      |    |         |   |        |                    |                |       |                            |   |    |                                 |  |    |                                 |  |    |                                 |  |    |                                 |                                      |    | Seattle                         | SM: Chris Mays<br>MD: Dean Carlson |    | 1                               | 17                                   | 3  | Counting Crows, A Long December | 9  | 14 | 9                               | DISCOTHEQUE ISLAND                    |   |                                 |                           |   |                                 |  |   |    |                                |
|               |                                      |    |         |   |        |                    |                |       |                            |   |    |                                 |  |    |                                 |  |    |                                 |  |    |                                 |                                      |    |                                 |                                    |    | St. Louis                       | PD: Scott Strang<br>MD: Mike Richter |    | 1                               | 26   | 4  | Counting Crows, A Long December | 10                                    | 7 | 10                              | BARELY BREATHING ATLANTIC |   |                                 |  |   |    |                                |
|               |                                      |    |         |   |        |                    |                |       |                            |   |    |                                 |  |    |                                 |  |    |                                 |  |    |                                 |                                      |    |                                 |                                    |    |                                 |                                      |    | Portland, OR                    | PD/MD: Carl Widing                                 |    | 1                               | 7                                     | 5 | Counting Crows, A Long December | 11                        | 2 | 11                              | HOPE IN A HOPELESS WORLD CAPRICORN/MERCURY |   |    |                                |
|               |                                      |    |         |   |        |                    |                |       |                            |   |    |                                 |  |    |                                 |  |    |                                 |  |    |                                 |                                      |    |                                 |                                    |    |                                 |                                      |    |                                 |  |    | Norfolk                         | PD: Perry Stone<br>MD: Holly Williams |   | 1                               | 27                        | 6 | Counting Crows, A Long December | 12   | 2 | 12 | YOU WERE MEANT FOR ME ATLANTIC |

The chart and Power Playlists are based on a national sample of data compiled by Broadcast Data Systems' Radio Track service. 26 Triple-A stations are electronically monitored 24 hours a day, 7 days a week. Songs ranked by number of detections in monitored week.

| THIS WEEK | LAST WEEK       | WKS. ON CHART | TITLE/LABEL/PROMOTION LABEL                         | ARTIST                                | TW  | LW  |
|-----------|-----------------|---------------|---|---------------------------------------|-----|-----|
| 1         | 2               | 9             | A LONG DECEMBER <b>★ ★ ★ NO. 1 ★ ★ ★</b> DGC/GEFFEN | COLINTING CROWS                       | 484 | 435 |
| 2         | 1               | 18            | ONE HEADLIGHT INTERSCOPE                            | THE WALLFLOWERS                       | 481 | 477 |
| 3         | 3               | 10            | CRASH INTO ME RCA                                   | DAVE MATTHEWS BAND                    | 421 | 417 |
| 4         | 4               | 13            | HURT BY LOVE SLASH/REPRISE                          | BODEANS                               | 374 | 378 |
| 5         | 6               | 10            | EVERYDAY IS A WINDING ROAD A&M                      | SHERYL CROW                           | 369 | 367 |
| 6         | 5               | 14            | JUST ANOTHER DAY MERCURY                            | JOHN MELLENCAMP                       | 342 | 377 |
| 7         | 8               | 6             | THROUGH YOUR HANDS REVOLUTION                       | DON HENLEY                            | 266 | 265 |
| 8         | 9               | 14            | WHERE HAVE ALL THE COWBOYS GONE? IMAGO/WARNER BROS  | PAULA COLE                            | 254 | 263 |
| 9         | 11              | 2             | DISCOTHEQUE ISLAND                                  | U2                                    | 248 | 219 |
| 10        | 7               | 26            | BARELY BREATHING ATLANTIC                           | DUNCAN SHEIK                          | 233 | 272 |
| 11        | 12              | 2             | HOPE IN A HOPELESS WORLD CAPRICORN/MERCURY          | WIDESPREAD PANIC                      | 217 | 186 |
| 12        | 14              | 3             | YOU WERE MEANT FOR ME ATLANTIC                      | JEWEL                                 | 211 | 172 |
| 13        | 19              | 2             | RESIGNATION SUPERMAN REVOLUTION                     | BIG HEAD TODD & THE MONSTERS          | 200 | 155 |
| 14        | 10              | 16            | BITTERSWEET ME WARNER BROS                          | R.E.M.                                | 184 | 221 |
| 15        | <b>NEW</b>      |               | ELECTROLITE WARNER BROS                             | R.E.M.                                | 180 | 114 |
| 16        | 18              | 2             | OUTTASITE (OUTTA MIND) REPRISE                      | WILCO                                 | 164 | 158 |
| 17        | 16              | 4             | HIGH HOPES COLUMBIA                                 | BRUCE SPRINGSTEEN & THE E STREET BAND | 163 | 166 |
| 18        | 15              | 25            | GIVE ME ONE REASON ELEKTRA/VEEG                     | TRACY CHAPMAN                         | 161 | 166 |
| 19        | <b>RE-ENTRY</b> |               | COUNTING BLUE CARS A&M                              | DISHWALLA                             | 159 | 147 |
| 20        | <b>NEW</b>      |               | SUNNY CAME HOME COLUMBIA                            | SHAWN COLVIN                          | 158 | 94  |

Records showing an increase in detections over the previous week, regardless of chart movement. A record which has been on the chart for more than 20 weeks will not receive a bullet, even if it registers an increase in detections. Airpower awarded to those records which attain 250 detections for the first time. If two records are tied in number of plays, the record being played on more stations is placed first. ©1997, Billboard/BPI Communications.

but a dog won't listen once she's tasted blood



### "BEAUTIFUL STRUGGLE"

Modern Rock: WOXY WNNX  
Mainstream Rock: KQRS WPLR WXRA

#### TOP 20 TRIPLE A!

On tour with WHY STORE:

- |                              |                            |
|------------------------------|----------------------------|
| January 30th Columbus, OH    | January 31st Dayton, OH    |
| February 1st Toledo, OH      | February 2nd Cleveland, OH |
| February 5th Bloomington, IL | February 6th Champaign, IL |
| February 7th Rock Island, IA | February 8th Ames, IA      |
| February 9th Austin, TX      |                            |


7243 8 37105 2  
The Borrowers debut album from GUARDIAN Records  
Produced by Jay Joyce  
Management: Mark Shimmel Management

**THE BORROWERS** **1** MUSIC FIRST **GUARDIAN**  
© 1996 GUARDIAN Records

For Week Ending January 19, 1997

| COMBINED ROCK MONITOR AIRPLAY |                 |     |   |                       |                     |                |      |                     |                | AIRPLAY THIS WEEK BY FORMAT |                     |                |      |                     |                |      |                     |                |      |
|-------------------------------|-----------------|-----|---|-----------------------|---------------------|----------------|------|---------------------|----------------|-----------------------------|---------------------|----------------|------|---------------------|----------------|------|---------------------|----------------|------|
| TW                            | LW              | WKS | TITLE (LABEL/PROMOTION LABEL)                         | ARTIST                | THIS WEEK           |                |      | LAST WEEK           |                |                             | MAINSTREAM          |                |      | MODERN              |                |      | TRIPLE-A            |                |      |
|                               |                 |     |   |                       | Audience (millions) | Detections No. | Rank | Audience (millions) | Detections No. | Rank                        | Audience (millions) | Detections No. | Rank | Audience (millions) | Detections No. | Rank | Audience (millions) | Detections No. | Rank |
| 1                             | 1               | 2   | DISCOTHEQUE (ISLAND)                                  | U2                    | 32.0485             | 4063           | 1    | 26.3241             | 3006           | 5                           | 7.8911              | 1174           | 8    | 22.1778             | 2641           | 1    | 1.9796              | 248            | 9    |
| 2                             | <b>NEW</b>      |     | LAKINI'S JUICE (RADIOACTIVE/MCA)                      | LIVE                  | 31.8892             | 3900           | 3    | 6.1722              | 737            | 70                          | 12.0270             | 1612           | 3    | 19.8012             | 2275           | 3    | 0.0610              | 13             | —    |
| 3                             | 3               | 10  | ONE HEADLIGHT (INTERSCOPE)                            | THE WALLFLOWERS       | 27.1946             | 3907           | 2    | 23.8470             | 3522           | 1                           | 10.5708             | 1744           | 1    | 13.3554             | 1682           | 8    | 3.2684              | 481            | 2    |
| 4                             | 6               | 8   | A LONG DECEMBER (DGC/GEFFEN)                          | COUNTING CROWS        | 24.1566             | 3147           | 5    | 21.6872             | 2820           | 6                           | 5.2110              | 841            | 20   | 15.7995             | 1822           | 6    | 3.1461              | 484            | 1    |
| 5                             | 10              | 2   | ABUSE ME (EPIC)                                       | SILVERCHAIR           | 23.9179             | 2944           | 7    | 19.1888             | 2010           | 16                          | 8.9101              | 1189           | 6    | 15.0078             | 1755           | 7    | —                   | —              | —    |
| 6                             | 5               | 15  | LADY PICTURE SHOW (ATLANTIC)                          | STONE TEMPLE PILOTS   | 22.0878             | 3210           | 4    | 23.0668             | 3465           | 2                           | 10.8791             | 1537           | 4    | 11.1010             | 1619           | 9    | 0.1077              | 54             | —    |
| 7                             | 4               | 16  | BLOW UP THE OUTSIDE WORLD (A&M)                       | SOUNDGARDEN           | 20.9879             | 3113           | 6    | 23.6120             | 3392           | 3                           | 11.1710             | 1652           | 2    | 9.8169              | 1461           | 14   | —                   | —              | —    |
| 8                             | 13              | 6   | GREEDY FLY (TRAUMA/INTERSCOPE)                        | BUSH                  | 19.3476             | 2562           | 11   | 17.6144             | 2195           | 13                          | 6.5814              | 1019           | 13   | 12.7662             | 1543           | 10   | —                   | —              | —    |
| 9                             | 7               | 11  | #1 CRUSH (CAPITOL)                                    | GARBAGE               | 19.3078             | 2689           | 8    | 20.2946             | 2748           | 7                           | 1.4924              | 261            | —    | 17.7404             | 2386           | 2    | 0.0750              | 42             | —    |
| 10                            | 11              | 9   | THIRTY-THREE (VIRGIN)                                 | THE SMASHING PUMPKINS | 18.6803             | 2677           | 9    | 19.0948             | 2515           | 11                          | 2.7478              | 460            | 32   | 15.4527             | 2092           | 4    | 0.4798              | 125            | —    |
| 11                            | 8               | 19  | BOUND FOR THE FLOOR (ISLAND)                          | LOCAL H               | 18.3561             | 2316           | 14   | 19.9150             | 2551           | 10                          | 6.7943              | 916            | 18   | 11.5578             | 1390           | 19   | 0.0040              | 10             | —    |
| 12                            | 2               | 14  | SWALLOWED (TRAUMA/INTERSCOPE)                         | BUSH                  | 18.0937             | 2542           | 12   | 24.5282             | 3262           | 4                           | 6.1275              | 1098           | 10   | 11.9635             | 1438           | 17   | 0.0027              | 6              | —    |
| 13                            | 12              | 22  | WHAT I GOT (GASOLINE ALLEY/MCA)                       | SUBLIME               | 17.5822             | 2362           | 13   | 18.5354             | 2638           | 9                           | 5.6298              | 876            | 19   | 11.7831             | 1418           | 18   | 0.1693              | 68             | —    |
| 14                            | 9               | 13  | ALL MIXED UP (CAPRICORN/MERCURY)                      | 311                   | 17.1016             | 2251           | 15   | 19.2586             | 2350           | 12                          | 1.4545              | 300            | —    | 15.2635             | 1893           | 5    | 0.3836              | 58             | —    |
| 15                            | 14              | 10  | DESPERATELY WANTING (SWELL/ELEKTRA/EEG)               | BETTER THAN EZRA      | 16.5323             | 2658           | 10   | 16.6404             | 2721           | 8                           | 6.7331              | 1060           | 12   | 9.2730              | 1503           | 12   | 0.5262              | 95             | —    |
| 16                            | 17              | 3   | ALL I WANT (COLUMBIA)                                 | THE OFFSPRING         | 15.6252             | 2172           | 16   | 14.8879             | 1994           | 17                          | 4.8236              | 733            | 22   | 10.8016             | 1439           | 16   | —                   | —              | —    |
| 17                            | 18              | 6   | LOVEFOOL (STOCKHOLM/MERCURY)                          | THE CARDIGANS         | 15.3088             | 1645           | 21   | 14.1617             | 1473           | 28                          | 0.0211              | 13             | —    | 14.7679             | 1527           | 11   | 0.5198              | 105            | —    |
| 18                            | 16              | 18  | HERO OF THE DAY (ELEKTRA/EEG)                         | METALLICA             | 15.0377             | 1735           | 19   | 14.9149             | 1870           | 19                          | 11.5400             | 1364           | 5    | 3.4977              | 371            | —    | —                   | —              | —    |
| 19                            | 19              | 7   | CRASH INTO ME (RCA)                                   | DAVE MATTHEWS BAND    | 14.2760             | 2005           | 17   | 13.2980             | 1925           | 18                          | 1.9463              | 351            | —    | 9.4926              | 1233           | 23   | 2.8371              | 421            | 3    |
| 20                            | 21              | 5   | EVERYDAY IS A WINDING ROAD (A&M)                      | SHERYL CROW           | 12.5284             | 1735           | 18   | 11.7007             | 1560           | 23                          | 1.5495              | 305            | —    | 8.7984              | 1061           | 26   | 2.1805              | 369            | 5    |
| 21                            | 15              | 16  | DON'T SPEAK (TRAUMA/INTERSCOPE)                       | NO DOUBT              | 11.9245             | 1715           | 20   | 15.1054             | 2109           | 14                          | 0.8171              | 121            | —    | 10.5030             | 1477           | 13   | 0.6044              | 117            | —    |
| 22                            | 32              | 2   | SANTERIA (GASOLINE ALLEY/MCA)                         | SUBLIME               | 10.6720             | 1184           | 37   | 9.1813              | 919            | 51                          | 0.4899              | 93             | —    | 10.1442             | 1066           | 25   | 0.0379              | 25             | —    |
| 23                            | 23              | 2   | BARREL OF A GUN (REPRISE)                             | DEPECHE MODE          | 10.5949             | 1480           | 25   | 10.7389             | 1341           | 31                          | 0.0685              | 26             | —    | 10.5011             | 1447           | 15   | 0.0253              | 7              | —    |
| 24                            | 22              | 32  | BURDEN IN MY HAND (A&M)                               | SOUNDGARDEN           | 10.4232             | 1230           | 34   | 10.8115             | 1270           | 37                          | 4.5158              | 586            | —    | 5.9074              | 644            | —    | —                   | —              | —    |
| 25                            | <b>NEW</b>      |     | THE PERFECT DRUG (NOTHING/INTERSCOPE)                 | NINE INCH NAILS       | 10.2115             | 1315           | 30   | 0.0000              | 0              | —                           | 1.7318              | 269            | —    | 8.4797              | 1046           | 27   | —                   | —              | —    |
| 26                            | 25              | 39  | TRIPPIN' ON A HOLE IN A PAPER HEART (ATLANTIC)        | STONE TEMPLE PILOTS   | 10.1565             | 1275           | 32   | 10.3365             | 1319           | 33                          | 4.5678              | 622            | —    | 5.5887              | 653            | —    | —                   | —              | —    |
| 27                            | 20              | 15  | THE DISTANCE (CAPRICORN/MERCURY)                      | CAKE                  | 9.7019              | 1603           | 22   | 12.7875             | 2014           | 15                          | 1.8469              | 304            | —    | 7.8162              | 1274           | 21   | 0.0388              | 25             | —    |
| 28                            | 26              | 14  | WOULD? (COLUMBIA)                                     | ALICE IN CHAINS       | 9.2695              | 1037           | 45   | 10.2503             | 1170           | 42                          | 4.5731              | 555            | 28   | 4.6959              | 480            | —    | 0.0005              | 2              | —    |
| 29                            | 24              | 6   | HAVE YOU SEEN MARY (COLUMBIA)                         | SPONGE                | 9.2428              | 1597           | 23   | 10.6385             | 1571           | 22                          | 6.4766              | 1188           | 7    | 2.7560              | 391            | —    | 0.0102              | 18             | —    |
| 30                            | 28              | 15  | STINKFIST (ZOO)                                       | TOOL                  | 8.9045              | 1286           | 31   | 9.9788              | 1474           | 27                          | 3.9389              | 599            | 24   | 4.9656              | 687            | 34   | —                   | —              | —    |
| 31                            | 30              | 7   | HELLO (MODERN/ATLANTIC)                               | POE                   | 8.8297              | 1553           | 24   | 9.8025              | 1584           | 21                          | 0.9520              | 174            | —    | 7.8690              | 1365           | 20   | 0.0087              | 14             | —    |
| 32                            | 29              | 10  | LONG DAY (LAVA/ATLANTIC)                              | MATCHBOX 20           | 8.8013              | 1377           | 27   | 9.8317              | 1531           | 24                          | 5.2641              | 929            | 17   | 3.4754              | 411            | —    | 0.0618              | 37             | —    |
| 33                            | 34              | 29  | DOWN (CAPRICORN/MERCURY)                              | 311                   | 8.5487              | 951            | 49   | 8.9959              | 1054           | 45                          | 1.5698              | 225            | —    | 6.9789              | 726            | —    | —                   | —              | —    |
| 34                            | 27              | 24  | OPEN UP YOUR EYES (POLYDORA/A&M)                      | TONIC                 | 8.3448              | 1257           | 33   | 10.0027             | 1589           | 20                          | 5.7362              | 828            | —    | 2.6083              | 427            | —    | 0.0003              | 2              | —    |
| 35                            | 37              | 7   | JUST ANOTHER DAY (MERCURY)                            | JOHN MELLENCAMP       | 8.0301              | 1324           | 29   | 8.4015              | 1375           | 30                          | 5.6063              | 948            | 16   | 0.1926              | 34             | —    | 2.2312              | 342            | 6    |
| 36                            | 36              | 44  | COUNTING BLUE CARS (A&M)                              | DISHWALLA             | 8.0134              | 1224           | 35   | 8.6450              | 1314           | 35                          | 3.4335              | 499            | —    | 3.6361              | 566            | —    | 0.9438              | 159            | 19   |
| 37                            | 38              | 60  | SANTA MONICA (WATCH THE WORLD DIE) (TIM KERR/CAPITOL) | EVERCLEAR             | 7.8512              | 1007           | 46   | 8.3772              | 1059           | 44                          | 3.5253              | 449            | —    | 4.3259              | 558            | —    | —                   | —              | —    |
| 38                            | <b>RE-ENTRY</b> |     | NAKED EYE (GRAND ROYAL/CAPITOL)                       | LUSCIOUS JACKSON      | 7.7753              | 1200           | 36   | 7.6924              | 1255           | 38                          | 0.3020              | 42             | —    | 7.3859              | 1116           | 24   | 0.0874              | 42             | —    |
| 39                            | 31              | 18  | BITTERSWEET ME (WARNER BROS.)                         | R.E.M.                | 7.7553              | 1052           | 42   | 9.2756              | 1379           | 29                          | 3.2570              | 386            | 38   | 3.0687              | 482            | —    | 1.4296              | 184            | 14   |
| 40                            | 35              | 8   | RADIATION VIBE (SCRATCHIE/TAG/ATLANTIC)               | FOUNTAINS OF WAYNE    | 7.6131              | 1387           | 26   | 8.6763              | 1497           | 26                          | 0.6767              | 103            | —    | 6.8788              | 1261           | 22   | 0.0576              | 23             | —    |

Records showing an increase in audience over the previous week, regardless of chart movement. Rankings broken down by mainstream, modern and triple-A formats (on right side of this page) correspond to charts printed in this week's Monitor and therefore rankings do not exist for recurrences and records below No. 40 (No. 20 for triple-A). Audience computed by cross-referencing exact times of airplay with Arbitron listener data. ©1997, Billboard/BPI Communications.




## SOCIAL DISTORTION

### "WHEN THE ANGELS SING"

**Debut! (38) Modern Rock Monitor**  
575 Spins (+127) 2,8 Million Audience

**Spin Leaders:**  
**WBCN 21x 99X 16x WMRQ 20x KTEG 34x WPBZ 25x KXTE 21x**  
**KNRK 21x KREV 26x KWOD 17x KPNT 17x WXEG 24x WRLG 18x**

**25 ROCK STATIONS COULDN'T WAIT!**  
**Including: KISS! WRCX! WWDC! WZTA! KIOZ!**  
**KSHE! KUPD! WIYY! KCAL! KQRC! KRXQ!**



your eyes are burning holes thru me.  
I'm gasoline. I'm burning clean.  
20th century go to sleep,  
you're pleistocene. that is obscene.

you are the star tonite  
your sun electric outasight  
your light eclipsed the moon tonite  
electrolite.  
you're outasight.

if I ever want to fly  
Mulholland drive.  
I am alive.  
Hollywood is under me.  
I'm Martin Sheen.  
I'm Steve McQueen.  
I'm Jimmy Dean.

you are the star tonite  
your sun electric outasight  
your light eclipsed the moon tonite  
electrolite.  
you're outasight.

if you ever want to fly  
Mulholland drive.  
up in the sky  
stand on a cliff and look down there.  
don't be scared.  
I am alive.

you are alive.  
you are alive.

you are the star tonite  
your sun electric outasight  
your light eclipsed the moon tonite  
electrolite.  
you're outasight.

20th century go to sleep.  
really deep. we won't blink.  
your eyes are burning holes thru me.  
I'm not scared. I'm out of here.  
I'm not scared. I'm out of here.

# ELECTROLITE r.e.m.

from the album NEW ADVENTURES IN HI-FI

**365 Modern Rock Spins (+164)  
One of the most added!  
On Over 40 Modern Rock Stations**

|                  |      |         |      |     |
|------------------|------|---------|------|-----|
| Early Believers: | 99X  | 23X     | WMRQ | 22X |
|                  | WHYT | 25X     | WBRU | 17X |
|                  | KNDD | 20X     | WAQZ | 20X |
|                  | KXRK | 26X ADD |      |     |

Adds: KTCL, WROX, 89X, KXPK, WGRG, CFNY, WXEG, WEQX, WEJE, WWBX, KQXR, WNFZ, WCYY, WNTX, KORB



Produced by Scott Litt & R.E.M.  
www.wbr.com/radio  
©1996 R.E.M. All rights reserved.

**30 Modern Rock Monitor  
824 BDS Spins (+17)**

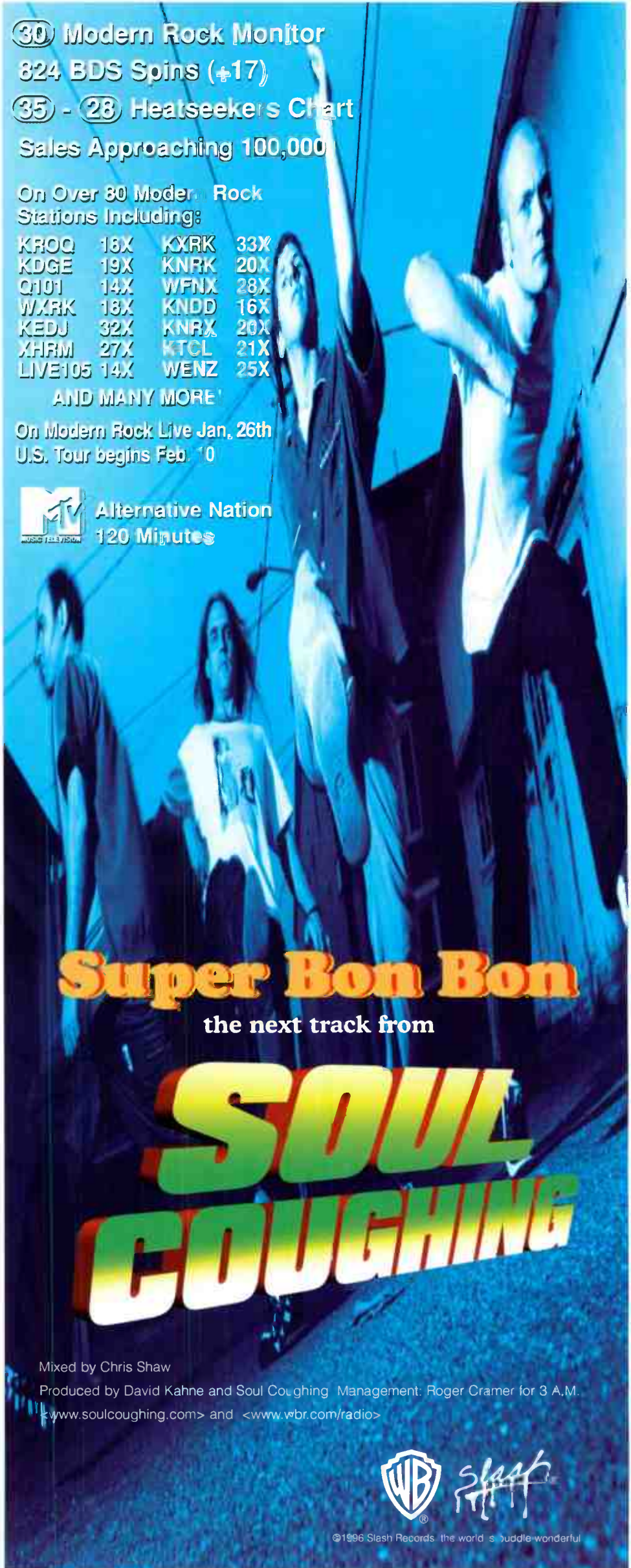
**35 - 28 Heatseekers Chart  
Sales Approaching 100,000**

**On Over 80 Modern Rock  
Stations Including:**

|         |     |      |     |
|---------|-----|------|-----|
| KROQ    | 16X | KXRK | 33X |
| KDGE    | 19X | KNRK | 20X |
| Q101    | 14X | WFMX | 28X |
| WXRK    | 18X | KNDD | 16X |
| KEDJ    | 32X | KNRX | 20X |
| XHRM    | 27X | KTCL | 21X |
| LIVE105 | 14X | WENZ | 25X |

AND MANY MORE!

On Modern Rock Live Jan. 26th  
U.S. Tour begins Feb. 10



**Super Bon Bon**

the next track from

**SOUL  
COUGHING**

Mixed by Chris Shaw

Produced by David Kahne and Soul Cougning Management: Roger Cramer for 3 A.M.

<www.soulcoughing.com> and <www.wbr.com/radio>



©1996 Slash Records. the world's riddle-wonderful

| THIS WEEK | LAST WEEK       | WKS. ON CHART | MAINSTREAM   |                                 | DETECTIONS |      |  |
|-----------|-----------------|---------------|--|---------------------------------|------------|------|--|
|           |                 |               | TITLE/LABEL/PROMOTION LABEL                        | ARTIST                          | TW         | LW   |  |
|           |                 |               | <b>*** No. 1 ***</b>                               |                                 |            |      |  |
| 1         | 3               | 11            | ONE HEADLIGHT INTERSCOPE<br><i>1 week at No. 1</i> | THE WALLFLOWERS                 | 1744       | 1504 |  |
| 2         | 1               | 16            | BLOW UP THE OUTSIDE WORLD A&M                      | SOUNDGARDEN                     | 1652       | 1754 |  |
| 3         | <b>NEW</b>      |               | <b>*** AIRPOWER ***</b>                            |                                 |            |      |  |
|           |                 |               | LAKINI'S JUICE HADRONIC/INFLMCA                    | LIVE                            | 1612       | 244  |  |
| 4         | 2               | 15            | LADY PICTURE SHOW ATLANTIC                         | STONE TEMPLE PILOTS             | 1537       | 1629 |  |
| 5         | 4               | 20            | HERO OF THE DAY ELEKTRA/EEG                        | METALLICA                       | 1364       | 1468 |  |
| 6         | 21              | 2             | <b>*** AIRPOWER ***</b>                            |                                 |            |      |  |
|           |                 |               | ABUSE ME (EPIC)                                    | SILVERCHAIR                     | 1189       | 708  |  |
| 7         | 7               | 13            | HAVE YOU SEEN MARY COLUMBIA                        | SPONGE                          | 1188       | 1132 |  |
| 8         | 19              | 2             | DISCOTHEQUE ISLAND                                 | U2                              | 1174       | 805  |  |
| 9         | 8               | 13            | LOOKING FOR AWARE/CAPITOL                          | STIR                            | 1114       | 1096 |  |
| 10        | 5               | 14            | SWALLOWED TRAUMA/INTERSCOPE                        | BUSH                            | 1098       | 1416 |  |
| 11        | 6               | 12            | HALF THE WORLD ANTHEM/ATLANTIC                     | RUSH                            | 1097       | 1192 |  |
| 12        | 10              | 10            | DESPERATELY WANTING SWELL/ELEKTRA/EEG              | BETTER THAN EZRA                | 1060       | 1026 |  |
| 13        | 17              | 6             | GREEDY FLY TRAUMA/INTERSCOPE                       | BUSH                            | 1019       | 892  |  |
| 14        | 12              | 10            | CAN'T GET THIS STUFF NO MORE WARNER BROS.          | VAN HALEN                       | 982        | 998  |  |
| 15        | 18              | 3             | KING NOTHING ELEKTRA/EEG                           | METALLICA                       | 981        | 821  |  |
| 16        | 13              | 10            | JUST ANOTHER DAY MERCURY                           | JOHN MELLENCAMP                 | 948        | 966  |  |
| 17        | 9               | 16            | LONG DAY LAVA/ATLANTIC                             | MATCHBOX 20                     | 929        | 1053 |  |
| 18        | 14              | 19            | BOUND FOR THE FLOOR ISLAND                         | LOCAL H                         | 916        | 959  |  |
| 19        | 16              | 15            | WHAT I GOT GASOLINE ALLEY/MCA                      | SUBLIME                         | 876        | 928  |  |
| 20        | 22              | 6             | <b>*** AIRPOWER ***</b>                            |                                 |            |      |  |
|           |                 |               | A LONG DECEMBER DGC/GEFFEN                         | COUNTING CROWS                  | 841        | 699  |  |
| 21        | 15              | 16            | ME WISE MAGIC WARNER BROS.                         | VAN HALEN                       | 783        | 935  |  |
| 22        | 23              | 3             | ALL I WANT COLUMBIA                                | THE OFFSPRING                   | 733        | 697  |  |
| 23        | <b>NEW</b>      |               | CASUAL AFFAIR POLYDOR/A&M                          | TONIC                           | 616        | 338  |  |
| 24        | 25              | 19            | STINKFIST ZOO                                      | TOOL                            | 599        | 677  |  |
| 25        | 32              | 4             | CHANGE THE LOCKS WARNER BROS.                      | TOM PETTY AND THE HEARTBREAKERS | 578        | 497  |  |
| 26        | 26              | 10            | BANG BANG RCA                                      | ZZ TOP                          | 571        | 612  |  |
| 27        | 27              | 9             | TRIP FREE LIFE EMI                                 | THE HAZIES                      | 570        | 611  |  |
| 28        | 24              | 22            | WOULD? COLUMBIA                                    | ALICE IN CHAINS                 | 555        | 677  |  |
| 29        | 20              | 15            | GROW YOUR OWN REPRISE                              | DARLAHOOD                       | 552        | 734  |  |
| 30        | 35              | 2             | F.N.T. MCA   | SEMISONIC                       | 465        | 455  |  |
| 31        | 33              | 2             | THE WAKE-UP BOMB WARNER BROS.                      | R.E.M.                          | 465        | 476  |  |
| 32        | <b>NEW</b>      |               | THIRTY-THREE VIRGIN                                | THE SMASHING PUMPKINS           | 460        | 374  |  |
| 33        | 31              | 8             | STUCK ON YOU SLASH/WARNER BROS.                    | FAILURE                         | 449        | 527  |  |
| 34        | 36              | 2             | OFF HE GOES EPIC                                   | PEARL JAM                       | 415        | 420  |  |
| 35        | 34              | 5             | FIRE WATER BURN REPUBLIC/GEFFEN                    | BLOODHOUND GANG                 | 413        | 470  |  |
| 36        | 28              | 17            | CLIMB THAT HILL WARNER BROS.                       | TOM PETTY AND THE HEARTBREAKERS | 400        | 555  |  |
| 37        | 39              | 2             | THROUGH YOUR HANDS REVOLUTION                      | DON HENLEY                      | 398        | 404  |  |
| 38        | 29              | 17            | BITTERSWEET ME WARNER BROS.                        | R.E.M.                          | 386        | 547  |  |
| 39        | <b>RE-ENTRY</b> |               | PRETTY NOOSE A&M                                   | SOUNDGARDEN                     | 369        | 373  |  |
| 40        | <b>RE-ENTRY</b> |               | 6TH AVENUE HEARTACHE INTERSCOPE                    | THE WALLFLOWERS                 | 369        | 378  |  |

| THIS WEEK | LAST WEEK  | WKS. ON CHART | MODERN                                       |                       | DETECTIONS |      |  |
|-----------|------------|---------------|--|-----------------------|------------|------|--|
|           |            |               | TITLE/LABEL/PROMOTION LABEL                  | ARTIST                | TW         | LW   |  |
|           |            |               | <b>*** No. 1 ***</b>                         |                       |            |      |  |
| 1         | 3          | 2             | DISCOTHEQUE ISLAND<br><i>1 week at No. 1</i> | U2                    | 2641       | 1982 |  |
| 2         | 1          | 10            | #1 CRUSH CAPITOL                             | GARBAGE               | 2386       | 2461 |  |
| 3         | <b>NEW</b> |               | <b>*** AIRPOWER ***</b>                      |                       |            |      |  |
|           |            |               | LAKINI'S JUICE HADRONIC/INFLMCA              | LIVE                  | 2275       | 492  |  |
| 4         | 2          | 9             | THIRTY-THREE VIRGIN                          | THE SMASHING PUMPKINS | 2092       | 2021 |  |
| 5         | 4          | 15            | ALL MIXED UP CAPRICORN/MERCURY               | 311                   | 1893       | 1939 |  |
| 6         | 8          | 7             | A LONG DECEMBER DGC/GEFFEN                   | COUNTING CROWS        | 1822       | 1686 |  |
| 7         | 20         | 2             | ABUSE ME EPIC                                | SILVERCHAIR           | 1755       | 1302 |  |
| 8         | 14         | 8             | ONE HEADLIGHT INTERSCOPE                     | THE WALLFLOWERS       | 1682       | 1541 |  |
| 9         | 7          | 15            | LADY PICTURE SHOW ATLANTIC                   | STONE TEMPLE PILOTS   | 1619       | 1772 |  |
| 10        | 19         | 6             | GREEDY FLY TRAUMA/INTERSCOPE                 | BUSH                  | 1543       | 1303 |  |
| 11        | 17         | 6             | LOVEFOOL STOCKHOLM/MERCURY                   | THE CARDIGANS         | 1527       | 1375 |  |
| 12        | 12         | 11            | DESPERATELY WANTING SWELL/ELEKTRA/EEG        | BETTER THAN EZRA      | 1503       | 1597 |  |
| 13        | 5          | 16            | DON'T SPEAK TRAUMA/INTERSCOPE                | NO DOUBT              | 1477       | 1852 |  |
| 14        | 10         | 15            | BLOW UP THE OUTSIDE WORLD A&M                | SOUNDGARDEN           | 1461       | 1638 |  |
| 15        | 18         | 3             | BARREL OF A GUN REPRISE                      | DEPECHE MODE          | 1447       | 1320 |  |
| 16        | 21         | 3             | ALL I WANT COLUMBIA                          | THE OFFSPRING         | 1439       | 1297 |  |
| 17        | 6          | 14            | SWALLOWED TRAUMA/INTERSCOPE                  | BUSH                  | 1438       | 1840 |  |
| 18        | 11         | 24            | WHAT I GOT GASOLINE ALLEY/MCA                | SUBLIME               | 1418       | 1623 |  |
| 19        | 13         | 19            | BOUND FOR THE FLOOR ISLAND                   | LOCAL H               | 1390       | 1583 |  |
| 20        | 15         | 10            | HELLO MODERN/ATLANTIC                        | POE                   | 1365       | 1407 |  |
| 21        | 9          | 18            | THE DISTANCE CAPRICORN/MERCURY               | CAKE                  | 1274       | 1651 |  |
| 22        | 16         | 10            | RADIATION VIBE SCRATCHIE/TAG/ATLANTIC        | FOUNTAINS OF WAYNE    | 1261       | 1379 |  |
| 23        | 24         | 10            | CRASH INTO ME RCA                            | DAVE MATTHEWS BAND    | 1233       | 1169 |  |
| 24        | 23         | 14            | NAKED EYE GRAND ROYAL/CAPITOL                | LUSCIOUS JACKSON      | 1116       | 1171 |  |
| 25        | 28         | 3             | SANTERIA GASOLINE ALLEY/MCA                  | SUBLIME               | 1066       | 853  |  |
| 26        | 27         | 5             | EVERYDAY IS A WINDING ROAD A&M               | SHERYL CROW           | 1061       | 945  |  |
| 27        | <b>NEW</b> |               | THE PERFECT DRUG NOTHING/INTERSCOPE          | NINE INCH NAILS       | 1046       | 80   |  |
| 28        | 22         | 12            | LOVE ROLLERCOASTER GEFFEN                    | RED HOT CHILI PEPPERS | 1038       | 1199 |  |
| 29        | 26         | 8             | FIRE WATER BURN REPUBLIC/GEFFEN              | BLOODHOUND GANG       | 943        | 1039 |  |
| 30        | 31         | 7             | SUPER BON BON SLASH/WARNER BROS.             | SOUL COUGHING         | 808        | 790  |  |
| 31        | 34         | 4             | NO FACE HOLLYWOOD                            | THE SUICIDE MACHINES  | 704        | 671  |  |
| 32        | 33         | 4             | THE GOOD LIFE DGC/GEFFEN                     | WEEZER                | 701        | 695  |  |
| 33        | 25         | 14            | TATVA COLUMBIA                               | KULA SHAKER           | 697        | 1084 |  |
| 34        | 30         | 18            | STINKFIST ZOO                                | TOOL                  | 687        | 797  |  |
| 35        | 29         | 21            | I WAS WRONG 550 MUSIC                        | SOCIAL DISTORTION     | 682        | 811  |  |
| 36        | 35         | 5             | OFF HE GOES EPIC                             | PEARL JAM             | 607        | 669  |  |
| 37        | 36         | 25            | NOVOCAINE FOR THE SOUL DREAMWORKS/GEFFEN     | EELS                  | 597        | 649  |  |
| 38        | <b>NEW</b> |               | WHEN THE ANGELS SING 550 MUSIC               | SOCIAL DISTORTION     | 575        | 448  |  |
| 39        | <b>NEW</b> |               | DROP DEAD GORGEOUS RCA                       | REPUBLICA             | 526        | 465  |  |
| 40        | 32         | 9             | STUCK ON YOU SLASH/WARNER BROS.              | FAILURE               | 519        | 758  |  |

Records showing an increase in detections over the previous week, regardless of chart movement. A record which has been on either chart for more than 20 weeks will not receive a bullet, even if it registers an increase in detections. Airpower awarded to those records which attain 800 detections (mainstream) or 1,100 (modern) for the first time. If two records are tied in number of plays, the record being played on more stations is placed first. Records below the top 20 are removed from the chart after 26 weeks.

**NINE INCH NAILS "THE PERFECT DRUG"**  
**PRODUCED BY TRENT REZNOR**  
 FROM THE NOTHING/INTERSCOPE SOUNDTRACK "LOST HIGHWAY"  
 SOUNDTRACK PRODUCED BY TRENT REZNOR  
 EXECUTIVE PRODUCED BY DAVID LYNCH  
**MOST ADDED!**  
**BIG PHONES EVERYWHERE!**  
**HEAVY**  
**ALBUM IN STORES 2/18**  
**rolling**  
 ©1996 LOST HIGHWAY PRODUCTIONS, INC. AND THREE PICTURES PRODUCTION COMPANY. ALL RIGHTS RESERVED. FOR PROMOTIONAL USE ONLY. NOT FOR SALE. INTD/C-90090.