

ROCK ■ AIRPLAY Monitor

• We Listen To Radio •

April 18, 1997 \$4.95 Volume 4 • No. 16

ROCK HIGHLIGHTS

MAINSTREAM

#1

COLLECTIVE SOUL

Precious Declaration (ATLANTIC)

★★★ AIRPOWER ★★★

NO RECORDS QUALIFIED FOR AIRPOWER THIS WEEK

NEW RELEASES

AEROSMITH • Hole In My Soul (COLUMBIA)
AUTOMATIC • What If... (550 MUSIC)
BABY CHAOS • Kicking Things (ATLANTIC)
FOO FIGHTERS • Monkey Wrench (ROSWELL/CAPITOL)
MING TEA • BBC (HOLLYWOOD)
SEVEN MARY THREE • Rocktown (MAMMOTH/ATLANTIC)
SKYSCRAPER • Never Again (EDEL AMERICA)
WIDESPREAD PANIC • Tall Boy (CAPRICORN/MERCURY)

MODERN

#1

U2

Staring At The Sun (ISLAND)

★★★ AIRPOWER ★★★

DEPECHE MODE • It's No Good (MUTE/REPRISE)

NEW RELEASES

BABY CHAOS • Kicking Things (ATLANTIC)
CATHERINE • Cotton Candy High (TVT)
COWARD • I Don't Care (ELEKTRA/EEG)
FOO FIGHTERS • Monkey Wrench (ROSWELL/CAPITOL)
MING TEA • BBC (HOLLYWOOD)
SEVEN MARY THREE • Rocktown (MAMMOTH/ATLANTIC)

TRIPLE A

#1

U2

Staring At The Sun (ISLAND)

★★★ AIRPOWER ★★★

NO RECORDS QUALIFIED FOR AIRPOWER THIS WEEK

Triple-A Mornings Don't Have To Be Music Only, But They Usually Are

by Marc Schifman

Triple-A lays claim to diverse music and an intelligent audience with adult sensibilities. What it still doesn't have, for the most part, are high-profile morning shows. Triple-A PDs think the format can support foreground morning shows in theory, but most have opted to go the music-intensive route, if only because of their own market situations.

There's no inherently triple-A morning show, says KINK Portland, Ore., PD Carl Widing. "I don't think you can look at the format and say, 'Your morning show needs to be these things if you're triple-A.' There are, I'm sure, morning shows on triple-As that get closer to a Mark and Brian approach. There are morning shows that can be almost completely music-intensive. And there are morning shows that can be NPR. Whatever fits the market and what that station is trying to do is what's right."

Triple-A WXRC Charlotte broke the format's Howard Stern barrier this week. WTTS Indianapolis PD Rich Anton believes, "There's no reason why triple-As couldn't have a high-profile morning show," he says. "Everybody has a [mindset] of 'I don't know if somebody like Howard Stern would work on a triple-A.' Maybe for some triple-As,

not for another triple-A, maybe."

At KGSR Austin, Texas, PD Jody Denberg's morning team consists of host Kevin Connor, recently arrived news reporter Beth, and special-features reporter Cecilia Nasti. "We try to pitch our station to the conscious listener," Denberg says. "Perhaps the one that might actually read *Utne Reader* or at least the daily paper. We view our main competition in the morning as NPR and Morning Edition... The thing that's lacking there is they can't give you the local angle, so that's what we do. We try to be an adjunct to that, but more locally skewed. Although it is a music-intensive morning show, we do have some features and information."

At KGSR, Monday is devoted to an Andy Rooney-like "Crooked Look at Sports," with Texas Monthly editor Joe Nick Patoski. That's followed by "High-Tech Tuesday," with computer and World Wide Web site information, and health-oriented "Wellness Wednesday." Thursdays feature former councilwoman Bridget Shea, "who comes on and says provocative things from the left," and movie guy Kevin Phinney hosts Fridays. There's also a Monday morning "Around Austin" segment that focuses on various places in the region, and musical features, such

Continued on page 5

Monitor Classifieds

pg. 6

MUSIC TELEVISION
ACTIVE

M2
ROCK/ALTERNATIVE
TOP 5



featuring

WHERE YOU GET LOVE

KROQ ADD

MODERN TOP 10

WBCN 99X WPLY 91X
KISF KGDE KNRX WXEG

TRIPLE A DEBUT (20)

KFOG HEAVY ROTATION

MAINSTREAM TOP 10

WWDC WLWQ WJRR WARQ
WAVF WPLR WROV WXRA

OVER 9.6 MILLION LISTENERS AND GROWING
40,000 SCANNED IN LESS THAN 2 WEEKS

ON TOUR NOW!!!

Russell Carter
Artist Management
Lettering Roger Dean ©1997



Volcano Entertainment, L.L.C.

Produced by
Brendan O'Brien & Matthew Sweet
Mixed by Brendan O'Brien



Da Funk

New! KNDD WXEG KKDM

Already On: KROQ Q101 LIVE 105 KDGE
XHRM KTCL WFNX WENZ
KCRW X96 GROOVE RADIO

*from the debut album
Homework*

**Immediate retail reaction in Los Angeles
22 - 240 - 456 pieces after two week on KROQ!**

**Three weeks on Live 105 and sales
spike 23 - 243 - 303 pieces!**

All tracks written, composed and produced by
Thomas Bangalter
& Guy-Manuel de Homem-Christo
for Daft Trax.

<http://www.virginrecords.com>
AOL Keyword: Virgin Records



©1997 Daft Trax, under exclusive license
to Virgin France/Virgin Records America, Inc.

RADIOACTIVE

Gannett Exits Radio, Sells 5 To Evergreen

Gannett bows out of the radio business, as the Evergreen/Chancellor Media monster picks up its last five stations—top 40 KHKS (Kiss 106.1) Dallas, country KKBQ-AM-FM Houston, and R&B WGCI-AM-FM Chicago—for a reported \$340 million. Simultaneously, Evergreen will spin off classical KDFC San Francisco and AC WPNT/modern AC WLUP Chicago to Bonneville, which already owns crosstown rock-based AC WTMX. That deal is worth \$205 million. Then, ABC will pick up the concern's jazz WJZW Washington, D.C., and top 40/rhythm WDRQ Detroit.

Meanwhile, triple-A KFOG San Francisco parent Susquehanna spends \$44 million on Evergreen's 107.7 frequency, home of top 40 KYLD (Wild 107.7) and the KSAN call letters. KYLD will relocate from 107.7 to the 94.9 frequency currently occupied by country KSAN, whose calls (and possible new format) will end up on 107.7.

In other sales news, Clear Channel picks up six Mobile, Ala., stations, including album WRKH, from Capitol Broadcasting for \$24 million.

FORMATS: ALL MOD ADCONS

American Radio Systems uncorks another in its growing modern AC empire—the new WAQB (the Zone) Rochester, N.Y. Rick MacKenzie moves over as PD from the APD slot at sister WCMF. Randy Lane is consulting.

Triple-A WTTS Indianapolis PD Rich Anton is phasing out the "progressive radio" slogan on the station, opting instead for "quality rock, real variety." No musical changes are involved.

MANAGEMENT: BEDI RALEIGH OPS DIR

Bob Bedi, who has been on-site consultant of WZZU Raleigh, N.C., since its flip to classic hits, is named director of operations for Clear Channel Raleigh. He remains PD of WZZU and will supervise R&B WQOK, WFXC, and WFXK and R&B oldies WDUR, WQOK/WZZU GSM Diane Rahman becomes station manager for WFXC/WFXK and director of sales for all four properties.

Album WDVV/modern WXDX Pittsburgh OM Gene Romano is exiting the stations to join Jacor. Album KEGL Dallas GM Donna Fadal exits.

With album WMMR under Greater Media's umbrella, classic hits WMGK sales manager Michael Weinstein is now WMMR GSM.

Modern KKND New Orleans GM Tom Kennedy, who also oversaw Clear Channel's country and top 40 stations there, exits.

Album WPYX Albany, N.Y., OM Fred Horton becomes OM of country WGXK Memphis.

Album WROV Roanoke, Va., OM Kenny Shelton relinquishes the title to concentrate on PD duties at country sister WYYD.

Classic rock KHBG Santa Rosa, Calif., names morning man Aaron Machado OM.

Former Inside Radio president Steve Butler launches the Haddonfield, N.J.-based RadioPix, which will produce video products for radio.

PEOPLE: WYST STAFFS UP

Album WYST (97 Rock) Detroit debuts its staff April 21. Mark Thompson, most recently at sister WYSP Philadelphia and previously APD/MD/nights at crosstown album WRIF, joins for mid-days. As reported last week, Millen does indeed join for afternoons from rival CIMX. Gonzo Greg, last in mornings at album KCAL Riverside, Calif., joins for nights. Modern WENZ Cleveland night jock Erin Carmen is MD. WMMS Cleveland MD Matt Surrena is programming assistant. Mitch Todd becomes production director.

The Chicago Sun-Times reports that WRCX (Rock 103.5) morning host Mancow Muller has signed a deal with HBO Independent Productions to develop a network comedy pilot. He also adds mornings at modern WDGE Providence, R.I.

WXRC Charlotte, N.C., adds Howard Stern for mornings. With the recent departure of PD Anthony Michaels, MD Greg Hills is interim PD.

GM Dave Lingafelt says the station will slowly become a more "mass-appeal" triple-A.

Jay Gleason, MD/middayer at WTPT (the Planet) Greenville, S.C., joins FMQB, replacing recently exited Ray Koob. Gleason's wife, Charlie Maxx, exits promotion duties. Craig DeBolt from crosstown top 40 WFBC-FM joins as production director. WROV PD Buzz Casey is now consulting WTPT and modern WOSC Ocean City, Md.

WBTZ Columbus night jock (and former morning host) Suzy Waud exits. Call 614-299-6869.

With Slammin' Sam leaving afternoons at KATT Oklahoma City for late nights at WFBQ (Q95) Indianapolis, middayer Jack Daniels takes afternoons. Blade Runner returns for nights.

Classic rock KGB San Diego veteran Coe Lewis returns for afternoons from country rival KUPR.

Modern KXPK Denver unveils a new morning show: afternoon host Jackie Selby and P/T Chuck Woodford replace the exiting Mari Szatkowski and Pete MacKay. New APD Eric Schmidt replaces Selby. Lalaine moves from P/T to nights. The station has re-tooled its music, picking up the tempo and focusing more actively on 25-34s.

Recently arrived album KTUX Shreveport, La., PD Paul Cannell takes afternoons at the station.

Top 40 WZPL Indianapolis night jock Adam Ritz has resigned, reportedly for nights across the street at modern WRZX.

PD Mike Lee, recently arrived at album WDRK Panama City, Fla., brings in Chris Malone for mid-days. Brian Kendrick joins for afternoons from nights at country WPAP. Overnighter Dan the Man takes nights. Lee shifts WDRK from the broad mainstream to an "active rock stance."

Jacor's Dr. Judy picks up affiliates moderns KROX Austin, Texas, and WROX Norfolk, Va.

David Redelberger exits classic rock WING-FM/top 40 WGTZ Dayton, Ohio's promotion department for Jacor's Columbus, Ohio, albums WLWQ and WAZU/modern WZAZ as marketing director. WGTZ PD Mary Franco exits. WING-AM-FM/WGTZ OM Michael Luczak expands his duties for now to cover Franco's duties.

Modern AC WKSI Greensboro, N.C., taps MD/afternoons Jeff Cushman from WOSC for the same title and duties. Modern WNNX (99X) Atlanta's ex-promotion director Tobi Lyons exits for the same at crosstown country WKHX-FM/WYAY. Jennifer Netch, last promo director at N/T WWRC Washington, D.C., joins WNNX for same.

Dave King, most recently at album CKLZ Kellowna, B.C., becomes production director for classic KKLZ Las Vegas, replacing Andre Zampaneli, who heads to album KURR Salt Lake City as production director. Also at KURR, Robin Roth crosses town from P/T at album KBER to take on mid-days, and P/T Kayvon is upped to nights.

At classic rock WMEQ Eau Claire, Wis., night jock Rob Scott replaces exited Hans Evins in afternoons. Album WAPL Appleton, Wis., night host Susan Currie exits. T&Rs to PD Garrett Hart.

Album KEYJ Abilene, Texas, P/T Frank Paine takes overnights. Morning co-host J.D. Payne exits.

Australian Nick Monroe joins modern KWOD Sacramento, Calif., for night duties. He last did afternoons at top 40 XHTZ San Diego.

Mark Abuzzahab picks up P/T work with triple-A KTCZ Minneapolis. Triple-A WXKR Toledo, Ohio, picks up a quartet of P/T, with Jenny and Donnie joining right from school, Anna Michaels returning to radio after a break from the biz, and McFly from crosstown oldies WRQN. Meanwhile, WXKR has lost morning co-host Steve Duval to local TV, leaving Mickey Morgret solo in mornings.

SW Networks launches its classic/album rock network, offering daily show prep, image production, movie drops, entertainment news, and artist bios. WAXQ New York, WRRK Pittsburgh, and WWRX Providence, R.I., are the first affiliates.

Barbara Silber joins MediaAmerica as director of affiliate relations. She was with SJS Entertainment. Westwood One Radio Networks director of creative services Renee Casis exits.

Monitor Names Hosten, Guynn To Senior Posts

Heston Hosten and Jon Guynn have been named to new senior positions on the Airplay Monitors by Howard Lander, president of the Billboard Music Group.

Hosten, who is leaving his post as director of radio and charts for Broadcast Data Systems (BDS), has been named Airplay Monitor editor in chief, responsible for editorial content in the four editions of Airplay Monitor. Hosten, a five-year veteran of BDS, worked his way up from administrative assistant to R&B administrator before being named to his present post two years ago. Before joining BDS, he majored in public administration at John Jay College of Criminology and business administration at LaGuardia College.

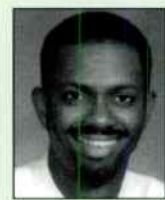
Hosten has served as BDS' chief liaison with the Airplay Monitor publications and was responsible for dramatically increasing the number of monitored stations in several formats. In his new capacity, he will be responsible, in part, for creating a greater synergy between the two organizations. He'll work with Airplay Monitor editor Sean Ross and the Airplay Monitor managing

editors to create a greater focus on the BDS information that is at the heart of Airplay Monitor.

Guynn, currently national advertising manager for the Airplay Monitors, is promoted to general manager. He retains his sales duties while assuming responsibility for Airplay Monitor business operations, including production, marketing, finance, and circulation.

After working for IBM in Toledo, Ohio, and The News-Herald in Cleveland, Guynn joined Billboard in May 1989 as advertising sales representative, based in New York. He relocated to Los Angeles in 1992, when he was named Billboard's Western advertising manager. He became Airplay Monitor's first full-time employee when he was named national advertising manager in 1993.

Both positions take effect May 5 and report to Lander, who also serves as publisher of Billboard. "This reorganization ensures the Monitor publications of enthusiastic and talented leadership that will enable us to continue growing this important operating division of the Music Group," said Lander.



Hosten



Guynn

WINTER 1997 ARBITRONS

12-plus overall average quarter hour shares. (#) indicates Arbitron market rank. Copyright 1997, Arbitron Ratings Co. May not be quoted or reproduced without the prior written permission of Arbitron.

Table with columns for Call, Format, W '96, Sp '96, Su '96, Fa '96, W '97 and lists of stations for NEW YORK, LOS ANGELES, CHICAGO, and NASSAU-SUFFOLK, N.Y.

PERSONNEL FILE BY ANTHONY COLOMBO

Bloom Exits Capitol; TTV Promotes Two

Capitol VP of promotion Ritch Bloom will exit soon, reportedly to head promotion at Revolution. TTV national alternative radio promo manager John Perrone and national radio promo manager Gary Jay are now both national director of alternative/adult radio promo. Guardian national promo director Susanne White is now senior director of promotion. Island L.A. local promo rep David Barbis, now Polydor West Coast regional director of promotion, is replaced by Sue Walters from PGD Northeast branch sales/marketing. Premiere Radio Networks' Stacy Dorf is Elektra Denver local promo rep.



WATCHING THE DETECTIONS

BY HESTON HOSTEN



BDS Info: Many Ways To Play

On a daily basis, the most popular report accessed by BDS customers is the Song Activity report, but there's a wide variety of other information available that can be utilized in making daily decisions. There are some reports that can give you a big picture on a song or market, while other reports can give specific information on songs or stations. The following is a brief description of a few reports that you may not be aware of.

TRACKING REPORTS

The Tracking report and the Enhanced Tracking report detail all stations playing and — unlike the Song Activity report — not playing a specific song. Cumulative plays are listed for each station. It is helpful when you want to see which stations supported a project more than their rivals. The tracking report includes total plays to date for any song, including those whose Song Activity reports are no longer being printed in Airplay Monitor.

SONG BY DAYPART

This report provides a station-by-station breakdown of stations playing a specified song by daypart: 6-10 a.m., 10 a.m.-3 p.m., 3-7 p.m., 7 p.m.-midnight, and midnight-6 a.m. It lets you know whether a song's spins are really when folks can hear them, especially when you look at the audience details shown for each daypart. The daypart report is particularly helpful when working Billboard's Hot R&B Singles and Hot 100 Singles chart, which are based on audience and sales, not spins.

SONG COMPARISON REPORT

Developed last year, the Song Comparison

report presents two songs side by side within the same format. This is a useful report for similar records, for comparing an act's first and second singles, or for seeing whether your 30 spins or your competitor's 30 spins represent more audience. Instead of pulling two Song Activity reports on different titles, you can have all the information on one report.

FORMAT-BUILDING/ ROLLING CHARTS

The Building Format chart shows an entire panel for less than a seven-day period. You can see the entire BDS panel of reporters sorted by plays or listeners. You can use it on Friday to get a picture of the chart week thus far. Or use the Rolling charts to see a seven-day sample anytime during the week. Building Format charts help you to see where a song will debut or predict if it will be top 10 by the following Monday.

CUSTOM REPORTS

Did you know BDS can group sites any way you choose? Split up the country according to your own tracking sheets or use the "master regions" employed by various retail chains across the country. Also, BDS can process your reports while you sleep. BDS can also set you up with a script to print all your reports before you walk into the office. And for those who hate faxing, BDS reports can be E-mailed or imported to other programs.

Many of these reports were created by users who made us aware of their needs. Please keep giving us feedback as we develop new ways of analyzing BDS data. For more information about the aforementioned reports, please call our hot line at 800-688-4634.



CHEET SHEET

BY MARK MARONE

Solace For Soundgarden Fans

While fans search for clues that might lead to an explanation of **Soundgarden's** breakup last week, supporters can take solace in the fact that this exit took place while the band was at its prime—a much better end than the often-regrettable conclusion to many once-great musical careers. According to an insider, the band members, who were notoriously unhappy with relentless touring, were just burnt from the cumulative drain of 12 years together. Just a day before the official press release, **Kim Thayil** told a friend of the exasperation the band members felt with having to "fire up this huge machine" anytime they wanted to do anything.

Instead, the group chose to leave a 12-year legacy intact (outlasting the length of time the **Beatles** or **Led Zeppelin** were together). While Soundgarden's stature most certainly will be deliberated by pundits, there can be no doubt that as the original "Seattle scene" band (and the first on a major label), the group was largely responsible for paving the way for the grunge movement of the early '90s. The band's two EPs, five albums, many B-sides, and soundtrack and compilation contributions show that Soundgarden's creative well never ran dry or fell victim to the self-indulgence that has tarnished many a career.

It's also true that the split spares us the bitterness that follows a drug or alcohol casualty. Too often, creative people such as **Cobain**, **Hendrix**, **Joplin**, or even **Andrew Wood**, who was **Chris Cornell's** one-time roommate, have had their careers cut tragically short. The members of Soundgarden, always outspoken against the glorification of drugs, didn't end their joint career as victims.

As it stands, Cornell, Thayil, **Matt Cameron**, and **Ben Shepherd** are signed to A&M individually. It's not yet clear what their plans will be or if there is any unreleased material available for future release. Fans can only hope that these musicians find new musical voices hereafter.

Summer Festivals Heat Up

Early word on the two perennial summer tours indicates a bit of a departure in content from previous years' lineups. After much speculation, the following have been confirmed to appear on the seventh annual Lollapalooza tour's main stage: **Tool**, **Korn**, the **Prodigy** (for part of the tour), **Snoop Doggy Dogg**, **Tricky**, and **Jon Spencer Blues Explosion**. Completing the lineup will be a world music-type act to open the show and possibly two other unconfirmed artists. Side-stage acts confirmed at press time are the **Pugs** and **Failure**. Definitive dates were not available, but the tour is expected to open mid-June and will run through mid-August.

Not to be outdone, the previously hippie-flavored H.O.R.D.E. tour will feature a heavier bill than its past five lineups. Appearing with headliner **Neil Young** on the main stage will be **Primus** and **Morphine**, with **Big Head Todd & the Monsters** joining for some dates. Confirmed for the side stage are **Widespread Panic**, **Soul Coughing** and **Ani DiFranco**. **Kula Shaker** is considering joining the bill as well. The 35-date H.O.R.D.E. tour starts up July 12 at the Gorge in Washington and will run through September. Most of the venues will be outdoor amphitheaters; a few dates will take place on open fields.

In addition to the **Sarah McLachlan**-helmed Lilith Fair Festival, two other newcomers make their debut this summer. The second Ozz-fest '97—the impetus coming from the final two dates of **Ozzy Osbourne's** tour last year, which featured all-day festival lineups using the same name—will feature a lineup of contemporary heavy rock bands along with the **Black Sabbath** reunion of Osbourne, **Tony Iommi**, and **Geezer Butler**, with **Mike Bordin** from **Faith No More** on drums. The outdoor shed tour begins May 24 in Bristow, W.Va., and ends June 29 in San Bernardino, Calif.; there'll be a June 15 date at Giant Stadium in East Rutherford, N.J. In addition to Osbourne's headline and the Sabbath reunion, the lineup for the main stage is **Pantera**, **Marilyn Manson** (on selected dates), **Type O Negative**, **Fear Factory**, **Machine Head**, and **Powerman 5000**. A second-stage theme area called Never Never Land will feature revolving 20-minute sets from **Drain STH**, **Downset**, **Sloburn**, and others in addition to a wide variety of attractions and interactive exhibitions. Ticket prices will range from premium seats at \$45 to lawn seats \$27.50 (price includes a \$5 handling charge).

Iggy Pop headlines the Skool Music R.O.A.R. tour (which stands for Revelation of Alternative Rhythms) beginning May 24 in Omaha, Neb. The lineup features **Sponge**, **Reverend Horton Heat**, **Tonic**, **Bloodhound Gang**, **Linda Perry**, **Ryan Downe**, and **Treadmill Track Star** and will carry an average ticket price of about \$20. Added value comes in the form of a high-tech fun-and-games center called the Lifestyles Experience Village (LEV). Featuring all sorts of interactive games including a Sony Playstation and an Iwerks virtual-reality theater, the LEV also boasts wild sporting competitions such as human bowling, sumo wrestling, gladiator jousting, and Velcro fly-walls.

Return Of An American Band



Classic rock WAXQ (Q104.3) New York held its Spring Benefit concert for the Bosnian Relief Fund at the Beacon Theatre, with Grand Funk Railroad reuniting for the event. Shown, from left, are Q104.3's Matt DeVoti; Grand Funk's Mark Farner, Don Brewer, and Mel Schacher; and Q104.3's Donna Donna, PD Kurt Johnson and APD/MD Corey Natko. Promotion director Scott Lief is in front.

ON THE AIR

NEW STATIONS AND OTHER REPORTER CHANGES FROM BDS & AIRPLAY MONITOR

Effective this week, WBZU Richmond, Va., rejoins the modern rock panel after an absence due to technical problems. KQPT Sacramento, Calif., moves from the triple-A panel to the adult top 40 panel. There are now 78 modern reporters and 25 triple-A reporters.

EDITOR-IN-CHIEF: HESTON HOSTEN
 EDITOR: SEAN ROSS
 MANAGING EDITOR: MARC SCHIFFMAN
 MAINSTREAM ROCK/TRIPLE A CHART MANAGER: ANTHONY COLOMBO
 MODERN ROCK CHART MANAGER: MARK MARONE
 WRITER/REPORTER: DANA HALL
 CONTRIBUTOR: KEN BARNES
 CHART PRODUCTION MANAGER: MICHAEL CUSSON
 ASST. CHART PRODUCTION MANAGER: ALEX VITOLIN
 EDITORIAL PRODUCTION MANAGER: BARRY BISHIN
 ASSOC. EDITORIAL PRODUCTION MANAGER: MARCIA REPINSKI
 EDITORIAL PRODUCTION: MADELINE CARROLL, SUSAN CHICOLA,
 MARC GIAQUINTO, SARAH JOHNSON, MARIA MANLICIC
 COPY EDITOR: CARL ROSEN
 ADVERTISING PRODUCTION MANAGER: LYDIA MIKULKO
 ASSOC. ADVERTISING PRODUCTION MANAGER: CINDEE WEISS
 ADVERTISING ART DIRECTOR: RAY CARLSON

GENERAL MANAGER: JON GUYNN
 ADVERTISING SALES: JACK FULMER, GARY NUJELL
 CLASSIFIED ADVERTISING: LAURA RIVCHUN
 SALES ASSISTANTS: EVELYN ASZODI,
 ERICA BENGTSON, ALYSE ZIGMAN

EDITORIAL ADVISER: TIMOTHY WHITE
 PRODUCTION DIRECTOR: MARIE GOMBERT
 DIRECTOR OF MARKETING: ELISSA TOMASETTI
 CIRCULATION MANAGER: JEANNE JAMIN



PRESIDENT: HOWARD LANDER
 SENIOR VP/GENERAL COUNSEL: GEORGINA CHALLIS
 VICE PRESIDENTS: KAREN OERTLEY, ADAM WHITE
 DIRECTOR OF STRATEGIC DEVELOPMENT: KEN SCHLAGER
 BUSINESS MANAGER: JOELLEN SOMMER

©1997 BPI Communications
 1515 Broadway, New York, NY 10036 212-764-7300
 For subscriptions call: 800-722-2346

Airplay Monitor reporting panels are based solely on a station's musical content.

Triple-A Mornings Don't Have To Be Music Only, But They Usually Are

Continued from page 1

as the daily "Five For The Drive" sweep of commercial-free music at 7 a.m. and 8 a.m.

Like many we spoke with, Denberg says there's a place for humor in mornings, to a point. "We're not a zoo, and Kevin has a sense of humor," he says, "but we don't do comedy bits . . . and they don't do shüick, [but] we don't want it to be dry and humorless. Howard Stern's already in the market. [Album rival KLB] has a great morning show that does the more licentious material. We don't come from that direction."

Involvement with community issues is where Denberg feels his morning show excels. "We call ourselves Radio Austin, and I think it's a hole that not a lot of morning shows deal with. It's essential for what we do. Hey, we're not top three in the market in our morning show. But it does set the tone for the whole station. So many stations are fixated on numbers, and I understand that, but when you set the tone for the station like our morning show does, then the clients want to advertise at a place that is thought of as being integral to the community."

KTCZ VS. THE MORNING MONSTER

KTCZ Minneapolis PD Lauren MacLeash thinks that "there can be personality in the morning. I don't think people should be afraid of doing features and having phone calls on the air and having some fun." But since heritage album rival KQRS shares a lot of music with KTCZ and has a 33-share morning show, she says, "It's kind of ridiculous for me to think, 'I'm going to put on a high-profile morning show here and beat this guy.' It was tried, and it really knocked things out of whack."

Like all the PDs we spoke with, MacLeash relies on the music, while Steven John, Belinda Jensen, and John Landel host as a carefully orchestrated trio. Landel is "a heritage traffic guy. He's like Mr. Traffic in town," MacLeash says. Jensen does weather on a local TV station. MacLeash calls her "very high profile. We saw some research on her. People love her. She indexes well with both the TV station's and the radio station's listenership . . . And she tests very positive."

"They can have some fun topical conversations but then get down to business. It's not like they're gabbing—jabbering on about nothing. They're trying to be lifestyle-oriented, talk about things that are water-cooler talk, and get into the elements of news, weather, and traffic and then back into music."

ANTON'S ANTI-GAB APPROACH

Like KTCZ, WTIS Indianapolis competes with a high-profile morning show in album WFBQ's Bob and Tom. WTIS PD Rich Anton says, "Our approach to morning drive was to be the complete opposite of what was being offered by that particular station and a lot of stations who try to do a perky, chatty morning-team kind of approach [with] an AC or CHR feel." Yet with the recent addition of traffic every half hour, Anton says, "we are, for the first time, trying to step out of the realm of just being a music machine in the morning."

Comedy doesn't enter into WTIS' equation, outside of the daily Letterman top 10 list. "Our personality is just myself and [co-host] Diane and our traffic guys being regular guys . . . We know why people listen to this radio station in the morning. They listen to it because we play great music. So we're going to make sure [that we] stay in that music as often as we can."

"We've created a lot of music benchmarks that have become features of the morning show," starting with "Breakfast With The Beatles" every morning, adds Anton. "Beatles aren't an integral part of the regular programming, but they're a great feature in the morning."

"We also do an 8 a.m. music feature each morning. Tuesday, it's a 'Tuesday Morning Road Trip,' two songs in a row from a particular city. We do 'WTIS Then And Now': something old and new that gives an excuse to play old U2 and new U2. 'Double Exposure': same song recorded in two versions. It gives an excuse to play 'Dyer Mak'er' from Zeppelin and then Sheryl Crow's version. 'My Three Songs,' on Friday mornings: three in a

row with a common theme, and the third caller when the third song starts wins three CDs from the new-music file." Anton notes that these features give WTIS a chance to showcase the depth of its library in mornings without sacrificing the familiarity needed for that daypart.

WHPT: NO STRINGS ATTACHED

At WHPT Tampa, Fla., PD Chuck Beck recently moved afternoon jock Russ Albums to mornings. Albums has heritage in the market and "an extensive knowledge of music and artists," says Beck. "Where other stations will be doing bits and pranks and things like that, we'll be giving out music info and sharing [it] with our listeners."

Beck calls sidekick Carson Cooper extremely creative, with "lifestyle news and a Letterman-esque type of delivery, which makes up a lot of our morning shows." Otherwise, there are no comedy elements. "We have tried to do several bits, and basically what our audience wants from this radio station is a lot of music," says Beck. "They like the twisted news outlook that we have, and that's what they want in morning drive."

Beck echoed sentiments heard from other PDs about the audience he's targeting. "The listeners are a lot more intelligent," he says. "They're more sophisticated and not up for too many pranks and bits in the morning. They tune in here to hear the eclectic music that we do play. They do want the news and traffic, but they don't want the news to be a body count from the night before. And they don't want to know if specific bills are about to pass in the Senate. They can get that somewhere else. So, our news is more lifestyle-targeted to adults . . . Our news touches on issues, but it doesn't take them extremely seriously. A good example is our news guy did a story yesterday morning where Proctor & Gamble is buying Tampax, as he said, 'with no strings attached.'"

IS STERN A FACTOR?

WBOS Boston PD Jim Herron has a talent with great market heritage in Ken Shelton, but he disagrees with Beck's characterization of the audience. "I think it's a mistake when you begin to believe your own press . . . Some of these stations think they are above that or that the audience is so intelligent and pseudo-sophisticated. That's when you're in trouble."

Herron says, "To do stuff that's childish would be contrary to our position in the marketplace," but, he adds, "I don't think we have an exclusive club of listeners that are not entertained by Howard Stern. When you look at the stations that WBOS shares with, there are stations that people spend time with with humor in the morning and fun stuff and news."

ENDLESS STREAM OF GUESTS

Being in Nashville allows WRII PD Jessie Scott to tap a seemingly endless stream of guests. "It's an open-door policy to artists with axes. So in any given morning you can find more than one coming in and performing, even at an early hour."

That musical presence adds to the local angle that host Dan McGrath and co-host Tammi Price try to bring to the show, which stretches into news and especially local music news. "It's hopefully more of a reflection of what our audience is about than most stations, which are fairly cookie cutter," says Scott.

KINK's morning show is focused primarily on music. Co-hosts Les Samoff and Mike Rich's two breaks an hour provide a window for topical conversation with "hopefully a little humor injected," says PD Widing. But Widing doesn't want them bogged down in production elements. "We're kind of from the older AOR school, and we try to treat our audience with intelligence and don't get into a lot of the shüicky stuff," he says.

"Everyone's trying to write the triple-A handbook," adds Widing. "What they fail to recognize is there's a bit of art involved, and the art aspect is not something that you can put on paper and formulate. It's an intuitive thing, and the people that are doing good triple-A have an intuitive sense from a listener's perspective and aren't listening to the consultants that have all the answers."

ROCK GODZ

Brian Krysz Is Rocking Again, And 'Active Rock' Had Better Watch Out

Brian Krysz has led album rock battles from Buffalo, N.Y., to Miami, Dallas to Hartford, Conn., before he arrived in Nashville in the last half of 1996 to run a top 40 and country station owned by the Cromwell Group. Now Cromwell director of programming, Krysz has expanded his duties to cover the entire 20-station chain.

And he's back in the rock fray, thanks to Cromwell's stations in Peoria and Decatur, Ill., and Owensboro, Ky. In Peoria, he's flanking heritage rock WWCT with modern WIXO (99X) and mainstream WGLO. Krysz says that WWCT has "such an inordinate amount of numbers that it was ridiculous that nobody was attacking them from the low end." And of WIXO, he says, "We didn't come in trying to be too hip for the room. We came in trying to do safe, and we're going to grow it a little . . . after we educate. It's a Midwestern town where a lot of the gold wasn't really familiar to the audience."



Brian Krysz
Director of Programming
Cromwell Group

You've got to make sure you code and cluster your music properly'

So we're spoon-feeding the audience, as opposed to trying to be too big city on them."

WGLO flipped from classic rock; it now anchors its new mainstream rock format with the syndicated Bob and Tom show each weekday. "So right away, we've got credibility with the best morning show in town," says Krysz. "We want them to listen to us and 99X, as opposed to 99X and WWCT. So we're playing the songs that make sense that appeal to both 20-30 and 30-40. But we're not going crazy as far trying to break new ground. We don't want to necessarily be what WWCT is. We want to kind of hit 'em high and hit 'em low."

Here's a sample hour on WIXO: Red Hot Chili Peppers, "My Friends"; Live, "Lakin's Juice"; Collective Soul, "The World I Know"; Soundgarden, "Spoonman"; Ben Folds Five, "Battle Of Who Could Care Less"; Peter Gabriel, "Red Rain"; Alanis Morissette, "Head Over Feet"; Smashing Pumpkins, "Today"; Silverchair, "Abuse Me"; Gin Blossoms, "Follow You Down"; Mighty Mighty Bosstones, "The Impression That I Get"; Wallflowers, "One Headlight"; Space, "Female Of The Species"; Alice In Chains, "Man In The Box"; and 311, "Down."

And on the upper end, here's a sample hour on WGLO: Pink Floyd, "Run Like Hell"; Candlebox, "Far Behind"; Lynyrd Skynyrd, "That Smell"; Stone Temple Pilots, "Interstate Love Song"; Ozzy Osbourne, "Crazy Train"; Bush, "Greedy Fly"; Bad Company, "Feel Like Makin' Love"; Boston, "Rock And Roll Band"; Head East, "Never Been Any Reason"; Tom Petty, "Walls"; Collective Soul, "Precious Declaration"; the Who, "Baba O'Riley"; and Metallica, "King Nothing."

In Decatur, Cromwell's WZNF dropped ABC's classic rock feed and replaced it with a broader brand of mainstream rock than they're running in Peoria. "At night, because we can get away with a little more of it, we're playing more modern rock. We can be a little more all things to

all people in a market like that," he says. Mornings, again, are Bob and Tom.

The latest addition to the rock fold is WXCM (97X) Owensboro, a market that Krysz says never had a rock signal. WXCM can't run Bob and Tom, since the pair air in a nearby market.

Asked about other syndicated morning programs, the man who put Howard Stern on album KEGL Dallas says, "I'm just not happy with what Howard's doing these days. He's got a huge publicity machine behind him, but I think that he's riding that. I don't think that he's the hardest-working man in show business anymore . . . I think Howard's going to wind up quitting [to] do movies in another year or two anyway."

Krysz, who even put Bob and Tom on his Nashville country station, says, "These guys are funny consistently, and they're doing a lot of things that Howard's forgotten to do. They're doing the pre-produced bits and the parodies. There's more effort put into that morning show than any morning show I've ever been involved with in all the years I've been doing this."

On the other side of the talent issue, most of his rock signals are running jockless. Krysz looks back to his days at modern WMRQ Hartford. "We probably went too long without putting jocks on," he says. "But we want to go long enough to establish the music and our musical identity. In Hartford, they went almost nine months without jocks. And once jocks went on, it was a negative. So we want to be careful not to have that problem. The one complaint I got about WMRQ wherever I went was, 'Man I wish you hadn't put DJs on.'"

Krysz doesn't embrace the active rock moniker for his mainstream stations. "I don't know what the word 'active rock' means," he says. "It's a term created by the trades to try to get more ad revenue from record companies."

"There's not a lot of active rock stations, if you want to use that term, that are successful around the country. You'll notice that most of the heritage stations that have been there a long time with the smart PDs are still there. You look at a guy like [Greg] Ausham. He beats the active rock station there, because he knows what he's doing. Many people have come in and tried to beat WDVE, but no one can beat Gene [Romano], because he understands the city and plays new music as well as great classics . . . Everybody talks about it being cyclical, and it looks to be true . . . Go around the country. The big-name stations that didn't jump off the cliff are the ones that are still successful. The ones that have stayed true are the ones that are still doing well. WNEW didn't stay true. They're screwed. KLOS didn't stay true. They're screwed."

Krysz continues, "I don't think there's anything wrong with a station that's 70% classic and 30% current, as long as you play the right currents. And as long as you balance your music. A lot of the mistakes made by rock programmers were they'd have their MD load in the music and punch out the day and they'd go to lunch. You've got to work very hard to maximize the music you have. There is a place for 'Maggie May' and Metallica on the same radio station if you do your music properly . . . 'Maggie May' doesn't [always] sound good next to Stone Temple Pilots. You've got to make sure you code your music properly and cluster your music properly."

Krysz has codes for two classics categories: classics and classics that can't be played next to a modern song. "People try to say that AOR is artist-driven. It's not. It's a song-driven format," he says. "You don't want to play bad songs just because Stone Temple Pilots is a hot band right now. You want to play the best of them."

MARC SCHIFFMAN

SERVICES

VOICEOVERS

Get what you want
when you want it

KIIS-FM, Los Angeles
KISS Country, Miami
B-97, New Orleans
KISS-FM, Dallas
DRQ, Detroit
K-Hits, Phoenix

Sean Caldwell
PRODUCTIONS
Country CHR Rock Hot AC
voice-over and imaging ISDN
(813) 926-1250 READY

CARTER DAVIS
VOICE AND
PRODUCTION
FOR RADIO AND TV
Phone:
(901) 681-0650

HELP WANTED

Super 102
Today's Hottest Music
AIR TALENT

SUPER 102/WVSR Charleston, WV seeks a 7-12M jock yesterday. We are looking for someone who is energetic, loves personal appearances and is ready to kick some ... Send tapes & resume to Bill Shahan, 817 Suncrest Place, Charleston, WV 25303!!!! EOE

IF YOU HAVE A
PROFESSIONAL SERVICE
YOU'D LIKE TO
ADVERTISE TO THE
RADIO INDUSTRY
CALL:
AIRPLAY MONITOR CLASSIFIED
TEL: (212) 536-5058
FAX: (212) 536-8864

HELP WANTED



DYNAMIC MORNING PERSONALITY

WSPT-FM in the Central Wisconsin market is looking for someone who wants to work in a major market someday, but is willing to work hard for us for 2-3 years, take us to number 1, all while polishing your act. You need to be able to prep hard, and we'll give you the tools to win. We're a Hot AC in a cold climate, so bring a parka! Send T&R to Keith Collins, 500 Division Street, Stevens Point, WI 54481 or call 715-341-9800. EOE

PROMOTIONS DIRECTOR

Major market west coast station seeks experienced Promotions Director to run a high profile Promotion Dept. 3+ years Promo Director exp. required, also must be highly creative, able to put together marketing plans and operational budgets. Send resume w/references by 4/25/97 to:
HR-PR0297
5745 Kearny Villa Rd. Ste. M
San Diego, CA 92123.
EOE

BE SURE YOUR CLASSIFIED AD APPEARS IN THESE BLOCKBUSTER ISSUES OF AIRPLAY MONITOR:

EVENT/ISSUE	ISSUE DATE	CLASSIFIED AD DEADLINE
■ Nomination Ballots Inserted for 1997 Billboard/Airplay Monitor Radio Awards	May 2	April 23
■ Mid West Conclave (July 16 - 20)	July 18	July 9
■ Final Ballots Inserted for 1997 Billboard/Airplay Monitor Radio Awards		
■ NAB Show (Sept. 17 - 20)	Sept. 19	Sept. 10
■ Billboard/Airplay Monitor Radio Seminar and Awards (Oct. 16 - 18)	Oct. 17	Oct. 8
■ Combined Year End Special Issue	Dec. 26	Dec. 15

For More Information Contact:

Laura Rivchun
Phone: (212) 536-5058
Fax: (212) 536-8864

AIRPLAY
Monitor

TOP 40 • COUNTRY • R&B • ROCK

Here's what voiceover talent Sean Caldwell said about advertising in Airplay Monitor's Classified Section:

"Since we started advertising with Monitor, we've increased the amount of calls and leads generated each month. Monitor has been an effective tool to reach the decision maker as well as establish our name in the industry as a leader in voice-over services and production effects."

CLASSIFIED ADVERTISING RATES

HELP WANTED:

1 WEEK \$25.00 PER INCH
2 WEEKS \$20.00 PER INCH

BOX NUMBER: Add \$5.00

SERVICES:

4 WEEKS \$75.00 PER INCH
13 WEEKS \$60.00 PER INCH
26 WEEKS \$55.00 PER INCH
52 WEEKS \$50.00 PER INCH

DEADLINE (ALL CLASSIFIED):
Each Wednesday 3 pm EST, 9 day leadtime.

• Classified ads are non-commissionable •

SUBMIT ALL AD COPY TO:

LAURA RIVCHUN
AIRPLAY MONITOR CLASSIFIED
1515 BROADWAY
NEW YORK, NY 10036

Phone: 212 536-5058
Fax: 212 536-8864

Music Master

THE MUSIC SCHEDULING SYSTEM

Call 800-326-2609 or fax 414-521-2892

e-mail: sales@a-ware.com web: www.a-ware.com

A-Ware Software, Inc. ★ 22600 Arcadian Ave. ★ Waukesha, WI 53186

Tune Up Your Music Library!

★ Better Ratings

★ Higher Profits

★ Less Work

Discover for yourself why thousands of radio stations worldwide are scheduled by the Master. MusicMaster!

AIRPLAY **Monitor** **GREATEST GAINERS**
Broadcast Data Systems

Strongest Increase In Airplay This Week

MAINSTREAM ROCK

INCREASE
IN PLAYS

LIVE • Freaks (RADIOACTIVE/MCA)	+231
WAAF -24, KUFO +18, KTXQ +18, KIOZ +17, WMMS +12, KTYD +11, WZTA +10, KSJO +10, WZMT +9, WXTB +9	
COOL FOR AUGUST • Don't Wanna Be Here (WARNER BROS.)	+215
WZTA +28, KILO +12, WMMS +12, KEGL +12, WBZX +11, KRAD +10, WZAT +10, KNCN +9, WIOT +7, KLBJ +7	
TONIC • If You Could Only See (POLYDOR/A&M)	+184
KIOZ +14, WZZR +13, KBPI +11, WIOT +10, WKQQ +9, KTUX +9, WKLQ +8, KEGL +8, WYSP +7, KTYD +7	
BUSH • Cold Contagious (TRAUMA/INTERSCOPE)	+121
WAAF +15, KNCN +11, WTPA +9, WZTA +8, KBER +8, WRIF +8, WVRK +6, WJRR +6, KATT +6, WBZX +5	
THE OFFSPRING • Gone Away (COLUMBIA)	+121
KLPX +13, WKLQ +11, KCAL +11, KRAB +10, WDHA +8, WRXL +8, WTUE +8, WBAB +8, KIOZ +6, WZAT +5	
NAKED • Mann's Chinese (RED ANT)	+109
WKLO +13, WIYY +13, KEZO +12, KSJO +8, WZAT +7, KRZR +7, WDHA +6, WVRK +6, KUPD +6, KRZZ +5	
MATCHBOX 20 • Push (LAVA/ATLANTIC)	+106
WKLQ +14, WJRR +12, WIYY +11, WOME +10, WDHA +8, WBZX +8, KRAD +8, KISS +8, KFRO +7, KBER +7	
TOAD THE WET SPROCKET • Come Down (COLUMBIA)	+100
KTYD +25, KTXQ +14, WTPA +11, KYYS +11, WCCC +8, WWDC +8, WRCX +5, WKLQ +5, WKQQ +4, WXRA +4	
COUNTING CROWS • Daylight Fading (DGC/GEFFEN)	+95
WKLC +15, KZRR +12, WAPL +11, WIXV +10, WAFX +10, WYSP +9, KYYS +8, WCKW +7, KTAL +6, WVRK +5	
SOUNDGARDEN • Rhinoceros (A&M)	+90
WXTB +18, WZTA +14, KISW +13, WTFX +12, KATT +10, KAZR +8, WRIF +8, KCAL +7, WKQQ +6, WZZR +6	

MODERN ROCK

INCREASE
IN PLAYS

TOAD THE WET SPROCKET • Come Down (COLUMBIA)	+435
WRLG +35, WHFS +25, WHYT +24, WZZZ +21, WGRD -21, KXPK +20, WBRU +20, WBZU +19, WAQZ +19, WENZ +19	
MEREDITH BROOKS • Bitch (CAPITOL)	+320
KICT +22, WNNX +22, KFRR +16, KXPK +16, KPOI +14, KCXX +14, WRXQ +13, WENZ +12, WPLA +11, XHRM +10	
LIVE • Freaks (RADIOACTIVE/MCA)	+278
KXRK +22, WBRU +22, WENZ +19, WDGE +18, WKDF +17, KPNT +16, WFNX +16, KITS +13, KXTE +12, WRXQ +12	
DEPECHE MODE • It's No Good (MUTE/REPRISE)	+235
WXEG +19, WXRK +15, KLZR +14, WEQX +13, WKDF +13, WPLA +12, KCXX +11, WBCN +11, WNNX +10, KICT +9	
THIRD EYE BLIND • Semi-Charmed Life (ELEKTRA/IEEG)	+206
WRXR +24, KXRK +22, KHTY +13, KENZ +12, KLZR +12, WMRQ +12, WXEG +10, KCXX +9, KWOD +9, WRXQ +8	
COUNTING CROWS • Daylight Fading (DGC/GEFFEN)	+201
WBRU +23, WPLY +19, KGDE +18, WQXA +18, KPOI +15, WEDG +13, WENZ +13, KTEG +11, WRXQ +11, WEND +10	
SILVERCHAIR • Freak (EPIC)	+189
WENZ +17, KJEE +16, KPOI +14, KPNT +14, KNRX +12, WQBK +12, KHTY +12, WBRU +12, WXRK +11, WPBZ +10	
SQUIRREL NUT ZIPPERS • Hell (MAMMOTH)	+169
WPBZ +17, WENZ +17, KXRK +12, WGRD +12, WKQX +11, KJEE +10, KGDE +10, KNDD +10, KDGE +10, XHRM +10	
BLUR • Song 2 (FOOD/PARLOPHONE/VIRGIN)	+161
KROX -17, WXEG +13, KHTY +12, WQBK +11, KCXX +11, WNVE +11, WQXA +11, KMYZ +10, KFRR +9, KICT +9	
K'S CHOICE • Not An Addict (550 MUSIC)	+134
CIMX +29, WWCD +17, KLZR +14, WQBK +12, KFRR +9, WAQZ +9, KNRK +7, WEND +7, KHTY +7, WEQX +7	

VIDEO PLAYLISTS
MOST PLAYED ROCK TRACKS



1
MUSIC FIRST

	TW	LW		TW	LW
1	40	35	1	Aerosmith, Falling In Love (Is Hard On The Knees)	38 44
2	39	34	2	U2, Staring At The Sun	35 26
3	34	30	3	Jamiroquai, Virtual Insanity	33 31
4	32	32	4	Squirrel Nut Zippers, Hell	28 30
5	25	27	5	The Verve Pipe, The Freshmen	27 26
6	24	25	6	The Offspring, Gone Away	21 23
7	19	19	7	Blur, Song 2	21 25
8	18	18	8	Live, Freaks	21 1
9	17	18	9	Collective Soul, Precious Declaration	20 26
10	16	15	10	Fiona Apple, Sleep To Dream	19 17
11	16	15	11	Sublime, Santeria	19 25
12	16	15	12	Beck, The New Pollution	18 25
13	10	8	13	The Wallflowers, One Headlight	17 38
14	9	8	14	Sheryl Crow, Everyday Is A Winding Road	17 29
15	9	9	15	The Mighty Mighty Bosstones, The Impression That I Get	14 11
16	8	7	16	Veruca Salt, Volcano Girls	12 15
17	8	7	17	Paula Cole, Where Have All The Cowboys Gone?	11 12
18	8	7	18	Luscious Jackson, Naked Eye	10 9
19	8	6	19	Wilco, Outtaste (Outta Mind)	9 15
20	7	3	20	Savage Garden, I Want You	9 5
21	7	3	21	Silverchair, Freak	9 4
22	7	3	22	Matthew Sweet, Where You Get Love	8 6
23	7	2	23	Third Eye Blind, Semi-Charmed Life	8 1
24	6	7	24	Jewel, You Were Meant For Me	7 6
25	6	7	25	Metallica, King Nothing	7 18
26	6	7	26	Kula Shaker, Hey Dude	7 5
27	6	7	27	White Town, Your Woman	7 3
28	5	4	28	Tonic, If You Could Only See	6 7
29	5	3	29	No Doubt, Don't Speak	6 4
30	5	3	30	INXS, Elegantly Wasted	6 3
31	5	4	31	Stone Temple Pilots, Interstate Love Song	5 2
32	5	3	32	The Smashing Pumpkins, Tonight, Tonight	5 2
33	5	3	33	The Cardigans, Lovefool	5 4
34	4	3	34	Bush, Swallowed	5 4
35	4	3	35	Nine Inch Nails, The Perfect Drug	5 21
36	4	3	36	Jonny Lang, Lie To Me	5 5
37	3	1	37	No Doubt, Just A Girl	4 3
38	3	1	38	The Smashing Pumpkins, 1979	4 2
39	3	3	39	No Doubt, Spiderwebs	4 3
40	3	1	40	311, Down	4 5

TRIPLE-A

INCREASE
IN PLAYS

TOAD THE WET SPROCKET • Come Down (COLUMBIA)	+177
WVRV +22, CIDR +21, WBOS +17, WXRV +16, WKOC +12, WNCS +12, KXPT +10, KBCO +10, WHPT +9, KFOG +7	
INDIGO GIRLS • Shame On You (EPIC)	+47
KXPT +9, WKOC +9, KMTT +7, WHPT +5, WXRK +5, KTCZ +5, KKZN +4, WNCS +4, CIDR +2, WRLT +2	
SON VOLT • Back Into Your World (WARNER BROS.)	+30
WRLT +6, KTMN +5, KMBY +4, KGSR +4, WNCS +3, WMAX +2, CIDR +2, KPIG +1, KMTT +1, WTTS +1	
U2 • Staring At The Sun (ISLAND)	+29
WXLE +6, WXRV +5, WMAX +4, KTCZ +4, KMBY +3, WHPT +2, WBOS +2, KGSR +2, KBCO +2, KINK +1	
SISTER HAZEL • All For You (UNIVERSAL)	+28
WJ BX +11, WTTS +10, WXLE +7, KTMN +3, WKOC +2, WNCS +2, WBOS +2, WRLT +1, KXPT +1	
THE VERVE PIPE • The Freshmen (RCA)	+27
WXRV +10, KGSR +8, KFOG +8, KMBY +5, WRLT +3, WVRV +3, WNCS +3, WJ BX +2, KKZN +1, KXPT +1	
COUNTING CROWS • Daylight Fading (DGC/GEFFEN)	+26
CIDR +6, WVRV +6, WKOC +5, KFOG +5, WHPT +4, KMBY +3, KTMN +3, WRLT +1, KGSR +1, KTCZ +1	
ABRA MOORE • Four Leaf Clover (ARISTA AUSTIN/ARISTA)	+25
WVRV +6, WBOS +4, KKZN +3, WNCS +3, WXRV +3, KTMN +2, WRLT +2, KMTT +2, KINK +1, WHPT +1	
MORPHINE • Early To Bed (DREAMWORKS/RYKODISC/GEFFEN)	+25
WXLE +10, WKOC +9, CIDR +6, KTMN +4, KMTT +4, WTTS +4, WRLT +2, KTCZ +1, KFOG +1	
THIRD EYE BLIND • Semi-Charmed Life (ELEKTRA/IEEG)	+22
WJ BX +9, WTTS +7, WVRV +7, WKOC +3, KMBY +1, WXLE +1	
INXS • Elegantly Wasted (MERCURY)	+22
WNCS +8, WVRV +5, KXPT +3, WKOC +3, WBOS +3, KKZN +2, WXLE +2, KFOG +2, WRLT +1, KMTT +1	

VALLEJO ON TOUR FOREVER!!

"JUST ANOTHER DAY"

FROM THE INCENDIARY DEBUT ALBUM **VALLEJO**

Top 5 Phones At:

KBER 15x KBPI 31x - #1 played KILO 17x KTXQ 20x WKDF 15x - #2 callout

Top Spins At:

KRAD 24x KXRK 24x WNOR 23x KTUX 21x WRLG 21x
KROX 20x KRXQ 19x WKLO 16x KDGE 16x KBER 15x



TVT RADIO CONTACTS: Mark Jackson, John Perrone, Sudi Gaasche, Gary Jay, Zach Lanier @212.979.6410

GRAVITY KILLS "DOWN"

THE NEW TRACK FROM THE POWERFUL DEBUT ALBUM **GRAVITY KILLS**

Top Spins At:

WAAF 23x WZAT 20x WJRR 17x WNOR 17x WXRA 14x
WLUM 14x KLBj 13x KTUX 12x KISS 11x WXTB 11x
KBPI 11x

Appearing on **M** LOVELINES in early May!

AND NOW AVAILABLE: MANIPULATED

THE REMIX ALBUM FEATURING REMIXES BY AL JOURGENSEN, P.M. DAWN, LOROS OF ACID AND MORE.

POWER PLAYLISTS

For Week Ending April 13, 1997

Radio Data Systems logo and text: Playlist supplied by Broadcast Data Systems. Radio Track service. Songs ranked by number of plays in monitored week.

AIRPLAY Monitor logo

Main table containing 48 sub-tables for radio stations: KLOS, WYSP, WRCX, KQRS, WMMR, WWDC, WRIF, WFBQ, KEGL, WKLS, WAAF, WMMS, KTXQ, KSJO, WEBN, WHJY, WZTA, WIYY, KSHE, WLZR, WJRR, WONE, KUPD, WXTB. Each sub-table lists songs, artists, and ratings.

MAINSTREAM ROCK

Already
On:

WZTA #1 PHONES
WRCX
KTXQ
WKLS
WAAF
WIYY
KEGL
WMMS
KRXQ
WYSP
WRIF
KILO
WKLQ
WCMF
WRDU
KRAD
WIOT
KDKB
KQRC
WLZR
KSJO
KISS
KYYS
KLBj

Adds this week
include:

KBER
WBZX
WJRR
WAVF
KAZR
WXRA
WTPT
WWBN
KFMW
KWBR
KDUX
WWGZ
WTKX
So Far..

MODERN ROCK ACTION

On over 40 Modern Rock
stations including:

WBCN
99X
WEND
WENZ
WRLG
KTCL
KKND
KMYZ
KGDE
KNRX
KPOI
WEQX
WXZZ
KHTY
KJEE
WWDX
WHTG
WKRO
WRAX
KFMZ
WMAD
WNFZ
WXSX
WGRG
KQXR
KQRX
WHMP
WJSE
KZYR
KFTE
KXTZ
WWSK
KBZF
WNTX
WTGZ
WBER
WDOX



ALBUM IN STORES 4/22

COOL FOR AUGUST "DON'T WANNA BE HERE" from the album GRAND WORLD

Produced by Matt Serletic

DEBUT (28) MAINSTREAM ROCK - HIGHEST DEBUT OF THE WEEK!

477 SPINS AS OF 4/15

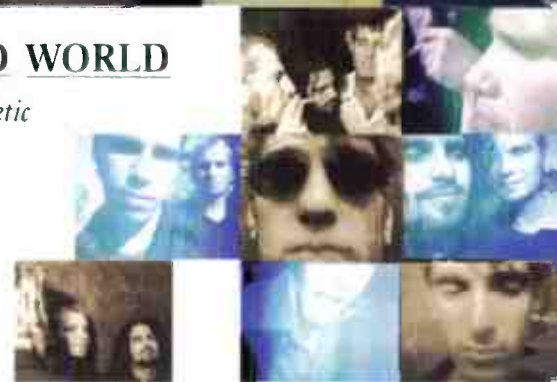
#1 MOST NEW AIRPLAY 2ND WEEK IN A ROW!

#2 BIGGEST GAINER 2ND WEEK IN A ROW!



Management: Ross Schwartz for Building Management ©1997 Warner Bros. Records Inc. <www.wbr.com/radio>

World Radio History



Radio Data Systems logo and text: Playlists supplied by Broadcast Data Systems' Radio Data Service...

Main content table with 12 columns representing different radio stations (WBZX, KQRC, KISW, KISS, WBAB, KUFO, WIMZ, WRDU, KBPI, KRXQ, KDKB, WROQ, WCMF, WDHA, KYYS, WCKW, WPYX, WZZO, KATT, WLVQ, WEGR, KIOZ, WTFX, WTUE) and their respective top 30 power playlists.

grammy winners for "so much to say"
approaching triple platinum

Dave Matthews Band tripping billies

summer tour starts 6/3



the new single and video from
the **grammy-winning** album crash
produced by Steve Lillywhite mixed by Tom Lord-Alge
www.dmband.com



"tripping billies" is on your desk now!!



World Radio History



★ ★ ★ **AIRPOWER** ★ ★ ★

(Minimum 800 detections for the first time)

NO RECORDS QUALIFIED FOR AIRPOWER THIS WEEK

AIRPOWER BOUND

Total Plays/Gain

NAKED 642/109

Mann's Chinese (Red Ant)

Total Stations: 56/Chart Move: 21-17

Heavy (21+ plays): 5 KRXX, KTUX, KUPD, WMMS, WZAT

Medium (14-20): 14 KBER, KBPI, KEGL, KILO, KQRC, KRAD, KRZR, KSJO, KTYD, WCCC, WIOT, WJRR, WKLO, WTPA

Light (Under 14): 37

New Airplay This Week: 6 KEZO, KNCN, KRZZ, WDHA, WIYY, WVRK

SOUNDGARDEN 556/90

Rhinosaur (A&M)

Total Stations: 40/Chart Move: 26-21

Heavy (21+): 8 KAZR, KISW, KUFO, WEBN, WNOR, WRCX, WXRA, WZAT

Medium (14-20): 12 KATT, KBPI, KIOZ, KQRC, KUPD, WIOT, WIYY, WLZR, WMMS, WRIF, WXTB, WZTA

Light (Under 14): 20

New Airplay This Week: 6 KCAL, WNCD, WTFX, WXTB, WZTA, WZZR

RUSH 550/-13

Driven (Anthem/Atlantic)

Total Stations: 49/Chart Move: 20-22

Heavy (21+): 5 KSHE, KTUX, WONE, WRDU, WZZO

Medium (14-20): 16 KEGL, KEZO, KFRQ, KISW, KNCN, KOMP, KUFO, KZRR, WAPL, WCCC, WDHA, WKLC, WMMS, WROV, WTUE, WZZR

Light (Under 14): 28

BUSH 546/121

Cold Contagious (Trauma/Interscope)

Total Stations: 44/Chart Move: 29-23

Heavy (21+): 6 KTUX, KUFO, WAAF, WXRA, WZAT, WZTA

Medium (14-20): 9 KEGL, KIOZ, KISW, KNCN, KQRC, KRAD, KRZR, WJRR, WWDC

Light (Under 14): 29

New Airplay This Week: 4 WBZX, WRIF, WTPA, WVRK

STIR 522/73

Stale (Aware/Capitol)

Total Stations: 49/Chart Move: 27-24

Heavy (21+): 6 KEGL, KTUX, WAAF, WJRR, WMMS, WZAT

Medium (14-20): 13 KBER, KILO, KLPX, KQRC, KRAD, KREV, KRZR, KSJO, KTYD, WIOT, WKLO, WRCX, WTUE

Light (Under 14): 30

New Airplay This Week: 3 KNCN, WTAK, WZZO

HELMET 505/15

Exactly What You Wanted (Interscope)

Total Stations: 52/Chart Move: 25-25

Heavy (21+): 1 KREV

Medium (14-20): 8 KAZR, KRAD, WAAF, WAVF, WKLO, WMMS, WZAT, WZTA

Light (Under 14): 43

New Airplay This Week: 2 KFRQ, WROV

New Airplay This Week: 1 WIXV

COOL FOR AUGUST 446/215

Don't Wanna Be Here (Warner Bros.)

Total Stations: 48/Chart Move: Debut 28

Heavy (21+): 1 WZTA

Medium (14-20): 10 KLBK, KQRC, KRAD, KRXX, KSJO, KTUX, KTXQ, KTYD, WTPA, WZAT

Light (Under 14): 37

New Airplay This Week: 16 KDKB, KEGL, KILO, KNCN, KYYS, KZRR, WBZX, WIOT, WIYY, WKQQ, WLZR, WMMS, WRCX, WROQ, WVRK, WZTA

ORBIT 415/75

Medicine (Baby Come Back) (A&M)

Total Stations: 37/Chart Move: 34-30

Heavy (21+): 1 WNOR

Medium (14-20): 15 KILO, KLBK, KRAD, KRXX, KRZR, KTUX, KTYD, WJRR, WKLO, WLZR, WROV, WXRA, WYSP, WZAT, WZTA

Light (Under 14): 21

New Airplay This Week: 3 KISS, WFYV, WZZR

LIVE 412/231

Freaks (Radioactive/MCA)

Total Stations: 46/Chart Move: Debut 31

Heavy (21+): 4 KAZR, KQRC, WAAF, WLZR

Medium (14-20): 7 KIOZ, KRXX, KSJO, KTXQ, KUFO, WAPL, WIOT

Light (Under 14): 35

New Airplay This Week: 14 KBER, KCAL, KIOZ, KLBK, KTUX, KTXQ, KTYD, KUFO, WCCC, WMMS, WRIF, WFXF, WXTB, WZTA

OUTHOUSE 389/55

Welcome (Mercury)

Total Stations: 37/Chart Move: 35-32

Heavy (21+): 3 KREV, WMMS, WZAT

Medium (14-20): 8 KAZR, KILO, KLBK, KNCN, KRAD, WAAF, WJRR, WZMT

Light (Under 14): 26

New Airplay This Week: 2 KTUX, WTFX

DRAIN S.T.H. 376/59

I Don't Mind (The Enclave)

Total Stations: 40/Chart Move: 38-33

Heavy (21+): 2 WMMS, WXRA

Medium (14-20): 6 KEGL, KILO, KRAD, KTUX, KUPD, WZAT

Light (Under 14): 32

New Airplay This Week: 5 KATT, WJRR, WNOR, WRIF, WZMT

COWBOY MOUTH 349/78

Jenny Says (MCA)

Total Stations: 37/Chart Move: Debut 36

Heavy (21+): 2 KRAD, WZAT

Medium (14-20): 8 KBPI, KISS, KNCN, KRXX, KTUX, WAVF, WTPA, WXRA

Light (Under 14): 27

New Airplay This Week: 7 KBER, KILO, WAVF, WHJY, WMMS, WVRK, WWDC

INXS 346/34

Elegantly Wasted (Mercury)

Total Stations: 40/Chart Move: 39-37

Heavy (21+): 0

Medium (14-20): 11 KBPI, KFRQ, KTUX, KTYD, WBAB, WCCC, WEGR, WHJY, WTPA, WTUE, WVRK

Light (Under 14): 29

CHALK FARM 338/55

Live Tomorrow (Columbia)

Total Stations: 40/Chart Move: Debut 39

Heavy (21+): 0

MOST NEW AIRPLAY THIS WEEK

No. Of Stations

COOL FOR AUGUST <i>Don't Wanna Be Here (Warner Bros.)</i>	16
LIVE <i>Freaks (Radioactive/MCA)</i>	14
COUNTING CROWS <i>Daylight Fading (DGC/Geffen)</i>	9
TONIC <i>If You Could Only See (Polydor/A&M)</i>	9
COREY STEVENS <i>One More Time (Eureka/Discovery)</i>	8

Medium (14-20): 8 KATT, KFRQ, KLBK, KLPX, KQRS, KTUX, WWDC, WXRA
Light (Under 14): 32
New Airplay This Week: 7 KEZO, KRAD, KYYS, WEGR, WIYY, WSTZ, WTUE

CHEAP TRICK 331/51

Say Goodbye (Red Ant)

Total Stations: 34/Chart Move: Debut 40

Heavy (21+): 0

Medium (14-20): 8 KTYD, KYYS, WAPL, WBAB, WCMF, WROQ, WZAT, WZZO

Light (Under 14): 26

New Airplay This Week: 5 KLAQ, KMOD, WFBQ, WRIF, WTFX

Medium (14-20): 8 KLPX, KMJX, KRZR, WCKW, WIOT, WMMR, WROQ, WYSP
Light (Under 14): 23
New Airplay This Week: 3 KRXX, WTAK, WTUE

COUNTING CROWS 259/95

Daylight Fading (DGC/Geffen)

Total Stations: 30

Heavy (21+): 1 KTXQ

Medium (14-20): 4 WKLC, WMMR, WTPA, WWDC

Light (Under 14): 25

New Airplay This Week: 9 KTAL, KZRR, WAPL, WCKW, WIXV, WKLC, WVRK, WYSP

SILVERCHAIR 248/45

Freak (Epic)

Total Stations: 27

Heavy (21+): 3 KSJO, WAAF, WNOR

Medium (14-20): 3 KBER, KIOZ, WXTB

Light (Under 14): 21

New Airplay This Week: 5 KRXX, KRZR, WRIF, WTFX, WWDC

GRAVITY KILLS 245/24

Down (TVT)

Total Stations: 51

Heavy (21+): 1 WAAF

Medium (14-20): 4 WJRR, WNOR, WXRA, WZAT

Light (Under 14): 46

New Airplay This Week: 1 WXRA

GEORGE THOROGOOD & THE DESTROYERS 245/50

Rocking My Life Away (EMI)

Total Stations: 22

Heavy (21+): 2 KYYS, WONE

Medium (14-20): 6 KMOD, KSHE, WIZN, WKLC, WROV, WZZO

Light (Under 14): 14

New Airplay This Week: 2 KLOS, WRXK

ROLLINS BAND 237/31

Starve (DreamWorks/Geffen)

Total Stations: 37

Heavy (21+): 0

Medium (14-20): 2 KAZR, WZAT

Light (Under 14): 35

New Airplay This Week: 3 KREV, WRCX, WROV

SWEET VINE 228/88

Mountainside (Columbia)

Total Stations: 25

Heavy (21+): 1 KDKB

Medium (14-20): 6 KLPX, KMJX, KQRS, KYYS, WDHA, WZAT

Light (Under 14): 18

New Airplay This Week: 6 KCAL, KEZO, KTAL, KYYS, WKQQ, WNCD

THIRD EYE BLIND 221/20

Semi-Charmed Life (Elektra/EEG)

Total Stations: 23

Heavy (21+): 2 WAVF, WXRA

Medium (14-20): 6 KBPI, KTUX, KTYD, WJRR, WKLO, WZAT

Light (Under 14): 15

New Airplay This Week: 1 WKQQ

CHART BOUND

Total Plays/Gain

AEROSMITH 316/-3

Nine Lives (Columbia)

Total Stations: 37

Heavy (21+): 3 KAZR, WAAF, WRDU

Medium (14-20): 6 KIOZ, KREV, KUFO, WIOT, WIYY, WMMS

Light (Under 14): 28

HANDSOME 310/48

Needles (Epic)

Total Stations: 38

Heavy (21+): 2 KREV, WXRA

Medium (14-20): 5 KEGL, KISW, WAAF, WMMS, WZAT

Light (Under 14): 31

THE SCREAMIN' CHEETAH WHEELIES 303/76

Magnolia (Capricorn/Mercury)

Total Stations: 37

Heavy (21+): 1 WZAT

Medium (14-20): 5 KMOD, KNCN, KRAD, KTUX, WTPA

Light (Under 14): 31

New Airplay This Week: 7 KNCN, KRZZ, WCCC, WIZN, WKLC, WLZR, WSFL

ZZ TOP 295/47

Rhythmmeen (RCA)

Total Stations: 30

Heavy (21+): 1 WONE

Medium (14-20): 9 KLAQ, KLPX, KMOD, KOMP, KTUX, KYYS, WAPL, WKLC, WZZR

Light (Under 14): 20

New Airplay This Week: 4 KEGL, WIZN, WONE, WFXF

VALLEJO 270/16

Just Another Day (IMI/TVT)

Total Stations: 23

Heavy (21+): 4 KBPI, KRAD, KTUX, WNOR

Medium (14-20): 6 KBER, KEGL, KILO, KRXX, KTXQ, WKLO

Light (Under 14): 13

New Airplay This Week: 1 KSJO

AEROSMITH 270/19

Pink (Columbia)

Total Stations: 32

Heavy (21+): 1 KCAL

RADISH 192/81

Little Pink Stars (Mercury)

Total Stations: 33

Heavy (21+): 0

Medium (14-20): 5 KEGL, KTUX, KTXQ, WMMS, WXRA

Light (Under 14): 28

New Airplay This Week: 7 KAZR, KFRQ, KILO, KISS, KRXX, WNCD, WXRA

BETTER THAN EZRA 191/72

Long Lost (Swell/Elektra/EEG)

Total Stations: 28

Heavy (21+): 0

Medium (14-20): 3 KRZR, WBZX, WTUE

Light (Under 14): 25

New Airplay This Week: 6 KLAQ, WAPL, WBZX, WCKW, WTPA, WVRK

DARLAHOOD 186/39

Big Fine Thing (Reprise)

Total Stations: 28

Heavy (21+): 1 WAAF

Medium (14-20): 2 WIOT, WMMS

Light (Under 14): 25

New Airplay This Week: 5 KIOZ, KNCN, WCCC, WNCD, WZMT

COREY STEVENS 164/64



Detailed song tracking information for the last 3 weeks for all songs showing increased play this week. Total plays and gain do not include video play. Markets listed in order of population.

Total Plays/Gain

Table for BUSH - Cold Contagious (Trauma/Interscope) - 546/121. Includes station data for L.A., Chicago, Phila., Detroit, Dallas, Wash., DC, Miami, Atlanta, Seattle, Long Isl., San Diego, Minn., St. Louis, Balt., Phoenix, Tampa, Clevel., Denver, Port., OR, Cincinn., Kan. City, Rivers, Milwaukee, Sacram., San Jose, Provid., Colum., OH, Norfolk, San Anton., Salt Lake, Indian, New Or., Orlando, Hartford, Greensb., Memphis, Rochester, W.P. Beach, Las Vegas, Louisv., Ral./Dur., Okla. City.

Table for CHALK FARM - Live Tomorrow (Columbia) - 338/55. Includes station data for L.A., Chicago, Phila., Detroit, Dallas, Wash., DC, Miami, Atlanta, Seattle, Long Isl., San Diego, Minn., St. Louis, Balt., Phoenix, Tampa, Clevel., Denver, Port., OR, Cincinn., Kan. City, Rivers, Milwaukee, Sacram., San Jose, Provid., Colum., OH, Norfolk, San Anton., Salt Lake, Indian, New Or., Orlando, Hartford, Greensb., Memphis, Rochester, W.P. Beach, Las Vegas, Louisv., Ral./Dur., Okla. City.

Table for COOL FOR AUGUST - Don't Wanna Be Here (Warner Bros.) - 446/215. Includes station data for L.A., Chicago, Phila., Detroit, Dallas, Wash., DC, Miami, Atlanta, Seattle, Long Isl., San Diego, Minn., St. Louis, Balt., Phoenix, Tampa, Clevel., Denver, Port., OR, Cincinn., Kan. City, Rivers, Milwaukee, Sacram., San Jose, Provid., Colum., OH, Norfolk, San Anton., Salt Lake, Indian, New Or., Orlando, Hartford, Greensb., Memphis, Rochester, W.P. Beach, Las Vegas, Louisv., Ral./Dur., Okla. City.

Table for COWBOY MOUTH - Jenny Says (MCA) - 349/78. Includes station data for L.A., Chicago, Phila., Detroit, Dallas, Wash., DC, Miami, Atlanta, Seattle, Long Isl., San Diego, Minn., St. Louis, Balt., Phoenix, Tampa, Clevel., Denver, Port., OR, Cincinn., Kan. City, Rivers, Milwaukee, Sacram., San Jose, Provid., Colum., OH, Norfolk, San Anton., Salt Lake, Indian, New Or., Orlando, Hartford, Greensb., Memphis, Rochester, W.P. Beach, Las Vegas, Louisv., Ral./Dur., Okla. City.

Table for DRAIN S.T.H. - I Don't Mind (The Enclave) - 376/59. Includes station data for L.A., Chicago, Phila., Detroit, Dallas, Wash., DC, Miami, Atlanta, Seattle, Long Isl., San Diego, Minn., St. Louis, Balt., Phoenix, Tampa, Clevel., Denver, Port., OR, Cincinn., Kan. City, Rivers, Milwaukee, Sacram., San Jose, Provid., Colum., OH, Norfolk, San Anton., Salt Lake, Indian, New Or., Orlando, Hartford, Greensb., Memphis, Rochester, W.P. Beach, Las Vegas, Louisv., Ral./Dur., Okla. City.

Table for HELMET - Exactly What You Wanted (Interscope) - 505/15. Includes station data for L.A., Chicago, Phila., Detroit, Dallas, Wash., DC, Miami, Atlanta, Seattle, Long Isl., San Diego, Minn., St. Louis, Balt., Phoenix, Tampa, Clevel., Denver, Port., OR, Cincinn., Kan. City, Rivers, Milwaukee, Sacram., San Jose, Provid., Colum., OH, Norfolk, San Anton., Salt Lake, Indian, New Or., Orlando, Hartford, Greensb., Memphis, Rochester, W.P. Beach, Las Vegas, Louisv., Ral./Dur., Okla. City.

Table for INXS - Elegantly Wasted (Mercury) - 346/34. Includes station data for L.A., Chicago, Phila., Detroit, Dallas, Wash., DC, Miami, Atlanta, Seattle, Long Isl., San Diego, Minn., St. Louis, Balt., Phoenix, Tampa, Clevel., Denver, Port., OR, Cincinn., Kan. City, Rivers, Milwaukee, Sacram., San Jose, Provid., Colum., OH, Norfolk, San Anton., Salt Lake, Indian, New Or., Orlando, Hartford, Greensb., Memphis, Rochester, W.P. Beach, Las Vegas, Louisv., Ral./Dur., Okla. City.

Table for JONNY LANG - Lie To Me (A&M) - 844/17. Includes station data for L.A., Chicago, Phila., Detroit, Dallas, Wash., DC, Miami, Atlanta, Seattle, Long Isl., San Diego, Minn., St. Louis, Balt., Phoenix, Tampa, Clevel., Denver, Port., OR, Cincinn., Kan. City, Rivers, Milwaukee, Sacram., San Jose, Provid., Colum., OH, Norfolk, San Anton., Salt Lake, Indian, New Or., Orlando, Hartford, Greensb., Memphis, Rochester, W.P. Beach, Las Vegas, Louisv., Ral./Dur., Okla. City.

Table for LIVE - Freaks (Radioactive/MCA) - 412/231. Includes station data for L.A., Chicago, Phila., Detroit, Dallas, Wash., DC, Miami, Atlanta, Seattle, Long Isl., San Diego, Minn., St. Louis, Balt., Phoenix, Tampa, Clevel., Denver, Port., OR, Cincinn., Kan. City, Rivers, Milwaukee, Sacram., San Jose, Provid., Colum., OH, Norfolk, San Anton., Salt Lake, Indian, New Or., Orlando, Hartford, Greensb., Memphis, Rochester, W.P. Beach, Las Vegas, Louisv., Ral./Dur., Okla. City.

Table for MATCHBOX 20 - Push (Lava/Atlantic) - 949/106. Includes station data for L.A., Chicago, Phila., Detroit, Dallas, Wash., DC, Miami, Atlanta, Seattle, Long Isl., San Diego, Minn., St. Louis, Balt., Phoenix, Tampa, Clevel., Denver, Port., OR, Cincinn., Kan. City, Rivers, Milwaukee, Sacram., San Jose, Provid., Colum., OH, Norfolk, San Anton., Salt Lake, Indian, New Or., Orlando, Hartford, Greensb., Memphis, Rochester, W.P. Beach, Las Vegas, Louisv., Ral./Dur., Okla. City.

Broadcast Data Systems logo and detailed song tracking information for the week ending April 13, 1997.

Main table containing 10 columns of song activity reports for artists: NAKED, THE OFFSPRING, ORBIT, OUTHOUSE, QUEENSRÛCHE, etc. Each column includes station data, chart moves, and song titles.

Continuation of the main table with 10 columns of song activity reports for artists: SOUNDGARDEN, STIR, TONIC, VERUCA SALT, THE VERVE PIPE, etc. Each column includes station data, chart moves, and song titles.

POWER PLAYLISTS

AIRPLAY Monitor For Week Ending April 13, 1997

For Week Ending April 13, 1997

Playlists supplied by Broadcast Data Systems Radio Trac service. Songs ranked by number of plays in commercial week. Playlists are listed in order of this week's chart, beginning with the "Airplay" station. Charts are updated twice weekly following the close of the Spring and Fall Addition surveys. The number of stations shown at each rank varies depending upon space.

WXRK
New York PD: Steve Kingston
APD/MD: Alexa Tobin

TW	LW	1
1	1	Metallica, Hero Of The Day
2	2	The Wallflowers, One Headlight
3	3	Live, Lakini's Juice
4	4	U2, Staring At The Sun
5	5	Bush, Greedy Fly
6	6	Soundgarden, Blow Up The Outside World
7	7	Metallica, King Nothing
8	8	Veruca Salt, Volcano Girls
9	9	Back, The New Pollution
10	10	Luscious Jackson, Naked Eye
11	11	The Smashing Pumpkins, Eye
12	12	Silverchair, Abuse Me
13	13	The Offspring, Gone Away
14	14	Sublime, Santena
15	15	Alice In Chains, Agan
16	16	The Verve Pipe, The Freshmen
17	17	Dave Matthews Band, Crash Into Me
18	18	Blur, Song 2
19	19	White Town, Your Woman
20	20	Third Eye Blind, Semi-Charmed Life
21	21	Mighty Mighty Bosstones, The Impression
22	22	Rage Against The Machine, Down Road
23	23	Squirrel Nut Zippers, Hell
24	24	Depeche Mode, It's No Good
25	25	Matchbox 20, Push
26	26	Tonic, If You Could Only See
27	27	Nine Inch Nails, The Perfect Drug
28	28	Fiona Apple, Sleep To Dream
29	29	Bush, Cold Contagious
30	30	311, All Mixed Up

KROQ
Los Angeles PD: Kevin Weatherly
APD: Gene Sandboorn

TW	LW	1
1	1	Sublime, Santena
2	2	The Smashing Pumpkins, Eye
3	3	Live, Lakini's Juice
4	4	Depeche Mode, It's No Good
5	5	White Town, Your Woman
6	6	No Doubt, Sunday Morning
7	7	Dave Matthews Band, Crash Into Me
8	8	The Offspring, Gone Away
9	9	Mighty Mighty Bosstones, The Impression
10	10	Third Eye Blind, Semi-Charmed Life
11	11	Real Big Fish, Sell Out
12	12	Bush, Cold Contagious
13	13	Live, Freaks
14	14	Squirrel Nut Zippers, Hell
15	15	Tori Amos, Silent All These Years
16	16	Sublime, Wrong Way
17	17	Back, The New Pollution
18	18	U2, Staring At The Sun
19	19	Stone Temple Pilots, Lady Picture Show
20	20	The Wallflowers, One Headlight
21	21	Jamiroquai, Virtual Insanity
22	22	311, All Mixed Up
23	23	Fiona Apple, Sleep To Dream
24	24	It's Choice, Not An Addict
25	25	Meredith Brooks, Bitch
26	26	Garbage, #1 Crush
27	27	The Verve Pipe, The Freshmen
28	28	Sneaker Pimps, 6 Underground
29	29	Daft Punk, Da Funk
30	30	Blur, Song 2

WKQX
Chicago PD: Bill Gamble
APD/MD: Mary Shuminas

TW	LW	1
1	1	The Smashing Pumpkins, Eye
2	2	Squirrel Nut Zippers, Hell
3	3	Dave Matthews Band, Crash Into Me
4	4	White Town, Your Woman
5	5	Nine Inch Nails, The Perfect Drug
6	6	Jewel, You Were Meant For Me
7	7	Mighty Mighty Bosstones, The Impression
8	8	Back, The New Pollution
9	9	The Offspring, Gone Away
10	10	U2, Staring At The Sun
11	11	Blur, Song 2
12	12	Meredith Brooks, Bitch
13	13	It's Choice, Not An Addict
14	14	Veruca Salt, Volcano Girls
15	15	The Verve Pipe, The Freshmen
16	16	Paula Cole, Where Have All The Cowboys
17	17	Third Eye Blind, Semi-Charmed Life
18	18	Fiona Apple, Sleep To Dream
19	19	Depeche Mode, It's No Good
20	20	The Cardigans, Been It
21	21	The Wallflowers, The Difference
22	22	Silverchair, Abuse Me
23	23	Jamiroquai, Virtual Insanity
24	24	It's Choice, Not An Addict
25	25	Sublime, Wrong Way
26	26	Fox Fighters, Monkey Wrench
27	27	Tori Amos, Silent All These Years
28	28	Ben Folds Five, Bottle Of Who Could Care
29	29	Ecstasy, In My Arms
30	30	Gravity Kills, Guilt

WBCN
Boston VP/Pgm: Oedipus
MD: Carter Alac

TW	LW	1
1	1	U2, Staring At The Sun
2	2	Mighty Mighty Bosstones, The Impression
3	3	Sublime, Santena
4	4	Soundgarden, Burden In My Hand
5	5	Nirvana, Drain You
6	6	Porno For Pyros, Hard Charger
7	7	David Bowie, Dead Man Walking
8	8	Fiona Apple, Sleep To Dream
9	9	Third Eye Blind, Semi-Charmed Life
10	10	Dave Matthews Band, Crash Into Me
11	11	Matthew Sweet, Where You Get Love
12	12	Folk Implosion, Insinuation
13	13	Blur, Song 2
14	14	Veruca Salt, Volcano Girls
15	15	Bush, Greedy Fly
16	16	The Smashing Pumpkins, Eye
17	17	The Offspring, Gone Away
18	18	The Verve Pipe, The Freshmen
19	19	Meredith Brooks, Bitch
20	20	Morphine, Early To Bed
21	21	Back, The New Pollution
22	22	Live, Lakini's Juice
23	23	White Town, Your Woman
24	24	Stone Temple Pilots, Trippin' On A Hole
25	25	Sneaker Pimps, 6 Underground
26	26	Tonic, If You Could Only See
27	27	Metallica, King Nothing
28	28	Orbit, Medicine
29	29	It's Choice, Not An Addict
30	30	Alice In Chains, Agan

KLYY
Los Angeles VP Prog: Steve Blatter
MD: Sandy Horowitz

TW	LW	1
1	1	U2, Staring At The Sun
2	2	Garbage, Supervixen
3	3	Paula Cole, Where Have All The Cowboys
4	4	Depeche Mode, It's No Good
5	5	Mighty Mighty Bosstones, The Impression
6	6	Live, Rattlesnake
7	7	Luscious Jackson, Naked Eye
8	8	The Wallflowers, The Difference
9	9	Jamiroquai, Virtual Insanity
10	10	It's Choice, Not An Addict
11	11	The Cardigans, Been It
12	12	The Smashing Pumpkins, Eye
13	13	Erasure, In My Arms
14	14	Sheryl Crow, Hard To Make A Stand
15	15	Bush, Come Down
16	16	The Verve Pipe, The Freshmen
17	17	Sublime, Wrong Way
18	18	Counting Crows, Catapult
19	19	Fiona Apple, Sleep To Dream
20	20	Better Than Ezra, Desperately Wanting
21	21	Paula Cole, Where Have All The Cowboys
22	22	The Wallflowers, One Headlight
23	23	Sublime, Santena
24	24	Shawn Colvin, Sunny Came Home
25	25	Ben Folds Five, Bottle Of Who Could Care
26	26	Stone Temple Pilots, Creep
27	27	Save Ferris, The World Is New
28	28	U2, If God Will Send His Angels
29	29	Kala Shankar, Start All Over
30	30	Stone Temple Pilots, Big Empty

WPLY
Philadelphia PG: Jim McGuinn
APD: Doug Kubinski

TW	LW	1
1	1	Bush, Greedy Fly
2	2	U2, Staring At The Sun
3	3	Sublime, Santena
4	4	The Wallflowers, One Headlight
5	5	Dave Matthews Band, Crash Into Me
6	6	Live, Lakini's Juice
7	7	The Verve Pipe, The Freshmen
8	8	White Town, Your Woman
9	9	Space, Female Of The Species
10	10	Matthew Sweet, Where You Get Love
11	11	Squirrel Nut Zippers, Hell
12	12	Third Eye Blind, Semi-Charmed Life
13	13	Veruca Salt, Volcano Girls
14	14	INXS, Elegantly Wasted
15	15	Silverchair, Abuse Me
16	16	Back, The New Pollution
17	17	Cake, I Will Survive
18	18	Meredith Brooks, Bitch
19	19	Collective Soul, Precious Declaration
20	20	Luscious Jackson, Naked Eye
21	21	Paula Cole, Where Have All The Cowboys
22	22	Kala Shankar, Hey Dude
23	23	Depeche Mode, It's No Good
24	24	311, All Mixed Up
25	25	It's Choice, Not An Addict
26	26	Counting Crows, Daylight Fading
27	27	Big Head Todd & The Monsters, Resignation
28	28	Better Than Ezra, Desperately Wanting
29	29	The Smashing Pumpkins, Eye
30	30	Back, Where It's At

WHFS
Washington, DC PD: Robert Benjamin
APD: Bob Waugh

TW	LW	1
1	1	Third Eye Blind, Semi-Charmed Life
2	2	White Town, Your Woman
3	3	Sublime, Santena
4	4	Toad The Wet Sprocket, Come Down
5	5	Bush, Greedy Fly
6	6	Luscious Jackson, Naked Eye
7	7	Meredith Brooks, Bitch
8	8	Dave Matthews Band, Crash Into Me
9	9	Live, Rattlesnake
10	10	311, All Mixed Up
11	11	The Wallflowers, The Difference
12	12	The Wallflowers, One Headlight
13	13	Better Than Ezra, Desperately Wanting
14	14	The Offspring, Gone Away
15	15	Back, The New Pollution
16	16	Squirrel Nut Zippers, Hell
17	17	Depeche Mode, It's No Good
18	18	U2, Staring At The Sun
19	19	The Smashing Pumpkins, Eye
20	20	Sneaker Pimps, 6 Underground
21	21	Fiona Apple, Sleep To Dream
22	22	It's Choice, Not An Addict
23	23	The Verve Pipe, The Freshmen
24	24	Blur, Song 2
25	25	Matthew Sweet, Where You Get Love
26	26	Real Big Fish, Sell Out
27	27	Mighty Mighty Bosstones, The Impression
28	28	Veruca Salt, Volcano Girls
29	29	Jamiroquai, Virtual Insanity
30	30	Paula Cole, Where Have All The Cowboys

WNNX
Atlanta OM: Brian Phillips
PD: Leslie Fram

TW	LW	1
1	1	Depeche Mode, It's No Good
2	2	INXS, Elegantly Wasted
3	3	Third Eye Blind, Semi-Charmed Life
4	4	Live, Freaks
5	5	Collective Soul, Precious Declaration
6	6	Meredith Brooks, Bitch
7	7	The Smashing Pumpkins, Eye
8	8	Blur, Song 2
9	9	Matthew Sweet, Where You Get Love
10	10	The Offspring, Gone Away
11	11	Tonic, If You Could Only See
12	12	U2, Staring At The Sun
13	13	Sublime, Santena
14	14	It's Choice, Not An Addict
15	15	Sneaker Pimps, 6 Underground
16	16	Mighty Mighty Bosstones, The Impression
17	17	Counting Crows, Daylight Fading
18	18	Veruca Salt, Volcano Girls
19	19	Rush, Little Pink Stars
20	20	The Verve Pipe, The Freshmen
21	21	Nine Inch Nails, The Perfect Drug
22	22	Silverchair, Abuse Me
23	23	Squirrel Nut Zippers, Hell
24	24	Paula Cole, Where Have All The Cowboys
25	25	David Bowie, Dead Man Walking
26	26	Bush, Cold Contagious
27	27	Cowboy Mouth, Jenny Says
28	28	Better Than Ezra, Desperately Wanting
29	29	Kala Shankar, Start All Over
30	30	Sponge, Have You Seen Mary

KITS
San Francisco VP/Pgm.: Richard Sands
APD: Roland West

TW	LW	1
1	1	Third Eye Blind, Semi-Charmed Life
2	2	Meredith Brooks, Bitch
3	3	Depeche Mode, It's No Good
4	4	The Wallflowers, One Headlight
5	5	Sublime, Santena
6	6	U2, Staring At The Sun
7	7	Back, The New Pollution
8	8	Luscious Jackson, Naked Eye
9	9	Jamiroquai, Virtual Insanity
10	10	White Town, Your Woman
11	11	Mighty Mighty Bosstones, The Impression
12	12	Real Big Fish, Sell Out
13	13	The Cardigans, Been It
14	14	The Verve Pipe, The Freshmen
15	15	311, All Mixed Up
16	16	Squirrel Nut Zippers, Hell
17	17	The Smashing Pumpkins, Eye
18	18	The Offspring, Gone Away
19	19	Ben Folds Five, Bottle Of Who Could Care
20	20	Duran Duran, Out Of My Mind
21	21	Monica, What Do You Want From Me?
22	22	Toad The Wet Sprocket, Come Down
23	23	Space, Female Of The Species
24	24	Daft Punk, Da Funk
25	25	Fiona Apple, Sleep To Dream
26	26	Live, Freaks
27	27	Soundgarden, Blow Up The Outside World
28	28	Stone Temple Pilots, Lady Picture Show
29	29	Sublime, Wrong Way
30	30	B.F., Blue Sides

KDGE
Dallas PD: Joel Folger
MD: Mike Peer

TW	LW	1
1	1	Back, The New Pollution
2	2	Live, Lakini's Juice
3	3	Dave Matthews Band, Crash Into Me
4	4	Matchbox 20, Push
5	5	INXS, Elegantly Wasted
6	6	Meredith Brooks, Bitch
7	7	White Town, Your Woman
8	8	It's Choice, Not An Addict
9	9	Depeche Mode, It's No Good
10	10	The Verve Pipe, The Freshmen
11	11	Veruca Salt, Volcano Girls
12	12	Jewel, You Were Meant For Me
13	13	Third Eye Blind, Semi-Charmed Life
14	14	The Wallflowers, One Headlight
15	15	Red Hot Chili Peppers, Love Rollercoaster
16	16	Jamiroquai, Virtual Insanity
17	17	Squirrel Nut Zippers, Hell
18	18	311, Down
19	19	Garbage, #1 Crush
20	20	Luscious Jackson, Naked Eye
21	21	Cake, The Distance
22	22	The Wallflowers, The Difference
23	23	Sublime, Santena
24	24	The Smashing Pumpkins, Eye
25	25	Social Distortion, I Was Wrong
26	26	Garbage, Only Happy When It Rains
27	27	INXS, Elegantly Wasted
28	28	Ben Folds Five, Bottle Of Who Could Care
29	29	Toad The Wet Sprocket, Come Down
30	30	U2, Staring At The Sun

WHYT
Detroit PD: Garrett Michaels
APD/MD: Alex Tear

TW	LW	1
1	1	White Town, Your Woman
2	2	The Wallflowers, One Headlight
3	3	Duncan Sheik, Barely Breathing
4	4	Jewel, You Were Meant For Me
5	5	Live, Rattlesnake
6	6	Dave Matthews Band, Crash Into Me
7	7	Paula Cole, Where Have All The Cowboys
8	8	Shawn Colvin, Sunny Came Home
9	9	Luscious Jackson, Naked Eye
10	10	Sublime, Santena
11	11	Sublime, What I Got
12	12	INXS, Elegantly Wasted
13	13	The Cardigans, Lovefol
14	14	Collective Soul, Precious Declaration
15	15	U2, Staring At The Sun
16	16	Third Eye Blind, Semi-Charmed Life
17	17	Sheryl Crow, Everyday Is A Wedding Road
18	18	Tori Amos, Silent All These Years
19	19	Ben Folds Five, Bottle Of Who Could Care
20	20	Counting Crows, A Long December
21	21	Tonic, If You Could Only See
22	22	Sarah McLachlan, Possession
23	23	Toad The Wet Sprocket, Come Down
24	24	No Doubt, Don't Speak
25	25	Better Than Ezra, Desperately Wanting
26	26	Depeche Mode, It's No Good
27	27	Matthew Sweet, Where You Get Love
28	28	Mighty Mighty Bosstones, The Impression
29	29	The Smashing Pumpkins, Eye
30	30	Cowboy Mouth, Jenny Says

KEGE
Miamiapolis PD: John Lassman
MD: Mike Hanson

TW	LW	1
1	1	The Verve Pipe, The Freshmen
2	2	Matchbox 20, Long Day
3	3	Veruca Salt, Volcano Girls
4	4	The Wallflowers, One Headlight
5	5	The Verve Pipe, The Freshmen
6	6	U2, Staring At The Sun
7	7	White Town, Your Woman
8	8	Tonic, If You Could Only See
9	9	Meredith Brooks, Bitch
10	10	Third Eye Blind, Semi-Charmed Life
11	11	Squirrel Nut Zippers, Hell
12	12	Live, Freaks
13	13	Counting Crows, Daylight Fading
14	14	Live, Lakini's Juice
15	15	The Offspring, Gone Away
16	16	It's Choice, Not An Addict
17	17	Collective Soul, Precious Declaration
18	18	Real Big Fish, Sell Out
19	19	Matchbox 20, Push
20	20	Luscious Jackson, Naked Eye
21	21	Toad The Wet Sprocket, Come Down
22	22	Abra Moore, Four Leaf Clover
23	23	Jamiroquai, Virtual Insanity
24	24	Nine Inch Nails, The Perfect Drug
25	25	The Wallflowers, The Difference
26	26	Local H, Bound For The Floor



★ ★ ★ **AIRPOWER** ★ ★ ★

(Minimum 1,100 detections for the first time)

Total Plays/Gain

DEPECHE MODE 1303/235

It's No Good (Mute/Reprise)

Total Stations: 66/Chart Move: 22-17

Heavy (30+ plays): 13 KCXX, KENZ, KHTY, KITS, KLYY, KROQ, KWOD, KXPK, KXRR, WNNX, WRLG, WRXR, XHRM

Medium (15-29): 34 KAEP, KDGE, KICT, KISF, KJEE, KLZR, KNDD, KNRK, KOME, KPOI, KROX, KTCL, KTEG, KZON, WAQZ, WBRU, WCY, WENZ, WEQX, WFNX, WGRD, WHFS, WHYT, WKQX, WLUM, WPBZ, WPLY, WQBK, WQXA, WXEG, WXRK, WXZZ, WZRH

Light (Under 15): 19

New Airplay This Week: 7 WBCN, WBZU, WEND, WKDF, WPLA, WXEG, WXRK

AIRPOWER BOUND

Total Plays/Gain

BEN FOLDS FIVE 990/24

Battle Of Who Could Care Less (550 Music)

Total Stations: 61/Chart Move: 26-22

Heavy (30+ plays): 5 KLZR, WBZU, WFNX, WRXR, WZRH

Medium (15-29): 27 KDGE, KFMA, KICT, KISF, KITS, KLYY, KROX, KTCL, KWOD, KXRR, WBCN, WBRU, WEDG, WENZ, WEQX, WGRD, WHYT, WMRO, WPBZ, WQXA, WRLG, WROX, WRXQ, WRZ, WWCD, WXEG, XHRM

Light (Under 15): 29

New Airplay This Week: 3 KMYZ, KXPK, WXNR

BLUR 986/161

Song 2 (Food/Parlophone/Virgin)

Total Stations: 61/Chart Move: 30-23

Heavy (30+): 3 CIMX, KXRR, WBZU

Medium (15-29): 28 KFMA, KHTY, KICT, KISF, KJEE, KLZR, KNDD, KNRK, KOME, KROX, KTCL, WBCN, WBRU, WEDG, WENZ, WEQX, WFNX, WHFS, WKQX, WLUM, WNNX, WNYE, WPBZ, WQBK, WRLG, WROX, WRXR, WZRH

Light (Under 15): 30

New Airplay This Week: 9 KCXX, KFRR, KMYZ, KROX, WAQZ, WGRD, WPLY, WQXA, WXEG

SQUIRREL NUT ZIPPERS 943/169

Hell (Mammoth)

Total Stations: 55/Chart Move: 31-24

Heavy (30+): 6 KJEE, KOME, KROX, KXRR, WKQX, XHRM

Medium (15-29): 28 KDGE, KEGE, KFMA, KFRR, KGDE, KICT, KISF, KITS, KNDD, KNRK, KROQ, KXPK, WBRU, WCY, WEND, WENZ, WEQX, WHFS, WHYT, WMRO, WNNX, WPBZ, WPLY, WRLG, WXEG, WXRK, WZRH, XTRA

Light (Under 15): 21

New Airplay This Week: 4 KGDE, WGRD, WPBZ, WPLA

FIONA APPLE 788/18

Sleep To Dream (Clean Slate/World)

Total Stations: 48/Chart Move: 32-28

Heavy (30+): 1 KHTY

Medium (15-29): 29 CIMX, KCXX, KENZ, KFMA, KICT, KLYY, KOME, KPOI, KROQ, KROX, KTCL, KXRR, WBCN, WBRU, WCY, WDEG, WENZ, WEQX, WFNX, WHFS, WKQX, WMRO, WQBK, WQXA, WWCD, WXDX, WXEG, WZRH, XHRM

Light (Under 15): 18

New Airplay This Week: 1 WHYT

BUSH 727/125

Cold Contagious (Trauma/Interscope)

Total Stations: 59/Chart Move: Debut 32

Heavy (30+): 1 WRLG

Medium (15-29): 18 CIMX, KICT, KISF, KJEE, KLZR, KNRK, KOME, KROQ, KXTE, WCY, WDEG, WENZ, WKDF, WNNX, WNYE, WRXQ, WXRK, XTRA

Light (Under 15): 40

New Airplay This Week: 8 KAEP, KPOI, KROX, WBRU, WHFS, WKRL, WQBK, WQXA

PAULA COLE 724/43

Where Have All The Cowboys Gone? (Imago/Warner Bros.)

Total Stations: 43/Chart Move: 35-33

Heavy (30+): 5 KLYY, KTEG, WHYT, WXNR, WXZZ

Medium (15-29): 17 KAEP, KDGE, KROX, WAQZ, WBRU, WDEG, WENZ, WHFS, WKQX, WLIR, WNNX, WPBZ, WPLY, WQXA, WXDX, WZRH, XHRM

Light (Under 15): 21

New Airplay This Week: 3 KCXX, WEDG, WXEG

LIVE 723/278

Freaks (Radioactive/MCA)

Total Stations: 50/Chart Move: Debut 34

Heavy (30+): 4 KOME, KWOD, KXTE, WLUM

JAMIROQUAI 460/79

Virtual Insanity (Work)

Total Stations: 36

Heavy (30+): 2 KHTY, XHRM

Medium (15-29): 17 CIMX, KDGE, KEGE, KFMA, KITS, KJEE, KLYY, KNRK, KPOI, KROQ, KTCL, WEQX, WFNX, WHFS, WWCD, WXEG, WZRH

Light (Under 15): 17

New Airplay This Week: 3 KJEE, WXEG, XTRA

REEL BIG FISH 427/80

Sell Out (Mojo/Universal)

Total Stations: 36

Heavy (30+): 0

Medium (15-29): 16 KEDG, KEGE, KISF, KITS, KJEE, KNDD, KNRK, KOME, KROQ, KTCL, KWOD, WFNX, WHFS, WPLA, WZRH, XHRM

Light (Under 15): 20

New Airplay This Week: 2 KEGE, KJEE

COUNTING CROWS 423/201

Daylight Fading (DGC/Geffen)

Total Stations: 37

Heavy (30+): 1 XHRM

Medium (15-29): 11 KAEP, KEGE, KFMA, KGDE, KPOI, KTEG, WBRU, WNNX, WPLY, WQXA, WWCD

Light (Under 15): 25

New Airplay This Week: 10 KEDJ, KITS, KNRK, KPNT, KROX, KXRR, WBRU, WENZ, WFNX, WKDF, WRLG, WROX, WRXQ, WXEG

ORBIT 678/30

Medicine (Baby Come Back) (A&M)

Total Stations: 47/Chart Move: 39-35

Heavy (30+): 0

Medium (15-29): 21 KHTY, KICT, KLZR, KNDD, KNRK, KNRK, KXTE, WBRU, WBZU, WCY, WENZ, WEQX, WGRD, WKDF, WQBK, WRLG, WROX, WRXQ, WXEG, WZRH, XTRA

Light (Under 15): 26

New Airplay This Week: 4 CIMX, KROX, WEND, WQXA

COWBOY MOUTH 416/61

Jenny Says (MCA)

Total Stations: 30

Heavy (30+): 1 WBZU

Medium (15-29): 13 KCXX, KMYZ, KNRK, KPNT, KROX, KTCL, WHYT, WKDF, WLUM, WNNX, WRLG, WRXQ, WZRH

Light (Under 15): 16

New Airplay This Week: 3 KCXX, KROX, KTCL

FOUNTAINS OF WAYNE 370/47

Sink To The Bottom (Scratchie/TAG/Atlantic)

Total Stations: 30

Heavy (30+): 1 KXRR

Medium (15-29): 14 KFMA, KISF, KLZR, KROX, KZON, WENZ, WLUM, WMRO, WXEG, WZRH, XHRM, XTRA

Light (Under 15): 17

New Airplay This Week: 2 KTCL, WKRL

DUNCAN SHEIK 315/-20

Barely Breathing (Atlantic)

Total Stations: 19

Heavy (30+): 3 WAQZ, WHYT, WXZZ

Medium (15-29): 4 KLYY, WLIR, WXDX, WZRH

Light (Under 15): 12

New Airplay This Week: 1 KDGE

BETTER THAN EZRA 304/76

Long Lost (Swell/Elektra/EEG)

Total Stations: 32

Heavy (30+): 0

Medium (15-29): 9 KFMA, KLZR, KPOI, KTCL, KTOZ, KZON, WRXQ, WXNR, WZRH

Light (Under 15): 23

New Airplay This Week: 5 KHTY, KPOI, WLUM, WXEG, WXNR

DURAN DURAN 298/-8

Out Of My Mind (Virgin)

Total Stations: 23

Heavy (30+): 1 XHRM

Medium (15-29): 9 KENZ, KICT, KITS, KROX, KTCL, KZON, WAQZ, WXEG, WZRH

Light (Under 15): 13

ERASURE 293/-12

In My Arms (Mute/Maverick/Warner Bros.)

Total Stations: 30

Heavy (30+): 0

Medium (15-29): 10 KENZ, KHTY, KJEE, KLYY, KROX, KTCL, KTEG, WBZU, WZRH, XHRM

Light (Under 15): 20

New Airplay This Week: 2 KTEG, WKQX

NAKED 291/39

Man's Chinese (Red Ant)

Total Stations: 26

Heavy (30+): 2 KEDJ, WBZU

Medium (15-29): 5 KEDG, KXTE, WEQX, WKRL, WQBK

Light (Under 15): 19

New Airplay This Week: 1 WRXQ

MOST NEW AIRPLAY THIS WEEK

No. Of Stations

TOAD THE WET SPROCKET 23

Come Down (Columbia)

COUNTING CROWS 15

Daylight Fading (DGC/Geffen)

SILVERCHAIR 13

Freak (Epic)

INDIGO GIRLS 11

Shame On You (Epic)

LIVE 10

Freaks (Radioactive/MCA)

STAR 69 286/11

I'm Insane (Radioactive/MCA)

Total Stations: 26

Heavy (30+): 0

Medium (15-29): 5 KCXX, KJEE, KLZR, KROX, KTCL

Light (Under 15): 21

New Airplay This Week: 3 KWOD, KZON, XHRM

BLOODHOUND GANG 286/70

Why's Everybody Always Pickin' On Me (Republic/Geffen)

Total Stations: 25

Heavy (30+): 1 KEDJ

Medium (15-29): 7 KEDG, KFRR, KTCL, WENZ, WRLG, WROX, XTRA

Light (Under 15): 17

New Airplay This Week: 6 KEGE, KNRK, KNRK, KXRR, WEND, XTRA

JANE JENSEN 262/32

More Than I Can (Filip/Interscope)

Total Stations: 27

Heavy (30+): 0

Medium (15-29): 8 KEDG, KICT, KROX, WDGE, WEQX, WKRL, WMRO, WRXR

Light (Under 15): 19

New Airplay This Week: 2 WDGE, WRXR

THE WALLFLOWERS 245/44

The Difference (Interscope)

Total Stations: 23

Heavy (30+): 0

Medium (15-29): 7 CIMX, KDGE, KEGE, KLYY, WHFS, WNNX, WWCD

Light (Under 15): 16

New Airplay This Week: 5 CIMX, KISF, WGRD, WLIR, WNNX

★ INDIGO GIRLS 209/114

Shame On You (Epic)

Total Stations: 27

Heavy (30+): 0

Medium (15-29): 3 WEQX, WOXY, WXZZ

Light (Under 15): 24

New Airplay This Week: 11 KAEP, KENZ, KLYY, KMYZ, WBRU, WBZU, WMRO, WNNX, WPLY, WWCD, WXDX

DISHWALLA 196/7

Give (A&M)

Total Stations: 14

Heavy (30+): 0

Medium (15-29): 8 KAEP, KCXX, KHTY, KJEE, KTOZ, KZON, WHYT, XHRM

Light (Under 15): 6

New Airplay This Week: 2 KJEE, WLIR

KORN 191/6

A.D.I.D.A.S. (Immortal/Epic)

Total Stations: 24

Heavy (30+): 1 KXRR

Medium (15-29): 2 WBZU, WROX

Light (Under 15): 21

★ DAFT PUNK 191/73

Da Funk (Soma/Virgin)

Total Stations: 51

Heavy (30+): 0

Medium (15-29): 0

Light (Under 15): 51

New Airplay This Week: 5 KDGE, KNDD, WENZ, WKQX, XHRM

LESS THAN JAKE 185/-1

Automatic (Capitol)

Total Stations: 25

Heavy (30+): 0

Medium (15-29): 4 KHTY, KJEE, KROX, KWOD

Light (Under 15): 21

New Airplay This Week: 3 KOME, WBCN, WPLA

★ NO DOUBT 183/122

Sunday Morning (Trauma/Interscope)

Total Stations: 26

Heavy (30+): 1 KROQ

Medium (15-29): 3 KEDJ, KEGE, WLUM

Light (Under 15): 22

New Airplay This Week: 6 KLYY, KNDD, KOME, WKQX, WLUM, WZRH

ROLLINS BAND 182/45

Starve (DreamWorks/Geffen)

Total Stations: 40

Heavy (30+): 0

SONG ACTIVITY REPORTS

For Week Ending April 13, 1997



Broadcast Data Systems



Table for Fiona Apple: Sleep To Dream (Clean Slate/Work). Total Stations: 48. Chart Move: 32-28.

Table for Beck: The New Pollution (DGC/Geffen). Total Stations: 73. Chart Move: 11-9.

Table for Ben Folds Five: Battle Of Who Could Care Less (550 Music). Total Stations: 61. Chart Move: 26-22.

Table for Blur: Song 2 (Food/Parlophone/Virgin). Total Stations: 61. Chart Move: 30-23.

Table for Meredith Brooks: Bltch (Capitol). Total Stations: 72. Chart Move: 17-13.

Table for Bush: Cold Contagious (Trauma/Interscope). Total Stations: 59. Chart Move: Debut 32.

Table for Paula Cole: Where Have All The Cowboys Gone? (Imago/Warner Bros.). Total Stations: 43. Chart Move: 35-33.

Table for Counting Crows: Daylight Fading (DGC/Geffen). Total Stations: 37. Chart Move: 37.

Table for Cowboy Mouth: Jenny Says (MCA). Total Stations: 30. Chart Move: 30.

Table for Depeche Mode: It's No Good (Mute/Reprise). Total Stations: 66. Chart Move: 22-17.

Table for Fountains of Wayne: Sink To The Bottom (Scratchie/TAG/Atlantic). Total Stations: 30. Chart Move: 30.

Table for INXS: Elegantly Wasted (Mercury). Total Stations: 75. Chart Move: 16-15.

Table for Jamiroquai: Virtual Insanity (Work). Total Stations: 36. Chart Move: 36.

Table for K's Choice: Not An Addict (550 Music). Total Stations: 65. Chart Move: 20-18.

Table for Live: Freaks (Radioactive/MCA). Total Stations: 50. Chart Move: Debut 34.



SONG ACTIVITY REPORTS



For Week Ending April 13, 1997

Detailed song tracking information for the last 3 weeks for all songs showing increased play this week. Total plays and gain do not include video play. Markets listed in order of population.

Table for MATCHBOX 20: Push (Lava/Atlantic). Total Stations: 35. Chart Move: 12-12. Lists stations like New York, L.A., Chicago, San Fran, Phila, Detroit, Dallas, Wash., DC, Houston, Boston, Atlanta, Seattle, Long Isl., San Diego, Minn., St. Louis, Pitts., Phoenix, Port., OR, Cincinn., Kan.City, Rivers, Milwauk., Sacram., San Jose, San Jose, Colum., OH, Norfolk.

Table for THE MIGHTY MIGHTY BOSSTONES: The Impression That I Get (Big Rig/Mercury). Total Stations: 71. Chart Move: 12-12. Lists stations like New York, L.A., Chicago, San Fran, Phila, Detroit, Dallas, Wash., DC, Houston, Boston, Atlanta, Seattle, Long Isl., San Diego, Minn., St. Louis, Pitts., Phoenix, Port., OR, Cincinn., Kan.City, Rivers, Milwauk., Sacram., San Jose, San Jose, Colum., OH, Norfolk.

Table for MORPHINE: Early To Bed (DreamWorks/Rykodisc/Geffen). Total Stations: 41. Chart Move: 12-12. Lists stations like New York, L.A., Chicago, San Fran, Phila, Detroit, Dallas, Wash., DC, Houston, Boston, Atlanta, Seattle, Long Isl., San Diego, Minn., St. Louis, Pitts., Phoenix, Port., OR, Cincinn., Kan.City, Rivers, Milwauk., Sacram., San Jose, San Jose, Colum., OH, Norfolk.

Table for THE OFFSPRING: Gone Away (Columbia). Total Stations: 65. Chart Move: 7-7. Lists stations like New York, L.A., Chicago, San Fran, Phila, Detroit, Dallas, Wash., DC, Houston, Boston, Atlanta, Seattle, Long Isl., San Diego, Minn., St. Louis, Pitts., Phoenix, Port., OR, Cincinn., Kan.City, Rivers, Milwauk., Sacram., San Jose, San Jose, Colum., OH, Norfolk.

Table for ORBIT: Medicine (Baby Come Back) (A&M). Total Stations: 47. Chart Move: 39-35. Lists stations like New York, L.A., Chicago, San Fran, Phila, Detroit, Dallas, Wash., DC, Houston, Boston, Atlanta, Seattle, Long Isl., San Diego, Minn., St. Louis, Pitts., Phoenix, Port., OR, Cincinn., Kan.City, Rivers, Milwauk., Sacram., San Jose, San Jose, Colum., OH, Norfolk.

Table for REEL BIG FISH: Sell Out (Mojo/Universal). Total Stations: 36. Chart Move: 427/80. Lists stations like New York, L.A., Chicago, San Fran, Phila, Detroit, Dallas, Wash., DC, Houston, Boston, Atlanta, Seattle, Long Isl., San Diego, Minn., St. Louis, Pitts., Phoenix, Port., OR, Cincinn., Kan.City, Rivers, Milwauk., Sacram., San Jose, San Jose, Colum., OH, Norfolk.

Table for SILVERCHAIR: Freak (Epic). Total Stations: 46. Chart Move: Debut 39. Lists stations like New York, L.A., Chicago, San Fran, Phila, Detroit, Dallas, Wash., DC, Houston, Boston, Atlanta, Seattle, Long Isl., San Diego, Minn., St. Louis, Pitts., Phoenix, Port., OR, Cincinn., Kan.City, Rivers, Milwauk., Sacram., San Jose, San Jose, Colum., OH, Norfolk.

Table for THE SMASHING PUMPKINS: Eye (Nothing/Interscope). Total Stations: 70. Chart Move: 13-14. Lists stations like New York, L.A., Chicago, San Fran, Phila, Detroit, Dallas, Wash., DC, Houston, Boston, Atlanta, Seattle, Long Isl., San Diego, Minn., St. Louis, Pitts., Phoenix, Port., OR, Cincinn., Kan.City, Rivers, Milwauk., Sacram., San Jose, San Jose, Colum., OH, Norfolk.

Table for SNEAKER PIMPS: 6 Underground (Clean Up/Virgin). Total Stations: 45. Chart Move: Debut 40. Lists stations like New York, L.A., Chicago, San Fran, Phila, Detroit, Dallas, Wash., DC, Houston, Boston, Atlanta, Seattle, Long Isl., San Diego, Minn., St. Louis, Pitts., Phoenix, Port., OR, Cincinn., Kan.City, Rivers, Milwauk., Sacram., San Jose, San Jose, Colum., OH, Norfolk.

Table for SQUIRREL NUT ZIPPERS: Hell (Mammoth). Total Stations: 55. Chart Move: 31-24. Lists stations like New York, L.A., Chicago, San Fran, Phila, Detroit, Dallas, Wash., DC, Houston, Boston, Atlanta, Seattle, Long Isl., San Diego, Minn., St. Louis, Pitts., Phoenix, Port., OR, Cincinn., Kan.City, Rivers, Milwauk., Sacram., San Jose, San Jose, Colum., OH, Norfolk.

Table for THIRD EYE BLIND: Semi-Charmed Life (Elektra/EEG). Total Stations: 74. Chart Move: 10-6. Lists stations like New York, L.A., Chicago, San Fran, Phila, Detroit, Dallas, Wash., DC, Houston, Boston, Atlanta, Seattle, Long Isl., San Diego, Minn., St. Louis, Pitts., Phoenix, Port., OR, Cincinn., Kan.City, Rivers, Milwauk., Sacram., San Jose, San Jose, Colum., OH, Norfolk.

Table for TOAD THE WET SPROCKET: Come Down (Columbia). Total Stations: 46. Chart Move: 474/435. Lists stations like New York, L.A., Chicago, San Fran, Phila, Detroit, Dallas, Wash., DC, Houston, Boston, Atlanta, Seattle, Long Isl., San Diego, Minn., St. Louis, Pitts., Phoenix, Port., OR, Cincinn., Kan.City, Rivers, Milwauk., Sacram., San Jose, San Jose, Colum., OH, Norfolk.

Table for TONIC: If You Could Only See (Polydor/A&M). Total Stations: 65. Chart Move: 18-19. Lists stations like New York, L.A., Chicago, San Fran, Phila, Detroit, Dallas, Wash., DC, Houston, Boston, Atlanta, Seattle, Long Isl., San Diego, Minn., St. Louis, Pitts., Phoenix, Port., OR, Cincinn., Kan.City, Rivers, Milwauk., Sacram., San Jose, San Jose, Colum., OH, Norfolk.

Table for THE VERVE PIPE: The Freshmen (RCA). Total Stations: 76. Chart Move: 2-2. Lists stations like New York, L.A., Chicago, San Fran, Phila, Detroit, Dallas, Wash., DC, Houston, Boston, Atlanta, Seattle, Long Isl., San Diego, Minn., St. Louis, Pitts., Phoenix, Port., OR, Cincinn., Kan.City, Rivers, Milwauk., Sacram., San Jose, San Jose, Colum., OH, Norfolk.

Table for WHITE TOWN: Your Woman (Brilliant!/Chrysalis/EMI). Total Stations: 69. Chart Move: 6-5. Lists stations like New York, L.A., Chicago, San Fran, Phila, Detroit, Dallas, Wash., DC, Houston, Boston, Atlanta, Seattle, Long Isl., San Diego, Minn., St. Louis, Pitts., Phoenix, Port., OR, Cincinn., Kan.City, Rivers, Milwauk., Sacram., San Jose, San Jose, Colum., OH, Norfolk.

POWER PLAYLISTS™

KFOG			WXRT			WBOS		
San Francisco PD: Paul Marszalek MD: Bill Evans			Chicago VP/Programming: Norm Winer MD: Patty Martin			Boston PD: Jim Herron MD: Cliff Nash		
TW	LW		TW	LW		TW	LW	
1	24	22	1	12	11	1	24	7
2	23	16	2	12	9	2	23	18
3	22	19	3	24	21	3	22	18
4	21	22	4	10	8	4	22	20
5	21	16	5	10	10	5	22	21
6	20	21	6	10	12	6	22	21
7	20	15	7	10	10	7	22	7
8	20	21	8	10	11	8	20	17
9	18	20	9	9	4	9	18	17
10	19	10	10	12	9	10	18	15
11	16	8	11	9	8	11	18	17
12	15	13	12	9	8	12	15	15
13	13	10	13	9	7	13	16	18
14	13	10	14	9	13	14	15	20
15	10	10	15	9	15	15	13	13
16	10	22	16	8	6	16	13	10
17	10	19	17	8	9	17	10	10
18	9	11	18	8	9	18	10	10
19	9	8	19	8	6	19	12	6
20	8	20	20	8	5	20	11	9
21	8	15	21	8	8	21	11	13
22	8	9	22	8	2	22	11	10
23	7	9	23	8	8	23	11	9
24	7	19	24	8	12	24	11	9
25	7	13	25	8	5	25	10	8
26	7	3	26	7	8	26	10	10
27	5	8	27	7	9	27	10	9
28	4	7	28	7	7	28	10	14
29	4	6	29	7	10	29	10	11
30	4	7	30	7	7	30	10	8

KTCZ			KBCO			WHPT		
Minneapolis PD: Lauren MacLeash MD: Jane Fredericksen			Denver PD: Dave Benson MD: Scott Arbough			Tampa PD: Chuck Beck APD/MD: Chris Taylor		
TW	LW		TW	LW		TW	LW	
1	24	19	1	24	17	1	33	31
2	22	18	2	24	21	2	32	32
3	21	20	3	24	24	3	32	32
4	20	22	4	22	23	4	31	32
5	20	19	5	22	17	5	29	23
6	18	20	6	22	20	6	23	24
7	13	12	7	15	10	7	23	23
8	13	13	8	14	13	8	23	23
9	13	13	9	13	15	9	22	18
10	13	10	10	14	15	10	21	21
11	12	13	11	14	16	11	15	15
12	12	14	12	13	14	12	18	10
13	11	18	13	13	13	13	18	16
14	11	7	14	13	14	14	18	4
15	11	13	15	13	16	15	17	11
16	10	6	16	13	17	16	15	16
17	10	11	17	13	18	17	15	15
18	10	6	18	13	18	18	15	15
19	10	10	19	13	18	19	15	15
20	10	8	20	12	13	20	14	13
21	10	5	21	12	13	21	14	16
22	10	5	22	12	13	22	14	16
23	9	9	23	12	16	23	14	9
24	7	24	24	12	15	24	13	14
25	6	25	25	12	10	25	11	8
26	6	3	26	11	7	26	11	0
27	6	4	27	11	16	27	10	9
28	6	6	28	11	7	28	9	8
29	6	6	29	11	7	29	9	6
30	6	6	30	10	18	30	9	8

WVRV			KMTT			CIDR			KINK			WXRV			WKOC		
St. Louis PD: Scott Strong MD: Mike Richter			Seattle SM: Chris Mays MD: Dean Carlson			Detroit PD: Murray Brookshaw MD: Ann DeLisi			Portland, OR PD/MD: Carl Widing			Boston PD: Joanne Doody MD: Mike Mullaney			Norfolk PD: Perry Stone MD: Holly Williams		
TW	LW		TW	LW		TW	LW		TW	LW		TW	LW		TW	LW	
1	41	38	1	22	22	1	31	30	1	8	5	1	21	5	1	31	30
2	39	34	2	20	23	2	31	30	2	6	4	2	20	10	2	29	28
3	39	37	3	19	21	3	30	30	3	6	4	3	18	22	3	29	26
4	36	35	4	19	5	4	30	24	4	6	9	4	18	17	4	26	26
5	35	35	5	18	18	5	29	28	5	5	7	5	17	15	5	25	25
6	34	34	6	18	21	6	29	30	6	5	5	6	17	13	6	25	19
7	31	37	7	18	11	7	22	21	7	5	3	7	17	12	7	23	25
8	28	23	8	14	9	8	22	21	8	5	8	8	16	8	8	22	22
9	26	28	9	12	8	9	22	22	9	5	5	9	16	11	9	20	23
10	26	18	10	10	9	10	22	23	10	5	3	10	16	12	10	20	21
11	26	21	11	10	11	11	21	21	11	4	2	11	15	7	11	18	12
12	24	23	12	10	11	12	21	22	12	4	2	12	14	12	12	18	13
13	24	28	13	10	12	13	21	21	13	4	2	13	14	13	13	18	12
14	24	20	14	10	14	14	21	16	14	4	3	14	13	14	14	18	13
15	22	0	15	9	8	15	16	15	15	4	7	15	13	15	15	18	9
16	22	27	16	9	10	16	15	11	16	4	1	16	13	16	16	17	15
17	22	17	17	9	17	17	15	12	17	4	2	17	12	17	17	17	16
18	17	25	18	8	6	18	14	18	18	4	4	18	11	17	18	17	14
19	13	10	19	7	5	19	12	13	19	4	3	19	11	9	19	12	0
20	12	13	20	7	9	20	12	12	20	4	3	20	11	7	20	8	3
21	12	11	21	7	5	21	12	11	21	4	3	21	11	7	21	7	7
22	12	12	22	6	5	22	11	11	22	4	2	22	11	7	22	7	7
23	11	9	23	6	2	23	11	11	23	4	2	23	11	7	23	7	7
24	11	9	24	6	2	24	11	11	24	4	2	24	11	7	24	7	7
25	10	11	25	6	20	25	11	11	25	4	2	25	11	7	25	6	4
26	10	12	26	6	26	26	10	10	26	4	2	26	10	12	26	6	5
27	10	7	27	6	5	27	10	10	27	4	1	27	10	0	27	6	6
28	10	10	28	6	3	28	10	10	28	4	2	28	10	14	28	6	3
29	10	4	29	6	13	29	10	10	29	4	3	29	10	14	29	5	3
30	10	7	30	6	4	30	10	10	30	3	3	30	10	11	30	5	3

The chart and Power Playlists are based on a national sample of data compiled by Broadcast Data Systems' Radio Track service. 25 Triple-A stations are electronically monitored 24 hours a day, 7 days a week. Songs ranked by number of detections in monitored week.

THIS WEEK	LAST WEEK	WKS. ON CHART	TITLE/LABEL/PROMOTION LABEL	ARTIST	DETECTIONS	
					TW	LW
			★ ★ ★ NO. 1 ★ ★ ★			
1	1	7	STARRING AT THE SUN (RCA)	U2	512	483
2	2	9	THE FRESHMEN (RCA)	THE VERVE PIPE	423	396
3	4	5	ELEGANTLY WASTED (MERCURY)	INXS	380	358
4	3	13	SUNNY CAME HOME (COLUMBIA)	SHAWN COLVIN	314	349
5	11	5	DAYLIGHT FADING (DGC/GEFFEN)	COUNTING CROWS	287	261
6	8	10	SOMEONE WHO'S COOL (ELEKTRA/VEG)	ODDS	285	277
7	6	15	YOU WERE MEANT FOR ME (ATLANTIC)	JEWEL	272	278
8	5	30	ONE HEADLIGHT (INTERSCOPE)	THE WALLFLOWERS	269	318
9	18	2	SHAME ON YOU (EPIC)	INDIGO GIRLS	239	192
10	15	6	EARLY TO BED (DREAMWORKS/RYKODISC/GEFFEN)	MORPHINE	238	213
11	13	11	SLEEP TO DREAM (CLEAN SLATE/WORK)	FIONA APPLE	238	219
12	7	22	CRASH INTO ME (RCA)	DAVE MATTHEWS BAND	237	265
13	9	22	EVERYDAY IS A WINDING ROAD (A&M)	SHERYL CROW	231	232
14	12	14	RESIGNATION SUPERMAN (REVOLUTION)	BIG HEAD TODD & THE MONSTERS	224	255
15	19	2	ALL FOR YOU (UNIVERSAL)	SISTER HAZEL	202	174
16	NEW		COME DOWN (COLUMBIA)	TOAD THE WET SPROCKET	200	23
17	10	21	A LONG DECEMBER (DGC/GEFFEN)	COUNTING CROWS	196	217
18	17	5	LIE TO ME (A&M)	JONNY LANG	186	194
19	RE-ENTRY		SHE RUNS AWAY (ATLANTIC)	DUNCAN SHEIK	184	163
20	NEW		WHERE YOU GET LOVE (ZOO/VOLCANO)	MATTHEW SWEET	163	153

Records showing an increase in detections over the previous week, regardless of chart movement. A record which has been on the chart for more than 20 weeks will not receive a bullet, even if it registers an increase in detections. Airpower awarded to those records which attain 250 detections for the first time. If two records are tied in number of plays, the record being played on more stations is placed first. ©1997, Billboard/BPI Communications.

THIS IS YOUR ONLY CHANCE!

1997 **Billboard & Monitor** AIRPLAY
Radio Seminar & Awards

NOTE

Don't MISS OUT!

• Nominee Ballot •
May 2nd issue of Airplay Monitor

(Finalist ballot will appear in the 7/18 issue of Monitor and the 7/26 issue of Billboard)

For Week Ending April 13, 1997

COMBINED ROCK MONITOR AIRPLAY										AIRPLAY THIS WEEK BY FORMAT									
TW	LW	WKS	TITLE (LABEL/PROMOTION LABEL)	ARTIST	THIS WEEK			LAST WEEK			MAINSTREAM			MODERN			TRIPLE-A		
					Audience (millions)	Detections No.	Rank	Audience (millions)	Detections No.	Rank	Audience (millions)	Detections No.	Rank	Audience (millions)	Detections No.	Rank	Audience (millions)	Detections No.	Rank
1	1	8	STARING AT THE SUN (ISLAND)	U2	30.1518	4651	1	31.4516	4703	1	11.2827	1728	3	15.9415	2411	1	2.9276	512	1
2	2	22	ONE HEADLIGHT (INTERSCOPE)	THE WALLFLOWERS	25.3300	3687	4	27.5794	3936	2	10.1690	1491	6	13.5978	1927	4	1.5632	269	8
3	5	9	GONE AWAY (COLUMBIA)	THE OFFSPRING	23.9639	3547	5	22.9271	3350	6	11.8498	1686	4	12.0813	1843	7	0.0328	18	—
4	6	11	THE FRESHMEN (RCA)	THE VERVE PIPE	22.4768	3747	3	21.4090	3528	5	5.1577	956	12	14.8698	2368	2	2.4493	423	2
5	3	11	PRECIOUS DECLARATION (ATLANTIC)	COLLECTIVE SOUL	22.3414	3820	2	23.3931	3904	3	13.7476	2073	1	8.1130	1621	11	0.4808	126	—
6	4	13	LAKINI'S JUICE (RADIOACTIVE/MCA)	LIVE	19.4642	3022	6	23.3261	3535	4	9.1656	1369	7	10.1121	1622	10	0.1865	31	—
7	8	12	VOLCANO GIRLS (MINTY FRESH/OUTPOST/GEFFEN)	VERUCA SALT	17.6604	2746	7	16.8443	2715	7	6.8795	1048	9	10.7499	1683	8	0.0310	15	—
8	9	14	SANTERIA (GASOLINE ALLEY/MCA)	SUBLIME	15.8184	2379	8	15.0589	2398	8	0.8571	141	—	14.7109	2125	3	0.2504	113	—
9	7	18	GREEDY FLY (TRAUMA/INTERSCOPE)	BUSH	14.4275	2018	12	17.3045	2314	9	5.6884	891	14	8.7234	1117	20	0.0157	10	—
10	10	10	YOUR WOMAN (BRILLIANT/CHRYSALIS/EMI)	WHITE TOWN	14.2898	1989	13	14.3478	1922	16	0.0200	8	—	13.8580	1892	5	0.4118	89	—
11	12	4	SEMI-CHARMED LIFE (ELEKTRA/EEG)	THIRD EYE BLIND	13.9405	2231	10	13.2972	1983	13	0.7922	221	—	12.7183	1891	6	0.4300	119	—
12	14	7	EYE (NOTHING/INTERSCOPE)	THE SMASHING PUMPKINS	13.0103	1559	22	12.9392	1447	24	0.2163	26	—	12.5274	1502	14	0.2666	31	—
13	11	19	CRASH INTO ME (RCA)	DAVE MATTHEWS BAND	13.0088	1448	25	13.2232	1510	23	0.9612	116	—	10.5178	1095	21	1.5298	237	12
14	20	3	IF YOU COULD ONLY SEE (POLYDOR/A&M)	TONIC	12.2160	2268	9	10.5204	2006	12	5.3699	990	10	6.8003	1238	19	0.0458	40	—
15	13	9	FALLING IN LOVE (IS HARD ON THE KNEES) (COLUMBIA)	AEROSMITH	12.2039	1846	15	13.1757	1943	15	12.2014	1842	2	—	—	—	0.0025	4	—
16	16	4	THE IMPRESSION THAT I GET (BIG RIG/MERCURY)	THE MIGHTY MIGHTY BOSSTONES	11.8636	1762	17	11.8508	1729	17	0.7141	112	—	10.9904	1597	12	0.1591	53	—
17	22	3	BITCH (CAPITOL)	MEREDITH BROOKS	11.7632	1616	19	9.7456	1289	27	0.5060	63	—	11.2552	1552	13	0.0020	1	—
18	19	7	THE NEW POLLUTION (DGC/GEFFEN)	BECK	11.6659	1784	16	10.8682	1684	18	0.1944	50	—	11.3512	1681	9	0.1203	53	—
19	18	5	ELEGANTLY WASTED (MERCURY)	INXS	11.1038	2142	11	10.9973	1981	14	1.5145	346	37	7.2123	1416	15	2.3770	380	3
20	15	12	KING NOTHING (ELEKTRA/EEG)	METALLICA	11.0324	1516	23	11.9195	1578	22	8.7449	1366	8	2.2875	150	—	—	—	—
21	23	6	SIGN OF THE TIMES (EMI)	QUEENSRYCHE	9.8125	1613	20	9.7423	1578	21	9.8028	1608	5	0.0083	4	—	0.0014	1	—
22	17	14	ABUSE ME (EPIC)	SILVERCHAIR	9.6075	1665	18	11.5115	2067	10	4.3481	704	16	5.2259	932	25	0.0335	29	—
23	21	6	WHERE YOU GET LOVE (ZOO/VOLCANO)	MATTHEW SWEET	9.6060	1972	14	10.2069	2042	11	1.8889	450	27	6.9222	1359	16	0.7949	163	20
24	38	2	IT'S NO GOOD (MUTE/REPRISE)	DEPECHE MODE	9.5882	1346	26	7.1775	1094	35	0.0696	17	—	9.4685	1303	17	0.0501	26	—
25	30	3	PUSH (LAVA/ATLANTIC)	MATCHBOX 20	9.1370	1559	21	8.0574	1320	26	4.7513	949	13	4.0477	527	—	0.3380	83	—
26	31	4	NOT AN ADDICT (SSO MUSIC)	K'S CHOICE	8.5161	1314	27	8.0487	1168	31	0.1509	49	—	8.3568	1264	18	0.0084	1	—
27	25	10	TUMBLE IN THE ROUGH (ATLANTIC)	STONE TEMPLE PILOTS	8.4663	1476	24	9.0606	1631	20	6.3697	980	11	2.0759	487	—	0.0207	9	—
28	28	22	DESPERATELY WANTING (SWELL/ELEKTRA/EEG)	BETTER THAN EZRA	8.3568	1249	30	8.3687	1279	28	2.7198	365	35	5.3550	831	26	0.2820	53	—
29	24	8	YOU WERE MEANT FOR ME (ATLANTIC)	JEWEL	8.2378	1122	35	9.4093	1185	30	0.4320	40	—	6.2373	810	27	1.5685	272	7
30	NEW		FREAKS (RADIOACTIVE/MCA)	LIVE	8.1703	1136	33	4.7961	627	75	2.6519	412	31	5.5154	723	34	0.0030	1	—
31	NEW		HELL (MAMMOTH)	SQUIRREL NUT ZIPPERS	8.1283	977	44	7.0011	792	57	0.0286	14	—	8.0598	943	24	0.0399	20	—
32	29	34	WHAT I GOT (GASOLINE ALLEY/MCA)	SUBLIME	8.0010	1131	34	7.9396	1150	32	1.8077	288	—	5.9569	785	—	0.2364	58	—
33	NEW		COLD CONTAGIOUS (TRAUMA/INTERSCOPE)	BUSH	7.5845	1273	29	6.6713	1028	39	3.1673	546	23	4.4172	727	32	—	—	—
34	34	12	NAKED EYE (GRAND ROYAL/CAPITOL)	LUSCIOUS JACKSON	7.5681	824	56	7.4576	826	53	0.0786	14	—	7.3434	745	30	0.1461	65	—
35	27	20	A LONG DECEMBER (DGC/GEFFEN)	COUNTING CROWS	7.5661	1203	31	8.2782	1364	25	2.4486	372	34	3.7576	635	37	1.3599	196	17
36	37	28	BLOW UP THE OUTSIDE WORLD (A&M)	SOUNDGARDEN	7.4636	985	43	7.3850	1022	40	3.8368	505	—	3.6233	477	—	0.0035	3	—
37	NEW		DAYLIGHT FADING (DGC/GEFFEN)	COUNTING CROWS	7.2925	969	45	5.8983	647	71	2.0247	259	—	3.3903	423	—	1.8775	287	5
38	32	25	ALL MIXED UP (CAPRICORN/MERCURY)	311	7.0706	1041	39	7.9676	1048	38	0.5958	73	—	6.4340	946	—	0.0408	22	—
39	NEW		SONG 2 (FOOD/PARLOPHONE/VIRGIN)	BLUR	7.0254	1083	37	6.6507	887	48	0.2657	97	—	6.7597	986	23	—	—	—
40	35	51	TRIPPIN' ON A HOLE IN A PAPER HEART (ATLANTIC)	STONE TEMPLE PILOTS	6.9468	926	48	7.4090	930	47	2.8649	415	—	4.0775	506	—	0.0044	5	—

Records showing an increase in audience over the previous week, regardless of chart movement. Rankings broken down by mainstream, modern and triple-A formats (on right side of this page) correspond to charts printed in this week's Monitor and therefore rankings do not exist for recurrences and records below No. 40 (No. 20 for triple-A). Audience computed by cross-referencing exact times of airplay with Arbitron listener data. ©1997, Billboard/BPI Communications.

Reach
the
World's
Greatest
Radio
Minds...

AIRPLAY
Monitor

CLASSIFIED

CONTACT: Laura Rivchun - 212-536-5058

h e a r i n g i s b e l i e v i n g

**#1 MOST REQUESTED SONG ON ROCK RADIO
4 CONSECUTIVE WEEKS**

**TOP 5 ALL ROCK RADIO CHARTS!!
OVER 1600 SPINS**

Q U E E N S R Ÿ C H E

H E A R I T H E N O W F R O N T I E R

The new album featuring "Sign Of The Times"

POWER ROTATION INCLUDES:

**KSHE 25x
WFBQ 16x
KLPX 28x
WTFX 27x**

**KREV 25x
WDHA 35x
WCCC 25x
WTUE 28x**

**KISS 34x
KISW 31x
KLBJ 28x
WTPA 28x**

**WMMS 37x
KTXQ 34x
KOMP 30x
KTUX 36x**

**WYST 45x
KEZO 28x
WIOT 30x
KXUS 20x**

**WRIF 28x
KUPD 28x
WNCN 30x
KNCN 34x**

**OVER 130,000 ALREADY SOLD
TOUR BEGINS JUNE 17TH**

THIS WEEK	LAST WEEK	WKS. ON CHART	MAINSTREAM		DETECTIONS		
			TITLE/LABEL/PROMOTION LABEL	ARTIST	TW	LW	
			★★★★ No. 1 ★★★★★				
1	1	11	PRECIOUS DECLARATION ATLANTIC 3 weeks at No. 1	COLLECTIVE SOUL	2073	2080	
2	2	9	FALLING IN LOVE (IS HARD ON THE KNEES) COLUMBIA	AEROSMITH	1842	1936	
3	3	7	STARING AT THE SUN ISLAND	U2	1728	1743	
4	5	9	GONE AWAY COLUMBIA	THE OFFSPRING	1686	1565	
5	4	6	SIGN OF THE TIMES EMI	QUEENSRYCHE	1608	1577	
6	7	23	ONE HEADLIGHT INTERSCOPE	THE WALLFLOWERS	1491	1505	
7	6	13	LAKINI'S JUICE RADIOACTIVE/MCA	LIVE	1369	1548	
8	8	15	KING NOTHING ELEKTRA/VEEG	METALLICA	1366	1396	
9	10	10	VOLCANO GIRLS MINTY FRESH/OUTPOST/GEFFEN	VERUCA SALT	1048	1007	
10	16	3	IF YOU COULD ONLY SEE POLYDOR/A&M	TONIC	990	806	
11	9	11	TUMBLE IN THE ROUGH ATLANTIC	STONE TEMPLE PILOTS	980	1058	
12	13	10	THE FRESHMEN RCA	THE VERVE PIPE	956	894	
13	14	7	PUSH LAVA/ATLANTIC	MATCHBOX 20	949	843	
14	11	18	GREEDY FLY TRAUMA/INTERSCOPE	BUSH	891	980	
15	15	8	LIE TO ME A&M	JONNY LANG	844	827	
16	12	14	ABUSE ME EPIC	SILVERCHAIR	704	926	
17	21	4	MANN'S CHINESE RED ANT	NAKED	642	533	
18	18	12	HOPE IN A HOPELESS WORLD CAPRICORN/MERCURY	WIDESPREAD PANIC	625	717	
19	19	32	HERO OF THE DAY ELEKTRA/VEEG	METALLICA	622	614	
20	17	12	RESIGNATION SUPERMAN REVOLUTION	BIG HEAD TODD & THE MONSTERS	619	801	
21	26	5	RHINOSAUR A&M	SOUNDGARDEN	556	466	
22	20	6	DRIVEN ANTHEM/ATLANTIC	RUSH	550	563	
23	29	2	COLD CONTAGIOUS TRAUMA/INTERSCOPE	BUSH	546	425	
24	27	4	STALE AWARE/CAPITOL	STIR	522	449	
25	25	5	EXACTLY WHAT YOU WANTED INTERSCOPE	HELMET	505	490	
26	23	10	H. ZOO/VOLCANO	TOOL	470	522	
27	24	6	WHERE YOU GET LOVE ZOO/VOLCANO	MATTHEW SWEET	450	495	
28	NEW		DON'T WANNA BE HERE WARNER BROS.	COOL FOR AUGUST	446	231	
29	22	8	OUTTASITE (OUTTA MIND) REPRISE	WILCO	422	523	
30	34	2	MEDICINE (BABY COME BACK) A&M	ORBIT	415	340	
31	NEW		FREAKS RADIOACTIVE/MCA	LIVE	412	181	
32	35	3	WELCOME MERCURY	OUTHOUSE	389	334	
33	38	2	I DON'T MIND THE ENCLAVE	DRAIN S.T.H.	376	317	
34	28	18	A LONG DECEMBER DGC/GEFFEN	COUNTING CROWS	372	433	
35	31	22	DESPERATELY WANTING SWELL/ELEKTRA/VEEG	BETTER THAN EZRA	365	379	
36	NEW		JENNY SAYS MCA	COWBOY MOUTH	349	271	
37	39	2	ELEGANTLY WASTED MERCURY	INXS	346	312	
38	33	22	JUST ANOTHER DAY MERCURY	JOHN MELLENCAMP	340	375	
39	NEW		LIVE TOMORROW COLUMBIA	CHALK FARM	338	283	
40	NEW		SAY GOODBYE RED ANT	CHEAP TRICK	331	280	

THIS WEEK	LAST WEEK	WKS. ON CHART	MODERN		DETECTIONS		
			TITLE/LABEL/PROMOTION LABEL	ARTIST	TW	LW	
			★★★★ No. 1 ★★★★★				
1	1	7	STARING AT THE SUN ISLAND 3 weeks at No. 1	U2	2411	2477	
2	2	11	THE FRESHMEN RCA	THE VERVE PIPE	2368	2238	
3	3	15	SANTERIA GASOLINE ALLEY/MCA	SUBLIME	2125	2145	
4	4	20	ONE HEADLIGHT INTERSCOPE	THE WALLFLOWERS	1927	2113	
5	6	10	YOUR WOMAN BRILLIANT/CHRYSALIS/EMI	WHITE TOWN	1892	1822	
6	10	5	SEMI-CHARMED LIFE ELEKTRA/VEEG	THIRD EYE BLIND	1891	1685	
7	7	8	GONE AWAY COLUMBIA	THE OFFSPRING	1843	1777	
8	9	12	VOLCANO GIRLS MINTY FRESH/OUTPOST/GEFFEN	VERUCA SALT	1683	1693	
9	11	10	THE NEW POLLUTION DGC/GEFFEN	BECK	1681	1597	
10	5	13	LAKINI'S JUICE RADIOACTIVE/MCA	LIVE	1622	1951	
11	8	11	PRECIOUS DECLARATION ATLANTIC	COLLECTIVE SOUL	1621	1698	
12	12	8	THE IMPRESSION THAT I GET BIG RIG/MERCURY	THE MIGHTY MIGHTY BOSSTONES	1597	1578	
13	17	3	BITCH CAPITOL	MEREDITH BROOKS	1552	1232	
14	13	6	EYE NOTHING/INTERSCOPE	THE SMASHING PUMPKINS	1502	1400	
15	16	5	ELEGANTLY WASTED MERCURY	INXS	1416	1311	
16	14	7	WHERE YOU GET LOVE ZOO/VOLCANO	MATTHEW SWEET	1359	1394	
			★★★★ AIRPOWER ★★★★★				
17	22	3	IT'S NO GOOD MUTE/EPIC	DEPECHE MODE	1303	1068	
18	20	5	NOT AN ADDICT 550 MUSIC	K'S CHOICE	1264	1130	
19	18	5	IF YOU COULD ONLY SEE POLYDOR/A&M	TONIC	1238	1165	
20	15	18	GREEDY FLY TRAUMA/INTERSCOPE	BUSH	1117	1324	
21	19	22	CRASH INTO ME RCA	DAVE MATTHEWS BAND	1095	1139	
22	26	5	BATTLE OF WHO COULD CARE LESS 550 MUSIC	BEN FOLDS FIVE	990	966	
23	30	3	SONG 2 FOOD/PARLOPHONE/VIRGIN	BLUR	986	825	
24	31	3	HELL MAMMOTH	SQUIRREL NUT ZIPPERS	943	774	
25	21	14	ABUSE ME EPIC	SILVERCHAIR	932	1108	
26	29	23	DESPERATELY WANTING SWELL/ELEKTRA/VEEG	BETTER THAN EZRA	831	835	
27	27	7	YOU WERE MEANT FOR ME ATLANTIC	JEWEL	810	882	
28	32	6	SLEEP TO DREAM CLEAN SLATE/WORK	FIONA APPLE	788	770	
29	24	13	THE PERFECT DRUG NOTHING/INTERSCOPE	NINE INCH NAILS	785	956	
30	33	26	NAKED EYE GRAND ROYAL/CAPITOL	LUSCIOUS JACKSON	745	748	
31	23	12	FEMALE OF THE SPECIES GUT REACTION/UNIVERSAL	SPACE	744	978	
32	NEW		COLD CONTAGIOUS TRAUMA/INTERSCOPE	BUSH	727	602	
33	35	2	WHERE HAVE ALL THE COWBOYS GONE? IMAGO/WARNER BROS.	PAULA COLE	724	681	
34	NEW		FREAKS RADIOACTIVE/MCA	LIVE	723	445	
35	39	2	MEDICINE (BABY COME BACK) A&M	ORBIT	678	648	
36	28	7	HEY DUDE COLUMBIA	KULA SHAKER	666	867	
37	34	19	A LONG DECEMBER DGC/GEFFEN	COUNTING CROWS	635	714	
38	37	21	THIRTY-THREE VIRGIN	THE SMASHING PUMPKINS	597	668	
39	NEW		FREAK EPIC	SILVERCHAIR	589	400	
40	NEW		6 UNDERGROUND CLEAN UP/VIRGIN	SNEAKER PIMPS	589	554	

Records showing an increase in detections over the previous week, regardless of chart movement. A record which has been on either chart for more than 20 weeks will not receive a bullet, even if it registers an increase in detections. Airpower awarded to those records which attain 800 detections (mainstream) or 1,100 (modern) for the first time. If two records are tied in number of plays, the record being played on more stations is placed first. Records below the top 20 are removed from the chart after 26 weeks.

MUSIC HEAVY

LIVE

freaks

the second song and video from the platinum album *secret samadhi*

debut week BDS = 1200+ spins!!

produced by Jay Healy and LIVE mixed by Tom Lord-Alge management: David Sestak and Peter Freedman ©1997 Radioactive Records J.V. <http://radioactive.net/live.html>



now touring worldwide