

ROCK ■ AIRPLAY Monitor

• We Listen To Radio •

August 22, 1997 \$4.95 Volume 4 • No. 34

ROCK HIGHLIGHTS

MAINSTREAM

#1

COLLECTIVE SOUL

Listen (ATLANTIC)

★★★ AIRPOWER ★★★

JACKYL • *Locked & Loaded* (EPIC)
OUR LADY PEACE • *Superman's Dead* (COLUMBIA)
PAUL RODGERS • *Soul Of Love* (VELVEL)

GOING FOR AIRPLAY

BEHAN JOHNSON • *World Keeps Spinning* (RCA)
COLLECTIVE SOUL • *Blame* (ATLANTIC)
FREDDY JONES BAND • *Wonder* (CAPRICORN/MERCURY)
LOVERBOY • *Big Picture* (CMC INTERNATIONAL)
THE NIXONS • *The Fall* (MCA)
THE REFRESHMENTS • *Good Year* (MERCURY)
SISTER MACHINE GUN • *Think* (WAX TRAX!/TVT)

MODERN

#1

SUGAR RAY

Fly (LAVA/ATLANTIC)

★★★ AIRPOWER ★★★

THE MIGHTY MIGHTY BOSSTONES • *The Rascal King* (BIG RIG/MERCURY)

GOING FOR AIRPLAY

COLLECTIVE SOUL • *Blame* (ATLANTIC)
DANCE HALL CRASHERS • *Lost Again* (510/MCA)
THE JOYKILLER • *Supervision* (EPITAPH)
K'S CHOICE • *A Sound That Only You Can Hear* (550/MUSIC)
LONGPIGS • *On And On* (MOTHER/ISLAND)
MAGNET • *Summer & Winter* (PC MUSIC)
THE NIXONS • *The Fall* (MCA)
SINEAD O'CONNOR • *This Is To Mother You* (COLUMBIA)
PENNY DREADFULS • *Unravel* (RESTLESS)
THE REFRESHMENTS • *Good Year* (MERCURY)
SISTER MACHINE GUN • *Think* (WAX TRAX!/TVT)

TRIPLE-A

#1

SARAH MCLACHLAN

Building A Mystery (ARISTA)

★★★ AIRPOWER ★★★

BLUES TRAVELER • *Most Precarious* (A&M)

Album Rock Rebounds, Modern And Classic Flat In National Spring Arbs

by Sean Ross

Those pesky teens. No major format admits to targeting them. And yet the fluctuations in their radio listening—often the result of being involuntarily exiled from one format or another—may have figured into the fate of two seemingly unlikely formats in the spring, according to Billboard/Airplay Monitor's exclusive national Arbitron ratings.

Adult contemporary stations, which slid sharply from 1992 to '95, have been creeping forward over the last three books, up 14.3-14.5-14.7-14.8 since last summer. Much of that rise has taken place at the format's younger end. AC stations were up 8.3-9.0 in the teen demo from winter to spring. They were also up 15.5-16.1 in the 18-34 demo. By contrast, AC was up slightly in 25-54 (17.1-17.5) and off very slightly in 35-64 (16.7-16.6).

Teen listening had been in the 7- to 8-share range at AC since the early '90s, largely a result of the number of markets that no longer offered a top 40 option. Now, with top 40 beginning to resurface in most markets, the

lower-end boost at AC may also be tied to the rise of modern AC stations, as well as a more rock-based mix at other hot AC and adult top 40 outlets. The net result is that AC, which lost the No. 1 national spot to news/talk radio in 1994, is closer than it has been in years to N/T, which was off 16.6-15.6 this spring.

Now, consider what's happening at country. After rebounding slightly in the winter for only the second time in an otherwise continuous slide since fall '92, country was down again in the spring, 10.6-10.4, for its lowest 12-plus number since the summer of 1990. Country is flat in 35-64 at an 11.9 share and off only slightly in 25-54 (10.9-10.7). But it's down noticeably in 18-34 (10.0-9.6), and particularly among teens (7.6-6.7).

Country has now trailed AC among teens for a year and a half. But the 6.7 share was its lowest teen number since winter 1992 B.C.—Before Cyrus—when Billy Ray gave the format a bona fide teen idol. Then again, the country/rock flavor that seemed to coincide with a 12.34 jump at a format

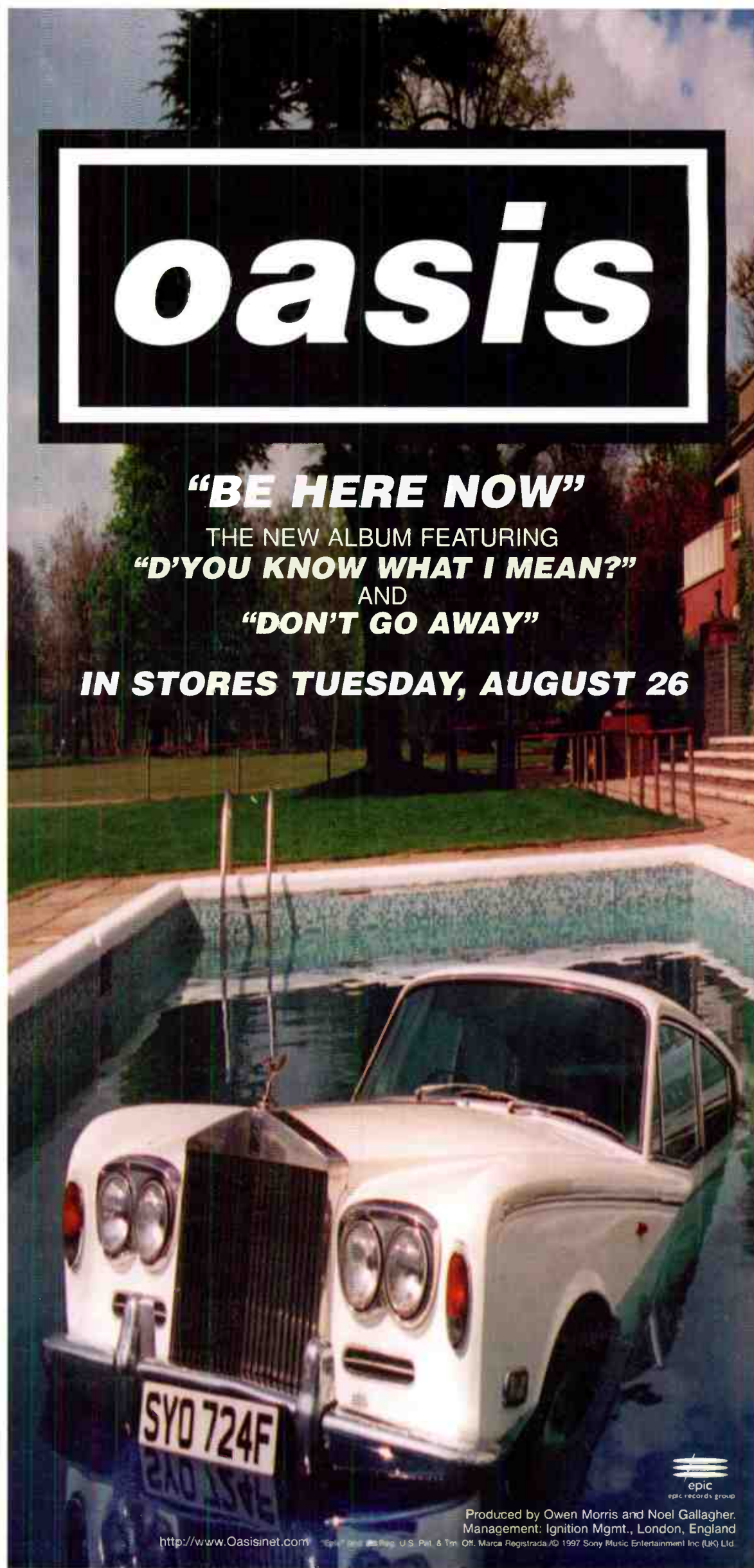
Continued on page 6

oasis

"BE HERE NOW"

THE NEW ALBUM FEATURING
"D'YOU KNOW WHAT I MEAN?"
AND
"DON'T GO AWAY"

IN STORES TUESDAY, AUGUST 26



epic
epic records group

Produced by Owen Morris and Noel Gallagher.
Management: Ignition Mgmt., London, England

<http://www.Oasisnet.com>

© 1997 Sony Music Entertainment Inc. (UK) Ltd.

CLOSER

"LET HER GO"

f r o m t h e a l b u m

Don't Walk



#5 MOST ADDED AT MODERN ROCK OUT OF THE BOX!

STATIONS INCLUDE: WBZU, KNSX, WNFZ, WHMP, KFGX, WOXY & MORE

SPINNING AT:

WXRK	WBCN
WBRU	WRZX
KXTE	WEDG
WQXA	WXDX

**SOLD OUT DATES WITH
MONACO AND SUPERGRASS**

Produced and Mixed by Ed Buller for 140dB
Management: Nevil Dwek for Dmr Productions



www.revolution-online.com

Here We Go With A Jacor Fold-In

Jacor strikes again. According to press reports, a Denver Post ad for new KBPI morning team Kerry and Kerns, when folded properly, contains hidden copy that reads, "Fuck Alice," and shows a raised middle finger. The reference is to rival KALC. In other Jacor news, VP of programming Tom Owens is upped to senior VP of programming, and Jacor Lexington, Ky., expands OM Doug Hammond's duties to cover all six market properties, including album WKQQ.

Veteran Phoenix personality Carla Foxx has been released from jail after serving a one-year sentence for leaving the scene of an accident after she struck and killed a pedestrian in November '95. Foxx was most recently with modern hits KHTC.

Four of the 21 applicants for Manchester, U.K.'s new commercial license are proposing album or rock AC formats, according to Music & Media's programming editor, Mike McGeever. Three other hopefuls have lodged alternative/modern rock format proposals with the U.K. Radio Authority. The widely sought-after license has a potential audience of 4.3 million adults, making it the largest single commercial license outside of London.

BUSINESS: NEWS CORP. NABS HERITAGE

News Corp. closed its \$1.3 billion merger with Heritage Media Aug. 20, setting the stage for Sinclair's purchase of 24 Heritage radio properties.

Modern KDGE/classic rock KZPS VP/GM Tom Glade moves to Washington D.C., as VP/GM of top 40 WWZZ (Z104) and its sisters.

Classic rock WAXQ New York GM George Wolfson exits, as does promotion director Scott Lief, who is replaced by Max Felder, last morning producer at crosstown jazz WQCD.

N/T WTMJ Milwaukee PD Steve Wexler goes to Tucson, Ariz., to be VP/GM of classic rock KKHG and sports sisters KFFN/AC KMXZ.

Modern XHRM San Diego installs a new antenna, enabling it to cover all of North County.

SFX is moving forward with plans to syndicate the Lex and Terry morning show, currently simulcast on KTXQ (Q102) Dallas and WFYV Jacksonville, Fla.

Beasley Broadcasting picks up modern adult WJBX (99X) and nostalgia WJST Fort Myers, Fla., from Linn Broadcasting.

Evergreen's Scott Ginsburg will be the "hon-

oree" at the 12th annual Bayliss Media Roast, to be held Oct. 29 at New York's Waldorf-Astoria Hotel. Call 408-624-1536.

PROGRAMMING: RIVER FLOWS UP DIAL

Classic hits WRVI Louisville, Ky., moves from 94.7 to the 105.9 frequency, which was previously occupied by co-owned modern AC WHITE. At press time, WRVI's frequency was still stunting. Jacor's WSRF nabs the Bob and Tom morning show from rival WTFX, replacing Markham and Murphy. WSRF is looking for a PD; APD Scott Fitzgerald, who had been handling those

duties, is still in afternoons.

Album WKLQ Grand Rapids, Mich., OM Tom Marshall exits.

Veteran album rock programmer Greg Mull hangs out the shingle on his own consultancy.

Former classic rock KKFM Colorado Springs, Colo., PD Paul Johnson is the new PD at similarly formatted WKLR Richmond, Va.

Amid rumors about active rock KDOT Reno, Nev., dumping the format for top 40, PD/afternoons Steve Funk and MD/nights Chris Payne exit. OM Rob Williams is interim PD and continues in mornings. Reach Funk at 702-746-3658.

MD/afternoon man Jeremy Hegna is now PD at classic rock KBFX Anchorage, Alaska.

WBDR (the Border) Watertown, N.Y., is now being simulcast on former classic rock WWLF.

PEOPLE: BRANDMEIER ON THE MOVE?

According to The Chicago Sun-Times, "Jonathan Brandmeier packed up his Chicago office over the weekend and began preparing to move to Los Angeles. Although no new deal has been signed, Johnny B. tentatively is expected to start Sept. 15 as morning host at KYSR (Star 98.7) and syndicate the... show back to his current outlet on WMVP-AM."

Modern KZON Phoenix Jim Sharpe trades p.m. drive for a.m. drive, joining Ted Simons. Doc Ellis, up from nights to afternoons, is replaced by Laura K. Smith, last PD of album WRQR Wilmington, N.C.

Former Ron and Ron morning show member Ron Diaz joins classic rock WTBT Tampa, Fla., for mornings. His Sept. 2 arrival coincides with a power boost that allows WTBT to cover the Tampa Bay area.

D-Day, formerly with modern KTBZ Houston, joins crosstown modern AC KKPN in afternoons.

Album WPDH Poughkeepsie, N.Y., morning man Bob Wolf joins album WPYX Albany, N.Y., for same; Chris Rush co-hosts. Traffax reporter Lee Rockwell will be producer/news person.

Modern WGRD Grand Rapids, Mich., APD Sue Jordan exits the station and the business.

With album KLOS L.A. afternoon jock Joe Benson crossing to oldies KCBS for mornings, KLOS PD John Duncan now has three openings at the station. During his search, Duncan brings back some names from KLOS history. In the coming weeks Jim Ladd, Frasier Smith, and Geno Michellini will take a turn at the mike.

Classic rock WXCD Chicago recreates a classic radio era each weeknight, 12-5 a.m., with the Alan Stagg-hosted "Sanctuary." PD Bill Gamble calls it "as close to progressive radio of the early '70s as you can possibly get." Sports WEEI Boston imaging director Scott McKay joins for the same. Also in Chicago, AC WPNT production director Todd Manley crosses to classic rock WCKG for the same, according to The Chicago Sun-Times. Brian Waterkotte joins WCKG as midday producer from production work at WMVP.

Top 40 KMEL San Francisco AMD Dave Daniels moves to modern adult KZZO (the Zone) Sacramento, Calif., as MD/nights. Doug Parker is promotion director, from p.m. driver/promotion at top 40 KWIN Stockton... Modern WPLY (Y100) Philadelphia taps Kelly Gross, formerly



Qualitative Sell And Phantom Cume Haunt Boulder Triple-A Summit

by Marc Schiffman

Should triple-A worry less about marketing itself to a new audience than selling to the highly desirable audience it already has? That was the key question posed by CBS Radio president Dan Mason in his keynote address at the Gavin Report's fifth annual triple-A summit, held Aug. 14-16 in Boulder, Colo. Citing his own career as a programmer-turned-executive, Mason suggested that PDs facing Telecom Act-era downsize investigate seriously the sales side of the business. Programmers, according to Mason, have the most passion for the product. Were they "used as salespeople, their passion would be killer on the street."

Mason cited the loss of triple-A KSCA Los Angeles. "It was a fabulous product, and it died because salespeople couldn't sell it," Mason said. He went so far as to suggest that stations take money from marketing and divert it to growing a sales force. "The last thing I'd want to hear is a [new] PD saying he wants 50 billboards," Mason said. Instead, he sees triple-A's potential in generating new revenue streams leveraged by a large, passionate sales force. He also envisioned stations doing three to four promos a day that bring in money, suggesting that the format "may make more money with promos than spots."

Procuring diary mentions was also a big topic in Boulder. Paragon Research unveiled a study, replicating the Arbitron diary process, to analyze the causes of "phantom cume." Post-survey interviews with participants pointed to six key reasons for unreported listening. First was the diary itself. Participants reported other family members filling out their diaries or not filling out their diary for several days. At least one respon-

dent listened to radio less so she'd have less to write down. Interpersonal dynamics was another factor, with one person citing her husband watching over her shoulder, asking her if she was going to write down his favorite station.

Changing listening habits also have an impact on diary-keeping, particularly if there's a big news event during the survey. Participants also had self-imposed thresholds for what they considered "real" or reportable listening. A listener's agenda also affected reporting. They understood that it was a survey and could have an impact on what would stay on the air, so some had overreported listening to some stations, and one participant remarked that she didn't want people to know she listened to a certain station. Location was the last culprit because of the difficulty of tracking in-car listening, especially for compulsive button-punchers. Paragon's presentation will be repeated at the New Orleans NAB meet.

One of the most telling aspects of the weekend was that after an intense session on station concerts and co-promotes, attendees heard one of the respondents to the Paragon study talk about a festival his wife heard about on the air. In the interview, the respondent said they didn't remember which station was sponsoring the concert, but they thought it was KXPK (the Peak) because Blues Traveler was on the bill. The problem was that the show was a KBCO concert and Blues Traveler wasn't even on the bill. The incident begged the question of whether the time and effort that goes into station concerts is worth it, in light of the fact that someone who was interested in the show and had a "diary" didn't even get the information right and the station never received the credit for the event.

PERSONNEL FILE BY STEVE GRAYBOW

550 Music Names Klaiman Promo VP

5 50 Music names former VP of alternative music Joel Klaiman VP of promotion; he leads the label's efforts at rock, alternative, and triple-A. Neda Tobin continues to serve as VP of rock and triple-A... MCA names Steve Zap VP of top 40 promotion and Michelle St. Clair senior director of alternative promotion. Both held similar positions at Red Ant... Justin Fontaine trades VP of promotion duties at Sony Work Group for the same with alma mater Capitol... Arista appoints former Fox Music senior VP Matthew Walden senior VP, West Coast.

Columbia Records ups Danny Cooper to associate director of promotion and shifts Boston local Dan Hubbert to Los Angeles and Houston local Shannah Miller to Boston and gives Houston to 550 Music's Mike Krauser. Los Angeles rep Greg Phifer moves from Columbia to the Work Group... Epic's Laura Curtin exits her post as VP of rock promotion; reach her at 212-462-4693.

As part of Island's recent restructuring, Atlanta local Steve Smith adds Miami duties, Detroit local Kevin Kay adds Chicago and Minneapolis, and Seattle rep Julie MacLeod adds San Francisco and Salt Lake City to her territory. Kansas City rep Kim Sanderson adds Denver, Washington, D.C.'s Katy Farrell adds the Carolinas, and Cleveland local Doug Hamann adds Nashville duties.

Volcano Records president Kevin Czinger and Rowdy Records president Dallas Austin have merged their companies to create Freeworld Entertainment, whose roster includes Tool, Matthew Sweet, the Interpreters, Size 14, and Lusk... Jeff McClusky & Associates have launched a new modern rock division, the Bridge, to be directed by former promotion assistant Thaddeus Rudd.

At Levitation, Rene Magallon, last with Discovery, joins for triple-A promotion. Former modern WLIR Long Island, N.Y., PD Ted Taylor creates the company's modern promotion arm... The purchase of Red Ant Records by venture-capital firm Wasserstein Perella & Co. has been approved by the U.S. bankruptcy court in New York.

The Rolling Stones embark on a world tour Sept. 23 in support of their upcoming release, "Bridges to Babylon," which includes contributions from Me'Shell Ndegéocello and saxophonist Wayne Shorter. Look for Blues Traveler, Sheryl Crow, Foo Fighters, Dave Matthews, and the Smashing Pumpkins to open various tour dates.

We wish a speedy recovery to the members of Roadrunner band Shelter, who were in an auto accident Aug. 16 on their way to Denver from a show in Salt Lake City. All members suffered injuries but are expected to fully recover and are recuperating in their New York home base.

Kaelin Kaptivates X-Fest Crowd, GM



Modern WRZX Indianapolis scored Kato Kaelin, left, as a host of its third X-Fest. Kaelin's shown here asking GM Chris Wheat if there's any extra space in his house for a guest.

with rival WIOQ (Q102), as promotion director.

Album WKQQ Lexington, Ky., MD/afternoons Brad Hart exits, replaced by P/T Roadkill Kessler. P/T Shea Maddox takes middays.

Modern WFNX Boston P/T Kevin Mays gets AMD stripes. Meanwhile, crosstown triple-A WBOS creative services director Adam Klein expands those duties over jazz sister WOAZ.

Midlayer/interim MD Cia Cort is now MD at KNRQ Eugene, Ore.; morning man Marconi exits. Morning co-host Jeremy Wingnut takes morning reigns for now... Album WZXL Atlantic City, N.J., officially names midlayer Kathy Coro MD.

Chris Carter, a founder of Dramarama, is hosting "The Chris Carter Mess," a weekly new-music show on modern KLYV (Y107) Los Angeles.

FREDDY JONES BAND



wonder

Produced by
David Z.

Additional
production by
Freddy Jones
Band

Mixed by
Jim Scott

Management:
Jim Grant &
Marty Diamond
for JGM/
Underdawg

the first
track
from the
forthcoming
new release
"lucid"
going
for adds
August 25th.



ALREADY ON:

WXRT	KTHX	KMMS
KFOG	KXPT	WNCS
KMTT	KFXD	KIWR
KXPK	WCBR	KBAC
KXST	WCLZ	KISM
KGSR	KRVM	KQRS
KTCZ	KERA	KLPX
KKZN	WYEP	WQKK
WMMM	WKZE	WKPE
WRLT	KMTN	WXP
WTTS	KTAO	KZYR

NEW THIS WEEK:

KENZ
WHPT
WBOS
KPIG
KFMX
WZZQ
WKHY
KEYJ
WTAL
WRKR
KQDS
KBXR

AND MANY, MANY MORE!



WATCHING THE DETECTIONS

BY NESTON HOSTEN



212-536-5039 • hosten@billboard.com

Notice Anything Different?

TWICE YEARLY, Airplay Monitor updates the order in which stations appear in the Power Playlists based on the spring and fall Arbitron books. Stations are ranked in descending order of Total Survey Area (TSA) come for the largest market in which they appear—thus album **WDHA** Morristown, N.J.'s placement reflects its come in the larger New York TSA, while most San Jose, Calif., stations reflect their San Francisco TSA come. AM/FM or FM/FM combos count if they're 100% simulcasts.

Billboard & Monitor
Radio Seminar & Awards

One more change: You'll notice that the box that once referred to Most New Airplay This Week now refers to Most New Stations. It's a minor change but one that more accurately describes what's being measured—the number of stations showing six or more

detections of a title for the first time (whereas any increase in airplay, even at a station that was already playing a song, could technically be considered new airplay).

GOT QUESTIONS? At this year's Billboard/Airplay Monitor Radio Seminar and Awards, to be held Oct. 16-18 at the Orlando Renaissance Resort in Orlando, Fla., you'll be able to ask me directly. At Saturday morning's (Oct. 18) "Hot Seat" session, **Sean Ross** and various BDS staffers will also answer your questions about how Broadcast Data Systems works, why BDS and Airplay Monitor make various decisions, and so forth, as well as to brief you about new developments at both Monitor and BDS.

For registration info, call Airplay Monitor's **Maureen Ryan** at 212-536-5002. For hotel reservations, call 407-351-5555, and be sure to mention that you're calling about the Billboard/Airplay Monitor Radio Seminar. For discounted airline flight info (as well as rental car and ground transportation), call Pepp Travel at 800-877-9770.

RADIO CONCERT MONITOR

DATE	CALL LETTERS	EVENT	SCHEDULED TO APPEAR
Aug. 23	WDHA Morristown, N.J.	Clam N' Jam 3	Coward, Naked, Purple Earth, Screamin' Cheetah Wheelies, Sweet Vine, Throwan Rocks
Aug. 23	WPLT Detroit	Planet Fest	Better Than Ezra, Caulfields, Paula Cole, Cowboy Mouth, Echo & the Bunnymen, INXS, Matchbox 20, Michael Penn
Aug. 30	KTBS Houston	Buzz Fest '97	Artificial Joy Club, Buck-O-Nine, Cowboy Mouth, Matchbox 20, Abra Moore, Silverchair, Toy Subs
Aug. 31	KUPD Phoenix	U-Fest '97	Gravity Kills, Megadeth, Misfits, Nixons
Sept. 5	WGRD Grand Rapids, Mich.	Celebration on the Grand	19 Wheels, Domestic Problems, Fat Amy, Papa Vegas, Sponge, Troll For Trout
Sept. 6	WRCX Chicago	RockStock	Brother Cane, Cool For August, Cracker, Days Of The New, Faith No More, Fat, Gravity Kills, Helmet, Joan Jett, Jimmie's Chicken Shack, Local H, Megadeth, Nixons, Seven Mary Three, Silverchair, Soak, Tenderloin, Veruca Salt
Sept. 7	KMYZ Tulsa, Okla.	Edgefest	Faith No More, Limpbiskit, Our Lady Peace, Reel Big Fish, Smash Mouth, Sugar Ray
Sept. 11	KFRR Fresno, Calif.	Birthday Bash II	Fiona Apple, Artificial Joy Club, Buck-O-Nine, Smash Mouth, Social Distortion, Sugar Ray, Summercamp
Sept. 13	KOME San Jose, Calif.	Kamp KOME 2	Fiona Apple, Blink 182, Buck-O-Nine, Cake, Local H, Matchbox 20, Reel Big Fish, Smash Mouth, Social Distortion, Sugar Ray, Third Eye Blind, Violent Femmes3

To include your station's concert information in Rock Concert Monitor, call Marc Schiffman at 212-536-5065, fax 212-536-5286, or E-mail mschiffman@billboard.com

EDITOR IN CHIEF: HESTON HOSTEN
 EDITOR: SEAN ROSS
 MANAGING EDITOR: MARC SCHIFFMAN
 MAINSTREAM ROCK/TRIPLE A CHART MANAGER: ANTHONY COLOMBO
 MODERN ROCK CHART MANAGER: MARK MARONE
 MODERN ADULT CHART MANAGER: STEVE GRAYBOW
 WRITER/REPORTER: DANA HALL
 CHART PRODUCTION MANAGER: MICHAEL CUSSON
 ASST. CHART PRODUCTION MANAGER: ALEX VITOULIS
 EDITORIAL PRODUCTION MANAGERS: BARRY BISHIN, MARCIA REPINSKI
 EDITORIAL PRODUCTION: MADELINE CARROLL, SUSAN CHICOLA,
 MARC GIAQUINTO, SARAH JOHNSON, MARIA MANILIC
 COPY EDITOR: CARL ROSEN
 ADVERTISING PRODUCTION MANAGER: LYDIA MIKULKO
 ASSOC. ADVERTISING PRODUCTION MANAGER: CINDEE WEISS
 ADVERTISING ART DIRECTOR: RAY CARLSON
 ADVERTISING PRODUCTION ARTIST: SHIRA HALFON

GENERAL MANAGER: JON GUYNN
 ACCOUNT MANAGERS: GARY NUEL, JEFF SOMERSTEIN
 ADVERTISING SERVICES MANAGER: ALYSE ZIGMAN
 SALES ASSISTANTS: EVELYN ASZODI,
 ERICA BENGTSO, TODD MAYCHER
 EDITORIAL ADVISER: TIMOTHY WHITE
 PRODUCTION DIRECTOR: MARIE GOMBERT
 DIRECTOR OF MARKETING: ELISSA TOMASETTI
 CIRCULATION DIRECTOR: JEANNE JAMIN



PRESIDENT: HOWARD LANDER
 SENIOR VP/GENERAL COUNSEL: GEORGINA CHALLIS
 VICE PRESIDENTS: KAREN OERTLEY, ADAM WHITE
 DIRECTOR OF STRATEGIC DEVELOPMENT: KEN SCHLAGER
 BUSINESS MANAGER: JOELLEN SOMMER

©1997 BPI Communications
 1515 Broadway, New York, NY 10036 212-764-7300
 For subscriptions call: 800-722-2346

Airplay Monitor reporting panels are based solely on a station's musical content.



©1997 Capricorn Records. Manufactured and Marketed by Mercury Records, a PolyGram company. <http://www.capri.com>



CHEET SHEET BY MARK MARONE

212-536-5051 • mmarone@billboard.com

Harper's 'Will To Live' The Music Life

Not unlike standing at the crossroads of traditional blues lore, **Ben Harper** reached a junction in his life. "There came a point where I said, 'Whether I can make any bread making music or not is far from the point.' I'd either pay to play or get very little to play, but I was going to play, and I was going to write," says the 27-year-old Harper, who comes from the Southern California suburb of Claremont. Indeed, the modest singer/songwriter/guitarist has been playing professionally since his 20th birthday. In June, Harper released his third album, "The Will To Live."

Since his 1994 debut, Harper has steadily been building a grass-roots following for his heartfelt blend of blues, folk, rock, soul, and funk by consistently touring with his trio. That, as well as support from fellow musicians, has garnered him a diverse group of fans. Harper has established a large base of college-age fans from playing that circuit, as well as opening shows for artists as varied as **Pearl Jam**, **Gil Scott-Heron**, **PJ Harvey**, the **Dave Matthews Band**, and **John Lee Hooker** and enjoys star status in such exotic locales as Turkey and France.

Besides his soft, soulful voice, Harper's music is best characterized by its bluesy slide and acoustic guitar elements. In fact, Harper's first professional gig was offered to him by blues legend **Taj Mahal**, who asked the young musician to join his band as his side guitar player following an appearance at a college coffeehouse.



BEN HARPER

Harper does not see himself as a blues purist so much as a conduit of its history, particularly to younger generations of fans who are increasingly unfamiliar with the blues. "So many kids [have told] me, 'Hey, man. I've heard your music, and now I listen to **Mississippi John Hurt**' or 'I have this whole blues library through listening to your music,'" he says. "To me, that's really important in carrying on the flame of the blues tradition. If I can be any part of bringing that music to a generation . . . that to me is the greatest accomplishment."

Responding to claims that blues and blues-based rock seem to have taken a back seat to other styles of music today, Harper points to **Kurt Cobain** covering **Leadbelly** and the phenomenal success of the **Robert Johnson** boxed set as just two examples of the genre's unabated popularity. "Guitar and rock music's not going anywhere. Ever. It's just got too strong of a foundation. Its roots are too deep."

Just the same, Harper is equally at home with acoustic folk songs, funk/soul grooves, and revved-up rock raves. Inspiration comes from **Jimi Hendrix** and **Lefty Frizzell** as much as **Pearl Jam** and **Run-D.M.C.**, Turkish folk music as well as **Bob Marley**. Harper's father took him to see Marley when he was 9, which Harper remembers as a spiritual awakening. Though Harper says he didn't quite grasp the magnitude of it then, "It was like witnessing a crucifixion, because he was singing for everyone, for every single person," he says with reverence. Harper even enlisted **Al Anderson**, who also played with Marley, on two tracks on "The Will To Live."

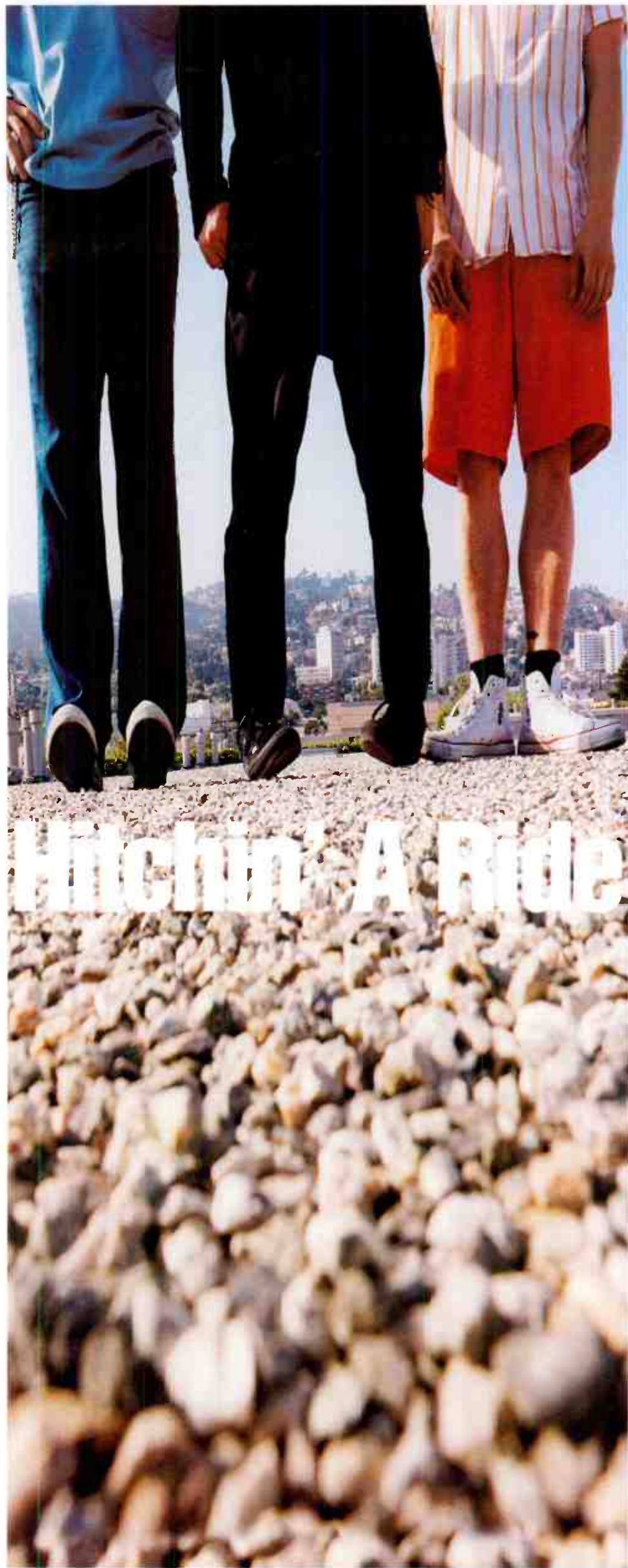
As a guitar player, Harper is known for his slide playing; his exclusive use of the turn-of-the-century, lap slide, hollow-body Weissenborn guitar has become his trademark. Originally built in the 1920s and designed for Hawaiian guitar playing, the rare Weissenborn guitar has been given a different treatment by Harper, who has taken to collecting them. He's been known to run them through a fuzzbox and a cranked-up Marshall to great effect. But the challenge of the hollow-necked acoustic, he says, comes in the approach to playing the lap guitar, which requires one to proceed as if on a harp or a piano. "They're night and day. It's definitely a different consciousness and musicality when approaching the lap slide. Whereas bottleneck slide is played like a standard guitar, but you're sliding." He says the Weissenborn's warm harp/cello-like sound was a driving catalyst in his development as a songwriter.

While Harper's reluctant to describe his own music, he's not so about the attributes of one of the inherently American art forms, the blues. "We all stand to benefit from listening to that music. No matter if you're a musician or a stockbroker, you've got to check blues music and soul music. It's helped get me through a lot of tough times," he says.

KIOZ Eagerly Anticipates 'Beaver'



With the "Leave It To Beaver" movie slated for release later this month, the original Beaver and Eddie Haskell stopped to chat with KIOZ San Diego afternoon guys B.C. and Woody. Shown, from left, are Jerry "The Beaver" Mathers, Woody, B.C., and Ken "Eddie Haskell" Osmond.



Album Rock Rebounds, Modern And Classic Flat In National Spring Arbs

Continued from page 1

not traditionally known for younger listeners has been noticeably absent in recent months, with country often sounding a lot more like the ballad- and midtempo-dominated format that it was in the mid-'80s.

BUYERS DON'T CARE. WHY SHOULD I?

Advertisers still target 25-54, of course, and so do country and AC stations. So the news of their young-end fluctuations might not seem to make much difference for either. But the numbers show that 12-24 can make a difference in a format's momentum and critical mass. And country record sales were never as strong as they were in the era when teen listening was higher (it reached double digits in '94).

Country and AC differ from top 40 and R&B radio in that there's little history of automatic teen usage. R&B and top 40 have always managed some teen numbers even though both have discouraged teens at various times and top 40 has fallen from more than a 50 share in teens in 1990 to less than 30% of teen listening today, due to several years when the format suffered from severe "25-54-itis."

R&B radio, through much of 1995-96, achieved a record-high number with each successive national ratings book. It was flat in the winter, but in the spring, R&B was up 10.9-11.0 for another record 12-plus number, and it was third overall, ahead of country (No. 4). R&B was off slightly in the teen demo (24.3-24.0), although it remained a solid No. 2 there, but it set records in 25-54 (10.5-10.7) and 35-64 (8.5-8.8), as well as with adult women (10.8-10.9).

R&B's upper-demo growth took place despite the fact that adult R&B stations, when examined separately, were flat at a 3.7 share 12-plus, suggesting that the adult rise was at mainstream R&B radio. So maybe despite the publicity that hip-hop generated during the spring, the format got an equal boost from the "Love Jones" soundtrack and all the other retro-flavored R&B music released as part of the format's neoprogressive movement.

In fifth place, top 40 was up 8.4-8.8, its best number since fall '95. Top 40 was flat in 35-64 (at a 4.4 share), and at night (11.6), but up nicely in every other daypart and demo. It went 27.8-28.9 in the teen demo, 12.9-13.4 in 18-34, and 7.0-7.2 in 25-54. Top 40 was up 7.6-7.9 in mornings, 7.0-7.4 in middays, and 9.1-9.4 in afternoons.

It's worth noting that even in this era of top 40 again playing teen-appeal music, from Hanson,

Spice Girls, the Backstreet Boys, and others, the format's biggest audience bulge is in 25-34, where it gets 25.5% of its listening, vs. 21.9% for teens and 23.4% in 18-24. Almost 25% of top 40's listening is from those over 35 years old. R&B also has its bulge in 25-34 (25.5%). AC has it in 35-44 (25.9%). Country has an even spread past age 25; its bulge is also in 35-44 (22.1%). Modern rock's bulge is in 25-34 (34.3%), despite its reputation as an 18-24 format.

ROCK REBOUNDS, CLASSICS STABLE

Album rock, which fell to its lowest point in the winter, came back 6.7-7.0, for sixth place, with its biggest rebound in 25-54 (8.1-8.6). While album and classic rock have tended to trade off good books, the ninth-place classic rock format was up slightly, 4.5-4.6, for its best book ever. The format also cracked the 5-share range for the first time in middays and afternoons (up 4.9-5.0 in both).

Even though the oldies format rebounded 6.0-6.3 in the spring from its lowest number in recent memory, format observers worry that its bulge is in the 45-54 demo (34.1% of its listening), while its 18-34-demo shares have dropped from the 5s to the 3s since '95, leading many to wonder if the format will become hard to sell in the same way that easy listening was 10-15 years ago. Classic rock seems to have a lot to do with oldies' demo shift. Many of today's classic rock stations evolved from '70s oldies and carried the 18-34s with them. Classic rock's bulge is in 35-44 (37.4%).

Tied with oldies for seventh place is Spanish radio, flat at a 6.3 share 12-plus. Spanish is up in mornings (6.1-6.5), off at nights (6.8-6.4), and flat during the rest of the day. It was off with teens (5.3-4.8) but up in 25-54 (6.6-6.8) and 35-64 (5.9-6.2).

In 10th place, modern rock has been stable at a 4.1 share for three consecutive books, down only a few tenths from its peak of a 4.4 share in early '96, despite the format's negative press. Modern's female numbers, the ones you might expect to be the hardest hit by modern AC, were at worst stymied at a relatively low level, flat in the spring at a 2.6 share, down from a peak of 2.9. With men, meanwhile, the format was up 4.6-4.7 this time, but short of modern's 5.1 share last spring.

Adult standards stations, which have grown sharply in number recently, didn't expand their audience during the spring; they were flat at a 3.5 share, followed by jazz (flat at 3.1), religious stations (flat at 2.2), and classical (2.0-1.9).

MONITOR PROFILE

Jang Credits All-Star Lineup With Classic Rock K-Fox's Stellar Rise

When Dana Jang, PD of album rock KSJO San Jose, Calif., added classic rock sister KUFX (K-Fox) to his portfolio, it was "in a lot of ways, a jukebox," he says. But by assembling an all-star lineup built around veteran Bay Area rocker Greg Kihn, Jang fueled the station's spring Arbitron rise from a 2.1 share to 4.5 12-plus.

When Jang began working with KUFX, his first move was to transfer KSJO APD/middayer Laurie Roberts, "who had strong midday numbers," to Fox for the same duties. In addition, "I located an old KOMA afternoon-drive jock who had tremendous numbers, Frank Bennett. For evenings, I was kind of left up in the air. Greg Kihn was relatively new to radio. I heard some talent there. I decided to give him a shot, and he turned out great."

Kihn, who had initially voice-tracked nights, eventually turned up in mornings

Side"; Dave Mason, "We Just Disagree"; David Bowie, "Space Oddity"; Starship, "We Built This City"; Canned Heat, "On The Road Again"; Styx, "Grand Illusion"; and Queen, "Bohemian Rhapsody."

Being a shadow market provides some unique problems when it comes to marketing. "It's sometimes a difficult challenge because . . . the cost of [San Francisco] television just doesn't warrant any marketing on that level," says Jang. "You can't really compete with the San Francisco stations that are using television quite extensively. You have to look for other means."

In response to that predicament, Jang crafted a marketing campaign with promotion/marketing director Kris Hager that he calls "one of the more aggressive campaigns seen by San Jose . . . It was a direct-mail piece with a cassette of Greg Kihn, with clips of the classic rock songs, mailed out to households with partisanship to classic rock." Besides the customary hot ZIPs, listeners in the increased coverage area were targeted.

When promoting to San Jose, Jang says, "you have to keep in mind what the lifestyle is of your average mid-30- to mid-40-year-old in the Silicon Valley. They work long hours because of the kind of affordability-index in this area. There's quite a huge amount of money that you have to spend on expenses from day care to mortgages to just your average food and gasoline costs. And a lot of the things that you do have to take place on times that these people have free, which are mainly weekends. Because you'll find that a lot of these people are working fairly late into the evening. And a lot of them have young children, and they want to get home and be with their children, so they don't want to go out during the week. You've really got to play into what their hours are like, because they're not going to drop what their normal routine is and go to a station promotion."

KUFX seeks out community events to tie into, "like going out to an arts festival on the weekend, to a chili cook-off, [or] to just an outing in the park," says Jang. "Those are the things that they want to do on the weekend. Any kind of activity that gets them out and able to take part in their own community. The thing that you've got to remember is that in a lot of areas, people want to stay in their own general vicinity. So, you need to strategically go to areas where your potential audience lives . . . We try to get a good rotation around the area, geographically. We have that ZIP code map, and we figure out where our hot ZIPs are and try to go to each of those throughout the rating period."

His latest challenge has been the launch of Susquehanna's classic hits outlet KSAN, which Jang says is still heavily automated. "They're playing a very even mix of '70s and '60s material, with an occasional 'oh wow' '50s track thrown in . . . Their signal in some of the areas of San Jose is quite marginal. So I think they would be a major competitor up in the East Bay and in the Upper Peninsula areas, but in San Jose itself, I think they're going to be a minor player."

"They're definitely pointing their guns somewhere in between K-Fox and KFRC. They're kind of not trying to [play] the doo-wop '50s of KFRC, but they're also not trying to play the late-'70s/'80s stuff of K-Fox. But I have no idea [where they're headed] until a PD and an air staff is finally decided upon."

MARC SCHIFFMAN



Dana Jang
Program Director
KSJO/KUFX San Jose

You have to keep in mind what the lifestyle is in the Silicon Valley'

after the Fox's one-year experiment with Don Imus. Despite glowing recommendations for Imus from other stations across the country that were also targeting 35-49 males, "we found the he just appealed to a very limited audience, mainly because of the huge East Coast presence of his show and the availability of other morning shows in the area that were close to what he was doing," says Jang. "And we found that there was a huge appetite for people in the classic rock cell to hear music in the morning."

As a morning man, Jang says, Kihn is "very eager to learn. He has a huge passion for music. And I think he has the talent that a lot of people just don't possess . . . He's able to relate to people on a one-to-one basis."

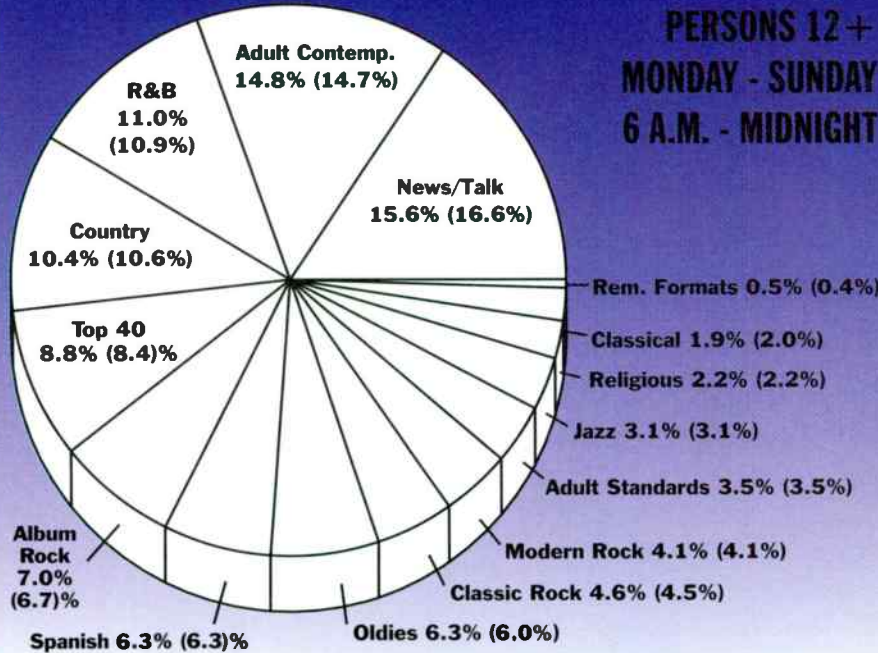
Jang then picked up ex-KFOG San Francisco morning man M. Dung for evenings and progressively "solidified [an] air staff of people that were well known in the Bay Area and well known in the classic rock arena. We put that full lineup in place in January, when M. Dung moved up here from Phoenix."

Jang credits that all-star lineup with fueling the station's spring book rise. In addition, he says, "we were able to move our antenna site from the Monterey, Calif., concentrated antenna site to virtually the same tower that KSJO was on, and we became more of a Bay Area radio station. So our coverage got a lot better in the spring book." And in San Francisco, KUFX's 12-plus numbers rose 0.7-1.4.

Here's a sample hour on KUFX: Pink Floyd, "Time"; Glenn Frey, "Smuggler's Blues"; Neil Young, "Heart Of Gold"; REO Speedwagon, "Take It On The Run"; Tom Petty & the Heartbreakers, "I Need To Know"; Rolling Stones, "Time Is On My

ARBITRON FORMAT SHARE SPRING '97

PERSONS 12+
MONDAY - SUNDAY
6 A.M. - MIDNIGHT



(Numbers in parentheses represent Winter '97 shares)

POWER PLAYLISTS

For Week Ending August 17, 1997



Playlists supplied by Broadcast Data Systems... Radio Track service...

Grid of 48 radio station playlists (KLOS, WYSP, WRCX, WMMR, KQRS, WWDC, WRIF, WFBQ, WAAF, KEGL, WKLS, KTXQ, WMMS, WRQC, KSHE, WZTA, KSJO, WIYY, WEBN, KISW, WHJY, WXTB, WONE, KBPI) with columns for station name, PD, MD, and song titles with airplay counts.



POWER PLAYLISTS

For Week Ending August 17, 1997



Playlists supplied by Broadcast Data Systems' Radio Track service. Songs ranked by number of plays in monitored week. Playlists are listed in order of TSS weekly count, beginning with the highest-counting station. Counts are updated twice yearly following the release of the Spring and Fall Arbitron surveys. The number of stations shown each week varies depending upon space.

Grid of 48 radio station playlists including WLZR, WBZZ, WJRR, WRDU, KQRC, WBAB, KISS, KUPD, WIMZ, WPYX, KIOZ, WCCC, KUFO, WDHA, KRRQ, WROQ, KATT, KXXP, KDKB, WLVQ, WNOR, WCKW, WTFX, and WTUE. Each station entry includes a list of 30 songs with their rank and a 'TW LW' column.



SONG ACTIVITY REPORTS



For Week Ending August 17, 1997

Detailed song tracking information for the last 3 weeks for all songs showing increased play this week. Total plays and gain do not include video play. Markets listed in order of population.

Table with 12 columns: Artist, Song, Total Plays/Gain, Chart Move, and 10 market columns (Dayton, Jacksonville, Austin, Richmond, Albany, Greenv., Tulsa, Scranton, Tucson, McAllen, Fresno, Ft. Rap., Syracuse, Knoxville, Ft. Pasco, Albuquerque, Omaha, Harrisb., Toledo, New Bern, L.Rock, Bakersf., Char., SC, Col., SC, D.Moines, Youngst., Wichita, New Haven, Col.Spr., Roanoke, Morristown, Lex., KY, Hunts., Jackson, Ft. Myers, Shrev., Port., ME, W.B.L.M., Col., GA, W.V.R.K., Gr.Bay, W.A.P.L., Santa Barb., K.T.Y.O., Burling., W.I.Z.N.).

Table with 12 columns: Artist, Song, Total Plays/Gain, Chart Move, and 10 market columns (Dayton, Jacksonville, Austin, Richmond, Albany, Greenv., Tulsa, Scranton, Tucson, McAllen, Fresno, Ft. Rap., Syracuse, Knoxville, Ft. Pasco, Albuquerque, Omaha, Harrisb., Toledo, New Bern, L.Rock, Bakersf., Char., SC, Col., SC, D.Moines, Youngst., Wichita, New Haven, Col.Spr., Roanoke, Morristown, Lex., KY, Hunts., Jackson, Ft. Myers, Shrev., Port., ME, W.B.L.M., Col., GA, W.V.R.K., Gr.Bay, W.A.P.L., Santa Barb., K.T.Y.O., Burling., W.I.Z.N.).

SONG ACTIVITY REPORTS

For Week Ending August 17, 1997



Radio Data Systems logo and detailed song ranking information

Table with 6 columns: LIVE (1342/21), LYNRYD SKYNYRD (425/10), MIGHTY JOE PLUM (853/50), THE OFFSPRING (775/66), OUR LADY PEACE (834/36). Each column contains station codes, song titles, and chart positions.

Table with 6 columns: REEF (456/8), PAUL RODGERS (825/54), STIR (474/25), SUGAR RAY (455/94), TOOL (543/11). Each column contains station codes, song titles, and chart positions.

POWER PLAYLISTS



For Week Ending August 17, 1997

Playlists supplied by Broadcast Data Systems' Radio Track service. Songs ranked by number of plays in monitored week. Playlists are listed in order of...

WEDG

Buffalo PD: John Hager MD: Rich Wall

Table with 3 columns: Rank, Song Title, and TW/LW values for WEDG Buffalo.

KCCX

Kansas City PD: Jon Anthony MD: Jason Justice

Table with 3 columns: Rank, Song Title, and TW/LW values for KCCX Kansas City.

WGRD

Grand Rapids MD: Margot Smith

Table with 3 columns: Rank, Song Title, and TW/LW values for WGRD Grand Rapids.

KNRK

Portland, OR PD/MD: Mark Hamilton

Table with 3 columns: Rank, Song Title, and TW/LW values for KNRK Portland.

KENZ

Salt Lake City PD: Bruce Jones MD: Dom Casual

Table with 3 columns: Rank, Song Title, and TW/LW values for KENZ Salt Lake City.

KXKR

Salt Lake City PD: Mike Summers MD: Sean Ziebarth

Table with 3 columns: Rank, Song Title, and TW/LW values for KXKR Salt Lake City.

WPBZ

West Palm Beach PD: John O'Connell MD: Robert English

Table with 3 columns: Rank, Song Title, and TW/LW values for WPBZ West Palm Beach.

WAQZ

Cincinnati PD/MD: Matt Harris APD: Sterling Schiessler

Table with 3 columns: Rank, Song Title, and TW/LW values for WAQZ Cincinnati.

WROX

Norfolk PD: Perry Stone MD: Al Mitchell

Table with 3 columns: Rank, Song Title, and TW/LW values for WROX Norfolk.

KTCL

Denver PD: John Hayes

Table with 3 columns: Rank, Song Title, and TW/LW values for KTCL Denver.

KXTE

Las Vegas PD: Mike Stern MD: Chris Ripley

Table with 3 columns: Rank, Song Title, and TW/LW values for KXTE Las Vegas.

KNRX

Oklahoma City PD: Mike McCoy MD: Geno Pearson

Table with 3 columns: Rank, Song Title, and TW/LW values for KNRX Oklahoma City.



Moloko "Fun For Me"

The new single. Produced by Moloko.

The new album which asks the musical question: Do You Like My Tight Sweater?

Management: Graham Peacock and Tom Atencio www.wbr.com/radio



©1997 Warner Bros. Inc. Come on baby, do the Moloko-motion!

Early believers:

- List of radio stations: KROQ, KDGE, WHFS, XHRM, WRLG, WFNX, KTCL, KHTY, KROX, WTGZ, WBER.



120 MINUTES

AIRPLAY
Monitor

BDS IMPACT

DETECTIONS



*** AIRPOWER ***

(Minimum 1,100 detections for the first time)

Total Plays/Gain

THE MIGHTY MIGHTY BOSSTONES 1141/150

The Rascal King (Big Rig/Mercury)

Total Stations: 64/Chart Move: 26-18

Heavy (30+ plays): 9 CIMX, KEGE, KXRK, WBCN, WBRU, WBTZ, WDGE, WEQX, WPBZ

Medium (15-29): 35 CFNY, KCCX, KEDJ, KFMA, KFTE, KGDE, KICT, KITS, KJEE, KKND, KLZR, KNRK, KNRX, KPNT, KROQ, KTCL, KTEG, KWOD, KXTE, WCYY, WEDG, WENZ, WFNX, WGRD, WHFS, WKRL, WNNX, WPLY, WQBK, WQXA, WRLG, WRXQ, WXEG, XHRM, XTRA

Light (Under 15): 20

New Airplay This Week: 2 KITS, KJEE

Medium (15-29): 25 CFNY, KCCX, KHYY, KICT, KITS, KJEE, KLZR, KNRX, KROQ, KXRK, WBCN, WBTZ, WBZU, WCYY, WEDG, WENZ, WEQX, WHFS, WKXQ, WMRQ, WPLA, WPLY, WRLG, WRXQ, WXEG, XHRM
Light (Under 15): 32
New Airplay This Week: 4 KKDM, KLZR, WPBZ, XHRM

AIRPOWER BOUND

Total Plays/Gain

PRODIGY 1099/23

Breathe (XL Mute/Maverick/Warner Bros.)

Total Stations: 71/Chart Move: 21-19

Heavy (30+ plays): 4 KEDJ, KLZR, WBCN, WCYY

Medium (15-29): 34 CIMX, KCCX, KCHZ, KEDG, KEGE, KFMA, KFTE, KJEE, KKDM, KNDD, KNRK, KNRX, KPOI, KROQ, KROX, KTCL, KTOZ, KXRK, KXTE, WBTZ, WBZU, WENZ, WEQX, WHFS, WKQX, WKRL, WMRQ, WPBZ, WNVW, WPLA, WQBK, WROX, WXZZ, XHRM

Light (Under 15): 33

GOO GOO DOLLS 1090/25

Lazy Eye (Warner Sunset/Warner Bros.)

Total Stations: 66/Chart Move: 22-20

Heavy (30+): 6 KEDG, KEGE, KJEE, WCYY, WEDG, WQBK

Medium (15-29): 35 CFNY, KCCX, KFMA, KFTE, KGDE, KICT, KKND, KNDD, KNRK, KNRX, KTCL, KTEG, KTOZ, KXTE, WBCN, WBRU, WBTZ, WBZU, WDGE, WENZ, WEQX, WGRD, WKRL, WMRQ, WPBZ, WPLY, WQXA, WROX, WRXQ, WRXR, WXEG, WXNR

Light (Under 15): 25

THIRD EYE BLIND 992/105

Graduate (Elektra/EEG)

Total Stations: 66/Chart Move: 27-23

Heavy (30+): 5 KMYZ, KTOZ, KXRK, KXTE, WHFS

Medium (15-29): 29 KCCX, KEGE, KEDJ, KFMA, KFTE, KGDE, KHYY, KITS, KJEE, KLZR, KNDD, KNRK, KNRX, KOME, KPNT, KROQ, KROX, KTCL, KWOD, WBRU, WENZ, WGRD, WKQX, WKRL, WQBK, WQXA, WRXR, WXRK, XHRM

Light (Under 15): 32

New Airplay This Week: 2 WMRQ, WRXQ

OUR LADY PEACE 991/107

Superman's Dead (Columbia)

Total Stations: 55/Chart Move: 28-24

Heavy (30+): 7 CIMX, KEDG, KKND, KNRX, KTOZ, WBZU, WNVW

Medium (15-29): 28 KDGE, KEDJ, KFTE, KGDE, KJEE, KMYZ, KNRK, KPNT, KROX, KTCL, WBCN, WBRU, WBTZ, WCYY, WEDG, WENZ, WEQX, WGRD, WKRL, WNNX, WPBZ, WPLA, WQBK, WQXA, WROX, WRXR, WXNR, WXRK

Light (Under 15): 20

New Airplay This Week: 3 KDGE, KICT, WRXQ

THE VERVE PIPE 817/72

Villains (RCA)

Total Stations: 62/Chart Move: 31-29

Heavy (30+): 0

Medium (15-29): 25 KCXX, KFMA, KFTE, KICT, KJEE, KKND, KLZR, KNDD, KNRX, KPOI, KXRK, WBCN, WBZU, WCYY, WEQX, WGRD, WKQX, WLUM, WNNX, WPBZ, WRLG, WRXR, WRXZ, WDXD, WXZZ

Light (Under 15): 37

New Airplay This Week: 6 CFNY, KDGE, KTEG, WROX, WWCD, WXNR

FILTER AND THE CRYSTAL METHOD 798/44

(Can't You) Trip Like I Do (Immortal/Epic)

Total Stations: 68/Chart Move: 30-30

Heavy (30+): 0

Medium (15-29): 22 CIMX, KEDG, KEDJ, KEGE, KJEE, KLZR, KNRX, KROX, KTOZ, KXRK, KXTE, WBTZ, WBZU, WCYY, WEND, WENZ, WKRL, WNVW, WRLG, WRXQ, WXRK, WXZZ

Light (Under 15): 46

New Airplay This Week: 4 KCCX, WEDG, WMRQ, WXZZ

RADIOHEAD 728/59

Let Down (Capitol)

Total Stations: 58/Chart Move: 36-31

Heavy (30+): 1 CIMX

BUCK-O-NINE 672/-12

My Town (TVT)

Total Stations: 46/Chart Move: 35-32

Heavy (30+): 3 KHYY, KJEE, WPBZ

Medium (15-29): 18 KFTE, KGDE, KICT, KLZR, KNRX, KOME, KPOI, KROQ, KTCL, KTEG, KWOD, KXRK, KXTE, WEDG, WENZ, WXEG, WXRK

Light (Under 15): 25

New Airplay This Week: 1 WXEG

THE DANDY WARHOLS 661/40

Not If You Were The Last Junkie On Earth (Tim Kerr/Capitol)

Total Stations: 49/Chart Move: 37-33

Heavy (30+): 2 WBTZ, WMRQ

Medium (15-29): 19 KEDJ, KEGE, KFMA, KFTE, KICT, KKND, KLZR, KNDD, KXRK, WBCN, WBRU, WBZU, WCYY, WENZ, WKQX, WNNX, WRLG, WROX, XTRA

Light (Under 15): 28

New Airplay This Week: 2 CFNY, WRXQ

FOREST FOR THE TREES 648/200

Dream (DreamWorks/Geffen)

Total Stations: 52/Chart Move: Debut 35

Heavy (30+): 3 KEGE, KWOD, WBZU

Medium (15-29): 17 KDGE, KEDG, KITS, KJEE, KOME, KROQ, KTCL, KTEG, KXRK, WENZ, WHFS, WKDF, WNNX, WRLG, WXEG, WXZZ, XHRM

Light (Under 15): 32

New Airplay This Week: 13 CFNY, KCCX, KENZ, KFTE, KNRK, KNRX, KTEG, WBZU, WEQX, WNVW, WPLT, WPLY, WRLG

BLUES TRAVELER 604/108

Most Precarious (A&M)

Total Stations: 37/Chart Move: Debut 38

Heavy (30+): 1 WRLG

Medium (15-29): 21 KAEP, KCXX, KKDM, KNRK, KPOI, KTEG, KTOZ, KXPK, WBCN, WBZU, WDGE, WEQX, WGRD, WNNX, WPLT, WPLY, WQXA, WRXQ, WRXR, WXEG, WXNR

Light (Under 15): 15

New Airplay This Week: 8 CFNY, KCHZ, KLYY, KNRX, KWOD, WENZ, WRXQ, WXNR

COUNTING CROWS 575/129

Have You Seen Me Lately? (DGC/Geffen)

Total Stations: 38/Chart Move: Debut 39

Heavy (30+): 1 KXRK

Medium (15-29): 18 KENZ, KFMA, KFTE, KICT, KNRK, KROX, KTEG, WENZ, WEQX, WKDF, WNNX, WPLY, WQBK, WQXA, WRXR, WDXD, WXEG, WXNR

Light (Under 15): 19

New Airplay This Week: 8 KNRX, KTOZ, KXPK, WBRU, WGRD, WRXQ, WXRK, WXEG

CHART BOUND

Total Plays/Gain

311 539/309

Prisoner (Capricorn/Mercury)

Total Stations: 64

Heavy (30+): 0

Medium (15-29): 16 KCXX, KFMA, KKDM, KLZR, KOME, KROQ, KTCL, KXRK, KXTE, WHFS, WNNX, WNVW, WPLY, WRLG, WXRK, XTRA

Light (Under 15): 48

New Airplay This Week: 19 KCCX, KCXX, KEDJ, KENZ, KFMA, KGDE, KICT, KITS, KMYZ, KPNT, KPOI, KROX, KTCL, WBTZ, WEDG, WNVW, WPLY, WRLG, XHRM

SISTER HAZEL 468/34

All For You (Universal)

Total Stations: 20

Heavy (30+): 8 KKDM, WGRD, WKDF, WLUM, WPLT, WRXR, WXNR, WXZZ

Medium (15-29): 6 KAEP, KCHZ, KENZ, KROX, WLIR, WPLY

Light (Under 15): 6

New Airplay This Week: 1 KXPK

THE DAMBUILDERS 467/-9

Burn This Bridge (EastWest/EEG)

Total Stations: 52

Heavy (30+): 1 KXRK

Medium (15-29): 10 KFTE, KICT, WBCN, WBTZ, WBZU, WENZ, WKRL, WRLG, WXEG, XHRM

Light (Under 15): 41

New Airplay This Week: 3 KNRK, WEDG, WQXA

REEF 458/-2

Place Your Hands (Epic)

Total Stations: 29

Heavy (30+): 1 WENZ

Medium (15-29): 16 KDGE, KKDM, KLYY, KMYZ, KNRX, KPNT, WBZU, WEDG, WKRL, WPLY, WQBK, WQXA, WRXQ, WRXZ, WDXD, WXRK

Light (Under 15): 12

New Airplay This Week: 2 KPNT, WDGE

THE SUNDAYS 455/170

Summertime (DGC/Geffen)

Total Stations: 43

Heavy (30+): 1 KITS

Medium (15-29): 16 CIMX, KLYY, KNDD, KNRK, KROQ, KTEG, KXRK, WBRU, WBZU, WEDG, WENZ, WHFS, WNNX, WPLY, WRLG, XHRM

Light (Under 15): 26

New Airplay This Week: 8 CIMX, KNRK, KTEG, WEDG, WFNX, WGRD, WQXA, XTRA

★ **TALK SHOW 423/373**

Hello Hello (Atlantic)

Total Stations: 58

Heavy (30+): 0

Medium (15-29): 9 KEGE, KKND, KMYZ, KXTE, WBCN, WBZU, WDGE, WRXR, WXRK

Light (Under 15): 49

New Airplay This Week: 25 CFNY, KCCX, KEDG, KEDJ, KEGE, KICT, KLZR, KMYZ, KNDD, KOME, KTEG, KXTE, WBRU, WBTZ, WBZU, WDGE, WHFS, WNNX, WNVW, WQXA, WRLG, WROX, WRXQ, WRXR, WXNR

DEPECHE MODE 411/138

Useless (Mute/Reprise)

Total Stations: 46

Heavy (30+): 0

Medium (15-29): 14 KENZ, KFTE, KJEE, KLYY, KLZR, KROQ, KROX, KTCL, KTEG, KWOD, WBRU, WQBK, WXZZ, XTRA

Light (Under 15): 32

New Airplay This Week: 9 KPOI, KTEG, WBZU, WCYY, WEQX, WKRL, WQBK, WXZZ, XHRM

BEN HARPER 375/48

Faded (Virgin)

Total Stations: 33

Heavy (30+): 0

Medium (15-29): 10 KCXX, KFTE, KITS, KNRK, KOME, KTCL, WBTZ, WHFS, WNNX, XHRM

Light (Under 15): 23

New Airplay This Week: 4 KZON, WENZ, WRLG, WROX

CATHERINE WHEEL 349/53

Delicious (Mercury)

Total Stations: 46

Heavy (30+): 2 KEGE, KXRK

Medium (15-29): 6 CFNY, KITS, KKND, KNRK, WBRU, XTRA

Light (Under 15): 38

New Airplay This Week: 4 KNRX, KOME, KXTE, XHRM

LOVE SPIT LOVE 332/149

Long Long Time (Maverick/Warner Bros.)

Total Stations: 47

Heavy (30+): 0

Medium (15-29): 7 KEDG, KICT, KNDD, KTEG, WBZU, WKRL, XHRM

Light (Under 15): 40

New Airplay This Week: 15 KDGE, KFRR, KJEE, KNRX, KROX, KTEG, KXPK, WBCN, WENZ, WEQX, WKRL, WLIR, WPLA, WQBK, WWCD

SUBLIME 316/72

Doin' Time (Gasoline Alley/MCA)

Total Stations: 23

Heavy (30+): 6 KITS, KJEE, KLYY, KOME, WHFS, XTRA

Medium (15-29): 3 KCXX, KROQ, WXRK

Light (Under 15): 14

New Airplay This Week: 4 KCXX, KXTE, WNNX, XHRM

SEVEN MARY THREE 295/42

Lucky (Mammoth/Antilope)

Total Stations: 22

Heavy (30+): 0

Medium (15-29): 12 KDGE, KFTE, KKND, KMYZ, KNRX, KROX, KTCL, WEND, WEQX, WLUM, WPBZ, WRXQ

Light (Under 15): 10

New Airplay This Week: 5 KPOI, WENZ, WPBZ, WPLA, WQXA

MOST NEW STATIONS

No. Of Stations

TALK SHOW 25

Hello Hello (Atlantic)

311 19

Prisoner (Capricorn/Mercury)

LOVE SPIT LOVE 15

Long Long Time (Maverick/Warner Bros.)

FOREST FOR THE TREES 13

Dream (DreamWorks/Geffen)

DEPECHE MODE 9

Useless (Mute/Reprise)

TOOL 246/-4

Aenema (Zoo/Volcano)

Total Stations: 24

Heavy (30+): 1 KXTE

Medium (15-29): 2 KJEE, WXRK

Light (Under 15): 21

New Airplay This Week: 1 CFNY

JAMIROQUAI 242/18

Alright (Work)

Total Stations: 24

Heavy (30+): 1 KJEE

Medium (15-29): 8 KHYY, KNDD, KPOI, KWOD, KXRK, WBRU, WBTZ, XHRM

Light (Under 15): 15

SQUIRREL NUT ZIPPERS 238/35

Put A Lid On It (Mammoth)

Total Stations: 26

Heavy (30+): 1 XTRA

For Week Ending August 17, 1997

Detailed song tracking information for the last 3 weeks for all songs showing increased play this week. Total plays and gain do not include video play. Markets listed in order of population.

311 Total Plays/Gain 539/309 PRISONER (Capricorn/Mercury) Total Stations: 64

FIONA APPLE 1530/213 Criminal (Clean Slate/Work) Total Stations: 71

ARTIFICIAL JOY CLUB 1163/20 Sick & Beautiful (Interscope) Total Stations: 66

BECK 1264/129 Jack-Ass (DGC/Geffen) Total Stations: 70

BLUES TRAVELER 604/108 Most Precarious (A&M) Total Stations: 37

CATHERINE WHEEL 349/53 Delicious (Mercury) Total Stations: 46

COUNTING CROWS 575/129 Have You Seen Me Lately? (DGC/Geffen) Total Stations: 38

THE DANDY WARHOLS 661/40 Not If You Were The Last Junkie On Earth (Tim Kerr/Capitol) Total Stations: 49

DEPECHE MODE 411/138 Useless (Mute/Reprise) Total Stations: 46

FILTER AND THE CRYSTAL METHOD 798/44 (Can't You) Trip Like I Do (Immortal/Epic) Total Stations: 68

FOO FIGHTERS 1592/145 Everlong (Roswell/Capitol) Total Stations: 71

FOREST FOR THE TREES 648/200 Dream (DreamWorks/Geffen) Total Stations: 52

GOO GOO DOLLS 1096/25 Lazy Eye (Warner Sunset/Warner Bros.) Total Stations: 66

BEN HINER 375/48 Faded (Virgin) Total Stations: 33

LOVE SPIT LOVE 332/149 Long Long Time (Maverick/Warner Bros.) Total Stations: 47

SONG ACTIVITY REPORTS

For Week Ending August 17, 1997



Detailed song tracking information for the last 3 weeks for all songs showing increased play this week. Total plays and gain do not include video play. Markets listed in order of population.

Grid of song activity reports for artists: SARAH McLACHLAN, THE MIGHTY MIGHTY BOSSTONES, OUR LADY PEACE, PRODIGY, RADIOHEAD. Each entry includes station, chart move, and week data.

Grid of song activity reports for artists: REEL BIG FISH, SISTER HAZEL, SMASH MOUTH, SUBLIME, SUBLIME. Each entry includes station, chart move, and week data.

Grid of song activity reports for artists: SUGAR RAY, THE SUNDAYS, TALK SHOW, THIRD EYE BLIND, THE VERVE PIPE. Each entry includes station, chart move, and week data.

POWER PLAYLISTS

WXRT
Chicago
VP/Programming: Norm Winer
MD: Patty Martin

	TW	LW	
1 Sarah McLachlan, Building A Mystery	11	12	
2 Sneaker Pimps, 6 Underground	11	2	
3 Collective Soul, Listen	11	10	
4 Del Amitri, Not Where It's At	10	11	
5 Love Spit Love, Long Long Time	10	7	
6 Live, Merica	10	8	
7 Matchbox 20, Push	10	12	
8 The Sundays, SummerTime	10	6	
9 Widespread Panic, Hope In A Hopeless World	10	6	
10 Son Volt, Caryelid Easy	10	9	
11 David Byrne, Miss America	10	9	
12 Beth Orton, She Cries Your Name	10	9	
13 Abra Moore, Four Leaf Clover	9	10	
14 The Pretenders, Goodbye	9	7	
15 The Wallflowers, The Difference	9	11	
16 The Cincas, We Want Everything	9	9	
17 Genesis, Congo	9	13	
18 Ben Harper, Faded	9	6	
19 Michael Penn, Try	9	7	
20 Sheryl Crow, A Change Would Do You Good	8	6	
21 Freddy Jones Band, Wonder	8	0	
22 Del Amitri, Not Where It's Better	8	7	
23 John Fogerty, Blueboy	8	7	
24 Collective Soul, Link	8	7	
25 The Jayhawks, Big Star	8	8	
26 Big Head Todd & The Monsters, Please Don't	8	8	
27 Ziggy Marley & The Melody Makers, People	7	9	
28 Phish, Free	7	5	
29 INXS, I'm Just a Man	7	9	
30 Blues Traveler, Most Precarious	7	9	

KFOG
San Francisco
PD: Paul Marszalek
MD: Bill Evans

	TW	LW	
1 Abra Moore, Four Leaf Clover	21	24	
2 The Bonestones, Cold Sweat	21	22	
3 Oz, Last Night On Earth	21	21	
4 Toad The Wet Sprocket, Whatever I Fear	20	13	
5 The Pretenders, Goodbye	17	22	
6 Sarah McLachlan, Building A Mystery	16	22	
7 Blues Traveler, Most Precarious	15	7	
8 Freddy Jones Band, Wonder	14	0	
9 John Fogerty, Walking In A Hurricane	13	13	
10 John Fogerty, Blueboy	13	14	
11 Paul McCartney, The World Tonight	12	14	
12 Paul McCartney, Young Boy	12	12	
13 Dave Matthews Band, Tripping Billies	12	21	
14 Blues Traveler, Carolina Blues	10	17	
15 The Wallflowers, The Difference	10	20	
16 Indigo Girls, Shame On You	7	5	
17 Jonny Lang, Hit The Ground Running	7	10	
18 John Hiatt, Little Head	7	10	
19 Indigo Girls, Get Out The Map	7	7	
20 Sheryl Crow, Get Out Of This House	7	7	
21 Widespread Panic, Aunt Avis	7	9	
22 Savin Ray Vaughn & Double, Scuttle	7	9	
23 Dave Matthews Band, Crash Into Me	6	3	
24 Big Head Todd & The Monsters, Please Don't	6	5	
25 Jonny Lang, Lie To Me	6	5	
26 Fleetwood Mac, Silver Springs	6	3	
27 Big Blue Hearts, Nobody Wants Her	6	8	
28 World Party, It's Time	5	2	
29 Hufamoose, Wait	5	2	
30 Live, Turn My Head	4	6	

WBOS
Boston
PD: Jim Herron
MD: Cliff Nash

	TW	LW	
1 Sneaker Pimps, 6 Underground	46	38	
2 The Verve Pipe, The Freshmen	45	47	
3 Sister Hazel, All For You	45	43	
4 Sarah McLachlan, Building A Mystery	45	45	
5 Third Eye Blind, Semi-Charmed Life	43	43	
6 Matchbox 20, Push	42	46	
7 Shawn Colvin, Sunny Came Home	41	44	
8 Fleetwood Mac, Silver Springs	35	21	
9 Hootie & The Blowfish, Only Wanna Be With Tonic, If You Could Only See	25	21	
10 Tonic, If You Could Only See	24	21	
11 Dave Matthews Band, Tripping Billies	23	20	
12 Paula Cole, I Don't Want To Wait	23	16	
13 Blues Traveler, Most Precarious	23	23	
14 Fiona Apple, Criminal	23	24	
15 Edwin McCain, See The Sky Again	23	24	
16 Live, Turn My Head	23	24	
17 The Wallflowers, One Headlight	23	26	
18 Indigo Girls, Shame On You	22	22	
19 Teenage Fanclub, Take The Long Way Round	22	19	
20 Hootie & The Blowfish, Live	21	23	
21 Counting Crows, A Long December	21	24	
22 Collective Soul, Listen	21	28	
23 No Doubt, Don't Speak	21	19	
24 Jewel, You Were Meant For Me	19	20	
25 Bruce Springsteen, Secret Garden	19	21	
26 The Wallflowers, The Difference	17	18	
27 Alanis Morissette, You Learn	17	15	
28 The Cranberries, Free To Decide	16	21	
29 Collective Soul, December	14	12	
30 Oishwalia, Counting Blue Cars	14	15	

KTCZ
Minneapolis
PD: Lauren MacLeash
MD: Jane Fredericksen

	TW	LW	
1 John Fogerty, Blueboy	21	23	
2 The Wallflowers, The Difference	21	22	
3 Sister Hazel, All For You	21	21	
4 Sarah McLachlan, Building A Mystery	20	20	
5 Blues Traveler, Carolina Blues	20	21	
6 Jonny Lang, Hit The Ground Running	20	23	
7 Paul McCartney, The World Tonight	17	22	
8 Edwin McCain, See The Sky Again	11	10	
9 Corey Stevens, One More Time	11	9	
10 Matchbox 20, Push	10	12	
11 Boz Scaggs, It All Went Down The Drain	10	13	
12 Toad The Wet Sprocket, Whatever I Fear	9	11	
13 Sheryl Crow, A Change Would Do You Good	9	8	
14 World Party, Call Me Up	9	8	
15 Indigo Girls, Shame On You	9	8	
16 Abra Moore, Four Leaf Clover	8	7	
17 Blues Traveler, Most Precarious	8	7	
18 Dave Matthews Band, Tripping Billies	8	7	
19 Shawn Colvin, Sunny Came Home	7	6	
20 Fleetwood Mac, Silver Springs	7	6	
21 Hufamoose, Wait	7	10	
22 Widespread Panic, Aunt Avis	7	7	
23 Fiona Apple, Criminal	6	6	
24 Freddy Johnston, Bad Reputation	6	5	
25 Bob Dylan, Tangled Up In Blue	6	4	
26 David & David, Welcome To The Boomtown	6	6	
27 Peter Gabriel, Sledgehammer	6	1	
28 Talking Heads, Take Me To The River	6	5	
29 Freddy Jones Band, Wonder	6	0	
30 Goo Goo Dolls, Name	6	4	

WHPT
Tampa
PD: Chuck Beck
APD/MD: Chris Taylor

	TW	LW	
1 Dave Matthews Band, Crash Into Me	33	32	
2 Sister Hazel, All For You	32	33	
3 Mighty Mighty Bosstones, The Impression	30	25	
4 10,000 Maniacs, More Than This	28	22	
5 Sarah McLachlan, Building A Mystery	26	21	
6 Third Eye Blind, Semi-Charmed Life	25	30	
7 John Fogerty, Blueboy	24	15	
8 Indigo Girls, Shame On You	23	24	
9 Ziggy Marley & The Melody Makers, People	23	6	
10 Matchbox 20, Push	22	13	
11 The Wallflowers, The Difference	21	21	
12 Dave Matthews Band, Tripping Billies	19	18	
13 Paula Cole, I Don't Want To Wait	19	22	
14 Oasis, D'You Wanna Get Me To Lead Me On?	17	15	
15 Sugar Ray, Fly	16	15	
16 Squirrel Nut Zippers, Hell	15	13	
17 Blues Traveler, Most Precarious	14	13	
18 Fiona Apple, Criminal	14	15	
19 Jewel, Fools' Games	13	0	
20 Smash Mouth, Walkin' On The Sun	13	0	
21 The Pretenders, Goodbye	12	12	
22 The Sundays, SummerTime	12	0	
23 Matchbox 20, J AM	12	0	
24 Toad The Wet Sprocket, Whatever I Fear	11	0	
25 Sheryl Crow, A Change Would Do You Good	11	30	
26 The Why Store, Father	10	8	
27 Jewel, Foolish Games	10	16	
28 Leah Anderson, Mother Tongue	6	11	
29 Tracy Chapman, Smoke And Ashes	6	24	
30 Indigo Girls, Shame On You	9	28	

WVRV
St. Louis
PD: Scott Strong
MD: Mike Richter

	TW	LW	
1 Third Eye Blind, Semi-Charmed Life	41	37	
2 Sister Hazel, All For You	40	42	
3 Matchbox 20, Push	38	42	
4 Shawn Colvin, Sunny Came Home	37	40	
5 Tonic, If You Could Only See	36	37	
6 Sarah McLachlan, Building A Mystery	34	32	
7 Edwyn McCain, See The Sky Again	33	23	
8 Dog's Eye View, Homecoming Parade	29	23	
9 Teenage Fanclub, Take The Long Way Round	28	28	
10 INXS, Don't Lose Your Mind	27	27	
11 Live, Turn My Head	26	22	
12 10,000 Maniacs, More Than This	26	25	
13 Hufamoose, Wait	25	22	
14 Musco Tit, I Want You	25	22	
15 Blues Traveler, Most Precarious	24	21	
16 The Wallflowers, The Difference	23	24	
17 Fiona Apple, Criminal	23	23	
18 Jewel, Fools' Games	22	1	
19 Sheryl Crow, A Change Would Do You Good	17	18	
20 Chain Farm, Lie On Lie	15	10	
21 Better Than Ezra, Desperately Wanting	13	14	
22 Dave Matthews Band, Crash Into Me	12	16	
23 Hootie & The Blowfish, Go Blind	12	10	
24 John Mellencamp, Hey West Intermzzo	11	12	
25 Duncan Sheik, Barely Breathing	11	13	
26 The Wallflowers, One Headlight	11	9	
27 Oishwalia, Counting Blue Cars	11	12	
28 John Mellencamp, Just Another Day	10	10	
29 No Doubt, Don't Speak	10	12	
30 INXS, Elegantly Wasted	10	9	

KBCO
Denver
PD: Dave Benson
MD: Scott Arwh

	TW	LW	
1 Van Morrison, Burning Ground	24	23	
2 Big Head Todd & The Monsters, Please Don't	24	26	
3 Sarah McLachlan, Building A Mystery	24	24	
4 The Wallflowers, Three Marlenas	23	24	
5 Abra Moore, Four Leaf Clover	21	23	
6 Sister Hazel, All For You	20	14	
7 Sheryl Crow, A Change Would Do You Good	18	24	
8 Fiona Apple, Criminal	15	13	
9 Squirrel Nut Zippers, Hell	15	13	
10 John Mellencamp, Just Another Day	13	10	
11 Fool's Progress, Think About It	13	12	
12 Third Eye Blind, Semi-Charmed Life	13	13	
13 Matchbox 20, Push	13	16	
14 Dave Matthews Band, Crash Into Me	13	10	
15 T.O.F., Rap Stop	13	15	
16 Indigo Girls, Get Out The Map	12	15	
17 John Fogerty, Blueboy	12	12	
18 Ziggy Marley & The Melody Makers, People	12	13	
19 The Verve Pipe, The Freshmen	12	12	
20 Blues Traveler, Most Precarious	12	16	
21 Paula Cole, I Don't Want To Wait	12	13	
22 Eric Johnson, S.R.V.	11	11	
23 OMC, How Bizarre	11	13	
24 Shawn Colvin, Sunny Came Home	11	12	
25 Brad, The Day Brings	11	9	
26 Finn Brothers, Only Talking Sense	10	10	
27 Baranaked Ladies, The Old Apartment	10	13	
28 Jonny Lang, Lie To Me	10	15	
29 William Topley, The Ring	10	11	
30 Tonic, If You Could Only See	10	11	

KMTT
Seattle
SM: Chris Mays
MD: Dean Carlson

	TW	LW	
1 Indigo Girls, Get Out The Map	21	14	
2 Boz Scaggs, It All Went Down The Drain	21	19	
3 The Wallflowers, Three Marlenas	20	20	
4 Sarah McLachlan, Building A Mystery	20	18	
5 Paula Cole, I Don't Want To Wait	19	20	
6 Blues Traveler, Carolina Blues	19	20	
7 John Fogerty, Blueboy	16	20	
8 Matchbox 20, Push	13	9	
9 Brad, The Day Brings	10	7	
10 Ben Harper, Billy & Consequence	10	9	
11 Abra Moore, Four Leaf Clover	10	10	
12 Dog's Eye View, Homecoming Parade	9	6	
13 Counting Crows, Daylight Fading	9	11	
14 Dave Matthews Band, Tripping Billies	9	9	
15 World Party, Call Me Up	9	8	
16 Shawn Colvin, You And The Mona Lisa	9	10	
17 Hufamoose, Wait	8	11	
18 Beth Orton, She Cries Your Name	8	10	
19 Big Blue Hearts, Nobody Wants Her	7	4	
20 Whiskeytown, 16 Days	7	7	
21 Natalie Merchant, Wonder	6	5	
22 Sheryl Crow, A Change Would Do You Good	6	8	
23 Fiona Apple, Criminal	6	8	
24 John Mellencamp, Just Another Day	5	5	
25 Oionna Farris, I Know	5	5	
26 John Mellencamp, Key West Intermzzo	5	5	
27 Leo Kottke, World Turning	5	2	
28 Sugar Ray, Fly	5	3	
29 Jonny Lang, Lie To Me	5	3	
30 Shawn Colvin, Get Out Of This House	5	5	

CIDR
Detroit
PD: Murray Brookshaw
MD: Ann Delisi

	TW	LW	
1 Sarah McLachlan, Building A Mystery	30	30	
2 Sheryl Crow, A Change Would Do You Good	30	31	
3 John Fogerty, Blueboy	30	31	
4 Fiona Apple, Criminal	30	27	
5 Hufamoose, Wait	27	27	
6 Fleetwood Mac, Silver Springs	24	22	
7 Dave Matthews Band, Tripping Billies	21	25	
8 Counting Crows, Have You Seen Me Lately?	21	22	
9 Ben Harper, Faded	20	19	
10 Sherr Jackson, Maple Tree	20	22	
11 Widespread Panic, Aunt Avis	19	4	
12 Toad The Wet Sprocket, Home Down	16	30	
13 Edwin McCain, See The Sky Again	15	11	
14 Shawn Colvin, Sunny Came Home	15	13	
15 Blues Traveler, Most Precarious	14	17	
16 Ben Harper, Faded	14	13	
17 Big Head Todd & The Monsters, Please Don't	14	14	
18 k.d.ling, The Joker	13	7	
19 Duncan Sheik, Barely Breathing	13	12	
20 Patty Griffin, Let Him Fly	13	7	
21 The Wallflowers, One Headlight	13	12	
22 Paula Cole, Where Have All The Cowboys	13	13	
23 Jewel, You Were Meant For Me	12	12	
24 The Pretenders, Goodbye	12	12	
25 Fiona Apple, Sleep To Dream	12	13	
26 The Wallflowers, The Difference	12	10	
27 John Hiatt, Little Head	12	14	
28 Counting Crows, A Long December	12	11	
29 John Mellencamp, Just Another Day	12	10	
30 Indigo Girls, Shame On You	11	12	

KKZN
Dallas
PD: Amy Doyle
APD: Spike

	TW	LW	
1 Fiona Apple, Criminal	25	24	
2 Sheryl Crow, A Change Would Do You Good	24	23	
3 Sarah McLachlan, Building A Mystery	24	20	
4 Matchbox 20, Push	24	25	
5 Baranaked Ladies, The Old Apartment	23	24	
6 John Fogerty, Blueboy	22	25	
7 Third Eye Blind, Semi-Charmed Life	21	25	
8 Dave Matthews Band, Tripping Billies	20	18	
9 The Wallflowers, The Difference	17	8	
10 Jonny Lang, Hit The Ground Running	15	13	
11 Abra Moore, Four Leaf Clover	14	12	
12 Fleetwood Mac, Silver Springs	14	17	
13 David Byrne, Miss America	14	12	
14 Paula Cole, I Don't Want To Wait	13	10	
15 Ben Harper, Faded	13	10	
16 Jackpierce, Vineyard	12	12	
17 Toad The Wet Sprocket, Whatever I Fear	12	11	
18 Hufamoose, Wait	12	11	
19 Shawn Colvin, You And The Mona Lisa	11	8	
20 Blues Traveler, Most Precarious	11	7	
21 Big Blue Hearts, Nobody Wants Her	11	11	
22 Live, Turn My Head	11	3	
23 James McMurtry, For All I Know	11	9	
24 Fool's Progress, Think About It	10	10	
25 Counting Crows, Daylight Fading	10	22	
26 Dog's Eye View, Homecoming Parade	10	11	
27 Big Head Todd & The Monsters, Please Don't	10	7	
28 Chantal Kreviazuk, Surrounded	9	13	
29 Blues Traveler, Carolina Blues	8	7	
30 John Mellencamp, Just Another Day	8	2	

For Week Ending August 17, 1997

COMBINED ROCK MONITOR AIRPLAY										AIRPLAY THIS WEEK BY FORMAT									
TW	LW	WKS	TITLE (LABEL/PROMOTION LABEL)	ARTIST	THIS WEEK			LAST WEEK			MAINSTREAM			MODERN			TRIPLE-A		
					Audience (millions)	Detections No.	Rank	Audience (millions)	Detections No.	Rank	Audience (millions)	Detections No.	Rank	Audience (millions)	Detections No.	Rank	Audience (millions)	Detections No.	Rank
1	1	21	PUSH (LAVA/ATLANTIC)	MATCHBOX 20	25.1091	3773	1	25.9477	3943	1	7.3165	1137	9	15.3141	2216	3	2.4785	420	2
2	2	10	FLY (LAVA/ATLANTIC)	SUGAR RAY	23.1263	3512	3	22.4807	3346	3	2.6761	455	30	20.0087	2920	1	0.4415	137	—
3	3	21	IF YOU COULD ONLY SEE (POLYDOR/A&M)	TONIC	22.0087	3205	4	22.0941	3339	4	9.4386	1411	2	11.2825	1549	11	1.2876	245	14
4	4	13	TURN MY HEAD (RADIOACTIVE/MCA)	LIVE	20.9741	3738	2	21.0256	3763	2	8.4129	1342	3	11.4087	2158	4	1.1525	238	16
5	7	6	WALKIN' ON THE SUN (INTERSCOPE)	SMASH MOUTH	19.0863	2812	6	17.4445	2613	8	0.9221	223	—	17.8268	2484	2	0.3374	105	—
6	6	9	BUILDING A MYSTERY (ARISTA)	SARAH MCLACHLAN	17.3143	2692	7	17.7678	2638	7	0.5929	158	—	13.2271	1967	7	3.4943	567	1
7	10	6	EVERLONG (ROSWELL/CAPITOL)	FOO FIGHTERS	16.5336	2243	10	15.2959	1998	14	4.0874	637	22	12.4332	1592	9	0.0130	14	—
8	5	17	THE DIFFERENCE (INTERSCOPE)	THE WALLFLOWERS	16.0843	2914	5	18.5904	3300	5	7.8989	1248	4	6.2383	1316	15	1.9471	350	4
9	8	7	D' YOU KNOW WHAT I MEAN? (EPIC)	OASIS	15.8742	2522	8	16.4665	2524	9	2.3624	409	36	13.2758	2052	5	0.2360	61	—
10	9	22	SEMI-CHARMED LIFE (ELEKTRA/EEG)	THIRD EYE BLIND	15.3307	2177	11	15.9840	2315	10	2.3220	322	—	11.2147	1571	10	1.7940	284	8
11	12	12	WRONG WAY (GASOLINE ALLEY/MCA)	SUBLIME	14.8161	2148	12	14.4027	2100	12	0.8505	143	—	13.9656	2005	6	—	—	—
12	13	22	THE IMPRESSION THAT I GET (BIG RIG/MERCURY)	THE MIGHTY MIGHTY BOSSTONES	14.0321	1893	16	13.9783	1920	15	2.0619	313	—	11.5085	1444	13	0.4617	136	—
13	11	15	LISTEN (ATLANTIC)	COLLECTIVE SOUL	13.6728	2492	9	15.1447	2799	6	8.6985	1485	1	4.2722	875	27	0.7021	132	—
14	14	15	6 UNDERGROUND (CLEAN UP/VIRGIN)	SNEAKER PIMPS	12.9464	1959	14	12.9326	2007	13	0.2362	38	—	11.7448	1808	8	0.9654	113	—
15	16	5	CRIMINAL (CLEAN SLATE/WORK)	FIONA APPLE	12.0941	1951	15	10.2457	1718	18	0.1201	40	—	10.3104	1530	12	1.6636	381	3
16	15	5	LAZY EYE (WARNER SUNSET/WARNER BROS.)	GOO GOO DOLLS	10.9567	2113	13	11.0131	2107	11	5.8954	1008	12	5.0346	1090	20	0.0267	15	—
17	17	27	GONE AWAY (COLUMBIA)	THE OFFSPRING	10.0728	138	20	9.9525	1414	21	6.1664	864	15	3.8974	507	—	0.0090	10	—
18	22	5	SUPERMAN'S DEAD (COLUMBIA)	OUR LADY PEACE	9.3588	1826	17	8.8947	1682	20	3.8660	834	19	5.4919	991	24	0.0009	1	—
19	32	2	TOUCH, PEEL AND STAND (OUTPOST/GEFFEN)	DAYS OF THE NEW	9.3341	1293	23	7.4531	1141	34	7.4888	1110	11	1.8444	182	—	0.0009	1	—
20	21	7	TRUST (CAPITOL)	MEGADETH	8.8942	1244	27	8.9643	1251	26	8.8942	1244	5	—	—	—	—	—	—
21	19	19	SONG 2 (FOOD/PARLOPHONE/VIRGIN)	BLUR	8.6261	1273	25	9.3306	1376	22	1.2241	228	—	7.4019	1044	21	0.0001	1	—
22	26	6	SELL OUT (MOJO/UNIVERSAL)	REEL BIG FISH	8.6122	1423	19	8.2583	1352	23	0.2353	48	—	8.3558	1357	14	0.0211	18	—
23	18	12	CAROLINA BLUES (A&M)	BLUES TRAVELER	8.5452	1527	18	9.4914	1737	17	6.3962	1127	10	1.2051	232	—	0.9439	168	—
24	20	40	ONE HEADLIGHT (INTERSCOPE)	THE WALLFLOWERS	8.3508	1155	35	9.1100	1222	30	3.1291	448	—	4.2618	566	—	0.9599	142	—
25	25	29	THE FRESHMEN (RCA)	THE VERVE PIPE	8.3083	1164	34	8.3101	1233	27	2.2926	350	—	4.8669	648	—	1.1488	166	—
26	23	8	BLEEDING ME (ELEKTRA/EEG)	METALLICA	8.2682	1205	31	8.6446	1256	25	8.0339	1138	8	0.2343	67	—	—	—	—
27	NEW		PINK (COLUMBIA)	AEROSMITH	7.5977	1192	33	5.6277	857	54	7.5977	1192	7	—	—	—	—	—	—
28	37	3	MARCHING TO MARS (THE TRACK FACTORY/MCA)	SAMMY HAGAR	7.4804	1222	28	6.5709	1125	36	7.4804	1222	6	—	—	—	—	—	—
29	35	3	JACK-ASS (DGC/GEFFEN)	BECK	7.4742	1278	24	7.0583	1147	33	0.0039	1	—	7.4572	1264	16	0.0131	13	—
30	34	3	VILLAINS (RCA)	THE VERVE PIPE	7.2613	1376	21	7.1515	1329	24	3.4265	545	24	3.8201	817	29	0.0147	14	—
31	28	30	VOLCANO GIRLS (MINTY FRESH/OUTPOST/GEFFEN)	VERUCA SALT	7.2046	951	44	8.0981	1039	39	3.6471	406	—	3.5512	581	—	0.0063	4	—
32	40	2	THE RASCAL KING (BIG RIG/MERCURY)	THE MIGHTY MIGHTY BOSSTONES	7.1727	1220	29	6.2169	1066	38	0.2401	46	—	6.9007	1141	18	0.0319	33	—
33	38	3	GRADUATE (ELEKTRA/EEG)	THIRD EYE BLIND	7.1478	1147	36	6.5477	986	43	0.7843	154	—	6.3627	992	23	0.0008	1	—
34	27	9	BATON ROUGE (MCA)	THE NIXONS	6.8990	1089	42	8.1149	1231	29	6.4912	906	13	0.4078	103	—	—	—	—
35	29	18	MONKEY WRENCH (ROSWELL/CAPITOL)	FOO FIGHTERS	6.8899	887	51	7.8894	1005	42	3.5265	449	31	3.3634	438	—	—	—	—
36	33	13	TRIPPING BILLIES (RCA)	DAVE MATTHEWS BAND	6.8868	1051	38	7.3010	1215	31	1.2140	164	—	3.8558	608	37	1.8170	289	7
37	31	37	CRASH INTO ME (RCA)	DAVE MATTHEWS BAND	6.7691	935	47	7.5490	968	45	0.5241	83	—	5.0900	664	—	1.1550	188	20
38	NEW		LIVE THROUGH THIS (FIFTEEN STORIES) (ATLANTIC)	MIGHTY JOE PLUM	6.6167	904	49	4.8219	886	51	6.3834	853	16	0.2283	49	—	0.0050	2	—
39	NEW		I CHOOSE (COLUMBIA)	THE OFFSPRING	6.4822	904	50	5.8143	827	56	5.3117	775	21	1.1705	129	—	—	—	—
40	NEW		MOST PRECARIOUS (A&M)	BLUES TRAVELER	6.2985	1017	41	5.5489	837	55	0.9868	153	—	3.4163	604	38	1.8954	260	12

Records showing an increase in audience over the previous week, regardless of chart movement. Rankings broken down by mainstream, modern and triple-A formats (on right side of this page) correspond to charts printed in this week's Monitor and therefore rankings do not exist for recurrents and records below No. 40 (No. 20 for triple-A). Audience computed by cross-referencing exact times of airplay with Arbitron listener data. ©1997, Billboard/BPI Communications.

already on:

WKLK WHMH
WNNX KFBD
WRAX WPUP
WRXR WRFX
WEGR WRCQ
WOXY WHEB
WVRK KSPI
WZAT WROQ
KZZK KZTX
WKQQ WTAO

drivin n cryin

the new single

"paid in full"

album in stores **Aug. 26th**

ichiban international
(770) 419-1414

www.drivinncryin.com

drivin n cryin

Management: David Preschel
Phone: 770-804-9080
Fax: 770-913-9788

Dance Hall Crashers



Lost Again

Early Adds: WHFS KOME KCXX

The First Single From The Upcoming Album Honey, I'm Homely

On Tour Across America Starting in September

Produced by Stoker and Dance Hall Crashers Except "Mr. Blue" Produced by Tim Palmer for World's End America, Inc. Additional Production on "Lost Again" and "All Mine" by Tim Palmer for World's End America, Inc.

Management: Elyse Rogers for Goldenvoice Management

Get AMPed: MCA Records Online: www.mcarecords.com • ©1997 MCA Records, Inc

World Radio History

MCA 510

THIS WEEK	LAST WEEK	WKS. ON CHART	TITLE/LABEL/PROMOTION LABEL	ARTIST	DETECTIONS	
					TW	LW
★★★ No. 1 ★★★						
1	1	15	LISTEN ATLANTIC	COLLECTIVE SOUL	1485	1656
5 weeks at No. 1						
2	2	21	IF YOU COULD ONLY SEE POLYDOR/A&M	TONIC	1411	1535
3	4	8	TURN MY HEAD RADIOACTIVE/MCA	LIVE	1342	1321
4	3	16	THE DIFFERENCE INTERSCOPE	THE WALLFLOWERS	1248	1433
5	6	14	TRUST CAPITOL	MEGADETH	1244	1251
6	9	4	MARCHING TO MARS THE TRACK FACTORY/MCA	SAMMY HAGAR	1222	1125
7	16	16	PINK COLUMBIA	AEROSMITH	1192	857
8	8	12	BLEEDING ME ELEKTRAVEEG	METALLICA	1138	1180
9	7	25	PUSH LAVA/ATLANTIC	MATCHBOX 20	1137	1201
10	5	12	CAROLINA BLUES A&M	BLUES TRAVELER	1127	1263
11	11	6	TOUCH, PEEL AND STAND OUTPOST/GEFFEN	DAYS OF THE NEW	1110	1025
12	12	6	LAZY EYE WARNER SUNSET/WARNER BROS	GOO GOO DOLLS	1008	1022
13	10	13	BATON ROUGE MCA	THE NIXONS	906	1091
14	14	11	LAST CUP OF SORROW SLASH/REPRISE	FAITH NO MORE	876	894
15	15	27	GONE AWAY COLUMBIA	THE OFFSPRING	864	877
16	18	6	LIVE THROUGH THIS (FIFTEEN STORIES) ATLANTIC	MIGHTY JOE PLUM	853	803
17	13	9	YOU EMI/VIRGIN	QUEENSRYCHE	851	982
★★★ AIRPOWER ★★★						
18	17	7	LOCKED & LOADED EPIC	JACKYL	842	818
★★★ AIRPOWER ★★★						
19	19	10	SUPERMAN'S DEAD COLUMBIA	OUR LADY PEACE	834	798
★★★ AIRPOWER ★★★						
20	20	7	SOUL OF LOVE VEVELE	PAUL RODGERS	825	771
21	21	5	I CHOOSE COLUMBIA	THE OFFSPRING	775	709
22	25	2	EVERLONG ROSWELL/CAPITOL	FOO FIGHTERS	637	534
23	23	3	SUGARCANE COLUMBIA	CRY OF LOVE	620	598
24	24	6	VILLAINS RCA	THE VERVE PIPE	545	573
25	26	5	AENEMA ZOO/VOLCANO	TOOL	543	532
26	22	11	WALKING IN A HURRICANE WARNER BROS	JOHN FOGERTY	538	639
27	35	2	CONGO ATLANTIC	GENESIS	513	413
28	29	2	ONE ANGEL AWARE/CAPITOL	STIR	474	449
29	30	4	PLACE YOUR HANDS EPIC	REEF	456	448
30	NEW		FLY LAVA/ATLANTIC	SUGAR RAY	455	361
31	27	17	MONKEY WRENCH ROSWELL/CAPITOL	FOO FIGHTERS	449	514
32	NEW		MY OWN PRISON WIND-UP	CREED	446	332
33	34	3	BRING IT ON CMC INTERNATIONAL	LYNYRD SKYNYRD	425	415
34	33	3	FADE TO BLUE RAZOR & TIE	38 SPECIAL	419	430
35	39	2	HIGH ROCKET/POLYDOR/A&M	JIMMIE'S CHICKEN SHACK	416	376
36	36	3	D' YOU KNOW WHAT I MEAN? EPIC	OASIS	409	410
37	NEW		HIT THE GROUND RUNNING A&M	JONNY LANG	395	356
38	31	3	TRANSISTOR CAPRICORN/MERCURY	311	386	446
39	38	25	FALLING IN LOVE (IS HARD ON THE KNEES) COLUMBIA	AEROSMITH	378	384
40	28	17	HOLE IN MY SOUL COLUMBIA	AEROSMITH	370	485

Records showing an increase in detections over the previous week, regardless of chart movement. A record which has been on either chart for more than 20 weeks will not receive a bullet, even if it registers an increase in detections. Airpower awarded to those records which attain 800 detections (mainstream) or 1,100 (modern) for the first time. If two records are tied in number of plays, the record being played on more stations is placed first. Records below the top 20 are removed from the chart after 26 weeks.

THIS WEEK	LAST WEEK	WKS. ON CHART	TITLE/LABEL/PROMOTION LABEL	ARTIST	DETECTIONS	
					TW	LW
★★★ No. 1 ★★★						
1	1	10	FLY LAVA/ATLANTIC	SUGAR RAY	2920	2875
5 weeks at No. 1						
2	2	7	WALKIN' ON THE SUN INTERSCOPE	SMASH MOUTH	2484	2325
3	3	18	PUSH LAVA/ATLANTIC	MATCHBOX 20	2216	2313
4	4	12	TURN MY HEAD RADIOACTIVE/MCA	LIVE	2158	2203
5	5	7	D' YOU KNOW WHAT I MEAN? EPIC	OASIS	2052	2062
6	6	12	WRONG WAY GASOLINE ALLEY/MCA	SUBLIME	2005	1946
7	7	9	BUILDING A MYSTERY ARISTA	SARAH MCLACHLAN	1967	1940
8	8	19	6 UNDERGROUND CLEAN UP/VIRGIN	SNEAKER PIMPS	1808	1857
9	13	5	EVERLONG ROSWELL/CAPITOL	FOO FIGHTERS	1592	1447
10	9	23	SEMI-CHARMED LIFE ELEKTRAVEEG	THIRD EYE BLIND	1571	1657
11	10	23	IF YOU COULD ONLY SEE POLYDOR/A&M	TONIC	1549	1564
12	14	6	CRIMINAL CLEAN SLATE/WORK	FIONA APPLE	1530	1317
13	12	26	THE IMPRESSION THAT I GET BIG RIG/MERCURY	THE MIGHTY MIGHTY BOSSTONES	1444	1465
14	15	15	SELL OUT MOJO/UNIVERSAL	REEL BIG FISH	1357	1294
15	11	16	THE DIFFERENCE INTERSCOPE	THE WALLFLOWERS	1316	1519
16	19	5	JACK-ASS DGC/GEFFEN	BECK	1264	1135
17	18	10	SICK & BEAUTIFUL CRUNCHY/INTERSCOPE	ARTIFICIAL JOY CLUB	1163	1143
★★★ AIRPOWER ★★★						
18	26	4	THE RASCAL KING BIG RIG/MERCURY	THE MIGHTY MIGHTY BOSSTONES	1141	991
19	21	8	BREATHE XL MUTE/MAVERICK/WARNER BROS	PRODIGY	1099	1076
20	22	6	LAZY EYE WARNER SUNSET/WARNER BROS	GOO GOO DOLLS	1090	1065
21	20	21	SONG 2 FOOD/PARLOPHONE/VIRGIN	BLUR	1044	1099
22	23	23	NOT AN ADDICT 550 MUSIC	K'S CHOICE	1000	1033
23	27	4	GRADUATE ELEKTRAVEEG	THIRD EYE BLIND	992	887
24	28	5	SUPERMAN'S DEAD COLUMBIA	OUR LADY PEACE	991	884
25	24	8	WHAT DO YOU WANT FROM ME? POLYDOR/A&M	MONACO	944	1020
26	16	9	TRANSISTOR CAPRICORN/MERCURY	311	927	1246
27	25	14	LISTEN ATLANTIC	COLLECTIVE SOUL	875	1016
28	17	10	LAST NIGHT ON EARTH ISLAND	U2	817	1174
29	31	4	VILLAINS RCA	THE VERVE PIPE	817	745
30	30	3	(CAN'T YOU) TRIP LIKE I DO IMMORTAL/EPIC	FILTER AND THE CRYSTAL METHOD	798	754
31	36	3	LET DOWN CAPITOL	RADIOHEAD	728	669
32	35	4	MY TOWN TVT	BUCK-O-NINE	672	684
33	37	3	NOT IF YOU WERE THE LAST JUNKIE ON EARTH TIM KERR/CAPITOL	THE DANDY WARHOLS	661	621
34	29	9	WIDE OPEN SPACE EPIC	MANSUN	660	866
35	NEW		DREAM DREAMWORKS/GEFFEN	FOREST FOR THE TREES	648	448
36	34	21	BITCH CAPITOL	MEREDITH BROOKS	627	687
37	32	14	TRIPPING BILLIES RCA	DAVE MATTHEWS BAND	608	713
38	NEW		MOST PRECARIOUS A&M	BLUES TRAVELER	604	496
39	NEW		HAVE YOU SEEN ME LATELY? DGC/GEFFEN	COUNTING CROWS	575	446
40	33	21	IT'S NO GOOD MUTE/REPRISE	DEPECHE MODE	568	703



COOL FOR AUGUST

"TRIALS"

The follow-up to the Top 15 song:
"Don't Wanna Be Here"
The album: GRAND WORLD

ONE OF THE MOST ADDED 2ND WEEK
IN A ROW WITH ADDS SO FAR THIS WEEK AT:

KRXQ KAZR WRAT WAFX KSEZ WIHN
KRZR WVRK WZAT WEGW KATS WTOS
KLBK WTPA WDRK KWBR KCMQ WCPR

ON OVER 60 STATIONS IN ITS 2ND WEEK!
164 DETECTIONS (+110) THIS WEEK
ON TOUR WITH THE NIXONS



Produced by: Matt Serletic Management: Ross Schwartz for Building Management ©1997 Warner Bros. Records Inc. www.wbr.com