

# ROCK AIRPLAY Monitor

• We Listen To Radio •

September 19, 1997 \$4.95 Volume 4 • No. 38

## ROCK HIGHLIGHTS

### MAINSTREAM

#1

#### AEROSMITH

*Pink* (COLUMBIA)

★ ★ ★ AIRPOWER ★ ★ ★

GREEN DAY • *Hitchin' A Ride* (REPRISE)

### GOING FOR AIRPLAY

38 SPECIAL • *Miracle Man* (RAZOR & TIE)

CLARISSA • *All But White* (MAMMOTH)

FLEETWOOD MAC • *The Chain* (REPRISE)

THE JASON BONHAM BAND • *Drown In Me* (MUJ/WORK)

MEGADETH • *Almost Honest* (CAPITOL)

SWEET VINE • *Candy For Fools* (COLUMBIA)

TONIC • *Soldier's Daughter* (POLYDOR/A&M)

U2 • *Please* (ISLAND)

VIGILANTES OF LOVE • *Locust Years* (CAPRICORN/MERCURY)

### MODERN

#1

#### SMASH MOUTH

*Walkin' On The Sun* (INTERSCOPE)

★ ★ ★ AIRPOWER ★ ★ ★

EVERCLEAR • *Everything To Everyone* (CAPITOL)

CHUMBAWAMBA • *Tubthumping* (REPUBLIC/UNIVERSAL)

THE SUNDAYS • *Summertime* (DGC/GEFFEN)

### GOING FOR AIRPLAY

BARENAKED LADIES • *Brian Wilson* (REPRISE)

BJORK • *Joga* (ELEKTRA/EEG)

IVY • *The Best Thing* (ATLANTIC)

HOLLY MCNARLAND • *Numb* (UNIVERSAL)

TAJA SEVELLE • *I And I* (550 MUSIC)

THE WANNADIES • *Might Be Stars* (RCA)

U2 • *Please* (ISLAND)

### TRIPLE-A

#1

#### SARAH MCLACHLAN

*Building A Mystery* (NETTWERK/ARISTA)

★ ★ ★ AIRPOWER ★ ★ ★

NO RECORDS QUALIFIED FOR AIRPOWER THIS WEEK

## Broadcasters, Label Execs Tuning In To Stock Market Gold

by Kevin Carter with  
Marc Schiffman

It's no longer just the suits who are having breakfast with The Wall Street Journal. As post-Telecom Act consolidation propels broadcast stock prices upward, many of today's rank and file PDs and record execs have jumped on board today's version of the Oklahoma land rush.

Once the smell of money became extra pungent, previously passive observers immediately swung into action, diverting whatever available funds they could procure to join this high-risk, high-return enterprise. So while six-figure programming salaries are still far from the norm, one major-market PD, who asked to be anonymous, claims to have made over six figures last year just in the stock market.

In another sea change, consultant Guy Zapoleon (who owns Evergreen and American Radio Systems stock, among others) points to a growing stock market chat room on America Online, where radio folks are suddenly less interested in what songs you're playing and more concerned with what you're buying.

"The biggest change I've seen in the industry lately is that you are

now able to buy shares in the company you work for," says John Gehron, co-COO of ARS. "Until recently, only a handful of broadcast companies were public; most were privately held." And because radio has become big business, the stock market has responded favorably, to say the least. "Radio stocks have generated more activity, and thus more interest, in financial markets. That, in turn, creates more liquidity in those stocks, enabling investors to more easily buy and sell," he says.

So suddenly, the stock of the company you work for becomes available. "If you truly believe in your company, why wouldn't you want to own the stock?" Gehron asks. And unlike pork bellies, radio stocks are a subject close to most broadcasters' hearts. "Who knows this industry better than those of us in it?" he says. "We can observe who the good broadcasters are. Why wouldn't we want to own their stock?"

Gehron also owns shares of broadcast companies other than his own. "These are companies that I personally see are very well-run. We know that by observing how well they compete against us in certain markets." Although, Gehron adds with a smile,

*Continued on page 5*

...state of emergency... —how beautiful to feel...

THE PREMIERE SINGLE AND VIDEO FROM THE NEW ALBUM HOMOGENIC

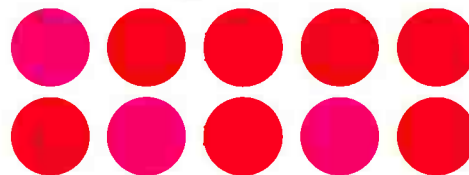
"JÓGA"

9 (OUT OF 10) -- Spin ALBUM IN STORES SEPTEMBER '97

OVER 20 ADDS INCLUDING:

Q101 KWOD KNDD WFNX WMRQ 91X XHRM

# MOBY



## James Bond Theme (Moby's Re-version)

The premiere single and video from I LIKE TO SCORE



Album in stores October 7

PRODUCED BY MOBY MGMT. MCT

Going for adds 9/29

Already getting spins at:

99X WPLA LIVE 105 KOME WLUM KDGE  
WNRK KNRK WQBK XHRM KJEE

On Elektra compact discs and cassettes. www.elektra.com  
© 1997 Elektra Entertainment Group, a division of Warner Communications, Inc. A Time Warner Company

# Dance Hall Crashers



## Lost Again

From The New Album **Honey, I'm Homely**

Already Added At:

WHFS	KOME	KITS
WAQZ	KEDJ	KLYY
91X	KDGE	WOXY
WLIR	WBZU	XHRM
WPBZ	KLZR	WXEG

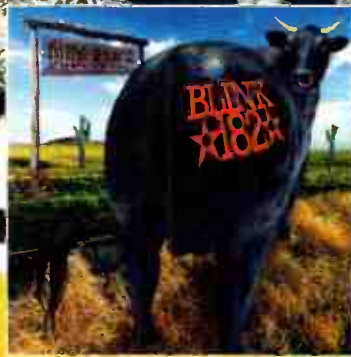
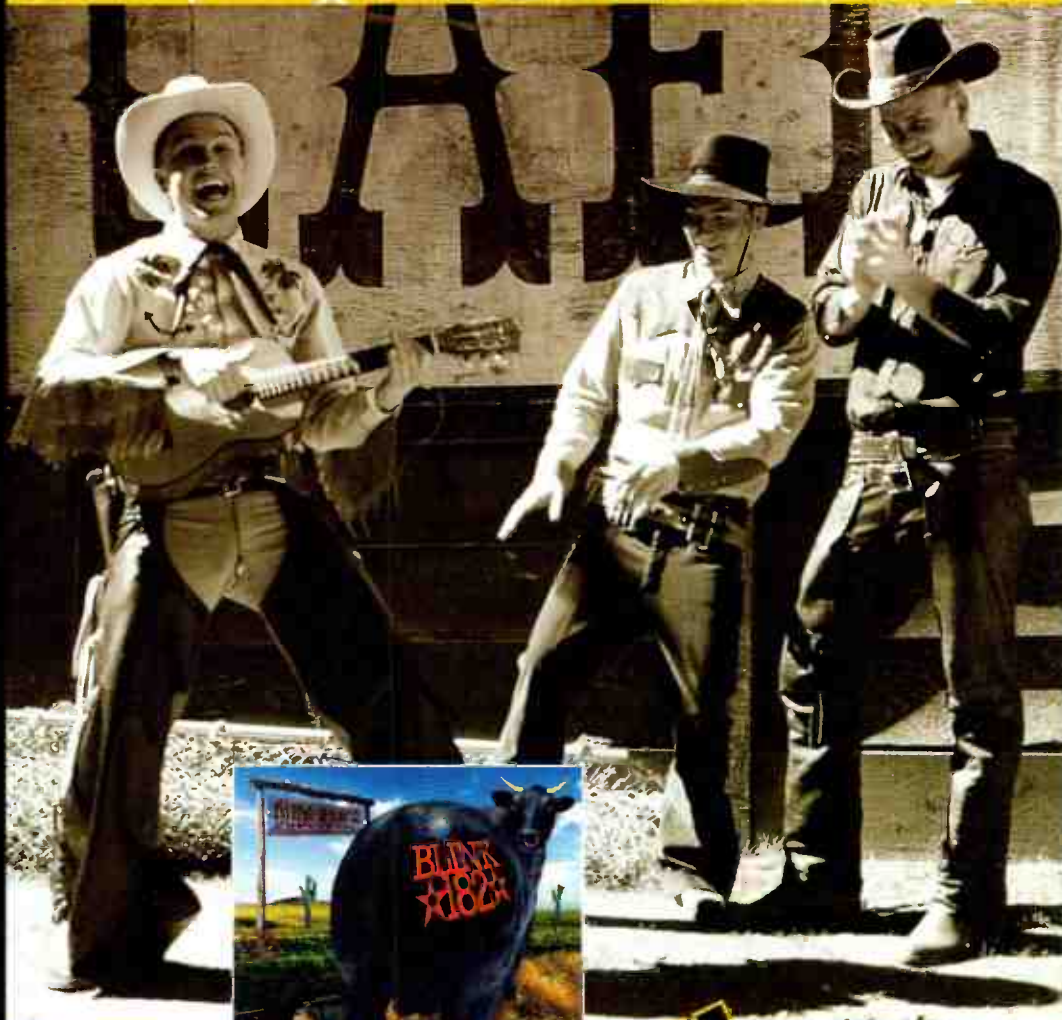
and many more!

**ON TOUR NOW!**

Produced by Stoker and Dance Hall Crashers • Management: Elyse Rogers for Goldenvoice Management  
<http://www.crashers.com> Get AMPed at MCA Records Online: [www.mcarecords.com](http://www.mcarecords.com) ©1997 MCA Records, Inc



# BLINK ★182★



## "Dammit"

(Growing Up)

From The New Album *Dude Ranch*

**NEW ADDS, DAMMIT!**

WXRK	Q101	WLUM
WENZ	WBZU	KMYZ
WHTG	WIXO	KGDE
WQBK	WPBZ	
WNFZ	WBZF	

**ON TOUR NOW!**

Produced by Mark Trombino • Management: Rick Devoe  
<http://www.blink182.com> Get AMPed: MCA Online: [www.mcarecords.com](http://www.mcarecords.com)



## Modern WXRK Adds Hard Rock Gold

**A** lot of New York industryites have noticed modern WXRK New York augmenting its music mix with the likes of Guns N' Roses "Mr. Brownstone," AC/DC's "You Shook Me All Night Long," and the Black Crowes' "Remedy." PD Steve Kingston notes that where gold from the Cult or Violent Femmes are appropriate for other markets, such as L.A., "that's not part of the history or musical appetite of this marketplace."

Here's a Sept. 16 afternoon hour on WXRK: Metallica, "Hero Of The Day"; Tool, "Aenema"; Pearl Jam, "Jeremy"; Chumbawamba, "Tub-thumping"; Foo Fighters, "Monkey Wrench"; Ozzy Osbourne, "Crazy Train"; Sneaker Pimps, "6 Underground"; Offspring, "Self-Esteem"; Moist, "Resurrection"; Van Halen, "Panama"; and Dave Matthews Band, "Crash Into Me."

CBS has responded to an FCC indecency fine for "The Howard Stern Show," contending that WXRK New York's version of the program is no longer necessarily the same as those of the affiliates who were previously fined for the show, since the host station utilizes an "independent editing" system.

Across the street, Kurt Johnson, most recently PD at classic rock WAXQ (Q104.3), heads to Philadelphia as PD of adult top 40 WYXR (Star 104.5). No replacement has been named.

### PROGRAMMING: GLASSER EXITS WFNX

Modern WFNX Boston PD Bill Glasser has tendered his resignation and is expected to stay on board until Oct. 10. Interested in the job? Rush a package to station manager Andy Kingston.

WNVZ (Z104)/WWDE (2WD) Norfolk, Va., PD Don London is upped to director of programming and will oversee the other two Max Media Norfolk outlets, modern adult WPTE (the Point) and soft AC WFOG.

SW Networks VP of programming Dave Logan exits.

Modern KNSX St. Louis PD Jim Atkinson exits and will focus solely on his RadioAirplay publication.

Classic rock KRFX Denver evening jock Steve Cooper joins classic rock KKFM Colorado Springs, Colo., as PD/afternoons. Also at the station, morning co-host Mark Stevens grabs APD stripes.

Promotion director/morning co-host Rick Daniels becomes PD for album WWWV Charlottesville, Va.

Triple-A KBXR Columbia, Mo., has swapped its 106.1 frequency with oldies KOQL at 102.3.

Modern WDGE Providence, R.I., has changed its moniker from the Edge to 99-7-X.

Modern adult KLLY Bakersfield, Calif., PD Russ Davidson announces his impending departure; packages to consultant Randy Lane.

Triple-A WCBR Chicago is no longer running its eclectic Cyber Radio rhythmic top 40 format on weekends.

Modern adult WHPT Tampa, Fla., APD/MD Chris Taylor is named PD of top 40 sign-on WJOI (107.5 Kiss FM) Memphis.

Arbitron is adding three markets this fall. Fort Collins/Greeley, Colo., will be market No. 135. Lewiston, Maine, will be No. 252. Cookeville, Tenn., will be market No. 259.

Classic rock WXLN Carbondale, Ill., owner Zimmer Broadcasting picks up soft AC WUEZ as its sixth signal in the market.

### PEOPLE: EAGLE SPORTS VAN DYKE

Classic hits KHTC Phoenix picks up market veteran Charlie Van Dyke as its new morning anchor while the station reinvents itself as KGLQ (Eagle 96.9). Van Dyke and his co-host

Michael Hagerty (who remains a reporter on local KTVK-TV) join Mary Reilly, already doing morning news on the station.

KTXQ (Q102) Dallas morning men Lex and Terry are stirring up the market with a TV campaign that has already earned them the honor of being pulled from two area TV stations. The commercial depicts a sick child imploring the pair to do one more funny show for him and then cuts to the two DJs at the boy's grave with Lex saying to Terry, "I thought it was a funny show."

At Chancellor's KYSR (Star 98.7) Los Angeles, Jonathon Brandmeier's current unofficial target start date is Sept. 22. If all goes according to plan, look for morning talent Larry Morgan to shift to middays, moving Merilee Kelly to weekends. Lisa Foxx will drop her morning traffic reports in favor of afternoons with Ryan Seacrest.

Album KTYD Santa Barbara, Calif., morning man Steve Downes

heads to Chicago for afternoon drive on album WLUP.

Former album KFRQ McAllen, Texas, PD Alan Sells returns to the station for mornings. That moves PD Mike Quinn to afternoons, where he takes the shift and MD stripes of outgoing Tony Forina.

Midwest radio vet Dan Tooker (ex-KFRX Lincoln, Neb.) joins modern KKDM Des Moines, Iowa, for mornings as J.R. Baldwin. In a market with three high-profile, nationally syndicated shows (Don Imus, Mancow, Bob and Tom), the newly named "Early Morning Buzz" will be a local, music-based show featuring Baldwin, current co-host Amy Sweet, and PD/VP/GM J. Michael McKoy, who is looking for a lifestyle-based news person to complete the show.

Album KBAT Odessa, Texas, taps former ABC Z-Rock night host Jeff "Wipeout" Crouch for mornings, along with KTSR Bryan, Texas, middayer Tim Stewart. They replace Peter Jaren, who exits, and Stevie Wynne, who will remain on board for P/T.

Classic rock WXRQ Biloxi, Miss., picks up the John Boy and Billy network feed, moving morning host Kevin Cruise to active rock sister WCPR, where he joins the morning show.

Album WBYR Fort Wayne, Ind., MD/middays Roxanne McVay adds the APD role. Meanwhile, morning newswoman Jill Methany crosses the hall to classic rock WFVI (the Fort) as local producer of the Bob and Tom show, while former board op Matt Quinn replaces Jerry McCrae in nights. Crosstown modern WEJE overnigher Tish Liddell gets P/T work with WFVI.

Modern KWOD Sacramento, Calif., officially names P/T Carla "Raz" Raswyck MD/middays.

Top 40 KHTW La Crosse, Wis., night jock Phil Grolsch returns to the promotion department at modern WKQX (Q101) Chicago, where he previously served as an intern.

Active KDOT Reno, Nev., overnigher Martina Davis moves to afternoons, replacing Steve Funk. Jay Slater crosses the hall from overnights at sister classic rock KOZZ to nights at KDOT, replacing the exited Chris Payne.

Modern KNRK Portland, Ore., night jock Woody exits. KNRK's "man in the van," Buzz, takes nights.

Triple-A WKOC Norfolk's Kristina Hart joins adult top 40 WJLK (the Point) Monmouth, N.J., for nights.

Jones Radio Network ups Tina Lorraine to middays on its modern format.

Album WRCN Long Island, N.Y., adds "The Local Buzz" to its weekend lineup, spotlighting music and interviews from local talent.

## 1997 Billboard/Airplay Monitor Radio Seminar Rocks On

The lineup of rock artists set for the 1997 Billboard/Airplay Monitor Radio Seminar and Awards in Orlando, Fla., has expanded. Oct. 16's opening festivities will feature Sister Hazel and Dance Hall Crashers. As reported last week, the performances Oct. 17

include Creed. The night of Oct. 18, the awards-show bill includes new female singer/songwriter Alana Davis.

At the panels, the mainstream rock discussion "Building The Rock Wall" adds Paxson Miami VP of FM programming Gregg Steele and Cromwell Group director of programming Brian Krysz.

As reported earlier, MTV executive VP of programming Andy Schuon has been confirmed as the keynote speaker, kicking off the seminar at 10:15 a.m. Oct. 17. Former

Rock Airplay Monitor managing editor and current SW Networks director of rock programming John Loscalzo will moderate the modern rock panel. Other panels include "Modern Times For Adult Radio," "Back To School: Building The Perfect Manager," and an all-format session in which radio and record folks have the chance to query Broadcast Data Systems and Airplay Monitor staffers. This year's "Air Personality Supergroup" includes Tom Griswold of the syndicated morning team Bob and Tom.

The 1997 Billboard/Airplay Monitor Radio Seminar and Awards will be held Oct. 16-18 at the Orlando Renaissance Resort in Orlando, Fla. For registration info, please call Maureen Ryan at 212-536-5002. For hotel and airline info, call Pepp Travel at 800-877-9770.



GRISWOLD



## Andreone Gets Buzz'd



After repeated rain-outs of Lean Andreone performances slated for the World Trade Center in New York as part of modern adult WNSR (the Buzz) New York's summer concert series, the station finally gave up and asked Andreone to play in their building just outside the station lobby, which she did to a riveted crowd. Andreone is shown with guitarist John Lowery.

## PERSONNEL FILE BY STEVE GRAYBOW

### Abramson Joins TVT; Renet To Revolution

**M**ark Abramson, formerly with the Enclave, joins TVT, handling national rock promotion alongside Sudi . . . Sean Renet takes over the alternative promotion chair at Revolution, replacing Doug LaGambina. Renet comes from National Music Marketing . . . Red Ant adds former Interscope promo assistant Brett Glassman as New York regional and Ron Metz, formerly with PGD, as Chicago regional . . . Valerie Delong joins Universal as VP of promotion Sept. 22.

"Storytellers," VH1's singer/songwriter series, may soon launch its first albums, according to Billboard Bulletin. Artists who have appeared on the show include Ray Davies, Billy Joel, and Elton John . . . Bulletin also reports that the platinum-selling act Tool has filed a lawsuit against Freeworld Entertainment, alleging that the label failed to properly exercise an option to renew its contract. Freeworld is seeking an injunction to prevent Tool from delivering recordings to any other label, declaring its contract with the band valid, and more than \$25 million in damages.

Sting will perform his composition "I'm So Happy I Can't Stop Crying" Sept. 22 on the Country Music Awards, along with a band made up of nominees for musician of the year . . . Metropolitan Entertainment plans a third Further Festival next summer, promising a more Grateful Dead-themed presentation than 1997's tour, which was headlined by the Black Crowes.

# RADIO CONCERT MONITOR

DATE	CALL LETTERS	EVENT	SCHEDULED TO APPEAR
Sept. 20	KEDJ Phoenix	That Damn Show	Artificial Joy Club, Bloodhound Gang, Buck-O-Nine, Goldfinger, Mighty Mighty Boss-tones, Offspring, Our Lady Peace, Phunk Junkeez, Soul Coughing, Voodoo Glowskulls
Sept. 20	KLOS Los Angeles	Mark and Brian 10th Anniversary Concert	38 Special, Little Feat, Corey Stevens, ZZ Top
Oct. 4	WMRQ Hartford, Conn.	Big Day Off	Love Spit Love, Offspring, Reel Big Fish, Third Eye Blind
Oct. 4	XETRA-FM San Diego	Sunfest	TBA

To include your station's concert information in Rock Concert Monitor, call Marc Schiffman at 212-536-5065, fax 212-536-5286, or E-mail [mschiffman@billboard.com](mailto:mschiffman@billboard.com)

## CLASSIC ROCK CHART

TW	LW	SONG-ARTIST	STATIONS	PLAYS	
				TW	LW
1	1	After Midnight—Eric Clapton	19	93	81
2	4	Peace Of Mind—Boston	18	81	73
3	13	Carry On Wayward Son—Kansas	18	77	68
4	20	Tush—ZZ Top	18	74	62
5	14	Magic Man—Heart	19	73	67
6	7	Another Brick In The Wall (Part II)—Pink Floyd	18	73	71
7	10	Don't Fear The Reaper—Blue Oyster Cult	18	73	69
8	39	Layla—Derek & the Dominos	19	72	58
9	3	More Than A Feeling—Boston	18	72	76
10	6	Sweet Emotion—Aerosmith	17	72	71
11	25	Money—Pink Floyd	19	71	60
12	12	Dream On—Aerosmith	19	70	68
13	5	The Joker—Steve Miller Band	19	69	72
14	44	Barracuda—Heart	18	69	57
15	28	All Right Now—Free	16	68	60
16	8	Sultans Of Swing—Dire Straits	18	67	70
17	36	Rock'n Me—Steve Miller Band	18	67	58
18	—	You Ain't Seen Nothing Yet—Bachman-Turner Overdrive	18	66	52
19	—	Radar Love—Golden Earring	18	66	55
20	9	Black Magic Woman—Santana	18	66	69
21	15	Cold As Ice—Foreigner	19	65	67
22	2	La Grange—ZZ Top	17	65	78
23	19	China Grove—Doobie Brothers	18	65	63
24	22	Blinded By The Light—Manfred Mann's Earth Band	19	64	62
25	—	Behind Blue Eyes—Who	19	64	54
26	—	Walk This Way—Aerosmith	18	63	52
27	—	Just What I Needed—Cars	17	63	54
28	—	Reelin' In The Years—Steely Dan	19	63	52
29	—	Hotel California—Eagles	17	63	56
30	32	Already Gone—Eagles	18	63	59
31	—	Jet Airliner—Steve Miller Band	18	63	56
32	18	Long Time—Boston	19	63	64
33	—	Born To Be Wild—Steppenwolf	16	62	56
34	—	Breakdown—Tom Petty & the Heartbreakers	17	62	54
35	—	Feel Like Makin' Love—Bad Company	17	62	57
36	—	Frankenstein—Edgar Winter Group	18	62	51
37	—	Magic Carpet Ride—Steppenwolf	18	62	52
38	37	Brass In Pocket (I'm Special)—Pretenders	17	61	58
39	38	Bad Company—Bad Company	17	61	58
40	—	Cocaine—Eric Clapton	17	61	47
41	21	Take The Money And Run—Steve Miller Band	17	61	62
42	—	Money For Nothing—Dire Straits	19	60	57
43	—	Night Moves—Bob Seger & the Silver Bullet Band	17	60	50
44	40	Two Tickets To Paradise—Eddie Money	18	60	57
45	—	Beast Of Burden—Rolling Stones	18	60	52

### Classic Rock Reporters:

WZGC Atlanta, WZLX Boston, WCKG Chicago, WXCD Chicago, WOFX Cincinnati, WNCX Cleveland, WCSX Detroit, KKRW Houston, KCFX Kansas City, KCBS Los Angeles, WBGG Miami, WAXQ New York, WNEW New York, KSLX Phoenix, KGON Portland, Ore., KSEG Sacramento, Calif., KZOK Seattle, KSD St. Louis, WARW Washington, D.C.

EDITOR IN CHIEF: HESTON HOSTEN  
 EDITOR: SEAN ROSS  
 MANAGING EDITOR: MARC SCHIFFMAN  
 MAINSTREAM ROCK/TRIPLE A CHART MANAGER: ANTHONY COLOMBO  
 MODERN ROCK CHART MANAGER: MARK MARONE  
 MODERN ADULT CHART MANAGER: STEVE GRAYBOW  
 WRITER/REPORTER: DANA HALL  
 CHART PRODUCTION MANAGER: MICHAEL CUSSON  
 ASST. CHART PRODUCTION MANAGER: ALEX VITOULIS  
 EDITORIAL PRODUCTION MANAGERS: BARRY BISHIN, MARCIA REPINSKI  
 EDITORIAL PRODUCTION: MADELINE CARROLL, SUSAN CHICOLA,  
 MARC GIAQUINTO, SARAH JOHNSON, MARIA MANLICIC  
 COPY EDITOR: CARL ROSEN  
 ADVERTISING PRODUCTION MANAGER: LYDIA MIKULKO  
 ASSOC. ADVERTISING PRODUCTION MANAGER: CINDIE WEISS  
 ADVERTISING ART DIRECTOR: RAY CARLSON  
 ADVERTISING PRODUCTION ARTIST: SHIRA HALFON

©1997 BPI Communications  
 1515 Broadway, New York, NY 10036 212-764-7300  
 For subscriptions call: 800-722-2346

Airplay Monitor reporting panels are based solely on a station's musical content.

GENERAL MANAGER: JON GUYNN  
 ACCOUNT MANAGERS: GARY NUJELL, JEFF SOMERSTEIN  
 ADVERTISING SERVICES MANAGER: ALYSE ZIGMAN  
 SALES ASSISTANTS: EVELYN ASZODI,  
 ERICA BENGTON, TODD MAYCHER  
 EDITORIAL ADVISER: TIMOTHY WHITE  
 PRODUCTION DIRECTOR: MARIE GOMBERT  
 DIRECTOR OF MARKETING: ELISSA TOMASETTI  
 CIRCULATION DIRECTOR: JEANNE JAMIN



PRESIDENT: HOWARD LANDER  
 SENIOR VP/GENERAL COUNSEL: GEORGINA CHALLIS  
 VICE PRESIDENTS: KAREN OERTLEY, ADAM WHITE  
 DIRECTOR OF STRATEGIC DEVELOPMENT: KEN SCHLAGER  
 BUSINESS MANAGER: JOELLEN SOMMER



## CHEET SHEET BY MARK MARONE

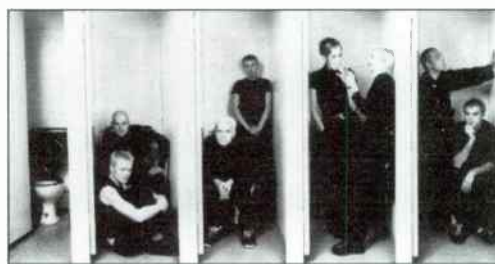
212-536-5051 • [mmarone@billboard.com](mailto:mmarone@billboard.com)

### Chumbawamba Thumps The Tub

Chumbawamba may sound like the name of some kind of too-sugary chewing gum, but that was intentional for this politically minded British underground band. The gibberish name belies a fierce commitment to art and music as a political weapon.

"We're an anarchist collective that's been around for years," says Alice Nutter, one of two females in the eight-member organization. "We never consciously sat down and said, 'We'll be a band.'" Formed in 1981, Chumbawamba was an outgrowth of the philosophical and political musings of eight young punk-rock fans who shared a large house in Leeds. Fueled by the less celebrated and perhaps more radical movements of left-wing British punk bands Crass and the Fall, the housemates adopted those bands' insurgent ideals as a creed to live by. "And that wasn't because somebody gave us a huge election pamphlet or some huge political spiel; it was the attitude. It was the glamour and sexiness of the rebellion that sent us off on a different avenue," says Nutter. "I think that's what music can do; it can give people a glimmer that life doesn't have to be your parents. That's what Elvis did."

When Chumbawamba formed as a band, it also purchased a printing press. Through its own publishing house, the group reprinted chapters of old subversive literature and turned them into pamphlets, posters, and postcards that were distributed at shows. Becoming musicians was al-



CHUMBAWAMBA

most an afterthought. "Everybody wants to create things," says Nutter, "and if you're not good enough to be a footballer or stupid enough to be a model, then you join a band, don't you?" And of course, you form your own label as well. Chumbawamba began releasing records on its own Agit-prop label in 1982.

Disavowing all things conservative extended to Chumbawamba's approach to playing music as well, particularly songwriting. The band immediately distinguished itself by creating a framework in

which there were no lead singers, front persons, or main songwriters. "We wouldn't have choruses, because we thought they were too traditional," Nutter says with laugh. "And we didn't have middle eights. We had a list of things that we had down as clichés." Among these were a ban on love songs, a requirement that each song contain more than one identifiable style of music, and the switching of instruments during live performances. It soon became apparent that the last guideline was too impractical, and it was abandoned when the stage began resembling "King's Cross at rush hour" and the demands of learning other instruments proved too much.

Although "Tubthumping" is its first official U.S. release, it's actually Chumbawamba's ninth album (the title is a British word for a soap-box speaker). In fact, the album was originally recorded as the band's third set for indie One Little Indian last year. But when it was delivered to the label, the reaction was far from joyous. The label vetoed "Tubthumping" and suggested that the band take a year off and write some better songs. "Instead of us walking off with our tail between our legs, we basically said to fuck off," says Nutter.

It proved to be a blessing in disguise. Over the past three years, Chumbawamba had been receiving praise for its singles by Jonathan King, publisher of the British music-industry magazine The Tip Sheet. King wondered aloud why this band hadn't been picked up by a major yet. He included "Tubthumping" on the magazine's CD compilation, which resulted in big-time major-label interest for the band.

Though many labels were interested, almost all were reluctant to work with a band with a reputation for being unwavering about its involvement with politics. EMI Germany and Universal were the exceptions, but not without some concern on the part of the latter. Universal's apprehension was realized when Chumbawamba submitted the artwork for the CD booklet, which is full of quotes from newspapers, literature, and films. Convinced it could be a potential litigation nightmare to clear the copyrights on the entire package, Universal asked if the act could come up with an alternative. "We've done a blank booklet that says 'due to American lawyers we couldn't put in the things we wanted to. If you want it, contact this address, and we'll send you one free,'" says Nutter.

So after 15 years as a collective/band in which it has explored everything from an album of a cappella traditional English folk songs to anthemic punk rock, Chumbawamba believes it has made an album that defines its master plan: infiltrating the masses with subversive messages under the guise of pop/dance music. "I want it to be in people's kitchens. I like the idea of me mom washing up and hearing us," enthuses Nutter, who has legally adopted the name of a 17th-century Lancashire witch who was the last woman to be hanged for witchcraft in England.

Lyrically, Nutter says, "Tubthumping" is this idea of standing up and saying your peace, and I'd apply that to us. But at the same time, it's about the drunk in the pub that says his peace on a Friday night. And that no matter how crap his life is, for a few hours he's full of the joys of life and he's gonna say what he wants to say, have a great time, and stagger on." Like Nutter says, whether you're fighting conservatism with the odds stacked against you or you're a victim of the economic system and living below the poverty level, you "still have moments where life is sweet."

## ON THE AIR

### NEW STATIONS AND OTHER REPORTER CHANGES FROM BDS & AIRPLAY MONITOR

Effective this week, WFNX Boston is re-added to the modern rock panel. Also, KMBY Monterey, Calif., is removed from the triple-A panel due to a format change. There are now 81 modern rock and 24 triple-A reporters.

## Broadcasters, Label Execs Tuning In To Stock Market Gold

*Continued from page 1*

"there is something to be said about buying stock in the ones that aren't so well run either, because you have to figure that someone will end up buying them."

Pollack Media Group's Jeffrey Pollack has always dabbled in radio stock as part of his overall investment strategy. "My whole philosophy investing in any company is looking at the management team, at the track record quarter by quarter, and the amount of debt a company has accumulated," he says. "There are a few companies that I invest in on a regular basis, because I feel a confidence that quarter after quarter there will be an improvement in company cash flow. There are a lot of good companies, but you can't allocate your investment dollars all over the place."

Pollack says being an investor makes him sensitive to what management wants when he happens to work with companies that he may own stock in. "There's a higher degree of pressure to make sure this quarter is better than the last quarter. That's what you tend to understand when you invest. Things need to happen quicker, and you just have to affect ratings performance and results quicker. All of us are used to being under pressure to make things happen quickly."

### PROFITING FROM THE COMPETITION

Modern adult KFMB-FM (Star 100.7) San Diego OM/PD Tracy Johnson is an elder statesman in the stock game, having first ventured into the market in 1985. "You always hear from radio people that they can't make any money in this business," he says. "Hey, you're already in radio—now you have a way to use that to make money, and, even better, how to make money off of your competition."

The only broadcast stock Johnson currently owns is ARS. "I've also bought and sold several other broadcast stocks over the last few years," says Johnson, who keeps a TV in his office tuned to CNBC to periodically check his portfolio during the day.

One broadcast company Johnson has his eye on right now is Saga Communications. "Their stock hasn't moved lately out of the \$18-\$21 range, but I feel they're a well-run, value-oriented broadcast stock and a company without a lot of debt," he adds.

### IT'S EASY TO PLAY

Many brokerage firms now offer simplified online access. Maintenance is as low as you want to make it, says Johnson. "You can set pre-determined buy and sell points which will automatically trigger your order to buy or sell X number of shares of whatever stock at whatever price you've pre-set. You can also set time limits so you don't have to constantly watch it," he adds.

"It sounds simple, but start reading a lot," advises Johnson. Other than The Wall Street Journal, there's also a wealth of information for new players available online, he adds. "Once you learn to follow the normal price swings of stock, you begin to understand how markets move, and most of it is fairly predictable," he says. "While there will always be some surprises, after a while you become less surprised and can actually start seeing patterns develop."

Johnson adds a cautionary note. Having been an investor for 12 years, he now sees the market saturated with rookie investors. These busloads of bandwagon-jumpers are one sign of a market "top," he says, "where there is now more downside than upside opportunity."

"Just because the market happens to be going up right now doesn't mean it's going up forever. Right now there's an infusion of new money and the people to fuel it, mainly through 401K plans and mutual funds, but if we see anything on the horizon to spook the market, like interest rates increasing, or if these companies fail to meet earning expectations, that will send these new investors running for the sidelines," Johnson adds. "Many of these first-timers aren't completely sure what they're investing in or how the market really works. If

the market were to suddenly drop by 20%, it could trigger a mass exodus, which would have an adverse effect on the market."

### THE NEXT MICROSOFT?

Chancellor Media chief programming officer Steve Rivers owns stock in his own company, as well as some non-broadcast stock. Answering those who predict the bottom will eventually fall out of the broadcast stock frenzy, Rivers says, "Given the size of companies like Chancellor and CBS, I don't see that happening. They're too big, with too much critical mass. Our primary focus is not waiting for the bottom falling out; it's waiting for the prices to go up."

Rivers sees a similar situation with today's average radio folks dabbling in the market and with the original ground-floor Microsoft employees. Radio people start playing the market more or less as a hobby, and many have actually made money. "The Microsoft employees were just computer programmers, working for peanuts, and were given some stock options to placate them," says Rivers. These same people are now millionaires, living in lakefront mansions in suburban Seattle.

While Pollack is likewise bullish on the radio operators, he does note that we're still in for a time of settling in. "We're in a learning curve," he says. "Everyone is looking to figure out the best way to operate these huge companies... A lot of companies are [finding the correct way of] organizing the managers and programmers and salespeople, but I still think there's going to be a shaking-out period. Ultimately, people will find the regional plan will make the most sense."

### RECORD EXEC URGES CONSERVATISM

Bob Catania, head of promotion at Geffen Records, has been actively involved in the stock market since 1984, also a bit earlier than most, and considers himself more of an old-school, long-term, lower-risk stock trader. "I don't really play the market. I think of myself as more of a long-term player," he says. "I look for the big, solid companies that will perform over the long haul. It's hard to argue with IBM, Microsoft, and Intel."

Back in 1984, Catania invested \$5,000 he received from a retirement plan. "There was a Shearson-American Express office near my house, so I asked them to help me," says Catania, who still uses the same broker, now at Smith Barney, and has built handsomely upon that original investment.

He also feels strongly about buying stock in companies you admire. Catania, a noted Disney memorabilia collector, bought 50 shares of Disney stock at \$60 each in 1984, mainly because, in his words, "I thought it would be cool." The purchase happened to coincide with Michael Eisner's arrival. "Within three years, it was up to 160, then split four for one, then went back up to 120 and split two for one again."

The only broadcasting stock Catania ever owned was Infinity. "I did well with that and held on to it right through the merger with Westinghouse," he says. "One thing I learned—Wall Street loves Mel [Karmazin]. When the bigger players like him get involved, the stock popped immediately."

Otherwise, says Catania, "I find today's broadcasting stocks fascinating but very volatile. My portfolio is relatively stable, with more long-term investments."

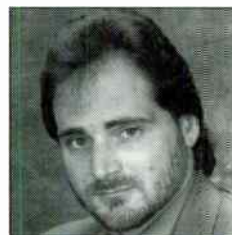
Similarly, Pollack notes that most of us don't have unlimited cash to tap. "You have to [decide whether] you want to own Gillette or pull your money out for one of the radio companies," he says. "I think a lot of these are sexy investments, but you just have to say to yourself, 'Let's try to evaluate whether I should be in this new broadcast company or should I be in Intel'... If you're going to invest in a broadcast entity, you have to satisfy yourself that it's not just a big company but can manage itself efficiently."

## MONITOR PROFILE

### With Hudson Valley Looking More Like NYC, Modern Is Mass-Appeal For WRRV

**I**n this era of consolidation, when PDs are looking to work their way through a company's ranks, modern WRRV Middletown, N.Y., VP/GM Bill Palmeri is ahead of the game. He was on that tip years ago, and he did it with a small company in upstate New York that gave him his first radio job 15 years ago in weekend overnights at then album WPDH Poughkeepsie, N.Y., across the river from where he now works. Today, WPDH's 2-year-old sister WRRV is enjoying a 9.3 12-plus share, capping two years of steady growth.

Changes both in the signal and the market helped kick WRRV into overdrive. While classic rock WPDH's signal has long penetrated both halves of the Newburgh, N.Y./Middletown market, WRRV recently added a simulcast partner that covered the other side of the Hudson River, including "Marist College, Vassar College, New Paltz, the Culinary Institute, Bard, [and] a nice collection of people from throughout the



*'We look at the Hudson Valley as one entity'*

**Bill Palmeri**  
VP/GM  
WRRV Middletown, N.Y.

[New York metro area], which helped the area thrive a little bit from a music standpoint." WRRV's Orange County home is slightly more rural than Dutchess County, but "now that we're simulcasting to the whole valley, it doesn't make a difference. We look at the Hudson Valley as one entity."

"At one point this was upstate New York. Now, Orange County and Dutchess County are very much a part of suburban New York City... You just see what the kids are doing and dressing and how they're acting in the shopping malls. Long before MTV became part of everyday culture, in the early '80s, all of a sudden the kids in upstate New York started to look like the kids in Westchester and Long Island."

Palmeri says WRRV evolved out of sister WPDH. "We found as... [WPDH was] approaching their 20th anniversary that although they were doing a good job catering to the classic rock audience and to the new music audience, they weren't doing a great job serving either. When we had the opportunity to purchase a new station, we did a format search, and the word on the street and most certainly in our building was, 'Maybe it's going to AC. Maybe it's going to be country.' And what we found was that there was a hole for rock 'n' roll. And our first reaction was to look at each other in the room and say, 'What do you mean? WPDH is here. There's no room for rock 'n' roll.' And 'PDH had already begun to slide toward classic, because of the money demo, and I guess you could say we took a big gamble, because we could have competed against ourselves, and what happened was 'PDH's numbers went straight through the roof.'"

Indeed, even as WRRV has risen 4.0-5.1-9.3 since its spring '95 launch, in Middletown, WPDH has grown as well, 6.2-8.9-10.0.

Here's a sample hour on WRRV: Artificial Joy Club, "Sick & Beautiful"; Wallflowers, "One Headlight"; Beastie Boys, "Sabotage"; Talk

Show, "Hello Hello"; No Doubt, "Just A Girl"; Dandy Warhols, "Not if You Were The Last Junkie On Earth"; Bush, "Comedown"; Counting Crows, "Angels Of The Silences"; Live, "Turn My Head" (live); K's Choice, "Not An Addict"; Blues Traveler, "Most Precarious"; Alice In Chains, "Would?"; and Oasis, "Don't Go Away."

WRRV was initially regarded as an active rocker, but Palmeri says he's always thought of the music as predominantly alternative, even when the station cast a wide net. "We've always had the problem with, 'Jeez, if other people are playing it, I guess it's not alternative. Let's not touch it.' That's kind of silly. People who care about this form of music or progressive music have been fighting for 30 years to get their own radio. Now that they have it, why destroy it just because some of it's working?"

So, while WRRV dabbles in acts that some would consider active's turf, he attributes that to his market longevity. In the Hudson Valley, "People like more than one sort of music. We know that there are people who still dig Elvis Costello and Graham Parker and the Pretenders, but they also like Stone Temple Pilots and Pearl Jam and Smashing Pumpkins, and it doesn't stop there."

Palmeri says that as the culture of the market has matured, so has the level of radio. "It's gotten so much better since consolidation started," he says, recollecting the days when WPDH and top 40 WSPK were the only major players. "I think it's made a positive difference when you go into a rating period now. It's not one or two stations doing these big promotions. They're all doing big promotions. They're all out in the malls and at the county fairs and at the street festivals."

"I was happy when some real owners and real radio people came into the market, because it keeps not only yourself but your staff on their toes. It's easy for your programming people and especially the jocks to get so content with what's going on when... the other three or four stations in the market have nothing on the air, people who just can't talk. And that's changed quite a bit over the last few years in a positive way."

Palmeri's years with WPDH saw him grow from P/T to full time and then take on promotions and programming. But as consolidation became the reality, he was named operations manager over multiple stations. "When they decided to create a new entity, being WRRV, they gave me what I consider a fortunate opportunity," he recalls, which was to become GM of the new station and N/T sister WALL. He calls the move his proudest career moment, because "as a programmer, I got into management, where you're not supposed to be."

"The most important decision I ever made was to not bounce around and stay with one company," adds Palmeri. "Fortunately it was a good company that likes to hire from within, likes to train its own employees, especially when it comes to management. And they gave me the opportunity to learn on the job, which is a definite rarity, especially in this age of consolidation."

And all that with a small, privately held company. Palmeri says the staff of Robert Dyson's six Hudson Valley stations "appreciates the fact that... he lets the radio people run the radio stations. He'll call every once in a while. He will show up [at] major meetings. But he listens. That's what they teach you in management: Listen first. He listens to us, we listen to him when we feel it's appropriate, and we most certainly have learned from him. But as long as we continue to succeed from a programming standpoint and make money from a sales standpoint, he takes a back seat." **MARC SCHIFFMAN**

# GREATEST GAINERS

Strongest Increase In Airplay This Week

## MAINSTREAM ROCK

INCREASE  
IN PLAYS

<b>COLLECTIVE SOUL • Blame (ATLANTIC)</b>	<b>+297</b>
WZAT +21, KEGL +16, KTUX +15, WRDU +15, WTAK +14, WRXK +13, WIXV +12, WRCX +12, WTPA +12, WJRR +11	
<b>KENNY WAYNE SHEPHERD BAND • Slow Ride (REVOLUTION)</b>	<b>+283</b>
KATT +17, KISS +16, WRDU +15, WTPA +14, KLBK +13, WRXK +12, KQRC +12, WRXL +12, KXUS +9, WIMZ +9	
<b>THE ROLLING STONES • Anybody Seen My Baby (VIRGIN)</b>	<b>+277</b>
KYYS +22, KCAL +20, KTUX +18, WAPL +14, KDKB +14, WRDU +13, KATT +13, WZZO +12, KTAL +12, KOMP +12	
<b>GREEN DAY • Hitchin' A Ride (REPRISE)</b>	<b>+254</b>
KATT +18, WZAT +15, WLZR +13, KRAB +11, KBPI +11, WMFS +10, KLAQ +10, WKLO +10, WJRR +9, WRCX +9	
<b>DAYS OF THE NEW • Touch, Peel And Stand (OUTPOST/GEFFEN)</b>	<b>+203</b>
KRAB +15, WDHA +14, WBZX +13, WRXL +12, KTXQ +12, WZZO +11, WARQ +10, WZTA +10, WRQC +8, WXRK +8	
<b>EVERCLEAR • Everything To Everyone (CAPITOL)</b>	<b>+176</b>
WZAT +16, WAVF +11, KEGL +11, WMFS +10, WAPL +10, KBPI +10, KEZO +8, KRZR +8, WIXV +7, WZTA +7	
<b>FOO FIGHTERS • Everlong (ROSWELL/CAPITOL)</b>	<b>+150</b>
WRQC +21, KRAB +15, WTPA +11, WNOR +11, WARQ +10, WCCC +10, KSJO +7, KRXQ +7, KBER +6, KTYD +5	
<b>TALK SHOW • Hello Hello (ATLANTIC)</b>	<b>+119</b>
WAAF +14, KTXQ +13, WMFS +12, WRXL +11, KXUS +8, WTPA +8, WMMS +8, KNKN +6, KEGL +6, WZAT +5	
<b>CREED • My Own Prison (WIND-UP)</b>	<b>+113</b>
WXRK +15, KEGL +14, KOMP +12, KBPI +9, WARQ +7, KRAD +6, KRZR +6, WLZR +6, WBZX +5, KILO +5	
<b>THE OFFSPRING • I Choose (COLUMBIA)</b>	<b>+106</b>
WRXL +16, KOMP +13, WWDC +12, KRZR +10, WRQC +8, KISW +8, KCAL +6, WTAK +5, WRCX +5, KTUX +5	

## MODERN ROCK

INCREASE  
IN PLAYS

<b>CHUMBAWAMBA • Tubthumping (REPUBLIC/UNIVERSAL)</b>	<b>+450</b>
KTOZ +30, WRXK +28, KROX +24, KXRK +23, WXRK +20, WKDF +20, KLZR +19, WNVE +18, WBZU +17, KWOD +17	
<b>OASIS • Don't Go Away (EPIC)</b>	<b>+410</b>
KXRK +23, WNNX +23, WEND +22, WBTZ +21, KXPK +19, CFNY +19, WBZU +18, WKQX +17, KKDM +16, WXRK +16	
<b>EVERCLEAR • Everything To Everyone (CAPITOL)</b>	<b>+372</b>
KCHZ +32, KEDG +18, WXEG +16, KFTE +15, WCYY +15, WROX +15, KKDM +14, KTbz +14, XHRM +14, KNRX +13	
<b>GREEN DAY • Hitchin' A Ride (REPRISE)</b>	<b>+271</b>
WENZ +27, KTOZ +23, WCYY +15, KFTE +13, WRZX +13, WNVE +13, KCHZ +11, WQBK +10, WEQX +10, KCXX +9	
<b>THE SUNDAYS • Summertime (DGC/GEFFEN)</b>	<b>+208</b>
WLIR +32, KZON +23, KTbz +20, KCXX +18, KNRX +16, WEND +15, WRXQ +8, WKQX +7, KTCL +7, WLUM +6	
<b>GOLDFINGER • This Lonely Place (MOJO/UNIVERSAL)</b>	<b>+201</b>
KDGE +22, KCXX +19, WKQX +18, WCYY +15, WBZU +11, KKDM +10, KNRK +10, WNVE +10, WLUM +10, KEDG +8	
<b>DAYS OF THE NEW • Touch, Peel And Stand (OUTPOST/GEFFEN)</b>	<b>+195</b>
WDGE +17, KKDM +17, WQXA +17, KNRX +13, KEDG +13, WBRU +13, WKRL +11, WQBK +11, KEKE +11, WRXR +10	
<b>THE MIGHTY MIGHTY BOSSTONES • The Rascal King (BIG RIG/MERCURY)</b>	<b>+168</b>
KFRR +21, WRXQ +18, KLZR +15, KKDM +13, WROX +13, WQXA +11, WRXR +10, KNRX +9, WXZZ +8, KHXY +8	
<b>LONGPIGS • On And On (MOTHER/ISLAND)</b>	<b>+163</b>
KXRK +24, WBZU +18, WFNX +13, KTEG +12, KPNT +12, WMRQ +12, KEDG +8, WEQX +8, KNRK +7, KTCL +7	
<b>THE OFFSPRING • I Choose (COLUMBIA)</b>	<b>+152</b>
WXRK +15, KEDJ +15, KPNT +14, KROQ +14, KEDG +13, WNNX +13, KOME +12, WRZX +9, WEDG +7, KMYZ +7	

# VIDEO PLAYLISTS

MOST PLAYED ROCK TRACKS



	TW	LW		TW	LW
1	39	27	1	Sugar Ray, Fly	27 31
2	39	26	2	Fiona Apple, Criminal	25 29
3	39	15	3	Smash Mouth, Walkin' On The Sun	25 20
4	39	28	4	Jewel, Foolish Games	22 26
5	28	20	5	Matchbox 20, Push	22 31
6	25	22	6	Foo Fighters, Everlong	19 15
7	23	14	7	Sarah McLachlan, Building A Mystery	17 18
8	23	0	8	The Dandy Warhols, Not If You Were The Last Junkie On Earth	15 13
9	21	12	9	311, Prisoner	15 8
10	19	8	10	Reel Big Fish, Sell Out	14 13
11	18	16	11	Forest For The Trees, Dream	14 10
12	17	10	12	Fleetwood Mac, Silver Springs	13 11
13	16	11	13	Live, Turn My Head	13 16
14	16	11	14	The Mighty Mighty Bosstones, The Rascal King	13 14
15	14	8	15	Adam Sandler, The Lonesome Kicker	13 7
16	14	9	16	Talk Show, Hello Hello	12 10
17	14	9	17	Filter & The Crystal Method, (Can't You) Trip Like I Do	11 10
18	13	11	18	Tool, Aenema	10 10
19	13	12	19	Oasis, D' You Know What I Mean?	10 13
20	12	9	20	Beck, Jack-Ass	9 13
21	12	10	21	Verve, Bitter Sweet Symphony	9 8
22	12	10	22	The Verve Pipe, Villains	8 12
23	12	10	23	Sublime, What I Got	8 4
24	12	10	24	Jamiroquai, Virtual Insanity	8 15
25	10	5	25	Jimmie's Chicken Shack, High	8 7
26	10	6	26	Our Lady Peace, Superman's Dead	7 5
27	9	6	27	No Doubt, Don't Speak	7 13
28	9	6	28	Jewel, You Were Meant For Me	6 16
29	8	15	29	Jamiroquai, Alright	6 8
30	7	7	30	No Doubt, Just A Girl	5 2
	7	5	31	Beck, Devil's Haircut	5 3
	5	1	32	Fiona Apple, Sleep To Dream	5 1
			33	Sister Hazel, All For You	5 7
			34	MXPX, Chick Magnet	5 3
			35	The Offspring, The Meaning Of Life	5 6
			36	Jon Bon Jovi, Janie, Don't Take Your Love To Town	5 4
			37	Beastie Boys, Sabotage	4 1
			38	Squirrel Nut Zippers, Put A Lid On It	4 5
			39	Third Eye Blind, Semi-Charmed Life	4 1
			40	Lauren Christy, Breed	4 8

## TRIPLE-A

INCREASE  
IN PLAYS

<b>JACKSON BROWNE • The Next Voice You Hear (ELEKTRA/EEG)</b>	<b>+52</b>
WRLT +14, KINK +8, KMTT +6, KGSR +6, KPIG +5, KFOG +4, WXRK +3, WXRK +2, KXPT +1, WHPT +1	
<b>SHAWN COLVIN • You And The Mona Lisa (COLUMBIA)</b>	<b>+39</b>
WKOC +12, WHPT +11, KKZN +4, WTTS +4, KINK +3, KMTT +3, WBOS +2, KGSR +1, KBCO +1, WXRK +1	
<b>BEHAN JOHNSON • World Keeps Spinning (RCA)</b>	<b>+36</b>
WXLE +9, CIDR +8, WNCS +8, WRLT +5, WHPT +5, WBOS +3, KTCZ +2	
<b>PAULA COLE • I Don't Want To Wait (IMAGO/WARNER BROS.)</b>	<b>+32</b>
KXPT +6, WVRV +5, WXRK +5, WRLT +4, WKOC +4, WHPT +4, WJBY +3, CIDR +2, KGSR +2, KINK +1	
<b>JEN TRYNNIN • Getaway (WARNER BROS.)</b>	<b>+30</b>
WKOC +10, WHPT +9, WJBY +6, KINK +4, KMTT +4, WXRK +2, WRLT +1, WXLE +1	
<b>TEXAS • Say What You Want (MERCURY)</b>	<b>+27</b>
WXLE +13, WVRV +8, WXRK +6, KMTT +3, WJBY +1	
<b>TONIC • If You Could Only See (POLYDOR/A&amp;M)</b>	<b>+26</b>
KBCO +18, WHPT +5, WVRV +4, WXLE +3, WDOD +2, WKOC +2	
<b>FREDDY JONES BAND • Wonder (CAPRICORN/MERCURY)</b>	<b>+25</b>
WMAX +11, WKOC +11, KKZN +4, WXRK +4, WJBY +3, KGSR +3, WDOD +2, WNCS +2, WHPT +1	
<b>BLUES TRAVELER • Most Precarious (A&amp;M)</b>	<b>+24</b>
KMTT +15, CIDR +10, WXLE +9, KINK +5, WXRK +4, WRLT +3, WDOD +2, WMAX +2, WKOC +2, WHPT +2	
<b>COLLECTIVE SOUL • Blame (ATLANTIC)</b>	<b>+22</b>
WDOD +9, WBOS +9, WTTS +4, WXRK +1	
<b>THE SUNDAYS • Summertime (DGC/GEFFEN)</b>	<b>+22</b>
WRLT +6, WMAX +4, KGSR +4, WJBY +3, WXLE +3, WHPT +3, WNCS +3, KTCZ +2, WDOD +1, KINK +1	





Playlists compiled by Broadcast Data Systems' Radio Track service. Songs ranked by number of plays in monitored week. Playlists are listed in order of TBA weekly count, beginning with the highest-ranking station. Charts are updated twice weekly following the release of the Spring and Fall Arbitron surveys. The number of stations shown each week varies depending upon space.

Grid of 24 radio station playlists including KLOS, WYSP, WRXC, WMMR, KQRS, WWDC, WRIF, WFBQ, WAAF, KEGL, WKLS, KTXQ, WMMS, WRQC, KSHE, WZTA, KSJO, WIYY, WEBN, KISW, WHJY, WXTB, WONE, and KBPI. Each station's playlist includes song titles, artist names, and a 'TW LW' ranking column.





POWER PLAYLISTS



AIRPLAY Monitor

For Week Ending Sept. 14, 1997

Playlists supplied by Broadcast Data Systems' Radio Track service. Songs ranked by number of plays in monitored week. Playlists are listed in order of TSS weekly count, beginning with the highest-ranking station. Counts are updated twice weekly following the release of the Spring and Fall Arbitron surveys. The number of stations shown each week varies depending on airspace.

KUFO Portland PD: Dave Numme APD: Al Scott. Table with 30 rows of song titles and station numbers.

WDHA Morristown, NJ PD: Lenny Bloch MD: Terrie Carr. Table with 30 rows of song titles and station numbers.

KRRQ Sacramento SM: Curtiss Johnson APD: Pat Martin. Table with 30 rows of song titles and station numbers.

WROQ Greenville PD: Ken Carson APD/MD: K.C. Carson. Table with 30 rows of song titles and station numbers.

KATT Oklahoma City PD: Chris Baker MD: Jake Daniels. Table with 30 rows of song titles and station numbers.

KXXP Minneapolis PD: Wade Linder APD/MD: Bill Jones. Table with 30 rows of song titles and station numbers.

KDKB Phoenix OM: Tim Maranville MD: Tracy Lea. Table with 30 rows of song titles and station numbers.

WLVQ Columbus PD: Greg Ausham. Table with 30 rows of song titles and station numbers.

WNOR Norfolk PD: Harvey Kojan APD/MD: Tim Parker. Table with 30 rows of song titles and station numbers.

WCKW New Orleans GM: Sid Levett. Table with 30 rows of song titles and station numbers.

WTFX Louisville OM: Michael Lee PD: Future Bob. Table with 30 rows of song titles and station numbers.

WTUE Dayton OM: Tom Carroll PD: Chris Geisen. Table with 30 rows of song titles and station numbers.



Fleetwood Mac

"The Chain" Add Date: 9/23

From Their New Platinum Plus Album: THE DANC

- Lindsey Buckingham Already On: WFBQ WCKW WBLM WKLT Mick Fleetwood KSHE KEZO WPLR KQDS Christine McVie KLOL KLPX WAPL WCLG John McVie WEZX KLAQ WXKE and more Stevie Nicks

www.RepriseRec.com © 1997 Reprise Records



Green Day Hitchin' A Ride

The first single from Nimrod

- (17) - (7) Active Rock Monitor 720x (+206) (24) - (17) Mainstream Rock Monitor 850x (+253) (12) - (7) Modern Rock Monitor 1756x (+271) Nimrod In Stores 10/14

MMI Broadcast Data Systems logo and text: Playlist supplied by Broadcast Data Systems...

KYYS Kansas City PD: Jeff McMurry MD: Slacker. Playlist with 30 items and TW/LW columns.

WEGR Memphis PD: Drake Hall MD: Zeke Logan. Playlist with 30 items and TW/LW columns.

WCMF Rochester OM: Harry Jacobs MD: Dave Kane. Playlist with 30 items and TW/LW columns.

WIOT Toledo OM/PD: Darrin Arriens APD: Don Davis. Playlist with 30 items and TW/LW columns.

WFYV Jacksonville PD: David Moore APD/MD: Charlie Waters. Playlist with 30 items and TW/LW columns.

KLAQ El Paso PD/MD: "Magic" Mike Ramsey. Playlist with 30 items and TW/LW columns.

WKLQ Grand Rapids OM: Tony Gates MD: Mark Feurie. Playlist with 30 items and TW/LW columns.

WPLR New Haven PD: John Griffin MD: Pam Landry. Playlist with 30 items and TW/LW columns.

WXRA Greensboro PD: Tim Satterfield APD: Marcia Gan. Playlist with 30 items and TW/LW columns.

WBLM Portland, ME PD: Herb Ivy MD: Brian James. Playlist with 30 items and TW/LW columns.

KMJX Little Rock PD: Tom Wood MD: Jimmy Edwards. Playlist with 30 items and TW/LW columns.

KEZO Omaha OM: Doug Sorensen MD: Allison Steele. Playlist with 30 items and TW/LW columns.

WZZO Allentown PD: Robin Lee MD: Keith Moyer. Playlist with 30 items and TW/LW columns.

WAPL Green Bay PD: Randy Hawke. Playlist with 30 items and TW/LW columns.

KCAL San Bernardino OM: Rick Shaw MD: MJ Matthews. Playlist with 30 items and TW/LW columns.

WROV Roanoke PD: Buzz Casey MD: Bryan Shaw. Playlist with 30 items and TW/LW columns.

KMOD Tulsa PD: Phil Stone MD: Rob Hurt. Playlist with 30 items and TW/LW columns.

KLBJ Austin OM: Jeff Carrol MD: Loris Lowe. Playlist with 30 items and TW/LW columns.

WKQQ Lexington PD: Tony Tilford MD: Brad Hart. Playlist with 30 items and TW/LW columns.

KBER Salt Lake City PD: Randy Rose MD: Chris Haggin. Playlist with 30 items and TW/LW columns.

WTPA Harrisburg PD: Chris James APD/MD: Dina Wagner. Playlist with 30 items and TW/LW columns.

WAQX Syracuse PD: John McCrae APD/MD: Dave Frisina. Playlist with 30 items and TW/LW columns.

KLPX Tucson OM: Larry Miles MD: Charlie Morris. Playlist with 30 items and TW/LW columns.

WZMT Wilkes Barre PD/MD: Aaron Roberts. Playlist with 30 items and TW/LW columns.



POWER PLAYLISTS

For Week Ending September 14, 1997



Playlists supplied by Broadcast Data Systems' Radio Track service. Songs ranked by number of plays in monitoring week. Playlists are listed in order of TBA weekly count, beginning with the highest-counting stations. Counts are updated twice yearly following the release of the Spring and Fall Arbitron surveys. The number of stations shown each week varies depending upon space.

Grid of 48 radio station playlists including WRXL, KRZR, KFRQ, WKLC, KGGO, KRZZ, KILO, KOMP, KZRR, WTAK, WEZZ, WRXK, KAZR, WSFL, WNCN, KNCN, KRAB, WWRK, WSTZ, WZZR, WZAT, WARQ, WMFS, and WIZN. Each station listing includes a table of song titles and their corresponding week ending counts.



★ ★ ★ **AIRPOWER** ★ ★ ★  
(Minimum 800 detections for the first time)

**GREEN DAY** 850/253  
*Hitchin' A Ride (Reprise)*

Total Stations: 63/Chart Move: 24-17  
Heavy (21+ plays): 11 KAZR, KILO, KISS, KRAB, WAAF, WMFS, WMMS, WWDC, WXR, WZAT, WZTA  
Medium (14-20): 21 KATT, KBER, KEGL, KIOZ, KQRC, KRXQ, KRZR, KSJO, KTUX, KTXQ, KUFO, KUPD, WAVF, WBZX, WJRR, WLZR, WNOR, WRIF, WTFX, WTPA, WYSP  
Light (Under 14): 31  
New Airplay This Week: 14 KATT, KBPI, KEZO, KLAQ, WARQ, WCKW, WHJY, WIXV, WKLQ, WLZR, WMMR, WXTB, WZMT, WZZO

**AIRPOWER BOUND**

Total Plays/Gain

**CREED** 799/113  
*My Own Prison (Wind-up)*

Total Stations: 60/Chart Move: 21-18  
Heavy (21+ plays): 6 KTUX, KEGL, KILO, KTUX, WCCC, WLZR, WNOR, WXTB, WZAT, WZTA  
Medium (14-20): 13 KIOZ, KLB, KQRC, KRXQ, KRZR, WAAF, WIYY, WKLQ, WMFS, WTFX, WVRK, WXR, WYSP  
Light (Under 14): 37  
New Airplay This Week: 5 KBPI, KISS, KOMP, KRAD, WXR

**CRY OF LOVE** 648/-25  
*Sugarcane (Columbia)*

Total Stations: 58/Chart Move: 22-23  
Heavy (21+): 6 KTUX, WDHA, WKLS, WMMR, WRDU, WZAT  
Medium (14-20): 12 KEGL, KLB, KLPX, KOMP, KRZR, WIOT, WIXV, WKLC, WRXL, WAFX, WZZO  
Light (Under 14): 40

**STIR** 629/80  
*One Angel (Aware/Capitol)*

Total Stations: 53/Chart Move: 27-24  
Heavy (21+): 5 KTUX, KYYS, WAPL, WXR, WZAT  
Medium (14-20): 11 KDKB, KEZO, KLB, KMOD, KQRC, KRZR, KSHE, WRDU, WSTZ, WTUE, WZZO  
Light (Under 14): 37  
New Airplay This Week: 5 KBPI, KLPX, WCCC, WJRR, WONE

**JIMMIE'S CHICKEN SHACK** 560/36  
*High (Rocket/A&M)*

Total Stations: 48/Chart Move: 30-26  
Heavy (21+): 5 KILO, WMFS, WWDC, WXR, WZAT  
Medium (14-20): 10 KAZR, KBER, KBPI, KEGL, KQRC, KRXQ, KTUX, WAAF, WCCC, WNOR  
Light (Under 14): 33  
New Airplay This Week: 3 KTXQ, KOXP, WKLQ

**SMASH MOUTH** 532/95  
*Walkin' On The Sun (Interscope)*

Total Stations: 42/Chart Move: 33-27  
Heavy (21+): 12 KEGL, KILO, KRAB, KRAD, KRXQ, KTUX, WARQ, WAVF, WKLQ, WWDC, WXR, WZAT  
Medium (14-20): 2 WXTB, WZTA  
Light (Under 14): 28  
New Airplay This Week: 6 KLAQ, KQRS, WCKW, WEBN, WMMS, WVRK

**KENNY WAYNE SHEPHERD BAND** 518/283  
*Slow Ride (Revolution)*

Total Stations: 55/Chart Move: Debut 29  
Heavy (21+): 2 KTUX, WIXV

Medium (14-20): 11 KATT, KDKB, KISS, WDHA, WIMZ, WKLC, WRDU, WROQ, WTPA, WAFX, WZZO  
Light (Under 14): 42  
New Airplay This Week: 22 KATT, KEZO, KISS, KLB, KMJX, KOMP, KQRC, KRZR, KXUS, WAPL, WBZX, WIOT, WKLQ, WNCD, WRDU, WRIF, WRXK, WRXL, WTPA, WTUE, WZMT, WZZR

**EVERCLEAR** 518/176  
*Everything To Everyone (Capitol)*

Total Stations: 51/Chart Move: Debut 30  
Heavy (21+): 3 KAZR, KUFO, WXR  
Medium (14-20): 14 KEGL, KISS, KRAD, KRZR, KSJO, KTUX, KTXQ, WAAF, WAVF, WWDC, WXTB, WZAT, WZMT, WZTA  
Light (Under 14): 34  
New Airplay This Week: 14 KBER, KBPI, KEZO, KLB, KUPD, WAPL, WIXV, WMFS, WNCD, WPLR, WRXK, WRIF, WTUE, WZAT

**COLLECTIVE SOUL** 504/297  
*Blame (Atlantic)*

Total Stations: 43/Chart Move: Debut 31  
Heavy (21+): 5 KTUX, WAPL, WRDU, WTKA, WZAT  
Medium (14-20): 10 KEGL, KEZO, KLB, KRZR, KSJO, WDHA, WIXV, WKLC, WTFX, WTPA  
Light (Under 14): 28  
New Airplay This Week: 20 KDKB, KEGL, KEZO, KFRQ, KISS, KLPX, KTAL, KYYS, WBZX, WEZ, WJRR, WKLQ, WKQQ, WLZR, WNCD, WRXK, WRXK, WTUE, WZAT, WZTA

**JONNY LANG** 494/-22  
*Hit The Ground Running (A&M)*

Total Stations: 47/Chart Move: 31-33  
Heavy (21+): 1 WDHA  
Medium (14-20): 12 KLAQ, KLB, KLPX, KMOD, KOMP, WAPL, WIXV, WKLC, WPLR, WRXL, WZZO, WZZR  
Light (Under 14): 34  
New Airplay This Week: 1 WFBQ

**THE NIXONS** 443/67  
*The Fall (MCA)*

Total Stations: 38/Chart Move: 36-36  
Heavy (21+): 3 WAAF, WXR, WZAT  
Medium (14-20): 10 KEGL, KLB, KQRC, KRAD, KRZR, KZRR, WAPL, WIXV, WTUE, WZTA  
Light (Under 14): 25  
New Airplay This Week: 3 KFRQ, KNCN, WNOR

**MOTLEY CRUE** 416/49  
*Beauty (Elektra/EEG)*

Total Stations: 46/Chart Move: 37-37  
Heavy (21+): 3 KUPD, KOXP, WZAT  
Medium (14-20): 4 KEGL, KRZR, KTUX, WZMT  
Light (Under 14): 39  
New Airplay This Week: 1 WAAF

**COOL FOR AUGUST** 371/61  
*Trials (Warner Bros.)*

Total Stations: 40/Chart Move: Debut 38  
Heavy (21+): 2 KTUX, WAAF  
Medium (14-20): 8 KISS, KLB, KRAD, KRZR, KUPD, WXR, WZAT, WZTA  
Light (Under 14): 30  
New Airplay This Week: 4 WARQ, WCCC, WSTZ, WXR

**COUNTING CROWS** 364/-42  
*Have You Seen Me Lately? (DGC/Geffen)*

Total Stations: 35/Chart Move: 35-39  
Heavy (21+): 3 WMMR, WONE, WXR

Medium (14-20): 9 KEZO, KTUX, WCCC, WEZ, WKLC, WMMS, WTPA, WYSP, WZZR  
Light (Under 14): 23

**CHART BOUND**

Total Plays/Gain

**BLUES TRAVELER** 348/37  
*Most Precarious (A&M)*

Total Stations: 31  
Heavy (21+): 2 KDKB, KTYD  
Medium (14-20): 7 KLAQ, KLB, WARQ, WBAB, WKLC, WKLQ, WROQ  
Light (Under 14): 22  
New Airplay This Week: 6 KGGO, WAPL, WEZ, WMMR, WROV, WZZO

**JOHN FOGERTY** 345/36  
*Blueboy (Warner Bros.)*

Total Stations: 30  
Heavy (21+): 0  
Medium (14-20): 11 KMOD, KTAL, KTYD, KYYS, WAPL, WBAB, WEGR, WIZN, WPLR, WROQ, WZZR  
Light (Under 14): 19  
New Airplay This Week: 3 WEZ, WPYX, WSFL

**CHRIS DUARTE GROUP** 336/28  
*Cleopatra (Silvertone)*

Total Stations: 34  
Heavy (21+): 1 WIXV  
Medium (14-20): 7 KBER, KEZO, KLB, KLPX, KMOD, KRZR, KTUX  
Light (Under 14): 26  
New Airplay This Week: 4 WLQ, WRXK, WRXL, WZZO

**SEVEN MARY THREE** 323/45  
*Lucky (Mammoth/Atlantic)*

Total Stations: 30  
Heavy (21+): 3 KRAD, KTUX, WZAT  
Medium (14-20): 6 KEGL, KTYD, WAAF, WNOR, WROV, WXTB  
Light (Under 14): 21  
New Airplay This Week: 1 KEGL

**CELLOPHANE** 309/57  
*Down (Virgin)*

Total Stations: 40  
Heavy (21+): 0  
Medium (14-20): 4 WAAF, WMFS, WNOR, WZTA  
Light (Under 14): 36  
New Airplay This Week: 2 WKLQ, WMFS

**FILTER AND THE CRYSTAL METHOD** 287/21  
*(Can't You) Trip Like I Do (Immortal/Epic)*

Total Stations: 30  
Heavy (21+): 5 KRAD, WAAF, WMFS, WXR, WZAT  
Medium (14-20): 1 KEGL  
Light (Under 14): 24  
New Airplay This Week: 1 WXTB

**THIRD EYE BLIND** 275/61  
*Graduate (Elektra/EEG)*

Total Stations: 32  
Heavy (21+): 1 WXR  
Medium (14-20): 7 KBPI, KILO, KRXQ, KRZR, KUFO, WKLQ, WWDC  
Light (Under 14): 24  
New Airplay This Week: 3 KISS, KYYS, WMMS

**MEGADETH** 241/48  
*Almost Honest (Capitol)*

Total Stations: 27  
Heavy (21+): 3 KUPD, WBZX, WMFS  
Medium (14-20): 6 KILO, KRXQ, KOXP, WNOR, WYSP, WZAT  
Light (Under 14): 18  
New Airplay This Week: 2 WIYY, WZAT

**HEADSWIM** 203/68  
*Hype (550 Music)*

Total Stations: 28  
Heavy (21+): 0

**MOST NEW STATIONS**

No. Of Stations

<b>KENNY WAYNE SHEPHERD BAND</b> <i>Slow Ride (Revolution)</i>	22
<b>COLLECTIVE SOUL</b> <i>Blame (Atlantic)</i>	20
<b>EVERCLEAR</b> <i>Everything To Everyone (Capitol)</i>	14
<b>GREEN DAY</b> <i>Hitchin' A Ride (Reprise)</i>	14
<b>BLUES TRAVELER</b> <i>Most Precarious (A&amp;M)</i>	6
<b>HEADSWIM</b> <i>Hype (550 Music)</i>	6
<b>SMASH MOUTH</b> <i>Walkin' On The Sun (Interscope)</i>	6
<b>THE WALLFLOWERS</b> <i>Three Marlenas (Interscope)</i>	6

Medium (14-20): 4 KILO, KLB, WKLO, WZAT  
Light (Under 14): 24  
New Airplay This Week: 6 KQRC, WARQ, WBZX, WCCC, WRXL, WZAT

**THE REFRESHMENTS** 177/65  
*Good Year (Mercury)*

Total Stations: 25  
Heavy (21+): 0  
Medium (14-20): 4 KLB, KRAD, WIXV, WXR  
Light (Under 14): 21  
New Airplay This Week: 5 WIOT, WRIF, WSTZ, WWDC, WXR

**THE TEA PARTY** 170/49  
*Temptation (Atlantic)*

Total Stations: 24  
Heavy (21+): 0  
Medium (14-20): 3 KISS, KOXP, WAAF  
Light (Under 14): 21  
New Airplay This Week: 4 KRZR, WAAF, WARQ, WRIF

**PRODIGY** 153/7  
*Breathe (XL Mute/Maverick/Warner Bros.)*

Total Stations: 22  
Heavy (21+): 0  
Medium (14-20): 3 KRAD, WKLQ, WZAT  
Light (Under 14): 19  
New Airplay This Week: 1 WXTB

**FREDDY JONES BAND** 145/30  
*Wonder (Capricorn/Mercury)*

Total Stations: 16  
Heavy (21+): 0  
Medium (14-20): 3 KLOS, KLPX, KTYD  
Light (Under 14): 13  
New Airplay This Week: 3 WCMF, WLQ, WPLR

**THE HONEYRODS** 136/8  
*Love Bee (Capricorn/Mercury)*

Total Stations: 14  
Heavy (21+): 2 WAAF, WKLS  
Medium (14-20): 1 WAVF  
Light (Under 14): 11

**VIBROLUSH** 125/8  
*No Regrets (Iguana/Interscope)*

Total Stations: 19  
Heavy (21+): 0  
Medium (14-20): 2 KQRC, WKLO  
Light (Under 14): 17  
New Airplay This Week: 1 WRQC

**VALLEJO** 107/2  
*Shining Sun (I.M.I./TVT)*

Total Stations: 11  
Heavy (21+): 1 KNCN  
Medium (14-20): 1 WKLQ  
Light (Under 14): 9  
New Airplay This Week: 1 WVRK

**PAUL MCCARTNEY** 105/4  
*Young Boy (MPL/Capitol)*

Total Stations: 12  
Heavy (21+): 0  
Medium (14-20): 4 KMJX, KMOD, KTYD, WAPL  
Light (Under 14): 8  
New Airplay This Week: 3 KLAQ, WFBQ, WPYX

★ **DREAM THEATER** 100/35  
*Burning My Soul (EastWest/EEG)*

Total Stations: 22  
Heavy (21+): 1 KILO  
Medium (14-20): 1 KOXP  
Light (Under 14): 20  
New Airplay This Week: 2 KQRC, KSJO

**DOG'S EYE VIEW** 96/5  
*Homecoming Parade (Columbia)*

Total Stations: 13  
Heavy (21+): 0  
Medium (14-20): 3 KRAD, WEBN, WWDC  
Light (Under 14): 10

**CHRONIC FUTURE** 95/-4  
*Insomniac (Beyond Music)*

Total Stations: 15  
Heavy (21+): 0  
Medium (14-20): 0  
Light (Under 14): 15

**JARS OF CLAY** 87/1  
*Crazy Times (Essential/Silvertone)*

Total Stations: 13  
Heavy (21+): 0  
Medium (14-20): 2 KTUX, KTXQ  
Light (Under 14): 11

**SOAK** 86/1  
*Shutter Gut (RainMaker/Interscope)*

Total Stations: 10  
Heavy (21+): 0  
Medium (14-20): 2 KEGL, KRXQ  
Light (Under 14): 8

★ **THE WALLFLOWERS** 83/68  
*Three Marlenas (Interscope)*

Total Stations: 12  
Heavy (21+): 1 KYYS  
Medium (14-20): 0  
Light (Under 14): 11  
New Airplay This Week: 6 KEZO, KLPX, KYYS, WLQ, WTPA, WTUE

**AEROSMITH** 83/14  
*Taste Of India (Columbia)*

Total Stations: 10  
Heavy (21+): 2 WLZR, WRDU  
Medium (14-20): 1 KILO  
Light (Under 14): 7



SONG ACTIVITY REPORTS

For Week Ending September 14, 1997

MM Broadcast Data Systems
Detailed song tracking information for the last 3 weeks for all songs showing increased play this week. Total plays and gain do not include video play. Markets listed in order of population.

Grid of song activity reports for AEROSMITH, COLLECTIVE SOUL, CREED, DAYS OF THE NEW, and EVERCLEAR. Each entry includes station, chart move, and play data.

Grid of song activity reports for FOO FIGHTERS, GOO GOO DOLLS, GREEN DAY, SAMMY HAGAR, and JIMMIE'S CHICKEN SHACK. Each entry includes station, chart move, and play data.



SONG ACTIVITY REPORTS



For Week Ending September 14, 1997

Detailed song tracking information for the last 5 weeks for all songs showing increased play this week. Total plays and gains do not include video play. Markets listed in order of population.

Grid of song activity reports for albums: MIGHTY JOE PLUM, THE NIXONS, THE OFFSPRING, OUR LADY PEACE, THE ROLLING STONES. Includes columns for station, song title, and activity metrics.

Grid of song activity reports for albums: KENNY WAYNE SHEPHERD BAND, SMASH MOUTH, STIR, TALK SHOW, TONIC. Includes columns for station, song title, and activity metrics.



THIS WEEK	LAST WEEK	WKS. ON CHART	HERITAGE ROCK		DETECTIONS		
			TITLE/LABEL/PROMOTION LABEL	ARTIST	TW	LW	
			<b>★★★★ No. 1 ★★★★★</b>				
1	2	2	ANYBODY SEEN MY BABY VIRGIN 1 week at No. 1	THE ROLLING STONES	1175	947	
2	1	20	PINK COLUMBIA	AEROSMITH	1038	993	
3	3	9	MARCHING TO MARS THE TRACK FACTORY/MCA	SAMMY HAGAR	804	769	
4	5	25	IF YOU COULD ONLY SEE POLYDOR/A&M	TONIC	704	652	
5	4	13	SOUL OF LOVE VELVEL	PAUL RODGERS	655	715	
6	6	29	PUSH LAVA/ATLANTIC	MATCHBOX 20	613	645	
7	12	7	TOUCH, PEEL AND STAND OUTPOST/GEFFEN	DAYS OF THE NEW	583	495	
8	7	12	TURN MY HEAD RADIOACTIVE/MCA	LIVE	566	603	
9	13	9	SUGARCANE COLUMBIA	CRY OF LOVE	477	461	
10	10	19	LISTEN ATLANTIC	COLLECTIVE SOUL	475	521	
11	8	20	THE DIFFERENCE INTERSCOPE	THE WALLFLOWERS	472	552	
12	9	7	CONGO ATLANTIC	GENESIS	472	523	
13	11	16	CAROLINA BLUES A&M	BLUES TRAVELER	468	510	
14	14	8	HIT THE GROUND RUNNING A&M	JONNY LANG	426	443	
15	15	9	LIVE THROUGH THIS (FIFTEEN STORIES) ATLANTIC	MIGHTY JOE PLUM	422	437	
16	16	8	ONE ANGEL AWARE/CAPITOL	STIR	377	329	
			<b>★★★★ AIRPOWER ★★★★★</b>				
17	20	3	BLUEBOY WARNER BROS.	JOHN FOGERTY	328	295	
			<b>★★★★ AIRPOWER ★★★★★</b>				
18	34	2	SLOW RIDE REVOLUTION	KENNY WAYNE SHEPHERD BAND	322	174	
19	19	10	LAZY EYE WARNER SUNSET/WARNER BROS.	GOO GOO DOLLS	298	298	
20	17	17	TRUST CAPITOL	MEGADETH	283	325	
21	NEW ▶		BLAME ATLANTIC	COLLECTIVE SOUL	269	110	
22	18	11	BRING IT ON CMC INTERNATIONAL	LYNYRD SKYNYRD	263	320	
23	26	5	MOST PRECARIOUS A&M	BLUES TRAVELER	261	223	
24	22	6	HAVE YOU SEEN ME LATELY? DGC/GEFFEN	COUNTING CROWS	251	269	
25	21	11	LOCKED & LOADED EPIC	JACKYL	245	283	
26	28	4	HELLO HELLO ATLANTIC	TALK SHOW	237	212	
27	23	18	WALKING IN A HURRICANE WARNER BROS.	JOHN FOGERTY	223	259	
28	24	7	SILVER SPRINGS REPRISE	FLEETWOOD MAC	222	254	
29	31	3	CLEOPATRA SILVERTONE	CHRIS DUARTE GROUP	219	196	
30	27	15	BLEEDING ME ELEKTRA/EEG	METALLICA	218	215	
31	32	9	SUPERMAN'S DEAD COLUMBIA	OUR LADY PEACE	211	191	
32	25	15	FADE TO BLUE RAZOR & TIE	38 SPECIAL	208	245	
33	29	5	MY NEIGHBORHOOD EUREKA/DISCOVERY	COREY STEVENS	199	209	
34	35	18	ONE MORE TIME EUREKA/DISCOVERY	COREY STEVENS	174	169	
35	38	4	ALL FOR YOU UNIVERSAL	SISTER HAZEL	173	160	
36	NEW ▶		I CHOOSE COLUMBIA	THE OFFSPRING	169	129	
37	30	7	VILLAINS RCA	THE VERVE PIPE	167	199	
38	NEW ▶		MY OWN PRISON WIND-UP	CREED	164	135	
39	39	21	LITTLE WHITE LIE THE TRACK FACTORY/MCA	SAMMY HAGAR	159	158	
40	37	13	SEMI-CHARMED LIFE ELEKTRA/EEG	THIRD EYE BLIND	155	162	

Records showing an increase in detections over the previous week, regardless of chart movement. A record which has been on the chart for more than 20 weeks will not receive a bullet, even if it registers an increase in detections. Airpower awarded to those records which attain 400 detections for the first time. If two records are tied in number of plays, the record being played on more stations is placed first. Records below the top 20 are removed from the chart after 26 weeks.

THIS WEEK	LAST WEEK	WKS. ON CHART	ACTIVE ROCK		DETECTIONS		
			TITLE/LABEL/PROMOTION LABEL	ARTIST	TW	LW	
			<b>★★★★ No. 1 ★★★★★</b>				
1	1	11	TOUCH, PEEL AND STAND OUTPOST/GEFFEN 4 weeks at No. 1	DAYS OF THE NEW	1217	1102	
2	2	18	TRUST CAPITOL	MEGADETH	863	855	
3	4	10	I CHOOSE COLUMBIA	THE OFFSPRING	850	784	
4	3	11	PINK COLUMBIA	AEROSMITH	848	819	
5	7	7	EVERLONG ROSWELL/CAPITOL	FOO FIGHTERS	824	702	
6	5	10	LAZY EYE WARNER SUNSET/WARNER BROS.	GOO GOO DOLLS	728	724	
7	17	3	HITCHIN' A RIDE REPRISE	GREEN DAY	720	514	
8	11	4	HELLO HELLO ATLANTIC	TALK SHOW	717	623	
9	6	17	BLEEDING ME ELEKTRA/EEG	METALLICA	694	702	
10	10	17	SUPERMAN'S DEAD COLUMBIA	OUR LADY PEACE	690	648	
11	13	11	LIVE THROUGH THIS (FIFTEEN STORIES) ATLANTIC	MIGHTY JOE PLUM	643	604	
12	15	6	MY OWN PRISON WIND-UP	CREED	635	551	
13	9	18	LAST CUP OF SORROW SLASH/REPRISE	FAITH NO MORE	624	675	
14	12	25	IF YOU COULD ONLY SEE POLYDOR/A&M	TONIC	607	622	
15	14	8	MARCHING TO MARS THE TRACK FACTORY/MCA	SAMMY HAGAR	587	581	
16	8	12	TURN MY HEAD RADIOACTIVE/MCA	LIVE	566	684	
17	16	31	GONE AWAY COLUMBIA	THE OFFSPRING	498	525	
18	21	9	HIGH ROCKET/A&M	JIMMIE'S CHICKEN SHACK	480	446	
19	19	13	AENEMA ZOO/VOLCANO	TOOL	468	487	
			<b>★★★★ AIRPOWER ★★★★★</b>				
20	27	2	EVERYTHING TO EVERYONE CAPITOL	EVERCLEAR	440	316	
21	18	19	LISTEN ATLANTIC	COLLECTIVE SOUL	440	495	
			<b>★★★★ AIRPOWER ★★★★★</b>				
22	23	5	WALKIN' ON THE SUN INTERSCOPE	SMASH MOUTH	419	359	
23	20	7	FLY LAVA/ATLANTIC	SUGAR RAY	396	451	
24	24	2	ANYBODY SEEN MY BABY VIRGIN	THE ROLLING STONES	393	344	
25	28	2	THE FALL MCA	THE NIXONS	333	289	
26	22	17	BATON ROUGE MCA	THE NIXONS	319	374	
27	33	4	BEAUTY ELEKTRA/EEG	MOTLEY CRUE	299	257	
28	25	21	MONKEY WRENCH ROSWELL/CAPITOL	FOO FIGHTERS	295	338	
29	35	4	TRIALS WARNER BROS.	COOL FOR AUGUST	273	238	
30	34	6	(CAN'T YOU) TRIP LIKE I DO IMMORTAL/EPIC	FILTER AND THE CRYSTAL METHOD	262	243	
31	37	6	ONE ANGEL AWARE/CAPITOL	STIR	252	220	
32	39	2	DOWN VIRGIN	CELLOPHANE	249	208	
33	NEW ▶		LUCKY MAMMOTH/ATLANTIC	SEVEN MARY THREE	245	203	
34	26	8	SHUTTERBUG MINTY FRESH/OUTPOST/GEFFEN	VERUCA SALT	243	321	
35	30	9	D' YOU KNOW WHAT I MEAN? EPIC	OASIS	240	265	
36	40	3	GRADUATE ELEKTRA/EEG	THIRD EYE BLIND	235	205	
37	NEW ▶		BLAME ATLANTIC	COLLECTIVE SOUL	235	97	
38	NEW ▶		ALMOST HONEST CAPITOL	MEGADETH	233	190	
39	31	20	THE DIFFERENCE INTERSCOPE	THE WALLFLOWERS	207	264	
40	32	10	LOCKED & LOADED EPIC	JACKYL	205	257	

Records showing an increase in detections over the previous week, regardless of chart movement. A record which has been on the chart for more than 20 weeks will not receive a bullet, even if it registers an increase in detections. Airpower awarded to those records which attain 300 detections for the first time. If two records are tied in number of plays, the record being played on more stations is placed first. Records below the top 20 are removed from the chart after 26 weeks.

**GREATEST GAINERS**

INCREASE IN PLAYS

<b>THE ROLLING STONES • Anybody Seen My Baby (VIRGIN)</b>	+228
KYYS +22, KCAL +20, WAPL +14, KDKB +14, WRDU +13, WZZO +12, KTAL +12, KOMP +12, KLPK +9, WPLR +9	
<b>COLLECTIVE SOUL • Blame (ATLANTIC)</b>	+159
WRDU +15, WAK +14, WRXK +13, WIXV +12, KEZO +11, WKLC +10, WNCB +9, KDKB +9, WTFX +8, KFRQ +8	
<b>KENNY WAYNE SHEPHERD BAND • Slow Ride (REVOLUTION)</b>	+148
WRDU +15, WRXK +12, WRXL +12, KXUS +9, WIMZ +9, WZZO +8, KOMP +8, WNCB +7, WZZR +7	
<b>DAYS OF THE NEW • Touch, Peel And Stand (OUTPOST/GEFFEN)</b>	+88
WDHA +14, WRXL +12, WZZO +11, KEZO +8, WVRK +7, KZRR +7, WAQX +6, WEZX +6, KDKB +5, WAPL +4	
<b>EVERCLEAR • Everything To Everyone (CAPITOL)</b>	+52
WAPL +10, KEZO +8, WIXV +7, WPLR +6, WSTZ +4, WCCC +4, WBAB +4, WDHA +3, KYYS +3, WZZO +2	
<b>TONIC • If You Could Only See (POLYDOR/A&amp;M)</b>	+52
WAQX +12, WROV +8, WPYX +7, WKLS +7, WCKW +6, WLQV +6, WIXV +4, WDHA +3, KFRQ +3, WZZO +2	
<b>THE WALLFLOWERS • Three Marlenas (INTERSCOPE)</b>	+52
KYYS +24, KLPK +9, KEZO +7, WLQV +5, WCKW +3, WFBQ +2, WDHA +1, WZZO +1	

**GREATEST GAINERS**

INCREASE IN PLAYS

<b>GREEN DAY • Hitchin' A Ride (REPRISE)</b>	+206
KATT +18, WZAT +15, WLZR +13, KRAB +11, KBPI +11, WMFS +10, WKLQ +10, WJRR +9, WRCX +9, KTUX +6	
<b>COLLECTIVE SOUL • Blame (ATLANTIC)</b>	+138
WZAT +21, KEGL +16, KTUX +15, WRCX +12, WTPA +12, WJRR +11, KRZR +10, KISS +10, WTUE +9, WBZX +8	
<b>KENNY WAYNE SHEPHERD BAND • Slow Ride (REVOLUTION)</b>	+135
KATT +17, KISS +16, WTPA +14, KLBJ +13, KQRC +12, WTUE +9, WIOT +8, KRZR +8, WKLQ +8, WRIF +8	
<b>EVERCLEAR • Everything To Everyone (CAPITOL)</b>	+124
WZAT +16, WAVF +11, KEGL +11, WMFS +10, KBPI +10, KRZR +8, WZTA +7, KTUX +7, KAZR +7, KRAD +6	
<b>FOO FIGHTERS • Everlong (ROSWELL/CAPITOL)</b>	+122
WRQC +21, KRAB +15, WTPA +11, WNOR +11, WARQ +10, KSJO +7, KRXQ +7, KBER +6, KTYD +5, KTUX +5	





# POWER PLAYLISTS™

**Broadcast Data Systems**  
All Day Programming Services

**AIRPLAY**  
**Monitor**®

For Week Ending  
Sept. 14, 1997

Playlists supplied by Broadcast Data Systems® Radio Track service. Songs ranked by number of plays in monitored week. Playlists are listed in order of TSA weekly compile, beginning with the highest-counting station. Cumulative are updated twice yearly following the release of the Spring and Fall Arbitron surveys. The number of stations at each week varies depending upon space.

KNDD			
Seattle	PD: Phil Manning MD: K m Monroe		
TW	LW		
1	Sugar Ray, Fly	43	46
2	Foos Fighters, Everlong	43	43
3	Beck, Jack-Ass	43	41
4	Sublime, Wrong Way	40	40
5	Sarah McLachlan, Building A Mystery	40	43
6	Smash Mouth, Walkin' On The Sun	40	42
7	Oasis, D' You Know What I Mean?	38	41
8	Everclear, Everything To Everyone	35	20
9	Foos Fighters, Monkey Wrench	24	22
10	The Verve, Bitter Sweet Symphony	23	15
11	Our Lady Peace, Superman's Dead	22	24
12	The Offspring, Gone Away	21	18
13	K's Choice, Not An Addict	21	22
14	Green Day, Hitchin' A Ride	21	25
15	Jamiroqun, Alright	21	19
16	Veruca Salt, Volcano Girls	20	20
17	Sneaker Pimps, G Underground	20	23
18	The Smashing Pumpkins, Eye	19	21
19	Mighty Mighty Bosstones, The Impression	19	18
20	Bhar, Song 2	19	21
21	Catherine Wheel, Delicious	19	21
22	Oasis, Don't Go Away	19	19
23	Mighty Mighty Bosstones, The Rascal King	19	19
24	Third Eye Blind, Semi-Charmed Life	18	17
25	Tonic, If You Could Only See	18	18
26	Prodigy, Breathe	18	20
27	The Sundays, Summertime	18	19
28	Radiohead, Let Down	18	19
29	Beck, The New Pollution	17	18
30	Sublime, Don't Time	17	17

KOME			
San Jose	OM: Ron Nenni PD/MD: Jay Taylor		
TW	LW		
1	Sugar Ray, Fly	39	35
2	Smash Mouth, Walkin' On The Sun	39	40
3	Fiona Apple, Criminal	38	38
4	Green Day, Hitchin' A Ride	36	32
5	Foos Fighters, Everlong	36	34
6	Sublime, Wrong Way	36	38
7	Oasis, Don't Go Away	35	34
8	Everclear, Everything To Everyone	31	32
9	Third Eye Blind, New's It Going To Be	21	37
10	Dance Hall Crashers, Lost Again	28	21
11	Chumbawamba, Tubthumping	28	31
12	Third Eye Blind, Graduate	27	24
13	Oasis, D' You Know What I Mean?	27	24
14	Reel Big Fish, Sell Out	26	22
15	Matchbox 20, Push	26	33
16	Beck, Jack-Ass	26	28
17	Our Lady Peace, Superman's Dead	24	23
18	Sneaker Pimps, G Underground	23	19
19	Mighty Mighty Bosstones, The Rascal King	23	19
20	Tonic, If You Could Only See	22	28
21	Sublime, Wrong Way	20	20
22	Prodigy, Breathe	20	22
23	Blink 182, Dammnit	19	23
24	Sarah McLachlan, Building A Mystery	19	23
25	Forest For The Trees, Dream	19	21
26	Talk Show, Hello Hello	18	20
27	Third Eye Blind, Semi-Charmed Life	17	12
28	311, Prisoner	17	18
29	Foos Fighters, Monkey Wrench	16	7
30	The Offspring, I Choose	16	4

KTBZ			
Houston	PD: Jim Trapp MD: David Sadoff		
TW	LW		
1	Oasis, D' You Know What I Mean?	41	37
2	Smash Mouth, Walkin' On The Sun	40	40
3	Sugar Ray, Fly	40	39
4	Sarah McLachlan, Building A Mystery	39	26
5	Sublime, Wrong Way	38	39
6	Live, Turn My Head	37	39
7	Our Lady Peace, Superman's Dead	31	23
8	Days Of The Week, Touch, Pvel Anc Staud	30	27
9	Seven Mary Three, Lucky	28	31
10	Matchbox 20, 3 AM	27	25
11	Foos Fighters, Everlong	24	21
12	Love Spit Love, Long Time	24	22
13	Teard The Wet Sprocket, Whatever I Fear	23	22
14	Everclear, Everything To Everyone	22	8
15	Isco Goo Dolts, Lazy Eye	21	30
16	The Sundays, Summertime	21	1
17	K's Choice, Not An Addict	20	16
18	Talk Show, Hello Hello	19	17
19	Counting Crows, Have You Seen Me Lately?	19	22
20	Back-O-Wine, My Town	18	19
21	The Verve Pipe, The Fishmen	18	14
22	The Wallflowers, One Headlight	17	18
23	Tanya Denahly, Pretty Deep	16	18
24	Garbage, Only Happy When It Rains	16	12
25	Diablwala, Counting Blue Cars	16	15
26	Reel Big Fish, Sell Out	16	21
27	Depeche Mode, It's No Good	15	14
28	Tonic, If You Could Only See	15	17
29	Artificial Joy Club, Sick & Beautiful	15	17
30	Third Eye Blind, Semi-Charmed Life	15	26

CIMX			
Detroit	Prgm. Mng. Murray Brookshaw PD/MD: Vince Cannova		
TW	LW		
1	Green Day, Hitchin' A Ride	52	52
2	Goldfinger, This Lonely Place	49	52
3	Everclear, Everything To Everyone	49	52
4	Foos Fighters, Everlong	45	42
5	Smash Mouth, Walkin' On The Sun	45	40
6	Sugar Ray, Fly	44	44
7	Fiona Apple, Criminal	40	40
8	Oasis, D' You Know What I Mean?	38	43
9	Mighty Mighty Bosstones, The Rascal King	38	40
10	Sarah McLachlan, Building A Mystery	38	43
11	Brian Van 3000, Drinking In L.A.	35	32
12	Reel Big Fish, Sell Out	30	30
13	Our Lady Peace, Superman's Dead	27	29
14	Beck, Jack-Ass	27	25
15	Talk Show, Hello Hello	26	20
16	Oasis, Don't Go Away	24	15
17	Sublime, Don't Time	23	25
18	Live, Turn My Head	23	21
19	The Sundays, Summertime	23	21
20	Bush, Machinehead	20	15
21	The Verve, Bitter Sweet Symphony	20	14
22	Alano Moricette, Right Through You	19	26
23	Stove Temple Pilets, Plush	18	17
24	K's Choice, Not An Addict	17	15
25	Our Lady Peace, Cumsy	17	20
26	The Smashing Pumpkins, Disarm	17	16
27	Radiohead, Creep	16	16
28	Nine Inch Nails, Hurt	16	15
29	Jewel, Foolish Games	16	13
30	Sublime, Wrong Way	16	17

KPNT			
St. Louis	PD: Allan Fee MD: Adam Potts		
TW	LW		
1	Sugar Ray, Fly	36	33
2	Our Lady Peace, Superman's Dead	35	34
3	Smash Mouth, Walkin' On The Sun	34	33
4	Sarah McLachlan, Building A Mystery	33	34
5	Sir, One Angel	33	33
6	Reel Big Fish, Sell Out	33	34
7	Oasis, D' You Know What I Mean?	33	31
8	Foos Fighters, Everlong	32	32
9	Matchbox 20, Push	31	29
10	Third Eye Blind, Graduate	27	27
11	Talk Show, Hello Hello	27	21
12	Green Day, Hitchin' A Ride	27	20
13	Blair, Song 2	25	35
14	Live, Turn My Head	24	23
15	Everclear, Everything To Everyone	22	24
16	The Offspring, Gone Away	20	16
17	Tonic, If You Could Only See	20	21
18	311, Prisoner	20	12
19	Goo Goo Dolls, Lazy Eye	20	18
20	U2, Last Night On Earth	20	18
21	Beck, Grassy Field	19	28
22	Sublime, Wrong Way	18	19
23	Fiona Apple, Criminal	18	14
24	Beck, Jack-Ass	17	15
25	Mighty Mighty Bosstones, The Rascal King	17	18
26	K's Choice, Not An Addict	16	26
27	Silverchair, Abuse Me	16	15
28	Better Than Ezra, Desperately Wanting	16	15
29	Goldfinger, This Lonely Place	16	21
30	The Wallflowers, One Headlight	16	12

WXDX			
Pittsburgh	PD: Ali Castellini MD: Lenny Diana		
TW	LW		
1	Artificial Joy Club, Sick & Beautiful	30	28
2	Sublime, Wrong Way	30	27
3	Sugar Ray, Fly	30	30
4	Smash Mouth, Walkin' On The Sun	30	30
5	Matchbox 20, Push	30	30
6	Reel Big Fish, Sell Out	29	27
7	Dave Matthews Band, Tripping Billies	29	30
8	Sneaker Pimps, G Underground	27	30
9	Sarah McLachlan, Building A Mystery	27	26
10	The Smashing Pumpkins, The End Is The	25	29
11	Fiona Apple, Criminal	25	26
12	Seven Mary Three, Lucky	25	25
13	Talk Show, Hello Hello	25	28
14	Everclear, Everything To Everyone	24	21
15	Green Day, Hitchin' A Ride	23	19
16	The Verve Pipe, Villains	23	16
17	Our Lady Peace, Superman's Dead	23	15
18	Save Ferris, Come On Eileen	23	26
19	Oasis, D' You Know What I Mean?	23	30
20	Mighty Mighty Bosstones, The Rascal King	23	22
21	Luscious Jackson, Under Your Skin	22	22
22	Counting Crows, Have You Seen Me Lately?	22	27
23	Tonic, If You Could Only See	14	29
24	Foos Fighters, Everlong	14	14
25	Filter & The Crystal Method, (Can't You)	14	12
26	Blues Traveler, Most Precarious	12	14
27	Abra Moore, Four Last Clover	12	26
28	311, Transistor	11	9
29	Sarcast For The Trees, Dream	10	8
30	Radiohead, Let Down	10	11

KEDJ			
Phoenix	PD: Shellie Hart APD/MD: Chris Patyk		
TW	LW		
1	Smash Mouth, Walkin' On The Sun	51	46
2	Blair, Song 2	47	49
3	Third Eye Blind, Graduate	45	39
4	Sugar Ray, Fly	43	45
5	Our Lady Peace, Superman's Dead	36	26
6	Tool, Sirensat	35	35
7	Prodigy, Breathe	34	44
8	Tonic, If You Could Only See	32	21
9	Everclear, Everything To Everyone	30	21
10	Green Day, Hitchin' A Ride	29	15
11	Beck-O-Wine, My Town	28	22
12	Sublime, Wrong Way	25	33
13	K's Choice, A Sound That Only You Can Be	25	16
14	Mighty Mighty Bosstones, The Rascal King	22	19
15	Filter & The Crystal Method, (Can't You)	22	13
16	Dandy Warhols, Not If You Were The Last	21	8
17	Sugar Ray, Fly	20	9
18	The Tea Party, Temptation	19	12
19	Foos Fighters, Monkey Wrench	18	19
20	Dance Hall Crashers, Lost Again	17	11
21	Blink 182, Dammnit	17	14
22	Sublime, Don't Time	16	11
23	Goldfinger, This Lonely Place	16	17
24	Mighty Mighty Bosstones, The Impression	15	13
25	Sublime, What I Got	15	13
26	The Offspring, I Choose	15	0
27	Sneaker Pimps, G Underground	12	15
28	Third Eye Blind, Semi-Charmed Life	12	12
29	Soel Coaghting, Super Bon Bon	12	6
30	Catherine Wheel, Delicious	12	6

WLIR			
Long Island	PD: Jeff Levine Mus. Coord.: Lynda Lopez		
TW	LW		
1	Chumbawamba, Tubthumping	45	37
2	Matchbox 20, Push	42	49
3	Sneaker Pimps, G Underground	41	40
4	Sugar Ray, Fly	39	35
5	The Sundays, Summertime	39	7
6	Third Eye Blind, Semi-Charmed Life	37	40
7	Bleached, Bleached	35	9
8	Sarah McLachlan, Building A Mystery	27	23
9	Mighty Mighty Bosstones, The Impression	27	21
10	Dave Matthews Band, Crash Into Me	27	21
11	DMC, How Bizarre	26	23
12	The Wallflowers, The Difference	26	25
13	The Verve Pipe, The Freshmen	25	22
14	The Wallflowers, One Headlight	23	22
15	Shawn Colvin, Sunny Came Home	23	21
16	Sublime, Wrong Way	23	19
17	Reel Big Fish, Sell Out	22	15
18	Smash Mouth, Walkin' On The Sun	22	15
19	Luscious Jackson, Naked Eye	20	20
20	Fiona Apple, Criminal	20	14
21	Sublime, Sinteria	19	20
22	D2, Staring At The Sun	18	18
23	Savage Garden, I Want You	18	16
24	Oasis, Don't Go Away	18	15
25	White Town, You Woman	17	17
26	Duncan Sheik, Barely Breathing	16	11
27	Paula Cole, Where Have All The Cowboys	16	18
28	Sheryl Crow, A Change Would Do You Good	16	25
29	Paula Cole, I Don't Want To Wait	15	0
30	Sublime, What I Got	13	16

XTRA			
San Diego	PD: Bryan Schock MD: Chris Muckley		
TW	LW		
1	Smash Mouth, Walkin' On The Sun	34	31
2	Foos Fighters, Everlong	32	31
3	311, Prisoner	32	31
4	Mighty Mighty Bosstones, The Rascal King	31	31
5	Sublime, Don't Time	31	32
6	Korn, A.D.I.L.A.S.	31	29
7	Squirrel Nut Zippers, Put A Lid On It	30	30
8	Oasis, D' You Know What I Mean?	30	19
9	Marcy Playground, Sex & Candy	29	24
10	Chumbawamba, Tubthumping	19	13
11	Everclear, Everything To Everyone	18	17
12	Less Than Jake, Dogman	18	21
13	The Verve, Bitter Sweet Symphony	18	11
14	Derran Bureau, Electric Barbarella	17	5
15	London Suede, Beautiful Ones	17	18
16	Forest For The Trees, Dream	17	18
17	Green Day, Hitchin' A Ride	17	16
18	Talk Show, Hello Hello	17	14
19	Save Ferris, Come On Eileen	16	17
20	Ben Harper, Faded	16	16
21	Dandy Warhols, Not If You Were The Last	15	16
22	Soel Coaghting, Soft Serve	15	14
23	Social Distortion, Don't Drag Me Down	15	17
24	Sarah McLachlan, Building A Mystery	14	16
25	Olive, You're Not Alone	14	4
26	Fiona Apple, Criminal	14	15
27	Beck, Jack-Ass	12	18
28	Radiohead, Let Down	12	5
29	Sugar Ray, Fly	11	9
30	Depeche Mode, Useless	10	14

WMRQ			
Hartford	PD: Jay Beau Jones MD: Dave Hill		
TW	LW		
1	Sugar Ray, Fly	46	46
2	Tonic, If You Could Only See	44	45
3	Matchbox 20, Push	44	46
4	Sneaker Pimps, G Underground	42	43
5	Third Eye Blind, Graduate	32	46
6	Sublime, Wrong Way	32	16
7	K's Choice, Not An Addict	31	42
8	Reel Big Fish, Sell Out	31	11
9	Smash Mouth, Walkin' On The Sun	31	31
10	Smash Mouth, Walkin' On The Sun	25	27
11	Everclear, Everything To Everyone	25	28
12	Mighty Mighty Bosstones, The Rascal King	25	31
13	Foos Fighters, Everlong	25	26
14	Jars Of Clay, Crazy Times	23	26
15	Collective Soul, Listen	22	18
16	Oasis, D' You Know What I Mean?	21	23
17	Oasis, Don't Go Away	21	

POWER PLAYLISTS

For Week Ending September 14, 1997



Playlists supplied by Broadcast Data Systems' Radio Track service. Songs ranked by number of plays in monitoring week. Playlists are listed in order of TBA weekly cumes, beginning with the highest-cume station. Cumes are updated twice yearly following the release of the Spring and Fall Arbitron surveys. The number of stations shown each week varies depending upon space.

KXPX Denver PD: Gary Schoenwetter APD/MD: Eric Schmidt. Top 30 playlist including 'Blues Traveler, Most Precarious' and 'Live, Turn My Head'.

WRZX Indianapolis PD: Scott Jameson MD: Michael Young. Top 30 playlist including 'Reel Big Fish, Sell Out' and 'Sublime, Wrong Way'.

KWOD Sacramento PD: Ron Bunce. Top 30 playlist including 'Smash Mouth, Walkin' On The Sun' and 'Matchbox 20, Push'.

KZON Phoenix PD: Paul Peterson MD: Kevin Mannion. Top 30 playlist including 'Fiona Apple, Criminal' and 'The Sundays, Summertime'.

XHRM San Diego OM/PD: Jay Isbell MD: Brynn Capella. Top 30 playlist including 'Smash Mouth, Walkin' On The Sun' and 'Third Eye Blind, Graduate'.

WQBK Albany PD: Dan Binder MD: Kelli McNamara. Top 30 playlist including 'Sugar Ray, Fly' and 'Our Lady Peace, Superman's Dead'.

WEND Charlotte PD: Jack Daniel MD: Rick Brewer. Top 30 playlist including 'Tonic, If You Could Only See' and 'Fiona Apple, Sleep To Dream'.

WQXA Harrisburg PD: John Moschitta MD: Scott McFadden. Top 30 playlist including 'Smash Mouth, Walkin' On The Sun' and 'Our Lady Peace, Superman's Dead'.

WLUM Milwaukee PD: Tommy Wilde APD: Chuck Summers. Top 30 playlist including 'Dave Matthews Band, Crash Into Me' and 'Matchbox 20, Push'.

WNVE Rochester PD/MD: Erick Anderson. Top 30 playlist including 'Smash Mouth, Walkin' On The Sun' and 'Sublime, Wrong Way'.

WFNX Boston MD: Laurie Gail. Top 30 playlist including 'Chumbawamba, Tubthumping' and 'Smash Mouth, Walkin' On The Sun'.

WEDG Buffalo PD: John Hager MD: Rich Wall. Top 30 playlist including 'Smash Mouth, Walkin' On The Sun' and 'Our Lady Peace, Superman's Dead'.

KCCX Kansas City PD: Jon Anthony MD: Jason Justice. Top 30 playlist including 'Sugar Ray, Fly' and 'Blues Traveler, Most Precarious'.

WGRD Grand Rapids MD: Margot Smith. Top 30 playlist including 'Smash Mouth, Walkin' On The Sun' and 'Our Lady Peace, Superman's Dead'.

KNRK Portland, OR PD/MD: Mark Hamilton. Top 30 playlist including 'Everclear, Everything To Everyone' and 'Smash Mouth, Walkin' On The Sun'.

KENZ Salt Lake City PD: Bruce Jones MD: Dom Casual. Top 30 playlist including 'Teardrop, What I Want From Me' and 'Blues Traveler, Most Precarious'.

KXRK Salt Lake City PD: Mike Summers MD: Sean Ziebarth. Top 30 playlist including 'The Verve, Bitter Sweet Symphony' and 'Green Day, Hitchin' A Ride'.

WPBZ West Palm Beach PD: John O'Connell MD: Robert English. Top 30 playlist including 'Sneaker Pimps, 6 Underground' and 'Beck, Jack-Ass'.

WAQZ Cincinnati PD/MD: Matt Harris APD: Sterling Schiessler. Top 30 playlist including 'Sugar Ray, Fly' and 'Sarah McLachlan, Building A Mystery'.

WROX Norfolk PD: Perry Stone MD: Al Mitchell. Top 30 playlist including 'Sublime, Wrong Way' and 'Oasis, D' You Know What I Mean?'.

KTCL Denver PD: John Hayes. Top 30 playlist including 'Chumbawamba, Tubthumping' and 'Apollo 440, Ain't Talkin' 'bout Dub'.

KXTE Las Vegas PD: Mike Stern MD: Chris Ripley. Top 30 playlist including 'Everclear, Everything To Everyone' and 'Talk Show, Hello Hello'.

KNRX Oklahoma City PD: Mike McCoy MD: Geno Pearson. Top 30 playlist including 'Sublime, Wrong Way' and 'Sarah McLachlan, Building A Mystery'.

WDGE Providence PD: Brent Petersen MD: John Allers. Top 30 playlist including 'Smash Mouth, Walkin' On The Sun' and 'Our Lady Peace, Superman's Dead'.

POWER PLAYLISTS

For Week Ending September 14, 1997



Grid of 48 radio station playlists (KMYZ, KKND, KCXX, KGDE, KROX, KEDG, WXEG, WPLA, WCYY, KFRR, WWCD, WBZU, KLZR, KAEP, KPOI, KTEG, KKDM, KFMA, KICT, WRXQ, WKRL, WXZZ, WEQX, WXNR) with columns for station name, PD, MD, and song lists with airplay counts.



AIRPOWER

(Minimum 1,100 detections for the first time)

Total Plays/Gain	Total Plays/Gain	Total Plays/Gain
<b>EVERCLEAR</b> 1492/372 <i>Everything To Everyone (Capitol)</i> Total Stations: 74/Chart Move: 21-13 Heavy (30+ plays): 11 CIMX, KCHZ, KEDJ, KEGE, KLZR, KNKR, KOME, KXRK, KXTE, WBCN, WBZU Medium (15-29): 45 KCCX, KDGE, KEDG, KFMA, KFTE, KGDE, KHTY, KICT, KITS, KJEE, KKDM, KLYY, KNDD, KNRX, KPNT, KROQ, KROX, KTBZ, KTEG, KWOD, WBRU, WBTZ, WCY, WEDG, WEND, WENZ, WEQX, WFNX, WHFS, WKQX, WKRL, WMRQ, WNNX, WPLT, WPLY, WQXA, WROX, WRXQ, WRXR, XTRA Light (Under 15): 18 New Airplay This Week: 14 KCHZ, KENZ, KFRR, KFTE, KNKR, KXPK, WAQZ, WCY, WGRD, WROX, WRXQ, WRXR, WWCD, XHRM	<b>CHUMBAWAMBA</b> 1325/450 <i>Tubthumping (Republic/Universal)</i> Total Stations: 66/Chart Move: 27-14 Heavy (30+): 15 KDGE, KITS, KJEE, KLYY, KROQ, KROX, KTCL, KTOZ, KWOD, WBRU, WFNX, WKDF, WKQX, WLIR, XHRM Medium (15-29): 28 KCHZ, KEDG, KFMA, KLZR, KNKR, KOME, KTEG, KXRK, KZON, WAQZ, WBCN, WBTZ, WBZU, WENZ, WGRD, WHFS, WLUM, WNNX, WNVE, WPBZ, WPLY, WRXQ, WRXR, WWCD, WXEG, WXNR, WRXK, XTRA Light (Under 15): 23 New Airplay This Week: 18 CFNY, CIMX, KLZR, KMYZ, KNDD, KNRX, KXRK, WBTZ, WBZU, WCY, WKRL, WMRQ, WNVE, WPBZ, WROX, WRXQ, WRXR, WXNR	<b>THE SUNDAYS</b> 1112/208 <i>Summertime (DGC/Geffen)</i> Total Stations: 69/Chart Move: 25-21 Heavy (30+): 5 KZON, WLIR, WNNX, WPLY, XHRM Medium (15-29): 35 CIMX, KCXX, KDGE, KENZ, KFMA, KFTE, KJEE, KLYY, KNDD, KNKR, KNRX, KROQ, KROX, KTBZ, KTCL, KTEG, KTOZ, KWOD, KXRK, WAQZ, WBCN, WBTZ, WEDG, WEND, WENZ, WFNX, WGRD, WHFS, WKDF, WKQX, WPLA, WPLT, WQBK, WRXQ, WXEG Light (Under 15): 29 New Airplay This Week: 2 KTBZ, WEND

AIRPOWER BOUND

**FOREST FOR THE TREES** 1064/58  
*Dream (DreamWorks/Geffen)*  
 Total Stations: 68/Chart Move: 23-22  
 Heavy (30+ plays): 4 KENZ, KFTE, KWOD, WBZU  
 Medium (15-29): 33 CFNY, KCHZ, KDGE, KEDG, KEGE, KHTY, KJEE, KNKR, KNRX, KOME, KPOI, KROQ, KTCL, KTOZ, KXRK, WAQZ, WBTZ, WCY, WENZ, WEQX, WFNX, WKQX, WLUM, WNNX, WPLT, WPLY, WROX, WRXQ, WRXR, WWCD, WXEG, XHRM, XTRA  
 Light (Under 15): 31  
 New Airplay This Week: 4 KROX, KZON, WBRU, WXNR

**OASIS** 962/410  
*Don't Go Away (Epic)*  
 Total Stations: 59/Chart Move: Debut 24  
 Heavy (30+): 5 KKDM, KOME, KXRK, WEQX, XTRA  
 Medium (15-29): 30 CFNY, CIMX, KAEP, KCHZ, KCXX, KEGE, KENZ, KITS, KKND, KLYY, KLZR, KNDD, KROQ, KWOD, KXP, WAQZ, WBRU, WBTZ, WBZU, WDGE, WEND, WENZ, WHFS, WKQX, WLIR, WMRQ, WNNX, WPLT, WPLY, WRXR  
 Light (Under 15): 24  
 New Airplay This Week: 18 CFNY, KCCX, KDGE, KEDG, KGDE, KNRX, KPNT, KXPK, WBRU, WBTZ, WBZU, WEND, WFNX, WGRD, WLUM, WNNX, WRXQ, XHRM

**311** 929/90  
*Prisoner (Capricorn/Mercury)*  
 Total Stations: 63/Chart Move: 29-25  
 Heavy (30+): 3 KLZR, KXRK, XTRA  
 Medium (15-29): 29 CFNY, CIMX, KCCX, KCXX, KENZ, KFMA, KFTE, KITS, KJEE, KKDM, KOME, KPNT, KTCL, KTOZ, KXTE, WBCN, WBRU, WBTZ, WCY, WDGE, WFNX, WHFS, WNNX, WNVE, WROX, WRXQ, WXNR, WRXR, XHRM  
 Light (Under 15): 31  
 New Airplay This Week: 2 WCY, WXNR

**GOLDFINGER** 909/201  
*This Lonely Place (Mojo/Universal)*  
 Total Stations: 60/Chart Move: 37-26  
 Heavy (30+): 4 CIMX, KCXX, KXRK, WKQX  
 Medium (15-29): 26 KCCX, KDGE, KEDJ, KFTE, KGDE, KLZR, KNKR, KNRX, KPNT, KTCL, KTEG, KTOZ, KWOD, WBTZ, WBZU, WCY, WEDG, WEND, WENZ, WGRD, WNNX, WPBZ, WPLY, WQXA, WRXR, WXNR  
 Light (Under 15): 30  
 New Airplay This Week: 9 KDGE, KEDG, KHTY, KKDM, WAQZ, WCY, WKDF, WLUM, WNVE

**BLUES TRAVELER** 884/61  
*Most Precarious (A&M)*  
 Total Stations: 51/Chart Move: 28-27  
 Heavy (30+): 8 KAEP, KXPK, WBZU, WEQX, WKDF, WQBK, WRXR, WXNR  
 Medium (15-29): 20 KENZ, KKDM, KLYY, KNKR, KROX, KTEG, KTOZ, KZON, WAQZ, WDGE, WENZ, WGRD, WMRQ, WNNX, WPLT, WPLY, WQXA, WRXQ, WXEG, XHRM  
 Light (Under 15): 23  
 New Airplay This Week: 3 WBRU, WWCD, WXZZ

**FILTER AND THE CRYSTAL METHOD** 817/21  
*(Can't You) Trip Like I Do (Immortal/Epic)*  
 Total Stations: 68/Chart Move: 32-29  
 Heavy (30+): 2 KEDG, WBZU  
 Medium (15-29): 20 KEDJ, KFTE, KKDM, KKND, KLZR, KNKR, KTOZ, KXRK, KXTE, WBTZ, WCY, WENZ, WFNX, WKRL, WNNX, WPLA, WROX, WRXQ, WXNR, WRXR  
 Light (Under 15): 46  
 New Airplay This Week: 1 KTCL

**LOVE SPIT LOVE** 618/41  
*Long Long Time (Maverick/Warner Bros.)*  
 Total Stations: 57/Chart Move: 40-33  
 Heavy (30+): 1 WBZU  
 Medium (15-29): 17 CFNY, KFTE, KNRX, KROX, KTBZ, KTCL, KTEG, KTOZ, WBCN, WCY, WENZ, WEQX, WKRL, WPLA, WPLY, WWCD, XHRM  
 Light (Under 15): 39  
 New Airplay This Week: 4 WCY, WNNX, WROX, WXDX

**SEVEN MARY THREE** 599/114  
*Lucky (Mammoth/Atlantic)*  
 Total Stations: 38/Chart Move: Debut 34  
 Heavy (30+): 3 KFTE, WEQX, WLUM  
 Medium (15-29): 15 KKND, KMYZ, KNRX, KROX, KTBZ, KXRK, WDGE, WEND, WENZ, WPBZ, WQBK, WQXA, WRXQ, WRXZ, WXDX  
 Light (Under 15): 20  
 New Airplay This Week: 8 CFNY, KDGE, KNDD, KPNT, WBRU, WEDG, WNVE, WXZZ

**DAYS OF THE NEW** 532/195  
*Touch, Peel And Stand (Outpost/Geffen)*  
 Total Stations: 30/Chart Move: Debut 39  
 Heavy (30+): 6 KEDG, KNRX, KTBZ, KXTE, WBZU, WQXA  
 Medium (15-29): 9 KICT, KKDM, KKND, WBRU, WDGE, WKRL, WPBZ, WRXZ, WRXR  
 Light (Under 15): 15  
 New Airplay This Week: 11 CFNY, KEDG, KFTE, KGDE, KKDM, WBRU, WCY, WDGE, WEDG, WQBK, WRXR

CHART BOUND

**SUBLIME** 490/8  
*Doin' Time (Gasoline Alley/MCA)*  
 Total Stations: 31  
 Heavy (30+): 5 KHTY, KLYY, KOME, XHRM, XTRA  
 Medium (15-29): 13 CIMX, KCXX, KEDG, KEDJ, KJEE, KLZR, KNDD, KROQ, KTCL, KXTE, WFNX, WNNX, WRXR  
 Light (Under 15): 13  
 New Airplay This Week: 2 KEDG, KLZR

**SISTER HAZEL** 482/16  
*All For You (Universal)*  
 Total Stations: 23  
 Heavy (30+): 10 KAEP, KCHZ, KKDM, WGRD, WKDF, WLIR, WLUM, WPLT, WPLY, WXNR  
 Medium (15-29): 4 KDGE, KROX, KXPK, WQBK  
 Light (Under 15): 9  
 New Airplay This Week: 1 KNRX

**JARS OF CLAY** 439/65  
*Crazy Times (Essential/Silvertone)*  
 Total Stations: 34  
 Heavy (30+): 4 KCHZ, KCXX, KTOZ, KXRK  
 Medium (15-29): 10 KAEP, KENZ, KICT, KNRX, KXPK, WEQX, WMRQ, WQXA, WXEG, XHRM  
 Light (Under 15): 20  
 New Airplay This Week: 3 KFTE, KNRX, WAQZ

**SAVE FERRIS** 417/97  
*Come On Eileen (Starpool/Epic)*  
 Total Stations: 35  
 Heavy (30+): 1 KLYY  
 Medium (15-29): 11 KCXX, KEDG, KHTY, KLZR, KPOI, KROQ, KROX, WLUM, WXDX, XHRM, XTRA  
 Light (Under 15): 23  
 New Airplay This Week: 4 KITS, KLZR, WQBK, WQXA

**THE OFFSPRING** 379/152  
*I Choose (Columbia)*  
 Total Stations: 30  
 Heavy (30+): 1 KROQ  
 Medium (15-29): 10 KEDG, KEDJ, KEGE, KICT, KKDM, KKND, KOME, KXTE, WNNX, WRXR  
 Light (Under 15): 19  
 New Airplay This Week: 8 KEDG, KEDJ, KMYZ, KOME, KPNT, WEDG, WRXZ, WRXR

**CATHERINE WHEEL** 374/16  
*Delicious (Mercury)*  
 Total Stations: 38  
 Heavy (30+): 0  
 Medium (15-29): 12 KKND, KLZR, KNDD, KNKR, KXRK, KXTE, WBRU, WEDG, WENZ, WFNX, WKRL, XHRM  
 Light (Under 15): 26  
 New Airplay This Week: 2 WBCN, WPBZ

**DANCE HALL CRASHERS** 340/36  
*Lost Again (510/MCA)*  
 Total Stations: 33  
 Heavy (30+): 0  
 Medium (15-29): 9 KCXX, KEDJ, KHTY, KJEE, KOME, KROX, WPBZ, WXEG, XHRM  
 Light (Under 15): 24  
 New Airplay This Week: 2 KLZR, KNRX

**JAMIROQUAI** 326/61  
*Airight (WORK)*  
 Total Stations: 51  
 Heavy (30+): 1 XHRM  
 Medium (15-29): 9 KFMA, KITS, KJEE, KNDD, KTOZ, KXRK, WBRU, WBTZ, WPLY  
 Light (Under 15): 41  
 New Airplay This Week: 3 KITS, WPLY, WXZZ

**BLUR** 324/42  
*M.O.R. (Food/Parlophone/Virgin)*  
 Total Stations: 34  
 Heavy (30+): 1 KXRK  
 Medium (15-29): 7 KFTE, KLZR, KNRX, WBTZ, WBZU, WENZ, WKQX  
 Light (Under 15): 26  
 New Airplay This Week: 1 WCY

**THE REFRESHMENTS** 321/57  
*Good Year (Mercury)*  
 Total Stations: 34  
 Heavy (30+): 0  
 Medium (15-29): 8 KCXX, KFMA, KNKR, KROX, WDGE, WRXR, WXEG, WXNR  
 Light (Under 15): 26  
 New Airplay This Week: 5 CFNY, KFMA, WPBZ, WQXA, XTRA

**TANYA DONELLY** 295/46  
*Pretty Deep (Reprise)*  
 Total Stations: 35  
 Heavy (30+): 0  
 Medium (15-29): 12 KCCX, KJEE, KLYY, KTBZ, WBCN, WBRU, WBTZ, WDGE, WEDG, WENZ, WEQX, WROX  
 Light (Under 15): 23  
 New Airplay This Week: 2 KFTE, WROX

**BLINK 182** 291/54  
*Dammit (Growing Up) (Cargo/MCA)*  
 Total Stations: 31  
 Heavy (30+): 1 KFMA  
 Medium (15-29): 7 KEDJ, KHTY, KJEE, KOME, KROQ, KXRK, KXTE  
 Light (Under 15): 23  
 New Airplay This Week: 2 KJEE, KTCL

**SQUIRREL NUT ZIPPER** 290/33  
*Put A Lid On It (Mammoth)*  
 Total Stations: 38  
 Heavy (30+): 1 XTRA

MOST NEW STATIONS

No. Of Stations
<b>CHUMBAWAMBA</b> 18 <i>Tubthumping (Republic/Universal)</i>
<b>OASIS</b> 18 <i>Don't Go Away (Epic)</i>
<b>EVERCLEAR</b> 14 <i>Everything To Everyone (Capitol)</i>
<b>LONGPIGS</b> 12 <i>On And On (Mother/Island)</i>
<b>DAYS OF THE NEW</b> 11 <i>Touch, Peel And Stand (Outpost/Geffen)</i>

Medium (15-29): 5 KJEE, KNKR, KXRK, WBTZ, WENZ  
 Light (Under 15): 32  
 New Airplay This Week: 2 KROQ, WCY

**LONGPIGS** 270/163  
*On And On (Mother/Island)*  
 Total Stations: 34  
 Heavy (30+): 0  
 Medium (15-29): 6 KCCX, KITS, KROQ, KXRK, WBZU, WFNX  
 Light (Under 15): 28  
 New Airplay This Week: 12 KEDG, KNKR, KOME, KPNT, KTCL, KTEG, KXRK, WBZU, WEDG, WEQX, WMRQ, WRXR

**MATCHBOX 20** 250/30  
*3 AM (Lava/Atlantic)*  
 Total Stations: 17  
 Heavy (30+): 1 WNNX  
 Medium (15-29): 8 KDGE, KKND, KTBZ, KWOD, WGRD, WKDF, WLUM, WWCD  
 Light (Under 15): 8  
 New Airplay This Week: 5 KFTE, KLYY, KPNT, KXPK, WKDF

**THE HONEYRODS** 210/17  
*Love Bee (Capricorn/Mercury)*  
 Total Stations: 26  
 Heavy (30+): 0  
 Medium (15-29): 3 KFTE, WROX, WRXR  
 Light (Under 15): 23  
 New Airplay This Week: 1 WXZZ

**JEWEL** 207/9  
*Foolish Games (Atlantic)*  
 Total Stations: 11  
 Heavy (30+): 3 KFRR, KKDM, WAQZ  
 Medium (15-29): 3 CIMX, KAEP, WPLT  
 Light (Under 15): 5  
 New Airplay This Week: 1 KEDJ

**LESS THAN JAKE** 197/-9  
*Dopeman (Capitol)*  
 Total Stations: 23  
 Heavy (30+): 0  
 Medium (15-29): 7 KNKR, KOME, KTCL, KWOD, KXTE, WPBZ, XTRA  
 Light (Under 15): 16  
 New Airplay This Week: 1 KHTY

**THIRD EYE BLIND** 195/25  
*How's It Going To Be (Elektra/EEG)*  
 Total Stations: 20  
 Heavy (30+): 2 KOME, KWOD  
 Medium (15-29): 6 KITS, KLYY, KROQ, WHFS, WKQX, WPLT  
 Light (Under 15): 12

**THE VERVE** 188/67  
*Bitter Sweet Symphony (Hut/Virgin)*  
 Total Stations: 24  
 Heavy (30+): 1 KXRK  
 Medium (15-29): 4 CIMX, KITS, KNDD, XTRA  
 Light (Under 15): 19  
 New Airplay This Week: 4 KLZR, KTCL, WQBK, XHRM

**COLLECTIVE SOUL** 183/111  
*Blame (Atlantic)*  
 Total Stations: 15  
 Heavy (30+): 0  
 Medium (15-29): 7 KAEP, KENZ, KFTE, KNRX, WEND, WLUM, WXNR  
 Light (Under 15): 8  
 New Airplay This Week: 7 CFNY, KENZ, KTOZ, KZON, WGRD, WQXA, WXNR

**HOOVERPHONIC** 180/1  
*2 Wicky (Epic)*  
 Total Stations: 21  
 Heavy (30+): 0  
 Medium (15-29): 4 KFMA, KJEE, WKQX, XHRM  
 Light (Under 15): 17  
 New Airplay This Week: 3 KNRX, WENZ, WFNX

**MIGHTY JOE PLUM** 177/44  
*Live Through This (Fifteen Stories) (Atlantic)*  
 Total Stations: 11  
 Heavy (30+): 3 WBZU, WKDF, WPLA  
 Medium (15-29): 3 KCXX, KEGE, KZON  
 Light (Under 15): 5  
 New Airplay This Week: 1 KEGE

**JIMMIE'S CHICKEN SHACK** 174/18  
*High (Rocket/A&M)*  
 Total Stations: 17  
 Heavy (30+): 0  
 Medium (15-29): 5 KFTE, KPOI, WBZU, WPLA, WQXA  
 Light (Under 15): 12  
 New Airplay This Week: 2 KEGE, WDGE

**VERUCA SALT** 173/0  
*The Morning Sad (Outpost/Geffen)*  
 Total Stations: 12  
 Heavy (30+): 1 WXEG  
 Medium (15-29): 5 KNRX, WENZ, WPBZ, WQBK, WQXA  
 Light (Under 15): 6  
 New Airplay This Week: 1 WXZZ

**DURAN DURAN** 159/119  
*Electric Barbarella (Capitol)*  
 Total Stations: 28  
 Heavy (30+): 0  
 Medium (15-29): 4 KITS, KNKR, XHRM, XTRA  
 Light (Under 15): 24  
 New Airplay This Week: 4 CIMX, KCHZ, KITS, XTRA

**LAZLO BANE** 152/20  
*Overkill (Aimo Sounds/Geffen)*  
 Total Stations: 12  
 Heavy (30+): 1 KCHZ  
 Medium (15-29): 3 KZON, WPBZ, WPLA  
 Light (Under 15): 8  
 New Airplay This Week: 1 KFTE

**JUNKSTER** 144/69  
*Mr. Blue (RCA)*  
 Total Stations: 23  
 Heavy (30+): 0  
 Medium (15-29): 1 WENZ  
 Light (Under 15): 20  
 New Airplay This Week: 6 KCXX, KJEE, KROX, KZON, WKRL, WNNX

**MOLOKO** 130/3  
*Fun For Me (Echo/Warner Bros.)*  
 Total Stations: 10  
 Heavy (30+): 2 KHTY, XHRM  
 Medium (15-29): 1 KROX  
 Light (Under 15): 7

**ECHO & THE BUNNYMEN** 128/36  
*Nothing Lasts Forever (London/Island)*  
 Total Stations: 14  
 Heavy (30+): 1 KXRK  
 Medium (15-29): 3 WEQX, WPLT, XHRM  
 Light (Under 15): 10  
 New Airplay This Week: 2 WEDG, WEQX

**PAULA COLE** 128/45  
*I Don't Want To Wait (Imago/Warner Bros.)*  
 Total Stations: 8  
 Heavy (30+): 1 WPLT  
 Medium (15-29): 4 KXPK, KZON, WAQZ, WLIR  
 Light (Under 15): 3  
 New Airplay This Week: 1 WLIR

**DUBSTAR** 127/7  
*Stars (Polydor/A&M)*  
 Total Stations: 12  
 Heavy (30+): 1 KXRK  
 Medium (15-29): 2 KFTE, KLYY  
 Light (Under 15): 9  
 New Airplay This Week: 1 KJEE



SONG ACTIVITY REPORTS

For Week Ending September 14, 1997



Detailed song tracking information for the last 3 weeks for all songs showing increased play this week. Total plays and gain do not include video play. Markets listed in order of population.

Grid of song activity reports for artists: 311 Prisoner (Capricorn/Mercury), FIONA APPLE Criminal (Clean Slate/WORK), BLUES TRAVELER Most Precarious (A&M), CATHERINE WHEEL Delicious (Mercury), CHUMBAWAMBA Tubthumping (Republic/Universal). Each entry includes station codes, play counts, and chart movements.

Grid of song activity reports for artists: DANCE HALL CRASHERS Last Again (510/MCA), DAYS OF THE NEW Touch, Peel And Stand (Outpost/Geffen), EVERCLEAR Everything To Everyone (Capitol), FILTER AND THE CRYSTAL METHOD (Can't You Trip Like I Do (Immortal/Epic), FOO FIGHTERS Everlong (Roswell/Capitol).

Grid of song activity reports for artists: FOREST FOR THE TREES Dream (DreamWorks/Geffen), GOLDFINGER This Lonely Place (Mojo/Universal), GREEN DAY Hitchin' A Ride (Reprise), JARS OF CLAY Crazy Times (Essential/Silvertone), OVE SPIT LOVE Long Long Time (Maverick/Warner Bros.).

SONG ACTIVITY REPORTS

For Week Ending September 14, 1997



Detailed song tracking information for the last 3 weeks for all songs showing increased play this week. Total plays and gain do not include video play. Markets listed in order of population.

THE MIGHTY MIGHTY BOSSTONES

Table with columns: Station, Airplay, Total Plays, Gain, Chart Move. Includes sub-section 'The Rascal King (Big Rig/Mercury)'.

OASIS

Table with columns: Station, Airplay, Total Plays, Gain, Chart Move. Includes sub-section 'Don't Go Away (Epic)'.

THE OFFSPRING

Table with columns: Station, Airplay, Total Plays, Gain, Chart Move. Includes sub-section 'I Choose (Columbia)'.

OUR LADY PEACE

Table with columns: Station, Airplay, Total Plays, Gain, Chart Move. Includes sub-section 'Superman's Dead (Columbia)'.

REEL BIG FISH

Table with columns: Station, Airplay, Total Plays, Gain, Chart Move. Includes sub-section 'Sell Out (Mojo/Universal)'.

SAVE FERRIS

Table with columns: Station, Airplay, Total Plays, Gain, Chart Move. Includes sub-section 'Come On Eileen (Starpool/Epic)'.

SEVEN MARY THREE

Table with columns: Station, Airplay, Total Plays, Gain, Chart Move. Includes sub-section 'Lucky (Mammoth/Atlantic)'.

SISTER HAZEL

Table with columns: Station, Airplay, Total Plays, Gain, Chart Move. Includes sub-section 'All For You (Universal)'.

SMASH MOUTH

Table with columns: Station, Airplay, Total Plays, Gain, Chart Move. Includes sub-section 'Walkin' On The Sun (Interscope)'.

SUBLIME

Table with columns: Station, Airplay, Total Plays, Gain, Chart Move. Includes sub-section 'Wrong Way (Gasoline Alley/MCA)'.

SUBLIME

Table with columns: Station, Airplay, Total Plays, Gain, Chart Move. Includes sub-section 'Doin' Time (Gasoline Alley/MCA)'.

SUGAR RAY

Table with columns: Station, Airplay, Total Plays, Gain, Chart Move. Includes sub-section 'Fly (Lava/Atlantic)'.

THE SUNDAYS

Table with columns: Station, Airplay, Total Plays, Gain, Chart Move. Includes sub-section 'Summertime (DGC/Geffen)'.

TALK SHOW

Table with columns: Station, Airplay, Total Plays, Gain, Chart Move. Includes sub-section 'Hello Hello (Atlantic)'.

THIRD EYE BLIND

Table with columns: Station, Airplay, Total Plays, Gain, Chart Move. Includes sub-section 'Graduate (Elektra/EEG)'.


For Week Ending September 14, 1997

COMBINED ROCK MONITOR AIRPLAY										AIRPLAY THIS WEEK BY FORMAT									
TW	LW	WKS	TITLE (LABEL/PROMOTION LABEL)	ARTIST	THIS WEEK			LAST WEEK			MAINSTREAM			MODERN			TRIPLE-A		
					Audience (millions)	Detections No.	Rank	Audience (millions)	Detections No.	Rank	Audience (millions)	Detections No.	Rank	Audience (millions)	Detections No.	Rank	Audience (millions)	Detections No.	Rank
1	1	14	FLY (LAVA/ATLANTIC)	SUGAR RAY	22.4293	3460	2	22.6886	3525	1	2.5404	478	34	19.1740	2817	2	0.7149	165	—
2	4	10	WALKIN' ON THE SUN (INTERSCOPE)	SMASH MOUTH	22.0163	3536	1	20.2024	3294	2	2.6601	532	27	19.0038	2885	1	0.3524	119	—
3	2	25	PUSH (LAVA/ATLANTIC)	MATCHBOX 20	21.3598	3025	3	22.2154	3248	3	6.9740	1045	9	12.2857	1656	9	2.1001	330	6
4	5	10	EVERLONG (ROSWELL/CAPITOL)	FOO FIGHTERS	20.8941	3006	4	18.6064	2769	6	6.2817	974	12	14.5995	2027	3	0.0129	5	—
5	3	25	IF YOU COULD ONLY SEE (POLYDORA/A&M)	TONIC	18.9047	2740	5	20.2732	2789	5	9.3602	1311	5	7.8241	1181	—	1.7204	248	12
6	9	3	HITCHIN' A RIDE (REPRISE)	GREEN DAY	17.3987	2609	7	14.9489	2084	11	5.5723	850	17	11.8234	1755	7	0.0030	3	—
7	12	6	TOUCH, PEEL AND STAND (OUTPOST/GEFFEN)	DAYS OF THE NEW	16.0068	2333	11	13.8357	1934	14	12.0819	1800	2	3.9228	532	39	0.0021	1	—
8	7	13	BUILDING A MYSTERY (NETWERK/ARISTA)	SARAH MCLACHLAN	15.6273	2475	8	17.4764	2720	7	0.4803	101	—	12.0203	1878	6	3.1267	496	1
9	11	9	CRIMINAL (CLEAN SLATE/WORK)	FIONA APPLE	15.3108	2357	10	14.2308	2314	8	0.1952	75	—	13.0302	1883	5	2.0854	399	3
10	8	2	ANYBODY SEEN MY BABY (VIRGIN)	THE ROLLING STONES	15.2975	2048	14	15.2217	1760	19	11.5794	1568	3	0.5232	75	—	3.1949	405	2
11	13	9	SUPERMAN'S DEAD (COLUMBIA)	OUR LADY PEACE	15.0013	2399	9	13.6225	2227	9	5.2368	901	16	9.7620	1497	12	0.0025	1	—
12	6	17	TURN MY HEAD (RADIOACTIVE/MCA)	LIVE	14.9568	2677	6	17.4332	3113	4	6.3824	1132	7	7.4096	1323	15	1.1648	222	14
13	10	16	WRONG WAY (GASOLINE ALLEY/MCA)	SUBLIME	14.4672	2052	13	14.5833	2062	12	0.9110	132	—	13.5260	1906	4	0.0302	14	—
14	19	3	EVERYTHING TO EVERYONE (CAPITOL)	EVERCLEAR	13.9341	2010	15	11.4826	1462	26	3.3598	518	30	10.5743	1492	13	—	—	—
15	15	4	HELLO HELLO (ATLANTIC)	TALK SHOW	13.5513	2206	12	12.3603	1985	13	5.6049	954	13	7.9464	1252	18	—	—	—
16	16	26	SEMI-CHARMED LIFE (ELEKTRA/EEG)	THIRD EYE BLIND	12.5570	1823	18	11.9365	1838	15	2.2117	322	—	8.7092	1249	19	1.6361	252	11
17	18	5	PINK (COLUMBIA)	AEROSMITH	11.9155	1886	16	11.6974	1812	16	11.9155	1886	1	—	—	—	—	—	—
18	30	5	I CHOOSE (COLUMBIA)	THE OFFSPRING	11.5455	1399	28	8.7947	1142	37	6.7466	1019	11	4.7984	379	—	0.0005	1	—
19	14	11	D' YOU KNOW WHAT I MEAN? (EPIC)	OASIS	11.3640	1871	17	13.1923	2205	10	2.1050	305	—	9.1820	1519	11	0.0770	47	—
20	17	26	THE IMPRESSION THAT I GET (BIG BIG/MERCURY)	THE MIGHTY MIGHTY BOSSTONES	11.0457	1451	25	11.8468	1537	24	1.3532	261	—	9.0802	1091	—	0.6123	99	—
21	20	19	6 UNDERGROUND (CLEAN LP/VIRGIN)	SNEAKER PIMPS	10.7925	1392	29	11.0329	1586	22	0.1880	33	—	9.3531	1237	20	1.2514	122	—
22	33	2	TUBTHUMPING (REPUBLIC/UNIVERSAL)	CHUMBAWAMBA	10.6003	1354	30	8.2609	904	46	0.0073	5	—	10.5547	1325	14	0.0383	24	—
23	26	6	THE RASCAL KING (BIG BIG/MERCURY)	THE MIGHTY MIGHTY BOSSTONES	10.4346	1757	19	9.2788	1589	21	0.4458	63	—	9.9436	1669	8	0.0452	25	—
24	25	7	GRADUATE (ELEKTRA/EEG)	THIRD EYE BLIND	10.0182	1551	22	9.0983	1378	27	1.2766	275	—	8.7408	1275	16	0.0008	1	—
25	22	10	SELL OUT (MOJO/UNIVERSAL)	REEL BIG FISH	9.8254	1563	21	9.9245	1548	23	0.1286	14	—	9.6284	1521	10	0.0684	28	—
26	NEW		DON'T GO AWAY (EPIC)	OASIS	9.4856	1043	41	6.1990	594	83	0.4638	53	—	8.9278	962	24	0.0940	28	—
27	35	3	SUMMERTIME (DGC/GEFFEN)	THE SUNDAYS	9.4462	1334	31	7.6050	1103	38	0.0048	1	—	8.5893	1112	21	0.8521	221	15
28	27	5	MOST PRECARIOUS (A&M)	BLUES TRAVELER	9.1001	1615	20	8.9760	1493	25	1.9120	348	—	4.9352	884	27	2.2529	383	5
29	31	7	JACK-ASS (DGC/GEFFEN)	BECK	8.9929	1264	32	8.6388	1303	30	—	—	—	8.8645	1255	17	0.1284	9	—
30	29	31	GONE AWAY (COLUMBIA)	THE OFFSPRING	8.7445	1218	34	8.8502	1229	31	5.3993	757	19	3.3452	461	—	—	—	—
31	21	21	THE DIFFERENCE (INTERSCOPE)	THE WALLFLOWERS	8.6171	1550	23	10.1393	1796	18	4.1670	679	21	2.9930	647	32	1.4571	224	13
32	28	44	ONE HEADLIGHT (INTERSCOPE)	THE WALLFLOWERS	8.5276	1196	35	8.8644	1154	36	3.2677	479	—	4.3978	576	—	0.8621	141	—
33	32	11	TRUST (CAPITOL)	MEGADETH	8.3892	1146	37	8.4490	1180	33	8.3892	1146	6	—	—	—	—	—	—
34	23	9	LAZY EYE (WARNER SUNSET/WARNER BROS.)	GOO GOO DOLLS	8.2351	1544	24	9.6446	1811	17	5.6499	1026	10	2.5852	518	40	—	—	—
35	24	19	LISTEN (ATLANTIC)	COLLECTIVE SOUL	8.2262	1424	26	9.4246	1639	20	5.6537	915	14	2.1455	449	—	0.4270	80	—
36	39	23	SONG 2 (FOOD/PARLOPHONE/VIRGIN)	BLUR	7.8261	1023	42	6.9030	1052	40	1.1085	177	—	6.7147	844	28	0.0029	2	—
37	34	7	MARCHING TO MARS (THE TRACK FACTORY/MCA)	SAMMY HAGAR	7.7200	1407	27	7.6931	1356	29	7.6990	1391	4	—	—	—	0.0210	16	—
38	38	3	LIVE THROUGH THIS (FIFTEEN STORIES) (ATLANTIC)	MIGHTY JOE PLUM	7.5251	1244	33	6.9594	1176	34	6.3882	1065	8	1.1246	177	—	0.0123	2	—
39	37	12	BLEEDING ME (ELEKTRA/EEG)	METALLICA	7.4272	979	44	7.2570	991	43	7.1842	912	15	0.2430	67	—	—	—	—
40	NEW		DREAM (DREAMWORKS/GEFFEN)	FOREST FOR THE TREES	6.6923	1079	40	6.2702	1019	41	0.0343	11	—	6.6543	1064	22	0.0037	4	—

Records showing an increase in audience over the previous week, regardless of chart movement. Rankings broken down by mainstream, modern and triple-A formats (on right side of this page) correspond to charts printed in this week's Monitor and therefore rankings do not exist for recurrences and records below No. 40 (No. 20 for triple-A). Audience computed by cross-referencing exact times of airplay with Arbitron listener data. ©1997, Billboard/BPI Communications.

T A J A · S E V E L L E


I & I



epic records group

Produced by W.J. Mize  
From the forthcoming CD Music album "BOYS OF VANITY"  
NK 60074

www.355music.com  
1010 West 10th Street, Suite 1000  
Austin, TX 78703-4400  
©1997 Epic Records, a Division of Sony Music Entertainment Inc.



HOTMAN

# Billboard <sup>AIRPLAY</sup> Monitor Radio Seminar & Awards

October 16 - 18, 1997  
The Renaissance Orlando Resort

## ROCK FORMATIONS

How can programmers keep modern rock cohesive? What is the new structure of the mainstream radio market? Where do artists and labels fit into these equations? Get the answers and then some at the Billboard & Airplay Monitor Radio Seminar & Awards. Our annual gathering of more than a thousand leading radio and recording industry giants for three days of discussions and interactions, from the big picture to the tiniest details.

### Panel Highlights include:

- Building the Rock Wall
- Moving Modern Rock Forward
- Air Personality Supergroup
- The Track Date from Hell
- When PDs become Concert Promoters

For more info regarding the seminar:

Maureen P. Ryan,  
Director of Special Events  
(212) 536-5002 ph  
(212) 536-1400 fx

### Registration Fees:

Radio	Other
<input type="checkbox"/> \$149.00	<input type="checkbox"/> \$349.00 Early bird - received by Sept. 1st
<input type="checkbox"/> \$205.00	<input type="checkbox"/> \$399.00 Pre registration - received by Sept. 30th
<input type="checkbox"/> \$265.00	<input type="checkbox"/> \$449.00 Full registration - received after Sept. 30th

To Register: Please print clearly. Make all payments to Billboard Magazine.  
Mail to: Maureen Ryan, Billboard, 1515 Broadway, NY, NY 10036

NAME: \_\_\_\_\_  
COMPANY: \_\_\_\_\_ TITLE: \_\_\_\_\_  
ADDRESS: \_\_\_\_\_ CITY: \_\_\_\_\_ STATE: \_\_\_\_\_ ZIP: \_\_\_\_\_  
PHONE: \_\_\_\_\_ FAX: \_\_\_\_\_

I'M PAYING BY:  CHECK  MONEY ORDER  VISA/MC  AMEX  
CREDIT CARD #: \_\_\_\_\_ EXP. DATE: \_\_\_\_\_  
CARDHOLDER'S SIGNATURE: \_\_\_\_\_

(Credit cards not valid without signature & expiration date)

**Cancellation Policy:** All cancellations must be submitted in writing. A full refund less a \$75.00 administrative fee will be issued after the conference if notification is received on or before September 1st. Cancellations received between September 2 and September 30th will be subject to a \$150.00 cancellation fee. No refund will be issued for cancellations received after October 1st or for "no shows."

# TRIPLE-A POWER PLAYLISTS

Broadcast Data Systems  
Radio Frequency Services

<sup>AIRPLAY</sup> Monitor For Week Ending Sept. 14, 1997  
Playlists supplied by Broadcast Data Systems' Radio Track service. Songs ranked by number of plays in monitored week. Playlists are listed in order of TSS weekly curve, beginning with the highest-ranking station. Cumes are updated twice yearly following the release of the Spring and Fall Arbitron surveys. The number of stations shown each week varies depending upon space.

<b>WXRT</b> Chicago VP/Programming: Norm Winer MD: Patty Martin		<b>KFOG</b> San Francisco PD: Paul Marszalek MD: Bill Evans		<b>WBOS</b> Boston PD: Jim Herron MD: Cliff Nash	
TW LW		TW LW		TW LW	
1	Rolling Stones, Anybody Seen My Baby	1	Rolling Stones, Anybody Seen My Baby	1	Sneaker Pimps, 6 Underground
2	Freddie Jones Band, Wonder	2	Toad The Wet Sprocket, Whatever I Fear	2	Matchbox 20, Push
3	Sarah McLachlan, Building A Mystery	3	Sarah McLachlan, Building A Mystery	3	Third Eye Blind, Semi-Charmed Life
4	World Party, Call Me Up	4	The Pretenders, Goodbye	4	Tonic, If You Could Only See
5	Love Spilt Love, Long Long Time	5	Blues Traveler, Most Precarious	5	Sister Hazel, All For You
6	Abra Moore, Four Leaf Clover	6	Dave Matthews Band, Tripping Billies	6	Fiona Apple, Criminal
7	Son Volt, Cayatid Easy	7	Freddie Jones Band, Wonder	7	The Wallflowers, The Difference
8	Widepread Panic, Aunt Avis	8	Big Blue Hearts, Nobody Wants Her	8	Sarah McLachlan, Building A Mystery
9	Genesis, Congo	9	John Fogerty, Walking In A Hurricane	9	The Verve Pipe, The Freshmen
10	Leftover Salmon, Better	10	Widepread Panic, Aunt Avis	10	Toad The Wet Sprocket, Whatever I Fear
11	Matchbox 20, Push	11	John Fogerty, Blueboy	11	Texas, Say What You Want
12	Big Head Todd & The Monsters, Please Don't	12	The Boneseaters, Cold Sweat	12	John Fogerty, Blueboy
13	Ziggy Marley & The Melody Makers, People	13	Abra Moore, Four Leaf Clover	13	Mighty Mighty Bosstones, The Impression
14	John Fogerty, Blueboy	14	Stavie Ray Vaughan & Double, Scuttle	14	Fleetwood Mac, Silver Springs
15	The Jayhawks, Big Star	15	Blake Morgan, Lately	15	Live, Turn My Head
16	Dog's Eye View, Homecoming Parade	16	Jonny Lang, Hit The Ground Running	16	Teenage Fanclub, Take The Long Way Round
17	Jewel, V-12 Cadillac	17	Fleetwood Mac, The Chan	17	Paula Cole, I Don't Want To Wait
18	Beth Orton, She Cries Your Name	18	Huffamoose, Wait	18	Jewel, You Were Meant For Me
19	Shawn Colvin, You And The Mona Lisa	19	Robben Ford, In The Beginning	19	Shawn Colvin, Sunny Came Home
20	The Sundays, Summerime	20	Indigo Girls, Get Out The Map	20	Hootie & The Blowfish, Only Wanna Be With
21	Sherri Jackson, Maple Tree	21	Fleetwood Mac, Silver Springs	21	Hootie & The Blowfish, Only Wanna Be With
22	Blues Traveler, Most Precarious	22	Live, Turn My Head	22	Bruc Springsteen, Secret Garden
23	John Fogerty, Blueboy	23	John Fogerty, Blueboy	23	Rolling Stones, Anybody Seen My Baby
24	Sneaker Pimps, 6 Underground	24	Paul McCartney, Young Boy	24	The Cranberries, Free To Decide
25	The Wallflowers, The Difference	25	Fleetwood Mac, Dreams	25	Dave Matthews Band, Crash Into Me
26	INXS, Don't Lose Your Head	26	Big Head Todd & The Monsters, Please Don't	26	No Doubt, I Don't Speak
27	Del Amitri, Won't Make It Better	27	Counting Crows, Daylight Fading	27	Collective Soul, Blame
28	Indigo Girls, Get Out The Map	28	Jackson Browne, The Next Voice You Hear	28	Aleais Morisette, You Learn
29	Ben Harper, Glory & Consequence	29	Fiona Apple, Criminal	29	Counting Crows, A Long December
30	Live, Menca	30	Jonny Lang, Lie To Me	30	Joan Osborne, One Of Us

<b>KTCZ</b> Minneapolis PD: Lauren MacLeash MD: Jane Fredericksen		<b>WHPT</b> Tampa PD: Chuck Beck		<b>WVRV</b> St. Louis PD: Scott Strong MD: Mike Richter	
TW LW		TW LW		TW LW	
1	Rolling Stones, Anybody Seen My Baby	1	Tonic, If You Could Only See	1	Tonic, If You Could Only See
2	Blues Traveler, Most Precarious	2	Paula Cole, I Don't Want To Wait	2	Jewel, Foolish Games
3	John Fogerty, Blueboy	3	Ziggy Marley & The Melody Makers, People	3	Third Eye Blind, Semi-Charmed Life
4	Freddie Jones Band, Wonder	4	Sarah McLachlan, Building A Mystery	4	Sister Hazel, All For You
5	Sister Hazel, All For You	5	Matchbox 20, Push	5	Sarah McLachlan, Building A Mystery
6	Sarah McLachlan, Building A Mystery	6	10,000 Maniacs, More Than This	6	OHG, How Bizarre
7	Jonny Lang, Hit The Ground Running	7	Fiona Apple, Criminal	7	Texas, Say What You Want
8	Corey Stevens, One More Time	8	Mighty Mighty Bosstones, The Impression	8	Huffamoose, Wait
9	Boz Scaggs, It All Went Down The Drain	9	The Wallflowers, Three Marlenas	9	Sneaker Pimps, 6 Underground
10	Jonny Lang, Lie To Me	10	The Sundays, Summerime	10	Live, Turn My Head
11	Dave Matthews Band, Tripping Billies	11	Indigo Girls, Shame On You	11	Sugar Ray, Fly
12	Edwin McCain, See The Sky Again	12	Fleetwood Mac, Silver Springs	12	Duncan Sheik, She Runs Away
13	Indigo Girls, Shame On You	13	Jewel, Foolish Games	13	Blues Traveler, Most Precarious
14	Jars Of Clay, Crazy Times	14	Freddie Jones Band, Wonder	14	Rolling Stones, Anybody Seen My Baby
15	Stavie Ray Vaughan & Double, Prude And	15	Rolling Stones, Anybody Seen My Baby	15	Behan Johnson, World Keeps Spinning
16	Fleetwood Mac, Rhianonn	16	Blues Traveler, Most Precarious	16	Collective Soul, Listen
17	Fleetwood Mac, Silver Springs	17	Sister Hazel, All For You	17	The Wallflowers, The Difference
18	Toad The Wet Sprocket, Whatever I Fear	18	Matchbox 20, 3 AM	18	Matchbox 20, Push
19	Abra Moore, Four Leaf Clover	19	Sugar Ray, Fly	19	Paula Cole, I Don't Want To Wait
20	Matchbox 20, Push	20	Toad The Wet Sprocket, Whatever I Fear	20	Shawn Colvin, Sunny Came Home
21	Stavie Ray Vaughan & Double, Cressfire	21	Jan Trynin, Getaway	21	Dave Matthews Band, Crash Into Me
22	The Pretenders, Goodbye	22	Smash Mouth, Walkin' On The Sun	22	No Doubt, I Don't Speak
23	Huffamoose, Wait	23	Shawn Colvin, You And The Mona Lisa	23	Chalk Farm, Lie On Lie
24	The Wallflowers, One Headlight	24	Dave Matthews Band, Tripping Billies	24	Sheryl Crow, A Change Would Do You Good
25	Talking Heads, Burning Down The House	25	John Fogerty, Blueboy	25	Better Than Ezra, Desperately Wanting
26	Tom Petty & The Heartbreakers, You Got	26	Behan Johnson, World Keeps Spinning	26	John Mellencamp, Key West Intermezzo
27	John Cougar Mellencamp, Small Town	27	Third Eye Blind, Semi-Charmed Life	27	Dishwalla, Counting Blue Cars
28	Talking Heads, Once In A Lifetime	28	Dog's Eye View, Everything Falls Apart	28	The Wallflowers, One Headlight
29	The Wallflowers, The Difference	29	Counting Crows, Daylight Fading	29	John Mellencamp, Just Another Day
30	Dixie Sweats, Statesday	30	The Refreshments, Good Year	30	INXS, Elegantly Wasted

<b>KBCO</b> Denver PD: Dave Benson MD: Scott Arbough		<b>KMTT</b> Seattle SM: Chris Mays MD: Dean Carlson		<b>CIDR</b> Detroit PD: Murray Brookshaw MD: Ann Delisi	
TW LW		TW LW		TW LW	
1	Tonic, If You Could Only See	1	Rolling Stones, Anybody Seen My Baby	1	Huffamoose, Wait
2	Sarah McLachlan, Building A Mystery	2	Whiskeytown, 16 Days	2	Paula Cole, I Don't Want To Wait
3	Sister Hazel, All For You	3	Blues Traveler, Most Precarious	3	The Wallflowers, Three Marlenas
4	William Topky, The Ring	4	Indigo Girls, Get Out The Map	4	John Fogerty, Blueboy
5	Rolling Stones, Anybody Seen My Baby	5	Paula Cole, I Don't Want To Wait	5	Rolling Stones, Anybody Seen My Baby
6	Ziggy Marley & The Melody Makers, People	6	Fiona Apple, Criminal	6	Sarah McLachlan, Building A Mystery
7	Big Head Todd & The Monsters, Please Don't	7	Brad, The Day Brings	7	Jewel, V-12 Cadillac
8	John Fogerty, Blueboy	8	Shawn Colvin, You And The Mona Lisa	8	Jonny Lang, Getaway
9	John Mellencamp, Just Another Day	9	Beth Orton, She Cries Your Name	9	Fleetwood Mac, Silver Springs
10	Fiona Apple, Criminal	10	World Party, Call Me Up	10	Blues Traveler, Most Precarious
11	Shawn Colvin, You And The Mona Lisa	11	Bob Dylan, Milton Miles	11	Behan Johnson, World Keeps Spinning
12	Barenaked Ladies, The Old Apartment	12	Freddie Jones Band, Wonder	12	Sheryl Crow, A Change Would Do You Good
13	Paula Cole, I Don't Want To Wait	13	Huffamoose, Wait	13	Jai, I Believe
14	Brad, The Day Brings	14	Dog's Eye View, Homecoming Parade	14	Dave Matthews Band, Crash Into Me
15	Third Eye Blind, Semi-Charmed Life	15	Ben Harper, Glory & Consequence	15	Third Eye Blind, Semi-Charmed Life
16	The Verve Pipe, The Freshmen	16	Matchbox 20, Push	16	Fiona Apple, Criminal
17	Finn Brothers, Only Talking Sense	17	David Byrne, Dance On Vaseline	17	Jann Arden, The Sound Of
18	Indigo Girls, Shame On You	18	Chris Duarte Group, The Thrill Is Gone	18	Widepread Panic, Aunt Avis
19	The Boneseaters, Cold Sweat	19	The Wallflowers, Three Marlenas	19	Ben Harper, Faded
20	Eric Johnson, S.R.V.	20	Jon Trynin, Getaway	20	Dar Williams, Are You Out There
21	Indigo Girls, Get Out The Map	21	Big Blue Hearts, Nobody Wants Her	21	Shawn Colvin, Sunny Came Home
22	Van Morrison, Burning Ground	22	Jackson Browne, The Next Voice You Hear	22	John Mellencamp, Just Another Day
23	The Wallflowers, Three Marlenas	23	Texas, Say What You Want	23	Matchbox 20, Push
24	Blues Traveler, Most Precarious	24	Natalie Merchant, Wonder	24	Big Head Todd & The Monsters, Please Don't
25	Sheryl Crow, A Change Would Do You Good	25	Widepread Panic, Aunt Avis	25	Toad The Wet Sprocket, Whatever I Fear
26	Shawn Colvin, Sunny Came Home	26	John Mellencamp, Just Another Day	26	Counting Crows, A Long December
27	Ugly Americans, You Turn Me On	27	Del Amitri, What I Think She Sees	27	Paula Cole, Where Have All The Cowboys
28	T.D.F., Pop Stop	28	Tracy Chapman, Give Me One Reason	28	Dave Matthews Band, Tripping Billies
29	Counting Crows, Daylight Fading	29	Job Loy Nichols, As The Rain	29	Duncan Sheik, Barely Breathing
30	Eurythmics, Who's That Girl	30	The Smashing Pumpkins, 1979	30	Edwin McCain, See The Sky Again

<b>KKZN</b> Dallas PD: Amy Doyle APD: Spike		<b>KINK</b> Portland, OR PD: Dennis Constantine APD: Anita Garlock		<b>WXRV</b> Boston PD: Joanne Doody MD: Mike Mullaney	
TW LW		TW LW		TW LW	
1	Rolling Stones, Anybody Seen My Baby	1	Shawn Colvin, You And The Mona Lisa	1	Rolling Stones, Anybody Seen My Baby
2	Dave Matthews Band, Tripping Billies	2	John Fogerty, Blueboy	2	Smash Mouth, Walkin' On The Sun
3	The Wallflowers, Three Marlenas	3	Fleetwood Mac, Silver Springs	3	Jars Of Clay, Crazy Times
4	Paula Cole, I Don't Want To Wait	4	Paula Cole, I Don't Want To Wait	4	Brad, The Day Brings
5	Counting Crows, Daylight Fading	5	Rolling Stones, Anybody Seen My Baby	5	Dar Williams, Are You Out There
6	Matchbox 20, Push	6	Sarah McLachlan, Building A Mystery	6	John Fogerty, Swamp River Days
7	Sarah McLachlan, Building A Mystery	7	James Taylor, Line 'Em Up	7	Blues Traveler, Most Precarious
8	Sarah McLachlan, Building A Mystery	8	Sheryl Crow, Home	8	Paula Cole, I Don't Want To Wait
9	Fiona Apple, Criminal	9	Indigo Girls, Get Out The Map	9	Paul Thorn, I Bet He Knows
10	Dave Matthews Band, Crash Into Me	10	The Sundays, Summerime	10	Paul McCartney, Young Boy
11	Better Than Ezra, Desperately Wanting	11	Big Blue Hearts, Nobody Wants Her	11	Whiskeytown, 16 Days
12	Third Eye Blind, Semi-Charmed Life	12	Jackson Browne, The Next Voice You Hear	12	Dog's Eye View, Homecoming Parade
13	Fleetwood Mac, Silver Springs	13	Duncan Sheik, She Runs Away	13	Sugar Ray, Fly
14	John Fogerty, Blueboy	14	Texas, Say What You Want	14	Catie Curtis, Southernly
15	Duncan Sheik, Barely Breathing	15	The Wallflowers, Three Marlenas	15	World Party, Vandy Fair
16	Blues Traveler, Most Precarious	16	Jai, I Believe	16	The Pretenders, Goodbye
17	Whiskeytown, 16 Days	17	Ziggy Marley & The Melody Makers, People	17	Fleetwood Mac, Bleed To Love Her
18	Freddie Jones Band, Wonder	18	Joan Osborne, One Of Us	18	Joe Jackson, Angel
19	Shawn Colvin, You And The Mona Lisa	19	Big Head Todd & The Monsters, Please Don't	19	John Hiatt, Little Head
20	Jacksonville, Vineyard	20	Natalie Merchant, One Fine Day	20	Freddie Jones Band, Wonder
21	Charant Kriessak, Surrounded	21	John Mellencamp, Just Another Day	21	Billie Myers, Kiss The Rain
22	Toad The Wet Sprocket, Whatever I Fear	22	Natalie Merchant, Jealousy	22	Toad The Wet Sprocket, Whatever I Fear
23	James McMurtry, For All I Know	23	Sneaker Pimps, 6 Underground	23	Sarah McLachlan, Building A Mystery
24	World Party, Call Me Up	24	Dave Matthews Band, Crash Into Me	24	Huffamoose, Wait
25	Jonny Lang, Hit The Ground Running	25	Anita Baker, Mad About You - The Final	25	Longlegs, On & On
26	Ben Harper, Faded	26	Sheryl Crow, Everyday Is A Winding Road	26	Matchbox 20, Push
27	Sister Hazel, All For You	27	Blues Traveler, Most Precarious	27	Indigo Girls, Get Out The Map
28	Dog's Eye View, Homecoming Parade	28	Caedmon's Call, She's Back	28	John Fogerty, Blueboy
29	Paul McCartney, The World Tonight	29	Van Morrison, Burning Ground	29	Live, Turn My Head
30	Sheryl Crow, A Change Would Do You Good	30	Primitive Radio Gods, Standing Outside A	30	Blues Traveler, Carolina Blues



# TRIPLE-A AIRPLAY



**AIRPLAY**  
**Monitor**

For Week Ending  
Sept. 14, 1997

Playlists compiled by Broadcast Data Systems' Radio Track service. 24 Triple-A stations are electronically monitored 24 hours a day, 7 days a week. Songs ranked by number of detections in monitored week. Playlists updated by number of plays in monitored week. Playlists are listed in order of that weekly count, beginning with the highest during period. Counts are updated twice daily following the release of the Survey and T-List. Station airplay. Total number of stations and airplay counts are shown in adjacent column.

THIS WEEK	LAST WEEK	WKS. ON CHART	TITLE/LABEL/PROMOTION LABEL	ARTIST	DETECTIONS	
					TW	LW
★ ★ ★ NO. 1 ★ ★ ★						
1	1	13	<b>BUILDING A MYSTERY</b> <small>NETWORK/ARISTA</small> 2 weeks at No. 1	SARAH MCLACHLAN	496	566
2	3	2	ANYBODY SEEN MY BABY <small>VIRGIN</small>	THE ROLLING STONES	405	393
3	2	11	CRIMINAL <small>CLEAN SLATE/WORK</small>	FIONA APPLE	399	421
4	5	7	I DON'T WANT TO WAIT <small>IMAGO/WARNER BROS.</small>	PAULA COLE	398	366
5	6	6	MOST PRECARIOUS <small>A&amp;M</small>	BLUES TRAVELER	383	359
6	4	18	PUSH <small>LAVA/ATLANTIC</small>	MATCHBOX 20	330	373
7	7	7	BLUEBOY <small>WARNER BROS.</small>	JOHN FOGERTY	303	321
8	8	24	ALL FOR YOU <small>UNIVERSAL</small>	SISTER HAZEL	300	317
9	10	10	WAIT <small>INTERSCOPE</small>	HUFFAMOOSE	275	271
10	12	4	WHATEVER I FEAR <small>COLUMBIA</small>	TOAD THE WET SPROCKET	256	262
11	9	2	SEMI-CHARMED LIFE <small>ELEKTRA/VEG</small>	THIRD EYE BLIND	252	265
12	14	10	IF YOU COULD ONLY SEE <small>POLYDOR/A&amp;M</small>	TONIC	248	222
13	11	22	THE DIFFERENCE <small>INTERSCOPE</small>	THE WALLFLOWERS	224	246
14	13	8	TURN MY HEAD <small>RADIOACTIVE/MCA</small>	LIVE	222	236
15	19	2	SUMMERTIME <small>DGC/GEFFEN</small>	THE SUNDAYS	221	199
16	16	5	SILVER SPRINGS <small>REPRISE</small>	FLEETWOOD MAC	209	223
17	<b>NEW</b>		WONDER <small>CAPRICORN/MERCURY</small>	FREDDY JONES BAND	199	174
18	<b>NEW</b>		THREE MARLENAS <small>INTERSCOPE</small>	THE WALLFLOWERS	194	180
19	15	20	A CHANGE WOULD DO YOU GOOD <small>A&amp;M</small>	SHERYL CROW	178	227
20	<b>RE-ENTRY</b>		SHAME ON YOU <small>EPIC</small>	INDIGO GIRLS	177	169

## MODERN ADULT



THIS WEEK	LAST WEEK	WKS. ON CHART	TITLE/LABEL/PROMOTION LABEL	ARTIST	DETECTIONS	
					TW	LW
★ ★ ★ NO. 1 ★ ★ ★						
1	3	12	<b>BUILDING A MYSTERY</b> <small>NETWORK/ARISTA</small> 2 weeks at No. 1	SARAH MCLACHLAN	1397	1369
2	2	21	SEMI-CHARMED LIFE <small>ELEKTRA/VEG</small>	THIRD EYE BLIND	1358	1398
3	5	16	PUSH <small>LAVA/ATLANTIC</small>	MATCHBOX 20	1349	1249
4	1	22	ALL FOR YOU <small>UNIVERSAL</small>	SISTER HAZEL	1337	1409
5	4	16	IF YOU COULD ONLY SEE <small>POLYDOR/A&amp;M</small>	TONIC	1292	1253
6	7	9	I DON'T WANT TO WAIT <small>IMAGO/WARNER BROS.</small>	PAULA COLE	1254	1113
7	6	8	FLY <small>LAVA/ATLANTIC</small>	SUGAR RAY	1253	1124
8	8	10	FOOLISH GAMES <small>ATLANTIC</small>	JEWEL	1173	1085
9	9	20	HOW BIZARRE <small>HUH/MERCURY</small>	OMC	1034	1030
10	10	12	THE IMPRESSION THAT I GET <small>BIG RIG/MERCURY</small>	THE MIGHTY MIGHTY BOSSTONES	906	930
11	12	7	CRIMINAL <small>CLEAN SLATE/WORK</small>	FIONA APPLE	904	847
12	11	14	THE DIFFERENCE <small>INTERSCOPE</small>	THE WALLFLOWERS	890	915
13	13	22	THE FRESHMEN <small>RCA</small>	THE VERVE PIPE	814	827
14	19	4	WALKIN' ON THE SUN <small>INTERSCOPE</small>	SMASH MOUTH	787	613
15	16	31	SUNNY CAME HOME <small>COLUMBIA</small>	SHAWN COLVIN	711	749
16	15	31	CRASH INTO ME <small>RCA</small>	DAVE MATTHEWS BAND	694	757
17	17	8	TURN MY HEAD <small>RADIOACTIVE/MCA</small>	LIVE	679	678
18	14	20	A CHANGE WOULD DO YOU GOOD <small>A&amp;M</small>	SHERYL CROW	666	796
19	18	48	BARELY BREATHING <small>ATLANTIC</small>	DUNCAN SHEIK	661	651
20	20	13	6 UNDERGROUND <small>CLEAN UP/VIRGIN</small>	SNEAKER PIMPS	576	605

Records showing an increase in detections over the previous week, regardless of chart movement. A record which has been on the chart for more than 20 weeks will not receive a bullet, even if it registers an increase in detections. Airpower is awarded to these records which attain 250 detections for the first time in triple-A and 500 detections in modern adult. Titles below No. 20 are removed from the chart after 26 weeks. If two records are tied in number of plays, the record being played on more stations is placed first. ©1997, Billboard/BPI Communications.



### ON TOUR

- 9/19 CAMBRIDGE, MA
- 9/23 ROCHESTER, NY
- 9/24 ALBANY, NY
- 9/25 WILMINGTON, NC
- 9/26 PHILADELPHIA, PA
- 9/27 NEW YORK, NY
- 9/28 ALEXANDRIA, VA
- 9/30 PITTSBURGH, PA
- 10/2 ANN ARBOR, MI
- 10/5 CHICAGO, IL
- 10/8 BOULDER, CO
- 10/10 SEATTLE, WA
- 10/11 PORTLAND, OR
- 10/16 SANTA ROSA, CA
- 10/18 LOS ANGELES, CA
- 11/1 PITTSBURGH, PA  
(WITH SARAH MCLACHLAN)

# DAR

*williams*

**ARE YOU OUT THERE**

THE DEBUT SINGLE FROM HER HIGHLY ANTICIPATED CD

**END OF THE SUMMER**

SCANNING 3000 UNITS PER WEEK!

**NEW THIS WEEK!**

**KMTT KXST**

PRODUCED BY STEVE MILLER  
FOR CACOPHONY PRODUCTIONS  
ENGINEERED BY NEIL DORFSMAN  
YOUNG/HUNTER MANAGEMENT

www.cacophonystudio.com

Compiled from a random sample of airplay reported by Broadcast Data Systems' Radio Trak service to Rock Airplay Monitor. The information in this chart and rock airplay are automatically updated 24 hours a day, 7 days a week. Songs are ranked by number of detections in 1997. ©1997, Broadcast Data Systems

THIS WEEK	LAST WEEK	WKS. ON CHART	MAINSTREAM		DETECTIONS		
			TITLE/LABEL/PROMOTION LABEL	ARTIST	TW	LW	
			★★★★ No. 1 ★★★★★				
1		20	PINK COLUMBIA	AEROSMITH	1886	1812	
2	1	10	TOUCH, PEEL AND STAND OUTPOST/GEFFEN	DAYS OF THE NEW	1800	1597	
3	4	2	ANYBODY SEEN MY BABY VIRGIN	THE ROLLING STONES	1568	1291	
4	3	8	MARCHING TO MARS THE TRACK FACTORY/MCA	SAMMY HAGAR	1391	1350	
5	6	25	IF YOU COULD ONLY SEE POLYDOR/A&M	TONIC	1311	1274	
6	7	18	TRUST CAPITOL	MEGADETH	1146	1180	
7	5	12	TURN MY HEAD RADIOACTIVE/MCA	LIVE	1132	1287	
8	9	10	LIVE THROUGH THIS (FIFTEEN STORIES) ATLANTIC	MIGHTY JOE PLUM	1065	1041	
9	8	29	PUSH LAVA/ATLANTIC	MATCHBOX 20	1045	1083	
10	10	10	LAZY EYE WARNER SUNSET/WARNER BROS.	GOO GOO DOLLS	1026	1022	
11	13	9	I CHOOSE COLUMBIA	THE OFFSPRING	1019	913	
12	16	6	EVERLONG ROSWELL/CAPITOL	FOO FIGHTERS	974	824	
13	15	4	HELLO HELLO ATLANTIC	TALK SHOW	954	835	
14	11	19	LISTEN ATLANTIC	COLLECTIVE SOUL	915	1016	
15	12	16	BLEEDING ME ELEKTRA/VEEG	METALLICA	912	917	
16	14	14	SUPERMAN'S DEAD COLUMBIA	OUR LADY PEACE	901	839	
			★★★★ AIRPOWER ★★★★★				
17	24	2	HITCHIN' A RIDE REPRISE	GREEN DAY	850	597	
18	21	5	MY OWN PRISON WIND-UP	CREED	799	686	
19	19	31	GONE AWAY COLUMBIA	THE OFFSPRING	757	789	
20	18	15	LAST CUP OF SORROW SLASH/REPRISE	FAITH NO MORE	732	790	
21	17	20	THE DIFFERENCE INTERSCOPE	THE WALLFLOWERS	679	816	
22	20	11	SOUL OF LOVE VELVEL	PAUL RODGERS	677	754	
23	22	7	SUGARCANE COLUMBIA	CRY OF LOVE	648	673	
24	27	6	ONE ANGEL AWARE/CAPITOL	STIR	629	549	
25	23	16	CAROLINA BLUES A&M	BLUES TRAVELER	607	657	
26	30	6	HIGH ROCKET/A&M	JIMMIE'S CHICKEN SHACK	560	524	
27	33	3	WALKIN' ON THE SUN INTERSCOPE	SMASH MOUTH	532	437	
28	25	9	AENEMA ZOO/VOLCANO	TOOL	528	559	
29	NEW		SLOW RIDE REVOLUTION	KENNY WAYNE SHEPHERD BAND	518	235	
30	NEW		EVERYTHING TO EVERYONE CAPITOL	EVERCLEAR	518	342	
31	NEW		BLAME ATLANTIC	COLLECTIVE SOUL	504	207	
32	26	6	CONGO ATLANTIC	GENESIS	499	553	
33	31	5	HIT THE GROUND RUNNING A&M	JONNY LANG	494	516	
34	29	5	FLY LAVA/ATLANTIC	SUGAR RAY	478	536	
35	28	11	LOCKED & LOADED EPIC	JACKYL	450	540	
36	36	2	THE FALL MCA	THE NIXONS	443	376	
37	37	2	BEAUTY ELEKTRA/VEEG	MOTLEY CRUE	416	367	
38	NEW		TRIALS WARNER BROS.	COOL FOR AUGUST	371	310	
39	35	4	HAVE YOU SEEN ME LATELY? DGC/GEFFEN	COUNTING CROWS	364	406	
40	34	17	BATON ROUGE MCA	THE NIXONS	353	417	

THIS WEEK	LAST WEEK	WKS. ON CHART	MODERN		DETECTIONS		
			TITLE/LABEL/PROMOTION LABEL	ARTIST	TW	LW	
			★★★★ No. 1 ★★★★★				
1	2	11	WALKIN' ON THE SUN INTERSCOPE	SMASH MOUTH	2885	2745	
2	1	14	FLY LAVA/ATLANTIC	SUGAR RAY	2817	2812	
3	4	9	EVERLONG ROSWELL/CAPITOL	FOO FIGHTERS	2027	1942	
4	5	16	WRONG WAY GASOLINE ALLEY/MCA	SUBLIME	1906	1896	
5	6	10	CRIMINAL CLEAN SLATE/WORK	FIONA APPLE	1883	1812	
6	3	13	BUILDING A MYSTERY NETTWERK/ARISTA	SARAH MCLACHLAN	1878	1996	
7	12	3	HITCHIN' A RIDE REPRISE	GREEN DAY	1756	1485	
8	11	8	THE RASCAL KING BIG RIG/MERCURY	THE MIGHTY MIGHTY BOSSTONES	1669	1501	
9	8	22	PUSH LAVA/ATLANTIC	MATCHBOX 20	1650	1792	
10	10	19	SELL OUT MOJO/UNIVERSAL	REEL BIG FISH	1521	1496	
11	7	11	D' YOU KNOW WHAT I MEAN? EPIC	OASIS	1519	1822	
12	14	9	SUPERMAN'S DEAD COLUMBIA	OUR LADY PEACE	1497	1388	
			★★★★ AIRPOWER ★★★★★				
13	21	3	EVERYTHING TO EVERYONE CAPITOL	EVERCLEAR	1492	1120	
			★★★★ AIRPOWER ★★★★★				
14	27	2	TUBTHUMPING REPUBLIC/UNIVERSAL	CHUMBAWAMBA	1325	875	
15	9	16	TURN MY HEAD RADIOACTIVE/MCA	LIVE	1323	1590	
16	18	8	GRADUATE ELEKTRA/VEEG	THIRD EYE BLIND	1275	1161	
17	16	9	JACK-ASS DGC/GEFFEN	BECK	1255	1302	
18	20	4	HELLO HELLO ATLANTIC	TALK SHOW	1252	1150	
19	17	27	SEMI-CHARMED LIFE ELEKTRA/VEEG	THIRD EYE BLIND	1249	1253	
20	13	23	6 UNDERGROUND CLEAN UP/VIRGIN	SNEAKER PIMPS	1237	1421	
			★★★★ AIRPOWER ★★★★★				
21	25	4	SUMMERTIME OUTPOST/GEFFEN	THE SUNDAYS	1112	904	
22	23	5	DREAM DREAMWORKS/GEFFEN	FOREST FOR THE TREES	1064	1006	
23	22	12	BREATHE XL MUTE/MAVERICK/WARNER BROS.	PRODIGY	1014	1068	
24	NEW		DON'T GO AWAY EPIC	OASIS	962	552	
25	29	4	PRISONER CAPRICORN/MERCURY	311	929	839	
26	37	2	THIS LONELY PLACE MOJO/UNIVERSAL	GOLDFINGER	909	708	
27	28	5	MOST PRECARIOUS A&M	BLUES TRAVELER	884	823	
28	26	25	SONG 2 FOOD/PARLOPHONE/VIRGIN	BLUR	844	867	
29	32	7	(CAN'T YOU) TRIP LIKE I DO IMMORTAL/EPIC	FILTER AND THE CRYSTAL METHOD	817	796	
30	24	8	VILLAINS RCA	THE VERVE PIPE	750	893	
31	30	7	LET DOWN CAPITOL	RADIOHEAD	742	820	
32	34	20	THE DIFFERENCE INTERSCOPE	THE WALLFLOWERS	647	734	
33	40	3	LONG LONG TIME MAVERICK/WARNER BROS.	LOVE SPIT LOVE	618	577	
34	NEW		LUCKY MAMMOTH/ATLANTIC	SEVEN MARY THREE	599	485	
35	35	14	SICK & BEAUTIFUL CRUNCHY/INTERSCOPE	ARTIFICIAL JOY CLUB	583	722	
36	36	5	HAVE YOU SEEN ME LATELY? DGC/GEFFEN	COUNTING CROWS	580	713	
37	39	8	MY TOWN TVT	BUCK-O-NINE	554	623	
38	38	7	NOT IF YOU WERE THE LAST JUNKIE ON EARTH TIM KERR/CAPITOL	THE DANDY WARHOLS	533	650	
39	NEW		TOUCH, PEEL AND STAND OUTPOST/GEFFEN	DAYS OF THE NEW	532	337	
40	31	10	LAZY EYE WARNER SUNSET/WARNER BROS.	GOO GOO DOLLS	518	788	

Records showing an increase in detections over the previous week, regardless of chart movement. A record which has been on either chart for more than 20 weeks will not receive a bullet, even if it registers an increase in detections. Airpower awarded to those records which attain 800 detections (mainstream) or 1,100 (modern) for the first time. If two records are tied in number of plays, the record being played on more stations is placed first. Records below the top 20 are removed from the chart after 26 weeks.

# SIZE 14

## “CLAIRE DANES POSTER”

FROM THE SELF-TITLED FULL LENGTH ALBUM



**Spinning AND Requesting at Modern!**

WLUM    WDGE    WHMP    WWDX    WJSE  
 KGDE    WKRL    KJEE    KFTE    KNSX  
 KXTE    KPOI    WBZF    KUGR    KZRK  
 KEDJ    KWOD    WNFZ    KZTX    WBER

**Building at Active...**

WGIR    KZBB  
 KRAD    WHMH  
 WBXQ    WRBR  
 KTUX    and more!

**Touring your market in the very near future! Ask your Freeworld representative for tour date opportunities!**

Produced by Mike Clink    Management: Jonathan Cohen and Jeffrey Norskog for JCM    ©1997 Freeworld Entertainment, L.L.C. • All Rights Reserved

Produced by Robin Taylor-Firth and Tim Kullert for Black Olive • Managed by Rupert Lord & Tom Parkinson for New State Entertainment • Tim's (®) Registered Marks (®) The RCA Records Label is a unit of BMG Entertainment • Tim's (®) Registered Marks (®) The RCA Records Label is a trademark of BMG Music. © 1997 BMG Entertainment



Vital Ingredient for airplay

**BIG SPINS AT BIG STATIONS!**

**KROQ 25 spins**  
**KITS 23 spins**  
**M2 12 plays**



**91X 15 spins**  
**WPLT 14 spins**

**NEW ADDS!**

**KTCL**  
**WFNX**

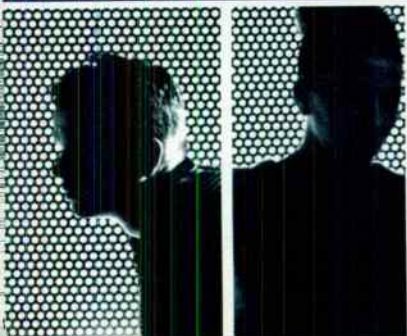
**olive**

**you're not alone**

**#1 UK SINGLE**

"The 1st bona fide pop sensation of the electronica movement has arrived." - BILLBOARD, LARRY FLICK, JULY 12, 1997

World Radio History



you had to **win** you couldn't just **pass**  
the smartest **ass** at the **top** of the **class**  
your flying **colours** your family **tree**  
and all your lessons in **history**  
your catholic **blues**  
your convent **shoes** your stick on **tattoos**  
now they're making the **news**  
your **holy war** your northern **star**  
your sermon on the **mount**  
from the **boot** of your **car**

PLEASE

On tour

10/25 Toronto 10/29 Minneapolis 10/31 Detroit 11/2 Montreal 11/8 St. Louis  
11/10 Tampa 11/12 Jacksonville 11/14 Miami 11/19 Indianapolis  
11/21 New Orleans 11/23 San Antonio 11/26 Atlanta 11/28 Houston

  
ISLAND  
part of the world of PolyGram  
©1997 PolyGram International Music B.V.