

TOP 40 AIRPLAY Monitor

• We Listen To Radio •

July 25, 1997 \$4.95 Volume 5 • No. 30

TOP 40 HIGHLIGHTS

MAINSTREAM

#1

MEREDITH BROOKS

Bitch (CAPITOL)

★ ★ ★ AIRPOWER ★ ★ ★

NO RECORDS QUALIFIED FOR AIRPOWER THIS WEEK

GOING FOR AIRPLAY

ALLURE FEATURING 112 • *All Cried Out* (TRACK MASTERS/CRAVE)
HOOVERPHONIC • *2 Wicky* (EPIC)
BILLY JOEL • *To Make You Feel My Love* (COLUMBIA)

RHYTHMIC TOP 40

#1

WILL SMITH

Men In Black (COLUMBIA)

★ ★ ★ AIRPOWER ★ ★ ★

SPICE GIRLS • *2 Become 1* (VIRGIN)
98 DEGREES • *Invisible Man* (MOTOWN)

CROSSOVER

#1

PUFF DADDY & FAITH EVANS (FEATURING 112)

I'll Be Missing You (BAD BOY/ARISTA)

★ ★ ★ AIRPOWER ★ ★ ★

FOXY BROWN FEATURING DRU HILL • *Big Bad Momma* (DEF JAM/MERCURY)
PUFF DADDY & THE FAMILY (FEAT. THE NOTORIOUS B.I.G., LIL' KIM & THE LOX) •
It's All About The Benjamins (BAD BOY/ARISTA)
DANA HARRIS • *As We Lay* (TONY MERCEDES/LAFACE/ARISTA)

GOING FOR AIRPLAY

ALLURE FEATURING 112 • *All Cried Out* (TRACK MASTERS/CRAVE/EPIC)

ADULT TOP 40

#1

SHAWN COLVIN

Sunny Came Home (COLUMBIA)

★ ★ ★ AIRPOWER ★ ★ ★

JEWEL • *Foolish Games* (ATLANTIC)
TONIC • *If You Could Only See* (POLYDOR/A&M)

ADULT CONTEMPORARY

#1

MICHAEL BOLTON

Go The Distance (COLUMBIA)

★ ★ ★ AIRPOWER ★ ★ ★

NATALIE COLE • *A Smile Like Yours* (ELEKTRA/EEG)
LEANN RIMES • *How Do I Live* (CURB)

GOING FOR AIRPLAY

NONE THIS WEEK

One Becomes Two As Rhythm And Crossover Get Their Own Charts

If you're looking for the Rhythm-Crossover chart, it split.

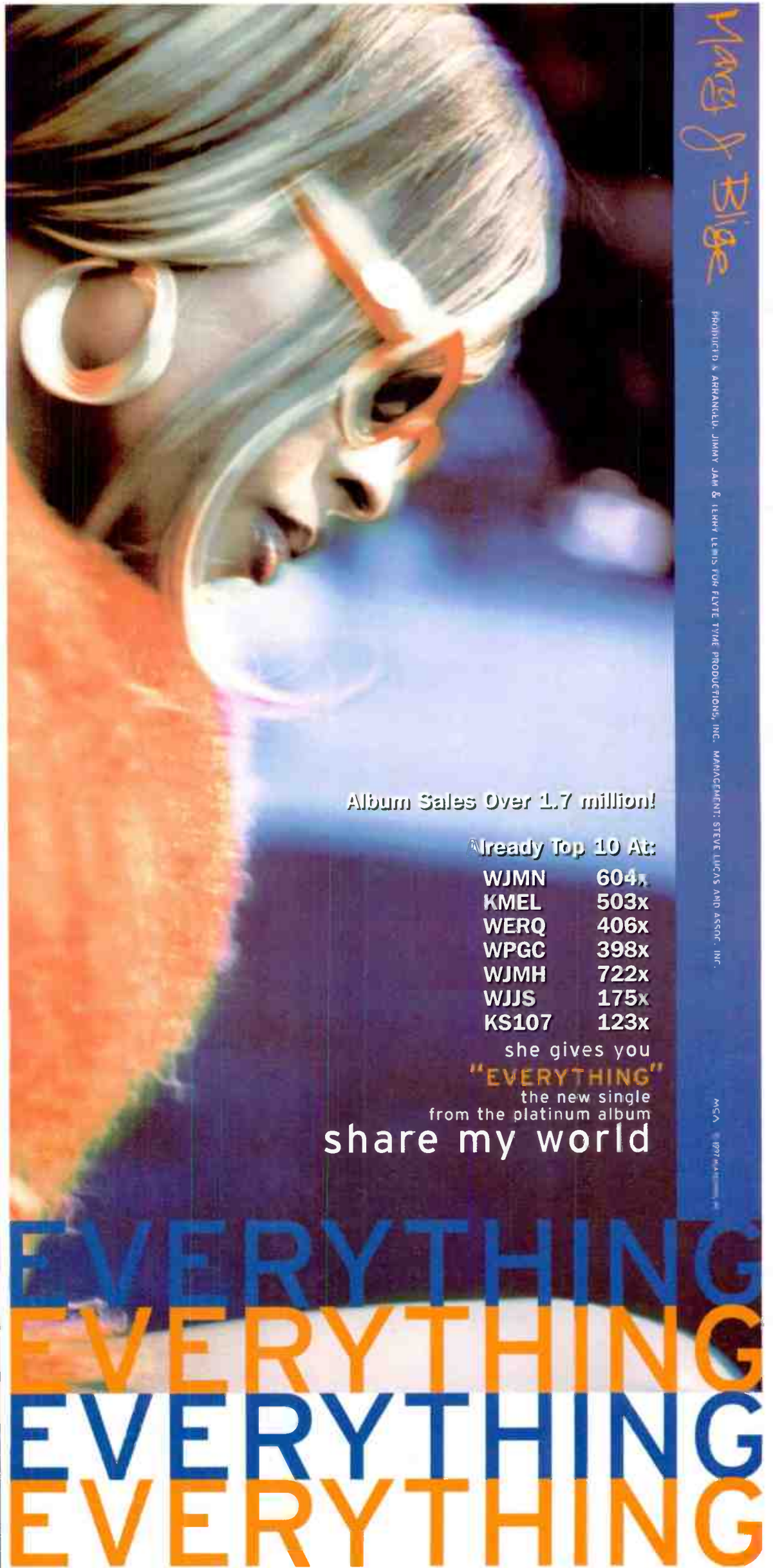
Effective this week, Top 40 Airplay Monitor replaces our Top 40/Rhythm-Crossover chart with two new charts designed to give programmers more useful tools and the record business a better chance at telling its stories, as well as to provide a fair, consistent solution to the format-definitions controversy that has always gone with the Rhythm-Crossover chart.

The new Rhythmic Top 40 chart can be found on the back page, in place of the old Rhythm-Crossover chart. Currently based on data from 34 reporters, the new chart will measure those stations that fit the magazine's original definition of rhythm-crossover—playing a mixture of R&B, dance-pop, and R&B or pop ballads without a significant amount

of rock. Those stations are all former rhythm-crossover reporters whose playlists are composed of less than 90% R&B music. While some of those stations will play an occasional pop-rock megahit, i.e., "Ironic" or "Don't Speak," they still differ from even rhythmic-leaning mainstream outlets, which consistently play some pop-rock at any given time.

The new Crossover chart, on page 20, is a new Broadcast Data Systems custom chart measuring 52 stations that also appear on either Airplay Monitor's rhythmic top 40 (if their music is 70%-90% R&B-based) or mainstream R&B panels (if their top 40 most-played songs are greater than 90% R&B-based). Those 52 stations—which will be dual reporters to the new chart—

Continued on page 5



Mary J. Blige

PRODUCED & ARRANGED BY JIMMY JAM & LERRY LEMMONS FOR FLYTE TIME PRODUCTIONS, INC. MANAGEMENT: STEVE LUCAS AND ASSOC., INC.

MCA 1997

Album Sales Over 1.7 million!

Already Top 10 At:

WJMN	604x
KMEL	503x
WERQ	406x
WPGC	398x
WJMH	722x
WJJS	175x
KS107	123x

she gives you

"EVERYTHING"

the new single
from the platinum album

share my world

EVERYTHING
EVERYTHING
EVERYTHING
EVERYTHING

VIRGIN'S RHYTHM METHOD

LOS UMBRELLOS



The #1 requested record after 1 week on the air. Power Rotation after 2 weeks. The record stores won't leave us alone... don't wait like you did on "Macarena."

—Charles Chavez (APD/MD: KHYS)

A cross between "Macarena," Spice Girls and Shaggy. This record is already a power in San Antonio. Top 5 phones.

—Steve Chavez (MD: KTFM)

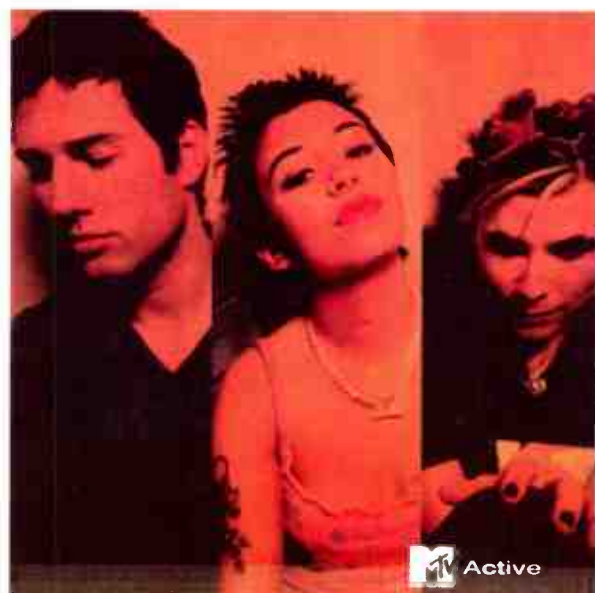
Instant Reaction!

KHYS	70x	KTFM	40x	KZFM	33x
WPOW	27x	KBFM	20x	KOHT	28x



"NO TENGO DINERO"

SNEAKER PIMPS



8 Months Old and Still Building True Hits Don't Go Away!

⑨ Modern Rock Monitor

②③ Modern AC Monitor
★★★AIRPOWER★★★

Flawless Research!
Sales of 120,000!
Great Phones!

KIIS	KHTQ	WALC	KFMB	KLLC
WPTE	KKPN	STAR 98.7	WBMX	WSHE
Q106	WTMX	KAMX	KALC	KJ103

and many more!

99x #1 Callout Record This Week!



"6 UNDERGROUND"

"PIECE OF MY HEART"



You can quote me on this... one of the Top 5 songs of the Summer!

—Wookie (PD: WOCQ)

Shaggy has the mass appeal sound that works well for WJMN. "Piece Of My Heart" is getting Top 5 phones after 2 weeks of airplay.

—Cat Collins (APD/MD: WJMN)

WJMN	45x
WOCQ	20x
WJJS	9x

Added At Groove Radio!

SHAGGY



"AROUND THE WORLD"



A club anthem that came from the mixshows and went straight to regular rotation. This song is a radio record, I don't care what my brother says.

—Charles Chavez (APD/MD: KHYS)

A huge record in all the bay area clubs. Huge in the mixshows. This is something we are going to deal with.

—"Jazzy" Jim Archer (MD: KYLD)

WKTU	Add
KHYS	45x
Groove Radio	40x
KPTY	
WPOW	

Huge Mix Show Song-Crossing to Radio!

DAFT PUNK



SATISFACTION GUARANTEED

<http://www.virginrecords.com> AOL Keyword: Virgin Records

©1997 Virgin Records America, Inc.

Confab Panelists: AC Format In Flux

by Marc Schiffman, Kevin Carter, and Sean Ross

With top 40 enjoying relatively good times, the AC format was most notably in flux this year, judging from panels at the 22nd annual Conclave, held July 17-20 in St. Paul, Minn.

The emerging modern adult format was the subject of conversation in not only the Conclave's AC session, but also the modern rock and triple-A sessions, where both of those formats are now competing with a more female-friendly, mass-appeal version of themselves.

Atlantic VP of promotion Danny Buch, echoing the conclusions of an Airplay Monitor format-analysis story last year, noted, "We're now seeing the most music being broken by the hot and modern AC formats; they used to be last."

Consultant and format pioneer Dave Beasing told attendees, "If you're a broad-based AC and find yourself No. 2 or No. 3 in the format in your market, you're headed for tough times. You're better off fragmenting yourself before someone else fragments you."

As a result of fragmentation and "format walls" within markets, independent promoter Donna Brake and Columbia VP of AC promo Elaine Locatelli saw changes in promoting rec-

ords to PDs of multiple outlets. "I've had [PDs] tell me they couldn't play a particular song on their hot AC because they were already playing it on their modern AC," said Brake. "Instead of a PD competing with the guy across the street, he's now become the guy across the street."

But Gary Nolan, PD of soft AC WLTE Minneapolis, finds the splintering of AC beneficial.

By contrast, the mood in the top 40 session was upbeat, with co-moderator KMXV (Mix 93.3) Kansas City PD Jon Zellner sounding one of the few cautionary notes when he warned PDs about rap's current resurgence and urged them to consider how those records would sound next to their station's "core sound."

The Telecom Act world was also a factor in many sessions, including one where the Department of Justice's Dando Cellini ended up toe-to-toe with Triathlon's Norm Feuer on the DOJ's willingness to intervene in prospective deals because of advertiser concerns. "I've never met the guy who said, 'I can't buy around you,'" said Feuer to the morning's first spontaneous ovation. And in response to a discussion of syndicated programming, the FCC's Brian Browdie noted that the FCC planned a broad inquiry about the role of public interest for all spectrum users starting next month.

ABC, Citadel Restructure; Sinclair Grows

ABC Radio restructures its stations division. John Hare, president/GM of WBAP/KSCS Dallas, adds responsibility for ABC's stations in New York (including adult top 40 WPLJ), Los Angeles, Dallas, Detroit (adult modern WPLT and rhythmic top 40 WDRO), and Washington, D.C. (adult top 40 WRQX). Mark Steinmetz, president/GM of ABC's Minneapolis stations, will also oversee its properties in Chicago, San Francisco, and Atlanta.

Citadel Communications ups three managers to regional president posts. Bob Proffitt is upped from VP/GM of the Albuquerque, N.M., properties to president of the central region. Stu Stanek is upped from VP of operations to president of Citadel East. Ed Hardy is named president of Citadel West. He was managing the former Deschutes River properties purchased by Citadel last fall. In other Citadel news, Scott Mahalick is upped from VP/GM of its Salt Lake City stations, including AC KBEE, to director of programming for all Citadel properties. Citadel SLC VP of sales Pete Benedetti is named VP/GM.

Sinclair Broadcast Group buys the 24 Heritage Media radio stations, including adult top 40 WEZB (B97) New Orleans and Milwaukee hot ACs WMYX/WAMG, for \$630 million. In other sales news, ARS is giving Entercom its AC KUDL Kansas City, country sister WDAF, and standards AM KCTC Sacramento, Calif., as well as \$3 million, in exchange for oldies KLOU St. Louis.

The syndicated '80s show, "Backtrax USA," hosted by WBHT (Hot 97) Wilkes-Barre, Pa., PD Kid Kelly, won a trademark-infringement suit in New Jersey Federal District Court against California-based Backtracks Music for distributing CDs under the Backtrax trademark. The victory clears the way for Backtrax USA to release its own CD compilation series.

PROGRAMMING: HAMILTON AFFAIR

After weeks of speculation, KBGG San Francisco PD Bob Hamilton moves over to become PD of KIOI (K101), a position that's been vacant since Casey Keating left several months ago. Current K101 OM Michael Erickson, in turn, will become PD of KBGG, which is expected to flip from classic rock to adult R&B shortly. Joe Baylis from KGBY/KFBK Sacramento is named GM of

KBGG. Hamilton will continue to oversee KABL and KNEW-AM.

Under new owners Bonneville, WLUP Chicago returns from modern adult to its longtime heritage rock format, something it abandoned in 1993 to go N/T on FM. PD Greg Solk remains.

Veteran PD J.J. Cook exits Broadcast Programming in Seattle to join John Martin and Michael Abl at Cincinnati-based Critical Mass Media as GM of its Nest Marketing division, replacing Brad Ellis, now programming Jacor's top 40/adult WNNK Cincinnati. Cook starts Aug. 1.

Longtime AC WLEV Allentown, Pa., flips to "Cat Country." WLEV's AC format, as well as PD/morning man J. Davis, will resurface on soon-to-be-co-owned rival AC WFMZ.

Des Moines, Iowa, will get a new top 40 outlet when KCCQ (Hot 107) Ames, Iowa, which already does about a 1 share in the market, upgrades its signal to 25,000 watts as Hot 105. The target date is late October/early November.

PD Rob Walker exits Nassau's hot AC WJLK (the Point) Monmouth, N.J., to become imaging production director at WALC (Alice @ 104.1) St. Louis. WPST Trenton, N.J., APD/MD

Mike Kaplan replaces Walker, whose wife, Liz Jordan, remains MD/middays at WJLK's sister top 40 WBBO (B98.5), for now. Also at WALC, p.m. driver Jimmy Steele resigns to pursue a programming career. Call 314-946-5787.

Ken Mackenzie, interim PD of soft AC WEZF Burlington, Vt., gets the job officially.

PEOPLE: LESS SEX FOR CHICAGO

WBBM-FM (B96) Chicago cuts its morning sex-talk show "Private Lives" from two hours to one. It now runs 9-10 a.m., while morning hosts Ed Volkman and Joe Bohannon air 5-9 a.m.

As part of its recent switch to a more R&B direction, KKFR (Power 92) Phoenix hires EZ Street from R&B WKKV (V100) Milwaukee for afternoons. He replaces APD Brian Douglas (602-473-3506).

AC WENS Indianapolis moves 13-year afternoon jock Bernie Eagan to morning co-host, replacing Scott Fischer, who exits to pursue his voice-over career.

KZZO (The Zone) Sacramento, Calif., MD/afternoon personality Carrie Owens exits; former



TOP 40 TOPICS BY SEAN ROSS

212-536-5264 • sross@billboard.com

Finally, The End Of The Name Game?

One of the hardest things about naming a hybrid is that hybrids often evolve.

Consider the term "urban contemporary." When it first came to the fore in the early '80s, born to the stations that had evolved out of disco, it wasn't yet the euphemism for R&B that it later became but represented "salt and pepper" stations that played predominantly R&B but would also, like WBLS New York under Frankie Crocker or WXXS-FM (Kiss 108) Boston under Sunny Joe White, spike in everything from "The Stroke" by Billy Squier to "What Kind Of Fool" by Barbra Streisand and Barry Gibb.

Cut to the mid-'80s. There were, at the time, about 20 stations that still represented "urban" in the original sense of the word. But many R&B stations that didn't experiment with pop crossovers also called themselves urban contemporary. And when KPWR (Power 106) Los Angeles came along in 1986, it didn't consider itself urban—although it certainly fit the Frankie/Sunny Joe model. This set in play two other developments. First, the industry scrambled to find another name to which KPWR and its many descendants would willingly answer—thus "top 40/rhythm-crossover." Second, many of the original urban stations reacted to their new competition by dropping pop material, locking up the R&B franchise, and losing the urban format's hybrid nature.

In 1997, the term "rhythm-crossover" is equally confused. Many stations, like KBXX Houston or WERQ (92Q) Baltimore, have evolved to a point where they aren't salt-and-pepper stations, but very hit-driven R&B outlets, while others are poppier than ever. Many of the stations whose focus is dance, rather than R&B, now want to be called something other than rhythm-

crossover, which they consider a euphemism for urban.

"Rhythm-crossover" left us with a chart that was a hybrid of two formats that were, in fact, no longer hybrids. The true salt-and-pepper hybrid in the Frankie/Sunny Joe tradition is a rarity now. Like the country stations that dropped the Eagles' records in the early '90s, well-programmed R&B stations found they could be mass-appeal without diluting their focus or jeopardizing their core. And some rhythmic top 40s are now defined less by playing a lot of divergent music than by a narrower-than-ever musical focus on pop/dance.

So even if one had been able to remove the question of what to call WERQ, KBXX, or WPGC-FM from this mix, there was still the issue of a resulting rhythm-crossover chart that didn't look like any of the stations it featured. That quandary was at the core of our decision to offer both a Rhythmic Top 40 and a Crossover chart. Both halves of that universe now have a chart that's more specifically useful than the previous hodge-podge. And the industry has a chart that measures the area on the cusp of top 40 and R&B with very clear criteria.

More than 11 years after the debut of KPWR, one would like to think that this is finally the end of the name game. But at some point, we'll probably see another highly influential station that flavors its R&B with some pop crossovers and presents the industry with another acid test. In the meantime, it's still not as easy as one would like to find rock and R&B music together even at mainstream top 40—the one format that's always supposed to be a hybrid. The record industry has asked for a chart that will showcase potential R&B crossovers to top 40 PDs. One can now only hope that the new crossover chart lives up to its name.

ON THE AIR

Effective this week, WYJB Albany, N.Y. (PD Mike Morgan, MD Chris Holmberg, 518-786-6600), is added to adult contemporary, and adult top 40 reporters WKZL Greensboro, N.C., and WMXB Richmond, Va., become dual reporters to modern adult. WBTT Dayton, Ohio (PD Jeff Ballentine, MD Raye Kimberline, 937-457-0945), is added to crossover and R&B mainstream, and KKDM Des Moines, Iowa, moves from top 40/mainstream to modern rock. WLIR Long Island, N.Y., which was out due to monitoring-site problems, returns as a modern adult and modern rock reporter. There are now 89 top 40 mainstream, 55 AC, 36 modern adult, and 52 crossover reporters.

THIS WEEK IN TOP 40 AIRPLAY MONITOR

- | | | | |
|----|------------------|----|--------------------|
| 7 | GREATEST GAINERS | 24 | ADULT TOP 40 |
| 8 | MAINSTREAM | 26 | ADULT CONTEMPORARY |
| 16 | RHYTHMIC TOP 40 | 28 | MODERN ADULT |
| 20 | CROSSOVER | 29 | THE BIG PICTURE |

KMEL San Francisco AMD Dave Daniels is filling the MD/nights job temporarily as Kim Kaplan goes to afternoons.

KUBE Seattle afternoon jock Eric Powers adds APD stripes... Hot AC WYXR (Star 104.5) Philadelphia middayer Porsche Fox exits.

WJBQ (Q97.9) Portland, Maine, taps MD/night jock Keith Scott from WZRT Rutland, Vt., replacing Jay Matthews.

WNCI Columbus, Ohio, promotions assistant Ross Kuhns is upped to promotions director, re-

moving one extra hat from the head of APD/MD Neal Sharpe. Programming assistant LauraLee Brigode moves down the hall as promotions assistant. PD John Dimick needs a replacement.

WSNX Grand Rapids, Mich., promotion director Mary Helen Ciaravino is named promo coordinator at classic rock WCSX Detroit.

Longtime WFLZ Tampa, Fla., marketing director Devon Dingley takes those duties for the crosstown UPN affiliate.

New Chart Positions For Faison, Graybow

Effective immediately, Datu Faison and Steve Graybow are promoted to the newly created associate director of charts position for R&B and Top 40 Airplay Monitor, respectively.

Faison, who has been Airplay Monitor's R&B chart manager for the last year, joined its sister publication Billboard in 1994 as manager of its rap, jazz, gospel, and world music charts, all of which he continues to oversee with the exception of world music. He is also serving as co-manager of Airplay Monitor's new Crossover chart and is overseeing its new National Airplay and Regional charts.

Graybow is an eight-year veteran of Billboard and Airplay Monitor. He's been manager of those publications' adult contemporary chart since before its conversion to

Broadcast Data Systems monitoring and through its split into AC and adult top 40 charts. He's also been managing the new modern adult chart since its addition to Airplay Monitor last May. In addition, Graybow writes the Personnel File industry news column in Rock Airplay Monitor.

Both Faison and Graybow will continue to handle their present Billboard and Airplay Monitor chart duties.

"Steve and Datu were already two of the hardest working men at Airplay Monitor," says editor in chief Heston Hosten. "Their new titles are a reflection of their expanded workload and their ongoing dedication to continuing to build Airplay Monitor's place in the industry and providing customer service."



GRAYBOW



FAISON

Casey Comes Calling



A man who prides himself on his exhaustive show prep, air personality Casey Kasem, center, with WFLZ Tampa, Fla., PD/morning guy BJ Harris, left, and partner MJ Kelli, is already in Florida, deep in rehearsals to host the Billboard/Airplay Monitor Radio Awards, Oct. 18 at the Renaissance Orlando Resort. Kelli has just been informed that Kasem is staying at his house until the convention.



WHAT'S NEWS

by Theda Sandiford-Waller

212-536-5053 • theda@billboard.com

Jim Payne Moves To Arista Rep Spot

MUSICAL CHAIRS: Capitol's Atlanta promo dude, **Jim Payne**, exits to join Arista as its mid-Atlantic rep . . . Former radio guy **Mike Ring** exits as Southwest regional for Sony's 550 Music and segues to similar duties at Sony's start-up country label, Monument Records. Former Epic West Coast pop regional **Pam Newman** also joins Monument for similar duties . . . **Debbie Berman** is named director of merchandising for Sony Music Distribution . . . As part of Island's restructuring last week, national singles sales manager **C.C. Sofronas** is on the loose. Reach her at 212-751-1757 . . . Relativity's **Pete Manriquez** (another former radio guy) exits his national mix-show manager gig.

ARTIST MONITOR: Even though they're too young to grow their own, the members of Mercury recording act **Hanson** will model milk mustaches for a new "Got Milk?" print ad shoot by **Annie Leibovitz** . . . **Sean "Puffy" Combs** tells us that **Sting** was so impressed with his use of "Every Breath You Take" in "I'll Be Missing You" that he asked the hip-hop remixer to collaborate with him in the future . . . Columbia's **Maxwell** performed a cover of **Kate Bush's** "This Woman's Work" at his Radio City Music Hall debut July 11.

SILVER SCREEN: **Tom Petty** has nabbed a part in "The Postman," a futuristic action adventure directed by **Kevin Costner** . . . The filmmakers behind "Hoop Dreams," **Steve James** and **Peter Gilbert**, will collaborate on a biopic of hip-hop pioneers **Grandmaster Flash** and **Melle Mel** . . . **Erykah Badu** will make her film debut as a jazz diva in the forthcoming sequel to "The Blues Brothers," scheduled for release next spring. On Aug. 11, Badu will tape a performance on the soap "One Life To Live" to air in September . . . Not to be outdone by **Master P's** direct-to-video release, "I'm Bout It," **Snoop Doggy Dogg** has written a film called "Doin' Too Much." In other silver-screen news, **Mike Mills** of **R.E.M.** will compose the score for the film "A Cool, Dry Place." R.E.M. will record a song for the soundtrack . . . "Hype," the documentary about the Seattle grunge scene, will be released on video Sept. 28.

RADIO CONCERT MONITOR

DATE	CALL LETTERS	EVENT	SCHEDULED TO APPEAR
July 26	WKRQ Cincinnati	One Earth 2	Barenaked Ladies, Ziggy Marley & the Melody Makers, OMC, Sister Hazel, Kyle Vincent
July 27	WKQI Detroit	Q Summer Concert	10,000 Maniacs, Blessid Union Of Souls, Billy Mann, Night Ranger, Kyle Vincent, Jamie Walters
Aug. 1	KUBE Seattle	Summer Jam	112, Aaliyah, BLACKstreet, Ginuwine, Lurnea, Billy Lawrence, Rome, Salt-N-Pepa, Wyclef Jean & Refugee Allstars, more
Aug. 9	KMEL San Francisco	Summer Jam	112, Aaliyah, Foxy Brown, Cypress Hill, Faith Evans, Ginuwine, Dru Hill, Billy Lawrence, Mint Condition, Nuyorican Soul, Redman/Method Man, Richie Rich, Scarface, more
Aug. 10	KKBT Los Angeles	Fourth Summer Jam	112, Aaliyah, BLACKstreet, Foxy Brown, Comrads, DJ Quik, Warren G, Ginuwine, Dru Hill, Adina Howard, Shaquille O'Neal, Suga Free, Whoridas, more
Aug. 23	WKRQ Cincinnati	One Earth 3	10,000 Maniacs, Meredith Brooks, Del Amitri, Abra Moore, more
Aug. 27	WBLI Long Island, N.Y.	End of Summer Jam	TBA
Aug. 30	WQZQ Nashville	First Birthday	TBA
Sept. 6	WZJM Cleveland	Summer Extension Jam 8	DJ Company, Nu Flavor, 3rd Party, more
Sept. 20	KVSR Fresno, Calif.	First Birthday	Mexico 70, more TBA

Let us monitor your event! Kevin Carter: 213-525-2303 or E-mail KCarter@billboard.com

Artist Valet-Parks Dancers; Police Baffled



Thump Records artist **Katalina** and entourage narrowly escape being flattened by a hotel courtesy van during a recent photo op. Pictured, from left, are dancers **Taryn Manning** and **Amy Gant**, **Katalina**, **Thump's Mike Karsting**, and **XHTZ (Z90) San Diego PD Lisa Vazquez**.

EDITOR IN CHIEF: HESTON HOSTEN
 EDITOR: SEAN ROSS
 MANAGING EDITOR: KEVIN CARTER
 DIRECTOR OF CHARTS: THEDA SANDIFORD-WALLER
 ASSOCIATE DIRECTOR OF CHARTS: STEVEN GRAYBOW
 WRITER/REPORTER: DANA HALL
 CHART PRODUCTION MANAGER: MICHAEL CUSSON
 ASST. CHART PRODUCTION MANAGER: ALEX VITOULOS
 EDITORIAL PRODUCTION MANAGERS: BARRY BISHIN, MARCIA REPINSKI
 EDITORIAL PRODUCTION: SUSAN CHICOLA, MARC GIAQUINTO
 SARAH JOHNSON, MARIA MANLICIC
 COPY EDITOR: CARL ROSEN
 ADVERTISING PRODUCTION MANAGER: LYDIA MIKULKO
 ASSOC. ADVERTISING PRODUCTION MANAGER: CINDEE WEISS
 ADVERTISING ART DIRECTOR: RAY CARLSON
 ADVERTISING PRODUCTION ARTIST: SHIRA HALFON

GENERAL MANAGER: JON GUYNN
 ACCOUNT MANAGER: GARY NUJELL
 ADVERTISING SERVICES MANAGER: ALYSE ZIGMAN
 SALES ASSISTANTS: EVELYN ASZODI, ERICA BENGTON,
 TODD MAYCHER

EDITORIAL ADVISER: TIMOTHY WHITE
 PRODUCTION DIRECTOR: MARIE GOMBERT
 DIRECTOR OF MARKETING: ELISSA TOMASETTI
 CIRCULATION DIRECTOR: JEANNE JAMIN



PRESIDENT: HOWARD LANDER
 SENIOR VP/GENERAL COUNSEL: GEORGINA CHALLIS
 VICE PRESIDENTS: KAREN OERTLEY, ADAM WHITE
 DIRECTOR OF STRATEGIC DEVELOPMENT: KEN SCHLAGER
 BUSINESS MANAGER: JOELLEN SOMMER

©1997 BPI Communications
 1515 Broadway, New York, NY 10036 212-764-7300
 5055 Wilshire Blvd., 7th floor, Los Angeles, CA 90036 213-525-2300
 For subscriptions call: 800-722-2346

Airplay Monitor reporting panels are based solely on a station's musical content.

One Becomes Two As Rhythm And Crossover Get Their Own Charts

Continued from page 1

have two things in common. Their music is 70%-100% R&B-based and their No. 1 song is spun at least 40 times a week. Eighteen of the crossover reporters were rhythm-crossover reporters; 34 also report to the mainstream R&B chart, meaning that stations such as KBXX (the Box) Houston, WPGC-FM Washington, D.C., and WERQ (92Q) Baltimore—long thought of as part of the rhythm-crossover world—will report next to R&B powerhouses such as KKBT (the Beat) Los Angeles, WJHM (102 Jamz) Orlando, Fla., and WKYS Washington, D.C.

The two new charts have been in development since early May, shortly after Airplay Monitor began enforcing its format guidelines for the first time, moving three stations from the Rhythm-Crossover chart to the Mainstream R&B chart. Airplay Monitor made that move because it felt that it could no longer equitably have two stations playing nearly identical music reporting to two panels, and that our previous solution, making five stations dual reporters to both panels, worsened the inequity.

In the discussions that ensued, however, even those label executives who were willing to concede the similarities between rhythm-crossover reporter WPGC and WKYS still felt that a rhythm-crossover chart without R&B-based stations would make it harder for them to take R&B records to mainstream top 40. That's when Airplay Monitor began developing a chart to more accurately measure the area on the cusp of rhythmic top 40 and mainstream R&B.

The resulting Crossover chart is meant to measure a musically cohesive, hit-driven universe of stations, all of which concentrate almost exclusively on R&B music but have a weekly spin count that is in the neighborhood of their top 40 rivals. Meanwhile, the revamped Rhythmic Top 40 chart, while still featuring many stations with a heavy R&B lean, will also show a more cohesive universe of stations and will still feature as many reporters as the Rhythm-Crossover chart did as recently as 18 months ago.

While Airplay Monitor was concerned about the effect of having yet another chart, we felt that both rhythmic top 40 and crossover stations would respond positively to charts that looked more like their radio stations and that

the record industry, which was finding only a few consensus hits that both hip-hop-leaning WQHT (Hot 97) New York and its dance-pop rival WKTU could play, would react favorably to a chance to create more stories on both dance-pop and R&B titles. And after a month of pitching the new chart to labels and the stations involved, including many of the most vocal critics of format definitions, the response has been highly positive, with many labels suggesting that the new chart will allow top 40 and R&B departments to work together in a way that many did not with the previous dual reporters system.

Although the new Crossover chart is a BDS custom chart that, like our recently unveiled Adult Modern chart, measures the intersection of several formats, it will have the same features as full-fledged Airplay Monitor charts, including an Impact page, Greatest Gainers, a Song Activity page, and a full complement of playlists (see page 22).

The chart history for the Rhythmic Top 40 chart will be carried over from the previous Rhythm-Crossover chart, reflecting its previous week's numbers and "weeks on chart" tally. The new crossover chart will also use the "weeks on chart" numbers from Rhythm-Crossover on previously charted songs, but its "last week" column refers to test charts that have been circulating throughout the industry for several months.

The reporting stations chosen for the two new charts were based on our criteria as reflected by those stations at the beginning of May, when these panels were designed, and at the beginning of July, when they were finalized. Recognizing that station music policies change and evolve, Monitor will continue to look at potential reporters on an ongoing basis with the industry's input.

Theda Sandiford-Waller (212-536-5053) will serve as chart manager for the Rhythmic Top 40 chart. Sandiford-Waller and newly promoted associate director of R&B charts Datu Faison (212-536-5271) will share Crossover chart duties. Feedback on the new charts can be also be directed to Airplay Monitor editor in chief Heston Hosten (212-536-5239) or editor Sean Ross (212-536-5264).

A full panel for the two new charts follows:

NEW MONITOR PANELS

CROSSOVER (52)

Albuquerque, N.M.	KYLZ	Jacksonville, Fla.	WJBT
Atlanta	WHTA	Lafayette, La.	KRRQ
Augusta, Ga.	WFXA	Las Vegas	KLUC
Baltimore	WERQ	Los Angeles	KKBT
Birmingham, Ala.	WBHJ		KPWR
Boston	WJMN	Louisville, Ky.	WGBZ
Charlotte, N.C.	WPEG	Miami	WPOW
Charleston, S.C.	WVWZ	Milwaukee	WKVY
Chattanooga, Tenn.	WKOU	Mobile, Ala.	WYOK
Chicago	WEJM	Monterey, Calif.	KDON
	WGCI	New Orleans	WQUE
Cincinnati	WIZF	New York	WQHT
Columbus, Ohio	WCXK	Orlando, Fla.	WJHM
Dallas	KKDA	Philadelphia	WPHI
Dayton, Ohio	WBTT		WUSL
	WROU	Phoenix	KKFR
Denver	KQKS	Providence, R.I.	WVWX
Detroit	WJLB	Raleigh, N.C.	WQOK
Fresno, Calif.	KBOS	Roanoke, Va.	WJJK
Greenville, S.C.	WJMZ	San Diego	XHTZ
Greensboro, N.C.	WJMH	San Francisco	KMEL
Honolulu	KIKI		KYLD
	KQMQ	Seattle	KUBE
Houston	KBXX	Washington, D.C.	WKYS
Indianapolis	WHHH		WPGC
Jackson, Miss.	WJMI	Wichita, Kan.	KDGS

RHYTHMIC TOP 40 (34)

Albuquerque, N.M.	KKSS	Monterey, Calif.	KDON
Bakersfield, Calif.	KYLZ	New Bedford, Mass.	WFHN
Boston	KQXX	New York	WKTU
Chattanooga, Tenn.	WJMN	Norfolk, Va.	WVNZ
Chicago	WKOU	Oxnard, Calif.	KCAQ
Corpus Christi, Texas	WBMM	Philadelphia	WIOQ
Denver	KZFM	Phoenix	KKFR
Detroit	KQKS	Providence, R.I.	WVWX
El Paso, Texas	WDRQ	Riverside, Calif.	KGGI
Fresno, Calif.	KPRR	Roanoke, Va.	WJJK
Honolulu	KBOS	Sacramento, Calif.	KFSM
	KIKI	San Antonio, Texas	KTFM
Indianapolis	KQMQ	San Diego	XHTZ
Las Vegas	WHHH	San Francisco	KYLD
Los Angeles	KLUC	Seattle	KUBE
Miami	KIBB	Tucson, Ariz.	KOHT
	WPOW	Wichita, Kan.	KDGS

MONITOR PROFILE

Shebel And Company Power PRO-FM Back To The No. 1 Spot In Providence

Ask any sales manager. Twelve-plus numbers may not feed the bulldog, but Chris Shebel seems to be having a hard time hiding his satisfaction with the first 12-plus No. 1 book of his career. After a long, cold winter with his station frozen in fifth place, heritage top 40 WPRO-FM Providence, R.I., thawed out and heated up to a 7.8 share in the spring.

"This is especially gratifying for me personally," says Shebel. "The only way we would have hit No. 1 [at WDJX Louisville, Ky.] was if we wore cowboy boots."

After on-air stunts at the late WXGT (92X) Columbus, Ohio, and WLS Chicago ("Talk about scary. I did middays between Larry Lujack and Tommy Edwards"), Shebel worked with Guy Zapoleon at KZZP Phoenix, then crossed the street for mornings at album rock KDKB (The greatest mistake of my life," he says. "I had fantasized about doing album rock, but I just didn't fit the format."). His first PD gig was at WLXR (Hot 105), La Crosse, Wis. Six months later, former KZZP PD-turned-Drake Chenault consultant Charlie Quinn asked Shebel to program in Louisville.



Chris Shebel
Program Director
WPRO-FM Providence, R.I.

'Our listeners should be using us as a utility, not just as a music box'

"Is that where the horses are?" Shebel recalls asking.

Nine years later, in '95, Shebel got a call from WPRO consultant Harve Blain and accepted the PD position on his birthday, Oct. 18. A minor dose of culture shock soon followed. "These two regions are worlds apart," he says. "The South is probably the friendliest part of the country; coming to New England, it took a little longer to ingratiate myself into the market." Once categorized as a blue-collar community, Providence is a working-class city in Boston's shadow. Thanks to an extensive revitalization of downtown, those preconceived images are changing for the better, Shebel says.

"If you look at any Arbitron book, you'll see 15 to 20 points in this market go to below-the-line stations in Boston; Worcester, Mass.; even New York at times," says Shebel. "One thing I quickly learned about this market is that many Rhode Island people are born, raised, and die here; they're not very concerned about what goes on in Boston, with the possible exception of the Boston TV stations on local cable."

That's not to say Shebel doesn't pay attention to his neighbor to the north. "If [WXKS PD] John Ivey is having success with a particular song, I'll naturally watch it," says Shebel, who notes that Boston-area calls to his request lines have increased markedly over the past several months. "With that market leaning further into the adult alternative arena, maybe people are turning to us to hear some of the dance stuff that we play."

Those who believe that Shebel steered WPRO-FM into the pop/dance world after his arrival are not entirely correct. He says, "I felt the station was leaning too alternative. I simply took it back to the middle. I felt the beauty

and the strength of WPRO-FM was its 22-year history as a market institution. I needed to take this station back to what it was famous for: the best songs, the best personalities on the air, the best contesting, and the best marketing... My mission was to throw out the liner cards and steal the best songs from everybody else."

Here's a stolen 3 p.m. hour on WPRO-FM: Third Eye Blind, "Semi-Charmed Life"; Faithless, "Insomnia"; Bryan Adams, "Please Forgive Me"; Sheryl Crow, "A Change Will Do You Good"; Verve Pipe, "The Freshmen"; Taylor Dayne, "Prove Your Love"; Mighty Mighty Bosstones, "The Impression That I Get"; Backstreet Boys, "Quit Playing Games (With My Heart)"; Blues Traveler, "Run-Around"; R. Kelly, "Gotham City"; Savage Garden, "I Want You"; Brandy, "Sitting Up In My Room"; and Jewel, "Foolish Games."

On July 4, Tele-Media sold its Providence properties to Citadel, including WPRO-AM-FM, nostalgia WLKW, and once-perennial No. 1 WWLI, now No. 2 to WPRO-FM. The company is also in the process of acquiring modern rock WDGE (the Edge) and rhythmic WDFG (the Beat), whose owner, Phillip Urso, was recently named GM of the Citadel combo.

Mike Butts and wife Lisa (the programmer formerly known as Lisa Tonacci) do mornings with producer Beth Hale, sidekick Alfredo, and a bunch of interns. Early middays is handled by station veteran Giovanni, followed by Shebel (aka Chris Hamilton), "the 120 most fun minutes on the radio," he jokes. When 14-year vet Tony Mascaro took the MD slot at WPLJ New York, Shebel tapped Rob Hayes from nearby WKCI (KC101) New Haven, Conn., to replace him in afternoons. (Ed. note: Mascaro still owns a house in town, and his presence is still very apparent. "We're having our No. 1 book party at his house," says Shebel. "He has the biggest yard.") Danny Wright is doing nights, by way of WBLI Long Island, N.Y. And after six years doing P/T, Tanya Cruise was recently hired for overnights. "I just found out that Tanya is the first solo full-time woman on the air staff since WPRO-FM signed on," says Shebel. Rob Hogan, a veteran of Boston radio, is the station's promotion and marketing director.

"Some stations run so clean and error-free that they're statistically perfect, but not a living, breathing entity," Shebel says. "I encourage my staff to study full-service stations, their stature and presence, to see how they often become the station of record in their market. I want them to apply those principles of credibility and longevity to what we do here. Our listeners should be using us as a utility, not just as a music box. I've never gone out to a club and had someone tell me, 'You guys have great liners,' or 'You play the most music in row,' or 'You pick me and make me feel good.' They usually say, 'I loved what Mike and Lisa said this morning.'"

Even though WPRO-FM enjoys 22 years of accumulated history, Shebel knows he can't afford to leave any element of his station on autopilot. "The degree of responsibility to this station is quite large," he says. "Even before I accepted this job, I kept thinking, 'What if something goes wrong? Do I want to be known as the guy who tubed WPRO-FM?'" To add to the station's unique mystique, former WPRO-FM PD-turned-consultant Gary Berkowitz sent Shebel a note on his first day that he swears he looks at every morning: "She's a very special lady—take care of her." Also on Shebel's office wall is a hand-lettered sign that he takes everywhere with him. It says, simply, "Radio is fun." **KEVIN CARTER**

SPRING '97 ARBITRONS

12-plus overall average quarter hour shares (#) indicates Arbitron market rank. Copyright 1997, Arbitron Ratings Co. May not be quoted or reproduced without the prior written permission of Arbitron.

Table for SAN FRANCISCO (4) with columns: Call, Format, Sp '96, Su '96, F '96, W '97, Sp '97. Includes stations like KGO, KQES, KRCC, etc.

Table for MINNEAPOLIS/ST. PAUL (16) with columns: Call, Format, Sp '96, Su '96, F '96, W '97, Sp '97. Includes stations like WCCO, KQRS-AM-FM, KTWB, etc.

Table for DALLAS (7) with columns: Call, Format, Sp '96, Su '96, F '96, W '97, Sp '97. Includes stations like KKDA-FM, KHKS, KSCS, etc.

Table for ST. LOUIS (17) with columns: Call, Format, Sp '96, Su '96, F '96, W '97, Sp '97. Includes stations like KMOX, WIL, KJIM, etc.

Table for WASHINGTON, D.C. (8) with columns: Call, Format, Sp '96, Su '96, F '96, W '97, Sp '97. Includes stations like WKYS, WHUR, WPGC-FM, etc.

Table for BALTIMORE (19) with columns: Call, Format, Sp '96, Su '96, F '96, W '97, Sp '97. Includes stations like WERQ, WBAL, WTOP, etc.

Table for HOUSTON (9) with columns: Call, Format, Sp '96, Su '96, F '96, W '97, Sp '97. Includes stations like KKDA, KBXK, KRBE, etc.

Table for PITTSBURGH (20) with columns: Call, Format, Sp '96, Su '96, F '96, W '97, Sp '97. Includes stations like N/A, WYVE, WDSY-AM-FM, etc.

Table for MIAMI (11) with columns: Call, Format, Sp '96, Su '96, F '96, W '97, Sp '97. Includes stations like WPOW, WHOT, WEDR, etc.

Table for TAMPA, FLA. (21) with columns: Call, Format, Sp '96, Su '96, F '96, W '97, Sp '97. Includes stations like WFLZ, WQYK-FM, WDLV, etc.

Table for CINCINNATI (25) with columns: Call, Format, Sp '96, Su '96, F '96, W '97, Sp '97. Includes stations like WLW, WUBE-FM, WBSB, etc.

Table for SACRAMENTO, CALIF. (28) with columns: Call, Format, Sp '96, Su '96, F '96, W '97, Sp '97. Includes stations like KFBC, KZZO, KFSM, etc.

Table for SAN JOSE, CALIF. (30) with columns: Call, Format, Sp '96, Su '96, F '96, W '97, Sp '97. Includes stations like KGO, KEZR, KYLD, etc.

Table for COLUMBUS, OHIO (32) with columns: Call, Format, Sp '96, Su '96, F '96, W '97, Sp '97. Includes stations like WCOL-FM, WYCI, WWSY, etc.

Table for CHARLOTTE, N.C. (37) with columns: Call, Format, Sp '96, Su '96, F '96, W '97, Sp '97. Includes stations like WPEG, WSOQ-FM, WLYT, etc.

Table for CLEVELAND (22) with columns: Call, Format, Sp '96, Su '96, F '96, W '97, Sp '97. Includes stations like WGLA, WZLX, WYLN, etc.

Table for DENVER (23) with columns: Call, Format, Sp '96, Su '96, F '96, W '97, Sp '97. Includes stations like NOA, N/GO-FM, KRSI, etc.

Table for HARTFORD, CONN. (42) with columns: Call, Format, Sp '96, Su '96, F '96, W '97, Sp '97. Includes stations like WRCH, WTM-AM, WWTZ, etc.

Table for WEST PALM BEACH, FLA. (49) with columns: Call, Format, Sp '96, Su '96, F '96, W '97, Sp '97. Includes stations like WPTZ, WYBF, WYRK, etc.

Table for FRESNO, CALIF. (64) with columns: Call, Format, Sp '96, Su '96, F '96, W '97, Sp '97. Includes stations like KNJ, KBOB, KNSR, etc.

Table for AKRON, OHIO (67) with columns: Call, Format, Sp '96, Su '96, F '96, W '97, Sp '97. Includes stations like WQNX, WYMI, WYOT, etc.

Table for WILMINGTON, DEL. (74) with columns: Call, Format, Sp '96, Su '96, F '96, W '97, Sp '97. Includes stations like WJBR-FM, WSTW, WYSP, etc.

Table for TOLEDO, OHIO (75) with columns: Call, Format, Sp '96, Su '96, F '96, W '97, Sp '97. Includes stations like WKKO, WKNS, WYOT, etc.

Table for SPRINGFIELD, MASS. (77) with columns: Call, Format, Sp '96, Su '96, F '96, W '97, Sp '97. Includes stations like WYMS-FM, WYAO-FM, WYAX, etc.

Table for MONTEREY, CALIF. (78) with columns: Call, Format, Sp '96, Su '96, F '96, W '97, Sp '97. Includes stations like KDON, KGO, KDOM-AM-FM, etc.

Table for SARASOTA, FLA. (79) with columns: Call, Format, Sp '96, Su '96, F '96, W '97, Sp '97. Includes stations like WDUV, WFLZ, WHTP, etc.

Table for STOCKTON, CALIF. (85) with columns: Call, Format, Sp '96, Su '96, F '96, W '97, Sp '97. Includes stations like KATM, KWIR/KWNN, KQOD, etc.

Table for COLORADO SPRINGS (95) with columns: Call, Format, Sp '96, Su '96, F '96, W '97, Sp '97. Includes stations like KJMG, KJCS-AM-FM, KJCM, etc.

Table for NEW HAVEN, CONN. (97) with columns: Call, Format, Sp '96, Su '96, F '96, W '97, Sp '97. Includes stations like WPLR, WICI, WELI, etc.

AIRPLAY Monitor[®] GREATEST GAINERS

MM
Broadcast Data Systems

Strongest Increase In Airplay This Week

MAINSTREAM

INCREASE
IN PLAYS

HANSON • <i>Where's The Love</i> (MERCURY)	+682
KHOM +36, WWHT +31, WLKT +30, KHIT +30, WRVQ +28, WPRO +23, WTWR +20, KRUF +19, KHKS +19, WIXX +18	
JEWEL • <i>Foolish Games</i> (ATLANTIC)	+540
KZZU +28, KDWB +27, KHOM +24, WXXX +21, WNTQ +21, WGTZ +19, WPXY +19, WPRO +19, WBHT +16, WNNK +16	
SPICE GIRLS • <i>2 Become 1</i> (VIRGIN)	+538
WQSL +31, WLKT +24, WZST +23, KMXV +18, KZZU +18, WPRO +18, WZPL +18, KIIS +18, WXKB +17, WXIS +16	
WILL SMITH • <i>Men In Black</i> (COLUMBIA)	+484
WLKT +41, KHIT +32, WWZZ +30, WKSE +27, WXYV +27, KDWB +27, WQZQ +24, KRUF +20, WZYP +19, WVKS +18	
MATCHBOX 20 • <i>Push</i> (LAVA/ATLANTIC)	+297
WIXX +19, KDWB +17, WNTQ +16, KKRD +16, WHTZ +15, WBHT +14, KKLQ +14, WVKS +13, WYCR +11, WDDJ +10	
PUFF DADDY & FAITH EVANS (FEAT. 112) • <i>I'll Be Missing You</i> (BAD BOY/ARISTA)	+295
WLKT +51, WWHT +31, KHIT +25, WKSZ +22, WRVQ +17, WBHT +15, WKSE +15, WPRO +14, KKMZ +13, WGTZ +13	
TONIC • <i>If You Could Only See</i> (POLYDORA/A&M)	+239
WKSE +16, WZNY +15, WSSX +13, KKLQ +13, WWHT +10, WDDJ +10, WDCG +10, KESR +9, WZST +9, WPST +9	
THIRD EYE BLIND • <i>Semi-Charmed Life</i> (ELEKTRA/EEG)	+226
WFLY +23, WWHT +17, KKRD +17, WKSZ +16, WBHT +16, KHFI +15, WWCK +14, WPXY +14, WWZZ +13, WBZZ +12	
BACKSTREET BOYS • <i>Quit Playing Games (With My Heart)</i> (JIVE)	+209
WXYV +30, WZJM +26, WSSX +23, WXXL +17, WZPL +14, WSTW +13, WDCX +12, WWHT +11, WJBO +10, KJYO +10	
WILD ORCHID • <i>Supernatural</i> (RCA)	+203
WKSZ +21, KESR +15, WWCK +13, WYCR +13, WCIL +12, WZST +11, KHTO +11, WFLY +11, WQSL +10, KIIS +10	

RHYTHMIC TOP 40

INCREASE
IN PLAYS

SPICE GIRLS • <i>2 Become 1</i> (VIRGIN)	+212
WIOQ +32, KYLZ +22, KBOS +21, WKTU +20, KUBE +18, KDON +16, KGGI +13, KZFM +11, WFHN +11, KTFM +10	
WILL SMITH • <i>Men In Black</i> (COLUMBIA)	+210
KYLZ +43, KCAQ +31, WKQJ +29, KPRR +23, WFHN +22, WDRQ +14, WHHH +14, KGGI +14, WJMN +12, KKFR +11	
INOJ • <i>Love You Down</i> (SO SO DEF/COLUMBIA)	+197
KIKI +40, KQMQ +28, KQKS +23, KLUK +13, XHTZ +13, WPOW +12, WJJS +10, KYLZ +9, WWKX +8, KTFM +8	
GINUWINE • <i>When Doves Cry</i> (550 MUSIC)	+136
KUBE +31, WFHN +21, KIKI +11, WJJS +11, XHTZ +11, KKFR +10, WHHH +9, KQMQ +8, KKSS +8, WNVZ +8	
THE NOTORIOUS B.I.G. • <i>Mo Money Mo Problems</i> (BAD BOY/ARISTA)	+117
KYLZ +29, WKQJ +24, WBBM +17, KPRR +12, WNVZ +12, WPOW +8, WHHH +7, KZFM +6, KKSS +6, KIBB +6	
BACKSTREET BOYS • <i>Quit Playing Games (With My Heart)</i> (JIVE)	+104
KYLZ +40, WDRQ +18, WKQJ +16, WWKX +15, KPRR +12, WJJS +9, KYLD +8, WJMN +8, KIBB +7, KZFM +6	
NU FLAVOR • <i>Heaven</i> (REPRISE)	+98
KYLZ +57, KKSS +12, KTFM +11, WPOW +10, KSFM +8, KLUK +2	
JON B. • <i>Don't Say</i> (Y&B YUM/550 MUSIC)	+95
KDON +15, KGGI +12, WNVZ +11, WHHH +10, KUBE +10, KKSS +9, KTFM +9, KKFR +9, KBOS +6, KLUK +5	
JOE • <i>The Love Scene</i> (JIVE)	+88
KTFM +22, KIBB +9, KKFR +9, KDGS +8, KSFM +8, KDON +7, KBOS +7, XHTZ +5, WJJS +4, KLUK +3	
LOS UMBRELLAS • <i>No Tengo Dinero</i> (EMI)	+83
KPRR +29, KYLZ +19, WPOW +17, KOHT +12, KZFM +9, KTFM +2, KLUK +1, KBOS +1, KKOX +1	

VIDEO PLAYLISTS



		TW	LW
1	Shawn Colvin, Sunny Came Home	37	18
2	Paula Cole, Where Have All The Cowboys Gone?	34	19
3	The Verve Pipe, The Freshmen	33	18
4	The Wallflowers, One Headlight	33	18
5	Meredith Brooks, Bitch	32	20
6	Hanson, Mmmmbop	27	12
7	En Vogue, Whatever	25	12
8	Spice Girls, Say You'll Be There	18	8
9	Dave Matthews Band, Crash Into Me	17	11
10	John Mellencamp, Key West Intermezzo (I Saw You First)	16	7
11	The Cardigans, Lovefool	16	7
12	Lisa Stansfield, Never, Never Gonna Give You Up	16	9
13	Counting Crows, Daylight Fading	15	9
14	Savage Garden, I Want You	15	11
15	The Wallflowers, The Difference	15	9
16	Jon Bon Jovi, Midnight In Chelsea	15	9
17	Spice Girls, 2 Become 1	15	1
18	No Doubt, Don't Speak	14	5
19	Jewel, Foolish Games	14	4
20	Duncan Sheik, Barely Breathing	13	5
21	Sheryl Crow, A Change Would Do You Good	13	5
22	OMC, How Bizarre	11	4
23	En Vogue, Don't Let Go (Love)	10	9
24	Fiona Apple, Criminal	9	5
25	Sheryl Crow, If It Makes You Happy	9	6
26	Third Eye Blind, Semi-Charmed Life	9	4
27	Abra Moore, Four Leaf Clover	9	6
28	Eric Clapton, Change The World	8	7
29	R. Kelly, I Believe I Can Fly	8	4
30	Diana King, I Say A Little Prayer	8	3
31	U2, Last Night On Earth	8	2
32	The B-52's, Love Shack	7	4
33	The Human League, Don't You Want Me	7	1
34	Sheryl Crow, Everyday Is A Winding Road	7	1
35	Blues Traveler, Carolina Blues	7	6

		TW	LW
1	The Notorious B.I.G. (Feat. Puff Daddy & Mase), Mo Money Mo Problems	36	13
2	Prodigy, Breathe	33	19
3	The Wallflowers, The Difference	29	22
4	Will Smith, Men In Black	29	29
5	Sublime, Wrong Way	28	21
6	Scarface Feat. 2Pac & Johnny P, Smile	28	22
7	Sugar Ray, Fly	26	20
8	Aerosmith, Hole In My Soul	23	21
9	Missy "Misdemeanor" Elliott, The Rain (Supa Dupa Fly)	21	20
10	Bone Thugs-N-Harmony, Look Into My Eyes	21	20
11	Oasis, D' You Know What I Mean?	20	0
12	Radiohead, Paranoid Android	19	18
13	Matchbox 20, Push	18	16
14	311, Transistor	17	16
15	Marilyn Manson, Man That You Fear	16	15
16	God's Property, Stomp	16	15
17	R. Kelly, Gotham City	16	16
18	U2, Last Night On Earth	15	6
19	Robyn, Do You Know (What It Takes)	15	12
20	Reel, Place Your Hands	13	12
21	Sheryl Crow, A Change Would Do You Good	13	6
22	The Verve Pipe, Villains	12	16
23	Fiona Apple, Criminal	12	12
24	OMC, How Bizarre	12	4
25	Hanson, Where's The Love	12	7
26	BLACKstreet, Fix	11	9
27	Live, Turn My Head	11	11
28	Jewel, Foolish Games	11	0
29	Tonic, If You Could Only See	10	10
30	Dave Matthews Band, Crash Into Me	10	11
31	The Mighty Mighty Bosstones, The Impression That I Get	10	23
32	Blues Traveler, Carolina Blues	10	9
33	Babyface, How Come, How Long	9	10
34	Rome, I Belong To You (Every Time I See Your Face)	9	14
35	Meredith Brooks, Bitch	9	26
36	Changing Faces, G.H.E.T.T.O.U.T.	9	14
37	Coolio Feat. 40 Thevz, C U When U Get There	9	8
38	Sneaker Pimps, 6 Underground	9	4
39	Spice Girls, 2 Become 1	9	11
40	BLACKstreet (Feat. Dr. Dre), No Diggity	9	3
41	Wyclef Jean Feat. Refugee Allstars, We Trying To Stay Alive	8	11
42	Lil' Kim, Not Tonight	8	9
43	Reel Big Fish, Sell Out	7	5
44	Collective Soul, Listen	7	11
45	En Vogue, Whatever	7	5
46	Wu-Tang Clan, Triumph	7	0
47	Foxy Brown Feat. Dru Hill, Big Bad Mama	6	0
48	Fluke, Atom Bomb	5	5
49	Jonny Lang, Lie To Me	5	9
50	Third Eye Blind, Semi-Charmed Life	5	10

ADULT CONTEMPORARY

INCREASE
IN PLAYS

NATALIE COLE • <i>A Smile Like Yours</i> (ELEKTRA/EEG)	+110
KSFI +16, WAHR +14, KESZ +9, WTCB +8, KTDY +8, KMGZ +8, WDOK +8, WLIF +8, KGBY +6, WALK +5	
BILLY JOEL • <i>To Make You Feel My Love</i> (COLUMBIA)	+104
WINK +22, WBBQ +18, WDOK +13, WLAC +9, WLTV +6, KKCW +6, WMJQ +6, KUDL +5, WALK +5, WLEV +4	
BACKSTREET BOYS • <i>Quit Playing Games (With My Heart)</i> (JIVE)	+91
KIOI +19, WBEB +12, KTDY +8, WRMF +8, WLEV +7, WNNK +7, WASH +6, WALK +5, WLTV +4, KISC +4	
KENNY LOGGINS • <i>I Am Not Hiding</i> (COLUMBIA)	+88
WINK +21, WGSY +13, WARM +10, KTDY +9, KLYF +9, WTCB +4, KISC +4, WLIF +4, WLTV +4, KUDL +3	
SHAWN COLVIN • <i>Sunny Came Home</i> (COLUMBIA)	+82
WFLC +21, WDEF +18, WARM +15, WMJQ +9, KUDL +7, KTHT +7, KLYF +6, WALK +5, KOSI +5, WLAC +5	
ADULT TOP 40	
JEWEL • <i>Foolish Games</i> (ATLANTIC)	+232
WJDX +19, WALC +18, KSMG +17, WKTI +16, WMMX +15, WRVW +14, KISN +12, KBBT +11, WBAM +10, WQLH +10	
PAULA COLE • <i>I Don't Want To Wait</i> (IMAGO/WARNER BROS.)	+191
WALC +38, KBKS +24, WQAL +23, WSHE +21, WJDX +18, WQLH +12, KVSZ +11, WMMX +9, KPEK +7, KBEE +7	
OMC • <i>How Bizarre</i> (HUH!/MERCURY)	+188
WRAL +28, KYSR +24, WMMX +24, KTNP +14, WKZL +14, WMMX +12, WEZB +12, WLNK +12, KMXB +10, WBMX +9	
TONIC • <i>If You Could Only See</i> (POLYDORA/A&M)	+171
WALC +26, KBET +23, WMMX +22, WSHE +22, KTNP +12, WQAL +12, WEZB +10, KLLC +9, WLNK +9, KMXB +8	
HANSON • <i>Where's The Love</i> (MERCURY)	+148
WPLJ +23, WMMX +20, WJDX +20, KPEK +13, KBKS +11, WEZB +9, KSII +7, KHMZ +7, WRVW +6, KZZP +5	

THE WORLD'S #1 PARTY SHOWS™ ... CHOOSE THE SHOW THAT FITS YOUR FORMAT...

HOT MIX CROSSOVER

Hits from:
"Dance"
"Clubs"
"HIT Rap"
"Old School"
"Retro"
Perfect for
Crossover/Rhythm
Stations.

4 HOURS WEEKLY

HOT MIX MAINSTREAM

Similar to
"Crossover"
version without
"Rap" & "Old
School".
Designed for
Mainstream
stations targeting
a slightly older
demographic.

4 HOURS WEEKLY

NEW! HOT MIX MODERN/AC

Current, recurrent
and Classic hits
from Modern Adult
format. Designed
for Hot AC stations
targeting 25-49
demographic.

4 HOURS WEEKLY

NEW! HOT MIX RHYTHMIC AC

Current, recurrent
and classic hits
from Rhythmic Adult
format. Designed
for Hot AC stations
targeting 25-49
demographic.

4 HOURS WEEKLY

MODERN MIX

The biggest
Alternative/Modern
Rock hits.
Perfect for the
Modern Rock
format.

4 HOURS WEEKLY

RETROMIX

The hottest
hits from the
late 70's, 80's &
early 90's.
A compliment to
"Crossover" &
"Mainstream".

1 HOUR WEEKLY

NEW! RESURRECTION MIX

The biggest
Modern Classic
80's hits.
Great for
Adult Alternative
& Modern Rock
formats.

1 HOUR WEEKLY



FOR DEMOS & INFO

Phone: 602-947-6500

E-mail: info@hotmix.com

PERFECT FOR LUNCH TIME, DRIVE TIME, NIGHTS & WEEKENDS
ALL PROGRAMS MIXED BEAT-TO-BEAT & BACK-TO-BACK™ - UNHOSTED DELIVERED ON CD!

www.hotmix.com/radio

POWER PLAYLISTS

For Week Ending July 20, 1997



Playlists supplied by Broadcast Data Systems Radio Track service. Songs ranked by number of plays in monitored week. Playlists are listed in order of total weekly counts, beginning with the highest-counting station. Counts are updated twice weekly following the release of the Spring and Fall Arbitron surveys. The number of stations shown each week varies depending upon space.

Main content table with 16 columns representing radio stations (Z100, KIIS, KISS 108, KISS 106.1, Z104, KRBE, WFLZ, STAR 94, KDWB, B94, WPST, Y100, KISS 95.7, WNCI, Q102, Z100, JAMMIN' 92, XL106.7) and rows of song titles and play counts.

Vanessa Williams "happiness"

the first single
from her new album

Next

Impacting Now!

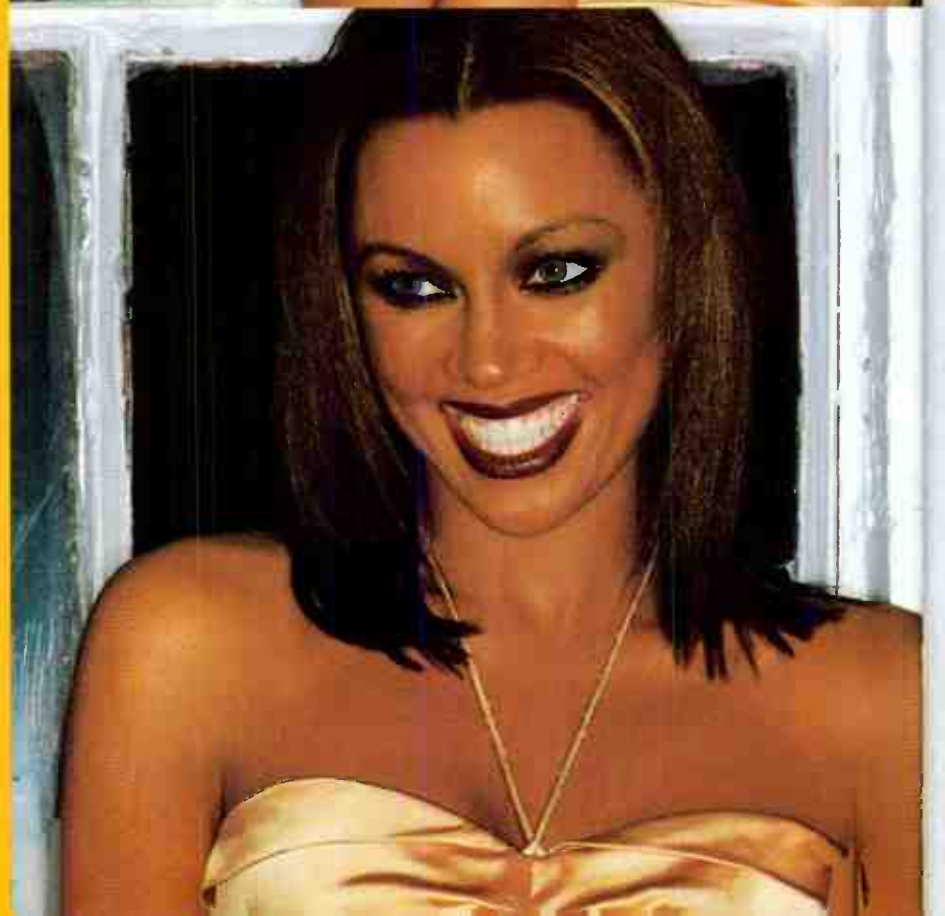
MANAGEMENT BY
JOHN DUKAKIS • QADREE CULMIN
FOR

Southwest
RECORDS



Produced and Arranged by Jimmy Jam and Terry Lewis
for Flyte Tyme Productions, Inc.

World Radio History



POWER PLAYLISTS

For Week Ending July 20, 1997

Playlists supplied by Broadcast Data Systems... Radio Track service... Songs ranked by number of plays in monitored week...

G105 WDCG Raleigh OM: Brian Burns PD: Kip Taylor. Playlist with 40 items including 'Barenaked Ladies, Brian Wilson' and 'Dave Matthews Band, Tripping Billies'.

KISS 95.1 WNKS Charlotte PD: Brian Bridgman MD: Marcie Crescente. Playlist with 40 items including 'Meredith Brooks, Bitch' and 'Backstreet Boys, Quit Playing Games'.

PRO-FM WPRO Providence PD: Chris Shebel MD: Davey Morris. Playlist with 40 items including 'Meredith Brooks, Bitch' and 'Backstreet Boys, Quit Playing Games'.

ALICE 106 KALC Denver PD: Gregg Cassidy MD: Cha Cha. Playlist with 40 items including 'Sister Hazel, All For You' and 'DMC, How Bizarre'.

MIX 93.3 KMXV Kansas City PD/MD: Jon Zellner. Playlist with 40 items including 'Meredith Brooks, Bitch' and 'Duncan Sheik, Barely Breathing'.

MIX 104.1 KHOM New Orleans PD: Bill Thorman. Playlist with 40 items including 'Will Smith, Men In Black' and 'Romeo, I Belong To You'.

WXVY PD: Dave Ferguson APD: Throb. Playlist with 40 items including 'Hanson, MmmBop' and 'Puff Daddy & Faith Evans Feat., I'll Be'.

WIXX PD: Dan Stone MD: David Burns. Playlist with 40 items including 'Backstreet Boys, Quit Playing Games' and 'Sister Hazel, All For You'.

WZPL PD: Tom Gjerdrum MD: Dave Decker. Playlist with 40 items including 'Hanson, MmmBop' and 'The Wallflowers, One Headlight'.

Q106 KKLQ San Diego PD: Mark Todd MD: Cyndi Spicer. Playlist with 40 items including 'Robyn, Do You Know What It Takes' and 'Shawn Colvin, Sunny Came Home'.

WBLI PD: Ken Medek MD: Al Levine. Playlist with 40 items including 'Le Click, Call Me' and 'Jocelyn Enriquez, Do You Miss Me'.

KISS 98.5 WKSE Buffalo APD/MD: Dave Universal. Playlist with 40 items including 'Various Artists, The Jack Jam' and 'The Verve Pipe, The Freshmen'.

KHFI PD: John Roberts APD: Krash Kelly MD: Fernando Ventura. Playlist with 40 items including 'Blackstreet, Don't Leave Me' and 'DMC, How Bizarre'.

WSTW PD: Mike Sommers MD: Mike Rossi. Playlist with 40 items including 'Sister Hazel, All For You' and 'The Verve Pipe, The Freshmen'.

FLY 92 WFLY Albany PD: Mike Morgan MD: Ron "Sugarbear" Williams. Playlist with 40 items including 'Robyn, Do You Know What It Takes' and 'Meredith Brooks, Bitch'.

KJ103 KIYO Oklahoma City PD: Mike McCoy MD: Joe Friday. Playlist with 40 items including 'Third Eye Blind, Semi-Charmed Life' and 'Duncan Sheik, Barely Breathing'.

98PXY WPMY Rochester OM/MD: Clarke Ingram APD/MD: J.J. Rice. Playlist with 40 items including 'Hanson, MmmBop' and 'Meredith Brooks, Bitch'.

Z93 WGTZ Dayton OM: Michael Luczak MD: Dani Steele. Playlist with 40 items including 'Robyn, Do You Know What It Takes' and 'Puff Daddy & Faith Evans Feat., I'll Be'.

POWER PLAYLISTS

For Week Ending July 20, 1997



Playlists supplied by Broadcast Data Systems' Radio Track service. Songs ranked by number of plays in monitored week. Playlists are listed in order of TBS weekly came, beginning with the highest-cumulating station. Cumes are updated twice yearly following the release of the Spring and Fall Arbitron surveys. The number of stations shown each week varies depending upon space.

93Q WNTQ Syracuse PD: Tom Mitchell MD: Jimmy Olsen. Top 40 playlist including songs like 'Mercedith Brooks, Bitch' and 'OMC, How Bizarre'.

WKRZ Wilkes-Barre PD: Tony Banks APD/MD: Jerry Padden. Top 40 playlist including songs like 'Tonic, If You Could Only See' and 'Sister Hazel, All For You'.

WVKS Toledo VP/Prgm: Mike Wheeler APD/MD: Bill Michaels. Top 40 playlist including songs like 'Shawn Colvin, Sunny Came Home' and 'Sister Hazel, All For You'.

B104 WAEB Allentown PD: Brian Check MD: Chuck McGee. Top 40 playlist including songs like 'The Wallflowers, One Headlight' and 'Sister Hazel, All For You'.

WDJX Louisville PD: C.C. Matthews APD/MD: Karen Rite. Top 40 playlist including songs like 'Mercedith Brooks, Bitch' and 'Mark Morrison, Return Of The Mack'.

B93.7 WFBC Greenville, SC PD: Rob Wagman MD: J. Love. Top 40 playlist including songs like 'Spice Girls, Say You'll Be There' and 'Third Eye Blind, Semi-Charmed Life'.

WAPE Jacksonville PD: Cat Thomas APD/MD: Tony Mann. Top 40 playlist including songs like 'OMC, How Bizarre' and 'Mercedith Brooks, Bitch'.

B104 KBFM McAllen OM: Billy Santiago PD/MD: Jeff DeWitt. Top 40 playlist including songs like 'Hanson, Mmmbo' and 'Blackstreet, Don't Leave Me'.

WSNX Grand Rapids PD: John Thomas MD: Keith Curry. Top 40 playlist including songs like 'Mark Morrison, Return Of The Mack' and 'Mercedith Brooks, Bitch'.

WZYP Huntsville PD: Marc Summers MD: Chris Callaway. Top 40 playlist including songs like 'Shawn Colvin, Sunny Came Home' and 'Sheryl Crow, A Change Would Do You Good'.

WHOT Youngstown PD: Tom Pappas MD: Mike Thomas. Top 40 playlist including songs like 'Mark Morrison, Return Of The Mack' and 'OMC, How Bizarre'.

KHTT Tulsa VP/Prgm: Sean Phillips PD/MD: Carly Rush. Top 40 playlist including songs like 'Puff Daddy & Faith Evans Feat., I'll Be' and 'Robyn, Do You Know What It Takes'.

WINK 104 WNNK Harrisburg PD: John O'Dea MD: Scott Shaw. Top 40 playlist including songs like 'Robyn, Do You Know What It Takes' and 'Sister Hazel, All For You'.

SWEET 98 KQKQ Omaha PD: Michael Steele MD: Jimi Jarrm. Top 40 playlist including songs like 'Savage Garden, I Want You' and 'Robyn, Do You Know What It Takes'.

KRQQ Tucson PD: Tim Richards MD: Dino. Top 40 playlist including songs like 'Mark Morrison, Return Of The Mack' and 'Blackstreet, Don't Leave Me'.

Q94 WRVQ Richmond PD: Lisa McKay APD/MD: Billy Surf. Top 40 playlist including songs like 'White Town, Your Woman' and 'Mercedith Brooks, Bitch'.

WABB Mobile PD: Wayne Coy APD/MD: Darrin Stone. Top 40 playlist including songs like 'Mercedith Brooks, Bitch' and 'Third Eye Blind, Semi-Charmed Life'.

K92 WLXK Roanoke PD: Russ Brown MD: Lisa Jo Elliott. Top 40 playlist including songs like 'Blackstreet, Don't Leave Me' and 'Third Eye Blind, Semi-Charmed Life'.

POWER PLAYLISTS

For Week Ending July 20, 1997

Playlists compiled by Broadcast Data Systems' Radio Track service. Songs ranked by number of plays in monitored week. Playlists are listed in order of TSSA weekly score, beginning with the highest-scoring station. Scores are updated twice yearly following the release of the Spring and Fall Arbitron surveys. The number of stations shown each week varies depending upon space.



WNOK Columbia PD: Jonathan Rush MD: T.J. McKay. Table with 40 rows of song titles and ratings.

KC101 New Haven PD: Tony Bristol MD: Jeff McCartney. Table with 40 rows of song titles and ratings.

KKMG Colorado Springs PD: Scooter B. Stevens MD: Tim McKenna. Table with 40 rows of song titles and ratings.

HOT 94.9 Salt Lake City MD: Dr. Doug Dodd. Table with 40 rows of song titles and ratings.

STAR 93.1 Knoxville PD: Rich Bailey MD: Andi Jackson. Table with 40 rows of song titles and ratings.

THE CAT Lexington PD: Jill Meyer. Table with 40 rows of song titles and ratings.

FM97 Lancaster PD: Jordan Walsh MD: Vince D'Ambrosio. Table with 40 rows of song titles and ratings.

LOOSE 102 Baton Rouge VP/Pgm: Chuck Geiger. Table with 40 rows of song titles and ratings.

B103.9 Fort Myers PD: Chris Cue MD: Randy Sherwin. Table with 40 rows of song titles and ratings.

KKRD Wichita GM/OM/PD: Jack Oliver MD: Craig Hubbard. Table with 40 rows of song titles and ratings.

98YCR York OM: Rick McCauslin PD: Davy Crockett. Table with 40 rows of song titles and ratings.

KSMB Lafayette PD: Bobby Novosad MD: Sam Diamond. Table with 40 rows of song titles and ratings.

KRUF Shreveport PD: Gary Robinson MD: Erin Dewerff. Table with 40 rows of song titles and ratings.

KZZU Spokane PD: Ken Hopkins MD: John Conner. Table with 40 rows of song titles and ratings.

CK105 Flint PD/MD: Scott Seipel. Table with 40 rows of song titles and ratings.

SUPER 102 Charleston, WV PD/MD: Bill Shahan. Table with 40 rows of song titles and ratings.

HOT 107.9 Syracuse PD/MD: Ed LaCombe. Table with 40 rows of song titles and ratings.

HOT 97 Wilkes Barre PD: Kid Kelly APD/MD: Danny Ocean. Table with 40 rows of song titles and ratings.

AIRPOWER (Minimum 1500 detections for the first time)

★★★

NO RECORDS QUALIFIED FOR AIRPOWER THIS WEEK

AIRPOWER BOUND

SAVAGE GARDEN 1399/-21
To The Moon And Back (Columbia)
Total Stations: 78/Chart Move: 28-25
Heavy (40+ plays): 1 KSMB
Medium (20-39): 35 KKM, KKRD, KKRZ, KQKQ, KRUF, KZHT, WABB, WCIL, WDDJ, WFBC, WGTZ, WHOT, WIXX, WJBO, WKRZ, WKSZ, WLKT, WNNK, WPRO, WQSL, WQZQ, WSSX, WSTR, WSTW, WTW, WKRS, WYCR, WYHT, WWST, WXIS, WXLK, WXXL, WYCR, WYOY, WZST
Light (Under 20): 42
New Airplay This Week: 2 WKSS, WRHT

10,000 MANIACS 1375/73
More Than This (Geffen)
Total Stations: 85/Chart Move: 29-28
Heavy (40+): 2 KSMB, WKSZ
Medium (20-39): 33 KESR, KHTQ, KKRZ, KMXV, KQKQ, WAEB, WBHT, WBZZ, WDDJ, WFBC, WHTZ, WJBO, WKRO, WKRS, WKSE, WNK, WNNK, WNOK, WNTQ, WPRO, WPST, WQSL, WQZQ, WSSX, WSTW, WYSR, WXLK, WXXX, WYCR, WZNY, WZPL, WZST, WZYP
Light (Under 20): 50
New Airplay This Week: 5 KALC, WABB, WFLZ, WPXY, WZYP

MATCHBOX 20 1375/297
Push (Lava/Atlantic)
Total Stations: 82/Chart Move: 34-27
Heavy (40+): 5 WFBC, WNOK, WSSX, WYOY, WZNY
Medium (20-39): 24 KALC, KESR, KKRD, KMXV, KSMB, WABB, WBHT, WCIL, WDDJ, WIXX, WJBO, WKRO, WKRS, WNK, WNNK, WNTQ, WPRO, WPST, WQSL, WQZQ, WSSX, WSTR, WSTW, WTW, WKRS, WYCR, WYHT, WWST, WXIS, WXLK, WXXL, WYCR, WYOY, WZST
Light (Under 20): 53
New Airplay This Week: 11 KDWB, KKQ, KKM, WFLY, WHTZ, WHYI, WSNX, WVK, WWST, WXXL, WYCR

MR. PRESIDENT 1254/199
Coco Jambo (Warner Bros.)
Total Stations: 73/Chart Move: 35-29
Heavy (40+): 2 KHKS, WPRO
Medium (20-39): 29 KDWB, KESR, KHTQ, KH, KKLQ, KKM, KKRD, KRBE, KRQ, KRUF, KSMB, KZHT, WDJX, WFLY, WFLZ, WHTZ, WKSE, WKSS, WKSZ, WLKT, WNNK, WPST, WQSL, WSNX, WSR, WWHT, WXLK, WYCR, WZJM
Light (Under 20): 42
New Airplay This Week: 7 KDWB, WABB, WBLI, WDDJ, WHOT, WHYI, WVK

DJ COMPANY 1191/20
Rhythm Of Love (Crave)
Total Stations: 83/Chart Move: 31-32
Heavy (40+): 4 KZZU, WQSL, WWZZ, WXYV
Medium (20-39): 22 KBFM, KH, KIIS, KRBE, KRUF, KZHT, WBLI, WDDJ, WFLZ, WHTZ, WKSE, WNNK, WPST, WPXY, WQZQ, WTW, WYSR, WYHT, WYCR, WXLK, WXXL, WYCR
Light (Under 20): 57
New Airplay This Week: 2 WBHT, WNK

THE WALLFLOWERS 1123/172
The Difference (Interscope)
Total Stations: 70/Chart Move: 36-33
Heavy (40+): 1 WXS

Medium (20-39): 27 KESR, KHTQ, KKLQ, KQKQ, WABB, WBHT, WBZZ, WDCG, WDDJ, WIXX, WKSE, WNNK, WNOK, WNTQ, WPRO, WPST, WPXY, WQSL, WRVQ, WSSX, WSTR, WSTW, WTW, WWCK, WXLK, WZPL, WZST
Light (Under 20): 42
New Airplay This Week: 9 KBFM, KSMB, WDJX, WFBC, WHOT, WKCI, WLAN, WXXL, WZPL

JEWEL 1103/540
Foolish Games (Atlantic)
Total Stations: 65/Chart Move: Debut 34
Heavy (40+): 0
Medium (20-39): 28 KDWB, KHFI, KHOM, KJYO, KKRZ, KQKQ, KRUF, KSMB, KZZU, WBHT, WGTZ, WHOT, WHYI, WJBO, WKRO, WNK, WNTQ, WPST, WQSL, WSSX, WSTR, WTKS, WXXL, WXXX, WYOY, WZNY, WZPL, WZST
Light (Under 20): 37
New Airplay This Week: 19 KDWB, KKQ, KKM, KRQ, KZZU, WAPE, WCIL, WGTZ, WKCI, WLAN, WNNK, WNOK, WNTQ, WPRO, WPXY, WYSR, WWCK, WWST, WYCR

98 DEGREES 1028/156
Invisible Man (Motown)
Total Stations: 64/Chart Move: 39-36
Heavy (40+): 1 KZHT
Medium (20-39): 26 KBFM, KESR, KHTQ, KIIS, KQKQ, KRUF, WABB, WBLI, WDDJ, WDJX, WFLZ, WGTZ, WHTZ, WKSE, WLKT, WPRO, WQSL, WSNX, WTW, WVK, WYSR, WWZZ, WXLK, WXYV, WYCR, WZJM
Light (Under 20): 37
New Airplay This Week: 5 KKRZ, WKSS, WXXL, WXXX, WZST

TONIC 1024/239
If You Could Only See (Polydor/A&M)
Total Stations: 83/Chart Move: Debut 37
Heavy (40+): 6 WABB, WBHT, WDCG, WFBC, WKRO, WKRS
Medium (20-39): 13 KALC, KESR, KKRD, WGTZ, WNNK, WQSL, WSSX, WSTR, WWHT, WXS, WZNY, WZPL, WZST
Light (Under 20): 64
New Airplay This Week: 5 KHOM, KKLQ, WDDJ, WKSE, WPST

NO MERCY 823/91
When I Die (Arista)
Total Stations: 89/Chart Move: Debut 40
Heavy (40+): 4 KBFM, KHOM, WHYI, WTW
Medium (20-39): 10 KHTO, KRUF, WFLY, WLKT, WNNK, WPRO, WQSL, WXS, WXLK, WZJM
Light (Under 20): 55
New Airplay This Week: 3 KHKS, KRQ, WXXX

CHART BOUND

AEROSMITH 664/-6
Hole In My Soul (Columbia)
Total Stations: 40
Heavy (40+): 0
Medium (20-39): 15 KESR, KHTQ, KRUF, WABB, WAEB, WBHT, WBLI, WDDJ, WQSL, WSTW, WTW, WWCK, WXS, WYCR
Light (Under 20): 25

LEANN RIMES 650/100
How Do I Live (Curb)
Total Stations: 45
Heavy (40+): 2 KHOM, WXXX
Medium (20-39): 9 KESR, KHTQ, KRBE, KRUF, KSMB, WAPE, WFLY, WIXX, WLS
Light (Under 20): 34
New Airplay This Week: 7 KSMB, WAEB, WFBC, WGTZ, WSTR, WXXL, WYOY

MOST NEW AIRPLAY THIS WEEK

	No. Of Stations
JEWEL <i>Foolish Games (Atlantic)</i>	19
PAULA COLE <i>I Don't Want To Wait (Imago/Warner Bros.)</i>	13
WILD ORCHID <i>Supernatural (RCA)</i>	13
MATCHBOX 20 <i>Push (Lava/Atlantic)</i>	11
THE WALLFLOWERS <i>The Difference (Interscope)</i>	9

THE MIGHTY MIGHTY BOSSTONES 621/122
The Impression That I Get (Big Rig/Mercury)
Total Stations: 54
Heavy (40+): 2 KALC, WKRO
Medium (20-39): 13 KESR, KKLQ, WDCG, WDDJ, WIXX, WJBO, WNK, WPRO, WQSL, WSSX, WTW, WWCK, WYCR
Light (Under 20): 39
New Airplay This Week: 3 KDWB, WPST, WWST

JOCELYN ENRIQUEZ 609/16
Do You Miss Me (Classified/Timber!/Tommy Boy)
Total Stations: 41
Heavy (40+): 5 KRBE, KSMB, WBLI, WKSZ, WXYV
Medium (20-39): 5 KDWB, KH, KIIS, WFLY, WXXL
Light (Under 20): 31

PAULA COLE 594/196
I Don't Want To Wait (Imago/Warner Bros.)
Total Stations: 48
Heavy (40+): 1 WKSZ
Medium (20-39): 8 KQKQ, KSMB, WKRO, WNOK, WSTR, WXS, WXLK, WZST
Light (Under 20): 39
New Airplay This Week: 13 KHTO, KMXV, WBZZ, WHOT, WJBO, WNTQ, WPRO, WQSL, WQZQ, WSTW, WWCK, WYOY, WZNY

VARIOUS ARTISTS 538/-12
ESPN Presents The Jock Jam (Tommy Boy)
Total Stations: 39
Heavy (40+): 4 KHKS, WGTZ, WHYI, WKSE
Medium (20-39): 5 KDWB, KH, KIIS, WRVQ, WXYV
Light (Under 20): 30

LE CLICK 459/50
Call Me (Logic/RCA)
Total Stations: 50
Heavy (40+): 3 WBLI, WHYI, WWZZ
Medium (20-39): 7 KBFM, KRBE, WHTZ, WKSE, WQZQ, WRVQ, WXXL
Light (Under 20): 40

TRIO 458/53
Da, Da, Da... (Mercury)
Total Stations: 46
Heavy (40+): 1 WPST
Medium (20-39): 11 KKM, KSMB, WABB, WDJX, WGTZ, WLKT, WPRO, WRHT, WSNX, WXXL, WZPL
Light (Under 20): 34
New Airplay This Week: 5 KJYO, KSMB, WKSS, WVK, WYSR

NU FLAVOR FEAT. ROGER 434/20
Sweet Sexy Thing (Reprise)
Total Stations: 22
Heavy (40+): 2 KHFI, KZZU
Medium (20-39): 9 KHKS, KRQ, KZHT, WDJX, WFLZ, WLKT, WSNX, WXLK, WZJM
Light (Under 20): 11
New Airplay This Week: 2 WDJX, WLKT

GOD'S PROPERTY 433/71
Stomp (B-Rite/Interscope)
Total Stations: 32
Heavy (40+): 1 WQZQ
Medium (20-39): 5 KZZU, WDJX, WGTZ, WQSL, WXS
Light (Under 20): 26
New Airplay This Week: 3 KBFM, WYSR, WXYV

ABRA MOORE 378/56
Four Leaf Clover (Arista Austin/Arista)
Total Stations: 44
Heavy (40+): 0
Medium (20-39): 5 KALC, KKLQ, WABB, WKRO, WXLK
Light (Under 20): 39
New Airplay This Week: 6 KJYO, KMXV, WDJX, WKRS, WNTQ, WXLK

DIANA KING 275/83
I Say A Little Prayer (Work)
Total Stations: 28
Heavy (40+): 0
Medium (20-39): 5 WBLI, WFLY, WKSE, WPRO, WZJM
Light (Under 20): 23
New Airplay This Week: 4 WFLY, WNNK, WPRO, WWZZ

★ WILD ORCHID 256/203
Supernatural (RCA)
Total Stations: 32
Heavy (40+): 0
Medium (20-39): 2 KESR, WKSZ
Light (Under 20): 30
New Airplay This Week: 13 KHTO, KIIS, KJYO, KKRD, WABB, WCIL, WFLY, WKSZ, WQSL, WTW, WWCK, WYCR, WZST

CRUSH 233/23
Jellyhead (Robbins)
Total Stations: 46
Heavy (40+): 0
Medium (20-39): 0
Light (Under 20): 46
New Airplay This Week: 1 WBLI

LIVE 230/110
Turn My Head (Radioactive/MCA)
Total Stations: 29
Heavy (40+): 0
Medium (20-39): 2 WDCG, WYCR
Light (Under 20): 27
New Airplay This Week: 8 KKRD, KSMB, WDDJ, WSTW, WTW, WXS, WYOY, WZNY

NIGHT RANGER 220/12
Forever All Over Again (Legacy/Columbia)
Total Stations: 20
Heavy (40+): 0
Medium (20-39): 5 WDDJ, WHYI, WJBO, WSTW, WWCK
Light (Under 20): 15
New Airplay This Week: 2 WBHT, WTW

MONACO 197/78
What Do You Want From Me? (Polydor/A&M)
Total Stations: 17
Heavy (40+): 1 KKLQ
Medium (20-39): 4 KALC, WFLZ, WKRO, WPRO
Light (Under 20): 12
New Airplay This Week: 6 KRUF, WDJX, WKRO, WXXB, WYCR, WZST

COOLIO FEAT. 40 THEVZ 166/52
C U When U Get There (Tommy Boy)
Total Stations: 17
Heavy (40+): 0
Medium (20-39): 2 WRVQ, WXS
Light (Under 20): 15
New Airplay This Week: 5 KKRZ, KZHT, WDJX, WFLY, WQZQ

SARAH MCLACHLAN 166/71
Building A Mystery (Arista)
Total Stations: 24
Heavy (40+): 0
Medium (20-39): 2 KALC, WDCG
Light (Under 20): 22
New Airplay This Week: 3 WJBO, WSTR, WZST

SQUIRREL NUT ZIPPERS 156/29
Hell (Mammoth)
Total Stations: 23
Heavy (40+): 0
Medium (20-39): 1 WJBO
Light (Under 20): 22
New Airplay This Week: 1 WNNK

★ AQUA 151/55
Barbie Girl (MCA)
Total Stations: 12
Heavy (40+): 1 KHOM
Medium (20-39): 1 WWZZ
Light (Under 20): 10
New Airplay This Week: 2 WPXY, WWZZ

DUNCAN SHEIK 141/36
She Runs Away (Atlantic)
Total Stations: 16
Heavy (40+): 0
Medium (20-39): 1 WSTW
Light (Under 20): 15

BEENIE MAN FEAT. CHEVELLE FRANKLYN 126/26
Dancehall Queen (Island Jamaica/Island)
Total Stations: 18
Heavy (40+): 0
Medium (20-39): 0
Light (Under 20): 18
New Airplay This Week: 3 WFLY, WHOT, WXLK

CHRIS WAYNE 124/-5
Land Down Under (Critique)
Total Stations: 28
Heavy (40+): 1 WJBO
Medium (20-39): 0
Light (Under 20): 25
New Airplay This Week: 1 WYSR

★ LISA STANSFIELD 112/60
Never, Never Gonna Give You Up (Arista)
Total Stations: 18
Heavy (40+): 0
Medium (20-39): 0
Light (Under 20): 18
New Airplay This Week: 4 WJBO, WNTQ, WRHT, WZJM

★ CRAVIN' MELON 106/20
Sweet Tea (Mercury)
Total Stations: 7
Heavy (40+): 0
Medium (20-39): 2 WFBC, WSSX
Light (Under 20): 5
New Airplay This Week: 1 WNOK

★ THE NOTORIOUS B.I.G. 104/16
Hypnotize (Bad Boy/Arista)
Total Stations: 9
Heavy (40+): 0
Medium (20-39): 1 KZZU
Light (Under 20): 8
New Airplay This Week: 1 KDWB

★ KIM RICHEY 103/6
I Know (Mercury)
Total Stations: 10
Heavy (40+): 0
Medium (20-39): 2 KALC, WJBO
Light (Under 20): 8
New Airplay This Week: 1 KSMB

★ BARENAKED LADIES 101/35
Brian Wilson (Reprise)
Total Stations: 2
Heavy (40+): 2 WDCG, WKSE
Medium (20-39): 0
Light (Under 20): 0

Airpower awarded to those records which attain 1500 detections for the first time. New airplay lists those stations registering six or more detections per week on a record for the first time. ★ Initial impact: records appearing on this page for the first time.

AIRPLAY **Monitor**

SONG ACTIVITY REPORTS



For Week Ending July 20, 1997

10,000 MANIACS 1375/73 **98 DEGREES 1028/156** **BACKSTREET BOYS 3375/209** **MEREDITH BROOKS 4039/79** **PAULA COLE 594/196**

More Than This (Geffen) **Invisible Man (Motown)** **Quit Playing Games (With My Heart) (Jive)** **Bitch (Capitol)** **I Don't Want To Wait (Imago/Warner Bros.)**

Total Stations: 85 Chart Move: 29-26 Total Stations: 64 Chart Move: 39-36 Total Stations: 88 Chart Move: 9-5 Total Stations: 88 Chart Move: 1-1 Total Stations: 48

10,000 MANIACS					98 DEGREES					BACKSTREET BOYS					MEREDITH BROOKS					PAULA COLE				
MTV	WHL	WHTZ	KHKS	KHKS																				
MTV	WHL	WHTZ	KHKS	KHKS	MTV	WHL	WHTZ	KHKS	KHKS	MTV	WHL	WHTZ	KHKS	KHKS	MTV	WHL	WHTZ	KHKS	KHKS					
WHTZ	WHL	WHTZ	KHKS	KHKS	WHTZ	WHL	WHTZ	KHKS	KHKS	WHTZ	WHL	WHTZ	KHKS	KHKS	WHTZ	WHL	WHTZ	KHKS	KHKS					
KBWB	KBWB	KBWB	KBWB	KBWB	KBWB	KBWB	KBWB	KBWB	KBWB	KBWB	KBWB	KBWB	KBWB	KBWB	KBWB	KBWB	KBWB	KBWB	KBWB	KBWB				
KBWB	KBWB	KBWB	KBWB	KBWB	KBWB	KBWB	KBWB	KBWB	KBWB	KBWB	KBWB	KBWB	KBWB	KBWB	KBWB	KBWB	KBWB	KBWB	KBWB	KBWB				
KBWB	KBWB	KBWB	KBWB	KBWB	KBWB	KBWB	KBWB	KBWB	KBWB	KBWB	KBWB	KBWB	KBWB	KBWB	KBWB	KBWB	KBWB	KBWB	KBWB	KBWB				
KBWB	KBWB	KBWB	KBWB	KBWB	KBWB	KBWB	KBWB	KBWB	KBWB	KBWB	KBWB	KBWB	KBWB	KBWB	KBWB	KBWB	KBWB	KBWB	KBWB	KBWB				
KBWB	KBWB	KBWB	KBWB	KBWB	KBWB	KBWB	KBWB	KBWB	KBWB	KBWB	KBWB	KBWB	KBWB	KBWB	KBWB	KBWB	KBWB	KBWB	KBWB	KBWB				
KBWB	KBWB	KBWB	KBWB	KBWB	KBWB	KBWB	KBWB	KBWB	KBWB	KBWB	KBWB	KBWB	KBWB	KBWB	KBWB	KBWB	KBWB	KBWB	KBWB	KBWB				
KBWB	KBWB	KBWB	KBWB	KBWB	KBWB	KBWB	KBWB	KBWB	KBWB	KBWB	KBWB	KBWB	KBWB	KBWB	KBWB	KBWB	KBWB	KBWB	KBWB	KBWB				
KBWB	KBWB	KBWB	KBWB	KBWB	KBWB	KBWB	KBWB	KBWB	KBWB	KBWB	KBWB	KBWB	KBWB	KBWB	KBWB	KBWB	KBWB	KBWB	KBWB	KBWB				
KBWB	KBWB	KBWB	KBWB	KBWB	KBWB	KBWB	KBWB	KBWB	KBWB	KBWB	KBWB	KBWB	KBWB	KBWB	KBWB	KBWB	KBWB	KBWB	KBWB	KBWB				

DJ COMPANY 1191/20 **JOCELYN ENRIQUEZ 609/16** **GOD'S PROPERTY 433/71** **HANSON 2271/682** **JEWEL 1103/540**

Rhythm Of Love (Crave) **Do You Miss Me (Classified/Timber/Tommy Boy)** **Stomp (B-Rite/Interscope)** **Where's The Love (Mercury)** **Foolish Games (Atlantic)**

Total Stations: 83 Chart Move: 31-32 Total Stations: 41 Total Stations: 32 Total Stations: 85 Chart Move: 24-16 Total Stations: 65 Chart Move: Debut 34

DJ COMPANY					JOCELYN ENRIQUEZ					GOD'S PROPERTY					HANSON					JEWEL				
MTV	WHL	WHTZ	KHKS	KHKS																				
MTV	WHL	WHTZ	KHKS	KHKS	MTV	WHL	WHTZ	KHKS	KHKS	MTV	WHL	WHTZ	KHKS	KHKS	MTV	WHL	WHTZ	KHKS	KHKS					
WHTZ	WHL	WHTZ	KHKS	KHKS	WHTZ	WHL	WHTZ	KHKS	KHKS	WHTZ	WHL	WHTZ	KHKS	KHKS	WHTZ	WHL	WHTZ	KHKS	KHKS					
KBWB	KBWB	KBWB	KBWB	KBWB	KBWB	KBWB	KBWB	KBWB	KBWB	KBWB	KBWB	KBWB	KBWB	KBWB	KBWB	KBWB	KBWB	KBWB	KBWB	KBWB				
KBWB	KBWB	KBWB	KBWB	KBWB	KBWB	KBWB	KBWB	KBWB	KBWB	KBWB	KBWB	KBWB	KBWB	KBWB	KBWB	KBWB	KBWB	KBWB	KBWB	KBWB				
KBWB	KBWB	KBWB	KBWB	KBWB	KBWB	KBWB	KBWB	KBWB	KBWB	KBWB	KBWB	KBWB	KBWB	KBWB	KBWB	KBWB	KBWB	KBWB	KBWB	KBWB				
KBWB	KBWB	KBWB	KBWB	KBWB	KBWB	KBWB	KBWB	KBWB	KBWB	KBWB	KBWB	KBWB	KBWB	KBWB	KBWB	KBWB	KBWB	KBWB	KBWB	KBWB				
KBWB	KBWB	KBWB	KBWB	KBWB	KBWB	KBWB	KBWB	KBWB	KBWB	KBWB	KBWB	KBWB	KBWB	KBWB	KBWB	KBWB	KBWB	KBWB	KBWB	KBWB				
KBWB	KBWB	KBWB	KBWB	KBWB	KBWB	KBWB	KBWB	KBWB	KBWB	KBWB	KBWB	KBWB	KBWB	KBWB	KBWB	KBWB	KBWB	KBWB	KBWB	KBWB				
KBWB	KBWB	KBWB	KBWB	KBWB	KBWB	KBWB	KBWB	KBWB	KBWB	KBWB	KBWB	KBWB	KBWB	KBWB	KBWB	KBWB	KBWB	KBWB	KBWB	KBWB				
KBWB	KBWB	KBWB	KBWB	KBWB	KBWB	KBWB	KBWB	KBWB	KBWB	KBWB	KBWB	KBWB	KBWB	KBWB	KBWB	KBWB	KBWB	KBWB	KBWB	KBWB				
KBWB	KBWB	KBWB	KBWB	KBWB	KBWB	KBWB	KBWB	KBWB	KBWB	KBWB	KBWB	KBWB	KBWB	KBWB	KBWB	KBWB	KBWB	KBWB	KBWB	KBWB				
KBWB	KBWB	KBWB	KBWB	KBWB	KBWB	KBWB	KBWB	KBWB	KBWB	KBWB	KBWB	KBWB	KBWB	KBWB	KBWB	KBWB	KBWB	KBWB	KBWB	KBWB				

DIANA KING 275/83 **LE CLICK 459/50** **MATCHBOX 20 1375/297** **DAVE MATTHEWS BAND 1552/19** **THE MIGHTY MIGHTY BOSSTONES 621/122**

I Say A Little Prayer (Work) **Call Me (Logic/RCA)** **Push (Lava/Atlantic)** **Crash Into Me (RCA)** **The Impression That I Get (Big Rig/Mercury)**

Total Stations: 28 Total Stations: 50 Total Stations: 82 Chart Move: 34-27 Total Stations: 74 Chart Move: 26-23 Total Stations: 54

DIANA KING					LE CLICK					MATCHBOX 20					DAVE MATTHEWS BAND					THE MIGHTY MIGHTY BOSSTONES				
MTV	WHL	WHTZ	KHKS	KHKS																				
MTV	WHL	WHTZ	KHKS	KHKS	MTV	WHL	WHTZ	KHKS	KHKS	MTV	WHL	WHTZ	KHKS	KHKS	MTV	WHL	WHTZ	KHKS	KHKS					
WHTZ	WHL	WHTZ	KHKS	KHKS	WHTZ	WHL	WHTZ	KHKS	KHKS	WHTZ	WHL	WHTZ	KHKS	KHKS	WHTZ	WHL	WHTZ	KHKS	KHKS					
KBWB	KBWB	KBWB	KBWB	KBWB	KBWB	KBWB	KBWB	KBWB	KBWB	KBWB	KBWB	KBWB	KBWB	KBWB	KBWB	KBWB	KBWB	KBWB	KBWB	KBWB				
KBWB	KBWB	KBWB	KBWB	KBWB	KBWB	KBWB	KBWB	KBWB	KBWB	KBWB	KBWB	KBWB	KBWB	KBWB	KBWB	KBWB	KBWB	KBWB	KBWB	KBWB				
KBWB	KBWB	KBWB	KBWB	KBWB	KBWB	KBWB	KBWB	KBWB	KBWB	KBWB	KBWB	KBWB	KBWB	KBWB	KBWB	KBWB	KBWB	KBWB	KBWB	KBWB				
KBWB	KBWB	KBWB	KBWB	KBWB	KBWB	KBWB	KBWB	KBWB	KBWB	KBWB	KBWB	KBWB	KBWB	KBWB	KBWB	KBWB	KBWB	KBWB	KBWB	KBWB				
KBWB	KBWB	KBWB	KBWB	KBWB	KBWB	KBWB	KBWB	KBWB	KBWB	KBWB	KBWB	KBWB	KBWB	KBWB	KBWB	KBWB	KBWB	KBWB	KBWB	KBWB				
KBWB	KBWB	KBWB	KBWB	KBWB	KBWB	KBWB	KBWB	KBWB	KBWB	KBWB	KBWB	KBWB	KBWB	KBWB	KBWB	KBWB	KBWB	KBWB	KBWB	KBWB				
KBWB	KBWB	KBWB	KBWB	KBWB	KBWB	KBWB	KBWB	KBWB	KBWB	KBWB	KBWB	KBWB	KBWB	KBWB	KBWB	KBWB	KBWB	KBWB	KBWB	KBWB				
KBWB	KBWB	KBWB	KBWB	KBWB	KBWB	KBWB	KBWB	KBWB	KBWB	KBWB	KBWB	KBWB	KBWB	KBWB	KBWB	KBWB	KBWB	KBWB	KBWB	KBWB				
KBWB	KBWB	KBWB	KBWB	KBWB	KBWB	KBWB	KBWB	KBWB	KBWB	KBWB	KBWB	KBWB	KBWB	KBWB	KBWB	KBWB	KBWB	KBWB	KBWB	KBWB				
KBWB	KBWB	KBWB	KBWB	KBWB	KBWB	KBWB	KBWB	KBWB	KBWB	KBWB	KBWB	KBWB	KBWB	KBWB	KBWB	KBWB	KBWB	KBWB	KBWB	KBWB				
KBWB	KBWB	KBWB	KBWB	KBWB	KBWB	KBWB	KBWB	KBWB	KBWB	KBWB	KBWB	KBWB	KBWB	KBWB	KBWB	KBWB	KBWB	KBWB	KBWB	KBWB				
KBWB	KBWB	KBWB	KBWB	KBWB	KBWB	KBWB	KBWB	KBWB	KBWB	KBWB	KBWB	KBWB	KBWB	KBWB	KBWB	KBWB	KBWB	KBWB	KBWB	KBWB				
KBWB	KBWB	KBWB	KBWB	KBWB	KBWB	KBWB	KBWB	KBWB	KBWB	KBWB	KBWB	KBWB	KBWB	KBWB	KBWB	KBWB	KBWB	KBWB	KBWB	KBWB				
KBWB	KBWB	KBWB	KBWB	KBWB	KBWB	KBWB	KBWB	KBWB	KBWB	KBWB	KBWB	KBWB	KBWB	KBWB	KBWB	KBWB	KBWB	KBWB	KBWB	KBWB				
KBWB	KBWB	KBWB	KBWB	KBWB	KBWB	KBWB	KBWB	KBWB	KBWB	KBWB	KBWB	KBWB	KBWB	KBWB	KBWB	KBWB	KBWB	KBWB	KBWB	KBWB				

SONG ACTIVITY REPORTS

For Week Ending July 20, 1997

ABRA MOORE 378/56

Four Leaf Clover (Arista/Arista)

Table with columns: Station, Airplay, and Gain for ABRA MOORE's 'Four Leaf Clover'.

MR. PRESIDENT 1254/199

Coco Jambo (Warner Bros.)

Table with columns: Station, Airplay, and Gain for MR. PRESIDENT's 'Coco Jambo'.

NO MERCY 823/91

When I Die (Arista)

Table with columns: Station, Airplay, and Gain for NO MERCY's 'When I Die'.

NU FLAVOR FEAT. ROGER 434/20

Sweet Sexy Thing (Reprise)

Table with columns: Station, Airplay, and Gain for NU FLAVOR FEAT. ROGER's 'Sweet Sexy Thing'.

OMC 3711/144

How Bizarre (Huh!/Mercury)

Table with columns: Station, Airplay, and Gain for OMC's 'How Bizarre'.

PUFF DADDY & FAITH EVANS (FEAT. 112) 2107/295

I'll Be Missing You (Bad Boy/Arista)

Table with columns: Station, Airplay, and Gain for PUFF DADDY & FAITH EVANS's 'I'll Be Missing You'.

LEANN RIMES 650/100

How Do I Live (Curb)

Table with columns: Station, Airplay, and Gain for LEANN RIMES's 'How Do I Live'.

ROBYN 3610/109

Do You Know (What It Takes) (RCA)

Table with columns: Station, Airplay, and Gain for ROBYN's 'Do You Know'.

SISTER SLIM 2884/55

All For You (Universal)

Table with columns: Station, Airplay, and Gain for SISTER SLIM's 'All For You'.

WILL SMITH 2794/484

Men In Black (Columbia)

Table with columns: Station, Airplay, and Gain for WILL SMITH's 'Men In Black'.

SPICE GIRLS 2694/538

2 Become 1 (Virgin)

Table with columns: Station, Airplay, and Gain for SPICE GIRLS's '2 Become 1'.

THIRD EYE BLIND 3425/226

Semi-Charmed Life (Elektra/EEG)

Table with columns: Station, Airplay, and Gain for THIRD EYE BLIND's 'Semi-Charmed Life'.

TONIC 1024/239

If You Could Only See (Polydor/A&M)

Table with columns: Station, Airplay, and Gain for TONIC's 'If You Could Only See'.

TRIO 453/53

Da, Da, Da... (Mercury)

Table with columns: Station, Airplay, and Gain for TRIO's 'Da, Da, Da...'.

THE WALLFLOWERS 1123/172

The Difference (Interscope)

Table with columns: Station, Airplay, and Gain for THE WALLFLOWERS's 'The Difference'.

POWER PLAYLISTS

For Week Ending July 20, 1997

Radio Data Systems logo and text: Playlist supplied by Broadcast Data Systems' Radio Track service. Songs ranked by number of plays in monitored week.

WKTU New York PD: Frankie Blue MD: Andy Shane. Playlist with columns for rank, song title, and TW/LW ratio.

B96 Chicago PD: Todd Cavanah MD: Erik Bradley. Playlist with columns for rank, song title, and TW/LW ratio.

Q102 Philadelphia PD: Glenn Kalina MD: Jay Towers. Playlist with columns for rank, song title, and TW/LW ratio.

JAM'N 94.5 Boston PD: Cadillac Jack APD/MD: Cat Collins. Playlist with columns for rank, song title, and TW/LW ratio.

WILD 94.9 San Francisco PD: Michael Martin MD: "Jazzy" Jim Archer. Playlist with columns for rank, song title, and TW/LW ratio.

POWER 96 Miami PD: Kid Curry MD: Phil Jones. Playlist with columns for rank, song title, and TW/LW ratio.

B100 Los Angeles PD: Tony Coles MC: Leigh Ann Adam. Playlist with columns for rank, song title, and TW/LW ratio.

KUBE Seattle PD: Mike Tierney MD: Bobby O. Playlist with columns for rank, song title, and TW/LW ratio.

WDRQ Detroit PD: Lisa Rodman. Playlist with columns for rank, song title, and TW/LW ratio.

FM102 Sacramento PD: Bob West APD/MD: Trejo. Playlist with columns for rank, song title, and TW/LW ratio.

POWER 92 Phoenix PD: Don Parker APD: Brian Douglas MD: Mikey Freeman. Playlist with columns for rank, song title, and TW/LW ratio.

KGGI Riverside PD: Diana Laird APD: Jesse Duran MC: Ricky Fuentes. Playlist with columns for rank, song title, and TW/LW ratio.

BZ90 San Diego OM/MD: Lisa Vazquez MD: Dale Soliven. Playlist with columns for rank, song title, and TW/LW ratio.

KTFM San Antonio PD: Cliff Tredway MD: Steve Chavez. Playlist with columns for rank, song title, and TW/LW ratio.

B95 Fresno PD: Mark Adams MD: Marcus D. Playlist with columns for rank, song title, and TW/LW ratio.

Z104 Norfolk PD: Don London MD: Jay West. Playlist with columns for rank, song title, and TW/LW ratio.

KS107.5 Denver PD: Mark Feather MD: Lee Cagle. Playlist with columns for rank, song title, and TW/LW ratio.

POWER 102 El Paso PD: John Candelaria. Playlist with columns for rank, song title, and TW/LW ratio.

POWER PLAYLISTS



For Week Ending July 20, 1997



Playlists supplied by Broadcast Data Systems' Radio Track service. Songs ranked by number of plays in monitored week. Playlists are listed in order of...

KLUC Las Vegas PD: Cat Thomas MD: Melissa Stefan. Top 40 list including Will Smith, Men In Black, Puff Daddy & Faith Evans, etc.

I94 Honolulu PD: Alan Oda MD: Richie Aqoi. Top 40 list including Shades, Serenade, Angelina, The Tide Is High, etc.

KQMQ Honolulu PD/MD: Jamie Hyatt MC: Eric "Kool E." Bunda. Top 40 list including 98 Degrees, Invisible Man, Puff Daddy & Faith Evans, etc.

KIX 106 Providence PD: Joe Dawson MD: Becky Iannone. Top 40 list including Will Smith, Men In Black, Puff Daddy & Faith Evans, etc.

HOOSIER 96.3 Indianapolis PD: Scott Wheeler MD: Carl Frye. Top 40 list including Will Smith, Men In Black, Puff Daddy & Faith Evans, etc.

KKSS Albuquerque PD: Randy Savage APD: Mikey Fuentes MD: Jackie James. Top 40 list including Puff Daddy & Faith Evans, Romeo, I Belong To You, etc.

KKXX Bakersfield PD: Chris Squires MD: Tony Manes. Top 40 list including Mark Morrison, Return Of The Mack, Spice Girls, Say You'll Be There, etc.

Z95 Corpus Christi PD: Ed Ocanas MD: Tony Manero. Top 40 list including Hanson, Mmmbop, Mark Morrison, Return Of The Mack, etc.

KDON Monterey PD: Jennifer Wilde MD: Marcus D. Top 40 list including Backstreet Boys, Quit Playing Games, En Vogue, Whataveer, etc.

MONITOR TOP 40 PANELS

TOP 40/MAINSTREAM (89)

Mainstream Top 40 panel listing stations and their top 40 lists. Includes Albany, NY; Allentown, PA; Atlanta, GA; Augusta, GA; Austin, TX; Baltimore, MD; Baton Rouge, LA; Boston, MA; Buffalo, NY; Burlington, VT; Carbondale, IL; Charleston, SC; Charleston, WV; Charlotte, NC; Chattanooga, TN; Cincinnati, OH; Cleveland, OH; Colorado Springs, CO; Columbia, SC; Columbus, OH; Dallas, TX; Dayton, OH; Denver, CO; Flint, MI; Ft. Myers, FL; Grand Rapids, MI; Greenville, SC; Harrisburg, PA; Hartford, CT; Houston, TX; Huntsville, AL; Indianapolis, IN; Jackson, MS; Jacksonville, FL; Johnson City, TN; Kansas City, MO; Knoxville, TN; Lafayette, LA; Lancaster, PA; Lexington, KY; Little Rock, AR; Long Island, NY; Los Angeles, CA; Louisville, KY; McAllen/Brownsville, TX; Miami, FL; Minneapolis, MN; Mobile, AL; Nashville, TN; New Bern, NC; New Haven, CT; New Orleans, LA; New York, NY; Oklahoma City, OK; Omaha, NE; Orlando, FL; Paducah, KY; Pittsburgh, PA; Portland, ME; Portland, OR; Providence, RI; Raleigh, NC; Richmond, VA; Roanoke, VA; Rochester, NY; Salt Lake City, UT; San Diego, CA; Shreveport, LA; Spokane, WA; Springfield, MO; Syracuse, NY; Tampa, FL; Toledo, OH; Trenton, NJ; Tucson, AZ; Tulsa, OK; Washington, DC; Wichita, KS; Wilkes-Barre, PA; Wilmington, DE; York, PA; Youngstown, OH.

MODERN ADULT (36)

Modern Adult panel listing stations and their top 36 lists. Includes Albuquerque, NM; Boston, MA; Charlotte, N.C.; Chicago, IL; Columbus, OH; Dallas, TX; Denver, CO; Detroit, MI; Ft. Myers, FL; Fresno, CA; Greensboro, NC; Hartford, CT; Las Vegas, NV; Long Island, NY; Los Angeles, CA; Miami, FL; Montgomery, AL; New York, NY; Norfolk, VA; Omaha, NE; Orlando, FL; Phoenix, AZ; Portland, OR; Raleigh, NC; Richmond, VA; Sacramento, CA; Salt Lake City, UT; San Diego, CA; San Francisco, CA; Spokane, WA; St. Louis, MO; Tampa, FL.

ADULT TOP 40 (66)

Adult Top 40 panel listing stations and their top 66 lists. Includes Akron, OH; Albuquerque, NM; Baltimore, MD; Boston, MA; Charleston, WV; Charlotte, NC; Chicago, IL; Cleveland, OH; Colorado Springs, CO; Dallas, TX; Dayton, OH; Des Moines, IA; Detroit, MI; El Paso, TX; Fresno, CA; Green Bay, WI; Greensboro, NC; Hartford, CT; Honolulu, HI; Houston, TX; Indianapolis, IN; Jackson, MS; Las Vegas, NV; Lexington, KY; Los Angeles, CA; Memphis, TN; Miami, FL; Milwaukee, WI; Minneapolis, MN; Montgomery, AL; Nashville, TN; New Orleans, LA; New York, NY; Norfolk, VA; Omaha, NE; Orlando, FL; Philadelphia, PA; Phoenix, AZ; Pittsburgh, PA; Portland, OR; Providence, RI; Raleigh, NC; Richmond, VA; St. Louis, MO; Sacramento, CA; Soginaw, MI; Salt Lake City, UT; San Antonio, TX; San Diego, CA; San Francisco, CA; Savannah, GA; Seattle, WA; Tampa, FL; Washington, DC.

ADULT CONTEMPORARY (55)

Adult Contemporary panel listing stations and their top 55 lists. Includes Albany, NY; Albuquerque, NM; Allentown, PA; Allentown, PA; Augusta, GA; Baltimore, MD; Buffalo, NY; Burlington, VT; Chattanooga, TN; Chicago, IL; Cincinnati, OH; Cleveland, OH; Columbia, SC; Columbus, GA; Dallas, TX; Denver, CO; Des Moines, IA; Fresno, CA; Ft. Myers, FL; Grand Rapids, MI; Greensboro, NC; Greenville, SC; Harrisburg, PA; Hartford, CT; Huntsville, AL; Johnson City, TN; Kansas City, MO; Lafayette, LA; Las Vegas, NV; Little Rock, AR; Long Island, NY; Los Angeles, CA; Miami, FL; Minneapolis, MN; Nashville, TN; New Orleans, LA; New York, NY; Philadelphia, PA; Phoenix, AZ; Pittsburgh, PA; Portland, OR; Roanoke, VA; Sacramento, CA; Salt Lake City, UT; San Antonio, TX; San Diego, CA; San Francisco, CA; Savannah, GA; Seattle, WA; Tampa, FL; Washington, DC.

*New to panel.

AIRPLAY Monitor

BDS IMPACT

DETECTIONS



★ ★ ★ AIRPOWER ★ ★ ★
(Minimum 600 detections for the first time)

Total Plays/Gain	Total Plays/Gain
SPICE GIRLS 717/212 <i>2 Become 1 (Virgin)</i> Total Stations: 27/Chart Move: 24-12 Heavy (40+ plays): 6 KIKI, KQMQ, KTFM, WIOQ, WNVZ, WWKX Medium (20-39): 13 KBOS, KGGI, KIOX, KPRR, KUBE, KYLZ, KZFM, WBBM, WFHN, WHHH, WJJS, WJMN, WKTU Light (Under 20): 8 New Airplay This Week: 4 KDON, KUBE, WDRQ, WKTU	98 DEGREES 637/50 <i>Invisible Man (Motown)</i> Total Stations: 25/Chart Move: 18-13 Heavy (40+): 3 KIKI, KQKS, KQMQ Medium (20-39): 13 KDGS, KDON, KGGI, KIBB, KLUC, KYLZ, KZFM, WFHN, WHHH, WJMN, WKQJ, WNVZ, WWKX Light (Under 20): 9 New Airplay This Week: 2 KKSS, XHTZ

AIRPOWER BOUND

Total Plays/Gain

LAURNEA 525/-20
Can't Let Go (Yab Yum/Epic)
Total Stations: 25/Chart Move: 19-19
Heavy (40+ plays): 3 KDON, KLUC, KSFM
Medium (20-39): 7 KDGS, KUBE, KZFM, WFHN, WHHH, WJJS, WJMN
Light (Under 20): 15
New Airplay This Week: 1 WNVZ

GINUWINE 522/136
When Doves Cry (550 Music)
Total Stations: 27/Chart Move: 28-20
Heavy (40+): 3 KDON, KIKI, KUBE
Medium (20-39): 10 KKFR, KLUC, KQMQ, KSFM, KTFM, KYLZ, WFHN, WJJS, WWKX, XHTZ
Light (Under 20): 14
New Airplay This Week: 2 KKSS, WFHN

INOJ 506/197
Love You Down (So So Def/Columbia)
Total Stations: 23/Chart Move: 39-21
Heavy (40+): 3 KIKI, KYLD, WPOW
Medium (20-39): 9 KKFR, KPRR, KQKS, KQMQ, KSFM, KTFM, WJJS, WWKX, XHTZ
Light (Under 20): 11
New Airplay This Week: 6 KBOS, KIKI, KLUC, KQKS, KQMQ, KYLZ

MISSY "MISDEMEANOR" ELLIOTT 430/9
The Rain (Supa Dupa Fly) (EastWest/EEG)
Total Stations: 21/Chart Move: 22-23
Heavy (40+): 2 KYLZ, WHHH
Medium (20-39): 8 KDGS, KDON, KKFR, KQKS, KUBE, WJJS, WPOW, XHTZ
Light (Under 20): 11
New Airplay This Week: 1 WKXJ

CORINA 428/16
Summertime Summertime (So So Def/Columbia)
Total Stations: 21/Chart Move: 27-24
Heavy (40+): 3 KDON, KPRR, KYLD
Medium (20-39): 5 KGGI, KTFM, KZFM, WFHN, XHTZ
Light (Under 20): 13

NO MERCY 389/31
When I Die (Arista)
Total Stations: 19/Chart Move: 35-27
Heavy (40+): 4 KIKI, WFHN, WNVZ, WWKX
Medium (20-39): 2 KZFM, WPOW
Light (Under 20): 13
New Airplay This Week: 1 KYLZ

LIL' KIM 369/68
Not Tonight (Undeas/Atlantic/Tommy Boy)
Total Stations: 27/Chart Move: 29-29
Heavy (40+): 1 KUBE
Medium (20-39): 5 KCAQ, KKFR, WHHH, WPOW, XHTZ
Light (Under 20): 21
New Airplay This Week: 5 KIBB, KIKI, KLUC, KQKS, WHHH

SHADES 345/-26
Serenade (Motown)
Total Stations: 16/Chart Move: 32-32
Heavy (40+): 2 KDON, KIKI
Medium (20-39): 6 KKSS, KTFM, KZFM, WFHN, WHHH, XHTZ
Light (Under 20): 8

COOLIO FEAT. 40 THEVZ 335/71
C U When U Get There (Tommy Boy)
Total Stations: 16/Chart Move: Debut 33
Heavy (40+): 2 KQKS, WKXJ
Medium (20-39): 5 KKFR, KQMQ, WHHH, WJJS, WNVZ
Light (Under 20): 9
New Airplay This Week: 2 WWKX, XHTZ

K-CI & JOJO 329/8
You Bring Me Up (MCA)
Total Stations: 18/Chart Move: 38-34
Heavy (40+): 2 WJJS, WWKX
Medium (20-39): 4 KCAQ, KDGS, KDON, WKXJ
Light (Under 20): 12
New Airplay This Week: 2 KBOS, WFHN

VERONICA FEAT. CRAIG MACK 326/-28
No One But You (H.O.L.A./Island)
Total Stations: 22/Chart Move: 37-35
Heavy (40+): 3 KBOS, KDON, WJMN
Medium (20-39): 3 KKFR, WFHN, WWKX
Light (Under 20): 16

ADINA HOWARD 272/28
(Freak) And U Know It (Mecca Don/Elektra/EEG)
Total Stations: 13/Chart Move: Debut 38
Heavy (40+): 2 KQKS, WHHH
Medium (20-39): 3 KDGS, KKFR, KOHT
Light (Under 20): 8
New Airplay This Week: 2 KIBB, WKXJ

FOXY BROWN FEAT. DRU HILL 263/81
Big Bad Mamma (Def Jam/Mercury)
Total Stations: 17/Chart Move: Debut 40
Heavy (40+): 2 KKFR, WHHH
Medium (20-39): 5 KCAQ, KYLD, KYLZ, WWKX, XHTZ
Light (Under 20): 10
New Airplay This Week: 1 WFHN

CHART BOUND

Total Plays/Gain

JON B. 250/95
Don't Say (Yab Yum/550 Music)
Total Stations: 17
Heavy (40+): 2 KSFM, KUBE
Medium (20-39): 2 KBOS, KLUC
Light (Under 20): 13
New Airplay This Week: 7 KDON, KGGI, KKFR, KKSS, KTFM, WHHH, WNVZ

JOE 247/88
The Love Scene (Jive)
Total Stations: 17
Heavy (40+): 1 KSFM
Medium (20-39): 4 KDON, KLUC, KTFM, WJJS
Light (Under 20): 12
New Airplay This Week: 6 KBOS, KIBB, KKFR, KTFM, KYLZ, WWKX

MOST NEW AIRPLAY THIS WEEK

No. Of Stations

JON B. 7
Don't Say (Yab Yum/550 Music)

INOJ 6
Love You Down (So So Def/Columbia)

JOE 6
The Love Scene (Jive)

BLACKSTREET FEAT. SLASH AND OL' DIRTY BASTARD 5
Fix (Interscope)

LIL' KIM FEAT. DA BRAT, LEFT EYE, MISSY ELLIOTT AND ANGIE MARTINEZ 5
Not Tonight (Undeas/Atlantic/Tommy Boy)

SCARFACE FEAT. 2PAC & JOHNNY P 246/3
Smile (Rap-A-Lot/Noo Trybe/Virgin)
Total Stations: 15
Heavy (40+): 3 KYLD, KYLZ, WKXJ
Medium (20-39): 2 KKFR, WHHH
Light (Under 20): 10

BLACKSTREET 233/82
Fix (Interscope)
Total Stations: 18
Heavy (40+): 1 KUBE
Medium (20-39): 4 KDON, KKFR, KLUC, WJJS
Light (Under 20): 13
New Airplay This Week: 5 KCAQ, KIBB, WFHN, WWKX, XHTZ

MR. PRESIDENT 213/30
Coco Jambo (Warner Bros.)
Total Stations: 13
Heavy (40+): 0
Medium (20-39): 4 KIOX, WFHN, WIOQ, WNVZ
Light (Under 20): 9
New Airplay This Week: 1 WIOQ

DIANA KING 208/8
I Say A Little Prayer (Work)
Total Stations: 13
Heavy (40+): 0
Medium (20-39): 6 KGGI, KOHT, WDRQ, WFHN, WIOQ, WKTU
Light (Under 20): 7

NASTYBOY KLICK FEAT. ROGER TROUTMAN 205/18
Down For Yours (NastyBoy/GlassNote/Mercury)
Total Stations: 12
Heavy (40+): 1 KYLZ
Medium (20-39): 2 KKFR, KQMQ
Light (Under 20): 9
New Airplay This Week: 4 KCAQ, KKSS, KTFM, XHTZ

MARY J. BLIGE 200/28
Everything (MCA)
Total Stations: 6
Heavy (40+): 2 KQKS, WJMN
Medium (20-39): 3 KBOS, WJJS, WWKX
Light (Under 20): 1

LIL SUZY 191/2
Can't Get You Out Of My Mind (Metropolitan)
Total Stations: 19
Heavy (40+): 0
Medium (20-39): 3 KTFM, KYLD, WIOQ
Light (Under 20): 16
New Airplay This Week: 2 WKTU, WWKX

LOS UMBRELLAS 185/83
No Tengo Dinero (EMI)
Total Stations: 11
Heavy (40+): 1 KTFM
Medium (20-39): 4 KOHT, KPRR, KZFM, WPOW
Light (Under 20): 6
New Airplay This Week: 1 KPRR

DANA HARRIS 182/-17
As We Lay (Tony Mercedes/LaFace/Arista)
Total Stations: 7
Heavy (40+): 1 KIKI
Medium (20-39): 4 KDGS, KQMQ, WHHH, XHTZ
Light (Under 20): 2

DRU HILL 172/25
Never Make A Promise (Island)
Total Stations: 13
Heavy (40+): 0
Medium (20-39): 3 KDGS, KDON, WJJS
Light (Under 20): 0
New Airplay This Week: 3 KCAQ, KKFR, XHTZ

VARIOUS ARTISTS 169/9
ESPN Presents The Jock Jam (Tommy Boy)
Total Stations: 8
Heavy (40+): 3 WBBM, WKTU, WKXJ
Medium (20-39): 0
Light (Under 20): 5

★ NU FLAVOR 162/98
Heaven (Reprise)
Total Stations: 7
Heavy (40+): 1 KYLZ
Medium (20-39): 1 WPOW
Light (Under 20): 5
New Airplay This Week: 3 KKSS, KSFM, KTFM

OMC 151/16
How Bizarre (Huh/Mercury)
Total Stations: 10
Heavy (40+): 1 WFHN
Medium (20-39): 2 KIOX, KTFM
Light (Under 20): 7
New Airplay This Week: 1 KZFM

WYCLEF JEAN FEAT. THE REFUGEE ALL STARS 138/-58
We Trying To Stay Alive (Ruffhouse/Columbia)
Total Stations: 18
Heavy (40+): 1 KCAQ
Medium (20-39): 1 WJJS
Light (Under 20): 16

REAL MCCOY 126/3
One More Time (Arista)
Total Stations: 8
Heavy (40+): 2 WIOQ, WKTU
Medium (20-39): 0
Light (Under 20): 6

RAMPAGE FEAT. BILLY LAWRENCE 112/37
Take It To The Streets (Violator/Elektra/EEG)
Total Stations: 8
Heavy (40+): 0
Medium (20-39): 3 KKFR, KYLD, XHTZ
Light (Under 20): 5

TO KOOL CHRIS 103/19
Esta Loca (Scotti Bros./All American)
Total Stations: 9
Heavy (40+): 1 KPRR
Medium (20-39): 1 KYLZ
Light (Under 20): 7

LEANN RIMES 90/13
How Do I Live (Curb)
Total Stations: 1
Heavy (40+): 1 WKXJ
Medium (20-39): 0
Light (Under 20): 0

GYRL 87/9
Get Your Groove On (Silas/MCA)
Total Stations: 7
Heavy (40+): 1 KKFR
Medium (20-39): 1 KBOS
Light (Under 20): 5

KRS-ONE 84/6
Step Into A World (Rapture's Delight) (Jive)
Total Stations: 11
Heavy (40+): 1 WWKX
Medium (20-39): 0
Light (Under 20): 10

THE NOTORIOUS B.I.G. FEAT. R. KELLY 84/3
Lovin' You Tonight (Bad Boy/Arista)
Total Stations: 8
Heavy (40+): 0
Medium (20-39): 1 WWKX
Light (Under 20): 7
New Airplay This Week: 1 KDGS

★ LISA STANSFIELD 81/26
Never, Never Gonna Give You Up (Arista)
Total Stations: 8
Heavy (40+): 0
Medium (20-39): 1 WJJS
Light (Under 20): 7
New Airplay This Week: 3 WNVZ, WWKX, XHTZ

★ CARLINHOS BROWN 81/10
A Namorada (Virgin)
Total Stations: 2
Heavy (40+): 1 WPOW
Medium (20-39): 1 WFHN
Light (Under 20): 0

★ 702 77/28
All I Want (Biv 10/Motown)
Total Stations: 7
Heavy (40+): 0
Medium (20-39): 1 WHHH
Light (Under 20): 6
New Airplay This Week: 1 XHTZ

★ MARK MORRISON 77/5
Crazy (Atlantic)
Total Stations: 6
Heavy (40+): 1 WJMN
Medium (20-39): 1 XHTZ
Light (Under 20): 4

SNOOP DOGGY DOGG FEAT. JD 76/4
We Just Wanna Party With You (Columbia)
Total Stations: 11
Heavy (40+): 0
Medium (20-39): 1 KKFR
Light (Under 20): 10

MARKIE DEE 76/2
Bounce (Crave)
Total Stations: 8
Heavy (40+): 0
Medium (20-39): 2 KCAQ, WWKX
Light (Under 20): 6
New Airplay This Week: 1 KDGS

★ WILD ORCHID 68/47
Supernatural (RCA)
Total Stations: 9
Heavy (40+): 0
Medium (20-39): 1 WNVZ
Light (Under 20): 8
New Airplay This Week: 4 KDGS, WDRQ, WIOQ, WNVZ

★ MAXWELL 65/30
Whenever Wherever Whatever (Columbia)
Total Stations: 8
Heavy (40+): 0
Medium (20-39): 0
Light (Under 20): 8
New Airplay This Week: 2 KDGS, WWKX

Airpower awarded to those records which attain 600 detections for the first time. New airplay lists those stations registering six or more detections per week on a record for the first time. ★ Initial impact: records appearing on this page for the first time.



SONG ACTIVITY REPORTS

For Week Ending July 20, 1997

98 DEGREES Invisible Man (Motown) Total Stations: 25 Chart Move: 18-13

BACKSTREET BOYS Quit Playing Games (With My Heart) (Jive) Total Stations: 31 Chart Move: 10-5

BLACKSTREET Fix (Interscope) Total Stations: 18

MARY J. BLIGE Everything (MCA) Total Stations: 6

FOXY BROWN FEAT. DRU HILL Big Bad Mamma (Def Jam/Mercury) Total Stations: 17 Chart Move: Debut 40

CHANGING FACES G.H.E.T.O.U.T. (Big Beat/Atlantic) Total Stations: 31 Chart Move: 8-8

COOLIO FEAT. 40 THEVZ C U When U Get There (Tommy Boy) Total Stations: 16 Chart Move: Debut 38

CORINA Summertime Summertime (So So Def/Columbia) Total Stations: 21 Chart Move: 27-24

DRU HILL Never Make A Promise (Island) Total Stations: 13

MISSY "MISDEMEANOR" ELLIOTT The Rain (Supa Dupa Fly) (EastWest/EEG) Total Stations: 21 Chart Move: 22-23

GINUWINE When Doves Cry (550 Music) Total Stations: 27 Chart Move: 28-20

ADINA HICWAD (Freak) And U Know It (Mecca Don/EastWest/EEG) Total Stations: 13 Chart Move: Debut 38

INOJ Love You Down (So So Def/Columbia) Total Stations: 23 Chart Move: 39-21

JOE The Love Scene (Jive) Total Stations: 17

JON B. Don't Say (Yab Yum/550 Music) Total Stations: 17

K-CI & JOJO You Bring Me Up (MCA) Total Stations: 18 Chart Move: 38-34

DIANA KING I Say A Little Prayer (Work) Total Stations: 13

LIL SUZY Can't Get You Out Of My Mind (Metropolitan) Total Stations: 19

LIL' KIM Not Tonight (Undeas/Atlantic/Tommy Boy) Total Stations: 27 Chart Move: 29-29

LOS UMBRELLAS No Tengo Dinero (EMI) Total Stations: 11

MR. PRESIDENT Coco Jambo (Warner Bros.) Total Stations: 13

NASTYBOY KLICK FEAT. ROGER TROUTMAN Down For Ycurs (NastyBoy/GlassNote/Mercury) Total Stations: 12

NO MERCY When I Die (Arista) Total Stations: 19 Chart Move: 35-27

THE MONRODUCS B.L.G. (FEAT. PUFF DADDY & MASE) No Money Mo Problems (Bad Boy/Arista) Total Stations: 30 Chart Move: 5-4

PUFF DADDY & FAITH EVANS (Feat. 112) I'll Be Missing You (Bad Boy/Arista) Total Stations: 34 Chart Move: 1-2

ROME I Belong To You (Every Time I See Your Face) (Grand Jury/RCA) Total Stations: 30 Chart Move: 3-3

SCARFACE FEAT. 2PAC & JOHNNY P Smile (Rap-A-Lot/Noo Trybe/Virgin) Total Stations: 15

SWILL SMITH Men In Black (Columbia) Total Stations: 34 Chart Move: 2-1

SPICE GIRLS 2 Become 1 (Virgin) Total Stations: 27 Chart Move: 24-12

VARIOUS ARTISTS ESPN Presents The Jock Jam (Tommy Boy) Total Stations: 8

BDS IMPACT

★ ★ ★ **AIRPOWER** ★ ★ ★
(Minimum 700 detections for the first time)

FOXY BROWN FEAT. DRU HILL 826/242
Big Bad Mamma (Def Jam/Mercury)
Total Stations: 45/Chart Move: 30-23
Heavy (30+ plays): 12 KBXX, KKFR, KMEL, KYLD, KYLZ, WHHH, WHTA, WJBT, WJMH, WPHI, WQHT, WUSL
Medium (15-29): 12 KKDA, KPWR, KRRQ, WEJM, WERQ, WFXA, WJMI, WPEG, WQOK, WQUE, WWKX, XHTZ
Light (Under 15): 21
New Airplay This Week: 8 KKBT, KKDA, WJHM, WJMH, WJMI, WJMZ, WPGC, WROU

PUFF DADDY & THE FAMILY 782/96
It's All About The Benjamins (Bad Boy/Arista)
Total Stations: 38/Chart Move: 25-25
Heavy (30+): 9 KKDA, WEJM, WHTA, WJBT, WJMH, WPGC, WPHI, WQHT, WUSL
Medium (15-29): 13 KPWR, KRRQ, WBHJ, WCKX, WERQ, WGCI, WJHM, WKYS, WPEG, WQOK, WROU, WWWZ, WYOK
Light (Under 15): 16
New Airplay This Week: 5 KKBT, KRRQ, WBTT, WJBT, WJLB

DANA HARRIS 735/50
As We Lay (Tony Mercedes/LaFace/Arista)
Total Stations: 31/Chart Move: 26-26
Heavy (30+): 9 KIKI, KQMQ, WCKX, WHHH, WJHM, WJMH, WQOK, WQUE, WWWZ
Medium (15-29): 14 KDGS, WERQ, WFXA, WJMI, WJMT, WJLB, WJMI, WKKV, WPEG, WUSL, WYOK, XHTZ
Light (Under 15): 8

AIRPOWER BOUND

MARY J. BLIGE 690/41
Everything (MCA)
Total Stations: 21/Chart Move: 28-27
Heavy (30+ plays): 11 KMEL, KQKS, WERQ, WJJS, WJMH, WJMN, WKYS, WPEG, WPGC, WPHI, WUSL
Medium (15-29): 6 KBOS, WBTT, WCKX, WJLB, WQOK, WWKX
Light (Under 15): 4
New Airplay This Week: 1 WJZB

R. KELLY 668/-27
Gotham City (Jive)
Total Stations: 34/Chart Move: 24-28
Heavy (30+): 9 WCKX, WFXA, WJZB, WHHH, WJHM, WJJS, WKKV, WKXJ, WWKX
Medium (15-29): 11 KBXX, KDGS, KDON, KIKI, KRRQ, WGCI, WIZF, WPEG, WQOK, WROU, WWWZ
Light (Under 15): 14
New Airplay This Week: 1 WEJM

BLACKSTREET 602/127
Fix (Interscope)
Total Stations: 39/Chart Move: 37-30
Heavy (30+): 4 KBXX, KDON, KUBE, WQUE
Medium (15-29): 17 KKBT, KKDA, KKFR, KLUC, KRRQ, WBTT, WFXA, WHHH, WJBT, WJJS, WJMI, WJMZ, WKKV, WQHT, WQOK, WROU, WYOK
Light (Under 15): 18
New Airplay This Week: 6 WFXA, WJZB, WJBT, WJLB, WWKX, XHTZ

LAURNEA 577/50
Can't Let Go (Yab Yum/Epic)
Total Stations: 35/Chart Move: 34-31
Heavy (30+): 4 KDON, KLUC, WHHH, WJMN
Medium (15-29): 11 KDGS, KRRQ, KUBE, WCKX, WERQ, WJZB, WJJS, WJMI, WJMZ, WQUE, XHTZ
Light (Under 15): 20
New Airplay This Week: 3 WCKX, WFXA, WJZB

THE NOTORIOUS B.I.G. (FEAT. R. KELLY) 556/23
Lovin' You Tonight (Bad Boy/Arista)
Total Stations: 38/Chart Move: 33-32
Heavy (30+): 7 KPWR, WEJM, WHTA, WJHM, WJLB, WQUE, WWKX
Medium (15-29): 9 KKDA, KRRQ, WFXA, WJMI, WPEG, WPHI, WUSL, WWWZ, WYOK
Light (Under 15): 22
New Airplay This Week: 2 KDGS, KYLD

JOE 512/113
The Love Scene (Jive)
Total Stations: 32/Chart Move: Debut 35
Heavy (30+): 5 KBXX, KLUC, KRRQ, WBHJ, WQUE
Medium (15-29): 10 KDGS, KDON, WGCI, WJHM, WJJS, WJLB, WKKV, WPEG, WPGC, XHTZ
Light (Under 15): 17
New Airplay This Week: 5 KBOS, KKDA, KKFR, KYLZ, WWKX

MAGOO AND TIMBALAND 503/210
Up Jumps Da Boogie (Blackground/Atlantic)
Total Stations: 28/Chart Move: Debut 36
Heavy (30+): 6 KBXX, KKDA, WBHJ, WEJM, WJMH, WUSL
Medium (15-29): 6 WJBT, WJMI, WPEG, WPGC, WQHT, WWWZ
Light (Under 15): 16
New Airplay This Week: 5 WBTT, WJMH, WJMI, WKYS, WQHT

GINUWINE 495/116
I'll Do Anything/I'm Sorry (550 Music/Epic)
Total Stations: 24/Chart Move: Debut 37
Heavy (30+): 6 KKDA, WEJM, WPHI, WQUE, WUSL, WWWZ

Medium (15-29): 8 KDGS, KKBT, WJZB, WJLB, WJMI, WKKV, WPEG, WROU
Light (Under 15): 10
New Airplay This Week: 5 KBXX, WJZB, WIZF, WJZM, WQOK

BACKSTREET BOYS 486/94
Quit Playing Games (With My Heart) (Jive)
Total Stations: 16/Chart Move: Re-entry 39
Heavy (30+): 8 KBOS, KDON, KIKI, KYLD, KYLZ, WJJS, WKKJ, WWKX
Medium (15-29): 3 KDGS, KQMQ, XHTZ
Light (Under 15): 5
New Airplay This Week: 1 WJMN

CHART BOUND

INOJ 437/182
Love You Down (So So Def/Columbia)
Total Stations: 18
Heavy (30+): 8 KBXX, KIKI, KKFR, KYLD, WJJS, WPOW, WWKX, XHTZ
Medium (15-29): 4 KDGS, KQKS, KQMQ, WJHM
Light (Under 15): 6
New Airplay This Week: 6 KBOS, KIKI, KLUC, KQKS, KQMQ, KYLZ

98 DEGREES 435/25
Invisible Man (Motown)
Total Stations: 16
Heavy (30+): 7 KDON, KIKI, KLUC, KQKS, KQMQ, WHHH, WJMN
Medium (15-29): 4 KDGS, KYLZ, WKXJ, WWKX
Light (Under 15): 5
New Airplay This Week: 1 XHTZ

PATTI LABELLE 417/24
When You Talk About Love (MCA)
Total Stations: 24
Heavy (30+): 6 KRRQ, WJHM, WJZM, WKKV, WQUE, WROU
Medium (15-29): 6 KDGS, WFXA, WJMI, WPEG, WQOK, WWWZ
Light (Under 15): 12
New Airplay This Week: 1 WHHH

GINUWINE 394/104
When Doves Cry (550 Music/Epic)
Total Stations: 22
Heavy (30+): 5 KDON, KIKI, KQMQ, KUBE, KYLZ
Medium (15-29): 7 KKFR, KLUC, KMEL, WHHH, WJJS, WWKX, XHTZ
Light (Under 15): 10

RAMPAGE FEAT. BILLY LAWRENCE 359/106
Take It To The Streets (Violator/Elektra/EEG)
Total Stations: 35
Heavy (30+): 1 WUSL
Medium (15-29): 9 KKFR, KMEL, KYLD, WJMH, WJMI, WPEG, WPHI, WQHT, XHTZ
Light (Under 15): 25
New Airplay This Week: 2 KKDA, WHTA

COOLIO FEAT. 40 THEVZ 349/74
C U When U Get There (Tommy Boy)
Total Stations: 18
Heavy (30+): 3 KQKS, WHHH, WKXJ
Medium (15-29): 5 KDGS, KKFR, KQMQ, WJHM, WJJS
Light (Under 15): 10
New Airplay This Week: 3 WJHM, WWKX, XHTZ

SPICE GIRLS 317/96
2 Become 1 (Virgin)
Total Stations: 13
Heavy (30+): 4 KIKI, KQMQ, KYLZ, WWKX
Medium (15-29): 7 KBOS, KDGS, KDON, KUBE, WHHH, WJJS, WJMN
Light (Under 15): 2
New Airplay This Week: 2 KDON, KUBE

MOST NEW AIRPLAY THIS WEEK No. Of Stations

AALIYAH 8
Hot Like Fire (Blackground/Atlantic)

FOXY BROWN FEAT. DRU HILL 8
Big Bad Mamma (Def Jam/Mercury)

BLACKSTREET 6
Fix (Interscope)

INOJ 6
Love You Down (So So Def/Columbia)

JON B. 6
Don't Say (Yab Yum/550 Music)

USHER 6
You Make Me Wanna... (LaFace/Arista)

USHER 299/136
You Make Me Wanna... (LaFace/Arista)
Total Stations: 25
Heavy (30+): 4 WEJM, WHTA, WQHT, WYOK
Medium (15-29): 5 KKDA, KYLZ, WJBT, WJZM, WPEG
Light (Under 15): 16
New Airplay This Week: 6 KKDA, KRRQ, KYLZ, WJMI, WQUE, WWWZ

ADINA HOWARD 293/18
[Freak] And U Know It (Mecca Doni/EastWest/EEG)
Total Stations: 21
Heavy (30+): 3 KKFR, KDGS, WHHH
Medium (15-29): 2 KDGS, WKXJ
Light (Under 15): 16
New Airplay This Week: 1 WKXJ

HEAVY D 278/-14
Keep It Comin' (Uptown/Universal)
Total Stations: 20
Heavy (30+): 1 WEJM
Medium (15-29): 9 KDGS, KKDA, KRRQ, WJHM, WJMI, WQHT, WQUE, WROU, WWWZ
Light (Under 15): 10
New Airplay This Week: 1 WIZF

MIA X FEAT. MASTER P & FOXY BROWN 258/63
The Party Don't Stop (No Limit/Priority)
Total Stations: 27
Heavy (30+): 2 KRRQ, WBHJ
Medium (15-29): 4 KBXX, WEJM, WHTA, WYOK
Light (Under 15): 21
New Airplay This Week: 4 KYLZ, WPEG, WQUE, WYOK

AALIYAH 247/135
Hot Like Fire (Blackground/Atlantic)
Total Stations: 21
Heavy (30+): 1 WQUE
Medium (15-29): 7 KKDA, WEJM, WJMI, WJZM, WPEG, WQHT, WWWZ
Light (Under 15): 13
New Airplay This Week: 8 KDGS, KKBT, KKDA, WJZB, WJHM, WKYS, WQHT, WWWZ

JON B. 246/119
Don't Say (Yab Yum/550 Music/Epic)
Total Stations: 20
Heavy (30+): 3 KLUC, KUBE, WJHM
Medium (15-29): 3 KBOS, KDON, WQUE
Light (Under 15): 14
New Airplay This Week: 6 KBXX, KDON, KKFR, WHHH, WKKV, WQUE

EIGHTBALL & MJG 240/44
Just Like Candy (Suave House/Relativity)
Total Stations: 19
Heavy (30+): 3 WBHJ, WEJM, WHTA
Medium (15-29): 1 WJMI
Light (Under 15): 15
New Airplay This Week: 3 WJBT, WJHM, WQUE

THIS WEEK	LAST WEEK	WEEKS ON	TITLE/LABEL/PROMOTION LABEL	ARTIST	DETECTIONS	TW	LW
			★ ★ ★ No. 1 ★ ★ ★				
1	1	10	PLL BE MISSING YOU	BAD BOY/ARISTA	2 weeks at No. 1	PUFF DADDY & FAITH EVANS (FEAT. 112)	2461 2581
2	3	7	MEN IN BLACK	COLUMBIA		WILL SMITH	2073 1846
3	2	11	MO MONEY MO PROBLEMS	BAD BOY/ARISTA	THE NOTORIOUS B.I.G. (FEAT. PUFF DADDY & MASE)		1932 1942
4	4	10	G.H.E.T.T.O.U.T.	BIG BEAT/ATLANTIC		CHANGING FACES	1846 1839
5	5	14	I BELONG TO YOU (EVERY TIME I SEE YOUR FACE)	GRAND JURY/RCA		ROME	1805 1837
6	6	6	STOMP	B-RITE/INTERSCOPE		GOD'S PROPERTY	1534 1594
7	7	4	THE RAIN (SUPA DUBA FLY)	EASTWEST/EEG		MISSY "MISDEMEANOR" ELLIOTT	1435 1406
8	12	4	NOT TONIGHT	UNDEAS/TOMMY BOY/ATLANTIC		LIL' KIM FEAT. DA BRAT, LEFT EYE, MISSY ELLIOTT AND ANGIE MARTINEZ	1292 1101
9	8	15	CUPID	BAD BOY/ARISTA		112	1211 1378
10	9	9	WHATEVER	EASTWEST/EEG		EN VOGUE	1200 1294
11	13	2	I CAN LOVE YOU	MCA		MARY J. BLIGE	1160 1067
12	15	2	NEVER MAKE A PROMISE	ISLAND		DRU HILL	1069 1003
13	10	2	THE SWEETEST THING	COLUMBIA	REFUGEE CAMP ALL-STARS FEAT. LAURYN HILL		1034 1152
14	11	8	LOOK INTO MY EYES	RUTHLESS/RELATIVITY		BONE THUGS-N-HARMONY	975 1104
15	14	25	DON'T LEAVE ME	INTERSCOPE		BLACKSTREET	965 1037
16	17	26	IN MY BED	ISLAND		DRU HILL	962 952
17	16	26	RETURN OF THE MACK	ATLANTIC		MARK MORRISON	902 992
18	22	2	SOMEONE	RCA	SWV (FEATURING PUFF DADDY)		880 911
19	21	5	SMILE	RAP-A-LOT/NOO TRYBE/VIRGIN	SCARFACE FEAT. 2PAC & JOHNNY P		874 916
20	19	22	CAN WE JIVE			SWV	860 939
21	20	21	HYPNOTIZE	BAD BOY/ARISTA		THE NOTORIOUS B.I.G.	838 919
22	18	2	NEXT LIFETIME	KEDAR/UNIVERSAL		ERYKAH BADU	828 940
			★ ★ ★ AIRPOWER ★ ★ ★				
23	30	2	BIG BAD MAMMA	DEF JAM/MERCURY		FOXY BROWN FEAT. DRU HILL	826 584
24	23	3	YOU BRING ME UP	MCA		K-CI & JOJO	812 833
			★ ★ ★ AIRPOWER ★ ★ ★				
25	25	2	IT'S ALL ABOUT THE BENJAMINS	BAD BOY/ARISTA		PUFF DADDY & THE FAMILY (FEAT. THE NOTORIOUS B.I.G., LIL' KIM & THE LOLO)	782 686
			★ ★ ★ AIRPOWER ★ ★ ★				
26	26	2	AS WE LAY	TONY MERCEDES/LAFACE/ARISTA		DANA HARRIS	735 685
27	28	2	EVERYTHING	MCA		MARY J. BLIGE	690 649
28	24	6	GOTHAM CITY	JIVE		R. KELLY	668 695
29	27	22	GET IT TOGETHER	BIV 10/MOTOWN		702	609 682
30	37	2	FIX	INTERSCOPE	BLACKSTREET FEAT. SLASH AND OL' DIRTY BASTARD		602 475
31	34	7	CAN'T LET GO	YAB YUM/EPIC		LAURNEA	577 527
32	33	2	LOVIN' YOU TONIGHT	BAD BOY/ARISTA		THE NOTORIOUS B.I.G.	556 533
33	32	2	WE TRYING TO STAY ALIVE	RUFFHOUSE/COLUMBIA		WYCLEF JEAN FEAT. REFUGEE ALLSTARS	547 545
34	29	2	BIG DADDY	UPTOWN/UNIVERSAL		HEAVY D	522 604
35	NEW		THE LOVE SCENE	JIVE		JOE	512 399
36	NEW		UP JUMPS DA BOOGIE	BLACKGROUND/ATLANTIC		MAGOO AND TIMBALAND	503 293
37	NEW		I'LL DO ANYTHING/I'M SORRY	550 MUSIC/EPIC		GINUWINE	495 379
38	31	3	5 MILES TO EMPTY	MJJ/WORK/EPIC		BROWNSTONE	492 582
39	RE-ENTRY		QUIT PLAYING GAMES (WITH MY HEART)	JIVE		BACKSTREET BOYS	486 392
40	35	12	DO YOU KNOW (WHAT IT TAKES)	RCA		ROBYN	469 497

Records showing an increase in detections over the previous week, regardless of chart movement. A record which has been on the chart for more than 20 weeks will not receive a bullet, even if it registers an increase in detections. Airpower awarded to those records which attain 700 detections for the first time. If two records are tied in number of plays, the record being played on more stations is placed first. Records below the top 20 are removed from the chart after 26 weeks. © 1997, Billboard/BPI Communications.

GREATEST GAINERS INCREASE IN PLAYS

FOXY BROWN FEAT. DRU HILL • <i>Big Bad Mamma (DEF JAM/MERCURY)</i>	+242
WJMH +26, WJMI +25, WHHH +25, KPWR +22, KKFR +20, KKDA +16, WPGC +14, XHTZ +13, KMEL +13, WHTA +11	
WILL SMITH • <i>Men In Black (COLUMBIA)</i>	+227
KYLZ +43, KPWR +32, WKXJ +29, WFXA +17, KRRQ +14, WCKX +14, WHHH +14, WPEG +14, WKKV +13, WJMI +12	
MAGOO AND TIMBALAND • <i>Up Jumps Da Boogie (BLACKGROUND/ATLANTIC)</i>	+210
WJMH +43, KKDA +41, WJMI +27, WUSL +24, WQHT +21, KBXX +11, WEJM +10, WBHJ +9, WKYS +6, WBTT +5	
LIL' KIM FEAT. DA BRAT, LEFT EYE, MISSY ELLIOTT AND ANGIE MARTINEZ • <i>Not Tonight (UNDEAS/TOMMY BOY/ATLANTIC)</i>	+191
WHHH +20, KUBE +17, KLUC +15, KMEL +15, WQHT +15, KPWR +13, KQKS +12, KKBT +11, KIKI +10, WJZB +10	
INOJ • <i>Love You Down (SO SO DEF/COLUMBIA)</i>	+182
KIKI +40, KQMQ +28, KQKS +23, WJHM +15, KLUC +13, XHTZ +13, WPOW +12, WJJS +10, KYLZ +9, WWKX +8	

MAXWELL

WHENEVER WHEREVER WHATEVER

The next episode from his Platinum debut album, "URBAN HANG SUITE," featuring the GOLD single, Ascension (Don't Ever Wonder). Also available, "MAXWELL UNPLUGGED™ EP," featuring new arrangements and previously unreleased songs. **IN STORES NOW.**



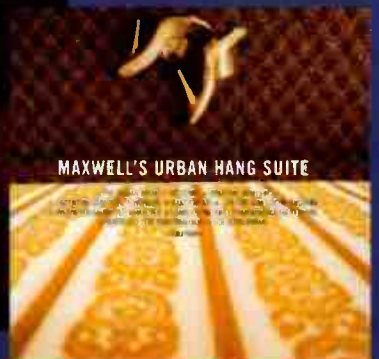
wyclef jean

WE TRYING TO STAY ALIVE

b/w Anything Can Happen

Be on the lookout for "WYCLEF JEAN PRESENTS THE CARNIVAL FEATURING REFUGEE ALL-STARS," album in stores now. His solo debut, and the follow-up to the Fugees multi-platinum album "The Score."

Up next, Guantanamo. *Can't Stop The Shinin'.*



CHARTING NEW TERRITORY IS OUR SPECIALTY



so so def BASS ALL STARS



so so def BASS ALL STARS

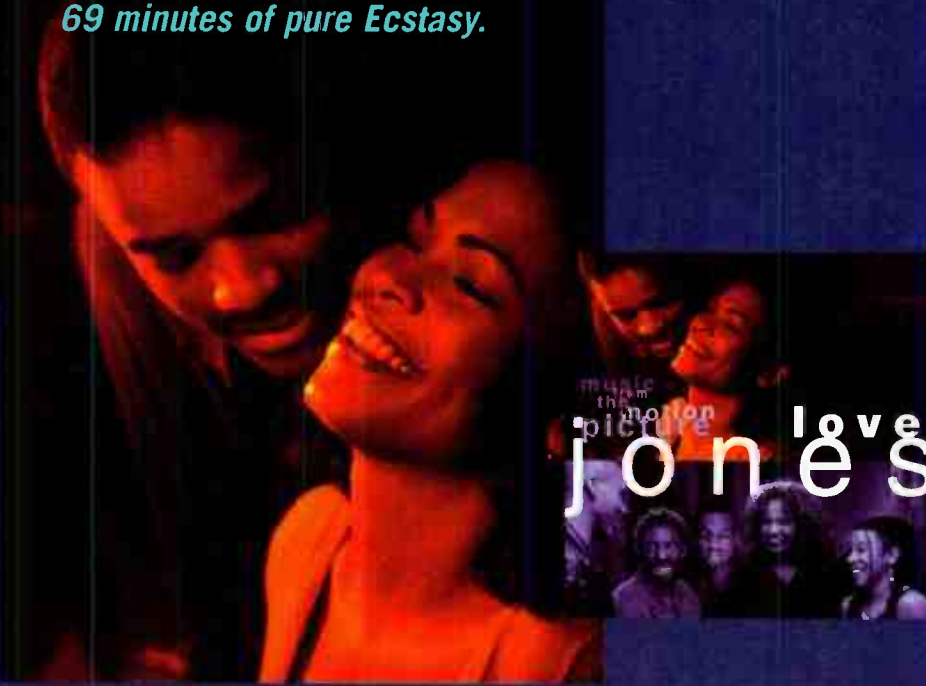
SUMMERTIME SUMMERTIME

The sizzling new single from Corina keeps that booty bouncin' all night long. Also check out Love You Down, the red-hot bass remake from INOJ. *Summer just got hotter.*

jon'e's

LOVE JONES, THE MUSIC THE SWEETEST THING

The sweetest jones of all from Lauryn Hill featuring the Refugee Camp All-Stars. "Love Jones, The Music," the GOLD album also features Maxwell, Kenny Lattimore, Groove Theory, Me'Shell NdegéOcello, Xscape, Trina Broussard's debut, and the smash single from Dionne Farris, Hopeless. *69 minutes of pure Ecstasy.*



jon'e's

POWER PLAYLISTS

For Week Ending July 20, 1997



Playlists supplied by Broadcast Data Systems' Radio Track service...

HOT 97 WQHT New York PD: Steve Smith APD/MD: Tracy Clotherapy MC: Deneen Womack

POWER 106 KPWR Los Angeles PD: Michelle Mercer MD: Damion Young

THE BEAT KKBT Los Angeles OM: Harold Austin APD: Maurice De Voe MD: Mariama Snider

WGCI Chicago PD: Elroy R.C. Smith APD/MD: Don E. Cologne

POWER 99 WUSL Philadelphia OM: Helen Little PD: Gary Young MD: Glenn Cooper

KMEL San Francisco PD: Michelle Santosuosso APD: Joey Arbogay

WPGC Washington, DC PD: Jay Stevens APD: Bob Holmcraans MD: Albie Dee

WJLB Detroit PD: Michael Saunders MD: Frankie Darcell

THE BOX KBXX Houston PD: Robert Scorpio MD: Greg Head MC: Kashon Powell

WKYS Washington, DC VP/Pgm: Steve Hegwood MD: Damon Williams MC: Lisa Lisa

K104 Dallas PD: Skip Cheatham

WE-JAM 950 WEJM Chicago PD: Jay Alan MC: Randy Scott

HOT 97.5 WHTA Atlanta VP/Pgm: Steve Hegwood PD: Sean Taylor MD: Chaka Zulu

PHILLY 103.9 WPHI Philadelphia PD: Mic Fox MC: Al B. Syk

92Q WERQ Baltimore PD: Tom Calococco MD: Coka

Q93 WQUE New Orleans OM: Gerod Stevens MD: Angela Harrison

102 JAMZ WJHM Orlando OM: Adam Cook PD: Russ Allen MD: Cedric Hollywood

POWER 98 WPEQ Charlotte PD: Andre Carson MD: Nate Quick

102 JAMZ WJMH Greensboro PD: Brian Douglas MD: Mary K.

K97.5 WQOK Raleigh PD/MD: Hozie Mack

V100 WKKV Milwaukee PD: Nate Bell MD: Kevin Hart

THE WIZ WIZF Cincinnati VP/Pgm: Tony Fields MD: Lauri Jones

95.7 JAMZ WBHJ Birmingham PD: Mickey Johnson APD/MD: Daysha Parker

107.3 JAMZ WIMZ Greenville PD: Mary Hankston MD: Kelly Berry

For Week Ending July 20, 1997

Detailed song tracking information for the last 3 weeks for all songs showing increased play this week. Total plays and gain do not include video play. Markets listed in order of population.

98 DEGREES Invisible Man (Motown) Total Stations: 16

BACKSTREET BOYS Quit Playing Games (With My Heart) (Jive) Total Stations: 16

BLACKSTREET Fix (Interscope) Total Stations: 39

MARY J. BLIGE I Can Love You (MCA) Total Stations: 35

MARY J. BLIGE Everything (MCA) Total Stations: 21

FOXY BROWN FEAT. DRU HILL Big Bad Mama (Def Jam/Mercury) Total Stations: 45

CHANGING FACES G.H.E.T.T.O.U.T. (Big Beat/Antiatic) Total Stations: 52

DRU HILL Never Make A Promise (Island) Total Stations: 42

MISSY "MISDEMEANOR" ELLIOTT The Rain (Supa Dupa Fly) (EastWest/EEG) Total Stations: 51

GINUWINE I'll Do Anything I'm Sorry (550 Music/Epic) Total Stations: 24

DANA HARRIS As We Lay (Tony Mercades/LaFace/Arista) Total Stations: 31

INOJ Love You Down (So So Def/Columbia) Total Stations: 18

JOE The Love Scene (Jive) Total Stations: 32

PATTI LABELLE When You Talk About Love (MCA) Total Stations: 24

LAURNEA Can't Let Go (Yab Yum/Epic) Total Stations: 35

LIL' KIM Not Tonight (Undeas/Tommy Boy/Antiatic) Total Stations: 52

MAGOO AND TIMBALAND Up Jumps Da Boogie (Blackground/Antiatic) Total Stations: 28

THE NOTORIOUS B.I.G. (FEAT. R. KELLY) Lovin' You Tonight (Bad Boy/Arista) Total Stations: 38

PUFF DADDY & THE FAMILY It's All About The Benjamins (Bad Boy/Arista) Total Stations: 38

WILL SMITH Men In Black (Columbia) Total Stations: 50

TOP 40 AIRPLAY MONITOR

For Week Ending July 20, 1997



Playlists supplied by Broadcast Data Systems' Radio Track service. Songs ranked by number of plays in monitored week. Playlists are listed in order of TSA weekly cumes, beginning with the highest-cuming station. Cumes are updated twice yearly following the release of the Spring and Fall Arbitron surveys. The number of stations shown each week varies depending upon space.

WPLJ WPLJ New York VP/Pgmgr: Tom Cuddy PD: Scott Shannon. Top 30 playlist including songs like 'Mercedith Brooks, Bitch' and 'Shawn Colvin, Sunny Came Home'.

STAR 104.5 WYXR Philadelphia OM: Dave Allan APD/MD: Rich Davis. Top 30 playlist including songs like 'R. Kelly, I Believe I Can Fly' and 'Jewel, You Were Meant For Me'.

Q95.5 WKQI Detroit PD/MD: Tom O'Brien. Top 30 playlist including songs like 'The Wallflowers, One Headlight' and 'Hanson, Mmmbop'.

WPNT WPNT Chicago APD/MD: Lynne Murray. Top 30 playlist including songs like 'Jewel, You Were Meant For Me' and 'Shawn Colvin, Sunny Came Home'.

MIX 96.5 KHMV Houston PD: Pat Paxton APD/MD: Rich Anhorn. Top 30 playlist including songs like 'OMC, How Bizarre' and 'Sister Hazel, All For You'.

MIX 107.3 WRQX Washington, DC OM/MD: Randy James MD: Carol Parker. Top 30 playlist including songs like 'Sister Hazel, All For You' and 'Sarah McLachlan, Possession'.

KS95 KSTP Minneapolis PD: Todd Fisher MD: Leighton Peck. Top 30 playlist including songs like 'Sister Hazel, All For You' and 'Shawn Colvin, Sunny Came Home'.

MIX 106.5 WWMX Baltimore PD: Adam Goodman MD: Greg Carpenter. Top 30 playlist including songs like 'Duncan Sheik, Barely Breathing' and 'Sister Hazel, All For You'.

Q104 WQAL Cleveland PD: Mary Ellen Kachinske MD: Steve Brown. Top 30 playlist including songs like 'The Wallflowers, One Headlight' and 'Sister Hazel, All For You'.

KYKY KYKY St. Louis PD: Smokey Rivers MD: Greg Hewitt. Top 30 playlist including songs like 'Sister Hazel, All For You' and 'Shawn Colvin, Sunny Came Home'.

STAR 101.5 KPLZ Seattle OM: Rob Dunlop PD: Kent Phillips. Top 30 playlist including songs like 'The Verve Pipe, The Freshmen' and 'Duncan Sheik, Barely Breathing'.

VARIETY 96 WWTY Pittsburgh PD: Bruce Gilbert MD: Scott Alexander. Top 30 playlist including songs like 'No Doubt, Don't Speak' and 'Jewel, You Were Meant For Me'.

MIX 105.1 WOMX Orlando PD: David Isreal MD: Tim Baldwin. Top 30 playlist including songs like 'Donna Lewis, I Love You Always Forever' and 'Sheryl Crow, Everyday Is A Winding Road'.

94KTI WKTI Milwaukee PD: Danny Clayton APD/MD: Leonard Peace. Top 30 playlist including songs like 'Hanson, Mmmbop' and 'Sister Hazel, All For You'.

KISS 106 KBKS Seattle PD: Mike Preston APD/MD: Chet Buchanan. Top 30 playlist including songs like 'Third Eye Blind, Semi-Charmed Life' and 'The Verve Pipe, The Freshmen'.

THE RIVER WRVV Nashville PD: Charlie Quinn MD: Scooter. Top 30 playlist including songs like 'Duncan Sheik, Barely Breathing' and 'Shawn Colvin, Sunny Came Home'.

MIX 99.1 WMYX Milwaukee PD/MD: Brian Kelly APD: Jim Morales. Top 30 playlist including songs like 'Hanson, Mmmbop' and 'Duncan Sheik, Barely Breathing'.

MIX 96 WMTX Tampa PD/MD: Chuck Morgan. Top 30 playlist including songs like 'Shawn Colvin, Sunny Came Home' and 'Hanson, Mmmbop'.

WSNE Providence PD: Bill Weston APD/MD: Jack Casey. Top 30 playlist including songs like 'Paula Cole, Where Have All The Cowboys G' and 'Shawn Colvin, Sunny Came Home'.

KISS FM WAKS Tampa PD: Mason Dixon MD: Rico Blanco. Top 30 playlist including songs like 'The Wallflowers, One Headlight' and 'Shawn Colvin, Sunny Came Home'.

KISS 97 KISN Salt Lake City PD/MD: Burke Allen. Top 30 playlist including songs like 'Hanson, Mmmbop' and 'Bob Carlisle, Butterfly Kisses'.

FM100 WMC Memphis PD: Russ Morley MD: Bruce Wayne. Top 30 playlist including songs like 'Sister Hazel, All For You' and 'Jewel, You Were Meant For Me'.

MAGIC 105 KSMG San Antonio PD: Andy Holt MD: Darla Thomas. Top 30 playlist including songs like 'Sarah McLachlan, Possession' and 'Jewel, You Were Meant For Me'.

THE EAGLE WKZL Greensboro PD: Jeff McHugh MD: Doug McKnight. Top 30 playlist including songs like 'Mighty Mighty Bosstones, The Impression' and 'OMC, How Bizarre'.

BDS IMPACT

★ ★ ★ **AIRPOWER** ★ ★ ★
(Minimum 700 detections for the first time)

JEWEL 907/232
Foolish Games (Atlantic)
Total Stations: 49/Chart Move: 21-18
Heavy (30+ plays): 9 KBBT, KFMB, KMFB, KZZO, KZZP, WALC, WMXB, WPLL, WQAL
Medium (15-29): 18 KBKS, KDMX, KHM, KPLZ, KSMG, KYSR, KVVU, KYSR, WAEV, WEZB, WJDX, WKTI, WMC, WMXS, WRQX, WSHE, WTIC, WWMX
Light (Under 15): 22
New Airplay This Week: 13 KBEE, KISN, KKOB, KSMG, WBAM, WDBZ, WJDX, WKQI, WLNK, WQLH, WRVW, WWDE, WWMX

TONIC 768/171
If You Could Only See (Polydor/A&M)
Total Stations: 36/Chart Move: 22-20
Heavy (30+): 6 KBBT, KLLC, KMFB, KPEK, KTNP, KZZO, WALC, WPTE
Medium (15-29): 11 KHM, KYSR, KYSR, KZZP, WAEV, WEZB, WKDD, WLUP, WMXB, WPLL, WSHE
Light (Under 15): 17
New Airplay This Week: 6 KDMX, WLNK, WMC, WMXB, WQAL, WSHE

AIRPOWER BOUND

MATCHBOX 20 693/145
Push (Lava/Atlantic)
Total Stations: 41/Chart Move: 26-21
Heavy (30+ plays): 5 KMFB, WALC, WKQI, WLUP, WSHE
Medium (15-29): 17 KBBT, KBKS, KPLZ, KTNP, KYSR, KVVU, KYSR, KZZO, KZZP, WBMX, WDBZ, WLNK, WPLJ, WPLL, WPTE, WQLH, WRVW
Light (Under 15): 19
New Airplay This Week: 4 KTNP, WEZB, WKZL, WPTE

THE WALLFLOWERS 686/120
The Difference (Interscope)
Total Stations: 30/Chart Move: 24-22
Heavy (30+): 6 KFMB, KMFB, KPEK, KZZP, WBMX, WMXB
Medium (15-29): 19 KBBT, KDMX, KHM, KLLC, KPLZ, KVVU, KYSR, WAEV, WBAM, WDBZ, WEZB, WKZL, WLNK, WLUP, WPTE, WQLH, WRQX, WSHE, WTIC
Light (Under 15): 5
New Airplay This Week: 4 KTNP, KVVU, KYSR, WSHE

SARAH MCLACHLAN 646/84
Building A Mystery (Arista)
Total Stations: 32/Chart Move: 25-23
Heavy (30+): 3 KYSR, WBMX, WPLL
Medium (15-29): 19 KBBT, KBKS, KDMX, KHM, KLLC, KPLZ, KYSR, KVVU, KZZP, WALC, WBAM, WKDD, WKZL, WLNK, WMXB, WPTE, WTIC, WTMX, WWMX
Light (Under 15): 10
New Airplay This Week: 5 KMFB, KVVU, WALC, WKDD, WSNE

PAULA COLE 563/191
I Don't Want To Wait (Imago/Warner Bros.)
Total Stations: 32/Chart Move: 37-25
Heavy (30+): 3 KBBT, WALC, WQAL
Medium (15-29): 19 KBKS, KHM, KLLC, KPEK, KPLZ, KSMG, WAEV, WDBZ, WJDX, WLNK, WMC, WMTX, WMXB, WMXS, WPLL, WPTE, WSHE, WTMX, WWMX
Light (Under 15): 10
New Airplay This Week: 9 KBEE, KBKS, KYSR, KYKY, WALC, WJDX, WQLH, WRVW, WSHE

SAVAGE GARDEN 502/75
To The Moon And Back (Columbia)
Total Stations: 25/Chart Move: 32-27
Heavy (30+): 5 KBKS, KHM, WALC, WQAL, WQLH
Medium (15-29): 12 KDMX, KISN, KPEK, KPLZ, KZZP, WAKS, WKQI, WMXB, WPTE, WRVW, WSHE, WTIC
Light (Under 15): 8
New Airplay This Week: 2 WALC, WKDD

ABRA MOORE 492/43
Four Leaf Clover (Arista Austin/Arista)
Total Stations: 32/Chart Move: 30-28
Heavy (30+): 4 KBBT, KPEK, KYSR, WBMX

Medium (15-29): 10 KHM, KLLC, KZZO, KZZP, WBAM, WPTE, WQLH, WSHE, WTMX, WWMX
Light (Under 15): 18
New Airplay This Week: 5 KDMX, KTNP, WKZL, WPTE, WWDE

BACKSTREET BOYS 481/120
Quit Playing Games (With My Heart) (Jive)
Total Stations: 32/Chart Move: 40-29
Heavy (30+): 6 KBKS, KSII, WAKS, WKQI, WPNT, WQLH
Medium (15-29): 10 WEZB, WKDD, WKTI, WMTX, WMXL, WMYX, WPLJ, WRVW, WSNE, WYXR
Light (Under 15): 16
New Airplay This Week: 2 WMTX, WYXR

THE MIGHTY MIGHTY BOSSTONES 404/62
The Impression That I Got (Big Rig/Mercury)
Total Stations: 24/Chart Move: Debut 33
Heavy (30+): 6 KBBT, KFMB, KYSR, WALC, WBMX, WKZL
Medium (15-29): 5 KBKS, KLLC, KTNP, WBAM, WLNK
Light (Under 15): 13
New Airplay This Week: 2 KPEK, WDBZ

MEXICO 70 390/-5
I Want You (Big Pop/Red Ant)
Total Stations: 23/Chart Move: 35-34
Heavy (30+): 4 KZZO, WPTE, WSHE, WTMX
Medium (15-29): 8 KVVU, KZZP, WDBZ, WKZL, WMXB, WPLL, WQAL, WQLH
Light (Under 15): 11
New Airplay This Week: 2 WAKS, WMXB

CHART BOUND

SNEAKER PIMPS 294/4
6 Underground (Clean Up/Virgin)
Total Stations: 16
Heavy (30+): 3 KFMB, KPEK, WALC
Medium (15-29): 6 KYSR, KVVU, KYSR, WPTE, WSHE, WTMX
Light (Under 15): 7
New Airplay This Week: 2 WBAM, WSHE

BETTER THAN EZRA 288/23
Desperately Wanting (Swell/Elektra/EEG)
Total Stations: 13
Heavy (30+): 5 KMFB, KZZO, WALC, WDBZ, WMXB
Medium (15-29): 1 KBBT
Light (Under 15): 7

ROBYN 270/50
Do You Know (What It Takes) (RCA)
Total Stations: 16
Heavy (30+): 3 KBKS, WKDD, WQLH
Medium (15-29): 6 KSII, WKTI, WMXL, WMYX, WPNT, WRVW
Light (Under 15): 7
New Airplay This Week: 2 KBEE, KSII

MOST NEW AIRPLAY THIS WEEK

JEWEL 13
Foolish Games (Atlantic)

PAULA COLE 9
I Don't Want To Wait (Imago/Warner Bros.)

HANSON 7
Where's The Love (Mercury)

TONIC 6
If You Could Only See (Polydor/A&M)

HANSON 261/148
Where's The Love (Mercury)
Total Stations: 22
Heavy (30+): 0
Medium (15-29): 8 KBKS, KPLZ, WAKS, WEZB, WJDX, WKQI, WMXS, WPLJ
Light (Under 15): 14
New Airplay This Week: 7 KHM, KPEK, KSII, KZZP, WJDX, WMXS, WPLJ

DUNCAN SHEIK 231/31
She Runs Away (Atlantic)
Total Stations: 16
Heavy (30+): 2 WPLL, WTMX
Medium (15-29): 7 KBBT, KLLC, WDBZ, WMC, WMXS, WQAL, WTIC
Light (Under 15): 7
New Airplay This Week: 4 KBBT, WMXB, WPTE, WQAL

SPICE GIRLS 166/50
2 Become 1 (Virgin)
Total Stations: 13
Heavy (30+): 1 KSII
Medium (15-29): 5 KBKS, WAKS, WEZB, WQLH, WRVW
Light (Under 15): 7
New Airplay This Week: 1 WKQI

BABYFACE 158/15
How Come, How Long (Epic)
Total Stations: 11
Heavy (30+): 0
Medium (15-29): 5 KSII, KSSK, WKTI, WMXL, WQLH
Light (Under 15): 6
New Airplay This Week: 1 WAKS

COLLECTIVE SOUL 114/8
Listen (Atlantic)
Total Stations: 10
Heavy (30+): 2 KPEK, WLUP
Medium (15-29): 1 KMFB
Light (Under 15): 7

GINA G 111/2
Gimme Some Love (Eternal/Warner Bros.)
Total Stations: 27
Heavy (30+): 1 WQLH
Medium (15-29): 0
Light (Under 15): 26

TRIO 107/28
Da, Da, Da... (Mercury)
Total Stations: 16
Heavy (30+): 0
Medium (15-29): 3 KMFB, KPEK, WPLL
Light (Under 15): 13
New Airplay This Week: 1 KMFB

FIONA APPLE 82/5
Criminal (Clean State/Work)
Total Stations: 5
Heavy (30+): 1 WPLL
Medium (15-29): 2 KYSR, WBMX
Light (Under 15): 2
New Airplay This Week: 1 KBBT

LEANN RIMES 71/9
How Do I Live (Curb)
Total Stations: 5
Heavy (30+): 1 WEZB

THIS WEEK	LAST WEEK	WEEKS ON	TITLE/LABEL/PROMOTION LABEL	ARTIST	DETECTIONS	
					TW	LW
			★ ★ ★ NO. 1 ★ ★ ★			
1	1	23	SUNNY CAME HOME COLUMBIA 6 weeks at No. 1	SHAWN COLVIN	2391	2432
(2)	3	14	ALL FOR YOU UNIVERSAL	SISTER HAZEL	2315	2179
3	2	24	ONE HEADLIGHT INTERSCOPE	THE WALLFLOWERS	2175	2265
(4)	6	13	SEMI-CHARMED LIFE ELEKTRA/EEG	THIRD EYE BLIND	1865	1756
(5)	5	11	A CHANGE WOULD DO YOU GOOD A&M	SHERYL CROW	1861	1849
6	4	40	BARELY BREATHING ATLANTIC	DUNCAN SHEIK	1842	1956
7	7	14	THE FRESHMEN RCA	THE VERVE PIPE	1718	1733
(8)	13	12	HOW BIZARRE HUH/MERCURY	OMC	1580	1392
9	8	17	MMMBOP MERCURY	HANSON	1570	1667
10	10	23	CRASH INTO ME RCA	DAVE MATTHEWS BAND	1531	1522
11	9	37	YOU WERE MEANT FOR ME ATLANTIC	JEWEL	1472	1568
12	11	26	I WANT YOU COLUMBIA	SAVAGE GARDEN	1364	1462
13	12	27	WHERE HAVE ALL THE COWBOYS GONE? IMAGO/WARNER BROS.	PAULA COLE	1249	1399
14	14	15	BITCH CAPITOL	MEREDITH BROOKS	1127	1173
15	15	40	DON'T SPEAK TRAUMA/INTERSCOPE	NO DOUBT	1119	1139
(16)	16	10	SHAME ON YOU EPIC	INDIGO GIRLS	1098	1065
(17)	17	5	MORE THAN THIS GEFEN	10,000 MANIACS	1050	982
			★ ★ ★ AIRPOWER ★ ★ ★			
(18)	21	3	FOOLISH GAMES ATLANTIC	JEWEL	907	675
19	18	36	LOVEFOOL TRAMPOLINE/STOCKHOLM/MERCURY	THE CARDIGANS	794	823
			★ ★ ★ AIRPOWER ★ ★ ★			
(20)	22	5	IF YOU COULD ONLY SEE POLYDOR/A&M	TONIC	768	597
(21)	26	4	PUSH LAVA/ATLANTIC	MATCHBOX 20	693	548
(22)	24	3	THE DIFFERENCE INTERSCOPE	THE WALLFLOWERS	686	566
(23)	25	4	BUILDING A MYSTERY ARISTA	SARAH MCLACHLAN	646	562
24	20	9	DAYLIGHT FADING DGC/GEFFEN	COUNTING CROWS	613	733
(25)	37	2	I DON'T WANT TO WAIT IMAGO/WARNER BROS.	PAULA COLE	563	372
(26)	27	20	I BELIEVE I CAN FLY WARNER SUNSET/ATLANTIC/JIVE	R. KELLY	544	532
(27)	32	3	TO THE MOON AND BACK COLUMBIA	SAVAGE GARDEN	502	427
(28)	30	4	FOUR LEAF CLOVER ARISTA AUSTIN/ARISTA	ABRA MOORE	492	449
(29)	40	2	QUIT PLAYING GAMES (WITH MY HEART) JIVE	BACKSTREET BOYS	484	361
30	23	12	BUTTERFLY KISSES DIADEM/JIVE	BOB CARLISLE	469	566
31	28	11	SAY YOU'LL BE THERE VIRGIN	SPICE GIRLS	459	467
32	29	12	I WANNA BE THERE EMI	BLESSID UNION OF SOULS	429	464
(33)	NEW		THE IMPRESSION THAT I GET BIG RIG/MERCURY	THE MIGHTY MIGHTY BOSSTONES	404	342
34	35	6	I WANT YOU BIG POP/RED ANT	MEXICO 70	390	395
35	33	18	YOUR WOMAN BRILLIANT/CHRYSALIS/EMI	WHITE TOWN	375	426
36	36	14	FOR YOU I WILL ROWDY/WARNER SUNSET/ATLANTIC	MONICA	366	386
37	31	11	WAKE ME UP (WHEN THE WORLD'S WORTH WAKING UP FOR) CAPPORTRHOLLYWOOD	KYLE VINCENT	338	444
38	38	8	IT'S NO GOOD MUTE/REPRISE	DEPECHE MODE	336	363
39	RE-ENTRY		SILENT ALL THESE YEARS ATLANTIC	TORI AMOS	315	353
40	39	21	SECRET GARDEN COLUMBIA	BRUCE SPRINGSTEEN	309	361

Records showing an increase in detections over the previous week, regardless of chart movement. A record which has been on the chart for more than 20 weeks will not receive a bullet, even if it registers an increase in detections. Airpower awarded to those records which attain 700 detections for the first time. If two records are tied in number of plays, the record being played on more stations is placed first. Records below the top 20 are removed from the chart after 26 weeks. © 1997, Billboard/BPI Communications.

Medium (15-29): 1 WMXS
Light (Under 15): 3

★ **SUGAR RAY 69/22**
Fly (Lava/Atlantic)
Total Stations: 4
Heavy (30+): 2 KBBT, KFMB
Medium (15-29): 0
Light (Under 15): 2

★ **MR. PRESIDENT 63/12**
Coco Jambo (Warner Bros.)
Total Stations: 13
Heavy (30+): 0
Medium (15-29): 1 WQLH
Light (Under 15): 12
New Airplay This Week: 1 WKQI

★ **BILLY JOEL 63/36**
To Make You Feel My Love (Columbia)
Total Stations: 10
Heavy (30+): 0
Medium (15-29): 1 WOMX
Light (Under 15): 9
New Airplay This Week: 3 WAKS, WKQI, WRQX

★ **WILL SMITH 62/24**
Men In Black (Columbia)
Total Stations: 16
Heavy (30+): 0
Medium (15-29): 1 WQLH
Light (Under 15): 15
New Airplay This Week: 1 KBKS

AIRPLAY Monitor SONG ACTIVITY REPORTS

For Week Ending July 20, 1997

ADULT TOP 40

10,000 MANIACS		1050/68	
More Than This (Geffen)			
Total Stations: 61			
Chart Move: 17-17			
City	Station	IP	10,000 Maniacs
New York	WDBZ	31 31 24 113	10,000 Maniacs
LA	WFLA	24 24 1 49	10,000 Maniacs
Chicago	WLUP	27 27 36 123	10,000 Maniacs
San Fran.	WMLP	15 8 1 24	10,000 Maniacs
Houston	WPMX	45 52 52 174	10,000 Maniacs
Dallas	KLIC	42 30 34 134	10,000 Maniacs
Phoenix	WYXR	13 13 11 51	10,000 Maniacs
Detroit	WQOI	10 10 11 51	10,000 Maniacs
Wash., DC	KDMX	19 12 31 123	10,000 Maniacs
Houston	WRXO	8 13 21 93	10,000 Maniacs
Boston	WRXO	29 39 36 139	10,000 Maniacs
MIAMI	WPMX	8 7 7 53	10,000 Maniacs
Seattle	KBKS	23 23 23 100	10,000 Maniacs
San Diego	KFLZ	27 27 1 61	10,000 Maniacs
Min.	KSTP	1 1 1 1	10,000 Maniacs
St. Louis	KYKY	1 1 1 1	10,000 Maniacs
Balt.	WMMX	27 27 1 52	10,000 Maniacs
Phoen.	KZPP	27 26 25 122	10,000 Maniacs
Tampa	WAKS	1 1 1 1	10,000 Maniacs
Cleveland	WTKL	30 25 19 74	10,000 Maniacs
Port, OR	KBBT	29 29 30 250	10,000 Maniacs
MIAMI	WTKL	2 2 2 6	10,000 Maniacs
Sacram.	KZKO	39 34 37 204	10,000 Maniacs
Provi.	WSNE	19 13 9 42	10,000 Maniacs
Norfolk	WPTD	23 24 21 59	10,000 Maniacs
	WUDE	10 11 1 21	10,000 Maniacs

PAULA COLE		563/191	
I Don't Want To Wait (Imago/Warner Bros.)			
Total Stations: 32			
Chart Move: 37-25			
City	Station	IP	Paula Cole
New York	WDBZ	22 23 12 57	Paula Cole
LA	WFLA	-	Paula Cole
Chicago	WLUP	-	Paula Cole
San Fran.	WMLP	-	Paula Cole
Houston	WPMX	-	Paula Cole
Dallas	KLIC	-	Paula Cole
Phoenix	WYXR	-	Paula Cole
Detroit	WQOI	-	Paula Cole
Wash., DC	KDMX	-	Paula Cole
Houston	WRXO	-	Paula Cole
Boston	WRXO	-	Paula Cole
MIAMI	WPMX	-	Paula Cole
Seattle	KBKS	-	Paula Cole
San Diego	KFLZ	-	Paula Cole
Min.	KSTP	-	Paula Cole
St. Louis	KYKY	-	Paula Cole
Balt.	WMMX	-	Paula Cole
Phoen.	KZPP	-	Paula Cole
Tampa	WAKS	-	Paula Cole
Cleveland	WTKL	-	Paula Cole
Port, OR	KBBT	-	Paula Cole
MIAMI	WTKL	-	Paula Cole
Sacram.	KZKO	-	Paula Cole
Provi.	WSNE	-	Paula Cole
Norfolk	WPTD	-	Paula Cole
	WUDE	-	Paula Cole

SHERYL CROW		1861/12	
A Change Would Do You Good (A&M)			
Total Stations: 62			
Chart Move: 5-5			
City	Station	IP	Sheryl Crow
New York	WDBZ	13 5 15 73	Sheryl Crow
LA	WFLA	31 26 23 181	Sheryl Crow
Chicago	WLUP	27 32 16 222	Sheryl Crow
San Fran.	WMLP	1 1 1 6	Sheryl Crow
Houston	WPMX	4 10 16 47	Sheryl Crow
Dallas	KLIC	44 42 31 155	Sheryl Crow
Phoenix	WYXR	1 1 1 5	Sheryl Crow
Detroit	WQOI	29 27 30 179	Sheryl Crow
Wash., DC	KDMX	23 21 14 137	Sheryl Crow
Houston	WRXO	38 42 42 349	Sheryl Crow
Boston	WRXO	15 5 9 39	Sheryl Crow
MIAMI	WPMX	6 6 12 12	Sheryl Crow
Seattle	KBKS	33 33 33 226	Sheryl Crow
San Diego	KFLZ	29 34 30 309	Sheryl Crow
Min.	KSTP	5 13 23 234	Sheryl Crow
St. Louis	KYKY	4 10 9 75	Sheryl Crow
Balt.	WMMX	68 68 70 486	Sheryl Crow
Phoen.	KZPP	68 68 70 486	Sheryl Crow
Tampa	WAKS	1 1 1 1	Sheryl Crow
Cleveland	WTKL	32 32 28 217	Sheryl Crow
Port, OR	KBBT	37 37 42 587	Sheryl Crow
MIAMI	WTKL	31 31 31 389	Sheryl Crow
Sacram.	KZKO	50 52 40 347	Sheryl Crow
Provi.	WSNE	20 17 14 77	Sheryl Crow
Norfolk	WPTD	39 38 40 344	Sheryl Crow
	WUDE	27 13 13 64	Sheryl Crow

AZ YET FEAT. PETER CETERA		477/71	
Hard To Say I'm Sorry (LaFace/Arista)			
Total Stations: 42			
Chart Move: 18-16			
City	Station	IP	Az Yet
New York	WDBZ	12 12 12 48	Az Yet
LA	WFLA	8 8 7 43	Az Yet
Chicago	WLUP	14 8 6 86	Az Yet
San Fran.	WMLP	1 1 1 6	Az Yet
Houston	WPMX	4 10 16 47	Az Yet
Dallas	KLIC	44 42 31 155	Az Yet
Phoenix	WYXR	1 1 1 5	Az Yet
Detroit	WQOI	29 27 30 179	Az Yet
Wash., DC	KDMX	23 21 14 137	Az Yet
Houston	WRXO	38 42 42 349	Az Yet
Boston	WRXO	15 5 9 39	Az Yet
MIAMI	WPMX	6 6 12 12	Az Yet
Seattle	KBKS	33 33 33 226	Az Yet
San Diego	KFLZ	29 34 30 309	Az Yet
Min.	KSTP	5 13 23 234	Az Yet
St. Louis	KYKY	4 10 9 75	Az Yet
Balt.	WMMX	68 68 70 486	Az Yet
Phoen.	KZPP	68 68 70 486	Az Yet
Tampa	WAKS	1 1 1 1	Az Yet
Cleveland	WTKL	32 32 28 217	Az Yet
Port, OR	KBBT	37 37 42 587	Az Yet
MIAMI	WTKL	31 31 31 389	Az Yet
Sacram.	KZKO	50 52 40 347	Az Yet
Provi.	WSNE	20 17 14 77	Az Yet
Norfolk	WPTD	39 38 40 344	Az Yet
	WUDE	27 13 13 64	Az Yet

BACKSTREET BOYS		229/91	
Quit Playing Games (With My Heart) (Jive)			
Total Stations: 18			
Chart Move: Debut 29			
City	Station	IP	Backstreet Boys
New York	WDBZ	10 6 5 21	Backstreet Boys
LA	WFLA	-	Backstreet Boys
Chicago	WLUP	-	Backstreet Boys
San Fran.	WMLP	-	Backstreet Boys
Houston	WPMX	-	Backstreet Boys
Dallas	KLIC	-	Backstreet Boys
Phoenix	WYXR	-	Backstreet Boys
Detroit	WQOI	-	Backstreet Boys
Wash., DC	KDMX	-	Backstreet Boys
Houston	WRXO	-	Backstreet Boys
Boston	WRXO	-	Backstreet Boys
MIAMI	WPMX	-	Backstreet Boys
Seattle	KBKS	-	Backstreet Boys
San Diego	KFLZ	-	Backstreet Boys
Min.	KSTP	-	Backstreet Boys
St. Louis	KYKY	-	Backstreet Boys
Balt.	WMMX	-	Backstreet Boys
Phoen.	KZPP	-	Backstreet Boys
Tampa	WAKS	-	Backstreet Boys
Cleveland	WTKL	-	Backstreet Boys
Port, OR	KBBT	-	Backstreet Boys
MIAMI	WTKL	-	Backstreet Boys
Sacram.	KZKO	-	Backstreet Boys
Provi.	WSNE	-	Backstreet Boys
Norfolk	WPTD	-	Backstreet Boys
	WUDE	-	Backstreet Boys

INDIGO GIRLS		1098/33	
Shame On You (Epic)			
Total Stations: 55			
Chart Move: 16-16			
City	Station	IP	Indigo Girls
New York	WDBZ	6 6 5 41	Indigo Girls
LA	WFLA	23 27 1 19	Indigo Girls
Chicago	WLUP	28 25 28 196	Indigo Girls
San Fran.	WMLP	4 3 1 41	Indigo Girls
Houston	WPMX	43 46 41 406	Indigo Girls
Dallas	KLIC	43 46 41 406	Indigo Girls
Phoenix	WYXR	1 1 1 5	Indigo Girls
Detroit	WQOI	16 16 18 154	Indigo Girls
Wash., DC	KDMX	24 24 25 91	Indigo Girls
Houston	WRXO	29 28 30 253	Indigo Girls
Boston	WRXO	46 44 42 356	Indigo Girls
MIAMI	WPMX	41 42 38 261	Indigo Girls
Seattle	KBKS	27 23 26 256	Indigo Girls
San Diego	KFLZ	27 23 26 256	Indigo Girls
Min.	KSTP	2 2 2 6	Indigo Girls
St. Louis	KYKY	1 1 1 5	Indigo Girls
Balt.	WMMX	28 27 1 55	Indigo Girls
Phoen.	KZPP	1 1 1 4	Indigo Girls
Tampa	WAKS	3 2 1 3	Indigo Girls
Cleveland	WTKL	27 17 27 215	Indigo Girls
Port, OR	KBBT	20 20 40 539	Indigo Girls
MIAMI	WTKL	20 20 40 539	Indigo Girls
Sacram.	KZKO	39 34 37 204	Indigo Girls
Provi.	WSNE	8 8 8 29	Indigo Girls
Norfolk	WPTD	34 36 31 214	Indigo Girls
	WUDE	7 12 13 39	Indigo Girls

JEWEL		907/232	
Foolish Games (Atlantic)			
Total Stations: 49			
Chart Move: 21-18			
City	Station	IP	Jewel
New York	WDBZ	14 4 8 61	Jewel
LA	WFLA	25 23 1 48	Jewel
Chicago	WLUP	26 23 7 73	Jewel
San Fran.	WMLP	1 1 1 1	Jewel
Houston	WPMX	29 27 30 179	Jewel
Dallas	KLIC	44 42 31 155	Jewel
Phoenix	WYXR	1 1 1 5	Jewel
Detroit	WQOI	9 9 8 38	Jewel
Wash., DC	KDMX	29 20 10 105	Jewel
Houston	WRXO	27 24 8 59	Jewel
Boston	WRXO	46 44 42 356	Jewel
MIAMI	WPMX	58 55 57 418	Jewel
Seattle	KBKS	24 20 28 148	Jewel
San Diego	KFLZ	30 30 26 230	Jewel
Min.	KSTP	2 2 2 6	Jewel
St. Louis	KYKY	1 1 1 5	Jewel
Balt.	WMMX	44 44 14 120	Jewel
Phoen.	KZPP	30 24 4 58	Jewel
Tampa	WAKS	10 14 7 84	Jewel
Cleveland	WTKL	30 29 26 85	Jewel
Port, OR	KBBT	42 42 21 261	Jewel
MIAMI	WTKL	42 42 21 261	Jewel
Sacram.	KZKO	39 39 26 85	Jewel
Provi.	WSNE	8 8 8 29	Jewel
Norfolk	WPTD	34 36 31 214	Jewel
	WUDE	7 12 13 39	Jewel

MATCHBOX 20		693/145	
Push (Lava/Atlantic)			
Total Stations: 41			
Chart Move: 26-21			
City	Station	IP	Matchbox 20
New York	WDBZ	6 2 4 32	Matchbox 20
LA	WFLA	24 22 1 73	Matchbox 20
Chicago	WLUP	24 23 7 73	Matchbox 20
San Fran.	WMLP	1 1 1 1	Matchbox 20
Houston	WPMX	29 27 30 179	Matchbox 20
Dallas	KLIC	44 42 31 155	Matchbox 20
Phoenix	WYXR	1 1 1 5	Matchbox 20
Detroit	WQOI	32 28 27 118	Matchbox 20
Wash., DC	KDMX	29 20 10 105	Matchbox 20
Houston	WRXO	11 13 20 70	Matchbox 20
Boston	WRXO	46 44 42 356	Matchbox 20
MIAMI	WPMX	58 55 57 418	Matchbox 20
Seattle	KBKS	24 20 28 148	Matchbox 20
San Diego	KFLZ	30 30 26 230	Matchbox 20
Min.	KSTP	2 2 2 6	Matchbox 20
St. Louis	KYKY	1 1 1 5	Matchbox 20
Balt.	WMMX	73 47 47 279	Matchbox 20
Phoen.	KZPP	23 21 26 99	Matchbox 20
Tampa	WAKS	2 1 1 4	Matchbox 20
Cleveland	WTKL	30 29 26 85	Matchbox 20
Port, OR	KBBT	38 38 27 115	Matchbox 20
MIAMI	WTKL	38 38 27 115	Matchbox 20
Sacram.	KZKO	20 8 3 35	Matchbox 20
Provi.	WSNE	8 8 8 29	Matchbox 20
Norfolk	WPTD	34 36 31 214	Matchbox 20
	WUDE	20 18 22 67	Matchbox 20

MICHAEL BOLTON		984/18	
Go The Distance (Columbia)			
Total Stations: 50			
Chart Move: 1-1			
City	Station	IP	Michael Bolton
New York	WDBZ	13 11 1 4	Michael Bolton
LA	WFLA	8 7 8 40	Michael Bolton
Chicago	WLUP	14 19 18 197	Michael Bolton
San Fran.	WMLP	1 1 1 1	Michael Bolton
Houston	WPMX	28 24 23 188	Michael Bolton
Dallas	KLIC	44 42 31 155	Michael Bolton
Phoenix	WYXR	1 1 1 5	Michael Bolton
Detroit	WQOI	9 9 8 38	Michael Bolton
Wash., DC	KDMX	29 20 10 105	Michael Bolton
Houston	WRXO	11 13 20 70	Michael Bolton
Boston	WRXO	46 44 42 356	Michael Bolton
MIAMI	WPMX	58 55 57 418	Michael Bolton
Seattle	KBKS	24 20 28 148	Michael Bolton
San Diego	KFLZ	30 30 26 230	Michael Bolton
Min.	KSTP	2 2 2 6	Michael Bolton
St. Louis	KYKY	1 1 1 5	Michael Bolton
Balt.	WMMX	73 47 47 279	Michael Bolton
Phoen.	KZPP	23 21 26 99	Michael Bolton
Tampa	WAKS	2 1 1 4	Michael Bolton
Cleveland	WTKL	30 29 26 85	Michael Bolton
Port, OR	KBBT	38 38 27 115	Michael Bolton
MIAMI	WTKL	38 38 27 115	Michael Bolton
Sacram.	KZKO	20 8 3 35	Michael Bolton
Provi.	WSNE	8 8 8 29	Michael Bolton
Norfolk	WPTD	34 36 31 214	Michael Bolton
	WUDE	20 18 22 67	Michael Bolton

PAUL CARRACK		642/56	
For Once In Our Lives (Ark 21)			
Total Stations: 44			
Chart Move: 13-9			
City	Station	IP	Paul Carrack
New York	WDBZ	14 12 12 128	Paul Carrack
LA	WFLA	8 7 8 40	Paul Carrack
Chicago	WLUP	14 19 18 197	Paul Carrack
San Fran.	WMLP	1 1 1 1	Paul Carrack
Houston	WPMX	28 24 23 188	Paul Carrack
Dallas	KLIC	44 42 31 155	Paul Carrack
Phoenix	WYXR	1 1 1 5	Paul Carrack
Detroit	WQOI	9 9 8 38	Paul Carrack
Wash., DC	KDMX	29 20 10 105	Paul Carrack
Houston	WRXO	11 13 20 70	Paul Carrack
Boston	WRXO	46 44 42 356	Paul Carrack
MIAMI	WPMX	58 55 57 418	Paul Carrack
Seattle	KBKS	24 20 28 148	Paul Carrack
San Diego	KFLZ	30 30 26 230	Paul Carrack
Min.	KSTP	2 2 2 6	Paul Carrack
St. Louis	KYKY	1 1 1 5	Paul Carrack
Balt.	WMMX	73 47 47 279	Paul Carrack
Phoen.	KZPP	23 21 26 99	Paul Carrack
Tampa	WAKS	2 1 1 4	Paul Carrack
Cleveland	WTKL	30 29 26 85	Paul Carrack
Port, OR	KBBT	38 38 27 115	Paul Carrack
MIAMI	WTKL	38 38 27 115	Paul Carrack
Sacram.	KZKO	20 8 3 35	Paul Carrack
Provi.	WSNE	8 8 8 29	Paul Carrack
Norfolk	WPTD	34 36 31 214	Paul Carrack
	WUDE	20 18 22 67	Paul Carrack

SARAH MCLACHLAN		646/84	
Building A Mystery (Arista)			
Total Stations: 32			
Chart Move: 25-23			
City	Station	IP	Sarah McLachlan
New York	WDBZ	8 9 8 30	Sarah McLachlan
LA	WFLA	32 31 16 126	Sarah McLachlan

BDS IMPACT

AIRPOWER

Table with columns: Artist, Title, Total Plays/Gain, Station List. Includes Natalie Cole, LeAnn Rimes, Kenny Loggins, Backstreet Boys.

AIRPOWER BOUND

Table with columns: Artist, Title, Total Plays/Gain, Station List. Includes Backstreet Boys, Kenny Loggins, Sister Hazel, Spice Girls, Billy Joel, Sheryl Crow.

CHART BOUND

Table with columns: Artist, Title, Total Plays/Gain, Station List. Includes Swing Out Sister, Savage Garden, Dan Fogelberg.

MOST NEW AIRPLAY THIS WEEK

Table with columns: Artist, Title, No. Of Stations. Includes Billy Joel, Kenny Loggins, Backstreet Boys.

Table with columns: Artist, Title, Total Stations, Station List. Includes Jewel, Night Ranger, Amy Grant, R. Kelly.

Main chart table with columns: This Week, Last Week, Weeks On, Title/Label/Promotion, Artist, TW, LW. Includes GO THE DISTANCE, SUNNY CAME HOME, LITTLE MORE TIME WITH YOU.

Records showing an increase in detections over the previous week, regardless of chart movement. A record which has been on the chart for more than 20 weeks will not receive a bullet...

ADULT CONTEMPORARY POWER PLAYLISTS

Grid of 12 radio station playlists including 106.7 LITE FM, KOST, KBIG, 93.9 LITE FM, B101, KVIL, K101, SOFT ROCK 97.1, WDOK, SOFT ROCK 102.5, WLTE, WALK.



POWER PLAYLISTS

THE BUZZ

Table with 3 columns: Rank, Title/Artist, and Station (WDBZ New York). Lists top 30 songs.

STAR 98.7

Table with 3 columns: Rank, Title/Artist, and Station (KYSR Los Angeles). Lists top 30 songs.

MIX 101.9

Table with 3 columns: Rank, Title/Artist, and Station (WTMX Chicago). Lists top 30 songs.

THE LOOP

Table with 3 columns: Rank, Title/Artist, and Station (WLLP Chicago). Lists top 30 songs.

MIX 98.5

Table with 3 columns: Rank, Title/Artist, and Station (WBWX Boston). Lists top 30 songs.

THE PLANET

Table with 3 columns: Rank, Title/Artist, and Station (WPLT Detroit). Lists top 30 songs.

ALICE 97.3

Table with 3 columns: Rank, Title/Artist, and Station (KLLC San Francisco). Lists top 30 songs.

MIX 102.9

Table with 3 columns: Rank, Title/Artist, and Station (KDMX Dallas). Lists top 30 songs.

96.5 TIC

Table with 3 columns: Rank, Title/Artist, and Station (WTIC Hartford). Lists top 30 songs.

ALICE 104

Table with 3 columns: Rank, Title/Artist, and Station (WALC St. Louis). Lists top 30 songs.

THE PLANET

Table with 3 columns: Rank, Title/Artist, and Station (WPLL Miami). Lists top 30 songs.

KZZP

Table with 3 columns: Rank, Title/Artist, and Station (KZZP Phoenix). Lists top 30 songs.

Main chart table with columns: THIS WEEK, LAST WEEK, WEEKS ON CHART, TITLE/LABEL/PROMOTION LABEL, ARTIST, TW, LW, and DETECTIONS. Includes top 30 records.

Additional chart sections for STAR 100.7, THE LINK, and THE POINT, each with their own columns and top 30 records.



COMBINED TOP 40 AIRPLAY										AIRPLAY THIS WEEK BY FORMAT									
TW	LW	WKS	TITLE (LABEL/PROMOTION LABEL)	ARTIST	THIS WEEK		LAST WEEK		MAINSTREAM		RHYTHMIC TOP 40		ADULT TOP 40		AC		MODERN		
					Audience (millions)	Detections No. Rank	Audience (millions)	Detections No. Rank	Audience (millions)	Detections No. Rank	Audience (millions)	Detections No. Rank	Audience (millions)	Detections No. Rank	Audience (millions)	Detections No. Rank	Audience (millions)	Detections No. Rank	
1	1	18	SUNNY CAME HOME (COLUMBIA)	SHAWN COLVIN	63.7801	6868 2	65.5079	6851 2	27.3081	3211 7	0.0749	10 —	24.3467	2391 1	9.9083	982 2	2.1421	274 —	
2	2	13	SEMI-CHARMED LIFE (ELEKTRA/EEG)	THIRD EYE BLIND	57.9384	7368 1	55.8796	7169 1	25.4578	3425 4	0.0392	5 —	18.8095	1865 4	0.2222	36 —	13.4097	2037 4	
3	4	11	HOW BIZARRE (HUH!/MERCURY)	OMC	55.2932	5949 4	53.0378	5595 7	32.8203	3711 2	1.1100	151 —	17.6540	1580 8	0.2758	51 —	3.4331	456 —	
4	6	5	MEN IN BLACK (COLUMBIA)	WILL SMITH	53.1699	4692 12	46.2438	3976 17	26.7774	2794 11	26.1227	1833 1	0.2314	62 —	0.0111	1 —	0.0308	3 —	
5	11	9	QUIT PLAYING GAMES (WITH MY HEART) (JIVE)	BACKSTREET BOYS	50.1164	5066 9	44.6161	4542 13	27.5031	3375 5	14.2280	981 5	5.0283	481 29	3.3570	229 29	—	—	
6	3	25	ONE HEADLIGHT (INTERSCOPE)	THE WALLFLOWERS	50.0291	5505 7	53.3380	5865 5	20.6129	2439 13	0.1032	12 —	22.4052	2175 3	1.8459	196 —	5.0619	683 —	
7	7	14	BITCH (CAPITOL)	MEREDITH BROOKS	49.1683	6186 3	49.5471	6200 3	31.7049	4039 1	0.3096	85 —	11.7313	1127 14	0.0069	3 —	5.4209	933 23	
8	8	18	THE FRESHMEN (RCA)	THE VERVE PIPE	47.9270	5827 5	49.0797	5982 4	23.5495	3114 8	0.0502	6 —	17.8557	1718 7	0.2413	76 —	6.2303	913 24	
9	5	15	MMMBOP (MERCURY)	HANSON	46.0811	5106 8	52.6590	5705 6	23.9150	2835 10	4.0222	399 26	15.2052	1570 9	2.8910	276 25	0.0477	26 —	
10	14	10	ALL FOR YOU (UNIVERSAL)	SISTER HAZEL	46.0640	5675 6	42.8309	5472 8	19.0766	2884 9	0.0440	7 —	24.6624	2315 2	1.1264	177 —	1.1546	292 —	
11	13	27	BARELY BREATHING (ATLANTIC)	DUNCAN SHEIK	43.5202	4286 15	44.0038	4427 14	18.7801	1879 —	0.0419	8 —	19.8101	1842 6	3.0988	293 23	1.7893	264 —	
12	9	8	I'LL BE MISSING YOU (BAD BOY/ARISTA)	PUFF DADDY & FAITH EVANS (FEAT. 112)	42.7204	3821 18	38.6039	3510 22	19.1848	2107 18	23.4737	1705 2	0.0433	8 —	—	—	—	—	
13	10	32	YOU WERE MEANT FOR ME (ATLANTIC)	JEWEL	42.0660	4229 16	44.6742	4545 12	15.3311	1586 —	3.2037	186 —	14.7738	1472 11	7.5734	745 6	1.1840	240 —	
14	12	19	RETURN OF THE MACK (ATLANTIC)	MARK MORRISON	41.7421	4400 13	42.9686	4625 10	28.4037	3224 6	12.1905	960 6	0.9144	180 —	0.2335	36 —	—	—	
15	15	11	DO YOU KNOW (WHAT IT TAKES) (RCA)	ROBYN	40.2187	4725 11	40.0584	4598 11	29.8810	3610 3	8.1233	778 9	1.8384	270 —	0.3760	67 —	—	—	
16	16	14	HARD TO SAY I'M SORRY (LAFACE/ARISTA)	AZ YET FEAT. PETER CETERA	39.8308	3475 24	39.4561	3576 20	22.2979	2295 15	10.7234	487 —	1.5509	216 —	5.2586	477 16	—	—	
17	17	23	I WANT YOU (COLUMBIA)	SAVAGE GARDEN	35.8650	3934 17	38.3682	4306 15	17.6730	2119 17	3.1936	189 —	13.5883	1364 12	1.1508	190 —	0.2593	72 —	
18	20	25	FOR YOU I WILL (ROWDY/WARNER SUNSET/ATLANTIC)	MONICA	34.4294	3103 25	34.2490	3210 25	11.7717	1471 24	8.8791	412 —	3.1768	366 36	10.6018	854 4	—	—	
19	19	9	A CHANGE WOULD DO YOU GOOD (A&M)	SHERYL CROW	33.9909	4796 10	34.7719	4870 9	11.3425	2035 19	0.0350	5 —	18.4697	1861 5	0.4175	119 —	3.7262	776 31	
20	21	19	CRASH INTO ME (RCA)	DAVE MATTHEWS BAND	33.7414	3775 21	33.1798	3775 19	12.0146	1552 23	0.0313	5 —	16.1764	1531 10	0.2096	36 —	5.3095	651 —	
21	28	2	2 BECOME 1 (VIRGIN)	SPICE GIRLS	32.6441	3645 22	23.4444	2839 30	20.7771	2694 12	10.4200	717 12	0.9160	166 —	0.5267	67 —	—	—	
22	18	16	SAY YOU'LL BE THERE (VIRGIN)	SPICE GIRLS	31.6647	3587 23	35.0220	4024 16	19.5104	2395 14	6.1177	591 15	4.1009	459 31	1.9357	142 —	—	—	
23	25	5	PUSH (LAVA/ATLANTIC)	MATCHBOX 20	30.6851	4356 14	26.8709	3968 18	7.5595	1375 27	0.0148	5 —	6.9572	693 21	0.0119	4 —	16.1417	2279 2	
24	23	40	DON'T SPEAK (TRAUMA/INTERSCOPE)	NO DOUBT	28.0177	2944 27	28.4345	2941 28	10.5481	1182 —	1.8294	158 —	10.5305	1119 15	3.8337	280 —	1.2760	205 —	
25	22	22	WHERE HAVE ALL THE COWBOYS GONE? (IMAGO/WARNER BROS.)	PAULA COLE	26.0983	2920 28	28.8916	3214 24	9.8483	1251 30	0.0882	20 —	12.3690	1249 13	2.8278	218 —	0.9650	182 —	
26	32	6	IF YOU COULD ONLY SEE (POLYDOR/A&M)	TONIC	23.9748	3794 20	21.8875	3454 23	4.9949	1024 37	0.0266	7 —	6.1675	768 20	0.0008	1 —	12.7850	1994 6	
27	27	34	LOVEFOOL (TRAMPOLINE/STOCKHOLM/MERCURY)	THE CARDIGANS	23.5500	2409 35	24.4764	2538 31	10.3441	1198 —	3.9567	154 —	7.3058	794 19	0.8150	92 —	1.1284	171 —	
28	36	3	THE DIFFERENCE (INTERSCOPE)	THE WALLFLOWERS	23.2682	3820 19	20.9071	3522 21	5.7791	1123 33	—	—	6.2773	685 22	0.0074	2 —	11.2044	2009 5	
29	24	21	DON'T LEAVE ME (INTERSCOPE)	BLACKSTREET	21.5916	2050 40	22.9059	2142 37	10.2296	1231 31	11.2539	773 10	0.1081	46 —	—	—	—	—	
30	35	9	THE IMPRESSION THAT I GET (BIG RIG/MERCURY)	THE MIGHTY MIGHTY BOSSTONES	21.5761	2971 26	21.0835	3005 27	2.9357	621 —	—	—	3.2527	404 33	—	—	15.3877	1946 7	
31	29	19	YOUR WOMAN (BRILLIANT!/CHRYSALIS/EMI)	WHITE TOWN	21.3092	2850 29	23.4298	3167 26	15.4635	1884 20	0.2381	35 —	2.3616	375 35	0.0031	1 —	3.2429	555 —	
32	26	40	UN-BREAK MY HEART (LAFACE/ARISTA)	TONI BRAXTON	21.2533	1683 49	24.7326	1779 45	4.2989	580 —	5.6068	240 —	3.6168	390 —	7.7254	472 18	—	—	
33	NEW		WHERE'S THE LOVE (MERCURY)	HANSON	20.2917	2599 31	13.0412	1710 51	17.2593	2271 16	0.3551	59 —	2.6622	261 —	0.0151	8 —	—	—	
34	38	2	MORE THAN THIS (GEPHEN)	10,000 MANIACS	20.1977	2634 30	19.4435	2476 32	8.1995	1375 26	0.0191	5 —	10.8559	1050 17	0.4112	97 —	0.7120	107 —	
35	40	2	BUILDING A MYSTERY (ARISTA)	SARAH MCLACHLAN	19.9210	2331 36	18.6393	2062 39	1.8954	166 —	—	—	6.8445	646 23	—	—	11.1811	1519 13	
36	30	8	WHATEVER (EASTWEST/EEG)	EN VOGUE	19.7344	2546 33	22.3776	2856 29	10.5451	1578 22	8.8718	895 7	0.2669	63 —	0.0157	8 —	0.0349	2 —	
37	37	35	I BELIEVE I CAN FLY (WARNER SUNSET/ATLANTIC/JIVE)	R. KELLY	18.6009	1564 56	19.9899	1593 57	3.5295	427 —	2.3503	96 —	4.9258	544 26	7.7953	497 15	—	—	
38	NEW		FLY (LAVA/ATLANTIC)	SUGAR RAY	18.4405	2561 32	16.6872	2221 35	0.3601	65 —	—	—	0.5019	69 —	—	—	17.5785	2427 1	
39	31	27	EVERY TIME I CLOSE MY EYES (ARISTA)	BABYFACE	18.0274	1106 84	22.1938	1257 74	5.6264	445 —	7.3771	282 —	1.0939	128 —	3.9300	251 26	—	—	
40	39	41	DON'T LET GO (LOVE) (EASTWEST/EEG)	EN VOGUE	17.7584	1733 46	18.0320	1681 54	9.0023	1019 —	5.8525	371 —	2.8151	328 —	0.0885	15 —	—	—	

Records showing an increase in audience over the previous week, regardless of chart movement. Rankings by format (on right side of this page) correspond to 40-position charts printed in this week's Monitor (30 positions for adult contemporary); therefore rankings do not exist for records and records below No. 40 (No. 30 for adult contemporary). Audience computed by cross-referencing exact times of airplay with Arbitron listener data. ©1997, Billboard/BPI Communications.

WHERE WILL YOU BE OCTOBER 16TH? ★

UNIVERSAL STUDIOS, FLORIDA®

JOIN US FOR HALLOWEEN HORROR NIGHT AT UNIVERSAL STUDIOS TO KICK-OFF THE

WATCH MONITOR FOR DETAILS ★

**Billboard & Monitor AIRPLAY
Radio Seminar & Awards**

DON'T MISS OUT

October 16 - 18, 1997 • The Renaissance Orlando Resort

For more information call Maureen Ryan @212.536.5002

THIS WEEK	LAST WEEK	WKS. ON CHART	MAINSTREAM		
			TITLE/LABEL/PROMOTION LABEL	ARTIST	DETECTIONS TW LW
			★★★ No. 1 ★★★		
1	1	12	BITCH CAPITOL	3 weeks at No. 1 MEREDITH BROOKS	4039 3960
2	2	17	HOW BIZARRE HUH/MERCURY	OMC	3711 3567
3	3	12	DO YOU KNOW (WHAT IT TAKES) RCA	ROBYN	3610 3501
4	7	11	SEMI-CHARMED LIFE ELEKTRA/VEG	THIRD EYE BLIND	3425 3199
5	9	9	QUIT PLAYING GAMES (WITH MY HEART) JIVE	BACKSTREET BOYS	3375 3166
6	4	17	RETURN OF THE MACK ATLANTIC	MARK MORRISON	3224 3357
7	6	18	SUNNY CAME HOME COLUMBIA	SHAWN COLVIN	3211 3237
8	8	14	THE FRESHMEN RCA	THE VERVE PIPE	3114 3206
9	10	13	ALL FOR YOU UNIVERSAL	SISTER HAZEL	2884 2829
10	5	17	MMMBOP MERCURY	HANSON	2835 3324
11	15	6	MEN IN BLACK COLUMBIA	WILL SMITH	2794 2310
12	16	4	2 BECOME 1 VIRGIN	SPICE GIRLS	2694 2156
13	12	25	ONE HEADLIGHT INTERSCOPE	THE WALLFLOWERS	2439 2676
14	11	18	SAY YOU'LL BE THERE VIRGIN	SPICE GIRLS	2395 2686
15	14	16	HARD TO SAY I'M SORRY LAFACE/ARISTA	AZ YET FEATURING PETER CETERA	2295 2373
16	24	2	WHERE'S THE LOVE MERCURY	HANSON	2271 1589
17	13	24	I WANT YOU COLUMBIA	SAVAGE GARDEN	2119 2373
18	21	5	I'LL BE MISSING YOU BAD BOY/ARISTA	PUFF DADDY & FAITH EVANS (FEATURING 112)	2107 1812
19	18	9	A CHANGE WOULD DO YOU GOOD A&M	SHERYL CROW	2035 2059
20	17	19	YOUR WOMAN BRILLIANT/CHRYSALIS/EMI	WHITE TOWN	1884 2121
21	23	6	GOTHAM CITY JIVE	R. KELLY	1603 1629
22	20	9	WHATEVER EASTWEST/VEG	EN VOGUE	1578 1819
23	26	6	CRASH INTO ME RCA	DAVE MATTHEWS BAND	1552 1533
24	22	22	FOR YOU I WILL ROWDY/WARNER SUNSET/ATLANTIC	MONICA	1471 1658
25	28	7	TO THE MOON AND BACK COLUMBIA	SAVAGE GARDEN	1399 1420
26	29	5	MORE THAN THIS GEFLEN	10, 000 MANIACS	1375 1302
27	34	3	PUSH LAVA/ATLANTIC	MATCHBOX 20	1375 1078
28	25	9	GIMME SOME LOVE ETERNAL/WARNER BROS.	GINA G	1334 1562
29	35	3	COCO JAMBOO WARNER BROS.	MR. PRESIDENT	1254 1055
30	27	23	WHERE HAVE ALL THE COWBOYS GONE? IMAGO/WARNER BROS.	PAULA COLE	1251 1450
31	30	16	DON'T LEAVE ME INTERSCOPE	BLACKSTREET	1231 1265
32	31	6	RHYTHM OF LOVE CRAVE	DJ COMPANY	1191 1171
33	36	2	THE DIFFERENCE INTERSCOPE	THE WALLFLOWERS	1123 951
34	NEW		FOOLISH GAMES ATLANTIC	JEWEL	1103 563
35	32	7	HOW COME, HOW LONG EPIC	BABYFACE	1029 1153
36	39	2	INVISIBLE MAN MOTOWN	98 DEGREES	1028 872
37	NEW		IF YOU COULD ONLY SEE POLYDOR/A&M	TONIC	1024 785
38	33	13	I WANNA BE THERE EMI	BLESSID UNION OF SOULS	1002 1104
39	37	12	DA' DIP HARD HOOD/POWER/TRIAD	FREAKNASTY	860 969
40	NEW		WHEN I DIE ARISTA	NO MERCY	823 732

THIS WEEK	LAST WEEK	WKS. ON CHART	RHYTHMIC TOP 40		
			TITLE/LABEL/PROMOTION LABEL	ARTIST	DETECTIONS TW LW
			★★★ No. 1 ★★★		
1	2	7	MEN IN BLACK COLUMBIA	1 week at No. 1 WILL SMITH	1833 1623
2	1	10	I'LL BE MISSING YOU BAD BOY/ARISTA	PUFF DADDY & FAITH EVANS (FEATURING 112)	1705 1688
3	3	14	I BELONG TO YOU (EVERY TIME I SEE YOUR FACE) GRAND JURY/RCA	ROME	1322 1289
4	5	11	MO MONEY MO PROBLEMS BAD BOY/ARISTA	THE NOTORIOUS B.I.G. (FEAT. PUFF DADDY & MASE)	1004 887
5	10	9	QUIT PLAYING GAMES (WITH MY HEART) JIVE	BACKSTREET BOYS	981 877
6	4	26	RETURN OF THE MACK ATLANTIC	MARK MORRISON	960 1028
7	6	9	WHATEVER EASTWEST/VEG	EN VOGUE	895 963
8	8	10	G.H.E.T.O.U.T. BIG BEAT/ATLANTIC	CHANGING FACES	854 800
9	11	12	DO YOU KNOW (WHAT IT TAKES) RCA	ROBYN	778 820
10	9	25	DON'T LEAVE ME INTERSCOPE	BLACKSTREET	773 832
11	7	15	CUPID BAD BOY/ARISTA	112	767 888
			★★★ AIRPOWER ★★★		
12	24	2	2 BECOME 1 VIRGIN	SPICE GIRLS	717 505
			★★★ AIRPOWER ★★★		
13	18	4	INVISIBLE MAN MOTOWN	98 DEGREES	637 587
14	12	6	STOMP B-RITE/INTERSCOPE	GOD'S PROPERTY	621 652
15	13	16	SAY YOU'LL BE THERE VIRGIN	SPICE GIRLS	591 731
16	16	22	CAN WE JIVE	SWV	554 600
17	17	18	SWEET SEXY THING REPRISE	NU FLAVOR FEATURING ROGER	548 600
18	15	8	LOOK INTO MY EYES RUTHLESS/RELATIVITY	BONE THUGS-N-HARMONY	528 594
19	19	7	CAN'T LET GO Y&B Y&M/EPIC	LAURNEA	525 545
20	28	2	WHEN DOVES CRY 550 MUSIC	GINUWINE	522 386
21	39	2	LOVE YOU DOWN SO SO DEF/COLUMBIA	INOJ	506 309
22	14	21	HYPNOTIZE BAD BOY/ARISTA	THE NOTORIOUS B.I.G.	490 555
23	22	4	THE RAIN (SUPA DUPA FLY) EASTWEST/VEG	MISSY "MISDEMEANOR" ELLIOTT	430 421
24	27	7	SUMMERTIME SUMMERTIME SO SO DEF/COLUMBIA	CORINA	428 412
25	21	6	GOTHAM CITY JIVE	R. KELLY	408 523
26	26	11	MMMBOP MERCURY	HANSON	399 410
27	35	3	WHEN I DIE ARISTA	NO MERCY	389 358
28	23	22	GET IT TOGETHER BIV IQ/MOTOWN	702	383 489
29	29	4	NOT TONIGHT UNDEAS/ATLANTIC/TOMMY BOY	LIL' KIM FEAT. DA BRAT, LEFT EYE, MISSY ELLIOTT AND ANGIE MARTINEZ	369 301
30	34	6	TIDE IS HIGH UPSTAIRS	ANGELINA	359 368
31	25	9	HOW COME, HOW LONG EPIC	BABYFACE	357 414
32	32	8	SERENADE MOTOWN	SHADES	345 371
33	NEW		C U WHEN U GET THERE TOMMY BOY	COOLIO FEATURING 40 THEVZ	335 264
34	38	3	YOU BRING ME UP MCA	K-CI & JOJO	329 321
35	37	9	NO ONE BUT YOU H.O.L.A./ISLAND	VERONICA (FEATURING CRAIG MACK)	326 354
36	36	8	LOVE II LOVE BIG LIFE/CRITIQUE	DAMAGE	287 354
37	30	13	COME ON EASTWEST/VEG	BILLY LAWRENCE FEATURING MC LYTE	279 372
38	NEW		(FREAK) AND U KNOW IT MECCA DON/EASTWEST/VEG	ADINA HOWARD	272 244
39	RE-ENTRY		CAN U FEEL IT DVB/A&M	3RD PARTY	264 295
40	NEW		BIG BAD MAMMA DEF JAM/MERCURY	FOXY BROWN FEATURING DRU HILL	263 182

Records showing an increase in detections over the previous week, regardless of chart movement. A record which has been on either chart for more than 20 weeks will not receive a bullet, even if it registers an increase in detections. Airpower awarded to those records which attain 1500 detections (mainstream) or 600 detections (rhythm) for the first time. If two records are tied in number of plays, the record being played on more stations is placed first. Records below the top 20 are removed from the chart after 26 weeks.

★ The New Song And Video
★ Over 1.7 Million Albums Sold In The U.S.

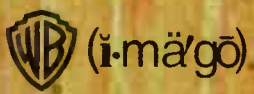
sublime

WRONG WAY

SoundScan Sales This Week: 52,643

Produced by Paul Leary • Management: Jon Phillips & Jason Westfall

Get AMPed: www.mcarecords.com



MOST ADDED 4TH WEEK IN A ROW

INCLUDING:

**KALC WWDE
WSHE KMXB
 WKDD**

**(37) - (25) Top 40 Adult Monitor
563 Spins (+191)
#2 Most New Airplay
#2 Greatest Gainer**

More than 1,300 total BDS detections this week with an audience reach of 10.5 million!

Over 750,000 Albums Sold!

YOU SHOULDN'T HAVE TO WAIT EITHER.

You want to play this new single from her GOLD (headed-to-Platinum) album, This Fire - but you're still playing the Top 5 multi-format smash, "Where Have All The Cowboys Gone?" (nearly 100,000 BDS detections). Nobody should have to wait for the next great thing. So, play both songs and make everybody happy. And look for Paula on the Lilith Fair tour.

WDBZ	22x
WWMX	27x
KBBT	30x
WPLL	28x
WTMX	27x
WALC	38x
WQAL	31x
KFMG	25x
WPTE	23x
WMXB	23x
WLNK	22x
KURB	25x
WSHE	21x
KBKS	29x
STAR 94	27x
Q102	28x
WXKS	21x
PRO-FM	16x
Z100	16x
KQKQ	23x
B94	17x



"I Don't Want To Wait"

Paula Cole

Produced by Paula Cole. Management: Capitol Records. © 1994 Warner Bros. Records Inc. All Rights Reserved.

World Radio History

World Premiere Broadcast
Via Satellite

Tuesday, July 29, 8 pm ET
Satcom C5; Transponder 19;
Dats Channels 10 & 11

Impacting Monday, August 4
& Tuesday, August 5

Sugar never ever
was so sweet

MARIAH CAREY

Honey

The new single from her forthcoming album

BUTTERFLY

In stores Tuesday, September 16

Produced by Sean "Puffy" Combs for Bad Boy Entertainment Inc., The Ummah, Stevie J., Mariah Carey

HOFFMAN COLUMBIA