

Deaton Upped To KRTY GM

As reported in yesterday's **R&R Country Daily**, KLIV & KRTY/San Jose Marketing Director and KRTY Asst. PD **Nate Deaton** has been elevated to KRTY GM. Empire Broadcasting President Bob Kieve has served as the combo's GM since purchasing the stations in 1992. Deaton joined KRTY a decade ago and was named Empire Broadcasting Marketing Director and KRTY Asst. PD in June 2000. Prior to joining KLIV & KRTY Deaton was Director/Marketing & Entertainment for the Santa Clara County Fair. From 1984-86 he was Promotions Director at KSJO/San Jose.

Scripps Buys GAC From Jones

As reported in an **R&R Breaking News Update** issued last Wednesday morning (Oct. 13), Jones Media Networks has sold its Great American Country cable network to the E.W. Scripps Company for \$140 million in cash. Explaining what the sale means to GAC staffers, GAC President **Jeff Wayne** told **R&R**, "I will remain as President and my entire management team will stay in place. For the foreseeable future we will be staying in Denver, which is great because we will continue our close working relationship with Jones Radio Networks. We have worked out a bunch of arrangements that will keep those working relationships in place

"We're really excited about having a new owner that has terrific resources — Scripps is involved in five other cable networks, 10 TV stations and 21 newspapers. That makes us much stronger in the market place.

"This is a huge opportunity. The Scripps Network is based in Knoxville; they love country music. They love our network. They were fans of the network and that's why they were interested in purchasing it.

R&R Country Daily: Don't Wait

Sign up now for **R&R Country Daily**, a completely free daily roundup of important news, as well as a glimpse of **R&R's** industry-leading chart info. To get it sent directly to your e-mail inbox blast your name, company/calls, title, address, phone and fax to moreinfo@radioandrecords.com. We'll do the rest.

Their view is that we have a good thing going. They'll pump some more resources into it and [make] this be a fully distributed network."

Montgomery Morph

Major changes at four-month-old Country outlet WBAM/Montgomery, AL, where former WDJR/Dothan, AL PD **David Sommers** is in as PD and host of the morning show. He's brought former WDJR afternoon driver "**Big Stew**" Sawyers to 'BAM as Asst. PD/MD/afternoon driver. Sommers is also looking for mid-day and evening talents. T&Rs to 4101A Wall St., Montgomery, AL 36106. The station's phone number is 334-244-0961; the fax is 334-279-9563.

Breaking Down Bakersfield

As reported in yesterday's **R&R Country Daily**, KBKO/Bakersfield PD **Kenn McCloud** has relinquished his PD duties to take a morning co-host slot with LaRae Nelson. "It's the most difficult decision I've ever seen anybody make," says OM **Steve King**. "When we launched [in September] the intention was to have the morning hosts focus on mornings, with the PD focusing on programming. He just decided he really wanted to do the morning thing." Which leaves King with an open PD/air talent slot. Send your kit to 1100 Mohawk, Suite 280, Bakersfield, 93309 or steveking@clearchannel.com.

If you experienced transmission problems ... please call our Circulation Department at 310/788-1625.

© 2004 Radio & Records, Inc. All Rights Reserved No part of this material may be reproduced in any form or incorporated in any information retrieval system without written permission of the Publisher.

CONGRATULATIONS GEORGE!

"I HATE EVERYTHING" is #1

50 NUMBER ONES IS #1 ON TOP CURRENT BILLBOARD ALBUMS CHART!!

LEE ANN WOMACK

"I MAY HATE MYSELF IN THE MORNING"

#1 MOST ADDED!!!



The Commitment Continues

More CMA Performances

George Strait, Martina McBride and Horizon nominees Dierks Bentley, Big & Rich, Julie Roberts and Josh Turner have been added to the performance lineup for the 38th annual CMA Awards, airing Nov. 9 on CBS.

ASCAP Inks \$1.7B Radio Deal

The agreement, approved by a judge on Friday, finalizes ASCAP fees for 2001-2003 for the Radio Music License Committee's more than 12,000 member radio stations and sets new licenses for 2004-2009. Though neither ASCAP nor the RMLC has released detailed numbers, the new fees are based on a set payment schedule and are not derived from radio-station revenue. The deal also gives stations the right to stream ASCAP repertoire over the Internet as part of their over-the-air licenses rather than paying a second set of fees. The RMLC signed a deal with BMI last year that set flat licensing fees for 2003-2006, and the agreement included a separate fee for web simulcasts. SESAC content, meanwhile, must be licensed separately for Internet use. Friday's ASCAP agreement is not related to webcast performance royalties, which are paid to music copyright owners for online performances of their work.

Radio News

Personalities: As first Street Talked in the **R&R Country Daily** last Friday (Oct. 15), Premiere Radio Networks will indeed cease syndication of the *Ben & Brian Show* at the end of the year. The duo will concentrate on their local WMZQ/Washington morning show.

KXKC/Lafayette, LA morning personality **Scott Daniels** has re-upped with the Citadel Country outlet for another two years. He has co-hosted wakeups with KXKC PD **Renee Revett** since the station debuted in 1992.

KMFX/Rochester, MN morning co-host **Alan Reed** is leaving after five years as he exits the business. His

last day is Oct. 29. PD **Dave Anderson** is looking for someone to team with **Tracy Dixon**. He says, "Rochester is the home of the Mayo Clinic and IBM and was voted 'Best Place to Live' three years in a row. The new morning co-host must have an eye on the community and be highly organized and motivated; quality production skills a must. Remotes and public appearances included. No calls."

Send your T&Rs Dave at KMFX-FM, 1530 Greenview Drive SW, Suite 200, Rochester, MN 55902 by Nov. 5.

Promotions: Clear Channel/Poughkeepsie, NY Promotions Director **Aaron McCord** is transferring to Hartford, where he will be Promotions Director for the company's WWYZ. He succeeds **Annie Sandor** who transitioned to Clear Channel sister-station WPOC/Baltimore six weeks ago.

Syndication: **Brooks & Dunn**, hosts of the Nov. 9 CMA Awards show on CBS-TV, will also host MJI/Premiere's *CMA Awards Preview Special*, a three-hour radio special airing Nov. 5-9. Also, **Phil Vassar** has signed on as the celebrity correspondent for MJI's first-ever live pre-CMA show, *Red Carpet Audio Feed*. For more info, contact MJI/Premiere at 818-377-5300.

Kudos: Heartiest congratulations to KFKF/Kansas City's **Tony Stevens**, who will celebrate 20 years as the station's MD on Nov. 1. PD **Dale Carter** is inviting the hundreds of artists Stevens has added over those years to call in that day between 9am-1pm CT. To set it up, contact his 11am-1pm on-air partner, **Rusty Walker**, at rustyw@kfkf.com.

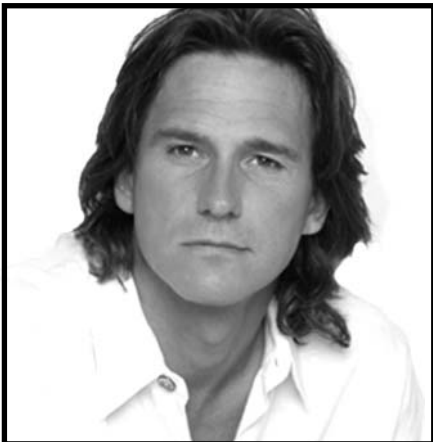
Record News

Promotion veteran **Anne Sarosdy** has joined Moraine Records as Dir./Promotion. Her background includes stints at Liberty, Patriot, Magnatone, Curb/Universal and, for the last four years, Koch.

Broken Bow Records has hired Belmont graduate **Jenifer Snyder** as Publicity Assistant. Reach her at 615-244-8600 or jenifer@brokenbowrecords.com.

If you experienced transmission problems ... please call our Circulation Department at 310/788-1625.

© 2004 Radio & Records, Inc. All Rights Reserved No part of this material may be reproduced in any form or incorporated in any information retrieval system without written permission of the Publisher.



Lighting It Up!

Let Them Be Little Billy Dean

Increased 14 Chart Positions in 4 Weeks at R&R

Increased 12 Chart Positions in 4 Weeks at BB

Just Added

**WFMS KNCI WKKT KUZS KSSN
WGNA KFDI WCTQ WKCK**

BREAKER BABY!

RR **36** - **31** +171

BB **35** - **31** +242

CURB
RECORDS
www.curb.com

Street Talk

In last Friday's **R&R Country Daily** we asked the musical question, "What PD is about to make the Leap o' the Year, moving up 160 market sizes? We should be able to dish all the dirt Monday — but let's just say we hope he loves Mexican food." Well, we couldn't tell you yesterday — and we still can't today. But hopefully we'll be able to share the news *very* soon. Be sure to sign up for **RRCD** (details on Page 1)!

Industry News

The International Entertainment Buyer's Association named the 2004 CMA Music Festival its Fair, Festival or Special Event of the Year during its annual conference in Nashville last week. The award honors a well-attended, artist-focused event that displays professional organization, management and production.

Congrats to **Barry** and **Jewel Coburn**, whose Ten Ten Music Group recently celebrated 20 years in the music business.

SOLID Session

The Society of Leaders in Development (SOLID) is hosting "Out of the Box," an educational forum featuring Nashville radio and record industry leaders who have created new business models to compete in these ever-changing industries. The event is Tuesday, Oct. 21 at 6:30pm at the Belcourt Theatre. Panelists include Oglesby Writer Management's **Chris Oglesby**, Equity Music Group's **Mike Kraski**, Hi Fusion's **Todd Cassetty**, College Music Radio's **Michael Knox**, IP Services' **Dennis Lord** and WSM-FM/Nashville PD **John Sebastian**. **Craig Havighurst** moderates. The event is free.

Charitably Speaking

How far do 5,000 bras stretch? Only the fertile minds of WSIX/Nashville PM drivers **Big D & Bubba** could conjure such a notion as part of their effort to raise awareness of breast cancer. Entitled Bras Across the Cumberland, their project had a goal of collecting enough listener-donated bras to string across the

This Week In R&R

Remote broadcasts featuring tons of Country artists have become a tradition during the week surrounding the CMA Awards show. In this week's Country column, two producers offer tips, as well as the do's and don'ts of successful broadcasts. Don't leave for Nashville without it.

This year's CMA Awards fall a week later than usual to accommodate the election, and the event has been moved up a day to Tuesday. The Nashville column looks at the reasons for this shift and what it means for the music community.

Cumberland River. They also collected over \$7,200 for the Susan G. Komen Foundation. By the way, the undergarments stretched far enough to string across Music City's Shelby Street Pedestrian bridge *four* times — that's 12,000 feet. Bubba adds that hooking all those bras together was more fun than thumbing through the latest Victoria's Secret catalog. Check it out at www.wsix.com/braspics.html.

Congratulations to KMDL/Lafayette, LA for raising \$103,236 during its St. Jude Country Cares radiothon — about \$18,000 more than last year.

KIXZ/Spokane, WA held its first Children's Miracle Network radiothon last week, raising \$106,899.

The Week In Review

Here are a few of the major stories first appearing in **R&R Country Daily**, an email highlighting the day's news and events. To get **RRCD** free, send your name, company or call letters, job title, address, phone and fax numbers and your email address to moreinfo@radioandrecords.com.

For more on these stories and all the news of the day, visit the Country Format Room at www.radioandrecords.com.

R&R Country Daily, Oct. 12: Longtime Seattle radio personality **Phil Harper** passed away Oct. 11. He was 64. Up until his death, Harper was doing afternoons at Infinity Classic Country KYCW-AM. He did eight years of mornings for KMPS, beginning in the mid-'70s.

If you experienced transmission problems ... please call our Circulation Department at 310/788-1625.

© 2004 Radio & Records, Inc. All Rights Reserved No part of this material may be reproduced in any form or incorporated in any information retrieval system without written permission of the Publisher.



the Epic revolution CONTINUES...

GRETCHEN WILSON

"When I Think About Cheatin"

Delivered last Wednesday, on the chart TODAY!

R&R Debut at **47** +92 spins.

Billboard Hot Shot Debut ***49** +154 spins

22 Early Adds including KZLA, WFMS, KUPL, WKDF, KFRG, WSM, KMLE, WKIS, KFKF, WMIL, KUZZ, WGH, WWQM, KIIM, WIRK, WWQM, KHEY and many more!

Official impact date: Monday, 10/25.



R&R Country Daily, Oct. 13: Tom Kelly was named PD/morning personality at WXCL-FM/Peoria, IL. He succeeds **B.J. Stone**, who continues in afternoon drive. **Dan Dermody** segued from mornings to middays. Contact Kelly at tkelly@aaapeoria.com.

Capitol/Nashville tapped **Judy McDonough** as Dir./Media & Public Relations. Most recently she served in a similar capacity at Compendia Music Group.

R&R Country Daily, Oct. 14: Encore Broadcasting tapped **Boomer Kingston** as OM of its five-station San Angelo, TX cluster, including Country KGKL-FM, for which he will serve as PD and do afternoons. He can be reached at boomer.kingston@encorebroadcasting.net.

WCAT/Harrisburg, PA Asst. PD/MD/PM driver **Sam McGuire** was named PD of WYNK/Baton Rouge; he starts his new gig Oct. 28.

RCA/Nashville Promotion Coordinator **Darcy Miller** is leaving to join Outback Concerts. She can be contacted at 615-242-3323 or darcy@outbackconcerts.com. Succeeding her at RCA/Nashville is **Melissa Grayson** from Clear Channel Entertainment. She can be reached at 615-301-4352 or melissa.grayson@bmg.com.

Clear Channel's KFIN/Jonesboro, AR named **Roger Price** PD. He had been Asst. PD at WDDD/Marion, IL.

The International Entertainment Buyers Association (IEBA) presented the Country Music Association with its Festival of the Year honor for the CMA Music Festival.

R&R Country Daily, Oct. 15: Former Triad/Bluefield, WV OM **Bill Brock** was named OM for Clear Channel/Meridian, MS's five-station cluster, including Classic Country WYYW.

Herb McCord and **Norm Feuer** bought KTPK/Topeka, KS from Kansas Capital for \$5.7 million.

— **Lon Helton/Country Editor** (615) 244-8822
Email: lhelton@radioandrecords.com

— **Chuck Aly/R&R Asst. Country Editor** (615) 244-8822
Email: caly@radioandrecords.com

If you experienced transmission problems ... please call our Circulation Department at 310/788-1625.

© 2004 Radio & Records, Inc. All Rights Reserved No part of this material may be reproduced in any form or incorporated in any information retrieval system without written permission of the Publisher.

CD GALLERY



John Anderson *Ultimate Hits* (Koch)

Contains 14 new, digitally recorded versions of Anderson's best known hits, including "Swingin'," "I'm Just an Old Chunk of Coal," "Straight Tequila Night" and "Wild and Blue."



Brooks & Dunn *Greatest Hits II* (Arista)

Seven years of B&D encompassing 14 familiar hits and three new tunes, including this week's top five debut "That's What It's All About." Media bumps surrounding the release include Sessions@AOL (Oct. 22) and hosting and performing at the CMA Awards (Nov. 9).



Pat Green *Lucky Ones* (Republic/Universal/Mercury)

Green's third major-label disc features the single "Don't Break My Heart Again," a Rob Thomas (Matchbox Twenty) co-write on "Baby Doll" and a Brad Paisley collaboration called "College."



Various *Christmas Grass Vol. 2* (Koch)

Collection follows successful Vol. 1, which features holiday standards as interpreted by top bluegrass or acoustic music artists, including Dolly Parton, Rhonda Vincent, Sonya Isaacs and Charlie Daniels. Thirteen cuts include "Silent Night" and "Mary Did You Know?"

Everybody's Talking about Miranda Lambert

"Me And Charlie Talking"

The debut Epic SMASH from

miranda
lambert

R&R: 40 - 35

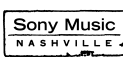
Billboard: *42 - *40

12 new stations including

WMIL, WQYK, KYGO, WKKT, WYRK, WWGR,
WYNK, WCTO, WCTK, WOKO, KXKC and KFTX

50% of the combined panel in just 3 weeks
and one of the fastest moving debut singles this year!

Add "Me And Charlie Talking" today!





Various Kids' Country Hits 2 (Capitol/Nashville)

The collection features recent hits sung by kids, for kids, including performances from some who are battling serious illnesses. Tracks include versions of Sara Evans' "Born to Fly," Rascal Flatts' "Mayberry" and Shania Twain's "You're Still The One."

MUSICNOTES

↳ **Keith Urban** and friends will perform at Max It Out for Meningitis at Rocketown in Nashville on Jan. 22. The event, which includes dinner, an open bar and a live auction, features a chance to win Urban's \$78,000 357 Customs Chopper motorcycle. Proceeds benefit the Edwards Pediatric Meningitis Research Fund via Vanderbilt Children's Hospital. Visit www.maxitout.org for details.

↳ **Reba McEntire** and Brian Stokes Mitchell will lead the cast of a concert version of Rodgers & Hammerstein's *South Pacific* at Carnegie Hall in New York City on June 9, 2005. The gala benefit portion of the event will include a cocktail reception and dinner at Remi Restaurant and Atrium. Additional casting and ticket sale dates will be announced at a later date.

↳ **Gretchen Wilson's** pants fetched \$7,700 at a recent auction benefiting meningitis research. An identical pair is now up for auction to benefit United Cerebral Palsy of Middle Tennessee. Visit Wilson's website for access.

↳ **Kenny Chesney's** stomach is featured in an upcoming coffee table book titled *Precious*. The tome offers photographs of the body parts celebrities hold most dear, taken by photographer Melanie Dunnea. Explaining his choice, Chesney says, "In talking to Melanie, I realized how important my inner core and the strength that comes from there is to me, to what I

Dates & Deadlines

Oct. 21: SOLID Out of the Box, Belcourt Theatre, 6:30pm/CT.

Oct. 25: Radio Music Awards, NBC, 9pm/ET.

Nov. 8: Fourth annual CRB Fall Forum, Nashville's Renaissance Hotel, 1pm to 3pm. More info at www.crb.org or 615-327-4487.

Nov. 9: 38th annual CMA Awards, CBS, 8pm/ET.

Nov. 19: Early-bird registration (\$450) for CRS-36 ends. More info at www.crb.org or 615-327-4487.

Mar. 2-4, 2005: CRS-36. More info at www.crb.org or 615-327-4487.

do, even to how I feel." Proceeds go to the Starlight Foundation, which works to improve the lives of seriously ill children and their families.

↳ **Diamond Rio** received the Grand Ole Opry's Minnie Pearl Humanitarian Award during their Oct. 15 Opry performance. Fellow Opry member Steve Wariner presented the honor. In other news, the group's golf tournament, part of their second annual Arby's Charity Tour Nashville, was interrupted by severe weather yesterday. Everyone played a hole before being called into the clubhouse, where a winner was chosen by way of a trivia contest. NASCAR driver Tony Stewart's team placed second. The tournament and previous evening's dinner and auction raised \$155,000 for Big Brothers Big Sisters of Middle Tennessee and the Arby's Foundation.

↳ **Hometown News** will perform the national anthem and "God Bless America" for game six of the NLCS between the Cardinals and Astros on Wednesday. The game will be broadcast on Fox. The duo's Ron Kingery and Scott Whitehead are huge Cards fans.

↳ Following the recent video shoot for his "Paper Angels," **Jimmy Wayne** got to meet Col. Charles

If you experienced transmission problems ... please call our Circulation Department at 310/788-1625.

© 2004 Radio & Records, Inc. All Rights Reserved No part of this material may be reproduced in any form or incorporated in any information retrieval system without written permission of the Publisher.

SHELLY FAIRCHILD

"you don't lie here anymore"

The debut Columbia HIT!

Double Digit adds for the 4th week in a row!

R&R **44** Billboard 42*

New airplay this week at:

WMIL KNCI WSSL KUPL
WYUU KRTY WCTK KVOO
KRYS KUAD and More!

Sony Music
NASHVILLE



Travis Tritt with John Mellencamp

"What Say You"

12 new stations including:
KAJA WROO WSOC WNOE WDXB WCOL
KTEX WRNS KHEY WWGR WZZK WOGK

90% of the panel spinning it hard!

R&R: +104 spins

BB: +186 spins

White, founder of the Salvation Army's Angel Tree program. Wayne was able to thank White for creating something from which he personally benefited. Look for a collaboration between Wayne and the organization's Angel Tree program soon.

↪ It's High Times & Hangovers for **Dierks Bentley** and **Cross Canadian Ragweed** as they co-headline a tour under that moniker kicking off Oct. 27 in Columbus, OH. The trek will hit 24 cities through December.

↪ **Craig Morgan's** donated guitar brought \$10,000 at auction during the 2004 Celebrity Hunt for a Cure in Joes, CO. Craig performed at the event, which raised more than \$65,000 for children with Sturge-Weber Syndrome and other neurological diseases.

↪ **Tim McGraw** is featured in the November issue of *Reader's Digest* discussing his childhood, his relationship with his father Tug and more.

↪ The **Big & Rich** video for "Holy Water," filmed in Los Angeles last week, features Big Kenny's sister Charlene as herself.

↪ **James Otto** is opening the Big & Rich- and Gretchen Wilson-headlined American Revolution Tour, which kicks off Nov. 5.

— **Chuck Aly/R&R Asst. Country Editor** (615) 244-8822
Email: caly@radioandrecords.com

VIDEO ADDS

CMT

HANK WILLIAMS, Jr. w/ Gretchen Wilson Outlaw Women

MIRANDA LAMBERT Me And Charlie Talking

SUGARLAND Baby Girl

GREAT AMERICAN COUNTRY

MIRANDA LAMBERT Me And Charlie Talking

SUGARLAND Baby Girl

RANDOM FAX®

Tuesday, 10/19

BIRTHDAYS: Rodney Carrington, Jeannie C. Riley, Mike Brophey, Susanne Mumpower-Johnson

On TV: CMT: **Kenny Chesney, John Mellencamp**, *CMT Crossroads*. GAC: **Hal Ketchum** (host), **Andy Griggs, Alison Krauss** and more, *Grand Ole Opry Live*; **Joe Diffie**, *CRL**; **Brad Cotter**, *Celebrity Kitchen**.

Wednesday, 10/20

BIRTHDAYS: the late **Grandpa Jones, Wanda Jackson, Maude Gilman-Chapman, J.R. Jackson, Scott Stem**

On TV: CMT: **John Mellencamp**, *CMT Inside Fame*; **Gretchen Wilson**, *In The Moment*. GAC: **Bobby Bare**, *GAC Classic**; **Crystal Gale**, *Celebrity Kitchen**.

Thursday, 10/21

BIRTHDAYS: the late **Owen Bradley**

On TV: CMT: **Brooks & Dunn**, *CMT Inside Fame, Star Pads*. GAC: **Crystal Gale**, *Celebrity Kitchen**.

Friday, 10/22

BIRTHDAYS: **Rich Bowers, Chris DeCarlo, John Ettinger, Judy Turner**

On TV: GAC: **Chely Wright**, *CRL**; **Trent Willmon**, *Straight Up**; **Billy Currington**, *Celebrity Kitchen**; **Craig Morgan**, *HCN Conman**. NBC: **Kenny Chesney**, *Genius: A Night For Ray Charles**.

Saturday, 10/23

BIRTHDAYS: **Jimmy Wayne, Dwight Yoakam, Bart Allmand, Jeff Walker**

On TV: CMT: **Gretchen Wilson**, *In The Moment*. GAC: **Chely Wright, Joe Diffie, Mark Chesnutt** and more, *Grand Ole Opry Live**; **Craig Morgan**, *HCN Conman*. NBC: **Brad Paisley**, *NBC Weekend Today**.

Sunday, 10/24

BIRTHDAYS: **George Achaves, Dave Miggo**

On TV: CMT: **Dolly Parton, Faith Hill, Garth Brooks** and more, *Lost Highway: The History Of American Country*.

Monday, 10/25

BIRTHDAYS: **Chely Wright, Mark Miller, Enzo DeVincenzo, Jennifer Thorpe**

On TV: CMT: **Waylon Jennings**, *CMT Inside Fame*. GAC: **Jimmy Wayne**, *CRL**. NBC: **Big & Rich**, *Radio Music Awards**.

*premiere airing

If you experienced transmission problems ... please call our Circulation Department at 310/788-1625.

© 2004 Radio & Records, Inc. All Rights Reserved No part of this material may be reproduced in any form or incorporated in any information retrieval system without written permission of the Publisher.

CRAIG MORGAN



"That's What I Love About Sunday"

"I never thought you could beat 'Almost Home,' Craig just did!" - **Kerry Wolfe/ WMIL - Milwaukee**

"When it comes to painting a picture about real life in a song, nobody gets it done better than Craig. 'Sunday' will hit listeners right where they live" - **Cary Rolfe/ KUPL - Portland**

"'Almost Home' was a HUGE song for us here. 'Sunday' will leave it in the dust!!" - **JD Cannon/ WFMS - Indianapolis**



ADD DATE: 11-1

LW	TW	ARTIST Title Label(s)	Total Points	+/- Points	Total Plays	+/- Plays	Tot. Aud. (00)	+/- Aud. (00)	Wks On	Total Station
2	1	GEORGE STRAIT I Hate Everything (MCA)	12186	62	4453	+24	398939	-1654	16	112/0
1	2	SARA EVANS Suds In The Bucket (RCA)	11554	-1039	4154	-396	398938	-25065	26	113/0
5	3	PHIL VASSAR In A Real Love (Arista)	10270	703	3709	+319	353887	32503	25	112/0
6	4	TOBY KEITH Stays In Mexico (DreamWorks)	9687	152	3451	+34	316770	-1207	12	113/0
7	5	BROOKS & DUNN That's What It's All About (Arista)	9486	696	3451	+258	314478	13090	17	113/0
9	6	LONESTAR Mr. Mom (BNA)	9454	1103	3353	+415	337938	55239	15	111/1
10	7	GARY ALLAN Nothing On But The Radio (MCA)	8987	858	3207	+258	309512	36014	19	112/1
8	8	RASCAL FLATTS Feels Like Today (Lyric Street)	8034	-540	2715	-295	279931	-11824	19	113/0
12	9	KENNY CHESNEY The Woman With You (BNA)	7832	818	2816	+292	270242	35103	8	113/0
11	10	JOE NICHOLS If Nobody Believed In You (Universal South)	7796	605	3000	+200	262751	21525	30	112/0
17	11	TIM MCGRAW Back When (Curb)	6899	1324	2413	+512	230690	39339	8	107/3
14	12	DIERKS BENTLEY How Am I Doin' (Capitol)	6698	339	2562	+142	219815	18793	23	110/1
16	13	BLAKE SHELTON Some Beach (Warner Bros.)	6507	565	2245	+165	215565	33869	12	110/1
15	14	TRACE ADKINS Rough & Ready (Capitol)	6288	-48	2310	+12	203886	658	26	107/0
19	15	SHANIA TWAIN w/ BILLY CURRINGTON Party For Two (Mercury)	5477	606	2020	+253	165125	16420	7	104/3
18	16	DARRYL WORLEY Awful, Beautiful Life (DreamWorks)	5241	350	1839	+146	162032	14474	16	107/6
20	17	SHEDAISY Come Home Soon (Lyric Street)	4932	204	1795	+76	156802	9741	16	105/3
23	18	LEANN RIMES Nothin' 'Bout Love Makes Sense (Asylum/Curb)	4448	970	1586	+306	136993	22772	8	104/3
24	19	MONTGOMERY GENTRY You Do Your Thing (Columbia)	3842	373	1493	+142	112042	15523	14	101/0
21	20	JIMMY BUFFETT f/MARTINA MCBRIDE Trip ... (RCA/Mailboat)	3760	65	1246	+74	114425	3557	9	92/2
25	21	REBA MCENTIRE He Gets That From Me (MCA)	3480	376	1264	+125	110882	16439	9	101/9
28	22	BRAD PAISLEY Mud On The Tires (Arista)	2876	641	1054	+252	98109	29916	6	94/12
29	23	BIG & RICH Holy Water (Warner Bros.)	2801	695	1005	+268	94512	26018	4	87/8
27	24	TRAVIS TRITT f/JOHN MELLENCAMP What Say You (Columbia)	2656	266	945	+104	82840	6883	8	93/12
34	25	JOSH GRACIN Nothin' To Lose (Lyric Street)	2407	565	905	+205	69848	18519	7	84/10

© 2004 Radio & Records, Inc.

PHIL VASSAR

"IN A REAL LOVE"

3 R&R +319
*3 Billboard
+353 #4 Gainer!

This is a real hit headed to the TOP!

BROOKS & DUNN

"That's What It's All About"

5 R&R +258
*4 BILLBOARD
+276 #9 GAINER!

HOSTING CMA'S on NOV. 9

BRAD PAISLEY

"MUD ON THE TIRES"

22 R&R +252
*25 Billboard
+255 #10 Gainer!

TODAY SHOW PERFORMANCE ON 10/23

alan JACKSON

"Monday Morning Church"

28 R&R +383
*29 Billboard
+471 #2 Gainer!

ON THE MOST ADDED LIST AGAIN!

© 2004 BMG Music



October 19, 2004

POWERED BY
MEDIABASE

LW	TW	ARTIST	Title	Label(s)	Total Points	+/- Points	Total Plays	+/- Plays	Tot. Aud. (00)	+/- Aud. (00)	Wks On	Total Station
Breaker	26	PAT GREEN	Don't Break My Heart Again	(Universal/Republic/Mercury)	2305	294	766	+88	73849	13329	10	68/5
	26	BLUE COUNTY	That's Cool	(Asylum/Curb)	2120	-732	836	-324	55753	-21041	21	92/0
Breaker	28	ALAN JACKSON	Monday Morning Church	(Arista)	1969	848	763	+383	65447	28397	3	78/17
	33	29	SUGARLAND	Baby Girl (Mercury)	1951	106	781	+55	60101	6134	13	71/3
	32	30	KATRINA ELAM	No End In Sight (Universal South)	1948	102	758	+26	56589	7025	14	79/1
Breaker	31	BILLY DEAN	Let Them Be Little	(Curb)	1797	492	741	+171	46821	13348	7	69/8
	30	32	TRICK PONY	The Bride (Asylum/Curb)	1618	-476	623	-217	42679	-12258	17	76/0
	35	33	RESTLESS HEART	Feel My Way To You (Koch)	1177	-452	459	-195	33556	-10572	14	64/0
	39	34	JAMIE O'NEAL	Trying To Find Atlantis (Capitol)	1102	292	407	+73	30329	7781	3	57/9
	40	35	MIRANDA LAMBERT	Me And Charlie Talking (Epic)	913	108	330	+76	23018	3734	2	49/9
	41	36	CATHERINE BRITT	The Upside Of Being Down (RCA)	838	83	343	+20	19226	2031	9	59/3
	45	37	DUSTY DRAKE	I Am The Working Man (Warner Bros.)	708	155	322	+69	18851	6618	4	43/2
	50	38	TRACY BYRD	Revenge Of A Middle-Aged Woman (BNA)	676	261	284	+128	19823	8594	2	38/8
	44	39	RACHEL PROCTOR	Where I Belong (BNA)	644	47	304	+22	12664	3055	5	43/3
Debut	40	ANDY GRIGGS	If Heaven (RCA)		620	428	172	+121	19096	12113	1	41/16
Debut	41	BRET MICHAELS f/J. ANDREWS	All I Ever Needed (B.M.B./Poor Boy)		612	214	254	+81	11607	996	1	11/0
	48	42	CAROLINA RAIN	I Ain't Scared (Equity Music Group)	604	125	275	+50	15486	3470	4	41/7
	46	43	JEFF BATES	Long, Slow Kisses (RCA)	589	66	250	+37	15875	3768	3	35/8
	43	44	SHELLY FAIRCHILD	You Don't Lie Here Anymore (Columbia)	546	-51	261	+9	12612	2674	2	49/9
Debut	45	KEITH URBAN	You're My Better Half (Capitol)		495	265	171	+95	16621	14003	1	36/34
Debut	46	LEE ANN WOMACK	I May Hate Myself In The Morning (MCA)		470	263	153	+82	8894	1041	1	41/40
Debut	47	GRETCHEN WILSON	When I Think About Cheatin' (Epic)		451	312	153	+92	17133	12596	1	28/22
Debut	48	KERRY HARVICK	Cowgirls (Lyric Street)		446	188	201	+87	10888	4405	1	35/6
	49	49	KEVIN FOWLER	Ain't Drinkin' Anymore (Equity Music Group)	428	4	101	-2	11673	-1308	6	8/0
	47	50	TRENT WILLMON	The Good Life (Columbia)	422	-80	56	-32	14236	-2403	12	0/0

© 2004 Radio & Records, Inc.

KATRINA ELAM "No End In Sight"

ADD KATRINA NOW! **30** R&R **33*** BB

Great Research Stories from:

KZLA/Los Angeles #11 WDSY/Pittsburgh #8 KSFS/Fresno #6

Crazy Phones:

KBEQ/Kansas City KUSS/San Diego KTOM/Monterey

Catch her live on the "Be There '04" CMT Tour - opening for Keith Urban Upcoming cities: Birmingham, Savannah, Atlanta, Boston, D.C., NYC, Pittsburgh, Atlantic City, Champaign, Milwaukee, Detroit, Columbus

Joe Nichols "If Nobody Believed In You"

Thank you, Country Radio, for believing and giving Joe his latest Top 10 Smash!!!

10 R&R **10*** BB

"What's A Guy Gotta Do"
Joe's newest uptempo single!
Going for adds:
November 8th



Cross Canadian Ragweed - "Alabama" - latest single from the album "Soul Gravy" - 115,000 units sold!

COUNTRY

MOST ADDED

ARTIST Title Label(s)	Adds
LEE ANN WOMACK I May Hate Myself In The Morning (MCA)	40
KEITH URBAN You're My Better Half (Capitol)	34
GRETCHEN WILSON When I Think About Cheatin' (Epic)	22
ALAN JACKSON Monday Morning Church (Arista)	17
ANDY GRIGGS If Heaven (RCA)	16
BRAD PAISLEY Mud On The Tires (Arista)	12
TRAVIS TRITT f/JOHN MELLENCAMP What Say You (Columbia)	12
JULIE ROBERTS The Chance (Mercury)	11
RANDY TRAVIS Four Walls (Word/Warner Bros.)	11
JOSH GRACIN Nothin' To Lose (Lyric Street)	10

MOST INCREASED POINTS

ARTIST Title Label(s)	Total Pt. Increase
TIM MCGRAW Back When (Curb)	+1324
LONESTAR Mr. Mom (BNA)	+1103
LEANN RIMES Nothin' 'Bout Love Makes Sense (Asylum/Curb)	+970
GARY ALLAN Nothing On But The Radio (MCA)	+858
ALAN JACKSON Monday Morning Church (Arista)	+848
KENNY CHESNEY The Woman With You (BNA)	+818
PHIL VASSAR In A Real Love (Arista)	+703
BROOKS & DUNN That's What It's All About (Arista)	+696
BIG & RICH Holy Water (Warner Bros.)	+695
BRAD PAISLEY Mud On The Tires (Arista)	+641

MOST INCREASED PLAYS

ARTIST Title Label(s)	Total Play Increase
TIM MCGRAW Back When (Curb)	+512
LONESTAR Mr. Mom (BNA)	+415
ALAN JACKSON Monday Morning Church (Arista)	+383
PHIL VASSAR In A Real Love (Arista)	+319
LEANN RIMES Nothin' 'Bout Love Makes Sense (Asylum/Curb)	+306
KENNY CHESNEY The Woman With You (BNA)	+292
BIG & RICH Holy Water (Warner Bros.)	+268
BROOKS & DUNN That's What It's All About (Arista)	+258
GARY ALLAN Nothing On But The Radio (MCA)	+258
SHANIA TWAIN W/ BILLY CURRINGTON Party ... (Mercury)	+253

COUNTRY INDICATOR

MOST ADDED

ARTIST Title Label(s)	Adds
KEITH URBAN You're My Better Half (Capitol)	44
LEE ANN WOMACK I May Hate Myself In The Morning (MCA)	31
GRETCHEN WILSON When I Think About Cheatin' (Epic)	27
JAMIE O'NEAL Trying To Find Atlantis (Capitol)	25
MARK CHESNUTT I'm A Saint (Vivaton)	23
ALAN JACKSON Monday Morning Church (Arista)	17
ANDY GRIGGS If Heaven (RCA)	17
SHELLY FAIRCHILD You Don't Lie Here Anymore (Columbia)	11
BIG & RICH Holy Water (Warner Bros.)	10
BILLY DEAN Let Them Be Little (Curb)	10

MOST INCREASED POINTS

ARTIST Title Label(s)	Total Pt. Increase
TIM MCGRAW Back When (Curb)	+651
ALAN JACKSON Monday Morning Church (Arista)	+617
GARY ALLAN Nothing On But The Radio (MCA)	+470
KENNY CHESNEY The Woman With You (BNA)	+413
LEE ANN WOMACK I May Hate Myself In The Morning (MCA)	+375
KEITH URBAN You're My Better Half (Capitol)	+373
SHANIA TWAIN W/ BILLY CURRINGTON Party ... (Mercury)	+367
LEANN RIMES Nothin' 'Bout Love Makes Sense (Asylum/Curb)	+364
GRETCHEN WILSON When I Think About Cheatin' (Epic)	+315
PHIL VASSAR In A Real Love (Arista)	+313

MOST INCREASED PLAYS

ARTIST Title Label(s)	Total Play Increase
TIM MCGRAW Back When (Curb)	+488
ALAN JACKSON Monday Morning Church (Arista)	+480
GARY ALLAN Nothing On But The Radio (MCA)	+378
KEITH URBAN You're My Better Half (Capitol)	+326
LEE ANN WOMACK I May Hate Myself In The Morning (MCA)	+298
KENNY CHESNEY The Woman With You (BNA)	+292
LEANN RIMES Nothin' 'Bout Love Makes Sense (Asylum/Curb)	+292
SHANIA TWAIN W/ BILLY CURRINGTON Party ... (Mercury)	+287
GRETCHEN WILSON When I Think About Cheatin' (Epic)	+265
BRAD PAISLEY Mud On The Tires (Arista)	+251

Rascal Flatts

“Bless The Broken Road”

The new single from CMA & ACM vocal group of the Year

On your desk now...Impacting 11/1 **LYRIC STREET RECORDS**

COUNTRY INDICATOR NEW & ACTIVE

WILLIE NELSON Midnight Rider (*Lost Highway/MCA*)

Total Plays: 142, Total Stations: 14, Adds: 1

WARREN BROTHERS Sell A Lot Of Beer (*429*)

Total Plays: 111, Total Stations: 12, Adds: 1

JAY TETER Football, Beer And You (*Quarterback*)

Total Plays: 103, Total Stations: 15, Adds: 2

GLENN CUMMINGS Big (*Gulf Coast*)

Total Plays: 103, Total Stations: 13, Adds: 2

RANDY TRAVIS Four Walls (*Word/Warner Bros.*)

Total Plays: 56, Total Stations: 10, Adds: 8

COUNTRY NEW & ACTIVE

DAVID LEE MURPHY Inspiration (*Audium*)

Total Plays: 173, Total Stations: 23, Adds: 1

TRACY LAWRENCE Sawdust On Her Halo (*DreamWorks*)

Total Plays: 153, Total Stations: 24, Adds: 3

CHAD BROCK That Changed Me (*BBR*)

Total Plays: 116, Total Stations: 24, Adds: 1

DAVID BALL Louisiana Melody (*Quarterback*)

Total Plays: 99, Total Stations: 10, Adds: 3

MARK CHESNUTT I'm A Saint (*Vivaton*)

Total Plays: 67, Total Stations: 19, Adds: 8

JULIE ROBERTS The Chance (*Mercury*)

Total Plays: 66, Total Stations: 22, Adds: 11

UNCLE KRACKER Writing It Down (*Lava/Warner Bros.*)

Total Plays: 60, Total Stations: 13, Adds: 1

RANDY TRAVIS Four Walls (*Word/Warner Bros.*)

Total Plays: 43, Total Stations: 11, Adds: 11

R&R Going For Adds™

10/25

ALISON KRAUSS & UNION STATION Restless (*Rounder*)

AMY DALLEY I Would Cry (*Curb*)

GRETCHEN WILSON When I Think About Cheatin' (*Epic*)

HANK WILLIAMS, JR. Devil In The Bottle (*Asylum/Curb*)

JIMMY WAYNE Paper Angels (*DreamWorks*)

KEITH URBAN You're My Better Half (*Capitol*)

11/1

CRAIG MORGAN That's What I Love About Sunday (*BBR*)

RASCAL FLATTS Bless The Broken Road (*Lyric Street*)

11/8

TERRI CLARK The World Needs A Drink (*Mercury*)

TRENT WILLMON Home Sweet Holiday Inn (*Columbia*)

MOST PLAYED RECURRENTS

ARTIST Title Label(s)

KEITH URBAN Days Go By (*Capitol*)

GRETCHEN WILSON Here For The Party (*Epic*)

TIM MCGRAW Live Like You Were Dying (*Curb*)

KENNY CHESNEY I Go Back (*BNA*)

ALAN JACKSON Too Much Of A Good Thing Is A Good Thing (*Arista*)

TERRI CLARK Girls Lie Too (*Mercury*)

ANDY GRIGGS She Thinks She Needs Me (*RCA*)

JOHN MICHAEL MONTGOMERY Letters From Home (*Warner Bros.*)

GRETCHEN WILSON Redneck Woman (*Epic*)

ALAN JACKSON Remember When (*Arista*)

Total
Plays

3563

3046

2810

2143

1612

1590

1514

1420

1344

1328

**POWERED BY
MEDIABASE**

113 Country reporters. Songs ranked by total points for the airplay week of 10/10-10/16. Bullets appear on songs gaining points and/or plays or remaining flat from previous week. If two songs are tied in total points, the song with the larger increase in points is placed first. Songs below No. 1 and down in points and plays for three consecutive weeks are moved to recurrent. Most Added is the total number of new adds officially reported to R&R by each reporting station. Songs unreported as adds do not count toward overall total stations playing a song. Most Increased Points lists the songs with the greatest week-to-week increases in total points. Station Weight = AQH Persons + (Market rank X 10) divided by 4180. Total Audience equals Average Quarter Hour Persons times number of plays (times 100). Each daypart on each station is assigned an AQH number. Average Quarter Hour Persons used herein with permission from Arbitron Inc. (© 2004, Arbitron Inc.). © 2004, R&R, Inc.



"And to think I really dug another single that was on my desk! But This Stopped Me Cold!"

Mike Kennedy / KBEQ

"WOW!! Anyone that has ever been placed in the same position now has a voice! Good God the girl can write!" Cary Rolfe / KUPL

"This is an artist that can really break through the clutter."

Mike Brophey /WKLB

"Love the beginning instrumentation. Vocals cut through and strike an emotional chord. This dog will hunt!" Justin Case / WWYZ

"I love her writing. She's a star!" Kerry Wolfe / WMIL

Amy Dalley "I Would Cry"

Impacting This Monday, October 25th



October 19, 2004

LW	TW	ARTIST Title Label(s)	Total Points	+/- Points	Total Plays	+/- Plays	Tot. Aud. (00)	+/- Aud. (00)	Wks On	Total Station
1	①	GEORGE STRAIT I Hate Everything (MCA)	5914	8	4542	+17	137562	-4163	16	113/0
4	②	PHIL VASSAR In A Real Love (Arista)	5121	313	3920	+243	119051	5242	26	112/1
3	③	TOBY KEITH Stays In Mexico (DreamWorks)	5096	148	3960	+150	117000	1052	12	113/0
2	4	SARA EVANS Suds In The Bucket (RCA)	5086	-528	3861	-443	120188	-14150	26	106/0
8	⑤	BROOKS & DUNN That's What It's All About (Arista)	4820	308	3749	+246	111319	4758	17	110/0
9	⑥	GARY ALLAN Nothing On But The Radio (MCA)	4703	470	3624	+378	108101	9296	19	113/0
10	⑦	LONESTAR Mr. Mom (BNA)	4466	248	3451	+203	104179	5085	15	112/1
12	⑧	KENNY CHESNEY The Woman With You (BNA)	3963	413	3021	+292	92269	9178	9	112/1
13	⑨	BLAKE SHELTON Some Beach (Warner Bros.)	3779	291	2890	+235	89233	5907	12	112/3
14	⑩	DIERKS BENTLEY How Am I Doin' (Capitol)	3660	275	2846	+221	83875	5263	24	111/1
7	11	RASCAL FLATTS Feels Like Today (Lyric Street)	3595	-961	2788	-730	84878	-21099	19	103/0
19	⑫	TIM MCGRAW Back When (Curb)	3348	651	2610	+488	77092	15542	6	107/3
16	⑬	SHANIA TWAIN w/ BILLY CURRINGTON Party For Two (Mercury)	3324	367	2573	+287	75886	8088	7	109/1
18	⑭	DARRYL WORLEY Awful, Beautiful Life (DreamWorks)	3092	254	2371	+205	70913	4493	16	107/1
17	⑮	SHEDAISY Come Home Soon (Lyric Street)	2914	55	2251	+54	67238	-968	16	108/1
21	⑯	LEANN RIMES Nothin' 'Bout Love Makes Sense (Asylum/Curb)	2315	364	1812	+292	53835	8597	8	98/3
20	⑰	MONTGOMERY GENTRY You Do Your Thing (Columbia)	2286	42	1790	+54	54323	1671	15	91/1
22	⑱	REBA MCENTIRE He Gets That From Me (MCA)	2137	271	1691	+215	48985	7153	9	95/1
23	⑲	JIMMY BUFFETT f/MARTINA MCBRIDE Trip ... (RCA/Mailboat)	2093	250	1650	+203	48667	5992	9	87/1
25	⑳	BRAD PAISLEY Mud On The Tires (Arista)	1791	311	1431	+251	40563	6439	7	89/4
31	㉑	ALAN JACKSON Monday Morning Church (Arista)	1710	617	1347	+480	38822	14691	3	100/17
26	㉒	BIG & RICH Holy Water (Warner Bros.)	1598	288	1305	+250	35972	6973	5	94/10
28	㉓	TRAVIS TRITT f/JOHN MELLENCAMP What Say You (Columbia)	1519	258	1147	+180	37642	6748	7	84/4
30	㉔	JOSH GRACIN Nothin' To Lose (Lyric Street)	1306	202	1019	+159	29273	4242	8	77/5
32	㉕	SUGARLAND Baby Girl (Mercury)	1182	155	908	+116	24534	3457	14	59/5

© 2004 Radio & Records, Inc.


RADIO PACKAGE

CMA Awards Radio Package

Only MJI can bring your station
COUNTRY MUSIC'S BIGGEST NIGHT™
 The 38th Annual CMA Awards

Available for Barter/Market Exclusive

 Contact Premiere Affiliate Relations at
 818.377.5300

MJI PROGRAMMING:

The Official Radio Broadcaster of the CMA Awards


 A Division of
 Premiere Radio Networks

October 19, 2004

LW	TW	ARTIST Title Label(s)	Total Points	+/- Points	Total Plays	+/- Plays	Tot. Aud. (00)	+/- Aud. (00)	Wks On	Total Station
33	26	PAT GREEN Don't Break My Heart Again (Universal/Republic/Mercury)	1162	162	905	+121	23365	2777	9	61/2
34	27	KATRINA ELAM No End In Sight (Universal South)	1016	100	846	+87	21714	2602	13	64/2
36	28	JAMIE O'NEAL Trying To Find Atlantis (Capitol)	771	194	617	+162	16524	4333	3	69/25
38	29	JEFF BATES Long, Slow Kisses (RCA)	596	115	504	+93	13149	2859	5	44/6
42	30	BILLY DEAN Let Them Be Little (Curb)	563	166	385	+122	14720	4386	5	36/10
43	31	ANDY GRIGGS If Heaven (RCA)	540	167	447	+163	11909	3204	2	43/17
Debut	32	KEITH URBAN You're My Better Half (Capitol)	522	373	424	+326	11608	8057	1	51/44
35	33	RESTLESS HEART Feel My Way To You (Koch)	501	-387	390	-298	12885	-7520	15	32/1
37	34	KEITH BRYANT Ridin' With The Legend (Lofton Creek)	496	-17	417	-14	11086	639	16	24/0
Debut	35	GRETCHEN WILSON When I Think About Cheatin' (Epic)	480	315	371	+265	10363	6515	1	36/27
39	36	CATHERINE BRITT The Upside Of Being Down (RCA)	469	2	361	+12	11038	106	10	32/0
45	37	TRACY BYRD Revenge Of A Middle-Aged Woman (BNA)	465	120	368	+79	10707	3284	2	35/6
Debut	38	LEE ANN WOMACK I May Hate Myself In The Morning (MCA)	452	375	367	+298	10423	8431	1	39/31
48	39	SHELLY FAIRCHILD You Don't Lie Here Anymore (Columbia)	447	184	375	+145	9830	3888	2	34/11
44	40	TRACY LAWRENCE Sawdust On Her Halo (DreamWorks)	426	72	364	+66	10556	1952	3	34/4
40	41	TRENT WILLMON Dixie Rose Deluxe's... (Columbia)	403	-31	300	-32	10063	-1134	10	26/0
Debut	42	MARK CHESNUTT I'm A Saint (Vivaton)	367	288	289	+233	7445	6333	1	35/23
50	43	MIRANDA LAMBERT Me And Charlie Talking (Epic)	334	133	274	+102	7482	2860	2	26/9
49	44	KERRY HARVICK Cowgirls (Lyric Street)	296	46	254	+47	6428	974	2	27/6
Debut	45	JULIE ROBERTS The Chance (Mercury)	270	85	213	+70	5363	1412	1	22/6
47	46	RACHEL PROCTOR Where I Belong (BNA)	261	-6	197	-5	6181	-453	4	17/1
Debut	47	DAVID LEE MURPHY Inspiration (Audium)	220	95	191	+73	5164	2106	1	19/3
-	48	CAROLINA RAIN I Ain't Scared (Equity Music Group)	190	-5	127	0	5081	-45	2	16/1
Debut	49	DUSTY DRAKE I Am The Working Man (Warner Bros.)	184	38	166	+35	3802	871	1	17/1
-	50	KEVIN FOWLER Ain't Drinkin' Anymore (Equity Music Group)	183	5	147	+3	3856	-123	3	11/1

© 2004 Radio & Records, Inc.



DON'T TOUCH THAT DIAL!

Personal Music Test

Better recruitment than hotel ballroom ATMs
 Small one-on-one groups
 Random start of song hooks
 0-100 sliding Positive & Burn scales



The Music Testing Specialists
www.ComQuestMusicTesting.com



Artist Title (Label)	TW	LW	Fam.	Burn	P 25-54	W 25-54	M 25-54
GARY ALLAN Nothing On But The Radio (MCA)	4.29	4.18	95%	11%	4.31	4.45	4.21
SARA EVANS Suds In The Bucket (RCA)	4.28	4.15	98%	24%	4.28	4.36	4.23
TIM MCGRAW Back When (Curb)	4.28	4.20	85%	9%	4.29	4.48	4.14
KEITH URBAN Days Go By (Capitol)	4.26	4.21	98%	19%	4.28	4.45	4.14
BLAKE SHELTON Some Beach (Warner Bros.)	4.26	4.17	91%	10%	4.33	4.35	4.31
KENNY CHESNEY The Woman With You (BNA)	4.21	4.12	82%	9%	4.16	4.30	4.04
DIERKS BENTLEY How Am I Doin' (Capitol)	4.20	4.23	95%	18%	4.15	4.24	4.09
TRACE ADKINS Rough & Ready (Capitol)	4.16	4.18	97%	23%	4.16	4.29	4.06
BROOKS & DUNN That's What It's All About (Arista)	4.13	4.06	96%	18%	4.16	4.39	3.98
LONESTAR Mr. Mom (BNA)	4.12	4.09	96%	19%	4.13	4.30	3.99
GEORGE STRAIT I Hate Everything (MCA)	4.11	3.98	99%	24%	4.17	4.17	4.16
JOE NICHOLS If Nobody Believed In You (Universal South)	4.09	4.09	97%	28%	4.15	4.15	4.14
JIMMY WAYNE You Are (DreamWorks)	4.09	4.02	83%	17%	4.08	4.33	3.91
PHIL VASSAR In A Real Love (Arista)	4.04	3.90	94%	17%	4.00	4.09	3.93
SHEDAISY Come Home Soon (Lyric Street)	4.03	3.93	87%	16%	3.97	4.09	3.88
DARRYL WORLEY Awful, Beautiful Life (DreamWorks)	3.99	3.95	71%	8%	3.95	3.88	4.00
ALAN JACKSON Too Much Of A Good Thing Is A Good Thing (Arista)	3.98	3.88	98%	28%	4.11	4.18	4.06
GRETCHEN WILSON Here For The Party (Epic)	3.96	3.90	99%	36%	3.97	4.13	3.85
RASCAL FLATTS Feels Like Today (Lyric Street)	3.96	3.97	95%	25%	3.90	4.11	3.74
RESTLESS HEART Feel My Way To You (Koch)	3.95	—	41%	4%	3.95	4.22	3.79
MONTGOMERY GENTRY You Do Your Thing (Columbia)	3.91	3.84	86%	15%	3.90	3.93	3.87
TOBY KEITH Stays In Mexico (DreamWorks)	3.90	3.85	98%	28%	3.87	4.05	3.72
REBA MCENTIRE He Gets That From Me (MCA)	3.89	3.94	74%	11%	3.92	3.93	3.90
BLUE COUNTY That's Cool (Asylum/Curb)	3.89	3.89	67%	10%	3.87	4.02	3.77
JIMMY BUFFETT f/MARTINA MCBRIDE Trip Around The Sun (RCA/Mailboat)	3.87	3.91	60%	10%	3.88	3.92	3.85
TRAVIS TRITT f/JOHN MELLENCAMP What Say You (Columbia)	3.85	—	54%	8%	3.86	4.01	3.75
TRICK PONY The Bride (Asylum/Curb)	3.76	3.78	81%	16%	3.70	3.96	3.52
STEVE HOLY Put Your Best Dress On (Curb)	3.71	3.63	53%	10%	3.73	3.80	3.69
LEANN RIMES Nothin' 'Bout Love Makes Sense (Asylum/Curb)	3.70	3.61	62%	12%	3.72	3.82	3.66

Total sample size is 433 respondents. Total average favorability estimates are based on a scale of 1-5. (1=dislike very much, 5 = like very much). Total familiarity represents the percentage of respondents who recognized the song. Total burn represents the number of respondents who said they are tired of hearing the song. Songs must have 40% familiarity to appear on survey. Sample composition is based on persons 12+. Persons are screened via the Internet. Once passed, they can take the music test based on the format/music preference. RateTheMusic.com results are not meant to replace callout research. The results are intended to show opinions of participants on the the Internet only. RateTheMusic is a registered trademark of RateTheMusic.com. The RTM system, is available for local radio stations by calling 818-377-5300. RateTheMusic.com data is provided by Mediabase Research, a division of Premiere Radio Networks.

If you experienced transmission problems ... please call our Circulation Department at 310/788-1625.

© 2004 Radio & Records, Inc. All Rights Reserved No part of this material may be reproduced in any form or incorporated in any information retrieval system without written permission of the Publisher.

REPORTING STATION PLAYLISTS

www.radioandrecords.com

