

RADIO DIAL



Volume I, No. 2

Thursday, May 28, 1931

Price 5c



Annette Hanshaw, pretty soloist on the Van Heusen program (WKRC and Columbia, Friday at 9 p. m.) is one of radio's most popular artists both on and off the air. She comes from a prominent New York family. When she isn't broadcasting, Miss Hanshaw is busy running about to appear as soloist at Manhattan social affairs.

Local Radio Stations Have Brilliant Array of Stars In This Week's Features

Camels Are Coming

The Camel Pleasure Hour has gone off the NBC network and WLW. May 27 was the last program. As noted in RADIO DIAL last week, WKRC now has the Camel Quarter-Hour every day, except Sunday, at 6:45 p. m., with Antony Wons (Scrap Book Man of WLS, WLW, CBS), Morton Downey (Columbia's crooning sensation), and Jacques Renard and his Orchestra.

Ruth Etting of "Simple Simon", "Whoopee" is WKRC Guest Artist

RUTH ETTING, who not long ago drew more than \$3,000 for her week at the RKO Albee, will broadcast from station WKRC at 9 o'clock Wednesday night (June 3) in the Vitality Personalities program, a weekly CBS feature. She will sing "Faithfully Yours" and "I'm Crazy 'Bout My Baby." Assisting her will be Freddie Rich and his orchestra, the Roundtowners Quartet, and Ted Husing in the role of master of ceremonies. Miss Etting has reached stardom in four fields of entertainment.



(Continued on page 3)

Everett Marshall Is Atwater Kent Soloist Sunday

Everett Marshall, baritone of the Metropolitan Opera Company, will be soloist in the Atwater Kent program through WSAI on Sunday night (May 31) at 8:15.

- The program follows:
- The Wedding of the Rose.....Jessel Orchestra
 - Yours is My Heart Alone, from "The Land of Smiles".....Lehar
 - El Gulliarico (The Gulliar).....Soriano
 - Danny Deever.....Damrosch
 - Mr. Marshall
 - Paraphrase on "I Might be Your Onces-While," from "Annel Face".....Herbert Orchestra
 - The Hills of Home.....Fox
 - Serenata.....Toselli
 - Song of the Vagabonds, from "The Vagabond King".....Pratt
 - Mr. Marshall

Gibson Organizes Own Orchestra

Instead of bringing "big name" bands to the Hotel Gibson this summer, C. C. Schiffler, managing director, has organized the Greater Hotel Gibson orchestra to play in the Roof Garden, to broadcast through station WLW and WSAI, and to make occasional good will tours for the hotel.

Engineers

Engineers of the iron and steel industries will be saluted during the Westinghouse program, via NBC and WCKY, Sunday at 8:45 p. m. F. O. Schnure, President of the Association of Iron and Steel Electrical Engineers, will be the guest speaker. The orchestra is directed by Zoel Parentean.



Kenneth Roberts, new CBS announcer, is heard locally through station WKRC on network programs. He left the stage in favor of radio broadcasting.

Like Pulling Teeth

Graham McNamie thinks there will be women announcers when the profession of radio announcing is as firmly established as dentistry.

Best of Week's Radio Features Are Selected for You Here

Amos 'n' Andy—WCKY and WLW daily except Sunday, at 6 o'clock.

Camel Quarter-Hour—WKRC and CBS, every day except Sunday, at 6:45 p. m., starting June 1 (Monday).

"Mass in B Flat," by Mercadante—Cathedral Hour, WKRC and CBS, Sunday afternoon (May 31) at 3 o'clock.

Detroit Symphony Orchestra—Graham-Paige program, WKRC and CBS, Sunday night (May 31) at 8:30.

Rosa Ponselle, prima donna—WKRC from London at 2 o'clock Monday afternoon (June 1).

Roxy Symphony Orchestra—WLW and NBC, Monday night (June 1) from 6:50 to 7:30.

Joe Weber and Lew Fields—Webster program, WSAI and NBC, Monday night (June 1) at 7:15.

Adventures of Sherlock Holmes—WSAI and NBC, Monday night (June 1) at 9 o'clock.

Cincinnati Reds vs. Philadelphia—WFBE, Tuesday (June 2), Thursday (June 4) at 2:45 p. m.

Philco Symphony Orchestra—WKRC and CBS, Tuesday night (June 2) at 8:30.

Ruth Etting, Stage and Screen Star—Vitality Personalities, WKRC and CBS, Wednesday night (June 3) at 9:00 o'clock.

Ray Perkins, Comedian—Libby program, WLW and NBC, Thursday and Friday mornings (June 4 and 5) at 9 o'clock.

Clara, Lou and Em—WLW and NBC, at 9:30 p. m., on Thursday, Friday and Saturday (June 4, 5 and 6).

Chie Farmer, Yodeler—Nestle program, WLW, Friday night (June 5) at 7 o'clock.

Rosa Ponselle, American-born prima donna, will sing through WKRC Monday afternoon (June 1) at 2 o'clock, in the Columbia Broadcasting System's trans-Atlantic broadcast from the stage of the Royal Opera House in London. She will sing the part of Leonora in Verdi's opera, "La Forza del Destino." The part is considered one of her greatest roles. She sang it opposite Caruso in her operatic debut in 1916.

Salt and Peanuts Play RKO Albee Week of June 6

Salt and Peanuts (WLW) will play the RKO Albee in Cincinnati the week of June 6. They have been making a hit in personal appearances with their comedy and singing act in theaters in Indiana, Ohio, Kentucky and West Virginia.

Weekly RADIO DIAL

Published every Thursday by the Radio Dial Publishing Co., 22 East 12th St., Cincinnati, Ohio. Contents copyrighted.

VOL. I MAY 28, 1931 NO. 2

Guy Lombardo is Scheduled For Busy Week in Cincinnati

Cincinnati will entertain one of the country's most popular orchestra leaders when Guy Lombardo comes to town the week of June 20.

Cincinnati also will be entertained most generously by Lombardo and his Royal Canadians.

Here's what the famous orchestra is tentatively scheduled to do in one busy week: Headline the vaudeville bill at the Albee theatre; broadcast the Robert Burns Panatela program over station WKRC at 9 p. m. Monday, June 22, for relay over the Columbia Broadcasting System; broadcast daily from the Netherland Plaza over WLW and possible WSAI.

Lombardo has been engaged to bring his Royal Canadians to the Netherland Plaza June 20 to play daily in that hotel's Restaurant Continentale and Pavillion Caprice. His daily broadcast over WLW will be picked up from the hotel.

Probably no other orchestra has exerted so definite an influence on the public preference in dance music as this famous aggregation. Lombardo is largely responsible for the present taste for muffled brasses and slow, crooning rhythm, as compared to the blatant syncopation of a few years ago.

Since the Royal Canadians made their debut 11 years ago in London, Ont., with young Guy playing the violin, his brother Carmen, now famed as the composer of such songs hits as "Conquette", "Sweethearts on Parade", and "Last Night I Dreamed You Kissed me", playing the flute and Fritz Kreitzer at the piano. Another brother, Lebert, was enlisted, and musicians were gradually added until the orchestra numbered 11 in all. Of this number, nine members of the present orchestra belong to the original Royal Canadians, including Carmen, who does most of the arranging for the orchestra, as well as the playing.

Lombardo's initial broadcast was in Cleveland, where the orchestra first gained wide prominence, and where they played for three years. Then followed a lengthy Chicago engagement, a vaudeville tour of the United States, and a return trip to Canada.

Present headquarters of the Royal Canadians is the Hotel Roosevelt in New York City. They broadcast daily from the hotel's Grill when in New York, and have played for several of the leading sponsored chain programs.

Tramp Starr Has Two WKRC Dates

Tramp Starr, Hoosier poet. will read his poetry at WKRC on Tuesday afternoon, June 2, at 4:45, and at 4:30 on Thursday afternoon, June 4. WLW had Starr on its R. F. D. program for awhile. Mail showed that his homely philosophy and his rememberable rhymes are what the radio public wants.

WCKY Starts New Scrap Book Time

Station WCKY now has a scrap book. A period called "Fascinating Philosophy" to be read by Bob White every week-day morning at 8 o'clock and at 9:15 on Tuesday night has been announced by Jerry Alers, manager of the station. The scrap book will appeal to listeners of all ages, Alers says.

Philco Symphony Play Through WKRC Tuesday

"Parsifal" selections, the overture to Borodin's "Prince Igor," and the overture to Smetana's "Bartered Bride" will be played by the Philco Symphony Orchestra under the direction of Howard Barlow through station WKRC at 8:30 Tuesday night (June 2).

Also included will be Beethoven's whimsical scherzo from the "F Major Symphony." The movement is an ingeniously contrived orchestration suggesting the mechanical beat of the metronome, just invented at the time Beethoven wrote the symphony.



Guy Lombardo, who will bring his Royal Canadians to Cincinnati the week of June 20th, to play at Netherland Plaza, RKO Albee, and to broadcast from local radio stations.

Mobiloil Concert Goes Up In Clouds

With its bright lights making Broadway appear as a silver strip dissecting the dark pool of buildings nearly 1,000 feet below, the Mobiloil Concert Hour will be broadcast from the 82nd floor of the Empire State Building at 7:30, Wednesday night (June 3), over WSAI and other NBC stations.

The keynote of the program will be the orchestra's rendition of "Manhattan Skyscraper," by Rube Hutton, who is said to have been inspired by the rising tower of the Empire State building. Nathaniel Shilkret will lead the orchestra. From their birdseye post, the artists will try to convey to the audience their impressions of Broadway far below with Henry M. Neely, "the Old Stager", interpreting the scene.

"Surprise" Guest Is On Board Gold Medal Freight

Carrying another "surprise package" in the form of a guest artist whose identity won't be revealed until the first musical stop, the Gold Medal Fast Freight will travel over the Columbia Broadcasting System to WKRC Wednesday, June 3, at 8 p. m. Eddie, the organist, and a male quartet will back up the guest artist. Songs include "Happy Little Tune," "Minnie the Moocher," "Faithfully Yours," "Let Me Dream," "Jig Time," and "Stout Hearted Men."

Mystery Drama

Radio listeners soon may learn the solution of the mystery drama being broadcast by the WCKY Players every Monday night at 8:15. Episode five of the series of six broadcasts will be presented Monday.

Hilo Serenaders Are Texas Boys

When Robert Hodge and Ray Jones boarded a steamer for a cruise to Hawaii little did these Texas youths dream that they would become the Hilo Serenaders and tour the country for three years. Neither youth knew the other. Then they learned that each played Hawaiian guitars. So well did they master the haunting melodies of Hawaii that they have become popular with the radio audience over WCKY every Saturday at 9:45 p. m., and also in their theatrical appearances.

French Opera Star Sings Tuesday With Los Amigos



Music lovers listening to WLW Tuesday night (June 2) will hear Mlle. Alys Michot, internationally famed French soprano, in a group of classical solos during the Los Amigos hour at 11 o'clock.

"Miranni Asi" (Spanish), by Fuentes, and "Chanson Florian" (French), by Godard, will be Mlle. Michot's solos.

Mlle. Michot was born in Paris where her father, M. Alexander Michot, was a noted opera singer. She received her musical and dramatic education in Paris under various masters and her marked talents were early developed. At the age of 13 years she played the organ in the Basilique du Sacre Coeur and when 18 years of age she sang with the Opera Comique where her talents soon won for her leading soprano roles. Mlle. Michot's career includes appearances before the King and Queen of Belgium as well as leading roles with the Chicago Opera company.

Armstrong Quakers

Armstrong Quakers (NBC) are back on WLW at 9 p. m. Friday for eight weeks, starting this week (May 29). Crosley Concert goes back to 10:30 Sunday night to make room. After June 14 the concert will be heard from 10:15 to 11 o'clock.

Bob Bishow Glows at Radio Dial's Newsstand Sale

Bob Bishow, genial proprietor of the Fountain News and Book Shop at 426 Walnut Street says the RADIO DIAL is the greatest improvement that has been put before radio fans since the inception of daily programs. Since RADIO DIAL made its appearance last week, Bob has sold out several times. His many friends are congratulating him upon having recommended RADIO DIAL to them.

St. Martin's Choir to Sing Monday at WLW

St. Martin's Church opera chorus will sing the concertized version of Gounod's "Faust" in the Great Composers' program at station WLW at 10 o'clock Monday night (June 1).

Directed by Joseph Fehring, the 30-voiced choir of the Westwood church has been studying the number for some three years.

William C. Stoess will conduct the orchestra which will accompany the singers. It will open the half hour with the overture to Rossini's "Cinderella," and will conclude it with Verdi's "Aida."

Musical Review Star and Pianist Have Daily Spot

Lottie Gee, lately star of "Shuffle Along," negro musical review, is singing at station WFBZ every night at 8:15 and on Sunday morning at 10:15. Her accompanist is Murdock Williams, a piano star in his own right. For some months he played at WLW as "The Song and Piano Man From Dixie." He also has entertained crowds in downtown theater lobbies. Their programs are listed as Kentucky Healing Springs Mineral Water Program.

Big Yank Contest Winners Will Be Chosen Thursday

The Big Yank radio vaudeville circuit brings a special program of musical entertainment to WKRC listeners Thursday night (June 4) at 7:15. Big Yank, cowboy announcer, will tell all about the winners in the contest he announced several weeks ago.

"Clara" is Only Wife in Girls' Trio

"Clara" is the only married member of the "Clara, Lu and Em" trio heard over WLW and an NBC network every Thursday, Friday and Saturday, at 9:30 p. m.



PHIL COOK

Phil Cook, "The Quaker Man," is radio's one-man-show. WLW carries his program every Wednesday and Friday at 6:30 p. m. Most radio fans are familiar with his "Okay, Colonel!"; those sidelights on the day's news which he presents to a chant beginning, "I See by the Papers . . ."; and the radio-comic-strip built around the characters of "Pop Dingle," his son, "Abner," and the city boy, "Eddie." Frequently listeners find it hard to believe that all the voices heard in these 15-minute acts emanate from the one throat of Phil, himself, but they do. In addition to the facile quality of his voice, the versatile comedian is also a composer, humorous writer, singer, guitar player, and artist.

Mass in B Flat Is Cathedral Hour Offering

Papal decrees limiting the length and number of variations permitted in certain parts of the Mass will be observed in the broadcast of Mercadante's "Mass in B Flat" during the Cathedral Hour at WKRC and the Columbia network at 3 o'clock Sunday afternoon (May 31).

The complete program follows:

- Professional: Faith of Our Fathers.....Whitehead Cathedral ensemble
- Mass in B Flat: Kyrie, Gloria Credo.....Mercadante Solo voices, choir, orchestra
- At the Offertory: My Home is in the Everlasting.....Earl Palmer Ave Verum.....Mozart Choir
- Ah, who can tell (Seven Last Words).....Mercadante Earl Palmer and Craze Callier
- Mass in B Flat: Sanctus: Hallelucias: Agnus Dei.....Mercadante Solo voices, choir, orchestra
- Praise Ye the Lord.....Raudegger Cathedral ensemble

Reardon, Titus to Play Recital Next Sunday Night

Casper Reardon, solo harpist of the Cincinnati Symphony Orchestra, and Parvin Titus, organist of Christ Church, will play a joint recital at WLW Sunday, May 31, at 6 p. m.

Both men are members of the artist faculty of the Cincinnati Conservatory of Music and are being presented by the institution. The Conservatory will have the 6 o'clock period every Sunday night and will present others of its artist faculty, all of whom are nationally and internationally celebrated musicians.

Heretofore the Conservatory has had the period every other Sunday night, alternating with students of the College of Music of Cincinnati.

Old Maestro

Ben Bernie, the "old Maestro" himself, is master of ceremonies in the Phoenix Hosiery program WLW broadcasts by electrical transcription on Wednesday nights at 8:30. Bernie's orchestra plays and he cracks wise.

Ruth Etting

(Continued from page 1)

ment—radio, the stage, phonograph recordings and talking pictures. Ambitious to be a clothes designer (now one of the best-dressed women on the stage), she went to Chicago and enrolled at the Academy of Fine Arts. She ran out of money before she finished her course and turned to the stage for part-time work.

Paul Ash, orchestra leader, gave her a chance to sing at the Oriental Theater and she made good there, as did Helen (boop-ooop-a-doop) Kane. Night club appearances further paved the way for her jump to the Broadway stage. She played in two editions of Ziegfeld's "Follies," in "Whoopee" with Eddie Cantor and in "Simple Simon" with Ed Wynne. Recently she's been on a vaudeville tour, with time out for talking shorts for Paramount. Incidentally, her records are said to sell more than those of any other blues singer.

2½ Miles Per Gag!

Hink and Dink, end men of the Cotton Queen Minstrels at WLW (Thursday at 10:30 p. m.) are much-travelled radio entertainers. They live at Oxford, Ohio, forty miles from Cincinnati and WLW. In the four years they have been broadcasting they figure they have driven about 12,500 miles to and from their radio programs. They say they have used a little more than 5000 jokes on the air in that time. In other words, they have broadcast one joke for every two and a half miles of traveling.

Perfect Hostess

How to be a perfect hostess will be revealed by Mrs. Lutyne M. Sohngen, social hostess of the Hotel Gibson, in 13 weekly talks at WLW at 9:15 on Friday mornings, beginning June 5. Mrs. Sohngen created her position with the Cincinnati hotel with the idea of bringing to social affairs at the hotel the charm and individuality of a perfect hostess in her own home. Her first three talks are "Outstanding Points in Personality," "Making the Home Attractive," and "Hot Weather Luncheon and Dinner Suggestions."

Fashion Talk

Fashion talk by the editors of Vogue Magazine is relayed via NBC to WCKY every Thursday morning at 10:30.

WFBE Broadcasts Two Red Baseball Games This Week

Two baseball games are on WFBE's card of entertainment this week.

The Parkway station will broadcast the games between the Cincinnati Reds and Philadelphia direct from Redland Field on Tuesday afternoon (June 2) at 2:45 and on Thursday afternoon (June 3) at the same time.

Harry Hartman, popular sport announcer, will be at the microphone.

Earl Fuller



Perhaps you didn't know that Earl Fuller, managing director of Station WFBE, is internationally known as the "Daddy of Jazz," having directed the first syncopated orchestras on Broadway.

Perhaps you didn't know, either, that Fuller started on the road to musical success such bright young orchestra leaders as Ted Lewis, Johnny Hamp, Ted and Art Weems, Eddie Peabody, Irving Aaronson, Bennie Selvin, Rudy Wiedloff, and a score of others.

His 18-piece dance orchestra, which WFBE broadcasts twice each night, beginning on Decoration Day will be picked up from Fuller's, on Reading Road, where they will play during the summer.

Sanderson-Crummit

"Isn't It Wonderful," from "Oh, My Dear"; "Loving You the Way I Do," and "I'm All Bound 'Round With the Mason-Dixon Line" will be vocal duets to be sung by Julia Sanderson and Frank Crummit during the broadcast of the Blackstone Plantation program from NBC to WCKY and WLW Thursday (May 28) at 8 p. m.



"DADDY AND ROLLO"

"Daddy and Rollo," presenting a typical American business man trying to answer his young son's innumerable questions, are heard over WKRC and a Columbia chain every Tuesday, Wednesday and Thursday, at 6:45 p. m. J. P. MacEvoy, famed author of "Show Girl," and creator of the comic-strip, "Dixie Dugan," writes this series of 15-minute sketches, depicting the amusing situations which arise from a boy's persistent interrogations of his father. Nick Dawson and 11-year-old Donald Hughes have the title roles.

Radio Astrologer Fails to Foretell Police Reaction to his Broadcasts; Lands in Court After Week on WKRC

What has become of "Dr." Alla Regeh, 31-year-old astrologer of Pittsburgh, who for slightly more than a week forecast future events in broadcasts from Station WKRC?

His strange "death" has been puzzling the station listeners ever since. Truth of the matter is that Regeh was arrested for practicing astrology without a license, after two city detectives appeared at the station to listen to his broadcast while two others made a shorthand record of his talk while listening at a downtown radio receiver.

"When I first arrived in Cincinnati I submitted my proposition to Maj. E. D. Kirgan, chief of detectives, and Col. William Copeland, chief of police," Regeh said. "Both informed me I need only take out an occupational license, which I did immediately."

Arraigned in Police Court, "Dr." Regeh refused to obtain counsel. Because there is no license provided for the practice of astrology, he said he felt certain he could not have broken the law. Judge George E. Tebbis fined him \$100 and costs and gave him a suspended sentence of three months in jail. Regeh paid the fine and left for New York to resume his broadcasts there.

"Dr." Regeh (whose real name is Charles Lawrence Nelson) made this statement for readers of RADIO DIAL:

"I have been in this line of work for more than 12 years and much of that time I have been broadcasting. I have written seven books on astrological subjects.

"The City Prosecutor even admitted to me that he didn't know what the science of astrology or horoscopes are. When I asked them about Evangeline Adams and Lorna Fantin, both of whom broadcast similar material from New York through stations WKRC and WLW, they told me that these people were outside their jurisdiction and that they could do nothing about them.

"When I pointed out that a Cincinnati newspaper is giving away printed horoscopes to its readers, I was told that the city officials were not interested in prosecuting.

"My talks and my hooks are based on science. I am in no sense a 'mind reader' or anything like it. I am an ordained minister of the Church of Infinite Science in San Diego, California, a graduate of two colleges and a member of the National Astrological Association."



GEORGIA BACKUS

Dramatic Director of the Columbia Broadcasting System is the title acquired recently by Miss Georgia Backus. That title is a milestone marking a brief but remarkably interesting career.

Born in Columbus, Ohio, Georgia was reared in the tradition of the theatre. She was named after an uncle, George Backus, who is still remembered as the original Professor in "Way Down East." Her grandfather had built and managed a famous wax museum, and her mother was a concert singer.

At fourteen Georgia's talent gained her a job in a local stock company; at eighteen she was touring Ohio as manager and leading lady of "Strollers," the Ohio State University dramatic organization. She attended Smith College, as well as Ohio State, deserting both for the stage.

While she struggled with small parts in New York productions, Georgia occupied her spare time writing plays and short stories, but parts with road companies and a hasty decision to take a trip abroad stopped that for a while. Returning to New York from Europe on a freighter, broke, Georgia was offered a radio job through a shipboard acquaintance. Out of sheer desperation, she took the job.

Soon Georgia was writing, directing and acting radio drama. Her varied experience and versatile talents caused her superiors to name her director of dramatics for the Columbia chain. She still acts, writes and directs.

Horton's Band Greets the Dawn

What is believed to be the first Cincinnati dance band to go on the air at so early an hour as 6:30 a. m. is Murray Horton's Orchestra, now heard over WLW daily, except Sunday, from that hour until 7:45 a. m. Every fifteen minutes during this novel program Robert Burdette, popular physical education instructor, broadcasts setting-up exercises.

Russian Tragedy Is Frazier Hunt's Story on June 2

In the wastes of Northern Siberia, Frazier Hunt, war correspondent, witnessed a tragedy in the human life of a Russian peasant that will be the theme of his story in the Chevrolet Chronicle WLW will broadcast by electrical transcription Tuesday, June 2, at 9:30 p. m.

You will find complete radio programs

Falling Cotton Market Keeps Quartet on Air

As long as cotton sells for seven cents a pound in Georgia, and phonograph records are still 75 cents each, the Four Skillet Lickers of WCKY "reckon" they will continue to broadcast and make records instead of going back to their cotton planting.

Since they started to record their old Southern tunes and mountain songs eight years ago, several million of their 300 Columbia records have been sold.

Riley Puckett, who plays the guitar and banjo and sings Southern songs with the Skillet Lickers, is blind.

Local RKO Acts Off Air Until End of Summer

No more RKO vaudeville acts from the Albee in Cincinnati for WLW this summer. Sunday, May 24, was the last date for the 8:45 Sunday night program. Al Lever, Albee manager, says the acts will be available in the fall. RKO New York office says, "No broadcasting in the summer."

Marimba Serenaders

Three marimbas (overgrown xylophones), a guitar and a bass viol play at WCKY every Friday night at 6:15 as Eilerman's Marimba Serenaders. Eilerman's Songstress, on the same half hour, is a former musical comedy star.

FRIDAY May 29

WCKY (202 m.—1490 kc.)

- A. M.—
6:00—Kentucky Good Morning.
6:30—God's Bible School.
7:30—Cheerio (NBC).
8:00—Early Morning Dance.
9:00—Theroidin.
9:15—My New Kentucky Home, Jetta Crane.
9:45—Josephine Gibson's Food Talks (NBC).
10:00—Dance Melodies.
10:30—Classic Hour.
11:00—Musical Novelties.
11:30—Mountain Melodies.
Noon—Popular Dance Times.
P. M.—
12:30—Live Stock Reports.
12:35—Luncheon Concert.
1:00—Sign off.
1:45—Red Riding Hood.
3:35—Ayers Sport Flash.
6:00—Amos 'n' Andy (NBC).
6:15—Eilerman's Marimba Serenaders.
6:45—Bill and Bob.
7:00—Hugh Cross.
7:15—Herbert DeFord, tenor.
7:30—Earl Arnold's Orchestra, Lookout House.
8:00—Intervoven Pair (NBC).
8:30—Francis Behner, Mildred Myers.
8:45—Wally, the Radio Clown.
9:00—Armstrong Quakers (NBC).
9:30—Benson's Band.

WFBE (250 m.—1200 kc.)

- A. M.—
7:00—Voices at Dawn.
7:15—Radio Circus.
7:30—Classified Directory.
7:45—Radio Circus.

Friday, May 29

- 8:00—Eighth and Walnut Garage.
8:15—Mountain Valley Greetings.
8:40—Bacea Coal and Iron Program.
8:45—Magneool Program.
9:00—The Islanders.
9:15—Radio Circus.
9:30—Light Opera.
9:45—Seaman Furniture Program.
10:00—Tid-Bits, Corinna C. Curran.
10:05—League of Independents.
10:20—Princess Garment Program.
10:35—Radio Circus.
10:50—Polar Ray Health Talk.
10:55—Simper Time Announcement.
11:00—Sherwin-Williams Program.
11:15—Jake Tennenbaum Program.
11:30—Friendly Wall Paper Program.
11:45—Paul Electric Program.
Noon—Otto Grau Piano Recital.

- P. M.—
12:15—Radio Circus.
12:30—Fuller Program.
12:45—Bellonby Melodies.
1:00—Zolvo Program.
1:15—Vandeville.
1:30—Radio Circus.
1:45—Cook Upholstery Program.
2:00—Afternoon Melodies.
2:15—"The Home Finder."
2:30—Radio Circus.
3:00—Crown Furniture Program.
3:15—Union Mutual Life.
3:30—Fuller House Party.
4:00—Organ Recital.
4:15—Reds vs. St. Louis.
5:45—Lyric Hour.
6:15—Berning Ford Program.
6:30—Milner Musicale.
7:00—Earl Fuller's Orchestra.
7:30—Hartman's Sport Review.
7:38—Calliope Notes.
7:45—Novelty Notes.
8:00—Lucky Boys.
8:15—Chicago Market Program.
8:30—Camel Cigars.
8:45—Champion Sparkers.
9:00—Evening Chimes.
9:15—Radio Circus.
9:45—Musical News Reel.
10:00—Shoppers' Hour.
10:15—Mountain Valley Varieties.
10:30—Radio Circus.
10:45—Fuller's Orchestra.
11:15—11:30—Slumber Music.

WKRC (545 m.—550 kc.)

- A. M.—
6:45—God's Bible School; Sunrise Worship.
7:45—Traxel Galleries (Gruen Time).
8:00—Starr-Freeze Melodies.
8:15—Pharis Program.
8:30—Sweethearts of the Air (CBS).
8:45—The Old Dutch Girl (CBS).
9:00—OXOL Feature (CBS).
9:15—Consolidated Merchants' Program.
9:45—Steinharter's Live Stock Quotations.
9:45—Don and Betty (CBS).
10:00—Emily Post Camy (CBS).
10:15—Winifred Carter, Cooking Travelogue (CBS).
10:30—Commonsense for Mothers (CBS).
10:45—Ivory Snow, Heler Horne (CBS).
11:00—Woman's Hour.
11:28—Time and weather.
11:30—Classified News Program.
Noon—Wurlitzer Hour.

- P. M.—
12:30—Cincinnati Merchants' Program.
1:00—Pabst-ett Varieties (CBS).
1:15—Art Dry Cleaners.
1:30—Madame Flor-enz.
1:45—Studio Feature.
2:00—Louis A. Noelcke, Salon Orchestra (2:00 Sports Flash).
2:30—Queen City Rug Makers.
2:45—God's Bible School.
3:00—Julia Hayes.
3:30—Resume Studio.
3:45—Wni. F. Grassmuck Program.
4:00—Light Opera Gems (CBS); (4:00 Sports Flash).
4:15—Vita-Dry Program.
4:30—A. L. Fink Program.
5:00—John Scherz-Winegar's Barn Orchestra (CBS); (5:00 Sports Flash).
5:15—Meyer Paint Program.
5:30—Magic Mattress Man.
5:45—Babes of Radio, Huh Clothing Company.



WEBER AND FIELDS

Most famed of all "Dutch" comics, Joe Weber and Lew Fields now appear as featured entertainers of the Webster hour, heard over WSAI and an NBC network every Saturday, at 7 p. m.

Friday, May 29

- 5:59—Burke Weather Forecast.
6:00—Kate Smith and Her Swanee Music (CBS); 6:15 Mr. Good).
6:15—Stocks, Cohl & Tyree.
6:17—Time and Weather.
6:28—Studio (Lewis Medicine, Title Guarantee, Coney Island).
6:30—Eureka Baseball Scores.
6:25—Sports Review.
6:30—Red Goose Adventures (CBS).
6:45—Confessions of a Racketeer (E. T.).
7:00—Arthur Provor's Crema Military Band (CBS).
7:15—The Barbasol Program (CBS).
7:30—The Dutch Masters (CBS).
8:00—True Story Hour (CBS).
9:00—Van Heusen Program (CBS).
9:30—The March of Time (CBS).
10:00—Fletcher Henderson and His Orchestra (CBS).
10:15—Peter Paul Limericks.
10:20—Gruen Answer Man (E. T.).
10:25—Hanny Feet.
10:30—Coney Island Dance Orchestra.
11:00—Time and Weather (Mr. Good).
11:03—Sports Review.
11:08—Jacques Renard and His Orchestra (CBS).
11:30—Nocturne (CBS).
11:45—Blackberry Dudes.
Midnight—The Barge Dance Orchestra.

WLW (428 m.—700 kc.)

- A. M.—
6:00—International Fiddlers.
6:20—Bulova Time.
6:30—Gym Classes.
7:45—A. & P Program (NBC).
8:00—Bulova Time.
8:01—Jim and Walt, harmony.
8:15—Organ, Arthur Chandler, Jr.
8:30—Morning Devotions.
8:44—Bulova Time.
8:45—Miracles of Maenolia (NBC).
9:00—Ray Perkins (NBC).
9:15—Famous Recipes.
9:30—"Roses," Addie Reuter.
9:45—Premium Man.

Friday, May 29

WSAI (225 m.—1330 kc.)

- A. M.—
8:00—Gene and Glenn (NBC).
8:15—Campbell Soup Orchestra (NBC).
8:45—Records.
9:00—Organ Program.
9:15—Records.
9:30—National Home Hour (NBC).
10:00—Hawaiian Serenaders (NBC).
10:30—Realities of Romance (NBC).
11:00—Records.
11:30-11:45—Seger Ellis, songs.
P. M.—
12:50—Live Stock Reports.
2:00—Woman's Radio Review (NBC).
3:00—Edna Wallace Hopper (NBC).
3:15—Records.
3:45—Organ Program.
4:30—Moore Paint Program (NBC).
4:45—Records.
5:00—Poems, Harry Holcombe.
5:15—Don Becker, ukulele.
5:30—The Gossipers (e. t.).
5:45—Black and Gold Orchestra.
6:00—Organ Program.
6:30—Alice Richard.
6:45—Records.
7:00—Cities Service Orchestra.
8:00—Cluquot Club (NBC).
8:30—Pond's Afternoon Tea (NBC).
9:00—Kodak Week-End Hour (NBC).
9:30—RKO Theater of the Air (NBC).
10:00—Busse Orchestra, Castle Farm.
10:30-11:00—Hotel Gibson Orchestra.

SATURDAY May 30

WCKY (202 m.—1490 kc.)

- A. M.—
6:00—Kentucky Good Morning.
6:30—God's Bible School.
7:30—Cheerio (NBC).
8:00—Early Morning Dance.
9:15—My New Kentucky Home, Jetta Crane.
9:45—Kentucky Belle's Kiddie Club.
10:30—Classic Hour.
11:00—Musical Novelties.
11:30—Mountain Melodies.
Noon—Popular Dance Melodies.
P. M.—
12:30—Live Stock Quotations.
12:35—Luncheon Concert.
1:00—Sign off.
1:45—Melody Men.
5:55—Ayers Sport Flash.
6:00—Amos 'n' Andy (NBC).
6:15—Tastyest Jesters (NBC).
6:30—Buddy Ragamuffins.
7:00—Hill Billy Kid.
7:15—Medley Five.
7:45—Earl Arnold's Orchestra, Lookout House.
8:15—Al Miller and his Fiddlers.
8:45—Little Red Riding Hood.
9:00—Cneko Club (NBC).
9:30—Hugh Cross, mountain ballads.
9:45—Hilo Serenaders.

WFBE (250 m.—1200 kc.)

- A. M.—
7:00—Voices at Dawn.
7:15—Radio Circus.
7:30—Classified Directory.
7:45—Radio Circus.
8:00—Shoppers' Hour.
8:15—Mountain Valley Greetings.
8:30—Bacea Coal and Iron Program.
8:45—Magneool Program.
9:00—Dance Melodies.
9:15—Radio Circus.
9:30—Serenade.
9:45—Kleeman Furniture Program.
10:00—Breivites.
10:05—League of Independents.
10:20—"The Home Finder."
10:35—Radio Circus.
10:50—Polar Ray Health Talk.
10:55—Simper Time Announcement.
11:00—Sherwin-Williams Program.
11:15—Tennenbaum Program.
11:30—Friendly Wall Paper Program.
11:45—Paul Electric Program.
Noon—Grau Piano Recital.

Friday, May 29

- 10:00—Island Serenaders.
10:30—Live Stock Reports.
10:40—Vocal Ensemble.
11:00—Organ, Instrumental soloist.
11:15—Swift Program (NBC).
11:30—Piano and vocal solos.
11:45—River; Time.
Noon—Tuxedo Fiddlers.

- P. M.—
12:15—Bulova Time.
12:16—Hotel Gibson Orchestra.
12:49—Live Stock Talk.
12:50—Live Stock Reports.
1:00—Farm and Home Period (NBC).
1:30—Salt and Peanuts.
1:40—Market Reports.
1:45—Weems Orchestra, Netherland Plaza.
2:15—Village Rhythmeter.
2:30—Chicago Serenade (NBC).
3:00—Jim and Walt, harmony.
3:15—Radio Guild (NBC).
4:15—Ramona, piano, songs.
4:30—Raymond Mitehen, Mills Brothers.
5:00—Words and Music.
5:20—Bulova Time.
5:30—Old Man Sunshine.
5:45—Lowell Thomas (NBC).
6:00—Amos 'n' Andy (NBC).
6:15—Boseul, Madame Alda (NBC).
6:30—Phil Cook (NBC).
6:45—WLW Highlights.
7:00—Man From Nestle's (NBC).
7:35—Hotel Gibson Orchestra.
7:45—Sterling Iack, songs, piano.
8:00—Hotel Gibson Orchestra.
8:15—Singin' Sam.
8:30—Hoosier Editor.
8:45—Armour Program (NBC).
9:00—Armstrong Qual'ers (NBC).
9:20—Clara, Lou and Em (NBC).
9:45—Glenn Sisters, Ramona.
10:00—Kingtaste Sonneters.
10:30—Variety.
10:45—Bob Newhall, Sport Slices.
10:58—Estate Weather Man.
11:00—Weems Orchestra, Netherland Plaza.
11:15—Glenn Sisters, Ramona.
11:30—Busse Orchestra, Castle Farm.
Midnight—Hotel Gibson Orchestra.
A. M.—
12:30—Otto Gray's Coughin Band.
1:00-1:30—Weems Orchestra.

of all local stations here each week

Saturday, May 30

- P. M.—
 12:15—Radio Circus.
 12:30—Fuller Program.
 12:45—Bellonby Melodies.
 1:00—Zelva Program.
 1:15—Murphy & Goebel Program.
 1:30—Radio Circus.
 1:45—Cook Upholstery Program.
 2:00—Vaudeville.
 2:15—Memorial Day Program.
 2:45—Huller House Party.
 3:15—Union Mutual Life Program.
 3:30—Victor Herbert's Melodies.
 3:45—Catholic Telegraph.
 4:00—Dance Frolic.
 4:30—Radio Circus.
 4:45—Organ Recital.
 5:00—Lyric Hour.
 5:30—Crown Furniture Program.
 5:45—Race Auto & Radio Program.
 6:00—Dinner Music.
 6:15—Berning Ford Feature.
 6:30—Miller Musicale.
 7:00—Earl Fuller's Orchestra.
 7:30—Hartman's Sport Review.
 7:45—Barkern News.
 8:00—Luckey Boys.
 8:15—Radio Circus.
 8:30—Camel Cigars.
 8:45—Dance Frolic.
 9:00—Choppers' Hour.
 9:15—Radio Circus.
 9:45—Musical News Reel.
 10:15—Mountain Valley Varieties.
 10:30—Musical News Reel.

WKRC (545 m.—550 kc.)

- A. M.—
 6:45—God's Bible School, Sunrise Worship.
 7:45—Ray and Bob (Gruen Time).
 8:00—Madame Flor-enz.
 8:15—Morning Moons (CBS).
 8:30—Home Furniture Company, The Round Towners (CBS).
 8:45—Saxel Galleries.
 9:00—Classified News Program.
 9:30—Consolidated Merchants' Program.
 10:00—Studio Feature.
 10:12—Live Stock Quotations.
 10:14—Time and Weather (Burke).
 10:16—Woman's Hour.
 10:45—Starr-Freeze Melodies.
 11:00—Columbia Revue (CBS).
 11:15—Queen City Rug Makers.
 11:30—Julia Hayes.
 Noon—Vuriltzer Hour.
 12:30—Cincinnati Merchants' Program.
 1:00—Studio Feature.
 1:30—God's Bible School.
 2:00—Louis A. Noelcke Melotone Program (2:00 Sports Flash).
 2:30—A. L. Fink Song Recital.
 3:00—God's Bible School.
 3:15—Studio Feature.
 3:30—Reaume Studio.
 3:45—Wm. F. Grassmuck, Spanish Serenade (CBS).
 4:00—Pharis Program (4:00 Sports Flash).
 4:15—Vita-Dry Program.
 4:30—Vinegar's Barn Orchestra (CBS).
 4:45—Studio Feature (4:45 Kings-bury Ann).
 5:00—Kampf Artists (5:00 Sports Flash).
 5:15—Meyer Paint Program.
 5:30—Margie Matress Man.
 5:45—Babes of Radio, Hub Clothing Company.
 5:50—Burke Weather Forecast.
 6:00—Rhythm Ramblers (CBS); (6:15 Mr. Good).
 6:15—Studio.
 6:30—Eureka Baseball Scores.
 6:35—Sports Review.
 6:30—Studio.
 6:55—Stocks, Cohlé & Tyree.
 6:58—Time and Weather.
 7:00—Arthur Pryor's Cremona Military Band (CBS).
 7:15—Studio.
 7:25—Happy Feet.
 7:30—Junior Chamber of Commerce Program.
 8:00—Ben Alley, tenor (CBS).
 8:30—Your Neighbors.
 8:45—Studio Feature.
 9:00—C. A. C. Hank Simmon's Show Boat.
 9:45—Studio Feature.
 10:00—K. O. Hawaiians.
 10:15—Studio Feature.
 10:30—Coney Island Dance Orchestra.
 10:45—Time and Weather (Mr. Good).
 11:00—Sports Review.



AROUND THE SAMOVAR

These vocal and instrumental soloists participate in the Russian program known as "Around the Samovar," heard over WKRC and Columbia every Sunday at 10:30 p. m. Left to right they are: Valia Valentinova, contralto; Eli Spivak, baritone; Elena Kazanova, violinist, and Peter Biljo, director of the balalaika orchestra.

Saturday, May 30

- 11:08—Jack Denny and His Orchestra (CBS).
 11:30—Nocturne (CBS).
 11:45—Blackberry Dudes.
 Midnight—Barge Dance Orchestra.
 11:08—Jack Denny and His Orchestra (CBS).
 11:30—Nocturne (CBS).
 11:45—Blackberry Dudes.
 Midnight—Barge Dance Orchestra.

Come to our store for something that is sure to help you get PERFECT RADIO RECEPTION! This service

Absolutely FREE

For further announcements
 Tune in WKRC Every Day.
 2 P. M.; Sunday, 5:30 P. M.

LOUIS H. NOELCKE

Phone, Wahn. 7051
 955 E. McMILLAN

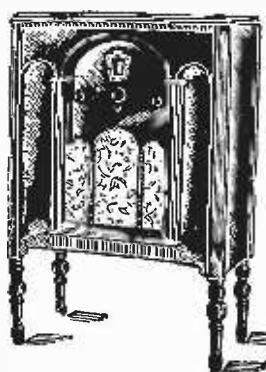
Saturday, May 30

- 5:01—Seektary Hawkins.
 5:30—Doctors of Melody.
 5:45—Lowell Thomas (NBC).
 6:00—Amos 'n' Andy (NBC).
 6:15—Tastevest Jesters (NBC).
 6:30—WLW Highlights.
 6:50—Baseball Scores.
 6:55—Seger Ellis, songs.
 7:00—Crosley Theater.
 7:30—Fuller Program (NBC).
 8:00—Crosley Saturday Knights.
 8:30—Domino Orchestra (NBC).
 9:00—String Trio, vocalists.
 9:30—Clara, Lou and Em (NBC).
 9:45—Horton Orchestra, Horseshoe Gardens.
 10:00—Club Sohio.
 10:30—Piano, tenor, guitar.
 10:45—Bob Newhall, Sport Slices.
 11:00—Estate Weather Man.
 11:02—Horton, Trio, vocalists.
 Midnight—Hotel Gibson Orchestra.
 12:30—Village Rhymer.
 12:45—The Doodsockers.
 1:00-1:30—Weems Orchestra.

- WLSW (428 m.—700 kc.)
- A. M.—
 6:00—International Fiddlers.
 6:25—Bulova Time.
 6:30—International Fiddlers.
 7:00—Organ.
 7:30—Southern Singers.
 7:45—A. & P. Program (NBC).
 8:00—Bulova Time.
 8:01—Guitar and songs.
 8:15—Junior Detectives (NBC).
 8:30—Morning Devotions.
 8:44—Bulova Time.
 8:45—American Food Talk.
 9:00—Lance Miniatures (NBC).
 9:30—Memorial Exercises, Valley Forge (NBC).
 10:30—Live Stock Reports.
 10:40—Horton's Orchestra.
 11:00—Old-Time Fiddlers.
 11:30—Swift Program (NBC).
 11:45—River; Time.
 Noon—Governmental Glimpses.
 P. M.—
 12:15—Bulova Time.
 12:16—Hotel Gibson Orchestra.
 12:45—Farm and Home Period (NBC).
 1:45—Sisters of the Skillet (NBC).
 1:30—Salt and Peanuts.
 2:00—Weems Orchestra, Netherland Plaza.
 2:15—Jin and Walt, harmony.
 2:30—Chicago Serenade (NBC).
 3:00—Glenn Sisters; Ramona.
 3:15—Pacific Feature Hour (NBC).
 4:00—Merry Men Quartet.
 4:30—Crosley Dealers' Hour.
 5:00—Bulova Time.

National Dairy Products has dropped Famous Trials in History (WSAI, Sunday, 9:15 p. m.) in favor of a program of orchestra music.

\$50 FOR YOUR OLD RADIO or PHONOGRAPH!



To readers of RADIO DIAL, we offer a special allowance of \$50 on your old radio or phonograph, to apply on the purchase of a new radio or electric refrigerator! Come in... and mention this ad!

NINE-TUBE PHILCO 1931

ELECTRIC REFRIGERATORS

The famous PHILCO balanced-unit radio... with PHILCO tone control, 9 tubes, Razor edge selectivity, Volume, distance and power without distortion. Easy terms. \$2 a week pays for this marvelous 9-tube set.

We also feature NORGE and MAJESTIC electric refrigerators... at the most reasonable prices in town. A small down payment, and...

A Whole Year to Pay!

FRANK'S

MUSIC and RADIO SHOP

"Cincinnati's Personal Interest Store"

1207 VINE STREET Just Above Twelfth

SUNDAY May 31

WCKY (202 m.—1490 kc.)

- A. M.—
 6:00—Kentucky Good Morning.
 6:30—God's Bible School.
 7:30—Early Morning Dance.
 8:45—Bob White.
 9:00—God's Bible School.
 10:00—Nomads (NBC).
 10:30—Hugh Croser Program.
 10:45—Hilo Serenaders.
 11:00—Sparklets (NBC).
 11:15—Hill Billy Kid.
 11:30—Little Red Riding Hood.
 11:45—Studebaker Champions (c. t.)
 Noon—Arabelle Chambers.
 P. M.—
 12:15—Skillet Lickers.
 12:45—Lena Pope, soprano.
 1:00—Sign off.
 5:45—Sacred Quartette.
 6:00—Superior Studios, music.
 6:15—Italian Serenaders.
 6:30—Kentucky Belle, contralto.
 6:45—Hill Billy Kid.
 7:00—Enna Jettick Melodies (NBC).
 7:15—College of Music, classics.
 7:45—Earl Arnold's Orchestra, Lookout House.
 8:15—Bob White.
 8:30—Arabelle Chambers.
 8:45—Westinghouse Salute (NBC).
 9:15—Floyd Gibbons (NBC).
 9:30—Little Red Riding Hood.
 9:45—Crooning Guitarist.

WFBE (250 m.—1200 kc.)

- A. M.—
 8:00—Voices at Dawn.
 9:00—Morning Concert.
 9:15—Radio Circus.
 9:30—Invitation to the Waltz.
 9:45—Watch Tower Program.
 10:00—Dry Ridge Springs.

Sunday, May 31

- 10:30-Gernan Program.
10:45-Berning Ford.
11:00-League of Independents.
11:15-The Home Finder.
11:30-Take Time to Be Beautiful.
11:45-Mountain Valley Greetings.
Noon-Radio Circus.
P. M.-
12:15-Kleeman Furniture Program.
12:30-Galvano & Cortez.
12:45-Fuller House Party.
1:00-Every Friday Jewish Hour.
1:00-Sleepy Nothings.
1:15-Mr. Lloyd Hoshaw.
2:30-Sundown Sereader.
2:45-Dance Frolic.
3:00-Travelogue, Joe Sweeney.
3:15-Hawaiian Bluebirds.
4:30-Peanut Boys.
4:00-Cincinnati Trade School.
4:10-Fuller, Inc.
4:30-George Eiche, Jr.
1:45-Rev. Chas. Hamilton.
5:00-Parkview Symphony Hour.
7:15-Mildred Eichler.
5:30-Radio Circus.
6:00-Payne Brothers and Herman Chitison.
6:15-Travelogue, Joe Sweeney.
6:30-Church Federation Hour.
7:00-Earl Fuller's Orchestra.
7:30-Harry Hartman's Sport Review.
8:00-First Baptist Church of Newport.
9:00-Scotland Yard.
9:30-Mountain Valley Varieties.
9:45-Earl Fuller's Orchestra.
10:15-Radio Circus.
10:30-Slumber Music.

WKRC (545 m.-550 kc.)

- A. M.-
6:45-10:00-God's Bible School-Sunrise Worship.
10:00-Watchtower Program (e. t.).
10:15-Jim Lightfield-Veteran's Civic Hour.
Noon-French Trio (CBS).
P. M.-
12:15-Oxol Feature (CBS).
12:30-American Legion Program.
1:30-Ballad Hour (CBS).
2:00-Gruen Old-Fashioned Garden.
3:00-Cathedral Hour.
4:00-Rev. Donald Gray Barnhouse (CBS).
4:30-Pastorale (CBS).
5:00-Louis A. Nolecke Program.
5:30-Twilight Reveries.
6:00-Dr. Klein's News Reels (CBS).
6:15-Studio.
6:20-Eureka Baseball Scores.
6:25-Sports Review.
6:30-Daddy and Rollo (CBS).
6:45-Studio.
7:00-Devils, Drugs and Doctors (CBS).
7:15-Kate Smith, Swanee Music (CBS).
7:30-Kaltenborn Edits the News (CBS).
7:45-Studio.
8:00-Coty Program (CBS).
8:30-Graham Page (CBS).
9:00-Grand Opera Miniature (CBS).
9:30-Fortune Builders (CBS).
9:45-Star Reveries (CBS).
10:00-Coney Island Orchestra.
10:30-Around the Samovar (CBS).
11:00-Sports Review.
11:07-Quiet Harmonies.
11:30-Nocturne (CBS).
Midnight-Barge Dance Orchestra.

WLW (428 m.-700 kc.)

- A. M.-
9:00-Church Forum-Rev. Walter A. King, Wyoming Baptist Church.
9:30-Witherspoon Chorus (NBC).
10:00-Bulova Time.
10:03-Organ, Arthur Chandler, Jr.
10:23-River Reports; Time.
10:30-Rochester Concert Orchestra (NBC).
11:30-Troika Bells (NBC).
Noon-Metropolitan Echoes.
P. M.-
12:30-Little Jack Little (NBC).
12:45-Grand Opera talk, Deems Taylor (NBC).
1:30-Yeast Foamers (NBC).
2:00-Crosley Theater.
2:30-Henry's Theatre.
3:00-William Orientates (NBC).
3:30-Over Jordan (NBC).
3:45-Your Eyes (NBC).
4:00-Rhymes with Reason.
4:30-Plantation Days.
5:00-The Roanios.
5:30-Hymn Time.
6:00-WLW Highlights.
6:30-Conservatory of Music.
6:55-Baseball Scores.



ADELE VASA-BEN ALLEY

Featured as "Sweethearts of the Air," Adele Vasa and Ben Alley are heard at 4.45 p. m., every Tuesday over WKRC and the Columbia network. Alley is a former Cincinnati, having begun his radio career in this city.

Sunday, May 31

- 7:00-Enna Jettick Melodies (NBC).
7:15-Collier's Radio Hour.
8:15-Bayuk Stag Party (NBC).
8:45-Ted Weems' Orchestra, Netherlands Plaza.
9:15-Variety.
9:30-Kellogg Slumber Music (NBC).
10:03-Murray Horton's Orchestra, Horseshoe Gardens.
10:15-Hed Higger Harmonies (NBC).
10:30-Crosley Concert.
11:00-Henry Busse's Orchestra, Castle Farm.
11:15-Village Rhythmer.
11:30-Henry This Orchestra.
Midnight-Ted Weems' Orchestra, Netherlands Plaza.

WSAI (225 m.-1330 kc.)

- P. M.-
12:30-"Grand Opera," by Deems Taylor.
2:00-Sermonette and Hymn Time.
2:30-Manhattan Guardsmen (NBC).
3:00-Dr. S. Parkes Cadman (NBC).
4:00-Pop Concerts (NBC).
5:00-Catholic Services (NBC).
6:00-Gold Seal (NBC).
6:30-RCA Victor (NBC).
7:00-Chase and Sanborn (NBC).
8:00-"Our Government," David Lawrence (NBC).
8:15-Atwater Kent (NBC).
8:45-Tedent Big Brother (NBC).
9:15-National Dairy (NBC).

MONDAY June 1

WKCY (202 m.-1490 kc.)

- A. M.-
6:00-Kentucky Good Morning.
6:30-God's Bible School.
7:30-Cheerio (NBC).
8:00-Boh White.
8:15-Early Morning Dance.
9:00-Theronoid.

Monday, June 1

- 9:15-My New Kentucky Home, Letta Crane.
9:45-Dance Records.
10:30-Classic Hour.
11:00-Musical Novelties.
11:30-Mountain Melodies.
Noon-Popular Dance Melodies.
P. M.-
12:30-Norris Brock.
12:35-Luncheon Concert.
1:00-Sign off.
5:45-Hill Billy Kid.
5:55-Ayers Sport Flash.
6:00-Amos 'n' Andy (NBC).
6:15-Tastyest Jesters (NBC).
6:30-Bill and Bob.
6:45-Little Red Riding Hood.
7:00-Hugh Cross.
7:15-Kentucky Belle.
7:30-Christian Glee Club.
8:00-Steve Bates.
8:15-The Voodoo Charm.
8:45-Ukelele Travelogue.
9:00-Stronberg Carlson (NBC).
9:30-U. of C. Quartet.
9:45-Wally, the Radio Clown.

WFBE (250 m.-1200 kc.)

- A. M.-
7:00-Voices at Dawn.
7:15-Radio Circus.
7:30-Classified Directory.
8:00-Eighth and Walnut Street Garage Program.
8:15-Mountain Valley Greetings.
8:30-Bacca Coal and Iron Program.
8:45-Magneool Program.
9:00-Hyde Park Community Program.
9:45-Kleeman Furniture Program.
10:00-Tid-Bits, Corinna C. Girran.
10:05-League of Independents.
10:20-Princess Garnment Program.
10:35-Radio Circus.
11:00-Polar Ray Health Talk.
11:50-Scherwin Williams Program.
11:15-Jake Tennenbaum Furniture Program.
11:30-Friendly Wall Paper Program, Chitison.
11:45-Paul Electric Program.
Noon-Otto Grau Piano Recital.
P. M.-
12:15-Radio Circus.
12:30-Fuller, Inc.
12:45-Bellony Melodies.

Monday, June 1

- 1:00-Zolvio Program.
1:15-Matinee.
1:30-Radio Circus.
1:45-Cook Upholstery Program.
2:00-The Home Finder.
2:15-Union Mutual Life Insurance Program.
2:30-Fuller Garden Party.
2:45-Memory Lane.
3:15-Payne Bros. and Herman Chitison.
3:30-Victor Herbert's Melodies.
4:00-Organ Recital.
4:15-National Protective Association.
4:30-Radio Circus.
5:00-Lyric Hour.
5:30-Bell Furniture Program.
5:45-Down South.
6:00-Murphy & Goebel Furniture Special.
6:15-Berning Ford.
6:30-Winter Cigars.
7:00-Xavier University Campus Rambles.
7:30-Harry Hartman's Sport Review.
7:45-Three Peanut Boys.
8:00-Lucky Boys.
8:15-Dry Ridge Spring Program.
8:30-Camel Cigars.
8:45-Radio Circus.
9:00-Jewish Commercial Hour.
10:00-Shopper's Hour.
10:15-Radio Circus.
10:30-Mountain Valley Varieties.
10:45-Radio Circus.
11:00-Slumber Music.

WKRC (545 m.-550 kc.)

- A. M.-
6:45-God's Bible School-Sunrise Worship.
7:45-Ray and Bob.
8:00-The Commuters (CBS).
8:15-Traxel Galleries.
8:30-Tony's Scrap Book (CBS).
8:45-The Old Dutch Girl (CBS).
9:00-Consolidated Merchants Program.
9:30-Mr. Fixit (CBS).
9:45-Classified News Program.
10:13-Live Stock Quotations.
10:15-The Madison Singers (CBS).
10:30-Unecda Bakers (CBS).
10:45-Time and weather.
10:48-Woman's Hour - Tremlette Jolly.
11:15-Homemaker's Talk by Julia Hayes.
11:45-Drink-Mor Program.
Noon-Wurlitzer Music Box Review.
P. M.-
12:30-Cincinnati Merchants Program.
1:00-A. L. Fink Program.
1:30-God's Bible School.
2:00-Melotone Program.
2:30-Studio Feature.
2:45-Star-Freeze Melodies.
3:00-Pharis Program.
3:15-Pueen City Rug Makers.
3:30-Resume Studio.
3:45-Hotel Roosevelt Orchestra (CBS).
4:00-God's Bible School.
4:15-Gypsy Music Makers (CBS).
4:30-The Dodge Twins (CBS).
4:45-La Gerardine Program (CBS).
5:00-Kamp Artists.
5:15-Meyer Paint Program.
5:30-Magic Mattress Man.
5:45-Cinti Trade School Musicale.
6:00-Current Events (NBC).
6:15-Stocks; Time; Weather.
6:20-Eureka Baseball Scores.
6:25-Sports Review.
6:30-Evangeline Adams, "Astrologer" (CBS).
6:45-Jas. J. Corbett, "Fight" (E. T.).
7:00-Prvor's Cremo Military Band (CBS).
7:15-The Barbasol Program (CBS).
7:30>Your Neighbors.
7:45-Old Warzburg Malt Program.
8:00-The Three Bakers (CBS).
8:30-An Evening in Paris (CBS).
9:00-Rohr, Burns Panatella Program (CBS).
9:30-Reltzchner Bright Lights.
9:45-Some Hit of the Week (E. T.).
10:00-Paul Tremain Orchestra (CBS).
10:15-Peter Paul Limerche.
10:20-Gruen Answer Man (e. t.).
10:25-Happy Feet.
10:30-Blachery Dudes.
10:45-Ozzie Nelson Orchestra (CBS).
11:00-Time; Weather; Sports.
11:08-Groover Olsen and his Music (CBS).
11:30-Nocturne (CBS).
Midnight-Barge Dance Orchestra.

Monday, June 1

- WLW (428 m.-700 kc.)
A. M.-
6:00-International Fiddlers.
6:29-Bulova Time.
6:30-Gym Classes.
7:45-A. & P. Food News (NBC).
8:00-Bradley Kincaid.
8:15-Organ Program, Arthur Chandler, Jr.
8:30-Morning Devotions.
8:45-Mirrales of Magnolia (NBC).
9:00-Hauskeeper Chats.
9:15-Beatrice Madie (NBC).
9:30-Musical Journey.
9:45-Wiufred S. Carter (NBC).
10:00-Syncopators (NBC).
10:30-Live Stock Reports.
10:40-Jim and Walt.
11:00-Vocal Ensemble.
11:30-WLW Stars.
11:45-River Reports; Time Signals.
Noon-Salt and Peamits.

P. M.-

- 16:16-Hotel Gibson Orchestra.
12:30-Live Stock Reports.
1:00-National Farm and Home (NBC).
1:30-Seger Ellis.
1:40-Market Reports.
1:45-Ted Weems' Orchestra, Netherlands Plaza.
2:15-Village Rhythmer.
2:30-Chicago Serenade (NBC).
3:00-Matinee Players.
4:00-Chats with Peggy Winthrop (NBC).
4:15-Glenn Sisters and Ramona.
4:30-Live Stock Reports.
4:40-Afternoon Revelers.
5:00-Music Treasure Box (NBC).
5:15-Mormon Tabernacle Choir (NBC).
5:30-Old Man Sunshine.
6:00-Amos 'n' Andy (NBC).
5:45-Lowell Thomas (NBC).
6:15-WLW Highlights.
6:30-Thermoid Brake Doctors (e. t.).
6:45-Baseball Scores.
6:50-Roxy's Gang (NBC).
7:30-Gold Medal Express (NBC).
8:00-Maytag Orchestra (NBC).
8:30-Retail Folks (NBC).
9:00-Vision-Airs.
9:30-Empire Builders (NBC).
10:00-St. Martin Church Opera Chorus.
10:30-Variety.
10:45-Bob Newhall, Sport Slices.
11:00-Wally Memory Hour.
Midnight-Henry Busse's Orchestra, Castle Farm.
12:30-Ted Weems' Orchestra, Netherlands Plaza.
1:00-Hotel Gibson Orchestra.

WSAI (225 m.-1330 kc.)

- A. M.-
8:00-Gene and Glenn (NBC).
8:15-Campbell Soup Orchestra (NBC).
8:45-Records.
9:00-McCormick's Old Time Fiddlers.
9:30-Jean Carroll (NBC).
8:45-Jerry Fay.
10:00-Blue Streaks (NBC).
10:15-Radio Household Institute (NBC).
10:30-Seger Ellis.
11:00-Sign off.
12:30-Live Stock Reports.
1:00-Sign off.
P. M.-
2:00-Woman's Radio Review (NBC).
3:00-Records.
4:00-Caskey Singers.
4:30-Records.
4:45-Sam Wilson, vocal solos.
5:00-Records.
5:15-Cecy Gordon; Gene Perazzo.
5:30-The Gossipers (e. t.).
5:45-Black and Gold Orchestra (NBC).
6:00-Records.
6:15-"The World Today," James G. McDonald (NBC).
6:30-Mrs. Lee Ach. poems.
6:45-Vocal Solos.
7:00-"How's Business?" Merle Thorpe (NBC).
7:15-Webster Program (NBC).
7:30-A. & P. Orchestra (NBC).
8:30-General Motors Program (NBC).
9:00-Adventures of Sherlock Holmes (NBC).
9:30-Cheramy Knights (e. t.).
10:00-Netherlands Plaza Orchestra.
10:30-Henry Busse's Orchestra, Castle Farm.

TUESDAY June 2

WCKY (202 m.—1490 kc.) 6:00—Kentucky Good Morning. 6:30—Sunrise Worship. 7:30—Cheerio (NBC).

WFBE (250 m.—1200 kc.)

A. M.— 7:00—Voices at Dawn. 7:15—Radio Circus. 7:30—Classified Directory.

P. M.— 12:15—Clean Up and Paint Up. 12:30—Fuller, Inc. 12:45—Bellony Melodies.

WKRC (545 m.—550 kc.)

A. M.— 6:45—God's Bible School. Sunrise Worship.



HELEN OELHEIM

Helen Oelheim, soprano, sings on the Dutch Masters program, heard over WKRC and Columbia at 7:30 p. m. every Friday.

Tuesday, June 2

8:15—The Commuters (CBS). 8:30—Tony's Scrap Book (CBS). 8:45—Madam Flor-enz Beauty Program.

Noon—Wurlitzer Music Box Revue.

12:30—Cincinnati Merchants' Program. 1:00—Patst-ett Varieties (CBS).

5:00—Harry Tucker's Orchestra (CBS). 5:15—Meyer Paint Program. 5:30—Magic Mattress Man.

Tuesday, June 2 WLW (428 m.—700 kc.)

A. M.— 6:00—International Fiddlers. 6:30—Gym Classes. 7:45—A. & P. Food News (NBC).

P. M.—

12:16—Hotel Gibson Orchestra. 12:50—Live Stock Reports. 1:00—National Farm and Home (NBC).

Tuesday, June 2

8:15—The Commuters (CBS). 8:30—Tony's Scrap Book (CBS). 8:45—Madam Flor-enz Beauty Program.

Noon—Wurlitzer Music Box Revue.

12:30—Cincinnati Merchants' Program. 1:00—Patst-ett Varieties (CBS).

WSAI (225 m.—1330 kc.)

A. M.— 8:00—Gene and Glenn (NBC). 8:15—Campbell Soup Orchestra. 8:45—Records.

P. M.—

12:50—Live Stock Reports from Prod. Coop. Comm. Assn. 1:00—Sign off. 2:00—Woman's Radio Review (NBC).

WEDNESDAY June 3

WCKY (202 m.—1490 kc.)

A. M.— 6:00—Kentucky Good Morning. 6:30—God's Bible School. 7:30—Cheerio (NBC).

P. M.—

12:30—Live Stock Reports. 12:35—Luncheon Concert. 1:00—Sign off. 1:05—Hill Billy Kid.

WFBE (250 m.—1200 kc.)

A. M.— 7:00—Voices at Dawn. 7:15—Radio Circus. 7:30—Classified Directory. 8:00—Shoppers' Hour.

Noon—Otto Grau Piano Recital.

12:15—Radio Circus. 12:30—Fuller, Inc. 12:45—Bellony Melodies. 1:00—Zolvo Program. 1:15—Matinee.

WKRC (545 m.—550 kc.)

A. M.— 6:45—Sunrise Worship. 7:15—Ray and Boh.

Vallee's Vocal Twin Confuses Campbell Fans

That's not Rudy Vallee you hear singing with the Campbell Soup Orchestra through WSAI and other NBC stations at 8:15 every morning except Sunday.

Detroit Symphony, Edgar A. Guest On Sunday Hour

The Entrance of the Gods to Valhalla, from Wagner's "Gotterdammerung," will be the feature of a concert by the Detroit Symphony Orchestra during the Graham-Page program at 8:30 p. m., Sunday (May 31) over the Columbia network and WKRC.

Ace Brigade Band Is New WKRC Dance Orchestra

Another nationally known dance group has been made available to Cincinnatians who get their dance music from their radio. It is Ace Brigade and his Virginians, who began broadcasting last week from Coney Island over WKRC.

Brigade comes on the air with the orchestra singing "Carry Me Back to Old Virginia." They are on the air every night except Monday. Consult your RADIO DIAL program for their appearances.

Wednesday, June 3

8:00—The Commuters (CBS). 8:30—Tony's Scrap Book (CBS). 8:45—The Old Dutch Girl (CBS).

Noon—Wurlitzer Music Box Revue.

12:30—Cincinnati Merchants' Program. 1:00—God's Bible School. 1:15—Studio Feature. 1:30—God's Bible School. 1:45—Salon Orchestra (CBS).

