

RADIO DIAL



Volume I, No. 27

WEEK ENDING NOVEMBER 26, 1931

Price 5c

FOOTBALL This Week

SATURDAY, NOV. 21

- 7:45 p. m. WTAM (1020 kc.). Ohio State-Illinois. Grant P. Ward and Robert Higgy announcing.
- 1:45 p. m. WSAI (NBC). Yale-Harvard. William Munday announcing.
- 2:30 p. m. WKRC (CBS). Notre Dame-Southern California. Ted Husing announcing.
- 3:15 p. m. WLW (NBC). Notre Dame-Southern California. Graham McNamee announcing.

THURSDAY, NOV. 26

- 1:30 p. m. WKRC (CBS). Pennsylvania-Cornell. Ted Husing announcing.
- 1:45 p. m. WLW (NBC). Nebraska-Pittsburgh. William Munday announcing.
- 1:45 p. m. WSAI (NBC). Pennsylvania-Cornell. Graham McNamee announcing.
- 2:15 p. m. WFBE. University of Cincinnati-Miami University.

WKRC Broadcasts Union Station Ceremonies Friday

Governor White, Mayor Russel Wilson, officials of the railroads running into Cincinnati, and Henry Fillmore's band will be heard in the program celebrating the laying of the cornerstone of Cincinnati's new railroad station on Friday (November 20) with station WKRC broadcasting the dedication services from 3:45 p. m. until 5 o'clock.

Mme. Homer Will Sing Twilight Hour Concert

Madame Louise Homer, operatic contralto, will sing the General Electric Twilight program at 5:30 p. m. Sunday (November 23) on the NBC network including WSAI. Accompanied by her daughter Katherine, Mrs. Homer will sing Schubert's "Serenade," "Oh Promise Me," "My Heart at Thy Sweet Voice," from "Samson and Delilah," and "God Be With You 'til We Meet Again."

Kleiber Leaves Philharmonic After Sunday

Eric Kleiber has chosen a program entirely of Austrian and German works for his last concert this season with the New York Philharmonic Symphony which the Columbia network and WKRC will broadcast from 3:15 p. m. to 5 o'clock Sunday (November 22), the day before he sails for Europe to conduct for the Berlin State Opera.

The Sunday concert will include the Overture and Entr'acte from "Rosamunde" (Schubert); Two Screenades from "Symphony No. 7 in E Minor" (Gustav Mahler); German Dances (Beethoven); "Sinfonia Concertante" for solo violin, cello, oboe and bassoon (Haydn); and "Blue Danube Waltz" (Johann Strauss).

Philadelphia Symphony Plays Second Radio Concert Saturday

Beatrice Lillie



Beatrice Lillie, titled British comedienne (in private life Lady Peel) will make one of her infrequent radio appearances Wednesday (November 25) in the Vitality Personalities at 10 p. m. on the Columbia network including WKRC. She will be heard in several of the songs that brought her a tremendous following among American theatre-goers who saw her in "Charlot's Review," "This Year of Grace," and the "Third Little Show."

It is to be hoped that she'll sing "There are Fairies at the Bottom of My Garden," a piece she did in all seriousness when she was an infant prodigy making concert tours of Canada, and which Ethel Barrymore suggested was a perfect vehicle for La Lillie's delicate satirizing. An appearance in the Nestle program some time ago proved that Miss Lillie's light touch in burlesque is as amusing on the air as on the stage even though her one venture in motion pictures ("Are You There?") was not so kind to her talents.

WFBE Broadcasts Boxing Match From New York

Three boxing titles are at stake in the boxing match between Kid Chocolate and Tony Canzoneri, which WFBE will broadcast from New York at 9:30 Friday night (November 20), with Harry Hartman reporting the match. Hartman will get his information by leased wire direct from the ringside. The bout will decide the Junior Welterweight, the Junior Lightweight, and the Junior Light Heavyweight championships.

Stokowski Will Conduct Orchestra on Columbia Network in Program of Great German Classic Composers

Coming to the classical period in his six-concert survey of the history of music, Leopold Stokowski will conduct the Philadelphia Symphony orchestra in a program of Gluck, Haydn, Mozart and Beethoven, Saturday night (November 21) from 8:15 to 10 o'clock in the second of the full-length concerts broadcast direct from the Philadelphia Academy of Music under Philco sponsorship. WKRC will be part of the national Columbia network.

In the first concert, a month ago, Stokowski selected the works of composers he called "Pre-classical." This concert will present works by Gluck, the first great German operatist (Overture to "Alceste"); Haydn, the father of the symphony ("Symphony No. 13 in G"); and Mozart and Beethoven, the two composers who developed the "classical" forms to the highest pitch of perfection (Mozart: "Concerto for Harp and Flute," and Overture to "Don Giovanni"; and Beethoven: "Symphony No. 5 in C Minor").

During the intermission, Pitts Sanborn and Linton Martin, music editors, will give notes on the music and a description of the scene in the academy.

Bill Roper of Princeton To Speak Friday

Bill Roper, until this year head football coach at Princeton university, will speak in the Famous Coaches program at 10:30 Friday night (November 20) on the Columbia network including WKRC.

Roper always has been regarded as something rare in football: a coach who followed the profession purely for love of the game. Graduated from Princeton and a successful Philadelphia attorney, Roper's only excuse for deserting his office several months of the year was the thrill he found on the football field.

To WLW Program Subscribers

Beginning with last issue the WLW Program was combined with the RADIO DIAL. This means that subscribers to the WLW Program will receive a much more comprehensive program service, incorporating not only WLW programs but those of the broadcasting chains and other large stations as well. We believe that this change will meet with the approval of all our subscribers.

THE WLW PROGRAM.

Frances Williams



Singing two songs from her new Broadway show "Everybody's Welcome," Frances Williams, blondest of blonde comedienne will be guest entertainer with Nat Brusiloff's orchestra on the Nestle program at 8 p. m. Friday (November 20) on the NBC "blue" network including WKCY.

The show tunes are "Is Rhythm Necessary," a comedy song, and "As Time Goes By," a sentimental melody. She will send out her appearance with "Take Me Back to Manhattan," from her last season's success "The New Yorkers." Last Friday Oscar Shaw, leading man of "Everybody's Welcome," was the Nestle star.

Dan Beddoe Will Sing Six Times on Air from WKRC

Dan Beddoe, celebrated Welsh tenor, who is considered one of the greatest oratorio singers of the time, will be the soloist for six weeks in the new Alms and Doepeke program WKRC is broadcasting at 8:15 p. m. Sundays, beginning this week (November 22). Mr. Beddoe will be accompanied by the Music Hall organ, played by Howard Krell.

Complete Radio Programs for Greater Cincinnati and Network Key Stations Begin on Page 3

Congratulations

RADIO DIAL this week congratulates WKCY on its new schedule of full-time broadcasts which begin Friday (November 20). In the new periods from 1 p. m. to 3:45, WKCY has added many new NBC features to supplement its own studio programs. Other NBC programs new to the Kentucky station also appear on its schedules at other hours.

Egleston Works on Golden Touch for WLW Follies

Charles Egleston will take the part of King Midas in the Lavender Network skit of that title, scheduled for the Crosley Follies broadcast Saturday night at 8 o'clock on WLW. Charlie is working hard on his part and thinks by Saturday he will have mastered the old King Midas touch. He feels it will be a good trick even if it doesn't work.

John Holbrook Wins 1931 Radio Diction Medal

John W. Holbrook, New York NBC announcer, is winner of the 1931 radio diction medal of the American Academy of Arts and Letters. Hamlin Garland, chairman of the Academy's radio committee, said Holbrook's voice combined "best English and American English," and commended his "taste, pronunciation, grace and authority."

Holbrook, 25 years old, was born in Boston. NBC took him from WBZ there last May after he attained recognition, announcing national events originating in Boston.

National Oratorio Chorus Sings in Weems' Period

The National Oratorio Society with Reinald Werrenrath conducting, will begin its third successive season of weekly broadcasts over the NBC network including WSAI on Sunday (November 29) at 10:15 p. m., taking the place of Ted Weems' "Best Sellers" Program. The first concert will present Decms Taylor's musical setting to be called "The Highwayman" by Alfred Noyes, Werrenrath, accompanied by a women's chorus, and orchestra, will sing the baritone role which was written especially for him.

Weekly RADIO DIAL « PROGRAM JOTTINGS »»

Published every Friday by the Radio Dial Publishing Co., 22 East 12th St., Cincinnati, Ohio. Contents copyrighted.

Entered as second-class matter July 29, 1931, at the post office at Cincinnati, Ohio, under the Act of May 3, 1879.

NATALIE GIDDINGS, Editor E. E. HARRIS, Bus. Mgr.

VOL. I WEEK ENDING NOVEMBER 26, 1931 No. 27

AT LAST THE COMMISSION GETS HARDBOILED

Believe it or not, the Federal Radio Commission at last is getting hardboiled.

Those who have been following the vacillating career of broadcasting's governing body will understand the allusion to Ripley readily enough. And for the benefit of others it may be worth while to explain that until the past few weeks the F. R. C.'s record has been conspicuously chieffy for agile side-stepping.

In its administration, the F. R. C. has demonstrated the amazing ability to make mountains of molhills and molehills of mountains. The reasons are several and depressing, ranging all the way from Washington red tape to practical politics. At any rate, it is not trick to pin an indictment of spinelessness on the Commission.

But during the past few weeks the story is different; astonishingly different. For in that time the F. R. C. has ordered off the air no less than eight stations for the heretofore only euphonic reason of failing to serve the "public interest, convenience and necessity."

Moreover, these death warrants have a certain local interest. Among the eight condemned stations are WCHI and WJAZ, Chicago, which divide time with WCKY. Their passing gives the Covington transmitter free run of the 1490 kc. channel.

Of course, it is likely that the whole matter will be put through the slow-grinding mill of the courts. Some of the disillusioned bystanders doubtless will remark, too, that the Commission is only four years late making a start at separating the sheep from the goats.

Nevertheless, the recent executions look to be something more than just another passing fit of bad temper at Washington. The best reason for surmising that is the discernible anxiety among certain of the broadcasters about where the axe will fall next.

So maybe, after all its nimble ducking, the Commission finally has decided to get hardboiled. If it has, if moreover it stays hardboiled, and about the really important issues, the prospects for better broadcasting are decidedly better.

For—again believe it or not—there is one thing a station manager fears more than a commercial client's wrath; and that is the loss of his transmitting license.

Around the Dial

By THE DIAL TWISTER

Heartfelt thinks to the studio moguls for the munificent gift of Walter Danrosch and the NBC Symphonic Hour (WLW, Sunday at 1:15 p.m.). It's set at just the time that gives about all of us a chance to hear America's most beloved orchestra conductor. And as if that isn't boon enough, it's an old-fashioned 60-minute hour, with room for a full symphony. Result, a superb treat.

That new Weed Tire Chain program (WKRC, Wednesday at 10:15 p.m.) is something attractively different. A good mixed quartet in the sort of numbers that most of the bills pass up.

If you like a fresh slant on who's who and what's what, William Hard's Back of the News in Washington (WCKY, Tuesday at 7:45 p.m.) is a sure bet. His talks are better than political gossip.

And once in a while these pieces spoken into defenseless microphones turn out to be pearls of candor. For instance, the gem tossed off by one of Abe Lyman's "finds" the other evening. Quoth the fair discoverer: "Now I'm going to sing you one of the new hit songs, 'I Don't Know Why.' We can't think of a reason either."

The new Buick program (WSAI, Sunday at 9:45 p.m.) is a dead ringer for the old General Motors show. Which doesn't mean it's not enjoyable, of course. Just a family resemblance.

Have you noticed that Regal Radio Reproductions (WKRC, Friday at 9 p.m.) carefully omit the names of the imitations' originals? Maybe there's a reason.

You can get Seth Parker at WHAS (Sunday at 10:45 p.m.). For three weeks while Phillips Lord is on tour, there will be a substitute program called Seth Parker's Neighbors.

It would be interesting to know why the Collier people stopped broadcasting J. P. McEvoy's "Are You Listening?" There's such a substitute program as being embarrassingly realistic.

As you may have surmised, that Goodyear quartet is the Revelers!

Under another "nom de mike." They're also the Buick quartet. By this time Messrs. Melton, James, Dewey and Glenn have sung under many aliases than a rogue's gallery headliner can boast. But they're still one sweet foursome.

The Simenz Guardsmen have moved to WLW, Sunday at 5:30 p.m.

Andy's "repression" for depression is almost accepted usage by this time. Even Dr. Julius Klein started to say it the other evening.

Another feature for the youngsters, Uncle Olie and His Krenel Gang (WKRC, Monday and Friday at 5:30 p.m. and Wednesday at 5:15 p.m.). What's the difference between Olie and the rest of the air uncles who just dote on nieces and nephews? Well, he claims to be Scandinavian.

So Walter Winchell has been drafted as a pinch-hitter on the Lucky Strike program (WSAI, Tuesday, Thursday, Saturday at 10 p.m.). Coming on top of a sudden change in orchestras, this looks suspiciously like an admission that the Adam's Apple Hour" hasn't been wowing them. Maybe there's just an outside chance that a careful scrutiny of the blurb content might suggest something to the eagle-eyed program doctors.

WLW's Southern Singers have a woman as top tenor. And she's a good one.

The NBC is five years old this month. My, my, how tempus does fugit. It seems only a year or two ago that we dined uncasily through most of that four-hour inaugural program. Yes, four solid, very solid hours. But it's probably elephantine to bring that up.

That Columbia Concerts program (WKRC, Wednesday at 10:20 p.m.) is the real thing. Howard Barlow's good orchestra, and top-notch solo artists. Still, just bowing would you classify the subtle suggestion that these artists sound better in person, mind you, using radio to ease over the idea?

Friday, November 20

2:15 p. m. WLW (NBC). Charles Naegle, pianist, playing Schuman's "Concerto," will be the soloist with the Rochester Philharmonic Symphony.

4:15 p. m. WHAS (870 kc. NBC). An abridged version of Shakespeare's "Merchant of Venice" will be played by the Radio Guild.

8 p. m. WCKY (NBC). Frances Williams, comedienne and star of the new Broadway show "Everybody's Welcome," will be the guest artist in the Nestle program.

8:15 p. m. WLW. Musical Bridges is a concert orchestra program with fanciful continuity to lift it out of the class of the traditional concert.

9:30 p. m. WSAI (NBC). Irene Bordoni, pianist French musical comedy star, will sing "Save the Last Dance for Me," a new tune never before heard on the air, in her appearance as Pond's guest artist. Her other numbers are "She Didn't Say 'Yes' and She Didn't Say 'No,'" from the new "Cavendish Fiddle," and "If I Could Say to You in English What I Am Thinking of You in French."

10 p. m. WCKY (NBC). "The Life of Knute Rockne," a tone poem recently composed by Ferde Grofe, is to be repeated by Paul Whiteman's orchestra in the Paint Men program.

10:30 p. m. WSAI (NBC). Lou Holtz, musical comedy-vaudeville performer; Adelaide Hall, who calls herself "the crooning blackbird," and Sylvia Froos, vaudeville singer, will appear in the RKO Theater of the Air.

10:30 p. m. WKRC (CBS). Bill Roper, former head football coach at Princeton, makes predictions for Thanksgiving games in the Famous Coaches program.

Saturday, November 21

9 p. m. WLS (870 kc. NBC). The Chicago Civic Opera broadcast will be a part of Verdi's "Aida." Paul Alt-house, tenor, and Iva Pacetti, soprano, will sing the roles of Rhadamés and Aida. It will be Miss Pacetti's debut as an opera singer. "An Gordon, mezzo-soprano, will be heard as Amneris. The broadcast will include "Celeste Aida," and "Ritorna Vincitor," two of the best-known arias from the opera.

10 p. m. WKRC (CBS). "Lord and Lady Dusen-Berry," a farce comedy with moments of old-fashioned melodrama, will be played by the Hank Simmons' Show Boat Dramatic Company aboard the Maybelle. The play was written from "The Hair at Law" by George Coleman.

9:30 p. m. WSAI (NBC). Henry Hadley, noted American composer, will be guest conductor Monday night when the Parade of the States complements his native state, Massachusetts. One of the numbers will be "Chinese Suite," his own composition.

12 Midnight. WTAM (1020 kc.) Gene and Glenn's Song Shop which used to be one of their favorite programs on WLW has opened again and will be heard every Saturday from midnight until 1 a. m. Jake and Lena, the cash register, and all the other paraphernalia of the original act, have been retained for the Saturday night program. Gene and Glenn also appear on WTAM every night, except Saturday, at 7 p. m. as the Spang Bakers, and on the NBC network including WSAI at 8 a. daily.

Sunday, November 22

2:30 p. m. WCKY. The Covington Art Club's music department is beginning a new weekly music program with a half hour of songs by a chorus of 16 professional voices directed by Maurice Thompson. "In a Monastery" will be sung this week. The arrangement for four parts is said to be so unusual that several music publishers have asked to publish it.

5 p. m. WCKY (NBC). Dr. Harry Emerson Roadick's Sunday afternoon talk was the first afternoon feature

of the Kentucky station requested from NBC after being notified of permission to operate full time.

5 p. m. WSAI (NBC). Shura Cherkassky, pianist, will be featured on the NBC Artists' Service program in the absence of Sophie Braslav, who has been appearing recently.

5:30 p. m. WSAI (NBC). Madame Louise Homer, contralto, is the General Electric Twilight soloist.

8:15 p. m. WLW (NBC). Helen Keller, blind and deaf, will speak on Collier's Radio Hour.

9:30 p. m. WKRC (CBS). "The Late Captain Crow," a drama of pirates, hidden jewels, and mutiny, will be enacted during the "Romances of the Sea" program.

9:15 p. m. WLW (NBC). Clarence Budington Kelland, author of innumerable stories (including "Out of Bounds," currently running in the Ladies Home Journal), will be guest speaker on the Bayluc Stag Party. He will discuss "Crises in American History." His fiction characters are notable for their sparkling conversation, which augurs well for Kelland's microphone appearance.

Monday, November 23

11:30 p. m. WLW. WLW will salute the city of Denver, Colorado, during its "Fanfares" broadcast, with William Stoess conducting special arrangements of "Springtime in the Rockies," "Out Where the West Begins," and "Colorado Skies."

Tuesday, November 24

11:30 p. m. WLW. The Los Amigos Spanish broadcast is now on Tuesday night at 11:30 rather than on Friday. Crimelights has been scheduled for the Friday night, 11:30 spot.

Wednesday, November 25

10 p. m. WKRC (CBS). Beatrice Lillie, comedienne, will do several of her delicate burlesques in the last of the Vitality Personalities programs.

Thursday, November 26

8 p. m. WSAI (NBC). Helen Morgan, the piano-sitting Ziegfeld Gaiety star, will be Rudy Vallee's guest on the Fleischmann program. She will sing songs she sang in "Show Boat" and "Sweet Adeline," and in the Follies.

9 p. m. WLW. Works of Henry Hadley, American contemporary composer, will make up the Great Composer Concert Hour.

You Should Know—

Bob Newhall



Bob Newhall — or perhaps Colonel Robert De Sylva Newhall to you!

He likes checked suits and little kittens.

He sports a tiny reddish blond mustache. He wears his hat while he broadcasts—a dashback to his sports reporting days when he always wore a hat at work to keep the glare of flood lights out of his eyes.

His intimate knowledge of all

PARDON MY Imperkinsence!

Being Some Perky Palaver From the Programs of RAY PERKINS

Hi there, Radio Dialers!



Far be it from me to belittle a great national issue, but we're making all together too much hoopla and too doo about the "dunking" question. What does it matter whether people in our great country dip their cake and doughnuts in their coffee or eat them dry?

I asked Gertrude Glutz, our etiquette expert, if she ever dunked. "I dunk care if I do," she cried, tilting her head saucily. So I pushed her down an elevator shaft and haven't heard from her since.

But the so-called joys of dunking are as nauseating in comparison to an even more thrilling gastronomic practice. I refer to the fine old custom of Scrooping. The word "scrooping," our Research Department informs us, is derived from the two words, "scrapping" and "snapping." It denotes the process of wiping gravy off a plate with a piece of bread. The notion is this horizontal as compared to the vertical movement involved in dunking. A good, expert scrooper never gets gravy on his fingers, either, which is more than can be said of the nation's dunkers.

The Perkins Research Laboratories are working on a new type of super-absorbent bread that will be a great boon to plate scroopers. By incorporating a percentage of absorbent cotton in the batter we have developed a product that will hold more to the square inch. I am organizing a company to market the Perkins Super-Absorbent Bread, provided I can prevent my lawyers from getting all the gravy.

Down in Brazil they're promoting the use of surplus coffee to make engine fuel.

Shucks! The oil people up here have been trying to promote the same thing with their surplus.

Nevertheless they're having a terrible problem with their coffee in Brazil.

It keeps them awake nights whether they drink it or not.

The papers say a dollar is worth 15 per cent more than it was a year ago. The only trouble is that it's 75 per cent harder to get.

forms of athletics has been gained through 20 years as one of the country's best-known sport reporters and as an active participant in most of the sports he talks about in his mile-a-minute daily sport talks at WLW.

The ease for his portable typewriter is completely covered with hotel, steamship, railway labels of almost 40 foreign countries. He has traveled with the Cincinnati Reds and other major league teams on 19 spring training trips while sports editor of the defunct Commercial Tribune and other papers. He has crossed the Atlantic seven times and has traveled completely around the world. He has lived in Mexico City, and wrote newspaper articles from the Philippines during the uprisings there. On his last trip he covered 41,000 miles, stayed eight months, shot a leopard in the Sudan, bagged a 400 pound tiger in India, shot a chetal or spotted deer in the jungles of Ceylon, and caught an 18-foot crocodile.

Boswell Sisters Talk Turkey



Although the Boswell Sisters, Connie, Vet and Martha in that order left to right—are noted for their vocal harmonies, they can also talk turkey when the occasion arises. This occasion being Thanksgiving, the girls are picking out the bird that will grace the Boswell table on the festive day. They all plan to have a hand in cooking it for they have domestic talents too.

The Boswell Sisters broadcast on the Columbia network at 7:30 p. m., Monday, Wednesday, and Friday in the Baker Bar program. Connie has her own solo program at 6:45 p. m., Tuesday, and Thursday, and Saturday. WKRC will broadcast the Tuesday (November 24th) and Thursday (November 26th) periods this week.

Helen Keller Talks Sunday For Collier's

Helen Keller, blind and deaf since birth, will speak on Collier's Radio Hour at 8:15 p. m. with station WLW in the national NBC hook-up. Miss Keller's ability to talk is considered one of the marvels of personal achievement.

"Eternal Flapper" Stages Radio Variety Show

Not satisfied by rattling off beauty talks at a rate that out-Gibbons Floyd Gibbons, Edna Wallace Hopper will be mistress of ceremonies in the new Variety show she is broadcasting on the Columbia network and WKRC at 10 p. m. Sundays, Fanchon and Marco who have been stage producers for many years, are staging the radio show as their first venture into commercial radio production.

Wee Willie Robyn And Gypsies Sell Hairnets

Wee Willie Robyn, diminutive radio tenor, who eight years ago became a charter member of the famous Rosey's Gang, combining that work with concert work until the present time, will sing Auf Wiedersehen, from the beautiful operetta "Blue Paradise" during the new Venida program (designed to sell hair nets) to be heard over the Columbia chain and WKRC Sunday (November 22) at 1:45 p. m. He will be accompanied by Eucery Deutsch and his Gypsy Ensemble.

Music Hour Friday Includes Three Orchestra Pieces

Sorrow and happiness as expressed in music, and the uses of the oboe, English horn, and bassoon in orchestral numbers will be explained by Walter Damrosch in the Musical Appreciation hour at 11 a. m. Friday (November 20) on the NBC network, including WLW, WKCY, and WSAI. The symphony orchestra will play an excerpt from Dvorak's "New World Symphony," "Aida's Death" from Grieg's "Peer Gynt Suite," and the Intermezzo from Mendelssohn's "Midsummer Night's

WFBE Friday, November 20

- 2:30—Moods in Blue
- 3:00—With Lawrence Tibbets
- 3:15—Garden of Melody
- 3:30—Vine Street Pool Clinic
- 3:45—Bill Reibel's Cincinnati Panthea
- 4:15—Julius Monk
- 4:30—Afternoon Dance
- 4:45—Bertha Mathers and Mrs. A. Hahn
- 5:00—With the Band Masters
- 5:15—The Pirates' Club
- 5:30—Spirituals
- 5:45—Spirits Program
- 6:00—Little Blue Prince
- 6:15—Musical Comedy Nits
- 6:30—Julius Sein
- 6:45—Bernie Ford Travelogue
- 7:00—Dinner Dance Music
- 7:15—Post Question Box
- 7:30—Original Ibold Sport Review
- 7:45—Adele Apple
- 8:15—Newport Finance Program
- 8:30—Covington and Hersh (Harris)
- 8:45—Dry Ridge Health Hinta
- 9:00—Lucky Boys
- 9:15—Dance Fines and Fines
- 9:30—Wrestling Matches

WKRC (545m.—550 kc.)

- 6:45 A. M.—Sunrise Worship
- 7:45—Gladys Catron, Organist
- 8:00—Roland Gains Mountain Rangers
- 8:15—Grab Bag Boys
- 8:45—The Old Dutch Girl (CBS)
- 9:00—Na-Dees Not Water Neater
- 9:15—Super Maid Program
- 9:30—Consolidated Merchants' Program
- 10:00—Oxal Feature (CBS)
- 10:17—Woman's Hour—Tremletie Tully
- 10:45—Don and Betty (CBS)
- 11:00—Rhythm Kings (CBS)
- 11:15—Blue Moon Program (CBS)
- 11:30—Pyl Program
- 11:45—Jane Grey, Kampf Jeweler Artists
- Noon—Blackberry Dudes
- 12:15 P. M.—Christina Toura
- 12:30—The Old Dutch Girl (CBS)
- 12:35—Cincinnati Merchants' Program
- 1:00—Pabstette Varieties (CBS)
- 1:15—Julia Hayes, Nauschold Nints
- 1:45—Seyoul Program
- 2:00—Cincinnati Trade School Program
- 2:15—Burck-Bauer Organ Melodies
- 2:30—American School of the Air (CBS)
- 2:45—Grey Goggles Program
- 3:15—Columbia Salon Orchestra (CBS)
- 3:30—Grease-off Program
- 3:45—Laying of Union Depot Cornerstone
- 5:00—A. O. Rust—Nappy Feet
- 5:15—Potter's Shoe—Children's Stories
- 5:30—Uncle Ollie's Kream Gang (CBS)
- 5:45—Hub Clifton's Cornishy Musicale
- 6:00—Re-Nu—Pat Gillick, organist
- 6:15—Alex McQueen
- 6:20—Stocks: Cohlle and Tyree
- 6:25—Opera Review: Variety
- 6:30—Bert Lovia's Orchestra (CBS)
- 7:00—Wrigley—Myrt and Marge (CBS)
- 7:15—Crem—Byrd Crosby (CBS)
- 7:30—Baker Bros. and Sisters (CBS)
- 7:45—Cameo Quarter Hour (CBS)
- 8:00—R. B. Clothes—Grab Bag Boys
- 8:15—Singer's Song, Barbara Man (CBS)
- 8:30—March of Time (CBS)
- 9:00—Retail Radio Reproduction (CBS)
- 9:15—Liberty Magazine Program (CBS)
- 9:45—Pleasant Five Footnotes (CBS)
- 10:00—Shirley (CBS)
- 10:30—Talk by Football Coaches (CBS)
- 10:45—Christmas Tours
- 10:50—Kentucky World Tour
- 11:00—Groun Averson, Man
- 11:05—Weather; Sports Review
- 11:15—Pyl Program
- 11:30—Pat Gillick and Nis Gann
- Midnight—Ben Bernie Orchestra (CBS)
- 12:30—Ship's Cafe Orchestra (CBS)

Friday, Nov. 20

WCKY (202m.—1490kc.)

- 7:00 A. M.—Alarm Clock Melodies
- 7:30—Organ Reveries
- 8:00—Kentucky Mountaineer
- 8:15—Morning Devotions (NBC)
- 8:30—Cherico (NBC)
- 9:00—Wallace, Old and New
- 9:15—Tunes in Blue
- 9:30—Lebanon, O., Merchants
- 10:00—Ray Perkins (NBC)
- 10:15—Namilton, O., Merchants
- 10:45—Dance Tunes
- 11:00—Music Appreciation Hour (NBC)
- Noon—Phila's Program
- 12:15 P. M.—Luncheon Concert
- 12:25—Live Stock Market Report
- 12:30—Farm and Home Hour (NBC)
- 1:30—Cherniavsky's Orchestra
- 2:00—Popular Dance Tunes
- 2:30—Favorite Selections
- 3:00—Siesta Musicale
- 3:30—Novelty
- 4:00—Tuneful Topics
- 4:30—Pavote Selections
- 5:00—Les, Bosd and Joe
- 5:15—Medley Four
- 5:45—Lena Pope, soprano
- 6:00—Story Book Hour
- 6:30—Twilight Organ Memories
- 6:45—Ayers News Flash
- 7:00—Lomas 'n' Andy (NBC)
- 7:15—Cherniavsky's Orchestra
- 7:45—John Fielden
- 8:00—Nestle Chocolaters (NBC)
- 8:30—Earl Arnold's Orchestra
- 9:00—Interwoven Pair (NBC)
- 9:30—Cherniavsky's Orchestra
- 10:00—Paul Whiteman's Painters (NBC)
- 10:30—Clara, Lu and Em (NBC)
- 11:00—Vincent Lopez Orchestra (NBC)
- 11:15—Skillet Lickers
- 11:45—Cumberland Crooners
- 12:05—Part: Bright Saying's Orchestra
- 1:00 A. M.—Sundagers
- 1:30—Showboat Boys
- 1:45—Charlene
- 2:00—Nal-Hour Early Profile
- 2:15—Nedee's Nawaianans
- 2:45—Nokum Trio
- 3:00—Louie Ryder and Faye Tarvin
- 3:15—Sandra Trio
- 3:30—Nedee Brothers
- 3:45—Luelle Fox

WLW (428m.—700 kc.)

- A. M.
- 6:30 A. M.—International Fiddler
- 6:00—Physical Exercises
- 7:15—Happiness Kids
- 7:30—Arthur Caudier, Jr., organ
- 7:45—Jolly Bill and Jane (NBC)
- 8:00—Morning Devotions
- 8:15—Georgia Wildcats
- 8:45—Daisy Pickard (NBC)
- 8:45—Physical Exercises
- 9:00—Rumford School of Cookery
- 9:15—Town Crier Economy Names
- 9:30—Beautiful Thoughts (NBC)
- 9:45—Premium Hour
- 10:00—Live Stock: Pollyanna Talk
- 10:15—A. & P. Orchestra
- 10:30—Olton Goldbody (NBC)
- 10:45—Stocky Program
- 11:00—Music Appreciation Hour (NBC)
- Noon—Tuexedo Piddler
- 12:15 P. M.—Pat Barnes (NBC)
- 12:30—River; Flans; Markets
- 12:50—Live Stock Reports
- 1:00—National Farm and Home (NBC)
- 1:31—Bernie Cummins' Orchestra (NBC)
- 1:45—Ohio School of the Air
- 3:00—Mormon Tabernacle Choir (NBC)
- 3:15—Rochester Philharmonic (NBC)
- 4:00—A. & P. Orchestra
- 4:30—Dorothy Madelal Lucke
- 5:00—Words and Music
- 5:15—Los Vaqueros de Ramona
- 5:30—Old Man Sunshine
- 5:45—Little Orphan Annie (NBC)
- 6:00—Old Man Sunshine
- 6:15—The Chatter
- 6:30—Mail Pouch Program
- 6:45—Lowell (NBC)
- 7:00—Amos 'n' Andy (NBC)
- 7:15—Boscul Program (NBC)
- 7:30—Pampos Bridges of History
- 7:45—Old Radio Singers
- 8:15—Musical Bridges
- 8:30—Smith Brothers (NBC)
- 8:45—Sisters of the Skillet (NBC)
- 9:00—Hawswell and Cotton Queen
- 9:30—Armstrong Program (NBC)
- 10:00—Bernie Cummins' Orchestra
- 10:30—Variety
- 10:45—Bob Newhall Sports Slices
- 11:00—Van Cam's Night Caps
- 11:30—Los Amigos
- 11:45—W. M. G. Gibon Orchestra
- 12:15—William Stoves Orchestra

WFBE (250m.—1200 kc.)

- 7:00 A. M.—Break of Day
- 7:15—Musical Clock
- 8:15—Birthday Party
- 8:30—Concert Hour
- 9:00—Our Daily Thought
- 9:15—Organ Recital
- 9:30—College Tunes
- 9:45—Nawaian Dreams
- 10:05—Part: Bright Saying's Program
- 10:20—Syrine Ensembles
- 10:35—WPBE-RKO Theatre Party
- 10:50—Mrs. Evans' Questions and Answers
- 11:15—Morning Serenade
- 11:30—Morseville's Frolic
- Noon—Nappinea Club
- 12:15 P. M.—What Is Doing in Cincinnati
- 12:30—Now It Bezan
- 12:45—Mr. and Mrs. Martin Johnson
- 1:00—Around the Clock
- 1:15—Story Telling Time
- 1:30—Lumber Songs
- 2:00—Novly Notes
- 2:15—Variety

COMPLETE PROGRAMS

To facilitate the finding of network programs with no Cincinnati outlet, stations more available than the key stations WLW, WSAI (for NBC) and WABC (CBS) are listed in the network schedule.

This log of stations mentioned in these schedules will assist dialers in finding out-of-town programs:

- KDKA, Pittsburgh—980 kc.
- KMOX, St. Louis—1090 kc.
- WGNR, Chicago—870 kc.
- WGN, Chicago—730 kc.
- WGTV, Schenectady—790 kc.
- WHAS, Louisville
- WJR, Detroit—750 kc.
- WLS, Chicago—870 kc.
- WHAS, Louisville—820 kc.
- WSM, Nashville—830 kc.
- WTAM, Cleveland—1070 kc.

Friday, November 20

WSAI (225m.—1330 kc.)

- 8:00 A. M.—Gene and Glenn (NBC)
- 8:15—McCormick Piddler
- 8:45—Records
- 9:15—Odan Mattox
- 9:30—Records
- 9:45—A. & P. Orchestra (NBC)
- 10:00—Mrs. Blake's Radio Column (NBC)
- 10:15—Dr. Royal S. Copeland (NBC)
- 10:30—National Home Hour (NBC)
- 10:45—Savory Program (NBC)
- 11:00—Music Appreciation (NBC)
- 12:00 to 12:15—G. E. Home Circle (NBC)
- 3:00—Woman's Radio Review (NBC)
- 4:00—Betty Moore Decorating Talk (NBC)
- 4:15—Crosley Dealers' Salute
- 4:30—Records
- 5:30—Seger Ella
- 5:45—Records
- 6:30—Talk by Alice Richards
- 6:45—The Shipboard (NBC)
- 7:00—Records
- 7:15—Crosley Auto Stokers Quartet
- 7:30—Prince Albert Program (NBC)
- 7:45—Trial of the Goldbergs (NBC)
- 8:00—Cities Service Concert (NBC)
- 9:00—Cluquet Club (NBC)
- 9:30—Pond's Radio (NBC)
- 10:00—White Plute (NBC)
- 10:30—RKO Theater of the Air (NBC)
- 11:00—Notel Gibson Orchestra

WABC (860 kc.) CBS

- 6:00 P. M.—Dave Abrams' Orchestra
- 6:30—John Kelvin, Irish tenor
- 6:30—The Columbians
- 10:45—Tito Guizar, Spanish Tenor
- 11:00—Leon Belasco Orchestra
- 11:15—Street Singer
- 11:30—Enric Madrigrera Orchestra A. N.
- 11:45—Nocturne; Ann Leaf, with Ben Alley
- 1:00 A. M.—Roseland Ballroom Orchestra
- 1:30—Dave Abrams' Orchestra

WEAF (660 kc.) NBC

- P. M.
- 6:00—Waldorf-Astoria Orchestra
- 6:30—Ray Perkins
- 7:00—Major Benet's Family (also WENR)
- 7:15—Marion Harris, songs
- 7:15—Vincent Lopez, Orchestra
- Midnight—Cab Calloway
- 11:15—Larry Funk's Orchestra

WJZ (760 kc.) NBC

- P. M.
- 6:00—Raising Junior
- 6:15—Coon-Sanders' Orchestra
- 6:30—Sundial Bonnie Laddie
- 7:30—Phil Cook (also KDKA)
- 7:45—"Believe It or Not" Ripley (also KDKA)
- 10:00—Paul Whiteman's Pint Men (also WNAS)
- 10:30—Clara, Lu and Em (also KDKA)
- 10:45—Waves of Melody (also KDKA; WJR)
- 11:00—Slumber Music (also WJR)
- 11:30—Jack Denny Orchestra
- Midnight—Russ Colombo (also WENR) A. N.
- 12:15—William Stoves Orchestra

Saturday, Nov. 21

WCKY (202m.—1490kc.)

- 4:00—Wee Hour
- 4:30—Alice Rowlett
- 4:45—Demar and O'Shea
- 5:00—Medley Four
- 5:15—Cumberland Crooners
- 5:30—Kapua's Nawaianans
- 5:45—Duke Stork Uk and Sisters
- 6:00—Milk Man Special
- 7:00—Alarm Clock Melodies
- 7:30—Organ Melodies
- 8:00—Kentucky Mountaineer
- 8:15—Morning Devotions (NBC)
- 8:30—Cherico (NBC)
- 9:00—Wallace, Old and New
- 9:15—Tunes in Blue
- 9:30—Vocal Varieties
- 9:45—Nawaian Melodies
- 10:00—Willie's Music School
- 10:15—Classic Hour
- 11:15—Musical Melodies
- 11:30—Skillet Lickers
- Noon—Phila's Melodies
- 12:15 P. M.—Tuneful Topics
- 12:25—Laws, Stoves Uk and Sisters
- 12:30—National Farm and Home (NBC)
- 1:30—Organ Program
- 2:00—Popular Dance Melodies

WCKY Saturday, November 21

- 2:30—Marilee Melodica
- 3:00—Siesta Musicale
- 3:30—Novelty
- 4:00—Nawaian Fancies
- 4:30—Mood Indigo
- 5:00—Demar and O'Shea
- 5:30—Jimmy Eldred
- 5:45—Lucille Fox
- 6:00—Kentucky's Orchestra
- 6:30—Dinner Dance
- 6:45—Ayers News Flash
- 7:00—Amos 'n' Andy (NBC)
- 7:15—Nawaian Tenors (NBC)
- 7:30—Showboat Boys
- 7:45—Hollywood Nights (NBC)
- 8:00—Nokum Trio
- 8:15—Kentucky Mountaineer
- 8:30—Earl Arnold's Orchestra
- 9:00—Sundagers
- 9:30—Audition Nite on the Air
- 10:00—Cuckoo (NBC)
- 10:30—Clara, Lu and Em (NBC)
- 11:00—Kapua's Hawaiians
- 11:15—Doble Markum
- 11:30—Coon Sanders' Orchestra (NBC)
- Midnight—Midnight Frolic

WFBE (250m.—1200 kc.)

- 7:00 A. M.—Break of Day
- 7:15—Musical Clock
- 8:15—Birthday Party
- 8:30—Concert Hour
- 9:00—Our Daily Thought
- 9:15—Organ Recital
- 9:30—College Tunes
- 9:45—Part: Bright Saying's Program
- 10:20—Advanced French—Prof. Briol
- 10:35—WPBE-RKO Theatre Party
- 10:50—Ruth Neely
- 11:00—Shopping with Betty and Bob
- 11:15—Morning Serenade
- 11:30—Morseville's Frolic
- Noon—Nappinea Club
- 12:15 P. M.—What Is Doing in Cincinnati
- 12:45—Luncheon Musicale
- 1:00—Around the Clock
- 1:15—Kentucky's Time
- 1:30—Day Dreams
- 1:45—Chas. Daunt, tenor
- 2:00—Harvey Nardy
- 2:15—Miniature Concert
- 3:00—Paul Whiteman's Records
- 3:30—Variety
- 4:00—Van Stein
- 4:30—String Trio
- 4:45—New get-on-hot
- 5:15—The Pirates' Club
- 5:30—Musical Appreciation for Children by Lucille Jenkins
- 6:00—Moods in Blue
- 6:15—Murdoch Williams
- 6:30—Variety
- 6:45—Bernie Ford Travelogue
- 7:00—Dinner Dance Music
- 7:15—Post Question Box
- 7:30—Original Ibold Sport Review
- 7:45—With John McCormack
- 8:15—The Nawaian Dance Orchestra
- 8:30—Enata Covington and Jack Nirsch
- 8:40—Sonada Football Scores
- 8:45—Evening Stars
- 9:00—Lucky Boys
- 9:15—Dry Ridge Health Hinta
- 9:30—Reveries
- 10:00—Mansion Dance Orchestra
- 10:30—Dream Fantasy

WKRC (545m.—550 kc.)

- 6:45 A. M.—Sunrise Worship
- 7:45—Gladys Catron, organist
- 8:00—Roland Gains Mountain Rangers
- 8:15—Grab Bag Boys
- 8:30—Kentucky World Tour
- 8:50—Studio
- 9:00—Commuters (CBS)
- 9:15—Nub Clothing Co. Musicale
- 9:30—Consolidated Merchants' Program

Society Girl Wins Place in March of Time



Marion Hopkinson's first experience as an actress came when she was assigned to two "The March of Time" (Columbia and WKRC, 8:30 p. m. Fridays). She is a New York society girl who is studying for an operatic career. Her vocal talent got her the chance to play the part of Cyrena Van Gordon, and her knowledge of French gave her the role of Jose Laval, daughter of the Premier of France. Now she is one of the regular actresses in the Time broadcasts

"KAPUA'S STUDIOS"

Learn to Play the Hawaiian and Standard Guitar—Tenor Banjo or Mandolin. Hear Kapua's Hawaiians.

WCKY

Sat. 6:45 P. M.; Sun., 12 M.; Wed., 7:30 P. M.

See KAPUA at 717 Main St., Parkway 5986

TUNE IN!

"Professor" MILLER
"Baron" LLOYD

The Grab Bag Boys
Every day—8:15 to 8:45 A. M.

WKRC

BETTER RECEPTION OR YOUR MONEY BACK

For your Home For your Auto

Thousands of set owners have improved their radio reception with

Effarsee ANTENNAE

Radio's most powerful and most selective inside aerial. Variety of sizes from \$1.00 to \$5.00

FISHWICK RADIO

226 E. 8th St., Parkway 6681

WKRC Saturday, November 21

10:00—Woman's Hour—Tremettec Tully
10:30—Studio
10:45—Syracuse Contest Program
11:00—Julia Hayes, Houschod Hints
11:30—Colden Tenor
11:45—Blackberry Dudes
Noon—VI-Zey Request Program
12:15 P. M.—Christmas Tours
12:20—Don Bigelow's Orchestra (CBS)
12:30—Cincinnati Merchants Program
1:00—Pyol Program
1:15—Hotel Tark Orchestra (CBS)
1:30—Rita Carleton Hotel Orchestra (CBS)
2:00—Football Souvenir (CBS)
2:15—Football Games, Southern California vs Notre Dame (CBS)
2:45—Radio Television Institute
5:30—Cincinnati Trade School
5:45—Triple-Alce, Inc.—Football Score (CBS)
6:00—New Program—Pat Gillick, Organ
6:15—Alex McQueen
6:20—Stocks: Sporta Review
6:30—Christmas Tours
6:45—Kentucky World Tour
6:40—Studio
7:00—Washington Political Situation (CBS)
7:15—Crono—Bing Crosby (CBS)
7:30—Spanish War Veterans
7:45—Carnal Quarter Hour (CBS)
8:00—Spanish War Veterans
8:15—Philadelphia Symphony Orchestra (CBS)
10:00—Hank Simmons Show Boat—Prech-Bauer, Inc. (CBS)
11:03—Sports Review: Christmas Tours
11:15—Pyol Program
11:30—Pat Gillick, Studio
Midnight—Chiff Burns Orchestra
12:30—St. Moritz Orchestra (CBS)

WLW (428m.—700 kc.)

6:30 A. M.—International Fiddlers
7:00—Physical Exercises
7:15—Happiness Kids
7:30—Organ, Arthur Chandler, Jr.

A NEW
Radio Inspection Service

AGAIN THIS WEEK we will call at your home and test all your Radio tubes, voltages and make a general inspection of your entire Radio for—

50c

We offer you this service for a limited time only on Radios of all makes and types.

Years of experience, expert knowledge of Radio circuits and up-to-date equipment make it possible for us to analyze your entire Radio system quickly and correctly.

PHONE US NOW

Get your call at immediately. Enjoy the satisfaction of dealing with a concern that really knows Radio. Remember, a phone call brings an EXPERT.

A-B-C Radio Sales & Service
Phone Cherry 5230, 1511 Race St.

WLW Saturday, November 21

7:45—Jolly Bill and Jane (NBC)
8:00—Morning Devotions
8:15—Georgia Wildcats
8:30—Tick Tack Tattle
8:45—Physical Exercises
9:00—Girls' Program; Pollyanna Talk
9:10—Organ and Vocal Solo
9:20—Book News
9:30—Beautiful Thoughts (NBC)
9:45—WLW Mail Bag
10:00—Live Stock Reports
10:10—Piano Solo
10:15—A. & P. Orchestra
10:30—Colonel Goodbody (NBC)
10:45—Happiness Kids
11:00—Moto-Troning Time
11:10—Little Buster's Melody
11:30—Live Stock; River; Weather
11:55—Time Signals
Noon—Governmental Glimpases, Gilbert
12:15 P. M.—Pat Barnes (NBC)
12:30—Hotel Gibson Orchestra
12:45—National Farm and Home (NBC)
1:15—Netherlands Plaza Orchestra
2:00—WLW Talent Bureau
2:30—Plantation Days
3:00—A. & P. Orchestra
3:30—Vocal Dances vs. Southern California Football Game (NBC)
6:00—Old Man Sunshine
6:15—The Chatter
6:30—Little Buster's Parade
6:45—Lowell Thomas (NBC)
7:00—Amos 'n' Andy (NBC)
7:15—Crosley Theater of the Air
7:45—Hotel Gibson Orchestra
8:00—Crosley Pollies (to KQV, WIBO)
8:30—Dance with Countess Dorsay (NBC)
9:00—King Edward Cigar Band
9:30—The First Nighter (NBC)
10:00—Kara Paricle Program
10:15—The Italian Serenaders
10:30—Variety
10:40—Bob Newhall Sports Slices
11:00—Van Camp Night Caps
11:30—Doodlecockers
Midnight—Ernie Palmquist Carolina Col
1:15—The Regatta, Graystone Ballroom
12:30—Beric Cuminist Orchestra
1:00—Hotel Gibson Orchestra

WSAI (225m.—1330 kc.)

8:00 A. M.—Gene and Glenn (NBC)
8:15—McGormick's Old-Time Fiddlers
8:45—Records
9:15—Odas Maddox, banjo
9:30—Records

WSAI Saturday, November 21

9:45—A. & P. Program (NBC)
10:00—Mrs. Blake's Radio Column (NBC)
10:15—Dave Roberts, banjo
10:30—Dr. Harry Emerson Fodick (NBC)
11:30—Live Stock Reports
11:45—Records
Noon—Sign off
1:45 P. M.—Yale-Harvard Football Game (NBC)
3:30—Dancing Melodies (NBC)
4:00—Records
4:15—Crosley Dealers Salute
4:30—Records
5:00—Southern Singers, Raymond Mitchell
5:30—Records
6:30—Mr. Boas and Co. (NBC)
7:00—Dick Lucas (NBC)
7:15—Laws That Safeguard Society (NBC)
7:30—Prince Albert Program (NBC)
7:45—Trials of the Goldbergs (NBC)
8:00—Maxwell House Dance Ensemble
8:30—National Education Talk (NBC)
9:00—Pryor's Goodbye Band (NBC)
9:30—Club Valpar (NBC)
10:00—Lucky Star Dance (NBC)
11:00—Netherlands Plaza Orchestra

WABC (860 kc.) CBS

P. M.

6:00—Anthony Trini Orchestra
6:30—Don Bigelow's Orchestra
6:45—Connie Boswell
7:00—Rita and Bunn
8:00—The Mills Brothers
10:00—Ernie Madriguera's Orchestra
11:15—Jack Miller
11:30—Luis Belasco Orchestra
11:45—Nocturne
Midnight—Guy Lombardo's Orchestra
A. M.

WJZ (760 kc.) NBC

P. M.

6:00—Raising Junior
6:15—Grown Answer Man
6:30—Brever Leaf Boy
7:30—Benrus Program
7:45—Hollywood Nights (also KDKA; WJZ)
8:00—Danger Eighties (also WFPAS)
9:00—Chicago Civic Opera
10:00—Cuckoo (also WJZ)
10:30—Clara Lee and znt (also WGN)
10:45—Twenty Fingers of Harmony (also KDKA)
11:00—Slumber Music (also WJZ)
11:30—Rene Clowrie (also WENR)
11:45—Low White, organ
Midnight—Mildred Bailey and King's Jesters (also WJR)
A. M.

WJZ (760 kc.) NBC

12:15—Paul Whiteman Orchestra (also WJR)

WCKY Sunday, November 22

4:00—Sanders Trio
4:15—Lawson's Hawaiiana
4:45—Delic Marikun
5:00—Dr. Harry Emerson Fodick (NBC)
5:30—Julius Monk, pianist
5:45—Lucille Fox, blues singer
6:00—Sundoggers
6:30—Randall Fryer, tenor
6:45—Kapua's Hawaiians
7:00—Willis Overland Program (NBC)
7:15—Lena Pope, soprano
7:30—College of Music
8:00—Demart and O'Shea
8:30—Earl Arnold's Orchestra
9:00—Skillit Lickers
9:15—College of Music
9:45—Italian Serenaders
10:00—Kentucky Mountaineer
10:15—Harbor Lights (NBC)
10:30—College of Music
11:00—Cumberland Crooners
11:15—Earl Arnold's Orchestra
11:45—South Sea Islanders (NBC)

WEAF (660 kc.) NBC

6:00—Waldorf-Astoria Orchestra
8:00—Civic Concert's Service (also WTAM)
8:30—National Advisory Council on Radio in Education
11:00—Marion Harris, organ
11:15—Jesse Crawford, organ
11:30—Leon Sanders' Orch. (also WTAM)
Midnight—Rudy Waller and Connecticut Yankees (WTAM)
A. M.

WJZ (760 kc.) NBC

6:00—Raising Junior
6:15—Grown Answer Man
6:30—Brever Leaf Boy
7:30—Benrus Program
7:45—Hollywood Nights (also KDKA; WJZ)
8:00—Danger Eighties (also WFPAS)
9:00—Chicago Civic Opera
10:00—Cuckoo (also WJZ)
10:30—Clara Lee and znt (also WGN)
10:45—Twenty Fingers of Harmony (also KDKA)
11:00—Slumber Music (also WJZ)
11:30—Rene Clowrie (also WENR)
11:45—Low White, organ
Midnight—Mildred Bailey and King's Jesters (also WJR)
A. M.

WJZ (760 kc.) NBC

12:15—Paul Whiteman Orchestra (also WJR)

WFBE (250m.—1200 kc.)

8:00 A. M.—Break of Day
8:30—Concert Hour
9:00—College of Music
9:30—Invitation to the Waltz
10:15—Dry Ride Health Hints
10:30—Vocal Varieties
10:45—Bernard Barry Travologue
11:00—Excerpts from the Opera
11:30—Our Thought for Today
11:45—Morning Melodies
12:00—Lena Pope, soprano and Cortes
12:30—LFA Theatre
12:45—Luncheon Melodica
1:00—Jewish Hour
1:15—Belle Bullington, baritone
1:45—Round the Clock
2:00—Jamea A. Dorsey
2:15—The Orioles
2:30—Bill Reith's Cincinnati Panthers
3:00—Gleb Pionten
3:15—Maurice and Nelson
3:30—Beyond the Horizon
3:45—Male Quartet
4:00—Club Dance
4:15—Pastels in Prose
4:30—Variety, Bee Campbell
4:45—Post Symphony Hour
5:15—Mrs. Lloyd Hoshaw, Book Review
6:00—Twilight Reveries
6:30—Church Federation Hour
7:00—Emma Methwin
7:15—With the Sentinels
7:30—Original Ibold Sport Review
7:45—Old Time Pights—Harry Hartman
8:30—Mansion Dance Orchestra
9:00—Mansion Dance Orchestra
9:30—Novelty Notes
9:45—Douglas Pinguely, basso
10:00—Mansion Dance Orchestra
10:30—Dream Fantasy

WKRC (545m.—550 kc.)

6:45 A. M.—Suzette Washburn
7:00—God's Bible School
7:15—Jewish Program
7:30—Jewish Veterans Civic Hour
Noon—American Legion Program
1:00 P. M.—Jewish Community Program
1:30—Cathedral Quarter Hour (CBS)
1:45—Fenia Program (CBS)
2:00—Eight Sons of Eli (CBS)
2:30—Columbia Church of the Air (CBS)
3:00—Ann Leaf at the organ (CBS)
3:15—New York Philharmonic Symphony (CBS)
5:00—Rev. Donald Grey Barnhouse (CBS)
5:30—Xavier—Twenty Minutes of Good Reading
6:00—Chicago Knights (CBS)
6:15—Sports Review
6:30—Christmas Tours
6:45—Kentucky World Tour
6:45—Arch. Preserver Band
6:50—Studio
7:00—Old Wurzburg Malt
7:15—Charlie and Oscar (CBS)
7:30—Ludens' Novelty Orchestra (CBS)
8:00—Devils, Drums and Doctors (CBS)
8:15—Dan Beddoe, tenor
8:45—Angelo Patrizi—"Your Child" (CBS)
9:00—Street Summer Program
9:30—Romances of the Sea (CBS)
10:00—Edna Wallace Hopper Variety Show (CBS)
10:30—Horseshoe Gardens—Chiff Burns
11:00—Time Weather; Sports Review
11:08—Christmas Tours
11:13—Kentucky World Tour
11:18—The Gauchas (CBS)
11:30—Ben Bernie's Orchestra (CBS)
Midnight—Eddie Duchin's Orch. (CBS)

WCKY (202m.—1490kc.)

Noon—Sparklets (NBC)
12:15 P. M.—Studio Program
12:30—Balkan Mountain Men (NBC)
1:00—Medley Pour
1:10—Ellis Prakes, basso
1:45—Pop Concerts (NBC)
2:15—Cardea Love (NBC)
2:30—Art Club Concert
3:00—National Youth Conference (NBC)
5:30—Waldorf-Astoria Organ Recital (NBC)

RADIO TUBE SPECIALISTS
Any Type of Tube for Any Make of Radio

LINK'S TUBE SHOP
607 WALNUT STREET
RADIO REPAIRING Parkway 6415

SUPERHETERODYNE
Pentode Output--Variable Mu
Full Size Dynamic Speaker

The Crosley
LITLFELLA

\$36³⁶ Complete with TUBES

Crosley sweeps aside all precedent in offering the sensational Crosley LITLFELLA, a compact table model, Pentode Output, Variable Mu, SUPERHETERODYNE with an illuminated dial and full size dynamic speaker, at a price less than that asked for other ordinary circuit receivers. Never before has it been possible to obtain a SUPERHETERODYNE at this remarkably low price. Think of it! A Crosley 5-tube SUPERHETERODYNE for \$36.36, complete with tubes! Compare the Crosley LITLFELLA feature by feature with other radio receivers sold at this price, then you will know Crosley offers you the greatest value per dollar in radio. Come in and hear the Crosley LITLFELLA today. You will marvel at its high sensitivity, razor-edge selectivity and superior tone.



May-Stern & Co.
FIFTH AND ELM STREETS

YOU'RE THERE WITH A CROSLY
CROSLY RADIO

Sunday, Nov. 22

WCKY (202m.—1490kc.)

Noon—Sparklets (NBC)
12:15 P. M.—Studio Program
12:30—Balkan Mountain Men (NBC)
1:00—Medley Pour
1:10—Ellis Prakes, basso
1:45—Pop Concerts (NBC)
2:15—Cardea Love (NBC)
2:30—Art Club Concert
3:00—National Youth Conference (NBC)
5:30—Waldorf-Astoria Organ Recital (NBC)

JANE GREY and The Kampf Artists
Mon., Wed., Fri. 11:45 A.M.
Sponsored by The A. W. Kampf Jewelry Co. Diamond Mounting Specialists
18 West Sixth St.

French-Bauer, Incorporated brings the nationally famous

Hank Simmons Show Boat
to you every Saturday night over Station WKRC from 10:00 to 11 o'clock

French-Bauer INCORPORATED
"Better Dairy Products Since 1842"

Sunday, November 22

- WLW (428m.—700 kc.)**
- 9:00 A. M.—Church Forum
 - 9:30—Children's Program (NBC)
 - 10:00—Organ, Arthur Chandler, Jr.
 - 10:25—Feature Report
 - 10:30—Fiddlers Three (NBC)
 - 10:45—Song for Today (NBC)
 - 11:00—Russian Singers (NBC)
 - 11:30—Morning Musicale (NBC)
 - 12:30 P. M.—Plantation Days
 - 12:45—Henry Thies Orchestra
 - 1:15—Damosch Symphony (NBC)
 - 2:15—Concertatory of Music
 - 2:30—Yeast Poppers (NBC)
 - 3:00—Crosley Theatre of the Air
 - 3:30—Shroton Musicale
 - 4:00—League of Little Flower (WJR)
 - 5:00—Crosley Musical Showman
 - 5:30—Simonit Concert (NBC)
 - 6:00—Cincinnati Unemployment Concert
 - 6:30—The Chatter
 - 6:45—Vanity Fair Program (NBC)
 - 7:00—Bernie Cummins' Orchestra
 - 7:15—Jolly Time Revue (NBC)
 - 7:30—The Three Dakers (NBC)
 - 8:00—Eana Jettick Melodies (NBC)
 - 8:15—Collier's Radio Hour (NBC)
 - 9:15—Bayuk Stag Party (NBC)
 - 9:45—Coffee Hag Slumber Music (NBC)
 - 10:15—Gold Medal Express (NBC)
 - 10:45—Variety
 - 11:02—Ernie Palmquist Collegians
 - 11:30—From River
 - Midnight—Henry Thies' Orchestra
 - 1:00—Bernie Cummins' Orchestra

WSAI (225m.—1330 kc.)

- 2:15 P. M.—Sunday Bright Spot (NBC)
- 2:30—Serenonette and Hymn Time
- 3:00—Wayne King Orchestra (NBC)
- 3:30—National Religious Services (NBC)
- 4:00—Ploreshim Frolic (NBC)
- 4:30—The Gender Program (NBC)
- 5:00—International Opynes (NBC)
- 5:30—General Electric Program (NBC)
- 6:00—Catholic Hour (NBC)
- 7:00—Through the Opera Glass (NBC)
- 7:30—Lectid Club of the Air (NBC)
- 8:00—Chase & Sanborn (NBC)
- 9:00—"Our Government"—David Law (NBC)
- 9:15—Album of Familiar Music (NBC)
- 9:45—The Buick Program (NBC)
- 10:15—Ted Weicks' Orchestra (NBC)

WABC (850 kc.) CBS

- P. M.
- 6:00—Chicago Nights
 - 6:30—Howard Danardis or
 - 6:30—Barnsdall Musicale Memories (KNOX only)
 - 8:15—Music Along the Wires: Symphony Orchestra
 - 9:00—Rory Theatre Symphony (also KNOX)
 - 10:00—Edna Wallace Hopper's Variety Show
 - 11:00—The Gauchos
 - 12:30—Nocturne, with Ann Leaf

WEAF (660 kc.) NBC

- P. M.
- 2:30—Moonshine and Honeyuckle
 - 3:00—The Parties' Neighbors (also WHAS; WTAM)
 - 11:15—Ralph Kirby, baritone
 - 11:30—Jesse Crawford, organ
 - Midnight—Larry Funk Orchestra

WJZ (760 kc.) NBC

- P. M.
- 5:00—National Vesters—Dr. H. E. Fodick (also KDKA)
 - 6:00—Raising Junior (also WJR)
 - 6:15—Veronica Wiggins, songs
 - 6:30—My Portrait Gallery of Famous Britons
 - 7:15—Jolly Time Review (also WLS)
 - 8:15—Harbor Lights (also WENR)
 - 10:45—Land of Wonder and Fear
 - 11:00—Witherpoon Chorus (also KDKA)
 - 11:30—Russ Columbia (also KDKA)
 - 11:45—South Sea Islanders

Monday, Nov. 23

WCKY (202m.—1490kc.)

- 7:00 A. M.—Alarm Clock Melodies
- 7:30—Band Music
- 8:00—Kentucky Mountaineer and Little Jimmy
- 8:15—Morning Devotions (NBC)
- 8:30—Cherie (NBC)
- 9:00—Wallace, old and new
- 9:30—Tunes in Blue
- 10:00—Vocal Varieties
- 10:30—Classic Hour
- 11:00—Musical Melodies
- 11:30—Skillet Lickers
- Noon—Luncheon Concert
- 1:15 P. M.—Live Stock Quotations
- 12:15—National Farm and Home (NBC)
- 1:30—Organ Recital
- 2:00—Kentucky Federated Women's Club
- 2:15—Woods in Indigo
- 2:30—Music Masters
- 3:00—Sieta Musicale
- 3:15—Matinee Melodies
- 3:45—Marian Revue
- 4:00—Rhythmic and Rhythmic

BURCK - BAUER, Inc.
807 RACE ST.
Westinghouse Radios and Refrigerators. General Motors and Sparten Radios. Intentional service on all makes Radios and Refrigerators.
Phone PA-4way 5600



Four youngsters, all under 22, and they jumped in two months from Cincinnati to Broadway. That's the story of the Mills Brothers whom WLW first put on the air about a year ago and who this week began a four week contract at the Paramount Theatre at Times Square. Their theatre engagement doesn't interfere with their 8 p. m. appearances on Tuesday, Thursday and Saturday on the Columbia network, or with their making of records (the first recording was released this week.) According to Variety, theatrical magazine, the Mills Brothers will be spotted in a new Ziegfeld show about the first of January. Left to right, the brothers are Herbert, 19; Donald, 17; John, 21; and Harry, 18. Although their voices sound like an orchestra, the only instrument they play is the mail-order guitar (\$6.25, C. O. D.) that John plunks as an accompaniment. They were born and raised in Piqua, O. Before their father turned barber, he and their mother sang in vaudeville. The boys began singing together when John was 13 and Donald a mere nine. At first they performed for stray pennies, nickels and dimes until their father set them up as entertainers in his barber shop to keep them off the street. Business doubled and the Mills family was able to shoo the wolf from the door. It is reported that Harry and Donald like New York immensely. John and Herbert prefer Cincinnati. They left their girls here.

WCKY Monday, November 23

- 4:15—Show of Today
- 5:00—Popular Requests
- 5:30—Bud Lee and Jim
- 6:15—Medley Hour
- 6:45—Eana Paris
- 7:00—Story Book Hour
- 7:30—Tonight Organ Reveries
- 8:00—Ayers News Flash
- 8:15—Amos 'n' Andy (NBC)
- 8:45—Patsyost Jesters (NBC)
- 9:15—Julius Monk, pianist
- 9:45—Dance of Melody (NBC)
- 10:00—Faye Sarvin, pianist
- 10:15—Dulce Markum
- 10:30—Mystery Drama, "Castle Quint"
- 10:45—Sundoggers
- 11:00—Armenia and Willie
- 11:15—Skillet Lickers
- 11:30—"Four Aces," male quartette
- 11:45—Kapua's Havaiians
- 12:00—Ceon Sanders Orchestra (NBC)
- 12:15—Ruzel and Grady Hodges
- 11:30—Hokum Trio
- 11:45—Kentucky Mountaineer

WFBE (250m.—1200 kc.)

- 7:00 A. M.—Break of Day
- 7:15—Musical Clock
- 8:00—Spirchday Party
- 8:30—Concert Hour
- 9:00—"Our Daily Thought"
- 9:15—Organ Recital
- 9:30—The Pirated Club
- 9:45—Hawaiian Dreams
- 10:05—Dot: Bright Saying Program
- 10:20—Spring Ensembles
- 10:35—WPBE-PKO Theatre Party
- 10:50—Mrs. Evans
- 11:00—Shopping with Betty and Bob
- 11:15—Morning Serenade
- 11:30—Massive's Frolic
- Noon—Happiness Club
- 12:15 P. M.—What's Doing in Cincinnati
- 12:30—How It Began
- 12:45—Luncheon Musicale
- 1:00—Around the Clock
- 1:15—Story Tell'ng Time
- 1:45—Slumber Songs
- 2:00—With Kate Smith
- 2:15—Variety
- 2:45—Afternoon Dance Frolic
- 3:15—Julius Monk
- 3:30—Vine Street Foot Clinic
- 3:45—Memory Lane
- 4:00—Voice of the Strings
- 4:30—Frank and Larry
- 4:45—Musical Interlude
- 5:15—The Pirated Club
- 5:30—Tea Time Tunes
- 5:45—Spirit Program
- 6:00—Besswell Theatre Party
- 6:15—Hits from the Shows
- 6:30—Show Windows—Frank Aston
- 6:45—Burning Ford Travelogue
- 7:00—Dinner Music
- 7:15—Post Question Box

WANTED
BOYS TO SELL RADIO DIAL
MAKE GOOD MONEY IN SPARE TIME
See R. Stolin at Central News Co.
320 E. Third St. MAIN 2111

WKRC Monday, November 23

- 3:00—Vi-Zoy Program
- 3:15—Salon Orchestra (CBS)
- 3:30—Arthur Jarrett (CBS)
- 3:45—Sam Frager, pianist (CBS)
- 4:00—Cincinnati Trade School Program
- 4:15—Bert Lau's Orchestra (CBS)
- 4:30—Webb Idol Program (CBS)
- 4:45—Alma & Doepke Program
- 5:00—A. O. Rust—Happy Feet
- 5:15—Radio Television Institute
- 5:30—Anthea Olive Kresnel Song (CBS)
- 5:45—Candy Quarter Hour (CBS)
- 6:00—Re-Nu Program—Pat Gillick, Organ
- 6:15—Sports Review, Stocks
- 6:30—Kate Smith's Orchestra (CBS)
- 6:45—Reis and Dunn (CBS)
- 7:00—Wrigley—Myrt and Marge (CBS)
- 7:15—Cremo—Bing Crosby (CBS)
- 7:30—Baker Bar—Boswell Sisters (CBS)
- 7:45—Camal Quarter Hour (CBS)
- 8:00—R. B. Clabes—Grab Bag Boys
- 8:15—Singing Sam, Barbasol Man (CBS)
- 8:30—Kate Smith, La Palma (CBS)
- 8:45—Old Wurzburg Malt Program
- 9:00—Pompein Make Up Box (CBS)
- 9:15—Sireit Slumber Music
- 9:30—An Evening in Paris (CBS)
- 10:00—Guy Lombardo Panatella Orchestra (CBS)
- 10:30—Toscha Seidel (CBS)
- 11:00—Queen Answer Man
- 11:03—Time, Weather, Sports Review
- 11:12—Pyol Program
- 11:30—Pat Gillick and His Gang
- Midnight—Ben Bernie Orchestra (CBS)

WLW (428m.—700 kc.)

- 8:30 A. M.—International Fiddlers
- 9:00—Physical Exercises
- 7:15—Happiness Kids
- 7:30—Organ, Arthur Chandler, Jr.
- 7:45—Jolly Bill and Lane (NBC)
- 8:00—Morning Devotions
- 8:15—Georgia Wildcats
- 8:30—Bessell Pickups (NBC)
- 8:45—Lafayette School of Cookery
- 9:15—Musical Portrait
- 9:20—Child Care—Dr. Ada Arlitt
- 9:30—Beautiful Thoughts (NBC)
- 9:45—Radio Fells
- 10:00—Live Stock Reports; Piano
- 10:15—A. & P. Orchestra
- 10:30—Colonel Goodbody (NBC)
- 10:45—Ford Luck
- 11:00—Elliott Brock, violin recital
- 11:15—Mrs. A. M. Goudis (NBC)
- 11:30—White Lead Program (NBC)
- 11:45—Rivers; Weather; Time
- Noon—Seger Ellis
- 12:15 P. M.—Pat Barnes (NBC)
- 12:30—Hotel Gibson Orchestra
- 12:45—Market Live Stock Reports
- 1:00—National Farm and Home (NBC)
- 12:30—Bernie Cummins' Orchestra
- 2:00—Ohio School of the Air
- 3:00—Interviews by Alice Cory
- 3:15—Bradley Kincaid

WKRC Monday, November 23

- 7:30—Original Bold Sport Review
- 7:45—Julius Sien
- 8:00—Hub Clothing Co. Players
- 8:15—Newport Finance Program
- 8:30—Covington and Hersh
- 9:00—Lucky Boys
- 9:15—Dry Ridge Health Hints
- 9:30—Piano Selections
- 9:45—Highlights of the World Series, Bob Bishaw
- 10:00—WPBE Vaudeville Show
- 10:30—Dream Fantasy

WKRC (545m.—550 kc.)

- 6:45 A. M.—Sunrise Worship
- 7:45—Gladya Catron, Organist
- 8:00—Royland Gaines Mountain Rangers
- 8:15—Grab Bag Boys
- 8:45—The Old Dutch Girl (CBS)
- 9:00—Commuters (CBS)
- 9:30—Consolidated Merchants' Program
- 10:03—Woman's Hour—Tremette Tully
- 10:30—Art Dry Cleaners
- 10:45—Saloon Program (CBS)
- 11:00—Syonel Program
- 11:15—Julia Hayes
- 11:45—Jani Grey and "Kampf, the Jeweler, Artists"
- Noon—Blackberry Dudes
- 12:15 P. M.—Christmas Tours
- 12:30—Kentucky World Tour
- 12:30—Cincinnati Merchants' Program
- 1:00—Kenton Pharmacutical Program
- 1:15—Pines Automatic Winterfront
- 1:30—Goldie Tenor
- 1:45—Hub Clothing Co. Musicale
- 2:00—Pyol Program
- 2:15—Burck-Bauer Organ
- 2:30—American School of the Air (CBS)

WHY

suffer from Nervous Disorders, Rheumatism, High Blood Pressure and other chronic ailments? Investigate the benefits others have derived with the use of nationally famous Electro-Magnetic **THERONOID** Not a Medicine or Herb but a magnetic appliance used and endorsed by thousands of Cincinnatians! Send for descriptive literature or call at office and use the Theronoid free over a period of several days without obligation.

THERONOID
OF CINCINNATI
311 LYRIC BLDG.
MAIN 5679

Liberty and Race,
ESTABLISHED 10 YEARS
Cherry 5946

WLW Monday, November 23

- 3:30—Three Doctors (NBC)
- 3:45—Tide, Tack, Toe
- 4:00—A. & P. Orchestra
- 4:30—Organ Matinee
- 5:00—Chats with Peggy Winthrop (NBC)
- 5:15—Lon Vanueta de Remon
- 5:45—Little Orphan Annie (NBC)
- 6:00—Old Man Sunshine
- 6:15—The Chatter
- 6:30—Crosley Auto-Singers
- 6:45—Lowell Thomas (NBC)
- 7:00—Amos 'n' Andy (NBC)
- 7:15—Sunset Melodies
- 7:30—Variety
- 7:45—Scherlin Rubber Program
- 8:00—Sralith' Ed McConnell
- 8:30—Hollingsworth Hall
- 9:45—Vick's Chemical Program
- 9:00—Armoa Barna
- 9:30—Musical Dominos (NBC)
- 10:00—Korn Parchie Program
- 10:15—Bab Newhall Sports Slices
- 10:30—Red Folks (NBC)
- 11:00—Van Camp Night Cap
- 11:30—WLW Fanfare
- Midnight—Hotel Gibson Orchestra
- 12:30—Netherlands Plaza Orchestra

WSAI (225m.—1330 kc.)

- 8:00 A. M.—Gene and Glenn (NBC)
- 8:45—McCormick's Fiddlers
- 8:45—Records
- 9:15—Odas Maddox, guitar
- 9:30—Records
- 9:45—A. & P. Program (NBC)
- 10:00—Mrs. Blake's Radio Club (NBC)
- 10:15—Dr. Royal S. Copeland (NBC)
- 10:30—Jean Carroll—Please Tell Me (NBC)
- 10:45—Organ Program
- 11:00—McCormick's Old Time Fiddlers
- 11:30—Records
- Noon to 12:15—G. E. Music Circle (NBC)
- 12:50 P. M. to 1:00—Live Stock Reports
- 3:00—Woman's Radio Review (NBC)
- 4:00—Records

FREE
NEW 1932
RADIO LOG
Years for the asking at
KRAUSS' RADIO STORE
111 E. 15TH STREET

QUEEN CITY RADIO SERVICE CO.
826 Broadway, Cincinnati, Ohio
Radios Repaired Aerials Installed
Expert guaranteed service on all makes of radios and phonographs by Cincinnati's oldest exclusive radio service company.
PHONE Cherry 2440

RADIO SERVICE

Complete inspection by an expert in your home. Our service work guaranteed ninety days. Replacements made with original parts. Don't take chances. Call

50c

SCHWARTZ RADIO SERVICE SHOP
ESTABLISHED 10 YEARS
Liberty and Race, Cherry 5946

at the first of the month

when all the bills start coming in, then Dad begins to grey. Here's a new economy measure: have "radio nights" at your home, instead of paying for other entertainment. RADIO DIAL is your reserved seat, enabling you to hear what you like best. And to double your economy: the coupon will bring you RADIO DIAL for the next 26 weeks for only \$1.

RADIO DIAL
22 E. 12th Street, Cincinnati, Ohio
Let's have Radio Dial for six months. I enclose one dollar (check, currency, money order).

New Renewal

Name _____
Address _____
City _____ State _____

WHY?

Would you take your automobile to a blacksmith to have it repaired? Then why let inexperienced radio men tinker with your radio? Bring your radio ills to us for permanent cure.

Radio Engineers Service Bureau
125 E. 12th St., Parkway 6260

- WSAI Monday, November 23**
- 4:15—Crosley Dealers' Salute
 - 4:30—Records
 - 4:45—Minneapolis and Chick
 - 5:00—Crosley Singers
 - 5:30—Odas Maddox, guitar
 - 5:45—Records
 - 6:30—Everyday Poems by George Elliston
 - 6:45—The Robbins Boys (NBC)
 - 7:00—Vermont Lumberjacks (NBC)
 - 7:15—Campbell Soup Orchestra (NBC)
 - 7:30—Prince Albert Program (NBC)
 - 7:45—Tails of the Goldbergs (NBC)
 - 8:00—Marshall House Dixie Ensemble
 - 8:30—Voice of Pirateone (NBC)
 - 9:00—A. & P. Gypsies (NBC)
 - 9:30—General Motors (NBC)
 - 10:00—True Story Program (NBC)
 - 10:45—Crosley Auto Stokers Quartet
 - 11:00—Records

Monday, November 23

WABC (860 kc.) CBS

- P. M.**
- 6:15—Don Bigelow Orchestra
 - 8:00—The Columbians
 - 9:15—Howard Barlow's Symphony Orch.
 - 11:00—Leon Belasco, Orchestra
 - 11:15—Street Singers
 - 11:30—Eric Madriguera's Cuban Orch. A. M.
 - 12:30—Noble Slaye's Orchestra
 - 1:00—Hotel Edison Orchestra
 - 1:30—Dave Abrams' Orchestra

WEAF (660 kc.) NBC

- P. M.**
- 6:30—Waldorf-Astoria Orchestra
 - 6:30—Ralph Kirby, baritone
 - 8:00—Soconyland Sketches
 - 10:00—Coon-Sanders' Orchestra
 - 10:45—Lee Morse, crooner
 - 11:30—Jesse Crawford, organ
 - 11:45—Cab Calloway Orchestra
 - Midnight—Earl Hines' Orchestra A. M.
 - 12:30—Tweeth Hogan Orchestra

WJZ (760 kc.) NBC

- P. M.**
- 6:00—Raising Junior
 - 6:15—Peter van Steeden Orchestra
 - 7:30—Phil Cook
 - 8:00—Archer Gibson, organ
 - 8:30—Death Valley Days, drama (also WLS)
 - 9:00—Maytag Orchestra (also KDKA; WLS)
 - 11:00—Slumber Music
 - 11:30—Rosa Colombo, songs
 - 11:45—Lew White, organ
 - Midnight—Mildred Bailey and the King's Jesters A. M.
 - 12:15—Whytes Orchestra (also WENR)

Tuesday, Nov. 24

WCKY (202m.—1490kc.)

- 7:00 A. M.—Alarm Clock Melodies
- 7:30—Musical Melodies
- 8:00—Kentucky Mountaineer
- 8:15—Morning Devotions (NBC)
- 8:30—Cherrio (NBC)
- 9:00—Waltzes, organ and new
- 9:30—Tunes in Blue
- 10:00—Vocal Varieties
- 10:30—Classic Hour
- 11:00—Musical Novelties
- 11:30—Skillet Lickers
- 11:30—Luncheon Concert
- 12:25 P. M.—Live Stock Quotations
- 12:30—National Farm and Home (NBC)
- 1:00—Piano Novelties
- 2:00—Elinor Hurdle, dramatic reader
- 2:15—Noels in Indigo
- 2:30—Music Masters
- 3:00—Siesta Musicale
- 3:15—Matinee Melodies
- 3:45—Hawaiian Reveries
- 4:00—Tune up that
- 4:15—Stars of Today

Tuesday, November 24

- 3:00—Popular Requests
- 5:00—Dorothy Meyer
- 5:15—Kentucky Mountaineer
- 5:30—Jimmy Eldred, pianist
- 5:45—Lucille Fox, blues singer
- 6:00—Story Book Hour
- 6:30—Twilight Organ Reveries
- 6:55—Ayers News Flash
- 7:00—Amos 'n' Andy (NBC)
- 7:15—Hukum Trio
- 7:30—"Crimline Girl," Alma Ashcraft
- 7:45—Back of the News in Washington (NBC)
- 8:00—Louise Ryder, contralto
- 8:15—Cumberland Orchestra
- 8:30—Earl Arnold's Orchestra
- 9:00—Meadley Four
- 9:30—Tommie and Willie
- 10:00—Skillet Lickers
- 10:30—Clara, Lu and Em (NBC)
- 10:45—Paris Night Life (NBC)
- 11:00—Demart and O'Shea
- 11:30—Earl Arnold's Orchestra

WFBE (250m.—1200 kc.)

- 7:00 A. M.—Break of Day
- 7:15—Musical Clock
- 8:15—Birthday Party
- 8:30—Concert Hour
- 9:00—Our Daily Thought
- 9:15—Organ Recital
- 9:30—College Tunes
- 9:45—Morning Melodies
- 10:05—Do: Bright Saying Program
- 10:20—Waltz Melodies
- 10:35—WFBE K.C. Theatre Party
- 10:50—Sister Mary's Kitchen
- 11:00—Shopping with Betty and Bob
- 11:15—Morning Serenade
- 11:30—Housewife's Frolic
- 11:45—Happiness Club
- 12:15 P. M.—What's Doing in Cincinnati
- 12:30—How It Began
- 12:45—Luncheon Musicale
- 1:00—R.F.C. Theatre Party
- 1:15—Story Telling Time
- 1:30—Day Dreams
- 1:45—Two Irish Boys
- 2:00—With the Handmasters
- 2:15—Ralph Pinkaton
- 2:30—Afternoon Melodies
- 3:00—With John McCormack
- 3:15—Novelty Club
- 3:30—Bee Campbell
- 3:45—Song of the Strings
- 4:00—Prof. Briol
- 4:15—Ten Times Tunes
- 4:30—Neal's Cafeteria Blues Busters
- 4:45—The Islanders
- 5:15—The Pirates' Club
- 5:30—Musical Inclusion
- 6:00—Roosevelt Theatre Party
- 6:15—Murdock Williams
- 6:45—Rerun Parl Travlogue
- 7:00—Dinner Dance Music
- 7:15—Post Questions Box
- 7:30—Original Idol Spurt Review
- 7:35—University of Cincinnati
- 8:00—Mansion Dance Orchestra
- 8:30—Eather Conington and Jack Hirsch
- 8:45—Dry Dried Health Hints
- 9:00—Lucky Boys
- 9:15—Western Hills Community Program
- 9:30—Aldridge Appl
- 10:00—Mansion Dance Orchestra
- 10:30—Dance Fantasy

WKRC (545m.—550 kc.)

- 6:45 A. M.—Sunrise Worship
- 7:45—Gladys Catron, Organist
- 8:00—Robert Gaines' Mountain Rangers
- 8:15—Grab Bag Boys
- 8:45—Kentucky World Tour
- 9:00—Commuters (CBS)
- 10:00—Consolidated Merchants Program
- 10:00—Oval Pattern (CBS)
- 10:18—Woman's Hour—Tremletie Tully
- 10:45—Julia Hayes, Household Hints
- 11:15—Face the World with a Smile (CBS)
- 11:30—Vocal Art Trio (CBS)
- 11:45—Ben Alley
- 12:00—Blackberry Dudes
- 12:15 P. M.—Christmas Tours
- 12:20—Don Bigelow's Orchestra (CBS)
- 12:30—Cincinnati Merchants' Program
- 1:00—Pabstette Varieties (CBS)
- 1:15—Farm Network Program (CBS)
- 2:00—Pyol Program

Tuesday, November 24

- 2:15—Musical Americans (CBS)
- 2:30—American School of the Air (CBS)
- 3:00—Vi-Zoy Request Program
- 3:15—Salon Orchestra (CBS)
- 3:30—Grease-off Program
- 3:45—Columbia Tenors
- 4:00—Miriam Ray (CBS)
- 4:15—Sycno Program
- 4:30—Webb Fuel Program
- 4:45—Aimee & Deepak—Children's Hour
- 5:00—Frank Ross, Songs (CBS)
- 6:15—Radio Television Institute
- 6:30—Cincinnati Trade School
- 6:45—Hub Clothing Co. Musicale
- 7:00—Re-Nu—Fast Girls (CBS)
- 6:15—Sports Review; Stocka
- 6:30—Charlie and Oscar (CBS)
- 6:45—Connie Boswell (CBS)
- 7:00—Wrigley—Myra and George (CBS)
- 7:15—Cremo—Bing Crosby (CBS)
- 7:30—Kaltenborn Edits the News (CBS)
- 7:45—Camel Quarter Hour (CBS)
- 8:00—R. B. Chappell—Blue Ribbon Boys
- 8:15—Abe Lyman's Orchestra (CBS)
- 8:30—Red Goose Adventures (CBS)
- 8:45—Gerardine—Walter Winchell (CBS)
- 9:00—en—Beverly Blue Ribbon Malt Orchestra (CBS)
- 9:30—Romances of the Sea (CBS)
- 10:00—Modern Male Chorus (CBS)
- 10:15—Star Block—Lester Bruce (CBS)
- 10:30—Eddie Schoelwer—Tom Collins, Jr.
- 10:45—Christmas Tours
- 10:50—Kentucky World Tour
- 11:00—Sports Review; Studio
- 11:15—Pyol Program
- 11:30—Pat Gillick and His Gang
- Midnight—Romanelli's Orch. (CBS)

WLW (428m.—700 kc.)

- 6:30 A. M.—International Fiddlers
- 7:00—Physical Exercises
- 7:15—Happiness Kids
- 7:30—Organ Program, Arthur Cbsndler, Junior
- 7:45—Jolly Bill and Jane (NBC)
- 8:00—Morning Devotions
- 8:15—Georgia Wildcats
- 8:30—Binell Pick-ups (NBC)
- 8:45—Physical Exercises
- 9:15—Fashionette
- 9:30—Beautiful Thoughts (NBC)
- 9:45—Premium Man
- 10:00—Live Stock Reports; Piano
- 10:15—A. & P. Orchestra
- 10:30—Colonel Goodbody (NBC)
- 10:45—David Mystery's Chef (NBC)
- 11:00—Mrs. A. M. Goodins (NBC)
- 11:15—Ramona
- 11:30—Through the Looking Glass (NBC)
- 11:45—River; Weather; Time News—Tuxedo Entertainers
- P. M.
- 12:15 P. M.—Pat Barnes (NBC)
- 12:30—Hotel Gibson Orchestra
- 12:45—Marketa's Live Stock Reports
- 1:00—National Farm and Home (NBC)
- 1:30—Bernie Cummins' Orchestra
- 2:00—Ohio School of the Air
- 2:30—Original Farm and Home (NBC)
- 3:00—Three Doctors (NBC)
- 3:45—Tink, Tack, Toe
- 4:00—A. & P. Orchestra
- 4:30—Organ Matinee
- 5:00—Matinee Story Hour (NBC)
- 5:30—Los Vaqueros del Ramons
- 5:45—Little Orphan Annie (NBC)
- 6:00—Old Man Malinck
- 6:15—The Chatter
- 6:30—The Panama Canal—Herbert A. Dangel
- 6:45—Lowell Thomas (NBC)
- 7:00—Amos 'n' Andy (NBC)
- 7:15—Gayettes Orchestra, Odette Myrtill (NBC)
- 7:30—Famous Beauties of History
- 7:45—Bernie Cummins' Orchestra
- 8:00—Armstrong Quakers (NBC)
- 8:15—Vincent Lopez and his Valvolina
- 8:30—Werk Pubble Blowers
- 9:00—Marshall House Musical Memories
- 9:30—Great Personalities (NBC)
- 10:00—Chevrolet Chronicles
- 10:30—Variety
- 10:45—Bob Beeshall Sports Slices
- 11:00—Van Camp Program
- 11:30—Crimelights
- Midnight—Hotel Gibson Orchestra
- 12:30—Bernie Cummins' Orchestra

WSAI (225m.—1330 kc.)

- 8:00 A. M.—Gene and Glenn (NBC)
- 8:15—McCormick's Fiddlers
- 9:15—Records
- 9:15—Odas Maddox, banjo
- 9:30—Records
- 9:45—A. & P. Program (NBC)
- 10:00—Mrs. Blake's Radio Column (NBC)
- 10:15—Records
- 11:00—"Your Child"—Dr. Ella Oppenheimer (NBC)
- 11:15—Radio Household Institute (NBC)



hizzoner "Professor" Freddie Miller his nibs "Baron" George Lloyd

The RB ARISTOCRATS of HUMOR and SONG

Time changed to

8 P.M.

Monday, Tuesday, Wednesday, Thursday and Friday Nights Station

WKRC

TUNE IN!

By popular request, the Professor and the Baron will now entertain you at 8 o'clock each evening (instead of 6:45). Listen for the **REB CLOTHES PRIZE AWARD CONTEST!**

TUNE IN!

The Rg Clothing Co.

EST. 1903 MANUFACTURING RETAILERS

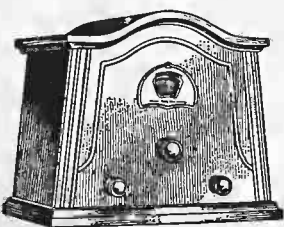


"What! You haven't been to Europe?"

"Here you are, folks . . . Europe and back, as often as you like . . . for \$23.95! Steamer? Tush, tush! Go via Stewart-Warner Short Wave Converter!"

The Professor (Freddie Miller) and the Baron (George Lloyd), between broadcasts spend practically all their time dashing about the continent on a

STEWART-WARNER SHORT WAVE CONVERTER



\$23.95 Complete with tubes

The Stewart Warner Short Wave Converter makes any set a short wave set. Hear the police calls. Listen to ships at sea. Tune in London, Paris, Rome! Travel all over the globe by radio . . . and with a simple twist of the knob return home. Attach to any A. C. set, and convert it at will to a short wave receiver.

AUTO-RAD SUPPLY CO.

COURT AND SYCAMORE

Cherry 8234

BEN BERNIE



"The Old Maestro" and His Orchestra offer you A Full Half Hour of Mirth and Music

on the **BLUE RIBBON MALT PROGRAM** TONIGHT at 9 Eastern Time

WKRC and Columbia Stations

Look—

The oldest radio repair shop in Cincinnati. We will call on your home, inspect your radio, tell you your tuhos and furnish an estimate of the cost on any make set for

75c

We are the originators of this service. Information gladly given for the asking. Ask us about **THE STEWART WARNER SHORT WAVE CONVERTER.**

UP-TOWN RADIO SHOP

WILLIAM THREM, Prop.
68 East McMicken
Cherry 7895

Letter Box

"What J. K. R. said in a recent number of the Radio Dial about WSAI and the Radio condition in general, has my full approval.

The educational value and entertainment of almost all stations is on the constant decline. Trash! Trash! And still some more trash! It's sickening to hear the same thing over and over again.

I am not narrow minded and know that there are more different tastes than broadcasting stations. One likes classic, the other jazz. That's perfectly all right, but why don't you get together and tell the Federal Radio Commission to get their cultivator out and go through the Radio field, not only once, but twice. That may help a little to kill the weed."

E. S., Cincinnati.

"As a large number of the Dial readers are colored people, why not have the pictures of Murdock Williams and the Mills Brothers in your paper? What has become of Harlan of the Ralph and Harlan team?"

J. H., Cincinnati.
Harlan has been singing with Murray Horton's band at WLW. See Page 6 for Mills Brothers.

For Mrs. P. P. T. Wilmore, Ky. Real folks are on WLW at 10:30 p. m. Mondays.

For E. F., Cincinnati. Natalie Giddings (with a final "s") and Pauline Gidding Unger are strangers to each other. Thanks for the implied compliment to the editor.

For E. R., Latonia. Tommy Atkins of WLW has no picture; is any one of a half dozen pianists, organists and other musicians who double on programs with which they don't care to be identified.

"As soon as I receive my copy of Radio Dial I take a pencil and start to read, marking on the program pages the features that will interest any of the family. Any that are not on local stations I mark in the space with the frequency on which it is broadcast. I also save all my copies for future reference."

MRS. E. E., Dayton, O.
Tip to industrious dialers.

WSAI Tuesday, November 24
11:30—Records
Noon to 12:15—G. E. Home Circle (NBC)
12:30 P. M. to 1:00—Live Stock Reports
3:00—Woman's Radio Review (NBC)
4:00—Records
4:15—Crowley Dealers' Salute
7:00—Prime Albert Program (NBC)
7:45—The Trials of the Goldbergs (NBC)
8:00—Blackstone Plantation (NBC)
8:30—Goodyear Tire Program (NBC)
9:30—McKesson Musical Magazine (NBC)
9:30—Puller Brush Man (NBC)
10:00—Lucky Strike Dance (NBC)
11:00—Netherland Plaza Orchestra

WABC (860 kc.) CBS
P. M.
6:00—Hotel Tatt Orchestra
8:00—Mills Brothers
10:30—Beauregard
11:00—Ernie McDougner's Cuban Orch.
11:15—Jack Miller
11:30—Leon Belasco's Orchestra
11:45—Nocturne
Midnight—Romanelli's Orchestra
A. M.
12:30—Asbury Park Orchestra
1:00—Hotel Bossert Orchestra
1:30—Roxeland Ballroom Orchestra

WEAF (660 kc.) NBC
P. M.
6:00—Waldorf-Astoria Orchestra
6:30—Ralph Kirby (also WENR)
11:00—Marion Harris, organ (WGXY)
11:15—Jesse Crawford, organ
11:30—Jack Denny Orchestra
Midnight—Rudy Vallee Orchestra (also WEAS)
A. M.
12:30—Joe Moss Orchestra (also WENR)

WJZ (760 kc.) NBC
P. M.
6:00—Raining Junior (also WJR)

33 CENTS
Is All You Pay For the Famous Original Steamboat Boat Store Coffee.
326 MAIN

WEAF Tuesday, November 24
6:15—Rameses Program—Pollock and Lavinhurst
6:30—Savannah Lincns Orchestra
7:30—Phil Cook (also WENR)
7:45—Berk of the News in Washington (also WHAS)
8:30—Hugger Harmonies (also WLS)
8:45—Sisters of the Skillet (also KDKA)
9:00—Household Finance (also KDKA)
10:00—Old Street Memories
10:30—Clara, Lu and Em (also KDKA)
10:45—Paris Night Life (also KDKA)
11:00—Slumber Music (also WJR)
11:15—Merry Melodies (also WLS)
11:45—Dream Pictures
A. M.
12:15—Paul Whiteman Orchestra

Wednesday, Nov. 25

WCKY (202m.—1490kc.)
7:00 A. M.—Alarm Clock Melodies
7:30—Band Selections
8:00—Kentucky Mountaineer
8:15—Merry Melodies (NBC)
8:30—Cherise (NBC)
9:00—Waltzes, old and new
9:30—Tunes in Blue
10:00—May Hale Martin Recipes (NBC)
10:15—Organ Melodies
10:30—Classic Hour
11:00—Mrs. A. M. Goudiss (NBC)
11:15—Musical Novelties
11:30—Claret Lickers
Noon—Luncheon Concert
12:25 P. M.—Live Stock Quotations
12:30—National Farm and Home (NBC)
1:15—Organ Melodies
2:00—Popular Dance Tunes
2:15—Moods in Indigo
2:30—Music Masters
3:00—Songs Musical
3:15—Matinee Melodies
3:45—Hawaiian Reveries
4:00—Rhythm and Rhyme
4:15—Songs of Today
4:30—Popular Requests
5:00—Bud, Les and Jim
5:15—Italian Srenaders
5:30—Merry Trio
5:45—Lena Pope, soprano
6:00—Story Book Hour
6:30—Twilight Organ Reveries
6:45—Crazy News Files
7:00—Amos 'n' Andy (NBC)
7:15—Sanders Trio
7:30—Skillet Lickers
7:45—College Memories (NBC)
8:15—Guy Robertson, baritone (NBC)
8:30—Earl Arnold's Orchestra
9:00—Sundoggers
9:30—Gormie and Willie
10:00—Rochester Civic Orchestra (NBC)
10:30—Clara, Lu and Em (NBC)
10:45—Edna Wallace Hopper Varieties
11:00—Duke, his Uke and Sisters
11:15—Kapua's Hawaiians
11:30—Vincent Lopez Orchestra (NBC)

WFBE (250m.—1200 kc.)
7:00 A. M.—Break of Day
7:15—Musical Clock
7:30—Blatney Party
8:30—Concert Hour
9:00—Our Daily Thought
9:15—Organ Recital
9:30—College Tunes
9:45—Hawaiian Dreams
10:05—Dot: Bright Singing Program
10:20—String Ensembles
10:35—WFBE-RKO Theatre Party
10:50—Mrs. Evans' Questions and Answers
11:00—Shopping with Betty and Bob
11:15—Mornning Serenade
11:30—Housewives' Frolic
Noon—Happy Lunch
12:15 P. M.—What's Doing in Cincinnati
12:30—How It Began
12:45—Luncheon Melodies
1:00—Around the Clock
1:15—Story Telling Time
1:30—Slumber Songs
2:00—Chas. Daunt, tenor
2:15—Waltz Time
2:45—Afternoon Melodies
3:15—Bill Reich's Cincinnati Panthers
3:30—Vine Street Foot Clinic
3:45—Julius Monk
4:00—Venetian Memories
4:30—Tea Time Tunes
5:00—Dedication Program

Who do you suppose is reading "STEPS TO HAPPINESS"?
Everyone having good sense, of course.
"STEPS TO HAPPINESS" may increase the cents in your purse to get a little more sense in your head. "What? You don't believe that! Then just buy a copy of this book and prove it to yourself."
Price 35c
Order direct from
STEPS TO HAPPINESS
Post-office Box 696 Cincinnati, Ohio

WATCH REPAIRING
Any watch cleaned or main spring replaced for only—
75c
Expert workmanship, years of experience, work fully guaranteed.
E. Coleman
38 Pickering Bldg., 5th and Main

WFBE Wednesday, November 25
5:15—The Pirates' Club
5:30—Galvano and Cortez
5:45—Sports Program
6:00—Rosevelt Theatre Party
6:15—Novelty Notes
6:30—Julius Seis
6:45—Dancing Band Travelogue
7:00—Dinner Music
7:15—Post Question Box
7:30—Original Bold Sport Review
7:45—Ohio
8:00—Hub Clothing Co. Players
8:15—Newport Finance Program
8:30—Covington and Herah
8:45—Dey Riders Health Hints
9:00—Lucky Boys
9:15—Western Hills Commission
10:00—WFBE Vaudeville Show
10:15—Dry Ridge Health Hints
10:30—Dream Fantasy

WKRC (545m.—550 kc.)
6:45 A. M.—Sunrise Worship
7:45—Gladya Cates, Organist
8:00—Roland Gainer Mountain Rangers
8:15—Grab Bag Boys
8:45—The Old Dutch Girl (CBS)
9:00—His Dees Hot Water Heater
9:15—Super Maid Program
9:30—Consolidated Merchants Program
10:00—The Oval Feature (CBS)
10:15—Wanda Wagoner's Grammette Tully
10:45—Julius Hays, Household Hints
11:15—Musical Alphabet (CBS)
11:45—Jane Grey and "Kampf, the Jeweler, Artist"
Noon—Synod Program
12:15 P. M.—Christmas Tours Period
12:20—Kentucky World Tour
12:30—Cincinnati Horticultural Program
1:00—Kaiser Pharmaceutical Program
1:15—Farm Network (CBS)
2:00—Pvot Program
2:15—Burke-Bass Organ Melodies
2:30—American School of the Air (CBS)
3:00—Vi-Zey Request Program
3:15—Salon Orchestra (CBS)
3:30—Arthur Jarrett (CBS)
3:45—Radio Television Program
4:00—Coldlaw Tenor
4:15—U. S. Navy Band (CBS)
4:45—Wabbe Fuel Program
5:00—A. O. Rust—Happy Feet
5:15—Uncle Ollie's Kermel Gang (CBS)
5:30—Cincinnati Trade School Program
5:45—Hub Clothing Company Music
6:00—Re-Mu—Pat Gillick, Organ
6:15—Sports Review, Stocks
6:30—Hotel Tatt Orchestra (CBS)
6:45—Reis and Dunn (CBS)
7:00—Wrigley—Myrt and Marge (CBS)
7:15—Cremo—Bing Crosby (CBS)
7:30—Baker Bar—Bawell Sisters (CBS)
7:45—Cameo Quarter Hour (CBS)
8:00—R. B. Clothes—Grab Bag Boys
8:15—Singing Sam, Barbasol Man (CBS)
8:30—La Polina—Kate Smith (CBS)
8:45—The Old Wurlburg Malt Program
9:00—Gold Medal Fast Freight (CBS)
9:30—Eno Crime Club (CBS)
10:00—Vitality Personalities (CBS)
10:15—Weed Tire Chain Program (CBS)
10:30—Columbia Concerts Program (CBS)
10:45—Christmas Tours
10:50—Kentucky World Tour
11:00—Time, Weather, Sports Review
11:15—Pvot Program
11:30—Pat Gillick, Organist
Midnight—Eddie Duchin's Orch. (CBS)
12:30:1 a. m.—St. Moritz Orch. (CBS)

WLW (428m.—700 kc.)
6:30 A. M.—International Fiddlers
6:45—Musical Exercises
7:15—Happiness Kids
7:30—Organ, Arthur Chandler, Jr.

7:00 P. M.
over
WKRC
Tune in. Something different. Gipping heart story of TWO SHOW GIRLS. Music... Dancing... Song... Mystery... Thrills...
Myrt and Marge
WRIGLEY'S

WLW Wednesday, November 25
7:45—Jolly Bill and Jane (NBC)
8:00—Morning Devotions
8:15—Georgie Wildcats
8:30—Bixie Pick-ups (NBC)
8:45—Physical Exercises
9:00—Musical Etching
9:15—Theodora Lee Peare, graphologist
9:30—Beautiful Thoughts (NBC)
9:45—Art Talk
10:00—Live Stock Reports; Piano
10:15—A. P. Orchestra
10:30—Colonel Goodbody (NBC)
10:45—Marley Personality Perfumes
11:00—Charis Morning Musicale
11:15—Talk on Mouth Hygiene
11:25—Ramona
11:45—River; Weather; Time
Noon—Seger Ellis
12:15 P. M.—Pat Barnes (NBC)
12:30—Hotel Gibson Orchestra
12:45—Markets. Live Stock Reports
1:00—National Farm and Home (NBC)
1:30—Bernie Cummins' Orchestra
2:00—Ohio School of the Air
3:00—Plantation Days
3:30—Three Doctors (NBC)
3:45—Eick, Tack, Toe
4:00—A. & P. Orchestra
4:30—Organ Matinee
5:00—Chats with Peggy Winthrop (NBC)
5:15—Mouth Health (NBC)
5:30—Los Vaqueros de Ramona
5:45—Little Orphan Annie (NBC)
6:00—Old Man Sunshine
6:15—The Chatter
6:30—Dr. Glenn Adams' Dog Talk
6:45—Lowell Thomas (NBC)

WLW Wednesday, November 25
7:00—Amos 'n' Andy (NBC)
7:15—John Ruskin Dance Orchestra
7:30—Bernie Cummins' Orchestra
8:00—R. F. D. Hour
8:15—Remington Rhythm Rounders
8:30—Jack Frost Melody Moments (NBC)
9:00—Sberlack Holmes (NBC)

Call AVon 3095
When your radio goes wrong, have
RADIO ENGINEERS
Fix It
Rates Low
Expert Service
Best Results
JAMES FRENKEL LEON BASS

WORLD WIDE RADIO RECEPTION
Now Stewart Warner brings you the supreme triumph in radio. Listen to all your favorite U. S. programs or, if you wish, you can listen in on the world.
Trade in your old radio. Liberal allowance will be made.
Complete **\$87.50** with Tubes
Easy Credit Terms
S. Immerman
1221 Main St., Cherry 7304

Hear!
"The Most Helpful Hearing Aid Science Has Yet Invented" . . . SONOTONE.
Private demonstration—no charge—no obligation. A "miniature instrument of the finest precision." Button-like ear piece that nestles snugly in the ear. Clear, mellow tone. Amazing power.
Phone MAIN 8030 for a demonstration in your home.

GIBSON OPTICAL CO.
DR. F. E. REUSCH—OPTOMETRIST
430 Walnut St. Near Hotel Gibson
Opposite 5th St.

Newton
RACE STREET ABOVE SIXTH
Smoker Reading Lamp
You will find it most convenient and comfortable to lounge with this smoker lamp at your elbow, the shade tilted while you read your favorite magazine or newspaper—
Red, Green or Black—tilting shade—
\$2.98 Complete
Lounge Lamp
with tilting shade
quite effective in red, green or black with banded shade to harmonize—
\$1.49 Complete
(Shades must be taken with bases delivered)
Visit our Gift Section—\$1 to \$5

WLW Wednesday, November 25
9:30-Dutch Masters Minstrels (NBC)
10:15-Variety
10:30-Crosley Auto-Stokers
10:45-Bob Newhall Sports Slices
11:00-Sam Camp Program
11:15-Michael Hauert's Orchestra
12:01-Hotel Gibson Orchestra
12:30-Bernie Cummins' Orchestra

WSAI (225m.—1330 kc.)

8:00 A. M.—Gene and Glenn (NBC)
8:15-McCormick's Fiddlers
8:45-Records
9:15-Dr. Royal S. Copeland (NBC)
9:30-Records
9:45-A. & P. Program (NBC)
10:00-Mrs. Blake's Radio Column (NBC)
10:10-Jane Grant's Secro Hour (NBC)
10:30-National Home Hour (NBC)
11:00-Kneeling Up With Daughter (NBC)
11:15-Radio Household Institute (NBC)
11:30-Records
12:05 to 12:15—G. E. Home Circle (NBC)
12:30 P. M. to 1:00—Live Stock Reports
1:00—Crosley Auto-Stokers (NBC)
1:00—Mary Steele, contralto
4:15-Crosley Dealers' Salute
4:30-Records
5:00-Sam Wilson, baritone
5:15-Records
5:25-Civil Service Talk
5:30-Records
6:00-Crosley Auto-Stokers
6:45-The Stebbins Boys (NBC)
7:00-Records
7:15-Campbell Soup Orchestra (NBC)
7:30-Prince Albert Program (NBC)
7:45-The Trials of the Goldbergs (NBC)
8:00-Snoop and Peep (NBC)
8:15-Olman & Arden, piano duo (NBC)
8:30-Cornell Concert (NBC)
9:00-Halsey-Stuart Program (NBC)
9:30-Palmolive Hour (NBC)
10:30-Coca Cola Program (NBC)
11:00-Hotel Gibson Orchestra

WABC (860 kc.) CBS

6:00 P. M.—Bill Schudt's Going to Press
8:00-The Columbians
8:45-Tasteful Gloom Chasers
11:00-Leon Belasco's Orchestra
11:15-Silent Singer
11:30-Noble State's Orchestra
11:45-Nocturne, with Ann Leaf
1:00 A. M.—Roseland Ballroom Orchestra
1:30-Dave Abrams' Orchestra

WEAF (660 kc.) NBC

6:00 P. M.—Waldorf-Astoria Orchestra
6:30-Bavarian Peasant Band
7:00-Bavarian Peasant Band
11:00-Nelle Revell
11:15-Jesse Crawford
11:30-Vincent Lopez Orchestra
11:45-Lew Conrad's Orchestra
12:30 A. M.—Paul Whiteman's Orchestra

WJZ (760 kc.) NBC

6:00 P. M.—Music Treasure Box
6:15-Ramones Program: Muriel Pollock and the Leimbauer, pianist
6:30-Vivian Black Orchestra
6:40-Unemployment Relief Committee: Senator Copeland
7:30-Phil Cook (also WENR)
7:45-Review it or Not! Ripley (also KDKA)
10:00-Rochester Civic Orchestra (also KDKA)
10:30-Clara, Lu and Em (also WJR)
10:45-Hollywood Nights
11:00-Slumber Music (also WJR)
11:30-Russ Columbo, songs
11:45-Charles White, organ
11:45-Clara, Lu and Em (also WJR)
11:45-Paris Night Life
11:45-Slumber Music
11:50-Russ Columbo, songs
11:55-Lew White, organ
12:15-Clara, Lu and Em (also WJR)
12:30 A. M.—National Farm and Home (NBC)
1:00-Piano Novelties
2:00-Rev. Charles W. Vandermuelen
2:15-Records in Indigo
2:30-Music Masters
2:30-Siesta Musicale
3:15-Mattinee Melodist
3:45-Hawaiian Revels
4:00-This un That
4:15-Stars of Today
4:30-Popular Requests
5:00-Cumberland Crooners
5:15-Maurice Thompson, baritone
5:30-Kapua's Hawaiians
5:45-Lucille Fox
6:00-Story Book Hour
6:30-Twilight Organ Reveries
6:55-Ayers News Flash

Thursday, Nov. 26

WKCY (202m.—1490kc.)

7:00 A. M.—Alarm Clock Melodies
7:30-Hawaiian Music
8:00-Eureka Weather Forecast
8:01-Kentucky Mountaineer
8:15-Morning Devotions (NBC)
8:30-Cheerio (NBC)
8:45-Waltzes, old and new
9:30-Tunes in Blue
10:00-Ray Perkins (NBC)
10:15-Vocal Varieties
10:30-Classic Hour
11:00-Mrs. A. M. Gaudiss (NBC)
11:15-Musical Novelties
11:30-Skillet Lickers
Noon—Lunch Concert
12:30 P. M.—Live Stock Quotations
12:30-National Farm and Home (NBC)
1:00-Piano Novelties
2:00-Rev. Charles W. Vandermuelen
2:15-Records in Indigo
2:30-Music Masters
2:30-Siesta Musicale
3:15-Mattinee Melodist
3:45-Hawaiian Revels
4:00-This un That
4:15-Stars of Today
4:30-Popular Requests
5:00-Cumberland Crooners
5:15-Maurice Thompson, baritone
5:30-Kapua's Hawaiians
5:45-Lucille Fox
6:00-Story Book Hour
6:30-Twilight Organ Reveries
6:55-Ayers News Flash

UNITED RADIO, INC. 1103 VINE STREET "The House of a Million Parts" We service and repair every make Radio. CHERRY 6531

WKCY Thursday, November 26

7:00-Amos 'n' Andy (NBC)
7:15-Tasteful Jesters (NBC)
7:30-Charlene
7:45-Famous Fallacies of Business (NBC)
8:00-Dixie Spiritual Singers (NBC)
8:15-Dulcie Markum
8:30-Earl Arnold's Orchestra
9:00-Blackstone Entertainment (NBC)
9:30-Terrific and Wildie
10:00-Medley Hour
10:30-Clara, Lu and Em (NBC)
10:45-Paris Night Life (NBC)
11:00-Skillet Lickers
11:30-Four Aces, male quartette
11:45-Cab Calloway and his Orchestra (NBC)

WFBE (250m.—1200 kc.)

8:00 A. M.—Break of Day
8:15-Tuesday Party
8:30-Concert Hour
9:00-Our Daily Thought
9:15-Organ Recital
9:30-Collie Porter
9:45-Morning Melodies
10:00-Thanksgiving Thoughts
10:35-WFBE-RKO Theatre Party
11:00-Thanksgiving Tunes
11:30-Housewife's Frolic
Noon—Happiness Club
12:30 P. M.—How It Began
12:45-Luncheon Musicale
1:00-Thanksgiving Story
1:30-Post Girls Trio
2:00-Charles Daunt, tenor
2:15-Serenade
2:30-Irish Boys
2:45-Forget-Me-Not
3:00-Dancing Menu
3:15-Frank Campbell
3:30-Collie Porter
3:45-Frank and Larry
4:15-Musical Gems
4:30-Neal's Blues Busters
4:45-With the Radio Masters
5:30-With Pablo Casals
5:45-Dance Melodies
6:00-Roosevelt Theatre Party
6:15-Musical Institute
6:45-Murdock Williams
7:00-Dinner Dance Music
7:15-Douglas Pinguely Trio
7:30-Original Bold Sport Review
7:45-Eimer and McCoy, pianist
8:00-Mansion Dance Orchestra
8:30-Eather Covington and Jack Herath
8:45-The Post Tenor
9:00-Irish Boys
9:15-Classical Gems
10:00-Mansion Dance Orchestra
10:30-Dream Fantasy

WKRC (545m.—550 kc.)

6:45 A. M.—Sunrise Worship
7:45-Gladys Catron, Organist
8:00-Roland Gaines' Mountain Rangers
8:15-Cash Bag Boys
8:45-Variety
9:00-Julia Hayes Household Hints
9:30-Consolidated Merchants Program
10:00-Dr. Copeland-Health Talk (CBS)
10:15-Machine Age Housekeepers (CBS)
10:30-Thanksgiving Services
10:45-Barbara Gould Beauty Talk (CBS)
11:00-Thanksgiving Services
12:30 P. M.—Cincinnati Merchants
1:00-Pyol Program
1:15-Football Souvenir (CBS)
1:30-Pennsylvania vs. Cornell Football (CBS)
4:30-Wedl Pupp Program
4:45-Alma & Dopeke Child's Program
5:00-Christmas Trivia
5:05-Kentucky World Tour
5:15-Radio Television Institute
5:30-Cincinnati Trade School
5:45-Sweetheart Quarter Hour (CBS)
6:00-Re-NU—Pat Gillick, Organist
6:15-Sports Review: Stocks
6:30-Hotel Bessert's Orchestra (CBS)
6:45-Connie Boswell (CBS)
7:00-Wrigley-Myrt and Marge (CBS)
7:15-Cremo-Bing Crosby (CBS)
7:30-Kaltenborn Edits the News (CBS)
7:45-Camel Quarter Hour (CBS)
8:00-Public Dental Period
8:05-Mills Brothers (CBS)
8:15-Abe Lyman Orchestra (CBS)
8:30-La Palina-Kate Smith (CBS)
8:45-Angelo Parini—"Your Child" (CBS)
9:00-Horseshoe Gardens-Curr Burns
9:30-Love Story Program (CBS)
10:00-Hertha Schaffner Hour (CBS)
10:30-Peters Parade (CBS)
10:45-Christmas Tours
10:50-Kentucky World Tour
11:00-Time, Weather, Sports Review
11:15-Pyol Program
11:30-Pat Gillick and His Gang
11:45-Guy Lombardo and His Orchestra (CBS)

WLW (428m.—700 kc.)

6:30 A. M.—International Piddlers
7:00-Physical Exercises
7:15-Happiness Kids

M. & T. RADIO SHOP AL THREM, Prop. RADIOS TESTED IN YOUR HOME Repeating Radio's Satisfaction Guaranteed As Near As Your Telephone 1735 Elm (at Findlay Market) Parkway 4573

CORRECT TIME WKRC TWICE DAILY GOURTESY OF Lange 435 VINE—CAREW TOWER REMEMBER—YOUR GRANDMOTHER'S WEDDING RING CAME FROM LANGES.

WLW Thursday, November 26

7:30-Orgy Program, Arthur Chandler.
7:45-Jolly Bill and Jane (NBC)
8:00-Morning Devotions
8:15-Greogian Wildcats
8:30-Bessell Picups (NBC)
8:45-Physical Exercises
9:00-Health Talk, Dr. Carl Wilebach
9:10-Organ Intertude
9:15-Netherland Plaza Chof
9:30-Beautiful Thoughts (NBC)
9:45-Florence Frey Beauty Workshop
10:00-Live Stock Reports; Piano
10:15-A. & P. Orchestra
10:30-Colonel Goodbody (NBC)
10:45-Dave Mystery Chof
11:00-Moto-Ironing Time
11:15-Hygiene
11:25-WLW Stars
11:45-River; Weather; Time
Noon—Segar Elia
12:15 P. M.—Pat Barnes (NBC)
12:30-Hotel Gibson Orchestra
12:45-Markets; Live Stock Reports
1:00-National Farm and Home (NBC)
1:30-Bernie Cummins' Orchestra
1:45-Nebraska-Pittsburgh Football Game (NBC)
4:00-A. & P. Orchestra
4:30-Organ Matinee
5:00-Brazillia Coffee (NBC)
5:30-Edna Wallace Hopper
5:45-Little Orphan Annie (NBC)
6:00-Old Man Sunshine
6:15-The Chatter
6:30-Radio News Reel of Hollywood
6:45-Lowell Thomas (NBC)
7:00-Amos 'n' Andy (NBC)
7:15-Crosley Auto-Stokers
7:30-Bernie Cummins' Orchestra
7:45-Shoeing the Blues Away
8:00-Hotel Gibson Orchestra
8:15-Rin-Tin-Tin Thriller (NBC)
8:30-Hollingsworth Hall
8:45-Sisters of the Skillet
9:00-Great Composers
9:30-Maxwell House Ensemble (NBC)
10:00-A. & P. Gymps (NBC)
10:30-Variety
10:45-Bob Newhall Sport Slices
11:00-Van Camp Program
11:30-Crosley Theatre of the Air
11:45-Hotel Gibson Orchestra
12:30-Bernie Cummins' Orchestra

WSAI (225m.—1330 kc.)

8:00 A. M.—Gene and Glenn (NBC)
8:15-McCormick's Fiddlers
8:45-Records
9:15-Odas Maddox, banjo
9:30-Records
9:45-A. & P. Program (NBC)
10:00-Mrs. Blake's Radio Column (NBC)
10:15-Records
10:30-Crosley Theater Program
11:00-Records
Noon to 12:15—G. E. Home Circle (NBC)
1:45-Cornell-Penn. University Football Game (NBC)
3:00-Game of the Radio Review (NBC)
4:00-Mona Motor Organ Recital
4:30-Crosley Dealers' Salute
4:45-Records
5:00-Cross Talk
5:15-Records
5:30-What Happened to Jane (NBC)
5:45-Records
5:55-Better Business Bureau Talk
6:30-James G. McDonald (NBC)

IF IT'S ELECTRIC WE CAN FIX IT PRUES ELECTRIC AND RADIO SHOP 408 York Street South 2751, NEWPORT, KY.

DON'T GIVE UP... those evenings at home to hit-or-miss radio listening. Millions of dollars' worth of new, fresh, more-delightful-than-ever programs are being announced with the opening of "radio season."

LET RADIO DIAL guide you to YOUR choice in radio entertainment—get the pick of what's on the air. Here is all the information on the new programs, time changes, plus those breezy articles that give you the "human" side of the stars. The coupon brings RADIO DIAL to your door for six months for only \$1. Send it in today.

RADIO DIAL 22 E. 12th St. Cincinnati, Ohio

Send me RADIO DIAL for 6 months. Here's my dollar. [] New Subscriber [] Old Subscriber Name Address

WSAI Thursday, November 26

6:45-The Stebbins Boys (NBC)
7:00-Vermont Lumberjacks (NBC)
7:15-Campbell Soup Program (NBC)
7:30-Prince Albert Program (NBC)
7:45-The Trials of the Goldbergs (NBC)
8:00-Fleischman Hou (NBC)
9:00-Arco Dramatic Musical (NBC)
9:30-Slack Holmes Adventures (NBC)
10:00-Lucky Strike Dance (NBC)
11:00-Hotel Gibson Orchestra

WABC (860 kc.) CBS

6:00 P. M.—Frank Ross, songs
6:15-Hotel Bossert Orchestra
6:45-Connie Boswell
9:00-Eugene Ormandy Quartet
10:45-Pray and Praggitt
11:00-St. Moritz Orchestra
11:15-Jack Miller
11:30-Leon Belasco's Orchestra
12:30 A. M.—Noble State's Orchestra
1:00-Dave Abrams Orchestra
2:30-Roseland Ballroom Orchestra

WEAF (660 kc.) NBC

6:00 P. M.—Waldorf-Astoria Orchestra
6:30-The World Today, James G. McDonald
7:15-Campbell Orchestra
11:00-Ralph Kirby, baritone
11:30-Con-Sanders Orchestra
11:30-Jesse Crawford, organ
11:45-Cab Calloway's Orchestra
11:45-Clara, Lu and Em (also WJR)
12:30 A. M.—Joe Moss Orchestra

RADIO REPAIR SPECIALIST Guaranteed Service on All Makes of Radio LESTER E. YOUNG (Formerly Kraus' Inspector) PHONE KIRBY 4435

CALL Kirby 1253 Guarantee Radio Service at the right price. We call anywhere in the city without additional charge. Cincinnati Radio Service Co.

If you listen to the radio you listen to the BALDWIN For it is the careful choice of more than 200 broadcasting stations The Baldwin Piano Company 142 W. Fourth Street Parkway 7800 OPEN EVENINGS

FACTORY SALE SAVE 1/3 to 1/2

NINE TUBES Four Screen Grids Hi-Mu Tubes Capacity Coupling Super Dynamic Speaker Tone Control Static Modulator Built-in Aerial \$39.50 COMPLETE FREE FACTORY SERVICE FREE DELIVERY FREE INSTALLATION FACTORY GUARANTEE OPEN ALL DAY SUNDAY AND EVERY EVENING

FREE! FREE Electric Lighter To Everyone purchasing one of these Special Models A novel and attractive gift for our radio friends. A cigar and cigarette lighter patterned after microphones used in broadcasting stations. Gold finished case. Complete with silk cord and plug. Operates on AC or DC house current. Absolutely Free to everyone purchasing one of these special models. Just clip this ad and bring it along with you.

MIDWEST RADIO CORP. OPEN EVENINGS UNTIL 9 P. M. 909 Broadway OPEN ALL DAY SUNDAY