

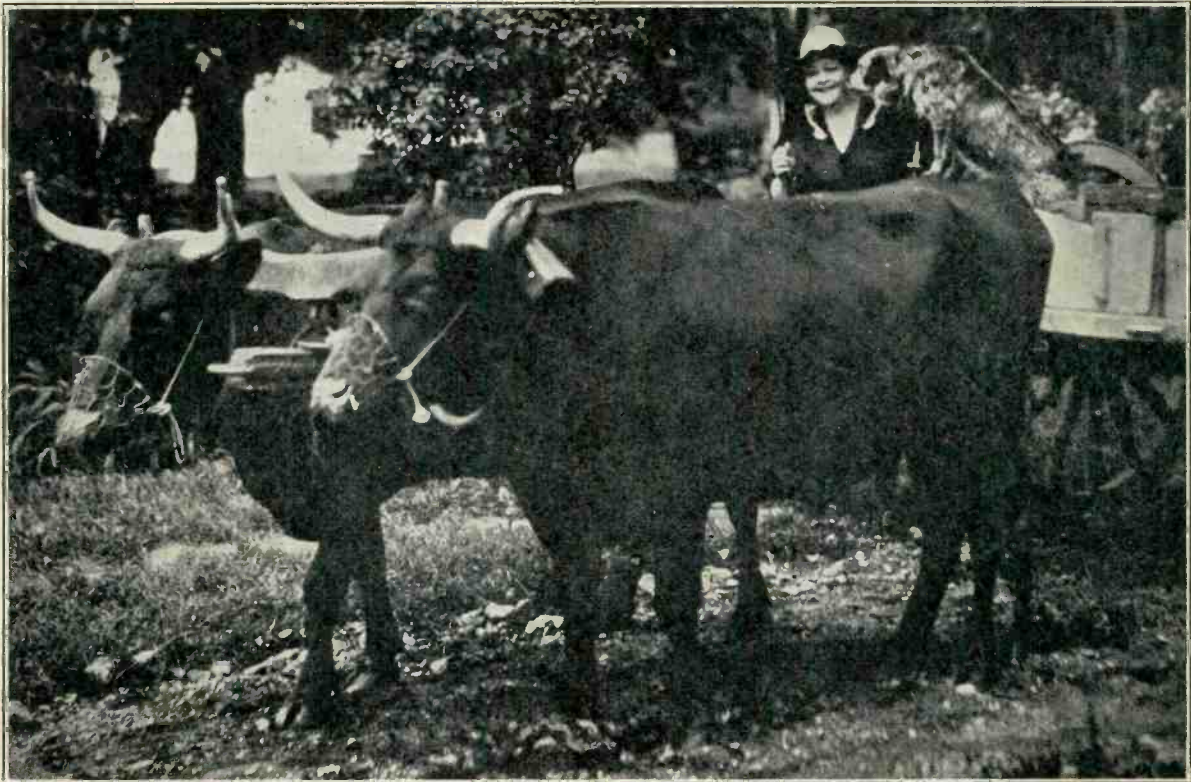
New 1930

Now 15c.

The RADIO DIAL

REGISTERED U. S. PATENT OFFICE

International Radio Atlas — Complete Station Log



VAUGHN DE LEATH — THE ORIGINAL RADIO GIRL

Known to millions as "The Voice of Firestone" contralto and world famous for crooning songs that touch the heart, chiefly because she loves life shorn of its extras and non-essentials. An example is her farm life at "Hitching Post" outside of Easton, Conn., where she lives like and with simple folk even to the use of oxen for farm work.

DE LUXE RADIO PARLOR

ZENITH, BRUNSWICK, LYRIC, MAJESTIC, BALKEIT

Buy Your Radio in a Radio Store

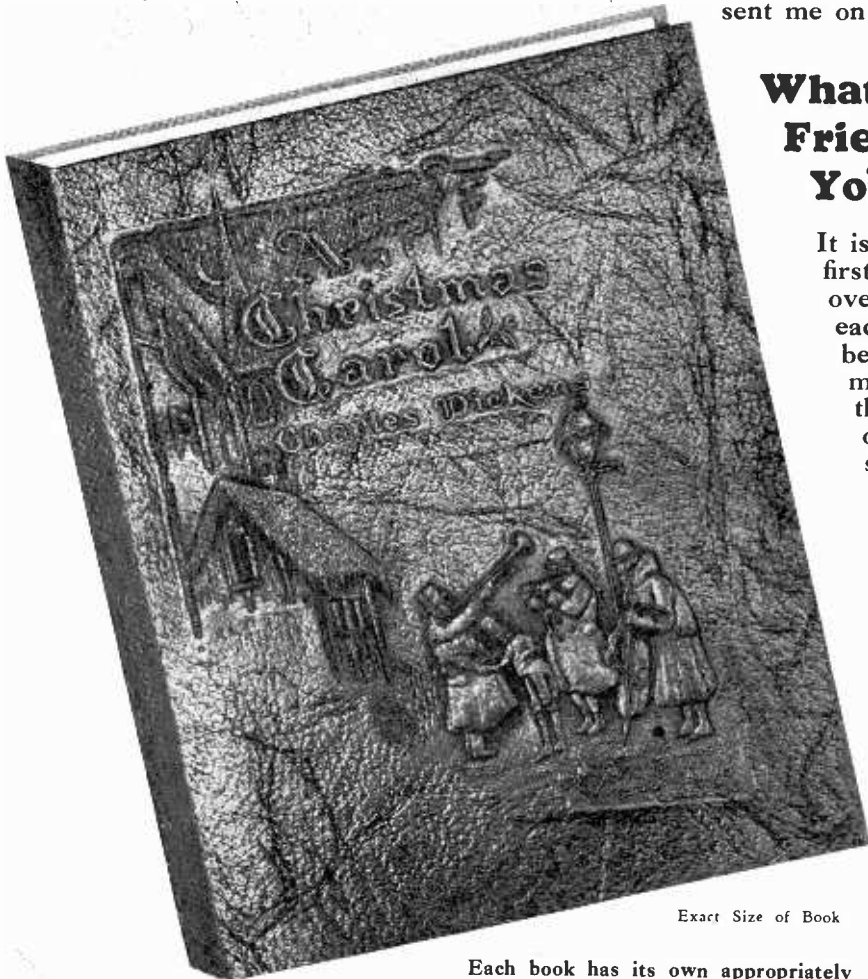
1091 East Main Street

BRIDGEPORT, CONN.

A Long Life or a Short One

I AM the *Christmas Greeting Card*. I am hurriedly bought, addressed and mailed. I am looked at, laid down, looked at again, and then completely forgotten. It's a short life; why must I die so soon?

I AM the *Christmas Greeting Set*, the coming vogue in conveying greetings. I am addressed and mailed and received with joy, for I am so unusual. I am preserved for years, always a reminder of the thoughtful person that sent me on my way.



Exact Size of Book

Each book has its own appropriately designed card and mailing box.

What Do Your Friends Think of Your Christmas Card?

It is quite probable they have the same first thought that you have when looking over the many greeting cards received each Christmas season—"I haven't been forgotten" or "It's nice they remembered me." But how long will that greeting remain in their memory? Not very long, you can be sure, because, after all, it was a card, one of very many.

The discriminating person of today turns to the newest in Christmas greetings, the *Christmas Greeting Set*. A beautiful pocket-size book, bound in grained and embossed Artcraft, a greeting card of unusual charm and a holly mailing box make up this Christmas Greeting Set. Charles Dickens' immortal story, "A Christmas Carol," and "Old Christmas" by Washington Irving are the titles which have been selected for this the most unusual of Christmas Greetings.

Twelve Complete Sets \$2.98

Do not wait until the last minute to purchase your Christmas Greetings. Save yourself the bother and fuss of examining conventional cards. Send for this remarkable offering today. The exquisite charm of these Christmas Greeting Sets will lift your greeting out of the commonplace. Consider the remarkably low cost! It is indeed difficult to believe that such a value can be offered. Twelve complete sets, six of each title, cost but \$2.98 plus a few cents postage.

RIVERSIDE PRESS
160 Varick St.
New York, N. Y.

Please send cartons of twelve Christmas Greeting Sets, for which I will pay postman \$2.98 per carton plus postage.

Name

Address

Your Money Returned If Not Satisfied

Do not send any money with your order. Pay the postman when the sets are delivered. Examine them, and if after five days you are not delighted with your purchase return them and your money will be refunded.

Riverside Press

160 Varick Street New York, N. Y.



MME. ZINAIDA NICOLINA, *Soprano*



Mlle. ELIENA KAZANOVA, *Violinist*



PETER BILJO'S BALALAIKA ORCHESTRA

Around the Samovar—C. B. S., Tuesdays 11 P.M. A program of real Russian music, folklore and legends by native musicians.

Evening Stars



S. L. ROTHAFEL (*Roxy*)
The Dean of Radio

MADELEINE MARSHALL, *Pianist*
A gifted musician of the first rank
who accompanies the Concert En-
semble "Around the World with
Libby"

MILTON J. CROSS
Premier Announcer, N.B.C.

Refer to Pages 20-21 for Time of All Programs



HENRY BURBIG, *Humorist*
A popular artist heard regularly in
a specialty number with the Ce-Co
Couriers

MILADY'S MIRROR
A program of interest to women,
every Tuesday, 11:30 A.M., C.B.S.

EVA LE GALLIENNE as "*Peter Pan*"
The Civic Repertory plays, di-
rected by Miss Le Gallienne, are
presentations of the C. B. S.

THE RADIO DIAL

International Radio Atlas—Complete Station Log

VOLUME III

OVER 60,000 CIRCULATION

NUMBER 3

THE following changes and additions to the official list of broadcasting stations have just been made public by the Federal Radio Commission.

WEAN—Providence, R. I., Fy., 780 (384.4).

WLBW—Oil City, Pa., owner, Radio-Wire Program Corporation of America.

WOKO—Poughkeepsie, N. Y., owner, Hudson Valley Broadcasting Co.

WRBL—Columbus, Ga., owner, David Parmer.

WSGP—Savannah, Ga., call changed to WTOC.

WSJS—Winston-Salem, N. C., Winston-Salem Journal Co., 1310 kilo. (228.9), 100 watts (new).

WWVA—Wheeling, W. Va., power 5000 watts.

KDFN—Casper, Wyo., Donald L. Hathaway, 1210 kilo. (247.8), 100 watts (new).

KFIO—Spokane, Wash., owner, Spokane Broadcasting Corp.

KFJI—Astoria, Ore., owner KFJI Broadcasters, Inc.

KFPY—Spokane, Wash., Fy., 1340 (223.9).

KFOD—Anchorage, Alaska. Strike out all particulars.

KFWC—Ontario, Cal., call changed to KFXM.

KMJ—Fresno, Cal., Fy., 1210 (247.9) power 100 watts.

KOAC—Corvallis, Ore., Fy., 550 (545.1).

KTAB—Oakland, Cal., Fy., 560 (535.4), power 500 watts.

KWBS—Portland, Ore., call changed to KVPE.

KWTC—Santa Ana, Cal., call changed to KREG.

KYA—San Francisco, Cal., owner, F. C. Dahlquist (receiver).

HERE'S SOME GOOD NEWS FOR YOU!!!

STARTING with this issue the price of The Radio Dial is 15 cents per copy. Yearly subscription (four issues, February, April, September, and November) for 50 cents. You may either send stamps, coin, check or money order to the radio dealer whose name appears on the front cover, who will be glad to enter your subscription or you may mail it direct to our executive offices.

The Radio Dial is in keeping with THIS DEALER'S thorough service to radio owners. It is, as you know, one of Radio's foremost magazines—the very best work of the kind obtainable. We believe this is the best opportunity a listener could get to keep abreast with Radio for a whole year. This splendid offer is made possible by the generous support of leading radio dealers everywhere who, working in co-operation with us, aim to provide their customers and friends with a thoroughly reliable and interesting book of radio information at a small cost. The Dealer does not ask a profit—he only seeks to serve you.

The Inquiry Division, an original and exclusive feature of The Radio Dial, first introduced in our last issue, has met with instantaneous success. Thousands of listeners have already availed themselves of the opportunity of securing information regarding programs that they are particularly interested in. Mother and Dad and the Kiddies will all find something for them in the new list on page 31. If you haven't used this service yet, don't fail to do so NOW. A minimum of effort is required, and everything is free.

Now turn to pages 20 and 21 for "What's on the Air Tonight." Start logging your favorite programs tonight and in the blank spaces where no chain program is shown write in some

CONTENTS

Frontispiece—Vaughn De Leath	
Around the Samovar.....	3
Evening Stars	4
Amos 'n' Andy	6
U. S. Broadcasting Stations— Listed by States and Cities....	7-14
Canada Broadcasting Stations— Listed by Provinces and Cities.	15
Elsa Gray	16
Short Wave Broadcasting Stations of the World	17
Map of U. S. and Southern Canada with Divisions of Standard Time	18-19
What's on the Air Tonight...	20-21
Map of Mexico, West Indies, Cen- tral and South America.....	22
Foreign Broadcasting Stations ...	23
Radio Map of the World—Com- parative Time and Distances...	24
Prague Broadcasting Frequency Plan	25
Channel Chart—Numerical Listing by Kilocycles	26-30
The Radio Dial—Inquiry Division.	31
Household Periods on the Air—	32
Index to Call Letters—U. S. and Canada Stations	33-44

local feature that you hear at that particular time. Enter your dial readings opposite all the programs you listen to so that you can come right back to them if you choose at any time. This is another exclusive and copyrighted feature of The Radio Dial offered to listeners for the first time by any publication, and we believe you will find it helpful in getting more enjoyment out of your radio.

THE EDITOR

HAROLD A. SIDEY, *Managing Editor*

MARTIN J. GARREN, *Circulation Director*

101 WEST 42nd STREET, NEW YORK CITY

Telephone: Bryant 6843

Representatives

Chicago: J. Polk, 1507 South Michigan Avenue
Philadelphia: Harry J. Lewis, 45 North Seventh Street
Detroit: B. J. Fitzner Co., 159 East Elizabeth Street
Cleveland: Prima Products Co., 12810 Penobscot Avenue
Kansas City, Mo.: Cannon Sales Co., 3916 Campbell Street
Toronto, Canada: Stanley F. Pearson, c/o Consolidated Press Ltd., 73 Richmond Street West

Baltimore: E. V. B. Edmond, 1241 N. George St., York, Pa.
Buffalo: A. A. Carlisle, 270 W. Genesee Street
Seattle: Jas. J. Backer Co., 1409 Syndicate Trust Bldg.
Dallas: Ray E. Simpson Co., Inc., 947 So. Lamar Street
Trenton: Kunnes Advertising Co., Front & Jackson Streets

Copyright 1929 by The Radio Dial, New York City

Amos 'n' Andy—The Comic Strip of the Air

By Dialer

WITHIN two years since this amusing pair of comedians first went on the air over station WMAQ, Chicago, they have achieved the most phenomenal success that has ever come to a radio artist. Unknown, without stage or movie background, Correll and Gosden have reached the front ranks of comedians and are known through their characters, Amos 'n' Andy, proprietors of the famous Fresh Air Taxicab Company, Incorporated, literally to millions and millions of radio listeners.

This amazing popularity rests upon the adventures of a lovable pair of darkies from Dixie, their love entanglements, and their business and club affairs, when they emerge into the business life of metropolitan Harlem. Correll and Gosden, the creators of Amos 'n' Andy, know the colored people of both the North and the South, and are able to portray them with a sympathy and understanding that but few actors have ever approached. While this homey, human drama involves many figures, all played by Correll and Gosden, Amos and Andy, naturally, are the two central characters.



AMOS



ANDY

Amos is a trusting, simple, unsophisticated darky with a high and hesitating voice, who says, "Ain't dat sumpin'," when he is happy or surprised, and stutters most enticingly when he is frightened or embarrassed. He loves Ruby Taylor, the daughter of the colored owner of a garage, and Andy gives him credit for no brains, but he is a hard, earnest worker and has a way of coming across with a real idea when ideas are most needed.

Andy, portrayed by Correll, is a domineering lazy fellow, who takes credit for all of Amos' ideas and efforts. He is always working on the books or resting his brains, and, according to Andy himself, everything depends on him. He browbeats Amos and he belittles him and he orders him around, but let anyone else pick on Amos and then look out! When his patience is taxed to the utmost he gives vent to his most famous expression, "T'se regusted."

This famous blackface comedy team may be heard nightly, except Tuesday, through the N.B.C. System at 11:00 o'clock (EST). Wherever they may be in vaudeville or personal appearances, the National Broadcasting Company picks them up for a fifteen-minute broadcast over the following associated stations:

WJZ	WBZ	WBZA	WHAM	KDKA	WJR	WLW	KYW	WMAQ
KWK	WDAF	WREN	WTMJ	KSTP	KOA	KSL	WRG	WEBC

U.S. BROADCASTING STATIONS

Listed According to States and Cities

Location Kilo.-Meters - Power - Owner - Station Readings

ALABAMA

Birmingham	1140 - 263. - 5000	Alabama Poly. Inst.	WAPI		
	930 - 322.4 - 500	Birmingham Br. Co.	WBRC		
	1310 - 238.9 - 100	Broyles Furniture Co.	WKBC		
Gadsden	1210 - 247.8 - 50	Chas. J. Black	WJBY		

ALASKA

Anchorage	1230 - 243.8 - 100	Anchorage Radio Club	KFQD		
Ketchikan	900 - 333.1 - 500	Alaska Radio & Service Co.	KGBU		

ARIZONA

Flagstaff	1420 - 211.1 - 100	Mary M. Costigan	KFXV		
Phoenix	620 - 483.6 - 500	Elec. Equip. Co.	KFAD		
	1390 - 215.7 - 500	Neilson Radio Supply Co.	KOY		
Prescott	1500 - 199.9 - 100	Miller & Klahn	KPJM		
Tucson	1370 - 218.8 - 100	Tucson Motor Ser. Co.	KGAR		
	1260 - 238.0 - 500	Robt. M. Riculfi	KVOA		

ARKANSAS

Blytheville	1290 - 232.4 - 50	Charles Leo Lintzenich	KLCN		
Fayetteville	1390 - 215.7 - 1000	Univ. of Arkansas	KUOA		
Hot Springs	1040 - 288.3 - 10000	Nat'l Park Ch. of Commerce	KTHS		
Little Rock	1500 - 199.9 - 100	Berean Bible Class	KGHI		
	890 - 336.9 - 250	1st Ch. of Nazarene	KGJF		
	1390 - 215.7 - 1000	Ark. Broadcast. Co.	KLRA		
McGehee	1310 - 228.9 - 50	Chas. W. McCollum	KGHG		
Siloam Springs	1340 - 223.7 - 50	Rev. L. W. Stewart	KFPW		

CALIFORNIA

Berkeley	1370 - 218.8 - 100	1st Cong. Church of Berkeley	KRE		
Beverly Hills	1170 - 256.3 - 500	R. S. MacMillan	KEJK		
Burbank	780 - 384.4 - 500	E. L. White	KELW		
Culver City	710 - 422.3 - 250	Los Angeles Br. Co.	KFVD		
El Centro	1200 - 249.9 - 100	E. Irey & F. Bowles	KXO		
Fresno	1200 - 249.9 - 100	The Fresno Bee	KMJ		
Hayward	1370 - 218.8 - 100	Leon P. Tenney	KZM		
Hollywood	950 - 315.6 - 1000	Warner Bros. Br. Corp.	KFWB		
	570 - 526.0 - 500	KMTR Radio Corp.	KMTR		
	1050 - 285.5 - 5000	Western Broadcast. Co.	KNX		
Holy City	1420 - 211.1 - 100	W. E. Riker	KFOU		
Inglewood	1120 - 267.7 - 500	Dalton's Inc.	KMIC		
Long Beach	1250 - 239.9 - 1000	Nichols & Warrinner, Inc.	KFOX		
	1370 - 218.8 - 100	C. Merwin Dobyns	KGER		

Location Kilo.-Meters - Power - Owner - Station Readings

Los Angeles	640 - 468.5 - 5000	E. C. Anthony, Inc.	KFI		
	1120 - 267.7 - 500	Echo Park Evan.	KFSG		
	860 - 348.6 - 250	Taft Radio & Br. Co., Inc.	KFQZ		
	1300 - 230.6 - 1000	Trinity Menodist Ch.	KGEF		
	1420 - 211.1 - 100	Ben S. McGlashan	KGFJ		
	900 - 333.1 - 1000	Don Lee, Inc.	KHJ		
	1000 - 299.8 - 1000	Pacific Dev. Radio Co.	KPLA		
	1300 - 230.6 - 750	Bible Inst. of Los Ang.	KTBI		
	780 - 384.4 - 1000	Pickwick Br. Corp.	KTM		
Oakland	930 - 322.4 - 500	Oakland Educ. Soc.	KFWM		
	790 - 379.5 - 7500	General Elec. Co.	KGO		
	1440 - 208.2 - 250	Warner Bros.	KLS		
	880 - 340.7 - 500	Tribune Pub. Co.	KLX		
	550 - 545.1 - 500	Asso. Broadcasters	KTAB		
Pasadena	1200 - 249.9 - 50	Pasa. Pres. Church	KPPC		
	950 - 315.6 - 1000	Pas. Star News Pub. Co.	KPSN		
Pomona	1200 - 249.9 - 100	James R. Fouch	KFWC		
Santa Ana	1500 - 199.9 - 100	Pacific Broadcast. Fed.	KWTC		
Santa Barbara	1500 - 199.9 - 100	S. Barbara Broadcast Co.	KDB		
San Diego	600 - 499.7 - 1000	Airfan Radio Corp.	KFSD		
	1360 - 220.4 - 250	Pickwick Br. Corp.	KGB		
San Francisco	610 - 491.5 - 1000	Don Lee, Inc.	KFRC		
	930 - 322.4 - 500	Radio Entertainments, Inc.	KFWI		
	1420 - 211.1 - 50	The Golden Gate Br. Co.	KGCC		
	1070 - 280.2 - 100	J. Brunton & Sons, Co.	KJBS		
	680 - 440.9 - 5000	Hales Bros. & The Chronicle	KPO		
	1230 - 243.8 - 1000	Pac. Broadcast. Corp.	KYA		
San Jose	1010 - 296.9 - 500	First Baptist Church	KQW		
Sacramento	1310 - 228.9 - 100	James McClatchy Co.	KFBK		
Santa Maria	1200 - 249.9 - 100	S. M. Valley R. R. Co.	KSMR		
Stockton	1100 - 272.6 - 50	E. F. Pepper	KGDM		
	1200 - 249.9 - 100	Portable Wireless Tel. Co.	KWG		
Westminster	1490 - 201.2 - 10000	Pacific-Western Br. Co.	KPWF		

COLORADO

Colorado Sps.	1270 - 236.1 - 1000	W. D. Corley	KFUM		
Denver	940 - 319. - 250	E. P. O'Fallon	KFEL		
	1310 - 228.9 - 100	Fitzsimmons Gen'l. Hosp.	KFUP		
	940 - 319. - 250	Pikes Peak Br. Co.	KFXF		
	830 - 361.2 - 12,500	General Elec. Co.	KOA		
	880 - 340.7 - 500	Pillar of Fire, Inc.	KPOF		
Dupont	560 - 535.4 - 1000	Reynolds Radio Co.	KLZ		

U.S. Broadcasting Stations Continued

Location	Kilo.	Meters	Power	Owner	Station	Readings
Edgewater	1310	—	228.9	—	50 KFXJ	
				R. G. Howell		
Fort Morgan	1200	—	249.9	—	100 KGEW	
				City of Ft. Morgan		
Greeley	880	—	340.7	—	1000 KFKA	
				Col. St. Teachers Col.		
Gunnison	1200	—	249.9	—	100 KFHA	
				Western State College of Col.		
Trinidad	1420	—	211.1	—	100 KGIW	
				Trin. Creamery Co., Inc.		
	1320	—	227.1	—	250 KGHF	
				C. P. Ritchie & J. E. Finch		
Yuma	1200	—	249.9	—	50 KGEK	
				Beehler Elec. Equip. Co.		

CONNECTICUT

Bridgeport	1190	—	252.0	—	500 WICC	
				Bridgeport Br. Sta., Inc.		
Hartford	1060	—	282.8	—	50,000 WTIC	
				Travellers Ins. Co.		
New Haven	1330	—	225.4	—	500 WDRC	
				Doolittle Radio Corp.		
Storrs	600	—	499.7	—	250 WCAC	
				Conn. Agri. College		

DELAWARE

Wilmington	1120	—	267.7	—	350 WDEL	
				WDEL, Inc.		
	1420	—	211.1	—	100 WILM	
				Del. Broadcasting Co., Inc.		

DISTRICT of COLUMBIA

Washington	630	—	475.9	—	500 WMAL	
				M. A. Leese Co.		
	1310	—	228.9	—	100 WOL	
				Amer. Broadcasting Co.		
	950	—	315.6	—	500 WRC	
				Radio Corp. of A.		

FLORIDA

Clearwater	900	—	333.1	—	1000 WFLA	
				Clearwater & St. P. C. of C.		
Gainesville	1470	—	204.0	—	5000 WRUF	
				Univ. of Florida		
Jacksonville	1260	—	238.0	—	1000 WJAX	
				City of Jacksonville		
Lakeland	1310	—	228.9	—	100 WMBL	
				Benforch Radio Stu.		
Miami Beach	560	—	535.4	—	1000 WIOD	
				Isle of Dreams Brdcastg. Co.		
Miami	1240	—	241.8	—	1000 WQAM	
				Miami Brdcastg. Co.		
Orlando	620	—	483.6	—	1000 WDBO	
				Rollins College		
Pensacola	1120	—	267.7	—	500 WCOA	
				City of Pensacola		
Tampa	620	—	483.6	—	1000 WDAE	
				Tampa Publishg. Co.		
	1210	—	247.8	—	100 WMBR	
				F. J. Reynolds		

GEORGIA

Atlanta	890	—	336.9	—	500 WGST	
				Geo. School of Tech.		
	740	—	405.2	—	5000 WSB	
				Atlanta Journal Co.		
Columbus	1200	—	249.9	—	50 WRBL	
				R. E. Martin		
Macon	890	—	336.9	—	500 WMAZ	
				Macon Junior Ch. of Com.		
Savannah	1410	—	212.6	—	1000 WSGP	
				Chamber of Commerce		
	1210	—	247.8	—	100 WSIX	
				638 Tire & Vulcan. Co.		
Tifton	1310	—	228.9	—	20 WRBI	
				Kent's Furn. & Music Store		
Toocoo	1450	—	206.8	—	250 WTFI	
				Toocoo Falls Inst.		

Location	Kilo.	Meters	Power	Owner	Station	Readings
HAWAII						
Honolulu	940	—	319.	—	500 KGU	
				M. A. Mulrony		

IDAHO

Boise	1250	—	239.9	—	1000 KIDO	
				Phillips & Hill		
Idaho Falls	1320	—	227.1	—	250 KID	
				Jack W. Duckworth, Jr.		
Jerome	1420	—	211.1	—	50 KFXD	
				Service Radio Co.		
Pocatello	900	—	333.1	—	250 KSEI	
				KSEI Br. Ass'n.		
Sandpoint	1420	—	211.1	—	15 KGKX	
				C. E. Twiss		
Twin Falls	1320	—	227.1	—	250 KGIQ	
				Idaho Radio Br. Corp.		

ILLINOIS

Carthage	1070	—	280.2	—	50 WCAZ	
				Carthage College		
Chicago	920	—	325.9	—	500 WAAF	
				Drovers Journ. Pub. Co.		
	770	—	389.4	—	25,000 WBBM	
				Adas Invest. Co.		
	970	—	309.1	—	1500 WCFL	
				Chicago Fed. of Lab.		
	1210	—	247.8	—	100 WCRW	
				Clinton R. White		
	1210	—	247.8	—	100 WEDC	
				Emil Denmark, Inc.		
	870	—	344.6	—	50,000 WENR	
				Gr. Lakes Rad. Bdcst. Co.		
	1360	—	220.4	—	500 WGES	
				Oak Leaves Br. Corp., Inc.		
	570	—	526.0	—	1500 WIBO	
				Nelson Bros. B. & M. Co.		
	1480	—	202.6	—	5000 WJAZ	
				Zenith Radio Corp.		
	1310	—	228.9	—	50 WKBI	
				Fred L. Schoenwolf		
	870	—	344.6	—	5000 WLS	
				Agricultural Br. Co.		
	670	—	447.5	—	5000 WMAQ	
				Chicago Daily News		
	1080	—	277.6	—	5000 WMBI	
				The Moody Bible Inst.		
	1480	—	202.6	—	5000 WORD	
				People's Pulpit Assn.		
	570	—	526.	—	500 WPCC	
				North Shore Cong. Ch.		
	1210	—	247.8	—	100 WSBC	
				World Battery Co.		
	1020	—	293.9	—	5000 KYW	
				Westinghouse E. & M. Co.		
	1020	—	293.9	—	500 KYWA	
				Westinghouse E. & M. Co.		
Cleero	1310	—	228.9	—	100 WHFC	
				Triangle Broadcasters		
Decatur	1200	—	249.9	—	100 WJBL	
				Wm. Gushard Dry Goods Co.		
Elgin	720	—	416.4	—	25,000 WGN	
				The Tribune Co.		
Evanston	1310	—	228.9	—	100 WEHS	
				V. C. Carlson		
Forest Park	1480	—	202.6	—	5000 WSOA	
				Radiophone Brdcastg. Corp.		
Galesburg	1310	—	228.9	—	100 WKBS	
				Pernall N. Nelson		
Harrisburg	1210	—	247.8	—	100 WEBQ	
				First Trust & Savings Bank		
Joliet	1310	—	228.9	—	100 WCLS	
				WCLS, Inc.		
	1310	—	228.9	—	100 WKBB	
				Sanders Bros.		
La Salle	1200	—	249.9	—	100 WJBC	
				Hummer Furn. Co.		
Mooseheart	1130	—	265.3	—	20,000 WJJD	
				Sup. Lodge of World, L.O.O.M.		
Peoria	1440	—	208.2	—	1000 WMBD	
				Peoria. Hts. R. Lab.		
Quincy	1440	—	208.2	—	500 WTAD	
				Ill. St. Med. Br. Cor.		
Rockford	1410	—	212.6	—	500 KFLV	
				A. T. Frykman		

U.S. Broadcasting Stations Continued

Location	Kilo.	Meters	Power	Owner	Station	Readings
Rock Island	1210	— 247.8	— 100	Beardsley Spec. Co.	WHBF	
Springfield	1210	— 247.8	— 100	H. L. Dewing & C. H. Messter	WCBS	
Streator	1210	— 247.8	— 50	Williams Hdw. Co.	WTAX	
Tuscola	1070	— 280.2	— 100	Jas. L. Bush	WDZ	
Urbana	890	— 336.9	— 500	University of Ill.	WILL	
Zion	1080	— 277.6	— 5000	Wilbur Glenn Voliva	WCBD	

INDIANA

Anderson	1210	— 247.8	— 100	Citizens Bank	WHBU	
Brookville	1500	— 199.9	— 100	Knox Bat. & Elec. Co.	WKBV	
Culver	1400	— 214.2	— 500	Culver Military Ac.	WCMA	
Evansville	630	— 475.9	— 500	Evansville on the Air	WGBF	
Fort Wayne	1370	— 218.8	— 100	Allen Wayne Co.	WGL	
	1160	— 258.5	— 10,000	Main Auto Sup. Co.	WOWO	
Gary	1360	— 220.4	— 500	J. Kennedy Ra. Corp.	WJKS	
Hammond	1200	— 249.9	— 100	Hammond-Calumet Br. Corp.	WWAE	
Indianapolis	1230	— 243.8	— 1000	Indianapolis P. & L. Co.	WFBM	
	1400	— 214.2	— 500	Indianapolis Br. Co.	WKBF	
La Porte	1200	— 249.9	— 10	The Radio Club, Inc.	WRAF	
Marion	1310	— 228.9	— 50	Marion Brdcstg. Co.	WJAK	
Muncie	1310	— 228.9	— 50	Donald A. Burton	WLBC	
South Bend	1230	— 243.8	— 500	South Bend Tribune	WSBT	
Terre Haute	1310	— 228.9	— 100	Banks of Wabash Br. Assn.	WBOW	
Valparaiso	1240	— 241.8	— 500	Immanuel Luther. Ch.	WRBC	

IOWA

Anes	560	— 535.4	— 5000	Iowa State College	WOI	
Boone	1310	— 228.9	— 100	Boone Biblical Col.	KFGQ	
Cedar Rapids	1310	— 228.9	— 100	H. F. Paar	KWCR	
Clarinda	1380	— 217.3	— 500	Berry Seed Co.	KSO	
Council Bluffs	1260	— 238.0	— 2500	Mona Motor Oil Co.	KOIL	
Davenport	1000	— 299.8	— 5000	Palmer School of Chiro.	WOC	
Decorah	1270	— 236.1	— 50	C. W. Greenley	KGCA	
	1270	— 236.1	— 100	Luther College	KWLC	
Des Moines	1000	— 299.8	— 5000	Bankers' Life Co.	WHO	
Fort Dodge	1310	— 228.9	— 100	C. S. Tunwall	KFJY	
Iowa City	580	— 516.9	— 500	State Univ. of Iowa	WSUI	
Marshalltown	1200	— 249.9	— 100	Marshall Elec. Co.	KFJB	
Muscotline	1170	— 256.3	— 5000	N. Baker	KTNT	
Ottumwa	1420	— 211.1	— 100	Poling Elec. Co.	WIAS	
Red Oak	1420	— 211.1	— 100	Red Oak Radio Corp.	KICK	
Shenandoah	890	— 336.9	— 1000	Henry Field Co.	KFNF	
	930	— 322.4	— 1000	May Seed & Nursery Co.	KMA	
Sloux City	1330	— 225.4	— 1000	The Journal	KSCJ	
Waterloo	1200	— 249.9	— 250	Waterloo Br. Co.	WMT	

Location	Kilo.	Meters	Power	Owner	Station	Readings
----------	-------	--------	-------	-------	---------	----------

KANSAS

Kansas City	1420	— 211.1	— 100	E. L. Dillard	WLBF	
Lawrence	1220	— 245.8	— 1000	Univ. of Kansas	KFKU	
	1220	— 245.8	— 1000	Jenny Wren Co.	WREN	
Manhattan	580	— 516.9	— 1000	Kan. State Agri. Col.	KSAC	
Millford	1050	— 285.5	— 5000	Dr. J. R. Brinkley	KFKB	
Topeka	1300	— 230.6	— 1000	Topeka Br. Assn., Inc.	WIBW	
Wichita	1300	— 230.6	— 1000	Radio Station KFH Co.	KFH	

KENTUCKY

Covington	1480	— 202.6	— 5000	L. B. Wilson, Inc.	WCKY	
Hopkinsville	940	— 319.	— 1000	The Acme Mills	WFIW	
Louisville	820	— 365.6	— 10,000	Courier & Louisville Times	WHAS	
	1200	— 249.9	— 30	Amer. Br. Corp. of Ky.	WLAP	

LOUISIANA

Kennerwood	850	— 352.7	— 10,000	W. K. Henderson	KWKH	
New Orleans	1200	— 249.9	— 100	Coliseum Pl. Bap. Ch.	WABZ	
	1250	— 239.9	— 1000	J. H. Uhalt	WDSU	
	1370	— 218.8	— 100	V. Jensen	WJBO	
	1200	— 249.9	— 30	C. Carlson, Jr.	WJBW	
	1320	— 227.1	— 500	Saenger Theatres	WSMB	
	850	— 352.7	— 5000	Loyola University	WWL	
Shreveport	1310	— 228.9	— 50	R. M. Dean	KRMD	
	1450	— 206.8	— 500	S. R. Elliott & A. C. Steere	KTBS	
	1310	— 228.9	— 100	Houseman Sheet Metal Wks.	KTSL	
	1210	— 247.8	— 100	W. E. Antony	KWEA	

MAINE

Bangor	1200	— 249.9	— 100	1st Universalist Ch.	WABI	
	620	— 483.6	— 500	Maine Brdcstg. Co.	WLWZ	
Portland	940	— 319.	— 500	Cong. Sq. Hotel Co.	WCSH	

MARYLAND

Baltimore	1060	— 282.8	— 10,000	Cons. Gas E. L. & P. Co.	WBAL	
	600	— 499.7	— 250	Monumental Radio Inc.	WCAO	
	1370	— 218.8	— 100	Baltimore Br. Corp.	WCBM	
	1270	— 236.1	— 250	Baltimore Radio Show, Inc.	WFBR	
Cumberland	1420	— 211.1	— 50	Cumberland Brdstg. Co.	WTBO	

MASSACHUSETTS

Auburn	1200	— 249.9	— 100	A. F. Kleindienst	WORC	
Babson Park	780	— 334.4	— 250	Babson's Stat. Org., Inc.	WBSO	
Boston	990	— 302.8	— 500	Westinghouse E. & M. Co.	WBZA	
	1500	— 199.9	— 250	Boston Brdcstg. Co.	WLOE	
	1500	— 199.9	— 50	Mass. Edu. Society	WMES	

U.S. Broadcasting Stations Continued

Location	Kllo.-Meters	Power	Owner	Station	Readings
Boston	1230	— 243.8	— 1000	WNAC	
	The Shepard Stores				
Tremont Temple Baptist Ch.	1420	— 211.1	— 250	WSSH	
	Doughty & Welch Elec. Co.				
Fall River	1450	— 206.8	— 250	WSAR	
Gloucester	1200	— 249.9	— 100	WEPS	
	Matheson Radio Co.				
Lexington	830	— 361.2	— 1000	WHDH	
	Matheson Radio Co., Inc.				
Lexington	1360	— 220.4	— 500	WLEX	
	Lexington Air Station				
New Bedford	1420	— 211.1	— 100	WLEY	
	Lexington Air Stations				
New Bedford	1310	— 228.9	— 100	WNBH	
	New Bedford Br. Co.				
Springfield	990	— 302.8	— 15,000	WBZ	
	Westinghouse E. & M. Co.				
S. Dartmouth	1360	— 220.4	— 500	WMAF	
Round Hills Radio Corp.					
Weymouth	590	— 508.2	— 1000	WEEI	
	Edison Elec. Illum. Co. of Bos.				
Worcester	580	— 516.9	— 250	WTAG	
	Worcester Tel. Pub. Co.				

MICHIGAN

Battle Creek	1420	— 211.1	— 50	WKBP	
	Enquirer News Co.				
Bay City	1410	— 212.6	— 500	WBCM	
	Jas. E. Davidson				
Berrien Spgs.	590	— 508.2	— 1000	WEMC	
Emanuel Miss. Col.					
Calumet	1370	— 218.8	— 250	WHDF	
	Upper Mich. Br. Co.				
Detroit	1240	— 241.8	— 750	WGHP	
	American Br. Corp.				
Detroit	750	— 399.8	— 5000	WJR	
	W. J. R., Inc.				
Detroit	1420	— 211.1	— 100	WMBC	
	Mich. Br. Co.				
Detroit	920	— 325.9	— 1000	WWJ	
	The Detroit News				
Flint	1310	— 228.9	— 100	WFDF	
	F. D. Fallam				
Grand Rapids	1270	— 236.1	— 500	WOOD	
	W. B. Stiles, Inc.				
Grand Rapids	1270	— 236.1	— 500	WASH	
	Wash. Br. Corp.				
Jackson	1370	— 218.8	— 100	WIBM	
	C. L. Carrell				
Lansing	1040	— 288.3	— 1000	WKAR	
	Mich. State College				
Lapeer	1500	— 199.9	— 100	WMPC	
	1st Meth. Epis. Ch.				
Ludington	1500	— 199.9	— 50	WKBZ	
	K. L. Ashbacker				
Royal Oak	1310	— 228.9	— 50	WAGM	
	R. L. Miller				
Ypsilanti	1370	— 218.8	— 50	WJBK	
	James F. Hopkins				

MINNESOTA

Collegeville	1370	— 218.8	— 100	WFBJ	
	St. John's Univ.				
Duluth	1280	— 234.2	— 1000	WEBC	
	Head of the Lakes Br. Co.				
Fergus Falls	1200	— 249.9	— 50	KGDE	
	Chas. L. Jaren				
Hancock	1200	— 249.9	— 50	KGFK	
	Lautzenheiser & Mitchell				
Minneapolis	810	— 370.2	— 7500	WCCO	
	Washburn Crosby Corn.				
Minneapolis	1180	— 254.1	— 1000	WDGY	
	Dr. G. W. Young				
Minneapolis	1180	— 254.1	— 1500	WHDI	
	W. H. Dunwoody Ind. Inst.				
Minneapolis	1250	— 239.9	— 500	WLB	
	Univ. of Minnesota				
Minneapolis	1250	— 239.9	— 1000	WRHM	
	Rosedale Hosp. Co., Inc.				
Northfield	1250	— 239.9	— 1000	KFMX	
	Carlton College				
Northfield	1250	— 239.9	— 1000	WCAL	
	St. Olaf College				
Westcott	1460	— 205.4	— 10,000	KSTP	
	Nat. Battery Br. Co.				

Location	Kllo.-Meters	Power	Owner	Station	Readings
MISSISSIPPI					
Columbus	880	— 340.7	— 500	WCOC	
	Crystal Oil Co.				
Greenville	1210	— 247.8	— 100	WRBQ	
	J. P. Scully				
Gulfport	1210	— 247.8	— 100	WGCM	
	Gulf Coast Music Co.				
Hattiesburg	1420	— 211.1	— 100	WRBJ	
	Woodruff Furn. Co.				
Utica	1360	— 220.4	— 300	WQBC	
	Utica Ch. of Com.				

MISSOURI

Cape Girardeau	1210	— 247.8	— 50	KFVS	
	Hirsch B. & R. Co.				
Clayton	550	— 545.1	— 500	KFUO	
	E. L. Synod of Mo., Ohio & other states				
Columbia	630	— 475.9	— 500	KFRU	
	Stephens College				
Independence	950	— 315.6	— 2500	KMBC	
	Midland Br. Co.				
Jefferson City	630	— 475.9	— 500	WOS	
	State Marketing Bu.				
Joplin	1420	— 211.1	— 250	WMBH	
	E. D. Aber				
Kansas City	1370	— 218.8	— 100	KWKC	
	W. Duncan Br. Co.				
Kansas City	610	— 491.5	— 1000	WDAF	
	K. C. Star Co.				
Kansas City	950	— 315.6	— 500	WHB	
	Sweeney Auto School				
Kansas City	610	— 491.5	— 1000	WOQ	
	Unity School of Christ.				
Kirksville	1200	— 249.9	— 15	KFKZ	
	N.E. Mo. State Teachers Col.				
St. Joseph	560	— 535.4	— 2500	KFEQ	
	Scroggin Bank				
St. Joseph	1370	— 218.8	— 100	KGBX	
	Foster-Hall Tire Co.				
St. Louis	1200	— 249.9	— 100	KFWF	
	St. Louis Truth Center				
St. Louis	1090	— 275.1	— 50,000	KMOX	
	Voice of St. Louis				
St. Louis	550	— 545.1	— 500	KSD	
	Pulitzer Pub. Co.				
St. Louis	1350	— 222.1	— 1000	KWK	
	Gr. St. Louis Br. Corp.				
St. Louis	760	— 394.5	— 1000	WEW	
	St. Louis University				
St. Louis	1200	— 249.9	— 250	WIL	
	Missouri Br. Co.				
St. Louis	1200	— 249.9	— 250	WMAY	
	Kingshighway Pres. Ch.				

MONTANA

Billings	950	— 315.6	— 500	KGHL	
	N. W. Auto Sup. Co.				
Butte	1360	— 222.1	— 250	KGIR	
	Symons Brdcatg. Co.				
Havre	1360	— 220.4	— 500	KFBB	
	F. A. Buttrey Co.				
Kallispell	1310	— 228.9	— 100	KGEZ	
	Chamber of Commerce				
Missoula	570	— 526	— 500	KUOM	
	State U. of Mont.				
Vida	1420	— 211.1	— 10	KG CX	
	1st State Bank of Vida				

NEBRASKA

Clay Center	740	— 405.2	— 1000	KMMJ	
	The M. M. Johnson Co.				
Lincoln	770	— 389.4	— 5000	KFAB	
	Neb. Buick Auto Co.				
Lincoln	1210	— 247.8	— 100	KFOR	
	H. A. Shuman				
Lincoln	590	— 508.2	— 500	WCAJ	
	Neb. Wesleyan Univ.				
Norfolk	1060	— 282.8	— 1000	WJAG	
	Norfolk Daily News				
Omaha	660	— 454.3	— 500	WAAW	
	Omaha Grain Exch.				
Omaha	590	— 508.2	— 1000	WOW	
	W. O. W. Life Ins. Assn.				

U.S. Broadcasting Stations Continued

Location	Kilo.-Meters	Power	Owner	Station	Readings
Ravenna	1310 — 228.9	— 50	O. F. Sothman	KGFW	
York	930 — 322.4	— 1000	G. R. Miller	KGBZ	

NEVADA

Las Vegas	1420 — 211.1	— 100	J. M. Heaton	KGIX	
Reno	1370 — 218.8	— 100	Jay Peters, Inc.	KOH	

NEW HAMPSHIRE

Laconia	1310 — 228.9	— 50	Laconia Radio Club	WKAV	
Tilton	1430 — 209.7	— 500	Booth Radio Labs.	WBRL	

NEW JERSEY

Asbury Park	1280 — 234.2	— 500	Radio Ind. Br. Co.	WCAP	
Atlantic City	1100 — 272.6	— 5000	Municipality of A. C.	WPG	
Camden	1280 — 234.2	— 500	City of Camden	WCAM	
Elizabeth	1450 — 206.8	— 250	N. J. Broad. Corp.	WIBS	
Port Lee	1450 — 206.8	— 250	WBMS Brdestg. Corp.	WBMS	
Jersey City	1070 — 280.2	— 300	Bremer Br. Corp.	WAAT	
	1450 — 206.8	— 250	Camith Corp.	WKBO	
Newark	1250 — 239.9	— 2000	W. A. A. M., Inc.	WAAM	
	1250 — 239.9	— 250	May Rad. Br. Corp.	WGCP	
	1450 — 206.8	— 250	Radio Investment Co.	WNJ	
	710 — 422.3	— 5000	L. Bamberger & Co.	WOR	
Paterson	1250 — 239.9	— 1000	R. E. O'Dea	WODA	
Red Bank	1210 — 247.8	— 100	R. S. Johnson	WJBI	
Trenton	1280 — 234.2	— 500	F. J. Wolff	WOAX	

NEW MEXICO

Albuquerque	1230 — 243.8	— 500	New Mexico Brdestg. Co.	KGGM	
Raton	1370 — 218.8	— 50	Hubbard & Murphy	KGFL	
State College	1180 — 254.1	— 20,000	Col. of Agri. & Mech. Arts	KOB	

NEW YORK

Amherst	550 — 545.1	— 1000	Radio Sta. WGR, Inc.	WGR	
Auburn	1370 — 218.8	— 100	Radio Service Labs	WMBO	
Bay Shore	1210 — 247.8	— 100	Radiotel Mfg. Co.	WINR	
Binghamton	1500 — 199.9	— 50	Hewitt-Wood Radio Co., Inc.	WNBF	
Brooklyn	1400 — 214.2	— 500	Brooklyn Br. Corp.	WBBC	
	1400 — 214.2	— 500	Voice of Brooklyn	WLTH	
	1500 — 199.9	— 100	P. J. Gollhofer	WMBQ	
	1400 — 214.2	— 500	Amateur Radio Spec. Co.	WSGH	
Buffalo	1310 — 228.9	— 100	H. H. Howell	WEBR	
	1470 — 204.	— 5000	Churchill Evan. Assn.	WKBW	
	1040 — 288.3	— 1000	Radio. Sta. WKEN	WKEN	

Location	Kilo.-Meters	Power	Owner	Station	Readings
	900 — 333.1	— 750	WMAK Br. System, Inc.	WMAK	
	1370 — 218.8	— 50	Seneca Vocation. Sch.	WSVS	
Canton	1220 — 245.6	— 500	S. Lawrence Univ.	WCAD	
Cazenovia	570 — 526.0	— 250	Olive B. Meredith	WMAC	
Coney Island	1400 — 214.2	— 500	U. S. Broad. Corp.	WCGU	
Freeport	1210 — 247.8	— 100	H. H. Carman	WGBB	
Ithaca	1210 — 247.8	— 50	Lutheran As. of Ith.	WLCI	
	1270 — 236.1	— 500	Cornell University	WEAI	
Jamaica	1420 — 211.1	— 10	P. J. Prinz	WMRJ	
Jamestown	1210 — 247.8	— 25	A. E. Newton	WOCL	
Long Beach	1500 — 199.9	— 100	A. Faske	WCLB	
Long Island City	1500 — 199.9	— 100	J. N. Brahy	WL BX	
New York	860 — 348.6	— 5000	Atlantic Broad. Corp.	WABC	
	1350 — 222.1	— 250	Baruchrome Corp.	WBNY	
	1350 — 222.1	— 250	Italian Edu. Br. Co.	WCDA	
	660 — 454.3	— 50,000	National Br. Corp.	WEAF	
	1300 — 230.6	— 500	Debs Mem. Radio Fund, Inc.	WEVD	
	1180 — 254.1	— 500	General Br., Inc.	WGBS	
	1300 — 230.6	— 1000	Defenders of Truth So.	WHAP	
	1010 — 296.9	— 250	Marcus Loew Booking Agency	WHN	
	760 — 394.5	— 30,000	Radio Corp. of Amer.	WJZ	
	1350 — 222.1	— 250	Standard Cahill Co.	WKBQ	
	1100 — 272.6	— 5000	Miss. Soc. of St. Paul the Apostle	WLWL	
	570 — 526.	— 500	Knickerbocker Br. Co.	WMCA	
	1350 — 222.1	— 250	Mad. Sq. Garden Br. Corp.	WMSG	
	570 — 526.	— 500	Dept. of P. & S.	WNYC	
	1130 — 265.3	— 1000	International Br. Corp.	WOV	
	810 — 370.2	— 500	Eastern Br., Inc.	WPCH	
	1010 — 296.9	— 250	Calvary Baptist Ch.	WQAO	
	1010 — 296.9	— 250	Aviation Radio Station	WRNY	
Patchogue	1420 — 211.1	— 100	Nassau Br. Corp.	WPOE	
Poughkeepsie	1440 — 208.2	— 500	Harold E. Smith	WOKO	
Rochester	1150 — 260.7	— 5000	Stromberg Carlson Mfg. Co.	WHAM	
	1440 — 208.2	— 500	Hickson Elec. Co.	WHEC	
Rossville	1300 — 230.6	— 1000	People's Pulpit As.	WBBR	
Saranac Lake	1290 — 232.4	— 50	Smith & Mace	WNBZ	
Schenectady	790 — 379.5	— 50,000	General Elec. Co.	WGY	
Syracuse	900 — 333.1	— 750	The Onandago Co.	WFBL	
	570 — 526.	— 250	O. E. Meredith	WSYR	
Troy	1300 — 230.6	— 500	Rensselaer Poly. Inst.	WHAZ	
Tupper Lake	1420 — 211.1	— 10	George Franklin Bissell	WHDL	
Utica	1200 — 249.9	— 300	WIBX, Inc.	WIBX	
Woodside	1500 — 199.9	— 100	W. H. Reuman	WWRL	
Yonkers	1210 — 247.8	— 100	Westchester Br. Corp.	WCOH	

U.S. Broadcasting Stations Continued

Location	Kilo.-Meters - Power - Owner - Station	Readings
NORTH CAROLINA		
Asheville	570 — 526. — 1000 Citizens Brdcastg. Co.	WWNC
Charlotte	1080 — 277.6 — 5000 Station WBT, Inc.	WBT
Gastonia	1210 — 247.8 — 100 A. J. Kirby Music Co.	WRBU
Greensboro	1440 — 208.2 — 500 W. M. Nelson	WNRC
Raleigh	630 — 440.9 — 10,000 Durham Life Ins. Co.	WPTF
Wilmington	1370 — 218.8 — 100 Wilmington Radio As.	WRBT

NORTH DAKOTA		
Bismarek	550 — 545.1 — 500 Hoskins-Meyer	KFYR
Devils Lake	1210 — 247.8 — 100 Radio Elec. Co.	KDLR
Fargo	1280 — 234.2 — 1000 WDAY, Inc.	WDAY
Grand Forks	1370 — 218.8 — 100 University of N. D.	KFJM
Mandan	1200 — 249.9 — 100 Mandan Radio Assn.	KGCU
Minot	1420 — 211.1 — 100 E. C. Reineke	KGKG

OHIO		
Akron	1320 — 227.1 — 1000 A. T. Simmons	WADC
	1450 — 206.8 — 500 W. F. Jones Br., Inc.	WFJC
Bellefontaine	1370 — 218.8 — 100 F. P. Moler	WHBD
Cambridge	1210 — 247.8 — 100 R. N. Waller	WEBE
Canton	1200 — 249.9 — 10 St. John's Cath. Ch.	WHBC
	550 — 545.1 — 500 Kodel Radio Corp.	WKRC
	700 — 428.3 — 50,000 Crosley Radio Corp.	WLW
	1330 — 225.4 — 500 Crosley Radio Corp. (lessee)	WSAI
Cleveland	1070 — 280.2 — 1000 WTAM & WEAR, Inc.	WEAR
	1390 — 215.7 — 1000 Radio Air Serv. Corp.	WHK
	620 — 483.6 — 500 Cleveland Radio Br. Corp.	WJAY
	1070 — 280.2 — 3500 WTAM & WEAR, Inc.	WTAM
Columbus	640 — 468.5 — 500 Amer. Ins. Union	WAIU
	1430 — 209.7 — 500 Com. Radio Serv. Co.	WCAH
	570 — 526.0 — 750 Ohio State University	WEAO
	1210 — 247.8 — 50 W. E. Heskitt	WMAN
Dayton	570 — 526. — 200 S. M. Krohn, Jr.	WSMK
Hamilton	1310 — 228.9 — 100 Doron & Slade	WRK
Mansfield	1210 — 247.8 — 100 Mansfield Br. Assn.	WJW
Stuebenville	1420 — 211.1 — 50 George W. Robinson	WIBR
Springfield	1450 — 206.8 — 500 Wittenberg College	WCSO
Toledo	1340 — 223.7 — 500 Toledo Br. Co.	WSPD
Youngstown	570 — 526. — 500 W. P. Williamson, Jr.	WKBN

OKLAHOMA		
Alva	1420 — 211.1 — 100 D. R. Wallace	KGFF
Chickasha	1400 — 214.2 — 500 Okla. Col. for Women	KOCW
Enid	1370 — 218.8 — 250 Champlin Refining Co.	KCRC
Norman	1010 — 296.9 — 500 University of Okla.	WNAD

Location	Kilo.-Meters - Power - Owner - Station	Readings
Okla. City	1470 — 204. — 5000 Nat. Radio Mfg. Co.	KFJF
	1310 — 228.9 — 50 Exch. Ave. Bap. Ch.	KFXR
	1370 — 218.8 — 100 Faith Tabernacle Assn.	KGFG
	900 — 333.1 — 1000 WKY Radiophone Co.	WKY
Picher	1010 — 296.9 — 500 D. L. Connell, M. D.	KGGF
Ponca City	1200 — 249.9 — 100 C. L. Carrell	WBBZ
Tulsa	1140 — 263.0 — 5000 S. W. Sales Corp.	KVOO

OREGON		
Astoria	1370 — 218.8 — 100 Geo. Kincaid	KFJI
Corvallis	560 — 535.4 — 1000 Ore. State Agri. Col.	KOAC
Eugene	1420 — 211.1 — 100 Eugene Br. Station	KORE
Marshfield	1370 — 218.8 — 50 H. H. Hanseth	KOOS
Medford	1310 — 228.9 — 50 W. J. Virgin	KMED
Portland	1180 — 254.1 — 5000 Western Br. Co.	KEX
	1420 — 211.1 — 100 Benson Poly. School	KFIF
	1300 — 230.6 — 500 A. C. Dixon & Son	KFJR
	620 — 483.6 — 1000 Oregonian Pub. Co.	KGW
	940 — 319. — 1000 KOIN, Inc.	KOIN
	1300 — 230.6 — 500 M. E. Brown	KTBR
	1500 — 199.9 — 15 Schaeffer Radio Co.	KWBS
	1060 — 282.8 — 500 W. Jerman	KWJJ
	1250 — 239.9 — 500 KXL Broadcasters	KXL

PENNSYLVANIA		
Allentown	1440 — 208.2 — 250 B. B. Musselmann	WCBA
	1440 — 208.2 — 250 Allentn. Call Pub. Co.	WSAN
Altoona	1310 — 228.9 — 100 W. F. Gable Co.	WFBG
Carbondale	1200 — 249.9 — 10 Home Cut Glass & China Co.	WNBW
Elkins Park	930 — 322.4 — 50 St. Paul's P. E. Ch.	WIBG
Erie	1420 — 211.1 — 30 Erie Dispatch Herald	WEDH
	1370 — 218.8 — 50 C. R. Cummins	WRAK
Grove City	1310 — 228.9 — 100 Grove City College	WSAJ
Harrisburg	1430 — 209.7 — 500 Penna. State Police	WBAK
	1200 — 249.9 — 100 N. R. Hoffman	WCOD
	1430 — 209.7 — 500 Pennsylvania Br. Co.	WHP
Johnstown	1310 — 228.9 — 100 Johnstown Auto Co.	WJAC
Lancaster	1310 — 228.9 — 15 Lancaster Elec. Sup. Co.	WGAL
	1200 — 249.9 — 100 Kirk Johnson & Co.	WKJC
Lewisburg	1210 — 247.8 — 100 Bucknell University	WJBU
Oil City	1260 — 238. — 500 Petroleum Tel. Co.	WLBW
Philadelphia	1170 — 256.3 — 10,000 Universal Br. Co.	WCAU
	1370 — 218.8 — 100 Howard R. Miller	WELK
	610 — 491.5 — 500 Keystone Br. Corp.	WFAN
	560 — 535.4 — 500 Strawbridge & Clothier	WFI

U.S. Broadcasting Stations Continued

Location	Kilo.	Meters	Power	Owner	Station	Readings
Philadelphia	1310	—	228.9	—	50 Foulkrod Radio Eng. Co.	WFKD
	610	—	491.5	—	500 Gimbel Bros.	WIP
	560	—	535.4	—	500 Lit Bros.	WLIT
	1310	—	228.9	—	100 Lennig Bros.	WNAT
	1500	—	199.9	—	250 Wm. Penn. Br. Co.	WPEN
Pittsburgh	1020	—	293.9	—	250 Berachah Church	WRAX
	980	—	305.9	—	50,000 Westinghouse E. & M. Co.	KDKA
	1380	—	217.3	—	500 Doubleday, Hill Elec. Co.	KQV
	1220	—	245.8	—	500 Kaufman & Baer	WCAE
	1290	—	232.4	—	1000 Pitts. Rad. Sup. House	WJAS
Reading	1500	—	199.9	—	100 Rev. John W. Sproul	WMBJ
	1310	—	228.9	—	100 Ave. Radio & Elec. Shop	WRAW
Scranton	880	—	340.7	—	250 Scranton Broadcasters	WGBI
	880	—	340.7	—	250 Scranton Times	WQAN
State College	1230	—	243.8	—	500 Penn State College	WPSC
Washington	1200	—	249.9	—	100 J. B. Spriggs	WNBO
Wilkes-Barre	1210	—	247.8	—	100 J. H. Stenger, Jr.	WBAX
	1310	—	228.9	—	100 L. G. Baltimore	WBRE

PORTO RICO

San Juan	890	—	336.9	—	500 Radio Corp. of P. R.	WKAQ
----------	-----	---	-------	---	-----------------------------	-------------

RHODE ISLAND

Newport	1500	—	199.9	—	100 LeRoy J. Beebe	WMBA
Pawtucket	1210	—	247.8	—	100 Shartenberg & Co.	WPAW
Providence	1210	—	247.8	—	100 D. W. Flint & Lincoln Stu.	WDWF
	550	—	545.1	—	500 The Shepard Co.	WEAN
	890	—	336.9	—	400 The Outlet Co.	WJAR

SOUTH CAROLINA

Charleston	1200	—	249.9	—	75 Wash. Light Infantry	WBBY
------------	------	---	-------	---	----------------------------	-------------

SOUTH DAKOTA

Brookings	550	—	545.1	—	1000 S. D. State College	KFDY
Deft Rapids	1370	—	213.8	—	50 J. R. Nelson	KGDA
Oldham	1200	—	249.9	—	15 J. A. Loesch	KG DY
Pierre	580	—	516.9	—	200 D. McNeill	KGFX
Rapid City	1200	—	249.9	—	100 S. D. St. School of Mines	WCAT
Sioux Falls	1110	—	270.1	—	2000 S. F. Broadcast As.	KSOO
Vermillion	890	—	336.9	—	750 University of S. D.	KUSD
Watertown	1210	—	247.8	—	100 Cutler's Rad. Br. Ser. Co.	KGCR
Yankton	570	—	526.0	—	1000 Guernsey Seed & Nursery Co.	WNAX

Location	Kilo.	Meters	Power	Owner	Station	Readings
----------	-------	--------	-------	-------	---------	----------

TENNESSEE

Bristol	1500	—	199.9	—	100 Radiophone Service Co.	WOPI
Chattanooga	1280	—	234.2	—	2500 Chattanooga Radio Co.	WDOD
Knoxville	1200	—	249.9	—	50 First Baptist Ch.	WFBC
	1310	—	228.9	—	50 Lonsdale Baptist Ch.	WNBK
	560	—	535.4	—	2000 Sterchi Bros.	WNOX
Lawrenceburg	600	—	499.7	—	500 Vaughan S. of Music	WOAN
Memphis	1430	—	209.7	—	500 First Baptist Ch.	WGBC
	1370	—	218.8	—	100 Br. Sta. WFBQ, Inc.	WHBQ
	570	—	526.0	—	1000 Mem. Commercial Appeal	WMC
	1430	—	209.7	—	500 J. Ulrich	WNBR
Nashville	600	—	499.7	—	1000 WREC, Inc.	WREC
	1490	—	201.2	—	5000 Life & Casualty Ins. Co.	WLAC
Union City	650	—	461.3	—	5000 Nat. Life & Ac. Ins. Co.	WSM
	1490	—	201.2	—	5000 Tenn. Pub. Co.	WTNT
	1310	—	228.9	—	250 Tittsworth's Radio Shop	WOBT

TEXAS

Abilene	1420	—	211.1	—	250 T. E. Kirksey	KFYO
Amarillo	1410	—	212.6	—	1000 Gish Radio Service	KGRS
	1410	—	212.6	—	250 Nat'l. Radio & Brdstg.	WDAG
Austin	1120	—	267.7	—	500 KUT Broadcasting Co.	KUT
Beaumont	560	—	535.4	—	1000 Magnolia Pet. Co.	KFDM
Brownsville	1260	—	238.0	—	500 Cham. of Commerce	KWWG
Brownwood	1500	—	199.9	—	100 Eagle Pub. Co.	KGKB
College Sta.	1120	—	267.7	—	500 Agri. & Mech. Col.	WTAW
Corpus Christi	1500	—	199.9	—	100 Eagle Brdstg. Co., Inc.	KGFI
Dallas	1040	—	288.3	—	10,000 KRLD, Inc.	KRLD
	800	—	374.8	—	50,000 The Dallas News & Dallas Jour.	WFAA
	1280	—	234.2	—	500 City of Dallas	WRR
Dublin	1310	—	228.9	—	15 C. C. Baxter	KFPL
El Paso	1310	—	228.9	—	100 Trinity Meth. Church	WDAH
	1310	—	228.9	—	100 Bledsoe & Blackwell	KTSM
Fort Worth	1370	—	218.8	—	100 H. C. Allison	KFJZ
	1240	—	241.8	—	1000 Texas Air Trspt. Br. Co.	KTAT
	800	—	374.8	—	50,000 Carler Pub., Inc.	WBAP
Galveston	1370	—	218.8	—	100 G. R. Clough	KFLX
	1290	—	232.4	—	1000 W. H. Ford	KFUL
Greenville	1310	—	228.9	—	15 The New Furniture Co.	KFPM
Harlingen	1260	—	238.0	—	500 Valley Radio-Elec. Corp.	KRGV
Houston	920	—	325.9	—	1000 Houston Ptg. Co.	KPRC
	1420	—	211.1	—	100 Uhalt Electric	KTUE
Richmond	1500	—	199.9	—	50 F. Bend Co. Sch. Bd.	KGHX
San Angelo	1370	—	218.8	—	100 KGKL, Incorporated	KGKL

U.S. Broadcasting Stations Continued

Location	Kilo.-Meters	Power	Owner	Station	Readings
San Antonio	1370 — 218.8 — 100		Liberto Radio Sales	KGCI	
San Antonio	1500 — 199.9 — 100		KGDR Broadcasting Co.	KGDR	
	1370 — 218.8 — 100		E. J. Roth	KGRC	
	1420 — 211.1 — 100		Alamo Br. Company	KTAP	
	1290 — 232.4 — 2000		Lone Star Br. Co., Inc.	KTSA	
	1190 — 252. — 5000		Southern Equip. Co.	WOAI	
Waco	1240 — 241.8 — 1000		F. P. Jackson	WJAD	
Wichita Falls	570 — 526.0 — 500		Wichita Falls Br. Co.	KGKO	

UTAH

Ogden	1370 — 218.8 — 200		Perry Bldg. Co.	KLO	
Salt Lake City	1290 — 232.4 — 1000		Intermountain Br. Corp.	KDYL	
	1130 — 265.3 — 5000		Radio Service Corp.	KSL	

VIRGINIA

Mt. Vernon Hills	1460 — 205.4 — 10,000		Independent Pub. Co.	WJSV	
Newport News	1310 — 228.9 — 100		Virginia Br. Co.	WGH	
Norfolk	780 — 384.4 — 500		WTAR Radio Corp.	WTAR	
Petersburg	1200 — 249.9 — 250		R. A. Gamble	WLBG	
Richmond	1370 — 218.8 — 100		Grace Cove. Pres. Ch.	WBBL	
	1210 — 247.8 — 100		Havens & Martin	WMBG	
	1110 — 270.1 — 1000		Larus & Bro. Co.	WRVA	
	1210 — 247.8 — 15		Reynolds & McGuire	WTAZ	
Roanoke	930 — 322.4 — 500		Richardson Wayland Elec. Co.	WDBJ	

VERMONT

Springfield	1200 — 249.9 — 10		First Cong. Ch.	WNBX	
-------------	-------------------	--	-----------------	-------------	--

WASHINGTON

Aberdeen	1420 — 211.1 — 75		KXRO, Inc.	KXRO	
Bellingham	1200 — 249.9 — 100		KVOS, Inc.	KVOS	
Everett	1370 — 218.8 — 50		Leese Bros.	KFBL	
Lacey	1200 — 249.9 — 50		St. Martin's College	KGY	
Longview	1600 — 199.9 — 10		Columbia Br. Co., Inc.	KUJ	
Oullma	1390 — 215.7 — 500		State Col. of Wash.	KWSC	
Seattle	1270 — 236.1 — 1000		Seattle Br. Co., Inc.	KOL	
	1420 — 211.1 — 100		KFQW, Inc.	KFQW	
	970 — 309.01 — 5000		N. W. Radio Ser. Co.	KJR	
	920 — 325.9 — 1000		Fisher's Blend Sta.	KOMO	
	1210 — 247.8 — 50		Pac. Coast Biscuit Co.	KPCB	

Location	Kilo.-Meters	Power	Owner	Station	Readings
Seattle	1210 — 247.8 — 100		Taft & Wasmer	KPQ	
	1120 — 267.7 — 50		Radio Sales Corp.	KRSC	
	1270 — 236.1 — 1000		First Pres. Church	KTW	
	1370 — 218.8 — 100		A. C. Dailey	KVL	
	570 — 526. — 500		Amer. Radio Tel. Co.	KXA	
Spokane	1230 — 243.8 — 100		No. Central High School	KFIO	
	1390 — 215.7 — 500		Symons Invest. Co.	KFPY	
	1470 — 204. — 5000		N. W. Radio Serv. Co.	KGA	
	590 — 508.2 — 2000		L. Wasmer, Inc.	KHQ	
Tacoma	1340 — 223.7 — 500		KMO, Inc.	KMO	
	760 — 394.5 — 1000		Puget Sound Radio Br. Co.	KVI	
Yakima	1370 — 218.8 — 50		Carl E. Haymond	KIT	

WEST VIRGINIA

Bluefield	1420 — 211.1 — 100		Daily Telegraph Print. Co.	WHIS	
Charlestown	580 — 516.9 — 250		Charlestown Radio Br. Co.	WOBU	
Fairmont	890 — 336.9 — 500		Holt, Rome Nov. Co.	WMMN	
Huntington	580 — 516.9 — 250		WSAZ, Inc.	WSAZ	
Welrton	1420 — 211.1 — 60		J. H. Thompson	WQBZ	
Wheeling	1160 — 258.5 — 250		W. Va. Br. Corp.	WWVA	

WISCONSIN

Beloit	600 — 499.7 — 350		Beloit College	WEBW	
Eau Claire	1330 — 225.4 — 1000		Gillette Rubber Co.	WTAQ	
Fond du Lac	1420 — 211.1 — 100		Commonwealth Reporter	KFIZ	
Kenosha	1200 — 249.9 — 100		C. E. Whitmore	WCLO	
La Crosse	1380 — 217.3 — 1000		Callaway Music Co.	WKBH	
Madison	940 — 319.0 — 750		University of Wis.	WHA	
	1210 — 247.8 — 100		Capital Times—Grand Thea.	WIBA	
Manitowoc	1210 — 247.8 — 100		Francis M. Kadow	WOMT	
Milwaukee	1120 — 267.7 — 250		Marquette University	WHAD	
	1120 — 267.7 — 250		Evening Wis. Co.	WISN	
	620 — 483.6 — 2500		Milwaukee Journal	WTMJ	
Poynette	1310 — 228.9 — 100		Wm. C. Forrest	WIBU	
Racine	1370 — 218.8 — 100		Racine Br. Corp.	WRJN	
Sheboygan	1410 — 212.6 — 500		Press Pub. Co. & Carrell	WHBL	
Stevens Pt.	900 — 333.1 — 3000		Wis. Dep. of Markets	WLBL	
Superior	1280 — 234.2 — 1000		Hd. of the Lakes Br. Corp.	WEBC	
West De Pere	1200 — 249.9 — 100		St. Norbert's Col.	WHBY	

WYOMING

Laramie	600 — 499.7 — 500		Bishop N. S. Thomas	KWYO	
---------	-------------------	--	---------------------	-------------	--

CANADA BROADCASTING STATIONS

Listed According to Provinces and Cities

Location	Kilo.-Meters	Power	Owner	Station	Readings
ALBERTA					
Calgary	690	— 434.5	— 500	The Calgary Herald	CFAC
	690	— 434.5	— 500	Western Br. Co.	CFCN
	690	— 434.5	— 500	The Albertan Pub. Co., Ltd.	CHGA
	690	— 434.5	— 250	The Albertan Pub. Co., Ltd.	CJCJ
	690	— 434.5	— 500	Canadian Nat'l. Railways	CNRC
Edmonton	580	— 516.9	— 250	Christ. & Mis. Alliance	CHMA
	580	— 516.9	— 500	The Edmonton Journal, Ltd.	CJCA
	580	— 516.9	— 500	University of Alberta	CKUA
	580	— 516.9	— 500	Canadian Nat'l. Railways	CNRE
Lethbridge	1120	— 267.7	— 50	Harold R. Carson	CJOC
Red Deer	840	— 356.9	— 1000	Messrs. Tull & Arden	CHCT
	840	— 356.9	— 1000	Ala. Pac. Grain Co., Ltd.	CKLC

BRITISH COLUMBIA					
Chilliwack	1210	— 247.8	— 5	Chill. Brcdstg. Co., Ltd.	CHWK
Kamloops	1120	— 267.7	— 15	Dulgeish & Weller	CFJC
Sea Island	1030	— 291.1	— 50	G. C. Chandler	CJOR
Vancouver	730	— 410.7	— 50	W. G. Hassell	CHLS
	730	— 410.7	— 50	Vancouver Daily Province	CKCD
	730	— 410.7	— 50	United Church of Canada	CKFC
	730	— 410.7	— 50	Sprott-Shaw Radio	CKMO
	730	— 410.7	— 100	A. Holstead & Wm. Hanlon	CKWX
	1030	— 291.1	— 500	Canadian Nat'l. Railways	CNRV
Victoria	630	— 475.9	— 500	Victoria Bcstg. As.	CFCT

MANITOBA					
Brandon	540	— 555.6	— 500	Manitoba Tele. Sys.	CKX
Winnipeg	780	— 384.4	— 5000	Manitoba Tele. Sys.	CKY
	780	— 384.4	— 5000	Canadian Nat'l. Railways	CNRW

NEW BRUNSWICK					
Fredericton	1210	— 247.8	— 50	James. S. Neill & Sons, Ltd.	CFNB
Moncton	630	— 475.9	— 500	Canadian Nat'l. Railways	CNRA
St. John	890	— 336.9	— 50	Imperial Theatre	CFBO

NOVA SCOTIA					
Halifax	930	— 322.4	— 500	Hal. Herald, Ltd.	CHNS
Sydney	880	— 340.7	— 50	N. Nathanson	CJCB
Wolfville	930	— 322.4	— 50	Acadia University	CKIC

ONTARIO					
Bowmanville	960	— 312.3	— 5000	Gooderham & Worts	CKGW
Brantford	1010	— 296.9	— 50	John Patterson	CKCR
Chatham	1210	— 247.8	— 50	W. Ont. "Better Radio Club"	CFCO
Cobalt	1210	— 247.8	— 15	R. L. MacAdam	CKMC
Hamilton	880	— 340.7	— 10	The Hamilton Spectator	CHCS
	880	— 340.7	— 50	Maple Leaf Radio Co., Ltd.	CHML

Location	Kilo.-Meters	Power	Owner	Station	Readings
Hamilton	880	— 340.7	— 50	Wentworth R. & A. Sup. Co.	CKOC
Iroquois Falls	600	— 499.7	— 500	Abitibi Power & Paper Co.	CFCH
Kingston	1120	— 267.7	— 500	Queen's University	CFRC
King, York Co.	960	— 312.3	— 4000	Stand. Radio Mfg. Corp.	CFRB
London	910	— 329.5	— 500	London Free Press Ptg. Co.	CJGC
	910	— 329.5	— 500	Canadian Nat'l. Railways	CNRL
Midland	1120	— 267.7	— 50	Midland Br. Corp.	CKPR
	690	— 434.5	— 100	Dr. G. M. Geldert	CKCO
	690	— 434.5	— 500	Canadian Nat'l. Railways	CNRO
Prescott	1010	— 296.9	— 50	Radio Ass. of Prescott	CFLC
Preston	1210	— 247.8	— 50	Wallace Russ	CKPC
Toronto	840	— 356.9	— 500	Star Pub. & Ptg. Co.	CFCA
	960	— 312.3	— 5000	Jarvis St. Bap. Ch.	CJBC
	580	— 516.9	— 500	The Evening Teleg.	CJSC
	580	— 516.9	— 500	The Dominion Bat. Co., Ltd.	CKCL
	580	— 516.9	— 500	Can. Nat. Carbon Co.	CKNC
	840	— 356.9	— 500	Nestle's Food Co. of Canada	CKOW
	840	— 356.9	— 500	Canadian Nat'l. Railways	CNRT

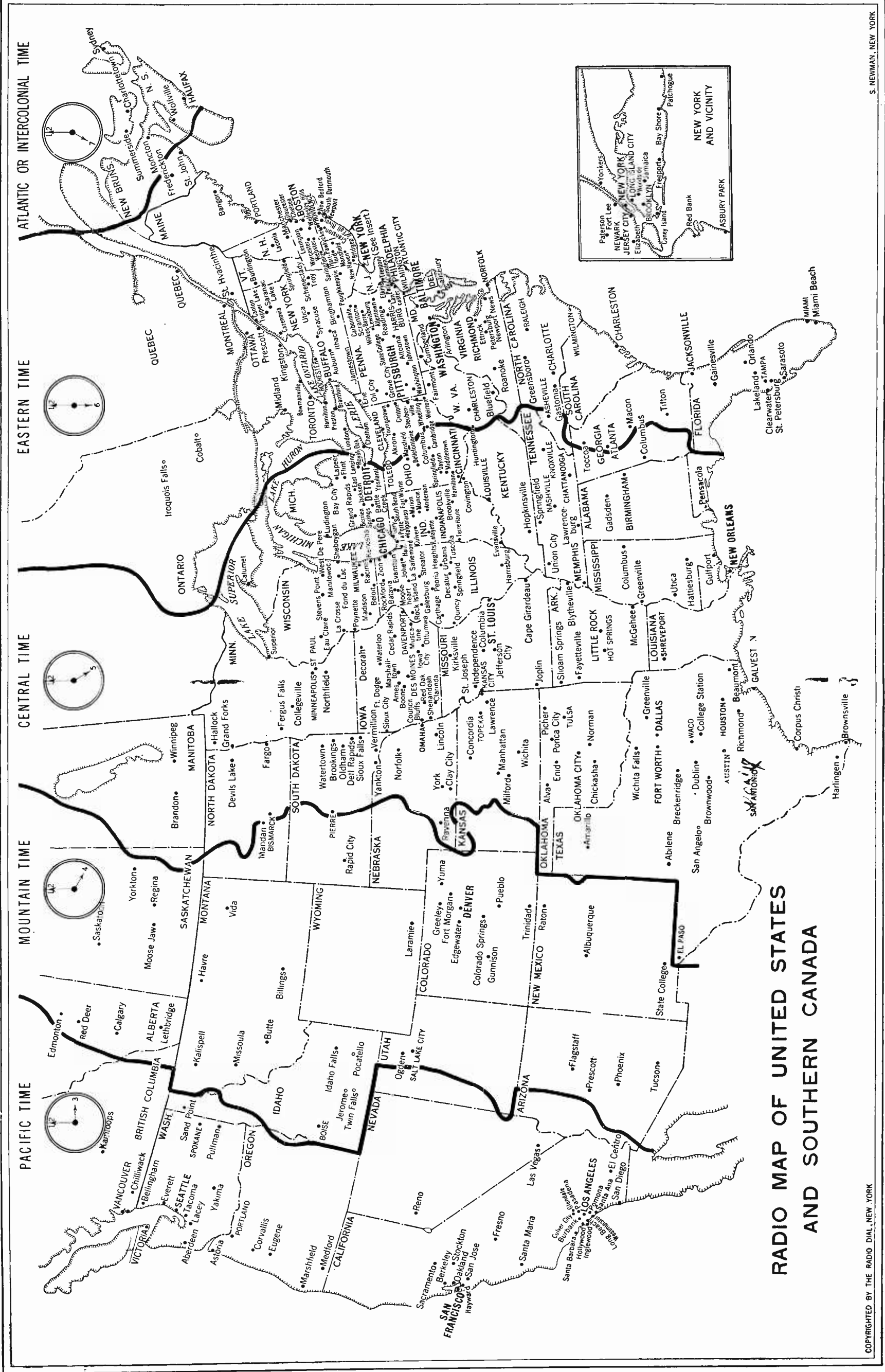
PRINCE EDWARD ISLAND					
Charlottetown	960	— 312.3	— 250	The Island Radio Co.	CFCY
	960	— 312.3	— 30	W. E. Burke	CHCK
Summerside	1120	— 267.7	— 25	R. T. Holman, Ltd.	CHGS

QUEBEC					
Montreal	1030	— 291.1	— 1650	Canadian Marconi Co.	CFCF
	730	— 410.7	— 500	North. Elec. Co., Ltd.	CHYC
	730	— 410.7	— 5000	La Presse Pub. Co., Ltd.	CKAC
	730	— 410.7	— 5000	Canadian Nat'l. Railways	CNRM
Quebec	880	— 340.7	— 25	E. Fontaine	CHRC
	880	— 340.7	— 22.5	Le "Soleil," Ltd.	CKCI
	880	— 340.7	— 50	G. A. Vandry	CKCV
	880	— 340.7	— 50	Canadian Nat'l. Railways	CNRO
St. Hyacinthe	1010	— 296.9	— 50	City of St. Hyacinthe, P. Q.	CKSH

SASKATCHEWAN					
Fleming	600	— 499.7	— 500	Jas. Richardson & Sons	CJRW
Moose Jaw	600	— 499.7	— 500	Jas. Richardson & Sons	CJRM
	960	— 312.3	— 500	R. H. Williams & Sons	CHWG
Regina	960	— 312.3	— 500	Sask. Co-op. Wheat Pro.	CJBR
	960	— 312.3	— 500	Leader Pub. Co.	CKCK
	960	— 312.3	— 500	Canadian Nat'l. Railways	CNRR
Saskatoon	910	— 329.5	— 500	The Elec. Shop, Ltd.	CFOC
	910	— 329.5	— 250	Radio Service, Ltd.	CJHS
	910	— 329.5	— 500	Canadian Nat'l. Railways	CNRS
Yorkton	630	— 475.9	— 500	The Winnipeg Grain Ex.	CJGX



ELSA GRAY, Prima Donna
Leading lady of "Story in a Song"—well known songs in dramatized form
A presentation of the Columbia Broadcasting System



**RADIO MAP OF UNITED STATES
AND SOUTHERN CANADA**

COPYRIGHTED BY THE RADIO DIAL, NEW YORK

S. NEWMAN, NEW YORK

WHAT'S ON THE AIR TONIGHT

Short Wave Broadcasting Stations of the World

RECORD YOUR DIAL NUMBERS OPPOSITE THE PROGRAM IN THE SPACE PROVIDED SO YOU MAY KNOW WHERE TO TUNE IN TO HEAR IT AGAIN

Mark your choice in the order of preference 1, 2, 3.

First line: N.B.C. Key Station WEAF.
Second line: N.B.C. Key Station WJZ.
Third line: C.B.S. Key Station WABC.

STANDARD TIME	STANDARD TIME			Dial	SUNDAY	Dial	MONDAY	Dial	TUESDAY
	Pacific	M't'n	Central						
3	4	5	6		Dr. Harry Emerson Fosdick Fox Fur Trappers Old Company's Songbook		Black and Gold Orchestra Normon Tab. Choir and Organ Voeng's Orchestra		Black and Gold Orchestra Old Man Sunshine Show Folks
3.30	4.30	5.30	6.30		Whitall Anglo-Persians L. T. Sealers' Orchestra		Black and Gold Orchestra Il. V. Kallenborn, Cur. Events		Black and Gold Orchestra Dinner Symphony
4	5	6	7		Heroes of the World—Sketch In the Spotlight Our Romantic Ancestors		Tuck and Wing—Sketch Moment Musicale Bernhard Levitow and his Commodore Ensemble		Roads of the Sky Jeddo Highlanders Carborundum Hour
4.30	5.30	6.30	7.30		Capitol Th. Family, Maj. Bowes At the Baldwin French Trio		Roxy and His Gang Bernhard Levitow and his Commodore Ensemble		Socoyland Sketches Lew White Organ Recital Carborundum Hour
5	6	7	8		Chase and Sanborn Choral Orch. Collier's Hour Sonatron Program		A. & P. Gypsies White House Concert Ce-Co. Courtiers, Henry Buhig, Humorist		Prophylactic Program Around the World with Libby True Romances
5.30	6.30	7.30	8.30		Our Gov't—David Lawrence Collier's Hour Majestic Theatre of the Air Wendell Hall		Edison Program Physical Culture Mag. Hour General Motors Family Party		Eveready Hour Folnson & Johnson Program Old Gold—P. Whiteman Hour
6	7	8	9		Atwater Kent Radio Hour D'Orsay's Parisienne Romance Majestic Theatre of the Air— Wendell Hall		General Motors Family Party Cabin Nights Burns Panatela Country Club		Eveready Hour Dutch Masters Minstrels Old Gold—P. Whiteman Hour
6.30	7.30	8.30	9.30		Atwater Kent Radio Hour Arabesque—A Modern Thon sand and One Nights Studebaker Champions Orca.		General Motors Family Party Cabin Nights Burns Panatela Country Club		Eveready Hour Dutch Masters Minstrels Old Gold—P. Whiteman Hour
7	8	9	10		Atwater Kent Radio Hour Arabesque—A Modern Thon sand and One Nights Studebaker Champions Orca.		General Motors Family Party Cabin Nights Burns Panatela Country Club		Eveready Hour Dutch Masters Minstrels Old Gold—P. Whiteman Hour
7.30	8.30	9.30	10.30		Royal's Poet of the Organ Sketch—Sunday at Seth Parker's Amos 'n' Andy, Comedians "Back Home" Hour		Chicago Civic Opera Voice of Columbia Empire Builders Earl Orchestralians		Night Club Romance Radio-Keith-Orpheum Hour Radio-Keith-Orpheum Hour
8	9	10	11		Russian Cathedral Choir South Sea Islanders "Back Home" Hour		Chicago Civic Opera Voice of Columbia Empire Builders Earl Orchestralians		Night Club Romance Radio-Keith-Orpheum Hour Radio-Keith-Orpheum Hour
8.30	9.30	10.30	11.30		Chicago Civic Opera Voice of Columbia Empire Builders Earl Orchestralians		Chicago Civic Opera Voice of Columbia Empire Builders Earl Orchestralians		Night Club Romance Radio-Keith-Orpheum Hour Radio-Keith-Orpheum Hour

UNITED STATES

Station	Location	Meters	Readings
WAAM (2XBA)	Newark, N. J.	65.18
WABC (2XE)	Richmond Hill, N. Y.	58.50
WABJ	Rocky Point, N. Y.	22.48
WBRL (1XY)	Tillon, N. H.	109.00
WEZ	Springfield, Mass.	37.24
WCFM	Chicago, Ill.	51.60
WCGU (2XBH)	Brooklyn, N. Y.	63.70
WCSH (1XAB)	Portland, Me.	32.00
WCX	Portland, Me.	32.00
WEAJ	Fondac, Mich.	22.48
WEA (8XJ)	Fondac, Mich.	22.48
WEG (2XAD)	Columbus, O.	54.02
WEG (2XAB)	Schenectady, N. Y.	21.96
WHR (8XB)	Schenectady, N. Y.	31.40
WJZ-WCX (8XAO)	Cleveland, O.	43.45
WJR-WCX (8XAO)	New Brunswick, N. J.	32.00
WJZ (3XL)	Pontiac, Mich.	59.96
WLV (8XAL)	New York, N. Y.	52.02
WVAL (9XAB)	Cincinnati, O.	105.00
WNEB	Omaha, Neb.	35.50
WND	Ocean Township, N. J.	46.48
WOR (2XAG)	Kearny, N. J.	65.40
WOWO	Fort Wayne, Ind.	22.80
WRNY (2XAL)	New York, N. Y.	30.91
WSM (4XD)	Nashville, Tenn.	31.43
WTFP	Mt. Vernon, Va.	56.00
KDKA (8XK)	East Pittsburgh, Pa.	42.75
(8XS, 8XP, P-Portable)	East Pittsburgh, Pa.	42.75
KEJK (6XAN)	Los Angeles, Cal.	105.90
KFPY (7XAB)	Spokane, Wash.	105.90
KFPQ (6XAB)	Holy City, Cal.	31.00
KFQZ (6XAL)	Hollywood, Cal.	108.20
KEVD (6XBX)	Fuller City, Cal.	103.00
KEWB (6XBR, auto)	Los Angeles, Cal.	105.00
KPWO (6XAD)	Avalon, Cal.	53.07
KGB	San Diego, Cal.	65.18
KGDE (6XBV)	Barrett, Minn.	40.00
KGGR (6XAX)	Long Beach, Cal.	48.86
KGGO (6XAX, 6XN)	San Francisco, Cal.	10 to 10
KHJ (6XAU)	Los Angeles, Cal.	104.10
KJBS (6XAR)	San Francisco, Cal.	62.00
KJLR (7XC, 7XO)	Seattle, Wash.	165.20
KMOX	St. Louis, Mo.	49.00
KMTR	Los Angeles, Cal.	108.20
KNRC (6XAF)	Santa Monica, Cal.	107.10
KNX (6XAL)	Los Angeles, Cal.	107.10
KOIL (9XU)	Cornell Bluffs, Ia.	61.06
KWE-KERP	Bolinas, Cal.	14.10
KWJ (7XAO)	Portland, Oregon	53.54

AFRICA

AIN	Casablanca, Morocco	51.00
SKR	Constantine, Tunisia	43.8
JB	Johannesburg, U. S. Africa	33.00
TLO	Nairobi, Kenya	33.00
TVA	Tunis, Tunisia	43.00

AUSTRALIA

2BL	Sydney	32.50
2PC	Sydney	32.50
2MB	Sydney	23.50
2AK	Melbourne	85.00
3AK	Melbourne	85.00
3LO	Melbourne	32.00
6AG	Perth, West Australia	32.00

AUSTRIA

OHK2	Vienna	70.00
EATH	Vienna	34.00
	Vienna	22.20

BELGIUM

EB4A2	Brussels	42.00
-------	----------	-------	-------

BRAZIL

SQBE	Bahia	24.00
	Para	34.00

CANADA

CF	Drummondville, Quebec	32.00
CJRX	Whitby, Man.	25.6

DENMARK

DNK	Copenhagen	32.05
DTRL	Copenhagen	42.12 and 84.25

ENGLAND

55W	Davenport	24.00
2NM	Caterham	32.50
GBS	Rugby	24.40

FRANCE

2BD	Agen	30.75
PL	Eiffel Tower, Paris	32.00
YN	Lyons—"Radio Lyon"	40.20
YR	Nancy	15.50
F8A	Nogent sur Seine	80.00
Radio	Paris—"Radio IL"	37.00
F8GC	Paris—"Radio IL"	61.00
FW	Ste. Assise	24.50

GERMANY

AFI	Konigswusterhausen	14.00
AFK	Hertlin (Dobertitz)	37.65
AFU	Hamburg	67.65
AFU	Konigswusterhausen	14.00
AGG	Nauen	11.00
AGG	Berlin	17.20
AGK	Nauen	56.70
LAP	Nauen	11.00
POF	Nauen	43.90
POZ	Nauen	11.00
	Suttgard	18.10
	Suttgard	41.00

HOLLAND

PCII	Hilversum	30.20-31.40
PKKK	Kootwijk	16.00
PCLL	Kootwijk	18.10
PCMM	The Hague	46.50
PCPP	Kootwijk	16.00
PCRR	Kootwijk	37.00
PCTT	Kootwijk	21.00
PCUU	The Hague	37.00

ITALY

IIAX	Rome	45.00
IAY	Placenza	20.00-45.00

JAPAN

JFAY	Taipei, Formosa	39.50
JHBB	Ibaraken	37.50
JJPP	Tokio	20.00
JKZB	Tokio	20.00
JOAK	Tokio	70.00
IAA	Iwatsuki	40.00

JAVA

ANE	Bandoeng	15.93
ANF	Malabar	56.00
ANH	Bandoeng	17.00

MEXICO

XG51	Mexico City	44.00
XFA	Mexico City	(0-14) (42-43)

NORWAY

LGN	Bergen	30.00
LCHO	Oslo	33.00

U. S. S. R. (RUSSIA)

RDW	Moscow	83.00
-----	--------	-------	-------

U. S. S. R. (SIBERIA)

RFM	Khabarovsk	70.20
RA19	Tomsk	37.00

SPAIN

EAR55	Barcelona	30.70
EAM	Madrid

SWEDEN

SAA	Karlskrona	44.40
SAJ	Karlsborg	47.00
SAS	Karlsborg	52.50
SMHA	Stockholm	41.00

SWITZERLAND

EH90C	Berne	32.00
EH9XD	Zurich	32.00

Information Welcomed From Fans on New Short Wave Calls Heard

WHAT'S ON THE AIR TONIGHT

First line: N.B.C. Key Station WEAF.
 Second line: N.B.C. Key Station WJZ.
 Third line: C.B.S. Key Station WABC.

RECORD YOUR DIAL NUMBERS OPPOSITE THE PROGRAM IN THE SPACE PROVIDED SO YOU MAY KNOW WHERE TO TUNE IN TO HEAR IT AGAIN

Mark your choice in the order of preference 1, 2, 3.

Dial	WEDNESDAY	Dial	THURSDAY	Dial	FRIDAY	Dial	SATURDAY
	Black and Gold Orchestra		Black and Gold Orchestra		Black and Gold Orchestra		Black and Gold Orchestra
	New Yorker Hotel Orchestra				Whyte's Orchestra		Utica Jubilee Singers
	Closing Market Prices and "Going to Press"		Columbia Symphony Orchestra		Closing Market Prices and The Lone Wolf		Musical Vespers
	Black and Gold Orchestra		Black and Gold Orchestra		Raybestos Twins		Black and Gold Orchestra
	New Yorker Hotel Orchestra		Strickland's Park Central Or				The Gold Spot Pals
	Guy Lombardo and His Royal Canadians		Civic Repertory Plays—Eva Le Gallienne		Paul Specht's Orchestra		Nit Wit Hour of Burlesque
	The Family Goes Abroad		Midweek Federation Hymn Sing		The Eternal Question		The New Business World
	Twilight Melodies				Campus Carollers		St. Regis Hotel Orchestra
	Bernhard Levitow and his Commodore Ensemble		Paul Specht's Orchestra		Henry—George		Bernhard Levitow and his Commodore Ensemble
	(1) Golden Gems—(2) Mid-continent Petroleum Co.		Coward Comfort Hour		Broadway Lights		Phil Spitalny's Music
	Westinghouse Epics in Industry				Dixie Chorus		St. Regis Hotel Orchestra
			Bernhard Levitow and his Commodore Ensemble		Howard Fashion Plates		Bernhard Levitow and his Commodore Ensemble
	Mobiloil Orchestra		Fleischman Sunshine Hour		Cities Service Concert Orch and Cavaliers		Lyric Famous Challengers
	The Yeas' Foamers		Lehn & Fink Serenade		Triadors		Chicago Celebrities
	Grand Opera Concert		Tower—Izers		Brown-Bilt Footlights		Guy Lombardo and His Royal Canadians
	Happy Wonder Bakers		Fleischman Sunshine Hour		Cities Service Concert Orch. and Cavaliers		Laundryland Lyrics
	Sylvania Foresters		Champion Sparkers		Personalities at 711		Marvin Musicians
	Forty Fathom Trawlers—Sketch		The Columbians		Wahl Eversharp Penman		Dixie Echoes
	Ingram Shavers		Seiberling Singers		Salon Singers		Gen'l Elec. Hour—W. Damrosch
	Smith Brothers		Veedol Program		Interwoven Pair—Billy Jones and Ernie Hare		The Cub Reporter
	MacFadden Red Seal Hour		True Detective Mysteries		True Story Hour		Graybar's Mr. and Mrs.
	Palmolive Hour		Jack Frost's Melody Moments		Schraderstown Band		Gen'l Elec. Hour—W. Damrosch
			Maxwell House Concert		Philco Theatre Memories—Jessica Dragonette		Gillette Blades
	La Palina Smoker		Gold Seal Hour		True Story Hour		Gulbransen Hour—Henry Hadley and Symphony Orch.
	Palmolive Hour		Halsey Stuart Program—The Old Counsellor		Planters Pickers		Lucky Strike Dance Orchestra
	Neapolitan Nights		Atwater Kent Program		Armstrong Quakers		The Radio Guild
	Kolster Radio Hour		Temple Hour—Musical Prog		Bremer-Tully Time		Paramount-Publix Radio Hour
	National Grand Opera		Victor Program		Mystery House		Lucky Strike Dance Orchestra
	Stromberg-Carlson Program		Atwater Kent Program		Armour Program		The Radio Guild
	In a Russian Village		Nat. Forum from Washington		Daguerreotypes		Paramount-Publix Radio Hour
	National Grand Opera		National Broadcasting and Concert Bureau Hour		St. Regis Hotel Orchestra		Lew White Organ Recital
	Amos 'n' Andy, Comedians		Amos 'n' Andy, Comedians		Amos 'n' Andy, Comedians		Amos 'n' Andy, Comedians
	Hank Simmons' Show Boat		The Dream Boat—Melodies from the Land of Nod		Jan Garber's Orchestra		Guy Lombardo and His Royal Canadians
	National Grand Opera		(1) Spitalny's Music—(2) Max Dolin and His Kvlectroneers		St. Regis Hotel Orchestra		Strickland's Park Central Or.
	Slumber Music		Slumber Music		Slumber Music		Slumber Music
	Hank Simmons' Show Boat		Hotel Paramount Orchestra		Abe Lyman's Orchestra		Hotel Paramount Orchestra

RADIO STATIONS IN MEXICO, WEST INDIES. CENTRAL & SOUTH AMERICA



Copyrighted by THE RADIO DIAL, New York

S. Newman N.Y.

Foreign Broadcasting Stations

MEXICO — WEST INDIES — CENTRAL AND SOUTH AMERICA

Station	Meters	Location	Power (Watts)	Station	Meters	Location	Power (Watts)
ARGENTINA							
B2	275	Buenos Aires	100	CM2JP	245.5	Habana	15
D3	253.3	Buenos Aires	100	CM2OH	300	Habana	15
LOJ	270	Buenos Aires	1000	CM2OK	360	Habana	100
LOL	236	Buenos Aires	2000	CM2RK	326	Habana	50
LON	210	Buenos Aires	5000	CM2SE	211	Habana	10
LOO	252	Buenos Aires	1000	CM2TW	270	Habana	10
LOQ	261.8	Buenos Aires	3000	CM2UF	228	Habana	100
LOR	344.8	Buenos Aires	1000	CM2WX	261	Habana	150
LOS	291.2	Buenos Aires	5000	CM2XA	230	Habana	200
LOT	400	Buenos Aires	1000	CM2XX	225	Habana	10
LOV	361.5	Buenos Aires	1000	CM2FG	226	Hershey	20
LOW	303	Buenos Aires	1000	CM2JF	252	Marianao	15
LOX	380	Buenos Aires	1000	CM2JL	294	Marianao	7½
LOY	315.2	Buenos Aires	1000	CM2MA	277	Marianao	50
LOZ	330	Buenos Aires	1000	CM2SW	274	Marianao	7½
H5	275	Cordoba	100	CM7NM	264	Nuevitas	20
H6	250	Cordoba	20	CM6HS	200	Sagua la Grande	10
LOP	425	La Plata	1000	CM6KP	280	Sancti Spiritus	20
LOU	380	Mendoza	500	CM6MN	210	Santa Clara	20
M6	348	Mendoza	10	CM8HS	200	Santiago	30
F2	270	Rosario	100	CM8BY	150	Santiago	30
F1	279	Santa Fe	20	CM8KW	250	Santiago	15
				CM6KW	368	Tuinucu	100
BOLIVIA				GUATEMALA			
.....	175	La Paz	50	310	Guatemala	1000
.....	300	La Paz	50	HAITI			
.....	...	La Paz	..	HHK	361.2	Port au Prince	1000
BRAZIL				MEXICO			
SKV	600	Bahia	50	XFF	325	Chihuahua	250
SQBE	24	Bahia	..	XEA	250	Guadalajara	100
SQAF	340	Curytiba	8	XFC	475	Jalapa	350
SQAY	380	Juiz de Fora	200	XES	250	Lerdo	250
.....	34	Para	..	XEY	548.6	Merida	100
.....	310	Pernambuco	300	XEB	450	Mexico City	1000
.....	...	Porto Alegre	..	XEN	410	Mexico City	1000
SQAA	400	Rio de Janeiro	2000	XEX	325	Mexico City	500
SQAB	310	Rio de Janeiro	500	XFA	500-600	Mexico City	50
SQAJ	260	Rio de Janeiro	500	XFG	470	Mexico City	2000
SQAI	280	Santos	10	XFI	507	Mexico City	1000
SQBO	225.4	Sao Paulo	1000	XFJ	357	Mexico City	500
SQAG	360	Sao Paulo	1000	XEH	311	Monterrey	100
SQAK	350	Sao Paulo	10	XEI	300	Morelia	100
.....	425	Sorocaba	..	XEF	265	Oaxaca	100
CHILE				PARAGUAY			
CMAO	...	Antofagasta	Asuncion	12
CMAI	345	Concepcion	1500	PERU			
CMAD	320	Santiago	1000	OAX	360	Lima	1500
CMAE	280	Santiago	100	SALVADOR			
CMAT	550	Tacna	200	AQM	482	Salvador	500
.....	...	Talcahuano	..	URUGUAY			
CMAK	245	Temuco	100	CWOA	428.4	Montevideo	1000
.....	400	Valparaiso	50	CWOF	300	Montevideo	100
CUBA				VENEZUELA			
CM6EV	250	Caibarien	50	AYRE	375	Caracas	1000
CM6LO	325	Caibarien	250				
CM7AZ	225	Camaguey	10				
CM7GT	195	Camaguey	5				
CM7LO	230	Camaguey	20				
CM6YR	200	Camajuani	20				
CM7BY	235	Ciego de Avila	20				
CM7FU	200	Ciego de Avila	15				
CM7HS	192	Ciego de Avila	15				
CM6BY	260	Cienfuegos	200				
CM5EV	360	Colon	100				
CM1AZ	275	Guanajay	30				
CMI	365	Habana	500				
CMC	347	Habana	500				
CM2AB	250	Habana	10				
CM2AR	341	Habana	75				
CM2AZ	334	Habana	30				
CM2CP	280	Habana	10				
CM2HP	205	Habana	200				

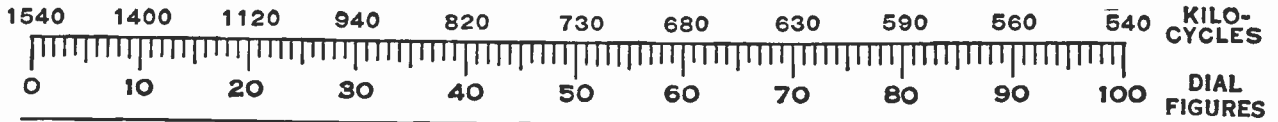
THE PRAGUE BROADCASTING FREQUENCY PLAN

The first frequency plan to receive the collective assent of the European governments was formulated at the Prague conference which terminated recently. Known as the Prague Plan, the new measure follows upon the decisions at the Washington Radio Convention, 1927, which provided that broadcasting frequencies should be dealt with by government action. The plan, which is notable for the inclusion of Russian stations, is due to come into operation on June 30, 1929.

The official list of Foreign Broadcasting Stations published by the International Bureau of the Telegraph Union, Berne, Switzerland, is not yet available but the complete list of call signals and frequency assignments will appear in the next edition of The Radio Dial.

Frequencies in kilo- cycles, approximate meters in parentheses	Country	Frequencies in kilo- cycles, approximate meters in parentheses	Country
LOW FREQUENCIES		MEDIUM FREQUENCIES (Continued)	
160 (1,875)	Holland	842 (356)	Great Britain
167 (1,800)	Finland	851 (352)	Austria
174 (1,725)	France	855.5 (351)	Russia
183.5 (1,635)	Germany	860 (349)	Spain
193 (1,553)	Great Britain	869 (345)	France
202.5 (1,481)	Russia	878 (342)	Czechoslovakia
207.5 (1,444)	Aviation	887 (339)	Belgium
212.5 (1,411)	Poland	891.5 (337)	Russia
217.5 (1,380)	Aviation	896 (335)	Poland
222.5 (1,348)	Sweden	905 (332)	Italy
230 (1,304)	Russia	914 (329)	France
250 (1,200)	Turkey	923 (325)	Germany
250 (1,200)	Iceland	932 (322)	Sweden
260 (1,153)	Denmark	941 (318)	Bulgaria
280 (1,072)	Norway	950 (316)	France
297 (1,010)	Switzerland	959 (313)	Poland
		968 (310)	Great Britain
		977 (307)	Yugoslavia
		986 (304)	France
		995 (301)	Great Britain
		1,004 (298)	Holland
		1,013 (295)	Estonia
		1,022 (293)	France
		1,022 (293)	Czechoslovakia
		1,031 (291)	Finland
		1,040 (289)	Great Britain
		1,049 (286)	France
		1,058 (283)	Portugal
		1,067 (281)	Denmark
		1,076 (279)	Czechoslovakia
		1,085 (276)	Germany
		1,094 (274)	Italy
		1,103 (273)	France
		1,112 (270)	Greece
		1,121 (268)	Spain
		1,130 (265)	France
		1,139 (263)	Czechoslovakia
		1,148 (261)	Great Britain
		1,157 (259)	Germany
		1,166 (257)	Sweden
		1,175 (255)	France
		1,184 (253)	Germany
		1,193 (251)	Spain
		1,202 (250)	Czechoslovakia
		1,211 (248)	Italy
		1,220 (246)	Common wave
		1,229 (244)	Albania (provisionally Poland)
		1,238 (242)	Great Britain
		1,274 (240)	Norway
		1,256 (239)	Germany
		1,265 (237)	Divided between Monaco, Nice, and Corsica
		1,274 (235)	Norway
		1,301 (231)	Sweden
		1,310 (229)	Spain
		1,319 (227)	Germany
		1,328 (226)	Rumania
		1,337 (225)	Ireland
		1,346 (223)	Luxembourg
		1,355 (221)	Finland
		1,364 (220)	France
		1,373 (218)	Common wave
		1,382 (217)	Common wave
		1,391 (216)	Common wave
		1,400 (214)	Poland
		1,410 (213)	Italy
		1,420 (211)	Rumania
		1,430 (210)	Hungary
		1,440 (208)	Belgium
		1,450 (207)	Common wave
		1,460 (206)	Common wave
		1,470 (204)	Common wave
		1,480 (203)	Common wave
		1,490 (202)	Common wave
		1,500 (200)	Free

CHANNEL CHART



Station Location Power (Watts) 550 Kilocycles—545.1 Meters

Station	Location	Power (Watts)
WEAN	Providence, R. I.	500
WGR	Amherst, N. Y.	1,000
WKRC	Cincinnati, Ohio	500
KFUO	St. Louis, Mo.	1,000
KFDY	Brookings, S. D.	1,000
KFYR	Bismarck, N. D.	500
KSD	St. Louis, Mo.	500
KTAB	Oakland, Cal.	500

560 Kilocycles—535.4 Meters Approximate Dial Readings 90

Station	Location	Power (Watts)
WFI	Philadelphia, Pa.	500
W'OD	Miami Beach, Fla.	1,000
WLIT	Philadelphia, Pa.	500
WNOX	Knoxville, Tenn.	2,000
WOI	Ames, Iowa	5,000
KFDM	Beaumont, Tex.	1,000
KFEQ	St. Joseph, Mo.	2,500
KLZ	Dupont, Colo.	1,000
KOAC	Corvallis, Ore.	1,000

570 Kilocycles—526.0 Meters

Station	Location	Power (Watts)
WEAO	Columbus, Ohio	750
WIBO	Chicago, Ill.	1,500
WKBN	Youngstown, Ohio	500
WMAC	Cazenovia, N. Y.	250
WMCA	New York City	500
WNAX	Yankton, S. D.	1,000
WNVC	New York City	500
WPCC	Chicago, Ill.	500
WSMK	Dayton, Ohio	200
WSYR	Syracuse, N. Y.	250
WUNC	Asheville, N. C.	1,000
KGKO	Wichita Falls, Tex.	500
KMTR	Hollywood, Calif.	1,000
KUOM	Missoula, Mont.	500
KXA	Seattle, Wash.	500

580 Kilocycles—516.9 Meters

Station	Location	Power (Watts)
WOBU	Charleston, W. Va.	250
WSAZ	Huntington, W. Va.	250
WSUT	Iowa City, Iowa	500
WTAG	Worcester, Mass.	250
KGFX	Pierre, S. D.	200
KSNAC	Manhattan, Kan.	1,000
CHMA	Edmonton, Alta.	250
CJCA	Edmonton, Alta.	500
CJSC	Toronto, Ont.	500
CKCL	Toronto, Ont.	500
CKXC	Toronto, Ont.	500
CKUA	Edmonton, Alta.	500
CNRE	Edmonton, Alta.	500

590 Kilocycles—508.2 Meters Approximate Dial Readings 80

Station	Location	Power (Watts)
WCAJ	Lincoln, Neb.	500
WEEI	Weymouth, Mass.	1,000
WFMC	Berrien Springs, Mich.	1,000
WOW	Omaha, Neb.	1,000
KHQ	Spokane, Wash.	2,000

600 Kilocycles—499.7 Meters

Station	Location	Power (Watts)
WCAC	Storrs, Conn.	250
WCAO	Baltimore, Md.	250
WEBW	Beloit, Wis.	350
WOAN	Lawrenceburg, Tenn.	500
WFEC	Whitehaven, Tenn.	1,000
KFSD	San Diego, Cal.	1,000
KWYO	Laramie, Wyo.	500
CFCH	Iroquois Falls, Ont.	250
CJRM	Moose Jaw, Sask.	500
CJRW	Fleming, Sask.	500

Station Location Power (Watts) 610 Kilocycles—491.5 Meters

Station	Location	Power (Watts)
WDAF	Kansas City, Mo.	1,000
WFAN	Philadelphia, Pa.	500
WIP	Philadelphia, Pa.	500
WQQ	Kansas City, Mo.	1,000
KFRC	San Francisco, Cal.	1,000

620 Kilocycles—483.6 Meters

Station	Location	Power (Watts)
WDAE	Tampa, Fla.	1,000
WDBO	Orlando, Fla.	1,000
WBZ	Bangor, Me.	500
WJAY	Cleveland, Ohio	500
WTMJ	Brookfield, Wis.	2,500
KFAD	Phoenix, Ariz.	500
KGW	Portland, Ore.	1,000

630 Kilocycles—475.9 Meters Approximate Dial Readings 70

Station	Location	Power (Watts)
WGBF	Evansville, Ind.	500
WMAL	Washington, D. C.	500
WOS	Jefferson City, Mo.	1,000
KFRU	Columbia, Mo.	500
CFCT	Victoria, B. C.	500
CJGX	Yorktown, Sask.	500
CNRA	Moncton, N. B.	500

640 Kilocycles—468.5 Meters

Station	Location	Power (Watts)
WA!U	Columbus, Ohio	500
KFI	Los Angeles, Calif.	5,000

650 Kilocycles—461.3 Meters

Station	Location	Power (Watts)
WSM	Nashville, Tenn.	5,000

660 Kilocycles—454.3 Meters

Station	Location	Power (Watts)
WAAW	Omaha, Neb.	500
WEAF	New York, N. Y.	50,000

670 Kilocycles—447.5 Meters

Station	Location	Power (Watts)
WMAQ	Chicago, Ill.	5,000

680 Kilocycles—440.9 Meters Approximate Dial Readings 60

Station	Location	Power (Watts)
WPTF	Raleigh, N. C.	1,000
KPO	San Francisco, Cal.	5,000

690 Kilocycles—434.5 Meters

Station	Location	Power (Watts)
CFAC	Calgary, Alta.	500
CFCN	Calgary, Alta.	1,800
CHCA	Calgary, Alta.	250
CJCA	Calgary, Alta.	250
CKCO	Ottawa, Ont.	100
CNRC	Calgary, Alta.	500
CNRO	Ottawa, Ont.	500

700 Kilocycles—428.3 Meters

Station	Location	Power (Watts)
WLW	Cincinnati, Ohio	50,000

Station Location Power (Watts) 710 Kilocycles—422.3 Meters

Station	Location	Power (Watts)
WOR	Newark, N. J.	5,000
KFVD	Culver City, Cal.	250

720 Kilocycles—416.4 Meters

Station	Location	Power (Watts)
WGN-WLIB	Chicago, Ill.	25,000

730 Kilocycles—410.7 Meters Approximate Dial Readings 50

Station	Location	Power (Watts)
CHLS	Vancouver, B. C.	50
CHYC	Montreal, Que.	750
CKAC	Montreal, Que.	1,200
CKCD	Vancouver, B. C.	50
CKFC	Vancouver, B. C.	50
CKMO	Vancouver, B. C.	50
CKWX	Vancouver, B. C.	100
CNRM	Montreal, P. Q.	1,000-1,650

740 Kilocycles—405.2 Meters

Station	Location	Power (Watts)
WSB	Atlanta, Ga.	5,000
KMMJ	Clay Center, Neb.	1,000

750 Kilocycles—399.8 Meters

Station	Location	Power (Watts)
WJR	Detroit, Mich.	5,000

760 Kilocycles—394.5 Meters

Station	Location	Power (Watts)
WEW	St. Louis, Mo.	1,000
WJZ	New York, N. Y.	30,000
KVI	Tacoma, Wash.	1,000

770 Kilocycles—389.4 Meters

Station	Location	Power (Watts)
WBBM-WJBT	Chicago, Ill.	10,000
KFAB	Lincoln, Neb.	5,000

780 Kilocycles—384.4 Meters

Station	Location	Power (Watts)
WBSO	Babson Park, Mass.	250
WMC	Memphis, Tenn.	1,000
WTAR-WPOR	Norfolk, Va.	500
KELW	Burbank, Cal.	500
KTM	Los Angeles, Cal.	1,000
CKY	Winnipeg, Man.	500
CNRW	Winnipeg, Man.	500

790 Kilocycles—379.5 Meters

Station	Location	Power (Watts)
WGY	Schenectady, N. Y.	50,000
KGO	Oakland, Cal.	7,500

800 Kilocycles—374.8 Meters

Station	Location	Power (Watts)
WBAP	Ft. Worth, Texas	50,000
WFAA	Dallas, Tex.	50,000

Channel Chart Continued

Station Location Power (Watts)

810 Kilocycles—370.2 Meters

--	--	--

WCCO Minneapolis, Minn. 7,500
 WPCH New York, N. Y. 500

820 Kilocycles—365.6 Meters

Approximate Dial Readings 40

--	--	--

WHAS Louisville, Ky. 5,000

830 Kilocycles—361.2 Meters

--	--	--

WHDH Gloucester, Mass. 1,000
 KOA Denver, Colo. 12,500

840 Kilocycles—356.9 Meters

--	--	--

CFCA Toronto, Ont. 500
 CHCT Red Deer, Alta. 1,000
 CKLC Red Deer, Alta. 1,000
 CKOW Toronto, Ont. 500
 CNRT Toronto, Ont. 500

850 Kilocycles—352.7 Meters

--	--	--

WWL New Orleans, La. 5,000
 KWKH Kennonwood, La. 10,000

860 Kilocycles—348.6 Meters

--	--	--

WABC-WBOQ New York, N. Y. 5,000
 KFQZ Hollywood, Cal. 250

870 Kilocycles—344.6 Meters

--	--	--

WENR-WBCN Chicago, Ill. 50,000
 WLS Chicago, Ill. 5,000

880 Kilocycles—340.7 Meters

--	--	--

WCOG Columbus, Miss. 500
 WGBI Scranton, Pa. 250
 WQAN Scranton, Pa. 250
 KFKA Greeley, Colo. 1,000
 KLX Oakland, Cal. 500
 KPOF Denver, Colo. 500
 CHCS Hamilton, Ont. 10
 CHML Hamilton, Ont. 50
 CHRC Quebec, Que. 5
 CJCJ Sydney, N. S. 50
 CKCI Quebec, Que. 22.5
 CKCV Quebec, P. Q. 50
 CKOC Hamilton, Ont. 100
 CNRQ Quebec, P. Q. 500

890 Kilocycles—336.9 Meters

--	--	--

WGST Atlanta, Ga. 500
 WILL Urbana, Ill. 500
 WJAR Providence, R. I. 400
 WKAQ San Juan, P. R. 500
 WMAZ Macon, Ga. 500
 WMMN Fairmont, W. Va. 500
 KFNF Shenandoah, Iowa 1,000
 KGJF Little Rock, Ark. 250
 KUSD Vermillion, S. D. 750
 CFBO St. John, N. B. 50

Station Location Power (Watts)

900 Kilocycles—333.1 Meters

--	--	--

WFBL Syracuse, N. Y. 750
 WFLA-WSUN Clearwater, Fla. 2,500
 WKY Oklahoma City, Okla. 1,000
 WLBI Stevens Point, Wis. 2,000
 WMAK Buffalo, N. Y. 750
 KGBU Ketchikan, Alaska 500
 KHJ Los Angeles, Cal. 1,000
 KSEI Pocatello, Ida. 250

910 Kilocycles—329.5 Meters

--	--	--

CFQC Saskatoon, Sask. 500
 CJGC London, Ont. 500
 CJHS Saskatoon, Sask. 250
 CNRL London, Ont. 500
 CNRS Saskatoon, Sask. 500

920 Kilocycles—325.9 Meters

--	--	--

WAAF Chicago, Ill. 500
 WWJ Detroit, Mich. 1,000
 KOMO Seattle, Wash. 1,000
 KPRC Houston, Texas 1,000

930 Kilocycles—322.4 Meters

--	--	--

WBRC Birmingham, Ala. 500
 WDBJ Roanoke, Va. 500
 WBGJ Elkins Park, Pa. 50
 KFWI San Francisco, Calif. 500
 KFWM Oakland, Calif. 500
 KGBZ York, Neb. 1,000
 KMA Shenandoah, Iowa 1,000
 CHNS Hallifax, N. S. 500
 CKIC Wolfville, N. S. 50

940 Kilocycles—319.0 Meters

Approximate Dial Readings 30

--	--	--

WCSH Portland, Maine 500
 WFIW Hopkinsville, Ky. 1,000
 WFA Madison, Wis. 750
 KFEL Denver, Colo. 250
 KFNF Denver, Colo. 250
 KGT Honolulu, T. H. 500
 KOIN Portland, Ore. 1,000

950 Kilocycles—315.6 Meters

--	--	--

WHB Kansas City, Mo. 500
 WRC Washington, D. C. 500
 KFVB Hollywood, Cal. 1,000
 KGHL Billings, Mont. 500
 KMBC Independence, Mo. 2,500
 KPNS Pasadena, Calif. 1,000

960 Kilocycles—312.3 Meters

--	--	--

CFCY Charlottetown, P. E. I. 100
 CFRB King, York County, Ont. 1,000
 CHCK Charlottetown, P. E. I. 30
 CHWG Pilot Butte, Sask. 15
 CIBC Toronto, Ont. 1,000-5,000
 CJBR Regina, Sask. 500
 CKCK Regina, Sask. 500
 CKGW Bowmanville, Ont. 5,000
 CNRR Regina, Sask. 500

970 Kilocycles—309.1 Meters

--	--	--

WCFL Chicago, Ill. 1,500
 KJR Seattle, Wash. 5,000

Station Location Power (Watts)

980 Kilocycles—305.9 Meters

--	--	--

KDKA Pittsburgh, Pa. 50,000

990 Kilocycles—302.8 Meters

--	--	--

WBZ E. Springfield, Mass. 15,000
 WBZA Boston, Mass. 500

1000 Kilocycles—299.8 Meters

--	--	--

WHO Des Moines, Iowa 5,000
 WOC Davenport, Iowa 5,000
 KPLA Los Angeles, Cal. 1,000

1010 Kilocycles—296.9 Meters

--	--	--

WHN New York, N. Y. 250
 WNAD Norman, Okla. 500
 WQAO-WPAP New York, N. Y. 250
 WRNY New York, N. Y. 250
 KGGF Picher, Okla. 500
 KQW San Jose, Calif. 500
 CFLC Prescott, Ont. 50
 CKCR Brantford, Ont. 50
 CKSH St. Hyacinthe, P. Q. 50

1020 Kilocycles—293.9 Meters

--	--	--

WRAX Philadelphia, Pa. 250
 KYWA Chicago, Ill. 500
 KYW-KFKX Chicago, Ill. 5,000

1030 Kilocycles—291.1 Meters

--	--	--

CFCF Montreal, Que. 1,650
 CJOR Sea Island, B. C. 50
 CNRV Vancouver, B. C. 500

1040 Kilocycles—288.3 Meters

--	--	--

WKAR Lansing, Mich. 1,000
 WKEN Buffalo, N. Y. 1,000
 KRLD Dallas, Tex. 10,000
 KTHS Hot Springs, Ark. 10,000

1050 Kilocycles—285.5 Meters

--	--	--

KFKB Milford, Kans. 5,000
 KNX Hollywood, Calif. 5,000

1060 Kilocycles—282.8 Meters

--	--	--

WBAL Baltimore, Md. 50,000
 WJAG Norfolk, Neb. 1,000
 WTIC Hartford, Conn. 50,000
 KWJJ Portland, Ore. 500

1070 Kilocycles—280.2 Meters

--	--	--

WAAT Jersey City, N. J. 300
 WCAZ Carthage, Ill. 50
 WDZ Tuscola, Ill. 100
 WEAR Cleveland, Ohio 1,000
 WTAM Cleveland, Ohio 3,500
 KJBS San Francisco, Cal. 100

Channel Chart Continued

1080 Kilocycles—277.6 Meters

--	--	--

WBT	Charlotte, N. C.	5,000
WCBD	Zion, Ill.	5,000
WMBI	Chicago, Ill.	5,000

1090 Kilocycles—275.1 Meters

--	--	--

KMOX-KFQA	St. Louis, Mo.	50,000
------------------	---------------------	--------

1100 Kilocycles—272.6 Meters

--	--	--

WLWL	New York, N. Y.	5,000
WPG	Atlantic City, N. J.	5,000
KGIM	Stockton, Cal.	50

1110 Kilocycles—270.1 Meters

--	--	--

WRVA	Richmond, Va.	1,000
KSOO	Sioux Falls, S. D.	1,000

1120 Kilocycles—267.7 Meters

Approximate Dial Readings 20

--	--	--

WCOA	Pensacola, Fla.	500
WDEL	Wilmington, Del.	350
WIAD	Milwaukee, Wis.	250
WISN	Milwaukee, Wis.	250
WTAM	College Station, Tex.	500
KFSG	Los Angeles, Calif.	500
KMIC	Inglewood, Calif.	500
KRSC	Seattle, Wash.	50
KUT	Austin, Tex.	500
CFJC	Kamloops, B. C.	15
CFRC	Kingston, Ont.	500
CHGS	Summerside, P. E. I.	25
CJOC	Lethbridge, Alta.	50
CKPR	Midland, Ont.	50

1130 Kilocycles—265.3 Meters

--	--	--

WJJD	Mooseheart, Ill.	20,000
WOV	New York, N. Y.	1,000
KSL	Salt Lake City, Utah	5,000

1140 Kilocycles—263.0 Meters

--	--	--

WAPI	Birmingham, Ala.	5,000
KVOO	Tulsa, Okla.	5,000

1150 Kilocycles—260.7 Meters

--	--	--

WHAM	Rochester, N. Y.	5,000
-------------	-----------------------	-------

1160 Kilocycles—258.5 Meters

--	--	--

WWVA	Wheeling, W. Va.	250
WOWO	Ft. Wayne, Ind.	10,000

1170 Kilocycles—256.3 Meters

--	--	--

WCAU	Philadelphia, Pa.	10,000
KEJK	Beverly Hills, Cal.	500
KTNT	Muscateine, Iowa	5,000

1180 Kilocycles—254.1 Meters

--	--	--

WDGY	Minneapolis, Minn.	500
WGBS	New York, N. Y.	500
WHDJ	Minneapolis, Minn.	500
KEX	Portland, Ore.	5,000
KOB	State College, N. Mex.	20,000

1190 Kilocycles—252.0 Meters

--	--	--

WICC	Bridgeport, Conn.	500
WOAI	San Antonio, Tex.	5,000

1200 Kilocycles—249.9 Meters

--	--	--

WABI	Bangor, Me.	100
WABZ	New Orleans, La.	100
WBBY	Charleston, S. C.	75
WBBZ	Ponca City, Okla.	100
WCAT	Rapid City, S. D.	100
WCLO	Kenosha, Wis.	100
WCOD	Harrisburg, Pa.	100
WEPS	Grochester, Mass.	100
WFBC	Knoxville, Tenn.	50
WHBC	Canton, Ohio	10
WIBY	West De Pere, Wis.	100
WIBX	Utica, N. Y.	300
WIL	St. Louis, Mo.	250
WJBC	La Salle, Ill.	100
WJBL	Decatur, Ill.	100
WJBW	New Orleans, La.	30
WKJC	Lancaster, Pa.	100
WLAP	Louisville, Ky.	30
WLBG	Petersburg, Va.	250
WMAY	St. Louis, Mo.	250
WMT	Waterloo, Iowa	250
WNBO	Washington, Pa.	100
WNBW	Carbondale, Pa.	10
WNBX	Springfield, Vt.	10
WORC	Auburn, Mass.	100
WRAF	La Porte, Ind.	100
WRBL	Columbus, Ga.	50
WWAE	Hammond, Ind.	100
KFHA	Gunnison, Colo.	100
KFJB	Marshalltown, Ia.	100
KFKZ	Kirksville, Mo.	15
KFWC	Ontario, Calif.	100
KFWF	St. Louis, Mo.	100
KGCU	Mandan, N. D.	100
KGDE	Fergus Falls, Minn.	50
KGDY	Oldham, S. D.	15
KGEK	Yuma, Colo.	50
KGEW	Ft. Morgan, Colo.	100
KGFK	Hallock, Minn.	50
KGY	Lacey, Wash.	50
KMJ	Fresno, Calif.	100
KPPC	Pasadena, Calif.	50
KSMR	Santa Maria, Calif.	100
KVOS	Bellingham, Wash.	100
KWG	Stockton, Calif.	100
KXO	El Centro, Cal.	100

1210 Kilocycles—247.8 Meters

--	--	--

WBAX	Wilkes-Barre, Pa.	100
WCBS	Springfield, Ill.	100
WCOH	Yonkers, N. Y.	100
WCRW	Chicago, Ill.	100
WDWF-WLSI	Providence, R. I.	100
WEBE	Cambridge, Ohio	100
WEBQ	Harrisburg, Ill.	100
WEDC	Chicago, Ill.	100
WGBB	Freeport, N. Y.	100
WGCM	Gulfport, Miss.	100
WHBF	Rock Island, Ill.	100
WHBU	Anderson, Ind.	100
WIBA	Madison, Wis.	100
WINR	Bayshore, N. Y.	100
WJBI	Redbank, N. J.	100
WJBU	Lewisburg, Pa.	100
WJBY	Gadsden, Ala.	50
WJW	Mansfield, Ohio	100
WLCI	Ithaca, N. Y.	50
WMAN	Columbus, Ohio	50
WMBG	Richmond, Va.	100
WMBR	Tampa, Fla.	100
WOCL	Jamesstown, N. Y.	25
WOMT	Manitowoc, Wis.	100
WPAW	Pawtucket, R. I.	100
WRBG	Greenville, Miss.	100
WRBU	Gastonia, N. C.	100
WSBC	Chicago, Ill.	100
WSIX	Springfield, Tenn.	100
WTAX	Streator, Ill.	50
WTAX	Richmond, Va.	15
KDLR	Devils Lake, N. D.	100
KFOR	Lincoln, Neb.	100
KFVS	Cape Girardeau, Mo.	100
KGCR	Brookings, S. D.	100
KPCB	Seattle, Wash.	50
KPQ	Seattle, Wash.	100
KWEA	Shreveport, La.	100
CFCO	Chatham, Ont.	25
CFNB	Fredericton, N. B.	50
CHWK	Chilliwack, B. C.	5
CKMC	Cobalt, Ont.	15
CKPC	Preston, Ont.	25

1220 Kilocycles—245.8 Meters

--	--	--

WCAD	Canton, N. Y.	500
WCAE	Pittsburgh, Pa.	500
WREN	Lawrence, Kan.	1,000
KFKU	Lawrence, Kan.	1,000

1230 Kilocycles—243.8 Meters

--	--	--

WFBM	Indianapolis, Ind.	1,000
WNAC-WBIS	Boston, Mass.	1,000
WPNC	State College, Pa.	500
WSBT	South Bend, Ind.	500
KFIO	Spokane, Wash.	100
KFQD	Anchorage, Alaska	100
KGGM	Albuquerque, N. Mex.	500
KYA	San Francisco, Calif.	1,000

1240 Kilocycles—241.8 Meters

--	--	--

WGHP	Detroit, Mich.	750
WJAD	Waco, Tex.	1,000
WQAM	Miami, Fla.	1,000
WRBC	Valparaiso, Ind.	500
KTAT	Fort Worth, Tex.	1,000

Channel Chart Continued

1250 Kilocycles—239.9 Meters

--	--	--

WAAM	Newark, N. J.	2,000
WCAL	Northfield, Minn.	1,000
WDSU	New Orleans, La.	1,000
WGCP	Newark, N. J.	250
WLB-WGMS	Minneapolis, Minn.	500
WODA	Paterson, N. J.	1,000
WRHM	Minneapolis, Minn.	1,000
KFOX	Long Beach, Cal.	1,000
KFMX	Northfield, Minn.	1,000
KIDO	Boise, Idaho	1,000
XXL	Portland, Ore.	500

1260 Kilocycles—238.0 Meters

--	--	--

WJAX	Jacksonville, Fla.	1,000
WLBW	Oil City, Pa.	500
KOIL	Council Bluffs, Ia.	2,500
KRGV	Harlingen, Texas	500
KVOA	Tucson, Ariz.	500
KWWG	Brownsville, Texas	500

1270 Kilocycles—236.1 Meters

--	--	--

WASH	Grand Rapids, Mich.	250
WEAI	Ithaca, N. Y.	500
WFBR	Baltimore, Md.	250
WOOD	Grand Rapids, Mich.	500
KFUM	Colorado Springs, Colo.	1,000
KGCA	Decorah, Ia.	50
KOL	Seattle, Wash.	1,000
KTW	Seattle, Wash.	1,000
KWLC	Decorah, Ia.	100

1280 Kilocycles—234.2 Meters

--	--	--

WCAM	Camden, N. J.	500
WCAP	Asbury Park, N. J.	500
WDAY	Fargo, N. D.	1,000
WDOD	Chattanooga, Tenn.	2,500
WEBC	Duluth, Minn.	1,000
WOAX	Trenton, N. J.	500
WRR	Dallas, Tex.	500

1290 Kilocycles—232.4 Meters

--	--	--

WJAS	Pittsburgh, Pa.	1,000
WNBZ	Saranac Lake, N. Y.	50
KDYL	Salt Lake City, Utah	1,000
KFUL	Galveston, Tex.	1,000
KLCN	Blytheville, Ark.	50
KTSA	San Antonio, Tex.	2,000

1300 Kilocycles—230.6 Meters

--	--	--

WBBR	Rossville, N. Y.	1,000
WEVD	New York, N. Y.	50
WHAP	New York, N. Y.	1,000
WHAZ	Troy, N. Y.	500
WIBW	Topeka, Kan.	2,500
KFH	Wichita, Kan.	1,000
KFJR	Portland, Ore.	500
KGEF	Los Angeles, Calif.	1,000
KTBI	Los Angeles, Cal.	750
KTBR	Portland, Ore.	500

1310 Kilocycles—228.9 Meters

--	--	--

WAGM	Royal Oak, Mich.	50
WBOW	Terre Haute, Ind.	100
WBRE	Wilkes-Barre, Pa.	100
WCLS	Joliet, Ill.	100
WDAH	El Paso, Tex.	100
WEBR	Buffalo, N. Y.	200
WEHS	Evanston, Ill.	100
WFBG	Altoona, Pa.	100
WFDF	Flint, Mich.	100
WFKD	Philadelphia, Pa.	50
WGAL	Lancaster, Pa.	15
WGH	Newport News, Va.	100
WHFC	Cicero, Ill.	100
WIBU	Poynette, Wis.	100
WJAC	Johnstown, Pa.	100
WJAK	Marion, Ind.	50
WKAU	Laconia, N. H.	100
WKBB	Joliet, Ill.	100
WKBI	Chicago, Ill.	50
WKBC	Birmingham, Ala.	100
WKBS	Galesburg, Ill.	100
WLBC	Muncie, Ind.	50
WMBL	Lakeland, Fla.	100
WOBT	Union City, Tenn.	250
WOL	Washington, D. C.	100
WNAT	Philadelphia, Pa.	100
WNBH	New Bedford, Mass.	100
WNBK	Knoxville, Tenn.	50
WRAW	Reading, Pa.	100
WRBI	Tifton, Ga.	20
WRK	Hamilton, Ohio	100
WSAJ	Grove City, Pa.	100
KFBK	Sacramento, Calif.	100
KFGQ	Boone, Ia.	100
KFJY	Ft. Dodge, Ia.	100
KFPL	Dublin, Tex.	15
KFPM	Greenville, Tex.	15
KFUP	Denver, Colo.	100
KFXJ	Edgewater, Colo.	50
KFXR	Oklahoma City, Okla.	100
KGEZ	Kalispell, Mont.	100
KGFW	Ravena, Neb.	50
KGHG	McGeehee, Ark.	50
KMED	Medford, Ore.	50
KRMD	Shreveport, La.	50
KTSL	Shreveport, La.	100
KTSM	El Paso, Tex.	100
KWCR	Cedar Rapids, Ia.	100

1320 Kilocycles—227.1 Meters

--	--	--

WADC	Akron, Ohio	1,000
WSMB	New Orleans, La.	500
KGHF	Pueblo, Colo.	250
KGIO	Idaho Falls, Ida.	250
KGIQ	Twin Falls, Ida.	250
KTD	Idaho Falls, Idaho	250

1330 Kilocycles—225.4 Meters

--	--	--

WDRG	New Haven, Conn.	500
WTAQ	Eau Claire, Wis.	1,000
WSAI	Cincinnati, O.	500
KSCJ	Sioux City, Ia.	2,500

1340 Kilocycles—223.7 Meters

--	--	--

WSPD	Toledo, Ohio	500
KFPW	Siloam Springs, Ark.	50
KMO	Tacoma, Wash.	500

1350 Kilocycles—222.1 Meters

--	--	--

WBNY	New York, N. Y.	250
WCDA	New York, N. Y.	250
WKBQ	New York, N. Y.	250
WMSG	New York, N. Y.	250
KWK	St. Louis, Mo.	1,000

1360 Kilocycles—220.4 Meters

--	--	--

WGES	Chicago, Ill.	500
WJKS	Gary, Ind.	1,250
WLEX	Lexington, Mass.	500
WMAF	S. Dartmouth, Mass.	500
WQBC	Utica, Miss.	300
KFBB	Havre, Mont.	500
KGB	San Diego, Calif.	250
KGIR	Butte, Mont.	250

1370 Kilocycles—218.8 Meters

--	--	--

WBBL	Richmond, Va.	100
WCBM	Baltimore, Md.	100
WELK	Philadelphia, Pa.	100
WFBJ	Collegeville, Minn.	100
WGL	Ft. Wayne, Ind.	100
WHBD	Bellefontaine, O.	100
WHBF	Memphis, Tenn.	100
WHDF	Calumet, Mich.	250
WIBM	Jackson, Mich.	100
WJBK	Ypsilanti, Mich.	50
WJBO	New Orleans, La.	100
WMBO	Auburn, N. Y.	100
WRAK	Erie, Pa.	50
WRBT	Wilmington, N. C.	100
WRJN	Racine, Wis.	100
WSVS	Buffalo, N. Y.	50
KCRC	Enid, Okla.	250
KFBL	Everett, Wash.	50
KFJI	Astoria, Ore.	100
KFJM	Grand Forks, N. D.	100
KFJZ	Ft. Worth, Tex.	100
KFLX	Galveston, Tex.	100
KGAR	Tucson, Ariz.	100
KGBX	St. Joseph, Mo.	100
KGCI	San Antonio, Tex.	100
KGDA	Dell Rapids, S. D.	50
KGER	Long Beach, Calif.	100
KGFG	Oklahoma City, Okla.	100
KGFL	Raton, N. M.	50
KGKL	San Angelo, Tex.	100
KGRC	San Antonio, Tex.	100
KIT	Yakima, Wash.	50
KLO	Ogden, Utah	200
KOH	Reno, Nevada	100
KOOS	Marshfield, Ore.	50
KRE	Berkeley, Calif.	100
KVL	Seattle, Wash.	100
KWKC	Kansas City, Mo.	100
KZM	Hayward, Calif.	100

1380 Kilocycles—217.3 Meters

--	--	--

WKBH	LaCrosse, Wis.	1,000
KQV	Pittsburgh, Pa.	500
KSO	Clarinda, Ia.	500

1390 Kilocycles—215.7 Meters

--	--	--

WHK	Cleveland, Ohio	1,000
KFPY	Spokane, Wash.	500
KOY	Phoenix, Ariz.	500
KLRA	Little Rock, Ark.	1,000
KUOA	Fayetteville, Ark.	1,000
KWSC	Pullman, Wash.	500

Channel Chart Continued

Station Location Power (Watts)
1400 Kilocycles—214.2 Meters

Approximate Dial Readings 10

--	--	--

WBBC	Brooklyn, N. Y.	500
WCGU	Coney Island, N. Y.	500
WCMA	Culver, Ind.	500
WKBF	Indianapolis, Ind.	500
WLTH	Brooklyn, N. Y.	500
WSGH-WSDA	Brooklyn, N. Y.	500
KOCW	Chickasha, Okla.	500

1410 Kilocycles—212.6 Meters

--	--	--

WBCM	Bay City, Mich.	500
WDAG	Amarillo, Tex.	500
WHBL	Sheboygan, Wis.	500
WSGP	Savannah, Ga.	1,000
KFLV	Rockford, Ill.	500
KGRS	Amarillo, Tex.	1,000

1420 Kilocycles—211.1 Meters

--	--	--

WEDH	Erie, Pa.	30
WHDL	Tupper Lake, N. Y.	10
WHHS	Bluefield, W. Va.	100
WIAS	Ottumwa, Iowa	100
WIBR	Steubenville, Ohio	50
WILM	Wilmington, Del.	100
WKBP	Battle Creek, Mich.	50
WLBK	Kansas City, Kan.	100
WLEY	Lexington, Mass.	250
WMBC	Detroit, Mich.	100
WMBH	Joplin, Mo.	250
WMRJ	Jamaica, N. Y.	10
WPOE	Patchogue, N. Y.	30
WQBZ	Weirton, W. Va.	60
WRBJ	Hattiesburg, Mass.	100
WSSH	Boston, Mass.	250
WTBO	Cumberland, Md.	50
KFIF	Portland, Ore.	100
KFIZ	Fon du Lac, Wis.	100
KFQU	Holy City, Calif.	100
KFQW	Seattle, Wash.	100
KFXD	Jerome, Idaho	50
KFXV	Flagstaff, Ariz.	100
KFYV	Abilene, Tex.	250
KGCX	Vida, Mont.	10
KGFF	Alva, Okla.	100
KGFI	Los Angeles, Cal.	100
KGCC	San Francisco, Cal.	50
KGIV	Trinidad, Colo.	100
KGIX	Las Vegas, Nev.	100
KGKG	Minot, N. D.	100
KGKK	Sandpoint, Idaho	15
KICK	Red Oak, Iowa	100
KORE	Eugene, Ore.	100
KTAP	San Antonio, Tex.	100
KTUF	Houston, Tex.	100
KXRO	Aberdeen, Wash.	75

1430 Kilocycles—209.7 Meters

--	--	--

WBAK	Harrisburg, Pa.	500
WBRL	Tilton, N. H.	500
WCAH	Columbus, Ohio	500
WGBC	Memphis, Tenn.	500
WHP	Harrisburg, Pa.	500
WNBR	Memphis, Tenn.	500

1440 Kilocycles—208.2 Meters

--	--	--

WCBA	Allentown, Pa.	250
WHBC-WABO	Rochester, N. Y.	500
WMBD	Peoria Hts., Ill.	1,000
WNRC	Greensboro, N. C.	250
WOKO	Poughkeepsie, N. Y.	500
WSAN	Allentown, Pa.	250
WTAD	Quincy, Ill.	500
KLS	Oakland, Calif.	250

Station Location Power (Watts)
1450 Kilocycles—206.8 Meters

--	--	--

WBMS	Fort Lee, N. J.	250
WCSS	Springfield, Ohio	500
WFJC	Akron, Ohio	500
WIBS	Elizabeth, N. J.	250
WKBO	Jersey City, N. J.	250
WNIJ	Newark, N. J.	250
WSAR	Fall River, Mass.	250
WTFI	Toccoa, Ga.	250
KTBS	Shreveport, La.	500

1460 Kilocycles—205.4 Meters

--	--	--

WJSV	Mt. Vernon Hills, Va.	10,000
KSTP	St. Paul, Minn.	10,000

1470 Kilocycles—204.0 Meters

--	--	--

WKBW	Buffalo, N. Y.	5,000
WRUF	Gainesville, Fla.	5,000
KFJF	Oklahoma City, Okla.	5,000
KGA	Spokane, Wash.	5,000

1480 Kilocycles—202.6 Meters

--	--	--

WCKY	Covington, Ky.	5,000
WJAZ	Chicago, Ill.	5,000
WORD	Chicago, Ill.	5,000
WSOA	Forest Park, Ill.	5,000

1490 Kilocycles—201.2 Meters

--	--	--

WLAC	Nashville, Tenn.	5,000
WTNT	Nashville, Tenn.	5,000
KPWF	Westminster, Cal.	10,000

1500 Kilocycles—199.9 Meters

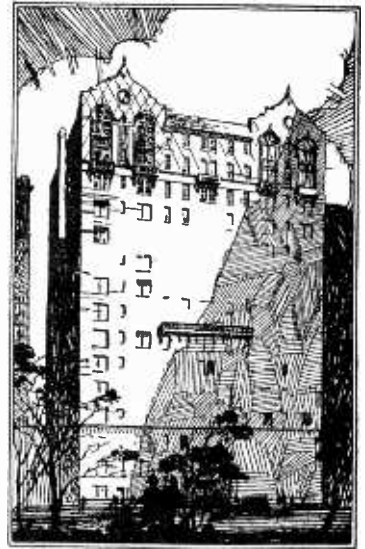
--	--	--

WCLB	Long Beach, N. Y.	100
WKBV	Brookville, Ind.	150
WKBZ	Ludington, Mich.	50
WLBX	Long Island City, N. Y.	100
WLOE	Boston, Mass.	250
WMBA	Newport, R. I.	100
WMBJ	Pittsburgh, Pa.	100
WMBQ	Brooklyn, N. Y.	100
WMES	Boston, Mass.	50
WMPC	Lapeer, Mich.	100
WNBK	Binghamton, N. Y.	50
WOPJ	Bristol, Tenn.	100
WPEN	Philadelphia, Pa.	250
WWRL	Woodside, N. Y.	100
KDB	Santa Barbara, Cal.	100
KGDR	San Antonio, Tex.	100
KGFI	Corpus Christi, Tex.	100
KGHI	Little Rock, Ark.	100
KGHX	Richmond, Tex.	50
KGKB	Brownwood, Tex.	100
KPJM	Prescott, Ariz.	100
KUJ	Long View, Wash.	10
KWBS	Portland, Ore.	15
KWTC	Santa Ana, Calif.	100

WHEN IN NEW YORK

RESIDE at the magnificent Apartment Hotel overlooking Central Park, and facing Museum Gardens. Only a few minutes from Broadway, Fifth Avenue and the shopping and theater centers. Dining service unsurpassed. Residential and transient.

Send for illustrated booklet



Standish Hall "A Residential Hotel"

45 W. 81st St. New York
Direction of M. SPARK

John J. Scofield, Manager

RATES

2 Room Suites from \$1600 per year up; 3 Rooms 2 Baths from \$2700 per year up; Larger Suites can be arranged if desired.

TRANSIENT RATES

2 Room Suite from \$6.00 per day
3 Room Suite from \$10.00 per day

Patent Your Ideas

Send me a sketch or simple model of your invention. SATISFACTORY TERMS.

Free Confidential advice. Illustrated Literature.

DO IT NOW!



ZOLTAN H. POLACHEK

REG. PATENT ATTORNEY
CONSULTING ENGINEER

1234 BROADWAY

One-Two-Three-Four Broadway
NEW YORK

The Radio Dial — Inquiry Division

We can get you information, literature, pictures, souvenirs, etc., from one or more sources on any subject, product or entertainer on the air. Nearly every day and always sometime during the week you want news or information regarding some radio feature that you are particularly interested in. Every issue there is published a list of all the new material just released by the sponsors of radio programs. Tell us which of them you want, instead of writing each individually, and we will see that you get them at no cost to you and without delay.

This service is complete. The Inquiry Division, through its intimate relationship with all Broadcasting Stations, can make a store of information usefully available to you for the asking.

CHECK OPPOSITE ITEM WANTED

<i>Title</i>	<i>Courtesy</i>	
Rich Beauty at Low Cost.....	ARMSTRONG CORK COMPANY	<input type="checkbox"/>
Ipana Troubadors' Souvenir	BRISTOL-MYERS CO.	<input type="checkbox"/>
Henry Burbig's latest monologue.....	CECO MFG. CO.	<input type="checkbox"/>
Thompkins' Corners Enterprise	CHESEBROUGH MFG. CO.	<input type="checkbox"/>
Personal Budget Book	CITIES SERVICE CO.	<input type="checkbox"/>
The Wonder Sandwich Book	CONTINENTAL BAKING CO.	<input type="checkbox"/>
Edison's Part in Radio	EDISON, INC., THOMAS A.	<input type="checkbox"/>
How to Safeguard Your Family's Health.....	FRIGIDAIRE-GENERAL MOTORS CORP.	<input type="checkbox"/>
Erectorscope for Boys.....	GILBERT COMPANY, THE A. C.	<input type="checkbox"/>
The Call of the Mountains.....	GREAT NORTHERN RAILWAY	<input type="checkbox"/>
The Empire Builder	GREAT NORTHERN RAILWAY	<input type="checkbox"/>
The Oriental Limited	GREAT NORTHERN RAILWAY	<input type="checkbox"/>
The Scenic Northwest.....	GREAT NORTHERN RAILWAY	<input type="checkbox"/>
Voice of the Air.....	GRIGSBY-GRUNOW CO.	<input type="checkbox"/>
The Old Counsellor Says	HALSEY STUART & CO.	<input type="checkbox"/>
Household Hand Book	JOHNSON & JOHNSON	<input type="checkbox"/>
True-Story Hour Log	MACFADDEN PUBLICATIONS	<input type="checkbox"/>
About the Eveready Hour	NATIONAL CARBON CO.	<input type="checkbox"/>
Radio Home Makers	NATIONAL RADIO HOME-MAKERS' CLUB	<input type="checkbox"/>
Yeast Foamers March	NORTHWESTERN YEAST CO.	<input type="checkbox"/>
Keeping that School Girl Complexion the world over.....	PALMOLIVE CO.	<input type="checkbox"/>
Who's Who in Beauty Culture.....	PALMOLIVE CO.	<input type="checkbox"/>
Palmolive's Surprise	PALMOLIVE CO.	<input type="checkbox"/>
Comfort in Safety	RAYBESTOS CO.	<input type="checkbox"/>
Schrader's Tire Pressure Disc.....	SCHRADER'S SON, INC. A.	<input type="checkbox"/>
The Selby Fashion Observer.....	SELBY SHOE COMPANY	<input type="checkbox"/>
Chimes that cast a spell of Old World Witchery.....	SESSIONS CLOCK CO.	<input type="checkbox"/>
Socony Touring Service—Road Maps of Atlantic States.....	STANDARD OIL CO., OF N. Y.	<input type="checkbox"/>
Recollections—Song Number by Erno Rapée.....	VACUUM OIL COMPANY	<input type="checkbox"/>
The Romance of the Magic Carpet	WHITTALL ASSOCIATES	<input type="checkbox"/>
The Story of Whittall Rugs and Carpets.....	WHITTALL ASSOCIATES	<input type="checkbox"/>

Remarks:

If you want The Radio Dial for one whole year, enclose herewith 50 cents with your dealer's name.

Name

Address

City State

TEAR THIS PAGE OUT AND MAIL TO *The Radio Dial*, Inquiry Division, 101 WEST 42ND ST., N. Y.

HOUSEHOLD PERIODS ON THE AIR

This Issue — *The Radio Household Institute* — N.B.C. Network

ELIZABETH CARTER

IT IS 11:15 in the morning by Eastern Time; 10:15 by Central Time, and alert housewives are getting out pencil and paper, and drawing up a chair, turning on the radio to catch the words, sent to them across hundreds of miles: "This is the Radio Household Institute, broadcasting its regular morning program."

In Minnesota and in Maine, in New Jersey and Missouri—as far as the giant arm of the National Broadcasting Company can reach—in thousands of different homes, thousands of different women who are doing the same thing: listening in! The beds have been made, the house is picked up; there's a lull before it's time to start lunch; and these precious minutes belong to the Radio Household Institute!

That's the picture at one end of the radio—the receiving end. Now what's happening at the other end—in front of the microphone? Well, that's just about the busiest spot in New York, when the Radio Household Institute opens its morning program!

The Institute staff is all lined up, ready for the signal—and they're a keen, alive group of people! There's Miss Carter, a tall brunette, who is standing in front of the microphone, ready to mix up a bowl of satiny mayonnaise or bake a luscious chocolate cake! Miss Byrnes is a golden-haired little blonde. Mrs. Milton is alert and vivacious, and just loves to talk to mothers, because she has a little three-year-old son of her own, at home. Lanky Mr. Thomas has a master touch at the piano, while Mr. Brenton is an adept at taking the part of a typical young husband in the Institute playlets.

There they are, the Radio Household Institute family, ready to open the program! The listeners at the other end don't know what it's going to be, but they're prepared for something awfully good. They've found out that the Institute programs offer a wide variety of interest, and amusement, and information—they're all set to get some *real help* for their home-making problems—and they really get it! They tune in on the Radio Household Institute every morning, because they've found out what waits for them at the other end of the air wave—*service*.

For "service" is the little word which the Radio Household Institute chose for its slogan, when the Institute first went on the air, almost two years ago. And now, when more than 5,000 letters are received in answer to a single program—letters full of enthusiastic approval and appreciation—the Institute staff can't help being happy in the thought that they are really living up to their watchword! And so they stand before the microphone—every one doing his best to please the vast, unseen audience—working hard to put the programs across; to make them alive and interesting and informative, so that every one of the women who are listening in will get some actual help out of every one of the programs.

Sometimes the audience listens to an amusing domestic sketch, between a very human young married couple, facing the everyday problems of all of us. Or perhaps the little drama is laid in a thrilling night club, with music and singing and dancing. The next day, a famous French chef from one of New York's smartest restaurants gives wonderful culinary secrets, to the Institute listeners-in, or a well-known writer talks about entertaining and decorations, or tells worried mothers how to make youngsters drink their milk!



And speaking of celebrities, here is Mr. Louis Cantone's pet recipe for Coconut Layer Cake. Mr. Cantone is the chef of the Hotel Ambassador in New York City, and he has been a guest speaker for the Radio Household Institute several times.

Louis' Coconut Cake

2 cups sifted Swans Down Cake Flour
2 teaspoons Calumet Baking Powder
 $\frac{1}{2}$ teaspoon salt
 $\frac{2}{3}$ cup butter or other shortening
1 cup sugar
3 eggs, unbeaten
 $\frac{1}{3}$ cup milk
1 teaspoon vanilla
1 can ($1\frac{1}{2}$ cups) Baker's Coconut, Southern Style

Sift flour once, measure, add baking powder and salt, and sift together three times. Cream butter thoroughly, add sugar gradually, and cream together until light and fluffy. Add eggs, one at a time, beating well after each addition. Add flour, alternately with milk, a small amount at a time. Beat well after each addition. Add vanilla. Bake in two greased 9-

inch layer pans in moderate oven (375° F) 25 to 30 minutes. Double recipe to make three 10-inch layers. Spread Seven Minute Frosting between layers and on top and sides of cake. Sprinkle each layer and outside of cake thickly with coconut while frosting is still soft.

Lee Ping Quan used to be the steward of the Presidential yacht, "Mayflower." Now he has his own restaurant in New York, and one morning he talked for the Radio Household Institute, and gave the recipe for one of his salad specialties. Here it is:

Grapefruit and Crab Salad

1 cup grapefruit, sections free from membrane and cut in pieces
 $\frac{1}{3}$ cup cucumber, diced
 $\frac{3}{4}$ cup celery, finely cut
 $\frac{1}{2}$ cup Hellmann's Mayonnaise
1 cup crab meat, flaked

Toss ingredients lightly together. Chill. Serve on crisp lettuce. Garnish with additional mayonnaise. Serves 6.

The Radio Household Institute specializes in variety: Domestic drama—talks by famous people—musical programs—home economics—there are a dozen different types of entertainment, but *every program*, no matter how it is presented, deals with some problem of the subject dearest to every woman—her home!

And in addition to the regular morning broadcasts, the Institute maintains a special department of trained writers to prepare bulletins on every conceivable home-making question, while the Institute kitchen is busy every minute originating delicious new recipes and menus.

Service! Definite answers to questions! *Actual help* on running a home, and raising a family, and making one dollar do the work of two! That's what the Radio Household Institute offers to its audience—an audience which has grown, in less than two years, from a few hundred to *many thousand* enthusiastic listeners-in.

Next Issue—*National Radio Home-Makers Club*—Ida Bailey Allen

Broadcasting Stations—United States and Canada

Listed According to Call Letters

S—Where studio location differs from transmitter, same is shown below transmitter location.

WAAF	Chicago, Ill.	WDWF	Cranston, R. I.	WIBA	Madison, Wis.	WLTH	Brooklyn, N. Y.
WAAM	Newark, N. J.	WEAN	S-Providence	WIBG	Elkins Pk., Pa.	WLW	Mason, Ohio
WAAT	Jersey City, N. J.	WDZ	Tuscola, Ill.	WIBM	Jackson, Mich.	S-Cincinnati	
WAAW	Omaha, Neb.	WEAF	Bellmore, N. Y.	WIBO	Desplaines, Ill.	WLWL	Kearny, N. J.
WABC	Queens County S-New York	WEAI	S-New York	WIBR	S-Chicago	S-New York	
WABI	Bangor, Me.	WEAL	Ithaca, N. Y.	WIBS	Steubenville, Ohio	WMAC	Cazenovia, N. Y.
WABO	See WHEC	WEAN	Providence, R. I.	WIBU	Kenilworth, N. J.	WMAF	S. Dartmouth, Mass.
WABZ	New Orleans, La.	WEAO	S-Elizabeth	WIBV	S-Elizabeth	WMAK	Martinsville, N. Y.
WADC	Akron, Ohio	WEAR	Poynette, Wis.	WIBW	Topeka, Kan.	WMAL	S-Buffalo
WAGM	Royal Oak, Mich.	WEBC	Utica, N. Y.	WIBX	Easton, Conn.	WMAN	Washington, D. C.
WAIU	Columbus, Ohio	WEBE	Superior, Wis.	WICC	S-Bridgeport	WMAQ	Columbus, Ohio
WAPI	Birmingham	WEBQ	Cambridge, Ohio	WIL	St. Louis, Mo.	WMAZ	Addison, Ill.
WASH	Grand Rapids, Mich.	WEBR	Harrisburg, Ill.	WILL	St. Louis, Mo.	WMB	St. Louis, Mo.
WBAK	Harrisburg, Pa.	WEBW	Buffalo, N. Y.	WILM	Urbana, Ill.	WMBB	Macom, Ga.
WBAL	Glen Morris, Md. S-Baltimore	WEDC	Beloit, Wis.	WIMR	Wilmington, Del.	WMBD	Newport, R. I.
WBAP	Ft. Worth, Texas	WEDH	Chicago, Ill.	WIOD	Bay Shore, N. Y.	WMBE	Chicago, Ill.
WBAX	Wilkes-Barre, Pa.	WEEL	Erie, Pa.	WIP	Miami Beach, Fla.	WMBF	Detroit, Mich.
WBBC	Brooklyn, N. Y.	WEHS	Weymouth, Mass.	WISN	Philadelphia, Pa.	WMBG	Peoria Heights, Ill.
WBBL	Richmond, Va.	WEIK	Evanston, Ill.	WJAC	Milwaukee, Wis.	WMBH	Richmond, Va.
WBBM	Glenview, Ill. S-Chicago	WELK	Philadelphia, Pa.	WJAD	Johnstown, Pa.	WMBI	Joplin, Mo.
WBBR	Rossville, N. Y.	WEMC	Berrien Sprgs. Mich.	WJAE	Waco, Texas	S-Chicago	
WBBY	Charleston, S. C.	WENR	Chicago, Ill.	WJAF	Norfolk, Neb.	WMBJ	Marion, Ind.
WBBZ	Ponca City, Okla.	WEPS	Gloucester, Mass.	WJAG	Providence, R. I.	S-Pittsburgh	
WBCM	Hampton Twp., Mich. S-Bay City	WEVD	Forest Hills, N. Y.	WJAK	Pittsburgh, Pa.	WMBL	Lakeland, Fla.
WBCN	See WENR	WEW	S-New York	WJAS	Jacksonville, Fla.	WMBQ	Auburn, N. Y.
WBIS	See WNAC	WFAN	St. Louis, Mo.	WJAX	Cleveland, Ohio	WMBR	Brooklyn, N. Y.
WBMS	Fort Lee, N. J.	WFBC	Dallas, Texas	WJAZ	Mt. Prospect, Ill.	WMBT	Tampa, Fla.
WBNY	New York, N. Y.	WFBG	Philadelphia, Pa.	WJBC	S-Chicago	WMC	Memphis, Tenn.
WBOQ	See WABC	WFBH	Knoxville, Tenn.	WJBI	La Salle, Ill.	WMCA	Hoboken, N. J.
WBOV	Terre Haute, Ind.	WFBJ	Altoona, Pa.	WJBK	Red Bank, N. J.	S-New York	
WBRC	Birmingham, Ala.	WFBK	Collegeville, Minn.	WJBL	Ypsilanti, Mich.	WMD	Highland Park, Mich.
WBRE	Wilkes-Barre, Pa.	WFBM	Indianapolis, Ind.	WJBO	Decatur, Ill.	WMES	Boston, Mass.
WBRL	Tilton, N. Hamp.	WFBP	Baltimore, Md.	WJBT	New Orleans, La.	WMFN	Fairmont, W. Va.
WBRS	Babson Park, Mass.	WFBI	Flint, Mich.	WJBU	See WBBM	WMPG	Lapeer, Mich.
WBT	Charlotte, N. C.	WFBJ	Philadelphia, Pa.	WJBV	Lewisburg, Pa.	WMRJ	Jamaica, N. Y.
WBZ	Springfield, Mass.	WFJC	Hopkinsville, Ky.	WJBW	New Orleans, La.	WMSG	New York, N. Y.
WBZA	Boston, Mass.	WFJD	Akron, Ohio	WJBY	Gadsden, Ala.	WMT	Waterloo, Iowa
WCAC	Storrs, Conn.	WFKE	Wissinoming, Pa.	WJDD	Mooseheart, Ill.	WNAC	Quincy, Mass.
WCAD	Canton, N. Y.	WFLA	S-Philadelphia	WJKS	Gary, Ind.	S-Boston	
WCAL	Pittsburgh, Pa.	WFLB	Clearwater, Fla.	WJL	Sylvan Lake, Mich.	WNAD	Norman, Okla.
WCAN	Columbus, Ohio	WGL	Lancaster, Pa.	WJLV	S-Detroit	WNAT	Philadelphia, Pa.
WCAT	Lincoln, Neb.	WGBB	Memphis, Tenn.	WJW	Mt. Vernon Hills, Va.	WNAX	Yankton, S. D.
WCBA	Northfield, Minn.	WGBF	Evansville, Ind.	WJZ	Mansfield, Ohio	WNB	Binghamton, N. Y.
WCAM	Camden, N. J.	WGBI	Scranton, Pa.	WKAQ	Bound Brook, N. J.	WNBH	New Bedford, Mass.
WCAP	Baltimore, Md.	WGBS	Astoria, L. I., N. Y.	WKBQ	S-New York	WNBK	Knoxville, Tenn.
WCAT	Rapid City, S. Dak.	WGCM	S-New York	WKBK	San Juan, P. R.	WNBO	Washington, Pa.
WCAU	Byberry, Pa. S-Philadelphia	WGCP	Gulfport, Miss.	WKBW	East Lansing, Mich.	WNBR	Memphis, Tenn.
WCAZ	Carthage, Ill.	WGCS	Newark, N. J.	WKBX	Laconia, N. H.	WNBV	Carbondale, Pa.
WCBA	Allentown, Pa.	WGHT	Chicago, Ill.	WKBZ	Joliet, Ill.	WNBX	Springfield, Vt.
WCBD	Zion, Ill.	WGHP	Newport News, Va.	WKBZ	Birmingham, Ala.	WNBZ	Saranac Lake, N. Y.
WCBM	Baltimore, Md.	WGL	Fraser, Mich.	WKBZ	Indianapolis, Ind.	WNJ	Newark, N. J.
WCBS	Springfield, Ill.	WGM	S-Detroit	WKBZ	LaCrosse, Wis.	WNOX	Knoxville, Tenn.
WCCO	Anoka, Minn.	WGN	Fort Wayne, Ind.	WKBZ	Chicago, Ill.	WNRC	Greensboro, N. C.
WCDA	S-Minneapolis	WGS	See WLB	WKBZ	Youngstown, Ohio	WNYC	New York, N. Y.
WCFL	Cliffside Park, N. J.	WGT	Elgin, Ill.	WKBZ	Jersey City, N. J.	WQAI	San Antonio, Texas
WCFC	Chicago, Ill.	WGU	Amherst, N. Y.	WKBZ	Battle Creek, Mich.	WQAN	Lawrenceburg, Tenn.
WCGU	Coney Island, N. Y.	WHA	Atlanta, Ga.	WKBZ	New York, N. Y.	WQAX	Trenton, N. J.
WCKY	Villa Madonna, Ky. S-Covington, Ky.	WHB	Schenectady, N. Y.	WKBZ	Galesburg, Ill.	WQBT	Union City, Tenn.
WCLB	Long Beach, N. Y.	WHC	Madison, Wis.	WKBZ	Brookville, Ind.	WQBU	Charleston, W. Va.
WCLO	Kenosha, Wis.	WHD	Milwaukee, Wis.	WKBZ	Amherst, N. Y.	WQD	Davenport, Iowa
WCMA	Joliet, Ill.	WHM	Victor Twp., N. Y.	WKBZ	S-Buffalo	WQDL	Jamestown, N. Y.
WCOA	Culver, Ind.	WHAP	S-Rochester	WKBZ	Ludington, Mich.	WQDA	Paterson, N. J.
WCOB	Pensacola, Fla.	WHAS	Carlstadt, N. J.	WKBZ	Grand Island, N. Y.	WQI	Ames, Iowa
WCOE	Columbus, Miss.	WHB	S-New York	WKBZ	S-Buffalo	WQK	See WMBB
WCOF	Harrisburg, Pa.	WHC	Jeffersontown, Ky.	WKBZ	Lancaster, Pa.	WQO	Mt. Beacon, N. Y.
WCOH	Rock Island, Ill.	WHD	S-Louisville, Ky.	WKBZ	Cincinnati, Ohio	WQP	S-Foughkeepsie
WCRW	Greenville, N. Y.	WHH	Troy, N. Y.	WKBZ	Oklahoma City, Okla.	WQR	Washington, D. C.
WCSH	S-Yonkers	WHI	Kansas City, Mo.	WKBZ	Nashville, Tenn.	WQS	Manitowoc, Wis.
WCSO	Chicago, Ill.	WHJ	Canton, Ohio	WKBZ	Louisville, Ky.	WQT	Furnwood, Mich.
WCST	Portland, Me.	WHK	Bellefontaine, Ohio	WKBZ	Minneapolis, Minn.	WQU	S-Grand Rapids
WCVA	Springfield, Ohio	WHL	Rock Island, Ill.	WKBZ	Muncie, Ind.	WRB	Bristol, Tenn.
WCWB	Tampa, Fla.	WHM	Sheboygan, Wis.	WKBZ	Kansas City, Kas.	WRD	Kansas City, Mo.
WCXC	Kansas City, Mo.	WHN	Memphis, Tenn.	WKBZ	Ettrick, Va.	WRG	Kearny, N. J.
WCYD	Amarillo, Texas	WHO	Anderson Ind.	WKBZ	S-Petersburg	WRH	S-Newark
WCZD	El Paso, Texas	WHP	West De Pere, Wis.	WKBZ	Stevens Point, Wis.	WRM	Auhurn, Mass.
WDAG	Fargo, N. D.	WHQ	Cahmet, Mich.	WKBZ	Oil City, Pa.	WRN	Batavia, Ill.
WDAL	Roanoke, Va.	WHR	Gloucester, Mass.	WKBZ	Long Is. City, N. Y.	WRO	S-Chicago
WDBJ	Orlando, Fla.	WHS	Minneapolis, Minn.	WKBZ	Bangor, Me.	WRS	Jefferson City, Mo.
WDBT	Wilmington, Del.	WHT	Tupper Lake, N. Y.	WKBZ	Ithaca, N. Y.	WRT	Secaucus, N. J.
WDBZ	Minneapolis, Minn.	WHT	Rochester, N. Y.	WKBZ	Lexington, Mass.	WRT	S-New York
WDBT	Chattanooga, Tenn.	WHT	Cicero, Ill.	WKBZ	Lexington, Mass.	WRT	Omaha, Neb.
WDBT	New Haven, Conn.	WHT	Bluefield, W. Va.	WKBZ	See WGN	WRT	Fort Wayne, Ind.
WDBT	New Orleans, La.	WHT	Cleveland, Ohio	WKBZ	Philadelphia, Pa.	WRT	See WQAO
WDBT		WHT	New York, N. Y.	WKBZ	Chelsea, Mass.	WRT	Pawtucket, R. I.
WDBT		WHT	Des Moines, Iowa	WKBZ	S-Boston	WRT	Chicago, Ill.
WDBT		WHT	Lemoyne, Pa.	WKBZ	Crete, Ill.	WRT	Hoboken, N. J.
WDBT		WHT	S-Harrisburg	WKBZ	S-Chicago	WRT	S-New York
WDBT		WHT	Ottumwa, Iowa	WKBZ	See WDFW	WRT	Philadelphia, Pa.

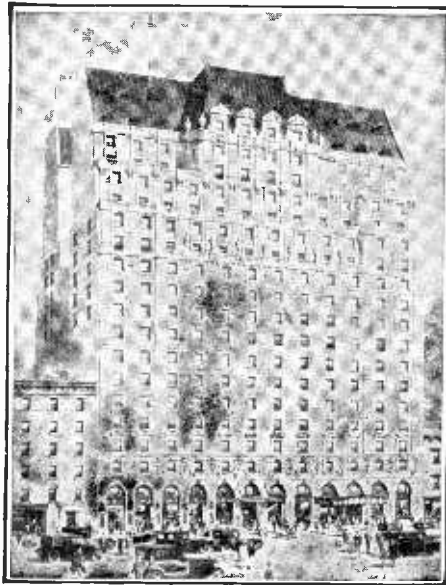
Broadcasting Stations Continued

WPG	Atlantic City, N. J.	KFH	Wichita, Kan.	KGKG	Minot, N. Dak.	KVVO	Tulsa, Okla.
WPOE	Patchogue, N. Y.	KFHA	Gunnison, Colo.	KGKL	San Angelo, Tex.	KVOS	Bellingham, Wash.
WPOR	See WTAR	KFI	Los Angeles, Calif.	KGKO	Wichita Falls, Tex.	KWBS	Portland, Ore.
WPSC	State College, Pa.	KFIF	Portland, Ore.	KGKX	Sandpoint, Idaho	KWCR	Cedar Rapids, Iowa
WPTF	Raleigh, N. C.	KFIO	Spokane, Wash.	KGO	Oakland, Calif.	KWEA	Shreveport, La.
WQAM	Miami, Fla.	KFIZ	Fon du Lac, Wis.	KGRC	San Antonio, Texas	KWG	Stockton, Cal.
WQAN	Scranton, Pa.	KFJB	Marshalltown, Iowa	KGRS	Amarillo, Texas	KWJJ	Portland, Ore.
WQAO	Cliffside, N. J.	KFJF	Oklahoma City, Okla.	KGU	Honolulu, Hawaii	KWK	St. Louis, Mo.
	S—New York	KFJI	Astoria, Ore.	KGW	Portland, Ore.	KWKC	Kansas City, Mo.
WQBC	Uica, Miss.	KFJM	Grand Forks, N. D.	KGY	Lacey, Wash.	KWKH	Kennonwood, La.
WQBZ	Weirton, W. Va.	KFJR	Portland, Ore.	KHJ	Los Angeles, Calif.	KWLC	Decorah, Iowa
WRAF	LaPorte, Ind.	KFJY	Port Dodge, Iowa	KHQ	Spokane, Wash.	KWSC	Pullman, Wash.
WRAC	Erie, Pa.	KFJZ	Ft. Worth, Texas	KICK	Red Oak, Iowa	KWTC	Santa Ana, Cal.
WRAW	Reading, Pa.	KFKA	Greeley, Colo.	KID	Idaho Falls, Idaho	KWWG	Brownsville, Texas
WLAX	Philadelphia, Pa.	KFKB	Millard, Kan.	KIDO	Boise, Idaho	KWYO	Laramie, Wyo.
WRBC	Valparaiso, Ind.	KFKU	Lawrence, Kan.	KIT	Yakima, Wash.	KXA	Seattle, Wash.
WRBI	Tifton, Ga.	KFKX	See KYW	KJBS	San Francisco, Cal.	KXL	Portland, Ore.
WRBJ	Hattiesburg, Miss.	KFKZ	Kirksville, Mo.	KJB	Seattle, Wash.	KXO	El Centro, Cal.
WRBL	Columbus, Ga.	KFLV	Rockford, Ill.	KLCN	Blytheville, Ark.	KXRO	Aberdeen, Wash.
WRBQ	Greenville, Miss.	KFLX	Galveston, Tex.	KLO	Ogden, Utah	KYA	San Francisco, Cal.
WRBT	Wilmington, N. C.	KFMX	Northfield, Minn.	KLRA	Little Rock, Ark.	KYW	Chicago, Ill.
WRBU	Gastonia, N. C.	KFNH	Shenandoah, Iowa	KLN	Oakland, Cal.	KYWA	Chicago, Ill.
WRC	Washington, D. C.	KFOR	Lincoln, Neb.	KLX	Oakland, Cal.	KZM	Hayward, Cal.
WREC	Whitehaven, Tenn.	KFOX	Long Beach, Cal.	KLZ	Dupont, Colo.	CFAC	Calgary, Alta.
	S—Memphis	KFPL	Dublin, Texas	KMA	Shenandoah, Iowa	CFBO	St. John, N. B.
WREN	Lawrence, Kans.	KFPM	Greenville, Texas	KMBC	Independence, Mo.	CFCB	Toronto, Ont.
WRHM	Fridley, Minn.	KFPW	Siloam Springs, Ark.	KMED	Medford, Ore.	CFCF	Montreal, Que.
	S—Minneapolis	KFPY	Spokane, Wash.	KMIC	Inglewood, Cal.	CFCJ	Iroquois Falls, Ont.
WRJN	Racine, Wis.	KFQA	See KMOX	KMJ	Fresno, Cal.	CFCN	Calgary, Alta.
WRK	Hamilton, Ohio	KFQD	Anchorage, Alaska	KMMJ	Clay Center, Neb.	CFCC	Chatham, Ont.
WRNY	Coytesville, N. J.	KFQU	Holy City, Cal.	KMO	Tacoma, Wash.	CFCT	Victoria, B. C.
	S—New York	KFQW	Seattle, Wash.	KMOX	Kirkwood, Mo.	CFCY	Charlottetown, P.E.I.
WRR	Dallas, Texas	KFQZ	Hollywood, Cal.		S—St. Louis	CFJC	Kamloops, B. C.
WRUF	Gainesville, Fla.	KFRC	S—Los Angeles	KMTR	Hollywood, Cal.	CFCL	Prescott, Ont.
WRVA	Richmond, Va.	KFRU	San Francisco, Cal.	KNX	Los Angeles, Cal.	CFNB	Fredericton, N. B.
WSAI	Harrison, Ohio	KFSO	Columbia, Mo.		S—Hollywood	CFQC	Saskatoon, Sask.
	S—Cincinnati	KFSJ	San Diego, Calif.	KOA	Denver, Colo.	CFRB	King, York Co., Ont.
WSAJ	Grove City, Pa.	KFSG	Los Angeles, Cal.	KOAC	Corvallis, Ore.	CFRC	Kingston, Ont.
WSAN	Allentown, Pa.	KFUL	Galveston, Texas	KOB	State College, N. Mex.	CHCA	Calgary, Alta.
WSAR	Fall River, Mass.	KFUM	Colorado Spgs., Colo.	KOCW	Chickasha, Okla.	CHCK	Charlottetown, P.E.I.
WSAZ	Huntington, W. Va.	KFUO	Clayton, Mo.	KOH	Reno, Nevada	CHCS	Hamilton, Ont.
WSB	Atlanta, Ga.	KFUP	Denver, Colo.	KOIL	Council Bluffs, Iowa	CHCT	Red Deer, Alta.
WSBC	Chicago, Ill.	KFYD	Culver City, Calif.	KOIN	Sylvan, Oregon	CHGS	Summerside, P.E.I.
WSBT	South Bend, Ind.	KFYS	Cape Girardeau, Mo.		S—Portland	CHLS	Vancouver, B. C.
WSDA	See WSGH	KFWB	Hollywood, Cal.	KOL	Seattle, Wash.	CHMA	Edmonton, Alta.
WSGH	Brooklyn, N. Y.	KFWC	Ontario, Cal.	KOMO	Seattle, Wash.	CHML	Mount Hamilton, Ont.
WSGP	Savannah, Ga.		S—Pomona, Cal.	KOOS	Marshfield, Ore.	CHNS	Halifax, N. S.
WSIX	Springfield, Tenn.	KFWF	St. Louis, Mo.	KORE	Eugene, Ore.	CHRC	Quebec, Que.
WSM	Nashville, Tenn.	KFWI	San Francisco, Cal.	KOY	Phoenix, Ariz.	CHWG	Pilot Butte, Sask.
WSMB	New Orleans, La.	KFWM	Oakland, Calif.	KPCB	Seattle, Wash.	CHWK	Chilliwack, B. C.
WSMK	Dayton, Ohio	KFXD	Jerome, Idaho	KPCM	Prescott, Ariz.	CHYC	Montreal, Que.
WSOA	Deerfield, Ill.	KFXE	Denver, Colo.	KPLA	Los Angeles, Cal.	CHYD	Toronto, Ont.
	S—Forest Park, Ill.	KFXJ	Edgewater, Colo.	KPO	San Francisco, Cal.	CJBR	Regina, Sask.
WSPD	Toledo, Ohio	KFXR	Oklahoma City, Okla.	KPOF	Denver, Colo.	CJCA	Edmonton, Alta.
WSSH	Boston, Mass.	KFXV	Flagstaff, Ariz.	KPPC	Pasadena, Cal.	CJCB	Sydney, N. S.
WSUI	Iowa City, Iowa	KFYO	Abilene, Tex.	KPQ	Seattle, Wash.	CJCC	Calgary, Alta.
WSUN	See WFLA	KFYR	Bismarck, N. D.	KPRC	Houston, Texas	CJCG	London, Ont.
WSVS	Buffalo, N. Y.	KGA	Spokane, Wash.	KPSN	Pasadena, Cal.	CJCH	Yorkton, Sask.
WSYR	Syracuse, N. Y.	KGAR	Tucson, Ariz.	KPWF	Westminster, Cal.	CJHS	Saskatoon, Sask.
WTAD	Quincy, Ill.	KGB	San Diego, Cal.	KQV	Pittsburgh, Pa.	CJOC	Lethbridge, Alta.
WTAG	Worcester, Mass.	KGBU	Ketchikan, Alaska	KQW	San Jose, Cal.	CJOR	Sea Island, B. C.
WTAM	Cleveland, Ohio	KGBX	St. Joseph, Mo.	KRE	Berkeley, Cal.	CJRM	Moose Jaw, Sask.
WTAT	Fwp. of Washington, Wis.	KGBZ	York, Neb.	KRGV	Harlingen, Tex.	CJRW	Fleming, Sask.
WTBQ	S—Eau Claire; Wis.	KGCA	Decorah, Iowa	KRLD	Dallas, Texas	CJSC	Toronto, Ont.
WTAR	Norfolk, Va.	KGCI	San Antonio, Tex.	KRMD	Shreveport, La.	CKAC	Montreal, Que.
WTAW	College Station, Texas	KGCR	Watertown, S. Dak.	KRSC	Seattle, Wash.	CKCD	Vancouver, B. C.
WTAX	Streator, Ill.	KGCU	Mandan, N. Dak.	KSAC	Manhattan, Kan.	CKCI	Quebec, Que.
WTAZ	Richmond, Va.	KGCX	Vida, Mont.	KSCJ	Sioux City, Iowa	CKCK	Regina, Sask.
WTBO	Cumberland, Md.	KGDA	Dell Rapids, S. Dak.	KSD	St. Louis, Mo.	CKCL	Toronto, Ont.
WTFI	Toccoa Falls, Ga.	KDGE	Fergus Falls, Minn.	KSEI	Pocatello, Idaho	CKCO	Ottawa, Ont.
WTC	Avon, Conn.	KGDM	Stockton, Calif.	KSL	Salt Lake City, Utah	CKCR	Brantford, Ont.
	S—Hartford	KGDR	San Antonio, Tex.	KSMR	Santa Maria, Cal.	CKCV	Quebec, P. Q.
WTMJ	Brookfield, Wis.	KGDY	Oldham, S. D.	KSO	Clarinda, Iowa	CKFC	Vancouver, B. C.
	S—Milwaukee	KGEF	Los Angeles, Calif.	KSOO	Sioux Falls, S. Dak.	CKGW	Bowmanville, Ont.
WTNT	Nashville, Tenn.	KGEK	Yuma, Colo.	KSTP	Westcott, Minn.	CKIC	Wolfville, N. S.
WWAE	Hammond, Ind.	KGER	Long Beach, Calif.		S—St. Paul	CKLC	Red Deer, Alta.
WWJ	Detroit, Mich.	KGEW	Ft. Morgan, Colo.	KTAB	Oakland, Cal.	CKMC	Cobalt, Ont.
WWL	New Orleans, La.	KGEZ	Kalispell, Mont.	KTAP	San Antonio, Tex.	CKMO	Vancouver, B. C.
WWNC	Asheville, N. C.	KGFF	Alva, Okla.	KTAT	Fort Worth, Tex.	CKNC	Toronto, Ont.
WRRL	Woodside, N. Y.	KGFG	Oklahoma City, Okla.	KTBI	Los Angeles, Cal.	CKOC	Hamilton, Ont.
WWVA	Wheeling, West Va.	KGFI	Corpus Christi, Tex.	KTBR	Portland, Ore.	CKOW	Toronto, Ont.
KCRC	Enid, Okla.	KGFL	Los Angeles, Calif.	KTBS	Shreveport, La.	CKPC	Preston, Ont.
KDB	Santa Barbara, Cal.	KGFK	Hallock, Minn.	KTHS	Hot Springs, Ark.	KKPR	Midland, Ont.
KDKA	Saxonburg, Pa.	KGFL	Raton, N. Mex.	KTM	Santa Monica, Cal.	KKSH	St. Hyacinthe, P. Q.
	S—Pittsburgh	KGFW	Ravenna, N. Mex.	KTNT	Muscatine, Iowa	KKUA	Edmonton, Alta.
KDLR	Devils Lake, N. D.	KGFX	Pierre, S. Dak.	KTSA	San Antonio, Texas	CKWX	Vancouver, B. C.
KDYL	Salt Lake City, Utah	KGGC	San Francisco, Cal.	KTSL	Cedar Grove, La.	CKX	Brandon, Man.
KEJK	Beverly Hills, Calif.	KGGF	Picher, Okla.		S—Shreveport	CKY	Winnipeg, Man.
KEW	Burbank, Calif.	KGGM	Albuquerque, N. M.	KTSM	El Paso, Tex.	CNRA	Moncton, N. B.
KEX	Portland, Ore.	KGGH	Pueblo, Colo.	KTUE	Houston, Texas	CNRC	Calgary, Alta.
KFAB	Lincoln, Neb.	KGGI	McGeehee, Ark.	KTW	Seattle, Wash.	CNRE	Edmonton, Alta.
KFAD	Phoenix, Ariz.	KGGJ	Little Rock, Ark.	KUJ	Longview, Wash.	CNRL	London, Ont.
KFBB	Havre, Mont.	KGGK	Billings, Mont.	KUOA	Fayetteville, Ark.	CNRM	Montreal, P. Q.
KFBK	Sacramento, Cal.	KGGH	Richmond, Texas	KUOM	Missoula, Mont.	CNRO	Ottawa, Ont.
KFBL	Everett, Wash.	KGIQ	Twin Falls, Idaho	KUSD	Vermillion, S. Dak.	CNRQ	Quebec, P. Q.
KFDM	Beaumont, Tex.	KGIR	Butte, Mont.	KUT	Austin, Texas	CNRU	Regina, Sask.
KFDY	Brookings, S. D.	KGIW	Trinidad, Colo.		Des Moines, Wash.	CNRS	Saskatoon, Sask.
KFEL	Denver, Colo.	KGIX	Las Vegas, Nev.	KVI	S—Tacoma, Wash.	CNRT	Toronto, Ont.
KFEQ	St. Joseph, Mo.	KGJF	Little Rock, Ark.	KVL	Seattle, Wash.	CNRV	Vancouver, B. C.
KFGQ	Boone, Iowa	KGKB	Brownwood, Tex.	KVOA	Tucson, Ariz.	CNRW	Winnipeg, Man.

The
NEW and BEAUTIFUL
PARAMOUNT HOTEL

46th St. just West of Broadway
New York City

A
Hotel Home
of
ELEGANCE
BEAUTY
and
COMFORT



700
ROOMS
each with BATH

Circulating
Iced Water
In Every Room

SINGLE
\$3.50, \$4.00, \$5.00

DOUBLE
\$5.00, \$6.00, \$7.00

Home of the World's
MOST LUXURIOUS GRILL

[Healthful, Cool, Refreshing Atmosphere of Manufactured Weather]

"One of the most exquisite, if not breath-taking, dining and dancing retreats seen in this town in a number of years is the grill room of this hotel. How to begin a description of this lovely room is rather difficult, and to say it is very beautiful is rather a feeble attempt."

—*Eve. Post*, July 3rd, 1928

LUNCHEON—DINNER—SUPPER

Dancing during Luncheon and continuously from 6:30 P.M. to closing

DE LUXE ENTERTAINMENT

Cover charge daily and Sunday \$1.00
Saturdays and holidays \$2.00 } only after 10:30 P.M.

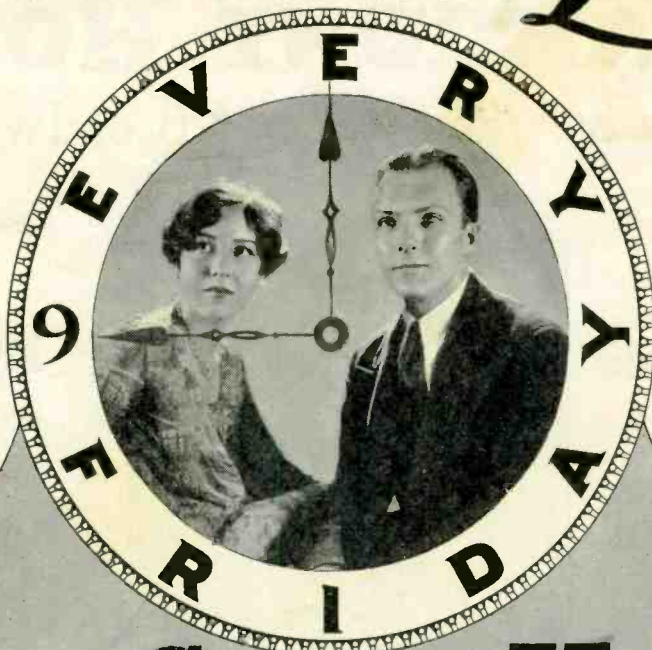
ROY INGRAHAM and his
PARAMOUNT HOTEL ORCHESTRA

A. LINCOLN SCOTT, Managing Director

CHickering 7586

Tune in on Life!

First
Presentation
9 P.M.
Eastern
Time



Second
Presentation
9 P.M.
Pacific
Time

True Story Hour

Makes You Glad You Own a Radio Set!
Symphonic and Vocal Music—Absorbing Travelogue
A DRAMATIZED TRUE STORY

Tune In on Any of These Forty-Two Stations

East and West Chain

WABC—New York
WEAN—Providence
WNAC—Boston
WFBL—Syracuse
WMAK—Buffalo
WCAU—Philadelphia
WLBW—Oil City

WJAS—Pittsburgh
WOWO—Fort Wayne
WMAL—Washington, D. C.
WADC—Akron
KOIL—Council Bluffs
WHEC—Rochester
WCCO—Minneapolis
WHK—Cleveland

WGHP—Detroit
WMAQ—Chicago
KMOX—St. Louis
WCAO—Baltimore
KMBC—Kansas City
WSPD—Toledo
WKRC—Cincinnati

Southern Chain

WWNC—Asheville
WBRC—Birmingham
WLAC—Nashville
KLRA—Little Rock

WTAR—Norfolk
WDOD—Chattanooga
WDSU—New Orleans
KFJF—Oklahoma City
KFH—Wichita

WDBJ—Roanoke
WREC—Memphis
KRLD—Dallas
KTSA—San Antonio

West Coast Chain

KLZ—Denver
KFRC—San Francisco

KDYL—Salt Lake City
KFPY—Spokane
KVI—Seattle

KHJ—Los Angeles
KOIN—Portland

EVERY FRIDAY NIGHT