

Souvenir
and
Log Book

“K-TNT”
MUSCATINE, IOWA

“America’s Most Beautiful Radio Station”

Price
25c

5000 Watts
1170 Kc. — 256.3 Meters

George - Frank - Pie - Owens

"K-TNT" Programs

SUNDAY—Sacred Concert12 to 12:30 Noon
 Sermon—(Each Sunday we try to have a minister from a different church, and all ministers, regardless of denomination, are invited).....12:30 to 1 P. M.

(The following subject to change from time to time)

All weekday programs the same, as follows:

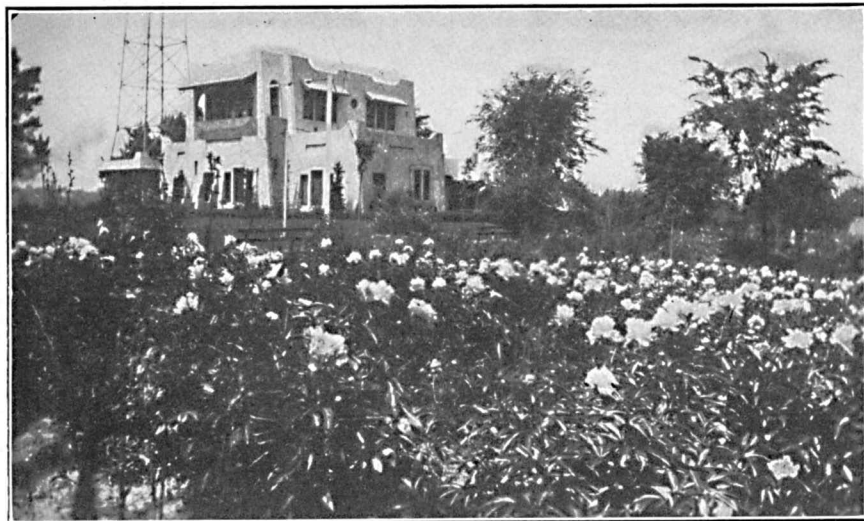
MONDAY	6:00 to 6:30 A. M.	Musical
TUESDAY	6:30 to 7:00 A. M.	Religious, Musical
WEDNESDAY	7:00 to 9:00 A. M.	Variety and Musical
THURSDAY	9:00 to 10:00 A. M.	News, Markets, Farm Flashes, Musical
FRIDAY	10:00 to 11:00 A. M.	Cook Book
SATURDAY	11:00 to 12:00 Noon	SILENT
	12:00 to 1:30 P. M.	Norman Baker (Himself)
	1:30 to 2:00 P. M.	Musical
	2:00 to 3:00 P. M.	Mailbag
	3:00 to 4:00 P. M.	Variety
	4:00 to 5:00 P. M.	Frolics

The Federal Radio Commission Ruled Against Us, and Deprived Us of Evening Hours,
 Thus Ruining Our Station: The Most Popular in America, Judging By the Record
 Breaking Crowds That Visit Us.

“K-TNT”

Muscatine, Iowa

Started
Construction
1924



First
Program
1925

“K-TNT” Studio, showing part of 10,000 Peonies in bloom

5000 Watts

Norman Baker,
Owner-Operator

Owner and Operator of "K-TNT"

THIS was always Mr. Baker's favorite picture on account of the "freakish" streak of gray hair, with a dividing line between the gray and dark hair, directly in the center.

His many enterprises are always open to the public. Visitors always welcome at the

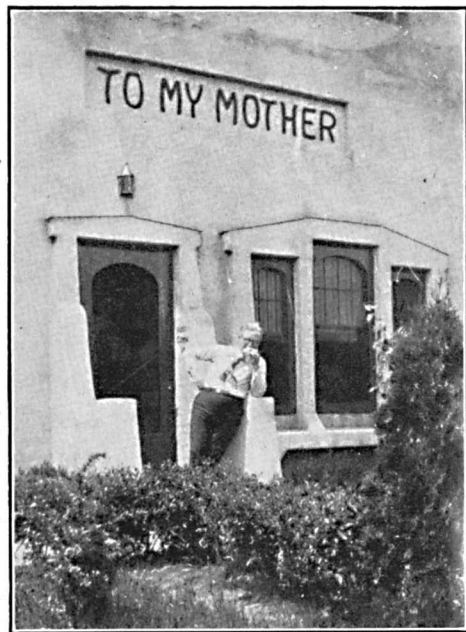
"K-TNT" Station
"K-TNT" Retail Store
"K-TNT" Cafe
"K-TNT" Oil Station
"K-TNT" Mail Order
Office
Calliophone Factory
Tire and Radio Dept.



NORMAN BAKER (as was in 1924)
"He's gray-haired now"

MR. BAKER was born in Muscatine, Iowa, Nov. 27, 1882. He left home at age of 19, spending many years in the amusement business.

Returned to Muscatine in 1914 and started to manufacture air calliopes. In 1920 fire completely ruined his factory, leaving him practically penniless. Started mail order art school 1920, gradually working back into the manufacture of the Calliophone, his own musical invention of which over \$1,000,000.00 worth is now in use in all parts of the world.



In this "snap", a visitor caught
Mr. Baker eating lunch.

A Monument To My Mother

"A Wonderful Woman—*like your Mother*"

Dedicated To—

THE FARMER

THE LABORER

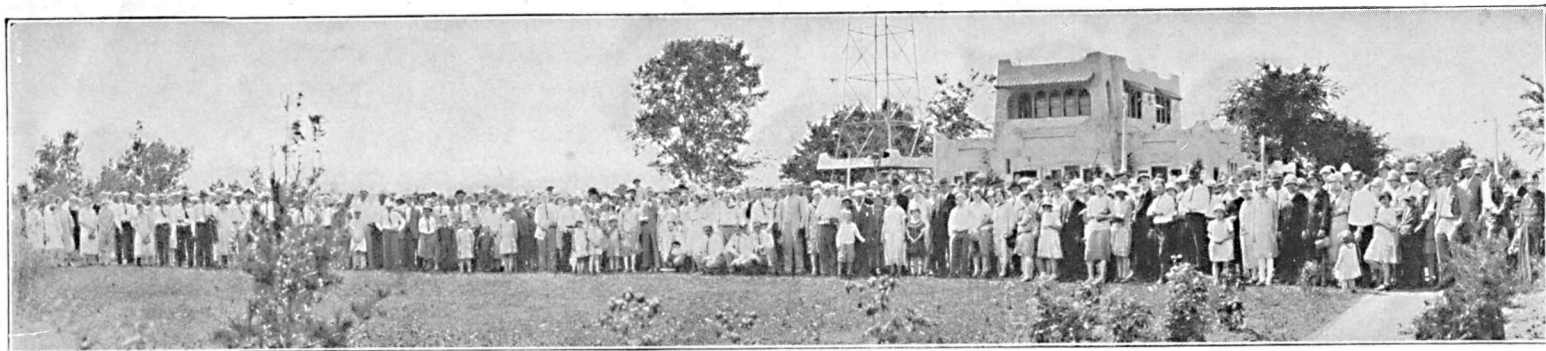
THE COMMON FOLKS

Here's The "K-TNT" Smile—It Won't Come Off



FONDA, "The Girl Who Sings to Beat the Calliaphone"

*G*T'S Miss Fonda Jarvis, whose pleasing voice has entertained thousands and who perhaps has greeted more people with a smile; as reception girl, than any Radio girl in America. If you see her without a smile; simply shout: "Smile, Darn you, Smile."



A USUAL SUNDAY CROWD AT "K-TNT"



MISS GARRETT
Calliaphonist and Pianist,
also announcer.

"K-TNT" holds the record for the largest number of visitors of any Radio Station on the North American Continent, and perhaps this record has not been broken by any station in the world.

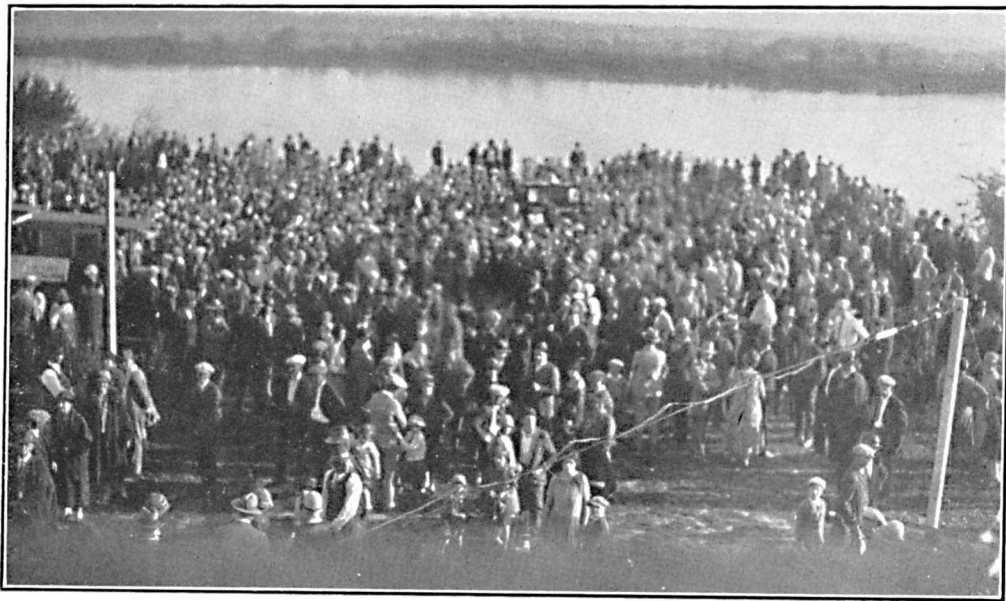
Over 135,000 visitors in 15
Sundays and two holidays
in 1927.

Over 25,000 visitors on
Labor Day, 1928.

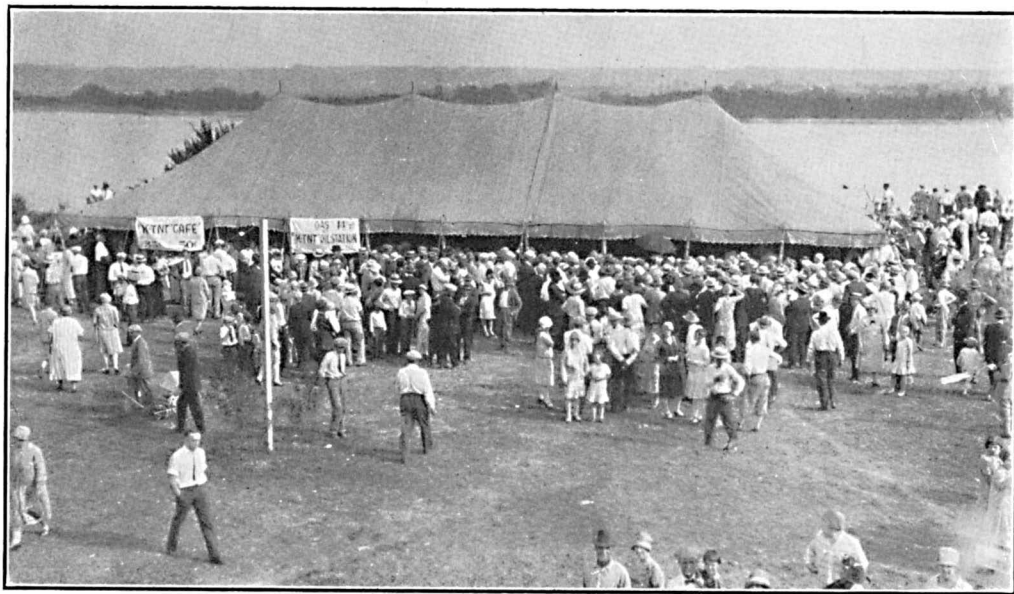
Over 18,000 visitors on
Mother's Day, 1928.



MR. JACOBS
and his "Radio Violin."



A SUNDAY crowd on the lawn, over 10,000 visitors on this day. Lots of fun—everybody happy. So much sun, we had to put up a tent as shown opposite.



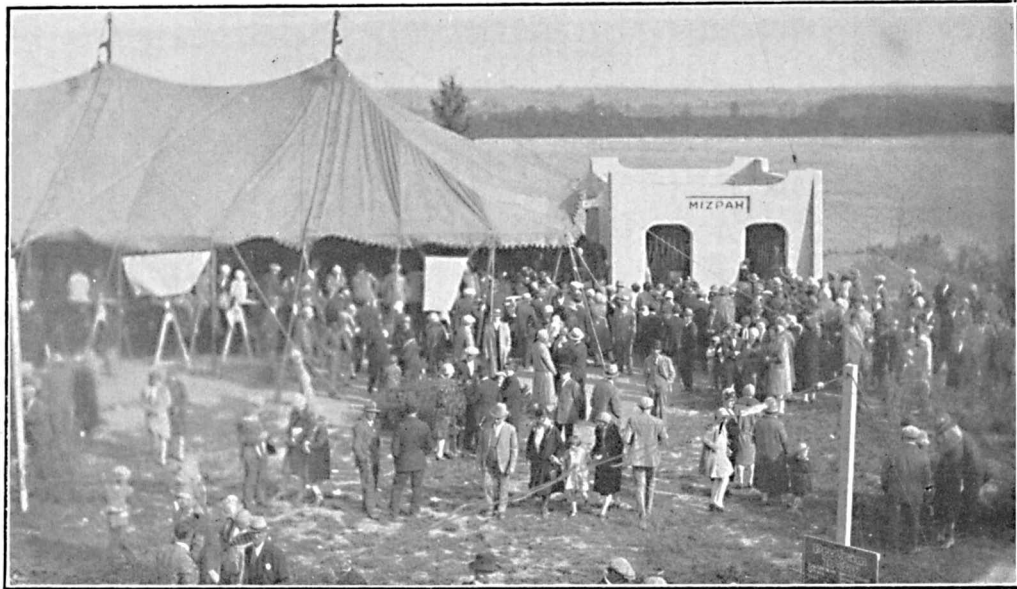
THE tent filled and thousands unable to secure seats, while programs are broadcast from stage in tent, which afforded shade and protection from rain. One day a storm came along, and the results are shown on next page.



ONE night, without warning a windstorm dropped in to see us, and "goodbye tent, seats and all." We were ready to broadcast by the following Sunday however. Tired of the tent studio, we built the permanent lawn studio shown opposite.



1500 "K-TNT" visitors seated in tent. Note loud speakers on pole, which afford perfect tones to every part of audience, Robert Finley is singing.

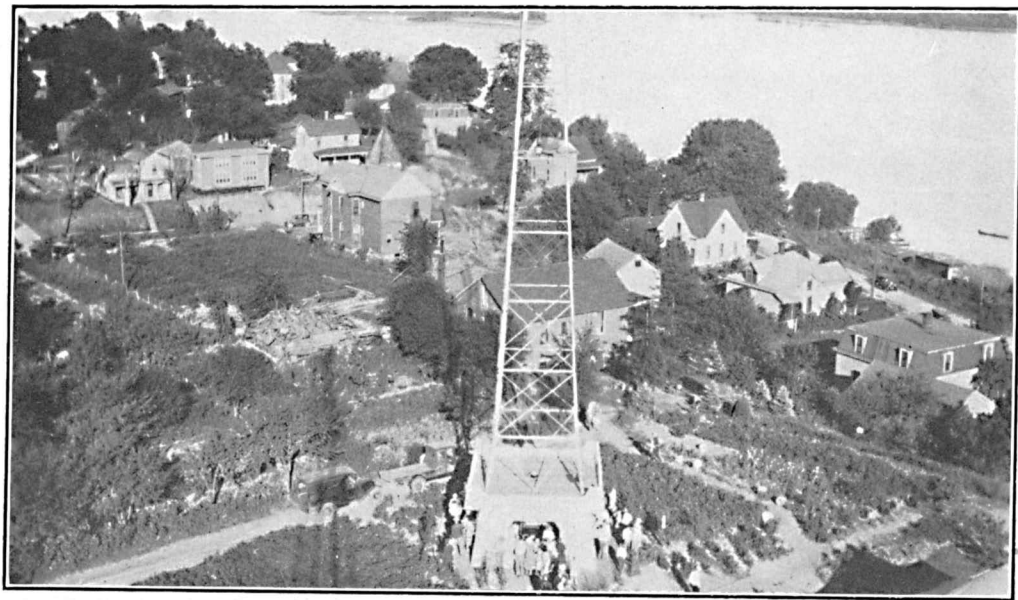


To accommodate the large crowds this Lawn Studio was built and during summer. all programs are broadcast from it. One side is open and faces a large tent that affords seating capacity for 1500 people.

Over 25,000 Visitors Labor Day.



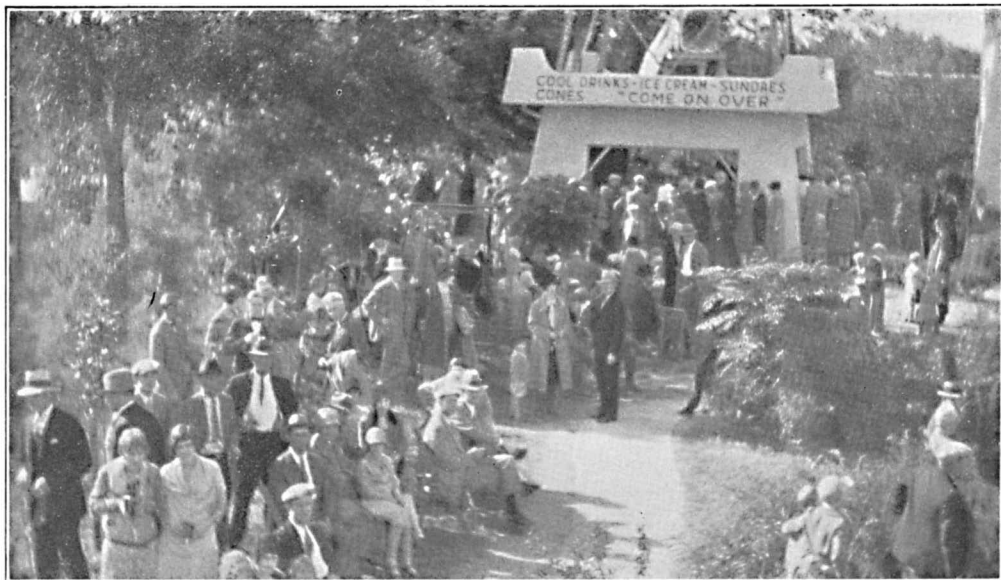
LABOR DAY, 1928. Over 25,000 visitors on this day. Shows part of crowd on hillside. On this day it was impossible to find parking space within three-quarters of a mile of the station.



A VIEW from the West Radio Tower looking East. Note merchandise booth in base of tower and the large Peony and Oriental Poppy Gardens. Over 20,000 Peonies and thousands of Poppies were in bloom. The Mississippi river in background.



MOONLIGHT ON THE MISSISSIPPI AT "K-TNT"

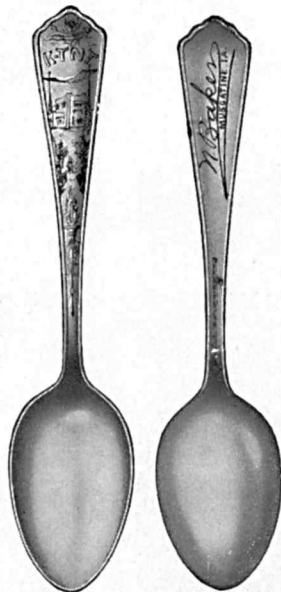


*L*ABOR DAY, 1928. Thousands of bottles of refreshments and thousands of ice cream cones were necessary to satisfy the crowds. Shows the refreshment stand built under tower; with 5 mile loud speaker on top.



EVENING AT "K-TNT" — LOOKING OVER THE MISSISSIPPI

"K-TNT" SPOONS



**25 yr.
Guar-
antee**

You will marvel at the Jewelers skill in reproducing such a true reproduction of "K-TNT" on the spoons, and on the reverse side is an actual signature of Baker. Solid nickel silver, no cheap plate, will last a lifetime. Makes a fine set for your table. One weighs 4 oz. Set of six weighs 1 lb.

Each 45c

Set of 6 \$2.25

CANE PENCILS

Fine souvenir for the Kids. Long 16 inch Cane pencil, with leather "K-TNT" burnt motto. Weight, 4 oz. Only

20c

**"K-TNT"
Souvenirs**



It's beautiful. I believe it's the prettiest Pennant ever made on felt. About 30 inches long, 9 inches high, with reproduction of "K-TNT" studio and hill, in oil colors. Made of fine grade felt. Colors: Red, Blue, Green, Brown, Purple and Yellow. Weight, 3 oz. Postage 5c. Price

25c

Postage 5c

"K-TNT" Oriental Perfume

Here's a perfume that is absolutely different from all others. It's original "Oriental". Use a perfume that's different. Your friends will appreciate the wonderful odor. Wt. 3 oz. Regular 75c bottle. Special sale price **49c**

SOUVENIR LAMPS

Beautiful glass, tinted Dresser, table, or Art Piece Novelty electric Lamp, with connecting cord ready to attach, with decorated globe. Weight, 3 lbs. Every lady will appreciate one or two. Price only **\$1.48**

Cigarette Case

All leather cigarette case with flap. Picture "K-TNT" burnt in. Holds package. Weight, 4 oz. Every man will appreciate it.

49c

"K-TNT" Miniature Dictionary

A real useful novelty. Leather bound, small miniature Dictionary, about 1½ in. x 1 in. x 1 in. thick. Hundreds of pages Plainly printed. Fits a purse. **48c** Weight, 3 oz. Only

Wood Novelty Souvenirs

All kinds of Wooden Art Novelty pieces—Banks, "Good Luck Horseshoe", Matrimonial Bottle, Indian Cups, Sewing thread-Pin Holder, Ink Wells, Ash Trays and many others. Send for an assortment. Each weighs about 7 oz. 6 weigh 2½ lbs.

Each 25c

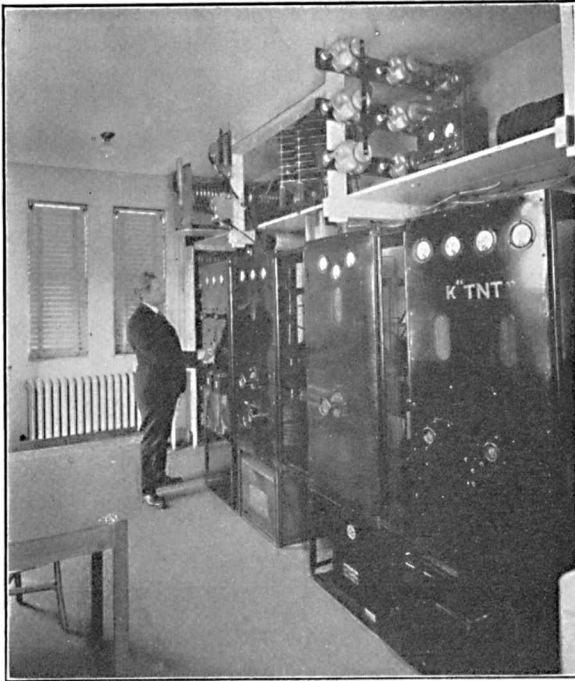
6 for \$1.40

Men's "K-TNT" Wallets

All leather Billfold with stamp, card and coin pockets. Beautiful picture of "K-TNT" burnt in. Best pure leather, weigh 4 oz. Only **79c**

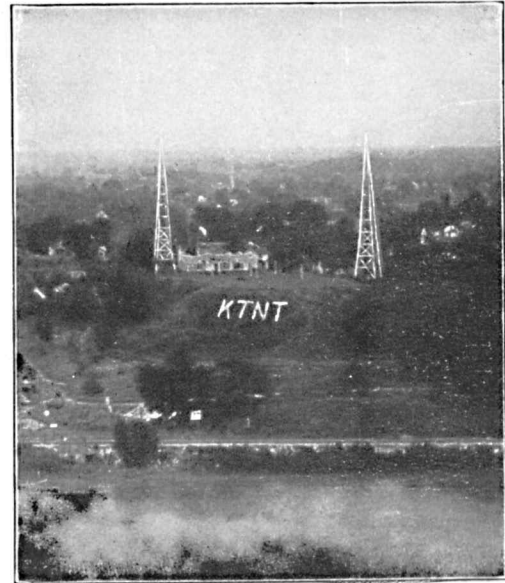
"K-TNT" Address Books

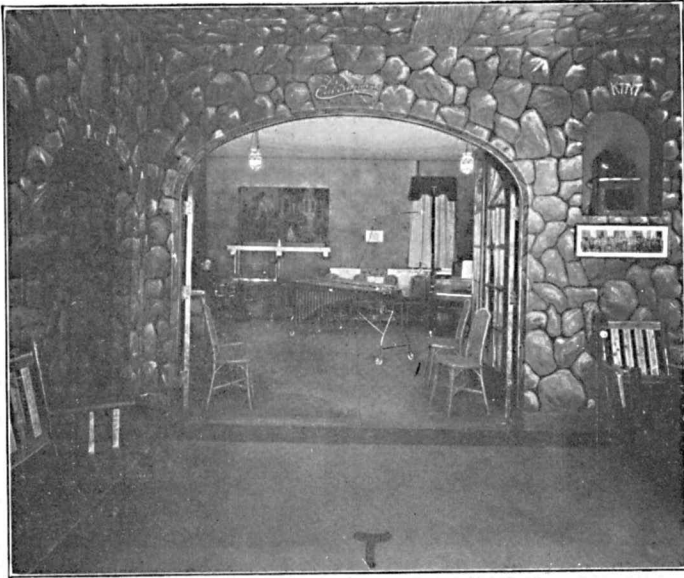
A very useful article. A small leather bound Address Book with alphabet index, size about 3 in. x 2 in., weight 2 oz. Everyone needs one for addresses or notes. Very suitable for keeping track of your Beaus. Has "K-TNT" burnt in same. **25c**



*T*HE first 1000 watt transmitter used in 1925-26. Now used as an emergency transmitter, having been replaced by a new 14,700 watt transmitter.

*A*N airplane view showing studio, 165 feet above the waters of the Mississippi. Taken before the second story was built onto studio.

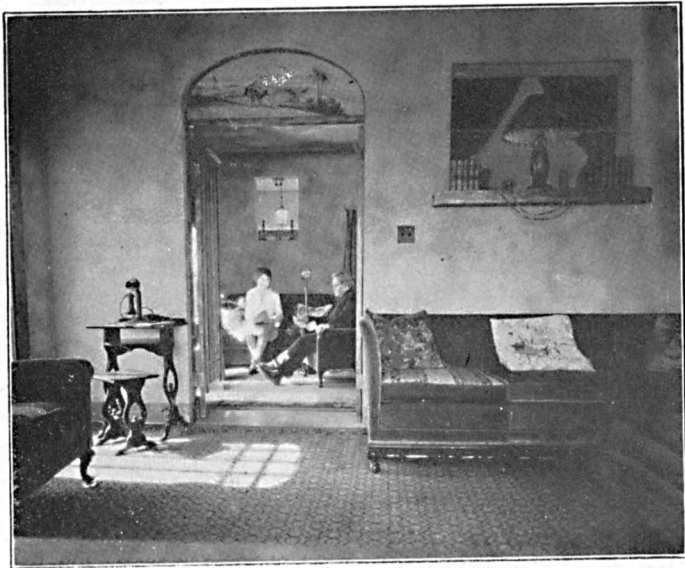




*L*OOKING into the Main Broadcasting Studio, from Reception Room.

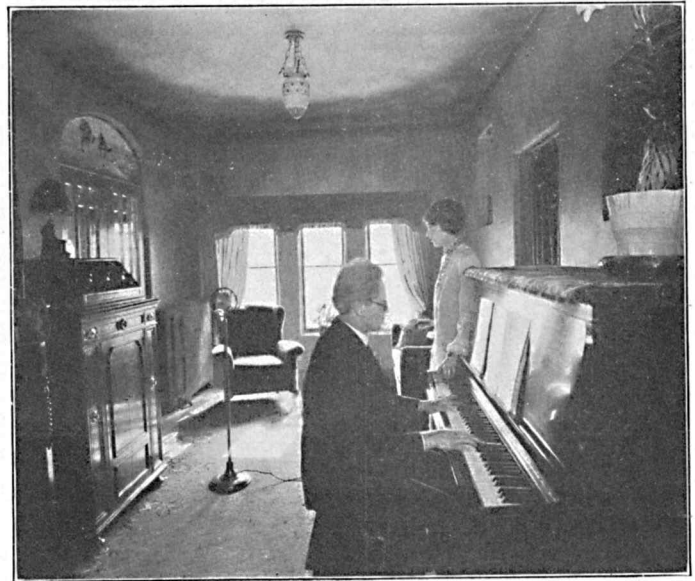
*M*AIN broadcasting studio No. 1, the only studio in the world using a Calliaphone, as shown at right.

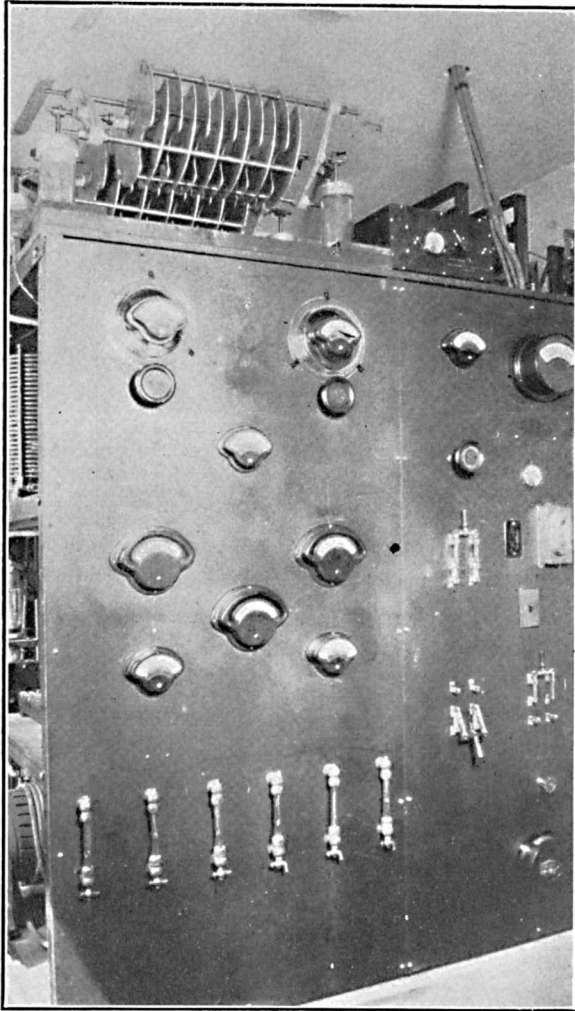




LOOKING into No. 2 Studio
from Artist's private room.

No. 2 Studio, used mostly
for Soloists.





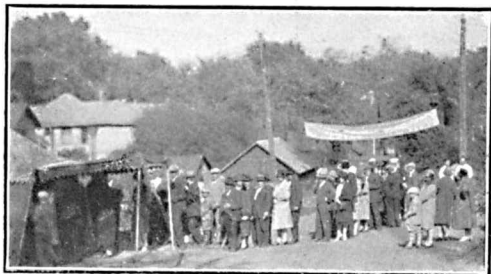
THE new 14,700 watt transmitter. Built in Mr. Baker's factory, and considered unusually efficient. Listeners in Central America, Hawaii, and other foreign countries have heard it. MacMillan Expedition in the Arctic advises "K-TNT" was the only American station they could receive during one evening.



A FEATURE of "K-TNT" programs, is Mr. Baker's Monday night talks from 8 to 9 p. m. This picture shows him in his private room, dictating his talk to a dictating machine, at the same time talking into the microphone. All talks are given extemporaneously.

*L*OOKING into Broadcasting Studio No. 2, from main studio. Beautiful oil paintings are framed into the walls.





Hundreds in line, registering for catalogues. A usual Sunday occurrence.

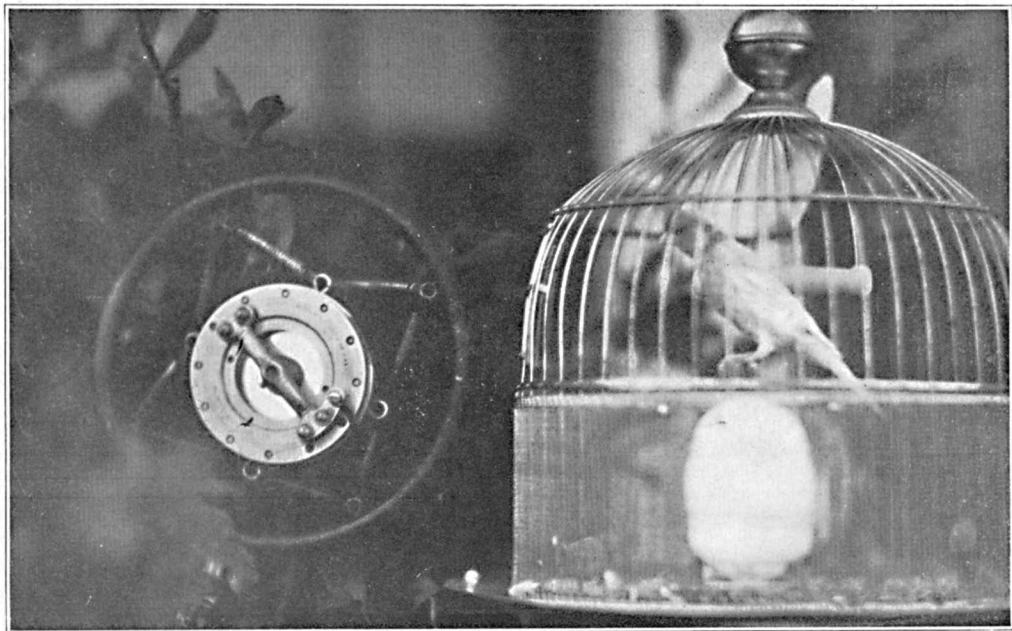
*Fill Up Your Baskets—
Come Spend the Day*



The steps leading to picnic grounds.



Enjoying a picnic dinner at "K-TNT"



"*J*IM" the canary, that made "K-TNT" known as the canary station. He is always at the microphone, and sings whenever he pleases. Regardless of who is performing. Jim always chirps in. We sell these wonderful singers.

The Highest Powered Merchandise Selling

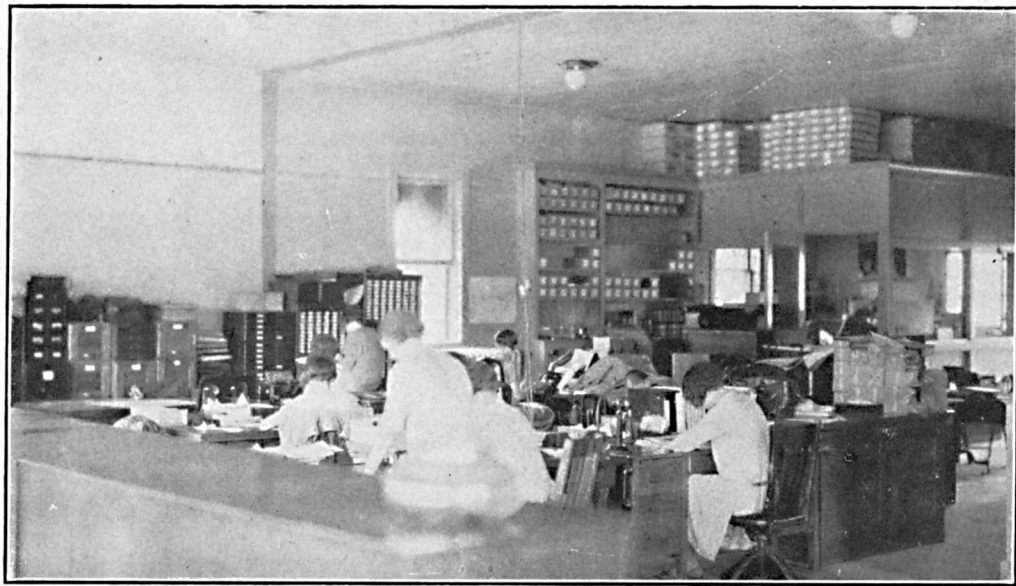


A CORNER OF MAIN OFFICE OF THE BAKER "K-TNT" ENTERPRISES

"K-TNT" was dedicated to the farmer, laborer and common folks and quickly became a "Homefolks station". Thousands soon requested information as to the best and cheapest places to buy various articles which required that we gather information on various articles. With a bulk of information at hand, we have our fingers on the world's best markets.

"K-TNT" Has Saved its Listeners Hundreds

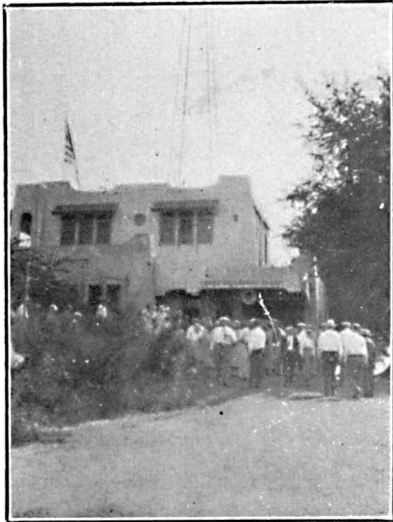
Radio Station in America ---1928.



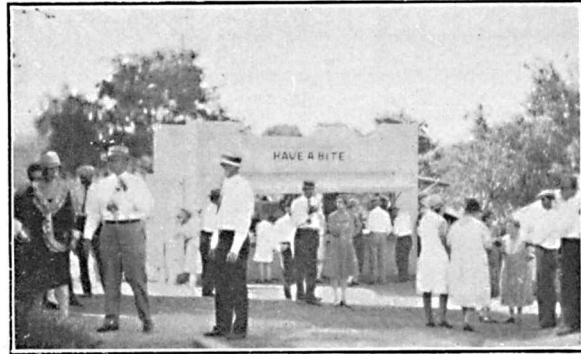
ANOTHER OF THE BAKER—"K-TNT" OFFICES

We realized the large profits between the manufacturer and consumer, and commenced to sell various articles over the air at greatly reduced prices. This brought a rush of orders, which have grown into hundreds of thousands. We figure our prices save our listeners fully $33\frac{1}{3}\%$. Catalogue is free. Send for your copy now, and patronize your favorite station that tries to entertain you.

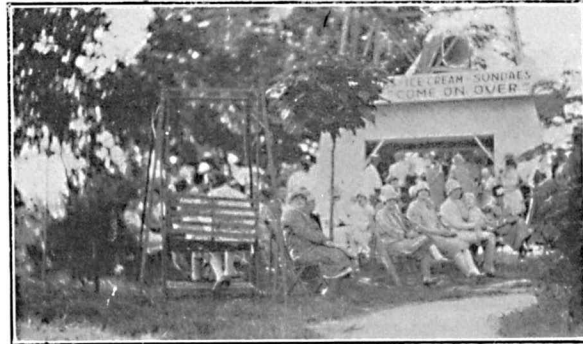
of Thousands of Dollars by Lower Prices



Entering the grounds at "K-TNT". At night this entrance is flooded with 1500 watt red lights.



The "Have a Bite" stand where thousands of hot dogs are served, also the famous Baker's Mellow Ripened Coffee.



The Refreshment stand where as high as seven truck loads of refreshments are sold in one day.

The Marvel "Tangley Master 5" Radio Set
That Astonished Thousands of Our Visitors
At "K-TNT" — Read! Read! Read!



THOUSANDS of visitors who owned radio sets, were astonished at the marvelous action of this set. Many with high priced sets running into hundreds of dollars were not able to tune out their local station and bring in distant stations.

This set was demonstrated inside the main studio building while "K-TNT" was on the air with 5000 watts power, and outside stations were tuned in.

The wonderful selectivity astonished thousands and thousands of sets have been sold at extremely low prices of $\frac{1}{2}$ lower than others. Send for catalogue. Biggest radio bargain in America.

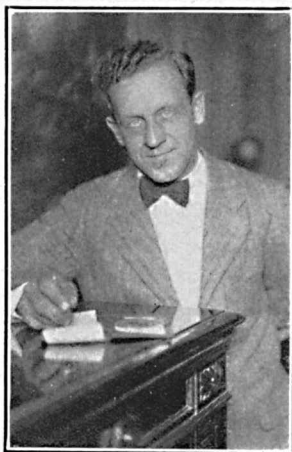


"Baker's All-Electric 6" is Also Priced $\frac{1}{2}$ Lower



ROBERT FINLEY

*A*S he appears before the microphone in his singing and guitar numbers. Robert is totally blind, but always happy.



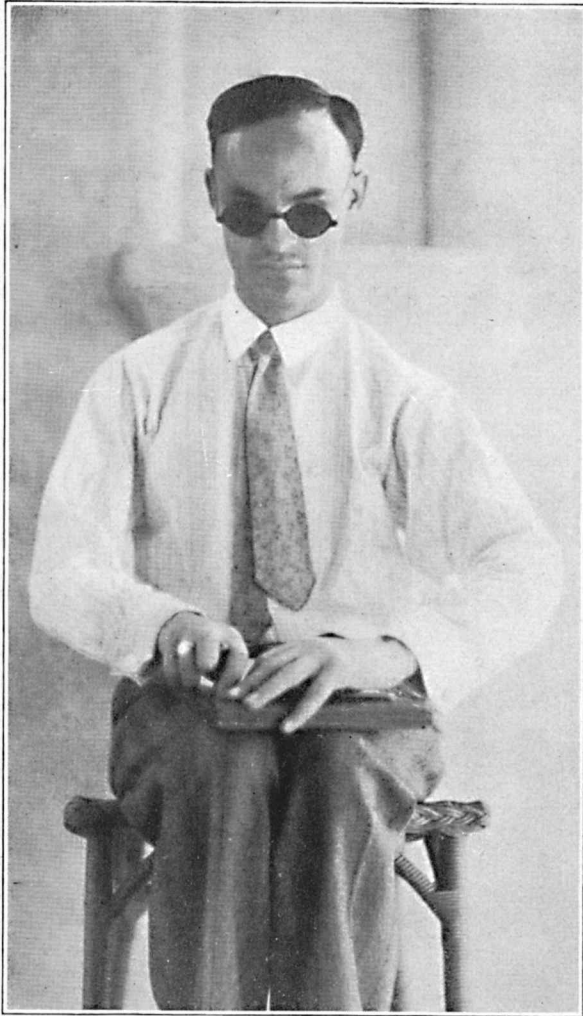
WALTER MOHNSEN

Musical Director

Walter's antics generally put "pep" in his programs.

*F*ONDA, reading the programs to Robert Finley, our blind soloist.





ROBERT FINLEY—Blind Soloist

*R*OBERT is cutting new music on his "slate". A devise he uses for embossing the sheets, from which he reads by the touch of his fingers.



*R*OBERT, our blind soloist may be blind, but our photographer isn't. It's nearbeer.

ENGINEER



AL. WEINER

*A*LWAYS passing the buck, when something goes wrong. Holding a 5,000 watt tube.



PHIL HOFFMAN

*T*RAFFIC manager, also announcer. Phil plays the "Sax" whenever he can borrow one.



ROBERT FINLEY

STANLEY BAKER

As they appear before the Microphone in their duets.

Bob has the smile that never comes off. Even though he has been blind since birth.

Stanley is so serious; we guess it's his girl that's worrying him.



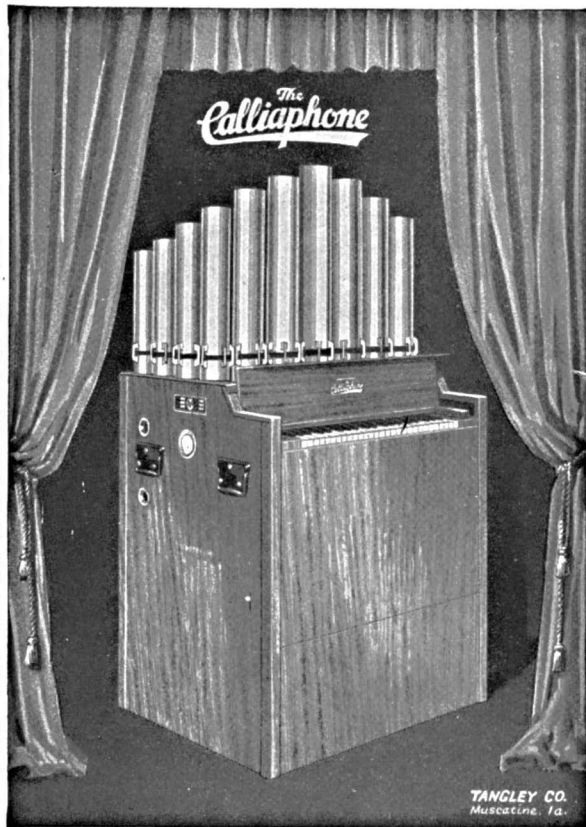
MABEL ALBERS

SECRETARY, of the
Baker Enterprises, also
announcer.

"Daffy"

ONE of the first entertainers at
"K-TNT". When himself, he is
Charles Salisbury, Manager of the Calli-
phone and Radio Departments. One of
the "Daffy-dills."





The Only Station Broadcasting

The Calliaphone
THE CALLIAPHONE

THE CALLIAPHONE was invented and is manufactured by Norman Baker. Over \$1,000,000 worth is now in use by amusement managers.

It is known as the first new toned instrument that has been on the market in 40 years.

K-TNT is the only station that broadcasts a Calliaphone program, hence the name, "Calliaphone Studio K-TNT." It plays automatically or can be hand played. Used in homes, theatres, parks and all amusement places to replace the pipe-organ and for advertising. Models are built with loud or soft volume for inside or outside use, such as theatres, homes, lodges, funeral homes, etc.

Can be used as an accompaniment with voice or any instrument, the same as a piano can be used.

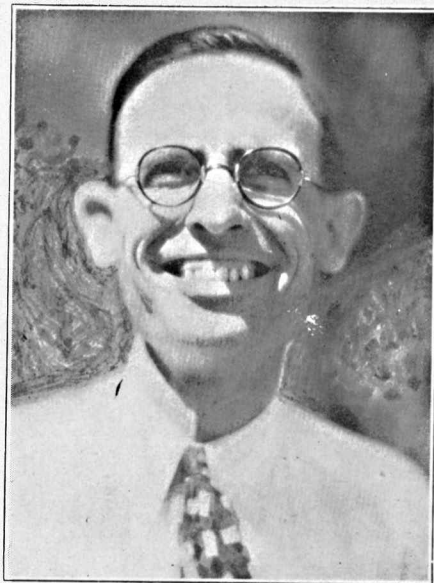
EARN \$45.00 OR MORE

If you know of a prospective customer, send name to Tangley Co., Muscatine, Iowa and if they make a sale, they will pay you 5%, which averages about \$45.00.



STANLEY BAKER

*J*UST a young "buck" who entertains with his Hawaiian guitar. Single, age 20, and full of "pep". He's a nephew of the Boss.



R. H. BELLOWS

*C*OOK Book Announcer and Superintendent of the Baker Enterprises.

Things Not To Do If You Want Good Reception

- DON'T use cheap insulators for your aerial. They are unsafe.
- DON'T annoy your neighbors if you have a regenerative set—keep below oscillating point and enjoy a better quality of reception.
- DON'T spill battery acid on clothes or fabric of any kind for it will eat holes in them. Keep acid away from set wires and prevent corrosion.
- DON'T place a B battery where it will be overheated or affected by moisture.
- DON'T stand a B battery on its side, instead of top up. If you do, the electrolyte will ooze out and make contact with the cells, causing a short circuit.
- DON'T connect your ground wire with a hot pipe. Noises might result.
- DON'T connect your ground wire with a pipe that goes into the earth to a depth of less than 6 feet.
- DON'T place a tube in any but a vertical position. If a tube is placed horizontally, the heated filament may sag and touch the grid, making the tube useless.
- DON'T lay your set down with a jar or permit the cover of the set to slam. Fine adjustments in the set or in the tubes might be disturbed so as to impair your reception.
- DON'T permit the water in the cells of a storage B battery to fall below the plates. When evaporation has brought the water below plate level, replenish with distilled water. Be sure that there is always a layer of about $\frac{1}{8}$ " or $\frac{3}{16}$ " of pure mineral oil at the top of each cell to protect from dust and to retard evaporation of the water.
- DON'T consider your B battery fully charged unless the voltmeter gives a reading from 17 to 20 volts above rated voltage. This excess voltage, called gas voltage, shows just after charging and will quickly drop to the rated figure.
- DON'T permit your telephone receivers to be jarred. Such treatment demagnetizes the permanent magnets or develops loose connections. Have a hook to hang receivers on.
- DON'T permit electrolyte to fall below the plates in your A battery. Otherwise a chalky deposit, which is a non-conductor of electricity, will form on the plates, thus causing internal resistance.
- DON'T use in the A battery water that has been in contact with metal. Use only distilled water and handle it in glass, hard rubber, or glazed earthenware vessels.
- DON'T add *too much* water in the A battery, or solution will spill over and cause a short circuit on the outside of the battery, or will eat into the case.
- DON'T permit batteries to lie idle. If a battery is to be out of use for several months, leave it in care of a service station.
- DON'T allow oil or grease in switches or rheostat, for oil is a poor conductor of electricity.
- DON'T permit dust to gather in your radio set, for dust causes electrical leakage.
- DON'T use gas pipe for a lightning ground.
- DON'T use an iron pole or pipe for your aerial unless it is thoroughly insulated, with its base resting in a glass or porcelain insulator.
- DON'T let A battery run down. Keep above 1,225 and charge often.
- DON'T stretch aerial across power or telephone wires. This is dangerous and unlawful.
- DON'T burn tubes too bright. If you do, your reception will be poor and your tubes will not last long.
- DON'T forget to shut off your set.
- DON'T have a long ground wire.

Possible Causes of Trouble in Your Set

Tubes Refuse to Light

1. Corrosion of A-battery connections.
2. Contacts not tight.
3. Broken wire in the filament circuit.
4. Socket contact springs not making contact.
5. Filament burned out.
6. Short circuit between A-battery leads.

Noises

1. Defective tubes.
2. Too low a drop in the B-battery voltage.
3. C-battery voltage below rated figure.
4. Microphonic (humming) tube in detector position. (Try another tube there.)
5. Loud speaker on top of or too close to set. (Change its position.)
6. B-battery connections loose.
7. C-battery connections loose or reversed.
8. Filament rheostat kept too high.
9. Phone cords broken.
10. A-battery run down.
11. Loose connections.
12. Poor contact on secondary condenser.
13. Secondary condenser short-circuited.
14. Aerial swinging and touching other objects.
15. Aerial parallel to high voltage lines (such as electric light, telephone, etc.)

Fluctuating Signals

1. B-batteries run down.
2. A-battery run down.
3. Loose connections.
4. Swinging aerial.
5. Defective grid leak.
6. Grid leak of incorrect value.

Distortion

1. Defective tubes.
2. B-battery voltage too high.
3. In reflex sets, catswhisker corroded or not making contact with crystal.
4. A-battery run down.
5. Phone cord of too high capacity.
6. Secondary of transformer reversed.
7. C-battery needed.
8. Tubes not making contact with sockets.
9. Grid condenser of too high capacity.

Muffled Signals

1. Defective grid leak.
2. A-battery run down.
3. Grid leak of incorrect value.
4. B-battery voltage too high.
5. Grid condenser of too high capacity.
6. Phone cord of too high capacity.
7. Defective grid condenser.
8. Damp coils.
9. Potentiometer necessary.

Weak Signals

1. Defective tubes.
2. Defective grid leak.
3. A-battery polarity reversed.
4. B-battery of too low voltage.
5. A-battery run down.
6. Poor aerial or ground.
7. Tubes not making contact with sockets.
8. Grid condenser of too high capacity.
9. Phone cord of too high capacity.
10. Defective phones.
11. Loose connections.
12. Poor contact on secondary condenser.
13. Inferior parts, especially condenser.



How to Convert Kilocycles to Meters

KILOCYCLES	METERS	KILOCYCLES	METERS	KILOCYCLES	METERS	KILOCYCLES	METERS
550	545.1	800	374.8	1070	280.2	1300	230.6
560	535.4	810	370.2	1080	277.6	1310	228.9
570	526.0	820	365.6	1090	275.1	1320	227.1
580*	516.9	830	361.2	1100	272.6	1330	225.4
590*	508.2	850	352.7	1110	270.1	1340	223.7
600*	499.7	860	348.6	1120*	267.7	1350	222.1
610	491.5	870	344.6	1130	265.3	1360	220.4
620	483.6	880*	340.7	1140	263.0	1370	218.8
630*	475.9	890*	336.9	1150	260.7	1380	217.3
640	468.5	900	333.1	1160	258.5	1390	215.7
650	461.3	920	325.9	1170	256.3	1400	214.2
660	454.3	930*	322.4	1180	254.1	1410	212.6
670	447.5	940	319.0	1190	252.0	1420	211.1
680	440.9	950	315.6	1200*	249.9	1430	209.7
700	428.3	970	309.1	1210*	247.8	1440	208.2
710	422.3	980	305.9	1220	245.8	1450	206.8
720	416.4	990	302.8	1230	243.8	1460	205.4
740*	405.2	1000	299.8	1240	241.8	1470	204.0
750	399.8	1010*	296.9	1250	239.9	1480	202.6
760	394.5	1020	293.9	1260	238.0	1490	201.2
770	389.4	1040	288.3	1270	236.1	1500	199.2
780*	384.4	1050	285.5	1280	234.2		
790	379.5	1060	282.8	1290	232.4		

COMPLETE ALPHABETICAL LIST OF Broadcasting Stations in United States and Canada

Station	Locality	Watts	Wave Length	Station	Locality	Watts	Wave Length
KDKA	E. Pittsburgh, Pa.	50000	980	KGBX	St. Joseph, Mo.	100	1210
KDLR	Devils Lake, N. Dak.	100	1210	KGBZ	York, Neb.	500	930
KDYL	Salt Lake City, Utah	1000	1290	KGCA	Decorah, Iowa	50	1270
KEJK	Beverly Hills, Calif.	500	1250	KGCB	Enid, Okla.	100	1390
KELW	Burbank, Calif.	500	780	KGCI	San Antonio, Texas	100	1370
KEX	Portland, Ore.	5000	1180	KGCN	Concordia, Kan.	50	1420
KFAB	Lincoln, Neb.	5000	770	KGCR	Brooking, S. D.	100	1210
KFAD	Phoenix, Ariz.	500	620	KGCU	Mandan, N. D.	100	1200
KFAU	Boise, Idaho.	1000	1230	KGCV	Vida, Mont.	10	1370
KFBB	Havre, Mont.	250	1260	KGDA	Dell Rapids, S. D.	15	1210
KFBK	Sacramento, Calif.	100	1310	KGDE	Barrett, Minn.	50	1200
KFBL	Everett, Wash.	50	1500	KGDM	Stockton, Calif.	50	1150
KFBU	Laramie, Wyo.	500	600	KGDP	Pueblo, Colo.	10	1210
KFCB	Phoenix, Ariz.	100	1310	KGDR	San Antonio, Texas	100	1500
KFCR	Santa Barbara, Calif.	100	1500	KGDY	Oldham, S. D.	15	1200
KFDM	Beaumont, Tex.	500	560	KGEF	Los Angeles, Calif.	1000	1300
KFDX	Shreveport, La.	100	1200	KGEG	Yuma, Colo.	50	1200
KFDY	Brooking, S. D.	500	550	KGEN	El Centro, Calif.	100	1200
KFEC	Portland, Oregon	100	1370	KGER	Long Beach, Calif.	100	1370
KFEL	Denver, Colo.	250	940	KGEW	Fort Morgan, Colo.	100	1200
KFEQ	St. Joseph, Mo.	500	560	KGEZ	Kalispell, Mont.	100	1310
KFEY	Kollogg, Idaho	10	1370	KGFF	Alva, Okla.	100	1420
KFGQ	Booner, Iowa	10	1310	KGFG	Oklahoma City, Okla.	50	1370
KFH	Wichita, Kan.	1000	1300	KGFH	Glendale, Calif.	250	1000
KFHA	Gunnison, Colo.	50	1200	KGFI	San Angelo, Texas	15	1310
KFI	Los Angeles, Calif.	5000	640	KGFJ	Los Angeles, Calif.	109	1420
KFIF	Portland, Ore.	50	1420	KGFK	Hallock, Minn.	50	1200
KFIO	Spokane, Wash.	100	1230	KGFL	Raton, N. M.	50	1210
KFIU	Juneau, Alaska	10	1310	KGFW	Ravenna, Nebr.	50	1420
KFIZ	Fond du Lac, Wis.	100	1420	KGFX	Pierre, S. D.	200	580
KFJB	Marshalltown, Iowa	100	1200	KGFF	Cedar Grove, La.	50	1010
KFJF	Oklahoma City, Okla.	5000	1470	KGHH	Albuquerque, N. M.	100	1420
KFJI	Astoria, Ore.	50	1370	KGHM	Pueblo, Colo.	50	1200
KFJM	Grand Forks, N. D.	500	550	KGHA	Pueblo, Colo.	250	1320
KFJR	Portland, Ore.	500	1300	KGHB	Honolulu, H. I.	5	1420
KFJY	Fort Dodge, Iowa	100	1310	KGHD	Missoula, Mont.	250	1320
KFJZ	Fort Worth, Texas	100	1370	KGHF	Pueblo, Colo.	50	1370
KFKA	Greeley, Colo.	500	880	KGHG	McGehee, Ark.	15	1500
KFKB	Milford, Kan.	5000	1130	KGHI	Little Rock, Ark.	500	950
KFKU	Lawrence, Kan.	1000	1220	KGHJ	Billings, Mont.	50	1500
KFKZ	Kirksville, Mo.	50	1210	KGHL	Richmond, Tex.	100	1320
KFLV	Rookford, Ill.	500	1410	KGIO	Idaho Falls, Ida.	100	1320
KFLX	Galveston, Texas	100	1210	KGIQ	Idaho Falls, Ida.	100	1260
KFMX	Northfield, Minn.	1000	1250	KGIR	Butte, Mont.	250	890
KFNF	Shenandoah, Iowa	500	890	KGJF	Little Rock, Ark.	100	1500
KFOA	Seattle, Wash.	1000	1270	KGKB	Goldswaite, Tex.	100	1370
KFON	Long Beach, Calif.	1000	1250	KGKL	Georgetown, Tex.	250	570
KFOR	Lincoln, Nebr.	100	1210	KGKO	Wichita Falls, Tex.	10000	790
KFPL	Dublin, Texas	15	1370	KGO	Oakland, Calif.	100	1310
KFPM	Greenville, Texas	15	1310	KGRC	San Antonio, Texas	1000	1410
KFPW	Sulphur Springs, Ark.	50	1340	KGRS	Amarillo, Texas	50	1500
KFPY	Spokane, Wash.	500	1390	KGTT	San Francisco, Calif.	500	940
KFOB	Fort Worth, Texas	1000	4240	KGU	Honolulu, Hawaii	1000	620
KFOD	Anchorage, Alaska	100	1230	KGW	Portland, Ore.	15	1420
KFOU	Holy City, Calif.	100	1500	KGY	Lacey, Wash.	1000	900
KFOW	Seattle, Wash.	100	1420	KHJ	Los Angeles, Calif.	1000	950
KFQZ	Hollywood, Calif.	250	850	KHQ	Spokane, Wash.	100	560
KFRC	San Francisco, Calif.	1000	613	KICK	Red Oak, Iowa	100	1100
KFRU	Columbia, Mo.	500	630	KJBS	San Francisco, Calif.	5000	970
KFSD	San Diego, Calif.	500	600	KJR	Seattle, Wash.	15	1420
KFSG	Los Angeles, Calif.	500	1120	KKP	Seattle, Wash.	50	1290
KFUL	Galveston, Texas	500	1290	KLCN	Blytheville, Ark.	1000	1390
KFUM	Colorado Springs, Colo.	1000	1270	KLRA	Little Rock, Ark.	100	1420
KFUO	St. Louis, Mo.	500	550	KLS	Oakland, Calif.	500	880
KFUP	Denver, Colo.	100	1500	KLX	Oakland, Calif.	1000	560
KFUR	Ogden, Utah	50	1310	KLZ	Dupont, Colo.	500	930
KFVD	Culver City, Calif.	250	700	KMA	Shenandoah, Iowa	1000	950
KFVS	Cape Girardeau, Mo.	50	1210	KMBC-KLDS	Independence City, Mo.	50	1420
KFWB	Los Angeles, Calif.	1000	950	KMED	Medford, Ore.	500	1120
KFWC	Ontario, Calif.	100	1200	KMIK	Inglewood, Calif.	100	1200
KFWF	St. Louis, Mo.	100	1200	KMJ	Fresno, Calif.	1000	740
KFWI	San Francisco, Calif.	500	930	KMMJ	Clay Center, Neb.	500	1340
KFWWM	Oakland, Calif.	500	930	KMO	Tacoma, Wash.	5000	1090
KFWO	Avalon, Calif.	100	1500	KMOX	St. Louis, Mo.	1000	570
KFXD	Jerome, Idaho	50	1420	KMTR	Hollywood, Calif.	500	780
KFXF	Denver, Colo.	250	940	KNRC	Santa Monica, Calif.	5000	1050
KFXJ	Edgewater, Colo.	50	1500	KNX	Hollywood, Calif.	12500	830
KFXR	Oklahoma City, Okla.	100	1420	KOA	Denver, Colo.	1000	560
KFXY	Flagstaff, Ariz.	100	1420	KOAC	Corvallis, Ore.	1000	1180
KFYO	Abilene, Texas	100	1420	KOB	State College, N. M.	100	1420
KFYR	Bismarck, N. D.	500	550	KOCW	Chickasha, Okla.	1000	1260
KGA	Spokane, Wash.	5000	1470	KOIL	Council Bluffs, Ia.	1000	940
KGAR	Tucson, Ariz.	100	1370	KOIN	Portland, Ore.	1000	920
KGB	San Diego, Calif.	250	1360	KOMO	Seattle, Wash.	1000	920
KGBU	Ketchikan, Alaska	500	900				

Station	Locality	Watts	Wave Length	Station	Locality	Watts	Wave Length
KORE	Eugene, Ore.	100	1420	WBBM-WJBT	Chicago, Ill.	25000	770
KOW	Denver, Colo.	500	1390	WBBR	Rossville, N. Y.	1000	1300
KPCB	Seattle, Wash.	100	1210	WBBW	Norfolk, Va.	100	1200
KPJM	Prescott, Ariz.	15	1510	WBBY	Charleston, S. C.	75	1200
KPLA	Los Angeles, Calif.	1000	570	WBBZ	Ponca City, Okla.	100	1200
KPO	San Francisco, Calif.	5000	680	WBET	Boston, Mass.	500	1360
KPOF	Denver, Colo.	500	880	WBMH	Detroit, Mich.	100	1310
KPPC	Pasadena, Calif.	100	1200	WBMS	Union City, N. J.	250	1450
KPO	Seattle, Wash.	100	1210	WBWY	New York, N. Y.	250	1350
KPRC	Houston, Texas	1000	920	WBOW	Terre Haute, Ind.	100	1310
KPSN	Pasadena, Calif.	1000	950	WBRC	Birmingham, Ala.	500	930
KQV	Pittsburgh, Pa.	500	1380	WBRE	Wilkes-Barre, Pa.	100	1310
KQW	San Jose, Calif.	500	1010	WBRL	Tilton, N. H.	500	1430
KRE	Berkeley, Calif.	100	1500	WBSO	Wellesley, Mass.	100	780
KRGV	Harlingen, Texas.	500	1260	WBT	Charlotte, N. C.	5000	1080
KRLD	Dallas, Texas	10000	1040	WBZ	E. Springfield, Mass.	15000	900
KRMD	Shreveport, La.	50	1200	WBZA	Boston, Mass.	500	990
KRSC	Seattle, Wash.	50	1120	WCAC	Mansfield, Conn.	500	1330
KSAC	Manhattan, Kans.	500	580	WCAD	Canton, N. Y.	500	1220
KSBA	Shreveport, La.	1000	1450	WCAG	Pittsburgh, Pa.	500	1220
KSCJ	Sioux City, Ia.	1200	1330	WCAH	Columbus, Ohio	250	1430
KSD	St. Louis, Mo.	500	550	WCAJ	Lincoln, Neb.	500	590
KSEI	Pocatello, Idaho	250	900	WCAL	Northfield, Minn.	1000	1250
KSL	Salt Lake City, Utah	5000	1130	WCAM	Camden, N. J.	500	1280
KSMR	Santa Maria, Calif.	100	1200	WCAN	Baltimore, Md.	250	600
KSO	Clarinda, Iowa	1000	1380	WCAP	Asbury Park, N. J.	500	1280
KSOO	Sioux Falls, S. D.	1000	1100	WCAT	Rapid City, S. D.	100	1200
KSTP	St. Paul-Minneapolis, Minn.	10000	1460	WCAU	Philadelphia, Pa.	5000	1170
KTAB	Oakland, Calif.	500	1280	WCAZ	Burlington, Vt.	100	1200
KTAP	San Antonio, Texas.	100	1210	WCBZ	Carthage, Ill.	100	1070
KTBI	Los Angeles, Calif.	1000	1300	WCBH	Allentown, Pa.	100	1500
KTBR	Portland, Ore.	500	1300	WCBJ	Zion, Ill.	5000	1080
KTBS	Hot Springs Nat. Park, Ark.	5000	800	WCBK	Baltimore, Md.	100	1370
KTNT	Muscatine, Iowa	5000	1170	WCBM	Springfield, Ill.	100	1210
KTSA	San Antonio, Texas.	5000	1290	WCDO	Minneapolis-St. Paul, Minn.	10000	810
KTUE	Houston, Texas.	5	1370	WCDA	New York, N. Y.	250	1350
KTW	Seattle, Wash.	1000	1270	WCFL	Chicago, Ill.	50000	970
KUJ	Longview, Wash.	10	1500	WCGU	Coney Island, N. Y.	500	1400
KUOA	Fayetteville, Ark.	1000	1390	WCLB	Long Beach, N. Y.	100	1500
KUOM	Missoula, Mont.	500	570	WCLO	Kenosha, Wis.	100	1200
KUSD	Vermillion, S. D.	500	890	WCLS	Joliet, Ill.	100	1310
KUT	Austin, Texas.	500	1120	WCNA	Culver, Ind.	500	1400
KVI	Tacoma, Wash.	1000	1340	WCNA	Pensacola, Fla.	500	1120
KVL	Seattle, Wash.	100	1500	WCOA	Columbus, Miss.	500	880
KVOO	Tulsa, Okla.	1000	1140	WCOB	Greenville, N. Y.	100	1210
KVOS	Bellingham, Wash.	250	570	WCOH	Chicago, Ill.	100	1210
KWBS	Portland, Ore.	15	1500	WCRW	Chicago, Ill.	100	1210
KWCR	Cedar Rapids, Ia.	100	1310	WCSH	Portland, Me.	500	940
KWEA	Shreveport, La.	100	1370	WCSO	Springfield, Ohio	500	1380
KWG	Stockton, Calif.	100	1420	WCWK	Fort Wayne, Ind.	500	1230
KWJJ	Portland, Ore.	500	1060	WDAA	Tampa, Fla.	1000	620
KWK	St. Louis, Mo.	1000	1350	WDAF	Kansas City, Mo.	1000	610
KWKC	Kansas City, Mo.	100	1370	WDAG	Amarillo, Tex.	1000	1410
KWKH	Shreveport, La.	20000	850	WDAH	El Paso, Tex.	100	1310
KWLC	Decorah, Iowa	50	1270	WDAY	Fargo, N. D.	1000	1280
KWSC	Pullman, Wash.	500	1390	WDBJ	Roanoke, Va.	500	930
KWTC	Santa Ana, Calif.	100	1500	WDBO	Orlando, Fla.	1000	620
KWWG	Brownsville, Texas	500	1260	WDEL	Wilmington, Del.	250	1410
KXA	Seattle, Wash.	500	570	WDGY	Minneapolis, Minn.	500	1410
KXL	Portland, Ore.	500	1230	WDOO	Chattanooga, Tenn.	1000	1280
KXRO	Aberdeen, Wash.	50	1210	WDRC	New Haven, Conn.	500	1330
KYA	San Francisco, Calif.	1000	1230	WDSU	New Orleans, La.	1000	1270
KYW-KFKX	Chicago, Ill.	5000	1020	WDWF-WLSI	Cranston, R. I.	100	1370
KZM	Hayward, Calif.	100	1370	WDZ	Tuscola, Ill.	100	1070
NAA	Washington, D. C.	1000	690	WEAF	Bellmore, N. Y.	50000	660
WAAD	Cincinnati, Ohio	25	1370	WEAI	Ithaca, N. Y.	100	740
WAAF	Chicago, Ill.	500	920	WEAN	Providence, R. I.	500	1160
WAAM	Newark, N. J.	250	1250	WEAO	Columbus, Ohio	750	550
WAAT	Jersey City, N. J.	300	1070	WEAR	Cleveland, Ohio	1000	1070
WAAW	Omaha, Neb.	500	660	WEBC	Superior, Wis., and Duluth, Minn.	1000	1240
WABC-WBQQ	New York, N. Y.	5000	860	WEBE	Cambridge, Ohio	10	1210
WABF	Kingston, Pa.	250	1440	WEBR	Harrisburg, Ill.	50	1210
WABI	Bangor, Me.	100	1200	WEBW	Buffalo, N. Y.	100	1310
WABY	Philadelphia, Pa.	50	1310	WEDC	Beloit, Wis.	250	600
WABZ	New Orleans, La.	50	1200	WEDH	Chicago, Ill.	100	1210
WADC	Akron, Ohio	1000	1320	WEEL	Eric, Pa.	30	1420
WAFD	Detroit, Mich.	100	1420	WEEL	Boston, Mass.	500	590
WAGM	Royal Oak, Mich.	50	1310	WEHS	Evanston, Ill.	100	1310
WAIU	Columbus, Ohio	5000	640	WELK	Philadelphia, Pa.	500	1360
WALK	Willow Grove, Pa.	50	1500	WEMC-M	Berrien Springs, Mich.	1000	680
WAPI	Auburn, Ala.	5000	1140	WENR-W	Chicago, Ill.	5000	870
WASH	Grand Rapids, Mich.	250	1270	WEPS	Gloucester, Mass.	100	1200
WBAA	Lafayette, Ind.	500	1400	WEVD	New York, N. Y.	500	1300
WBAC	Harrisburg, Pa.	500	1120	WEW	St. Louis, Mo.	1000	760
WBAL	Baltimore, Md.	5000	1060	WFAA	Dallas, Tex.	5000	1040
WBAP	Fort Worth, Texas	5000	800	WFAN	Philadelphia, Pa.	500	610
WBAW	Nashville, Tenn.	5000	1490	WFBC	Knoxville, Tenn.	50	1200
WBAX	Wilkes-Barre, Pa.	100	1210	WFBE	Cincinnati, O.	100	1200
WBBC	Brooklyn, N. Y.	500	1400	WFBG	Altoona, Pa.	100	1310
WBBL	Richmond, Va.	100	1370				

Station	Locality	Watts	Wave Length	Station	Locality	Watts	Wave Length
WFBJ	Collegetville, Minn.	100	1370	WKAQ	San Juan, Porto Rico	500	580
WFBF	Syracuse, N. Y.	750	900	WKAR	East Lansing, Mich.	500	1040
WFBM	Indianapolis, Ind.	500	1230	WKAV	Laconia, N. H.	50	1310
WFCI	Baltimore, Md.	250	1120	WKBB	Joliet, Ill.	100	1310
WFDI	Pawtucket, R. I.	100	1370	WKBC	Birmingham, Ala.	10	1310
WFI	Flint, Mich.	100	1310	WKBE	Webster, Mass.	100	1200
WFIW	Philadelphia, Pa.	500	560	WKBF	Indianapolis, Ind.	500	1400
WFKD	Hopkinsville, Ky.	1000	940	WKBH	La Crosse, Wis.	1000	1380
WFLA-WSUN	Akron, Ohio	500	1450	WKBI	Chicago, Ill.	50	1310
WGAL	Frankford, Pa.	50	1310	WKBN	Youngstown, Ohio	500	570
WGBB	Clearwater-St. Pet'burg, Fla.	1000	900	WKBO	Jersey City, N. J.	250	1450
WGBC	Lancaster, Pa.	15	1310	WKBP	Battle Creek, Mich.	50	1420
WGBF	Freeport, N. Y.	100	1210	WKBQ	New York, N. Y.	250	1350
WGBI	Memphis, Tenn.	500	1430	WKBS	Galesburg, Ill.	100	1310
WGBS	Evansville, Ind.	500	630	WKBV	Brookville, Ind.	100	1509
WGCM	Seranton, Pa.	250	880	WKBW	Buffalo, N. Y.	5000	1470
WGCP	Astoria, (L.I.) N. Y.	500	1180	WKBZ	Ludington, Mich.	50	1500
WGES	Gulfpport, Miss.	15	1370	WKEN	Buffalo, N. Y.	750	1040
WGHP	Newark, N. J.	500	1250	WKJC	Lancaster, Pa.	100	1200
WGN-WLBI	Chicago, Ill.	500	1360	WKRC	Cincinnati, Ohio	500	550
WGR	Fraser, Mich.	15000	720	WKY	Oklahoma City, Okla.	1000	900
WGST	Chicago, Ill.	750	550	WLAC	Nashville, Tenn.	5000	1490
WGY	Buffalo, N. Y.	500	890	WLAP	Louisville, Ky.	30	1200
WHA	Atlanta, Ga.	50000	790	WLB-			
WHAD	Schenectady, N. Y.	750	570	WGM5	Minneapolis, Minn.	1000	1230
WHAM	Madison, Wis.	500	900	WLBC	Muncie, Ind.	50	1310
WHAP	Milwaukee, Wis.	5000	1150	WLBK	Kansas City, Mo.	100	1200
WHAS	Rochester, N. Y.	1000	1300	WLBG	Petersburg, Va.	100	1200
WHAZ	New York, N. Y.	5000	820	WLBH	Farmingdale, N. Y.	30	1420
WHB	Louisville, Ky.	500	1300	WLBL	Stevens Point, Wis.	1000	900
WHBC	Troy, N. Y.	1000	950	WLBQ	Galesburg, Ill.	100	1310
WHBD	Kansas City, Mo.	10	1200	WLBV	Mansfield, Ohio	100	1210
WHBF	Bellefontaine, Ohio	100	1370	WLBW	Oil City, Pa.	500	1260
WHBL	Rock Island, Ill.	100	1210	WLBX	Long Island, N. Y.	100	1500
WHBP	Sheboygan, Wis.	500	1410	WLBZ	Dover, Foxcroft, Me.	500	620
WHBQ	Johnstown, Pa.	100	1310	WLCI	Ithaca, N. Y.	50	1210
WHBU	Memphis, Tenn.	100	1370	WLX	Lexington, Mass.	500	560
WHBW	Anderson, Ind.	100	1210	WLX	Philadelphia, Pa.	500	560
WHBY	Philadelphia, Pa.	100	1500	WLOE	Chelsea, Mass.	100	1500
WHDI	West De Pere, Wis.	50	1200	WLS	Chicago, Ill.	5000	870
WHFC-WABO	Rochester, N. Y.	500	1440	WLTH	Brooklyn, N. Y.	500	1400
WHH	Chicago, Ill.	100	1310	WLW	Cincinnati, Ohio	50000	700
WHN	Cleveland, Ohio	1000	1390	WLWL	New York, N. Y.	5000	1100
WHO	New York, N. Y.	250	1010	WMAK	Casnovia, N. Y.	500	1440
WHPP	Des Moines, Ia.	5000	1000	WMAF	South Dartmouth, Mass.	500	1360
WHT	New York, N. Y.	10	1420	WMAK	Martinsville, N. Y.	750	900
WIAS	Chicago, Ill.	5000	1480	WMAL	Washington, D. C.	250	630
WIBA	Ottumwa, Ia.	100	560	WMAN	Columbus, Ohio	50	1210
WIBG	Madison, Wis.	100	1210	WMAZ	Chicago, Ill.	5000	670
WIBM	Elkins Park, Pa.	50	930	WMAZ	St. Louis, Mo.	100	1200
WIBO	Jackson, Mich.	100	1370	WMBA	Macon, Ga.	50	890
WIBR	Chicago, Ill.	5000	1480	WMBC	Newport, R. I.	100	1500
WIBS	Steuenville, Ohio	50	1200	WMBD	Detroit, Mich.	100	1420
WIBU	Elizabeth, N. J.	250	1450	WMBF	Peoria Heights, Ill.	500	1440
WIBW	Poynette, Wis.	100	1310	WMBG	Miami Beach, Fla.	500	560
WIBX	Topeka, Kans.	1000	1300	WMBH	Richmond, Va.	100	1210
WIBZ	Utica, N. Y.	100	1310	WMBI	Joplin, Mo.	100	1210
WICC	Montgomery, Ala.	15	1500	WMBL	Chicago, Ill.	5000	1080
WIL	Bridgeport, Conn.	500	1430	WMBM	Lakeland, Fla.	100	1310
WINR	St. Louis, Mo.	1000	1350	WMBN	Memphis, Tenn.	10	1500
WIOD	Bayshore, N. Y.	100	1210	WMBQ	Auburn, N. Y.	100	1370
WIP	Miami Beach, Fla.	1000	1240	WMBR	Brooklyn, N. Y.	100	1500
WISN	Philadelphia, Pa.	500	610	WMBR	Tampa, Fla.	100	1210
WJAD	Milwaukee, Wis.	250	1120	WMB5	Lemoyne, Pa.	500	1430
WJAG	Waco, Texas.	1000	1240	WMC	Memphis, Tenn.	500	780
WJAK	Norfolk, Nebr.	500	1060	WMCA	Hoboken, N. J.	500	570
WJAM	Kokomo, Ind.	50	1310	WMES	Boston, Mass.	50	1500
WJAR	Waterloo, Iowa	100	1200	WMMN	Fairmount, W. Va.		890
WJAS	Providence, R. I.	250	890	WMPC	Lapeer, Mich.	30	1310
WJAX	Pittsburgh, Pa.	500	1290	WMRJ	Jamaica, N. Y.	10	1420
WJAY	Jacksonville, Fla.	1000	1260	WMSG	New York, N. Y.	250	1350
WJAZ	Cleveland, Ohio	500	1450	WNAC-WBIS	Boston, Mass.	500	1290
WJBB	Chicago, Ill.	5000	1480	WNAD	Norman, Okla.	500	1010
WJBC	Sarasota, Fla.	250	1010	WNAT	Philadelphia, Pa.	100	1310
WJBI	La Salle, Ill.	100	1200	WNAX	Yankton, S. D.	500	890
WJBK	Red Bank, N. J.	100	1210	WNBK	Endicott, N. Y.	50	1500
WJBK	Ypsilanti, Mich.	50	1370	WNBH	New Bedford, Mass.	250	1450
WJBL-WBAO	Decatur, Ill.	100	1200	WNBK	Knoxville, Tenn.	50	1310
WJBO	New Orleans, La.	100	1370	WNBO	Washington, Pa.	15	1200
WJBU	Lewisburg, Pa.	100	1210	WNBQ	Rochester, N. Y.	15	1500
WJBW	New Orleans, La.	30	1200	WNBK	Memphis, Tenn.	500	1430
WJBY	Gadsden, Ala.	50	1210	WNBX	Carbondale, Pa.	5	1200
WJJD	Mooseheart, Ill.	20000	830	WNBZ	Springfield, Vt.	10	1200
WJKS	Gary, Ind.	500	1360	WNEW	Saranac Lake, N. Y.	10	1290
WJR-WCX	Pontiac, Mich.	5000	750	WNJ	Newport News, Va.	100	1310
WJZ	New York, N. Y.	30000	760	WNJ	Newark, N. J.	500	1450
				WNOX	Knoxville, Tenn.	1000	560
				WNRC	Greensboro, N. C.	500	1440
				WNYC	New York, N. Y.	500	570

Station	Locality	Watts	Wave Length	Station	Locality	Watts	Wave Length
WOAI	San Antonio, Texas	5000	1190	WRJN	Racine, Wis.	100	1200
WOAN	Lawrenceburg, Tenn.	500	600	WRK	Hamilton, Ohio	100	1420
WOAX	Trenton, N. J.	500	1280	WRM	Urbana, Ill.	500	570
WOBT	Union City, Tenn.	15	1310	WRNY	New York, N. Y.	250	1010
WOBV	Charleston, W. Va.	250	580	WRR	Dallas, Texas	5000	1190
WOC	Davenport, Iowa	5000	1000	WRUF	Gainesville, Fla.	5000	1470
WOCJ	Jamestown, N. Y.	25	1210	WRVA	Richmond, Va.	5000	1110
WODA	Paterson, N. J.	1000	1250	WSAI	Mason, Ohio	5000	800
WOI	Ames, Iowa	5000	560	WSAJ	Grove City, Pa.	100	1310
WOKO	Peekskill, N. Y.	500	1440	WSAN	Allentown, Pa.	100	1500
WOMT	Manitowoc, Wis.	100	1210	WSAR	Fall River, Mass.	250	1450
WOOD	Grand Rapids, Mich.	500	1270	WSAZ	Huntington, W. Va.	250	580
WOO	Kansas City, Mo.	1000	610	WSB	Atlanta, Ga.	10000	740
WOR	Newark, N. J.	5000	710	WSBC	Chicago, Ill.	100	1210
WORD	Batavia, Ill.	5000	1480	WSBT	South Bend, Ind.	500	1230
WOS	Jefferson City, Mo.	500	630	WSEA	Portsmouth, Va.	500	780
WOV	New York, N. Y.	1000	1130	WSGH-			
WOW	Omaha, Neb.	1000	590	WSDA	Brooklyn, N. Y.	500	1400
WOWO	Fort Wayne, Ind.	5000	1160	WSIX	Springfield, Tenn.	100	1210
WPCC	Chicago, Ill.	500	570	WSKC	Bay City, Mich.	500	1410
WPCH	New York, N. Y.	500	810	WSM	Nashville, Tenn.	5000	650
WPFG	Atlantic City, N. J.	5000	1100	WSMB	New Orleans, La.	750	1320
WPOR	Norfolk, Va.	500	780	WSMD	Salisbury, Md.	100	1310
WPRC	Harrisburg, Pa.	100	1200	WSMK	Dayton, Ohio	200	570
Wpsc	State College, Pa.	500	1230	WSPD	Toledo, Ohio	500	1340
WPSW	Philadelphia, Pa.	50	1500	WSRO	Middletown, Ohio	100	1420
WPTF	Raleigh, N. C.	10000	680	WSSH	Boston, Mass.	100	1420
WQAM	Miami, Fla.	750	1240	WSUI	Iowa City, Iowa	500	580
WQAN	Seranton, Pa.	250	880	WSVS	Buffalo, N. Y.	50	1370
WQAD-WPAP	New York, N. Y.	250	1010	WSYR	Syracuse, N. Y.	250	570
WQBC	Utica, Miss.	300	1360	WTAD	Quincy, Ill.	500	1440
WQBJ	Clarksburg, W. Va.	65	1200	WTAG	Worcester, Mass.	250	580
WQBZ	Weirton, W. Va.	60	1200	WTAM	Cleveland, Ohio	3500	1070
WRAF	La Porte, Ind.	100	1200	WTAQ	Eau Claire, Wis.	1000	1330
WRAK	Erie, Pa.	50	1370	WTAR	Norfolk, Va.	500	780
WRAW	Reading, Pa.	100	1310	WTAW	College Station, Texas	500	1120
WRAX	Philadelphia, Pa.	250	1440	WTAX	Streator, Ill.	50	1210
WRBC	Valparaiso, Ind.	500	1240	WTAZ	Richmond Hills, Va.	15	1210
WRBH	Manchester, N. H.	500	C. P.	WTFI	Toccoa, Ga.	500	1450
WRBI	Tifton, Ga.	100	1310	WTFE	Mt. Vernon Hills, Va.	10000	1460
WRBJ	Hattiesburg, Miss.	10	1500	WTHS	Atlanta, Ga.	100	1315
WRBL	Columbus, Ga.	50	1200	WTIC	Hartford, Conn.	250	1060
WRBQ	Greenville, Miss.	100	1200	WTMJ	Milwaukee, Wis.	1000	570
WRBT	Wilmington, N. C.	50	1370	WWAE	Hammond, Ind.	100	1200
WRBU	Gastonia, N. C.	50	1210	WWJ	Detroit, Mich.	1000	920
WRBW	Columbia, S. C.	15	1310	WWL	New Orleans, La.	5000	850
WRBX	Roanoke, Va.	250	930	WWNC	Asheville, N. C.	1000	570
WRC	Washington, D. C.	500	950	WWNL	Woodslee, N. Y.	100	1500
WREC	Memphis, Tenn.	500	600	WWVA	Wheeling, W. Va.	5000	1160
WREN	Lawrence, Kan.	1000	1220				
WRHF	Washington, D. C.	150	1270				
WRHM	Fridley, Minn.	1000	1230				

Station	Locality	Watts	Kilo-cycles	Station	Locality	Watts	Kilo-cycles
CFAC	Calgary, Alta., Can.	500	690	CJOR	Sea Island, B. C., Can.	50	1030
CFBO	St. John, N. B., Can.	50	800	CJRM	Moosejaw, Sask., Can.	500	1010
CFCA	Toronto, Ont., Can.	500	840	CJRW	Fleming, Sask., Can.	500	1010
CFCH	Montreal, P. Q., Can.	1650	730	CJSC	Toronto, Ont., Can.	500	580
CFCH	Iroquois Falls, Ont., Can.	250	600	CKAC	Montreal, Que., Can.	1200	730
CFCN	Calgary, Alta., Can.	1800	690	CKCD	Vancouver, B. C., Can.	1000	730
CFCO	Chatham, Ont., Can.	25	1210	CKCI	Quebec, Que., Can.	25	880
CFCT	Victoria, B. C., Can.	500	630	CKCK	Regina, Sask., Can.	500	960
CFCY	Charlottetown, P. E. I., Can.	100	960	CKCL	Toronto, Ont., Can.	500	580
CFJC	Kamloops, B. C., Can.	15	1120	CKCO	Ottawa, Ont., Can.	100	690
CFLC	Prescott, Ont., Can.	50	1010	CKCR	Brantford, Ont., Can.	50	1010
CFMC	Kingston, Ont., Can.	20	1120	CKCV	Quebec, P. Q., Can.	50	880
CFNB	Fredericton, N. B., Can.	50	1210	CKFC	Vancouver, B. C., Can.	50	730
CFQC	Saskatoon, Sask., Can.	500	910	CKGW	Bowmanville, Ont., Can.	5000	960
CFRB	King, Ont., Can.	1000	960	CKL	Red Deer, Alta., Can.	1000	840
CFRC	Kingston, Ont., Can.	500	1120	CKMC	Cobalt, Ont., Can.	5	1210
CHCA	Calgary, Alta., Can.	250	690	CKMO	Vancouver, B. C., Can.	50	730
CHCK	Charlottetown, P. E. I., Can.	30	960	CKNC	Toronto, Ont., Can.	500	580
CHCS	Hamilton, Ont., Can.	10	880	CKOC	Hamilton, Ont., Can.	100	880
CHCY	Red Deer, Alb., Can.	1000	840	CKOW	Scarboro Station, Ont., Can.	500	840
CHGS	Summerside, P. E. I., Can.	25	1120	CKPC	Preston, Ont., Can.	25	1210
CHMA	Edmonton, Alta., Can.	250	580	CKPR	Midland, Ont., Can.	50	1120
CHML	Hamilton, Ont., Can.	50	880	CKSH	St. Hyacinthe, P. Q., Can.	50	1010
CHNC	Toronto, Ont., Can.	500	580	CKUA	Edmonton, Alta., Can.	500	580
CHNS	Halifax, N. S., Can.	500	930	CKWX	Vancouver, B. C., Can.	100	730
CHRC	Quebec, Que., Can.	5	880	CKY	Winnipeg, Man., Can.	500	780
CHWC	Regina, Sask., Can.	15	960	CNRA	Moncton, N. B., Can.	500	630
CHWK	Chilliwack, B. C., Can.	5	1210	CNRC	Calgary, Alta., Can.	500	690
CHYC	Montreal, Que.	750	730	CNRE	Edmonton, Alta., Can.	500	580
CJBC	Toronto, Ont., Can.	500	840	CNRM	Montreal, Que., Can.	1650	730
CJBR	Regina, Sask., Can.	500	960	CNRQ	Ottawa, Ont., Can.	500	690
CJCA	Edmonton, Alta., Can.	500	580	CNRQ	Quebec City, Que., Can.	50	880
CJ CJ	Calgary Alta., Can.	250	690	CNRR	Regina, Sask., Can.	500	960
CJCG	London, Ont., Can.	500	910	CNRS	Saskatoon, Sask., Can.	500	910
CJGJ	Yorkton, Sask., Can.	500	630	CNRT	Toronto, Ont., Can.	500	840
CJHS	Saskatoon, Sask., Can.	250	910	CNRV	Vancouver, B. C., Can.	500	1030
CJOC	Lethbridge, Alta., Can.	50	1120	CNRW	Winnipeg, Man., Can.	500	780

COMPLETE ALPHABETICAL LIST OF Mexican Broadcasting Stations

Station	Locality	Watts	Kilo-cycles	Station	Locality	Watts	Kilo-cycles
CZF	Chihuahua	250	310	CZE	Mexico City	500	350
CYR	Mazatlan	250	475	CYH	Monterey	250	311
CYY	Merida	100	548	CYF	Oaxaca	100	265
CYA	Mexico City	500	300	CYU	Pueblo	100	312
CYB	Mexico City	500	275	CYQ	Tampico	100	322
CYH	Mexico City	100	375	CYZ	Tampico	20	
CYJ	Mexico City	2000	400	CYM	Torreon	1500	225
CYL	Mexico City	500	400	CYC	Vera Cruz	50	337
CYO	Mexico City	100	425	CYD	Vera Cruz		
CYX	Mexico City	500	325				

Cuban Broadcasting Stations

Station	Locality	Watts	Kilo-cycles	Station	Locality	Watts	Kilo-cycles
6EV	Caibarien	50	250	2MA	Habana	50	215
7AZ	Camaguey	10	225	2MG	Habana	20	284
7EV	Camaguey	5	190	2MU	Habana	10	265
7GT	Camaguey	5	195	20K	Habana	100	350
7LO	Camaguey	20	230	20L	Habana	100	257
6YR	Camajuani	20	200	2RK	Habana	20	315
8KP	Caney	30	180	2TW	Habana	20	270
8LC	Caney	30	300	2UF	Habana	10	275
7BY	Ciego de Avilla	20	235	2XX	Habana	5	225
7FU	Ciego de Avilla	10	200	6RG	Habana	20	200
7HF	Ciego de Avilla	10	192	2FG	Hershey	20	200
7IR	Ciego de Avilla	20	193	2JF	Mariano	5	254
6BY	Cienfuegos	200	260	2JL	Mariano	5	294
6JQ	Cienfuegos	10	275	5DW	Matanzas	100	270
6KC	Cienfuegos	10	240	6HS	Sag. la Gr'nde	10	200
5EV	Colon	5	360	6KP	S'cti Spiritus	20	195
7SR	Elia	500	350	8HS	Santiago	20	200
1AZ	Guanajay	5	275	8BY	Santiago	100	250
PWX	Habana	500	400	8FU	Santiago	15	225
2AB	Habana	10	200	8IR	Santiago	20	190
2BB	Habana	15	250	8JQ	Santiago	20	130
2CG	Habana	15	350	6KW	Tuinucu	100	340
2CT	Habana	5	200	6XJ	Tuinucu	100	278
2GF	Habana	10	192				

Foreign Broadcasting Stations

Station	Location	Watts	Meter	Station	Location	Watts	Meter
LON	Cape Town, Africa	1500	375		Leipzig, Germany	4000	365.8
LOS	Buenos Aires, Argentina, S. A.	5000	210		Munich, Germany	4000	235.7
LOQ	Buenos Aires, Argentina, S. A.	5000	291.2		Stuttgart, Germany	4000	379.7
7LZ	Buenos Aires, Argentina, S. A.	3000	261	HHK	Port Au Prince, Hayti	1000	361.2
HLZ	Hobart, Australia	3000	516	MT1	Budapest, Hungary	2000	555.6
2FC	Sydney, Australia	2000	442		Reykjavik, Iceland	5000	333.3
ORV	Vienna, Austria	14000	517.2		Bombay, India	3000	357.1
BAV	Brussels, Belgium	1500	508.5		Calcutta, India	3000	370.4
SQAA	Rio de Janeiro, Brazil, S. A.	2000	400	6CK	Cork, Ireland	1000	400
SQAG	Sao Paulo, Brazil, S. A.	1000	360	2RN	Dublin, Ireland	1500	319.1
SQBO	Sao Paulo, Brazil, S. A.	1000	225.4	1MI	Milan, Italy	7000	315.8
CMAI	Concepcion, Chile	1500	345	1NA	Naples, Italy	1500	333.3
CMAC	Santiago, Chile	1200	360	1RO	Rome, Italy	3000	449.
CMAD	Santiago, Chile	1000	320	JOGK	Kumamoto, Japan	10000	380
GOW	Hong Kong, China (Now Building)	2000	300	JQAK	Dairen, Kwangtung	5000	395
CKMK	Mukden, China	1000	425		Oslo, Norway	1500	370.4
JODK	Seoul, Chosen Korea	1000	357	OAX	Lima, Peru	1500	360
OKP	Pragu, Czecho-slovakia	5000	384.9		Katowice, Poland	2000	422
	Copenhagen, Denmark	2000	337	PIAA	Lisbon, Portugal	500	305
	Helsingfors, Finland	1000	240	RA1	Moscow, Russia	40000	206.8
	Helsingfors, Finland	1000	500	RA42	Leningrad, Russia	10000	299.8
	Bordeaux, France	1500	419	EJ18	San Sebastian, Spain	3000	297
	Toulouse, France	2000	389.6	SASA	Stockholm, Sweden	1500	454.5
	Marselles, France	1000	300		Berne, Switzerland	1500	411
YN	Lyon, France	1000	480		Zurich, Switzerland	1500	500
	Berlin, Germany	2000	566	CWOA	Montevideo, Uruguay	1000	428.4
	Breslau, Germany	4000	322.6	2BE	Belfast, Ireland, United Kingdom	1500	306.1
	Frankfort, Germany	4000	428.6	5WA	Cardiff, Wales, United Kingdom	1500	353
	Hamburg, Germany	4000	394.7	5SC	Glasgow, Scotland, United King.	1500	405.4
	Kaiserlautern, Germany	4000	204.1	2LO	London, England, United King.	3000	361.4
	Konigsburg, Germany	4000	329.7	AYRE	Caracas, Venezuela	1000	375
	Langenburg, Germany	8000	468.8				

Stations Logged

CALL	CITY	DIALS		
		1	2	3
K.T.H.S.	Hot Springs Ark	40	42½	88½
N.R.A.C.	Nashville Tenn	3½	9	8½
N.R.N.	Cincinnati (Crosley) Louisville Kentucky	51½	57	53
K.O.A.	Denver Colorado	38	40	35½
N.S.M.	Nashville Tenn	60	65½	60
C.F.R.B.	Toronto Canada	27	29	25
N.K.B.N.	Buffalo N.Y.	10	10	5
K.N.K.K.	Shrewesport La.	35	37½	35
K.F.K.B.	Millford Kansas	19½	20	19
K.D.K.A.	Pittsburg Pa.	24½	28	25
N.H.O.	Des Moines Ia.	25	26	23
N.D.A.P.	St. North Texas	40	42½	40
N.L.A.Z.	Nashville Tenn	0	9	9
N.H.S.	Louisville Times	38	41½	37
K.R.L.D.	Dallas Texas	23	24½	21
C.N.R.W.	Winnipeg Man. Can.	42	45	40
	Shenandoah Ia.	32	34	31
N.Y.Y.	Schenectady N.Y.	41	43½	39
N.M.C.	Memphis Tenn.	42	45	40
N.B.R.C.	Birmingham Ala.	18	19½	19½
N.J.Z.	New York N.Y.	44	47½	43

Monday rate 9.30
Pompton's corner



A CORNER of the "K-TNT" lawn, showing the crowds inspecting and purchasing our unusual line of merchandise at the Booth, under the tower.

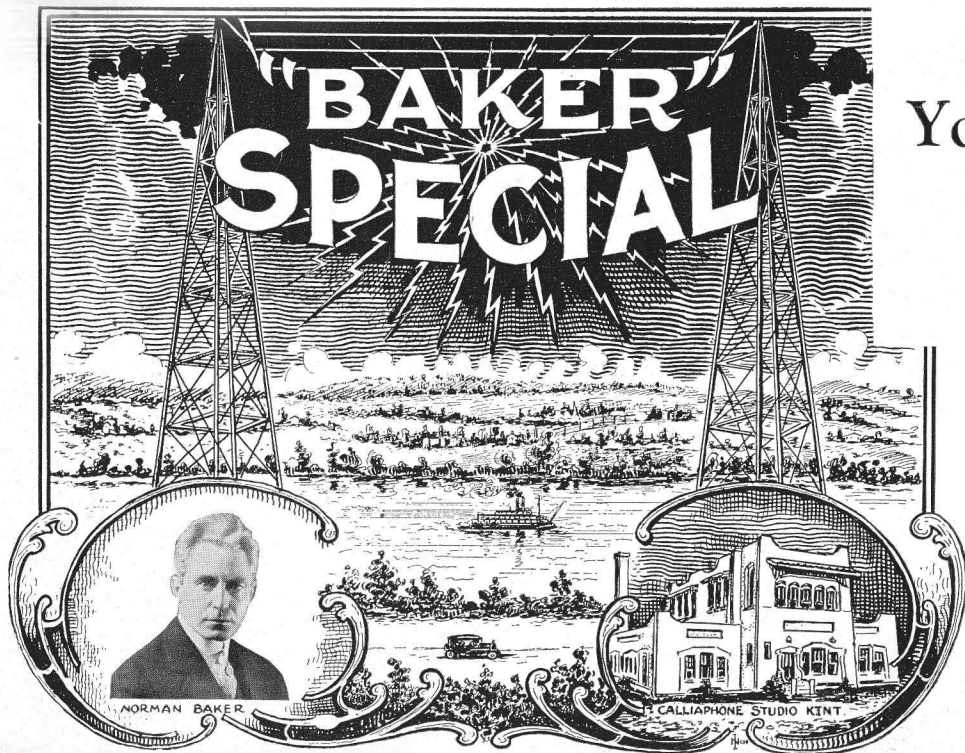
Does Coffee Harm You?

The Listeners who sit up late, and enjoy a good cup of coffee, often wonder why coffee keeps them awake. Others wonder why it gives them Heartburn, while others complain of headaches.

Coffee is a stimulant: good pure Mellow Ripened Coffee will not cause these effects, and can be drunk before retiring with full assurance that you will sleep well.

Too much Coffee now a days that is sold, is mixed with impurities, dope and compounds. Naturally the best Coffee to drink is one that is a pure blend, seasoned by nature. Years ago, when the fine Java Coffee was grown in the West Indies, it was sacked and sold by the Government. It was then loaded in the sailing vessels and sent to our Ports. It required months and months for the journey, and this sacked coffee, thrown in the hold of the vessel and used as ballast, sweated for months on the journey. It reached our shores thoroughly seasoned by nature. It was such delicious coffee that made our Grandmothers speak of the fine flavor of "Old Government Java." Those days are gone. Private interests bought up the plantations, speedy ships bring it to our shores in 10 days, and nature's seasoning is lost.

The closest approach to this delicious, mellow flavor and aroma of Old Government Java, comes to you in BAKER'S MELLOW RIPENED COFFEE. It is cured in steam heated rooms, with "fungus growth" spread over it, which ripens the coffee in such a manner that the excess acids are removed. That's why BAKERS MELLOW RIPENED COFFEE does not keep you awake, cause heartburn or headaches. 3 lbs. only \$1.55; 5 lbs. \$2.45; 10 lbs. \$4.75. TRY IT. It's a delicious drink while you are tuning in late at night



You'll Enjoy This Smoke With Your Radio

Here's a good cigar; you'll like it.
Made of long filler, best domestic
tobacco. Finest binder and
wrapper.

Not too strong, not too mild—
It's just right.

Box of 50, full 5½" size
Only \$2.15

Get a Box and Keep It
On Your Radio

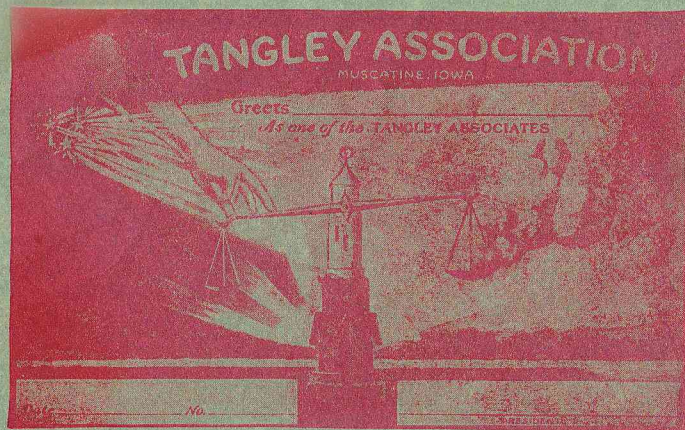
Food For Thought:—

The average person is swayed by the press, and other sources of propaganda—by the “powerful interest” who many times are seeking to devour them.

I refer to the continual press stories against stations that sell merchandise. In the same way that the public utilities have spread their propaganda in the public school text books, in an effort to educate the children of America to their way of thinking that high prices and suppression is OK to the public, the “powerful interests” are spreading their side of the story against “K-TNT”. This is only done to create a hatred against us so that eventually no other stations will exist but those who are connected in a chain to force their advertising in your home whether you like it or not. What is the difference between describing an article in detail like Chain stations do, and refusing to mention the price, or to describe the article in the same way and give the price?

The “interests” combined with the press which take their stand in an effort to influence the local merchants to buy display advertising in their paper, by condemning our station, do their advertising with powerful chain stations that you cannot tune out, and such stations are favored by the Radio Commission. They refuse to give you the price but refer you to local stores. We give you the price, save you the national advertising expense which they attach to their selling price,—save you the dealer’s commission, and oftentimes give you products that no other can supply. For instance, we are the only sellers of PURE GUM RUBBER TIRES, at this writing. Guaranteed 16,500 miles, at prices to you as low as your dealers pay for them. That’s how our station saves you money.

Join This Association And Save 5%



1,000,000 Members is our goal. Each member will receive 5% on all purchases.

This Association is the fulfillment of a lifelong desire of Norman Baker, the owner and operator of "K-TNT". Practically every class of people is organized but the general public.

We, the people, can with the proper organization accomplish wonderful things, and it is the purpose of the TANGLEY

ORGANIZATION to strive for the betterment of the Laborer, Farmer and the public at large.

Mr. Baker has recently purchased a large printing plant, and when all is fully installed it is the intention to publish a national magazine that will become the public mouthpiece of the organization. Thus, with the Radio and printed spokesman, it will place the organization on a solid foundation, with a weapon to fight its strongest enemy.

With the leadership of a fearless and courageous personage, such as Mr. Baker, we see no reason why success is not ahead for us.

Everyone joining will receive a membership card like the above reproduction, numbered serially, and you will receive 5% discount on your purchases. Send for your membership now, it's free. Address, TANGLEY ASSOCIATION, Muscatine, Iowa.

“K-TNT” --- Baker

“It’s not what you earn, that swells your bank account—it’s what you save.”

Send for our general catalogue and get the habit of comparing our prices before buying.

I will save you $33\frac{1}{3}\%$ on your year’s purchases.

Support the Station that Entertains You



PROF. DAFFY'S SCHOOL KIDS AT K-TNT
MUSCATINE - IOWA

- 1-WALTER
- 2-CLARENCE
- 3-PROF. DAFFY
- 4-VINCE
- 5-PAUL
- 6-CLIFF
- 7-BOB
- 8-BESSIE
- 9-ALVA
- 10-Alice
- 11-FONDA
- 12-CHARLOTTE
- 13-CLEO