

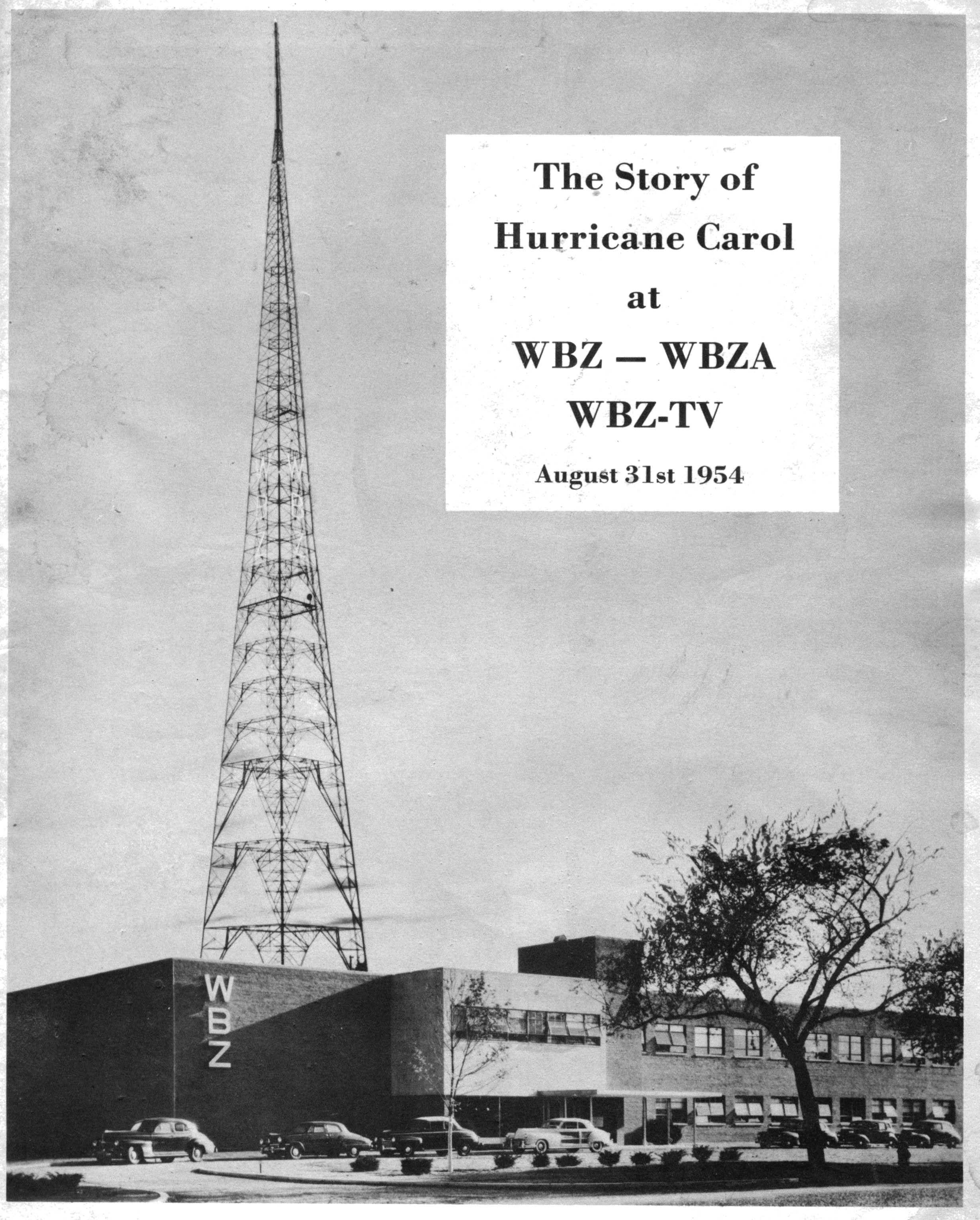
**The Story of
Hurricane Carol**

at

WBZ — WBZA

WBZ-TV

August 31st 1954



A Report from the Associated Press

Sept. 1, 1954

BOSTON, AUG. 31 (AP)-A RADIO STATION MANAGER'S HUNCH PAID OFF TODAY AND AS A RESULT, MANY GIRL EMPLOYEES WERE ALIVE AND UNHARMED THIS AFTERNOON AFTER THE ROOMS WHERE THEY WORKED WERE CRUSHED IN THE CRASH OF A 649 (CQ) FOOT TELEVISION TOWER.

CAMERA MEN AT STATION WBZ-TV HAD MOVED OUTSIDE TO TREAT VIEWERS TO A SHOT OF THE HUGE STEEL STRUCTURE SWAYING IN THE WIND. THE TOWER ALWAYS HAD SWAYED IN HIGH WINDS. BUT THIS WAS A HURRICANE.

GENERAL MANAGER PAUL E. MILLS SUDDENLY REACHED A DECISION AND WARNED 35 GIRL EMPLOYEES TO LEAVE THEIR SECOND-FLOOR OFFICES AS THE NOON HOUR APPROACHED.

FIVE MINUTES LATER, AN ANNOUNCER SCREAMED, "THE TOWER IS GOING!"

AND THE GIANT STEEL STRUCTURE SNAPPED OFF NEARLY 200 FEET FROM THE GROUND AND SLASHED ACROSS THE BROADCASTING BUILDING BELOW, CRUSHING THE OFFICE WHERE THE GIRLS WORKED.

IT DEMOLISHED THE SALES OFFICE, THE OFFICE OF THE STATION MANAGER, HALF OF THE GENERAL OFFICE GIVEN OVER TO RADIO--WRECKING HALF OF THE SECOND FLOOR OF THE BUILDING. THE ROOF WAS CAVED IN. THE WALLS CRACKED. BUT THE STRUCTURE HELD AT THE FIRST FLOOR CEILING LEVEL AND GIRL EMPLOYEES WHO HAD SOUGHT COVER IN A LUNCHROOM BELOW WERE SAFE.

TWO PERSONS RECEIVED HOSPITAL TREATMENT. OTHERS HAD SCRATCHES AND SIMILAR MINOR HURTS.

THE FALLING SECTION OF STEEL ALSO FLATTENED A COUPLE OF CARS, DAMAGED A MOBILE TRUCK AND SMASHED ITSELF IN A MASS OF TWISTED STRUCTURAL STEEL ACROSS THE BIG SOLDIERS FIELD HIGHWAY AND INTO A HORSE RACING TRACK BEYOND.

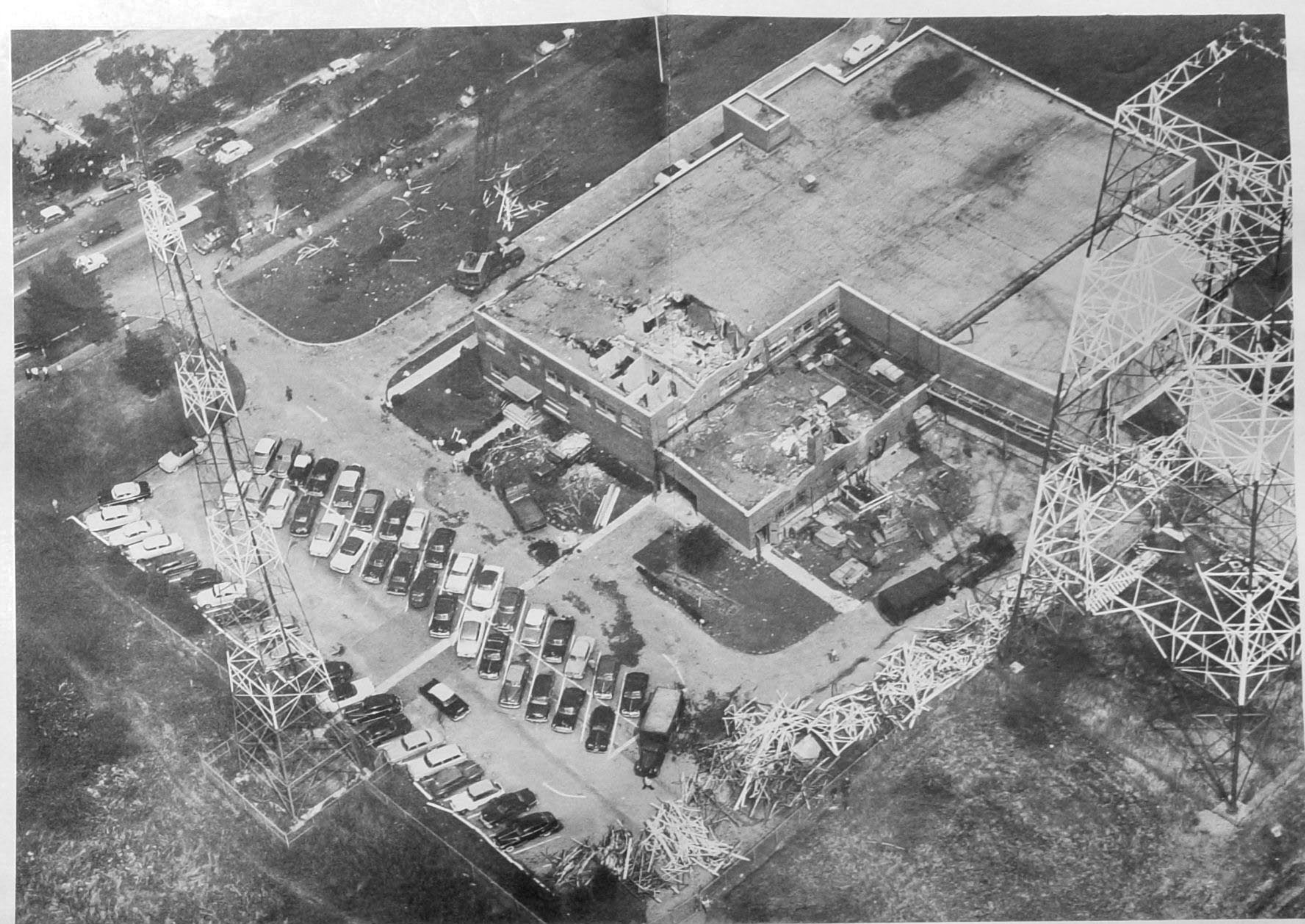
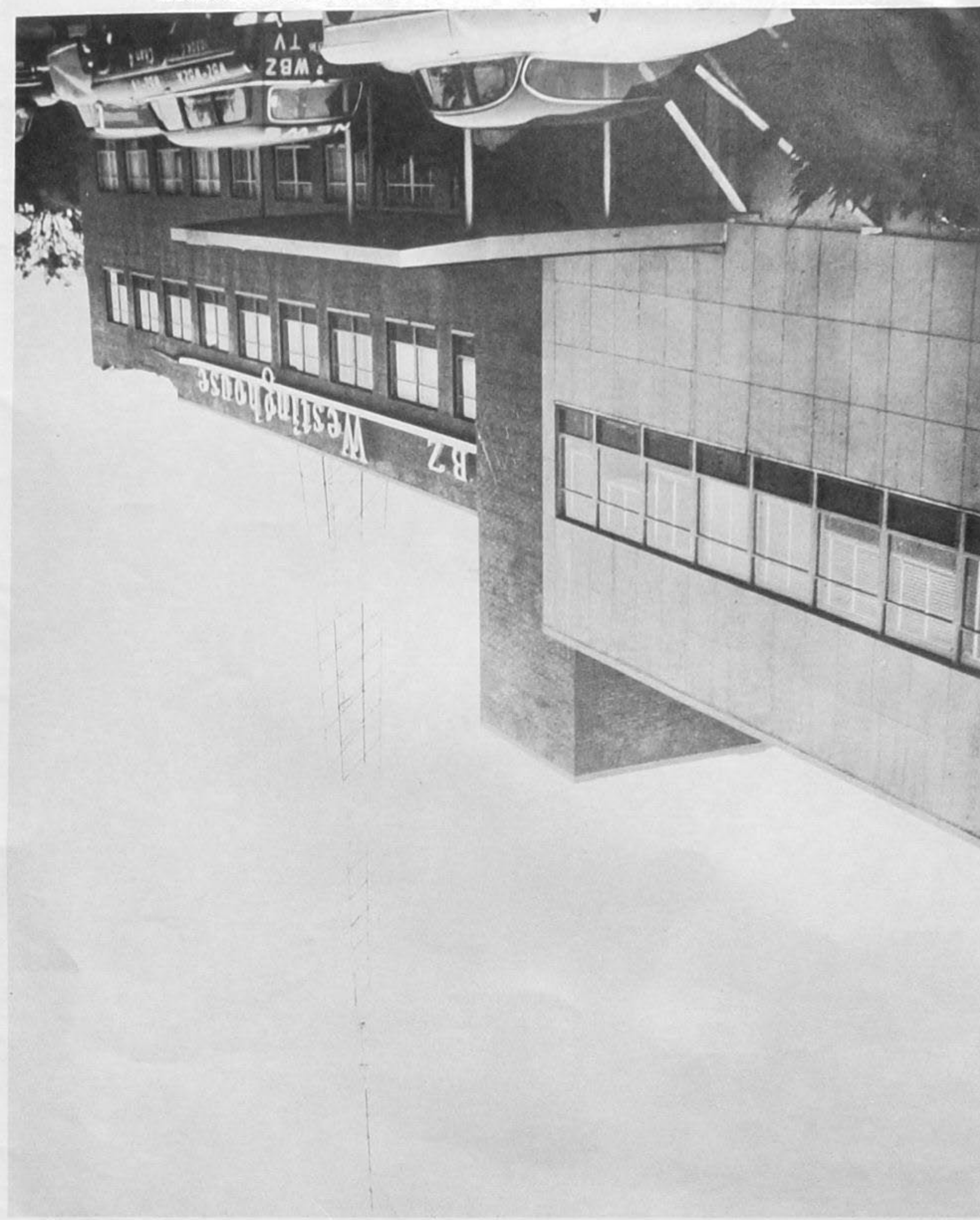
SOME 35 MOTHERS AND CHILDREN ESCAPED HARM AS THEY WAITED IN AN UNDAUNTED PART OF THE BUILDING FOR A TV SHOW TO GO ON.

AFTER THREE MINUTES OF SHOCK AND CONFUSION, RADIO STATION WBZ WAS BACK ON THE AIR. RESTORATION OF TELEVISION BROADCASTS OVER AN EMERGENCY MAST WAS DELAYED UNTIL EVENING.

THE MAIL MUST GO THROUGH



THE 200 FOOT STANDBY ANTENNA IS PRESSED INTO SERVICE



A Report from the Associated Press Sept. 1, 1954

BOSTON, AUG. 31 (AP)—A RADIO STATION MANAGER'S HUNCH PAID OFF TODAY AND AS A RESULT, MANY GIRL EMPLOYEES WERE ALIVE AND UNHARMED THIS AFTERNOON AFTER THE ROOMS WHERE THEY WORKED WERE CRUSHED IN THE CRASH OF A 649 (60) FOOT TELEVISION TOWER.

CAMERA MEN AT STATION WBZ-TV HAD MOVED OUTSIDE TO TREAT VIEWERS TO A SHOT OF THE HUGE STEEL STRUCTURE SWAYING IN THE WIND. THE TOWER ALWAYS HAD SWAYED IN HIGH WINDS. BUT THIS WAS A HURRICANE.

GENERAL MANAGER PAUL E. MILLS SUDDENLY REACHED A DECISION AND WARNED 35 GIRL EMPLOYEES TO LEAVE THEIR SECOND-FLOOR OFFICES AS THE NOON HOUR APPROACHED.

FIVE MINUTES LATER, AN ANNOUNCER SCREAMED, "THE TOWER IS GOING!" AND THE GIANT STEEL STRUCTURE SNAPPED OFF NEARLY 200 FEET FROM THE GROUND AND SLASHED ACROSS THE BROADCASTING BUILDING BELOW, CRUSHING THE OFFICE WHERE THE GIRLS WORKED.

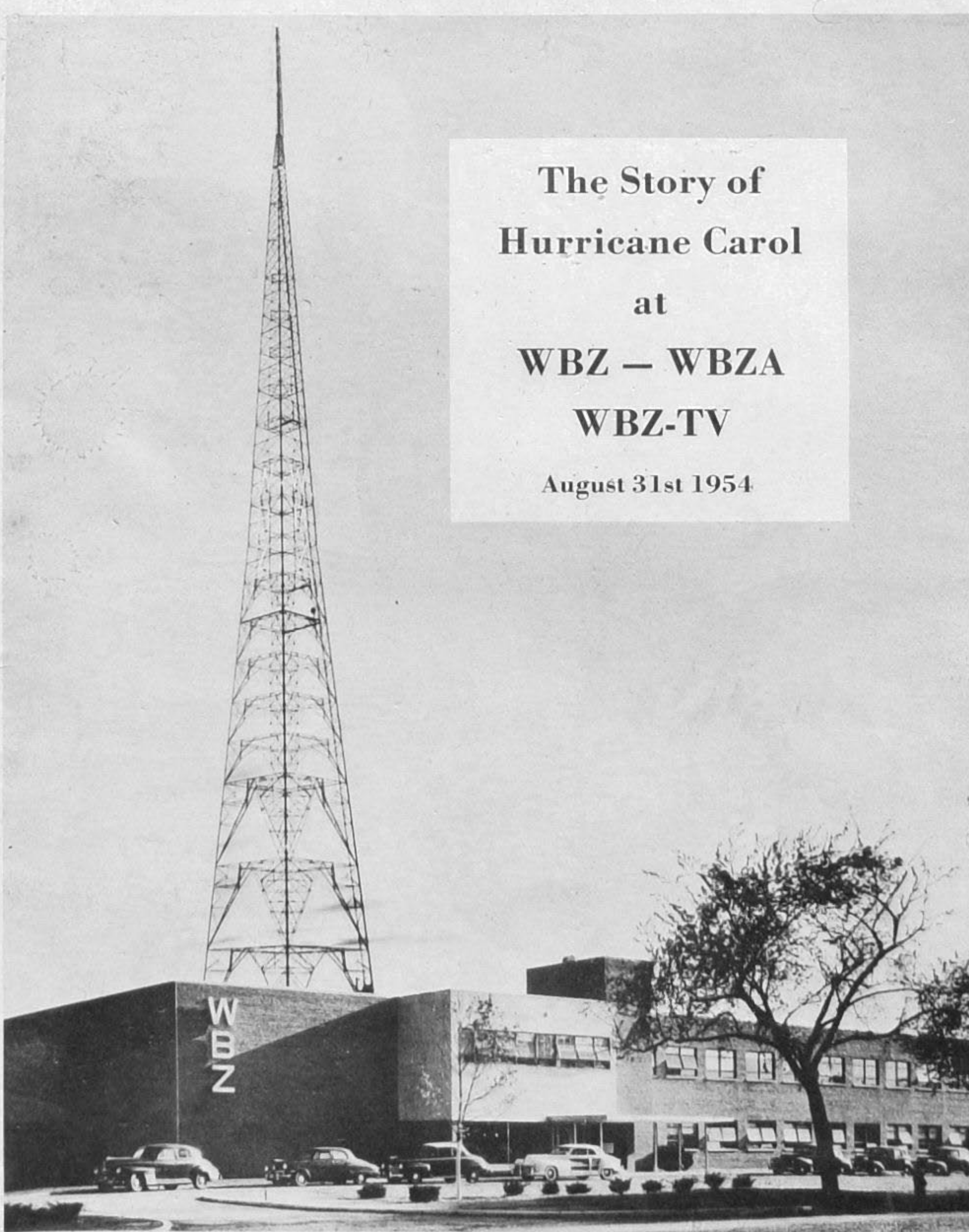
IT DEMOLISHED THE SALES OFFICE, THE OFFICE OF THE STATION MANAGER, HALF OF THE GENERAL OFFICE GIVEN OVER TO RADIO--WRECKING HALF OF THE SECOND FLOOR OF THE BUILDING. THE ROOF WAS CAVED IN. THE WALLS CRACKED. BUT THE STRUCTURE HELD AT THE FIRST FLOOR CEILING LEVEL AND GIRL EMPLOYEES WHO HAD SOUGHT COVER IN A LUNCHROOM BELOW WERE SAFE.

TWO PERSONS RECEIVED HOSPITAL TREATMENT. OTHERS HAD SCRATCHES AND SIMILAR MINOR HURTS.

THE FALLING SECTION OF STEEL ALSO FLATTENED A COUPLE OF CARS, DAMAGED A MOBILE TRUCK AND SMASHED ITSELF IN A MASS OF TWISTED STRUCTURAL STEEL ACROSS THE BIG SOLDIERS FIELD HIGHWAY AND INTO A HORSE RACING TRACK BEYOND.

SOME 35 MOTHERS AND CHILDREN ESCAPED HARM AS THEY WAITED IN AN UNDAMAGED PART OF THE BUILDING FOR A TV SHOW TO GO ON.

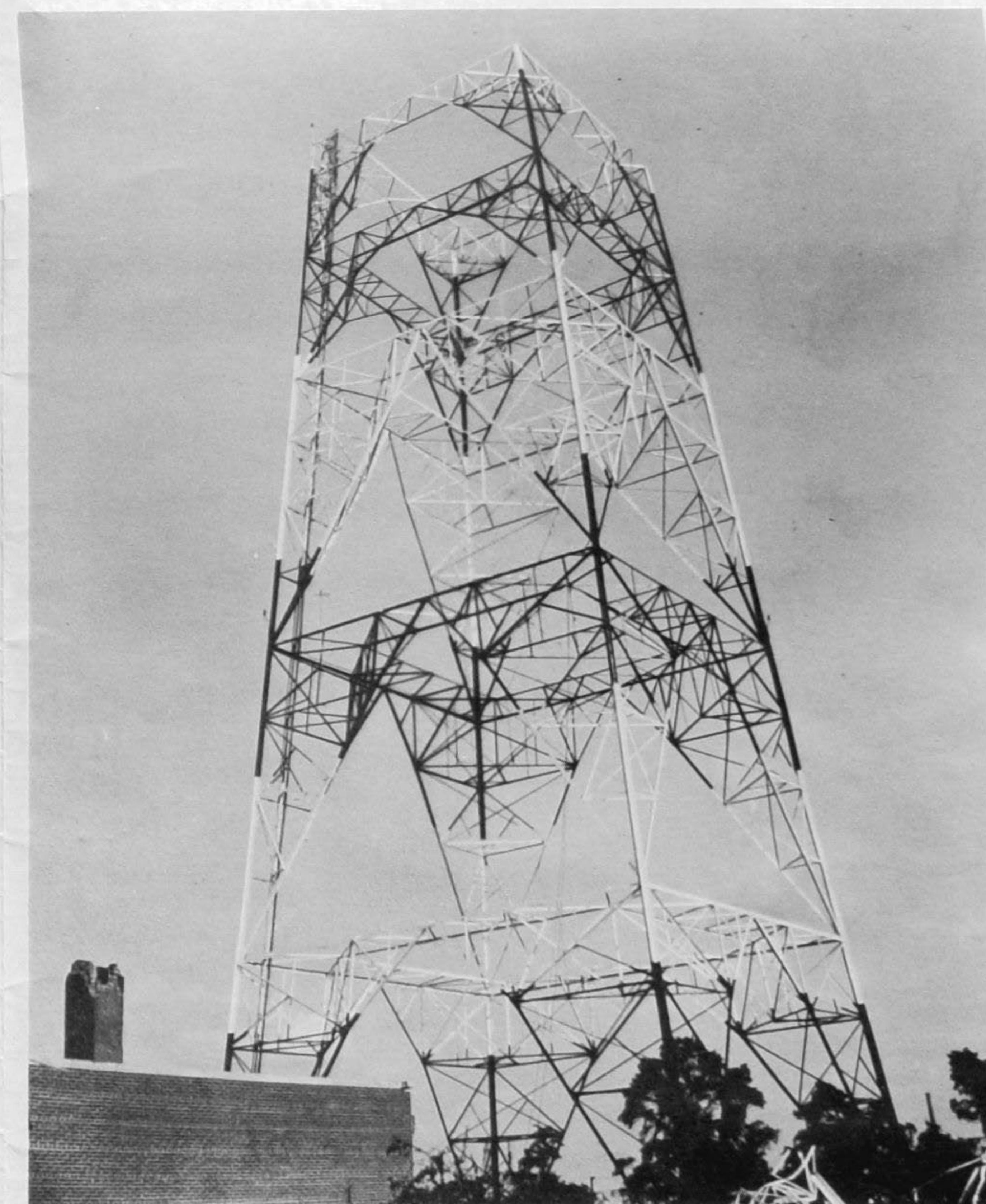
AFTER THREE MINUTES OF SHOCK AND CONFUSION, RADIO STATION WBZ WAS BACK ON THE AIR. RESTORATION OF TELEVISION BROADCASTS OVER AN EMERGENCY MAST WAS DELAYED UNTIL EVENING.



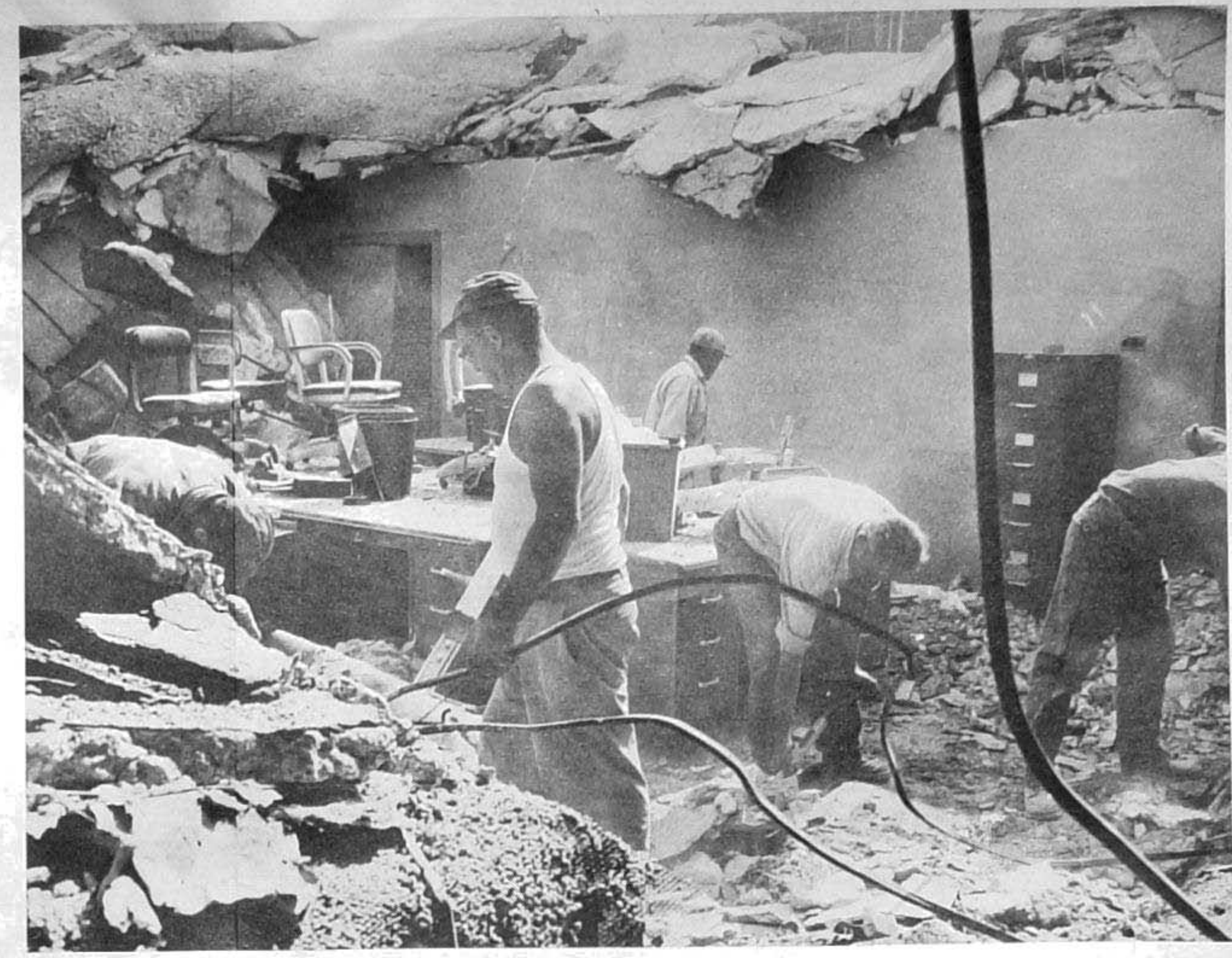
The Story of
Hurricane Carol
at
WBZ — WBZA
WBZ-TV
August 31st 1954



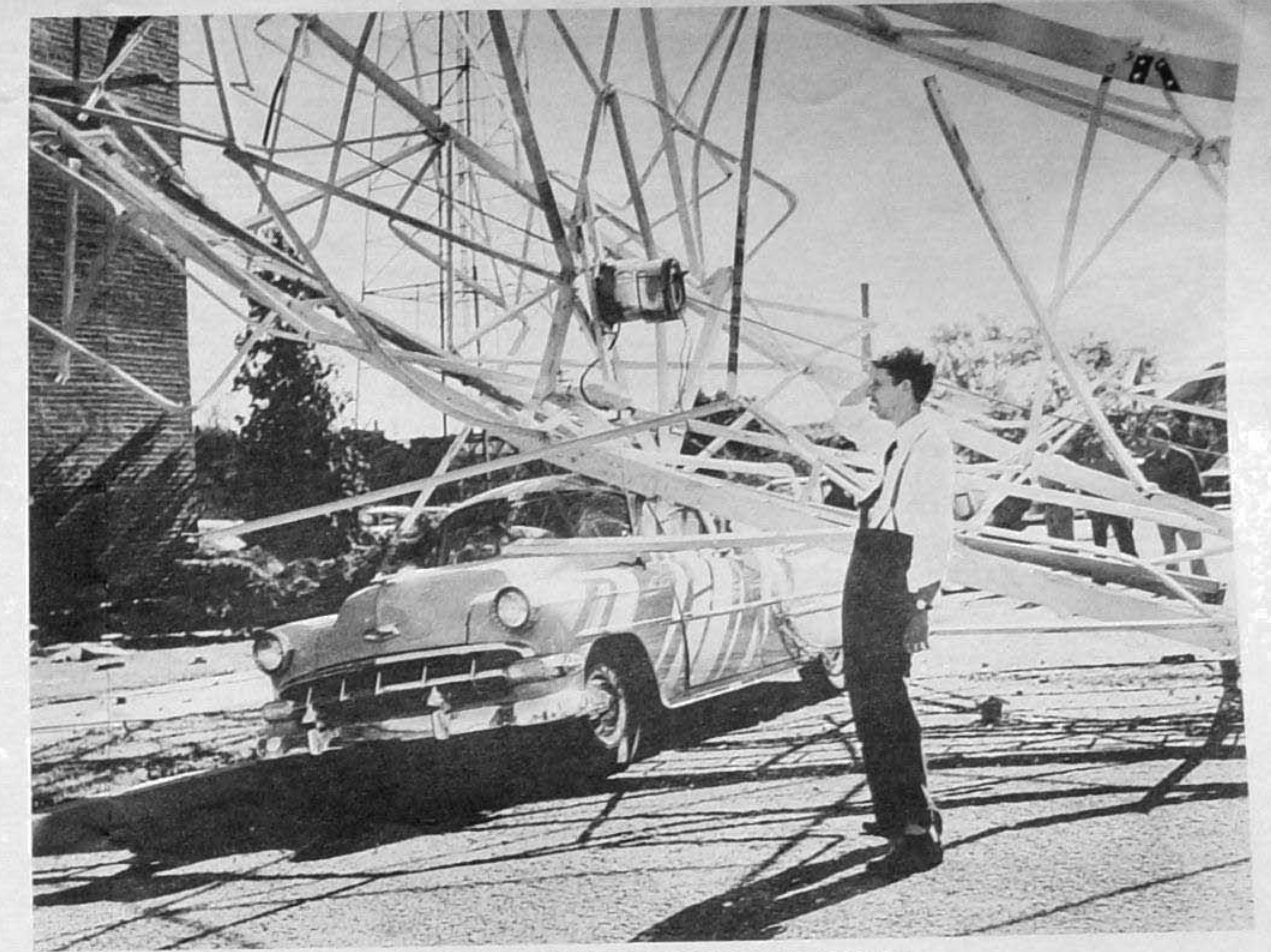
THE OFFICE OF PAUL MILLS WBZ-WBZA STATION MANAGER



ONLY 200 FEET LEFT



PICKING UP THE CEILING



NELSON BRAGG'S CAR HOLDS UP TOWER

C. H. MASSE, WBZ-TV SALES MANAGER, WILL HAVE TO USE THE MTA FOR AWHILE. HERB'S CAR, A BUICK, WAS A TOTAL LOSS, AFTER A DIRECT HIT BY THE TOWER.

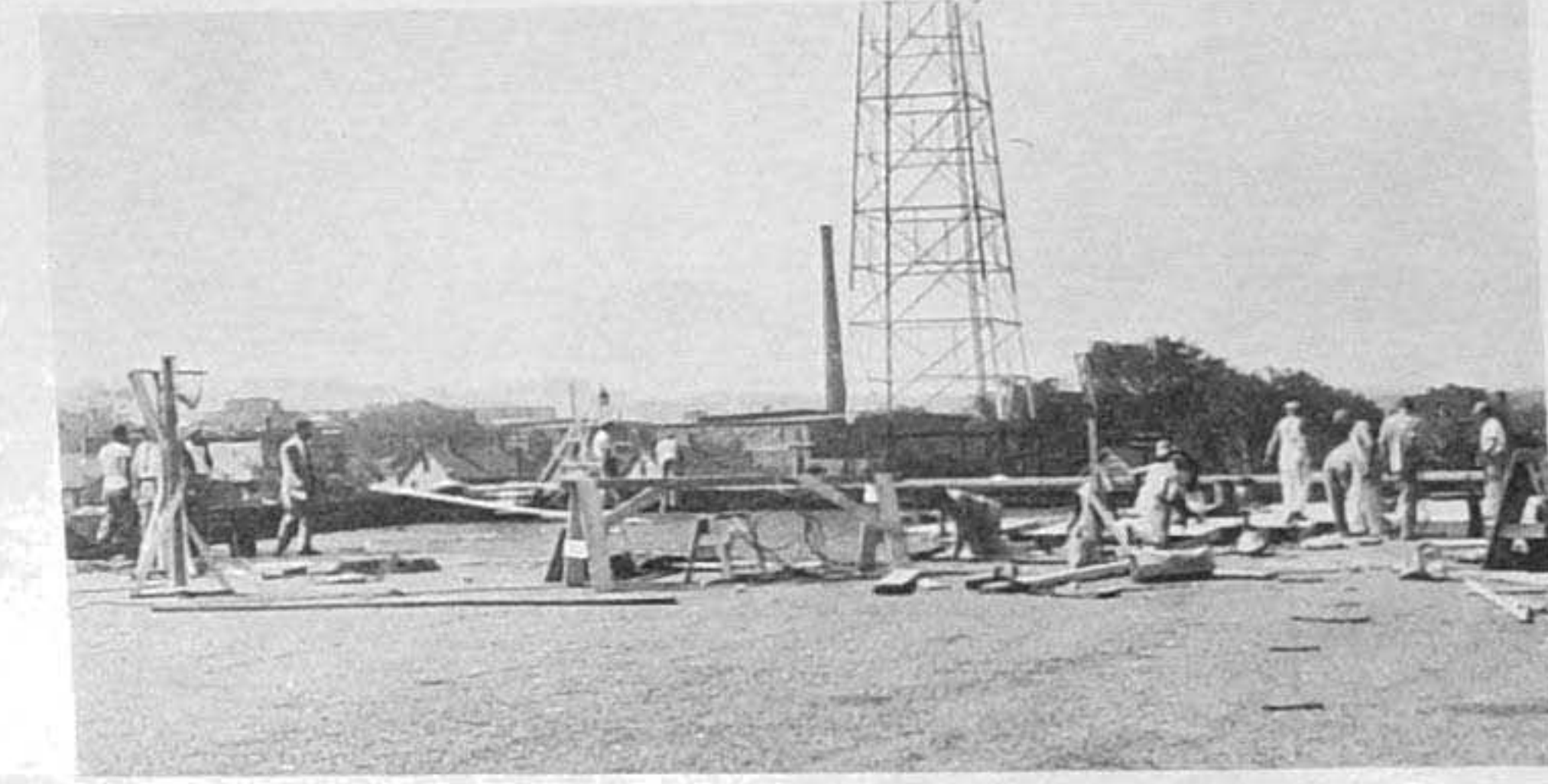
PHOTO CREDIT
 Waid Studio
 Boston Globe
 Boston Record-American
 Bob Berman
 Arber-French Co.



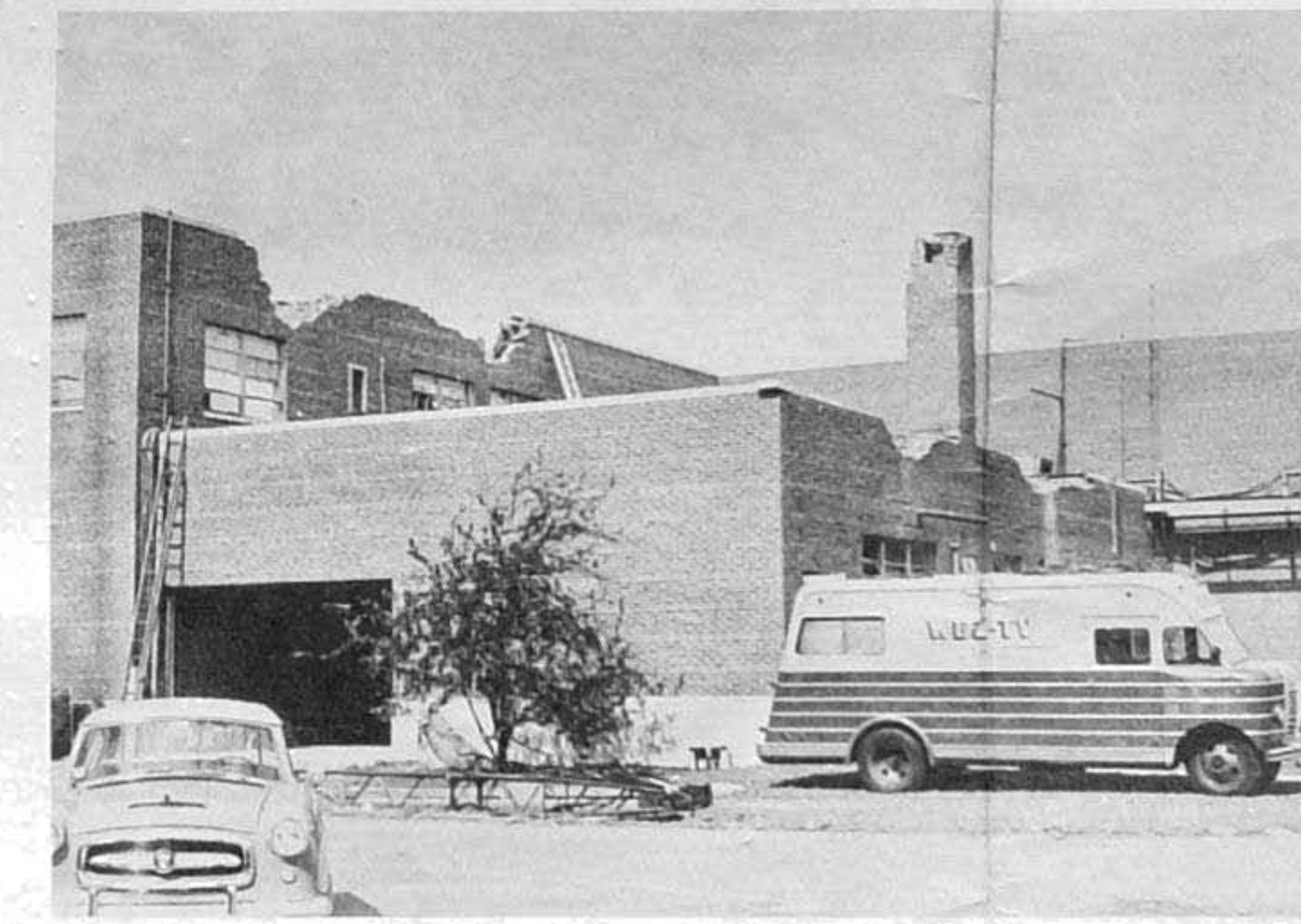
THE LEANING TOWER



BACK VIEW



THE ROOF IN REPAIR



THE MOBILE TRUCK SURVIVED



A BIRD'S EYE VIEW



THE GENERAL OFFICE



SO MUCH SCRAP



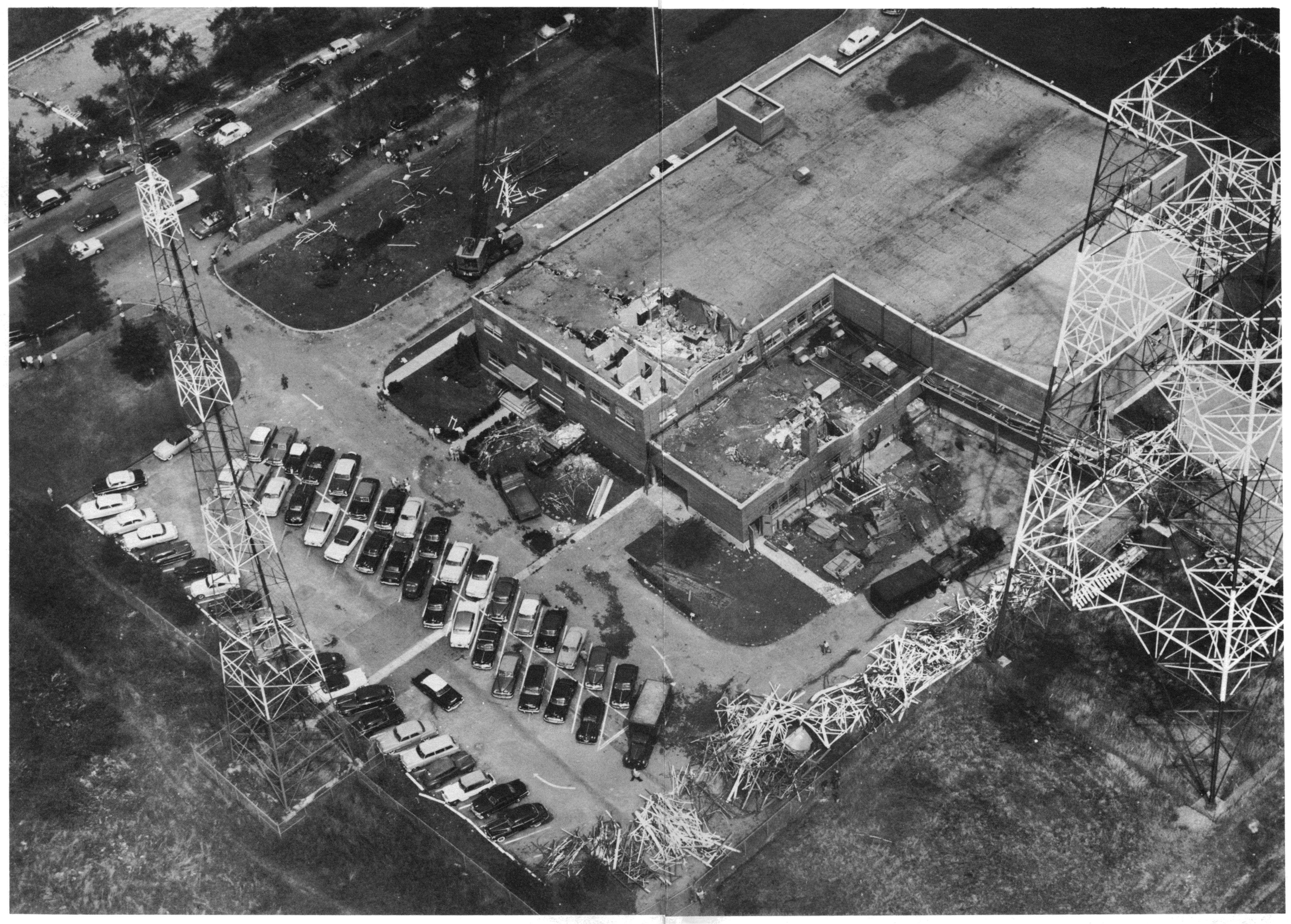
A STEEL SPAGHETTI DINNER

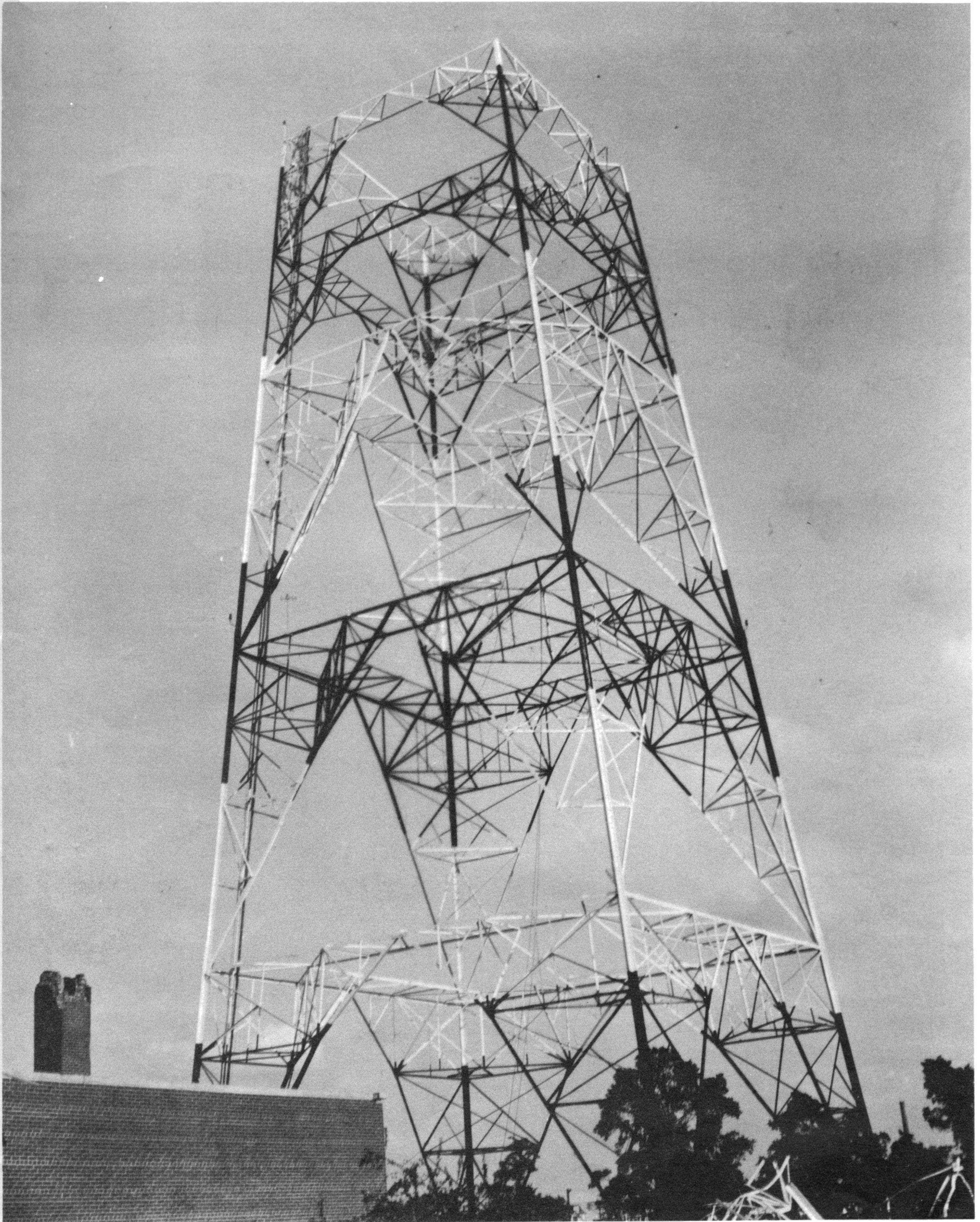


THE 200 FOOT STANDBY ANTENNA IS PRESSED INTO SERVICE



THE MAIL MUST GO THROUGH





ONLY 200 FEET LEFT



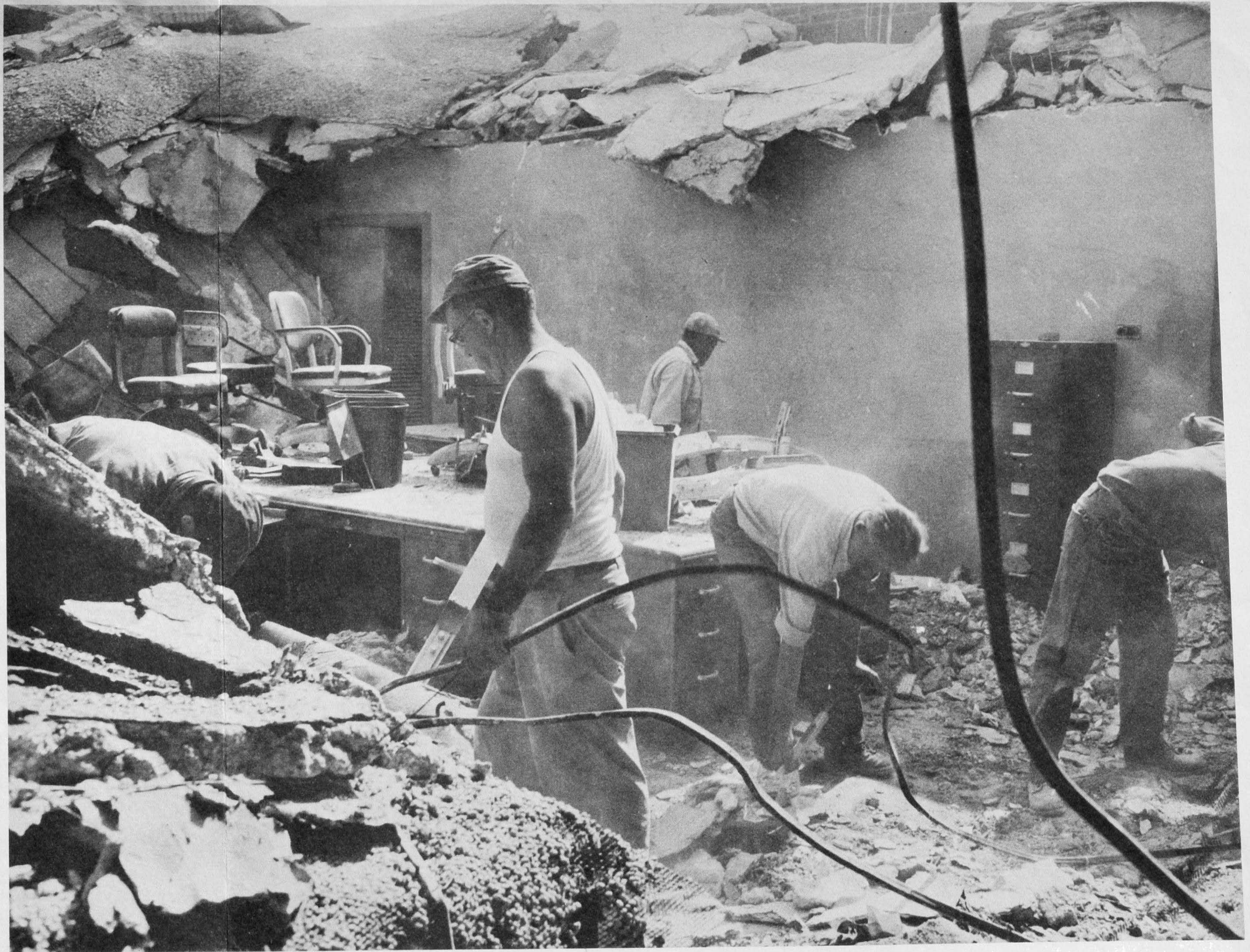
THE OFFICE OF PAUL MILLS WBZ-WBZA STATION MANAGER



THE GENERAL OFFICE



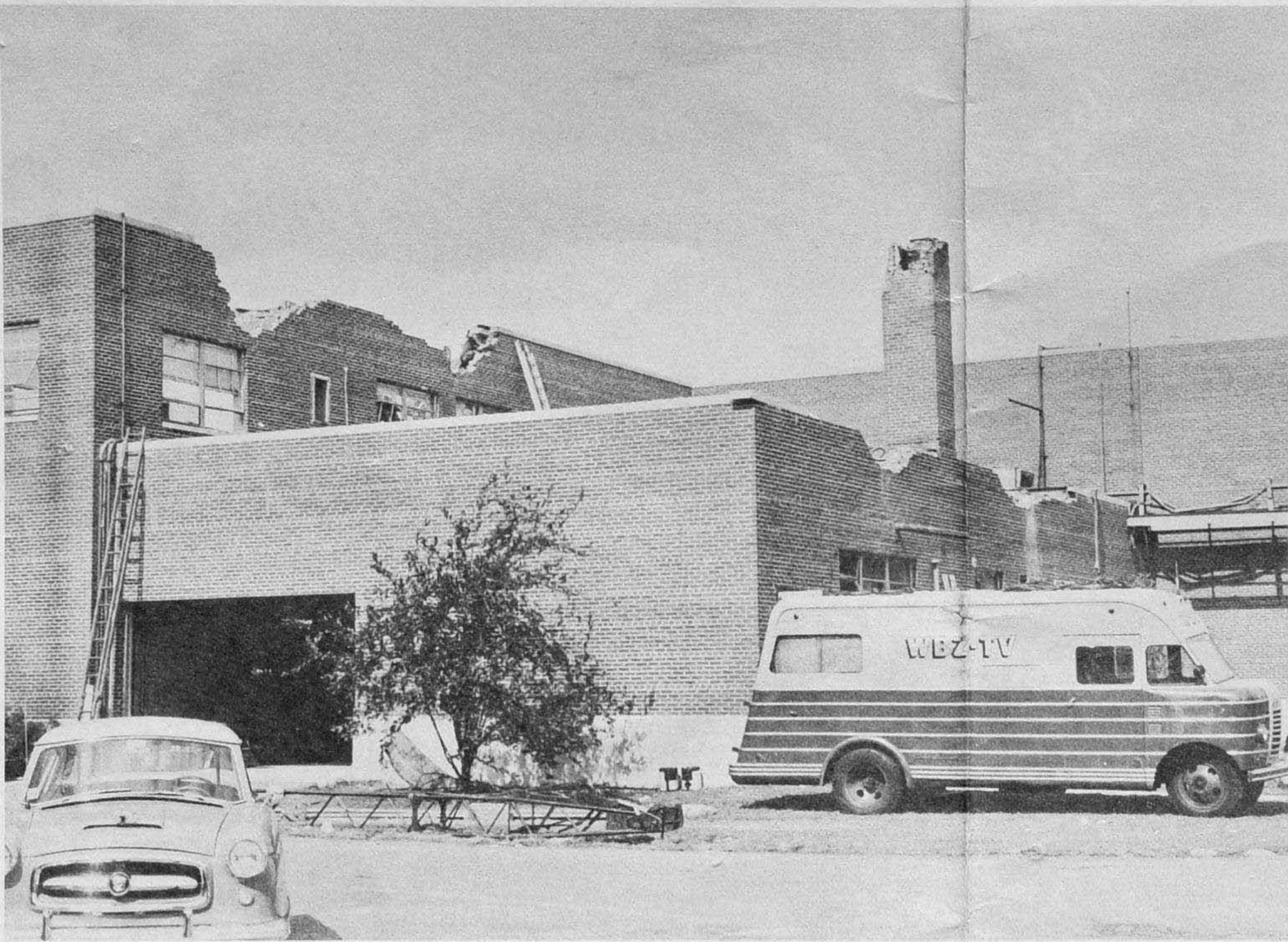
A BIRD'S EYE VIEW



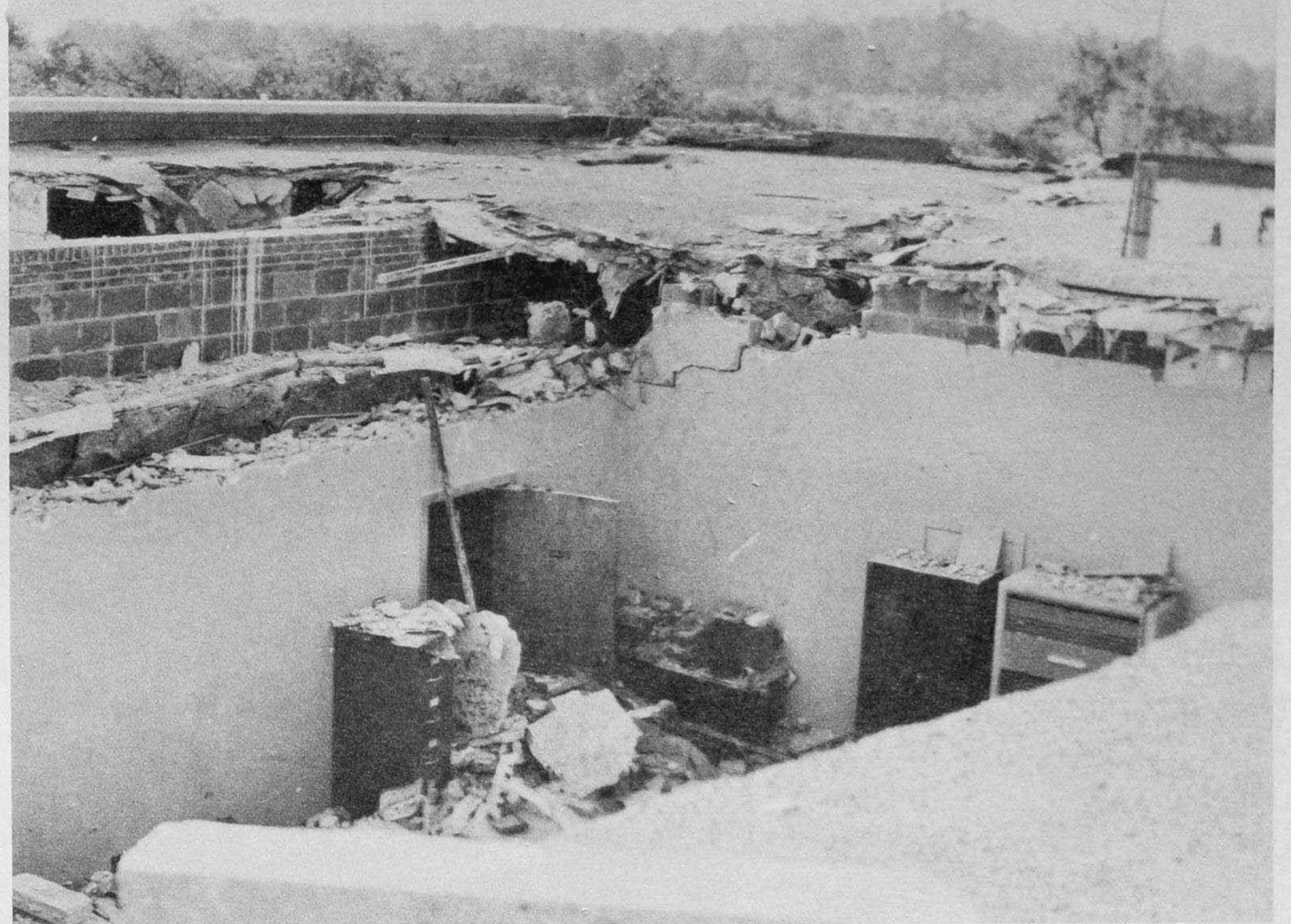
PICKING UP THE CEILING



NELSON BRAGG'S CAR HOLDS UP TOWER



THE MOBILE TRUCK SURVIVED



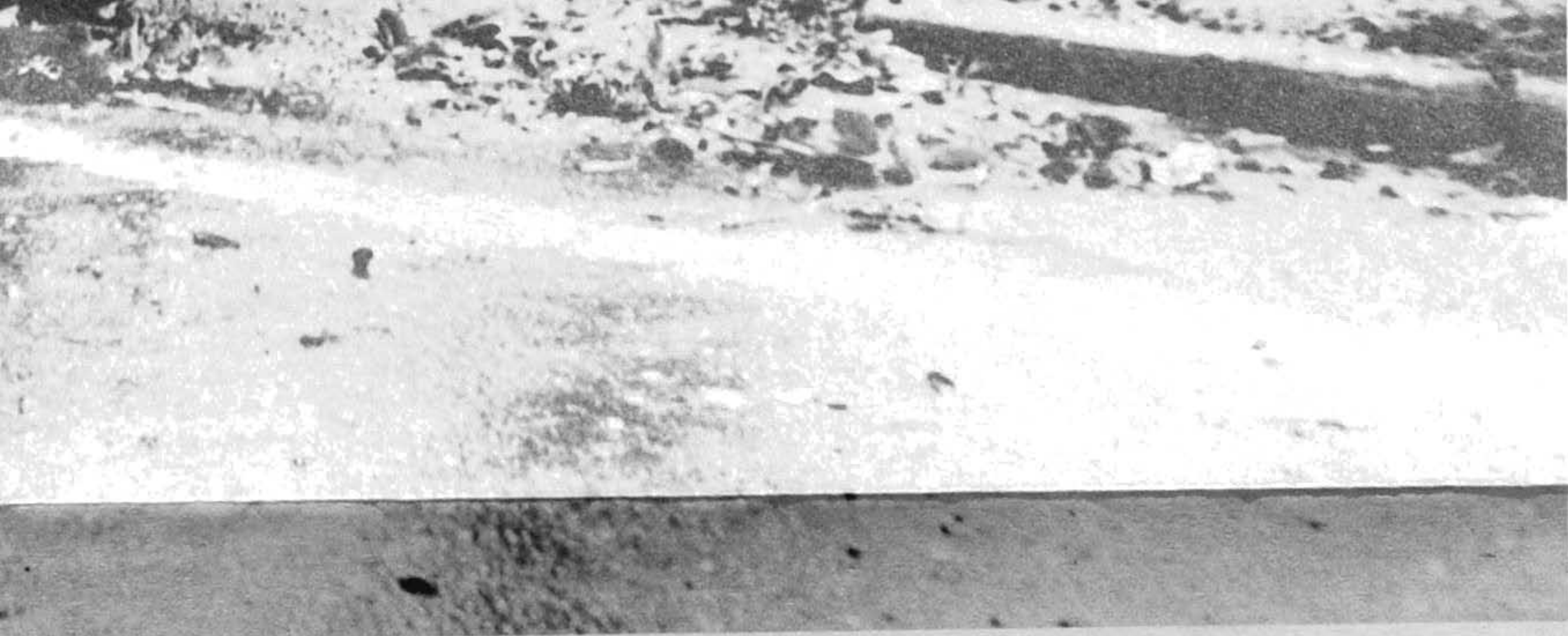
A BIRD'S EYE VIEW



SO MUCH SCRAP



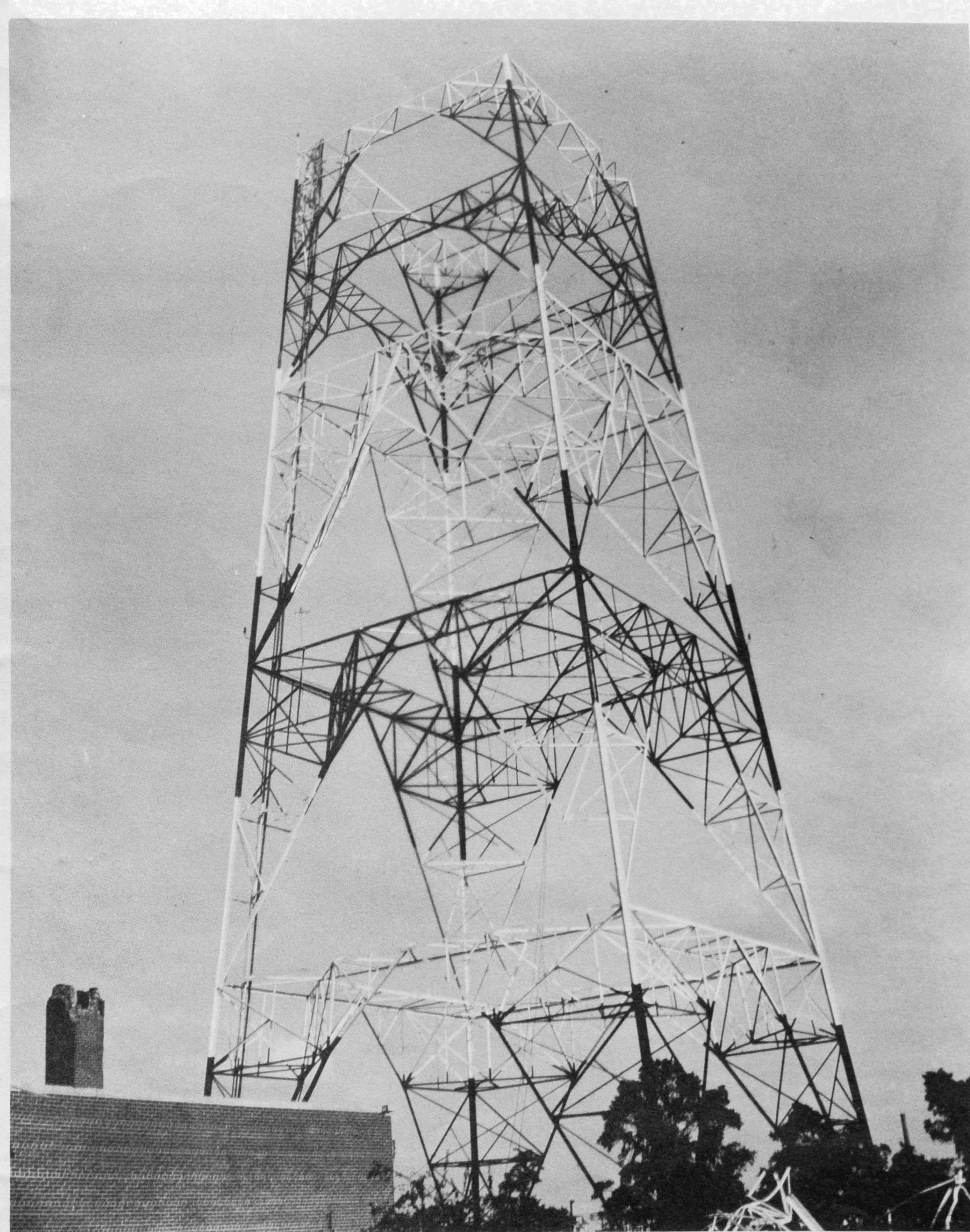
A STEEL SPAGHETTI DINNER



THE LEANING TOWER



THE OFFICE OF PAUL MILLS WBZ-WBZA STATION MANAGER



ONLY 200 FEET LEFT