

Your
program
schedule
and
Souvenir
Album

For
1944

From AMERICA'S
TALLEST RADIO
TOWER

YANKTON
SO. DAKOTA



570 on the dial



Louisiana Lou (center), with Ethel (left) and Mac (right).



Willie Pearson, Cora Deane, Dick Klasi.



Mal Murray



Cap Matly



Harold Arp.



Aunt Marian Matthews.



Wynn Hubler, "Your Neighbor Lady."



Joe Martin



Al Constant



Jack and Audrey.



Warren H

gang help

World Radio History



The Neighbor Lady celebrate her birthday.



Del Richards

5th



"Vox Pop" interviews Les Chinlund of Iowa.



Dave Grant, "Vox Pop" program director, in action.



Warren Hull presents gifts to "Typical Midwest Farmer of 1944."



Parks Johnson interviews John Harrison of South Dakota.



Parks Johnson and Warren Hull prepare to give away money.



"Vox Pop" interviews Mr. and Mrs. John Hartman of Spencer, Nebraska.



Hull before the "Vox Pop" broadcast.



Parks Johnson presents gifts to Edwin Anderson, Typical Farmer from Iowa.



Warren Hull interviews the Hartman's before broadcast.



"Vox Pop" interviews "Typical Midwest Farmer of 1944."



Parks Johnson interviews Les Chinlund before broadcast.



Parks Johnson interviews Otto Baumbachner, Welcome, Minnesota.



More fun before the broadcast of "Vox Pop."



I'll say it's fun.



Harold Arp entertains.



Louisiana Lou, Mac and Ethel, the Pine Cabin Girls.



Still more fun.



"Vox Pop" interviews Edward Wecherly of Anoka, Minnesota.



Happy Jack O'Malley in action.



Dick Klasi takes off.



Warren Hull shows the Sergeant how it's done.



"Vox Pop" ready to announce "Typical Midwest Farmer."



WNAX entertainers ready to go into action.



Willie Pearson and Cora Deane (that's Dick Klasi in the background).



Here's the boy behind the gun—
Cousin Mal Murray.



Jack and Audrey entertain.



WNAX scholarship holders for '43 with the
Neighbor Lady's quilts.



Here is the Chuck Wagon from Winner,
South Dakota.



With Gene Loffler, they fall off.



Your Neighbor Lady and Al Constant present quilts
to the scholarship winners.



Parks Johnson is amazed at this exhibition.



Senator Chan Gurney inducted into
Rosebud Sioux Tribe.



Dick Klasi and the gang really send 'em.



Really lovely! (The quilts, I mean.)



Warren Hurl inducted into Sioux Tribe. In the
background, the "Lone Ranger" and Senator
Gurney.



General Danielson and Senator Chan Gurney all
set for breakfast.

Midwest FARMER DAY Scenes . .

. . Midwest FARMER DAY Scenes



More ceremony.



The "Lone Ranger" and Major General Danielson and their tribal dance.



The "Lone Ranger" is mobbed.



The WAC Band from Fort Des Moines.



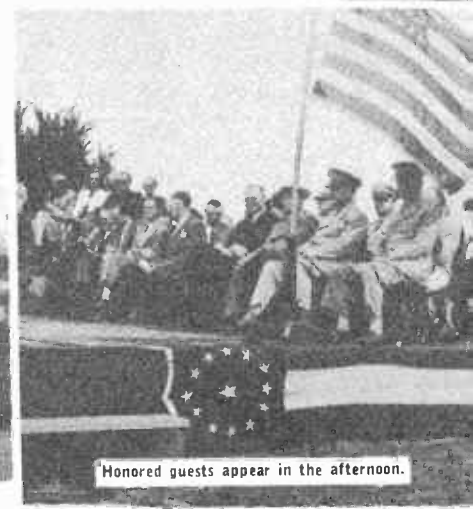
They start unloading the horses from Winner.



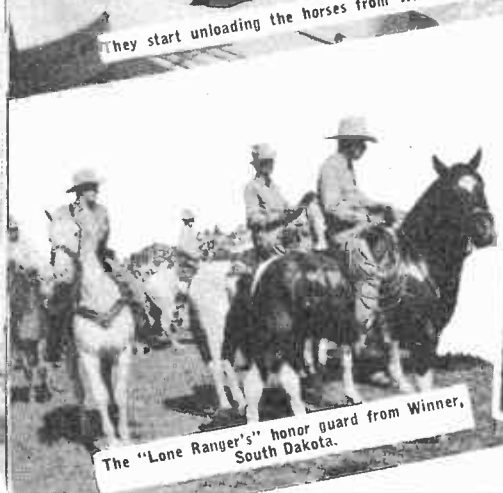
George B. German tells Governor Sharpe how good the coffee is.



The great Sioux Falls Air Base Band.



Honored guests appear in the afternoon.



The "Lone Ranger's" honor guard from Winner, South Dakota.



General Danielson and two Sioux Braves.



Major General Danielson arrives by plane, met by Senator Gurney.



Food display.

Midwest FARMER DAY Scenes . .

. . Midwest FARMER DAY Scenes



Governor M. Q. Sharpe, South Dakota.



Honored guests arrive.



The "Lone Ranger."



Governor Sharpe, South Dakota.



The WAC Band in action.



Gardner Cowles, Jr., owner of WNAX, speaks.



The "Lone Ranger" speaks.



Sioux Falls Air Base Band in action.



Ordnance Display from Fort Omaha.



The "Old Sarge," J. Norman Lodge, AP correspondent.



Gray Gordon and his Band.



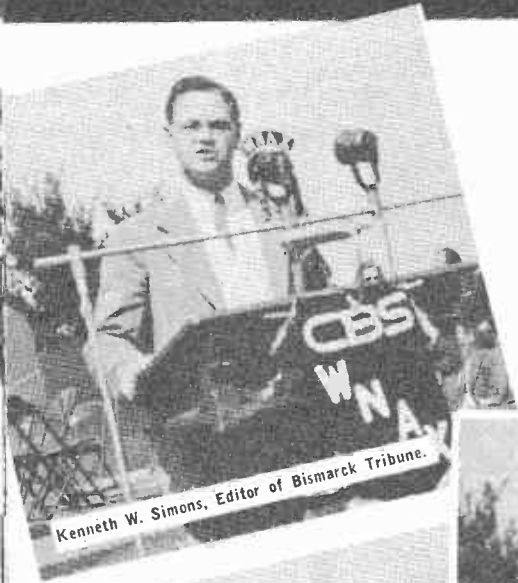
Major General C. H. Danielson.



Captain Ralph W. Ilmanen.

Midwest FARMER DAY Scenes . .

. . Midwest FARMER DAY Scenes



Kenneth W. Simons, Editor of Bismarck Tribune.



Captain Ralph W. Ilmanen.



Major General James A. Ullo, Adjutant General, United States Army.



Rufus Howard, Commissioner of Agriculture, Nebraska.



Ed Thye, Governor of Minnesota.



Major General James A. Ullo in ceremonial headdress.



George B. with Olof Hanson, North Dakota representative.



George B. with Mr. and Mrs. Oscar Olson and daughter, South Dakota representative.



Jack Paige greets Mr. and Mrs. Otto Baumhoefner, "Typical Midwest Farmer of 1943."



George B. with Mr. and Mrs. Robert Shafer, Nebraska representative.



Miss Anderson, featured singer with Gray Gordon.



George B. with the "Typical Midwest Farmer of 1944," Mr. and Mrs. Anton Ettesvold, of Morris, Minnesota.



George B. with Mr. and Mrs. Edwin Anderson and family, Iowa representative.

Yankton Studio ADMINISTRATIVE PERSONNEL

Sioux City PERSONNEL



Cliff Todd, Chief Engineer



Don E. Inman, Vice President and Treasurer



Gene Loffler, Program Director



Ed LaGrave, Account Executive



Tom Lathrop, Account Executive



Jack Paige, Director of Public Relations



Eleanor Zwifelhofer, Accountant and Officer Manager



James H. Allen, Promotion Director



Jim Corbett, News



Arthur J. Smith, Sioux City Studios Manager



Marjorie Gies, Continuity



Rex Hays, Musical Director



Geo. B. German, Farm Director



Whitey Larsen, News Analyst



Russ Van Dyke, 7:15 a.m., 12:35 news, and sports

SUNDAY MORNING

- 7:00 — Back to the Bible
- 7:30 — Salt Lake City Tabernacle
- 8:00 — Gospel Fellowship
- 8:30 — Scandinavian Fellowship Hour
- 9:00 — The World Passes By
- 9:30 — Iowa Speaks
- 9:45 — Ben Adam's Family
- 10:00 — NEWS
- 10:05 — Navy Choir
- 10:30 — FIRST EDITION NEWS
- 10:45 — Christian Crusaders
- 11:30 — Lutheran Hour



AL GOODMAN
"Texaco Star Theatre"



DANNY O'NEIL
"Blue Jacket Choir"



DOUGLAS EDWARDS
"World News Today"



KATE SMITH



ANDRE KOSTELANETZ
"Pause That Refreshes"



EVERETT SLOAN
"Crime Doctor"



PHIL BAKER
"Take It or Leave It"



Fanny Brice and
Hanley Stafford
"Baby Snooks & Daddy"



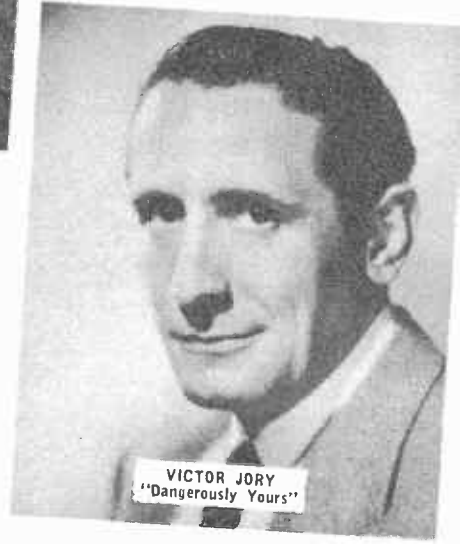
NED CALMER
"News"



JAMES MELTON
"Star Theatre"



WILLIAM L. SHIRER
"News"



VICTOR JORY
"Dangerously Yours"

SUNDAY AFTERNOON

- 12:00 — Radio Bible Class
- 12:30 — Sunday Callers
- 12:45 — SUNDAY HEADLINE NEWS
- 1:00 — Dangerously Yours
- 1:30 — WORLD NEWS TODAY
- 2:00 — New York Philharmonic
- 3:30 — Pause That Refreshes
- 4:00 — Family Hour
- 4:45 — William L. Shirer
- 5:00 — Silver Theatre
- 5:30 — Toasties Time

SUNDAY EVENING

- 6:00 — Kate Smith Hour
- 7:00 — Blondie
- 7:30 — Crime Doctor
- 7:55 — BOB TROUT "JUST NEWS"
- 8:00 — Radio Reader's Digest
- 8:30 — Texaco Star Theatre
- 9:00 — Take It Or Leave It
- 9:30 — Hollywood Theatre
- 10:00 — JIM CORBETT NEWS
- 10:15 — Old Fashioned Revival Hour
- 11:15 — Musical Nite Editor
- 12:00 — NEWS
- 12:05 — Sign Off

MONDAY MORNING

- 6:00 — Good Morning Music on the Farm
- 6:25 — FIRST EDITION NEWS
- 6:30 — Good Morning Music on the Farm
- 6:55 — Home Harmonies
- 7:00 — Early Birds
- 7:10 — Markets
- 7:15 — RUSS VAN DYKE NEWS
- 7:30 — Louisiana Lou Group
- 7:45 — NEWS OF THE WORLD
- 8:00 — Lincoln Hatchery
- 8:15 — Tune Crackers
- 8:30 — Songs by Harold
- 9:00 — Valiant Lady
- 9:15 — Light of the World
- 9:30 — Judy and Jane
- 9:45 — Bachelor's Children
- 10:00 — STANLEY DIXON NEWS
- 10:10 — Opening Markets
- 10:15 — The Goldbergs
- 10:30 — Bright Horizon
- 10:45 — Aunt Jenny
- 11:00 — Kate Smith Speaks
- 11:15 — Big Sister
- 11:30 — Romance of Helen Trent
- 11:45 — Our Gal Sunday

MONDAY AFTERNOON

- 12:00 — Dinner Bell Round-Up
- 12:15 — Markets and Livestock News
- 12:35 — RUSS VAN DYKE NEWS
- 12:50 — Inquiring Farm Reporter
- 1:00 — Joyce Jordan, M.D.
- 1:15 — Two on a Clue
- 1:30 — Young Dr. Malone



ALAN BUNCE
"Young Dr. Malone"



ART VAN HARVEY
"Vic and Sade"



"LOUISIANA LOU"
WNAX



BILL LAWRENCE
"Screen Guild Players"



BOB HAWK
"Thanks to the Yanks"

MONDAY AFTERNOON

(Continued)

- 1:45 — Bernadine Flynn
- 2:00 — Mary Marlin
- 2:15 — Ma Perkins
- 2:30 — Life Can Be Beautiful
- 2:45 — Rosemary
- 3:00 — This Changing World
- 3:15 — Al's Scrapbook
- 3:25 — Your Neighbor Lady
- 4:00 — Afternoon Recess
- 4:45 — Road of Life
- 5:00 — Off the Record
- 5:15 — STANLEY DIXON NEWS
- 5:30 — Jack Armstrong
- 5:45 — WORLD TODAY
- 5:55 — NEWS

MONDAY EVENING

- 6:00 — Novelty Boys
- 6:15 — WHITEY LARSEN NEWS
- 6:30 — Lone Ranger.
- 7:00 — Vox Pop
- 7:30 — Gay Nineties (until Nov. 15)
(Beginning Nov. 22 Frank Sinatra Show at 7:30)
- 7:55 — BILL HENRY NEWS
- 8:00 — Lux Theatre
- 9:00 — Screen Guild Players
- 9:30 — Thanks to the Yanks
- 10:00 — WHITEY LARSEN NEWS
- 10:15 — I Love a Mystery
- 10:30 — Hedda Hopper
- 10:45 — Army Program
- 11:00 — NEWS
- 11:05 — Musical Nite Editor
- 12:00 — NEWS
- 12:05 — Sign Off



JOE HOWARD
"Gay 90's"



CECIL B. DE MILLE
"Lux Radio Theatre"



Parks Johnson and
Warren Hull
"Vox Pop"



BETTY WINKLER
"Joyce Jordan"



BILL HENRY
"News"

TUESDAY MORNING

- 6:00 — Good Morning Music on the Farm
- 6:25 — FIRST EDITION NEWS
- 6:30 — Good Morning Music on the Farm
- 6:55 — Home Harmonies
- 7:00 — Early Birds
- 7:10 — Markets
- 7:15 — RUSS VAN DYKE NEWS
- 7:30 — Louisiana Lou Group
- 7:45 — NEWS OF THE WORLD
- 8:00 — Lincoln Hatchery
- 8:15 — Tune Crackers
- 8:30 — Songs by Harold
- 9:00 — Valiant Lady
- 9:15 — Light of the World
- 9:30 — Judy and Jane
- 9:45 — Bachelor's Children
- 10:00 — STANLEY DIXON NEWS
- 10:10 — Opening Markets
- 10:15 — The Goldbergs
- 10:30 — Bright Horizon
- 10:45 — Aunt Jenny
- 11:00 — Kate Smith Speaks
- 11:15 — Big Sister
- 11:30 — Romance of Helen Trent
- 11:45 — Our Gal Sunday



JANE
"Judy and Jane"

BURNS & ALLEN



BOB GRIFFIN
"Bright Horizon"



JUDY
"Judy and Jane"



LUCILLE WALL
"Portia Faces Life"

TUESDAY AFTERNOON

- 12:00 — Dinner Bell Round-Up
- 12:15 — Markets & Livestock Service
- 12:35 — RUSS VAN DYKE NEWS
- 12:50 — Inquiring Farm Reporter
- 1:00 — Joyce Jordan, M.D.
- 1:15 — Two on a Clue
- 1:30 — Young Dr. Malone

TUESDAY AFTERNOON

(Continued)

- 1:45 — Bernadine Flynn
- 2:00 — Mary Marlin
- 2:15 — Ma Perkins
- 2:30 — Life Can Be Beautiful
- 2:45 — Rosemary
- 3:00 — This Changing World
- 3:15 — Al's Scrapbook
- 3:25 — Your Neighbor Lady
- 4:00 — Afternoon Recess
- 4:45 — Road of Life
- 5:00 — Lynn Murray Orch. & Chorus
- 5:15 — Edwin C. Hill
- 5:30 — Jack Armstrong
- 5:45 — WORLD TODAY
- 5:55 — NEWS

TUESDAY EVENING

- 6:00 — Novelty Boys
- 6:15 — WHITEY LARSEN NEWS
- 6:30 — American Melody Hour
- 7:00 — Big Town
- 7:30 — Romance
- 7:55 — BILL HENRY NEWS
- 8:00 — Burns and Allen
- 8:30 — Victory F.O.B.
- 9:00 — Service to the Front
- 9:30 — Symphonetta
- 10:00 — WHITEY LARSEN NEWS
- 10:15 — I Love a Mystery
- 10:30 — Passing Parade
- 10:45 — CBS Talks
- 11:00 — NEWS
- 11:05 — Musical Nite Editor
- 12:00 — NEWS
- 12:05 — Sign Off



EDWARD PAWLEY
"Big Town"

JOAN BANKS
"Valiant Lady"



EILEEN FARRELL
"American Melody Hour"



DICK KLASI
WNAX



EDWIN C. HILL
"News"

WEDNESDAY MORNING

- 6:00 — Good Morning Music on the Farm
- 6:25 — FIRST EDITION NEWS
- 6:30 — Good Morning Music on the Farm
- 6:55 — Home Harmonies
- 7:00 — Early Birds
- 7:10 — Markets
- 7:15 — RUSS VAN DYKE NEWS
- 7:30 — Louisiana Lou Group
- 7:45 — NEWS OF THE WORLD
- 8:00 — Lincoln Hatchery
- 8:15 — Tune Crackers
- 8:30 — Songs by Harold
- 9:00 — Valiant Lady
- 9:15 — Light of the World
- 9:30 — Judy and Jane
- 9:45 — Bachelor's Children
- 10:00 — STANLEY DIXON NEWS
- 10:10 — Markets
- 10:15 — The Goldbergs
- 10:30 — Bright Horizon
- 10:45 — Aunt Jenny
- 11:00 — Kate Smith Speaks
- 11:15 — Big Sister
- 11:30 — Romance of Helen Trent
- 11:45 — Our Gal Sunday

WEDNESDAY AFTERNOON

- 12:00 — Dinner Bell Round-Up
- 12:15 — Markets & Livestock News
- 12:35 — RUSS VAN DYKE NEWS
- 12:50 — Inquiring Farm Reporter
- 1:00 — Joyce Jordan, M.D.
- 1:15 — Two on a Clue
- 1:30 — Young Dr. Malone



JEAN YENNYSON
"Great Moments in Music"



"LONE RANGER"



CORA DEAN
"NAX"



ALLEN JONES



JEAN HERSHOLT
"Dr. Christian"



DOROTHY LOWELL
"Our Gal Sunday"



JACK CARSON
"Jack Carson Show"



MARJORIE ANDERSON
"Big Sister"



FRANK SINATRA
"Frank Sinatra Show"



ALICE REINHART
"Life Can Be Beautiful"

WEDNESDAY AFTERNOON

(Continued)

- 1:45 — Bernadine Flynn
- 2:00 — Mary Marlin
- 2:15 — Ma Perkins
- 2:30 — Life Can Be Beautiful
- 2:45 — Rosemary
- 3:00 — This Changing World
- 3:15 — Al's Scrapbook
- 3:25 — Your Neighbor Lady
- 4:00 — Afternoon Recess
- 4:45 — Road of Life
- 5:00 — Songs by Harold
- 5:15 — STANLEY DIXON NEWS
- 5:30 — Jack Armstrong
- 5:45 — World Today
- 5:55 — NEWS

WEDNESDAY EVENING

- 6:00 — Novelty Boys
- 6:15 — WHITEY LARSEN NEWS
- 6:30 — Lone Ranger
- 7:00 — Jack Carson
- 7:30 — Dr. Christian
- 7:55 — BILL HENRY NEWS
- 8:00 — Frank Sinatra
- 8:30 — Allen Jones
- 9:00 — Great Moments in Music
- 9:30 — Electric Hour
- 10:00 — WHITEY LARSEN NEWS
- 10:15 — I Love a Mystery
- 10:30 — Passing Parade
- 10:45 — CBS Sustaining
- 11:00 — NEWS
- 11:05 — Musical Nite Editor
- 12:00 — NEWS
- 12:05 — Sign Off

THURSDAY MORNING

- 6:00 — Good Morning Music on the Farm
- 6:25 — FIRST EDITION NEWS
- 6:30 — Good Morning Music on the Farm
- 7:00 — Early Birds
- 7:10 — Markets
- 7:15 — RUSS VAN DYKE NEWS
- 7:30 — Louisiana Lou Group
- 7:45 — News of the World
- 8:00 — Lincoln Hatchery
- 8:15 — Tune Crackers
- 8:30 — Songs by Harold
- 9:00 — Valiant Lady
- 9:15 — Light of the World
- 9:30 — Judy and Jane
- 9:45 — Bachelor's Children
- 10:00 — STANLEY DIXON NEWS
- 10:10 — Markets
- 10:15 — The Goldbergs
- 10:30 — Bright Horizon
- 10:45 — Aunt Jenny
- 11:00 — Kate Smith Speaks
- 11:15 — Big Sister
- 11:30 — Romance of Helen Trent
- 11:45 — Our Gal Sunday



PATRICIA DUNLAP
"Bachelor's Children"



"PINE CABIN GIRLS"
WNAX



JANET WALDO
"Corliss Archer"



JOHN NESBITT
"Passing Parade"

THURSDAY AFTERNOON

- 12:00 — Dinner Bell Round-Up
- 12:15 — Markets & Livestock Service
- 12:35 — RUSS VAN DYKE NEWS
- 12:50 — Inquiring Farm Reporter
- 1:00 — Joyce Jordan, M.D.
- 1:15 — Two on a Clue
- 1:30 — Young Dr. Malone
- 1:45 — Bernadine Flynn

THURSDAY AFTERNOON

(Continued)

- 2:00 — Mary Marlin
- 2:15 — Ma Perkins
- 2:30 — Life Can Be Beautiful
- 2:45 — Rosemary
- 3:00 — This Changing World
- 3:15 — Al's Scrapbook
- 3:25 — Your Neighbor Lady
- 4:00 — Afternoon Recess
- 4:45 — Road of Life
- 5:00 — Lynn Murray Orch. & Chorus
- 5:15 — STANLEY DIXON NEWS
- 5:30 — Jack Armstrong
- 5:45 — WORLD TODAY
- 5:55 — NEWS



MAJOR BOWES
"Major Bowes Hour"



BARBARA FULLER
"Light of the World"



LAWSON ZERBE
"This Changing World"



OLYN LANDICK
"Death Valley Sheriff"



LARRY DOUGLAS
"Here's to Romance"

THURSDAY EVENING

- 6:00 — Novelty Boys
- 6:15 — WHITEY LARSEN NEWS
- 6:30 — Thursday Night Get Together
- 7:15 — The Story Behind Your Name
- 7:30 — Death Valley Days
- 7:55 — BILL HENRY NEWS
- 8:00 — Major Bowes Hour
- 8:30 — Corliss Archer
- 9:00 — The First Line
- 9:30 — Larry Douglas and Ray Block's Orchestra and Guest Stars
- 10:00 — WHITEY LARSEN NEWS
- 10:15 — I Love a Mystery
- 10:30 — Passing Parade
- 10:45 — CBS Sustaining
- 11:00 — NEWS
- 11:05 — Musical Nite Editor
- 12:00 — NEWS
- 12:05 — Sign Off

FRIDAY MORNING

- 6:00 — Good Morning Music on the Farm
- 6:25 — FIRST EDITION NEWS
- 6:30 — Good Morning Music on the Farm
- 6:55 — Home Harmonies
- 7:00 — Early Birds
- 7:10 — Markets
- 7:15 — RUSS VAN DYKE NEWS
- 7:30 — Louisiana Lou Group
- 7:45 — NEWS OF THE WORLD
- 8:00 — Lincoln Hatchery
- 8:15 — Tune Crackers
- 8:30 — Songs by Harold
- 9:00 — Valiant Lady
- 9:15 — Light of the World
- 9:30 — Judy and Jane
- 9:45 — Bachelor's Children
- 10:00 — STANLEY DIXON NEWS
- 10:10 — Markets
- 10:15 — The Goldbergs
- 10:30 — Bright Horizon
- 10:45 — Aunt Jenny
- 11:00 — Kate Smith Speaks
- 11:15 — Big Sister
- 11:30 — Romance of Helen Trent
- 11:45 — Our Gal Sunday

FRIDAY AFTERNOON

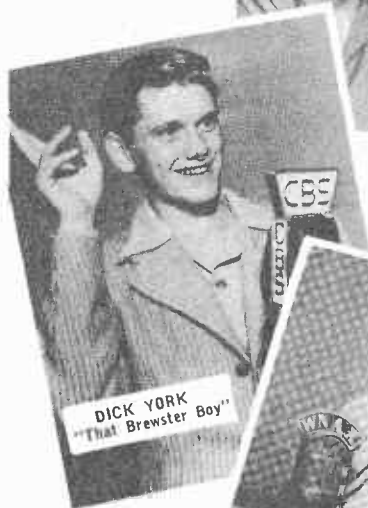
- 12:00 — Dinner Bell Round-Up
- 12:15 — Markets & Livestock Service
- 12:35 — RUSS VAN DYKE NEWS
- 12:50 — Inquiring Farm Reporter
- 1:00 — Joyce Jordan, M.D.
- 1:15 — Two on a Clue
- 1:30 — Young Dr. Malone



MEMBERS OF CAST
"I Love a Mystery"



MEMBERS OF CAST
"The Aldrich Family"



DICK YORK
"That Brewster Boy"



"Happy" Jack O'Malley
WNAX



GARRY MOORE and
JIMMY DURANTE
"Moore-Durante Show"

CLAUDIA MORGAN
and
DAVID GOTHARD
"Adventures of the
Thin Man"



"NEIGHBOR LADY'S"
3rd Anniversary
WNAX



JULIE STEVENS
"The Romance of
Helen Trent"



BERT LYTELL
"Stage Door Canteen"

FRIDAY AFTERNOON

(Continued)

- 1:45 — Bernadine Flynn
- 2:00 — Mary Marlin
- 2:15 — Ma Perkins
- 2:30 — Life Can Be Beautiful
- 2:45 — Rosemary
- 3:00 — This Changing World
- 3:15 — Al's Scrapbook
- 3:25 — Your Neighbor Lady
- 4:00 — Afternoon Recess
- 4:45 — Road of Life
- 5:00 — Songs by Harold
- 5:15 — STANLEY DIXON NEWS
- 5:30 — Jack Armstrong
- 5:45 — World Today
- 5:55 — NEWS

FRIDAY EVENING

- 6:00 — Novelty Boys
- 6:15 — WHITEY LARSEN NEWS
- 6:30 — Lone Ranger
- 7:00 — Aldrich Family
- 7:30 — Thin Man
- 7:55 — BILL HENRY NEWS
- 8:00 — It Pays to Be Ignorant
- 8:30 — That Brewster Boy
- 9:00 — Moore and Durante
- 9:30 — Stage Door Canteen
- 10:00 — WHITEY LARSEN NEWS
- 10:15 — I Love a Mystery
- 10:30 — Mildred Bailey Show
- 11:00 — NEWS
- 11:05 — Musical Nite Editor
- 12:00 — NEWS
- 12:05 — Sign Off

SATURDAY MORNING

- 6:00 — Good Morning Music on the Farm
- 6:25 — FIRST EDITION NEWS
- 6:30 — Good Morning Music on the Farm
- 7:00 — Early Birds
- 7:15 — RUSS VAN DYKE NEWS
- 7:30 — Louisiana Lou Group
- 7:45 — NEWS OF THE WORLD
- 8:00 — Songs by Harold
- 8:15 — Geo. H. Lee Novelty Boys
- 8:30 — Adventures of Omar
- 9:00 — Glandeliers
- 9:15 — Music Time
- 9:30 — Your Neighbor Lady
- 10:00 — NEWS
- 10:05 — Let's Pretend
- 10:30 — Fashions in Rations
- 11:00 — Armstrong Theatre of Today
- 11:30 — Of Interest to Women



SATURDAY AFTERNOON

- 12:00 — Dinner Bell Round-Up
- 12:15 — Geo. B.'s Farm Topics
- 12:30 — Markets
- 12:35 — RUSS VAN DYKE NEWS
- 12:50 — Inquiring Farm Reporter
- 1:00 — Happy Jack's Gang
- 1:45 — Football (through Nov. 25)

SATURDAY AFTERNOON (Continued)

- 2:00 — Saturday Matinee (starting Dec. 2)
- 5:00 — Lynn Murray Orch. & Chorus
- 5:15 — STANLEY DIXON NEWS
- 5:30 — 4-H Round-Up
- 5:45 — World Today
- 5:55 — NEWS

SATURDAY EVENING

- 6:00 — Novelty Boys
- 6:15 — WHITEY LARSEN NEWS
- 6:30 — America in the Air
- 7:00 — Columbia Country Journal
- 7:30 — Inner Sanctum
- 7:55 — BOB TROUT "JUST NEWS"
- 8:00 — Your Hit Parade
- 8:45 — Take Off Time
- 9:15 — Correction Please
- 9:45 — CBS Talk
- 10:00 — WHITEY LARSEN NEWS
- 10:15 — Parade of Features
- 10:30 — CBS Sustaining
- 10:45 — CBS Sustaining
- 11:00 — NEWS
- 11:05 — Musical Nite Editor
- 12:00 — NEWS
- 12:05 — Sign Off



WNAX
IS HAPPY TO
SEND



P. L. & R. No. 562
POSTAGE PAID
PERMIT No. 14
YANKTON, S. DAK.